



1943

Aquila 1943 (Tri-State High School Yearbook)

Associated Student Body of Tri-State High School

Follow this and additional works at: <https://scholarlycommons.pacific.edu/cook-nisei>

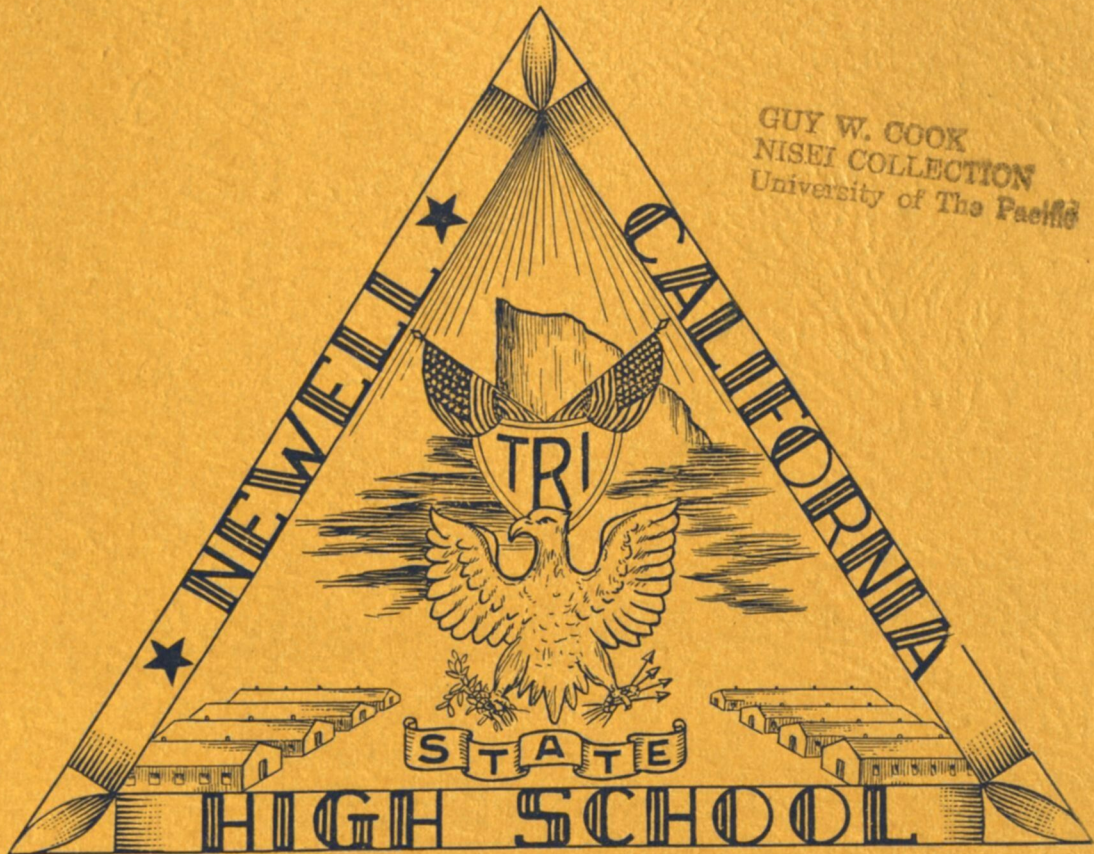
Recommended Citation

Associated Student Body of Tri-State High School, "Aquila 1943 (Tri-State High School Yearbook)" (1943).
Guy and Marguerite Cook Nisei Collection. 5.
<https://scholarlycommons.pacific.edu/cook-nisei/5>

This Pamphlet is brought to you for free and open access by the Japanese-American Internment Collections at Scholarly Commons. It has been accepted for inclusion in Guy and Marguerite Cook Nisei Collection by an authorized administrator of Scholarly Commons. For more information, please contact mgibney@pacific.edu.

AQUILA

1943



GUY W. COOK
NISEI COLLECTION
University of The Pacific

Ex-Libris



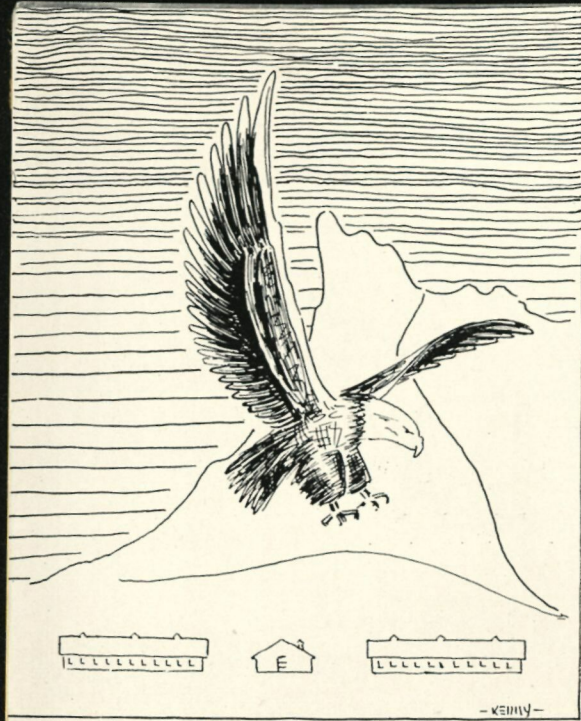
PEP RALLY



AQUILA

Editor-in-Chief MOLLIE YASUTAKE
Assistant Editor ANDREW SUGIYAMA
Assistant Editor MARVIN URATSU
Business Manager MIYUKI INOUE
Adviser DOROTHY PEARSON

PUBLISHED BY
THE ASSOCIATED STUDENT BODY
OF
TRI-STATE HIGH SCHOOL
NEWELL, CALIFORNIA
1943



*Symbol of strength and courage
 Aquila mightiest bird,
 Our guide through storm and chaos
 We'll make our voices heard.*

*Gladly do we follow
 Where you lead the way
 Nor mind the speed or distance
 As we conquer day by day.*

ROSE JEAN RICHTER



ADMINISTRATION



Dedication

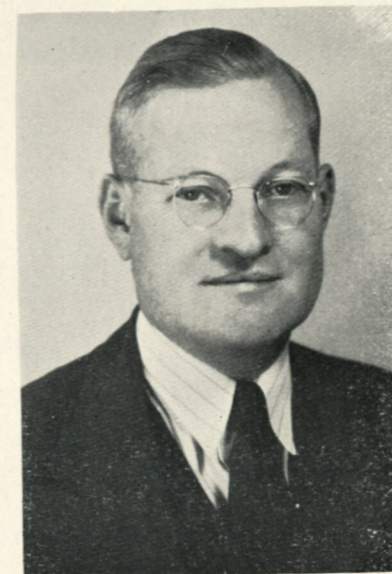
To

KENNETH HARKNESS

*superintendent of the project schools,
in appreciation for all he has done
that we might have the light of knowledge
to guide us into the dark
future without fear,
we dedicate this,
the first edition of the
Aquila*

In Memoriam

CALVIN NITTA



MARTIN P. GUNDERSON
Principal

Principal's Message

"THE AQUILA" may well be called the monument to the cooperative effort of the students and faculty of the Tri-State High School, and also, the first milestone in the history of the school. I wish to congratulate and thank all the people who were responsible for making "THE AQUILA" such an outstanding success.

In behalf of the students and faculty, let me bid farewell to the Senior class of '43, with our sincere wishes for a happy and successful future. May the records made by you at Tri-State High School continue.

Sincerely,

MARTIN P. GUNDERSON,
Principal of the High School



GUY W. COOK
Assistant Principal

MRS. IRENE JADERQUIST
Curriculum Advisor

ARTHUR G. RAMEY
Supervisor of Colonist Teachers



Barbul, Mary English, Social Studies	Billigmeier, Hanny English, Social Studies	Billings, Portia Junior High Core	Breece, Ruth English	Breece, Thomas English, Social Studies, Latin	Burns, Nona Home Economics	Burton, Bessie English, Social Studies
Carter, Nellie Junior High Core	Cheek, Raymond Music	Clark, Zell Music	Cook, Marguerite Junior High Core	Daley, Claudine Science	Desper, Emily English, History	Dickinson, Maud Junior High Core
Driscoll, Carrie Home Economics	Erickson, Agnes Biology	Esser, Norman Science, Math	Greenwood, Florence Commercial	Gunderson, Margaret English, History	Hartt, Charlotte Home Economics	Hartwig, Edetha Problems, Social Science
Hayashi, Helen Problems	Inouye, Tomiko Social Studies	Janes, Elizabeth Junior High Core	Jinguji, Yoshiye Commercial	Johnson, Donald English	Kagiyama, Kiyo Commercial	Katayama, Yuki Problems
					Kirven, Bess English, History	Kishaba, Tom Science

Faculty



Kuroiwa, Chiye Art	LaRoque, Fred Supervisor of Physical Education and Health	Lum, Maryette Music	Lytle, Grover Shop	Manji, Masako Commercial	Momol, James Junior High Core	Miyamura, Kazuto Science
Mizutani, Saburo Commercial	Mochizuki, Michi Junior High Core	Mori, Perry Mathematics	Nicholson, Goldie Junior High Core	Norman, Cleone Art	Palmerlee, Charles Mathematics	Pearson, Dorothy Mathematics
Phillips, Dorothy Art	Richter, Rose Junior High Core	Ritter, Edgar English, Social Studies	Roudabush, Lillie Junior High Core	Roeder, Isabel Social Studies	Sakiyama, Tom English	Schaaf, Alta Social Studies
Smoyer, Jeannette Journalism, Problems, Speech Arts	Starmer, Garrett Sr. Problems, Speech	Swetek, Alice Girls' Physical Education	Swetek, Stephen General Science, World History	VanBuskirk, Garnet Junior High Core	Velasquez, Elisa Language	Yarrow, Harriet Mathematics, Social Studies
Yasui, Tatsumi Language	Zink, Jane Librarian					

Faculty Members Not Pictured

Darcy, Lyman Frost, Charles Fujimoto, Henry Jenson, Clara	Kanow, Taro Koski, Katherine McKay, Jean Ota, Rei Shepard, Aita	Silverthorne, Eada Soderman, Marian Wallis, Ethel Warren, Myrtle Wells, Florence Young, Sarah
--	---	--



ASSISTANT TEACHERS
 Front row: Ramey A., Wada I., Sakuma S., Nakawatase M., Miyaki A., Ichikawa R., Takatsuka M., Nishida F. Second row: Ryugo K., Takahashi Y., Mochizuki K., Morinaga H., Kuge K., Inouye T., Imai A., Kubo G.



SHOP TEACHERS
 Kaneko S., Yamamoto J., Imai A., Shikasho R.



PHYSICAL EDUCATION TEACHERS
 Front row: Nagaiishi K., Swetek A., Asakawa M., Abe R., Taketa G. Second row: Yoshikawa E., Matsumoto M., Tamu a W., LaRoque F. Third row: Ichikawa S., Kajikami J., Hanada H., Sakita G., Mayeda M.



CLASSES



SENIOR CLASS OFFICERS
Arima G., Hasegawa E., Sugiyama A., Koshiba S., Hijikata R.

Senior Class

One school year has passed since the 400 Seniors who composed the graduating class of 1943 answered the call of the imaginary school bells which rang out from the newly organized high school at Newell, California, on September 14, 1942.

Unlike other Senior classes, this class had no specific or established traditions. Because of lack of precedent the members had to assume many responsibilities which normally they would not.

Under the efficient leadership of Tom Haji, president; George Arima, boys' vice president; Ruth Hijikata, girls' vice president; Sumiko Washino, secretary, and Sam Koshiba, treasurer, the Senior class accomplished a great deal. However, because both the president and the secretary graduated in April, Andrew Sugiyama and Ellen Hasegawa were elected president and secretary, respectively, to fill the vacancies.

As the school year drew to a close, many of the normal high school senior traditions were observed. The Senior Ball, under the chairmanship of Hisako Nara-hara and with the support of the Juniors, was a huge success. The Senior Day consisted of a whole school day off for the Seniors to do as they pleased. The class activities drew to a close with the graduation ceremony which saw the Seniors receiving their diplomas in caps and gowns.

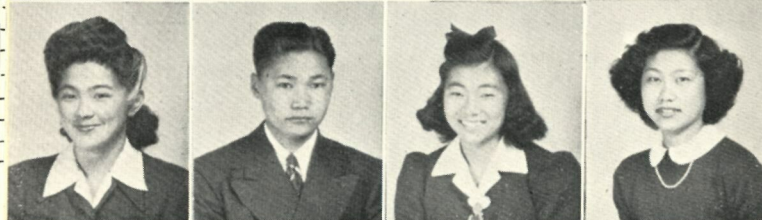
The Senior advisors were Miss Edetha Hartwig, Mr. Garrett Starmer, and Mr. Charles Palmerlee.



Abe, Joe
 Abe, Masako
 Abe, May
 Abe, Miyoko



Aochi, Shiro
 Aramaki, Eva
 Aredas, Dorothy
 Arima, George



Asakawa, Mazie
 Asazawa, Haruo
 Asoo, Lillian
 Doi, Masako



Doi, Setsuko
 Endo, Rayko
 Enomoto, Jerry
 Fujii, Chizue



Fujimoto, Tom
 Fukuhara, Katsuye
 Fukuhara, Sarah
 Fukumori, Taro



Furukawa, Mary
 Goishi, Lillian
 Goto, George
 Hada, Yoshimitsu



Hamada, Chimiko
 Hamaguchi, Kinuko
 Hamamoto, Toshiko
 Hamatani, Nobuko



Hara, Yukio
 Hasegawa, Betty
 Hasegawa, Dorothy
 Hasegawa, Ellen



Hasegawa, Saburo
 Hasegawa, Toshiko
 Hashimoto, Sumi
 Hatamiya, John

Hatano, Gerry
 Hayashida, Bob
 Hijikata, Ruth
 Hikiji, Muroko

Hirabayashi, Ruth
 Hiraga, George
 Hirai, Virginia
 Hirata, Mary

Hirotsu, Takashi
 Hishinama, Shigeo
 Hiuga, Kimie
 Honda, Dixie

Honda, Norman
 Honda, Toshiko
 Hori, Jack
 Horio, Frank

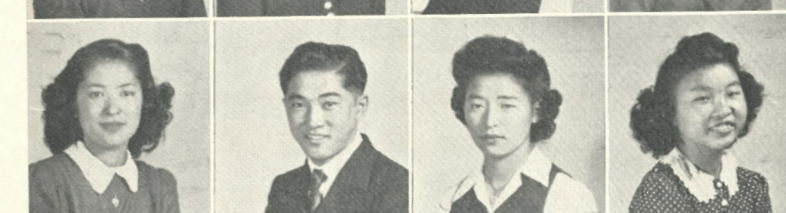
Horio, Helen
 Hyosaka, Kenny
 Ichikawa, Harue
 Ichikawa, Stanley

Idehara, Masuye
 Iida, Noki
 Ikeda, Amy
 Ikeda, Frances

Imagawa, Martha
 Inouye, Miyoko
 Inouye, Miyuki
 Ishida, Cheeko

Ishida, Chizuko
 Ishida, Jack
 Ishida, Matsuye
 Ishigaki, Alyce

Ishihara, Sakaye
 Ishihara, Teiko
 Ishikawa, Fumiko
 Ishikawa, Kimiye

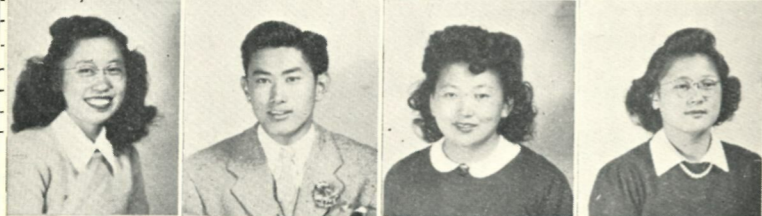




Itano, Edith
 Ito, Dorothy
 Ito, Mary
 Ito, Tayeko



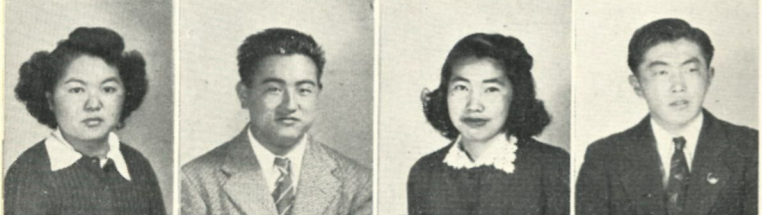
Ito, Yasushi
 Iwamoto, Barbara
 Iwamoto, Emmie
 Iwamoto, George



Iwata, Florence
 Izumi, Kaz
 Kadoyama, Margaret
 Kageta, Sadame



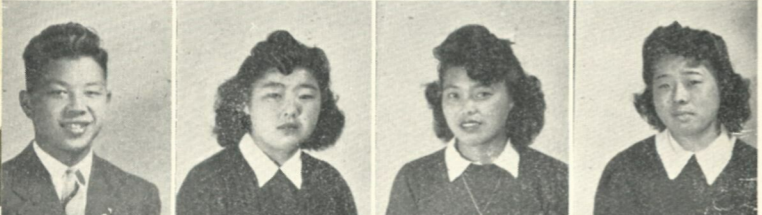
Kageyama, Atsushi
 Kaihara, Betty
 Kajita, Miriam
 Kakudo, Masayuki



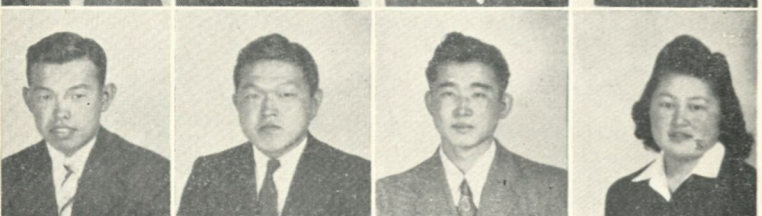
Kaminaka, Ruby
 Kamiya, Satoshi
 Kanai, Kiyoa
 Kanda, John



Kaneko, John
 Kano, Hisako
 Kashiwabara, Hiroko
 Katagiri, David



Katagiri, George
 Kato, Hanae
 Kato, Marie
 Kawahara, Mary



Kawamoto, Ruy
 Kawamoto, Shige
 Kawano, Jerry
 Kawano, Natsuko



Kawano, Toshiko
 Kikugawa, Kay
 Kimura, Sally
 Kimura, Tom



Kimura, Yoshikiyo
 Kinoshita, Kiyoshi
 Kinoshita, Mary
 Kinoshita, Nellie



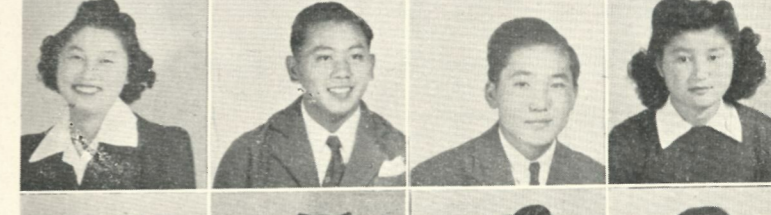
Kinoshita, Rosie
 Kishimura, Kishiko
 Kitagawa, Mae
 Kitahara, Jane



Kitahara, Mick
 Kitajo, Jean
 Kiyono, Masami
 Kiyono, Kazue



Kodama, Molly
 Kodama, Nobie
 Kodama, Robert
 Komiyama, Yuriko



Kono, Molly
 Kosai, Yoshio
 Koshiba, Samuel
 Kubo, Mary



Kubo, Yukiye
 Kumagai, Miyo
 Kunisaki, Mary
 Kurahara, Conrad



Kuramoto, Yoso
 Kurosaki, Fumiko
 Kurotori, Tom
 Kyono, Masatoki



Machida, Roy
 Maeda, Rui
 Maeda, Teruo
 Makishima, Sadako



Mano, Kiyoko
 Maruyama, Sachiko
 Masaki, Mieko
 Masuoka, Noboru



Masuoka, Takashi
 Matsubara, Toshiko
 Matsuda, Mary
 Matsuda, Tom



Matsui, Ben
 Matsui, George
 Matsumoto, Bob
 Matsumoto, Kay



Matsumoto, Marie
 Matsune, Marie
 Matsuo, Helen
 Matsuoka, Mervin



Mayahara, Tomoko
 Mikami, Takumi
 Miyagishima, Mary
 Miyahara, Dorothy



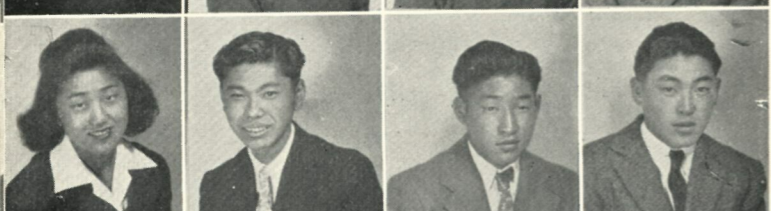
Miyamura, Tommy
 Miyao, Helene
 Miyao, Irene
 Miyoshi, Bob



Mochizuki, Minoru
 Mogi, Yukiye
 Monji, Takeshi
 Mori, Ayako



Mori, George
 Morinaga, Marian
 Morinaga, Momoko
 Morioka, Hideo

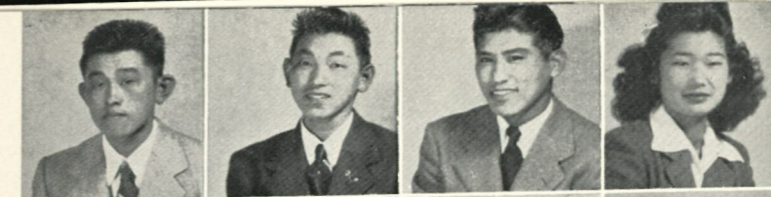


Morioka, Mary
 Morisato, George
 Morishige, Shun
 Motoyama, Masaru



Motoyama, Shizuo
 Munekawa, Fumiko
 Munekawa, Satoru
 Murakami, Masaru

Murata, Tetsuo
 Nagaishi, Hideo
 Nakao, Kiyoshi
 Nakae, Chiyo



Nakai, Masako
 Nakagawa, Betty
 Nakagawa, Kazu
 Nakagawa, Kiyoko



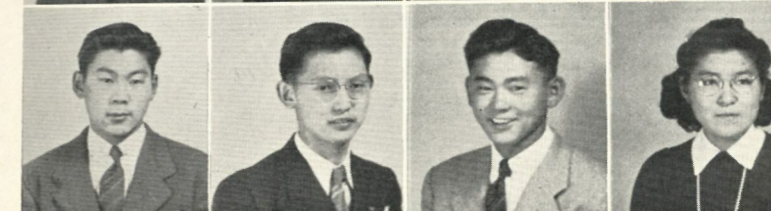
Nakamoto, Kazuko
 Nakamura, Aiko
 Nakamura, Anna
 Nakamura, Irene



Nakamura, Kazuko
 Nakamura, Miyoko
 Nakamura, Sakaye
 Nakanishi, Bob



Nakanishi, Hiroshi
 Nakanishi, Shigeo
 Nakanishi, Ted
 Nakano, Evangeline



Nakaoki, Jiro
 Nakatogawa, Toyoko
 Nakawatase, Fred
 Nakayama, Richard



Namba, Toshiko
 Narahara, Hisako
 Narita, John
 Natsuhara, Frank



Nakazato, Aiko
 Nekoda, Katherine
 Niiyama, May
 Nishida, Shichio



Nishihara, Sumiko
 Nishimura, Yoshiko
 Nishikawa, Ruth
 Nishimi, Kiyoshi

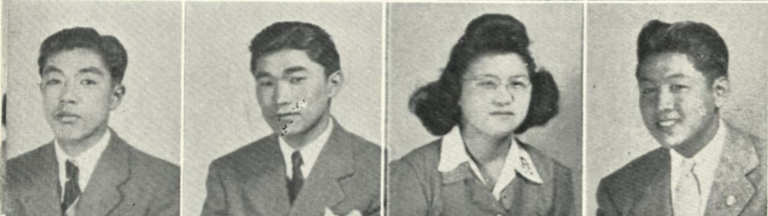




Nishimoto, Dorothy
Nishimura, Mitsuye
Nitta, Emily
Nobuyama, Eiko



Noguchi, Mitsuki
Noji, Toru
Norimatsu, Margaret
Oda, Joe



Oda, Robert
Ogawa, George
Ohama, Aiko
Ohmura, Paul



Okai, Ruth
Okamida, George
Okamura, Kimiko
Okamoto, Maureen



Oki, Aileen
Oki, Midori
Okubo, Michiko
Okubo, Tom



Omoto, Mitsuo
Ono, Harue
Ono, Lois
Ono, Nancy



Osaki, Ayako
Osaki, Yoshito
Oshika, James
Oshiro, Harry



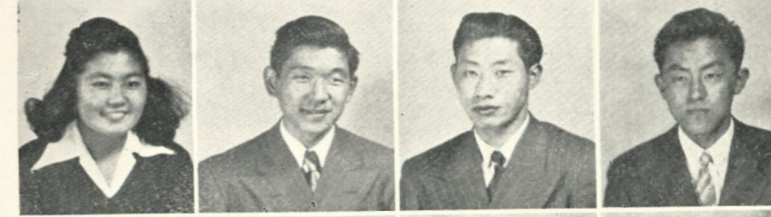
Ota, Hitoshi
Ota, Richard
Ota, Roy
Oto, Tomi



Otsuji, Ben
Otsuji, Mary
Oya, Merry
Ozawa, Esther



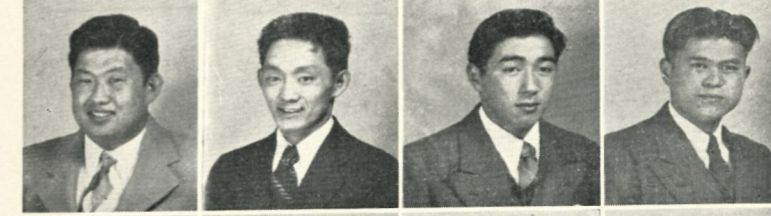
Ozawa, William
Saito, Dahlia
Sakaguchi, Grace
Sakai, Grace



Sakamoto, Akiye
Sakauye, Isamu
Sakayeda, George
Sakita, George



Sakuma, Amy
Sanjo, Marjorie
Sasaki, Jack
Sasaki, Sumiko



Sasaki, Takashi
Sasaki, Tatsuo
Sasaki, Tomotsu
Sasaki, Yukio



Sato, Arthur
Sato, Masahiro
Sekiguchi, Nao
Seto, Louis



Shibasaki, Toshiko
Shibata, Kay
Shigaya, Kin
Shigeno, Florence



Shimada, Fumi
Shimada, Matsuko
Shimoyama, Arusa
Shinkawa, Tayeko



Shintaku, Asao
Shirasago, Masao
Sofye, Yoshiko
Sonoda, Mary



Sorakubo, Hiroshi
Sugimura, Bennie
Sugiyama, Andrew
Sumida, Shizuye



Sumida, Willie
 Suyama, Sakiko
 Suwabe, Takeji
 Suzuki, Francis



Suzuki, Tom
 Takahashi, Michiko
 Takahira, Alice
 Takao, Mona



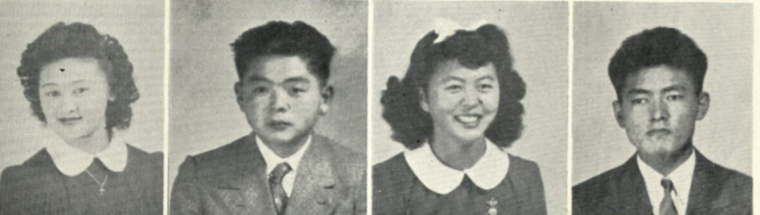
Takao, George
 Takasaki, Tsugiko
 Takayama, Betty
 Takemori, Seiro



Takeshita, Chiyo
 Taketa, Charles
 Tamura, Connie
 Tamura, Marianne



Tanabe, Jane
 Tanaka, Bob
 Tanaka, Eiko
 Tanaka, Kazuo



Tanaka, Yoshiko
 Tani, Yoshio
 Tanigawa, Gracie
 Tanizaki, Masao



Tateyama, Shigeru
 Terada, May
 Toda, Marie
 Toda, Mary



Togami, Yeiko
 Toki, Yuriko
 Tomita, Aiko
 Tomosada, Samuel



Tonomura, Teruko
 Toyoshima, Mary
 Tsuchida, Noboru
 Tsujimoto, Emi

Tsukamoto, Haruko
 Tsukiji, Ted
 Tsurui, Fumi
 Ueda, Shizuko

Uno, Ikuko
 Uwate, Matao
 Uyeda, Etsuko
 Uyeno, Mary

Uyetake, June
 Wakinaka, Asa
 Washino, Sumiko
 Watanabe, Eay

Yagi, George
 Yamada, Mary
 Yamada, Isamu
 Yamaguchi, Atsumi

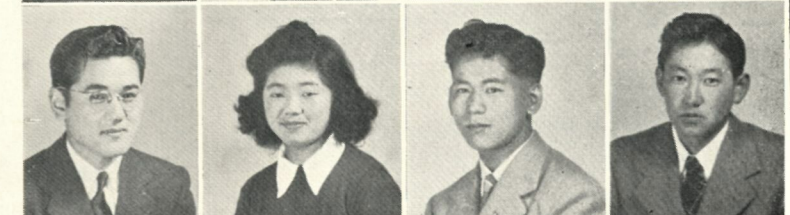
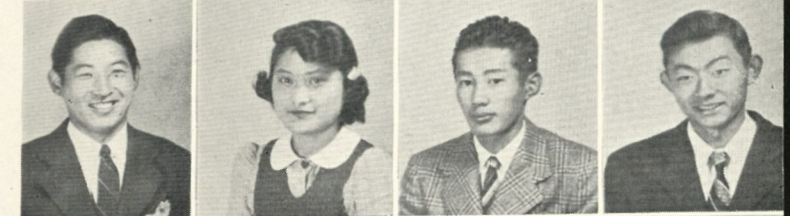
Yamaguchi, Miyoko
 Yamahata, Eisei
 Yamamoto, Aiko
 Yamamoto, Harold

Yamasaki, Mamoru
 Yamasaki, Thomas
 Yano, Carl
 Yasuda, Jerry

Yasutake, Mollie
 Yokoo, Bessie
 Yokoo, Grace
 Yokota, Hiroshi

Yoshikai, Tom
 Yoshikawa, Anna
 Yoshikawa, Edward
 Yoshimi, Richard T.

Yoshino, Hikaru
 Yoshino, Nina
 Yoshizaki, Glory
 Yoshizumi, Alyce

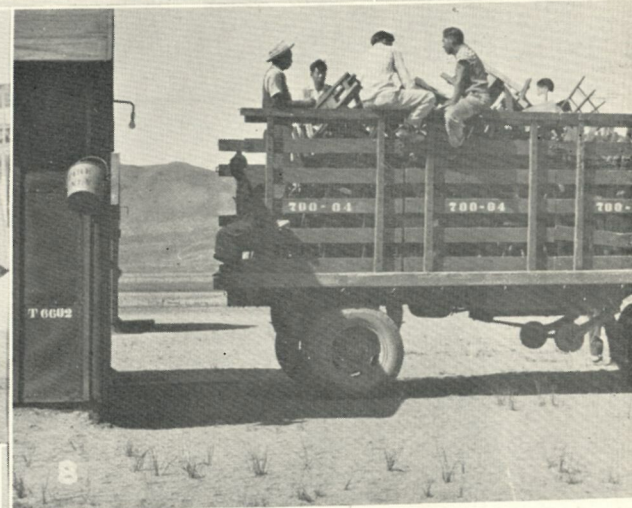




Yumibe, Teruko
Kitagawa, Mei

Camera-Shy Seniors

- | | | |
|-------------------|------------------|-------------------|
| Haji, Tom | Kurimoto, George | Sumada, Tsuguo |
| Hashimoto, Hideo | Menda, Masao | Tanaka, Masahiro |
| Hoshi, Sherman | Mizusaki, Sam | Tenma, Lily |
| Inouye, George | Nishimoto, Nancy | Toyota, Yutaka |
| Irokawa, Isamu | Oda, Tommy | Ueda, Masako |
| Kadowaki, Charles | Okada, Naoto | Uyeda, Tom |
| Kakiji, Harumi | Okusu, Ben | Washizu, Masaki |
| Kawamoto, Riyichi | Oshita, Albert | Yamada, Tom |
| Keiunji, Masaru | Sano, Kiyoshi | Yamanaka, Joe |
| Koike, Hideo | Sato, Victor | Yamashita, Masaru |
| Kono, Sam | Sori, Masaru | Yasuda, Yuriko |



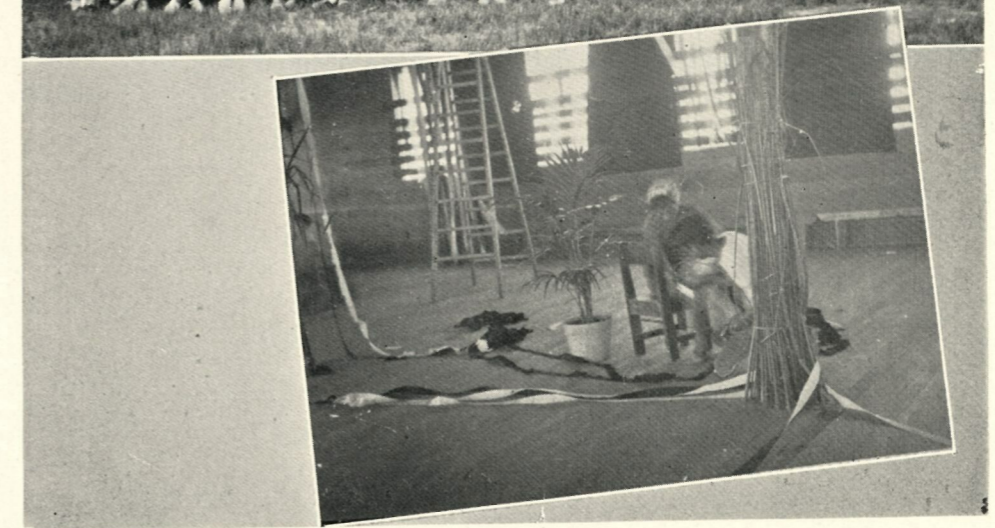
THE SENIOR SCRAWL

- 1—Shoe Sale
- 2—High and Mighty
- 3—Baccalaureate Procession
- 4—Firebreak Finale
- 5—Tops 'em all
- 6—"Kids' Day"
- 7—Ain't they cute?
- 8—Evacuation
- 9—Is ANYBODY happy?

Junior Class



Junior Class





JUNIOR CLASS OFFICERS
Kurahara L., Oto M., Sasaki T., Manji G., Iwasaki J.

Junior Class

The class of '44, under the guidance of Miss Isabel Roeder, Miss Carrie Driscoll, and Mr. Raymond Cheek, elected the following officers: Thomas Sasaki, who succeeded Jack Tashiro, as president; LaVern Kurahara, boys' vice president; Jean Iwasaki, girls' vice president; Mitsy Oto, secretary, and Grace Manji, treasurer.

Eager to participate in various activities, the Junior class sold delicious doughnuts at the "Kanaka Carnival."

The highlight of the Juniors' social life, the Junior-Senior Prom, was held June 25. Over a hundred couples enjoyed the Prom, the theme of which was "Silhouette of the Night." The music was provided by the "Down Beats."



SOPHOMORE CLASS OFFICERS
Hijikata L., Namba L., Mizoue J., Hayashi B.

Sophomore Class

With the help of the class advisors, Miss Mary Barbul and Mr. Stephen Swetek, the Sophomores boast of a successful year. During the year the following officers were elected: Johnny Mizoue, president; Ken Nakatogawa, boys' vice president; Betty Hayashi, girls' vice president; Lilly Namba, secretary, and Lilly Hijikata, treasurer.

Displaying fine school spirit and not lacking in executive ability, the Sophomore class was well represented in all campus activities. The boys won the consolation prize in the interclass basketball tournament. The highlight of the class sponsored chain of events was the Freshman-Sophomore Day, June 16, which was climaxed with the Freshman-Sophomore Swing.

Sophomore Class



Sophomore Class



Freshman Class



Freshman Class





FRESHMAN CLASS OFFICERS
 Front row: Sakamota W., Fukami M., Ohashi M.
 Second row: Sato M., Mr. Johnson, Sumada M.

Freshman Class

Efficiently led by President Mits Sumada; Boys' Vice President Willie Sakamoto; Girls' Vice President Mitsuko Sato; Treasurer Martha Ohashi, and Secretary Martha Fukami, the Ninth Graders have blazed the trail for the coming freshman classes of Tri-State High.

The Frosh contributed to the "Kanaka Carnival," April 30, by selling pop, ice cream, ribbons, potato salad, and French pies. They collaborated with the Sophomores in putting over the Freshman-Sophomore Day and Freshman-Sophomore Swing.

The advisors were Mr. Donald Johnson and Mrs. Emily Desper.



EIGHTH GRADE CLASS OFFICERS
 First row: Sato J., Nakamura M.
 Second row: Munekawa R., Mukai J., Tsuchida S.

Eighth Grade

One of the younger classes of our Tri-State High, the Eighth Graders under the guidance of Miss Florence Wells have successfully completed their last year in Junior High.

The Eighth Grade officers were: Shoji Kubo, president; Jackie Mukai, vice president; Mary Nakamura, secretary; Roy Munekawa, treasurer. After two quarters, vacancies in the offices of president and secretary were filled by Sam Tsuchida and June Sato, respectively.

The whole class heartily took part in helping the Junior Red Cross by collecting old jig-saw puzzles, making scrapbooks, quilts, and wood carvings, and knitting sweaters.

Eighth Grade



Eighth Grade





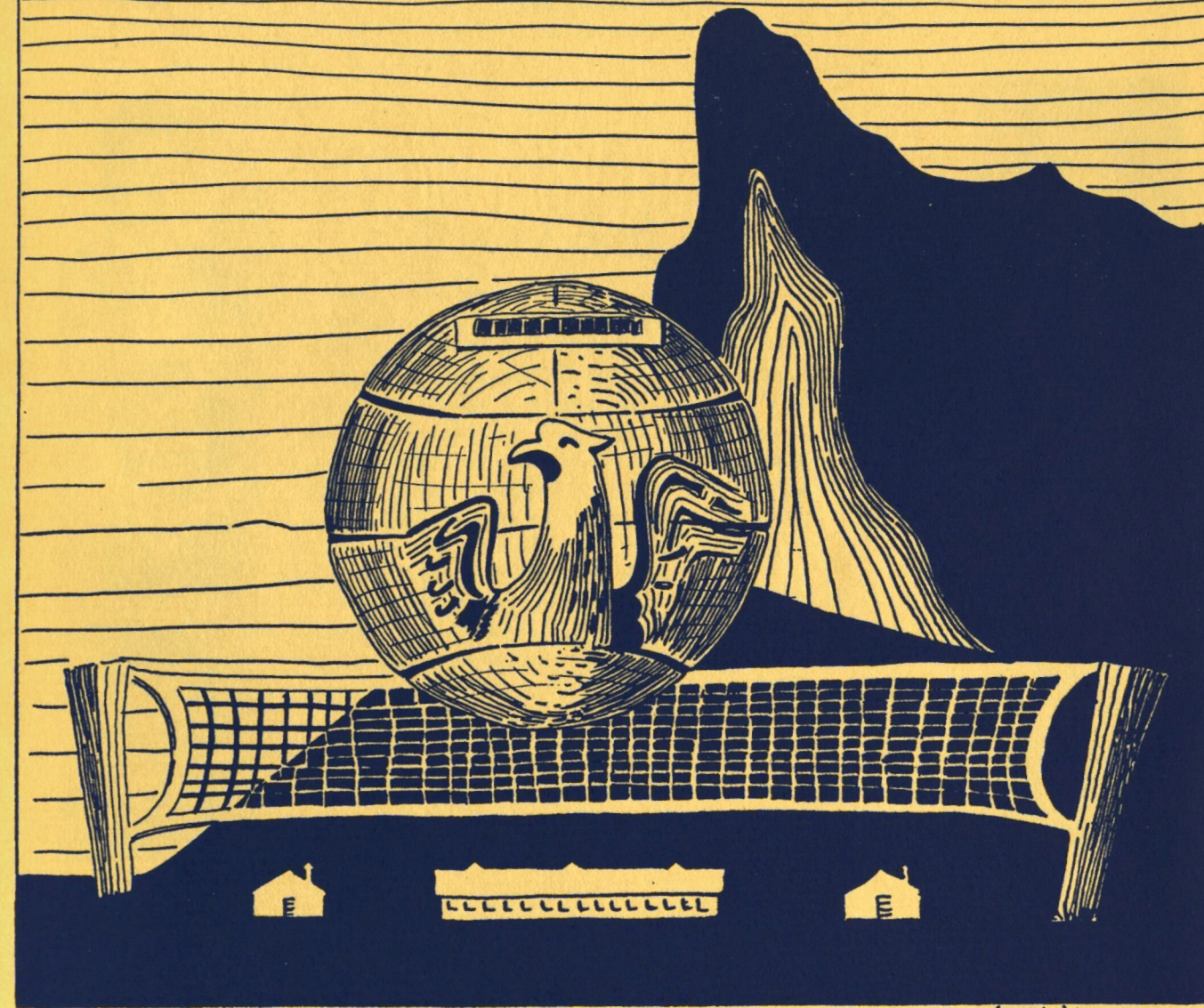
SEVENTH GRADE CLASS OFFICERS
Murata J., Hamatake N., Yoshii J., Hatamiya G.

Seventh Grade

The industrious group of young students you saw selling taffy and hamburgers and maintaining a dart throwing stand at the Yearbook Carnival were the Seventh Graders.

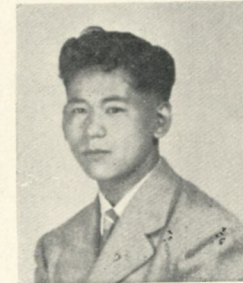
Boasting a record of being one of the earliest classes to be organized, it has gone on to become one of the most active classes in the school. Besides contributing to the Yearbook Fund, they sponsored a contest with the Eighth Grade for the selection of a prince and princesses to reign over the Carnival. George Hatamiya, the class prexy, and Elsie Eto won the coveted titles. Mrs. Marguerite Cooks' class proudly holds the record in the Red Cross membership drive by enrolling more students than any other class in Tri-State High School.

Other activities in which the Seventh Grade classes have taken part were: trips to the farms, a thorough study of relocation, regular assemblies, making and giving gifts to the children in the hospital during Christmas, and maintaining other well rounded activities.

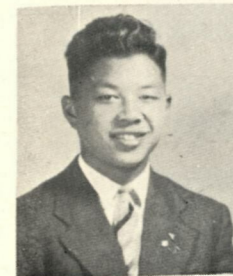


Sally Hosaka '43

ACTIVITIES



Edward Yoshikawa



George Katagiri
May Abe
Hisako Narahara



Mollie Yasutake
Miyuki Inouye
Conrad Kurahara

Student Body Officers

With the installation of officers on January 21, 1943, the Tri-State student government became a reality, and executive work began under the advisorship of Mr. Garrett Starmer.

With the departure of the girls' vice president, Peggy Yamamoto, Mollie Yasutake was elected to fill that position. Shigeo Nakanishi was appointed by the president to take over the office of chief justice which was vacated by Tom Haji, another relocatee. During the third quarter, the commissioner of cooperatives was added to the list of student body officers. John Kanda was appointed by the president as commissioner of cooperatives *pro tem*.

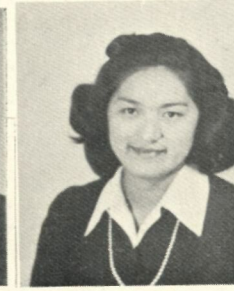
During the second quarter Principal Martin P. Gunderson officially approved of 7111-C as the student government headquarters. After several weeks of construction work, the inner office took shape as the "Student Government Office."



Paul Ohmura



Nobie Kodama



Michiko Takahashi



Dorothy Aredas



Hiroshi Nakanishi



STUDENT FORUM

Front row: Shintaku A., Uratsu M., Koshiba S., Makashima C., Yasutake M., Takano A., Kumasaka R., Yamamoto S. Second row: Abe M., Fujimoto F., Oshika J., Masuoka T., Matsumoto Y., Miyaoka F., Osuga J., Akita N., Tsukamoto M. Third row: Enomoto J., Tamaki T., Sato A., Yamasaki L., Osaki M., Hatamiya G., Murata J., Okano B., Arima J. Fourth row: Tanaka R., Mochizuki M., Fujimoto T., Seto L., Mr. Starmer, Katagiri G., Kanemoto A.



STUDENT FORUM

Front row: Hanamoto L., Matsuo H., Yoshizaki G., Hijikata R., Doi M., Fukumori S., Goishi M., Sakamoto E., Oto M., Sekiguchi N., Sadamori E., Fujihara K., Aredas D., Hiuga K., Katagiri G. Second row Mochizuki M., Shintaku A., Mizoue Y., Norimatsu M., Manji J., Aredas S., Takeda M., Masunaga F., Nakamura J., Hayashi M., Hayano K., Nakao A., Hashimoto K., Fukai R. Third row: Seto G., Fujimoto F., Oshika J., Kumasaka Y., Mizoue J., Arima J., Tanaka R., Sumada M., Tamaki T., Nakanishi S., Arima G., Sugiyama A., Koshiba S., Sasaki T. Fourth row: Sato K., Sato A., Enomoto J., Fujimoto T., Tamiyasu M., Numata J., Hiraga G., Matsuda T., Mr. Garrett Starmer, Kanemoto A., Sato S., Yoshikai T., Nakanishi T., Shibata K., Yumibe T.

KNIGHTS OF HONOR

Front row: Shimasaki G., Yorita P., Morimoto A., Fujihara K., Tsugawa S., Hikiji M., Nakamura M., Tanabe M. Second row: Mizoue J., Wada J., Nakaoki J., Kanda J., Osuga J., Sasaki J., Sakuma A., Mizoue Y. Third row: Himoto S., Matsumoto L., Iwamoto G., Yoshikawa E., Mr. Starmer, Katagiri G., Kanemoto A., Arima G.



RALLY COMMITTEE



TRI-STATE ANGELS

PHOTOGRAPHY CLUB





EXECUTIVE STAFF

Front row: Toki A., Nakamura M., Sugiyama H., Hayano H., Hayashi B.; second row: Hayashida B., Shintaku A., Mochizuki M., Nishimoto H., Fujimoto T.

ANNUAL STAFF

Inouye M., Sugiyama A., Uratsu M., Mollie Yasutake

EXECUTIVE STAFF

Front row: Motomatsu G., Kinoshita R., Tamura M., Ishikawa J., Miyao H.; second row: Miss Pearson, Kashiwbara K., Enomoto J., Koshiba S., Hyosaka K., Inouye M.

Aquila Staff

Starting to work late in May, under the advisorship of Miss Dorothy Pearson, was a very enthusiastic and hard working annual staff led by Editor-in-Chief Mollie Yasutake.

The name Aquila was chosen as the name of the yearbook from among the many names entered in the name contest sponsored by the staff.

The picture taking was the major difficulty which held back the progress of the Aquila. The priorities on films and various other handicaps were severely felt. Other than that the Aquila made rapid progress.

Since this was the first edition of the Aquila, and time was short, the staff was faced with a tremendous task.



ANNUAL ADVISORY COMMITTEE

Front row: Hasegawa E., Sakamoto E., Nomiya S., Iwasaki J., Yamanaka M., Sekiguchi N., Takao M., Kimura S., Kano H., Yoshizumi A.
 Second row: Moriki S., Kajita M., Hiuga K., Hirabayashi R., Itano E., Hamatani N., Shigeno F., Tanaka Y., Akita N., Yoshizaki G., Hijikata R., Kamikawa L.
 Third row: Tamaki T., Okuda W., Kitahara M., Sugimura B., Seto L., Sakita G., Sato A., Hada Y., Tsujikawa S.
 Fourth row: Katagiri G., Kurahara C., Kanda J., Ishida J., Masuoka T., Nakanishi S., Sato K.



TRI-STATER STAFF

Front row: Miss Smoyer, Yoshizaki G., Uratsu M., Hayashida B., Sakita G., Nakamura M.
 Second row: Oya M., Sofye Y., Morioka L., Kawano N., Niiyama M.

TRI-STATE MANAGING STAFF

Munekawa S., Yoshikawa E., Iwamoto G., Matsuda T., Nobie Kodama

TRI-STATER STAFF

Front row: Saito M., Sekiguchi N., Akita N., Hasegawa E., Yasutake M., Ota R.
 Second row: Kanda J., Inouye M., Abe M., Kadoyama M., Fukuhara K., Yoshizumi A., Enomoto J.

The Tri-Stater Staff

The 1942-1943 Tri-Stater staff managed to publish their first edition of the school paper on October 5 under the editorship of Nobie Kodama.

During the first quarter the staff operated under very severe and trying conditions, resulting from insufficient facilities and inexperienced workers.

By borrowing the mimeograph machines from the Administration Building and *The Tulean Dispatch*, the staff struggled valiantly but successfully in order to have a two-page paper issued about once a month.

The third quarter brought about many improvements. The advanced journalism class took over the managership of the Tri-Stater and published a four-page paper weekly.



TRI-STATER REPORTERS

Front row: Sato M., Kitahara M., Hiraga B., Okuda W., Sasaki T., Tanigawa G.
 Second row: Yoshino N., Manji G., Nakamura S., Kawakubo T., Toki Y., Nakamura K.
 Third row: Namba L., Shigeno F., Kumagai M., Mogi Y., Motomatsu G., Hayano H.



Tri-State Strutters

First row: Sakuma H., Ohashi K., Yamanishi M., Yorita P., Yamamoto S.
Second row: Makiyama S., Suguro S., Takasugi A., Ogino Y., Igarashi R., Kawakami S., Kiyokawa S.

Senior Speech Club

First row: Mochizuki M., Sasaki T.
Second row: Hasegawa E., Abe M., Inouye M., Kodama N.
Third row: Shintaku A., Koshiha S., Yasutake M., Hayano H., Yamasaki L.

Needle Art Club

First row: Hamatake N., Ishimoto A., Toyoda M., Nakao A., Nakamura J., Furukawa R.
Second row: Shimotori M., Nakanishi T., Otsubo M., Ike S.
Third row: Noguchi M., Tanabe M., Ishida J., Miss M. Dickinson, Taketa H., Omura L., Nakagawa M.

Zoology Club

Sakurada T., Tamiyasu M., Miss A. Erickson, Numata J., Matsuda A.

CHEMISTRY CLUB

First row: Arima G., Ishida J., Masuoka T., Kiyono M., Yamaguchi E.
Second row: Nomiya S., Yamanaka M., Idehara M., Uye-
da E., Yumibe K.
Third row: Nomiya K., Sakamoto E., Ajima M., Tamura C.
Fourth row: Kubo G., Tamaki T., Matsumoto B., Matsumura A., Sakuma K., Matsui B., Nakanishi S., Mr. Miyamura.



HORIZON GIRLS

Front row: Hoshiwara T., Tamura C., Hamaguchi K.
Second row: Nishikawa R., Ono L., Niiyama M., Hamagu-
chi T., Urushibata I.
Third row: Miss Wells, Nakamura S., Yokobe M., Furuta M., Mrs. Kawauchi



JUNIOR HI-Y

Front row: Mr. Ritter, Iwamasa H., Noguchi K., Shintani K., Nakagawa A., Kiyono S.
Second row: Fukai R., Nishikubo G., Kumasaka Y., Naka-
mura W.
Third row: Kumasaka H., Matsuda A., Otani H., Fukuzawa B., Kajihara H., Takagi C., Hasegawa P.



JUNIOR CAMPFIRE GIRLS

Front row: Yamashita F., Yamanishi M., Terashima D., Urushibata F., Ishihara M.
Second row: Yoshikai R., Kumagai S., Kawahisa K., Kawata Y.
Third row: Miss Billings, Kosai M., Nakagawa S., Kosai M., Morimoto M., Hayashi L.





Tri-State Thespians

First row: Miss J. Smoyer, Akita N., Mitsutome K., Hasegawa E., Sasaki T., Kurahara C., Hasegawa L., Mukai A.

Second row: Kiyono M., Hirabayashi R., Tsuchiya M., Sakamoto E., Goishi M., Hijikata R., Saito D., Nakagiri A., Hayashi B.,

Third row: Hiraga G., Aredas D., Motomatsu G., Kanda B., Sasaki A., Kamikawa L., Uyetake J., Ishikawa J.

Fourth row: Arima G., Kiyono M., Takahira A., Nakagiri K., Oya M., Yasutake M., Sasaki J., Saito M.

Red Cross

Front row: Nakagiri A., Shintaku A., Katagiri D., Norimatsu M., Hayashi B., Namba L., Mrs. Schaaf, Miss Hartt, Miss Carter, Kato K.

Second row: Kamikawa L., Ohashi M., Yoshikawa S., Inouye M., Hirabayashi R., Iwasaki J., Kuroko J., Sato T., Hamaguchi T., Nomiyama K., Yoshimoto N.

Third row: Ishihara M., Abe F., Mori P., Morioka M., Nakamura M., Uyetake J., Nakao K., Makishima S., Mano K., Masui S., Yoshida G., Fukuhara G.

Fourth row: Isaki N., Kinoshita M., Yoshizuka R., Takemoto R., Nishimi R., Kajita S., Hasegawa P., Numada J., Tsujikawa S., Oki M.

Speaker's Bureau

Front row: Sasaki T., Kiyokawa K., Hayano H., Kuki T., Kurahara C., Oshika J., Katagiri G.

Second row: Arima G., Yamamoto C., Abe M., Inouye M., Hasegawa E., Yasutake M., Hamai T., Suyehiro G.

Third row: Akita N., Yoshizaki G., Hijikata R., Oto T., Mr. Starmer, Aredas D., Ajima M., Kajita E.



Art Club

First row: Miss C. Kuroiwa, Kuki T., Yoshida K., Miyazaki J., Masuda G., Nishikawa R., Mrs. C. Norman.

Second row: Sakurai H., Kurotori T., Noguchi M., Okamida G., Kanemoto A.

Third row: Dote B., Sakayeda G., Nagaishi H., Nakamura N., Ishihara S.

Tri-State Slammers

Front row: Hasegawa L., Aredas S., Asakawa M., Hijikata R., Yoshikawa E., Aredas D., Hasegawa E., Yasutake M.

Second row: Muneawa S., Matsuda T., Miss Kirven, Koshiba S., Yumibe T.

Commercial Club

Front row: Kinoshita R., Namba T., Ono L., Kano H., Ishida C., Uyetake J., Oto T., Miyao H., Kakiuchi Y., Uchiyama H.

Second row: Oki A., Yoshioka Y., Shirasu J., Miyao I., Goishi L., Miss Manji, Mr. Mizutani, Mano K., Hamaguchi K., Kimura S., Kajiura M.

Third row: Sonoda M., Nishimoto D., Yamamoto A., Kato M., Okada M., Morimoto A., Yamada B., Ono H., Uyeda T., Sano Y.

Fourth row: Tamura M., Kitajo J., Kinoshita M., Osaki A., Kato E., Yoshino N., Kono M., Hatano G., Goishi M., Kimura U., Tsugawa T., Oto M.



MUSIC CLUB

Front row: Nagao K., Muraoka C., Tenma R., Takehira A., Saito D., Tanaka N., Tamura M., Masui S., Nakamura G., Kimura S.

Second row: Miss Clark, Uyeda E., Ishida S., Makishima S., Sakayeda L., Habu K., Sato L., Kinoshita M., Kawano H., Kimura H.

Third row: Nakamura N., Fujii V., Fujii A., Mizoguchi S., Taira M., Tsuchiya M., Yamanaka M., Takehira J., Nakagiri K., Murakami M.



COSMETOLOGY

Front row: Tanaka D., Nakagawa K., Miss Tsujikawa, Osaki A., Kinoshita R.

Second row: Oda L., Tomita R., Hishinuma K., Miyao H., Miyao L., Goishi L., Joe M.

Third row: Sadamori E., Tameno R., Nakamoto K., Sakai S., Nakamoto K.



EXCALIBUR CLUB

Front row: Mr. Sakiyama, Umeta A., Kuki T., Uwate M., Hirotsu T., Hara Y.

Second row: Sakurai K., Nishi J., Yoshikawa A., Oshita E., Kajita Y., Goi M.

Third row: Sakurai H., Okano I., Tanizaki M., Yamasaki T., Tanaka K.



Home Economics Club

First row: Nakamura M., Kawano N., Kimura S., Masunaga F., Masui S., Naname L., Yoshii R., Nakahira R., Kimura H.

Second row: Yamanaka K., Tanaka D., Yamanishi M., Miyamoto H., Sugaro M., Kosai M., Miyagishima M., Yoshino C., Miss Burns.

Third row: Yamada F., Morinaga M., Terada M., Toda M., Nakamura F., Mano K., Ishida C., Natsuhara S., Mizokawa M., Takahashi C.

Senior Hi - Y

First row: Hanada H., Nakaoki J., Arima G., Osuga J., Sasaki T., Sugiyama A., Kiyono M., Kanda J., Mr. A. Ramey.

Second row: Ishida J., Munekawa S., Sasaki J., Nakanishi H., Nakanishi T., Koshiha S., Nakanishi S., Kurahara C., Yoshikawa E.

Third row: Nakagawa A., Fukai R., Iwamoto G., Okamura F., Katagiri G., Sato S., Sakita G., Ohmura P., Hiraga G.

Nature Guides Club

Front row: Noguchi K., Fujimoto F., Kuzuzawa B., Kubo S., Arima J., Sako S.

Second row: Tanaka R., Uyeda C., Nishimura T., Higaki J., Fukui B., Owada S., Mr. Swetek.





Girls' Senior Glee Club

SCHOLARSHIP SOCIETY
 Front row: Itano E., Akaoshi S., Oto T., Himoto S., Kiyono M., Koshiha S., Mano K., Narahara H., Kumagai E.
 Second row: Tsuchiya M., Yoshioka Y., Yoshii R., Uyeda T., Hayano H., Akita N., Nakamura M., Nomiya K., Kajita M.
 Third row: Sakamoto E., Goishi M., Aredas D., Okada M., Morimoto A., Masui S., Hamada A., Kukumori S., Kanda B.
 Fourth row: Sato K., Mochizuki M., Katagiri G., Itano M., Sato A., Adachi K., Nishikubo G., Kosai Y., Tanaka R.



Boys' Senior Glee Club

SCHOLARSHIP SOCIETY
 First row: Kageta S., Inouye Miyuki, Arima G., Kanda J., Munekawa S., Hasegawa E., Yasutake M., Mr. R. Cheek.
 Second row: Morinaga M., Sekiguchi N., Yeda S., Inouye Miyoko, Kuki T., Matsuda M., Kiyono K., Fujii F., Jinguji K., Hasegawa B.
 Third row: Niiyama M., Hamaguchi K., Oya M., Hamaguchi T., Tamura C., Kawano T., Matsumoto M., Nakamura S., Kawano H., Toki A., Hashimoto K.
 Fourth row: Abe M., Norimatsu M., Nakanishi S., Ohmura P., Fukai R., Tanabe B., Uratsu M., Sugiyama A.



Junior Girls' Glee Club

ORCALINGTON
 Front row: Shibahara K., Fujioka R., Horiuchi K., Kawasaki K.
 Second row: Kamihara T., Hamada H., Ichiba S., Yoshida G.
 Third row: Sasaki D., VanBuskirk M., Tomita R., Tomita L., Mayeda R.
 Fourth row: Miss Carter, Mrs. VanBuskirk.



SENIOR GIRL RESERVES
 First row: Taketa M., Uchiyama H., Inouye B., Manji G., Iwasaki J., Omura R.
 Second row: Kano H., Sano Y., Sato T., Tomolke H.
 Third row: Toki Y., Norimatsu M., Nakanishi T., Iwasaki T., Mrs. Schaaf, Okada M., Hasegawa B., Kokuichi Y.



GIRLS' SENIOR GLEE CLUB

First row: Miss Lum, Hiuga K., Hirabayashi R., Sasaki A., Tamura M., Tanaka N., Ito D., Tsurui S., Honda D., Ohashi M., Kumasaka R., Nakagiri K., Toshiako K., Kumagai M.
 Second row: Habu K., Sakaeda, L., Mogi Y., Aredas D., Kaneko L., Tsujisaka M., Keikoan Y., Hijikata L., Fujiye R., Hayashi M., Fujihara M., Fujihara G., Hirata F., Omura G.
 Third row: Hyogo M., Abe J., Takano B., Yamada K., Kimura H., Kawano H., Kinoshita M., Kawata N., Uyetake M., Yuasa A., Takagi S., Sato L., Mitoma H., Takagi Y., Nakamura G.
 Fourth row: Kozumi E., Ishii M., Yamashita M., Asoo L., Kaname M., Otsuji M., Yoshizumi A., Tsuda Y., Tenma R., Nomura D., Iwasaki J., Aredas S.

BOYS' SENIOR GLEE CLUB

Front row: Iwasa G., Iida T., Maeda T., Yoshizuka J., Hada Y., Mochizuki M., Hitomi R., Hiraga B.
 Second row: Miss Clark, Nakagawa A., Sugimura B., Koshiha S., Kitahara M., Matsumoto K., Koyasako S., Takemoto S.
 Third row: Shintaku A., Tomita K., Fujimoto T., Morisato G., Tanabe A., Okuda W., Kageyama W., Nishimoto H., Kawano J.

JUNIOR GIRLS' GLEE CLUB

First row: Yoshimoto J., Kawamoto M., Ogata S., Muramoto J., Nakao A., Oki H., Taketa H., Ishida J., Katsumata J., Nishimura A., Okamoto R., Matsushima M., Yoshizuka G., Kanemoto A., Oshika F., Morisaki P.
 Second row: Miss Z. Clark, Miss H. Morinaga, Nakamura J., Sunada G., Yamada E., Matsumoto Y., Tomita L., Fukushima D., Haratani M., Suguro S., Kubo M., Ike M., Kiyono S., Kinoshita M., Nakai M., Uno H., Hamada M., Hiuga B.
 Third row: Ishii S., Yamamoto K., Fukikawa B., Ajima R., Tamiyasu T., Fukami M., Usui M., Hiralka K., Ishibashi R., Makishima S., Ishida S., Imagawa M., Tokunaga P., Mio R., Tokunaga R., Furushio L.
 Fourth row: Usui T., Yoshii J., Furukawa J., Yoshizumi S., Sato J., Tomita R., Nakatani L., Sako M., Sasaki D., Kawasaki K., Horiuchi K., Fujioka R., Kusachi H., Hishikawa Y., Urushibata E., Shibahara K.
 Fifth row: Hamada H., Kamihara T., Sakumura A., Fujita A., Yamaji F., Ikenoyama K., Washizu N., Nishizaki A., Tomita J., Furukawa M., Endo L., Tamiyasu S., Tamiyasu H., Ishihara M.



BAND

First row: Hida E., Hida A., Nakai C., Matsumoto M., Nishimoto H., Frost G., Motoyama H., Yoshimoto W., Mukai J., Ichikawa B.
 Second row: Takahashi Y., Nakai C., Kiyokawa K., Tsujikawa S., Sasaki T., Doi J., Murakami R., Matsuda T., Nakamura J.
 Third row: Morimoto P., Ishimoto N., Suzuki F., Hatamiya R., Saito K., Kishimura H., Fujii W., Motoyama B., Mr. R. Cheek.

Music Department

Lead by Mr. Raymond Cheek and his assistant, Mr. Yuichi Takahashi, the school band and orchestra has acquired a prominent standing in the new school organization in spite of the numerous inevitable handicaps. Over 100 performances have been made by this department alone, including solos, group entertainment, assemblies, and concerts.

The Senior Boys' and Girls' Glee, under the direction of Miss Maryette Lum and Miss Zell Clark, have also been very successful.

The highlights of the Music Department were participation in the Fall and Spring Music Concerts, Open House, Young Peoples' Christian Conference, and the Easter Pageant.



ORCHESTRA

First row: Richter J., Inouye M., Nakatani L., Miyahara F., Kodama Y., Osaki M., Fujioka K., Hamada J., Yoshida E., Yokote D., Kanemoto A.
 Second row: Matsuda T., Kawano H., Fujii V., Fujii A., Miyao H., Tenma R., Uyeda E., Maki-shima S., Ishida S., Tanaka R., Fukuda J.
 Third row: Takahashi Y., Kimura H., VanBuskirk M., Mizoguchi S., Muraoka C., Kaname L., Yoshimoto J., Tsuchiya M., Sakashita M., Mr. R. Cheek.



Basketball

CHAMPIONS—JUNIORS

First row: Tomita B., Kiyama T., Tsujisaka J., Mitsui S., Yoshimura S.
 Second row: Keiunji M., Kashiwabara K., Kiyama J., Fukuda Y., Kajikami J.
 Third row: Goto G., Okuda W., Kurahara L., Mayeda M., Fujira G.

**CONSOLATION WINNERS—
SOPHOMORES**

Sitting: Ota T., Mizouye J.
 Standing: Tanaka G., Enkoji S., Muraki S.

FRESHMEN

First row: Watanabe B., Hyosaka A., Hosokawa T., Fujimoto F., Iwata R.
 Second row: Okamura T., Terada N., Takemoto S., Iwata H., Higaki J.

SENIORS

Sitting: Ota H., Hayashida B., Seto L.
 Standing: Enomoto J., Matsui G., Mochizuki M., Sugiyama A.



Boys' Sports

Football was the first sport which was played by the Tri-Staters. Nearly all students participated in touch football in their respective P. E. periods.

The basketball highlight of the season was the two-day interclass tournament under the supervision of the P. E. department. The juniors, coached by Jim Kajikami, captured the tourney by a comfortable margin. The consolation prize was taken by the sophomores under the coaching of Tad Matsushita. (Each of these two winners received a trophy with the player's names on them.)

With the arrival of new baseball equipment, the Boys' League sponsored the successful softball interclass tournament. By virtue of a win over the freshmen, the juniors went on to win the championship by again defeating the seniors 6 to 2.



RELAY TEAM
J. Nakaoki, B. Matsumoto,
C. Kurahara, L. Kurahara,
S. Yoshimura

CUP WINNERS
L. Kurahara, K. Oda, T. Fujino, Mgr.

DISTANCE RUNNERS
Yosh Hada, Aki Hada

SHOTPUT
Norman Yasui



FIRST AID

Girls' Sports

Although lacking a gymnasium, the coeds of Tri-State were all out for sports. Under the leadership of Mrs. Stephen Swetek, exciting tournaments were held which proved to be a lot of fun for the girls. In case of bad weather the girls played popular indoor games. Social dancing was held for dance enthusiasts once a week.

Also, to meet any emergencies which might arise, the Senior and Junior Coeds were required to take first aid. Their teachers were Miss Ruby Tanabe, Miss Ruth Abe and Mr. George Taketa. Students who successfully completed the course were given first aid certificates.



SOCIAL DANCING



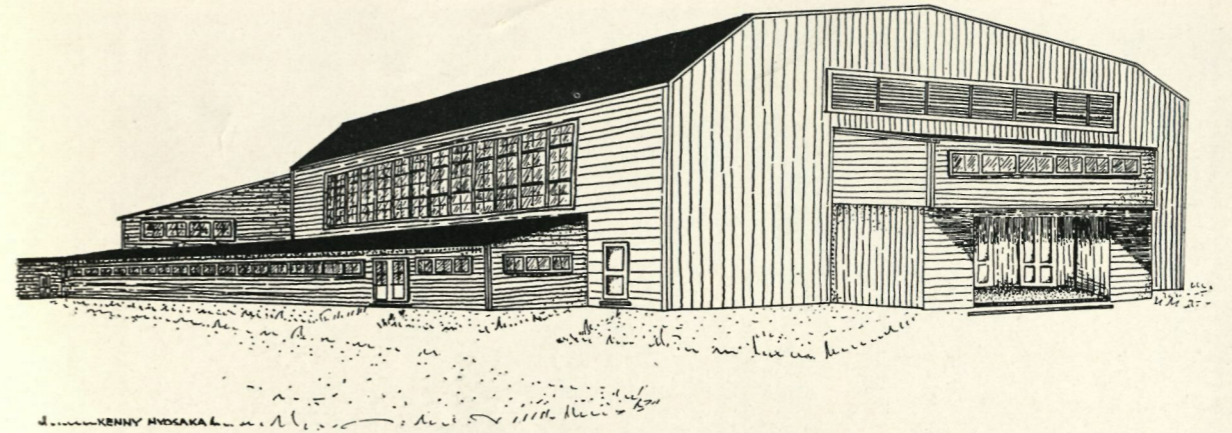
VOLLEY BALL

BASKETBALL



Kelly

FEATURE



School History

Out in a desolate sand plateau in Northern California stands a row of 20 tar papered barracks, our Tri-State High School which opened its doors to 2400 students on September 14, 1942. In its pioneer days the classrooms were bare but as the weeks rolled by, stoves, tables, benches, books, blackboards and other school equipment were provided, thus bringing about more of a school atmosphere.

On October 5 the school paper, later named the Tri-Stater, made its first appearance. About the same time the school received its present name of Tri-State, as well as its school symbol—the golden eagle, and the colors blue and gold.

The first school dance, "School Daze Swing," was held on October 15. The "Turkey Jive" was the only other social held during the first quarter. School dances were held in different mess halls in the colony.

Probably the most notable event in the fall of 1942 was the potato harvest. At this time the project farm, suffering also from the nation-wide manpower shortage, called on Tri-Staters to aid them in their potato harvesting. The Tri-Staters wholeheartedly pitched in for the whole month of October.

With such a start, Tri-State ended its first quarter on December 24, with a Christmas vacation of one week before the second quarter.

Evidence that Tri-State was to practice democratic principles was shown when a constitution was drawn up for student government. Student body elections were held on January 14, 1943. Edward Yoshikawa was elected student body president.

Socials, clubs, and classes were being organized and activities were getting into full swing when school was closed from February 9 until March 25 for the colony-wide registration.

After this vacation, a "Hello Day" was held on April 2 to create a more friendly atmosphere among its students. At this time the classes, which elected their officers on February 9, were given their first opportunity to function as a group. Tentative plans for a school yearbook were also underway about this time.

Perhaps the biggest, the most successful, and the most memorable school event was the "Kanaka Carnival," which was held on April 30 on the school campus. This carnival was held for the purpose of raising money for the Aquila. Each organization in school contributed by participating in various concessions. King Conrad Kurahara and Queen Teruko Yumibe with Prince George Hatamiya and Princess Elsie Eto reigned over the day.

The third quarter was filled with one activity after another. Rallies were held weekly; several inter-class track meets were sponsored by the Boys' League, a four-page Tri-Stater was distributed every week; student activity card sales soared; annual sales were reopened; a scholarship fund drive went into full swing; and campaign, election, and inauguration for next year's student body officers were held. Highlighting the social events of the year were the Junior Prom and the Senior Ball.

With such a hectic but memorable year, Tri-State closed its doors to its students for the 1942-1943 school term on July 16. Next fall a brand new and modern high school will be opened.





JUNIOR GIRLS

Ajima, Mary
Akita, Nancy
Akiyama, Asaye
Akiyama, Jessie
Asazawa, Erimo
Baba, Miyoko
Doi, Lucie
Fujihara, Katherine
Fuji, Alice
Fujioka, Mary
Fujita, Mary
Fukuhara, Sally
Furuta, Mary
Goishi, Mary
Hamada, Alice
Hamaguchi, Teiko
Haratani, Sumiko
Hayami, Sumiko
Hayano, Hannah
Hayasida, Natsuye
Hayata, Muroko
Higashi, Emiko
Higuchi, Shizue
Hiraga, Irene
Hirano, Ellen
Hiraoka, Rose
Hirata, Michiko
Hori, Mary
Hyogo, Lilly
Igarashi, Roseline
Ike, Asako
Imagawa, Yukiye
Inai, Naomi
Inouye, Bessie
Inouye, Miyoko
Ishii, Michiko
Ishizuka, Yuriko
Iwasaki, Jean

Masunaga, Fumiye
Masuoka, Suame
Matsunami, Doris
Menda, Nancy
Mikami, Haruko
Mikami, Yayeko
Mizokawa, Miyuki
Morimoto, Akiko
Morioka, Lilly
Morita, Margaret
Osaki, Sachiko
Oshita, Masako
Osuga, May
Oto, Mitsy
Otsuka, Haruko
Oya, Ruth
Oyama, Katherine
Sadamori, Eleanor
Sakagawa, Ruthie
Sakakihara, Elma
Sakamoto, Akiye
Sakamoto, Edna
Sakata, Mary
Sakazaki, Teruko
Sasaki, Yuriko
Sato, Shizuko
Satow, Haruko
Sekiguchi, Lucille
Seto, Dorothy
Soga, Rosie
Suguro, Mitsue
Sumihiko, Marian
Suyama, Nobuye
Takagi, Kazuko
Takahashi, Mildred
Takahashi, Carol
Takeda, Lilly
Yuriko
Takeda, Mae

Omura, Rose
Ono, Chiyeko
Ono, Helen
Yumiko
Miyake, Grace
Sadako
Miyamoto, Hatsue
Miyamoto, Kimiye
Mizokawa, Miyuki
Morimoto, Akiko
Morioka, Lilly
Morita, Margaret
Osaki, Sachiko
Oshita, Masako
Osuga, May
Oto, Mitsy
Otsuka, Haruko
Oya, Ruth
Oyama, Katherine
Sadamori, Eleanor
Sakagawa, Ruthie
Sakakihara, Elma
Sakamoto, Akiye
Sakamoto, Edna
Sakata, Mary
Sakazaki, Teruko
Sasaki, Yuriko
Sato, Shizuko
Satow, Haruko
Sekiguchi, Lucille
Seto, Dorothy
Soga, Rosie
Suguro, Mitsue
Sumihiko, Marian
Suyama, Nobuye
Takagi, Kazuko
Takahashi, Mildred
Takahashi, Carol
Takeda, Lilly
Yuriko
Takeda, Mae

Murakami, Toshiye
Murakami, Helen
Murata, Dorothy
Nagishi, Sachiko
Nagano, Florence
Nagasa, Emi
Naito, Michiko
Nakagiri, Kiko
Nakahira, Ritsuko
Nikaido, Eva
Nakamoto, Kazuo
Nakamoto, Rose
Nakamura, Grace
Nakamura, Catherine
Nakanishi, Kikuye
Nakao, Kimiko
Nakashige, Mary
Nakata, Lily
Namba, Masae
Namba, Mitsuko
Narita, Dorothy
Narita, Marie
Nishimi, Louise

Nishimura, Nobuko
Nomura, Dorothy
Noritake, Chiharu
Oda, Lucy
Ogino, Yae
Okamida, Teruko
Okamura, Virginia
Okasaki, Kazuko
Okihara, Akiko
Okimura, Reiko
Okumura, Fumiko
Okumura, Mae
Onchi, Yoshiko
Ono, Mary
Nobuko
Osaki, Hideo
Elaine
Oshihara, Helen
Kimiko
Miyamoto, Etsuko
Miyano, Teruko
Miyasaka, Asako
Morimoto, Mary
Morimoto, Mary
Oshiro, Florence
Ozawa, Violet

Sakai, Sumi
Sakata, Tomiko
Sakazaki, Hideo
Sako, Etsuko
Sakuma, Fumiko
Sano, Yoneko
Eunice
Sasaki, Anne
Sato, Lina
Sato, Teruko
Sato, Toshiko
Satow, Yoko
Shibata, Flora
Hanako
Shijo, Tsuyako
Shimada, Toshiko
Shimasaki, Gladys
Shimoyama, Nellie
Shinbo, Lois
Shirasu, Jan
Sekiguchi, Nobu
Sonoda, Bessie
Suguro, Mae
Takagi, Fujiko
Takagi, Yuriko
Takahashi, Mary

Takeshita, Alice
Taketa, Amy
Tamiyasu, Toshie
Tanaka, Chiyeko
Tanaka, Teri
Tanaka, Thelma
Tenma, Ruth
Tokunaga, Kiyoko
Tokunaga, Yukiko
Tomita, Ruth
Tomolke, Hisako
Toyota, Irene
Tsuchiya, Mary
Meriko
Tsuda, Betty
Tsuda, Yone
Tsuji, Masako
Tsukamoto, Masako
Tsurui, Sumi
Ueda, Kazuko
Uchiyama, Haruko
Usui, Mary
Uyeda, Evelyn
Uyeno, Tayeko
Washino, Sadayo

Washizu, Miyoko
Watanabe, Masako
Yabe, Shigeo
Shila
Yabuki, Masako
Yagi, Elizabeth
Yamada, Amy
Yamada, Mable
Hisako
Yamaguchi, Alice
Hamaye
Yamamoto, Nan
Yamamoto, Seiko
Yamasaki, Nanami
Yamashita, Jean
Yamashita, Mabel
Yaeko
Yasu, Mine
Minnie
Yasumura, Mitsuko
Yeya, Kazuko
Yoshida, Betty
Yoshida, Sachiko
Yoshi, Rose
Yoshimoto, Joy
Yoshimoto, Ruby
Yoshino, Patty
Yoshino, Shizu
Yoshioka, Yoshiye

JUNIOR BOYS

Abe, Kay
Adachi, Kiyoshi
Aoyama, Mitsuo
Asahara, Mitsuteru
John
Asai, Gene
Dairiki, Sadao
Doi, Peter
Fujihara, Ben
Fuji, Daibo
Fujinaga, Roy
Fujioka, Isao
Fujioka, Tak
Fujioka, George
Fukuda, Yoshiaki
Fukuzawa, Jun
Goto, George
Guro, Yoshio
Hada, Yoshiaki
Hamai, Tommy
Haratani, Jimmy
Haruta, Buster
Hashiguchi, Nagatoshi
Hashimoto, Seizo
Hashimoto, Tsugi
Hikawa, Charles
Himoto, Sam
Hiraga, Ben
Hiratsu, Takashi
Hisata, Tom
Honda, Toru
Iida, Jyo
Imagawa, Tom
Imura, Koichi
Inami, Sui

Mayeda, Mike
Masayuki
Mitsui, Sam
Miyagawa, John
Hideo
Miyamoto, Nobuo
Miyasaki, Carroll
Mizoguchi, Akira
Mizuno, Michio
Monji, Min
Morikawa, Jim
Moriki, Hiroshi
Murakami, Ray
Nakahara, Sadao
Nakashima, Joseph
Nakamura, Joe
Nakamura, Noboru
Nakamura, Ted
Nakao, Tom
Nakatani, Kabo
Nakatsu, Sam
Nakawatase, Jim
Nakayama, Iwao
Natsuhara, George
Nishida, Joe
Nishihara, Susumu
Nishimoto, Henry
Nishimoto, Koe
Katsumi
Nishimoto, Yoshi
Nishimura, Richard
Nitta, Jack
Niwa, Carl
Nobuyama, Kaz
Nomura, Raymond
Obata, Ken
Ogawa, Henry

Ohashi, Toru
Okai, Koso
Okamoto, Peter
Okamura, Fred
Okita, John
Okita, Yoshi
Okuda, Woody
Masaru
Osada, Tak
Oshima, Yoshiki
Otani, Shig
Saito, James
Saito, Morse
Sakamoto, George
Sakurai, Hiroshi
Sasaki, Thomas
Hideo
Sato, George
Sato, Kunito
Sato, Sam
Sato, Stanley
Sato, William
Sera, George
Seto, David
Shibata, Kenneth
Shigeno, Harry
Shimizu, Roy
Shimozaki, Sam
Sunahara, Kay
Suyehiro, George
Takagi, Robert
Takasumi, Ned
Takayama, Yoshio
Taketa, Hideo
Taketa, James
Takemoto, George

Tamaki, Ted
Tetsuo
Tamano, Ray
Tanabe, Arthur
Tanabe, Beishi
Tanaka, Kazuo
Tanimoto, George
Taura, Mas Bill
Togami, Tak
Tomita, Jun
John
Tomita, Nobuyuki
Tomita, Toshiaki
Tomolke, Kiyoshi
Tsuchii, Kiyoshi
Tsujikawa, Stanton
Tsuji, Junie
Stanley
Uratsu, Marvin
Usui, Roy
Uyeda, Jack
Wasano, Jimmie
Yagi, Frank
Yamada, Kay
Kaworu
Yamagawa, Kay
Keiji
Yamaguchi, Edward
Yamane, Edward
Yokota, Paul
Yokota, Willie
Yoshida, Hiroshi
Yoshikai, Henry
Michio
Yoshikawa, Luther
Akira
Yoshimura, Shig
Yoshimura, Toshiji
Yoshizuka, Jack
Yumibe, Toshio

Akahori, George
Arima, Kenji
Asazawa, Ken
Baba, Masahago
Enkoji, Susumu
Frost, Gordon
Fujimoto, Yoshio
Fuji, James
Fukai, Richard
Fukuhara, Warren
Gekko, Mitsugi
Goishi, Wataru
Hamamoto, Masao
Hamasaka, Paul
Hamatani, Minoru
Hamamoto, Ben
Hasegawa, Paul
Hashiguchi, Nobuo
Hayashi, Hideo
William
Hayashi, Tom
Higuchi, Shozo
Hirabayashi, Sam
Hirai, Fred
Hishikawa, Shun
Hori, Frank
Ichikawa, James
Iida, Ted
Ike, Toshio
Ikeda, Mitsuru
Imamura, Naoto
Inouye, Shingo
Ishihara, Shigeru

Ishihara, Teruo
Ishikawa, Frank
Iwasa, George
Iwata, Eddie
Tatsumi
Izumi, Yutaka
Kanaya, Tosh
Kashiwagi, Isamu
Kawachi, Hiro
Kawahara, Yoshio
Kawamoto, Tomi
Kawamura, Roy
Kikuchi, Ernest
Kikumoto, Yushi
Kimura, Hikaru
Kishaba, Kay
Kitazumi, Calvert
Kohaya, William
Kokawa, Fred
Kondo, William
Korehiro, Harry
Koyano, Miki
Koyasake, Sueno
Masuda, Tom
Masunaga, Yuzo
Masuoka, Kayoshi
Matsubara, Jean
Matsuda, Lloyd
Matsumoto, George
Matsumoto, William
Matsunami, Yoshio
Matsuo, Samuel
Matsuura, Shiro

Michihira, Katsumi
Nakatogawa, Ken
Nimura, Nobuya
Nishida, Roy
Shiro
Nishikubo, George
Nishimoto, Yoshi
Nishiyama, Tome
Nodahara, Eugene
Nomura, Noboru
Numata, Jules
Oda, Kahn
Obara, Wichi
Okada, Harold
Okada, Noboru
Ota, Hiroshi
Ota, Tsutomu
Otsuji, Sadao
Fred
Saito, Harry
Sakaguchi, Johnnie
Sakai, Howard
Sakamoto, Kay
Sakamoto, Sam
Sakamoto, Willie
Sakayue, Shoji
Sakazaki, Shoya
Sakamura, Joe
Sakurada, Toshiaki
Sanjo, Richard
Sasaki, Lloyd
Seike, Kiyoshi
Shiguya, Harry
Shimada, Minoru

Soga, Casey
Sumida, George
Sumita, Masahara
Takagi, Calvin
Takahashi, Frank
Takano, James
Takatsuga, George
Tamiyasu, Mickey
Tamiyasu, Shoji
Tanura, George
Tanaka, George
Taniguchi, Jack
Tateyama, Mas
Terada, Tom
Tomita, Kazuo
Tsuda, Gus
Tsuji, George
Ueda, Akira
Uyeda, Henry
Uyeno, Yokio
Wakabayashi, Yoshi
Watanabe, Joe
Watanabe, George
Yabumoto, Nao
Yabumoto, Tada
Yamada, Tom
Yamamoto, Robert
Yamasaki, Leonard
Yamasaki, Toshiaki
Yasui, Norman
Yorita, Jimmy
Yoshioka, Ben

SOPHOMORE GIRLS

Abe, June
Junko
Abe, Tomiko
Abe, Edith
Akahoshi, Seiko
Akita, Waseo
Aredas, Susan
Asao, Rose
Fuji, Chieko
Fuji, Fusae
Fuji, Violet
Fujioka, Barbara
Fujimoto, Grace
Fujimoto, Mitsuko
Fujioka, Mary
Fujishin, Helen
Fujiye, Rose
Fukuda, Takako
Fukuhara, Akiko

Fukumori, Sumako
Furukawa, Amy
Habu, Kimiko
Hamada, Mary
Hamasaki, Kazuyo
Haratani, Sally
Hasegawa, Lillian
Hashiguchi, Chieko
Hata, Lillie
Hayami, Miyo
Hayashi, Betty
Yoshiko
Hijikata, Lilly
Hirata, Haruko
Hirata, Haruko
Hishinuma, Kikue
Hiuga, Margaret
Honda, Dorothy
Nobuko
Horita, Shizuko

Hoshiwara, Taeko
Ichiba, Mishiye
Iida, Rosie
Inami, Shigeo
Ito, Dolly
Iwasaki, Janet
Jinguji, Kimiye
Kamikawa, Lily
Kamikawa, May
Kaminaki, Lury
Kamine, Yukino
Kaname, Betty
Kanda, Lilly
Kaneko, Lily
Kasahara, Fumiko
Katsumata, Eiko
Kawai, Alice
Kawakami, Bertha

Kawakami, Kiko
Kawano, Mary
Konda, Amy
Kono, Sumiko
Kawata, Hisako
Keikoon, Yoshiko
Kimura, Hisako
Kitajo, Peggy
Kobayashi, Sumi
Kodani, Yasuko
Koshiba, Amy
Kosai, Hatsumi
Kosobayashi, Tatsuko
Kuki, Toshiko
Kumagai, Eunice
Kumasaki, June
Kumashira, Mae
Kunugi, Fugi

Kuroko, Jane
Maekawa, Jean
Makino, Margaret
Tatsuko
Makishima, Alma
Makiyama, Hideo
Manji, June
Masui, Taiko
Matsuhara, Jean
Matsumoto, Elaine
Matsumoto, Mabel
Matsune, Aiko
Matsuo, Mary
Miyahara, Tsugiko
Mitsutome, Kazuko
Morita, Yuriko
Moriya, Yoshiko
Murakami, Martha

Matsubara, Alice
Matsuo, Mary
Matsura, Sumi
Matsusawa, Noriko
Menda, Shizue
Morita, Tetsuko
Muraoka, Caroline
Muraoka, Rose
Nagao, Kazue
Nagaoka, Bernice
Nakagawa, Elsie
Nakahara, Yuriko
Nakamura, Joan
Nakamura, Kimiko
Nakanishi, Ruth
Nakata, Mabel
Nakatsuka, Margaret
Nakuchi, Mae
Natsuhara, Amy
Natsuhara, Kiyoko
Natsuhara, Sumi
Niguma, Kiyoko
Nishiguchi, Yukio
Nishiyama, Betty
Nobuyama, Sumi
Obayashi, Yoneko
Ogata, Sue
Ogata, Terry
Ohashi, Kiyoko
Ohashi, Martha
Oizumi, Fuku
Okamoto, Grace
Okazaki, Ikeko
Oki, Rose
Okubo, Kiyume
One, Shizuye

Osada, Chiyeko
Miyano, Amy
Mizoguchi, Sally
Mizuri, Natsuko
Mizumoto, Chiyoko
Mizumoto, Lily
Yuriko
Mochizuki, Mariko
Moriki, Sue
Morioka, Helen
Morita, Rose
Oshita, Alice
Ota, June
Otsuji, Sumi
Sakaeda, Lily
Sakaguchi, Fusako
Florence
Sakita, Dolly
Sasaki, Molly
Sato, Mitsuko
Sato, Ruth
Setsuko
Shimada, Ellen
Shimada, Irene
Shimasaki, Dorothy
Suwabe, Kaoru
Taira, Michiye
Takagi, Miyoko
Takagi, Satsuki
Takahashi, Mabel
Takahashi, Nancy
Akiko
Takahira, Judy
Takano, Amy
Fusako
Takano, Betty
Takeda, May
Takeshita, Irene
Taketa, Koharu
Taketa, Rosie
Tameno, Ruth

Tani, Amy
Tanihara, Lillian
Terada, June
Tok, Ayako
Tokino, Hisako
Tokunaga, Michiko
Tokuyoshi, Kimiyo
Tomita, Kay
Tsuicida, Lola
Tsuji, Annabel
Tsuji, Fumiko
Uchihara, Fusa
Umeta, Amy
Umezue, Yaeiko
Uyeda, Sachiko
Uyemura, Kimiye
Uyetake, Mitsuye
Mitzi
Yamada, Florence
Harumi
Yamada, Grace
Yamagiwa, Norrie
Yamaguchi, Edith
Yamaguchi, Fumiko
Yamaguchi, Yoshiko
Yamamoto, Frances
Yamamoto, Helen
Yamamoto, May
Yamamoto, Shizuko
Ruby
Yamashita, Helen
Sumako
Yamashita, Yukiko
Yano, Rose
Yasuda, Fusako
Yasutake, Fannie
Yomogida, Virginia
Yorita, Patsee
Yoshikawa, Miwako
Yoshikawa, Sumiko
Yoshikawa, Toshiko
Yoshizuka, Jean
Teruyo
Yuasa, Ayako

SOPHOMORE GIRLS—CONTINUED

SOPHOMORE BOYS

FRESHMAN GIRLS

FRESHMAN BOYS

Abey, George
Adachi, Akio
Akiyama, Charles
Akiyama, Henry
Arima, James
Asai, Itsu
Dol, Joshua
Date, Ben
Enkoji, Archie
Enomoto, Shigeru
Fujii, Alfred
Fujii, Robert
Fujimoto, Frank
Fujita, Frank
Fukuda, Joseph
Fukui, Ben
Fukui, Sumio
Fukuzawa, Benny
Funakoshi, Tadashi
Goi, Frank
Hamada, Itaru
Hamatani, Osamu
Hatamiya, Roy
Hatamiya, Tom
Hatano, Asayuki
Hattori, Nobuyuki
Higaki, Jiro
Hikawa, Frank
Hikawa, George
Hirabayashi, Dan
Hirai, Masashi
Hirata, Fujii
Hitomi, Dick
Hitomi, Ronald Kenji
Horio, Fred
Hoshisaki, Touru
Hosokawa, Tamotsu
Hosokawa, Alfred
Hosokawa, Sumio
Imagawa, Thomas Takashi

Ishibashi, Roy
Ishihara, Sam
Ishimoto, Norman
Itano, Masashi
Iwama, Hiroshi
Iwata, Herbert
Iwata, Roy
Joe, Takaji
Kajita, Haruo
Kajihara, Harry
Kajita, Sutter
Kajita, Yoshimi
Kakiuchi, Minoru
Kameda, John
Kamihara, George
Kanemoto, Albert
Kashiwagi, George
Kataoka, Dick
Kato, Masao
Kawamoto, Dick
Kawano, Ray
Kelunji, Hideo
Kinoshita, Shoji George
Kishimura, Isamu
Kono, Norman
Kosai, Aigo
Kouchi, Kaz
Kubo, Shoji
Kubota, Fred
Kumano, Hiromi
Kumasaka, Hisashi
Kumasaka, Yukio
Kyono, Susumu, Sue
Maeda, Sam
Maekawa, Bob
Mano, Toshio
Matsubara, Donald
Matsuda, Arthur Toru
Matsumoto, Ben
Matsumoto, Lew

Matsumoto, Shurei
Miho, Tom
Mishiro, Terry
Miyagawa, Starr
Miyata, Harry
Miyoshi, Edward
Morioka, Edward
Morita, Claude
Morita, Hiroshi
Morita, Moki
Motomatsu, Hisashi
Motoyama, Ben
Murakami, Earl
Murakami, Migami
Murakami, Noboru
Murakami, Bob
Nakagawa, Fred
Nakagawa, Isamu
Nakamura, Satoru
Nakamura, Yoshio J.
Nakanishi, Mitsuo
Nakanishi, Tadashi
Nakao, Isashi
Nakayama, Roy
Nakayama, Tatsuo
Natsuhara, Giichi
Natsuhara, Joe Muneo
Nekota, Hajime
Nishikawa, Joe
Nishimura, Buddy
Nishimura, Tatsuo
Niwa, Francis
Noda, Albert
Noguchi, Kinya
Nomiyama, Yasuo
Norimatsu, William
Murata, Yoshio
Oda, Shoji
Ogata, John
Okai, Tom

Okamura, Takashi
Okano, Iwao
Okazaki, Tom
Inouye, Richard
Okura, Fred
Okusu, Joe
Ono, Yoshi
Orife, Yukio
Oshima, Keiso
Ota, Bill Kiyoshi
Otani, Hod
Otani, Noboru
Owada, Eddie
Owada, John
Owada, Saburo
Oyama, Marvin
Oyanagi, Nobukazu
Ozawa, Leslie
Sakamoto, Willie
Sakashita, James
Sakatani, Kaneo
Sako, Shoji
Sakuma, Kiyoshi
Sakurai, Howard
Sasaki, Fumio
Sasaki, Louis
Sasaki, Robert
Sato, Yoshi
Shimada, James
Shimono, Sam
Shimosaki, Gene
Shintani, Kazumi
Shiratsuki, Tsutomu
Soga, George
Sumada, Mits
Sumida, Tatsuo
Suyama, Minoru
Takasugi, Mitsuo
Takasumi, Fred Norio
Takemori, Masaki
Takemori, Shiro

Takeoka, Hoover
Taketa, George
Tamura, Kiyoshi
Tanaka, Richard
Tanaka, Sam
Taniguchi, Theodore
Tanino, Katsumi
Terada, Henry
Terada, Noble
Terashima, Frank
Togami, Kazumi
Tomita, Yoshinori
Tomoi, Yutaka
Tomaya, Raymond
Tsujioka, Kazuo
Tsumura, Yoshio
Tsuruda, Tom
Uyeda, Charles
Uyeda, Jim
Wada, Yoshikiyo
Wakamatsu, Tommy
Wakamatsu, Masaaki
Watanabe, Bob
Yamada, Ben
Yamada, Isamu
Yamada, Matsuo
Yamoji, Frank
Yamane, Tommy
Yamasaki, Henry
Yamasaki, Satoru
Yamashita, Masao
Yasuda, Toshio
Yokota, Tom
Yonemura, Harry
Yoshikawa, Albert
Yoshikawa, Hubert
Yoshikawa, Marvin
Yoshimi, Isamu
Yoshimoto, Akito
Yumikura, Eddy

SEVENTH GRADE GIRLS

Abe, Frances
Abe, Irene
Amemiya, Misuye
Antoku, Edith
Arima, Kazuko
Taniguchi, Theodore
Doi, Akiko
Doi, Kimiko
Donao, Yuriko
Endo, Lilly Hideko
Enkoji, Teruko
Eto, Elsie
Fujii, Kimiko Jean
Fujikawa, Michiko
Fujimoto, Amiko Emma
Fujioka, Shizue
Fukuhara, Grace Takeko
Furukawa, Jessie
Furukawa, Mae Makiko
Furukawa, Ruby
Hamada, Hisako June
Hamada, Jane
Hamatake, Norma
Hamamoto, Lila
Hashiguchi, Elko
Motomatsu, Reiko Nancy
Murakami, Nancy
Muramoto, Jean
Muranaka, Mary
Mutow, Aiko
Nakagawa, Kiyoko
Nakamura, Jeanne
Nakamura, Mitsue Lucille

Ikenoyama, Kiyoko
Imabori, Yayeko
Inouye, Kazuko
Ishida, June
Ishimoto, Amy
Kagiya, Mary Satoko
Kajikawa, Harriet Kikuko
Kajitani, Clara Miyuko
Kamikawa, Emiko
Kanaya, Sumiko
Katayama, Emily
Kawakami, Miko
Kojima, Webba
Konishi, Kazuo
Kitahara, Kazuko
Kiyama, Jane Shizue
Kosobayashi, Mieke
Kubo, Keiko
Maeda, Ruth Etsuko
Makishima, Clara Tamaye
Matsui, Aiko
Morita, Satsuki Mae
Motomatsu, Reiko Nancy
Murakami, Nancy
Muramoto, Jean
Muranaka, Mary
Mutow, Aiko
Nakagawa, Kiyoko
Nakamura, Jeanne
Nakamura, Mitsue Lucille

Nakanishi, Teruko
Nakao, Alice
Nakatani, Jean Motoko
Nakayama, Kazuko
Niyama, Keiko
Nikajdo, Rita
Nishiyama, Noreen Kikuye
Noguchi, Mae
Obata, Kayoko
Okizumi, Annie
Okizumi, Helen
Okubo, Betty Kiyoko
Omachi, Hiroko Joan
Omachi, Jean Aiko
Omura, Lily
Onoye, Keiko
Onoyama, Sumiko
Mizobe, May
Mizoue, Yoshie
Mizui, Kiyono
Mochizuki, Etsuko
Mori, Pat
Otsubo, Marian Michiko
Sakai, Meteko
Sakata, May Fumiko
Sakata, Mary
Sakaue, Mae
Sakiyama, June
Sasaki, Mazie

Sato, Akiko
Sawai, Molly
Shida, Margaret
Shimada, Kazuko
Shimizu, Mitsuye
Shimono, Chiyoko Grace
Shimotori, Madeline
Shintaku, Yoshiko
Sofye, Masako
Sonoda, Lily
Sonada, Rosie
Sugiyama, Helen
Suhama, Yone
Sunedo, Noruya Grace
Takagi, Florence
Takagi, Lucille
Takao, Jo Ann
Takayama, Kiyoko
Takemura, Gloria Sumi
Taketa, Ayako Rose
Taketa, Lilly
Taketa, Sumiye Happy
Tamaki, Jean
Tamiyasu, Suzie
Tamura, Alice
Tanabe, Florence
Tanabe, Michiko
Tanikawa, Eiko Naomi
Tanino, Takae
Teshima, Margie
Tokunaga, Yoshiko

Tomita, Junko June
Toyama, Doris
Toyoda, Masuko
Toyota, Dorothy Tsuyumi
Tsuchida, Peggy
Tsukimura, Vivian
Usui, Teruko
Uyeda, Janet Masuyo
Uyetake, Toby Tomiko
Yagi, Ellen
Yamada, Esther Michiko
Yamada, Gloria
Yamada, Takako
Catherine
Yamasaki, May
Yamashita, Esther Teruko
Yasui, Beatrice Miyeko
Yasutake, Mary Aiko
Yokomichi, Setsuko
Yokota, Martha Masako
Yokota, Midori Dorothea
Yokota, Toshiko
Yokotobi, Sadako Lorraine
Yoshida, Ethel
Yoshida, Yoshiko Mary
Yoshihara, Tsugumi
Yoshikawa, Isoko
Yoshikawa, Takako
Yoshizumi, Sumiko

EIGHTH GRADE GIRLS

Abe, May
Abe, Setsuko
Baba, Chiyoko
Fujihara, Mary
Fujimoto, Sueme Betty
Fujioka, Kimiko
Fujioka, Rosie
Fujita, Amy
Fukuhara, Sada
Fukushima, Doris
Furushio, Lilly
Hamada, Helen
Hamada, Margaret
Haratani, Mitsuru
Hayano, Kazuo
Hayashi, Lillian
Hayashi, Mitsuko
Hiraga, Louise
Hirata, Fusako
Hishikawa, Yoko
Huga, Betty
Hori, Yumiko
Horio, Marian
Horiuchi, Kimi

Ichiba, Shizu
Ike, Masako
Imagawa, Mary
Ishimura, Miyoko
Ishii, Sally
Ishikawa, Hisako
Ishimoto, Mary
Jumura, Florence
Kagawa, Elko
Kamihara, Emiko
Kanemoto, Amy
Katsumata, June
Kawasaki, Katherine
Komoto, Rosie
Kawata, Yoshiye
Kinoshita, Marie
Kodama, Yuri
Kosai, May
Kosai, Mitsuko
Kumagai, Sumiko
Kusachi, Hazel
Kyono, Sakaye
Maeda, Alice
Makiyama, Sakie
Matsui, Rose

Matsumoto, Marian
Matsumoto, Yukiye
Matsushima, Mary
Mio, Rose
Nakae, Miyo
Nakagawa, Setsuko
Nakamoto, Mizue
Nakamura, Bonnie
Nakamura, Helen
Nakamura, Setsuko
Nakatani, Lily
Narahara, Asako
Nishimoto, Nancy
Nishimura, Arlene
Nishizaki, Alice
Ohara, May
Okamoto, Rae
Okubo, Miyoko
Omura, Anne
Ono, Hanako
Myagishima, Rose
Miyahara, Florence
Miyamoto, Sachiko
Mizusaki, Yoshiko
Morimoto, Masako

Morinaga, Yoshiko
Morisaki, Peggy
Morishige, Natsuko
Osaki, Natsuye
Oseto, Mary
Oshika, Florence
Sakamoto, Michi
Sakashita, Mary
Sako, Mary
Sakuma, Hiroko
Sakumura, Asako
Sasaki, Dorothy
Sato, June
Shibahara, Kazuko
Shibasaki, Kiyoko
Shigaya, Sylvia
Shigeno, Rose
Suguro, Sumie
Takao, Kimi
Takasugi, Akiko
Takayama, Hatsuko
Tamamoto, Mary
Tamiyasu, Haruko
Terashima, Dorothy
Tokunaga, Peggy

Tokunaga, Rose
Tomita, Lillian
Tomita, Ruby
Tsuigawa, Sallie
Tsujioka, Grace
Uchiyama, Beverly
Uchiyama, Frances
Uno, Hiroko
Urushibata, Fumi
Uyeda, Bessie
VanBuskirk, Marie
Wada, Chiyeko
Washizu, Nobuko
Shibahara, Kazuko
Shibasaki, Kiyoko
Shigaya, Sylvia
Shigeno, Rose
Suguro, Sumie
Takao, Kimi
Takasugi, Akiko
Takayama, Hatsuko
Tamamoto, Mary
Tamiyasu, Haruko
Terashima, Dorothy
Tokunaga, Peggy

Aoyama, Martin
Arai, Woody Tadomi
Arima, Lester
Baba, Francis
Cook, Quentin
Frost, Roderic
Fujihara, Henry
Fujii, Frank
Fukuda, Frank
Fukumori, Ray
Hada, Mits
Hamamoto, Hachiro
Hangai, Noboru
Harkness, Tom
Hatamiya, George Shose
Hayashida, Arthur
Hayata, Tom
Hida, Edward
Higuchi, Nobuo
Hirabayashi, Teddy
Yoshiho
Hiraga, William
Hirata, Eichi
Hirata, Minoru
Hisata, Masashi
Hitomi, Hiroshi
Hitomi, Mitsuru
Hoshisaka, Ernest
Ichikawa, Ben
Ikeda, Sam Asamu
Ikeda, Shiki
Ikeda, Tamiya
Ikenoyama, Hideo
Imai, George
Imamura, George
Ishihara, Takashi
Ishizuka, Tadashi Robert

Ito, Frank
Iwamura, Satoru
Izuno, Hiroshi Herbert
Jinguji, Masahara
Kagemoto, Edward
Kai, Frederick Shizuo
Kaibeta, George
Kaihara, Karl Kaz
Kano, John Nobuya
Kase, Chikashi
Kato, Komu
Kawaguchi, Kay Kazuo
Kawano, James
Kawasaki, Frank
Kawasaki, Jimmy
Toshimori
Keikoan, Shoji
Kikuchi, Ben
Kiyokawa, Yoshi
Kobayashi, Robert
Kodani, Kiyoshi
Kondo, Toshi
Kono, Kenji
Kono, Tamio Tommy
Kosai, Masatayoshi
Kosobayashi, Shiro
Koyasako, James
Kozaku, Bobby
Kozumi, Glenn
Kubota, George
Kuge, Chosei Joe
Kumashiro, Howard
Kurozawa, Richard
Kushida, Takeshi
Kawate, Dick
Kyono, Roy

Kyotani, Gentaro
Kawasaki, Koichi
Maeda, Fred Tad
Makishima, Hideo
Mano, George
Masuda, Ken
Matsunami, Donald Teruo
Matsura, Ronald Tokio
Miyake, Richard
Mizuire, Yoshiaki
Morimoto, Paul
Morimoto, Takashi
Morioka, Ken
Morioka, Shigeru Roy
Morita, Haruo Hirokaga
Murakami, Joe
Murata, Jim
Murata, John Tamaru
Nagano, George
Nagao, Shuyo
Nagasawa, Kenji
Nakamoto, Fred Hisashi
Nakamura, Yoshio
Nakanishi, Tetsu
Nakashige, George
Nakashima, James
Nakazato, Dei
Natsuhara, George
Nishiguchi, Mike
Nishimatsu, William
Nishimura, Jimmie
Nishioka, Jim
Nishizaki, Clarence
Hiroshi
Nitta, Clarence

Nitta, Herbert
Nomiyama, Kazuo Frank
Nomura, Roy Haruo
Nomura, Thomas
Norimatsu, Richard
Norisada, Joe Masao
Oda, Fred
Ogata, Joe
Ogata, Masaru
Ogata, Ronald
Ohara, Bobby
Okano, Bill
Ono, Junichi
Osaki, Makoto
Ota, Johnny
Ota, Kaoru
Ota, Yoshio
Otani, Roy
Oto, Dick Kaoru
Ozawa, Dick
Sakata, Shozo
Sakazaki, Michie
Sasaki, Dick Moris
Sasaki, John
Sasaki, Sengow
Sasamoto, Yutaka Albert
Sato, Toshiatsu
Sawada, Akio
Shibata, Ray
Shibata, Toru
Shimada, David
Suhama, Yone
Sumihiko, George
Sumoga, Buster
Takahashi, Thomas
Takahashi, Tommy
Kenneth

Takasugi, Bob Mitsuhiko
Tanabe, Yoshinobu James
Tanaka, Dick
Taniguchi, Harry
Tanihara, Tomio
Tanihara, James Tsugio
Tenma, Shoki
Thayler, Leslie
Tomita, Akira
Tomita, Joe
Toriumi, John
Ueda, Yukio
Urutsu, Tommy
Uyeda, Ben
Uyeda, Yukio
Uyemura, Jimmie
Wakabayashi, Hideo
George
Wasano, Fujio Carl
Washino, Kazuo
Yabuki, George
Yabuki, Joe
Yagi, Edward
Yamada, Teddy
Yamada, William
Yamaguchi, Yasumori
James
Yamamoto, Susumu
Yamamoto, Tommy
Yamasaki, June
Yasuda, Toshinori
Yonemura, Roy
Yoshida, Setsuo
Yoshimura, George
Yoshizuka, William
Yoshizuka, Yoshio
Kenneth

SEVENTH GRADE BOYS

EIGHTH GRADE BOYS

Abe, Kats
Akita, Fred
Akiyama, Homer
Fujii, Lincoln
Fujii, Masatoshi
Fujii, Wesley
Fujimoto, Mitsuo
Fujishin, Ike
Fukui, Jimmy
Fukushima, Kay
Furuta, Kenji
Hada, Letto
Hasegawa, Mark
Hida, Allan
Hirata, George
Honda, Jack
Honda, Yoshio
Hoshiwara, Isao
Ichikawa, Karl
Idehara, Ray
Iida, George
Ikemoto, James
Inouye, Takeharu
Ishihara, Matsuo

Ito, Kaneo
Iwasaki, John
Kamikawa, Joe
Kataoka, Jack Masayuki
Kato, James
Kato, Masayoshi
Kawano, Tom
Kishaba, Albert
Kishi, George
Kishimura, Hiroshi
Kitaura, Tamao
Kono, Takashi
Koyama, Shiz
Koyano, Satoshi
Kubo, Akira
Kumano, Kumio
Kuratoru, Isamu
Manji, Billy
Matsubara, Ray
Matsui, Miki
Matsune, Haruo
Matsuo, Noboru Norman
Matsura, Toshio

Miho, Jim Minoru
Miura, Akio
Miyamoto, Taiji
Miyasaki, Jim
Mizoguchi, Mas
Momii, Noboru
Morinaga, Jimmy
Morishige, Takeshi
Morita, Joe
Morita, Junior
Morita, Robert
Moriya, Toshiharu
Mukai, Jackie
Munekawa, Roy
Nakagawa, Akira
Nakahira, Ben
Nakashima, George
Nakashima, Jack
Nasu, Kenichi
Nishimi, Ralph
Nishimoto, Katsumi
Oda, Henry
Okada, George

Okano, Bob
Okimura, James
Ono, Toshio
Oshima, Hideo
Ota, Jack
Otsuji, Richard
Saito, Fred
Saito, Koichi
Sakaue, Jiro
Sakuma, Ted
Sasaki, Ernest
Sato, Ben
Sato, Eddie
Shikasho, Masami
Shimoyama, Joe
Shinosaki, Bernard
Suhama, Hoshi
Tabara, Tommy
Taira, Junichi
Takemoto, Robert
Tamamoto, Yoshio
Tamura, Akira

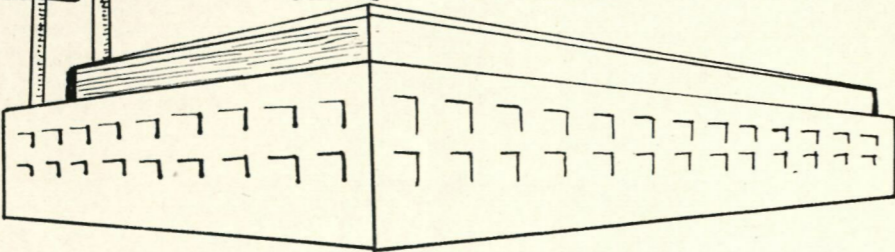
Tamura, Frank
Tanabe, Daichi
Tanabe, James
Tanihara, Johnnie
Tanikawa, James
Takawa, Roy
Takayoshi, Kazuo
Toyota, Tomo
Tsuchida, Sam Minoru
Tsuda, Jack Shizuo
Tsuiji, Tom
Tsujii, Tadao
Uyeda, Jesse
Uyeno, George
Wakamatsu, Fred
Wakamura, Harry
Watanabe, Shinichi
Yamamoto, Ben
Yamamoto, Katsumi
Yamamoto, Noboru
Yamasaki, Masaru
Yoshida, Saburo
Yoshimoto, Willie
Yoshizuka, Richard

Goi, Mitsuo
10th Grade

Oshita, Eiji
11th Grade

Abey, Doris
9th Grade

IT'S
CO-OP
THE

PEOPLE'S

BUSINESS

TULELALE COOPERATIVE ENTERPRISES, INC.
TULELAKE WAR RELOCATION AUTHORITY
NEWELL, CALIFORNIA

GUY W. COOK
NISEI COLLECTION
University of The Pacific

