



1-1-2016

Interactions 2016

Thomas J. Long School of Pharmacy and Health Sciences

Follow this and additional works at: <https://scholarlycommons.pacific.edu/interactions>

Recommended Citation

Thomas J. Long School of Pharmacy and Health Sciences, "Interactions 2016" (2016). *Interactions*. 8.
<https://scholarlycommons.pacific.edu/interactions/8>

This Book is brought to you for free and open access by the Thomas J. Long School of Pharmacy and Health Sciences at Scholarly Commons. It has been accepted for inclusion in Interactions by an authorized administrator of Scholarly Commons. For more information, please contact mgibney@pacific.edu.

THOMAS J. LONG SCHOOL OF
PHARMACY AND HEALTH SCIENCES

INTERACTIONS

2016 MAGAZINE

SCOTTISH RITE CHILDHOOD
LANGUAGE DISORDERS CENTER



A Partnership
Worth Talking About



INTERACTIONS

Published by:
Office of External Relations
Thomas J. Long School of Pharmacy and Health Sciences
University of the Pacific
3601 Pacific Avenue
Stockton, CA 95211
Phone: 209.946.2561
www.pacific.edu/phs

Editor Dua Her '09
Director of External Relations and Professional Development

Editorial Committee Phillip Oppenheimer
Dean
Nancy DeGuire '89
Associate Dean for External Relations
Susan Webster
Director of Development
Anne Marie H. Bergthold
Copywriter
Jen Flora
Donor Relations Coordinator
Becky Perry '01, '09
Alumni Relations Coordinator
Mary Nakamura
External Relations
Ron Espejo
Recruitment and Outreach Manager
Cassandra Birch '15
Administrative Assistant

Photography Randall Gee '09
Jaslyn Gilbert
Dua Her '09

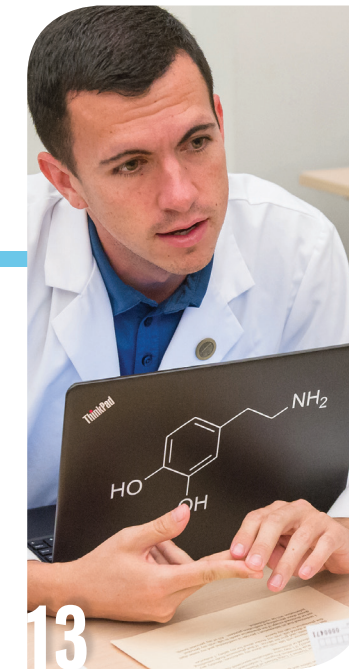
Graphic Design Emspace

Comments, Opinions & Questions Please address correspondence to:
Dua Her
Thomas J. Long School of Pharmacy and Health Sciences
University of the Pacific
3601 Pacific Avenue
Stockton, CA 95211
Phone: 209.946.2989
Email: dher@pacific.edu

FEATURES



10
RESPONDING
TO THE OPIOID
EPIDEMIC



13
MEDICARE PART D
OUTREACH – 100 EVENTS,
10 YEARS, 1 FAMILY



16
BE BRAVE,
TAKE RISKS,
GAIN EXPERIENCE

20
A PARTNERSHIP WORTH
TALKING ABOUT

22
THE IMPACT
OF HEARING LOSS

32
NIH GRANTS
CREATE RESEARCH
OPPORTUNITIES
FOR FACULTY
AND STUDENTS

INSIDE THIS ISSUE

4
DEAN'S
MESSAGE

6
PARTNERSHIPS
MAKE US STRONGER

8
VISION BACKED
BY COMMITMENT

18
WHERE ARE
THEY NOW?

27
CLASS
NOTES

28
ALUMNI OF
THE YEAR

34
FACULTY
SPOTLIGHTS

36
TIGER
STRIPES

42
CALENDAR
OF EVENTS

Dean's Message



Our students, faculty and alumni have a valuable asset — a powerful network. This powerful network includes alumni, preceptors and clinical instructors who help train our students. Our network also encompasses corporate sponsors who provide resources which allow us to offer our students a wonderful Pacific experience and an exceptional education.

The curricula of each of our programs is rooted in experience-based learning. We believe that the apprenticeship model, used for thousands of years, is just as valuable today. We call on current practitioners, many of whom are alumni, to help train the next generation of health care professionals. Over the School's 60-year history, thousands of individuals have volunteered their time so that students may gain valuable hands-on experience. That legacy continues to this day through our dedicated volunteer preceptors and clinical instructors.

Clinical internships are essential to our doctor of physical therapy curriculum. We have more than 350 clinical sites nationwide that help prepare our students to be practice-ready professionals, gain clinical confidence and learn new techniques so that they can provide better patient care. A few of our physical therapy alumni share their memorable internship experiences on page 16.

For nearly two decades, our speech-language pathology program has partnered with the Scottish Rite Foundation. Since the partnership was formed in 1997, we have provided services to thousands of children with significant speech and language disorders. We are grateful for the generosity of the Foundation's members who make it possible for these services to be provided at no cost to the children in our community. Read more about how this partnership has impacted both our students and the community on page 20.

Our audiology program is now in its second year and we were delighted to welcome 26 new students last fall. We have cultivated partnerships with corporations who are in the business of innovative hearing solutions. They are a valuable resource for a profession driven by advances in technology and the exciting applications of that technology. This network provides guidance with curriculum design as well as support for state-of-the-art technology and equipment. One example is our valuable partnership with ReSound, an innovative hearing solutions company specializing in hearing aids and other accessories.

The doctor of pharmacy program also has a wide network of support, including health system providers, community pharmacies,

pharmaceutical organizations and wholesalers. During Pacific's Homecoming, we hosted a special celebration for the 100th Medicare Part D outreach event, which also marked the 10-year anniversary of this program. Nearly 30 alumni and preceptors guided more than 100 students in providing free services to approximately 180 patients. That evening, we welcomed approximately 200 alumni for a Medicare class reunion where they enjoyed a wonderful evening sharing one another's company. It was truly a remarkable event. I am proud of the students who have participated in this program over the past decade and the dedicated faculty who have provided tremendous mentorship. I would like to thank those involved, especially **Rajul A. Patel '01, '06**, PharmD, PhD the creator and the glue that holds the Medicare Part D program together, for bringing such notable distinction to the School.

Another milestone celebrated at Homecoming was the commemoration of the 60th anniversary of the Alpha Psi chapter of Phi Delta Chi. They hosted several programs including a foundation dinner honoring **Ralph L. Saroyan '64**, RPh and a reception to celebrate six decades of brotherhood. Established by **Dean Ivan "Cy" Rowland**, PhD, the School's founding dean, the Alpha Psi chapter has been a significant source of support for its active members, alumni members and the School.

As you read through this issue of *Interactions* you will find many examples of partnerships and how they are making a difference in the community and shaping the future of our professions. I look forward to many more celebrations this year and far into the future.

Sincerely,

Phillip R. Oppenheimer, PharmD
Dean, Thomas J. Long School of Pharmacy and Health Sciences

How can you connect with PaHS students?

- Mentor a student
- Attend events
- Share your knowledge as a guest speaker
- Precept at a health fair
- Volunteer with your alumni association

How to connect with us:

-  www.facebook.com/PacificPaHSAlumni
-  [@PacificPaHSAlum](https://twitter.com/PacificPaHSAlum)
-  pacificpahsalum.org

Dean's Leadership Council

Michael Bailey '74
Kathy Castona-Hoover
Robert Chan '77
Tony Chan '77
Ron Clerico
Perry Cohen '77, '78
Randell "RJ" Correia '81
Michael Coughlin
Rebecca Cupp
Carl Franklin
Royce Friesen '65
Charles Green '68
Clark Gustafson '66
Jeff Jellin '74
Elizabeth Johnson '87
Mike Miller
Michael Pastrick '73
Jeff Ramirez '74
Jon Roth
Michele Snider '75
Papatya Tankut
Robert Vaughan
Ron Wade '78, '81
Stan Weisser
William Yee '83
Richard Yong '92

Physical Therapy Leadership Council

Parley Anderson '03
Virtu Arora
Kevin Hicks
Peter Hohenthanner '01, '04
Kerry Krueger '06
Peter Morelli '74
Brandon Nan '09
Joseph Serra

Entrepreneurial Board of Governors

Robert Bagdasarian '74
Gary Basrai '77
Vincent Cardinale '71
Randell "RJ" Correia '81
Charles Green '68
Clark Gustafson '66
Kenneth Harlan '75
Brian Komoto
William Masotti '66
Mike Miller
Robert Nickell '81
David Neu
Mike Quick
Jeff Sharkey
John Tilley
David Wilcox '79
Douglas Wilcox '74
Scott Workman '81

Industrial Advisory Board

John Barr
Bret Berner
Simon Chin
Gary Cleary
Jeffrey Cleland
John Hearst
Ruhong Jiang
Brian Johnston
Stephen Kirnon
Norm Kobayashi '70
Pasit Phiasivongsa '98, '02
Sanjeev Redkar
Robert Reed
Nirmal Saini
Scott Smith
Bram Surjadinata '94
Guo-Liang Yu
D. Tony Zhang

Partnerships Make Us Stronger



Nancy DeGuire '89, PharmD
Associate Dean for External Relations
209.946.2752
ndeguire@pacific.edu

Time, talent and treasure – we are fortunate that we have these valuable resources. We have the opportunity to invest these resources where they can make an impact now and in the future. At Pacific, we invest in our students to sharpen their skills, increase their knowledge and spark their creativity. We invest in our programs so that we can offer the cutting-edge educational and experiential opportunities the School is known for. In turn, our students are better equipped to contribute to their professions and to help the individuals they serve. Investments allow us to respond to the needs of our students, faculty and alumni. In addition, we invest in the future by creating endowments to provide for future needs that we may not anticipate.

Every day, my staff and I have the privilege of connecting with the School's alumni, parents, donors and friends. These interactions give us a unique vantage point to witness, first-hand, the ways that your support enriches the experiences and education of our students. From a student's first experience putting on their white coat to their first patient care interaction, to their eventual graduation, our students proudly represent their professions and Pacific. Every day we see the difference that your support has made on our campus, across the state and around the globe. **Thank you.**

For over 60 years, **partnerships** have been the foundation of the School's success. Our donors partner with us to bring advancements to our programs and facilities. Each year, our donors support our students by contributing to scholarship funds and endowments. Our students partner with alumni and organizations to give excellent care and education to patients in our communities. Pacific's faculty partner with government agencies and other universities to advance research, bringing new knowledge and answers to important questions facing society.

Partnerships with our family members are woven into the fabric of our School. Without partnerships we would be held back by our own limitations. Partnerships allow us to push beyond expectations and pursue what is next for our own personal and professional growth, as well as what we can contribute to the future of health care. I look forward to seeing what we can accomplish with continued support and new partnerships. Your investments are what make us successful.

Nancy DeGuire '89, PharmD
Associate Dean for External Relations

The Impact of Annual Giving

\$100

Covers a student's membership in a national professional organization.

Sponsors two students to attend the annual Pharmacy Etiquette Dinner networking event.

Provides a White Coat for one professional student.



\$250-\$500

Provides students with travel funds for networking and research opportunities.

Sponsors a student to attend a state professional association conference in California.



\$1,000-\$2,500

Supports research and presentation costs for students participating in state or national meetings.

Provides materials necessary for community health care outreach programs hosted by student groups.

Sponsors the Speech-Language Pathology clinical roundtable sessions at the annual Welcome Back Dinner.

Purchases new technology for patient care outreach.



\$5,000

Awards scholarships based on need and academic excellence.

Sponsors one orange polo shirt for each incoming doctor of pharmacy student.

Supports the purchase of lab equipment utilized by faculty and students for research.

Supports student and alumni mentorship opportunities.

Provides training programs for student leadership and professional development.



Through annual giving, you can make an impact. There are several ways to give a tax-deductible gift.



Online

To make a secure gift online, visit bit.ly/givetopahs



By Mail

To mail a pledge payment or donation, please use the envelope included in this magazine.



Over the Phone

To give by phone, please contact Jen Flora at 209.946.2303.



Planning Your Legacy with Pacific

Is the Thomas J. Long School of Pharmacy and Health Sciences in your Estate Plans?

Build a lasting legacy with a planned gift to the School. With a gift in your will or trust, you can support student scholarships, academic and experiential programs, facility improvements and groundbreaking research for generations to come. Support the next generation of health care professionals while supporting the things you are passionate about.

Schedule your confidential discussion today. Have you already included us in your estate plans? We want to hear from you!

Nancy DeGuire

Associate Dean for External Relations
209.946.2752 or ndeguire@pacific.edu

Visit the Pacific Estate and Planned Giving website at www.pacificpahs.planmygift.org

Vision Backed by Commitment



Susan Webster
Director of Development
209.946.3116
swebster@pacific.edu

When people ask me why I love my job, my answer is quite simple — I love working with students, alumni and donors. In my newly expanded role as Director of Development, I have the pleasure of connecting with pharmacy and health sciences students. Filled with anticipation and excitement, they share with me the unique ways they plan to utilize their degree to serve their community and contribute to advances in patient care. I also have the privilege of working with alumni and donors. Their generosity supports students as they work to make their dreams become a reality.

The beauty of working with students is being able to witness their dedication to their studies, to the profession and to one another. Their hopefulness is infectious! A great example is the doctor of physical therapy (DPT) class of 2016, which initiated the Physical Therapy Visionary Endowment. This fund will help send future DPT students to local and national conferences. Their vision for supporting students in the classes that will follow them is an inspiration.

Abby Sheats '16, DPT, shares, “Improving the education of future DPT students will benefit the physical therapy profession as a whole and we will see better prepared new graduates representing University of the Pacific.”

Many alumni share Dr. Sheats’ commitment to shaping future generations of health care professionals through the investment of time, talent and treasure. Bob and Jeannette Powell also had a vision for supporting students at University of the Pacific. Their historic gift to the University established the Powell Match program, which matches, dollar for dollar, new endowment gifts of \$50,000 or more. Through the Powell Match program you have the incredible opportunity to double your impact.

I hope you will join me in improving students’ access to an unrivaled Pacific education by supporting one of our existing endowments or creating your own philanthropic legacy.

Susan E. Webster
Director of Development

The Power of the Powell Match

The Powell Match program was established by an extraordinary gift of \$125 million to University of the Pacific from Robert and Jeannette Powell. A full \$85 million of the Powell’s gift is dedicated to matching, dollar for dollar, new endowment gifts of \$50,000 or more that support scholarships or enhance the academic experience for our students.

The Powell Match is doing great things for the Thomas J. Long School of Pharmacy and Health Sciences! Take a look at the endowments that will receive the 1:1 match.

Pharmacy

Richard and Marilynn Balch Endowed Scholarship

Established by former faculty member **Marilynn (Dittbrenner) Balch '77** and her husband, Richard, to support students attending pharmacy school, particularly those who are raising children.

Chan Family Endowed Scholarship Fund

Tony Chan '77, PharmD, and **Virginia (Chang) Chan '77**, PharmD, along with their children **Jonathan Chan '09**, PharmD, and **Megan Chan '13**, PharmD, created this scholarship fund to assist students pursuing a career in pharmacy.

Chan Family Office of Academic Success and Instructional Support (OASIS)

This fund assists students with academic support through OASIS, which facilitates tutoring and helps students develop personal learning strategies, as well as time and stress management skills.

Madhukar Chaubal Pharmaceutics and Medicinal Chemistry Graduate Student Fund

Established in honor of professor emeritus **Madhukar Chaubal**, PhD, this fund supports pharmaceutics and medicinal chemistry graduate students who plan to present their work at state, national or international meetings.

Clark and Pamela Gustafson Endowed Scholarship

Clark Gustafson '66, RPh, and **Pamela (Reynolds) Gustafson '67** created this endowed scholarship to encourage students to pursue a pharmacy education.

Hovagimyan Family Endowed Scholarship

Garen Hovagimyan '09, PharmD, created this endowed scholarship to give financial support to first and second-year pharmacy students in order to decrease their future debt and assist them with pursuing professional opportunities.

Lunagaria Entrepreneurial Pharmacy Practice Program Endowment

This fund supports faculty, learning opportunities for students and symposia. It also assists with travel expenses for students attending conferences focused on innovation and entrepreneurship.

Morisoli Family Endowed Scholarship for Pharmacy

Stanley “Jim” Morisoli '75, RPh, and his wife, Deborah, established this endowed scholarship in order to provide pharmacy students with tuition assistance.

The Powell Match is a once-in-a-lifetime opportunity to create your own philanthropic legacy, while doubling the value of your gift. Every contribution helps our students succeed. To give online, go to bit.ly/givetopahs

In addition to the endowed Powell-matched funds, the School has a number of other scholarships. To contribute to the legacy of a fellow alumnus or beloved mentor, or to find a fund that mirrors your passions, contact Susan Webster at 209.946.3116 or swebster@pacific.edu

Donald Y. Shirachi Endowed Scholarship

Funded by Frank and Joyce Roscoe to honor professor emeritus **Donald Y. Shirachi '60**, PhD, this scholarship supports the academic and research endeavors of pharmacy students.

Physical Therapy

Chan Family Endowment for Physical Therapy

The Chan family established this fund to provide tuition assistance for physical therapy students.

Physical Therapy Visionary Endowment

The doctor of physical therapy class of 2016 initiated an endowment to assist students attending the annual American Physical Therapy Association Combined Sections Meeting with travel and conference expenses.

Audiology

A. Stephenson/Parker Diversity in Audiology Endowed Scholarship

Created with the vision of helping to promote diversity in the field of audiology, this scholarship provides tuition assistance for doctor of audiology students.

Speech-Language Pathology

Chan Family Endowment for Speech-Language Pathology

Established by the Chan family, this endowment provides tuition assistance for speech-language pathology students.

Susan Edelman Hanson Endowed Memorial Scholarship

This scholarship was established by **Neil Hanson '63**, RPh, in memory of his wife, **Susan (Edelman) Hanson '63**, who had a passion for speech-language pathology.

Carmen Rodriguez Mardany Endowed Scholarship

Established by Craig Mardany and **Carmen (Rodriguez) Mardany '85**, in support of her alma mater, this endowed scholarship supports speech-language pathology students.

Responding to the Opioid Epidemic

By Anne Marie H. Bergthold

From the Perspective of a Pharmaceutical Scientist

In May 2016, the Food and Drug Administration (FDA) announced it had approved Probuphine, the first implantable drug to deliver long-lasting medication to treat opioid dependency. “I invented it; I initially came up with the idea,” said **Rajesh “Raj” Patel ’87**, PhD, vice president of manufacturing and process development at Titan Pharmaceuticals, based in South San Francisco. Speaking with pride and gratitude, Dr. Patel shares that he had the opportunity to be involved in the complete development cycle.

“There are very few people who get the opportunity to take their patents to the market,” Dr. Patel said. “I was lucky enough to work on my patent all the way from the beginning up to production. I worked with different teams on pre-clinical studies, clinical studies, regulatory filings and the approval process. I was also involved in setting up the manufacturing.”

Recipients of Probuphine will have four matchstick-sized rods containing the drug inserted into their upper arm. The rods

are removed after the six-month treatment period. If required, additional implants are administered for another six months. At this time, in order to determine the correct dosage for the individual, patients start the course of treatment in tablet form. Dr. Patel asserts that implantable drugs are changing the treatment paradigm. There are several clear advantages to having this drug available in implantable form, including that the drug cannot be resold illegally or accidentally ingested. Additionally, by making the drug implantable, patients cannot intentionally or unintentionally deviate from the treatment plan for six months. “We anticipate it will reduce the relapse rate,” Dr. Patel said. “The FDA believes it is going to help patients get control of their lives. They don’t have to make a daily decision. They know that they are committed to the treatment plan.”

Dr. Patel strongly urges health care providers and pharmacists to discuss the risks of taking an opioid with their patients. “People need to start understanding that this is an epidemic,” Dr. Patel said. “Without everyone’s help and support we can’t

get this epidemic under control.” He believes that health care providers should emphasize that these pain killers should only be used sparingly. His advice is to tell patients to only take this medication when they really need it.

While a student at Pacific, Dr. Patel was a graduate assistant to **Ravindra Vasavada**, PhD, professor emeritus of pharmaceuticals. Dr. Patel explains that Dr. Vasavada challenged his graduate students to pursue research that they were passionate about and to think outside the box. “He encouraged students to go out and find a project that they were interested in,” Dr. Patel said. It was this mindset of challenging the status quo when approaching the development of pharmaceuticals that set Dr. Patel on the path to developing Probuphine. Dr. Patel started working on the development of an implantable drug to combat opioid dependency in 1998. At that time, a drug to treat opioid dependency in tablet form had been approved in Europe, but was not available in the United States until 2003 when a similar drug was approved by the FDA. Without Dr. Patel’s forward thinking and innovative approach to research, which was fostered at Pacific, Probuphine would not be available today.

Dr. Vasavada congratulated his former student. “You have made a magnificent and timely invention,” Dr. Vasavada said. “The enormity and scope of this achievement will sink in only gradually. As you already know, opioid addiction has reached epidemic proportions. Your invention will provide a meaningful option for the first time to those patients and an incalculable benefit to society as a whole. I am so happy your hard work and patience have paid off.”

From the Perspective of a Pharmacist Attorney

The dramatic increase in opioid dependency has captured the attention of both health care professionals and lawmakers. “Efforts by lawmakers come down to decreasing the supply side and decreasing access to opioids in general,” said **Tony J. Park ’96**, PharmD, JD. As of July 1, 2016, it is mandatory for all health care practitioners to register for access to the Controlled Substance Utilization Review and Evaluation System (CURES 2.0), California’s Prescription Drug Monitoring Program, which is overseen by the California Department of Justice. He believes that adherence to the legislation concerning the utilization of CURES will result in a dramatic decrease in the number of controlled substances that are dispensed in California.

Although pharmacists are not mandated by statute or regulation to review a patient’s CURES report before dispensing a prescription, there are strong incentives for pharmacists to do so. According to Dr. Park, the California State Board

By the Numbers

In “Current State of Opioid Therapy and Abuse,” Laxmaiah Manchikanti, MD, **Adam M. Kaye ’95**, PharmD, FASCP, FCPhA and Alan D. Kaye, MD, PhD, DABA, DABPM, DABIPP, share the sobering statistics which underscore the prevalence of opioid abuse in the United States.

4,680%

Increase of opioid misuse between 1996 and 2011

80%

Up to 80 percent of heroin users first took prescription opioids

28,647

Number of deaths involving opioids in 2014 (triple the number in 2000) and representing 61 percent of all drug overdose deaths

\$86 billion

Estimated total cost of prescription opioid abuse in the United States including workplace, health care and criminal justice expenditures

90%

More than 90 percent of patients who survive a prescription opioid overdose continue to be prescribed opioids, usually by the same prescriber

Red Flags of Opioid Abuse

Tony J. Park ’96, PharmD, JD strongly recommends that pharmacists review the guidelines outlined in the case summary of Board of Pharmacy Case No. 3802 “In the Matter of the Accusation Against Pacifica Pharmacy; Thang Tran” for practical advice on how they can identify patients who have become dependent on opioids. Red flags may include:

- Irregularities on the face of the prescription
- Nervous patient demeanor
- Age or presentation of patient (e.g., youthful patients seeking chronic pain medications)
- Cash payments
- Requests for early refills of prescription
- Prescriptions written for an unusually large quantity of drugs
- Prescriptions written for potentially duplicative drugs
- Initial prescriptions written for stronger opiates (e.g., OxyContin 80mg)
- Long distances traveled from the patient’s home to the prescriber’s office or pharmacy
- Prescriptions that are written outside of the prescriber’s medical specialty
- Prescriptions for medications with no logical connection to diagnosis or treatment

of Pharmacy set legal precedent in 2013¹ that now requires pharmacists to conduct a reasonable inquiry in the presence of certain red flag indicators suggesting that a controlled substance prescription may not have been ordered pursuant to a legitimate medical purpose. Checking CURES is one such measure. Dr. Park explains that failure to conduct a reasonable inquiry could result in the pharmacist violating their corresponding responsibility before dispensing a controlled substance, as well as an agency determination of unprofessional conduct, and even civil tort negligence. "I believe reviewing CURES data has now become a standard of practice," Dr. Park said. He believes the Board views CURES as a crucial component of due diligence that should be standard operating procedure before dispensing any controlled substances.

Pharmacists can also utilize CURES to protect their licenses. It can be used as a record to corroborate that they met their corresponding responsibility and performed the requisite reasonable inquiry before dispensing a controlled substance. For example, a pharmacist can attach a printed record of a patient's CURES report to the dispensing record to show that they performed a reasonable inquiry in the presence of certain red flags and that their decision to dispense the controlled substance was based upon the contents of the CURES report available at the time of dispensing².

Dr. Park emphasizes that the only way to turn the tide of the opioid epidemic is through interdisciplinary collaboration. Lawmakers, patients, pharmacists and other health care

professionals must all work together. He notes that while lawmakers can take steps to limit the availability of prescription opioids, it is critical that health care professionals redefine the way Americans think about prescription opioids.

1. www.pharmacy.ca.gov/enforcement/precedential
2. According to Dr. Park, there is a lag time between any given controlled substance dispensing activity and its appearance on CURES, which can vary from a few days to a few weeks.

Have you been prescribed an opioid?

Recommendations from a Pharmacist

"Discuss in detail the risks and benefits with your provider before starting opioids. If you both decide on the need to use opioids, make sure to learn thoroughly when and how to use them, when not to use them and reasons why you should use them as sparingly as possible. In many cases, using the lowest effective dose for the shortest amount of time is a good rule to keep in mind."

- Kristen Tokunaga '15, PharmD, clinical pharmacist

From the Perspective of a Health Care Provider

"Opioids have a high potential for unwanted, dangerous and sometimes lethal effects," said **Kristen Tokunaga '15**, PharmD, clinical pharmacist at Health Plan of San Joaquin (HPSJ). In 2016, HPSJ received a \$50,000 California Health Care Foundation planning grant to help meet the challenges of the nationwide opioid dependency epidemic.

HPSJ collaborates with community partners who have already taken steps toward addressing this issue. "San Joaquin General Hospital and Community Medical Centers have each created their own pain task forces, which aim to improve pain management across their primary care, urgent care and emergency room settings," Dr. Tokunaga said. "Additionally, each provider organization has formed clinics with interdisciplinary teams of licensed clinical social workers, nurses and substance use disorder counselors to work closely with patients. We agree that a unified front is the best approach to fighting this epidemic.

Improved coordination of standardized care following best practices will prevent inappropriate 'doctor shopping' and minimize access to unsafe doses of opioids."

To help curb this growing epidemic, pharmacists and other health care providers must educate themselves on ways they can identify, respond to and prevent opioid dependency. "We are now actively promoting clinician education on safe prescribing practices, including discouraging initiation of chronic high-dose opioids, encouraging regular use of drug monitoring tools such as Controlled Substance Utilization Review and Evaluation System and providing training for medication-assisted treatment for addiction, as well as overdose management," Dr. Tokunaga said. She believes that pharmacists have a responsibility to ensure that patients are well-informed. "We must take the extra time to counsel our patients on the potential risks," she said. "No matter where you are in your education or career, it is never too early or too late to learn about how you can help with the opioid crisis. It will literally take a village to end this epidemic. Both health care providers and community providers have a role and responsibility to contribute." 🐾



Medicare Part D Outreach

100 Events 10 Years 1 Family

By Anne Marie H. Bergthold

The Medicare Part D Mobile Outreach Clinics hosted their 100th event during Pacific's 2016 Homecoming. That evening nearly 200 Pacific alumni who have been involved in the program celebrated this momentous milestone at a reunion marking the program's 10-year anniversary. **Rajul A. Patel '01, '06**, PharmD, PhD, professor of pharmacy practice, is the visionary behind the Medicare Part D Mobile Outreach Clinics. Over the past decade **Joseph Woelfel '70, '72, '78**, BS, MS, PhD, RPh, FASCP, associate professor of pharmacy practice, has been instrumental in helping Dr. Patel develop the program and train students.



Students, alumni, faculty and preceptors gathered for a 10-year reunion during Pacific Homecoming 2016.



Dr. Patel presents Dr. Woelfel with a gift from the Medicare Part D alumni and students.



Congressman Jerry McNerney presents Dr. Patel with a special certificate in recognition of the 100th Medicare Part D health fair.

Dr. Patel explained what inspired him to develop an outreach program to serve Medicare beneficiaries. “It was shortly after Part D came into effect and we could see that there were big issues,” Dr. Patel said. “There were a lot of plans offered; there were close to 60 plans offered the first year. We knew the plans had different formularies and different cost structures.” He believed that pharmacy students could help beneficiaries by assisting them with selecting the plan that worked best for them, which in turn could minimize their out-of-pocket expenses. To date the program has saved beneficiaries a staggering total of \$4,603,266 on their drug costs – an average of \$1,011 per beneficiary.

There is an ongoing need for this outreach program as every year plan offerings change, which can affect the list of drugs a plan covers and their cost. At the clinics, beneficiaries also receive the invaluable and potentially life-saving service of having trained student pharmacists, under the supervision of licensed pharmacists, conduct a full review of all of their medications to ensure they are safe to take together. In addition, each clinic offers an array of health screenings and services administered by students who are overseen by licensed pharmacists volunteering their time. The services offered include blood pressure testing, anemia testing and a falls risk assessment. Patients can also receive free screenings for cholesterol, diabetes, memory

decline, depression, sleep disorders, anxiety, asthma and chronic obstructive pulmonary disease. In addition to these services, students also administer vaccinations. **Carly Ranson '13**, PharmD, Fellow at the Thomas J. Long School of Pharmacy and Health Sciences, said that a day spent working at one of the Medicare outreach events is intense, but she loves it.

The mobile aspect of the clinics has been a key component of the program’s success. “We quickly realized that this is not the ‘field of dreams.’ If we build it they won’t come,” Dr. Patel said. “We have to take the show on the road.” The program’s aim is to provide services to patients directly in their communities. Special efforts are made to have a series of clinics which focus on patients in underserved and underrepresented communities, many of whom have limited access to transportation. “A lot of this population won’t go

“This class is a brilliant platform for making long-standing professional relationships, promoting the important work that students and faculty can accomplish together, helping hundreds of worthy seniors, sharing valuable outcomes, conducting research and showcasing the genius of Dr. Patel.”

– **Sian Carr-Lopez '85**, PharmD

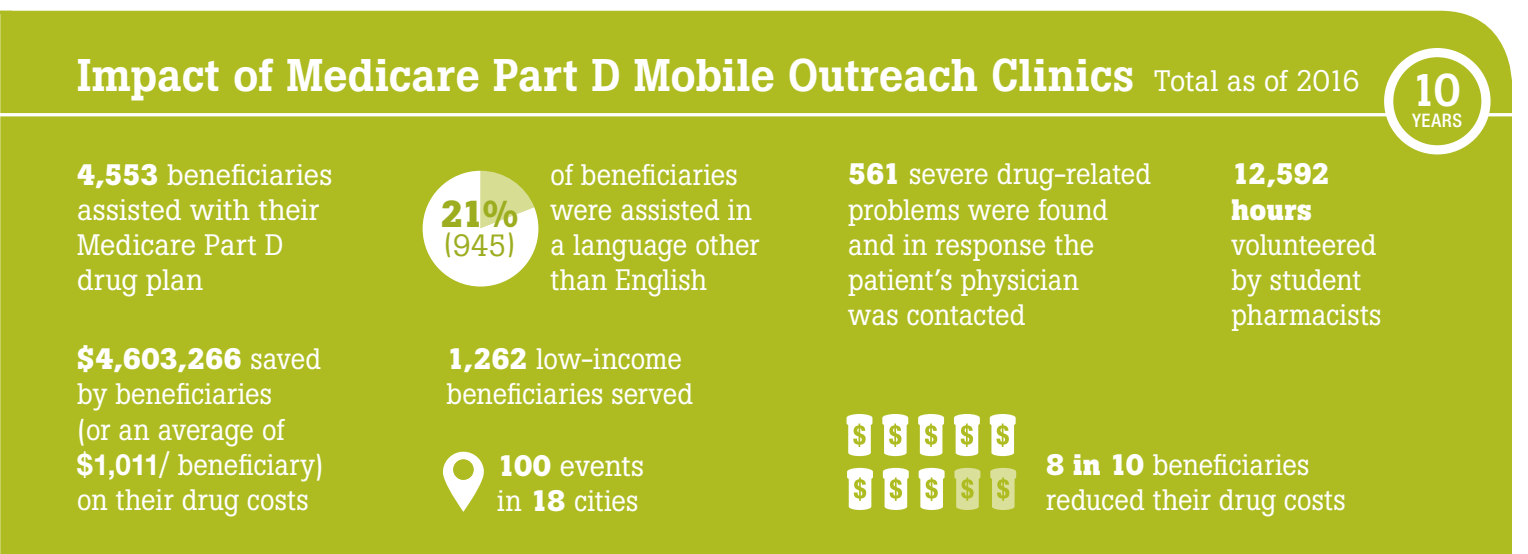
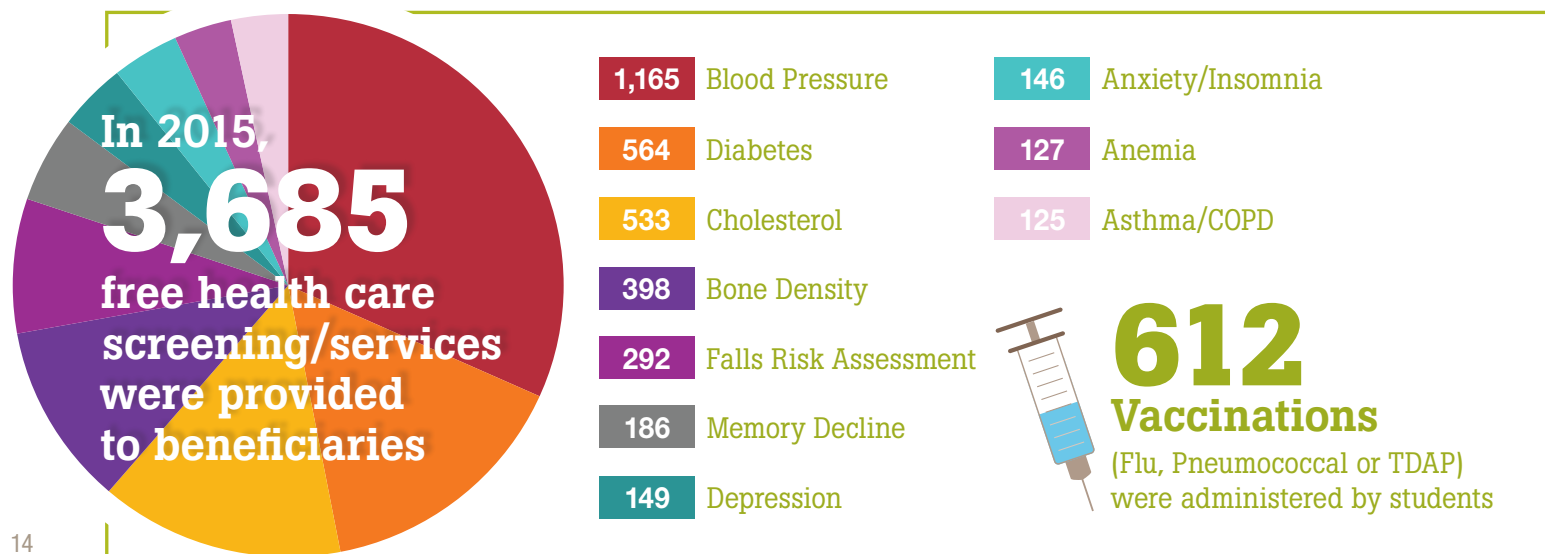
[to see a physician] unless they really need to or unless they are told to,” Dr. Ranson said. “Even if we only give them vaccines, that is something they wouldn’t have received otherwise.”

Stockton resident Betty Escher has benefited personally from these services. “I’ve been coming for about eight years,” Escher said. “I like them to keep track of my medications and find the best plan for me. They have all been wonderful and helpful. They explain everything so that I can understand it. It’s a wonderful program for the community.”

The patients are not the only ones who benefit from this program. “The students utilize the skills they learn in the classroom and apply them in a real world setting,” Dr. Patel said. Speaking of her experience as a student, Dr. Ranson shared, “At the core it shows you what you are capable of, it gives you a lot of confidence.” She has observed that Pacific students who have been involved in the Medicare Part D clinics stand apart from other pharmacy students. “They are more well-rounded, more sure of themselves and they know where to find the answer if they don’t know the answer,” she said. She believes the Medicare Part D clinics have impacted how she approaches her profession. “It has made me a different practitioner: more empathetic, more curious and more proud. We can do a lot; we just have to know where to go and have the guts to try.”

Dr. Ranson shared that the students, faculty and volunteers are one family. Dr. Patel emphasizes that the outreach program is a collaborative effort. “It is not one person or one group that makes this happen,” Dr. Patel said. “We have been fortunate to have incredible governmental partners including the Centers for Medicare & Medicaid Services, the California Department of Aging, the California Department of Public Health, San Joaquin County Public Health Services and the Health Insurance Counseling & Advocacy Program. In addition, we have been fortunate enough to receive several external grants over the years that have provided funding for the program, including multiple grants from United Way and Kaiser Permanente. Also, none of what we are able to do would be possible without the nearly 120 pharmacists who volunteer their time and efforts each year to precept our students at the Medicare events. I am thankful for all involved who make our program possible.”

Dr. Patel is overwhelmed by the gratitude that the patients express. “Their appreciation – that’s what keeps me going and makes it all worthwhile,” Dr. Patel said. To learn more about these services, or to volunteer, please visit go.pacific.edu/medicare or call 209.910.3784. 🐾





Pacific professor of physical therapy Tamara L. Phelan '08, PT, EdD, FAAOMPT demonstrates the use of diagnostic ultrasound imaging.

Be Brave, Take Risks, Gain Experience Doctor of Physical Therapy Clinical Internships

By Anne Marie H. Bergthold

“Be brave. Take risks. Nothing can substitute experience,” said acclaimed Brazilian author Paulo Coelho. Pacific’s doctor of physical therapy (DPT) students have the opportunity to be brave, take risks and gain experience through clinical internships.

“After completing all of their DPT coursework on campus, students are mentored off-campus by clinical faculty, who are licensed physical therapists, for six months in full-time clinical internships,” said **Casey Nesbit**, PT, DPT, DSc, PCS, assistant professor of physical therapy and director of clinical education. During the six months, students have the opportunity to experience clinical rotations in three different practice settings. “They are required to do one rotation in the acute care setting, one rotation in the outpatient setting and a third rotation in a setting of their preference,” Dr. Nesbit said.

Pacific alumni **Adam Matichak '15**, DPT, **Alysia Guerin '16**, DPT, and **Patrick Cawneen '16**, DPT, reflect on how Pacific prepared them for their clinical rotations and share their memorable internship experiences.



Patrick Cawneen '16, DPT
Internship Site: Barnes Jewish Medical Center
Location: St. Louis, Missouri

His Pacific Experience:

“I felt very prepared because the faculty specialized in all fields ranging from cardiovascular/pulmonary to neurological rehabilitation to pediatrics and more, which allowed them to share experiences and knowledge with us students.”

His Internship Experience:

“The most challenging aspect of the internship was interacting with individuals of all different levels and backgrounds. Within a small time frame I could be interacting with a patient, a resident physician, an intern physician, a nurse, other therapists and family members who all require different needs and types of communication. Balancing all of these things and learning to respond as timely and accurately as I could was a challenge.”

“The most rewarding aspect of the internship was seeing the patient’s progress. [...] The patients that I worked with multiple times looked forward to seeing me enter the room so they could show me how much they had improved.”

“A memory that stands out to me was during my last week when the therapists of the rehab team, along with many nurses on the floors I worked on, were telling me how they were hoping for more students from Pacific to do internships there because our time spent together was so enjoyable.”



Alysia Guerin '16, DPT
Internship Site: Neuroworx
Location: Sandy, Utah

Her Pacific Experience:

“Through our various courses, clinical scenario examples and hands-on practice, Pacific prepared us for anything. Our amazing professors, who are also practicing clinicians, were able to pull from their experiences to provide a real life example for the topic we were discussing that day.”

Her Internship Experience:

“Every patient I met was highly motivated and taught me something new each and every session I had with them. The staff was extremely knowledgeable and I cannot thank them enough for how much I learned from them. Also, I had the opportunity to work with state-of-the-art equipment that is only in a few other places in the country, as well as the opportunity to utilize their pool for aquatic therapy treatments.”

“One of my favorite moments at Neuroworx was assisting a patient with a spinal cord injury to find a way that he could independently get in and out of bed. The look on his face when he was able to do it independently for the first time was just priceless. What it meant to him was he could eventually rely less on others for help and go back to college to live in the dorms. Ultimately, the biggest reward is to have a patient thank you for all you’ve done for them in improving their quality of life. It is such a great feeling as a physical therapist and it is why I wanted to become one in the first place.”



Adam Matichak '15, DPT
Internship Site: Stanford Health Care
Location: Palo Alto, California

His Pacific Experience:

“I feel the diversity in the faculty at Pacific helped to shape me as a physical therapist. Everyone has the same foundation of knowledge, but each professor was able to apply this knowledge base to their individual specialties, whether it was **Dr. Todd Davenport’s** orthopedic knowledge or **Dr. Cathy Peterson’s** neuro background or **Dr. Carl Fairburn’s** [’10], cardiopulmonary experiences. The faculty at Pacific represent a wide range of specialties and each have a profound level of expertise.”

His Internship Experience:

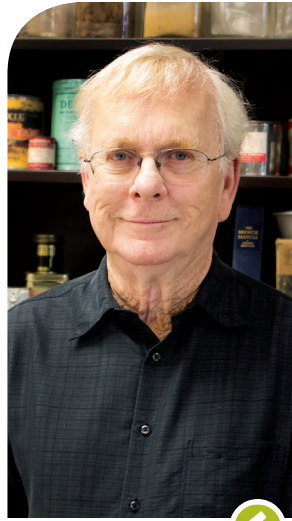
“The most rewarding part of the internship was being at Stanford for the annual blood and marrow transplant reunion and seeing patients that had been through the transplant process who had not only resumed their normal lives, but were thriving and concern-free!”

“I had the opportunity to spend a few hours in the operating room with one of the orthopedic surgeons. The procedure was a total knee replacement revision. The surgeon took the time to walk me through the procedure, from showing me the imaging that was done prior to looking at the new hardware, as well as putting me in the best position to see what was going on and talking to me as he was performing different aspects of the surgery. In June 2016, I landed my dream job rejoining the inpatient oncology team at Stanford.” 🐾

Where Are They Now?

Former faculty reflect on their time at Pacific and share their latest adventures

By Anne Marie H. Bergthold



James W. Blankenship, PhD



Edward "Ed" Tempel '50, '62, MA



Bradley "Brad" Stockert, PT, PhD

JAMES W. BLANKENSHIP, PHD

When **James W. Blankenship**, PhD, professor emeritus of physiology and pharmacology, reflects on his time at Pacific, the memories that stand out to him are those involving students. "The students were always serious and interested in learning," said Dr. Blankenship. "I never thought there was any need to inspire students. They were already inspired when they got here. [The faculty] only needed to provide them with direction. I enjoyed that very much." Dr. Blankenship believes that many of his former students will remember his verbal quizzes, which the students playfully referred to as interrogations. One group of students presented him with a plastic axe that had "wrong" written on one side and "almost" on the other side, to use as a prop during these exams.

Dr. Blankenship explains that one of the most profound differences in pharmacology, compared to when he first entered the field, is that today most drugs are genetically engineered. "Almost all of the drugs I first started with came from plants or animals," Dr. Blankenship said. He believes that genetically engineering drugs has inherent advantages and disadvantages. While it can increase the effectiveness of drugs, the drugs are often much more expensive to manufacture.

Dr. Blankenship is proud to think of the role he played in the professional development of his students, many of whom are currently practicing pharmacists. "When I go into a pharmacy anywhere in California, I'll walk by and see if I recognize anyone," Dr. Blankenship said. His advice for those considering a career in pharmacy is to be aware that it is a

dynamic profession that is continually evolving. "I think that you need to realize that it is going to change and you need to be prepared for that change," Dr. Blankenship said.

A teacher to his core, Dr. Blankenship volunteers with Teaching Opportunities for Partners of Science, which is organized by the San Joaquin County Office of Education. Once a week he goes to New Hope Elementary School District, a small kindergarten through eighth grade school located in Thornton, a small town north of Lodi. "Every Tuesday I go out there with a bunch of science things," Dr. Blankenship said. He shared that he recently recently did a presentation on bats.

Dr. Blankenship and his family have lived in the same house since 1977, when they first moved to Stockton. He still keeps in touch with a number of his former colleagues, including professor emeritus **David Fries**, PhD, his golf buddy. He also plays the euphonium in a community band and has friends who are involved with Pacific's Conservatory of Music.

"Any time I get a chance to go on campus it's wonderful," Dr. Blankenship expressed. He and his wife regularly attend Pacific basketball and volleyball games. "Pacific is a community, I feel privileged to have a lot of good friends from a lot of different parts of the campus," he added. 🐾

"I never thought there was any need to inspire students. They were already inspired when they got here."

EDWARD "ED" TEMPEL '50, '62, MA

An interest in education and communication prompted **Edward "Ed" Tempel '50, '62, MA**, known by his students as Father Speech, to pursue a career in speech-language pathology (SLP). Professor Tempel attended Pacific, earning a bachelor of arts and a master of arts from what is now known as the Department of Speech-Language Pathology and Audiology. Professor Tempel has witnessed dramatic changes in the profession, but he believes that, at its heart, SLP has remained unchanged. "The goals are the same, but the method of obtaining those goals is refined with the advent of the electronic tools now present," said Professor Tempel.

Harriet Doyle '73, MA, was a colleague of Professor Tempel's at Lodi Unified School District. "First of all, Ed is very caring and he always would put the client first," Doyle said. "He always emphasized that you don't just pick up a manual for therapy, you must form a relationship with the client."

In his frank and direct manner, Professor Tempel shared his advice for those considering a career in SLP. "Realize the career you are embarking on is not rocket science. You must like the people you are trying to help and you must be ready to adjust your methods in providing that help." Oscar Wilde once said, "Life is too important to be taken seriously." Professor Tempel believes speech-language pathology is too important to be taken seriously.

Professor Tempel is a member of the Omega Phi Alpha chapter of Delta Upsilon. Since 1943, members of Omega Phi Alpha have organized the Murphys Ale and Quail Club. "We live in the foothills near the town of Murphys, where Murphys Ale and Quail meets annually," Professor Tempel shared. "The peace and quiet is great! I play an occasional round of golf and take a trip now and then. I also do some wood and soapstone carving."

"A trip down out of the mountains to Stockton brings fond memories of Pacific," Professor Tempel said. Of the countless memories of his time at Pacific as a student, and later a faculty member, getting married in his senior year stands out to him.

His wife, Dorothy (Pollard) Tempel '50, also attended Pacific, earning a bachelor of arts in sociology. "She is the perfect partner for Ed," Doyle shares. "She laughs at his jokes and rolls her eyes when he says something that is kind of out there. When you think of things that come in pairs there is salt and pepper, shoes and socks, Ed and Dorothy." 🐾

"The goals are the same, but the method of obtaining those goals is refined with the advent of the electronic tools now present."

BRADLEY "BRAD" STOCKERT, PT, PHD

In his office at California State University, Sacramento, **Bradley "Brad" Stockert, PT, PhD**, has reminders of his time as a Pacific faculty member. "I still have pictures of graduating classes in my office, on my shelves and on my wall," said Dr. Stockert. Amongst the photos is a handmade plaque featuring a dimmer switch. One of Dr. Stockert's favorite analogies is to compare physiology to a dimmer switch. He explains that physiological functions do not get turned on or off like a light switch, instead they are like a dimmer switch, either dialed up or dialed down. He shares that he used this analogy so often while at Pacific that at the end of one semester, his students presented him with a commemorative dimmer switch. "I still have that on my shelf and I still use the analogy," he said.

Dr. Stockert was teaching anatomy and physiology courses at a community college when he decided to seek out a new way to challenge himself. Around that time, he was introduced to a physical therapist. "That did it for me, seeing what they actually do," Dr. Stockert said. He reflects on how the discipline has changed. "The push for evidence-based practice and the amount of information available has exploded over the course of my career." His current research focuses on the use of simulation labs to train doctor of physical therapy (DPT) students. Simulation labs, such as the one used in Pacific's DPT program, are designed to replicate the environment of an acute care or intensive care unit.

Dr. Stockert shares his advice to future physical therapists. "There are a lot of different ways to practice physical therapy; be very open-minded when you go into the field," he said. He also strongly encourages students to be actively involved in professional organizations. "The organizations advance issues on governmental affairs and insurance that I'm not capable of doing on my own. With so many members to draw on, they are able to give a much more comprehensive approach to our future."

Dr. Stockert is an avid skier; he has fond memories of Pacific faculty and student ski trips. He also practices martial arts and has earned a third-degree black belt in karate. Whenever Dr. Stockert attends a graduation ceremony, regardless of the location, it reminds him of attending commencement at Pacific. Knowing that he had a role in the professional development of his students gives him a sense of pride and accomplishment. "I feel so lucky to have had a part in their lives," Dr. Stockert said. 🐾

"There are a lot of different ways to practice physical therapy; be very open-minded when you go into the field."



A Partnership Worth Talking About

Scottish Rite and University of the Pacific

By Anne Marie H. Bergthold

Reflect on the number of interactions you have throughout the course of one day. Now picture the impact a communication disorder would have on each one of those conversations. Imagine the frustration you would feel throughout the day as you try to convey your thoughts and feelings to friends, family and colleagues. For many individuals with a speech or language disorder this is the reality of daily life.

Since 1997, Pacific's Department of Speech-Language Pathology and Audiology has partnered with the California Scottish Rite Foundation to serve children with communication impairments and disorders at the Stockton Scottish Rite Childhood Language Disorders Center. To date, the Center has served 4,258 clients and 1,686 student clinicians have led therapy sessions.

"The Center provides services to children and their families at no charge, making this clinic available to all, regardless of their ability to pay for services," said **Robert E. Hanyak '79**, AuD, associate professor and department chair. The Center's director, **Nicholaus Brock '11, '12**, MS, CCC-SLP, elaborated, "We provide services to families who may not be able to afford private sessions or clients who may need additional services outside of school."

Dr. Hanyak explained that after the partnership between Scottish Rite and Pacific was formed, the number of clients the Center served doubled. "We had a vision to increase the number of children served in the community," Dr. Hanyak said. "We've achieved that and maintain that number every year." **Melissa Jakubowitz '81**, MA, CCC-SLP, former Pacific faculty member and former director of the Center, witnessed this transformation. "When Scottish Rite first started we were focused on children with significant language needs, but were limited in the number of clients we could serve," said Professor Jakubowitz. "Now they offer similar types of services, but with a bigger impact and reach."

An added benefit is the opportunity for Pacific's speech-language pathology students to gain clinical experience. "The partnership for me is a win-win for both Scottish Rite and the University," Dr. Hanyak said. John Baker, member of the California Scottish Rite Foundation Board of Directors, echoes Dr. Hanyak's sentiments. "You have the University who needs to train clinicians, you have Scottish Rite whose goal is to care

for the kids and the kids themselves," Baker said. "It's a win-win-win. Most Scottish Rite Language Centers don't have that ability, because they don't have a university in their backyard."

Professor Brock also views the partnership as a mutually beneficial relationship. "Our program is stronger because we are able to focus on children and serve the community," Professor Brock said. "We benefit from this partnership because our undergraduate students gain clinical experiences and are able to provide speech and language therapy services. This makes Pacific stand out among other programs. We are one of the very few programs in the nation that expose our students to clinical clients as undergraduate students. Beginning their senior year, students work with clients and begin developing their clinical skills. It also allows graduate students to gain clinical experience in addition to their internships."

Each clinical instructor and student clinician comes away from their time at the Center with a story of a client who impacted them personally. Professor Jakubowitz shared her experience of working with a 4-year-old girl who had apraxia, a motor speech disorder where the brain has difficulty moving the parts of the body needed to form sounds and words. "I was working on having the child learn how to say mom," Professor Jakubowitz said. "When I knew the child could say 'mama' I walked her out to the waiting room and asked who the mom was. She said 'mama' and the mom just broke down."

"We benefit from this partnership because our undergraduate students gain clinical experiences and are able to provide speech and language therapy services."

Professor Brock shared a memory from one of this year's summer sessions. "We implemented a snack time every day," he said. "One day I noticed the clients were sitting around the table having conversations with one another. It was great to witness these social interactions and to see that they were comfortable practicing their new skills without a clinician by their side." In the two decades that Baker has served the Foundation he has seen first-hand how these services impact the lives of hundreds of local families. "It allows the kids to interact with society in a way that they wouldn't be able to otherwise," Baker said. 🐾





The Impact of Hearing Loss

By Anne Marie H. Bergthold

“Hearing is communication,” said **Robert E. Hanyak '79**, AuD, associate professor and chair of the Department of Speech-Language Pathology and Audiology. From ordering a cup of coffee to discussing a project with a colleague, hearing is a vital part of daily life. Hearing loss can impact one’s life in a myriad of profound ways.

Shu-En A. Lim, AuD, CCC-A, assistant clinical professor of audiology, has observed that one of the challenges audiologists face is that people often equate the methods used to address hearing loss with those used for vision loss. This comparison

is problematic, because in the world of audiology there is no equivalent to a cheap pair of reading glasses.

“As the old cliché goes, you don’t know what you’ve lost until it’s gone,” said Dr. Lim. “This holds very true with hearing loss. While many think of hearing loss as they do vision impairment, they mistake the ease with which vision can be corrected with how hearing loss is treated. For most individuals who have some form of vision impairment, a lens correction can do wonders. However, most correctable vision impairments still have fully functioning nerves. Most hearing loss occurs as nerve damage.

As such, while an increase in volume can provide more clarity for some, it does not restore the function of how the ear filters and codes sound to the brain. Thus, while hearing devices can provide amplification, we cannot restore the nerve function of how the natural, normal ear processes sound.”

Hearing loss directly affects the brain. It can be easy to ignore the ways your brain compensates for hearing loss. “For those with normal hearing, listening is such a passive activity,” Dr. Lim said. “Once you lose your hearing, it is a very active process of focusing, concentrating and deciphering incomplete sounds to parse out what someone is saying to you, especially with background noise.”

“Hearing loss not only affects communication, but it impacts self-help, independent living and healthy aging,” said **Rupa Balachandran**, PhD, associate professor of audiology and

audiology program director. “New research has found that untreated hearing loss impacts cognitive decline. Hearing loss is a patient safety issue and can impede adherence to care plans that are recommended by the patient’s health care providers. Audiologists are highly trained professionals who can diagnose and manage hearing loss. It is important to get help during the early stages of hearing loss.” All ages can be affected by hearing loss. “There is a big educational impact for young children, even if it is a minor issue,” Dr. Balachandran said.

Pacific’s doctor of audiology program, located in San Francisco, addresses the growing need for the level of expertise that audiologists bring to this area of patient care. “Our program is committed to preparing practice-ready audiologists, while also addressing the shortage of audiologists in California,” Dr. Balachandran said. The San Francisco-based clinic serves a two-fold mission: to offer this valuable service to the community and to provide students with clinical training — a key component of their education. “Our clinic is here to serve our community and provide care for patients of all ages,” she said.

It is vitally important for all health care professionals to understand the impact of hearing loss so that they may provide optimal patient care. “Health care providers should ask about a patient’s hearing status, especially if it impacts their lifestyle or how they can care for themselves,” Dr. Balachandran said. “They should encourage their patients to seek a hearing assessment and incorporate feedback from the audiologist in the patient’s care plan.

“Hearing loss not only affects communication, but it impacts self-help, independent living and healthy aging.”

“Our program is committed to preparing practice-ready audiologists, while also addressing the shortage of audiologists in California.”

For example, a stroke patient who is seeing a physical therapist should be encouraged to have their hearing assessed, because if there is an issue it can impact the patient’s independent living.”

Advances in technology are an essential component of the field of audiology. “Just as we’ve seen the leaps in technology for phones and computers, hearing devices have become highly evolved,” Dr. Lim said. “Some models are essentially Bluetooth® head pieces that allow you to stream phone calls, music and other media.”

Pacific has formed partnerships with a number of industry leaders, allowing students to be exposed to the ways cutting-edge technology can be used to improve their patients’ quality of life. Dr. Hanyak shared an example: “The partnership with ReSound has provided the San Francisco clinic with state-of-the-art equipment for diagnostic audiology and hearing aid dispensing, making our clinic one of the finest in the country.” 🐾



Learn more

Go to upacifichearing.com or contact one of our locations:

**Hearing and Balance Center
San Francisco Campus**
155 Fifth St.
San Francisco, CA 94103
415.780.2001

**Hearing and Balance Center
Stockton Campus**
757 Brookside Rd.
Stockton, CA 95211
209.946.7378



Robert Chan '77,
PharmD
ALUMNUS OF THE YEAR



Carlos Sanders '88,
DPT, GCS
ALUMNUS OF THE YEAR



Carol S. Hirota '77, '79,
MA, CCC-SLP
ALUMNA OF THE YEAR



Why do you love Pacific?

Belonging to the Pacific family has been a great joy, far beyond the education. The people, friends and network contacts have followed me throughout my career.



Tinh An "April" Nguyen '16,
PharmD

I love Pacific's message of commitment to the community and its students! We continue to expand our scope of outreach and I'm constantly inspired to pay it forward to the next generation of students.

As a student, Pacific allowed me to interact with an amazing group of courageous people who were willing to be the first class at a then unaccredited physical therapy program in Stockton. It also gave me the needed skill set to do what I love for more than 25 years.



Kim Howard '03, PT, DPT

I love how the faculty are invested in my success. The beautiful campus was a great place to take our daily walks. Looking back, I can see how they strived to always do better for their students, alumni and campus life. I couldn't have had a better experience. Our class was small and it felt like a family. Pacific feels like home any time I'm on campus.

Pacific is a beautiful campus in Stockton; however, it is the people, the students, faculty, staff and administrators who positively impact my memories and experiences as an alumna.



Norma (Gonzales) Gomez '09, '10, MS

Pacific has an excellent community that fosters growth in your field, interests and beyond. I always felt supported by my Pacific family while working towards my degrees. The professors, mentors, peers and various student groups were instrumental in my education.

Who has influenced you the most in your career?

A Pacific Alumnus, **Carl Britto '68**, a Longs Drug Store manager and past California Pharmacists Association president.



Gina (Curry) Moore '83,
PharmD

There are a lot of people. At Pacific, it was **Dr. Katherine Knapp**. Her leadership, knowledge and work-life balance were an inspiration.

I am still inspired by my first professors at Pacific, **Dr. Baldwin, Dr. Appley** and **Dr. Umphred**. I remember a lot of those lectures. I often joke with my clients – when I recall a technique or theory from my school days – I will say, "I must have been awake that day."



Christopher Berg '14, PT, DPT

Chip Hanker of Central Valley Physical Therapy. He gave me the opportunity to become a physical therapy aide and introduced me into the physical therapy field. He also gave me my first physical therapist job and has taught and mentored me over the last two years. He is a great example of the type of therapist I want to become.

Dr. Faye Sorenson, **Simalee Smith-Stubblefield '83** and **Kathleen Fujinaka Skeels '77**.

Working closely with Dr. Sorenson instilled the values of persistence and integrity as a public school administrator. Simalee Smith-Stubblefield and Kathleen Fujinaka Skeels exemplify characteristics of perseverance, passion to succeed and respect. Both influenced my professional journey. I value their friendship.



Jordan Rice Foldes '13, MS, CCC-SLP

I love not only the education that I acquired from my time at Pacific, but also the community and support that continues to follow me into my professional career. I was fortunate enough to end up working at a school with a vice principal who is also a Pacific graduate, she even got our school mascot changed to Tigers! Every day I see the caliber of student that Pacific sends out to the field and I am proud to be among them.

What was your proudest moment of 2016?

Seeing our daughter growing and maturing at Pacific on her way to dental school.



Elda Roscoe-Gustafson '82,
PharmD

My proudest moment was being a presenter at the annual Pharmacy Scholarship Ceremony program and meeting the students who received the Emmons Roscoe and the Charles W. Roscoe Scholarships.

Being selected as the Pacific Physical Therapy Alumni Association Alumnus of the year. Very cool!



Eliza Bettega '12, PT, DPT

I am assuming it will be getting married! (October 8, 2016)

As the first in my family to graduate from college, I am appreciative that my parents supported my choice to attend Pacific.



Melissa Dougherty '01

Watching my deaf son start his first soccer season with his peers. Proud, proud mama!

Alumni Association Boards

What makes a Pacific education unique?



Jamie Tobitt '90,
PharmD
PRESIDENT, PPA

"Pacific provides a unique path for creating leaders of pharmacy. Pharmacy students are exposed to art, sports and social activities with students of other majors. This helps students grow into broad-minded, well-balanced and contributing members of society. Pacific's ability to provide a diverse experience that has no 'weak spots' is what makes it unique."



Danielle Sartori '04, '06,
PT, DPT, CSCS
PRESIDENT, PPTAA

"After completing both my undergraduate and graduate degrees at University of the Pacific, I believe that a Pacific education provides the opportunities of a large academic institution with the benefits of a small university. The intimate class sizes, close relationships between students and distinguished faculty, accessibility of hands-on learning experiences in state-of-the-art facilities and diverse student population all contribute to a strong community that provides a welcome feeling long after leaving the University."



Christie Abbott '79,
MA
PRESIDENT, PSLPAA

"Having done my undergraduate work at a larger university in the 70's, the thing that was most noticeable to me and that I appreciated the most about Pacific was the sincere desire of the faculty that I succeed in the program. Their guidance and friendship made the graduate experience much more enjoyable and less stressful."

Pacific Pharmacy Alumni Association Board

Veronica Bandy '00, '08
Paula Cannistraci '05
Michael Conner '12
Patty Fong '10
Nancy DeGuire '89

Annie Ho '12
Kevin Komoto '08, '09
Tom Maez '85
David Mitchell '00
Adam Morisoli '10

Nam Nguyen '08
William "Bill" Przybyla '74
Catherine Sterk '77
Jamie Tobitt '90
Edlen Wong '07

Pacific Physical Therapy Alumni Association Board

Eliza Bettiga '10, '12
Whitney Davis '01, '03
Carl Fairburn '10
Jodi Nance '90, '03

Kendell Ravotti '14
Sandra Reina-Guerra '97, '99, '03
Leah Robitaille '06
Michelle Rutherford '11

Danielle Sartori '04, '06
Rachel Vegaizer '12
John Vincent Viernes, III '03

Pacific Speech-Language Pathology Alumni Association Board

Christie Abbott '79
Harriet Doyle '73
Susan Farver '96, '98
Jordan Rice Foldes '13

Wendy Frush
Nancy Harlow '06
Alexia Mazzone '04
Nancy Ortize '77

Mary Rios '87
Mimi Tran '04
Anne Marie Wolter '08
Mari Yao '04

Class Notes

'76

Paul Oesterman '76, PharmD, was awarded the 2015 Nevada Society of Health-System Pharmacists Pharmacist of the Year Award.

'77

Gregory Alston '77, PharmD, accepted the position of associate dean of academic quality at South University in Savannah, Georgia.

'81

Winston Wong '81, PharmD, was selected to serve on a steering committee to represent leaders throughout the oncology care spectrum in an effort to "address critical questions around care pathways and develop new strategies to ensure pathways are designed to align with provider, payer and patient needs."

'83

Anthony Morreale '83, PharmD, received the Academy of Managed Care Pharmacy Foundation's 2016 Steven G. Avey Award. This award is the highest honor in managed care pharmacy and recognizes sustained, exemplary and distinguished service to the profession.

'84

Fred Plageman '84, PharmD, accepted a position as pharmacy clinical services manager for 13 Walmart stores.

'87

Rajesh "Raj" Patel '87, PhD, invented an implantable drug to deliver long-lasting medication to opioid-dependent patients, which received Federal Drug Administration approval in May 2016.

'90

Stuart McElhaney '90, PharmD, was featured in "Hawaii Business," an online pharmacy publication.

'91

Patricia Brown '91, '92, MA, was inducted to the Chowchilla Athletic Foundation Hall of Fame.

'94

Andrea (Tipton) Han '94, PharmD, accepted a position as outpatient pharmacy director for the Kaiser Diablo Service Area.

'96

Cathrine Misquitta '96, PharmD, was invited to speak at the University's Managed Care Series. She presented on the topic of "The Role of the Pharmacist in Controlling Costs in a Pharmacy Benefit Manager." In addition, she and her husband, Rajiv, coauthored a vegan cookbook entitled, "Healthy Heart, Healthy Planet: Delicious Plant-Based Recipes and Tips to Reduce Heart Disease, Lose Weight and Preserve the Environment."

'04

Alexia Mazzone '04, MS, CCC-SLP, and husband, James, welcomed their second baby, Francesca Marie Mazzone on December 6, 2015.

'05

Amit Kokate '05, '07, MS, PhD, accepted a position as a fellow, formulation lead at Novartis in New Jersey.

'06

Jeff Chan '06, PharmD, accepted a position as outpatient pharmacy director for the Kaiser Diablo Service Area.

'07

Kristofer Brock '07, '08, MS, PhD, CCC-SLP, accepted a position as assistant professor of human communication studies at California State University, Fullerton, and introduced a new program, CSUF Titan Tykes Speech Station, aimed to increase the communicative skills of children ages 3 to 7 with their peers.

'08

Adam Morisoli '10, PharmD, and **Brandice Morisoli '07, '11,** PharmD, welcomed their daughter, Kayton.

'08

Anne Marie Wolter '08, MS, and her husband, Hal, welcomed their son, Luke Robert Wolter on December 21, 2015 at 5:20 p.m., weighing 8 pounds, 5 ounces and measuring 21 inches.

'10

Josiah Danielson '10, DPT, and his wife, welcomed their second daughter, Margaret Eliza on January 23, 2016.

Patty Fong '10, PharmD, accepted a position as staff pharmacist at Option Care.

'11

Wilson Fung Fung '11, PharmD, accepted a position as clinical pharmacist at Midland Memorial Hospital in Midland, Texas.

'12

Michael Conner '12, PharmD, and **Jennifer (Rodriguez) Conner '13,** PharmD, welcomed their son, Xander, on May 14, 2016.
Photo credit: Stephanie Manning

'13

Chintan Shah '13, PharmD, accepted a position as pharmacy manager at CVS in Bakersfield, California.

'14

Daniel DaCosta '14, PharmD, accepted a position as associate clinical scientist at Stemcentrx, Inc.
Christina Go '14, PharmD, accepted a position as diabetes care manager at Santa Clara Valley Medical Center.

David Odabashyan '14, PharmD, accepted a position as clinical pharmacist at the Los Angeles County Department of Health Services.

'15

Bahar "Tina" Alidad '15, PharmD, accepted a position as pharmacist at Cedra Pharmacy in Montebello, California.

'16

Abigail Sheats '16, DPT, was featured in a YouTube video with her guide dog, Rowan, about the partnership between Guide Dogs for the Blind and Dogs4Diabetics.

Jessica (Mixon) Tracy '16, DPT, was married to Nathaniel Tracy on September 19, 2015.

60 Years

In 1965, **Dean Ivan "Cy" W. Rowland** founded the Alpha Psi chapter of Phi Delta Chi. In 2016, they celebrated their 60th anniversary during Pacific Homecoming by hosting a foundation dinner and Diamond Jubilee Celebration dinner. The reunion leaders were **Ed Larimer '69,** RPh, **Jack Schlegel '67,** RPh, **Katelyn Fischer '16,** PharmD, and **Logan Brodnansky '16,** PharmD.



In Memoriam

Michael J. Bellini '61
Alex E. Seifert '61, '62
Wayne E. Gohl '64
Robert L. Grohs '64
Norman W. Phelps '65
William L. St. Louis '66
Raymond L. Smart '68
Garry W. Boswell '69
William A. Robertson '69
Robert A. Pokorny '71
Moheb M. Rizkallah '74
Thomas E. Blagg '75
Gerald L. Friesen '75
Charles D. McGregor '75
Nick Aksoy '76
Dennis K. Ja '76
Dariush S. Noori '76
Clifford D. Olson '76
Laraine Riech Silverman '76
Mark D. Dreblov '80
Robert V. Grady '80
Gurmukh Singh Gill '81
Diane Davis Pendergraft '81
Clifford D. Burgin, III '84
Pat Wine '86
Sara J. Schmidt '88
Keith Y. Higa '90
Peter E. Koo '92

2016 Alumni of the Year

By Becky Perry '01, '09



Robert Chan '77, PharmD



Carlos Sanders '88, DPT, GCS



Carol S. Hirota '77, '79, MA, CCC-SLP

ROBERT CHAN '77, PHARMD

Robert Chan '77, PharmD, has shown exemplary service to the School, the University and the profession since his graduation nearly 40 years ago. After earning his doctor of pharmacy degree, Dr. Chan went to work for Longs Drug Stores in Walnut Creek, California, where he was responsible for designing and developing the company's first enterprise pharmacy system. This was followed by roles as a senior executive for multiple health care systems and managed care practices. He was a co-founder of the health care claims services company United Medicorp, Inc. taking it from inception to an initial public offering. He has experience in technology, operations, strategy, business development and leadership. Dr. Chan has served on the boards of many professional associations including the Academy of Managed Care Pharmacy, the Pharmaceutical Research and Education Foundation of Nevada and the Severe Acute Respiratory Syndrome (SARS) Foundation of Taiwan. In addition, he served a term as a member of the California Pharmacists Association House of Delegates.

In 2003, as the world was fighting the pandemic spread of the SARS virus, Dr. Chan took matters into his own hands to help his fellow man. One of the countries with the highest number of infected SARS cases was Taiwan, the native

home of his wife, Ann. Dr. Chan and his wife recognized that there was a severe shortage of protective equipment and the country's emergency services were insufficient. In response, they formed a medical foundation and raised private funding to purchase one million SARS respirators.

Dr. Chan has served the profession of pharmacy in countless significant ways since his time at Pacific. He has offered his time and talent to Pacific as a member of the Pacific Pharmacy Alumni Association and the Dean's Leadership Council. In addition, he has been a generous annual donor to the School for almost three decades. "Being recognized as the Pacific Pharmacy Alumni Association Alumnus of the Year is one of the proudest moments of my life," said Dr. Chan. Today, his Pacific legacy continues through his daughter, who recently completed her last year of Pacific's pre-dental program. 🐾

"Being recognized as the Pacific Pharmacy Alumni Association Alumnus of the Year is one of the proudest moments of my life."

CARLOS SANDERS '88, DPT, GCS

Carlos Sanders '88, DPT, GCS, has been involved with the profession of physical therapy for nearly 30 years and he continues to demonstrate a love and passion for the field. After graduating from Stanford University in 1986 with a bachelor of science in human biology, Dr. Sanders found his way to Stockton where he became a member of the charter class of the physical therapy graduate program. After Pacific, he went on to receive his doctor of physical therapy degree from Northeastern University in 2009.

Today, he is the owner and operator of Geriactive, a company providing private physical therapy services to the elderly population of the San Francisco Peninsula since 1998. He also continues to serve his alma mater as an adjunct professor of geriatric physical therapy. As a professor, Dr. Sanders appreciates connecting with students and hopes that he can impart some experiential knowledge that they can use to augment their didactic training.

Over the course of his career, Dr. Sanders has received board certification by the American Physical Therapy Association as a geriatric clinical specialist. He was awarded the Regency Health Services Excellence in Rehabilitation Leadership Award in 1997 and recognized as Pacific's Adjunct Professor of the Year in 2012.

Dr. Sanders said of his recognition as the Pacific Physical Therapy Alumni Association Alumnus of the Year: "I feel that this honor is for the 30 or so students who stepped on this campus in 1986. It is so awesome to see the program thriving and to be part of the line of great therapists who began here."

When not in the classroom or in the field, Dr. Sanders can be found performing in the Bay Area jazz scene. He is a songwriter, keyboardist and instrumentalist who performs under the name Uncle Los Music. According to his website, www.unclelosmusic.com, his sound "strives to bridge the gap between smooth jazz and soul music." He currently has one album available on iTunes™ with another coming soon. 🐾

"I feel that this honor is for the 30 or so students who stepped on this campus in 1986. It is so awesome to see the program thriving and to be part of the line of great therapists who began here."

Photo credit: Mark Long of Eleakis & Elder Photography

CAROL S. HIROTA '77, '79, MA, CCC-SLP

Carol Hirota '77, '79, MA, CCC-SLP spends most of her time serving others, whether through her position as director of adult education for Stockton Unified School District, her service on countless community boards or her role as mentor to dozens of college-aged women. "I am humbled by this award," said Hirota. "I believe there are so many opportunities to engage and serve."

In the years since graduation, Hirota has served on several California Speech-Language-Hearing Association (CSHA) committees, including a two-year term as commissioner of association services. She has earned two awards from CSHA in recognition of her outstanding achievements and service to the profession.

Several years ago, Hirota made the transition from speech-language pathologist to administrator, becoming the principal of the Stockton School for Adults. In this new role she is a passionate advocate for her students and staff. Hirota is a well-respected and active member of several adult education organizations in California, including the Association of California School Administrators, who awarded her the Region 7 Adult Education Administrator Award in 2004.

Hirota is also actively involved with her alma mater. She devoted eight years of service to the Pacific Speech-Language Pathology Alumni Association and is currently in her second year as a member of the Pacific Alumni Association board of directors. She has held several prominent positions on University committees, including chair of the Delta Gamma Advisory Team. In her role with Delta Gamma she encourages and champions the members of Pacific's Delta Epsilon chapter. For her tireless efforts on behalf of Delta Gamma, the University's division of student life recognized her with the Advisor of the Year Award in 2016.

Hirota is also an avid community volunteer, serving as a member of the Junior League of San Joaquin and the Miracle Mile Improvement District Board. Passionate about literacy, she has volunteered with several literacy organizations at both the local and state level. "She is very generous with her time," said friend and colleague **Simalee Smith-Stubblefield '83, MA, CCC-SLP**. "She is amazing; I don't know how she gets everything done that she does!" 🐾

"I am humbled by this award. I believe there are so many opportunities to engage and serve."

Alumni Serving in Professional Organizations

July 1, 2015 to June 30, 2016

American Pharmacists Association (APhA)

Elizabeth Johnson '87, PharmD
Policy Referencing Committee Member

Lawrence "L.B." Brown '99, PharmD
President, Board of Trustees

Saranpreet Nagra '16, PharmD
Communications Standing Committee Member

American Speech-Language-Hearing Association (ASHA)

Melvin Cohen '69, '71, MA, CCC-SLP
Financial Planning Board Chair

Robert Hanyak '79, AuD
Audiology Advisory Committee Member

Melissa Jakubowitz '81, MA, CCC-SLP
Financial Planning Board Member

American Society of Health-System Pharmacists (ASHP)

Maria Serpa '87, PharmD
Member, Council on Public Policy, California

Stacey Raff '96, PharmD
Member, Commission on
Affiliate Relations, California

California Academy of Audiology (CAA)

Robert Hanyak '79, AuD
Central California Representative

Benjamin Thompson '18
Student Representative

California Pharmacists Association (CPhA)

Donald Floriddia '71, PhD
Treasurer, San Joaquin Board

Alan Wong '72, '78, RPh
President, Contra Costa Board

Colleen Carter '76, PharmD
President, Santa Barbara Board

Douglas Hillblom '78, PharmD
Trustee, Board of Trustees

Aglaia Panos '78, PharmD
President, Marin County Board

Jeffrey Hansen '84, PharmD
President, Napa Valley Board

John Sandstrom '86, PharmD
President, Ventura County Board

Victor Moya '89, PharmD
President, Peninsula Board

Jeffrey Wong '97, PharmD
President, Pharmacist's Society
of San Francisco Board

Erin Cabelera '98, PharmD
Chairperson, Academy of Employee Pharmacists

Veronica Bandy '00, '08, PharmD
Speaker of the House, Board of Trustees

David Mitchell '00, PharmD
Elk Grove Regional Trustee,
Sacramento Valley Board

Edlen Wong '07, PharmD
President, Board of Trustees

Chau Phan '09, PharmD
President, Peninsula Board

Patty Fong '10, PharmD
Secretary, Sacramento Valley Board
Citrus Heights Regional Trustee,
Sacramento Valley Board
Isleton Regional Trustee,
Sacramento Valley Board

Lindsey Leong '10, PharmD
President, Pharmacist's Society
of San Francisco Board

Matthew Dunn '11, PharmD
Treasurer, Central Valley Board

Kevin Lau '11, PharmD
President, Sacramento
Valley Board
Folsom Regional Trustee,
Sacramento Valley Board
Davis Regional Trustee,
Sacramento Valley Board

Jill Henry '12, PharmD
Carmichael Regional Trustee,
Sacramento Valley Board

In "Alex" Kang '13, PharmD
President, San Joaquin Board

Peter Lai '14, PharmD
Secretary, Peninsula Board

Ashley Mendoza '16, PharmD
Student Liaison, University of the Pacific,
Central Valley Board

California Speech-Language-Hearing Association (CSHA)

Pam Heino '72, MS, CCC-SLP
District 10 Director

Robert Hanyak '79, AuD
State Nominating Committee Chair
District 3 Advisory Committee Member

Rachel Torres '81, '83, MA, CCC-SLP
Honors Committee Member
District 3 Advisory Committee Member

Simalee Smith-Stubblefield '83,
MA, CCC-SLP
District 3 Advisory Committee Member

Lynn Ruthenbeck '85, '86, MA, CCC-SLP
State Nominating Committee Member

Benjamin Reece, '01, '08, MS, CCC-SLP
District 3 Advisory Committee Member

Adrienne Wroebel '04, MS, CCC-SLP
Marketing Committee Member
District 3 Advisory Committee Member

California Society of Health-System Pharmacists (CSHP)

Felix Tsui '75, PharmD
Delegate, Diablo Chapter

Gene Lew '76, PharmD
Continuous Professional Development
Committee Chair, Southern California

Lester Wong '76, PharmD
Continuing Education Co-Chair, Diablo Chapter
Membership Chair, Diablo Chapter

Keith Yoshizuka '76, PharmD
Government Affairs Chair, Diablo Chapter

Steve Thompson '77, PharmD
Director, South Bay/Long Beach Chapter

Norman Fox '79, PharmD
President-Elect, Central Valley Chapter

Irene Scott '79, PharmD
Delegate, Central Valley Chapter

William Quan '80, PharmD
President-Elect, Southern California Chapter

Lily Lee '83, PharmD
Industry Liaison, Diablo Chapter

William "Bill" Yee '83, PharmD
California Delegate to the American Society
of Health-System Pharmacists House
of Delegates, Central Valley

Loriann DeMartini '84, PharmD
Secretary, Board of Directors

Maria Serpa '87, PharmD
President, CSHP Foundation

Brian Bickford '92, PharmD
Treasurer, Golden Empire Chapter

Stacey Raff '96, PharmD
Chair, Board of Directors

Mimi Nguyen '99, PharmD
President-Elect, San Diego Chapter

Ryan Taal '99, '03, PharmD
Delegate, Central Valley Chapter

Rowena Wei '99, PharmD
Alternate Delegate, Diablo Chapter

Jason Bandy '00, PharmD
Treasurer
CSHP E-Board Liaison, Sierra Chapter

Giselle Willick '00, PharmD
Director, Southern California Chair

Floreida Uriarte '03, PharmD
Membership Chair, Sierra Chapter

Katherine Medina '04, PharmD
Alternate Delegate, Diablo Chapter

Tricia Doblados '02, '05, PharmD
Public Relations, Central Valley Chapter

Diana Thamrin '05, PharmD
Alternate Delegate, Diablo Chapter

Jennifer Floyd '07, PharmD
Past President, San Diego Chapter

Natalie Fan '10, PharmD
Continuing Education and Night Out
With Industry Chair, Diablo Chapter
Delegate, Diablo Chapter

Jerry Horner '10, PharmD
Alternate Delegate, Diablo Chapter

Eva Wong '10, PharmD
Delegate, Orange County Chapter

Michael Scott Harada '11, '14, PharmD
Public Relations Committee Chair,
South Bay/Long Beach Chapter

Vittoria Ledesma '11, '14, PharmD
Communications Committee Chair,
South Bay/Long Beach Chapter

Elizabeth Chang '12, PharmD
Delegate, Golden Gate Chapter

Nina Nguyen '12, PharmD
Secretary, Central Valley Chapter

Camille Camargo '13, PharmD
Delegate, Central Valley Chapter

Matthew Kamada '13, PharmD
President-Elect, South Bay/Long Beach Chapter
Delegate, South Bay/Long Beach Chapter

Cynthia Tan '13, PharmD
Treasurer, Central Valley Chapter
Continuing Education Coordinator,
Central Valley Chapter

Lauren Epperson '14, PharmD
Clinical Affairs Committee Chair,
South Bay/Long Beach Chapter
Alternative Delegate,
South Bay/Long Beach Chapter

Sunny Lee '14, PharmD
Board of Directors,
San Fernando Valley Chapter

Ashley Miyasaki '15, PharmD
Secretary, Sierra Chapter

Nicole Nguyen '16, PharmD
New Practitioner, Board of Directors



Submit your professional
organization service at
PacificPaHSalum.org/connect



Dr. Rahimian with a student in the lab.

NIH Grants Create Research Opportunities for Faculty and Students

By Anne Marie H. Bergthold

The School is proud to be a part of the rich tradition of research funded by the National Institutes of Health (NIH). Investing more than \$32 billion a year, NIH is the largest public funder of biomedical research in the world. When Pacific faculty are awarded an NIH grant, it allows them to be on the cutting edge of health care and creates opportunities for students to be involved in research.

Xin Guo, PhD, professor of pharmaceuticals and medicinal chemistry, was awarded an NIH grant for his study entitled “Lipid-coated, pH-sensitive Phosphate Particles for Intracellular Protein Delivery.”

“This grant allows my research group to design and develop a novel nanotechnology that could efficiently deliver active proteins into cells,” said Dr. Guo. “Specifically, we are developing a nano-system called lipid-coated phosphate particles to deliver two proteins: catalase that can rescue cells from oxidative stress and cytochrome C that can induce programmed death of cancer cells.”

“My recent research is focused on nanotechnologies that can help drugs travel to the site of action.”

“After the completion of the human genome project, more and more proteins have been identified as future medicines,” Dr. Guo explained. “However, one major challenge here is that many proteins need to penetrate into cells to do their job, but are too large to do so. In order to turn a promising molecule into a medicine, we have to make sure that they are delivered to the site of drug action. Therefore, my recent research is focused on nanotechnologies that can help drugs travel to the site of action.”

Roshanak Rahimian, PharmD, MSc, PhD, professor of physiology and pharmacology, was awarded an NIH grant that allows her to continue her research on the vascular effects of estrogen through a study entitled “Diabetes, Estrogen and Endothelial Dysfunction.” Dr. Rahimian explained that cardiovascular disease (CVD) is the leading cause of mortality

and morbidity in diabetic patients. “The risk for CVD is lower in premenopausal women compared to age-matched men,” said Dr. Rahimian.

“This difference disappears in the postmenopausal years and is presumably related to the reduced levels of female sex hormones, in general, and estrogen, in particular. However, premenopausal women with diabetes not only lose this sex-based cardiovascular protection, they actually experience a higher relative risk of CVD compared to diabetic men, which suggests that diabetes abolishes some of the beneficial effects of estrogen. Given this epidemiological evidence, the question arises as to what mechanisms underlie the loss of sex-mediated vasoprotection in diabetic women. This research will explore the basis for the loss of sex-based cardiovascular protection. The knowledge gained from this study will ultimately enhance our understanding of the mechanisms underlying the vascular dysfunction in diabetic premenopausal women. The enhanced insight into these mechanisms is expected to eventually also be beneficial for the male population.”

Mamoun M. Alhamadsheh, PhD, associate professor of pharmaceuticals and medicinal chemistry, hopes to develop a novel approach to enhance the in vivo half-life, or duration in the body, of therapeutic agents. Dr. Alhamadsheh was awarded an NIH grant for his study entitled “Harnessing Transthyretin to Extend the In Vivo Half-life of Therapeutic Peptides.”

“Peptides are molecules that play a crucial role in many biochemical and physiological processes,” said Dr. Alhamadsheh. “Many Food and Drug Administration-approved drugs are peptides used for a range of disorders, such as cancer and diabetes, among others. The grant is helping us develop a fundamentally new approach for enhancing the in vivo half-life and efficacy of therapeutic peptides.”

“If we are successful we should be able to decrease dosing frequency and improve patient convenience and compliance.”

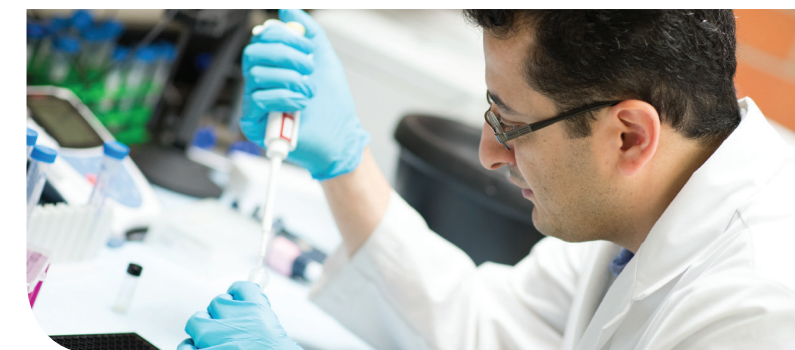
“It is hard seeing elderly patients taking several medications multiple times a day,” Dr. Alhamadsheh said. “If we are successful, we should be able to decrease dosing frequency and improve patient convenience and compliance. Also, this research could give new life to potent medications that failed simply due to their short half-life in the human body.”

William K. Chan, PharmD, PhD, department chair and professor of pharmaceuticals and medicinal chemistry, was awarded an NIH grant for his study entitled “Investigating the Molecular Mechanisms in Controlling the Aryl Hydrocarbon Receptor Protein Levels.”

“The NIH grant allows us to conduct biomedical experiments to study how cells control the amount of the aryl hydrocarbon receptor, which is important in many diseases ranging from cancers to autoimmune diseases,” said Dr. Chan. “My goal is to be able to contribute to our understanding of how cells function and potentially be able to design new drugs or discover new drug targets to better humankind.”

Each of these research studies brings the School national recognition and creates research opportunities for students. “Federal grants have a strong impact on the research environment of our School,” Dr. Rahimian said. Dr. Guo agrees, he said, “This research project is one part of the many vibrant scholarly activities in our School. Five graduate students are now working in my lab and all of them are in one way or another involved in this research project.”

Additionally, a number of doctor of philosophy and doctor of pharmacy (PharmD) students are assisting Dr. Alhamadsheh with his research. “Our research was highlighted by a recent publication from our lab in one of the most prestigious journals in the world, Nature Chemical Biology,” Dr. Alhamadsheh said. Dr. Chan added, “This grant allows me to guide undergraduate and PharmD students in conducting biomedical research in my lab.” Advances in health care are a result of the creativity and dedication of researchers such as Dr. Alhamadsheh, Dr. Chan, Dr. Guo, Dr. Rahimian and **Jim Mansoor**, PhD, (see page 35). 🐾



Dr. Alhamadsheh in his lab conducting research.

Total NIH Grants \$1.8 MILLION

\$299,319

Sept 1, 2014 - Aug 31, 2017
Mamoun M. Alhamadsheh, PhD

\$367,058

Jun 6, 2014 - May 31, 2017
William K. Chan, PharmD, PhD

\$316,108

Sept 1, 2015 - Aug 31, 2018
Xin Guo, PhD

\$302,438

Jul 25, 2016 - Jun 30, 2019
Roshanak Rahimian, PharmD, MSc, PhD

\$375,600

Jul 1, 2016 - Jun 30, 2018
Jim Mansoor, PhD

\$160,000

Feb 1, 2017 - Jan 31, 2020
Carlos A. Villalba-Galea, PhD

Faculty Spotlights

By Anne Marie H. Berghold, Becky Perry '01 '09, Dua Her '09



Carlos A. Villalba-Galea, PhD



Shu-En Lim, AuD, CCC-A



Jim Mansoor, PhD



Nicholaus Brock, '11, '12, MS, CCC-SLP

CARLOS A. VILLALBA-GALEA, PHD

Carlos A. Villalba-Galea, PhD, assistant professor of physiology and pharmacology, believes that teaching and research go hand-in-hand. "Teaching is an essential aspect of my research, which interfaces biology, chemistry and physics," said Dr. Villalba-Galea. "I am convinced that undergraduate and graduate students can contribute to the development of scientific projects that can strongly impact our society. In turn, research is an effective and meaningful way to generate new concepts and ideas, which result in effective and transformative learning experiences for students." Dr. Villalba-Galea came to Pacific for the opportunity to be able to do research and teaching in a balanced way.

During his postdoctoral training in neurobiology at Duke University, he conducted research at the Marine Biological Laboratory (MBL) in Woods Hole, Massachusetts. The highlight of his time at MBL was in 2003 when he was a Fellow of the Grass Foundation.

Dr. Villalba-Galea continued his postdoctoral training at The University of Chicago, where he trained under Francisco Bezanilla, PhD, a highly renowned biophysicist and member of the National Academy of Science. While at The University of Chicago, Dr. Villalba-Galea studied the fundamental molecular processes that underlie electrical phenomena in lifeforms. This experience laid the foundation for Dr. Villalba-Galea's current research – investigating the molecular and atomic basis for cellular electrical activity and its application to pharmacology, with a focus on infantile epilepsy.

When he isn't studying cells, he can often be found playing or coaching baseball. His children share his love of baseball and he has coached their teams. During his time in Richmond, Virginia he also participated in theatrical productions produced by the West End Assembly of God.

Dr. Villalba-Galea got a taste of culture shock the first time he was invited to an event in the United States. The invitation specified a start and end time. He explained that in Venezuela

gatherings are more informal; there is no set time frame and it is understood that your friends will invite their friends. The thing he misses most about home is family. Dr. Villalba-Galea shares that extended family is an integral part of life in Venezuela. Food is also an essential part of his culture. "I miss the food; I try to fill that void with my own cooking," he said. 🐾

SHU-EN LIM, AUD, CCC-A

Shu-En Lim, AuD, CCC-A, assistant clinical professor of audiology, has found interesting and unique aspects of every city in which she has lived. Originally from Singapore, Dr. Lim earned her bachelor of science in communication sciences and disorders from Northwestern University. She shared that she often longs for the view she had of Lake Michigan while an undergraduate student. She earned her doctor of audiology from Vanderbilt University; she misses the amazing food and music she experienced in Nashville, Tennessee. Today she calls San Francisco home, having been drawn to California to complete a clinical fellowship at University of California, San Francisco. She joined the Pacific faculty in 2015.

At Pacific, Dr. Lim is able to do clinical research and work with students, a combination of roles she finds very attractive. "Working with students is both the most challenging and rewarding aspect of my role," said Dr. Lim. "Student training takes a lot of time and effort, but it's truly a rich reward to see them grow and succeed. My goals are to provide the highest level of care for my patients, to build and develop the clinic and participate in the training of the next generation of audiologists."

Dr. Lim shared that moving to California was a nice change of culture and pace – speaking to the diversity of people, culture and food. Dr. Lim enjoys reading and exploring San Francisco by urban hiking with friends. She is also involved in her church and community group. Her ideal weekend would be spent with family and friends, eating great food while traveling and exploring new places. 🐾

JIM MANSOOR, PHD

Like many professors at Pacific, **Jim Mansoor, PhD**, is inspired by his students. "I love inquisitive and curious students, students who think and ask questions that show a deep level of thinking," said Dr. Mansoor. "If I can't answer the question, it pushes me to find the answer and become more knowledgeable." He originally joined Pacific in 1991 to assist **Brad "Brad" Stockert, PT, PhD**, in teaching gross human anatomy, which he admits is one of his favorite courses. In addition to his tenure in the doctor of physical therapy (DPT) program, he also teaches courses for Pacific's new physician's assistant (PA) program based in Sacramento. He is excited about DPT and PA students working together on newly-developed interdisciplinary case studies.

As a researcher his drive comes from knowing that he is adding "to the knowledge base of the physiology of humans." He adds, "The more we know about how humans function, the better we can deal with disease processes and hopefully improve outcomes." Recently he has been studying exhaled breath techniques and their impact on human functions. "We can compare the exhaled breath in individuals with a disease, like idiopathic pulmonary arterial hypertension, against individuals without the disease, but matched in all other ways, to see what is the same and what is different," Dr. Mansoor said. "We can then try to hypothesize what might be happening within the cells of the lungs of those with the disease."

Dr. Mansoor is an athlete and did masters bicycle racing for 15 years. In the wintertime he can be found on the ski slopes in Lake Tahoe. Dr. Mansoor is a fan of all sports, but especially enjoys watching the Tour de France and both the Summer and Winter Olympics. 🐾

Arsenic and Exhaled Breath

"Millions of people in the United States are exposed to arsenic in food and drinking water," said **Jim Mansoor, PhD**, professor of physical therapy. "Ingested arsenic is an established cause of malignant and non-malignant lung disease, with the developing lung seeming to be particularly susceptible." A collaboration between University of the Pacific, University of California, Berkeley and University of California, Davis has resulted in the award of a \$375,000 National Institutes of Health grant for a study entitled "Using Exhaled Breath to Evaluate the Long-term Mechanisms of Early-life Arsenic Exposure." Collaborators on this project are Craig M. Steinmaus, MD, of UC Berkeley as primary investigator (PI), Edward S. Schelegle, PhD, of UC Davis as PI and Cristina E. Davis, PhD, of UC Davis as subaward PI.

Dr. Mansoor's research will take him to Antofagasta, Chile in the spring of 2017. At one time, the city had a single water source and that water had been contaminated with arsenic. The local population's exposure to arsenic presents a rare research opportunity. "Dr. Steinmaus has been investigating a unique situation in Chile

NICHOLAUS BROCK '11, '12, MS, CCC-SLP

Community is the source of inspiration and motivation for **Nicholaus Brock '11, '12, MS, CCC-SLP**, assistant clinical professor of speech-language pathology (SLP) and director of the Stockton Scottish Rite Childhood Language Disorders Center. His acceptance of the position at Pacific was so that he could maximize his impact on the community.

A Stockton native, Professor Brock completed both his bachelor of science and master of science in speech-language pathology at Pacific. Before starting as an undergraduate student, he was introduced to a number of the faculty through his older brother, **Kristofer Brock '07, '08, MS, PhD, CCC-SLP**, who graduated from the program. He was impressed by the faculty and the academic opportunities. "Pacific has one of the few programs that allows you to work with clients as an undergraduate student," said Professor Brock.

In his role as director of the Scottish Rite Childhood Language Disorders Center, he is faced with the challenge of helping SLP students apply what they have learned in the classroom to clinical settings. "The difficult part of doing clinical intervention is it doesn't always follow the theoretical on-paper client," Professor Brock said. "[As clinical director] the most challenging aspect is trying to figure out what the students need to know." He has observed that there needs to be a balance of ensuring that students feel confident and well-prepared, but not overwhelmed. Professor Brock's goal is that when students do their clinical training they will understand how an experience with one client can be adjusted to work with other clients.

His ideal weekend would be spent relaxing and skimboarding at Manresa State Beach, a campground near Santa Cruz that overlooks the ocean. Weekend evenings would be spent around the campfire with friends and family. 🐾

involving approximately 100,000 adults who were exposed to a well-documented period of high arsenic drinking water concentrations while in utero or as young children, but not later in life," Dr. Mansoor said. "This scenario, with its large population and excellent data on past exposure, is unprecedented in environmental epidemiology."

For this study they will be using exhaled breath to investigate the long-term impacts of early-life toxic exposure. "We are looking at chemical mediators in exhaled breath that will tell us about the lung environment, specifically inflammation, oxidative stress and lung remodeling, [...] Currently, the exact pathophysiology of these effects and mechanisms by which an in utero chemical exposure can lead to lung disease 40 to 50 years after the exposure occurred are unknown. The better we understand how environmental substances affect the body, the more we can do as a society to prevent exposure or deal with exposures when they occur."

Our faculty and staff are constantly earning their stripes on campus, across the country and around the world. Review our 2016 publications, recognitions, presentations and grants.

TIGER STRIPES

Presentations

Pharmacy Practice

Eric G. Boyce, PharmD
Professor, Associate Dean
for Academic Affairs

"Incorporating the Patient Care Process in the Curriculum - Ready, Set, Go?" Presentation at the Teachers Seminar: Dialogues on Foundations of Teaching. American Association of Colleges of Pharmacy, Annual Meeting. Anaheim California. July 23, 2016. Participants will become familiar with the Pharmacists' Patient Care Process and develop plans to incorporate it into their curricular outcomes and curriculum. <http://www.aacp.org/meetingsandevents/AM/2016/Documents/AM16-Programming-web.pdf>

Peter Hilsenrath, PhD
Joseph M. Long Chair of Healthcare
Management, Professor of Economics

"South Africa's Natural Resource-Based Economy: Technology, Capabilities and Path Dependency," Pacific World History Institute Meeting, San Francisco, May 2016.

Precautionary Savings: "Health Insurance & Macroeconomic Structural Adjustment in China," The 6th International Jerusalem Conference on Health Policy, Jerusalem, May 2016.

"A Fraught Public-Private Partnership and the Evolution of Health Services in China," Association of University Programs in Health Administration Global Health Pre-Conference Symposium, Kansas City, June 2016.

"Reflections on Samuel Levey: Scholar, Mentor and Pioneer," 38th Annual Samuel Levey Healthcare Leadership Symposium Reception, Iowa City, September 2016.

Elaine Law, PharmD, BCPS
Assistant Clinical Professor,
Regional Coordinator – San Jose

Abigail Lin '17, Connie Lin '17, Jessica Liang '14, PharmD, and Elaine Law, PharmD, BCPS, FCSHP. "Cost-Effective Analysis to Evaluate Potential Replacement of Traditional aPTT Testing with Anti-Factor Xa at a Small Community Hospital," poster session presented at American Society of Health System Pharmacists 51st annual Midyear Meeting; 2016 December 4-8; Las Vegas, Nevada.

Lydia Foo '17, Olga DeTorres, PharmD, and Elaine Law, PharmD, BCPS, FCSHP. "Assessing Adherence to Guideline Weight-Based Dosing of Pre-Surgical Antibiotic Prophylaxis in OB/GYN Patients at a Community Hospital," poster session presented at American Society of Health System Pharmacists 51st annual Midyear Meeting; 2016 December 4-8; Las Vegas, Nevada.

Yvonne Mai '13, PharmD
Assistant Professor, Regional
Coordinator – Stockton

Megan Shimada '15, PharmD, **Jennifer Foster '17,** **Hao Nguyen '17,** Patricia A. Carlton, PharmD, CDE, **William Yee '83,** PharmD, FASHP, FCSHP, Yvonne Mai, PharmD. "Impact of Pharmacist-Driven Transitions of Care: A Pilot Study." Poster Presentation. CSHP Seminar, October 2016, Anaheim, California.

Amy Pham '15, PharmD, **Nina Doan '17,** Rosemary Hernandez, PharmD, **William Yee '83,** PharmD, FASHP, FCSHP, Yvonne Mai, PharmD. "Evaluating the Impact of Pharmacy Services in the Operating Room." Poster Presentation. CSHP Seminar, October 2016, Anaheim, California.

Kerina Chiu '15, PharmD, **Nina Doan '17,** Katherine Lee, PharmD, Rosemary Hernandez, PharmD, BCPS, **William Yee '83,** PharmD, FASHP, FCSHP, Yvonne Mai, PharmD, "Pharmacist Impact on Reducing Days of Therapy of Piperacillin/Tazobactam." Poster Presentation. CSHP Seminar, October 2016, Anaheim, California.

William Murray '84, PharmD
Clinical Pharmacist

Murray W, Murray JW, Arevalo E. December 6, 2016. "Estimation of Vancomycin Clearance and Area Under the Curve (AUC) from Non-steady-state Serum Concentrations: Comparison of the Relationship Between Trough Levels and AUC calculations." Poster Presentation American Society of Health-System Pharmacists Midyear, Las Vegas, Nevada.

Edward L. Rogan, PharmD, BCACP
Assistant Professor

California Pharmacists Association Annual Meeting Continuing Education presentation entitled "How Do We Find the Time? Strategically Implementing Pharmacy Students and Technicians into Programs in Relation to SP493." April 2015, San Diego, California.

Veronica Bandy '00, '08, PharmD
Cynthia Valle-Oseguerra '12, PharmD

Sachin A. Shah, PharmD
Associate Professor, Regional Coordinator
– Travis AFB, PGY1 Pharmacy Residency
Director – Travis AFB

Sachin A Shah, presented an oral presentation at the American Herbal Products Association on "Oral Aloe Vera for Diabetes and Dyslipidemia" in October 2016 in Las Vegas, Nevada.

Joseph A. Woelfel '70, '72, '78, BS Pharm,
MS, PhD, FASCP, CGP
Associate Professor,
Director of Patient Clinics

"Mobile Medicare Clinics: An ECHO Service Model," American Geriatrics Society 2016 Annual Scientific Meeting, May 20, 2016 in Long Beach, California.

Rajul A. Patel '01, '06, PharmD, PhD,
Professor, Department of Pharmacy Practice

Physical Therapy

Carl L. Fairburn, III '10, DPT
Assistant Professor

Fairburn C.L., **Nesbit K.C., Barrett A. '16, Haga S. '16.** October 2016. California Physical Therapy Association, Annual Conference, Santa Clara, California: "Essential Knowledge and Patient Care Skills for Student Physical Therapists in the Acute Care Setting." Podium Presentation.

Casey Nesbit, PT, DPT, DSc, PCS
Assistant Professor,
Director of Clinical Education

Poster presentation, "A Model of Environmental Correlates of Adolescent Obesity in the United States." Combined Sections Meeting 2016, February 2016, Anaheim, California. Kolobe, T, Sisson, S., Ghement, I.

Poster presentation, "Narrative Reasoning in the Novice Physical Therapist." Combined Sections Meeting 2016, February 2016, Anaheim, California. Randall, K., Hamilton, T.

Poster presentation, "Attitudes of Physical Therapy Students Towards Interprofessional Education." Combined Sections Meeting 2016, February 2016, Anaheim, California. **Oza, P.**

Poster presentation, "A Model of Environmental Correlates of Adolescent Obesity in the United States." National Conference of Health Statistics, August 2015, Bethesda, Maryland. Kolobe, T., Sisson, S., Ghement, I.

Preeti Oza, PT, PhD, NCS
Assistant Professor

Conference Presentation: Preeti Oza and **Casey Nesbit.** "Attitudes of Physical Therapy Students Towards Interprofessional Education." APTA Combined Sections Meeting, Anaheim, California, February 2016.

Conference Presentation: Preeti Oza and **Jessica Tom '18.** "Functional Improvements in a Patient with Spinocerebellar Ataxia After a Year-long Phased Treatment Program." CPTA Annual Conference, Santa Clara, California, October 2016.

Continuing education course: Preeti Oza. "Neuro-imagining for Physical Therapists," August 2016, Kaiser Permanente, Redwood City, California.

Continuing education course: Preeti Oza. "Compassion Inspired Physical Therapy," August 2016, Kaiser Permanente, Redwood City, California.

Continuing education course: Preeti Oza. "Therapeutic Interventions for Individuals with Alzheimer's Disease and Dementia," October 2016, Kaiser Permanente Home Health Conference, Martinez, California.

Cathy Peterson, PT, EdD
Professor

Invited lectures: September 2016. Stockton, California. iHub San Joaquin Leadership Series. A Forum on Stroke Awareness: Stroke's Economic Impact in the Central Valley. Presenter and panelist.

August 2016. Stockton, California. Diamond Care Inc. STROKE: From Recognition to Recovery.

June 2016. Stockton, California. Central Valley Recovery, Awareness, Preventing Strokes. The Anatomy of a Stroke.

May 2016. Santa Rosa, California. Redwood Empire District of the California Physical Therapy Association. Optimizing Exercise Effects on Neuroplasticity to Promote Motor Recovery: A Synopsis of a CSM Presentation by Boyd and Mang; and The Unrelenting Misperceptions of Spasticity and Hypertonicity: A Synopsis of a CSM Presentation by Fisher, Frendewey, and Robinson.

Speech-Language Pathology

Derek Isetti '08, PhD, CCC-SLP
Assistant Professor

Isetti D. "Employer Detection of Spasmodic Dysphonia Across Varying Severity Levels." Poster presentation at the 45th Annual Voice Foundation Symposium, Philadelphia, Pennsylvania, June 2016.

Eadie T.

Isetti, D. "The ADA and Voice Disorders: Practical Guidelines for Clinicians." Poster presentation at the California Speech Hearing Association Conference, Anaheim, California, April 2016.

Isetti, D. "Selecting a Doctoral Program: Returning to School After Clinical Work." Seminar presentation at the Annual Convention of the American Speech-Language-Hearing Association, Denver, Colorado, November 2015.

Yorkston, K., Baylor, C., Eadie, T., Burns, M.

Isetti, D. "Employer Perceptions of a Speaker with Spasmodic Dysphonia During a Simulated Telephone Interview." Technical session presentation at the Annual Convention of the American Speech-Language-Hearing Association, Denver, Colorado, November 2015.

Eadie, T., Baylor, C., Burns, M.

Jeannene Ward-Lonergan, PhD
Professor and Specialty Board
on Child Language Adviser

Gillam, S. Danzak, R., Ward-Lonergan, J.M., & Miliman, L. "Discourse Intervention: Improving Spoken and Written Discourse in School-Age Children and Adults." American Speech Language-Hearing Association Convention, November 2016, Philadelphia, Pennsylvania.

Kaiser, H., Futterman, K., Ward-Lonergan, J.M., Wallach, G., Sandman-Hurley, K., Meyer, T., Depole, L., Fogel Schneider, E, & Catts, H. "Dyslexia Legislation – Implications for Speech-Language Pathologists in California." California Speech-Language-Hearing Association Convention, April 2016, Anaheim, California.

Grants

Audiology

Gabriella Musacchia, PhD
Assistant Professor

Co-principal investigator on a three-year, \$750,000 National Science Foundation research grant: NSF15-532 "Group Brain Dynamics in Learning Network."

Pharmacy Practice

Rajul A. Patel '01, '06, PharmD, PhD
Professor

The Mobile Medicare Clinics received a \$30,000 grant from Kaiser Permanente Northern California Regions under their "Access to Primary and Preventative Care" funding priority.

Edward L. Rogan, PharmD, BCACP
Assistant Professor

Longs Faculty Pharmacy Grant 2015

Physiology and Pharmacology

Carlos A. Villalba-Galea, PhD
Assistant Professor

Carlos Villalba-Galea, PhD, assistant professor of physiology and pharmacology, is a subcontractor for a study entitled, "Structural Determinants of P1P2 Regulation" which received an R01 grant for \$40,000 a year for the next five years. This grant is in collaboration with Dr. Diomedes Logothetis (PI) who is the Chair of the Department of Pharmaceutical Sciences at Northeastern University.

Physical Therapy

Jim Mansoor, PhD
Professor

Jim Mansoor, PhD, professor of physical therapy, has been awarded an NIH grant (R29) in the amount of \$375,000 over two years for his project entitled, "Using Exhaled Breath to Evaluate the Long-term Mechanisms of Early-life Arsenic Exposure." Collaborators on this project are primary investigator (PI) Craig M. Steinmaus, MD, University of California, Berkeley, Edward S. Schelegle, PhD, University of California, Davis (PI) and Cristina E. Davis, PhD, University of California, Davis (Subaward PI).

Physical Therapy

Casey Nesbit, PT, DPT, DSc, PCS
Assistant Professor,
Director of Clinical Education

Nesbit, C. Ruple-Church Grant for International Relations, Committee for Academic Planning and Development, 2015, \$3,000.

Physiology and Pharmacology

Robert F. Halliwell, PhD
Professor

Robert F. Halliwell, PhD, was awarded a mini-grant of \$15,000 from San Joaquin County Behavioral Health Services to develop a small program of education activities in mental health for San Joaquin County. The project entitled "Partnering Pharmacists and Those with Lived Experience of Mental Illness to Enhance Recognition, Early Intervention and Care Capacity in the Wellness." Pharmacy students in the Mental Health Committee and **Ed Rogan**, PharmD, BCACP, will also participate in this project.

Roshanak Rahimian, PharmD, MSc, PhD
Professor

Roshanak Rahimian, PharmD, MSc, PhD, was awarded a R15 grant for \$302,428 from the National Heart, Lung and Blood Institute, National Institutes of Health (NHLBI, NIH). The study entitled "Diabetes, Estrogen and Endothelial Dysfunction" investigates the sexual dimorphism in vascular complications in type 2 diabetes. The collaborators are Dr. Leigh Anderson, Arthur A. Dugoni School of Dentistry and Dr. Peter Havel, University of California, Davis.

Speech-Language Pathology

Derek Isetti '08, PhD, CCC-SLP
Assistant Professor

Pacific SAAG Grant, 2016: Voice Symptoms and Risk Factors among Music Therapists. Funded for \$1,375.

Eric Waldon, PhD, MT-BC, Assistant Professor, Music Therapy, University of the Pacific.

Received the University's Strategic Educational Excellence Development (SEED) funding from the Strategic Investment Fund for his project entitled "Prevention and Screening of Voice Disorders: Providing a Bridge Between Academic Disciplines at Pacific." The project was funded at \$20,521.18 over a two-year period.

Recognitions

Pharmacy Practice

Elaine Law, PharmD, BCPS
Assistant Clinical Professor,
Regional Coordinator – San Jose

Elaine Law, PharmD, BCPS, assistant clinical professor, regional coordinator - San Jose, was named a Fellow of the California Society of Health-System Pharmacists (CSHP) in recognition of her excellence in pharmacy practice.

Mark Walberg '06, '09, PharmD, PhD, CTH
Associate Professor, Regional
Coordinator – San Fernando / Los
Angeles, Immunizations and Travel
Health Elective Track Coordinator

Mark Walberg '06, '09, PharmD, PhD, CTH, was Elected to the Leadership Council of the Pharmacy Professional Group of the International Society of Travel Medicine.

Joseph A. Woelfel '70, '72, '78, BS Pharm, MS, PhD, FASCP, CGP
Associate Professor, Director of Patient
Clinics

Geriatric Board Certification, Commission for Certification in Geriatric Pharmacy. May 1, 2016.

Physical Therapy

Cathy Peterson, PT, EdD
Professor

Cathy Peterson, PT, EdD served on the three-member U.S. regional peer review committee for 2017-18 Fulbright U.S. Scholar applications to Southern Africa.

Service as Seating and Mobility Specialist: Hope Haven Seating Clinics in Ecuador in October 2016, Peru in September 2016 and Vietnam in July 2016.

Joseph Serra, MD
Lecturer

Joseph Serra, MD, was inducted into the Stockton Athletic Hall of Fame on November 18, 2015.

Physiology and Pharmacology

Roshanak Rahimian, PharmD, MSc, PhD
Professor

Roshanak Rahimian, PharmD, MSc, PhD, professor of physiology and pharmacology, was selected as the recipient of the University's 2016 Faculty Research Lecturer Award. This recognizes her record of meritorious research and artistic contributions at the University.

Publications

Audiology

Gabriella Musacchia, PhD
Assistant Professor

Co-authored the research article "Complementary fMRI and EEG Evidence for More Efficient Neural Processing of Rhythmic vs. Unpredictably Timed Sounds," published in the journal *Frontiers in Psychology*, October 2015.

Pharmacy Practice

Eric G. Boyce, PharmD
Professor, Associate Dean
for Academic Affairs

Eric G. Boyce, PharmD is a co-author on the article titled "The 2016 ACCP Pharmacotherapy Didactic Curriculum Toolkit" published in *Pharmacotherapy* in 2016 and its accompany resource guide. This article provides guidance to colleges and schools of pharmacy across the US and beyond on the selection and coverage of pharmacotherapy topics in a doctor of pharmacy curriculum.

Peter Hilsenrath, PhD
Joseph M. Long Chair of Healthcare
Management, Professor of Economics
Li, H., Hilsenrath P. "Organization and Finance of China's Health Sector: Historical Antecedents for Macroeconomic Structural Adjustment" *Inquiry: The Journal of Health Care Organization, Provision, and Financing* 53: 1-8, 2016.

Hilsenrath P. "Precautionary Savings, Health Insurance and Macroeconomic Structural Adjustment in China." *The 6th International Jerusalem Conference on Health Policy*, Jerusalem, Israel, May 2016.

Adam M. Kaye '95, PharmD, FASCP, PCPhA
Clinical Professor, Coordinator
Community I Introductory Pharmacy
Practice Experience Program

Manchikanti L, Kaye AM, Kaye AD. "Current State of Opioid Therapy and Abuse." *Curr Pain Headache Rep.* 2016 May; 20(5): 34. doi: 10.1007/s11916-016-0564-x

Truong H '07, Kaye AM, Kaye AD. "A Synopsis of Epinephrine Products for Dental Emergency Kits." *San Mateo County Dental Society.* 2015. https://www.smcds.com/files/file_442.pdf

Audrey Jade Lee, PharmD, BCPS, FCSHP
Professor, Regional Coordinator
– San Francisco

Lew T, Campbell R, Lee A. "Thromboembolic and Bleeding Outcomes of Veterans from the San Francisco VA Health Care System (SFVAHCS) Treated with Target-specific Oral Anticoagulants

(TSOACS)." 1-019-3801615. Midyear December 2015, New Orleans, Louisiana.

Poon L, Nigro S, Wittkop E. Lee A. "Impact of a Geriatric Pharmacist-Conducted Hospital Discharge Follow-up Program- Focus on Medication Error Management and Prevention," A174. 2015 May Annual Scientific Meeting of the American Geriatrics Society, National Harbor, Maryland.

Edward L. Rogan, PharmD, BCACP
Assistant Professor

Boyce EG, Vyas D, Rogan E, Valle-Oseguera CS '12, O'Dell K. "Impact of Tofacitinib on Patient Outcomes in Rheumatoid Arthritis – Review of Clinical Studies." *Patient Related Outcome Measures.* Volume 2016:7 Pages 1-12.

Sachin A. Shah, PharmD
Associate Professor, Regional Coordinator
– Travis AFB, PGY1 Pharmacy Residency
Director – Travis AFB

Dick WR, Fletcher EA, Shah SA. "Reduction of Fasting Blood Glucose and Hemoglobin A1c Using Oral Aloe Vera: A Meta-Analysis." *J Altern Complement Med.* 2016 June; 22(6):450-7.

Shah SA, Dargush AE, Potts V, Lee M, Millard-Hasting BM, Williams B, Lacey CS. "Effects of Single and Multiple Energy Shots on Blood Pressure and Electrocardiographic Parameters." *Am J Cardiol.* 2016 February 1; 117(3):465-8.

Crawford P, Thai C, Obholz J, Schievenin J, True M, Shah SA, Hallgren J, Clark J, Sharon D. "Assessment of the Effect of Lifestyle Intervention Plus Water-Soluble Cinnamon Extract on Lowering Blood Glucose in Pre-Diabetics, a Randomized, Double-Blind, Multicenter, Placebo Controlled Trial: Study Protocol for a Randomized Controlled Trial." *Trials.* 2016 January 5; 17(1): 9.

Shah SA, **Occiano A '16, Nguyen TA '16, Chan A '16, Sky JC, Bhattacharyya M, O'Dell KM, Shek A, Nguyen NN.** "Electrocardiographic and Blood Pressure Effects of Energy Drinks and Panax Ginseng in Healthy Volunteers: A Randomized Clinical Trial." *American Heart Association-EPI/NPAM, March 2016. and AHA - Scientific Sessions, Nov 2016.*

Cheung M '16, Quach J '15, Chan A '16, Nguyen NN, Shah SA. "Effects of Energy Shots on Blood Pressure in Caffeine-Naive versus Caffeine-Consuming Healthy Volunteers." *Journal of Caffeine Research.*

Kozik TM, Shah S, Bhattacharyya M, Franklin TT, Connolly TF, Chien W, Charos GS, Pelter MM. "Cardiovascular Responses to Energy Drinks in a Healthy Population: The C-energy Study." *Am J Emerg Med.* 2016 July; 34(7): 1205-9.

Shah SA, **Ji Hyun Jamie Lee '15, Frank Son '16, Gloria St John and Narinder Singh Parhar.** "Impact of a Novel Plant-based Treatment Option in Improving Pulmonary Function Markers in Patients with Chronic Obstructive Pulmonary Disease and Asthma." *Research Article Altern Integr Med* 2016, 2: 215.

Shah SA, **Chu BW '15, Lacey CS, Riddock IC, Lee M, Dargush AE.** "The Impact of Acute Energy Drink Consumption on Blood Pressure Parameters: A Meta-analysis." *Ann Pharmacother.* 2016.

Shah SA, **Occiano A '16, Nguyen TA '16, Chan A '16, Sky JC, Bhattacharyya M, O'Dell KM, Shek A, Nguyen NN.** "Electrocardiographic and Blood Pressure Effects of Energy Drinks and Panax Ginseng in Healthy Volunteers: A Randomized Clinical Trial." *Int J Cardiol.* 2016 September 1; 218: 318-23.

Physical Therapy

Casey Nesbit, PT, DPT, DSc, PCS
Assistant Professor,
Director of Clinical Education

Nesbit, K., Randall, K., Hamilton, T. "The Development of Narrative Reasoning: Student Physical Therapists' Perceptions of Patient Stories." *Internet Journal of Allied Health Sciences and Practice, In Press.*

Nesbit, K., Low, J., Sisson, S. "Adolescent BMI Trajectories with Clusters of Physical Activity and Sedentary Behaviors: An Exploratory Analysis." *Obesity Science and Practice, In Press.*

Preeti Oza, PT, PhD, NCS
Assistant Professor

Oza PD, Dudley-Javoroski S, Shields R. "Dynamic Fatigue Does Not Alter Soleus H-reflexes Conditioned by Homonymous or Heteronymous Pathways." *Motor Control* 2016 October 13: 1-27.

Miramonti AA, Jenkins ND, Oza PD, Weir JP, Cramer JT. "Mechanomyographic Responses During Recruitment Curves in the Soleus Muscle." *Muscle Nerve.* 2016 October 8. doi: 10.1002/mus.25432.

Cathy Peterson, PT, EdD
Professor

Co-author of a study published in the *Journal of Anatomy*: "The Expression of Tenascin-C and Tenascin-W in Human Ossicles."

RP Tucker, I Hendaoui, S Bichet, and R Chiquet-Ehrismann

Physiology and Pharmacology

Jesika S. Faridi, PhD
Professor

Jesika S. Faridi, PhD, and her colleagues published a study in the "Cancer Letter" investigating the use of a series of novel agents to increase the efficacy of cancer chemotherapy. This study evaluates novel modulators of ABCG2 multidrug transporters and is entitled, "Pyrimido [1',2":1,5] Pyrazolo [3,4-b] Quinolines: Novel Compounds that Reverse ABCG2-mediated Resistance in Cancer Cells." *cancerletters.info/article/S0304-3835(16)30180-X/pdf*

Malla, R '16

Roshanak Rahimian, PharmD, MSc, PhD
Professor

Abstract was published in FASEB: **Akther F '18, Shaligram S '17, Karimi M, Graham J, Stanhope K, Havel P, Rahimian R.** "Sex-based Differences in the Aortic Function of UCD-T2DM Rats: A Novel Rat Model of Type 2 Diabetes Mellitus." *FASEB* 2016, San Diego, USA. *FASEB J* 2016:30:716.1.

Shaligram S '17, Akther F '18, Karimi M, Graham J, Stanhope K, Havel P, Rahimian R. "Sexual Dimorphism in Mesenteric Arterial Function of a Novel Rat Model of Type 2 Diabetes, UC Davis-Type 2 Diabetes Mellitus (UCD-T2DM)." *FASEB* 2016, San Diego, USA. *FASEB J* 2016; 30: 738.7

Shi, H. Brown, L. M., Rahimian, R. "Sex/Gender Differences in Metabolism and Behavior: Influence of Sex Chromosomes and Hormones." *International Journal of Endocrinology*, 2015, Article ID 245949. DOI: [dx.doi.org/10.1155/2015/245949](https://doi.org/10.1155/2015/245949)

A paper was published by Dr. Rahimian's group. **Han, X. '14, Shaligram, S. '17, Zhang, R '13, Anderson, L., and Rahimian, R.** "Sex-Specific Vascular Responses of the Rat Aorta: Effects of Moderate Term (Intermediate Stage) Streptozotocin-Induced Diabetes." *Canadian Journal of Physiology and Pharmacology*, 2016, 94 (4): 408-415.

Speech-Language Pathology

Larry Boles, PhD
Professor, Graduate Director

Boles, L. (submitted). "Aphasia Couples Therapy: A Conversation-based Practice, 2nd Edition." Invited paper, online continuing education course, Gannett Publishers.

Boles, L., Vento, B., & Mandulak, K. (2015). "Advice on Writing a Successful Graduate School Application." *NSSLHA Now!*, ASHA Publications.

Boles, L. (2015). *Adult Language Disorder. Master Clinician Network.*

Derek Isetti '08, PhD, CCC-SLP
Assistant Professor

Isetti, D. (2015) "Voice Disorders in the Workplace: A Clinician's Primer." *The Voice: Newsletter of the Voice Foundation, Vol 20* (4).

Isetti, D., Eadie, T. (2015) "The Americans with Disabilities Act and Voice Disorders: Practical Guidelines for Voice Clinicians." *Journal of Voice, [accepted Epub ahead of print]*

Jeannene Ward -Lonerger, PhD
Professor and Specialty Board
on Child Language Adviser

Ward-Lonerger, J.M. & **Duthie, J.K.** (2016). "Intervention to Improve Expository Reading Comprehension Skills in Older Children and Adolescents with Language Disorders." *Topics in Language Disorders*, 36, 52-64.

Faculty and Staff

New Faces, Tenure & Promotions

July 1, 2015 to June 30, 2016

Aunyporn "Gail" Amornponghai, AuD was hired as assistant clinical professor of audiology and audiology clinic director, Stockton, non-tenure track.

Ellie Benton was promoted to evaluation specialist, Office of Pharmacy Admission.

Anne Marie H. Bergthold was hired as copywriter, Office of External Relations.

Nicholaus Brock '11, '12, MS, CCC-SLP was hired as assistant clinical professor of speech-language pathology and director of the Stockton Scottish Rite Childhood Language Disorders Center, non-tenure track.

Ron Espejo was promoted to recruitment and outreach manager, Office of External Relations.

Suzanne Galal, PharmD was promoted to associate professor of pharmacy practice with tenure.

Jacquelyn Georgeson, AuD was hired as assistant clinical professor of audiology, tenure track.

Jiong Hu, PhD was hired as assistant professor of audiology, tenure track.

Derek Isetti '08, PhD, CCC-SLP was hired as assistant professor of speech-language pathology, tenure track.

Marta Kebede was hired as audiology clinic services assistant, Pacific Hearing and Balance Center, San Francisco.

Elaine Law, PharmD, BCPS, FCSHP was hired as assistant clinical professor of pharmacy practice and regional coordinator, San Jose region, non-tenure track.

Shu-En Lim, AuD, CCC-A was hired as assistant clinical professor of audiology, non-tenure track.

Yvonne Mai '13, PharmD was hired as assistant clinical professor of pharmacy practice and regional coordinator, Stockton region, tenure track.

Gabriella Musacchia, PhD was hired as assistant professor of audiology, tenure track.

Nancy Nguyen, PharmD, BCPS, AAHVP, FCSHP was promoted to clinical professor of pharmacy practice.

Kate O'Dell, PharmD, BCPS was promoted to professor of pharmacy practice.

Becky Perry '01, '09, was hired as alumni relations coordinator, Office of External Relations.

Christopher Pham '15, PharmD was hired as fellow and lecturer, non-tenure track.

Carly Ranson '13, PharmD was hired as fellow and lecturer, non-tenure track.

Benjamin Reece '01, '08, MA, CCC-SLP was hired as assistant clinical professor of speech-language pathology, non-tenure track.

Michon Rinehart was hired as administrative assistant II, Office of Professional Programs.

Erica Ruiz '12 was hired as administrative assistant II/residency and fellowship career development, Office of Pre-Pharmacy and Pre-Health Affairs.

Veronica Semler was promoted to director of pharmacy admission, Office of Pharmacy Admission.

Eric Shepherd was hired as professional program specialist, Office of Professional Programs.

Carmen Simmons was hired as administrative assistant II, Office of Student Affairs and Organizations.

Mark Walberg '06, '09, PharmD, PhD was promoted to associate professor of pharmacy practice with tenure.

Susan Webster was promoted to director of development, Office of External Relations.

Kim Whitesides was hired as administrative assistant II, Office of Pre-Pharmacy and Pre-Health Affairs and Office of Pharmacy Admission.

Clifford Young, RPh, CGP was promoted to associate clinical professor of pharmacy practice.

Years of Service

30 Years

Robert E. Hanyak '79, AuD, associate professor, department chair, Department of Speech-Language Pathology and Audiology

William A. Kehoe, MA, PharmD, FCCP, BCPS, professor, department chair, Department of Pharmacy Practice; director of the Office of Academic Success and Instructional Support

25 Years

Denis J. Meerdink, PhD, associate professor, Department of Physiology and Pharmacology; associate dean for Student Affairs and Organizations

15 Years

Nancy DeGuire '89, PharmD, FACA, associate clinical professor, Department of Pharmacy Practice; associate dean for external relations, director for postgraduate professional education, Office of External Relations

Eileen DeMaggio, administrative assistant II, Department of Pharmacy Practice

Bhaskara R. Jasti, MPharm, PhD, professor, Department of Pharmaceutics and Medicinal Chemistry

Kathy Kassab, program services assistant, Pharmaceutical and Chemical Sciences Graduate Program

Marcus C. Ravnan '94, PharmD, FCSHP, FASHP, professor, Department of Pharmacy Practice; assistant dean, Office of Pre-Pharmacy and Pre-Health Affairs

David Thomas, PhD, associate professor, Department of Physiology and Pharmacology

James A. Uchizono, PharmD, PhD, professor, Department of Pharmaceutics and Medicinal Chemistry; associate provost of research, interim dean of graduate studies

10 Years

Kristen Hernandez, administrative assistant II, Department of Speech-Language Pathology and Audiology

Timothy Johnson, technical support specialist II lead, Department of Pharmacy and Health Sciences Support Office

Rajul Patel '01, '06, PharmD, PhD, professor, Department of Pharmacy Practice

Wade A. Russu, PhD, associate professor, Department of Pharmaceutics and Medicinal Chemistry

Joseph Woelfel '70, '72, '78, BS, MS, PhD, RPh, FASCP, associate professor, Department of Pharmacy Practice

5 Years

Mamoun M. Alhamadsheh, PhD, associate professor, Department of Pharmaceutics and Medicinal Chemistry

Larry Boles, PhD, CCC-SLP, professor, Department of Speech-Language Pathology and Audiology

January Foronda, program assessment specialist, Office of Academic Affairs



Howell "Howie" Runion '56, PhD, was born in Ann Arbor, Michigan in 1933. His childhood was spent in Orono, Maine until 1947 when his family moved to Stockton. His father, **Howard L. Runion**, PhD, played a crucial role in the development of the speech-language pathology program at Pacific and became department chair in 1948.

Dr. Runion joined the United States Marine Corps in 1952, where he earned the rank of Captain. Active duty took him to Japan and the Philippines, followed by nine years in the reserves. He attended Pacific where he earned a bachelor of science in chemistry in 1956 and a teaching credential in 1960. "As an educator he treasured knowledge and was always

curious," said **Dianne La Rue '76**, PharmD, friend of Dr. Runion. He earned a master of science in biology from University of Oregon in 1963 and his doctor of philosophy in electrophysiology from University of Glasgow in 1968.

Before joining the Pacific faculty in 1969, he taught biology at Stockton's Lincoln Elementary School and later became chair of the science department at Lincoln High School. Later in life, he earned a degree as a physician assistant (PA) from Stanford University and practiced neurology as a PA for 15 years.

Dr. Runion taught at Pacific for 34 years, during which time he pioneered the electropharmacology curriculum and established a research lab. "In all of his professional endeavors, he brought honor and recognition to Pacific," shared **Dean Phillip Oppenheimer**, PharmD. "Howie had his personal foundation built at Pacific through the example of his father, another distinguished Pacific faculty member, and as an undergraduate at Pacific."

"[He was] very supportive and kind toward his students, his fellow faculty and staff," said colleague **Roshanak Rahimian**, PharmD, MSc, PhD. "I admired his sense of humor and his willingness to help others." He received two Outstanding Educator of America awards and was awarded the Order of Pacific, the University's highest honor. "He was not just a professor, but a friend and mentor who was always available when you had a question," shared former student **Richard "Rick" Skidmore '82**, PharmD. "His legacy is that he taught us to not just survive, but to participate and thrive, and to do so passionately."

Dr. Runion was an avid photographer. Dr. La Rue shared, "He was a keen observer of nature and especially people, all people; his family, his students and the people at Trader Joe's where he shopped. He delighted in taking their picture, framing it and giving it to them. It was a way of always making you feel you were noticed and important."

He was a member of a number of professional societies including Phi Kappa Phi and the Rho Chi Honor Society. After retiring, he stayed closely connected to the University through his involvement in the Emeriti Society and the Osher Lifelong Learning Institute.

Lorne Bonkowski '71, '73, RPh, was Dr. Runion's close friend and his first graduate student. "Whether he was building an insect cage at the lab or a boat or a harpsichord in his garage, Howie was always making things," Bonkowski said. "His ingenuity to use ordinary things in extraordinary ways taught me to look for that wonderful potential too."

"In all of his professional endeavors, he brought honor and recognition to Pacific."

2017 Calendar of Events

February

- 15-18** **Combined Sections Meeting (CSM)**
San Antonio, Texas • apta.org
- 16** **Pacific Physical Therapy Alumni and Friends Reception at CSM**
6:30 - 8 p.m. • Margaritaville • San Antonio, Texas
bit.ly/ptcsm_021617
- 23-26** **California Pharmacists Association (CPhA) West Coast Pharmacy Exchange**
Palm Springs, Calif. • cpha.com
- 25** **Pacific Pharmacy Alumni Association Alumni and Friends Breakfast at CPhA**
Renaissance Hotel • Palm Springs, Calif.
bit.ly/cpha_022517

March

- 16-19** **California Speech-Language-Hearing Association (CSHA) Annual State Convention**
Pasadena Convention Center • Pasadena, Calif. • csha.org
- 18** **Pacific Speech-Language Pathology Alumni and Friends Breakfast at CSHA**
7 - 8:15 a.m. • Sheraton Pasadena Hotel, Piazza Room
Pasadena, Calif. • bit.ly/cshabreakfast_031817
- 24-27** **American Pharmacists Association (APhA) Annual Meeting and Exposition**
San Francisco, Calif. • aphameeting.org
- TBD** **American Pharmacists Association (APhA) California Schools Reception**
San Francisco, Calif. • pacificpahsalum.org
- TBD** **Doctor of Physical Therapy Candidacy Luncheon**
12 p.m. • Location TBD • pacificpahsalum.org

April

- 21-23** **29th Annual New Drugs and Modern Concepts in Pharmacotherapy**
Hotel Kabuki • San Francisco, Calif. • newdrugsce.com

May

- 19** **Thomas J. Long School of Pharmacy and Health Sciences Graduation Banquets**
6 p.m. • University of the Pacific • Stockton, Calif.
pacificpahsalum.org
- 20** **Thomas J. Long School of Pharmacy and Health Sciences Commencement Ceremony**
9 a.m. • A.G. Spanos Center, University of the Pacific
Stockton, Calif. • phscommencement.com

July

- 15-19** **American Association of Colleges of Pharmacy (AACP) Annual Meeting and Seminars**
Gaylord Opryland Resort & Convention Center
Nashville, Tenn. • aacp.org
- TBD** **Pharmacy Scholarship Ceremony**
4 p.m. • Thomas J. Long School of Pharmacy and Health Sciences • Stockton, Calif.

September

- 1** **Physical Therapy White Coat Ceremony**
6 p.m. • DeRosa University Center, Ballroom
Stockton, Calif. • pacificpahsalum.org
- 6** **Speech-Language Pathology Welcome Back Dinner**
5 p.m. • Thomas J. Long School of Pharmacy and Health Sciences • Stockton, Calif.
- 9** **Pharmacy White Coat Ceremony**
9 a.m. • University of the Pacific • Stockton, Calif.
- 11** **Audiology White Coat Ceremony**
University of the Pacific • San Francisco, Calif.
pacificpahsalum.org
- 16-17** **California Physical Therapy Association (CPTA) Annual Conference**
San Diego Convention Center • San Diego, Calif • ccapta.org
- 27** **Pacific Pharmacy Alumni Association Alumni and Friends San Diego Regional Reception**
pacificpahsalum.org

October

- 13-15** **Pacific Homecoming**
University of the Pacific • Stockton, Calif. • pacificalumni.org
- 14-18** **National Community Pharmacists Association (NCPA) Annual Convention and Trade Exposition**
Orlando, Fla. • ncpa.net.org
- 26-29** **California Society of Health-System Pharmacists (CSHP) Seminar**
Paris and Bally's Hotels • Las Vegas, Nev. • cshp.org
- 30** **Pacific Pharmacy Alumni Association Alumni and Friends Reception at CSHP**
Las Vegas, Nev. • pacificpahsalum.org
- 30** **Pharmacy Employer Showcase**
9 a.m. - 1 p.m. • DeRosa University Center Ballroom
University of the Pacific • Stockton, Calif. • pacific.edu/phs

November

- 1** **Speech-Language Pathology Employer Showcase**
DeRosa University Center Ballroom
University of the Pacific • Stockton, Calif. • pacific.edu/phs
- 1** **Physical Therapy Employer Showcase**
DeRosa University Center Ballroom
University of the Pacific • Stockton, Calif. • pacific.edu/phs

December

- 3-7** **American Society of Health-System Pharmacists (ASHP) Midyear Meeting**
Orange County Convention Center • Orlando, Fla. • ashp.org
- 4** **Pacific Pharmacy Alumni Association Alumni and Friends Reception at ASHP**
Orlando, Fla. • pacificpahsalum.org

Learn more about these events at pacificpahsalum.org

To receive reminders by email please update your contact information by emailing Jen Flora at jflora@pacific.edu



Above: Doctor of audiology students attend the program's second annual White Coat Ceremony held at Pacific's San Francisco Campus.

Front Cover: California Scottish Rite Foundation board member John Baker (left) and Dr. Hanyak stand in front of the Scottish Rite Childhood Language Disorders Center.

Back Cover: The doctor of pharmacy program was awarded a full 8-year accreditation from ACPE.

Connect with us:

-  For email updates contact jflora@pacific.edu
-  www.facebook.com/PacificPaHSAAlumni
-  [@PacificPaHSAAlum](https://twitter.com/PacificPaHSAAlum)
-  pacificpahsalum.org



The doctor of pharmacy (PharmD) program has received a full 8-year accreditation from the Accreditation Council for Pharmacy Education (ACPE).

Recently, the ACPE implemented a longer term for a full accreditation, moving from six years to eight years. In addition, they now require a much more rigorous self-study. This notable accomplishment speaks to the hard work of all who contributed.

THANK YOU to all of the **faculty, students, staff, administrators, partners, donors** and **alumni** who played a part in the accreditation process.

"I wish to thank and congratulate everyone who was involved for your dedication and excellent work on the School's behalf. Thank you for your consistent productivity in maintaining our reputation of excellence and innovation. I could not be more pleased with this outcome and each of you should feel a great sense of pride."

- Dean Phillip Oppenheimer