

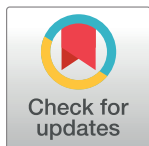
RESEARCH ARTICLE

Association of rodent-borne *Leptospira* spp. with urban environments in Malaysian Borneo

Kim R. Blasdell¹, Serge Morand^{2,3,4}, David Perera⁵, Cadhla Firth^{6*}

1 Health and Biosecurity Business Unit, Commonwealth Scientific and Industrial Research Organisation, Geelong, Victoria, Australia, **2** Animals, Health, Territories, Risks and Ecosystems, French Agricultural Research Centre for International Development, Montpellier, France, **3** Institut des Sciences de l'Evolution de Montpellier, National Center for Scientific Research, Montpellier University, Montpellier, France, **4** Faculty of Veterinary Technology, Kasetsart University, Bangkok, Thailand, **5** The Institute of Health and Community Medicine, Universiti Malaysia Sarawak, Kota Samarahan, Sarawak, Malaysia, **6** School of BioSciences, The University of Melbourne, Parkville, Victoria, Australia

* cadhla.firth@gmail.com


 OPEN ACCESS

Citation: Blasdell KR, Morand S, Perera D, Firth C (2019) Association of rodent-borne *Leptospira* spp. with urban environments in Malaysian Borneo. *PLoS Negl Trop Dis* 13(2): e0007141. <https://doi.org/10.1371/journal.pntd.0007141>

Editor: Mathieu Picardeau, Institut Pasteur, FRANCE

Received: June 25, 2018

Accepted: January 8, 2019

Published: February 27, 2019

Copyright: © 2019 Blasdell et al. This is an open access article distributed under the terms of the [Creative Commons Attribution License](https://creativecommons.org/licenses/by/4.0/), which permits unrestricted use, distribution, and reproduction in any medium, provided the original author and source are credited.

Data Availability Statement: All relevant data are within the paper and its Supporting Information files.

Funding: This study was supported by a Discovery Early Career Researcher Award to CF from the Australian Research Council (DE150101259). The funders had no role in study design, data collection and analysis, decision to publish, or preparation of the manuscript.

Competing interests: The authors have declared that no competing interests exist.

Abstract

Although leptospirosis is traditionally considered a disease of rural, agricultural and flooded environments, *Leptospira* spp. are found in a range of habitats and infect numerous host species, with rodents among the most significant reservoirs and vectors. To explore the local ecology of *Leptospira* spp. in a city experiencing rapid urbanization, we assessed *Leptospira* prevalence in rodents from three locations in Malaysian Borneo with differing levels of anthropogenic influence: 1) high but stable influence (urban); 2) moderate yet increasing (developing); and 3) low (rural). A total of 116 urban, 122 developing and 78 rural rodents were sampled, with the majority of individuals assigned to either the *Rattus rattus* lineage R3 ($n = 165$) or *Sundamys muelleri* ($n = 100$). *Leptospira* spp. DNA was detected in 31.6% of all rodents, with more urban rodents positive (44.8%), than developing (32.0%) or rural rodents (28.1%), and these differences were statistically significant. The majority of positive samples were identified by sequence comparison to belong to known human pathogens *L. interrogans* ($n = 57$) and *L. borgpetersenii* ($n = 38$). Statistical analyses revealed that both *Leptospira* species occurred more commonly at sites with higher anthropogenic influence, particularly those with a combination of commercial and residential activity, while *L. interrogans* infection was also associated with low forest cover, and *L. borgpetersenii* was more likely to be identified at sites without natural bodies of water. This study suggests that some features associated with urbanization may promote the circulation of *Leptospira* spp., resulting in a potential public health risk in cities that may be substantially underestimated.

Author summary

Leptospirosis is a significant zoonotic disease that is found in a range of environments worldwide, most notably tropical regions prone to flooding. The bacterial agents of this disease, *Leptospira* spp., are most often associated with rodents, including species

frequently found in urban areas. In cities, rodent populations are often larger and denser than those found in natural environments, which can lead to higher rates of contact with people and impact human disease risk. To investigate the impacts of urbanization on *Leptospira* spp., we sampled rodents at locations with differing levels of human influence, from highly urbanized to rural, surrounding a city in Malaysian Borneo. We found that 31.6% of all rodents were positive for *Leptospira* spp. DNA, and that two primary species were present, *L. interrogans* and *L. borgpetersenii*, both of which are known human pathogens. Statistical analyses revealed that infected animals were more common in areas with higher levels of human influence, and were more likely to occur at sites with limited forest cover, and mixed commercial and residential activity. Our study adds to a growing body of evidence suggesting that there is a significant yet underappreciated risk of leptospirosis for people living in urban environments.

Introduction

Leptospirosis is the most widespread zoonotic disease globally, with over a million cases of severe disease and around 60,000 deaths reported annually [1]. Occurring in a wide variety of environmental settings, and with the greatest impact on public health in tropical and subtropical regions, it is a significantly under-diagnosed disease due to its broad clinical picture and symptoms that are common to several other diseases [2]. Leptospirosis is caused by spirochaetes of the genus *Leptospira*, of which 22 species and >300 serovars are currently recognized. Ten species have been definitively associated with severe human disease, whilst a further five have been linked to milder disease [3]. In addition, 12 novel species have recently been identified from tropical soils, although none have yet been associated with disease [4].

Human infection with *Leptospira* spp. occurs via several routes, including through direct contact with urine or tissues from infected animals, or indirectly through contamination of (usually humid) environments with infected urine. The two species responsible for the majority of human infections, *L. interrogans* and *L. borgpetersenii*, differ in their transmission routes; *L. interrogans* remains viable for extended periods in aquatic or humid environments, whilst *L. borgpetersenii*, which has lost several genes related to environmental sensing, now relies primarily on direct transmission between hosts [5]. These differences impact the ability of each species to persist in the environment and have led to differences in distribution and zoonotic potential [6]. As such, whilst exposure to wetlands has traditionally been considered a significant risk factor for this disease, *Leptospira* spp. have been detected in a number of environments, including cities [7–10]. Although relatively little is known about the ecology and epidemiology of *Leptospira* spp. in urban environments, zoonotic transmission has been repeatedly documented and often associated with poor sanitation and slum conditions [11–14].

By 2050, 66% of the global human population is predicted to reside in urban environments and as such, the majority of human-wildlife interactions are likely to occur in these areas [15]. Critically, features of the urban environment can impact disease dynamics in wildlife hosts and increase the frequency of human exposure to zoonotic pathogens. Indeed, *Leptospira* spp., infection prevalence has been found to be higher in wildlife occupying urban habitats than natural environments, and this trend appears to be particularly significant for rodents [16]. Several species of rodent, including *Rattus norvegicus*, *R. rattus* and *R. exulans*, appear to benefit from urbanization and thrive in city environments, resulting in regular human exposure to these species and their excreta [17,18]. Despite the obvious risks posed by urban rodent

infestation, the distribution, prevalence, diversity and dynamics of *Leptospira* spp. in urban populations remains largely unknown, impacting the ability of local authorities to develop effective prevention and control strategies.

In Southeast Asia, the number of reported cases and outbreaks of leptospirosis has increased dramatically in recent years, due in part to improvements in diagnosis and surveillance, but also as a result of the rapid environmental changes occurring in this region [19–21]. At least six zoonotic species have been detected in Southeast Asian rodents to date: *L. borgpetersenii*, *L. interrogans*, *L. kirschneri*, *L. weilli*, *L. noguchii* and *L. wolffii* [6,22]. In Malaysia, the annual number of reported cases increased more than 14-fold between 2004 and 2012, which led to the classification of leptospirosis as a mandatory notifiable disease at the end of 2010 [23]. Although many recent Malaysian outbreaks have been associated with outdoor recreational activities, human infections have also been documented in urban environments [24]. Some studies have begun to assess the prevalence of *Leptospira* spp. in urban reservoir species in Southeast Asia [22,25]), but none have yet compared how distribution and transmission varies with the degree of anthropogenic influence across an urban landscape. In this study, we screened native and invasive rodents found in urban, developing and rural locations around the city of Kuching, Sarawak for *Leptospira* spp., to begin to explore how urbanization effects the presence and prevalence of *Leptospira* in Malaysian Borneo.

Materials and methods

Ethics statement

This study was approved by the CSIRO Australian Animal Health Laboratory's Animal Ethics Committee (#1750) and the Sarawak Forests Department (Permit: NCCD.907.4.4 (JLD.12)-131).

Study locations

Urban location “Central Kuching”. Central Kuching is a highly urbanized area comprising a mix of residential and commercial buildings, interspersed with vacant lots and parks. Forest covers approximately 7% of this location and impervious surfaces dominate the landscape (see section on site environmental analysis for details). The Sarawak River flows east to west through the city, with the majority of the city to the south of the river. Due to the high anthropogenic influence in this location, the opportunities for interaction between people and rodents is high. Thirteen sites were sampled at this location, with 3 located north of the river and the remainder to the south (Fig 1).

Developing location “Batu Kawa district”. Batu Kawa is a rapidly urbanizing district ~8.5 km to the west of the Central Kuching location. Batu Kawa district contains a mix of residential, commercial and industrial properties, with large tracts of undeveloped, but often highly disturbed, vegetation and is approximately 39% forested. The Sarawak River runs north to south between the original township of Batu Kawa to the west and the newer developments to the east, where the intensity of development is higher (Fig 1). The anthropogenic influence at most sites in this location is high, providing ample opportunities for human-rodent interactions. Of the 14 sites sampled at this location, 9 were located to the east of the river with the remainder around the original township (Fig 1).

Rural location “Mount Singai region”. This rural region consists of a number of villages encircling Mount Singai, approximately 22.5km west of the Central Kuching location. The intensity of development is low, with residences consisting of a combination of traditional and modern buildings, surrounded by small adjacent rice fields and modest subsistence farms. The villages are primarily dispersed and separated by tracts of disturbed forest and scrub. Mean

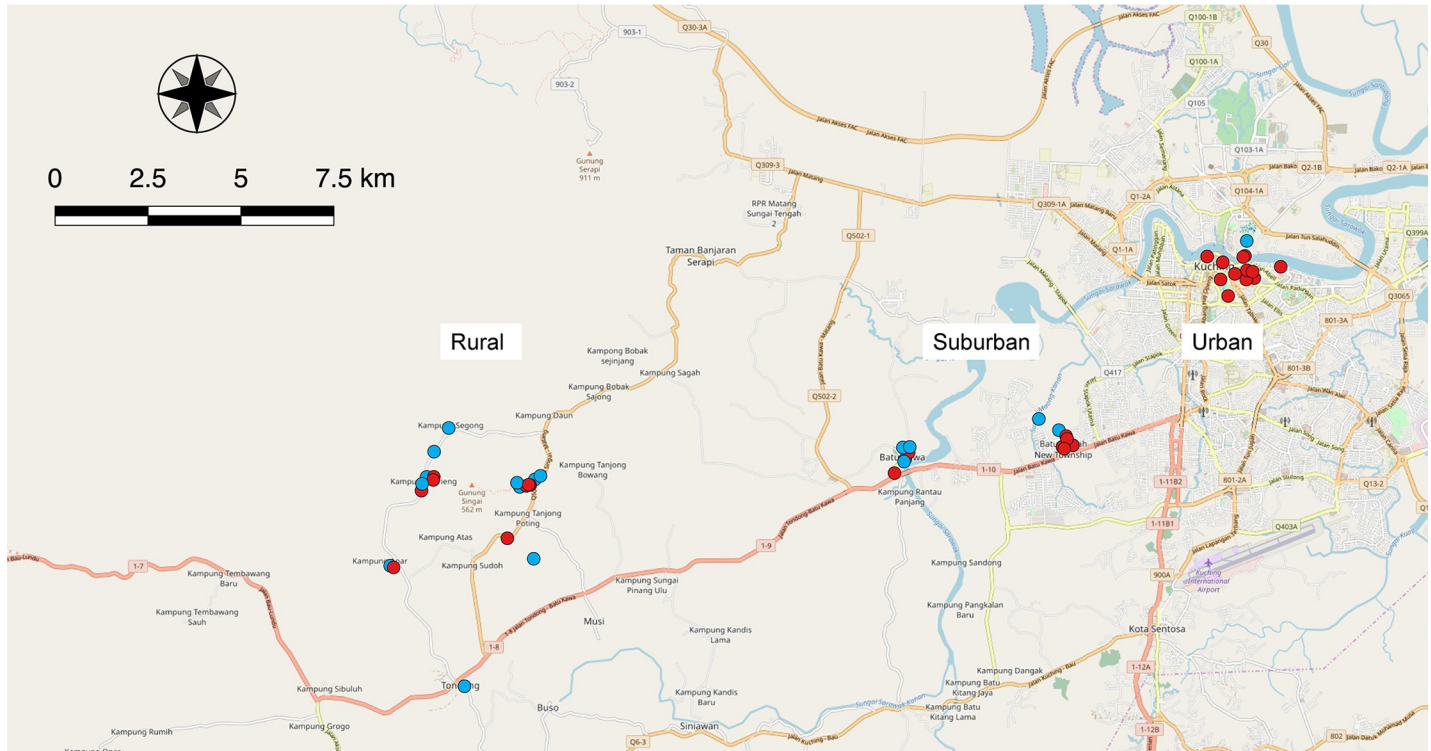


Fig 1. Sites of rodent collection. From left-to-right: rural (Mount Singai region), developing (Batu Kawa district), and urban (Central Kuching) locations are shown. Red dots indicate sites with rodents that were *Leptospira* spp. positive; blue dots indicate sites where no *Leptospira* spp. was detected. Map data sourced from OpenStreetMap.

<https://doi.org/10.1371/journal.pntd.0007141.g001>

forest cover is highest at this location at 81%, and green space dominates the landscape. The anthropogenic influence in this location is variable, with greater opportunities for human-rodent interactions in the villages than vegetated areas, although residents frequently engage in foraging and hunting activities. A total of 19 sites were sampled at this location (Fig 1).

Site environmental analysis

For this study, sites were considered to be a circle with a 110 m radius centered at the point where GPS coordinates were taken during rodent trapping. All site-specific environmental variables were measured or estimated over the complete circle. The 110 m radius was chosen to correspond with the approximate home range of *R. rattus* that has been estimated under similar environmental conditions [26]. As home range data is not available for the other rodent species studied, we used the *R. rattus* estimate to delineate sites throughout the study.

To classify the degree of urbanization and the intensity of anthropogenic influence at each site, the following estimates of land use were considered: 1) Mean forest cover was estimated using QGIS v 2.14.0 and previously published forest cover and loss datasets at the Landsat pixel scale. Mean estimates were ranked and grouped into tertiles, which were categorized as minimal, moderate or maximal forest cover (<https://earthenginepartners.appspot.com/science-2013-global-forest>) [21]. 2) Dominant land-cover type (gray, green or gray/green interface) was determined by assessing the proportion of vegetated (forest, scrub, etc.) or impervious (buildings, roads, etc.) space within and around each site using QGIS (as above) and ground-truthing. Gray sites were considered to be completely within and primarily surrounded by human infrastructure, green sites were those dominated by unmanaged

vegetation, gray interface sites were within human infrastructure but adjacent to substantial vegetation, and green interface sites were within managed/unkept vegetation and adjacent to human infrastructure. Other site-specific environmental features recorded included the presence or absence of a natural water body at a site, and the local environment in which individual rodents were caught, referred to as ‘trap location’. Trap locations were recorded as: 1) inside domestic dwellings, 2) household gardens and yards, 3) forests, 4) sewers, and 5) scrub (areas of vegetation dominated by unkept bushes and grasses). Where buildings were present at a site, the relative condition (i.e., poor, fair, good, excellent) and type of building(s) (i.e., residential, mixed commercial/residential, institutional) were also recorded.

Rodent sampling and speciation

Rodents were collected from multiple sites between September 2015 and April 2016 at each of the three locations described above. At each site, multiple wire mesh traps (~30cm x 14cm) were baited with meat and banana, placed at intervals >1m for between one and seven nights, and checked every morning. Trapping effort varied substantially between sites in an effort to collect equal numbers of animals/species/location. Rodents were euthanized by over-anesthetization in isoflurane, followed by bilateral thoracotomy. Sex, reproductive status, weight (as a proxy for age) and tentative species assignment (by morphological assessment) were recorded, and tissues were collected and frozen directly on dry ice. The species identity of each animal was confirmed by sequencing the product of a PCR assay using primers BatL5310 and R6036R, which amplify 726bp of the *cytochrome oxidase I* gene [27].

Detection of *Leptospira* DNA

Approximately 30mg of rodent kidney was homogenized in 600ml of Buffer RLT Plus (Qiagen) containing 1% β -mercaptoethanol using the TissueLyser II (Qiagen), and a 5mm stainless steel bead. Homogenized tissue was clarified by centrifugation and the resultant supernatant transferred to a new tube and used for DNA extraction with the AllPrep DNA/RNA mini Kit (Qiagen), as per the manufacturer’s instructions. DNA quantity and quality were assessed using a NanoDrop (Thermo Scientific), diluted to <400ng/ul, and subjected to six previously described PCR assays targeting the *rpoB*, *flaB* and 16S rRNA genes [28–34]. Multiple PCR assays were chosen to maximize the probability of detecting any and all *Leptospira* spp. DNA present, including both pathogenic and non-pathogenic species. Samples were considered positive if they produced a visible band on an electrophoresis gel that could be confirmed as *Leptospira* spp. by Sanger sequencing (conventional PCRs), or if they demonstrated a Ct value of 35 or lower by *Leptospira*-specific TaqMan PCR. The resultant sequences (S1 Appendix) were trimmed for quality and length and subjected to BLAST (<http://blast.ncbi.nlm.nih.gov/Blast.cgi>) analysis to assess sequence similarity and determine putative species [3]. Sequences were considered to belong to a species if they shared $\geq 99\%$ nucleotide similarity with publicly available sequences from verified species.

Statistical analyses

Statistical analyses were conducted for all *Leptospira* spp., as well as for *L. interrogans* and *L. borgpetersenii* separately, due to documented differences in transmission routes [5]. We further considered all rodent hosts collectively to avoid conflating *Leptospira* ecology with rodent ecology, as no evidence exists at present to suggest that these rodent species differ in competence [6]. Chi squared tests were used to assess differences in *Leptospira* prevalence in rodents between all three locations (i.e., urban, developing, and rural), as well as between each pair of locations.

To interrogate the relationships between site-specific environmental variables, the GoodmanKruskal package (version 0.01) implemented in R was used to run Goodman and Kruskal's tau (τ) statistic (<https://CRAN.R-project.org/package=GoodmanKruskal>) [35]. This test measures the strength of associations between categorical data, with values ranging from -1 (perfectly negative association) to $+1$ (perfectly positive association). A multivariate analysis of mixed data was also performed using the package PCAmixdata (version 3.1) implemented in R [36].

To examine links between the probability of *Leptospira* infection of rodents and site-specific environmental variables, a generalized linear (mixed) model (GLMM or GLM) with logit function was created using the lme4 package implemented in R (version 1.1–15) [37]. Analyses were performed using two initial models with explanatory variables chosen according to the strength of association identified in the Goodman and Kruskal's tau statistics, and the results of the multivariate analysis. The first model (a GLMM, henceforth referred to as the global model), included the following explanatory variables: site location, trap location, forest cover, dominant land-cover type and waterbody, with no interactions added among independent variables and rodent species as a random effect. The second model (a GLM, referred to as the built environment model) was intended to investigate aspects of the built environment that may be relevant to *Leptospira* prevalence, and included site location, trap location, building type and building condition, with no interactions among them. Only the infection status of rodents trapped in sites with buildings present were included in this model. Support for competing models was evaluated using the Akaike information criterion adjusted for small sample sizes (AICc) in the package AICcmodavg (version 2.1–1), and Akaike weights w_r [38]. Selection of the best models was made using the R package glmulti (version 1.0.7) [39]. The three top best models selected for the global and built environment modes are given in [S2 Appendix](#) and [S3 Appendix](#), respectively.

Results

A total of 316 animals were caught across all locations. Of these, nine species from four genera were identified by COI sequence analysis, with most individuals classified as *S. muelleri* ($n = 100$ individuals) or as *R. rattus* R3 ($n = 165$), one of the lineages within the *R. rattus* super-group ([Table 1](#)) [40,41]. A total of 31.6% of all animals were positive for *Leptospira* spp., and *Leptospira* spp. prevalence varied significantly by site location, with rodents from urban and developing locations more likely to be infected than rural rodents ([Fig 2](#); [S2 Appendix](#)).

Sequence analysis revealed the presence of two distinct *Leptospira* species: *L. borgpetersenii* and *L. interrogans*. *L. borgpetersenii* was identified in 38 rodents (six *S. muelleri* and 32 *Rattus* spp.), whilst *L. interrogans* was identified from 57 rodents, comprising *Maxomys ochraceiventris* ($N = 1$), *M. whiteheadii* ($N = 1$), *S. muelleri* ($N = 15$), and *Rattus* spp. ($N = 40$). Sequence information could not be obtained from five samples, which were positive only by a qPCR assay that yielded amplicons too small to sequence [34].

Goodman and Kruskal's τ and our multivariate analysis showed moderate positive associations between pairs of environmental variables, but as all values were <0.60 , they were not considered to be fully redundant in this case ([S3 Appendix](#)) ([Fig 3](#)). As a result, no variables were excluded from the subsequent analyses. Of the variables considered in the global GLMM, trap location, forest cover, dominant land-cover type and water body were each important in explaining the infection of rodents with *Leptospira* ([S4 Appendix](#)). Significant associations were identified in the first top model between infection with any *Leptospira* species and sites characterized by minimal forest cover ($P = 0.001$), and the absence of natural water bodies

Table 1. Proportion of *Leptospira* spp. positive rodents by location and species.

Species	N positive/N tested (%)			Total
	Rural	Developing	Urban	
<i>R. rattus</i> R3*	3/30 (10.0)	29/61 (47.5)	38/74 (51.4)	70/165 (42.4)
<i>R. tanezumi</i> *	-	2/6 (33.3)	1/5 (20.0)	3/11 (27.3)
<i>R. tiomanicus</i> *	-	2/8 (25.0)	-	2/8 (12.5)
<i>R. exulans</i>	0/2 (0)	0/1 (0)	-	0/3 (0)
<i>S. muelleri</i>	4/22 (18.2)	6/41 (14.6)	13/37 (35.1)	23/100 (23.0)
<i>Maxomys ochraceiventer</i>	1/2 (50.0)	-	-	1/2 (50.0)
<i>M. whiteheadii</i>	1/11 (9.1)	0/1(0)	-	1/12 (8.3)
<i>Niviventer cremoriventer</i>	0/10 (0)	0/4 (0)	-	5/14 (7.1)
<i>N. sp.</i>	0/1 (0)	-	-	0/1 (0)
Total	9/78 (11.5)	39/122 (32.0)	52 /116 (44.8)	100/316 (31.6)

*Member of the *R. rattus* super-group

<https://doi.org/10.1371/journal.pntd.0007141.t001>

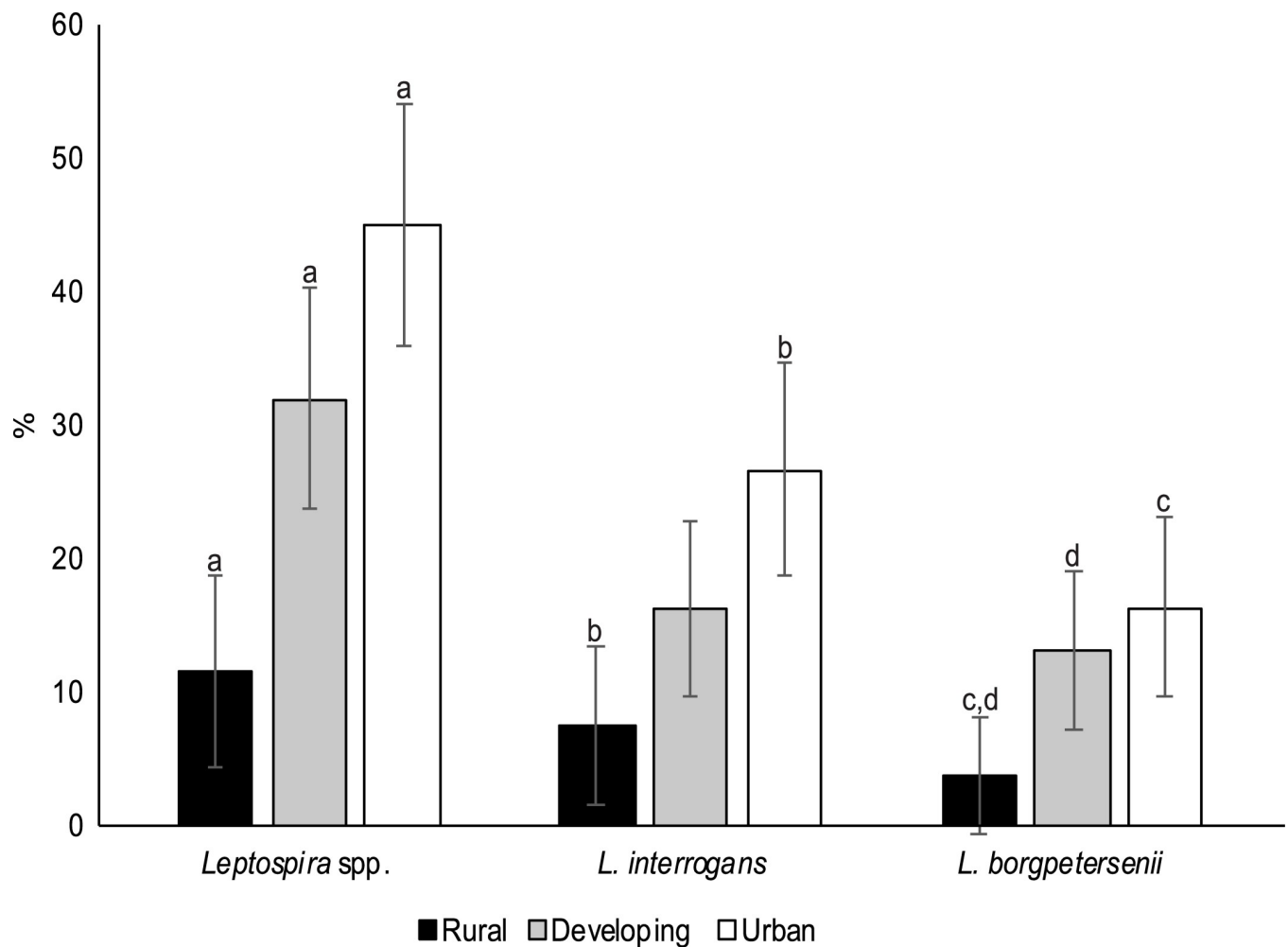


Fig 2. Proportion (%) of individuals positive for *L. interrogans*, *L. borgpetersenii* and all *Leptospira* by site location. Vertical lines show 95% confidence intervals, and bars labelled with the same lowercase letters are significantly different from each other.

<https://doi.org/10.1371/journal.pntd.0007141.g002>

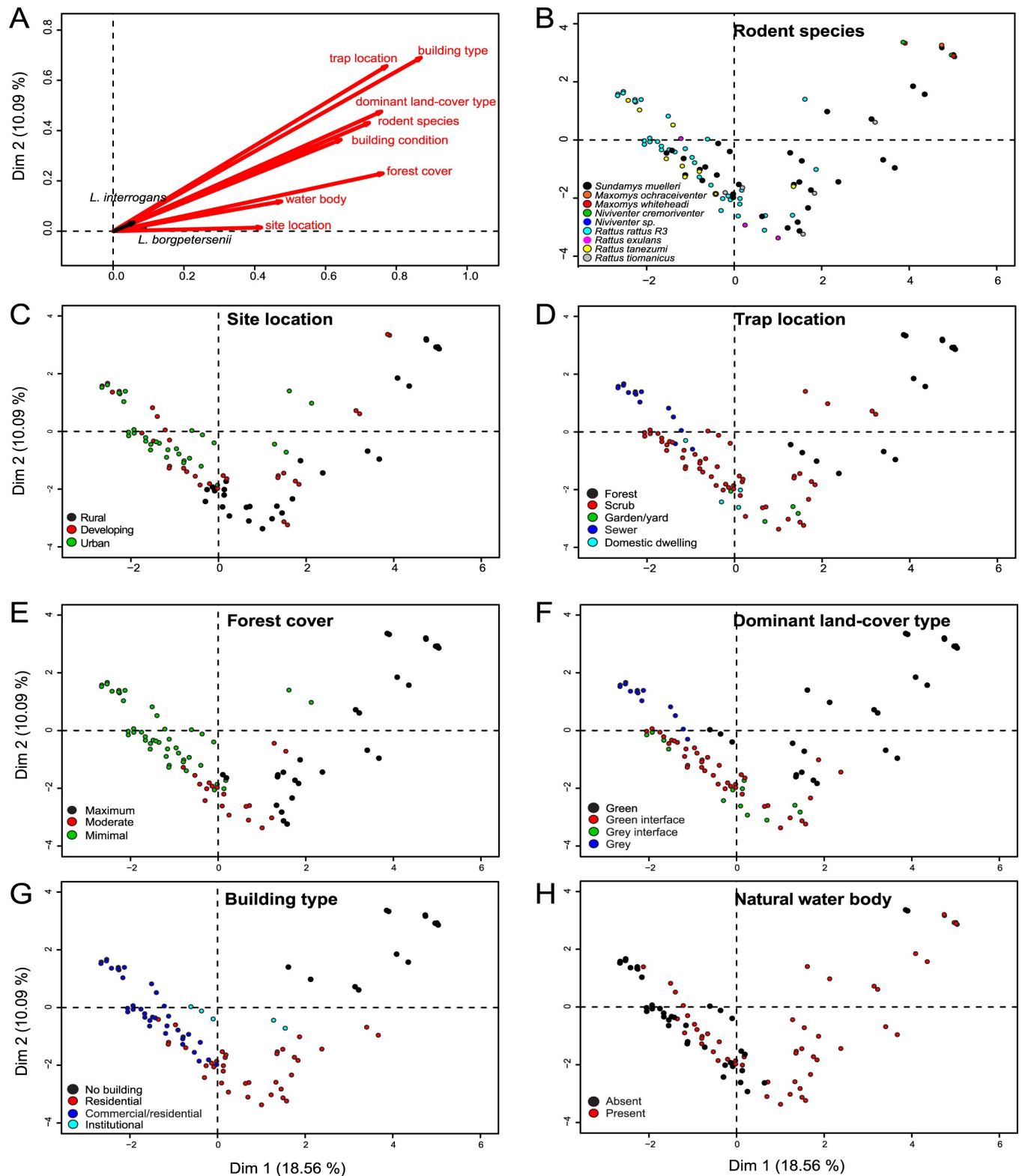


Fig 3. Multivariate analysis of the environmental variables included in the initial global GLMM. (A) Plot of all categorical variables; (B) plot of the species identity of individual rodents; (C-H) plot of individual rodents in relation to various environmental variables.

<https://doi.org/10.1371/journal.pntd.0007141.g003>

Table 2. Results of the first best global GLMM (with logit link function and rodent species as a random factor), explaining the occurrence of (1) all *Leptospira*, (2) *L. interrogans*, and (3) *L. borgpetersenii* in rodents as a function of environmental variables.

	Explanatory variables	Estimate (SD), P	Log likelihood, dev (DF)	AICc
All <i>Leptospira</i>	Forest cover			
	moderate vs maximal	0.21 (0.53), 0.70		
	minimal vs maximal	1.34 (0.41), 0.001		
<i>L. interrogans</i>	Water body			
	presence vs absence	-0.83 (0.32), 0.010	-172.1, 344.3 (311)	354.3
	Forest cover			
<i>L. borgpetersenii</i>	moderate vs maximal	0.49 (0.74), 0.51		
	minimal vs maximal	1.41 (0.63), 0.027		
	Dominant land-cover type			
	green interface vs green	-0.12 (0.56), 0.84		
	grey interface vs green	-0.35 (0.61), 0.57		
	Water body			
	presence vs absence	-0.61 (0.42), 0.15	-135.0, 270.0 (308)	286.0
<i>L. interrogans</i>	Water body			
	presence vs absence	-1.08 (0.50), 0.03		
	Trap location			
	scrub vs forest	16.95 (2498.27), 0.99		
	garden/yard vs forest	17.45 (2498.27), 0.99		
	domestic dwelling vs forest	16.85 (2498.27), 0.99		
<i>L. borgpetersenii</i>	sewer vs forest	17.65 (2498.27), 0.99	-100.7, 201.4 (309)	215.4

Values are shown for i) the estimate of the logit function (estimate) with standard deviation (SD) and p-value (P), (ii) the log likelihood with residual deviance and degrees of freedom (DF) and (iii) the corrected Akaike information criteria (AICc) of the best selected model.

<https://doi.org/10.1371/journal.pntd.0007141.t002>

(P = 0.01), which may be reflective of the association between minimal forest cover and *L. interrogans*, and the absence of a natural water body with *L. borgpetersenii* (Table 2).

The built environment GLM further investigated the effects of building type, building condition, trap location and site location on rodent infection with *Leptospira* (S5 Appendix). The first top model demonstrated that individual rodents trapped in or near buildings with mixed commercial and residential uses were more likely to be infected by both *Leptospira* species (P = 0.001, Table 3). Moreover, the presence of institutional buildings within a site (e.g.,

Table 3. Results of the first best built environment GLM (with logit link function) explaining the occurrence of (1) all *Leptospira*, (2) *L. interrogans* and (3) *L. borgpetersenii* in rodents as a function of site location, trap location, building type and building condition (S5 Appendix).

	Explanatory variables	Estimate (SD), P	Log likelihood, dev (DF)	AICc
All <i>Leptospira</i>	Building type			
	commercial/residential vs residential	1.77 (0.34), 0.0001		
	institutional vs residential	0.52 (0.72), 0.47	-158.5, 352.3 (270)	325.0
<i>L. interrogans</i>	Building type			
	commercial/residential vs residential	2.16 (0.54), 0.0001		
	institutional vs residential	1.80 (0.83), 0.029	-121.1, 267.9 (270)	248.2
<i>L. borgpetersenii</i>	Building type			
	commercial/residential vs residential	1.05 (0.44), 0.017		
	institutional vs residential	-15.1 (1057.3), 0.99	-104.3, 219.7 (270)	214.7

Values are shown for i) the estimate of the logit function (estimate) with standard deviation (SD) and p-value (P), (ii) the log likelihood with residual deviance (dev) and degrees of freedom (DF) and (iii) the corrected Akaike information criteria (AICc) of the best selected model.

<https://doi.org/10.1371/journal.pntd.0007141.t003>

churches, schools, etc.) also appeared to increase the risk of rodent infection by *L. interrogans* ($P = 0.038$, Table 3).

Discussion

The results of this study reveal that the prevalence of *Leptospira* spp. in rodents is influenced by a number of environmental factors, and that these may vary depending on the species of *Leptospira* considered. Overall, *Leptospira* prevalence increased with increasing anthropogenic influence across the landscape, with a significantly higher proportion of infected rodents observed at the urban location. In particular, *L. borgpetersenii* was most commonly found at sites without a natural body of water, whilst *L. interrogans* infection was most prevalent among rodents inhabiting sites with low forest cover. For sites within the built environment, the type of buildings present was also found to have an impact on the prevalence of both *Leptospira* species.

The overall prevalence of pathogenic *Leptospira* spp. in rodents in this study was slightly higher (32%) than those observed in other studies from the Southeast Asian region (6–27%), and was also higher than previously identified from rodents trapped in urban areas of Sarawak (5.6%, $N = 107$ rodents) [6,22,42–46]. While the discrepancy between our results and those of Pui et al. [22] are not straightforward to explain, they may be due to differences in sampling sites, organs tested and laboratory methodology. Pui et al., cultured all samples prior to detection with a single PCR assay, unlike the direct-detection methodology with multiple primer sets applied in the current study. Although the approach of Pui et al. is common, growing *Leptospira* in vitro is well-known to be challenging and can be biased by species and serovar, which may result in a lower reported prevalence.

Rural habitats have repeatedly been associated with an increased risk of leptospirosis due to associations with some types of agriculture (e.g. rice farming) and outdoor recreational activities [47,48]. As a result, the majority of research on the ecology and distribution of *Leptospira* spp. in rodents has been performed in rural environments, and the ecological drivers and risk factors for zoonotic infection in these habitats are relatively well documented. In contrast, *Leptospira* ecology in urban environments has received considerably less attention, despite the abundance of rodents and other potential hosts in urban environments, and clear evidence of human infection [49–52]. In addition, and as observed in this study, most surveys of urban rats have found a high prevalence of pathogenic *Leptospira* spp. [42,53–56]. The high population densities that rodents can reach in urban areas and the resulting frequency of human-rodent contact suggests that a real risk of human infection is present, even when infection prevalence in rodents is low [57,58]. From the results of this study we are unable to determine if the *Leptospira* spp. carried by rodents in and around Kuching are associated with human infection, or what the relevant risk factors for zoonotic transmission may be. However, previous work has assessed serovar diversity in both soil and rodents in urban Sarawak, and predominantly identified *L. interrogans* serovar Icterohaemorrhagiae [22]. This serovar is commonly associated with rodents and has been linked to human disease in Sarawak and other regions of Malaysia [59–62]. In addition, serovar Sarawak (Lepto 175) has also been detected in both humans and rodents in Sarawak but has not yet been confirmed as an agent of human disease [25,62,63]. Taken together this suggests that rodents, including the species sampled in this study, are likely a source of human infection in Sarawak and the Southeast Asian region.

In recent years, several leptospirosis outbreaks in Malaysia have been linked to outdoor activities (e.g. hiking, water-sports) in natural environments [23,42]. Reflective of this risk, both species of *Leptospira* were detected in vegetated areas across the landscape in this study.

Infected rodents were detected in disturbed forests, recreational parks and vacant lots, all of which are utilized to varying degrees by people, and which provide additional interfaces for human exposure to *Leptospira*. Across our study sites, city parks are used extensively for sporting and social activities, vacant lots for edible plant foraging and small-scale fruit and vegetable cultivation (personal observation), and disturbed forests for farming, hunting and foraging, as well as recreational activities [64,65].

In contrast, we identified an unexpected association between the presence of *L. interrogans* and reduced forest cover at a site, which may indicate that transmission is favored in more cleared (and disturbed) habitats [6,66]. However, this trend may be related to the ecology of the dominant rodent species assessed in this study. Across Southeast Asia, both members of the *R. rattus* super-group and *S. muelleri* are often found at higher abundance in disturbed and urban habitats compared to more pristine, forested habitats [67,68]. It is therefore possible that rodent population density, which was not measured here but did appear low in forested areas, is a factor that inhibits *Leptospira* spp. transmission. Alternatively, the lower infection prevalence observed at sites characterized by high forest cover may simply be a result of the relatively small number of rodents trapped at these sites. Rodent abundance may also be related to the association we identified between the presence of buildings with mixed commercial and residential uses, and an increased prevalence of both *Leptospira* investigated here. This type of building, which often has a shop, restaurant or market on the ground floor and higher-density accommodation above, is the primary building type found in the center of Kuching and at focal points of human activity in its suburbs. The disposal of waste from these premises is often informal and directed towards the sewerage system, providing an ample source of food for rodents. As sewers also provide access to water and shelter from most predators, they are regularly favored by urban rodents such as *R. norvegicus*, which can become extremely abundant in urban environments [55]. The high rodent population densities that can occur in such settings may promote the circulation of *Leptospira* and increase the risk of zoonotic transmission in urban environments. Indeed, living close to open sewers has been identified as a risk factor for human *Leptospira* infection in Salvador, Brazil, and occupational risks have been identified for town cleaners and sewage workers in other cities [24,69–71]. The drivers behind the association between *L. interrogans* positive rodents and sites with institutional buildings is less clear, although this may be an artifact of our analysis as there were only four sites in this category. However, it is worth noting that as none of these sites were rural, this association may also be reflective of benefits related to higher levels of urbanization.

It is surprising that the presence of *L. borgpetersenii* at a site was significantly more likely if natural bodies of water were absent, and may reflect the evolution of this species towards direct transmission between hosts [5]. This is reflected in the findings of another Southeast Asian study, which found *L. borgpetersenii* to be abundant in both dry and humid habitats, with the highest prevalence in non-floodable lands such as orchards, plantations and shrubby wasteland [6]. However, it may be worth noting that although sewers were accounted for by the variable ‘trap location’ in our analyses, they were not part of the variable ‘water body’ due to their artificial nature and the inconsistent presence of water in this environment. As approximately half of all *Leptospira*-positive rodents (51/100) were trapped in sewers, their exclusion from this category may have influenced these results. In addition, ‘trap location’ was not selected in the best top model for *L. borgpetersenii* (Table 2), but it was selected in the second and third top models, indicating that it may have some influence on *L. borgpetersenii* infection prevalence (S4 Appendix).

This study focused on identifying environmental factors that influence the prevalence of *Leptospira* spp. in urbanizing environments; however, the environment can both directly and indirectly influence the circulation of *Leptospira* (i.e. by shaping host ecology). While we are

unable to distinguish between these two modes of action in this study, our choice to explore the ecology of *Leptospira* across all rodents collectively is supported by several factors: 1) *Leptospira* are host generalists; 2) rodent species are not known to differ in competence; 3) a similar ecological study of *Leptospira* in Thailand found no impact of rodent species [6]; 4) individuals from *R. rattus* R3 and *S. muelleri* (comprising 84% of all captures in this study) were both found in urban, developing and rural locations, including at some of the same sites. However, infection prevalence did vary between these two species, with 42.5% of *R. rattus* R3 and 23.0% of *S. muelleri* individuals infected, suggesting that either the former is more likely to become infected, or that this species prefers to inhabit environments that promote the circulation of *Leptospira*. For example, *R. rattus* R3 was commonly caught in sewers in our study (73/165 captures), and large numbers of animals were often observed at these sites, suggestive of high population density. These conditions may promote the circulation of *Leptospira*, particularly for species such as *L. borgpetersenii*, which rely on direct transmission between hosts [5].

The number of reported cases of leptospirosis in Malaysia has increased considerably in recent years [23]. Although many cases are still documented in rural areas, zoonotic transmission is also clearly a feature of urban living, with some occupations (i.e. garbage collectors, town cleaners) associated with a higher risk of infection [24,69]. The high prevalence of *Leptospira* observed here and the importance of rodents as sources for human disease, suggests that the ecology and dynamics of rodent-associated transmission in urban Kuching warrants further study and may be required to prevent ongoing human disease. With the increasing loss of natural habitats and continuing urbanization occurring across the globe, the majority of zoonotic transmission events are anticipated to occur in urban settings. It is therefore essential to develop a thorough understanding of the drivers of pathogen transmission and zoonotic infection that occur in the ecologically and demographically complex urban environment.

Supporting information

S1 Appendix. *Leptospira* DNA sequences. Sequences too short to submit to GenBank are included in FASTA format. The sample ID and PCR assay which yielded each sequence (rpoB, flaB or 16S) is indicated in each sequence name.
(FASTA)

S2 Appendix. Differences in the prevalence of *Leptospira* in rodents between urban, developing and rural site locations.
(PDF)

S3 Appendix. Matrix of Goodman and Kruskal's τ among categorical variables describing the environments. The bottom left diagonal shows τ measurements of the predictive effect of each row variable on each column variable, and the top right diagonal shows τ measurements of the reverse association. For example, "forest cover" has a weak predictive effect on "building type" ($\tau = 0.37$), but the reverse association is much stronger ($\tau = 0.50$).
(PDF)

S4 Appendix. Comparison of the 3 top models from the global GLMM. Variables included site location, trap location, forest cover, dominant land-cover type and waterbody on individual rodent infection by (1) all types of *Leptospira*, (2) *L. interrogans* and (3) *L. borgpetersenii*. Models are ranked from lowest to highest support according AICc. K is the number of estimated parameters, AICc the selection criterion, and w_i the Akaike weights.
(PDF)

S5 Appendix. Comparison of the 3 top models from the built environment GLM. Variables included site location, trap location, building type and building condition on individual rodent infection by (1) all types of *Leptospira*, (2) *L. interrogans* and (3) *L. borgpetersenii*. Models are ranked from lowest to highest support according to AICc. K is the number of estimated parameters, AICc the selection criterion, and w_i the Akaike weights. (PDF)

Acknowledgments

The authors thank Amy Hahs (The University of Melbourne), Andrew Alek Tuen (Universiti Malaysia Sarawak), Andrew Joris Noyen (Padawan Municipal Council), Basheer Ahmed (Kuching North Municipal Council), Danielle Levesque (Universiti Malaysia Sarawak), Dilop Jina (Padawan Municipal Council), Jean-Bernard Duchemin (CSIRO), Lee Trinidad (CSIRO), Nurshilawati Abdul Latip (Universiti Malaysia Sarawak), Patrick Lai Ganum (Kuching South Municipal Council), Rachel Amos-Ritchie (CSIRO), and Samuel Wong (Universiti Malaysia Sarawak).

Author Contributions

Conceptualization: Kim R. Blasdel, David Perera, Cadhla Firth.

Data curation: Cadhla Firth.

Formal analysis: Kim R. Blasdel, Serge Morand, Cadhla Firth.

Funding acquisition: Cadhla Firth.

Investigation: Kim R. Blasdel, Cadhla Firth.

Methodology: Kim R. Blasdel, David Perera, Cadhla Firth.

Project administration: Cadhla Firth.

Resources: David Perera, Cadhla Firth.

Validation: Serge Morand.

Writing – original draft: Kim R. Blasdel, Cadhla Firth.

Writing – review & editing: Serge Morand, David Perera.

References

1. Costa F, Hagan JE, Calcagno J, Kane M, Torgerson P, Martinez-Silveira MS, et al. Global Morbidity and Mortality of Leptospirosis: A Systematic Review. *PLoS Negl Trop Dis*. 2015; 9: e0003898. <https://doi.org/10.1371/journal.pntd.0003898> PMID: 26379143
2. Plank R, Dean D. Overview of the epidemiology, microbiology, and pathogenesis of *Leptospira* spp. in humans. *Microbes Infect*. 2000; 2: 1265–1276. PMID: 11008116
3. Guernier V, Allan KJ, Goarant C. Advances and challenges in barcoding pathogenic and environmental *Leptospira*. *Parasitology*. 2017; 18: 1–13.
4. Thibeaux R, Iraola G, Ferrés I, Bierque E, Girault D, Soupé-Gilbert ME, et al. Deciphering the unexplored *Leptospira* diversity from soils uncovers genomic evolution to virulence. *Microb Genom*. 2018; 4: <https://doi.org/10.1099/mgen.0.000144> PMID: 29310748
5. Bulach DM, Zuerner RL, Wilson P, Seemann T, McGrath A, Cullen PA, et al. Genome reduction in *Leptospira borgpetersenii* reflects limited transmission potential. *Proc Natl Acad Sci U S A*. 2006; 103: 14560–14565. <https://doi.org/10.1073/pnas.0603979103> PMID: 16973745
6. Cosson JF, Picardeau M, Mielcarek M, Tatard C, Chaval Y, Suputtamongkol Y, et al. Epidemiology of leptospira transmitted by rodents in southeast Asia. *PLoS Negl Trop Dis*. 2014; 8: e2902. <https://doi.org/10.1371/journal.pntd.0002902> PMID: 24901706

7. de Faria MT, Calderwood MS, Athanazio DA, McBride AJ, Hartskeerl RA, Pereira MM, et al. Carriage of *Leptospira interrogans* among domestic rats from an urban setting highly endemic for leptospirosis in Brazil. *Acta Trop*. 2008; 108: 1–5. <https://doi.org/10.1016/j.actatropica.2008.07.005> PMID: 18721789
8. Casanovas-Massana A, Costa F, Riediger IN, Cunha M, de Oliveira D, Mota DC, et al. Spatial and temporal dynamics of pathogenic *Leptospira* in surface waters from the urban slum environment. *Water Res*. 2018; 130: 176–184. <https://doi.org/10.1016/j.watres.2017.11.068> PMID: 29220718
9. Ayril F, Zilber AL, Bicout DJ, Kodjo A, Artois M, Djelouadi Z. Distribution of *Leptospira interrogans* by Multispacer Sequence Typing in Urban Norway Rats (*Rattus norvegicus*): A Survey in France in 2011–2013. *PLoS One*. 2015; 10: e0139604. <https://doi.org/10.1371/journal.pone.0139604> PMID: 26447693
10. Dobigny G, Garba M, Tatar C, Loiseau A, Galan M, Kadaouré I, et al. Urban Market Gardening and Rodent-Borne Pathogenic *Leptospira* in Arid Zones: A Case Study in Niamey, Niger. *PLoS Negl Trop Dis*. 2015; 9: e0004097. <https://doi.org/10.1371/journal.pntd.0004097> PMID: 26437456
11. Leibler JH, Zakhour CM, Gadhoke P, Gaeta JM. Zoonotic and Vector-Borne Infections Among Urban Homeless and Marginalized People in the United States and Europe, 1990–2014. *Vector Borne Zoonotic Dis*. 2016; 16: 435–444. <https://doi.org/10.1089/vbz.2015.1863> PMID: 27159039
12. Hagan JE, Moraga P, Costa F, Capian N, Ribeiro GS, Wunder EA Jr, et al. Spatiotemporal Determinants of Urban Leptospirosis Transmission: Four-Year Prospective Cohort Study of Slum Residents in Brazil. *PLoS Negl Trop Dis*. 2016; 10: e0004275. <https://doi.org/10.1371/journal.pntd.0004275> PMID: 26771379
13. Lau CL, Watson CH, Lowry JH, David MC, Craig SB, Wynwood SJ, et al. Human Leptospirosis Infection in Fiji: An Eco-epidemiological Approach to Identifying Risk Factors and Environmental Drivers for Transmission. *PLoS Negl Trop Dis*. 2016; 10: e0004405. <https://doi.org/10.1371/journal.pntd.0004405> PMID: 26820752
14. Felzemburgh RD, Ribeiro GS, Costa F, Reis RB, Hagan JE, Melendez AX, et al. Prospective study of leptospirosis transmission in an urban slum community: role of poor environment in repeated exposures to the *Leptospira* agent. *PLoS Negl Trop Dis*. 2014; 8: e2927. <https://doi.org/10.1371/journal.pntd.0002927> PMID: 24875389
15. United Nations, Department of Economic and Social Affairs, Population Division. World Urbanization Prospects: The 2014 Revision. 2015; <https://esa.un.org/unpd/wup/publications/files/wup2014-report.pdf>
16. Andersen-Ranberg EU, Pipper C, Jensen PM. Global patterns of *Leptospira* prevalence in vertebrate reservoir hosts. *J Wildl Dis*. 2016; 52: 468–477. <https://doi.org/10.7589/2014-10-245> PMID: 27187029
17. Lund M. Commensal rodents. In: Buckle AP, Smith AH, editors. *Rodent pests and their control*. Wallingford, United Kingdom: CAB International; 1994. pp. 23–43.
18. Rothenburger JL, Himsforth CH, Nemeth NM, Pearl DL, Jardine CM. Environmental Factors and Zoonotic Pathogen Ecology in Urban Exploiter Species. *Ecohealth*. 2017; 14: 630–641. <https://doi.org/10.1007/s10393-017-1258-5> PMID: 28631116
19. Victoriano AF, Smythe LD, Gloriani-Barzaga N, Cavinta LL, Kasai T, Limpakarnjanarat K, et al. Leptospirosis in the Asia Pacific region. *BMC Infect Dis*. 2009; 9: 147–156. <https://doi.org/10.1186/1471-2334-9-147> PMID: 19732423
20. Richards DR, Friess DA. Rates and drivers of mangrove deforestation in Southeast Asia, 2000–2012. *Proc Natl Acad Sci U S A*. 2016; 113: 344–349. <https://doi.org/10.1073/pnas.1510272113> PMID: 26712025
21. Hansen MC, Potapov PV, Moore R, Hancher M, Turubanova SA, Tyukavina A, et al. High-resolution global maps of 21st-century forest cover change. *Science*. 2013; 342: 850–853. <https://doi.org/10.1126/science.1244693> PMID: 24233722
22. Pui CF, Bilung LM, Apun K, Su'ut L. Diversity of *Leptospira* spp. in Rats and Environment from Urban Areas of Sarawak, Malaysia. *J Trop Med*. 2017; e3760674.
23. Benacer D, Thong KL, Verasahib KB, Galloway RL, Hartskeerl RA, Lewis JW, et al. Human Leptospirosis in Malaysia: Reviewing the challenges after 8 decades (1925–2012). *Asia Pac J Public Health*. 2016; 28: 290–302. <https://doi.org/10.1177/1010539516640350> PMID: 27044535
24. Shafei MN, Sulong MR, Yaacob NA, Hassan H, Mohamad WMZW, Daud A, et al. Seroprevalence of leptospirosis among town service workers in Northeastern state of Malaysia. *Int J Collab Res Int Med Pub Health*. 2012; 4: 395–403.
25. Thayaparan S, Robertson ID, Abdullah MT. Serological and molecular detection of *Leptospira* spp. from small wild mammals captured in Sarawak, Malaysia. *Malaysian J Microbiol*. 2015; 11: 93–101.
26. Harper GA, Bunbury N. Invasive rats on tropical islands: Their population biology and impacts on native species. *Global Ecol Cons*. 2015; 3: 607–627.

27. Robins JH, Hingston M, Matisoo-Smith E, Ross HA. Identifying *Rattus* species using mitochondrial DNA. *Mol Ecol Notes*. 2007; 7: 717–729.
28. La Scola B, Bui LT, Baranton G, Khamis A, Raoult D. Partial *rpoB* gene sequencing for identification of *Leptospira* species. *FEMS Microbiol Lett*. 2006; 263: 142–147. <https://doi.org/10.1111/j.1574-6968.2006.00377.x> PMID: 16978348
29. Hsu CC, Tokarz R, Briese T, Tsai HC, Quan PL, Lipkin WI. Use of staged molecular analysis to determine causes of unexplained central nervous system infections. *Emerg Infect Dis*. 2013; 19: 1470–1477. <https://doi.org/10.3201/eid1909.130474> PMID: 23965845
30. Natarajaseenivasan K, Vijayachari P, Sharma S, Sugunan AP, Vedhagiri K, Selvin J, et al. FlaB PCR-based identification of pathogenic leptospiral isolates. *J Microbiol Immunol Infect*. 2010; 43: 62–69. [https://doi.org/10.1016/S1684-1182\(10\)60009-6](https://doi.org/10.1016/S1684-1182(10)60009-6) PMID: 20434125
31. Firth C, Bhat M, Firth MA, Williams SH, Frye MJ, Simmonds P, et al. Detection of zoonotic pathogens and characterization of novel viruses carried by commensal *Rattus norvegicus* in New York City. *MBio*. 2014; 5: e01933–14. <https://doi.org/10.1128/mBio.01933-14> PMID: 25316698
32. Merien F, Amouriaux P, Perolat P, Baranton G, Saint Girons I. Polymerase chain reaction for detection of *Leptospira* spp. in clinical samples. *J Clin Microbiol*. 1992; 30: 2219–2224. PMID: 1400983
33. Bourhy P, Herrmann Storck C, Theodose R, Olive C, Nicolas M, Hochedez P, et al. Serovar diversity of pathogenic *Leptospira* circulating in the French West Indies. *PLoS Negl Trop Dis*. 2013; 7: e2114. <https://doi.org/10.1371/journal.pntd.0002114> PMID: 23516654
34. Waggoner JJ, Balassiano I, Abeynayake J, Sahoo MK, Mohamed-Hadley A, Liu Y, et al. Sensitive real-time PCR detection of pathogenic *Leptospira* spp. and a comparison of nucleic acid amplification methods for the diagnosis of leptospirosis. *PLoS ONE*. 2014; 9: e112356. <https://doi.org/10.1371/journal.pone.0112356> PMID: 25379890
35. R Core Team. R: A Language and Environment for Statistical Computing. R Foundation for Statistical Computing, Vienna, Austria. 2017; <https://www.R-project.org>.
36. Chavent M, Kuentz-Simonet V, Labenne A, Saracco J. Multivariate Analysis of Mixed Data: The R Package PCAmixdata. 2017; ArXiv: 1411–4911
37. Bates D, Maechler M, Bolker B, Walker S. Fitting Linear Mixed-Effects Models Using lme4. *Journal of Stat Softw*. 2015; 67: 1–48.
38. Burnham KP, Anderson DR. Model selection and multimodel inference: a practical information-theoretic approach. Second edition, 2002, Springer, New York, New York, USA.
39. Calcagno V, de Mazancourt C. glmulti: An R Package for Easy Automated Model Selection with (Generalized) Linear Models. *J Stat Softw*. 2010 34: 1–29.
40. Pages M, Chaval Y, Herbreteau V, Waengsothorn S, Cosson J-F, Hugot J-P, et al. Revisiting the taxonomy of the Rattini tribe: a phylogeny-based delimitation of species boundaries. *BMC Evol Biol*. 2010; 10: 184. <https://doi.org/10.1186/1471-2148-10-184> PMID: 20565819
41. Pagès M, Bazin E, Galan M, Chaval Y, Claude J, Herbreteau V, et al. Cytonuclear discordance among Southeast Asian black rats (*Rattus rattus* complex). *Mol Ecol*. 2013; 22: 1019–1034. <https://doi.org/10.1111/mec.12149> PMID: 23278980
42. Benacer D, Mohd Zain SN, Sim SZ, Mohd Khalid MK, Galloway RL, Souris M, et al. Determination of *Leptospira borgpetersenii* serovar Javanica and *Leptospira interrogans* serovar Bataviae as the persistent *Leptospira* serovars circulating in the urban rat populations in Peninsular Malaysia. *Parasit Vectors*. 2016; 9: 117–127. <https://doi.org/10.1186/s13071-016-1400-1> PMID: 26927873
43. Ivanova S, Herbreteau V, Blasdell K, Chaval Y, Buchy P, Guillard B, et al. *Leptospira* and rodents in Cambodia: environmental determinants of infection. *Am J Trop Med Hyg*. 2012; 86: 1032–1038. <https://doi.org/10.4269/ajtmh.2012.11-0349> PMID: 22665613
44. Kudo Y, Vansith K, Rin E, Uchida K, Kodama S, Fukui T, et al. Molecular Epidemiological Survey of *Leptospira* Infection of Wild Rodents in the Urban Settlement of Cambodia. *Vector Borne Zoonotic Dis*. 2018; 18: 144–150. <https://doi.org/10.1089/vbz.2017.2198> PMID: 29494314
45. Loan HK, Van Cuong N, Takhampunya R, Kiet BT, Campbell J, Them LN, et al. How important are rats as vectors of leptospirosis in the Mekong Delta of Vietnam? *Vector Borne Zoonotic Dis*. 2015; 15: 56–64. <https://doi.org/10.1089/vbz.2014.1613> PMID: 25629781
46. Perez J, Brescia F, Becam J, Mauron C, Goarant C. Rodent abundance dynamics and leptospirosis carriage in an area of hyper-endemicity in New Caledonia. *PLoS Negl Trop Dis*. 2011; 5: e1361. <https://doi.org/10.1371/journal.pntd.0001361> PMID: 22039557
47. Mwachui MA, Crump L, Hartskeerl R, Zinsstag J, Hattendorf J. Environmental and Behavioural Determinants of Leptospirosis Transmission: A Systematic Review. *PLoS Negl Trop Dis*. 2015; 9: e0003843. <https://doi.org/10.1371/journal.pntd.0003843> PMID: 26379035

48. Garba B, Bahaman AR, Bejo SK, Zakaria Z, Mutalib AR, Bande F. Major epidemiological factors associated with leptospirosis in Malaysia. *Acta Trop*. 2018; 178: 242–247. <https://doi.org/10.1016/j.actatropica.2017.12.010> PMID: 29217379
49. Escandón-Vargas K, Osorio L, Astudillo-Hernández M. Seroprevalence and factors associated with *Leptospira* infection in an urban district of Cali, Colombia. *Cad Saude Publica*. 2017; 33: e00039216. <https://doi.org/10.1590/0102-311X00039216> PMID: 28614448
50. Leibler JH, Zakhour CM, Gadhoke P, Gaeta JM. Zoonotic and Vector-Borne Infections Among Urban Homeless and Marginalized People in the United States and Europe, 1990–2014. *Vector Borne Zoonotic Dis*. 2016; 16: 435–444. <https://doi.org/10.1089/vbz.2015.1863> PMID: 27159039
51. Kendall EA, LaRocque RC, Bui DM, Galloway R, Ari MD, Goswami D, et al. Leptospirosis as a cause of fever in urban Bangladesh. *Am J Trop Med Hyg*. 2010; 82: 1127–1130. <https://doi.org/10.4269/ajtmh.2010.09-0574> PMID: 20519612
52. Koizumi N, Muto M, Tanikawa T, Mizutani H, Sohmura Y, Hayashi E, et al. Human leptospirosis cases and the prevalence of rats harbouring *Leptospira interrogans* in urban areas of Tokyo, Japan. *J Med Microbiol*. 2009; 58: 1227–1230. <https://doi.org/10.1099/jmm.0.011528-0> PMID: 19528143
53. Villanueva SY, Ezoe H, Baterna RA, Yanagihara Y, Muto M, Koizumi N, et al. Serologic and molecular studies of *Leptospira* and leptospirosis among rats in the Philippines. *Am J Trop Med Hyg*. 2010; 82: 889–898. <https://doi.org/10.4269/ajtmh.2010.09-0711> PMID: 20439972
54. Himsworth CG, Bidulka J, Parsons KL, Feng AY, Tang P, Jardine CM, et al. Ecology of *Leptospira interrogans* in Norway rats (*Rattus norvegicus*) in an inner-city neighborhood of Vancouver, Canada. *PLoS Negl Trop Dis*. 2013; 7: e2270. <https://doi.org/10.1371/journal.pntd.0002270> PMID: 23818996
55. Krøjgaard LH, Villumsen S, Markussen MD, Jensen JS, Leirs H, Heiberg AC. High prevalence of *Leptospira* spp. in sewer rats (*Rattus norvegicus*). *Epidemiol Infect*. 2009; 137: 1586–1592. <https://doi.org/10.1017/S0950268809002647> PMID: 19393116
56. Costa F, Porter FH, Rodrigues G, Farias H, de Faria MT, Wunder EA, et al. Infections by *Leptospira interrogans*, Seoul virus, and *Bartonella* spp. among Norway rats (*Rattus norvegicus*) from the urban slum environment in Brazil. *Vector Borne Zoonotic Dis*. 2014; 14: 33–40. <https://doi.org/10.1089/vbz.2013.1378> PMID: 24359425
57. Feng AYT, Himsworth CG. The secret life of the city rat: a review of the ecology of urban Norway and black rats (*Rattus norvegicus* and *Rattus rattus*). *Urban Ecosyst*. 2014; 17: 149–162.
58. Gryseels S, Goüy de Bellocq J, Makundi R, Vanmechelen K, Broeckhove J, Mazoch V, et al. Genetic distinction between contiguous urban and rural multimammate mice in Tanzania despite gene flow. *J Evol Biol*. 2016; 29: 1952–1967. <https://doi.org/10.1111/jeb.12919> PMID: 27306876
59. Bharti AR, Nally JE, Ricaldi JN, Matthias MA, Diaz MM, Lovett MA, et al. Peru-United States Leptospirosis Consortium. Leptospirosis: a zoonotic disease of global importance. *Lancet Infect Dis*. 2003; 3: 757–771. PMID: 14652202
60. Rafizah AA, Aziah BD, Azwany YN, Imran MK, Rusli AM, Nazri SM, et al. A hospital-based study on seroprevalence of leptospirosis among febrile cases in northeastern Malaysia. *Int J Infect Dis*. 2013; 17: e394–7. <https://doi.org/10.1016/j.ijid.2012.12.012> PMID: 23357246
61. El Jalii IM, Bahaman AR. A review of human leptospirosis in Malaysia. *Vet. Res. Commun*. 1988; 12: 179–189. PMID: 3055663
62. Thayaparan S, Robertson ID, Fairuz A, Suut L, Gunasekera UC, Abdullah MT. Seroepidemiological study of leptospirosis among the communities living in periurban areas of Sarawak, Malaysia. *Med J Malaysia*. 2015; 70: 288–294. PMID: 26556117
63. Ridzuan JM, Aziah BD, Zahiruddin WM. Study on Seroprevalence and Leptospiral Antibody Distribution among High-risk Planters in Malaysia. *Osong Public Health Res Perspect*. 2016; 7: 168–171. <https://doi.org/10.1016/j.phrp.2016.04.006> PMID: 27413647
64. Sakai S, Choy YK, Kishimoto-Yamada K, Takano KT, Ichikawa M, Samejima H, et al. Social and ecological factors associated with the use of non-timber forest products by people in rural Borneo. *Biol Cons*. 2016; 204: 340–349.
65. Shazali J, Sridar R, Ahmad S, Syamsul H, Puvaneswaran K. The role of the Bidayuh community in packaging culture and nature for sustainable indigenous tourism product in Bau district, Sarawak. In: *Proceedings of the International Conference on Natural Resources, Tourism and Services Management 2015, Sabah, Malaysia, 15–17 April 2015*; 372–376. Universiti Putra Malaysia.
66. Della Rossa P, Tantrakarnapa K, Sutdan D, Kasetsinsombat K, Cosson JF, Supputamongkol Y, et al. Environmental factors and public health policy associated with human and rodent infection by leptospirosis: a land cover-based study in Nan province, Thailand. *Epidemiol Infect*. 2016; 144: 1550–1562. <https://doi.org/10.1017/S0950268815002903> PMID: 26607833

67. Salibay CC, Luyon HAV. Distribution of native and non-native rats (*Rattus* spp.) along an elevation gradient in a tropical rainforest of southern Luzon, Philippines. *Ecotropica* 2008; 14: 129–136.
68. Charles JK. Small mammal diversity in riparian and dipterocarp habitats in Belalong forest, Brunei Darussalam. In: Edwards DS, Booth WE, Choy SCeds) *Tropical Rainforest Research—Current issues*. *Monographiae Biologicae* 1996; 74: 175–182.
69. Reis RB, Ribeiro GS, Felzemburgh RDM, Santana FS, Mohr S, Melendez AXTO, Queiroz A, Santos AC, Ravines RR, Tassinari WS, Carvalho MS, Reis MG, Ko AI. Impact of Environment and Social Gradient on *Leptospira* Infection in Urban Slums. *PLoS Negl Trop Dis*. 2008; 2: e228. <https://doi.org/10.1371/journal.pntd.0000228> PMID: 18431445
70. Sarkar U, Nascimento SF, Barbosa R, Martins R, Nuevo H, Kalofonos I, Kalafanos I, Grunstein I, Flannery B, Dias J, Riley LW. Population-based case-control investigation of risk factors for leptospirosis during an urban epidemic. *The American journal of tropical medicine and hygiene*. 2002; 66:605–10. PMID: 12201599
71. Swapna RN, Tuteja U, Nair L, Sudarsana J. Seroprevalence of leptospirosis in high risk groups in Calicut, North Kerala, India. *Indian J Med Microbiol*. 2006; 24: 349–352. PMID: 17185876