



Mitochondrial DNA Part B Resources

ISSN: (Print) 2380-2359 (Online) Journal homepage: <https://www.tandfonline.com/loi/tmdn20>

Using ezRAD to reconstruct the complete mitochondrial genome of *Porites fontanesii* (Cnidaria: Scleractinia)

Tullia I. Terraneo, Roberto Arrigoni, Francesca Benzoni, Zac H. Forsman & Michael L. Berumen

To cite this article: Tullia I. Terraneo, Roberto Arrigoni, Francesca Benzoni, Zac H. Forsman & Michael L. Berumen (2018) Using ezRAD to reconstruct the complete mitochondrial genome of *Porites fontanesii* (Cnidaria: Scleractinia), *Mitochondrial DNA Part B*, 3:1, 173-174, DOI: [10.1080/23802359.2018.1437805](https://doi.org/10.1080/23802359.2018.1437805)

To link to this article: <https://doi.org/10.1080/23802359.2018.1437805>



© 2018 The Author(s). Published by Informa UK Limited, trading as Taylor & Francis Group.



Published online: 09 Feb 2018.



Submit your article to this journal [↗](#)



Article views: 247



View Crossmark data [↗](#)

Using ezRAD to reconstruct the complete mitochondrial genome of *Porites fontanesii* (Cnidaria: Scleractinia)

Tullia I. Terraneo^{a,b}, Roberto Arrigoni^a, Francesca Benzoni^c, Zac H. Forsman^d and Michael L. Berumen^a

^aRed Sea Research Center, Division of Biological and Environmental Science and Engineering, King Abdullah University of Science and Technology, Thuwal, Saudi Arabia; ^bARC Centre of Excellence for Coral Reef Studies, James Cook University, Townsville, QLD, Australia; ^cDepartment of Biotechnologies and Bioscience, University of Milano-Bicocca, Milan, Italy; ^dHawaii Institute of Marine Biology, Kaneohe, HI, USA

ABSTRACT

Corals in the genus *Porites* are among the major framework builders of reef structures worldwide, yet the genus has been challenging to study due to a lack of informative molecular markers. Here, we used ezRAD sequencing to reconstruct the complete mitochondrial genome of *Porites fontanesii* (GenBank accession number MG754069), a widespread coral species endemic to the Red Sea and Gulf of Aden. The gene arrangement of *P. fontanesii* did not differ from other Scleractinia and consisted of 18,658 bp, organized in 13 protein-coding genes, 2 rRNA genes, and 2 tRNA genes. This mitochondrial genome contributes essential data to work towards a better understanding of evolutionary relationships within *Porites*.

ARTICLE HISTORY

Received 12 January 2018
Accepted 1 February 2018

KEYWORDS

Mitochondrial genome;
Scleractinia; RAD
sequencing

Porites fontanesii Benzoni and Stefani, 2012 is a well-defined coral species belonging to the hard-coral family Poritidae. Although only described recently, *P. fontanesii* is a common and widespread taxon in the Red Sea, with a distribution extending to the Gulf of Tadjoura, the Gulf of Aden and Socotra (Benzoni and Stefani 2012). The genus *Porites* is still taxonomically challenging in terms of species boundaries (Forsman et al. 2009, 2017; Hellberg et al. 2016), yet *P. fontanesii* is morphologically and molecularly distinctive, presenting unique morphological features, and forming a basal monophyletic clade within the *Porites* rDNA phylogeny (Benzoni and Stefani 2012).


The individual coral sample for this study was collected at Ras Qadamah reef, in Socotra Island, Yemen (12° 41.902 N; 53° 39.683 E), and is now deposited at King Abdullah University of Science and Technology, Saudi Arabia (specimen voucher SO114). Genomic DNA was extracted using DNeasy® Blood and Tissue Kit (Qiagen Inc., Hilden, Germany), quantified using Qubit 2.0 fluorometer (Invitrogen, Carlsbad, CA), and digested with frequent cutting enzymes MboI and Sau3AI (New England Biolabs, Ipswich, MA), following Toonen et al. (2013). ezRAD libraries were prepared using Illumina TruSeq® Nano DNA kit following the manufacturer's protocol, and paired-end sequenced using HiSeq® 4000 platform in the Bioscience Core Lab facility at King Abdullah University of Science and Technology, Saudi Arabia. Reads were assembled to *P. lobata* reference mitogenome (NC030186) using Geneious® v.10.1.3 (Biomatters Ltd. Auckland, New Zealand), and a consensus sequence exported using 0% majority

option for coverage greater than 3 X. Genes were annotated using the online platforms DOGMA (Wyman et al. 2004) and MITOS (Bernt et al. 2013), and were manually inspected. tRNA was additionally scanned with the tRNAscan-SE (Schattner et al. 2005) web server.

The complete *P. fontanesii* mitogenome consisted of 18,658 bp, with the following overall base composition: A 25.81%, T 37.54%, C 13.64% and G 23.19%, in agreement with the typical mitogenome base composition (i.e. A + T rich) of scleractinian corals (Fukami and Knowlton 2005; Arrigoni et al. 2016). The reconstructed genome included 13 protein-coding genes, 2 ribosomal RNA genes (*rnl* and *rns*) and 2 transfer RNA genes (*trnM* and *trnW*). *Nad5* and *cox1* genes were interrupted by Group I Introns. *Nad5* Group I Intron consisted of 11,135 bp, comprising 10 encoding genes, while *cox1* Group I Intron was 965 bp long.

A phylogenetic tree comprising the *P. fontanesii* mitochondrial genome and all published mitogenomes of Poritidae and its sister taxon, Dendrophylliidae, has been reconstructed using Bayesian inference as implemented in MrBayes 3.1.2 (Ronquist and Huelsenbeck 2003) for 1,000,000 generations and maximum-likelihood as implemented in PhyML 3.0 (Guindon et al. 2003) (Figure 1). The monophyly of the genus *Porites* is well supported by the mitochondrial phylogeny, and a distinctive position of *P. fontanesii* within the genus is highlighted by the reconstruction.

The implementation of these data with other *Porites* mitochondrial genomes will help clarify evolution in one of the most important framework builders of coral reefs.

CONTACT Tullia Isotta Terraneo  tulliaisotta.terraneo@kaust.edu.sa  Red Sea Research Center, Division of Biological and Environmental Science and Engineering, King Abdullah University of Science and Technology, Thuwal 23955-6900, Saudi Arabia

© 2018 The Author(s). Published by Informa UK Limited, trading as Taylor & Francis Group.

This is an Open Access article distributed under the terms of the Creative Commons Attribution License (<http://creativecommons.org/licenses/by/4.0/>), which permits unrestricted use, distribution, and reproduction in any medium, provided the original work is properly cited.

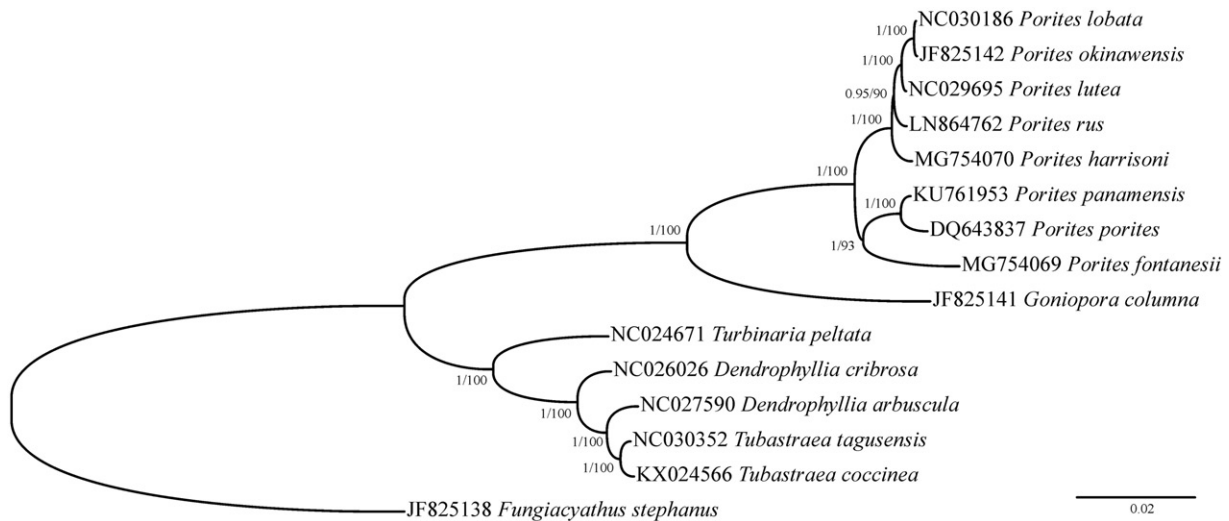


Figure 1. Phylogenetic reconstruction based on complete mitochondrial genomes of *Porites fontanesii* and other Scleractinia. Numbers at nodes represent Bayesian posterior probabilities and maximum likelihood bootstrap values. *Fungiacyathus stephanus* was selected as an outgroup.

Acknowledgements

F. Benzoni acknowledges Creoccean, Total SA, Yemen LNG and EPA Socotra for fieldwork in Socotra.

Disclosure statement

The authors report no conflict of interest. The authors alone are responsible for the content and writing of the paper.

Funding

This project was supported by funding from KAUST (award #FCC1/7/1973-21-01 and baseline research funds to ML Berumen). Z. Forsman would like to thank the Seaver Institute for funding. The HIMB contribution number is 1716 and SOEST contribution number is 10311.

References

- Arrigoni R, Vacherie B, Benzoni F, Barbe V. 2016. The complete mitochondrial genome of *Acanthastrea maxima* (Cnidaria, Scleractinia, Lobophylliidae). *Mitochondr DNA*. 27:927–928. doi:10.3109/19401736.2014.926489.
- Benzoni F, Stefani F. 2012. *Porites fontanesii*, a new species of hard coral (Scleractinia, Poritiidae) from the southern Red Sea, the Gulf of Tadjoura, and the Gulf of Aden and its phylogenetic relationships within the genus. *Zootaxa*. 3447:56–68.
- Bernt M, Donath A, Jühling F, Externbrink F, Florentz C, Fritzsck G, Pütz J, Middendorf M, Stadler PF. 2013. MITOS: improved de novo metazoan mitochondrial genome annotation. *Mol Phylogenet Evol*. 69:313–319.
- Forsman Z, Knapp I, Tisthammer K. 2017. Coral hybridization or phenotypic variation? Genomic data reveal gene flow between *Porites lobata* and *P. compressa*. *Mol Phylogenet Evol*. 11:132–148.
- Forsman ZH, Barshis DJ, Hunter CL, Toonen RJ. 2009. Shape-shifting corals: molecular markers show morphology is evolutionarily plastic in *Porites*. *BMC Evol Biol*. 9:45.
- Fukami H, Knowlton N. 2005. Analysis of complete mitochondrial DNA sequences of three members of the *Montastraea annularis* coral species complex (Cnidaria, Anthozoa, Scleractinia). *Coral Reefs*. 24:410–417.
- Guindon S, Gascuel O, Rannala B. 2003. A simple, fast, and accurate algorithm to estimate large phylogenies by Maximum Likelihood. *Syst Biol*. 52:696–704.
- Hellberg ME, Prada C, Tan MH, Forsman ZH, Baums IB. 2016. Getting a grip at the edge: recolonization and introgression in eastern Pacific *Porites* corals. *J Biogeogr*. 43:2147–2159.
- Ronquist F, Huelsenbeck JP. 2003. MrBayes 3: Bayesian phylogenetic inference under mixed models. *Bioinformatics*. 19:1572–1574.
- Schattner P, Brooks AN, Lowe TM. 2005. The tRNAscan-SE, snoscan and snoGPS web servers for the detection of tRNAs and snoRNAs. *Nucleic Acids Res*. 33:W686–W689.
- Toonen RJ, Puritz JB, Forsman ZH, Whitney JL, Fernandez-Silva I, Andrews KR, Bird CE. 2013. ezRAD: a simplified method for genomic genotyping in non-model organisms. *PeerJ*. 1:e203.
- Wyman SK, Jansen RK, Boore JL. 2004. Automatic annotation of organellar genomes with DOGMA. *Bioinformatics*. 20:3252–3255.