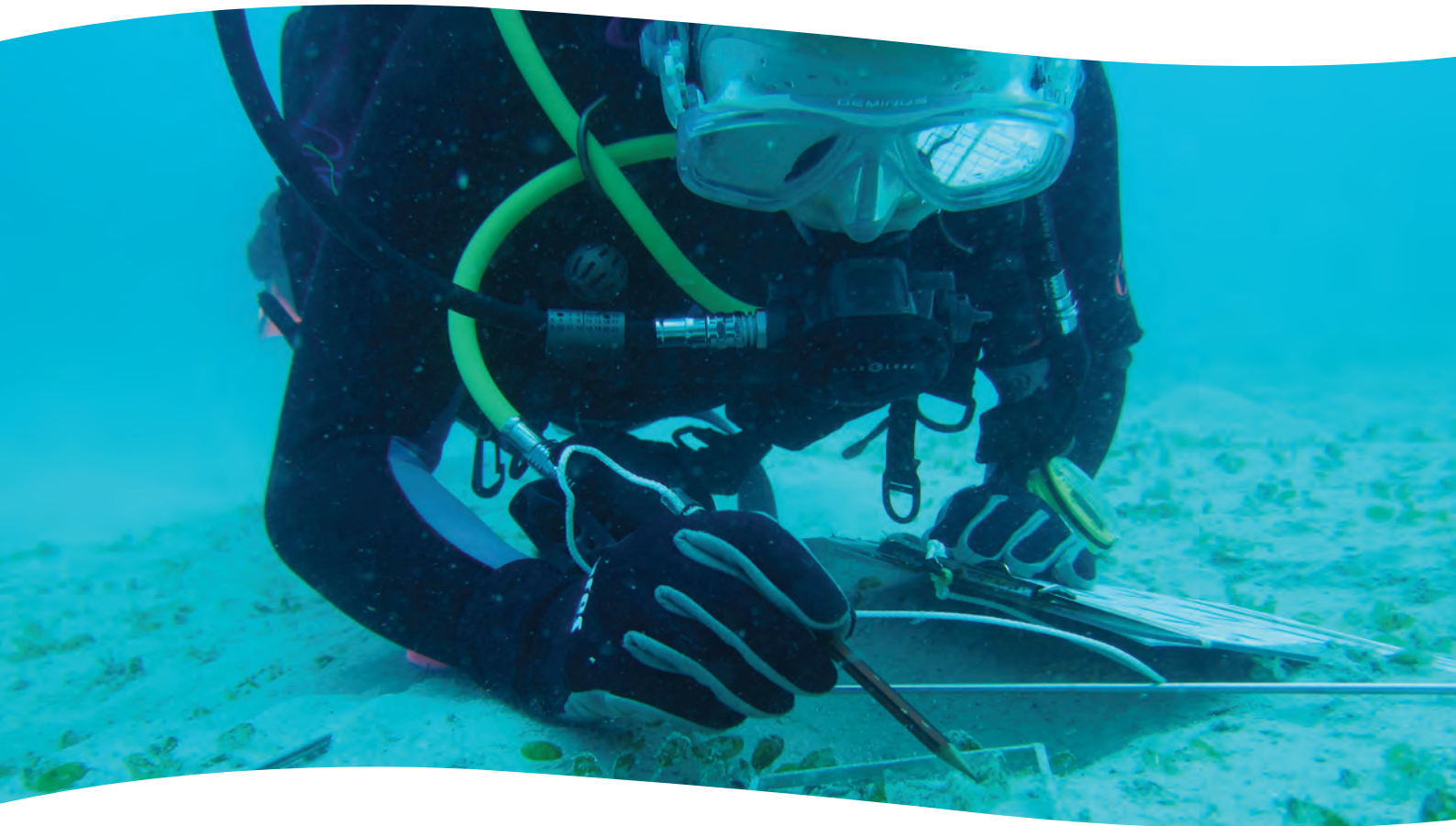


**Light thresholds for seagrasses of the GBRWHA:  
a synthesis and guiding document  
Including knowledge gaps and future priorities**

Catherine Collier, Katie Chartrand, Carol Honchin, Adam Fletcher and Michael Rasheed



# **Light thresholds for seagrasses of the GBRWHA: a synthesis and guiding document**

**Including knowledge gaps and future priorities**

Catherine J Collier<sup>1</sup>, Katie Chartrand<sup>1</sup>, Carol Honchin<sup>2</sup>,  
Adam Fletcher<sup>3</sup>, and Michael Rasheed<sup>1</sup>

<sup>1</sup> TropWATER, James Cook University

<sup>2</sup> Great Barrier Reef Marine Park Authority, Townsville

<sup>3</sup> Ports North, Cairns



Supported by the Australian Government's  
National Environmental Science Programme  
Project 3.3: Light thresholds for seagrasses of the GBRWHA: a synthesis and guiding document

© James Cook University, 2016



Creative Commons Attribution

*Light thresholds for seagrasses of the GBR: a synthesis and guiding document* is licensed by James Cook University for use under a Creative Commons Attribution 4.0 Australia licence. For licence conditions see: <https://creativecommons.org/licenses/by/4.0/>

National Library of Australia Cataloguing-in-Publication entry:  
978-1-925088-86-1

This report should be cited as:

Collier, C.J., Chartrand, K., Honchin, C., Fletcher, A. Rasheed, M. (2016). *Light thresholds for seagrasses of the GBR: a synthesis and guiding document. Including knowledge gaps and future priorities*. Report to the National Environmental Science Programme. Reef and Rainforest Research Centre Limited, Cairns (41pp.).

Published by the Reef and Rainforest Research Centre on behalf of the Australian Government's National Environmental Science Programme (NESP) Tropical Water Quality (TWQ) Hub.

The Tropical Water Quality Hub is part of the Australian Government's National Environmental Science Programme and is administered by the Reef and Rainforest Research Centre Limited (RRRC). The NESP TWQ Hub addresses water quality and coastal management in the World Heritage listed Great Barrier Reef, its catchments and other tropical waters, through the generation and transfer of world-class research and shared knowledge.

This publication is copyright. The Copyright Act 1968 permits fair dealing for study, research, information or educational purposes subject to inclusion of a sufficient acknowledgement of the source.

The views and opinions expressed in this publication are those of the authors and do not necessarily reflect those of the Australian Government.

While reasonable effort has been made to ensure that the contents of this publication are factually correct, the Commonwealth does not accept responsibility for the accuracy or completeness of the contents, and shall not be liable for any loss or damage that may be occasioned directly or indirectly through the use of, or reliance on, the contents of this publication.

Cover photographs: James Cook University Centre for Tropical Water & Aquatic Ecosystem Research

This report is available for download from the NESP Tropical Water Quality Hub website:  
<http://www.nesptropical.edu.au>

# CONTENTS

List of Tables.....	ii
List of Figures.....	ii
Acronyms .....	iii
Acknowledgements .....	iv
KEY FINDINGS.....	1
EXECUTIVE SUMMARY .....	2
1. INTRODUCTION.....	5
1.1 Guidelines and compliance standards in the GBRWHA .....	5
1.1.1 Compliance standards for short-term impacts.....	5
1.1.2 Water quality guidelines for long-term targets.....	6
1.2 GBRWHA seagrasses .....	6
1.3 Impacts of light reduction on seagrass.....	9
1.4 Approaches to monitoring and researching light thresholds .....	9
1.5 About this report .....	10
2. METHODOLOGY .....	11
2.1 Tabulating light thresholds .....	11
2.2 Translating biological thresholds into management thresholds.....	12
2.3 Quantifying light.....	13
3. Biological light thresholds for GBRWHA seagrasses .....	14
4. MANAGEMENT GUIDELINES .....	20
4.1 Recommended management thresholds for acute impacts.....	20
4.2 Case study: developing and applying acute light thresholds in Gladstone.....	22
4.3 Management thresholds for long-term maintenance of seagrass .....	24
4.4 Considerations and caveats.....	27
4.5 Knowledge gaps .....	28
5. RECOMMENDATION AND CONCLUSIONS .....	29
REFERENCES.....	30
APPENDIX 1: Synthesis of light thresholds and management guidelines for end-users .....	37

## LIST OF TABLES

<b>Table 1:</b>	Suggested management light thresholds of acute water quality impacts for GBRWHA seagrasses .....	3
<b>Table 2:</b>	Number of studies or entries contributing to the light thresholds for each species. An entry refers to a piece of information, with more than one entry possible for each study. Values in brackets are studies from con-genera from the northern hemisphere used as supporting information only. ....	11
<b>Table 3:</b>	Summary of light thresholds for the colonising <i>Halophila</i> species .....	17
<b>Table 4:</b>	Summary of light thresholds for the colonising/opportunistic <i>Zostera muelleri</i> and <i>Halodule uninervis</i> .....	18
<b>Table 5:</b>	Light thresholds for the opportunistic <i>C. serrulata</i> , <i>Syringodium isoetifolium</i> and the persistent <i>T.hemprichii</i> . ....	19
<b>Table 6:</b>	Recommended management light thresholds for GBRWHA seagrasses. ....	20
<b>Table 7:</b>	Confidence criteria table. ....	22
<b>Table 8:</b>	Long-term mean daily light ( $\text{mol m}^{-2} \text{d}^{-1}$ ) in seagrass meadows of the GBRWHA separated into water bodies (Figure 6). Site-specific mean annual light is provided as a range with the daily light range in brackets. Superscript numbers indicate the number of sites contributing to the data. From Chartrand unpubl and McKenzie et al 2016.....	26

## LIST OF FIGURES

<b>Figure 1:</b>	Seagrass habitats of the GBRWH. Adapted from McKenzie, et al. (2016) .....	7
<b>Figure 2:</b>	Dominant traits of colonising, opportunistic and persistent seagrass species. There are representatives from all 3 categories: colonising, opportunistic and persistent, within the GBRWHA and therefore these vary in their sensitivity to disturbances. Adapted from (Kilminster, et al., 2015).....	8
<b>Figure 3:</b>	Spatial distribution of studies used in this report. ....	12
<b>Figure 4:</b>	Daily light threshold (i.e. the light level causing an impact) and exposure time to that light level for <i>Z. muelleri</i> . Black dots show studies from within Queensland. The white stars are studies from NSW (Fyfe, 2003; York, et al., 2013), and the white triangle is an anomalous depth limit from Moreton Bay (Longstaff, 2002). ....	15
<b>Figure 5:</b>	Dual water quality management flow chart from Gladstone Western Basin Dredging Program (Dredge Technical Reference Committee, GPC flyer) demonstrating use of turbidity and light management strategies to ensure seagrass condition was maintained during dredging operations. ....	23
<b>Figure 6:</b>	Long-term light thresholds can be described as light levels required to ensure meadows are not limited, by their minimum light required, or by the light level required to maintain a pre-determined desired state. ....	25
<b>Figure 7:</b>	Light monitoring sites within seagrass meadows of the GBRWHA, water bodies, and seagrass distribution (composite). ....	27

## **ACRONYMS**

<b>GBR</b> .....	Great Barrier Reef
<b>GBRWHA</b> .....	Great Barrier Reef World Heritage Area
<b>MMP</b> .....	Marine Monitoring Program
<b>MTSRF</b> .....	Marine and Tropical Sciences Research Facility
<b>NERP</b> .....	National Environmental Research Programme
<b>NESP</b> .....	National Environmental Science Programme
<b>TWQ</b> .....	Tropical Water Quality

## ACKNOWLEDGEMENTS

The information contained in this synthesis comes from a range of research programs and funding sources. In particular we would like to acknowledge the Gladstone Ports Corporation, North Queensland Bulk Ports, Ports North, the National Environmental Research Programme (NERP) Tropical Ecosystems (TE) Hub, the Marine and Tropical Sciences Research Facility (MTSRF) and the Australian Government Reef Programme – Marine Monitoring Program (MMP). We would also like to thank colleagues who have contributed to former projects on threshold development, in particular those from The University of Technology Sydney who collaborated on aspects of research to develop light thresholds for *Zostera muelleri*.

## KEY FINDINGS

This synthesis contains light thresholds for seagrass species in the Great Barrier Reef World Heritage Area (GBRWHA). The thresholds can be applied to ensure protection of seagrasses from activities that impact water quality and the light environment over the short-term, such as coastal and port developments. Thresholds for long-term maintenance of seagrasses are also proposed.

- The synthesis provides clear and consistent guidance on light thresholds to apply in managing potential water quality impacts to seagrass.
- All available information on *biological light thresholds* was tabulated and conservative *management thresholds* were identified to ensure seagrass protection.
- Acute management thresholds are suited to compliance guidelines for managing short-term impacts and these are the focus of this synthesis. Long-term thresholds are suited to the setting of water quality guidelines for catchment management.
- The synthesis identified key areas where further information is required, including:
  - species for which almost no information on light thresholds exists;
  - location and population-specific thresholds particularly for the most at-risk species;
  - definitions of desired state to underpin the development of long-term light guidelines to meet them;
  - the effect of spectral quality on light thresholds; and, consideration of cumulative impacts (temperature, nutrients, sedimentary conditions) on acute and long-term light thresholds.
- Light management thresholds for acute impacts are presented for twelve species. Colonising species are the most sensitive to light reduction (i.e. lowest thresholds) and have the shortest time to impact while larger, persistent species have higher light thresholds and a longer time to impact.
- The recommended acute management thresholds are ready for application, as the conservative approach (higher light threshold, shortest time to impact) for species with low confidence should ensure protection to seagrass meadows at risk from acute light stress.



## EXECUTIVE SUMMARY

Seagrass meadows occur in habitats with high risk of exposure to water quality deterioration from coastal development and terrestrial discharge. Improvement in water quality is one of four challenges identified in the *Reef 2050 Long-term sustainability plan* that will improve meadow condition and support ongoing development of resilience. To meet water quality improvement targets, the GBRMPA sets compliance standards for activities such as coastal development, which have the potential to threaten water quality and ecosystems of the GBR. Seagrass meadows are the habitat most likely to be directly affected by coastal and port developments due to their proximity inshore and along sheltered parts of the coast. Development approvals therefore require that water quality, and specifically light, are maintained within acceptable levels. Until recently, there has been little biologically relevant information available to set appropriate thresholds. Furthermore, the GBRMPA has water quality guidelines that can be used to set targets for catchment management.

Water quality affects light reaching seagrass meadows, and light in turn controls the productivity, abundance and distribution of seagrasses. Therefore, guidelines for light are recommended as a management trigger for seagrass meadows at risk from declining water quality. Use of light as a management trigger for dredge management in Gladstone Harbour has set a precedent for incorporating light into guidelines for similar future activities. Furthermore, recent research into seagrass light thresholds and mature light monitoring programs (>8 years) are providing the information required to develop these guidelines. Up to now, most of this information has been spread amongst multiple reports and scientific publications.

Therefore, the aims of this project were to:

- provide clear and consistent guidance to environmental managers and regulatory authorities on light thresholds to apply for GBR seagrasses;
- synthesise current state of knowledge of light effects on seagrasses;
- develop a conceptual framework to guide threshold application;
- deliver a table of light thresholds and associated indicators of stress; and
- highlight critical information gaps.

All available information on seagrass light requirements was tabulated. This highlighted that there are two critical time-scales for consideration of light thresholds – acute and long-term thresholds – and these also correspond to guidelines for acute compliance standards, and water quality guidelines for catchment management, respectively. These findings were used to recommend acute management thresholds for 12 species occurring in the GBR. The management thresholds range from 2 to 6 mol m<sup>-2</sup> d<sup>-1</sup> depending on species (Table 1). The thresholds are presented together with an integration time (1 – 14 days), time to impact (7 – 50 days) and confidence score (1 – 5). Colonising species that dominate in deepwater habitat are the most sensitive to light reduction and therefore they have the lowest light thresholds (2 – 6 mol m<sup>-2</sup> d<sup>-1</sup>) and shortest time to impact (14 – 28 days) depending on species. Opportunistic species have higher light thresholds (5 – 6 mol m<sup>-2</sup> d<sup>-1</sup>) and longer time to impact (28 – 50 days). Recommended light management thresholds were similar for persistent species (5 – 6 mol m<sup>-2</sup> d<sup>-1</sup>), but with longer time to impact (50 days); however, there

is very little information available on light thresholds for persistent species and they have the lowest confidence scores. The highest confidence in management thresholds was given to *Z. muelleri* (rating of 2 where 1 is the highest) as a range of approaches including *in situ* monitoring and experimental manipulation, as well as lab experiments have verified the thresholds, but for limited populations. The conservative approach applied (higher light threshold, shortest time to impact) for species with low confidence should ensure that the recommended light management thresholds provide protection to seagrass meadows at risk from acute light stress.

**Table 1:** Suggested management light thresholds of acute water quality impacts for GBRWHA seagrasses

<i>Species</i>	<i>Classification</i>	<i>Suggested management threshold (mol m<sup>-2</sup> d<sup>-1</sup>)</i>	<i>Integration time (days)*</i>	<i>Time to impact (days)**</i>	<i>Confidence Score<sup>+</sup></i>
<i>Halophila decipiens</i>	Colonising	2	1	14	3
<i>Halophila ovalis</i> <sup>^</sup>	Colonising	2	7	14	3
<i>Halophila ovalis</i> <sup>^</sup>	Colonising	6	7	28	3
<i>Halophila tricostata</i>	Colonising	2.5	1	14	5
<i>Halophila spinulosa</i>	Colonising	2.5	7	28	4
<i>Zostera muelleri</i>	Colonising/ opportunistic	6	14	28	2
<i>Halodule uninervis</i>	Colonising/ opportunistic	5	14	40	3
<i>Cymodocea rotundata</i>	Opportunistic	6	14	28	5
<i>Cymodocea serrulata</i>	Opportunistic	5	14	50	4
<i>Syringodium isoetifolium</i>	Opportunistic	6	14	28	5
<i>Thalassodendron ciliatum</i>	Persistent	5	14	50	5
<i>Thalassia hemprichii</i>	Persistent	5	14	50	4
<i>Enhalus acoroides</i>	Persistent	5	14	50	5

\*Averaging time used to describe light history and as first signal to trigger management plan

\*\*Time to impact expected and a management plan should be implemented before this time

<sup>^</sup>Two-step threshold applies due to species plasticity, see full synthesis document for details

<sup>+</sup>Confidence score is detailed in the following table

Water quality guidelines for longer time frames will be based on long-term light thresholds, but these are not as clearly defined owing to a paucity of data. As an estimate, 10 – 13 mol m<sup>-2</sup> d<sup>-1</sup> is likely to prevent light limitation for the long-bladed species (but this range is not suitable for deepwater species, which require less light). Defining site-specific desired state and then setting light targets to achieve it will advance the establishment of long-term light thresholds.

The following recommendations can be made on the basis of this synthesis:

1. adopt recommended acute light management thresholds;
2. develop a method to determine desired state so that long-term light thresholds can be advanced for contribution to regional water quality guidelines;
3. develop locally-specific acute thresholds for application in local management; and,
4. explore the effects of cumulative impacts (temperature, nutrients, sedimentary conditions) and light quality, on acute and long-term light thresholds.

# 1. INTRODUCTION

## 1.1 Guidelines and compliance standards in the GBRWHA

There are a number of threats to water quality within the Great Barrier Reef World Heritage Area (GBRWHA), including terrestrial discharge laden with sediments, nutrients and pesticides (Brodie, et al., 2013; Coles, et al., 2015; Fabricius, et al., 2014), and coastal development can locally threaten water quality through dredge material handling and the suspension of fine sediments (Erfteemeijer and Robin Lewis III, 2006; Grech, et al., 2011; Hughes, et al., 2015; York, et al., 2015). The overarching aim of the *Reef 2050* plan is “to ensure the GBR continues to improve on its outstanding universal value every decade between now and 2050 to be a natural wonder for each successive generation to come” and water quality is one of four key challenges in achieving this goal (Great Barrier Reef Marine Park Authority and Queensland Government, 2015). Water quality improvements are tracked through the flagship monitoring program, the inshore Marine Monitoring Program (e.g. Martin, et al., 2014) and reported through the Reef Water Quality Protection Plan’s annual report card (<http://www.reefplan.qld.gov.au/measuring-success/report-cards/>). This is coupled with local monitoring from over 90 monitoring programs and detailed seagrass monitoring in high risk locations such as Queensland Ports (Coles, et al., 2015; Rasheed, et al., 2014).

According to *Reef 2050*, seagrass meadows are one of the habitats that best represent the key ecological and biological processes of the Great Barrier Reef (hereafter referred to as the Reef); provide habitat for biodiversity including threatened species; increase resilience to climate change; and provide economic and community benefits (Great Barrier Reef Marine Park Authority and Queensland Government, 2015). With this ecosystem health role in mind, seagrass condition is an important indicator for acute water quality impacts and for long-term water quality guidelines in the Reef (Great Barrier Reef Marine Park Authority, 2014).

### 1.1.1 Compliance standards for short-term impacts

In support of the water quality objectives set out in guiding policies and legislation such as *Reef 2050* and the *Environmental Protection Act 1994*, state and federal regulators set protocols for monitoring condition relative to aquatic ecosystem guidelines. These are to be implemented by proponents wanting to undertake discrete activities that have the potential to threaten the water quality and ecosystems within the GBRWHA. These protocols outline recommendations for water quality guidelines, sample number, sampling frequency, and reporting protocols (e.g. statistics). The protocols themselves are Reef-specific (where possible), and are based on scientifically derived information.

In some locations, such as Gladstone Harbour, investment into research and monitoring has enabled the development of locally-specific compliance standards for management of a major dredging operation. This included management thresholds for light with the explicit aim of maintaining seagrass biomass (Gladstone Ports Corporation Pty Ltd 2014). Light was included in the management framework because it was recognised that seagrass condition and resilience is largely driven by incoming light, and research had been undertaken that could enable light to be used as a threshold during dredging scenarios. This light-based

management plan has set a precedent for inclusion of light in future compliance monitoring (see case study below).

In a recent review of dredge management priorities, the development of ecological tolerance thresholds for regulation, was highlighted as one of three key priority areas for future investment (Schaffelke, et al., 2016). There has been considerable research into light requirements and thresholds for seagrasses of the Reef (e.g. Chartrand, et al., 2012; Chartrand, et al., Subm; Collier, et al., 2012a; Collier, et al., In Press; Mckenna, et al., 2015b) and monitoring to characterise light levels within seagrass meadows (Bryant, et al., 2014; McKenzie, et al., 2016). Most of this research has focussed on short-term light thresholds that are applicable to compliance monitoring (detailed below) and integration into management frameworks. However, the research findings, apart from the Gladstone case study, have not been readily available to managers to incorporate into compliance standards.

### **1.1.2 Water quality guidelines for long-term targets**

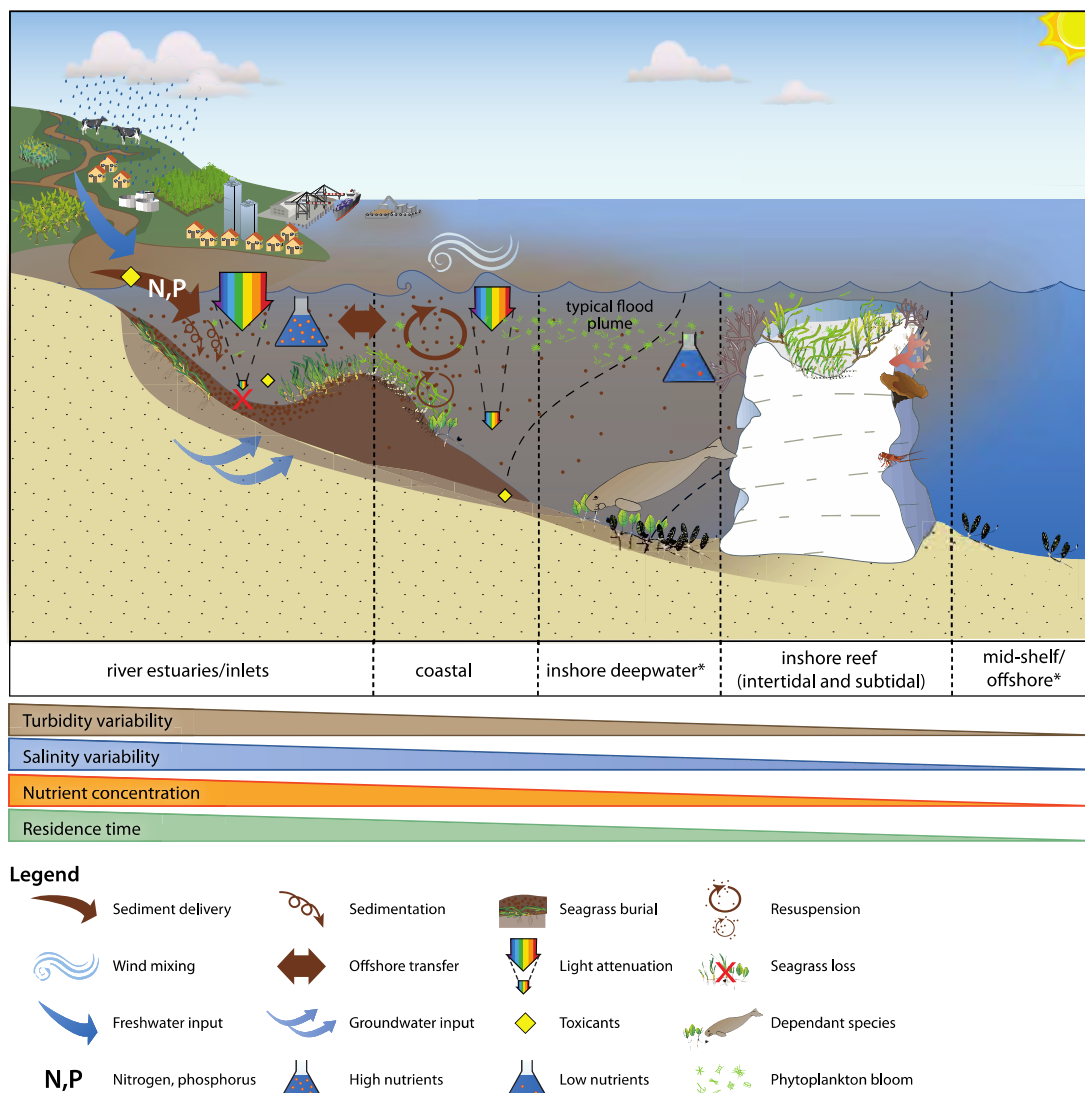
For establishing longer-term and regional water quality guidelines (i.e. not linked to a development activity), the Great Barrier Reef Marine Park Authority (GBRMPA) prepared water quality guidelines for the Great Barrier Reef (2010) with trigger levels that are protective of a desired ecosystem state. These are developed for the Reef based on locally-derived thresholds and local priorities, as recommended through the Australian and New Zealand Guidelines for Fresh and Marine Water Quality (ANZECC). If levels are outside the guidelines, it is a prompt for managers to take action. The guidelines focus on sediments, nutrients and pesticides, which are the main catchment run-off pollutants that affect water quality reaching the Reef. *Reef 2050* outlines the procedures for adaptive management of the the Reef whereby guidelines are modified due to emerging threats and/or enhanced understanding (through research). Therefore, the GBRMPA, in collaboration with the Queensland Government, is taking the opportunity to implement additional guidelines through catchment-level schedules.

Furthermore, the Queensland government prepares water quality guidelines for Queensland waters (generally superseded by local guidelines within the GBRWHA) to protect environmental values (EVs). These are derived from 1. direct measurement of biological impacts (e.g. experiments), or 2. acceptable departure from a reference condition (Department of Environment and Heritage Protection, 2009). As all of Queensland's seagrass species occur within the Reef, the research undertaken on light requirements for seagrasses within the Reef are also relevant to the Queensland water quality guidelines.

## **1.2 GBRWHA seagrasses**

The GBRWHA includes one of the world's greatest areas of seagrass (35,000km<sup>2</sup>) (Coles, et al., 2015). Across this range, seagrass inhabits estuarine (or semi-enclosed), coastal, reef and deepwater habitats. These are distributed in a cross-shelf gradient, except for deepwater habitats which occur throughout the Reef in water >10–15m. The inshore habitats (estuarine and coastal) are exposed with the greatest frequency to turbid and nutrient-enriched water from terrestrial discharge and resuspension (Devlin, et al., 2015; Fabricius, et al., 2014; McKenzie, et al., 2016). Reef habitats and mid-shelf deepwater habitats have infrequent

exposure to terrestrial discharge. Cumulative risk is generally highest in the southern two thirds of the GBRWHA within highly developed ports and urbanised catchments where the threats from terrestrial discharge are combined with local development pressures (Grech, et al., 2011).



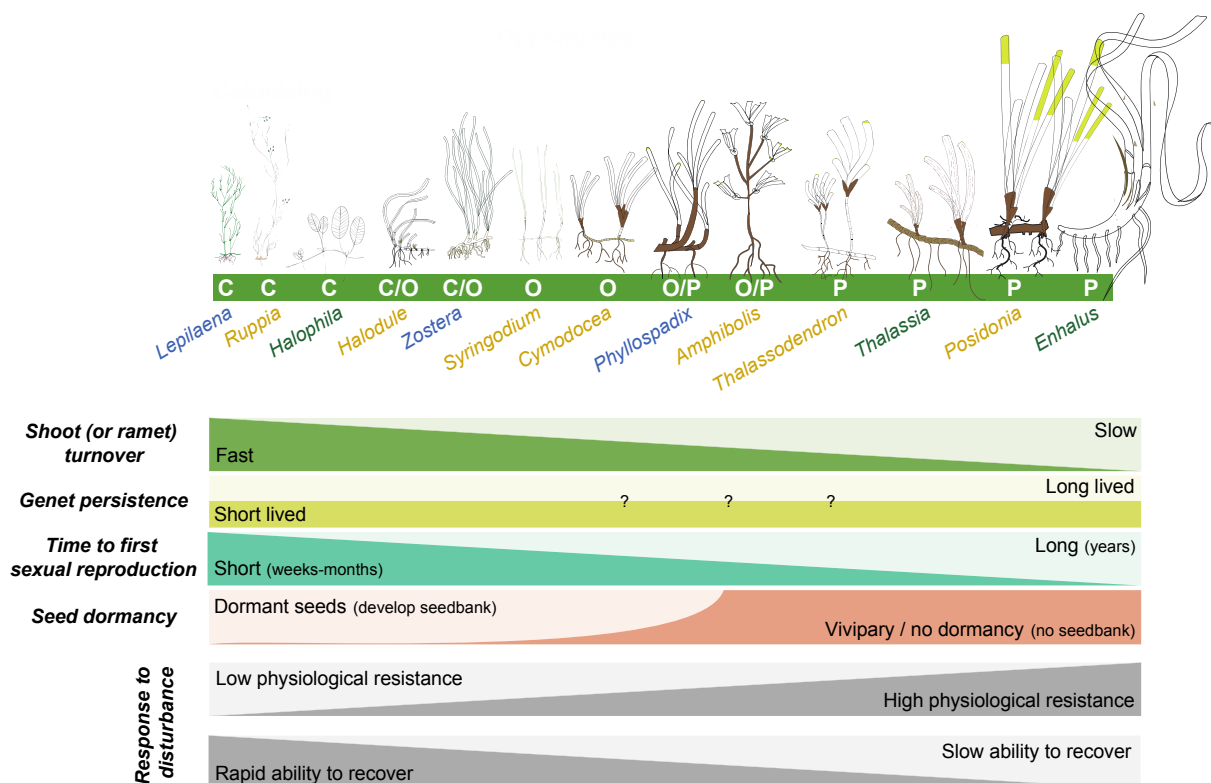
**Figure 1:** Seagrass habitats of the GBRWH. Adapted from McKenzie, et al. (2016)

There are 15 seagrass species in the GBRWHA from three different families (Waycott, et al., 2004). The dominant species varies among the habitats. For example, *Zostera muelleri* predominantly occupies habitat with high mud content. In contrast, *Thalassia hemprichii* and *Cymodocea rotundata* occupy coarse carbonate sand with low mud content and therefore occur more commonly in reef habitats. *Halodule uninervis* and *Halophila ovalis* are generalists, occurring in a range of habitat types. These, together with *Zostera muelleri* are the most common species in shallow habitats (<5m), while *Halophila* species dominate in deeper water habitat.

Seagrass species can be classed as colonising, opportunistic, or persistent (Figure 2); (Kilminster, et al., 2015). Persistent species occupy relatively stable habitats and form enduring meadows (e.g. *Thalassia* and *Enhalus*), while colonising species tend to be

transitory. Colonising and opportunistic species succumb to disturbances (such as light limitation) the most quickly and this is due, in part, to lower overall storage capacity (Collier, et al., 2012b; Longstaff and Dennison, 1999). Yet these are the most dominant species in the the Reef, particularly in the inshore regions where water quality presents the greatest risk. These colonising and opportunistic species have been the focus of research into light requirements owing to their sensitivity to low light and their occurrence in at-risk inshore habitat.

The long-term presence of colonising species in at-risk habitats can be attributed to their recovery traits, specifically, they can recolonise following small-scale disturbances (such as single short flood events), through rapid expansion (rhizome extension), and from seed banks (McKenzie, et al., 2016; Rasheed, 2004; Unsworth, et al., 2015). Despite this, they remain highly vulnerable to large-scale or repeated disturbances, with many examples throughout the Reef where they have not recovered, or are recovering very slowly following loss in 2009 – 2011 (McKenzie, et al., 2016; Rasheed, et al., 2014). The ecological effects of this loss (record dugong and turtle mortality in 2011 (Meager and Limpus, 2012), have been a reminder of the need to avoid seagrass loss by the implementation of appropriate management measures.



**Figure 2:** Dominant traits of colonising, opportunistic and persistent seagrass species. There are representatives from all 3 categories: colonising, opportunistic and persistent, within the GBRWHA and therefore these vary in their sensitivity to disturbances. Adapted from (Kilminster, et al., 2015).

### 1.3 Impacts of light reduction on seagrass

Seagrasses are dependent on light for photosynthetic carbon fixation, growth and biomass production. Among marine plants, seagrasses have relatively high light requirements because they invest in building and maintaining non-photosynthetic structure including rhizomes and roots (Dennison, et al., 1993). They are predominantly found in coastal regions, colonising sediment-rich banks in relatively shallow water in order access light and where nutrients are abundant to support growth (Collier and Waycott, 2009). These habitats are also at risk from terrestrial discharge and from coastal development. The availability of light limits their spatial distribution (depth range), and light limitation can drive seagrass loss (Chartrand, et al., Subm; Collier, et al., 2012a; Collier, et al., 2012b; Rasheed, et al., 2014).

Variable water quality in coastal environments creates perpetually fluctuating light conditions (de los Santos, et al., 2010; Petrou, et al., 2013), which can quickly manifest into changes in plant physiology and ultimately affect morphology and abundance if light drops below a certain point (Ralph et al. 2007). Within the plant, strategies to cope with light reduction include: adjusting light harvesting capacity and the efficiency of light use (Abal, et al., 1994; Enríquez, 2005); adjustments to rates of growth and plant turnover (Collier, et al., 2012b; Collier, et al., 2009); and drawing upon carbohydrate reserves to maintain productivity (Burke, et al., 1996; Touchette and Burkholder, 2000). Molecular signalling drives seagrass responses to light limitation through the expression of stress-inducible genes (Schliep, et al., 2015). However, despite these inbuilt capacities, seagrasses can be acutely sensitive to reductions in light beyond “typical” conditions, which leads to shoot and even meadow-scale seagrass loss with consequences for ecosystem function (Collier, et al., 2012a; Hughes, et al., 2008; McKenzie, et al., 2016; Petus, et al., 2014; Rasheed, et al., 2014).

### 1.4 Approaches to monitoring and researching light thresholds

Research into seagrass light thresholds has been undertaken using a number of approaches, including:

1. *in situ* light measurements, which can show when reductions in benthic light coincide with seagrass loss (e.g. Chartrand, et al., 2012; Collier, et al., 2012a);
2. *in situ* experiments, which test light thresholds within local site conditions (Chartrand, et al., Subm);
3. minimum light requirements, which is the annually averaged daily light at the depth limit of the seagrass meadow (Longstaff, 2002); and,
4. laboratory experiments, which enable detailed testing of light thresholds and cumulative effects (Collier, et al., 2012b; Collier, et al., In Press).

In 2016, light is being monitored at 35 locations spanning more than 2000 km and covering all described habitat types (Figure 1), and in all 6 NRM regions within the GBRWHA and also into the Gulf of Carpentaria. Light is recorded using autonomous  $2\pi$  loggers (Odyssey™) that measure photosynthetically active radiation (PAR) with wiper units to keep sensors clean throughout deployment. Light is recorded as instantaneous light ( $\mu\text{mol m}^{-2} \text{s}^{-1}$ ) every 15 – 30 minutes, and is summed to daily light ( $\text{mol m}^{-2} \text{d}^{-1}$ ), which integrates daily light exposure



(Bryant, et al., 2014; McKenzie, et al., 2016). Defining the light environment in terms of daily light removes diurnal variability, but daily light is also highly variable among days. Daily light is therefore reported as a (rolling) average of the previous 14 days (Chartrand, et al., 2012) or 28 days (McKenzie, et al., 2016). This enables quantification of the recent light history and detection of trends. The trends in light recorded in these monitoring programs are reported in multiple publications depending on the location and monitoring program (e.g. Bryant, et al., 2014; Chartrand, et al., Subm; McKenna, et al., 2015a; McKenzie, et al., 2016). Seagrass monitoring, in high-risk areas such as urbanised centres, ports and near sources of terrestrial discharge, provides valuable information on ecosystem condition to inform management, planning and compliance of activities with the potential to impact on local seagrasses. Specifically, monitoring data is also used to test and validate light thresholds.

## 1.5 About this report

The aims of this project were to:

- provide clear and consistent guidance to environmental managers and regulatory authorities on light thresholds to apply for seagrasses with the GBRWHA;
- synthesise current state of knowledge of light effects on seagrasses;
- develop a conceptual framework to guide threshold application;
- deliver a table of light thresholds guidelines and associated indicators of stress for key seagrass species in the Great Barrier Reef for immediate application by multiple end-users (i.e. managers, regulators, modelers etc); and,
- highlight critical information gaps for species and thresholds to focus future research efforts.

The following tables and associated text is a guiding document for managers and regulators to better understand what is known on the light required to sustain seagrasses within the GBRWHA. The report is separated into acute light thresholds typically impacts lasting less than 3 months), for which the majority of information is available and provides guidance for discrete coastal development activities, and long-term light guidelines for catchment-scale water quality concerns. Detailed justification for each species is discussed as well as definitive knowledge gaps that limit our understanding and therefore capacity to set light thresholds for managing impacts to seagrass from both acute and chronic sources.

## 2. METHODOLOGY

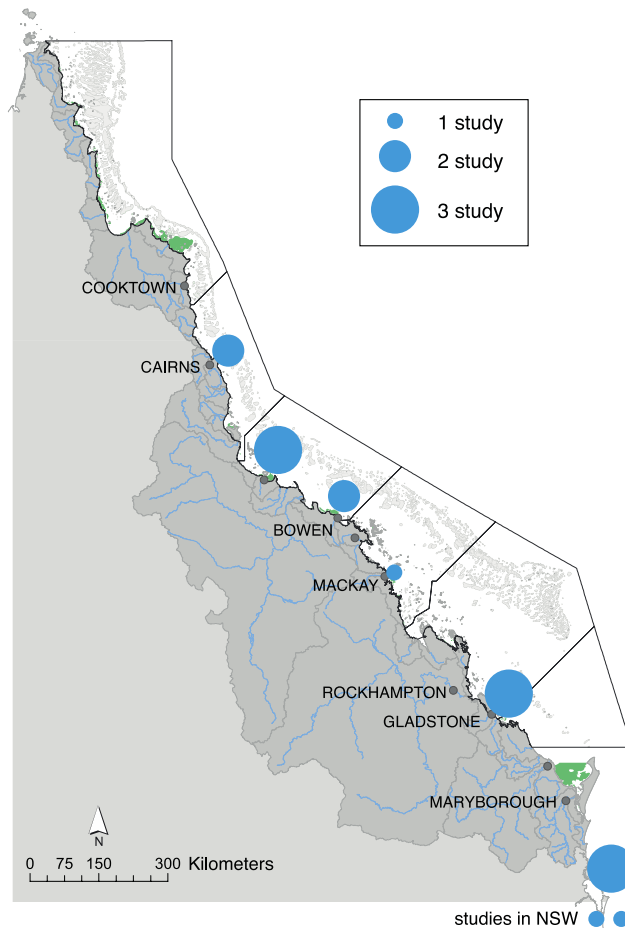
### 2.1 Tabulating light thresholds

All information on seagrass light thresholds and light requirements were sourced from peer-reviewed publications, the grey literature and unpublished work (unpub. results were restricted to that within the TropWATER group at JCU by the authors of this report). The search was undertaken for all species that occur in the Reef; however, all studies from the tropics and subtropics were sourced and therefore included results from south of the Reef (Moreton Bay and NSW) (Figure 3). The tables provide information on 12 seagrass species found within the GBRWHA. The number of studies varied among species ranging from 0 (*Cymodocea rotundata*, *Thalassodendron ciliatum* and *Syringodium isoetifolium*) to 7 for *Zostera muelleri* (Table 2).

**Table 2:** Number of studies or entries contributing to the light thresholds for each species. An entry refers to a piece of information, with more than one entry possible for each study. Values in brackets are studies from congenera from the northern hemisphere used as supporting information only.

<i>Species</i>	<i>Classification</i>	<i>No. entries</i>	<i>No. studies</i>
<i>Halophila decipiens</i>	Colonising	4	3
<i>Halophila spinulosa</i>	Colonising	4	2
<i>Halophila tricostata</i>	Colonising	1	1
<i>Halophila ovalis</i>	Colonising	8	3
<i>Zostera muelleri</i>	Colonising/opportunistic	17	7
<i>Halodule uninervis</i>	Colonising/opportunistic	10	4
<i>Cymodocea rotundata</i>	Opportunistic	0	0
<i>Cymodocea serrulata</i>	Opportunistic	8	3
<i>Syringodium isoetifolium</i>	Persistent	0	0 (+2)
<i>Thalassodendron ciliatum</i>	Persistent	0	0
<i>Thalassia hemprichii</i>	Persistent	2	1 (+6)
<i>Enahlus acroides</i>	Persistent	1	1

The *biological light thresholds* are defined as an intensity below which a significant negative change in seagrass physical condition was observed using monitoring data or experimental approaches. There are many indicators of seagrass light stress, and some of these may be early warning indicators of imminent loss (McMahon, et al., 2013; Ralph, et al., 2007; Roca, et al., 2016; Schliep, et al., 2015). However, in this study, the focus has remained on abundance metrics because they are ecologically significant changes (representing loss of habitat function), sensitive to light reduction, and commonly measured (McMahon, et al., 2013). This approach is consistent with recommended endpoints for water quality guideline derivation, which should be ecologically relevant (e.g. survival, growth and reproduction) (Batley, et al., 2014).



**Figure 3:** Spatial distribution of studies used in this report.

## 2.2 Translating biological thresholds into management thresholds

The recommended *light management thresholds* are more conservative than the biological thresholds derived from studies and long-term datasets. If light is maintained above these management recommendations, seagrass abundance (biomass, density, percent cover) and in turn, the structure and habitat function of the meadow should be preserved. Unlike the ecosystem threshold, management thresholds or water quality guidelines typically aim to achieve a pre-determined target such as no loss, undetectable loss, or a set level of acceptable loss (Collier, et al., In Press; Qian and Cuffney, 2011; Schneider, 2013). This approach (no, or undetectable loss) has been adopted in this report for light management thresholds.

Duration of exposure has an effect on biological light thresholds, and it was identified that there were two important time-scales: 1. acute; and, 2. long-term/annual. These time-scales are carried through to the recommended light management thresholds, however the exact time separating acute vs long-term varies among species but typically fell in the range <40 days for acute and 3 months – 1 year for long-term. Also shown is the biological response indicator and degree it was impacted (e.g. loss of biomass), as this can indicate how far beyond the “threshold” light reduction has pushed the biological response. Light thresholds

are expressed as a range in  $\text{mol m}^{-2} \text{d}^{-1}$  together with time (days) to impact of the seagrass species. The findings are presented from the most recent to the oldest studies. Species are grouped into life history strategies (colonising, opportunistic and persistent) (sensu. Kilminster, et al., 2015). Data were also grouped into meaningful entries. For example, if the same experiment was run for multiple days, then changing thresholds over time are shown within the same cell, as all other factors for the two entries are the same. Where conditions changed (e.g. new method, or new interactive factor was tested), then a new cell was created.

## 2.3 Quantifying light

The recommended unit for seagrass light thresholds is daily light ( $\text{mol photons m}^{-2} \text{d}^{-1}$ , hereafter abbreviated to  $\text{mol m}^{-2} \text{d}^{-1}$ ), rather than percentage of surface irradiance (%SI), which is another commonly used light indicator. This is because daily light is the diurnally integrated light exposure and is affected by clouds, turbidity or other light reducing properties of the water. That is, it defines the light required for seagrass maintenance irrespective of the cause of light reduction. This is an important distinction (from using %SI) because it means that operations that could affect seagrasses need to consider the light history and condition of the meadow rather than just turbidity. For example, surface irradiance at Low Isles, Green Island and Dunk Island (Wet Tropics region) was  $30.1 \text{ mol m}^{-2} \text{d}^{-1}$ ,  $33.4 \text{ mol m}^{-2} \text{d}^{-1}$ , and  $31.9 \text{ mol m}^{-2} \text{d}^{-1}$  (2009 – 2015), respectively. At Magnetic Island (Burdekin) surface irradiance was  $23.6 \text{ mol m}^{-2} \text{d}^{-1}$  while Gladstone Harbour (Fitzroy) was  $29.8 \text{ mol m}^{-2} \text{d}^{-1}$  (2014 – 2015; unpublished data). On average among these sites, surface light was  $29.3 \text{ mol m}^{-2} \text{d}^{-1}$ . For comparison to studies presenting thresholds in %SI,  $5 \text{ mol m}^{-2} \text{d}^{-1}$  is around 16.8 %SI and  $10 \text{ mol m}^{-2} \text{d}^{-1}$  is 33.6 %SI but this will vary depending on incoming solar irradiance. In studies where thresholds were not presented as daily light (in  $\text{mol m}^{-2} \text{d}^{-1}$ ), but rather as % surface light, or % reduction then daily light was calculated from information contained within the article, or within the region on surface light (in  $\text{mol m}^{-2} \text{d}^{-1}$ ).

### 3. Biological light thresholds for GBRWHA seagrasses

The following tables and associated text is a guiding document for managers and regulators to better understand what is known about the light required to sustain seagrasses within the GBRWHA. This section details the *biological light thresholds* (i.e. measured thresholds), and the following section provides recommended *management thresholds* and guidelines that will provide protection to seagrasses at risk from water quality impacts.

Experimental studies are generally limited in their treatment resolution (i.e. there is a set number of treatment levels), which usually means that the true “threshold” falls between treatment levels. Hence, interpretations of values in Tables, 3, 4 and 5 need to consider light levels in which there was both loss, and no loss. Some studies avoid this by taking different approaches. For example, the minimum light requirement (MLR) may be used as an annual average light level that a seagrass requires for survival. Other studies adopt a greater number of treatment levels, which can help resolve thresholds (e.g. Abal, et al., 1994) and enable alternate statistical approaches such as curve fitting to calculate thresholds (Collier, et al., In Press).

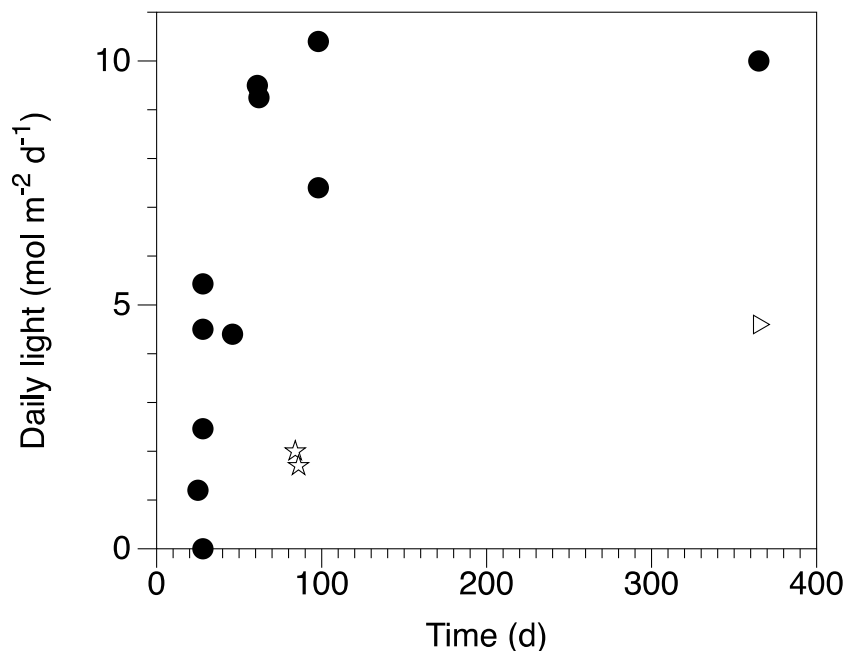
There has been greatest investment into light requirements for the dominant coastal species of the Reef because they are the species most at risk from water quality impacts caused by coastal development and terrestrial discharge. These include *H. ovalis*, *H. uninervis* and *Z. muelleri*. These species are classified as fast growing colonising species, or the latter two are often considered opportunistic species (Kilminster, et al., 2015). This means that they are sensitive to environmental perturbations, with limited capacity for resistance. Generally, they are impacted after 28 days under light limitation (Table 4).

Recent studies on deepwater seagrass species (*H. decipiens*, *H. tricostata*, *H. spinulosa*) have greatly expanded the available information on light requirements for these communities (Chartrand et al., unpubl.). These deepwater species generally grow under low light at depth, forming sparse meadows during the growing season (~Sep – Dec). These can completely die off (*H. decipiens*), or persist but at very low biomass (*H. tricostata*, *H. spinulosa*). *H. decipiens*, is particularly sensitive to light limitation with rapid loss of biomass after just 14 days at 1.1 mol m<sup>-2</sup> d<sup>-1</sup> (Chartrand pers. comm, Table 3), or when the average growing conditions are 2 to 2.6 mol m<sup>-2</sup> d<sup>-1</sup> (Table 8). *H. ovalis* can be just as sensitive to low light (Chartrand, et al., 2012; Longstaff and Dennison, 1999) rapidly declining after just 12 – 16 days, under very low light. However, *H. ovalis* can also occur in shallow high light habitats and so higher light thresholds have also been identified through a range of studies (Chartrand, et al., 2012; Collier, et al., In Press). *H. spinulosa* and *H. tricostata* can also occur in deepwater habitats, and are more tolerant of low light, likely due to greater investment into below-ground biomass and storage of reserves, which increases their tolerance to short-term light reduction. Hence impacts were observed after a longer time frame (30 days).

The true opportunistic species and the persistent species tend to be more tolerant of periods below light thresholds. Despite this, the light levels leading to an impact can be similar for *H. uninervis* and *Z. muelleri*, but they take longer to take effect (e.g. Collier, et al., 2012b; Collier, et al., In Press). There is, however, considerably less known about the light

requirements of the opportunistic and persistent species, with no information available for three species.

Light thresholds are affected by exposure period and acute light stress is tolerated at lower light levels than long-term light stress. The light thresholds measured for *Z. muelleri* (Table 4) are plotted in Figure 4. Over the short-term (<40 days), measured light thresholds do not exceed  $5.4 \text{ mol m}^{-2} \text{ d}^{-1}$ . They can tolerate low light conditions by undergoing some photo-acclimation and by drawing on storage reserves (Ralph, et al., 2007), but as the time of exposure increases towards 28 – 40 days, the energetic imbalances caused by a reduction in photosynthetic rate leads to biomass loss. As the duration of light limitation is extended even further (>80 d), light thresholds increased to a maximum of  $10.4 \text{ mol m}^{-2} \text{ d}^{-1}$  (Figure 4). Hence the definition of an acute impact for this species is relevant for <40 days and long-term thresholds refers to impacts lasting ~80 days to annual time-scales. The effect of exposure time on light thresholds has been demonstrated for other species in some studies (Collier, et al., 2012b; Collier, et al., In Press), but there is insufficient information to enable the generation of such time plots for other species. The time over which an impact can be considered “acute” has been generated for these species using a similar approach i.e. the shortest duration in which light reduction takes effect.



**Figure 4:** Daily light threshold (i.e. the light level causing an impact) and exposure time to that light level for *Z. muelleri*. Black dots show studies from within Queensland. The white stars are studies from NSW (Fyfe, 2003; York, et al., 2013), and the white triangle is an anomalous depth limit from Moreton Bay (Longstaff, 2002).

As shown in Table 4, light thresholds can be affected by water temperature (Chartrand, et al., Subm; Collier, et al., In Press). Higher temperatures may increase the rate of respiration (carbon loss), and therefore require higher light to drive photosynthetic rates in excess of respiratory loss (Collier, et al., 2011). Light thresholds could be influenced by a range of other factors including nutrient availability, herbicide exposure and sediment conditions. For example, herbicide exposure, at concentrations that are recorded in Reef coastal waters ( $0.4 \mu\text{g L}^{-1}$ ), has a potential shading equivalent of 10% based on declines in photosynthetic

efficiency (Negri, et al., 2015). Furthermore, genetic composition/diversity can affect tolerance to disturbances (Reusch, et al., 2005), but this has not been tested for light thresholds. Where light thresholds are developed in situ (Chartrand, et al., Subm; Collier, et al., 2012a), the inherent site characteristics (e.g. sediment type and nutrient availability), are included in the derivation of the light threshold. However, how local environmental conditions affect these light thresholds is largely unknown.

**Table 3:** Summary of light thresholds for the colonising *Halophila* species

Location	Season/ temperature	Impact	Light intensity	Time to Impact (d)	Zone	Study Location	Notes	Reference
<b><i>Halophila decipiens</i></b>								
Green Island	Oct	Shoot loss No impact found	1.1 mol m <sup>-2</sup> d <sup>-1</sup> 3.2 mol m <sup>-2</sup> d <sup>-1</sup>	14 30	Tropical	Lab		Chartrand et al <i>in prep</i>
Green island	Intra- & inter- annual trends	Above-ground biomass, shoot counts	2.1 mol m <sup>-2</sup> d <sup>-1</sup>	Growing seasonal av	Tropical	Deepwater		Chartrand unpubl. data
US Virgin Islands	~20°C	Growth rate and depth limit	4.4% SI		Tropical	Subtidal		Williams and Dennison (1990)
<b><i>Halophila ovalis</i></b>								
Magnetic Island	Sep-Dec 23°C	Shoot density	5.29±2.2 mol m <sup>-2</sup> d <sup>-1</sup> 8.99±3.11 mol m <sup>-2</sup> d <sup>-1</sup>	49 98	Tropical	Outdoor Experiment	20% loss (80% protection)	Collier, et al. (In Press)
Magnetic Island	Sep-Dec 28°C	Shoot density	5.83±2.58 mol m <sup>-2</sup> d <sup>-1</sup> 9.97±2.67 mol m <sup>-2</sup> d <sup>-1</sup>	28 98	Tropical	Outdoor Experiment	20% loss (80% protection)	Collier, et al. (In Press)
Gladstone	Sep - Dec	Biomass & Shoot density	1.8 mol m <sup>-2</sup> d <sup>-1</sup> 6.5 mol m <sup>-2</sup> d <sup>-1</sup>	16 30	Sub- tropical	Intertidal experiment		Chartrand, et al. (2012)
Moreton Bay	Aug, 22°C	Total biomass (Expt A)	0.1% SI	12	Sub- tropical	Outdoor Experiment	23% loss	Longstaff, et al. (1999)
	Oct, 27°C	Total biomass (Expt B)	0.1% SI	15			63% loss	
	Dec-Jan, 26- 30°C	Total biomass (Expt C)	0.1% SI	14			59% loss	
Gulf of Carpentaria	July-Nov	Total biomass	0.1 mol m <sup>-2</sup> d <sup>-1</sup>	24	Tropical	Intertidal experiment	63% loss	Longstaff and Dennison (1999)
<b><i>Halophila spinulosa</i></b>								
Abbot Point	Oct	Shoot loss No impact found	1.1 mol m <sup>-2</sup> d <sup>-1</sup> 3.2 mol m <sup>-2</sup> d <sup>-1</sup>	30 30	Tropical	Lab		Chartrand et al <i>in prep</i>
Abbot Point	Intra- & inter-annual trends	Above-ground biomass	1.9 mol m <sup>-2</sup> d <sup>-1</sup>	Growing seasonal av	Tropical	Deepwater		TropWATER unpubl. data
Keswick Is (Mackay)	Intra- & inter-annual trends	Above-ground biomass, shoot counts	2.2 mol m <sup>-2</sup> d <sup>-1</sup>	Growing seasonal av	Tropical	Deepwater		TropWATER unpubl. data
Moreton Bay	May-June ~20°C	Root biomass	50 %SI (~14.8 mol m <sup>-2</sup> d <sup>-1</sup> )	≤30	Sub- tropical	Outdoor Experiment	34% loss	Grice, et al. (1996)
<b><i>Halophila tricostata</i></b>								
Keswick Is (Mackay)	Intra- & inter-annual trends	Above-ground biomass, shoot counts	2.2	Growing seasonal av	Tropical	Deepwater	TropWATER unpubl. data	Tropwater unpubl.



**Table 4:** Summary of light thresholds for the colonising/opportunistic *Zostera muelleri* and *Halodule uninervis*

Location	Season/ temperature	Impact	Light intensity	Time to Impact (d)	Zone	Study Location	Degree of impact	Reference
<b><i>Zostera muelleri</i> ssp. <i>Capricorni</i></b>								
Gladstone	Sep – Dec May-June?	Above-ground biomass, percent cover	$\leq 5 \text{ mol m}^{-2} \text{ d}^{-1}$	28 – 42	Sub-tropical	Shading	~40% loss	Chartrand, et al. (Subm.)
		No loss	$\leq 2 \text{ mol m}^{-2} \text{ d}^{-1}$	28 – 42		Intertidal	0% loss	
Gladstone	Sep – Dec	Above-ground biomass, percent cover	$\leq 6 \text{ mol m}^{-2} \text{ d}^{-1}$	14	Sub-tropical	In situ light	No loss	Chartrand, et al. (Subm.)
Gladstone	Sep – Dec 23°C	Shoot density	$2.46 \pm 1.9 \text{ mol m}^{-2} \text{ d}^{-1}$	28	Sub-tropical	Outdoor	20% loss (80% protection)	Collier, et al. (In Press)
			$7.4 \pm 1.9 \text{ mol m}^{-2} \text{ d}^{-1}$	98		Experiment		
Gladstone	Sep – Dec 28°C	Shoot density	$5.43 \pm 1.77 \text{ mol m}^{-2} \text{ d}^{-1}$	28	Sub-tropical	Outdoor	20% loss (80% protection)	Collier, et al. (In Press)
			$10.4 \pm 2.4 \text{ mol m}^{-2} \text{ d}^{-1}$	98		Experiment		
Lake Macquarie, NSW	24, 27, 30°C	Above-ground biomass	$2.0 \text{ mol m}^{-2} \text{ d}^{-1}$	$\leq 84$	Sub-tropical	Indoor	~50% loss	York, et al. (2013)
		No impact found	$4.8 \text{ mol m}^{-2} \text{ d}^{-1}$			Lab	0% loss	
			$1.2 \text{ mol m}^{-2} \text{ d}^{-1}$			Outdoor	27% loss	
Magnetic Island	Mar – May	Shoot density	$4.4 \text{ mol m}^{-2} \text{ d}^{-1}$	46	Tropical	Experiment	36% loss	Collier, et al. (2012b)
			$9.5 \text{ mol m}^{-2} \text{ d}^{-1}$	61			47% loss	
Port Hacking, NSW	Feb – April ~19°C	Biomass	$1.7 \text{ mol m}^{-2} \text{ d}^{-1}$	$\leq 86$	Sub-tropical	Lab	99% loss	Fyfe (2003)
Moreton Bay	Annual	No impact found	$7.2 \text{ mol m}^{-2} \text{ d}^{-1}$				0% loss	
Moreton Bay	Mar – May 23°C	Depth limit of meadow (i.e. MLR)	$10 \text{ mol m}^{-2} \text{ d}^{-1}$	365	Sub-tropical	Subtidal	3-site mean	Longstaff (2002) Dennison and Abal (1999)
			$4.6 \text{ mol m}^{-2} \text{ d}^{-1}$				1 site (considered anomalous)	
Moreton Bay	Mar – May 23°C	Shoot density & Total biomass	$30\% \text{ SI } (\sim 9.25^* \text{ mol m}^{-2} \text{ d}^{-1})$	$\leq 62$	Sub-tropical	Outdoor	60% loss shoots	Abal, et al. (1994)
						Experiment	35% loss biomass	
<b><i>Halodule uninervis</i></b>								
Magnetic Island	23°C	Shoot density, modelled threshold	$3.8 \pm 2.3 \text{ mol m}^{-2} \text{ d}^{-1}$	28	Tropical	Outdoor	No loss	Collier, et al. (In Press)
				98		Experiment	20% loss (80% protection)	
Magnetic Island	28°C	Shoot density, modelled threshold	$4.15 \pm 6.11 \text{ mol m}^{-2} \text{ d}^{-1}$	49	Tropical	Outdoor	20% loss (80% protection)	Collier, et al. (In Press)
				98		Experiment		
Magnetic Island	Mar – May	Shoot density	$0.2 \text{ mol m}^{-2} \text{ d}^{-1}$	46	Tropical	Outdoor Experiment	40% loss	Collier, et al. (2012b)
			$4.4 \text{ mol m}^{-2} \text{ d}^{-1}$	61			39% loss	
Magnetic Island	Summer, >28°C	Percent cover	$9.5 \text{ mol m}^{-2} \text{ d}^{-1}$	74	Tropical	Subtidal	34% loss	Collier, et al. (2012a)
			$4.0 \text{ mol m}^{-2} \text{ d}^{-1}$	$\leq 90$			50% loss in <i>H. uninervis</i> dominated meadow	
Gulf of Carpentaria		Biomass	$0.1 \text{ mol m}^{-2} \text{ d}^{-1}$	38-52	Tropical	Intertidal	~40% loss	Longstaff and Dennison (1999)
		Shoot density					~34% loss	
Moreton Bay	May-June ~20°C	Productivity (g DW $\text{m}^{-2} \text{ d}^{-1}$ )	$50\% \text{ SI } (\sim 14.8 \text{ mol m}^{-2} \text{ d}^{-1})$	$\leq 30$	Sub-tropical	Outdoor Experiment	20% reduction	Grice, et al. (1996)

\*based on conversion using surface light and daily light from the same region, Moreton Bay in Longstaff (2002);  $\leq$  indicates that measures were not made prior to this day

**Table 5:** Light thresholds for the opportunistic *C. serrulata*, *Syringodium isoetifolium* and the persistent *T.hemprichii*.

Location	Season/ temperature	Impact	Light intensity	Time to Impact (d)	Zone	Study Location	Notes	Reference
<b><i>Cymodocea serrulata</i></b>								
<b>Opportunistic occurring in coastal, and reef habitat</b>								
Magnetic Island	Sep – Dec 23°C	Shoot density	NA	28	Tropical	Outdoor Experiment	No loss, no threshold could be calculated	Collier, et al. (In Press)
			NA	98				
	Sep – Dec 28°C	Shoot density	3.61±2.37 mol m <sup>-2</sup> d <sup>-1</sup>	49	Tropical	Outdoor Experiment	20% loss (80% protection)	Collier, et al. (In Press)
			8.63±3.84 mol m <sup>-2</sup> d <sup>-1</sup>	98				
Magnetic Island	Mar – May	Shoot density	0.2 mol m <sup>-2</sup> d <sup>-1</sup>	46	Tropical	Outdoor Experiment	56% loss	(Collier, et al., 2012b)
			4.4 mol m <sup>-2</sup> d <sup>-1</sup>	61				
Moreton Bay	May – June ~20°C	Productivity	9.5 mol m <sup>-2</sup> d <sup>-1</sup>	74	Sub-tropical	Outdoor Experiment	26% loss	(Grice, et al., 1996)
			50% SI (~14.8 mol m <sup>-2</sup> d <sup>-1</sup> )	≤30				
<b><i>Syringodium isoetifolium</i></b>								
Mauritus	24°C	<b>Shoot length</b>		21	Sub tropical	Subtidal	Signif. increase	(Fokeera-Wahedally and Bhikajee, 2005)
	28°C	<b>Shoot length</b>	75% reduction	21			Signif. increase	
	24 and 28°C	<b>Shoot density</b>		70			No effect	
Florida <i>Syringodium filiforme</i>	Annual	<b>Minimum light requirement</b>	24 – 37% SI (8.5 – 13.2 mol m <sup>-2</sup> d <sup>-1</sup> )	365	Tropical	Subtidal	Depth limit	(Kenworthy and Fonesca, 1996)
<b><i>Thalassia hemprichii</i></b>								
<b>Persistent occurring in coastal and reef habitat</b>								
Magnetic Island	Mar – May	No impact -Shoot density	0 0.2 mol m <sup>-2</sup> d <sup>-1</sup>	102	Tropical	Outdoor Experiment	No impact detected <sup>#</sup>	(Collier, et al., 2012b)
Florida <i>Thalassia testudinum</i>		Seagrass depth limit (MLR)	18 – 32% SI (~6.4 – 11.4 mol m <sup>-2</sup> d <sup>-1</sup> )*	Annual	Tropical	Subtidal	Depth limit	(Choice, et al., 2014; Czerny and Dunton, 1995; Dixon, 1999; Tomasko and Hall; Tomasko, et al.)
Florida <i>Thalassia testudinum</i>		Shoot density	16% SI (5.6 mol m <sup>-2</sup> d <sup>-1</sup> )* 13% SI (4.5 mol m <sup>-2</sup> d <sup>-1</sup> )*	365			95% loss 98% loss	(Czerny and Dunton, 1995)

<sup>#</sup> based on statistical re-analysis of data with species separated

\*In Czerny and Dunton Florida ambient light 50% SI = 17.8 mol, 100% SI = 35

## 4. MANAGEMENT GUIDELINES

The following management guidelines are divided into 1) recommended light management thresholds for acute impacts and 2) light guidelines for long-term maintenance of seagrass in recognition that higher light may be required over the long-term (Figure 4). This is based on a synthesis of all known species-specific light data available to the authors at the time of publication relevant to the GBRWHA (see previous section for details).

### 4.1 Recommended management thresholds for acute impacts

Acute thresholds can be applied to short-term threats such as dredging or small-scale developments where the management goal is no physical loss of seagrass leaves or shoots. Recommended acute thresholds are tabulated (Table 6) and discussed in detail in this section. Long-term management thresholds are discussed in the following section.

**Table 6:** Recommended management light thresholds for GBRWHA seagrasses.

<i>Species</i>	<i>Classification</i>	<i>Suggested management threshold (mol m<sup>-2</sup> d<sup>-1</sup>)</i>	<i>Integration time (days)*</i>	<i>Time to impact (days)**</i>	<i>Confidence Score<sup>+</sup></i>
<i>Halophila decipiens</i>	Colonising	2	1	14	3
<i>Halophila ovalis</i> <sup>^</sup>	Colonising	2	7	14	3
<i>Halophila ovalis</i> <sup>^</sup>	Colonising	6	7	28	3
<i>Halophila tricostata</i>	Colonising	2.5	1	14	5
<i>Halophila spinulosa</i>	Colonising	2.5	7	28	4
<i>Zostera muelleri</i>	Colonising/ opportunistic	6	14	28	2
<i>Halodule uninervis</i>	Colonising/ opportunistic	5	14	40	3
<i>Cymodocea rotundata</i>	Opportunistic	6	14	28	5
<i>Cymodocea serrulata</i>	Opportunistic	5	14	50	4
<i>Syringodium isoetifolium</i>	Opportunistic	6	14	28	5
<i>Thalassodendron ciliatum</i>	Persistent	5	14	50	5
<i>Thalassia hemprichii</i>	Persistent	5	14	50	4
<i>Enhalus acoroides</i>	Persistent	5	14	50	5

\*Averaging time used to describe light history and as first signal to trigger management plan

\*\*Time to impact expected and a management plan should be implemented before this time. See section case study for details

<sup>+</sup>Confidence score is detailed in the following table

<sup>^</sup>Species has a two-stage threshold due to species plasticity to growing light conditions. See text for further detail

The recommended acute management thresholds are higher than maximum biological thresholds in order to increase confidence that they will provide protection under acute light stress (Chartrand, et al., Subm). For example, for *Z. muelleri*, the maximum short-term, acute light threshold was  $5.4 \text{ mol m}^{-2} \text{ d}^{-1}$  over 28 d, therefore the recommended management threshold is  $6 \text{ mol m}^{-2} \text{ d}^{-1}$  with an expected time to impact after 28 days.

An integration time of 14 days is recommended for *Z. muelleri* to account for recent light history of the meadow (Chartrand, et al., Subm). In practice, this refers to a rolling average of daily light recorded at the seagrass site, such that each day, the rolling average moves forward by one day to incorporate the most recent light. With recent advances in light measurement and telemetered data (e.g. Vision Environment 2012), daily light can be provided as live updates. The integration time is also a means to track progress towards meeting the target. If the 14-day rolling average falls below the threshold then this initiates a management plan (see case study below). As an impact is expected after 28 days at that light level, a management action is required between 14 days and 28 days. The integration time should also be considered prior to the initiation of the disturbance, therefore, if the integrated light history (14 days) is below the threshold, then the management plan needs to be put in place even prior to commencing the operation.

The time to impact and the integration times are shorter for the sensitive *Halophila* species. In *H. decipiens*, a small, fast-growing colonising (ephemeral) species, abundance is expected to decline after just 14 days below the threshold. Physiological changes, including a draw-down on carbohydrate storage reserves can occur within days (Longstaff, et al., 1999), reducing their resilience. Therefore, an integration time of just 1 day is recommended for *H. decipiens*, and 7 days for *H. ovalis* and *H. spinulosa*. Although *H. tricostata* is probably not as sensitive to light stress as *H. decipiens*, as there is little information available on this species, the more conservative 1-day integration time and 14-day time to impact has been applied.

Two light thresholds have been recommended for *H. ovalis* in recognition that it occupies diverse habitats (with a broad range in light levels) and is highly sensitive to disturbance. The abundance of *H. ovalis* can decline within 12 days at very low light levels; therefore a short-term light threshold is required ( $2 \text{ mol m}^{-2} \text{ d}^{-1}$  over 14 days). However, it frequently occurs in habitats with much higher light levels when  $2 \text{ mol m}^{-2} \text{ d}^{-1}$  is unlikely to be breached, but it can none-the-less remain vulnerable to low light hence an additional management threshold of  $6 \text{ mol m}^{-2} \text{ d}^{-1}$  over 28 days is proposed, and both thresholds should be complied with to avoid loss.

The confidence score is a critical component of the recommended management table as it highlights the degree of certainty that the light threshold will protect seagrass from an acute disturbance (Table 7). Although there is relatively high level of confidence in recommended management thresholds for *Z. muelleri*, a comprehensive assessment of thresholds has been undertaken for just one population (Gladstone Harbour). Therefore, there is insufficient information from other populations to know whether there are population-specific (i.e. genetic), or local environmental effects on light thresholds. Where the confidence is very low (4 – 5), the most conservative (higher light, shorter duration) recommendations have been made from within the group of species (colonising, opportunistic, or persistent). This can be

adjusted through investigations that refine light thresholds and it is expected that such investigations will make thresholds less conservative.

**Table 7:** Confidence criteria table.

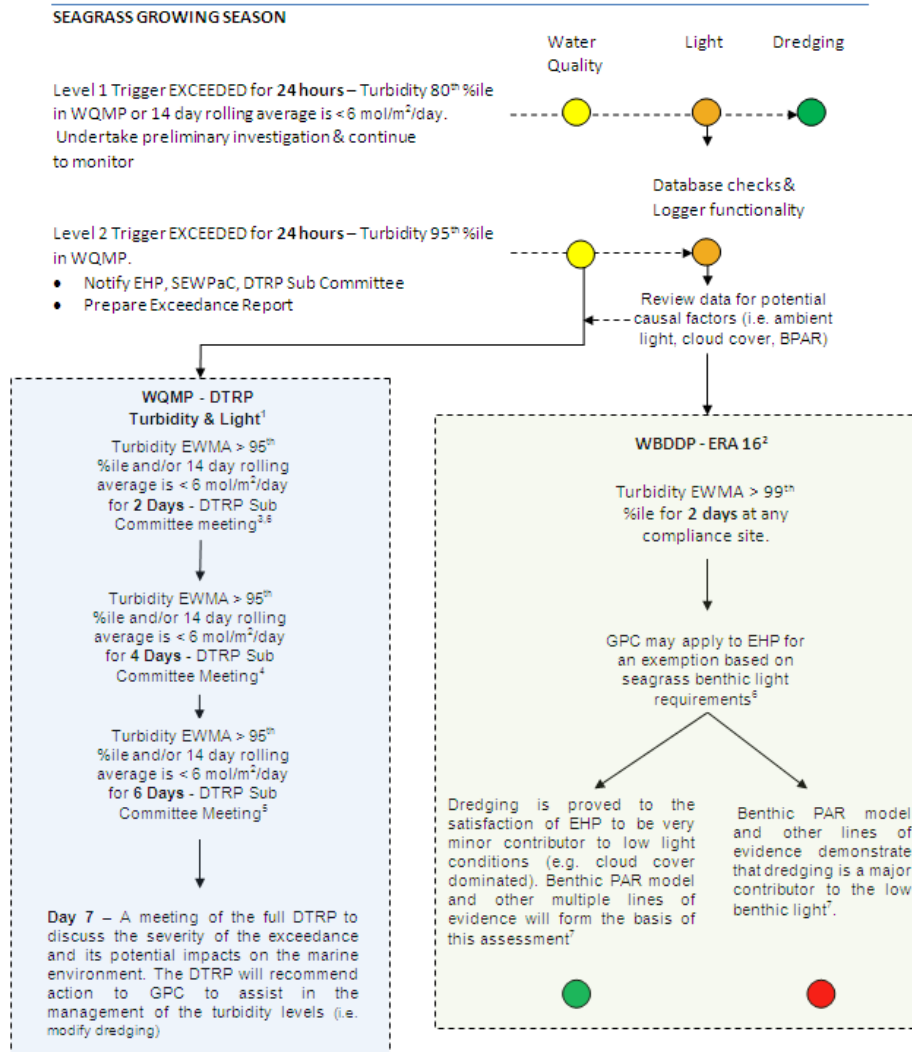
<i>Score</i>	<i>Description of confidence level</i>
1	For multiple populations/locations: A strong understanding of light deprivation effects on the species with laboratory experiments, in situ shading studies and multiple peer-reviewed publications documenting the effects of light stress on the species including studies assessing the interactive effect of temperature stress and nutrients on plant condition. Long term light and seagrass trends also monitored in high risk meadows and used to validate experimental results. While knowledge gaps may still exist, good confidence in setting species-specific light thresholds.
2	For limited locations, but the same as above
3	Somewhat confident but also lacking information in some of the categories above
4	Low confidence but some studies available or light history within seagrass meadows available for analysis
5	Almost no data available, based on expert consensus only

## **4.2 Case study: developing and applying acute light thresholds in Gladstone**

Shading studies were conducted from 2010 to 2013 to simulate the effects of a dredge-related reduction in light from increased turbidity over an intertidal seagrass meadow and to establish an initial range of light required for local seagrass survival. Studies were carried out twice during the growing season (July to January) and twice in the senescent season (February to June) to assess seasonal differences in seagrass response. Results of these studies established significant differences in light requirements between seasons and that *Z. muelleri* required between 4 – 5 mol m<sup>-2</sup> d<sup>-1</sup> during the growing season to survive with significant declines between four to eight weeks if light levels were not maintained above this point (Chartrand et al., Subm). During the senescent season, seagrasses declined naturally without any further impact from experimental reductions in light.



### GPC Dual Water Quality Management Flow Chart



**Figure 5:** Dual water quality management flow chart from Gladstone Western Basin Dredging Program (Dredge Technical Reference Committee, GPC flyer) demonstrating use of turbidity and light management strategies to ensure seagrass condition was maintained during dredging operations.

Findings were resolved into an applied threshold of 6 mol m<sup>-2</sup> d<sup>-1</sup> over a rolling two week average, under which management actions and alerts were proposed to ensure appropriate steps are taken to mitigate seagrass declines. This light management threshold formed the basis of a reactive management strategy successfully implemented to ensure positive ecological outcomes for local seagrasses.

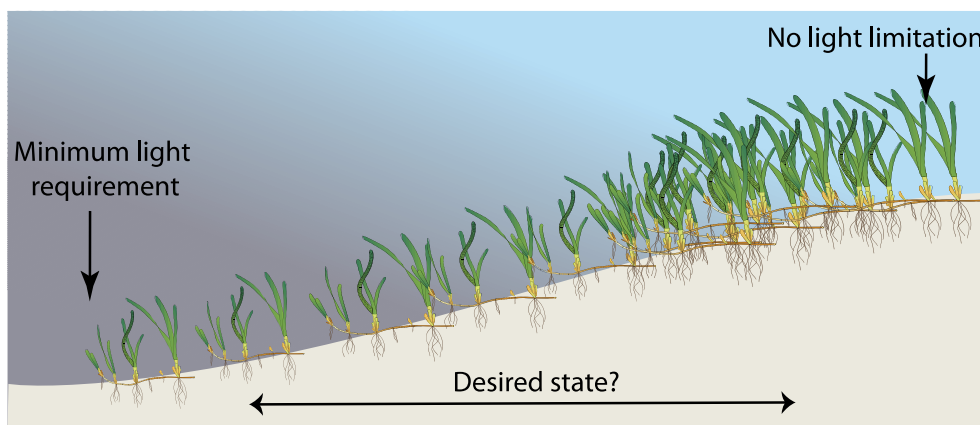
Importantly the management plan incorporated a multi-staged approach where alerts and actions could be implemented within a timeframe that allowed action to occur before actual seagrass declines were likely. The experimental field studies revealed that the earliest declines were recorded from light deprivation at 28 days. The management action plan (Figure 5) had initial management measures at Level 1 (14 days below threshold) to

investigate data and possible causes, escalating at Level 2 after 16 days to bring together the technical management group, and again at 18 days and 20 days with final mitigation action (stop or modify dredge activity to be implemented at 21 days below the threshold, 7 days before the first declines were recorded during the experimental studies.

### **4.3 Management thresholds for long-term maintenance of seagrass**

Maintaining seagrass condition over the long-term may require greater light than set out under the acute disturbance thresholds in order to ensure capacity for plant resilience and longstanding preservation (Unsworth, et al., 2015). Long-term light requirements can be used for setting water quality guidelines (GBRMPA, 2009), to identify management priorities (e.g. Waterhouse, et al., 2012) and to identify current and potential changes in seagrass extent (Brodie, et al., Subm. ; Steward, et al., 2005). A recommended long-term light management threshold is  $\sim 10 - 13 \text{ mol m}^{-2} \text{ d}^{-1}$  (34 – 44% SI) for species other than deepwater species. This threshold should ensure that meadows are not limited by light (Figure 6); however, these recommended thresholds are based on relatively limited evidence. The upper light threshold ( $10.4 \text{ mol m}^{-2} \text{ d}^{-1}$ ) for four species over 98 days (Collier, et al., In Press) and 102 days (Collier, et al., 2012b) was detected using experimental approaches. However, the annual minimum light requirement for *Z. muelleri* meadows was  $10 \text{ mol m}^{-2} \text{ d}^{-1}$  at the depth limit (where it survives, but it is light limited), indicating that this is the minimum amount of light required for long-term maintenance (MLR). Therefore, the error estimates in Collier, et al. (In Press) were used to estimate an upper conservative management threshold from the  $10.4 \text{ mol m}^{-2} \text{ d}^{-1}$  ( $13 \text{ mol m}^{-2} \text{ d}^{-1}$ ). This should ensure that the meadow is maintained in a productive, resilient state, and is not light limited.

The long-term light requirement for deepwater *Halophila* species needs to be based around their growing season. The long-term thresholds are also likely similar to the acute thresholds, however further work is needed to better refine these values. It is also important to recognise that not all deepwater *Halophila* species use the same strategy to ensure meadow longevity. Some, such as *H. decipiens*, rely heavily on local seed banks to regenerate entirely from seed each year while others have little to no seed bank and rely on below-ground energy stores similar to their shallow water counterparts (Chartrand pers obs).



**Figure 6:** Long-term light thresholds can be described as light levels required to ensure meadows are not limited, by their minimum light required, or by the light level required to maintain a pre-determined desired state.

A light threshold which defines the light above which it does not limit seagrass growth is a useful management tool to enable management prioritisation based on its light limitation status. For example in the MMP, the long-term (2008 – 2015) average daily light for 6 out of 22 sites (Figure 7) fall below  $10 \text{ mol m}^{-2} \text{ d}^{-1}$ , and 12 sites fall below  $13 \text{ mol m}^{-2} \text{ d}^{-1}$ , indicating that growth is light limited in these inshore meadows. If a meadow is not light limited, but its' abundance is declining, then it may be necessary to look for other potential drivers of seagrass loss.

Many studies use minimum light requirements (MLR) and  $K_d$  established from seagrass depth limits (SDL), to set water quality targets (Dennison, et al., 1993; Steward, et al., 2005). This is a useful way to set a target for maximum seagrass extent, and it is assumed that meadows shallower than the SDL are protected, and even more productive and abundant (Figure 6). However, the depth limit of meadows can be difficult to define in the GBRWHA because the meadow boundary can be poorly defined, and even mobile (Collier pers obs). Furthermore, many meadows may have their maximum extent defined, not by light, but by a reef crest or a channel with fast flowing tidal currents that prevents meadow establishment. Thus the SDL will not be realised even light is managed for a theoretical MLR and this approach does not provide a realistic strategy to ensure seagrasses are receiving sufficient light.

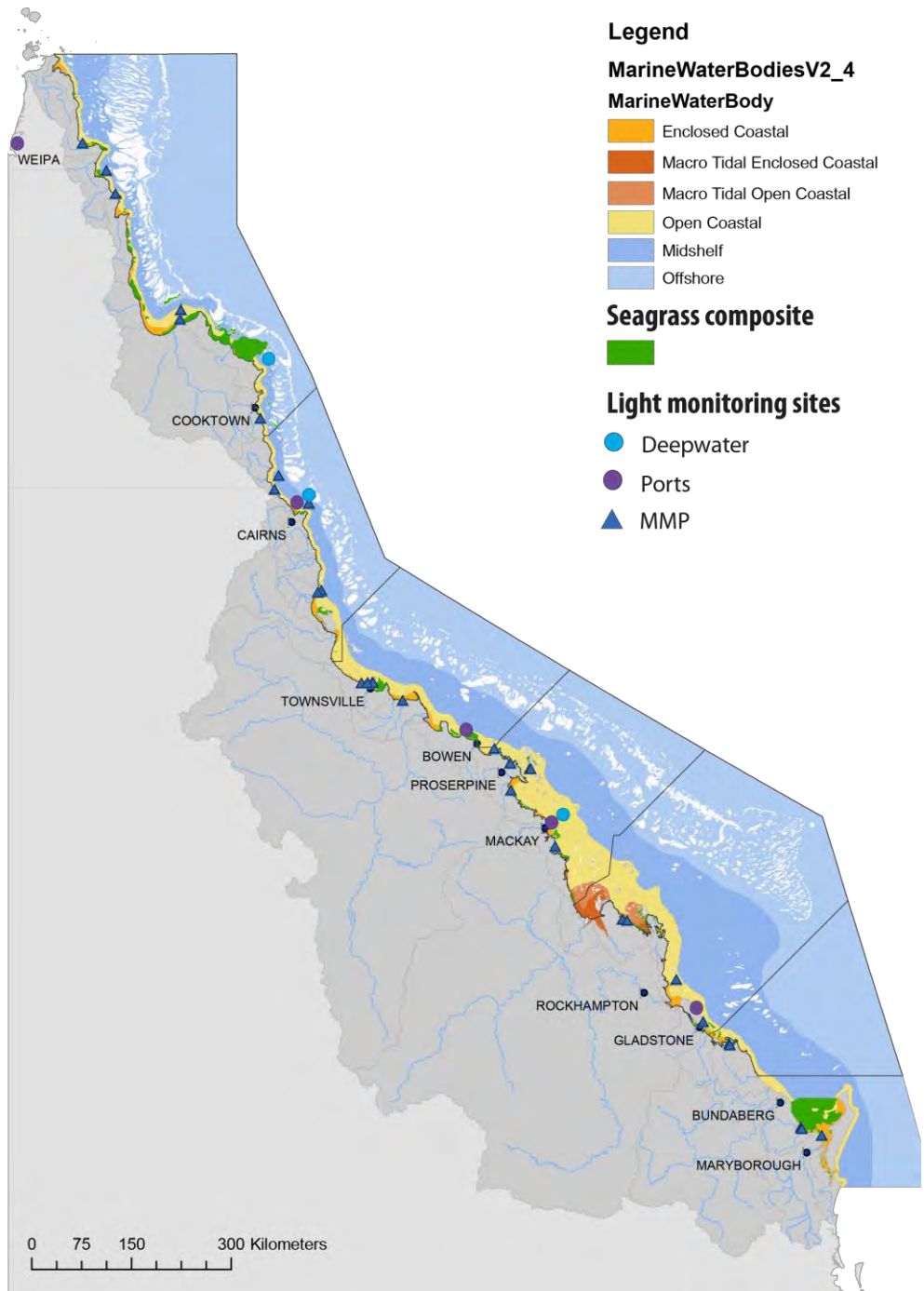
At many locations, the “no light limitation” threshold proposed above ( $10 - 13 \text{ mol m}^{-2} \text{ d}^{-1}$ ) is unlikely to be achieved even with water quality improvement, owing to natural site conditions. Thus, there is a need to refine long-term light thresholds on the basis of the “desired state” for the seagrass meadow i.e. desired seagrass abundance, a goal that has been highlighted as a research priority (Great Barrier Reef Marine Park Authority, 2014; Great Barrier Reef Marine Park Authority and Queensland Government, 2015). Desired state should reflect management goals, and be defined using attributes of healthy, resilient, functioning systems (Foley, et al., 2010; Kilminster, et al., 2015; Unsworth, et al., 2015). This could be quantified in highly variable habitat such as the seagrass meadows of the GBRWHA using knowledge of site history (Carter, et al., 2015) or reference meadows (McKenzie, et al., 2016) together with local light conditions. Relevant light thresholds could then be applied to achieve the characterised desired state and ensure a realistic management goal.



Future development of long-term light thresholds based on the desired state for meadow condition may need to distinguish among water bodies. Most of the existing long-term seagrass abundance and light monitoring data are from open coastal waters, one of the cross-shelf boundaries used to delineate water quality targets (Figure 7) (GBRMPA, 2009). Daily light reaching intertidal meadows in these coastal waters can vary from 0 to 45.8 mol m<sup>-2</sup> d<sup>-1</sup> (Table 8) and have an annual mean ranging from 5.3 to 22.4 mol m<sup>-2</sup> d<sup>-1</sup>. As you increase in depth, the range in light declines (Table 8). In midshelf waters, the peaks in light and mean annual values are higher due to less influence from terrestrial discharge and coastal development. These large-scale water quality patterns likely drive local seagrass acclimation and their capacity to resist or succumb to further reductions in light from ambient conditions.

**Table 8:** Long-term mean daily light (mol m<sup>-2</sup> d<sup>-1</sup>) in seagrass meadows of the GBRWHA separated into water bodies (Figure 7). Site-specific mean annual light is provided as a range with the daily light range in brackets. Superscript numbers indicate the number of sites contributing to the data. From Chartrand unpubl and McKenzie et al 2016.

<i>Habitat</i>	<i>Intertidal</i>	<i>Shallow (&lt;5m)</i>	<i>Deepwater (&gt;10 – 15m)</i>
Enclosed and open coastal water	5.3 – 22.4 (0 – 45.8) <sup>22</sup>	5.9 – 7.0 (0 – 18.9) <sup>2</sup>	2.0 (0 – 6.6) <sup>1</sup>
Mid-shelf water	15.8 – 17.7 (0 – 46.2) <sup>2</sup>	6.5 – 11.1 (0 – 22.0) <sup>2</sup>	2.6 (0 – 8.2) <sup>2</sup>



**Figure 7:** Light monitoring sites within seagrass meadows of the GBRWHA, water bodies, and seagrass distribution (composite).

#### 4.4 Considerations and caveats

The recommended light thresholds were derived from the best available scientific knowledge and expert opinion but are based on relatively limited data with no species achieving the highest confidence score. The following outlines some considerations and caveats when applying the thresholds:

- a potential disturbance should be managed for the most sensitive species present;
- locally-specific guidelines are highly recommended as these capture inherent site conditions (including tidal exposure) that could affect seagrass light thresholds;
- thresholds are based on total photosynthetically active radiation (400 – 700nm), and do not account for spectral quality, which could affect light thresholds;
- there may be a need for seasonally varying light thresholds;
- an assessment of local seagrass condition leading up to an acute disturbance will help identify whether prevailing environmental conditions have altered seagrass health before a light threshold management plan is in place;
- thresholds are average values, while light levels are naturally variable. Peaks in light well above guidelines are likely to be important for some biological processes such as reproduction and meadow expansion;
- based on morphological response (shoot, biomass loss); resilience may be affected earlier/at higher light;
- effects of interactive factors on thresholds are largely unquantified (*in situ* experiments capture naturally changing site conditions);
- thresholds for >3 months are not tested over annual time frames. In particular, these thresholds have not been tested for maintenance of resilience (e.g. capacity to sexually reproduce and expand in biomass and area); and
- measurement of light as an approval condition or for compliance needs to be performed at the seagrass canopy (i.e. benthic light) of the meadow to be protected. Monitoring light at a shallower or deeper depth will not be an accurate application of the management threshold.

## 4.5 Knowledge gaps

Through interrogation of available data in this review, a number of important knowledge gaps have emerged. Further investment in the following areas will improve certainty around the recommended light management thresholds and guidelines:

- definitions of desired state to underpin the development of long-term light guidelines to meet them;
- species with no information on acute or long-term light thresholds;
- location and population-specific thresholds particularly for the most at risk species;
- cumulative effects of other environmental conditions on light thresholds (e.g. temperature, herbicides, sedimentary conditions); and
- investigations into the effect of spectral quality on light thresholds, and an exploration of other light indicators (e.g.  $H_{sat}$ ).

## 5. RECOMMENDATION AND CONCLUSIONS

All available studies on seagrass light requirements were tabulated. This highlighted that there are two critical time-scales for consideration of light thresholds: acute and long-term. These findings were used to recommend acute management thresholds for 12 species occurring in the GBRWHA and which ranged from 2 to 6 mol m<sup>-2</sup> d<sup>-1</sup> depending on species. The thresholds are presented together with an integration time (1 – 14 days), time to impact (7 – 50 days) and confidence score (1 – 5). Deepwater species are the most sensitive to light reduction and therefore they have the lowest light thresholds and shortest integration time and time to impact. Persistent species are the most resistant to light deprivation, but there is very limited data on their light thresholds. There is the greatest amount of data available for *Z. muelleri*, and this was given a confidence rating of 2 (where 1 is the highest). Despite the low confidence for many species, these acute management thresholds are ready for application in compliance guidelines, as the conservative approach taken here should provide protection to seagrass meadows at risk from acute light stress.

Water quality guidelines should be based on long-term light thresholds, but these are not as clearly defined owing to a paucity of data. As an estimate, 10 – 13 mol m<sup>-2</sup> d<sup>-1</sup> is likely to prevent light limitation for strap-bladed species (not deepwater species, which require less light). Defining site-specific desired state and then setting light targets to achieve it will advance the establishment of long-term light thresholds.

The following recommendations can be made on the basis of this synthesis:

- adopt recommended acute light management thresholds;
- establish a clear definition of seagrass desired state within the GBRWHA in order to set long-term light guidelines for managing catchment-scale water quality threats to seagrass health;
- develop locally-specific acute thresholds for application in local management; and
- explore the effects of cumulative impacts and spectral properties (temperature, nutrients, sedimentary conditions), on acute and long-term light thresholds.

## REFERENCES

- Abal, E.G. and Loneragan, N.R. and Bowen, P. and Perry, C.J. and Udy, J.W. and Dennison, W.C., 1994. Physiological and morphological responses of the seagrass *Zostera capricorni* Aschers. to light intensity. *Journal of Experimental Marine Biology and Ecology* 178, 113-129.
- Batley, G.E. and van Dam, M. and Warne, J.C. and Fox, D.R. and Hickey, C.W. and Strauber, J.L., 2014. Technical rationale for changes to the revised method for deriving Australian and New Zealand water quality guideline values for toxicants.
- Brodie, J. and Waterhouse, J. and Schaffelke, B. and Furnas, M. and Maynard, J. and Collier, C. and Lewis, S.E. and Warne, M. and Fabricius, K. and Devlin, M.J. and McKenzie, L. and Yorkston, H. and Randall, L. and Bennett, J. and Brando, V.E., 2013. Relative risks to the Great Barrier Reef from degraded water quality, Synthesis of evidence to support the Reef Water Quality Scientific Consensus Statement 2013. Department of the Premier and Cabinet, Queensland Government, Brisbane.
- Brodie, J.E. and Lewis, S. and Wooldridge, S. and Bainbridge, Z.T. and Waterhouse, J. and Honchin, C. and Holmes, G. and Fabricius, K. and Collier, C.J. and Rasheed, M., Subm. . Setting ecologically relevant targets for river pollutant loads so as to meet marine water quality requirements for the Great Barrier Reef, Australia: A preliminary methodology and analysis.
- Bryant, C.V. and Davies, J.D. and Jarvis, J.C. and Tol, S. and Rasheed, M.A., 2014. Seagrasses in Port Curtis and Rodds Bay 2013: Annual Long Term Monitoring, Biannual Western Basin Surveys & Updated Baseline Survey, Centre for Tropical Water & Aquatic Ecosystem Research (TropWATER) James Cook University, Cairns, pp. 71.
- Burke, M.K. and Dennison, W.C. and Moore, K.A., 1996. Non-structural carbohydrate reserves of eelgrass *Zostera marina*. *Marine Ecology Progress Series* 137, 195-201.
- Carter, A.C. and Jarvis, J.C. and Bryant, C.V. and Rasheed, M.A., 2015. Development of seagrass indicators for the Gladstone Healthy Harbour Partnership report card.
- Chartrand, K.M. and Ralph, P.J. and Petrou, K. and Rasheed, M.A., 2012. Development of a light-based seagrass management approach for the Gladstone Western basin dredging program. Fisheries Queensland, Department of Agriculture Fisheries and Forestry, Cairns, pp. 126.
- Chartrand, K.M. and Bryant, C.V. and Carter, A.B. and Ralph, P.J. and Rasheed, M.A., Subm. Light thresholds to prevent dredging impacts on the Great Barrier Reef seagrass, *Zostera muelleri* ssp. *capricorni*. *Frontiers of Marine Science*.

- Choice, Z.D. and Frazer, T.K. and Jacoby, C.A., 2014. Light requirements of seagrasses determined from historical records of light attenuation along the Gulf coast of peninsular Florida. *Marine Pollution Bulletin* 81, 94-102.
- Coles, R.G. and Rasheed, M.A. and McKenzie, L. and Grech, A. and York, P.H. and Sheaves, M. and McKenna, S. and Bryant, C., 2015. The Great Barrier Reef World heritage Area seagrasses: managing this iconic Australian Ecosystem resource for the future. *Estuarine, Coastal and Shelf Science* 153, A1-A12.
- Collier, C. and Waycott, M., 2009. Drivers of change to seagrass distributions and communities on the Great Barrier Reef: Literature review and gaps analysis, Report to the Marine and Tropical Sciences Research Facility. Reef and Rainforest Research Centre Limited, Cairns.
- Collier, C.J. and Uthicke, S. and Waycott, M., 2011. Thermal tolerance of two seagrass species at contrasting light levels: implications for future distribution in the Great Barrier Reef. *Limnology and Oceanography* 56, 2200-2210.
- Collier, C.J. and Waycott, M. and McKenzie, L.J., 2012a. Light thresholds derived from seagrass loss in the coastal zone of the northern Great Barrier Reef, Australia. *Ecological Indicators* 23, 211-219.
- Collier, C.J. and Waycott, M. and Giraldo-Ospina, A., 2012b. Responses of four Indo-West Pacific seagrass species to shading. *Marine Pollution Bulletin* 65, 342-354.
- Collier, C.J. and Lavery, P.S. and Masini, R.J. and Ralph, P.J., 2009. Shade-induced response and recovery of the seagrass *Posidonia sinuosa*. *Journal of Experimental Marine Biology and Ecology* 370, 89-103.
- Collier, C.J. and Adams, M. and Langlois, L. and Waycott, M. and O'Brien, K. and Maxwell, P. and McKenzie, L., In Press. Thresholds for morphological response to light reduction for four tropical seagrass species. *Ecological Indicators*.
- Czerny, A.B. and Dunton, K.H., 1995. The effects of *in situ* light reduction on the growth of two subtropical seagrasses, *Thalassia testudinum* and *Halodule wrightii*. *Estuaries* 18, 418-427.
- de los Santos, C.B. and Brun, F.G. and Bouma, T.J. and Vergara, J.J. and Pérez-Lloréns, J.L., 2010. Acclimation of seagrass *Zostera noltii* to co-occurring hydrodynamic and light stresses. *Marine Ecology Progress Series* 398, 127-135.
- Dennison, W.C. and Abal, E.G., 1999. Moreton Bay Study: A scientific basis for the Healthy Waterways campaign. HealthyWaterways, Brisbane.
- Dennison, W.C. and Orth, R.J. and Moore, K.A. and Stevenson, C. and Carter, V. and Kollar, S. and Bergstrom, P.W. and Batiuk, R.A., 1993. Assessing water quality with submersed aquatic vegetation: habitat requirements as barometers of Chesapeake Bay health. *Bioscience* 43, 86-94.

- Department of Environment and Heritage Protection, E., 2009. Queensland Water Quality Guidelines, Version 3.
- Devlin, M. and Petus, C. and da Silva, E. and Tracey, D. and Wolff, N. and Waterhouse, J. and Brodie, J., 2015. Water Quality and River Plume Monitoring in the Great Barrier Reef: An Overview of Methods Based on Ocean Colour Satellite Data. *Remote Sensing* 7, 12909.
- Dixon, L.K., 1999. Establishing light requirements for the seagrass *Thalassia testudinum*: An example from Tampa Bay, Florida. In: Bortone, S.A. (Ed.), *Seagrasses: Monitoring, Ecology, Physiology, and Management*. CRC Press.
- Enríquez, S., 2005. Light absorption efficiency and the package effect in the leaves of the seagrass *Thalassia testudinum*. *Marine Ecology Progress Series* 289, 141-150.
- Erftemeijer, P.L.A. and Robin Lewis III, R.R., 2006. Environmental impacts of dredging on seagrasses: A review. *Marine Pollution Bulletin* 52, 1553-1572.
- Fabricius, K.E. and Logan, M. and Weeks, S. and Brodie, J., 2014. The effects of river run-off on water clarity across the central Great Barrier Reef. *Marine Pollution Bulletin* 84, 191-200.
- Fokeera-Wahedally, S.B.M. and Bhikajee, M., 2005. The effects of in situ shading on the growth of a seagrass, *Syringodium isoetifolium*. *Estuarine, Coastal and Shelf Science* 64, 149-155.
- Foley, M.M. and Halpern, B.S. and Micheli, F. and Armsby, M.H. and Caldwell, M.R. and Crain, C.M. and Prahrer, E. and Rohr, N. and Sivas, D. and Beck, M.W. and Carr, M.H. and Crowder, L.B. and Emmett Duffy, J. and Hacker, S.D. and McLeod, K.L. and Palumbi, S.R. and Peterson, C.H. and Regan, H.M. and Ruckelshaus, M.H. and Sandifer, P.A. and Steneck, R.S., 2010. Guiding ecological principles for marine spatial planning. *Marine Policy* 34, 955-966.
- Fyfe, S.K., 2003. Spatial and temporal variation in spectral reflectance: Are seagrass species spectrally distinct? *Limnology and Oceanography* 48, 464-479.
- GBRMPA, 2009. Water quality guidelines for the Great Barrier Reef Marine Park. Great Barrier Reef Marine Park Authority, The Australian Government, Townsville.
- Great Barrier Reef Marine Park Authority, G., 2014. Great Barrier Reef Marine Park Authority Science Strategy and Information Needs 2014-2019. Great Barrier Reef Marine Park Authority, Townsville.
- Great Barrier Reef Marine Park Authority, G. and Queensland Government, Q., 2015. Reef 2050 Long-term Sustainability Plan. Great Barrier Reef Marine Park Authority, Townsville.

- Grech, A. and Coles, R. and Marsh, H., 2011. A broad-scale assessment of the risk to coastal seagrasses from cumulative threats. *Marine Policy* 35, 560-567.
- Grice, A.M. and Loneragan, N.R. and Dennison, W.C., 1996. Light intensity and the interactions between physiology, morphology and stable isotope ratios in five species of seagrass. *Journal of Experimental Marine Biology and Ecology* 195, 91-110.
- Hughes, A.R. and Williams, S.L. and Duarte, C.M. and Heck, K.L. and Waycott, M., 2008. Associations of concern: declining seagrasses and threatened dependent species. *Frontiers in Ecology and the Environment* 7, 242-246.
- Hughes, T.P. and Day, J.C. and Brodie, J., 2015. Securing the future of the Great Barrier Reef. *Nature Climate Change* 5, 508-511.
- Kenworthy, W.J. and Fonesca, M.S., 1996. Light requirements of seagrasses *Halodule wrightii* and *Syringodium filiforme* derived from the relationship between diffuse light attenuation and maximum depth distribution. *Estuaries* 19, 740-750.
- Kilminster, K. and McMahon, K. and Waycott, M. and Kendrick, G.A. and Scanes, P. and McKenzie, L. and O'Brien, K.R. and Lyons, M. and Ferguson, A. and Maxwell, P. and Glasby, T. and Udy, J., 2015. Unravelling complexity in seagrass systems for management: Australia as a microcosm. *Science of the Total Environment* 534, 97-109.
- Longstaff, B.J., 2002. Investigations into the light requirements of seagrasses in Northeast Australia. PhD Thesis. University of Queensland Brisbane, Department of Botany, 152 pp.
- Longstaff, B.J. and Dennison, W.C., 1999. Seagrass survival during pulsed turbidity events: the effects of light deprivation on the seagrasses *Halodule pinifolia* and *Halophila ovalis*. *Aquatic Botany* 65, 101-121.
- Longstaff, B.J. and Loneragan, N.R. and O'Donohue, M.J. and Dennison, W.C., 1999. Effects of light deprivation on the survival and recovery of the seagrass *Halophila ovalis* (R.Br.) Hook. *Journal of Experimental Marine Biology and Ecology* 234, 1-27.
- Martin, K.C. and Marshall, C. and Thompson, A. and McKenzie, L.J. and Muller, J. and Bentley, C. and Paxman, C. and Collier, C. and Waycott, M. and Brando, V. and B., S., 2014. Reef Rescue Marine Monitoring Program synthesis report, 2012-2013. GBRMPA, Townsville.
- McKenna, S.A. and Sozou, A.M. and Scott, E.L. and Rasheed, M.A., 2015a. Port of Abbot Point Long-Term Seagrass Monitoring: Annual Report 2013-2014. Centre for Tropical Water & Aquatic Ecosystem Research, JCU, Cairns, pp. 42.
- McKenna, S.A. and Chartrand, K.M. and Jarvis, J.C. and Carter, A.B. and Davies, J.N. and Rasheed, M.A., 2015b. Port of Abbot Point: initial light thresholds for modelling



- impacts to seagrass from the Abbot Point Growth Gateway project. JCU Publication, Centre for Tropical Water & Aquatic Ecosystem Research, pp. 18.
- McKenzie, L. and Collier, C.J. and Langlois, L. and Yoshida, R.L. and Smith, N. and Waycott, M., 2016. Marine Monitoring Program: Inshore seagrass annual report for the sampling period 1st June 2014 - 31st May 2015. Great Barrier Reef Marine Park Authority, Townsville.
- McMahon, K.M. and Collier, C.J. and Lavery, P.S., 2013. Identifying robust bioindicators of light stress in seagrasses: A review. *Ecological Indicators* 30, 7-15.
- Meager, J.J. and Limpus, C.J., 2012. Marine wildlife stranding and mortality database annual report 2011. I. Dugong, pp. 1-30.
- Negri, A.P. and Flores, F. and Mercurio, P. and Mueller, J.F. and Collier, C.J., 2015. Lethal and sub-lethal chronic effects of the herbicide diuron on seagrass. *Aquatic Toxicology* 165, 73-83.
- Petrou, K. and Jimenez-Denness, I. and Chartrand, K. and McCormack, C. and Rasheed, M. and Ralph, P.J., 2013. Seasonal heterogeneity in the photophysiological response to air exposure in two tropical intertidal seagrass species. *Marine Ecology Progress Series* 482, 93-106.
- Petus, C. and Collier, C.J. and Devlin, M. and Rasheed, M. and McKenna, S., 2014. Using MODIS data for understanding changes in seagrass meadow health: a case study in the Great Barrier Reef (Australia). *Marine Environmental Research* 137, 163-177.
- Qian, S.S. and Cuffney, T.F., 2011. To threshold or not to threshold? That's the question. *Ecological Indicators* 15, 1-9.
- Ralph, P.J. and Durako, M.J. and Enriquez, S. and Collier, C.J. and Doblin, M.A., 2007. Impact of light limitation on seagrasses. *Journal of Experimental Marine Biology and Ecology* 350, 176-193.
- Rasheed, M.A., 2004. Recovery and succession in a multi-species tropical seagrass meadow following experimental disturbance: the role of sexual and asexual reproduction. *Journal of Experimental Marine Biology and Ecology* 310, 13-45.
- Rasheed, M.A. and McKenna, S.A. and Carter, A.B. and Coles, R.G., 2014. Contrasting recovery of shallow and deep water seagrass communities following climate associated losses in tropical north Queensland, Australia. *Marine Pollution Bulletin* 83, 491-499.
- Reusch, T.B.H. and Ehlers, A. and Hämmerli, A. and Worm, B. and Lubchenco, J., 2005. Ecosystem recovery after climatic extremes enhanced by genotypic diversity. *Proceedings of the National Academy of Sciences of the United States of America* 102, 2826-2831.

- Roca, G. and Alcoverro, T. and Krause-Jensen, D. and Balsby, T.J.S. and van Katwijk, M.M. and Marbà, N. and Santos, R. and Arthur, R. and Mascaró, O. and Fernández-Torquemada, Y. and Pérez, M. and Duarte, C.M. and Romero, J., 2016. Response of seagrass indicators to shifts in environmental stressors: A global review and management synthesis. *Ecological Indicators* 63, 310-323.
- Schaffelke, B. and Brinkman, R. and Dobbs, K. and Jones, R. and Kane, K. and Negri, A. and Rasheed, M., 2016. The establishment of a future NESP dredging research investment framework: NESP TWQ Hub project 1.9. Report to the National Environmental Science Programme (NESP) Tropical Water Quality (TWQ) hub. Reef and Rainforest Research Centre Limited, Cairns.
- Schliep, M. and Pernice, M. and Sinutok, S. and Bryant, C.V. and York, P.H. and Rasheed, M.A. and Ralph, P.J., 2015. Evaluation of Reference Genes for RT-qPCR Studies in the Seagrass *Zostera muelleri* Exposed to Light Limitation. *Scientific Reports* 5, 17051.
- Schneider, U., 2013. Issues to consider in the derivation of water quality benchmarks for the protection of aquatic life. *Environmental Science and Pollution Research* 21, 33-50.
- Steward, J. and Virnstein, R. and Morris, L. and Lowe, E., 2005. Setting seagrass depth, coverage, and light targets for the Indian River Lagoon system, Florida. *Estuaries* 28, 923-935.
- Tomasko, D.A. and Hall, M.O., Productivity and biomass of the seagrass *Thalassia testudinum* along a gradient of freshwater influence in Charlotte Harbor, Florida. *Estuaries* 22, 592-602.
- Tomasko, D.A. and Bristol, D.L. and Ott, J.A., Assessment of present and future nitrogen loads, water quality, and seagrass (*Thalassia testudinum*) depth distribution in Lemon Bay, Florida. *Estuaries* 24, 926-938.
- Touchette, B.W. and Burkholder, J.M., 2000. Overview of the physiological ecology of carbon metabolism in seagrasses. *Journal of Experimental Marine Biology and Ecology* 250, 169-205.
- Unsworth, R.K.F. and Collier, C.J. and Waycott, M. and McKenzie, L.J. and Cullen-Unsworth, L.C., 2015. A framework for the resilience of seagrass ecosystems. *Marine Pollution Bulletin* 100, 34-46.
- Vision Environment. 2012. WBDDP Water Quality Monitoring – Methodology Overview: Version 2, July 2012. Gladstone, QLD, 20 pp.
- Waterhouse, J. and Brodie, J. and Lewis, S. and Mitchell, A., 2012. Quantifying the sources of pollutants in the Great Barrier Reef catchments and the relative risk to reef ecosystems. *Marine Pollution Bulletin* 65, 394-406.

- Waycott, M. and McMahon, K. and Mellors, J. and Calladine, A. and Kleine, D., 2004. A guide to tropical seagrasses of the Indo-West Pacific. James Cook University, Townsville, 72 pp.
- Williams, S.L. and Dennison, W.C., 1990. Light availability and diurnal growth of a green macroalga (*Caulerpa cupressoides*) and a seagrass (*Halophila decipiens*). *Marine Biology* 106, 437-443.
- York, P.H. and Gruber, R.K. and Hill, R. and Ralph, P.J. and Booth, D.J. and Macreadie, P.I., 2013. Physiological and Morphological Responses of the Temperate Seagrass *Zostera muelleri* to Multiple Stressors: Investigating the Interactive Effects of Light and Temperature. *PLoS ONE* 8, e76377.
- York, P.H. and Carter, A.B. and Chartrand, K. and Sankey, T. and Wells, L. and Rasheed, M.A., 2015. Dynamics of a deep-water seagrass population on the Great Barrier Reef: annual occurrence and response to a major dredging program. *Scientific Reports* 5, 13167.

# **APPENDIX 1: SYNTHESIS OF LIGHT THRESHOLDS AND MANAGEMENT GUIDELINES FOR END-USERS**

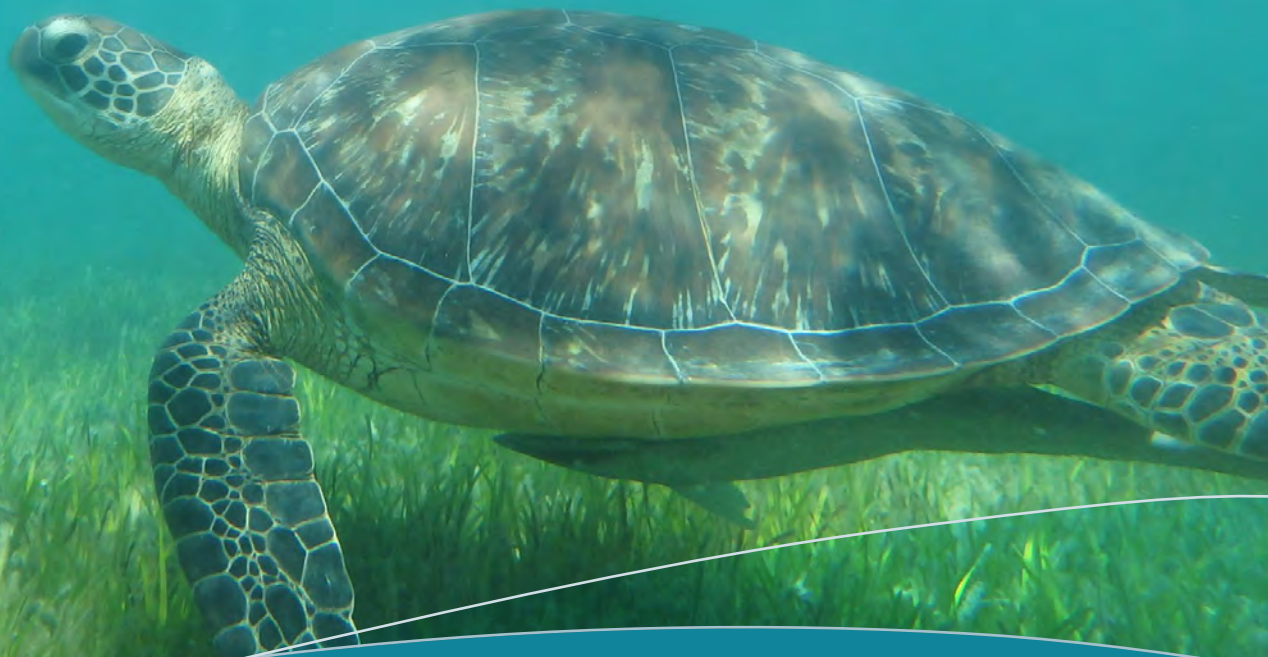


# Light thresholds for managing seagrass meadows at risk from acute water quality impacts

**Catherine Collier, Katie Chartrand, Carol Honchin, Adam Fletcher and Michael Rasheed**

Seagrass meadows are a critical part of the Great Barrier Reef World Heritage Area's outstanding universal value, but they are at risk from declining water quality due to coastal development and terrestrial discharge.

One of the key controlling factors of seagrass growth is the amount of light they receive and in this document we detail appropriate light thresholds for the management of seagrass meadows in the GBR. These recommendations come from a synthesis of recent research funded by the National Environmental Research Programme, Tropical Water Quality Hub (NESP TWQ) project (Project 3.3).





## Background

Water quality affects light reaching seagrass meadows, and light in turn controls the productivity, abundance and distribution of seagrass meadows. If light is reduced, then seagrass abundance will decline with subsequent impacts to the ecological function of the seagrass meadow. Therefore, guidelines that are based on light are recommended as a complimentary management trigger for seagrass meadows at risk from declining water quality. Recen. research into seagrass light thresholds and mature light monitoring programs (>8 years) have provided light thresholds for this synthesis.



## Approach

Available information on seagrass light requirements and thresholds were tabulated for the species occurring in the GBRWHA. These are based on thresholds that cause reductions in seagrass abundance (biomass, shoot density, percent cover). Full method details can be found in the synthesis report Collier *et al.* (2016). This synthesis highlighted two critical time-scales – acute and long-term thresholds – which also correspond to guidelines for acute compliance standards, and water quality guidelines for catchment management, respectively. The information presented here is for the recommended management thresholds for acute light stress (i.e. impacts of up to 3 months duration) and their application in compliance monitoring.

## Findings

Recommended light management thresholds for acute impacts are based on integrated daily light and range from 2 to 6 mol m<sup>-2</sup> d<sup>-1</sup> depending on the species (Table 1). The thresholds are presented in conjunction with:

- Time to impact (7 – 50 days), which is based on the time until seagrass abundance is affected by light below the threshold;
- Integration time (1 – 14 days), which describes both the averaging time for monitoring daily light and a means to track progress towards meeting the light threshold before the time to impact is reached;
- Confidence score, which is defined by the amount of information available for each species (Table 2); and
- Species classification:
  - » **Colonising** — fast-growing and sensitive to disturbances including light reduction
  - » **Opportunistic** — able to adapt to local environmental conditions, with intermediate sensitivity to stress
  - » **Persistent** — form enduring meadows that resist stress but are slow to recover.



Colonising



Opportunistic



Persistent

**Table 1:** Suggested management light thresholds for GBR seagrasses

Species	Classification	Suggested management threshold (mol m <sup>-2</sup> d <sup>-1</sup> )	Integration time (days)*	Time to impact (days)**	Confidence score <sup>+</sup>
<i>Halophila decipiens</i>	Colonising	2	1	14	3
<i>Halophila ovalis</i> <sup>^</sup>	Colonising	2	7	14	3
.....	Colonising	6	7	28	3
<i>Halophila tricostata</i>	Colonising	2.5	1	14	5
<i>Halophila spinulosa</i>	Colonising	2.5	7	28	4
<i>Zostera muelleri</i>	Colonising/opportunistic	6	14	28	2
<i>Halodule uninervis</i>	Colonising/opportunistic	5	14	40	3
<i>Cymodocea rotundata</i>	Opportunistic	6	14	28	5
<i>Cymodocea serrulata</i>	Opportunistic	5	14	50	4
<i>Syringodium isoetifolium</i>	Opportunistic	6	14	28	5
<i>Thalassodendron ciliatum</i>	Persistent	5	14	50	5
<i>Thalassia hemprichii</i>	Persistent	5	14	50	4
<i>Enhalus acoroides</i>	Persistent	5	14	50	5

\* Averaging time used to describe light history and as first signal to trigger management plan

\*\* Time to impact expected and a management plan should be implemented before this time

<sup>^</sup> Two-step threshold applies due to species plasticity, see full synthesis document for details

<sup>+</sup> Confidence score is detailed in the following table

**Table 2:** Confidence criteria table

Score	Description of confidence level
1	For multiple populations/locations: A strong understanding of light deprivation effects on the species with laboratory experiments, in situ shading studies and multiple peer-reviewed publications documenting the effects of light stress on the species including studies assessing the interactive effect of temperature stress and nutrients on plant condition. Long term light and seagrass trends also monitored in high risk meadows and used to validate experimental results. While knowledge gaps may still exist, good confidence in setting species-specific light thresholds.
2	For limited locations, but the same as above
3	Somewhat confident but also lacking information in some of the categories above
4	Low confidence but some studies available or light history within seagrass meadows available for analysis
5	Almost no data available, based on expert consensus only

# Considerations and Caveats

The recommended light thresholds were derived from the best available scientific knowledge, but are based on relatively limited data. Some considerations and caveats to consider when applying the thresholds include:

- Managing for the most sensitive species at a given location;
- Ideally develop locally-specific guidelines as they best encapsulate local growing conditions;
- Incorporate seasonally varying light thresholds where appropriate
- For species with a low confidence score the thresholds are likely to be highly conservative and further study is recommended to improve applicability of the thresholds.

Other important considerations are detailed in Collier *et al.* (2016) and should be reviewed before acute impact guidelines described herein are implemented for management purposes.

A successful light-based management approach for protecting seagrass (*Z. muelleri*) from an acute impact has recently been applied in Gladstone Harbour during a large-scale dredging campaign (Gladstone Ports Corporation 2012). Combined with the species-specific threshold values in this document it provides a template for the application of light thresholds to manage other coastal developments that result in acute impacts to water quality and light.

For further details on the light management thresholds please contact us or see

Collier, C. J., K. Chartrand, C. Honchin, A. Fletcher, and M. Rasheed. 2016. *Light thresholds for seagrasses of the GBR: a synthesis and guiding document*. Reef and Rainforest Research Centre. <[www.nesptropical.edu.au](http://www.nesptropical.edu.au)>

## Contact:

**Dr Catherine Collier:** [Catherine.Collier@jcu.edu.au](mailto:Catherine.Collier@jcu.edu.au); Tel 07 4232 1855

**Katie Chartrand (MSc):** [Katie.Chartrand@jcu.edu.au](mailto:Katie.Chartrand@jcu.edu.au); Tel 07 4232 2027

**Dr Michael Rasheed:** [Michael.Rasheed@jcu.edu.au](mailto:Michael.Rasheed@jcu.edu.au); Tel 07 4232 2010

## Literature used to support the text in this document

Chartrand, K. M., C. V. Bryant, A. B. Carter, P. J. Ralph, and M. A. Rasheed. Subm. Light thresholds to prevent dredging impacts on the Great Barrier Reef seagrass, *Zostera muelleri* ssp. *capricorni*. *Frontiers of Marine Science*.

Collier, C. J., M. Adams, L. Langlois, M. Waycott, K. O'Brien, P. Maxwell, and L. Mckenzie. In Press. Thresholds for morphological response to light reduction for four tropical seagrass species. *Ecological Indicators*.

Erftemeijer, P. L. A., and R. R. Robin Lewis Iii. 2006. Environmental impacts of dredging on seagrasses: A review. *Mar. Pollut. Bull.* 52: 1553-1572.

Gladstone Ports Corporation, G. 2012. *Seagrass light based management: Western Basin dredging and disposal project*. Gladstone Ports Corporation.

Kilminster, K., K. McMahon, M. Waycott, G. A. Kendrick, P. Scanes, L. Mckenzie, K. R. O'Brien, M. Lyons, A. Ferguson, P. Maxwell, T. Glasby, and J. Udy. 2015. Unravelling complexity in seagrass systems for management: Australia as a microcosm. *Sci. Total Environ.* 534: 97-109.

Ralph, P. J., M. J. Durako, S. Enriquez, C. J. Collier, and M. A. Doblin. 2007. Impact of light limitation on seagrasses. *J. Exp. Mar. Biol. Ecol.* 350: 176-193.



This project is supported through funding from the Australian Government's National Environmental Science Program and James Cook University's TropWATER

Centre for Tropical Water and Aquatic Ecosystem Research





[www.nesptropical.edu.au](http://www.nesptropical.edu.au)