

CSIRO PUBLISHING

*Australian Systematic Botany*, 2012, **25**, 404–417<http://dx.doi.org/10.1071/SB12015>

# Phylogenetic revision of Backhousieae (Myrtaceae): Neogene divergence, a revised circumscription of *Backhousia* and two new species

Mark G. Harrington<sup>A,G</sup>, Betsy R. Jackes<sup>B</sup>, Matthew D. Barrett<sup>C,D,E</sup>, Lyn A. Craven<sup>F</sup>  
and Russell L. Barrett<sup>C,D,E</sup>

<sup>A</sup>Australian Tropical Herbarium, James Cook University, Cairns, Qld 4870, Australia.

<sup>B</sup>School of Marine and Tropical Biology, James Cook University, Townsville, Qld 4811, Australia.

<sup>C</sup>Botanic Gardens and Parks Authority, Kings Park and Botanic Garden, West Perth, WA 6005, Australia.

<sup>D</sup>School of Plant Biology, Faculty of Natural and Agricultural Sciences, The University of Western Australia, Crawley, WA 6009, Australia.

<sup>E</sup>Western Australian Herbarium, Department of Environment and Conservation, Locked Bag 104, Bentley Delivery Centre, WA 6983, Australia.

<sup>F</sup>Australian National Herbarium, Centre for Australian National Biodiversity Research, CSIRO Plant Industry, Canberra, ACT 2601, Australia.

<sup>G</sup>Corresponding author. Email: [Mark.Harrington@jcu.edu.au](mailto:Mark.Harrington@jcu.edu.au)

**Abstract.** Backhousieae is a small tribe of Myrtaceae composed of two genera (*Backhousia* and *Choricarpia*) endemic to Australia. Phylogenetic analyses (parsimony, maximum likelihood and Bayesian) were performed on a combined chloroplast (*matK*, *trnH-psbA*, *trnC-psbM*, *trnL-F*, *rps16*) and nuclear (internal transcribed spacers) dataset for all nine species of *Backhousia*, two species of *Choricarpia* and two undescribed species. Backhousieae is monophyletic; however, *Choricarpia* is embedded within *Backhousia*. In all analyses there were four strongly supported clades containing two to four taxa, with no support for relationships among clades, and the relationships of *B. bancroftii* and *B. citriodora* remain unresolved. Bayesian relaxed-clock molecular dating indicated that the Backhousieae has been potentially present in rainforest across Australia for more than 50 million years. The current distribution of *Backhousia* is inferred to be largely due to the contraction of Australian rainforest in the Neogene. New combinations in *Backhousia* are made for the two species of *Choricarpia*, and *B. gundarara* and *B. tetraptera* are described as new species. *B. gundarara* is known only from the Kimberley region of Western Australia, widely disjunct from the remaining *Backhousia* in eastern Queensland and New South Wales, and appears to be a lineage isolated by increasing aridity during the Miocene.

Received 11 May 2012, accepted 29 October 2012, published online 14 December 2012

## Introduction

Rainforests of tropical eastern Australia are renowned for their high levels of plant endemism, whereas the mostly small and fragmented patches of monsoon rainforest in northern Australia contain few local endemics and usually consist of easily dispersed and readily established species with wide distributions (Liddle *et al.* 1994). Within these northern rainforests, the regional endemic species might be indicative of an immigrant flora, with the subsequent speciation being associated with dispersal of Asian elements as the Australian plate collided with or came closer to the Sunda arc in the Early–Middle Miocene (Barlow and Hyland 1988). Alternatively, northern endemics could be remnants of a previously widespread rainforest flora that speciated *in situ* as the rainforests contracted because of increased drying and seasonality during this same period (Martin 2006). In the present study, we trace the evolutionary

history of Australian tropical rainforest as reflected in an endemic tribe of the Myrtaceae.

The Backhousieae Peter G. Wilson (subfamily Myrtoideae) is one of the smallest tribes of Myrtaceae, consisting of two genera previously considered to be endemic to the eastern coastal region of Australia (Wilson 2011). *Backhousia* Hook. & Harv. has 11 species (two undescribed) whereas there are only two species of *Choricarpia* Domin. The two species of *Choricarpia* were both originally described in the genus *Syncarpia* Ten. respectively by Mueller (1859) and White (1919). They are generally found as large or small trees in rainforest, monsoon forest and vine thickets. The tribe has been assessed for essential oils (Brophy *et al.* 1994, 1995), and is particularly known for the lemon-scented volatile leaf oil of *Backhousia citriodora* that is used in the generation of flavours and fragrances, as well as in aromatherapy. A family-wide study based on *matK* data and

limited sampling within Backhousieae (two species of *Backhousia* and one species of *Choricarpia*) had a weakly supported (77% jackknife) *Choricarpia* embedded in *Backhousia* (Wilson *et al.* 2005).

Many *Backhousia* species are recorded as hosts of or susceptible to the fungal plant pathogen *Puccinia psidii sensu lato*, a disease that affects trees and shrubs in the Myrtaceae, with *Choricarpia leptopetala* one of the four species recorded as severely damaged in native bushland (Carnegie and Lidbetter 2012).

In 2001, *Backhousia* sp. Prince Regent (W. O'Sullivan & D. Dureau WODD 42) was first discovered in the Kimberley, Western Australia, ~1800 km from the nearest other species in northern Queensland. There are only two known populations of this species in rainforest and vine thickets surrounded by steep cliffs. In 2010, a mysterious 'myrtaceous' single group of trees with distinctive winged fruits was identified in the Mount Stuart region near Townsville, northern Queensland, an area just south of the current extension of the Wet Tropics rainforest World Heritage Area. A DNA-based scientific investigation of a specimen of these trees by the first author placed them as also an undescribed taxon within Backhousieae.

The aims of the present study were to use molecular data from multiple chloroplast markers, combined with nuclear internal transcribed spacer data, to test the monophyly of the two genera of Backhousieae, and to determine the phylogenetic and biogeographic affinities of the two undescribed species within Backhousieae in a temporal framework, and to describe the new species.

## Materials and methods

### Sampling

All 11 currently described species of Backhousieae (nine from *Backhousia* and two from *Choricarpia*) plus two undescribed *Backhousia* species were sampled from living collections or herbarium specimens (Appendix 1). On the basis of the large Myrtaceae analyses of Biffin *et al.* (2010) and Thornhill *et al.* (2012a), outgroups were drawn from the sister tribe Syzygieae (six species), and the closely related Kanieae (two species), Metrosidereae (two species) and Tristanieae (two species). Sequences of these outgroups were downloaded from GenBank. Composite sequences for some outgroups were used where necessary for more complete sampling across all the markers (Appendix 1).

### DNA extraction, amplification and sequencing

Genomic DNA was extracted using a DNeasy Plant Mini kit (Qiagen Inc., Valencia, CA, USA). We used primers from previously published studies, as follows: ITS – 17SE–26SE (Sun *et al.* 1994) or ITS4–ITS5 (White *et al.* 1990), for *matK*, *trnH-psbA*, *trnC-psbM*, *trnL-F* (Kress *et al.* 2005) and *rps16* (Shaw and Small 2004). PCR amplifications in a total volume of 20  $\mu\text{L}$  contained reagents at a final concentration, as follows:  $1.25 \times$  PCR buffer, 1.8 mM  $\text{MgCl}_2$ , 250  $\mu\text{M}$  dNTPs, 0.5  $\mu\text{M}$  each primer, 4% DMSO and 0.5 mg  $\text{mL}^{-1}$  BSA and template DNA as required. Thermal cycling conditions involved 1 cycle of 2 min at 95°C, followed by 35 cycles of 1 min at 95°C, 30 s at 50°C and 1 min at 72°C, followed by 1 cycle of 2 min at 72°C. PCR products

were purified using Fermentas exonuclease (20 units  $\mu\text{L}^{-1}$ ) (www.fermentas.com, accessed 8 November 2012) and shrimp alkaline phosphatase (1 u  $\mu\text{L}^{-1}$ ) where 10.0  $\mu\text{L}$  of PCR product was added to 4.0  $\mu\text{L}$  of purification agent (2% exonuclease and 20% shrimp alkaline phosphatase); samples then underwent a thermal program (37°C for 20 min, 80°C for 15 min). Amplification primers were also used as sequencing primers. Cleaned PCR products were sequenced in both directions at the Australian Genome Research Facility, Brisbane. Chromatograms were edited with Chromas Pro v.1.4.1 (Technelysium Pty Ltd, Brisbane, Qld).

### Phylogenetic analyses

Sequences were aligned by eye where there was little or no ambiguity, or by using the online version of MAFFT v.6, with the Q-INS-i algorithm for ITS and G-INS-i algorithm for *trnH-psbA* and default parameters (Katoh and Toh 2008). Initially, the nuclear ITS and combined chloroplast (*matK*, *trnH-psbA*, *trnC-psbM*, *trnL-F* and *rps16*) datasets were analysed separately in MrBayes v. 3.1.2 (Ronquist and Huelsenbeck 2003). Combined v. separate partitioning schemes for the plastid sequences were assessed using Bayes factors (Brown and Lemmon 2007) in Tracer 1.5 (Rambaut and Drummond 2007), which resulted in lack of support for using the more complex model. Similarly, the best fitting model for each partition was also selected using Bayes factors comparisons (Kass and Rafferty 1995). Given that there was no evidence of conflicting phylogenetic signal in the separate analyses (branches receiving posterior probabilities of  $\text{PP} \geq 0.95$ ), all subsequent analyses were performed on a concatenated dataset.

For the combined dataset maximum parsimony (MP) jackknife analyses performed in PAUP\*4.0b10 (Swofford 2002) consisted of 1000 replicates containing heuristic searches with 10 random taxon-addition sequences and tree-bisection and reconnection. Maximum likelihood (ML) phylogeny estimation and fast bootstrapping (1000 replicates with the GAMMA approximation, Stamatakis *et al.* 2005) was performed using RAxML v.7.2.7 on Teragrid from the CIPRES Science Gateway (Miller *et al.* 2010), using the partition by genes with a general time-reversal (GTR)+I+ $\Gamma$  model for each partition. Bayesian estimations of the PPs of phylogenetic trees performed in MrBayes v.3.2.1 (Ronquist and Huelsenbeck 2003) had uninformative priors on model parameters, with a GTR+I+ $\Gamma$  substitution model for each of the combined chloroplast and nuclear partition. Four independent runs of 1 million generations, consisting of two separate analyses, with two runs per analyses, sampling every 100 generations, were performed. Convergence of the independent runs to similar stationary distributions for the MCMC samples were assessed in Tracer 1.5 (Rambaut and Drummond 2007) by checking for overlapping joint marginal distributions of sampled parameters.

### Divergence time estimation

Bayesian estimations of divergence times were implemented in BEAST v.1.6.2 (Drummond and Rambaut 2007), with a GTR+I+ $\Gamma$  unlinked substitution model for each of the two partitions, a Yule birth rate prior on branch rates that assumes a constant lineage birth rate for each branch in the tree, and

uncorrelated log-normal distribution for the relaxed-clock model. Four independent runs of 10 million generations, sampling from the prior distribution every 250 generations, were performed. Values of logs of all parameters for all runs were compared in Tracer 1.5 (Rambaut and Drummond 2007) to verify convergence to the same posterior distribution post-burnin and to ensure sufficient effective sample sizes for all parameters ( $ESS > 200$ ). There are no pollen or macrofossils that can be directly attributed to Backhouseiae (Sniderman and Jordan 2011). The only node constraint we applied was a secondary calibration to the stem of Backhouseiae, based on the large Myrtaceae combined macrofossil and pollen-calibrated analysis of Thornhill *et al.* (2012a) that obtained a 95% highest posterior density (HPD) for that node of 35.2–58.17 million years ago and a median of 46.9 million years ago, and is virtually equivalent to ages produced for this node in the analyses of Biffin *et al.* (2010). The analysis of Thornhill *et al.* (2012a) also included a *Myrtaceidites eugenioides* Cookson & Pike fossil pollen-calibrated divergence between Syzygieae and Backhouseiae with an exponential prior distribution (mean 1.952, offset 48.6). We used a log-normal prior (mean 39.2, s.d. 0.17, offset 10.1, mean in RealSpace=true) to incorporate the estimation error of the 95% HPD for the estimated divergence of Backhouseiae from Syzygieae from the analysis of Thornhill *et al.* (2012a).

The tempo of extant lineage accumulation within Backhouseiae (speciation minus extinction) was visualised with a lineage through time (LTT) plot. The logarithm of the number of extant lineages against node heights (mean and 95% HPD) were plotted from the maximum clade-credibility chronogram with all outgroups excluded. A constant birth–death speciation model will return a straight line (Barracough and Vogler 2002), and deviation from a constant rate was tested for by using the  $\gamma$ -statistic, which describes the distribution of nodes within a phylogeny under the assumption that a clade diversifying under a constant rate follows a normal distribution, with a mean of zero and a standard deviation of one. The null hypothesis of a constant rate is rejected if  $\gamma < -1.645$  (speciation-rate decrease towards present) and  $\gamma > +1.645$  (speciation-rate increase towards present) (Pybus and Harvey 2000).

## Results

The aligned concatenated dataset included 25 taxa and was 5428 nucleotides long, including gaps and missing data (nuclear 627 and chloroplast 4801 base pairs). The independent runs of the MrBayes analyses on the combined dataset converged on identical topologies. The maximum clade-credibility chronogram from one of the BEAST analyses is shown in Fig. 1, with PP from Mr Bayes, and ML and MP jackknife values shown on supported nodes. Syzygieae is supported as sister to Backhouseiae (0.96 PP, 75% ML bootstrap); however, in the MP analyses when Kanieae are used to root the analyses, Syzygieae forms a weakly supported clade with Metrosidereae and Tristanieae, which is probably the result of long-branch attraction caused by the restricted sampling among the outgroups. In all analyses, there were four strongly supported clades containing between two and four taxa, with no support for relationships among clades, whereas the relationships

of *B. bancroftii* and *B. citriodora* remain unresolved. The only difference between the analyses within a monophyletic Backhouseiae (1.0 PP, 100% ML bootstrap, 100% MP jackknife) is that *Backhousia citriodora* is weakly supported as sister to the clade containing *B. sp. nov.* from Mount Stuart, *B. myrtifolia* and *B. enata* in the MP jackknife (52%) and MrBayes (0.52–0.57 PP) analyses. The two species of *Choricarpia* are sister to a clade that contains *B. hughesii* and *B. sp.* Prince Regent (1.0 PP, 75% ML bootstrap, 78% MP jackknife). Majority rule consensus topology with branch lengths proportional to the inferred number of changes along that branch from the first two MrBayes runs is shown in Fig. 2.

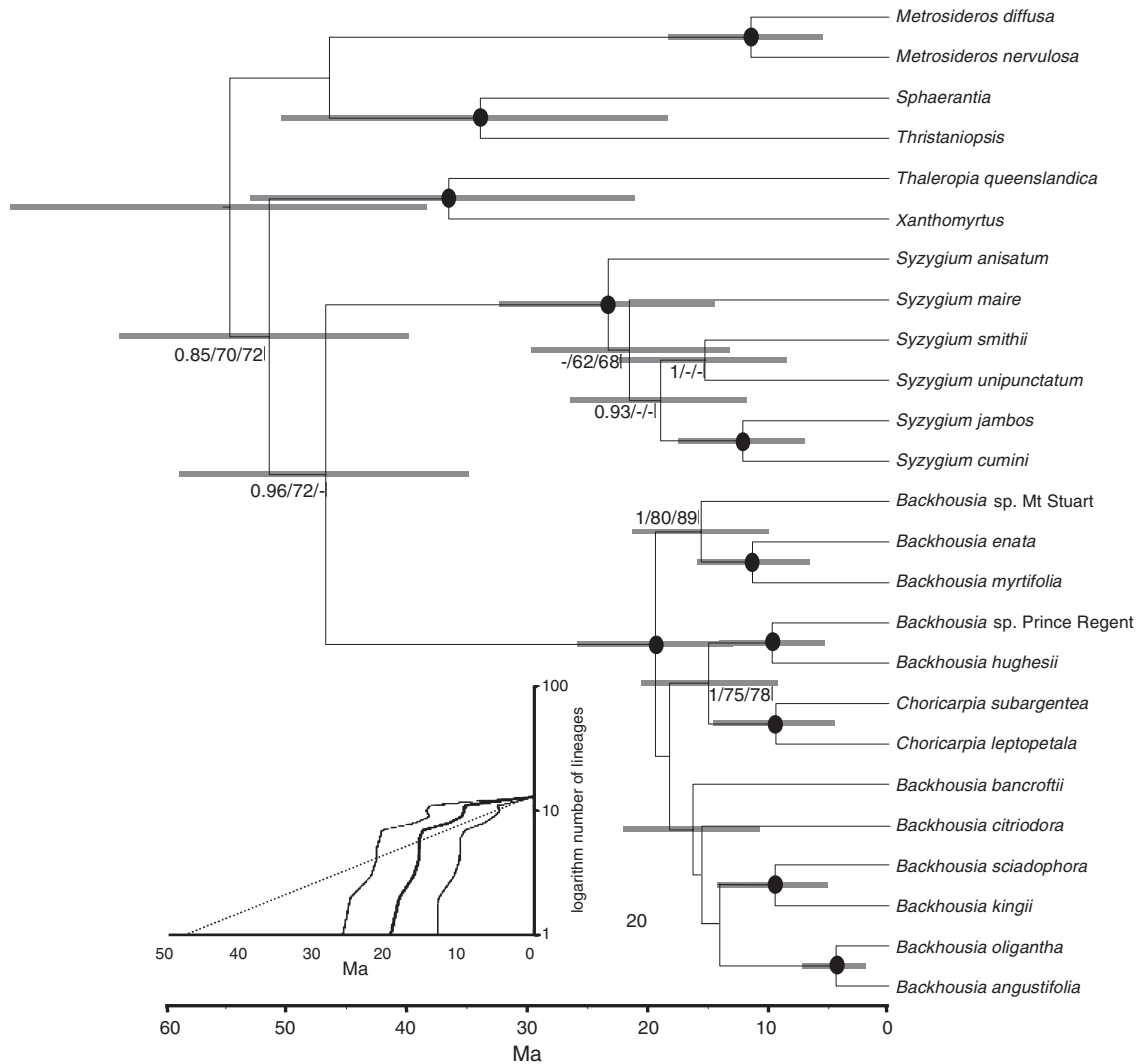
## Diversification of Backhouseiae

The Bayesian uncorrelated log-normal estimation of phylogeny and substitution rates indicated a moderate degree of rate heterogeneity among branches, with the 95% CI coefficient of variation significantly removed from zero (mean 0.36, HPD 0.22–0.50), justifying the use of a relaxed molecular-clock analyses. There was no substitution-rate autocorrelation among related branches in the phylogeny because the 95% CI of the covariance statistic was not significantly removed from zero (mean zero, HPD –0.24–0.28). The effective sample sizes (number of independent samples from the marginal posterior or prior distributions) for all designated nodes of interest in all analyses were  $>200$ , indicating that the MCMC chains were run for adequate lengths.

Diversification (speciation minus extinction) within Backhouseiae has not been constant, as indicated by the variation from the dotted straight line (LTT plot, insert, Fig. 1). There is an increase in net diversification between 10 and 28 million years ago, followed by an easing off from 0 to 10 million years ago. The gamma statistic ( $\gamma = 1.789$ ) confirmed a slowdown in net diversification rate over recent time.

## Discussion

The analyses of the combined nuclear and chloroplast dataset produced a well-supported phylogeny that supplies the basis for a hypothesis of relationships within a monophyletic Backhouseiae that includes the two species of *Choricarpia* embedded within *Backhousia* and sister to *B. hughesii* and *B. sp.* Prince Regent. Further analyses in MrBayes constraining a reciprocally monophyletic *Backhousia* and *Choricarpia* produced a log<sub>10</sub> Bayes factor comparison (3.127), which is strong evidence favouring the unconstrained hypothesis (Kass and Raftery 1995). The potential of a close relationship between *Choricarpia* and *Backhousia* was first alluded to by Ingle and Dadswell (1953) on the basis of timber anatomy and, subsequently, by Bamber (1962) on the basis of bark features, whereas the synapomorphy for inclusion of both genera in Backhouseiae is having cotyledons incumbent to the hypocotyl (Wilson *et al.* 2005). The two species of *Choricarpia* have a globose head of unfused sessile flowers (fused at the base in *C. subargentea*). Whereas the unit inflorescences are heads, conflorescences that are raceme-like do occur. These are borne terminally or axillary, and all seem to end in vegetative buds. Often the pedunculate heads occur in pairs in the axils, a



**Fig. 1.** Timing of the diversification of Backhouseieae. Maximum clade-credibility tree estimated from the Bayesian analyses using BEAST and the concatenated dataset. Node positions indicate mean estimated divergence times and node bars are their 95% highest posterior density. Black circles represent posterior probabilities of 1.00 from MrBayes analyses, maximum likelihood bootstrap and parsimony jackknife >90%. Other values, in the same order, >50% are shown below nodes supported. Graphical insert shows lineage through time plot and 95% confidence interval derived from nodal divergence times obtained from the relaxed-clock estimations from BEAST analyses (solid lines), whereas the dotted line represents a constant diversification rate through time.

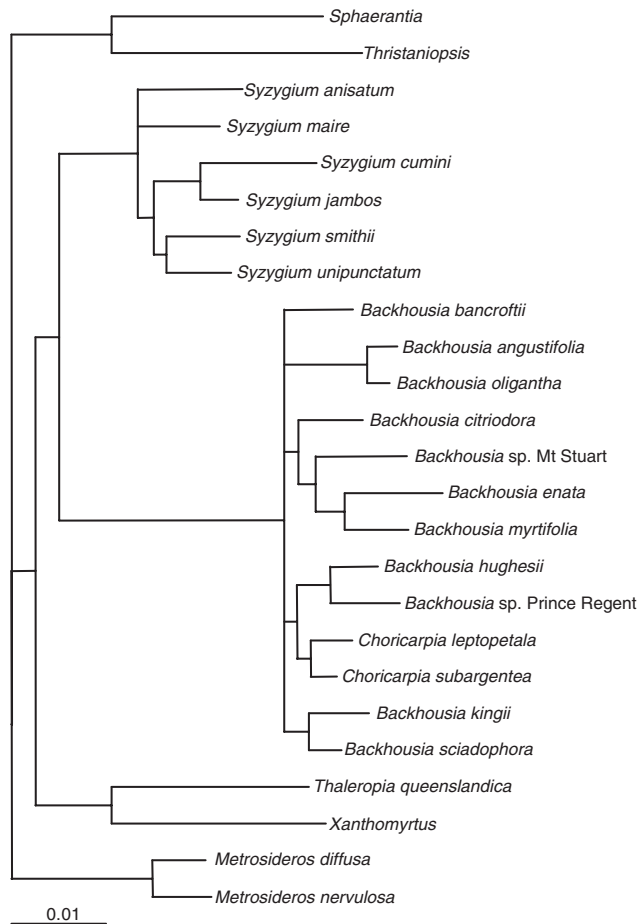
phenomenon that Briggs and Johnson (1979) called accessory branching. Most species of *Backhousia* have cymes or panicles, with only *B. angustifolia* having sessile flowers in heads of usually three flowers. There is a prominent stamen-bearing structure in all species of *Backhousia*, but this structure is not obvious in the two species of *Choricarpia*. The locules of two-locular ovary of *Choricarpia* each contain a solitary ovule with basal placentation. This condition sometimes occurs in the undescribed *Backhousia* from Mount Stuart that may have one or two ovules per locule, whereas *B. sp. Prince Regent* has sub-basal placentation. All other *Backhousia* species have a few ovules generally arranged in a U-shape on a axile placenta. All species of Backhouseieae have dry, indehiscent fruits. Generally, species of *Backhousia* have syncolpate pollen (sometimes weakly parasyncolpate), whereas the grains of *Choricarpia*

are parasyncolpate, with a large apocolpial field (Gadek and Martin 1981). However, Thornhill *et al.* (2012b) reported pollen of both *Backhousia* and *Choricarpia* as parasyncolpate, suggesting variation in the size and prominence of the apocolpial field within *Backhousia sens.lat.*

Within Backhouseieae, the four strongly supported clades generally reflect relationships previously suggested from morphology – *B. enata* sister to *B. myrtifolia* (Ford *et al.* 2005), and *B. kingii* sister to *B. sciadophora* (Guymer 1988).

#### *Evolutionary history and diversification of Backhouseieae*

In the absence of any reliable fossil dates for Backhouseieae, reliance on ages extrapolated from a secondary calibration point for inference of divergence dates means that a cautious approach



**Fig. 2.** Post-stationarity majority-rule consensus tree from the first MrBayes analysis (two runs) of the combined dataset, with branch lengths proportional to the inferred number of changes along that branch.

must be taken to interpreting divergence-time estimations across Backhousieae.

All the tribes of Mytoideae have a fairly old evolutionary history (see fig. 4 of Biffin *et al.* 2010 – stem ages), with the origin of Backhousieae (split from Syzygieae, stem Backhousieae) being dated to 35–59 million years ago (95% HPD). The temporal accumulation of extant lineages within Backhousieae, as reflected in the shape of LTT curve, indicates a striking difference between initial period of 22–33 million years ago (95% HPD) for the long stem branch of Backhousieae, followed by a period from 5 to 20 million years ago (95% HPD) in the Neogene when most of the extant lineages diverged from their sister lineages. The slow-down in the accumulation of extant species from the Pliocene, and there being no evidence of Pleistocene speciation events in this chronogram (95% HPD < 1.8 million years ago), might be the result of extinction of lineages as a result of the dramatic climatic cycling of this epoch, or as a result of cryptic speciation that has not been identified by the current sampling protocol. The pattern of rapid extant lineage radiation in the Oligocene–Miocene in the Australian flora, preceded by a relatively long period of either evolutionary stasis or considerable extinction, i.e. long

stem branches, is also found in other tribes of Myrtaceae, namely, Eucalypteae and Syzygieae (Biffin *et al.* 2010).

Although there is some macro-fossil and pollen evidence that some parts of the Australian continent were covered with rainforest for much of the Late Cretaceous and Tertiary (see Martin 2006, for sites and interpretation), there are many gaps and uncertainties in the fossil record, especially concerning whether there was continuous rainforest across the Australian monsoon tropics. Paleoclimate modelling and paleoecological studies of vertebrate faunas have been equivocal in interpretation of these proxy records for the existence of rainforest in northern Australia in the Early to Middle Miocene (Travouillon *et al.* 2009, 2012; Herold *et al.* 2011; Greenwood *et al.* 2012).

The indehiscent dry fruits of Backhousieae have small seeds (~1–2 mm long) and, although relying on abiotic dispersal mechanisms, do not appear to have any specific adaptations for wind- or water-dispersal and, generally, fresh seed is required for successful germination (Floyd 1989). The presence of two isolated populations of *B. sp.* Prince Regent from Western Australia that are sister to a rainforest-restricted *B. hughesii* from the Wet Tropics of far-northern Queensland is consistent with the proposition for the continued distribution of rainforest across the top of Australia in the Eocene. The now disjunct distribution is possibly the result of severe fragmentation of rainforest in the Neogene as a result of drying of the continent, in particular the development of savanna grasslands in north-western Australia in the Late Miocene (Kershaw *et al.* 1994; Martin 2006), with the geographic isolation promoting speciation. *Backhousia sp.* Prince Regent is the only endemic species to be identified from the Kimberley rainforest fragments to have a sister lineage in eastern Australian rainforests. *Myrsine kimberleyensis* Jackes and *Hibiscus peralbus* Fryx. are the only other Kimberley-endemic rainforest species so far reported (Kenneally *et al.* 1991; Jackes 2005). Both species require further molecular work to explore their origins; however, at least *M. kimberleyensis* has an apparently close sister species in the Northern Territory and further relatives in eastern Australia (Jackes 2005). The remainder of the Kimberley rainforest flora is composed of species widespread in tropical Australia (Kenneally *et al.* 1991). *Backhousia sp.* Prince Regent occurs in the highest-rainfall zone of the Kimberley (~1400 mm year<sup>-1</sup>) and at the base of large escarpments that are likely to have provided a stable environment from water seepage. These factors may have assisted the persistence of this species in the Kimberley, despite increasing aridity during the Neogene.

There is very little evidence from other dated molecular phylogenies that is congruent with the temporal disjunction described above. There is a comparatively congruent disjunction between the northern Australian rainforest species in the Eucalypteae, with the Arnhem Land monotypic endemic *Allosyncarpia ternate* S.T.Blake being diverged from monotypic Wet Tropics endemic *Stockwellia quadrifida* D.J.Carr, S.G.M. Carr & B.Hyland, and two species of *Eucalyptopsis*; however, this is dated to the Oligocene (30–25 million years ago, Ladiges *et al.* 2003; 37–35 million years ago, Crisp *et al.* 2004). Other species disjunctions between Northern Territory rainforest taxa and species from rainforest in the Wet Tropics or McIlwraith Ranges in far-northern Queensland are generally more recent

and are usually within fleshy-fruited clades, such as e.g. Annonaceae – *Uvaria* 2–0 million years ago (Zhou *et al.* 2012); Arecaceae – *Carpentaria acuminata* (H.L.Wendl. & Drude) Becc/*Wodyetia bifurcata* A.K.Irvine 4 million years ago (Savolainen *et al.* 2006). Further molecular-dating studies are needed to determine whether patterns and timing of disjunctions are congruent across multiple taxa with similar dispersal syndromes.

The major diversification of extant Backhousieae, as identified in the LTT plot, took place within the Neogene (14–24 million years ago), with a slowdown in diversification from then to the Present. There is a sister species relationship consistent with the possibility of rainforest contraction on the eastern coast of Australia within a similar time period to the northern disjunction. The Wet Tropics narrow endemic *B. enata* split from *B. myrtifolia* 7–16 million years ago and are now geographically separated by over 1000 km, with *B. myrtifolia* current distribution extending from Fraser Island in Queensland to the temperate rainforests at Bega in southern New South Wales. The sister to these two species is an undescribed *Backhousia* that is now found only in a fire-protected gully on Mount Stuart, Townsville, just outside the southern extent of the current Wet Tropics rainforests.

The low diversification rate in Backhousieae (13 species) compared with that in its sister clade, the predominantly Australasian rainforest Syzygiaceae (1189 species), has been shown to be correlated with differences in dispersal ability (dry fruit, abiotic dispersal *v.* fleshy fruit, biotic dispersal), with the latter being a key innovation for rainforest Myrtaceae (Biffin *et al.* 2010).

### Taxonomic treatment

Morphological and molecular comparison with other *Backhousia* species confirms that the two new species are typical members of *Backhousia*, being clearly differentiated from other species by a combination of morphological features, and both are described as a new species below. New combinations in *Backhousia* are also made for the two species of *Choricarpia*.

#### *Backhousia gundarara* M.D.Barrett, Craven & R.L.Barrett, *sp. nov.*

Shrub or small tree up to 7 m, bark smooth to base. Mature branchlets terete. Leaves opposite, petiolate, 17–35 × 11–24 mm. Inflorescence thyrsoïd, of opposite dichasial cymes in leaf-like bract axils, each dichasial cyme with (1)2–9 flower clusters, each flower cluster with 4–15 flowers per cluster. Hypanthium stipe 0.5–1.5 mm long, 0.4–0.6 mm in diameter. Flowers four-merous. Calyx lobes scarcely dimorphic.

*Type:* Western Australia: Northern Botanical Province: Caroline Range, M.D. Barrett & R.L. Barrett MDB 2885, 27 March 2010. *Holotype:* PERTH 08309574; *isotypes:* BRI, CANB.

*Backhousia* sp. Prince Regent (W. O'Sullivan & D. Dureau WODD 42) (Western Australian Herbarium, in *FloraBase*, available at <http://florabase.dec.wa.gov.au>, accessed 14 February 2011).

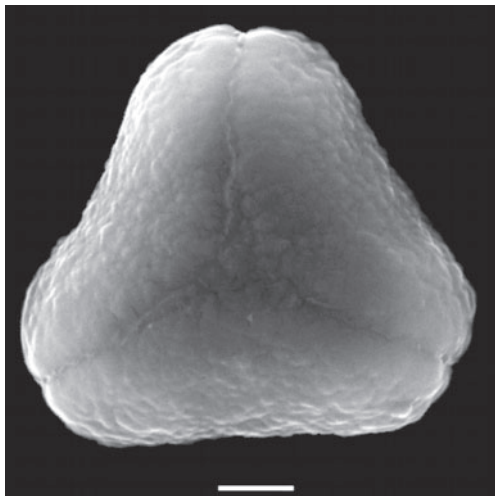
Single- to multi-stemmed shrub or small tree up to 7 m high, often with coppice shoots and smaller juvenile plants with suckering and self-layering shoots; trunk diameter up to

~20 cm, buttresses absent; bark completely deciduous to base, smooth, peeling and somewhat mottled dark reddish-brown over orange-cream; ultimate branchlets almost smooth with very thin, appressed or lifting flaky grey to greyish-brown bark; indumentum uniformly puberulent on most parts (branchlets, petioles, lower leaf blade, inflorescence axes, stipes, hypanthia, calyx lobes and petals), of ascending, uniseriate, whitish hairs ~0.1–0.4 mm long; branchlets flattened to slightly 4-ribbed when young, ±terete when older, puberulent with hairs up to 0.4 mm long, but mostly 0.1–0.2 mm long, dotted with sessile emergent and embedded glands. Stipules caducous, subulate, ~0.3–0.4 mm long. Cataphylls not seen. Leaves simple, opposite–decussate; petioles 2.0–4.5 mm long, 0.4–1.0 mm wide, channelled on upper surface, glandular, densely clothed in white ascending hairs when young, becoming sparsely hairy in age. Lamina ovate to elliptic or sometimes broadly ovate, 17–35 × 11–24 mm, slightly to distinctly discolorous, both surfaces hairy; abaxial surface when young with moderately dense, ascending white hairs on side, becoming dense and ascending on midvein, in age becoming sparsely hairy; adaxial surface initially sparsely ascending-hairy becoming dense on midvein, becoming glabrescent or glabrous, sometimes subglossy, with dense, prominent oil glands on both surfaces, base broadly cuneate to rounded, apex obtuse to broadly acute, not or very weakly and abruptly acuminate, margin flat or slightly recurved, entire to crenate; midvein plane or slightly sunken above, raised below; secondary venation conspicuous, with (5–)10–12 lateral veins each side of midvein at ~50–60°, only slightly more prominent below than above; tertiary venation inconspicuous, reticulate; intramarginal vein complete, 0.5–2.0 mm from the margin, indented to slightly looping at junction with lateral veins. Inflorescences terminal/subterminal and not or shortly exceeding leaves at anthesis (but becoming distinctly axillary after fruiting as terminal shoot grows out), thyrsoïd, composed of a dichasial cyme in each axil of distal 1–3 leaf-like bracts, dichasia up to 75 × 30 mm, each dichasium with 1 or 2 orders of branching and terminated by (1–)2–9 flower clusters (never single flowers), all flowers in a cluster arising from a slightly expanded node, 4–15 flowers per cluster but many soon aborting, 6–25 (or probably more) flowers maturing in an inflorescence; primary inflorescence axis 6–42 mm long (rarely once-branched close to base), somewhat compressed in lower part, shallowly and irregularly angled and grooved above (not terete), moderately densely hairy with white hairs 0.1–0.25 mm long; lateral branches (0–)1–2, 1.0–9.5 mm long, 0.5–0.8-mm diameter, indumentum and section as primary branches; bracteoles linear-spathulate, 0.7–1.5 mm long, brown, densely hairy with white hairs ~0.1–0.15 mm long, apex very narrowly cucullate-obtuse, but soon drying, brown and dry at anthesis, caducous. Flowers white, epigynous, 4-merous; hypanthium stipe 0.5–1.5 mm long, 0.4–0.6-mm diameter, not filiform, gradually tapering into hypanthium proper, with indumentum as hypanthium; hypanthium stipitate, urceolate, 4.0–6.0 mm long, 2.4–2.7 mm wide, terete in section, not ribbed, clothed in fine moderately dense pale unicellular hairs over outer surface, the hairs white, mostly ~0.2 mm long, but sparse hairs ~0.4 mm long, emergent from main indumentum; calyx lobes 4, subequal, the outer pair slightly larger than inner pair, oblong to obovate, outer pair 1.5–1.9 mm long, 1.4–1.7 mm wide, inner pair 1.4–1.5 × ~1.2–1.4 mm, flat to slightly cucullate, apices

obtuse, emarginate or subtruncate, abaxial surface densely hairy as hypanthium, adaxial surface glabrous or sparsely hairy in basal 1/2–2/3, moderately densely hairy with white appressed-ascending hairs ~0.3 mm long in upper 1/3–1/2, persistent in fruit, not obviously accrescent in fruit; oil glands sparse, conspicuous; petals 4, suborbicular to ovate, 1.5–2.0 mm long, 1.4–1.7 mm wide, with a short claw 0.2–0.3 mm long, flat to slightly cucullate, conspicuously hairy on both surfaces, especially in central–lower 2/3 of abaxial surface where long white ascending hairs 0.5–0.7 mm long, shorter and sparser elsewhere, few to several scattered oil glands present especially near base, margin entire, becoming erose as aging, caducous after anthesis. Stamens 57–59 in 2 whorls (only 3 counted from a single inflorescence), filaments free,  $\pm$ dimorphic, inner series 2.0–3.5 mm long, outer series 4.0–5.5 mm long, ~0.1-mm diameter, glabrous, anthers  $\pm$ medifixed, versatile, ~0.4  $\times$  0.35–0.4 mm, 2-celled, dehiscing laterally by slits as long as the anther cells, apical gland prominent, free, subglobose, slightly protruding above level of anthers, connective not swollen, pollen ~13  $\mu$ m, weakly parasyncolpate, oblate, triangular in polar view, verruculose (Fig. 3). Style central, filiform, straight, ~5.5 mm long, ~0.5-mm diameter at base, gradually tapering to apex, hairy, the hairs white to colourless, up to 4.0 mm long, moderately dense in basal ~1/3, becoming sparse over central third, apical third of style with only a few scattered hairs, stigma not expanded, minutely papillose; ovarian region 2.0  $\times$  1.75 mm (ovary cavity ~0.8 mm wide), obovate, adnate to hypanthium for whole length, 2-locular, ovules 5–7 per locule, placentation sub-basal. Nectaries absent. Fruit dry, indehiscent, enclosed in the hypanthium, 6–7  $\times$  4.5–5.0 including persistent calyx lobes, 4–5  $\times$  2–3 excluding calyx lobes, calyx lobes  $\pm$ ascending, style persistent. Seeds (immature) comma-shaped; testa not seen (Figs 3, 4).

#### *Additional specimens examined*

Western Australia. Northern Botanical Province: Prince Regent River Reserve, Gundarara Creek, *W. O'Sullivan & D. Dureau WOODD 42*, 18



**Fig. 3.** Scanning electron microgram of pollen of *Backhousia gundarara*, *sp. nov.*, from type specimen. Scale bar = 2  $\mu$ m.

August 2001 (PERTH, CANB); Caroline Range, *G. & N. Sankowsky Sanko 2255*, 16 September 2003 (PERTH).

#### *Distribution and habitat*

Known only from two locations near the upper reaches of the Prince Regent River, in each case associated with cliffs. The type population occurs in rainforest at the base of a sandstone cliff, at the junction with a basalt layer. The entire rainforest patch of the type location was searched in 2007 and 2008; taking clonality into account, we estimate fewer than 20 plants at this site; others have reported finding up to 50 suckers (probably mostly clones) at the same site. The second population occurs in sand over sandstone along ledges elevated above the floor of a gorge (*W. O'Sullivan*, pers. comm.), and reported to be 'frequent but restricted'. At the type locality, plants are completely fire protected, occurring well away from the margins of the rainforest patch that is sometimes fire-damaged. Plants at the second site would also be substantially fire-protected.

#### *Phenology*

Appears to flower for a short period during March–April. The only collection in anthesis was made in late March; fruits have been collected in early May (very old fruit in August); no inflorescences or buds were observed in late January.

#### *Etymology*

The species epithet comes from an Aboriginal name associated with the area where one of the populations was found.

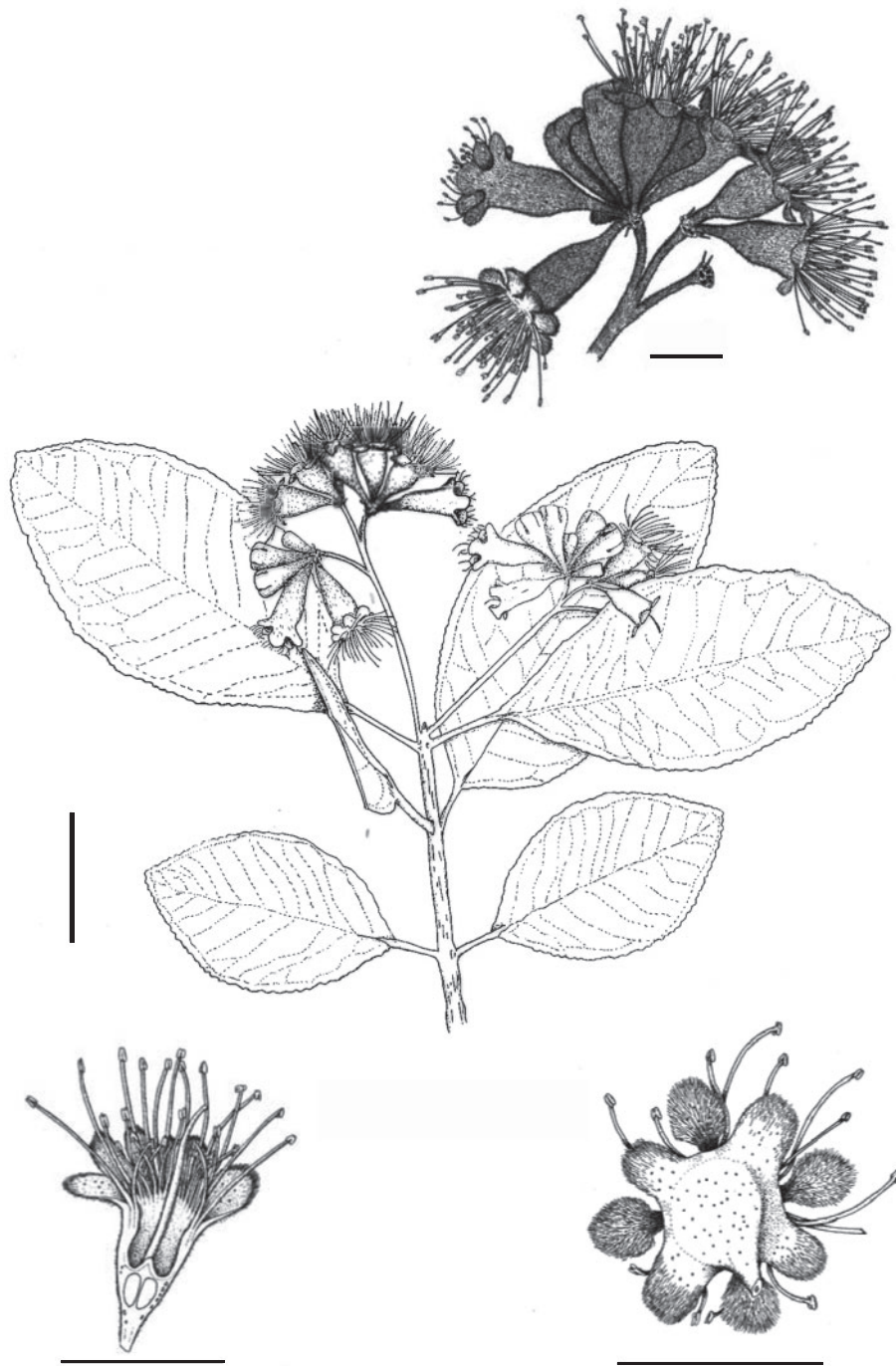
#### *Conservation status*

Apparently highly restricted in distribution, and known only from small, fire-protected pockets. Currently listed as 'P2 – Poorly known taxa' under the Western Australian Department of Environment and Conservation (DEC) system of conservation codes for Western Australia. Further surveys are required to assess distribution, threats and monitor stability, because the upper Prince Regent River area contains many unsurveyed deep gorges and rainforest pockets that could harbour *B. gundarara*.

#### *Notes*

*Backhousia gundarara* was first collected in August 2001 when two amateur botanists (*D. Dureau* and *W. O'Sullivan*) hiking through the upper Prince Regent River area of the Kimberley region discovered an unusual Myrtaceous tree resembling a guava, with smooth bark and opposite leaves. None of the plants was flowering; however, a lengthy search found a few old flowers (*W. O'Sullivan*, pers. comm.). This collection was divided between PERTH and CANB, but remained unplaced, in part because of the poor condition of the flowering material.

In September 2003, *G. & N. Sankowsky* discovered a small shrub in rainforest, also near the upper Prince Regent River. Although sterile, it was immediately recognised as a species of *Backhousia*. This specimen was again sent to PERTH and CANB. *Lyn Craven* agreed with the identification and asked *M. & R. Barrett* to collect fertile material during the wet season, the typical flowering season for a tropical *Backhousia*.



**Fig. 4.** *Backhousia gundarara*, *sp. nov.*, from type specimen. Scale bars = 1 cm (centre), 5 mm (remainder). Del. Nadine Guthrie (PERTH).

The Sankowsky location was revisited by M. Barrett and R. Barrett in January 2007, when plants were sterile, again in late April 2008, when fruits were present, and finally in March 2010, when a single branch bearing fresh flowers was finally located.

In the key to *Backhousia* species presented in Ford *et al.* (2005), *B. gundarara* would key with *B. oligantha* A.R.Bean at

Step 6. It differs from *B. oligantha* in having more flowers per inflorescence (6–25 in *B. gundarara* v. 1–3 in *B. oligantha*), longer peduncles (6–46 mm long v. 1–3 mm in *B. oligantha*),  $\pm$ equal calyx lobes v. decidedly unequal in *B. oligantha*, shorter hypanthium stipes (0.5–1.5 mm long in *B. gundarara*, v. 4–8 mm long in *B. oligantha*) and broader leaves (11–14 mm wide v. 4.5–7 mm wide in *B. oligantha*).



The inflorescences in the WODD specimen are in very old fruit, whereas inflorescences are distinctly axillary, more branched and considerably longer than in the type population. However, too little fertile material is available from either population to assess the significance of this variation.

***Backhousia tetraptera* Jackes, sp. nov.**

*Backhousia tetraptera* is distinguished from other species by the four-angled perigynium associated with the flower and fruit. In mature fruits the inflated perigynium has four prominent wings.

*Type:* Queensland. North Kennedy District: Mount Stuart, Townsville, *J.W. Elliott JE13 & K. Townsend*, 6 February 2012. *Holotype:* CNS 136890; *isotypes:* BRI, CANB, K, MO, NSW.

Tree up to 15 m tall, but usually 5–8 m tall, single- to multi-stemmed, coppicing; bark flaky, thin, grey, becoming mottled grey–brown to pink; lenticels on twigs inconspicuous, uniseriate hairs on new growth, 0.1 mm long; subrhynchium layer green, blaze pale brown with pale stripes. New growth red–purple; growth of new shoots proleptic. Stipules narrowly triangular up to 0.2 mm long, soon caducous. Leaves simple, opposite; petiole 6–8 mm long, channelled on adaxial surface, green to dark pink, if coloured, then this usually extends for some distance along the midrib, sparsely pubescent. Lamina lanceolate to elliptical, 5.5–9 cm long, 1.5–3.8 cm wide, weakly discolorous, glabrous, apex acute to acuminate, base cuneate, margins entire, often undulating; midrib on adaxial surface usually flat, on abaxial surface slightly raised, 10–12 lateral veins each side of midrib, angle of 30–45°; intramarginal vein 1 mm from margin. Oil glands visible on both surfaces of fresh leaves as bumps; stomata present only on abaxial surface. Juvenile leaves with petiole 1 mm long, lamina ovate to orbicular, up to 3 cm long, red–purple, when dry oil glands appear as pustules on adaxial and abaxial surfaces. Inflorescences terminal or axillary in upper axils, dichasial with 2–4 branches; 10-flowered. Peduncle filiform ~6 mm long, papillose; bracteoles minute, caduceous; pedicels filiform, 1 mm long, papillose. Flowers with perigynium 4-angled, 2 × 1 + mm pubescent on both surfaces; calyx-lobes 4, with 2 unequal pairs, outer pair 1.5 × 1.5 mm, inner pair ~1 × 1 mm, both surfaces shortly pubescent, glands visible; petals 4, white, 2 mm long including claw, ~1.5 mm wide, papillose to pubescent on both surfaces, glands occasionally present. Stamens 56–65 in 2 whorls, filaments free, length varies within the one flower from 3 to 6 mm long, anthers dorsifixed, versatile, 0.25 mm long, terminal gland present, dehiscing through 2 longitudinal slits; pollen small, ~20 µm, parasyncolpate, oblate, triangular in polar view. Style inserted in a shallow pit on summit of ovary, filiform, 5–6 mm long, scattered hairs near junction with ovary, oil glands sparse, stylar canal open, stigma punctiform; ovary 2 mm long, ~1.5 mm wide, summit truncate, pubescent, oil glands sparse, 2-locular, 1 or 2 ovules per locule, placentation basal. Nectaries 4, club-shaped, 1 mm long, attached at the base of the ovary and hidden in a pocket in the perigynium corresponding to the angles. Fruit dry, indehiscent, enclosed by the inflated perigynium, white with pink blush drying brown; wings on perigynium prominent at maturity. Disseminule 6 × 5 mm. Seeds up to 0.8 mm long, rarely observed, embryo curved with more or

less conduplicate cotyledons; many did not complete development or were parasitised (Fig. 5).

*Leaf anatomy*

Lamina dorsiventral, 0.2 mm thick, palisade mesophyll two rows thick, occupying 40% of transverse section; a third row occasionally present, the remainder consisting of spongy mesophyll cells. Midrib vascular bundle bicollateral, vascular tissue surrounded by fibres. Stomata present on abaxial surface only, paracytic, on average 17 per 0.04 mm<sup>2</sup>, with some giant stomata present. Oil-gland density similar on both sides, 11–12 mm<sup>-2</sup>; glands are capped by modified stomatal apparatus. Occasional calcium oxalate druse present near veins.

*Wood anatomy*

The wood anatomy is generally consistent with the description for *Backhousia* spp. by Wilson *et al.* (2000) and Ingle and Dadswell (1953). Bark thin, 1.5–2 mm thick, measured on a wood block of 10.5–11.5-cm diameter. Heartwood colour variable, chiefly pale brown in colour, sapwood paler, wood density varies from 790 kg m<sup>-2</sup> to 910 kg m<sup>-2</sup> (J. Elliott, pers. comm.) The denser sample was from a branch that had been on the ground for years (Blocks at CNS). Growth rings are reasonably easy to discern except near the centre; a transverse section of a branch of 10.5–11.5-cm diameter had 180–212 rings. Wood weakly ring porous, fibres clustered to the outside of each ring, thick-walled with small oblique pits, 500–740 µm long. Vessels are chiefly solitary or in radial multiples of 2–3; size and distribution varies from 280 to 450 µm long, diameter 30–40 µm; perforation plate simple, pits rounded; no tyloses observed. Parenchyma mostly apotracheal, pits small, bordered similar to vessel pitting. Tracheids present incompletely vasicentric, length varies from 300 to 520 µm, diameter ~20 µm. Rays uniseriate, weakly heterogeneous, marginal cells may be elongated.

*Oil*

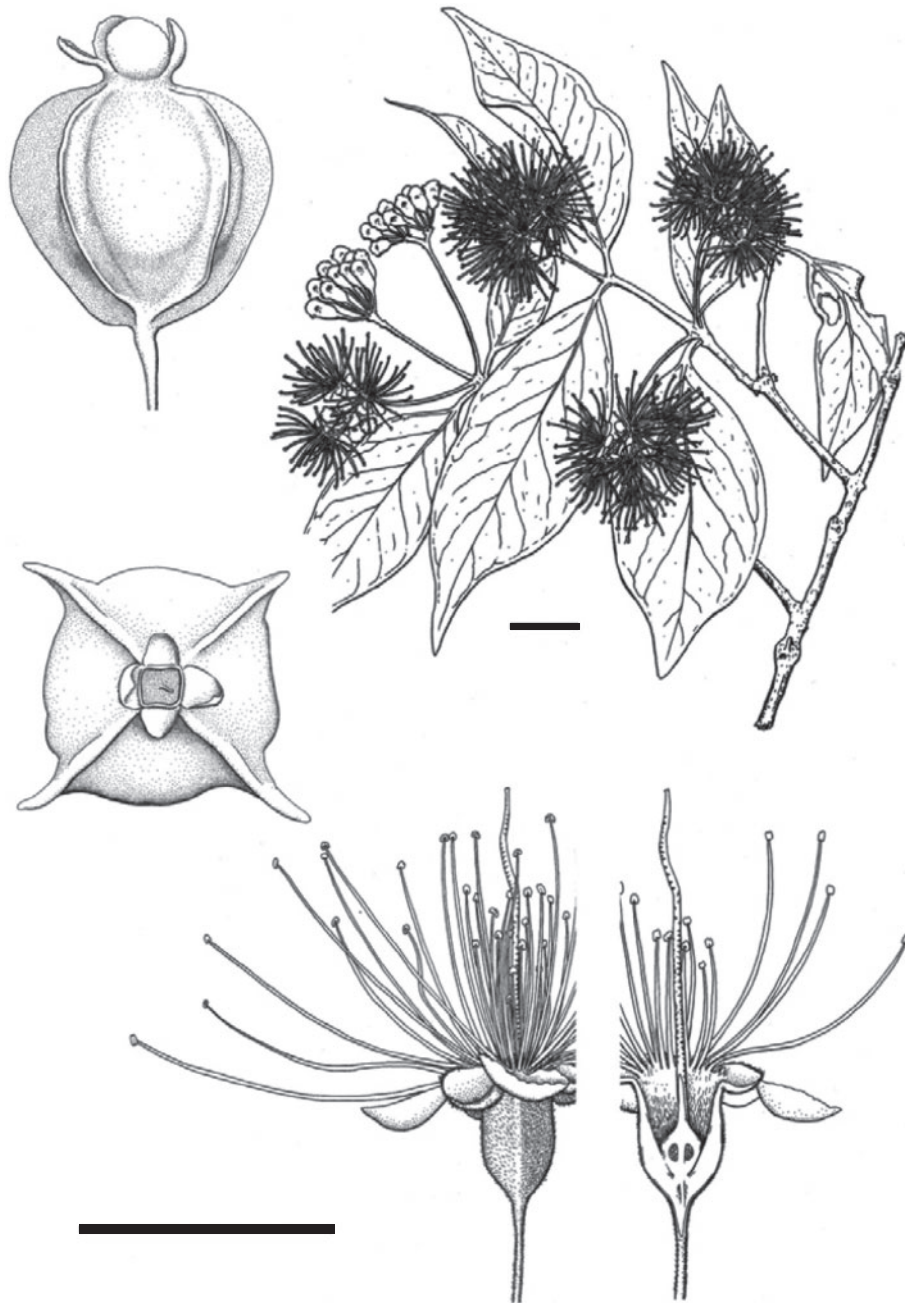
In Brophy *et al.* (1995), the oils of nine species of *Backhousia* are described. Subsequently, Brophy *et al.* (2007) investigated the oils of *B. enata* A.J.Ford, Craven & J.Holmes. An initial analysis of the leaf oils of *B. tetraptera* by nuclear magnetic resonance spectroscopy indicated that the predominant oil was myrtenyl acetate (B. Bowden, pers. comm.). A gas chromatographic analysis by J. Brophy confirmed this result (J. Brophy, unpubl. data 2011); he also found traces of several other unusual compounds. Myrtenyl was detected in both *B. oligandra* (described as *B. sp.* Didcot P.I.Forster PIF12617) (Brophy *et al.* 1995) and *B. enata* (Brophy *et al.* 2007).

*Additional material examined*

Queensland. North Kennedy: Mount Stuart, Townsville, *J.W. Elliott JE3*, 5 July 2010; *J.W. Elliott JE10 & K. Townsend*, 21 October 2010 (CNS, JCT); *J.W. Elliott JE12 & K. Townsend*, 16 January 2012 (CNS, BRI, CANB, NSW, K, MO); *J.W. Elliott JE14 & K. Townsend*, 6 February 2012 (JCT).

*Distribution and habitat*

*Backhousia tetraptera* is known from only one population located in a gully on Mount Stuart (19°20'S, 146°47'E), at an altitude of



**Fig. 5.** *Backhousia tetraptera*, *sp. nov.*, flowers from J.Elliott 11 (CNS), fruit from type specimen. Scale bars = 5 mm (both). Del. Ashley Field (CNS).

500 m. In this population ~170–180 individual trees were recorded. This grove occurs in a deep gully protected by ridges to the east and west. The granitic substrate is moist most of the year, particularly if in the shade; during the dry period of the year it is fed by seepage. Trees extend along this gully for ~350 m. The area is frequently covered in cloud at night, particularly in the summer months. No specimens were growing more than 2 m above the bottom of the gully, juveniles were

scattered throughout (observations by J. W. Elliott, K. Townsend and P. Thomas – Society for Growing Australian Plants). Although there is evidence of the population having been affected by fire in the past, most plants appear to be protected by the rocky substrate and topography. Although juveniles are present, expansion of the population is unlikely because of an apparently unreliable moisture supply away from the base of the gully, combined with likely susceptibility to fire. There is

evidence of branch recovery after fire and recent fires have affected leaves on outer branches but not the main trunk or trunks (if coppiced).

#### Phenology

In 2010 and 2012, mass flowering occurred ~4 weeks after a substantial rainfall event (>200 mm), preceded by an extended dry period of 7 months with rainfall less than 25 mm per month. In 2010, three dry months were followed by 3 months of moderate rainfall (mean 60 mm per month), followed by 4 months with rainfall greater than 200 mm per month. In October 2010, flowers were observed and collected from one small branch. Despite regular observations by John Elliott and Keith Townsend, flowering was not observed until January 2012. Fruits were collected in February 2012, 3 weeks after flowering. In May 2010, old fruits were present on some branches, although most were among rocks; it is assumed that these resulted from a flowering in January 2010.

#### Etymology

Named for the disseminule, which has four wings and is the distinctive characteristic of this species.

#### Conservation status

Rare – known only from only one population. All the trees are within the boundaries of the Townsville City Council Scenic Reserve and the Mount Stuart Army Training area and adjacent to an escarpment. A status of endangered is recommended, dependent on species response to myrtle rust.

#### Notes

In previous surveys of the Mount Stuart area near Townsville, *B. tetraptera* has almost certainly been misidentified as *Gossia bidwillii*. (Benth.) N.Snow & Guymer. In May 2010, John Elliott noticed the unusual disseminules lodged among the rocks. Despite regular visits to the area between May 2010 and October 2011, no other disseminules were found. Flowers were collected from one branch of a small tree in October 2010; no disseminules were subsequently observed.

The distinguishing features of this species are associated with the 'perigynium'. This term was preferred by Briggs and Johnson (1979) to hypanthium. They defined it as a 'cup or tube around the ovary (whether phylogenetically derived from receptacular tissue or from 'fusion' of the outer floral whorls) bearing the outer floral organs at or near its distal edge and sometimes extending upwards and outwards beyond the ovary'. This term has been chosen here because, in this species, the structure arises below the ovary and is not fused to the ovary, in fruit it encloses the ovary and is inflated with four obvious wings. A club-shaped nectary is almost completely hidden in each angle of the perigynium. The vascular trace to the nectary departs from the central cylinder before traces departing to the carpel bundles and the placentae. This nectariferous tissue appears to be non-functional. Fresh flowers stained with aqueous neutral red failed to show any activity, and no fragrance was noted after flowers were sealed in vials for 3 h.

The flowers appear to be protandrous with the style longer in older flowers than at anthesis. Few abnormal pollen grains were observed when viewed at 400× magnification. Nearly all fruits examined were parasitised.

#### *Backhousia leptopetala* (F.Muell.) M.G.Harr., *comb. nov.*

*Basionym:* *Syncarpia leptopetala* F.Muell., *Fragmenta Phytographiae Australiae* 1(4): 79 (1859). *Metrosideros leptopetala* (F.Muell.) F.Muell., *Systematic Census of Australian Plants* 59 (1882). *Nania leptopetala* (F.Muell.) Kuntze, *Revisio Generum Plantarum* 1: 242 (1891) (as '*leptoclada*'). *Choricarpia leptopetala* (F.Muell.) Domin, *Bibliotheca Botanica* Heft 89(4): 472, tafel 32, fig. 10–13 (1928).

*Type:* Queensland: in bush, Brisbane River, *W. Hill* (holo: MEL, *n.v.*).

#### *Backhousia subargentea* (C.T.White) M.G.Harr., *comb. nov.*

*Basionym:* *Syncarpia subargentea* C.T.White, *Botany Bulletin. Department of Agriculture and Stock, Queensland* 21: 8, t. 3 (1919). *Choricarpia subargentea* (C.T.White) L.A.S.Johnson, *Contributions from the New South Wales National Herbarium* 3(3): 100 (1961).

*Type:* Queensland: Imbil, *F.H. Weatherhead* (holo: BRI, *n.v.*)

*Syncarpia subargentea* var. *latifolia* C.T.White, *Botany Bulletin. Department of Agriculture and Stock, Queensland* 21: 8 (1919).  
*Type:* Imbil, *F.H. Weatherhead* (holo: BRI, *n.v.*).

#### Acknowledgements

For sampling assistance for the molecular dataset we acknowledge Dr Peter Wilson, Gary Sankowsky and Andrew Ford and, for laboratory support, Alessia Mortari. This work was, in part, funded by James Cook University (JCU) and CSIRO research funding to M. G. Harrington. This support is gratefully acknowledged. For assistance with *B. gundarara*, we thank the Botanic Gardens and Parks Authority, Dunkeld Pastoral, Paul Doughty and the Western Australian Museum, and William (Butch) Maher for providing helicopter time and field assistance that enabled M. D. Barrett and R. L. Barrett to collect the type specimen of *B. gundarara*. Thanks go to Garry and Nada Sankowsky, Wayne O'Sullivan and Dave Dureau for bringing *B. gundarara* to light and assisting to relocate fertile plants. The illustration of *B. gundarara* was produced by Nadine Guthrie (PERTH). Without the efforts of John Elliott, *B. tetraptera* would have remained unnoticed. Sincere thanks go to John Elliott and Keith Townsend who, in association with other members of the Townsville Branch of the Society for Growing Australian Plants, have visited the grove every few weeks. Sue Reilly (JCU histologist) prepared the sections of the flowers and wood for analysis. Bruce Bowden (JCU) made a preliminary analysis of the oil content of the leaves and Joe Brophy (UNSW) then confirmed these results by using a different technique. The Australian Defence Force has given the 'team' permission to regularly traverse their land. The illustration of *B. tetraptera* was produced by Ashley Field (CNS).

#### References

- Bamber RK (1962) The anatomy of the barks of Leptospermoideae. *Australian Journal of Botany* **10**, 25–54. doi:10.1071/BT9620025
- Barlow BA, Hyland BP (1988) The origins of the flora of Australia's wet tropics. *Proceedings of the Ecological Society of Australia* **15**, 1–17.
- Barracough TG, Vogler AP (2002) Recent diversification rates in North America tiger beetles estimated from a dated mtDNA phylogenetic tree. *Molecular Biology and Evolution* **19**, 1706–1716. doi:10.1093/oxfordjournals.molbev.a003993

- Biffin E, Lucas EJ, Craven LA, Ribeiro da Costa I, Harrington MG, Crisp MD (2010) Evolution of exceptional species richness amongst lineages of fleshy fruited Myrtaceae. *Annals of Botany* **106**, 79–93. doi:10.1093/aob/mcq088
- Briggs BG, Johnson LAS (1979) Evolution in the Myrtaceae: evidence from inflorescence structure. *Proceedings of the Linnean Society of New South Wales* **102**, 157–256.
- Brophy JJ, Goldsack RJ, Forster PI (1994) The essential oils of *Choricarpia leptopetala* (F.Muell.) Domin and *C. subargentea* (C.T.White) L.A.S. Johnson (Myrtaceae). *Flavour and Fragrance Journal* **9**, 7–10. doi:10.1002/fj.2730090103
- Brophy JJ, Goldsack RJ, Fookes CJ, Forster PI (1995) Leaf oils of the genus *Backhousia* (Myrtaceae). *Journal of Essential Oil Research* **7**, 237–254. doi:10.1080/10412905.1995.9698514
- Brophy JJ, Goldsack RJ, Craven LA, Ford AJ (2007) Leaf oil of *Backhousia enata* (Myrtaceae). *Journal of Essential Oil Research* **19**, 26–27. doi:10.1080/10412905.2007.9699221
- Brown JM, Lemmon AR (2007) The importance of data partitioning and the utility of Bayes factors in Bayesian phylogenetics. *Systematic Biology* **56**, 643–655. doi:10.1080/10635150701546249
- Carnegie A, Lidbetter JR (2012) Rapidly expanding host range for *Puccinia psidii sensu lato* in Australia. *Australasian Plant Pathology* **41**, 13–29. doi:10.1007/s13313-011-0082-6
- Crisp MD, Cook LG, Steane DA (2004) Radiation of the Australian flora: what can comparisons of molecular phylogenies across multiple taxa tell us about the evolution of diversity in present-day communities? *Philosophical Transactions of the Royal Society B – Biological Sciences* **359**, 1551–1571. doi:10.1098/rstb.2004.1528
- Drummond AJ, Rambaut A (2007) BEAST: Bayesian evolutionary analysis by sampling trees. *BMC Evolutionary Biology* **7**, 214. doi:10.1186/1471-2148-7-214
- Floyd AG (1989) 'Rainforest trees of Mainland South-eastern Australia.' (Inkata Press: Melbourne)
- Ford AJ, Craven LA, Brophy JJ (2005) *Backhousia enata* A.J.Ford, Craven & J.Holmes (Myrtaceae), a new species from north-eastern Queensland. *Austrobaileya* **7**, 121–127.
- Gadek PA, Martin HA (1981) Pollen morphology in the subtribe Metrosiderinae of the Leptospermoideae (Myrtaceae) and its taxonomic significance. *Australian Journal of Botany* **29**, 159–184. doi:10.1071/BT9810159
- Greenwood DR, Herold N, Huber M, Müller RD, Seton M (2012) Early to middle Miocene monsoon climate in Australia. *Geology* **40**, e274. doi:10.1130/G33384Y.1
- Guymer GP (1988) A new species of *Backhousia* Hook. & Harvey (Myrtaceae) from Queensland and a reappraisal of *Backhousia floribunda* A.J.Scott. *Austrobaileya* **2**, 567–569.
- Herold N, Huber M, Greenwood DR, Müller RD, Seton M (2011) Early to middle Miocene monsoon climate in Australia. *Geology* **39**, 3–6. doi:10.1130/G31208.1
- Ingle HD, Dadswell HE (1953) The anatomy of the timbers of the south-west Pacific area. III. Myrtaceae. *Australian Journal of Botany* **1**, 353–401. doi:10.1071/BT9530353
- Jacks BR (2005) Revision of *Myrsine* (Myrsinaceae) in Australia. *Australian Systematic Botany* **18**, 399–438. doi:10.1071/SB04022
- Kass RE, Rafferty AE (1995) Bayes factors. *Journal of the American Statistical Association* **90**, 773–795. doi:10.1080/01621459.1995.10476572
- Katoh K, Toh H (2008) Recent developments in the MAFFT multiple sequence alignment program. *Briefings in Bioinformatics* **9**, 286–298. doi:10.1093/bib/bbn013
- Kenneally KF, Keighery GJ, Hyland BM (1991) Floristics and phytogeography of Kimberley rainforests, Western Australia. In 'Kimberley Rainforests Australia. (Eds NL McKenzie, RB Johnston, PG Kendrick) pp. 93–131. (Surrey Beatty: Sydney)
- Kershaw AP, Martin HA, McEwen Mason JR (1994) The Neogene: a period of transition. In 'History of the Australian Vegetation: Cretaceous to Recent'. (Ed. RS Hill) pp. 299–327. (Cambridge University Press: Cambridge, UK)
- Kress WJ, Wurdack KJ, Zimmer EA, Weigt LA, Janzen DH (2005) Use of DNA barcodes to identify flowering plants. *Proceedings of the National Academy of Sciences, USA* **102**, 8369–8374. doi:10.1073/pnas.0503123102
- Ladiges PY, Udovicic F, Nelson G (2003) Australian biogeographical connections and the phylogeny of large genera in the plant family Myrtaceae. *Journal of Biogeography* **30**, 989–998. doi:10.1046/j.1365-2699.2003.00881.x
- Liddle DT, Russell-Smith J, Brock J, Leach GJ, Connors GT (1994) 'Atlas of the Vascular Rainforest Plants of the Northern Territory.' (Australian Biological Resources Study: Canberra)
- Martin HA (2006) Cenozoic climate change and development of the arid vegetation in Australia. *Journal of Arid Environments* **66**, 533–563. doi:10.1016/j.jaridenv.2006.01.009
- Miller MA, Pfeiffer W, Schwartz T (2010) Creating the CIPRES Science Gateway for inference of large phylogenetic trees. In 'Proceedings of the Gateway Computing Environments Workshop (GCE)'. 14 November 2010, New Orleans, LA. pp. 1–8. (Cyberinfrastructure for Phylogenetic Research) Available at [http://www.phylo.org/sub\\_sections/portal/sc2010\\_paper.pdf](http://www.phylo.org/sub_sections/portal/sc2010_paper.pdf) [Verified 8 November 2012]
- Mueller FJH (1859) 'Fragmenta Phytographiae Australiae.' 1(4). (Melbourne Printers: Melbourne)
- Pybus OG, Harvey PH (2000) Testing macro-evolutionary models using incomplete molecular phylogenies. *Proceedings of the Royal Society of London B – Biological Sciences* **267**, 2267–2272. doi:10.1098/rspb.2000.1278
- Rambaut A, Drummond AJ (2007) 'Tracer v1.5.' Available at <http://beast.bio.ed.ac.uk/Tracer> [Verified 8 November 2012]
- Ronquist F, Huelsenbeck JP (2003) MRBAYES 3: Bayesian phylogenetic inference under mixed models. *Bioinformatics* **19**, 1572–1574. doi:10.1093/bioinformatics/btg180
- Savolainen V, Anstett M-C, Lexer C, Hutton I, Clarkson JJ, Norup MV, Powell MP, Springate D, Salamin N, Baker WJ (2006) Sympatric speciation in palms on an oceanic island. *Nature* **441**, 210–213. doi:10.1038/nature04566
- Shaw J, Small RL (2004) Addressing the 'hardest puzzle in American pomology'. Phylogeny of *Prunus* sect. *Prunocerasus* (Rosaceae) based on seven noncoding chloroplast DNA regions. *American Journal of Botany* **91**, 985–996. doi:10.3732/ajb.91.6.985
- Sniderman JR, Jordan GJ (2011) Extent and timing of floristic exchange between Australian and Asian rain forests. *Journal of Biogeography* **38**, 1445–1455. doi:10.1111/j.1365-2699.2011.02519.x
- Stamatakis A, Ludwig T, Meier H (2005) RAxML-III: a fast program for maximum likelihood-based inference of large phylogenetic trees. *Bioinformatics* **21**, 456–463. [Published online early 17 December 2004] doi:10.1093/bioinformatics/bti191
- Sun Y, Skinner DZ, Liang GH, Hulbert SH (1994) Phylogenetic analysis of Sorghum and related taxa using internal transcribed spacers of nuclear ribosomal DNA. *Theoretical and Applied Genetics* **89**, 26–32. doi:10.1007/BF00226978
- Swofford DL (2002) 'PAUP\*. Phylogenetic Analysis Using Parsimony (\*and Other Methods). Sinauer Associates, Sunderland, MA)
- Thornhill AH, Popple LW, Carter RJ, Ho SY, Crisp MD (2012a) Are pollen fossils useful for calibrating relaxed molecular clock dating of phylogenies? A comparative study using Myrtaceae. *Molecular Phylogenetics and Evolution* **63**, 15–27. doi:10.1016/j.ympev.2011.12.003
- Thornhill AH, Hope GS, Craven LA, Crisp MD (2012b) Pollen morphology of the Myrtaceae. Part 2: tribes Backhouseae, Melaleuceae, Metrosiderea, Osbornieae and Syzygieae. *Australian Journal of Botany* **60**, 200–224. doi:10.1071/BT11175

- Travouillon KJ, Legendre S, Archer M, Hand SJ (2009) Palaeoecological analyses of Riversleigh's Oligo–Miocene sites: implications for Oligo–Miocene climate change in Australia. *Palaeogeography, Palaeoclimatology, Palaeoecology* **276**, 24–37. doi:10.1016/j.palaeo.2009.02.025
- Travouillon KJ, Archer M, Hand SJ (2012) Early to middle Miocene monsoon climate in Australia. *Geology* **40**, e273. doi:10.1130/G32600C.1
- White CT (1919) Contributions to the Queensland flora. Department of Agriculture and Stock, Queensland, Botany Bulletin 21. (Brisbane)
- White TJ, Bruns T, Lee S, Taylor J (1990) Amplification and direct sequencing of fungal ribosomal RNA genes for phylogenetics. In 'PCR Protocols: a Guide to Methods and Applications'. (Eds MD Innis, D Gelfand, J Sninsky, T White) pp. 315–322. (Academic Press: San Diego, CA)
- Wilson PG (2011) Myrtaceae. In 'The families and genera of vascular plants. X. Flowering Plants. Eudicots: Sapindales, Cucurbitales, Myrtaceae'. (Ed. K Kubitzki) pp. 212–271. (Springer-Verlag: Berlin)
- Wilson PG, O'Brien MM, Quinn CJ (2000) *Anetholea* (Myrtaceae) a new genus for *Backhousia anisata*: a cryptic member of the *Acmena* alliance. *Australian Systematic Botany* **13**, 429–435. doi:10.1071/SB99008
- Wilson PG, O'Brien MM, Heslewood MM, Quinn CJ (2005) Relationships within Myrtaceae *sensu lato* based on a *matK* phylogeny. *Plant Systematics and Evolution* **251**, 3–19. doi:10.1007/s00606-004-0162-y
- Zhou LL, Su YCF, Thomas DC, Saunders RM (2012) 'Out-of-Africa' dispersal of tropical floras during the Miocene climatic optimum: evidence from *Uvaria* (Annonaceae). *Journal of Biogeography* **39**, 322–335. doi:10.1111/j.1365-2699.2011.02598.x

## Appendix 1. Vouchers and GenBank accession numbers for taxa used in phylogenetic analyses

Species	Voucher (for new accessions)	<i>matK</i>	<i>rps16</i>	<i>trnH-psbA</i>	<i>trnC-psbM</i>	<i>trnL-F</i>	ITS
Backhouseieae							
<i>Backhousia angustifolia</i> F.Muell.	B Hyland 25921 RFK (CNS)			KC134149	KC134183	KC134170	KC134136
<i>Backhousia bancroftii</i> F.M.Bailey	Costion 1800 (CNS)	KC134162	KC134127	KC134150	KC134184	KC134171	KC134137
<i>Backhousia citriodora</i> F.Muell.	RBG 14090	AY525129	KC134128	KC134151	KC134185	KC134172.	KC134138
<i>Backhousia enata</i> A.J.Ford	Craven & J. Holmes, A Ford 3780 (CNS)	KC134163		KC134152	KC134186	KC134173	KC134139
<i>Backhousia hughesii</i> C.T.White	A Ford 3977 (CNS)	KC134164	KC134129	KC134153	KC134187	KC134174	KC134140
<i>Backhousia kingii</i> Guymer	PI Forster 14489 (CNS)			KC134155	KC134189	KC134176	KC134142
<i>Backhousia myrtifolia</i> Hook. & Harv.	RBG 14095 <sup>A</sup>	AF368200	KC134131	KC134156	KC134190	KC134177	KC134143
<i>Backhousia oligantha</i> A.R.Bean	PI Forster 7525 (CNS)			KC134157	KC134191	KC134178	KC134144
<i>Backhousia sciadophora</i> F.Muell.	PI Forster 6203 (CNS)	KC134166	KC134132	KC134158	KC134192	KC134179	KC134145
<i>Backhousia</i> sp. Prince Regent (W.O'Sullivan & D.Dureau WODD 42) WA Herbarium	G Sankowski 2255 (PERTH)	KC134165	KC134130	KC134154	KC134188	KC134175	KC134141
<i>Backhousia</i> sp. Mount Stuart	J.Elliott1	KC134169	KC134135	KC134161	KC134195	KC134182	KC134148
<i>Choricarpia leptopetala</i> (F.Muell.) Domin	RBG 14168 <sup>A</sup>	KC134167	KC134133	KC134159	KC134193	KC134180	KC134147
<i>Choricarpia subargentea</i> (C.T.White) L.A.S.Johnson	BJ Wallace 83024 (RBG)	KC134168	KC134134	KC134160	KC134194	KC134181	KC134146
Kanieae							
<i>Sphaerantia chartacea</i> Peter G.Wilson & B.Hyland	AY521547				HM160115-6		HM160115-6
<i>Tristaniopsis laurina</i> (Sm.) Peter G.Wilson & J.T.Waterh.	AF184710				EF041514		EF041514
Metrosidereae							
<i>Metrosideros diffusa</i> (G.Forst.) Sm.	AY521542		AM489848			AF211500	AF211500
<i>Metrosideros nervulosa</i> C.Moore & F.Muell.	DQ088535	JF950871	AM489848		JF950926	JF950781	JF950783
Syzygieae							
<i>Syzygium anisatum</i> (Vickery) Craven & Biffin	AF368195		AM489812			DQ088407	AY187225
<i>Syzygium cumini</i> (L.) Skeels	GQ870669	GQ870669	GQ870669	GQ870669	GQ870669	JF682812	JF682812
<i>Syzygium jambos</i> (L.) Alston	DQ088583		HQ415491			JF682816	JF682816
<i>Syzygium maire</i> (A.Cunn.) Sykes & P.J.Garnock-Jones	DQ088589			AM489883		EF026632	EF026632
<i>Syzygium smithii</i> (Poir.) Nied.	AY525127					AY187168	AY187168
<i>Syzygium unipunctatum</i> (B.Hyland) Craven & Biffin	DQ088623					AY187224	AY187224
Tristanieae							
<i>Thaleroxia queenslandica</i> (L.S.Sm.) Peter G.Wilson	AF368223					AY264945	AY264945
<i>Xanthomyrtus</i>	AF368226		AM489887			AM234148	AM234148

<sup>A</sup>RBG indicate living collection numbers.