

## VU Research Portal

### Validation of the CrIS fast physical NH 3 retrieval with ground-based FTIR

Dammers, E.; Erisman, J.W.

**published in**

Atmospheric Measurement  
2017

**DOI (link to publisher)**

[10.5194/amt-10-2645-2017](https://doi.org/10.5194/amt-10-2645-2017)

**document version**

Publisher's PDF, also known as Version of record

[Link to publication in VU Research Portal](#)

**citation for published version (APA)**

Dammers, E., & Erisman, J. W. (2017). Validation of the CrIS fast physical NH 3 retrieval with ground-based FTIR. *Atmospheric Measurement*, 10(7), 2645-2667. <https://doi.org/10.5194/amt-10-2645-2017>

**General rights**

Copyright and moral rights for the publications made accessible in the public portal are retained by the authors and/or other copyright owners and it is a condition of accessing publications that users recognise and abide by the legal requirements associated with these rights.

- Users may download and print one copy of any publication from the public portal for the purpose of private study or research.
- You may not further distribute the material or use it for any profit-making activity or commercial gain
- You may freely distribute the URL identifying the publication in the public portal ?

**Take down policy**

If you believe that this document breaches copyright please contact us providing details, and we will remove access to the work immediately and investigate your claim.

**E-mail address:**

[vuresearchportal.ub@vu.nl](mailto:vuresearchportal.ub@vu.nl)



## Validation of the CrIS fast physical NH<sub>3</sub> retrieval with ground-based FTIR

Enrico Dammers<sup>1</sup>, Mark W. Shephard<sup>2</sup>, Mathias Palm<sup>3</sup>, Karen Cady-Pereira<sup>4</sup>, Shannon Capps<sup>5,a</sup>, Erik Lutsch<sup>6</sup>, Kim Strong<sup>6</sup>, James W. Hannigan<sup>7</sup>, Ivan Ortega<sup>7</sup>, Geoffrey C. Toon<sup>8</sup>, Wolfgang Stremme<sup>9</sup>, Michel Grutter<sup>9</sup>, Nicholas Jones<sup>10</sup>, Dan Smale<sup>11</sup>, Jacob Siemons<sup>2</sup>, Kevin Hrpcek<sup>12</sup>, Denis Tremblay<sup>13</sup>, Martijn Schaap<sup>14</sup>, Justus Notholt<sup>3</sup>, and Jan Willem Erisman<sup>1,15</sup>

<sup>1</sup>Cluster Earth and Climate, Department of Earth Sciences, Vrije Universiteit Amsterdam, Amsterdam, the Netherlands

<sup>2</sup>Environment and Climate Change Canada, Toronto, Ontario, Canada

<sup>3</sup>Institut für Umwelphysik, University of Bremen, Bremen, Germany

<sup>4</sup>Atmospheric and Environmental Research (AER), Lexington, Massachusetts, USA

<sup>5</sup>Department of Mechanical Engineering, University of Colorado, Boulder, Colorado, USA

<sup>6</sup>Department of Physics, University of Toronto, Toronto, Ontario, Canada

<sup>7</sup>NCAR, Boulder, Colorado, USA

<sup>8</sup>Jet Propulsion Laboratory, California Institute of Technology, Pasadena, California, USA

<sup>9</sup>Centro de Ciencias de la Atmósfera, Universidad Nacional Autónoma de México, Mexico City, Mexico

<sup>10</sup>University of Wollongong, Wollongong, Australia

<sup>11</sup>National Institute of Water and Atmosphere, Lauder, New Zealand

<sup>12</sup>University of Wisconsin-Madison Space Science and Engineering Center (SSEC), Madison, Wisconsin, USA

<sup>13</sup>Science Data Processing, Inc., Laurel, MD, USA

<sup>14</sup>TNO Built Environment and Geosciences, Department of Air Quality and Climate, Utrecht, the Netherlands

<sup>15</sup>Louis Bolk Institute, Driebergen, the Netherlands

<sup>a</sup>now at: Civil, Architectural, and Environmental Engineering Department, Drexel University, Philadelphia, Pennsylvania, USA

*Correspondence to:* Enrico Dammers (enrico.dammers@gmail.com)

Received: 6 February 2017 – Discussion started: 21 March 2017

Revised: 21 June 2017 – Accepted: 27 June 2017 – Published: 25 July 2017

**Abstract.** Presented here is the validation of the CrIS (Cross-track Infrared Sounder) fast physical NH<sub>3</sub> retrieval (CFPR) column and profile measurements using ground-based Fourier transform infrared (FTIR) observations. We use the total columns and profiles from seven FTIR sites in the Network for the Detection of Atmospheric Composition Change (NDACC) to validate the satellite data products. The overall FTIR and CrIS total columns have a positive correlation of  $r = 0.77$  ( $N = 218$ ) with very little bias (a slope of 1.02). Binning the comparisons by total column amounts, for concentrations larger than  $1.0 \times 10^{16}$  molecules cm<sup>-2</sup>, i.e. ranging from moderate to polluted conditions, the relative difference is on average  $\sim 0\text{--}5\%$  with a standard deviation of 25–50%, which is comparable to the estimated

retrieval uncertainties in both CrIS and the FTIR. For the smallest total column range ( $< 1.0 \times 10^{16}$  molecules cm<sup>-2</sup>) where there are a large number of observations at or near the CrIS noise level (detection limit) the absolute differences between CrIS and the FTIR total columns show a slight positive column bias. The CrIS and FTIR profile comparison differences are mostly within the range of the single-level retrieved profile values from estimated retrieval uncertainties, showing average differences in the range of  $\sim 20$  to 40%. The CrIS retrievals typically show good vertical sensitivity down into the boundary layer which typically peaks at  $\sim 850$  hPa ( $\sim 1.5$  km). At this level the median absolute difference is 0.87 (std =  $\pm 0.08$ ) ppb, corresponding to a median relative difference of 39% (std =  $\pm 2\%$ ). Most of the absolute and

relative profile comparison differences are in the range of the estimated retrieval uncertainties. At the surface, where CrIS typically has lower sensitivity, it tends to overestimate in low-concentration conditions and underestimate in higher atmospheric concentration conditions.

## 1 Introduction

The disruption of the nitrogen cycle by the human creation of reactive nitrogen has created one of the major challenges for humankind (Rockström et al., 2009). Global reactive nitrogen emissions into the air have increased to unsurpassed levels (Fowler et al., 2013) and are currently estimated to be four times larger than pre-industrial levels (Holland et al., 1999). As a consequence the deposition of atmospheric reactive nitrogen has increased causing ecosystems and species loss (Rodhe et al., 2002; Dentener et al., 2006; Bobbink et al., 2010). Ammonia (NH<sub>3</sub>) as fertilizer is essential for agricultural production and is one of the most important reactive nitrogen species in the biosphere. NH<sub>3</sub> emission, atmospheric transport, and atmospheric deposition are major causes of eutrophication and acidification of soils and water in semi-natural environments (Erismann et al., 2008, 2011). Through reactions with sulfuric acid and nitric acid, ammonium nitrate and ammonium sulfate are formed, which embody up to 50 % of the mass of fine-mode particulate matter (PM<sub>2.5</sub>) (Seinfeld and Pandis., 1988; Schaap et al., 2004). PM<sub>2.5</sub> has been associated with various health impacts (Pope III et al., 2002, 2009). At the same time, atmospheric aerosols impact global climate directly through their radiative forcing effect and indirectly through the formation of clouds (Adams et al., 2001; Myhre et al., 2013). By fertilizing ecosystems, deposition of NH<sub>3</sub> and other reactive nitrogen compounds also plays a key role in the sequestration of carbon dioxide (Oren et al., 2001).

Despite the significance and impact of NH<sub>3</sub> on the environment and climate, its global distribution and budget are still relatively uncertain (Erismann et al., 2007; Clarisse et al., 2009; Sutton et al., 2013). One of the reasons is that in situ measuring of atmospheric NH<sub>3</sub> at ambient levels is complex due to the sticky nature and reactivity of the molecule, leading to large uncertainties and/or sampling artefacts with the currently used measuring techniques (von Bobruzki et al., 2010; Puchalski et al., 2011). Measurements are also very sparse. Currently, observations of NH<sub>3</sub> are mostly available in north-western Europe and central North America, supplemented by a small number of observations made in China (Van Damme et al., 2015b). Furthermore, there is a lack of detailed information on its vertical distribution as only a few dedicated airborne measurements are available (Nowak et al., 2007, 2010; Leen et al., 2013; Whitburn et al., 2015; Shephard et al., 2015). The atmospheric lifetime of NH<sub>3</sub> is rather short, ranging from hours to a few days. In summary, global

emission estimates have large uncertainties. Estimates of regional emissions attributed to source types that are different from the main regions are even more uncertain due to a lack of process knowledge and atmospheric levels (Reis et al., 2009).

Over the last decade the development of satellite observations of NH<sub>3</sub> from instruments such as the Cross-track Infrared Sounder (CrIS, Shephard and Cady-Pereira, 2015), the Infrared Atmospheric Sounding Interferometer (IASI, Clarisse et al., 2009; Coheur et al., 2009; Van Damme et al., 2014a), the Atmospheric Infrared Sounder (AIRS, Warner et al., 2016) and the Tropospheric Emission Spectrometer (TES, Beer et al., 2008; Shephard et al., 2011) have shown the potential to improve our understanding of NH<sub>3</sub> distribution. Recent studies show the global distribution of NH<sub>3</sub> measured at a twice daily scale (Van Damme et al., 2014a, 2015a) can reveal seasonal cycles and distributions for regions where measurements were unavailable until now. Comparisons of these observations to surface observations and model simulations show underestimations of the modelled NH<sub>3</sub> concentration levels, pointing to underestimated regional and national emissions (Clarisse et al., 2009; Shephard et al., 2011; Heald et al., 2012; Nowak et al., 2012; Zhu et al., 2013; Van Damme et al., 2014b; Lonsdale et al., 2017; Schiferl et al., 2014, 2016; Zondlo et al., 2016). However, the overall quality of the satellite observations is still highly uncertain due to a lack of validation. The few validation studies showed a limited vertical, spatial and or temporal coverage of surface observations for a proper uncertainty analysis (Van Damme et al., 2015b; Shephard et al., 2015; Sun et al., 2015). A recent study by Dammers et al. (2016a) explored the use of Fourier transform infrared (FTIR-NH<sub>3</sub>, Dammers et al., 2015) observations to evaluate the uncertainty of the IASI-NH<sub>3</sub> total column product. The study showed the good performance of the IASI-LUT (look-up table; Van Damme et al., 2014a) retrieval with a high correlation ( $r \sim 0.8$ ), but indicated an underestimation of around 30 % due to potential assumptions of the shape of the vertical profile (Whitburn et al., 2016; IASI-NN, neural network), uncertainty in spectral line parameters and assumptions on the distributions of interfering species. The study showed the potential of using FTIR observations to validate satellite observations of NH<sub>3</sub>, but also stressed the challenges of validating retrievals that do not provide the vertical measurement sensitivity, such as the IASI-LUT retrieval. Since no IASI satellite averaging kernels are provided for each retrieval, and thus no information is available on the vertical sensitivity and/or vertical distribution of each separate observation, it is hard to determine the cause of the discrepancies between the observations.

The new CrIS fast physical retrieval (Shephard and Cady-Pereira, 2015) uses an optimal estimation retrieval approach that provides the information content and the vertical sensitivity (derived from the averaging kernels; for more details see Shephard and Cady-Pereira, 2015), and robust and straightforward retrieval error estimates based on retrieval in-

put parameters. The quality of the retrieval has so far not been thoroughly examined in comparison to other observations. Shephard and Cady-Pereira (2015) used Observing System Simulation Experiment (OSSE) studies to evaluate the initial performance of the CrIS NH<sub>3</sub> retrieval, and report a small positive retrieval bias of 6% with a standard deviation of  $\pm 20\%$  (ranging from  $\pm 12\%$  to  $\pm 30\%$  over the vertical profile). Note that no potential systematic errors were included in these OSSE simulations. Their study also shows good qualitative comparisons with the Tropospheric Emission Spectrometer (TES) satellite (Shephard et al., 2011) and the ground-level in situ quantum cascade laser (QCL) observations (Miller et al., 2014) for a case study over the Central Valley in CA, USA, during the DISCOVER-AQ campaign. However, currently there has not been an extensive validation of the CrIS NH<sub>3</sub> retrievals using direct comparisons with vertical profile observations. In this study we will provide both direct comparisons of the CrIS-retrieved profiles and ground-based FTIR observations as well as comparisons of CrIS total column values and the FTIR and IASI.

## 2 Methods

### 2.1 The CrIS fast physical retrieval

CrIS was launched in late October 2011 on board the Suomi NPP platform. CrIS follows a sun-synchronous orbit with a daytime overpass time at 13:30 LT (local time) (ascending) and a night-time equator overpass at 01:30 LT. The instrument scans along a 2200 km swath using a  $3 \times 3$  array of circular-shaped pixels with a diameter of 14 km at nadir for each pixel, which become larger ovals away from nadir. In this study we use the NH<sub>3</sub> retrieval as described by Shephard and Cady-Pereira (2015). The retrieval is based on an optimal estimation approach (Rodgers, 2000) that minimizes the differences between CrIS spectral radiances and simulated forward model radiances computed from the Optimal Spectral Sampling method (OSS) OSS-CrIS (Moncet et al., 2008), which is built from the well-validated Line-By-Line Radiative Transfer Model (LBLRTM) (Clough et al., 2005; Shephard et al., 2009; Alvarado et al., 2013) and uses the HITRAN database (Rothman et al., 2013) for its spectral lines. The fast computational speed of OSS facilitates the operational production of CrIS-retrieved (level 2) products using an optimal estimation retrieval approach (Moncet et al., 2005). The CrIS OSS radiative transfer forward model computes the spectrum for the full CrIS LW band, at the CrIS spectral resolution of  $0.625 \text{ cm}^{-1}$  (Tobin, 2012); thus the complete NH<sub>3</sub> spectral band (near  $10 \mu\text{m}$ ) is available for the retrievals. However, only a small number of microwindows are selected for the CrIS retrievals to both maximize the information content and minimize the influence of errors. Worden et al. (2004) provides an example of a robust spectral region selection process that takes into consideration

both the estimated errors (i.e. instrument noise, spectroscopy errors, interfering species, etc.) and the associated information content in order to select the optimal spectral regions for the retrieval. The a priori profiles selection for the optimal estimation retrievals follows the TES retrieval algorithm (Shephard et al., 2011). Based on the relative NH<sub>3</sub> signal in the spectra the a priori is selected from one of three possible profiles representing unpolluted, moderate, and polluted conditions. The initial guess profiles are also selected from these three potential profiles.

An advantage of using an optimal estimation retrieval approach is that averaging kernels (sensitivity to the true state) and the estimated errors of the retrieved parameter are computed in a robust and straightforward manner (for more details see Shephard and Cady-Pereira, 2015). The total satellite retrieved parameter error is expressed as the sum of the smoothing error (due to unresolved fine structure in the profile), the measurement error (random instrument noise in the radiance spectrum propagated to the retrieval parameter), and systematic errors from uncertainties in the non-retrieved forward model parameters and cross-state errors propagated from retrieval to retrieval (i.e. major interfering species such as H<sub>2</sub>O, CO<sub>2</sub>, and O<sub>3</sub>) (Worden et al., 2004). As of yet we have not included error estimates for the systematic errors. The CrIS smoothing error is computed, but since in these FTIR comparison results we apply the FTIR observational operator (which accounts for the smoothing error), the smoothing error contribution is not included in the CrIS errors reported in the comparisons. Thus, only the measurement errors are reported for observations used here; these errors can thus be considered the lower limit of the total estimated CrIS retrieval error.

Figure 1 shows an example of CrIS NH<sub>3</sub> observations surrounding one of the ground-based FTIR instruments. This is a composite map of all days in Bremen with observations in 2015. This figure shows the widespread elevated amounts of NH<sub>3</sub> across north-western Germany as observed by CrIS.

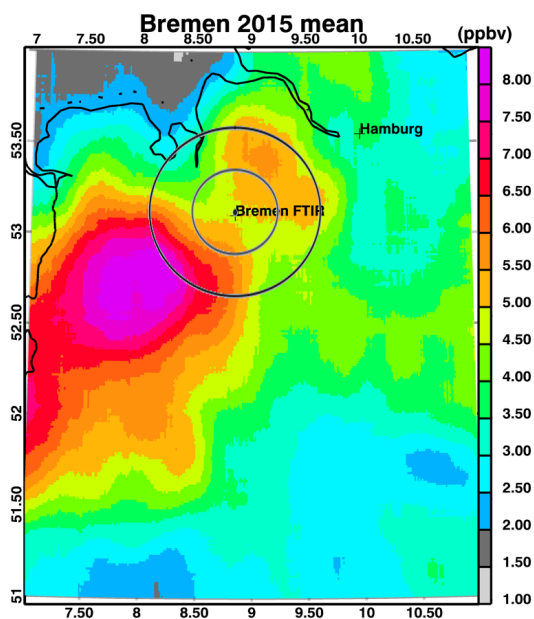
Since the goal of this analysis is to evaluate the CrIS retrievals that provide information beyond the a priori, we only performed comparisons when the CrIS spectrum presents a NH<sub>3</sub> signal. We also focused our efforts on FTIR stations that have FTIR observations with total columns larger than  $5 \times 10^{15} \text{ molecules cm}^{-2}$  ( $\sim 1\text{--}2 \text{ ppb}$  surface VMR (volume mixing ratio)). This restriction does mean that a number of sites of the FTIR-NH<sub>3</sub> data set will not be used. For comparability of this study to the results of the IASI-LUT evaluation in an earlier study by Dammers et al. (2016a) we include a short paragraph on the performance of the IASI-LUT and the more recent IASI-NN product when applying similar constraints.

### 2.2 FTIR-NH<sub>3</sub> retrieval

The FTIR-NH<sub>3</sub> product used in this study is similar to the set described in Dammers et al. (2016a) and is based

**Table 1.** The location, longitudinal and latitudinal position, altitude above sea level, and type of instrument for each of the FTIR sites used in this study. In addition, a reference is given to a detailed site description, when available.

Station	Lon (degrees)	Lat (degrees)	Altitude (m a.s.l.)	FTIR instrument	Reference
Bremen, Germany	8.85° E	53.10° N	27	Bruker 125 HR	Velazco et al. (2007)
Toronto, Canada	79.60° W	43.66° N	174	ABB Bomem DA8	Wiacek et al. (2007) Lutsch et al. (2016)
Boulder, USA	105.26° W	39.99° N	1634	Bruker 120 HR	
Pasadena, USA	118.17° W	34.20° N	350	MkIV_JPL	
Mexico City, Mexico	99.18° W	19.33° N	2260	Bruker Vertex 80	Bezanilla et al. (2014)
Wollongong, Australia	150.88° E	34.41° S	30	Bruker 125 HR	
Lauder, New Zealand	169.68° E	45.04° S	370	Bruker 120 HR	Morgenstern et al. (2012)



**Figure 1.** Annual mean of the CrIS-retrieved NH<sub>3</sub> surface VMR values around the Bremen FTIR site for 2015. The two circles show the collocation area when for radii of 25 and 50 km.

on the retrieval methodology described by Dammers et al. (2015). The retrieval methodology uses two spectral microwindows with spectral width that depends on the NH<sub>3</sub> background concentration determined for the observation stations and location (wider window for stations with background concentrations less than one ppb). NH<sub>3</sub> is retrieved by fitting the spectral lines in the two microwindows MW1 [930.32–931.32 cm<sup>-1</sup> or wide: 929.40–931.40 cm<sup>-1</sup>] and MW2 [962.70–970.00 cm<sup>-1</sup> or wide: 962.10–970.00 cm<sup>-1</sup>]. An optimal estimation approach (Rodgers, 2000) is used, implemented in the SFIT4 algorithm (Pougatchev et al., 1995; Hase et al., 2004, 2006). There are a number of species that can interfere to some extent in both windows, with the major species being H<sub>2</sub>O, CO<sub>2</sub> and O<sub>3</sub> and the minor species N<sub>2</sub>O, HNO<sub>3</sub>, CFC-12, and SF<sub>6</sub>. The HITRAN 2012 database

(Rothman et al., 2013) is used for the spectral lines. A further set of spectroscopic line parameter adjustments are added for CO<sub>2</sub> taken from the ATMOS database (Brown et al., 1996) as well as a set of pseudo-lines for the broad absorptions by the CFC-12 and SF<sub>6</sub> molecules (created by NASA-JPL, G.C. Toon, <http://mark4sun.jpl.nasa.gov/pseudo.html>). The NH<sub>3</sub> a priori profiles are based on balloon measurements (Toon et al., 1999) and refitted to match the local surface concentrations (depending on the station either measured or estimated by model results). For the interfering species a priori profiles we use the Whole Atmosphere Community Climate Model (WACCM, Chang et al., 2008, v3548). The estimated errors in the FTIR-NH<sub>3</sub> retrievals are of the order of ~30% (Dammers et al., 2015) with the uncertainties in the NH<sub>3</sub> line spectroscopy being the most important contributor. Based on the data requirements in Sect. 2.1, a set of seven stations is used (Table 1). For all sites except Wollongong in Australia we use the basic narrow spectral windows. For Wollongong the wide spectral windows are used. For a more detailed description of each of the stations see the publications listed in Table 1 or Dammers et al. (2016a).

### 2.3 IASI-NH<sub>3</sub>

The CrIS retrieval will also be compared with corresponding IASI/FTIR retrievals using results from a previous study by Dammers et al. (2016a). Both the IASI-LUT (Van Damme et al., 2014a) and the IASI-NN (Whitburn et al., 2016) retrievals from observations by the IASI instrument aboard MetOp-A will be used. A short description of both IASI retrievals is provided here; for a more in-depth description see the respective publications by Van Damme et al. (2014a) and Whitburn et al. (2016). The IASI instrument on board the MetOp-A platform is in a sun-synchronous orbit and has a daytime overpass at around 09:30 LST (local solar time) and a night-time overpass at around 21:30 LST. The instrument has a circular footprint of about 12 km diameter for nadir-viewing angles with of nadir observations along a swath of 2100 km. Both IASI retrievals are based on the calculation of a dimensionless spectral index called the hyperspectral range

**Table 2.** Coincidence criteria and quality flags applied to the satellite and FTIR data. The third through fifth columns show the number of observations remaining after each subsequent data criteria step and the number of possible combinations between the CrIS and FTIR observations. The first set of numbers indicate the number of CrIS observations within a 1° × 1° degree square surrounding the FTIR site.

Filter	Data criteria	No. obs.		
		FTIR	CrIS	Combinations
CrIS		15 661	25 855	
Temporal sampling difference	Max 90 min	1576	13 959	112 179
Spatial sampling difference	Max 50 km	1514	3134	22 869
Elevation difference	Max 300 m	1505	1642	9713
Quality flag	DOFS ≥ 0.1	1433	1453	8579

index (HRI) (Van Damme et al., 2014a). The HRI is representative of the amount of NH<sub>3</sub> in the measured column. The IASI-LUT retrieval makes a direct conversion of the HRI to total column density with the use of a look-up table (LUT). The LUT is created using a large number of simulations for a wide range of atmospheric conditions which link the thermal contrast (TC, the difference between the air temperature at 1.5 km altitude and the temperature of the Earth's surface) and the HRI to a NH<sub>3</sub> total column density. The retrieval includes a retrieval error based on the uncertainties in the initial HRI and TC parameters. The more recent IASI-NN retrieval (Whitburn et al., 2016) follows similar steps but it makes use of a neural network. The neural network combines the complete temperature, humidity and pressure profiles for a better representation of the state of the atmosphere. At the same time the retrieval error estimate is improved by including error terms for the uncertainty in the profile shape, and the full temperature and water vapour profiles. The IASI-NN version uses the fixed profiles that were described by Van Damme et al. (2014a) but allows for the use of third party profiles to improve the representation of the NH<sub>3</sub> atmospheric profile. The IASI-LUT and IASI-NN retrievals have both been previously compared with FTIR observations (Dammers et al., 2016a, b). They compared reasonably well with correlations around  $r = 0.8$  for a set of FTIR stations, with an underestimation of around 30 % that depends slightly on the magnitude of total column amounts, with the IASI-NN performing slightly better.

## 2.4 Data criteria and quality

NH<sub>3</sub> concentrations show large variations both in space and time as a result of the large heterogeneity in emission strengths due to spatially variable sources and drivers such as meteorology and land use (Sutton et al., 2013). This high variability poses challenges in matching ground-based point observations made by FTIR observations with CrIS downward-looking satellite measurements which have a 14 km nadir footprint. For the pairing of the measurement data we apply data selection criteria similar to those described in Dammers et al. (2016a) and summarized in Table 2. To minimize the impact of the heterogeneity of the

sources, we choose a maximum of 50 km between the centre points of the CrIS observations and the FTIR site location. To diminish the effect of temporal differences between the FTIR and CrIS observations, a maximum time difference of 90 min is used. Topographical effects are reduced by choosing a maximum altitude difference of 300 m at any point between the FTIR site location and the centre point of the satellite pixel location. The altitude differences are calculated using the Space Shuttle Radar Topography Mission Global product at 3 arc-second resolution (SRTMGL3, Farr et al., 2007). To ensure the data quality of CrIS-NH<sub>3</sub> retrieval for version 1.0, a small number of outliers with a maximum retrieved concentration above 200 ppb (at any point in the profile) were removed from the comparison data set. While potentially a surface NH<sub>3</sub> value of 200 ppb (and above) is possible (i.e. downwind of forest fires), it is highly unlikely to occur over the entire footprint of the satellite instrument. Moreover, after inspecting these data points, they seem to be affected by numerical issues in the fitting procedure (possibly due to interfering species). As we are interested in validating the CrIS observational information (not just a priori information), we only select comparisons that contain some information from the satellite (degrees of freedom for signal – DOFS – ≥ 0.1). Do note that on average the observations have a DOFS between 0.9 and 1.1. The DOFS > 0.1 filter only removes some of the outliers at the lower end. No explicit filter is applied to account for clouds; however, clouds will implicitly be accounted for by quality control as CrIS will not measure a NH<sub>3</sub> signal (e.g. DOFS < 0.1) below optically thick clouds (e.g. cloud optical depth > ~ 1). In addition, the CrIS observations are matched with FTIR observations taken only during clear-sky conditions, which mostly eliminates influence from cloud cover. Finally, the high signal-to-noise ratios (SNR) of the CrIS instrument allows it to retrieve NH<sub>3</sub> from a thermal contrast approaching 0 K during daytime observations (Clarisse et al., 2010). Given this, we decided not to apply a thermal contrast filter to the CrIS data. No additional filters are applied to the FTIR observations beyond the clear-sky requirement.

For both IASI retrievals, we use the same observation selection criteria as described in Dammers et al. (2016a). The

set of criteria is similar to those used here for the CrIS observations. Observations from both IASI retrievals are matched using the overpass time, and longitudinal and latitudinal positions. For comparability with CrIS a spatial difference limit of 50 km limit was used, instead of the 25 km spatial limit used in the previous study. Furthermore we apply the thermal contrast ( $> 12$  K, difference between the temperatures at 1.5 km and the surface) and Earth's skin temperature criteria to the IASI observations to match the previous study.

## 2.5 Observational operator application

To account for the vertical sensitivity and the influence of the a priori profiles of both retrievals, we apply the observational operator (averaging kernel and a priori of the retrieval) of the FTIR retrieval to the CrIS-retrieved profiles. The CrIS observations are matched to each individual FTIR observation in time and space following the matching criteria. The FTIR averaging kernels, a priori profiles and retrieved profiles are first mapped to the CrIS pressure levels (fixed pressure grid, layers are made smaller or cut off for observations above elevation to fit the fixed pressure grid). Following Rodgers and Connor (2003) and Calisesi et al. (2005) this results in the mapped FTIR averaging kernel,  $\mathbf{A}_{\text{ftir}}^{\text{mapped}}$ , the mapped FTIR a priori,  $\mathbf{x}_{\text{ftir}}^{\text{mapped,apriori}}$ , and the mapped FTIR-retrieved profile,  $\mathbf{x}_{\text{ftir}}^{\text{mapped}}$ . Then we apply the FTIR observational operator to the CrIS observations using Eq. (1).

$$\hat{\mathbf{x}}_{\text{CrIS}} = \mathbf{x}_{\text{ftir}}^{\text{mapped,apriori}} + \mathbf{A}_{\text{ftir}}^{\text{mapped}} \left( \mathbf{x}_{\text{CrIS}} - \mathbf{x}_{\text{ftir}}^{\text{mapped,apriori}} \right) \quad (1)$$

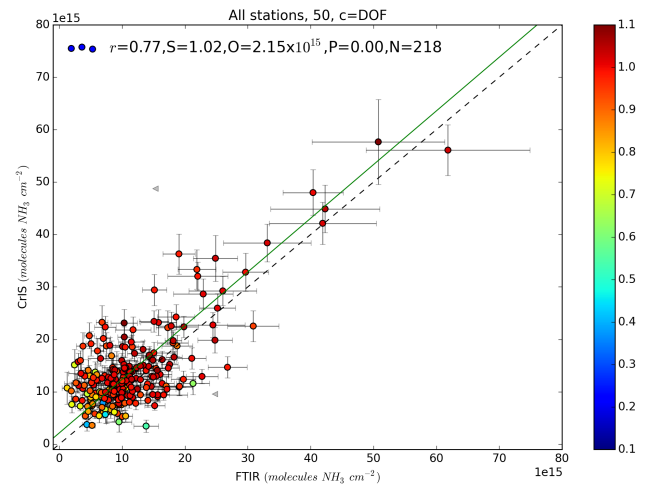
$$\hat{\Delta \mathbf{x}}_{\text{abs}} = \hat{\mathbf{x}}_{\text{CrIS}} - \mathbf{x}_{\text{ftir}}^{\text{mapped}} \quad (2)$$

$$\hat{\Delta \mathbf{x}}_{\text{rel}} = \left( \hat{\mathbf{x}}_{\text{CrIS}} - \mathbf{x}_{\text{ftir}}^{\text{mapped}} \right) / \left( 0.5 \mathbf{x}_{\text{ftir}}^{\text{mapped}} + 0.5 \cdot \hat{\mathbf{x}}_{\text{CrIS}} \right), \quad (3)$$

where  $\mathbf{x}_{\text{ftir}}^{\text{apriori}}$  is the FTIR a priori profile,  $\mathbf{x}_{\text{ftir}}^{\text{mapped}}$  is the interpolated FTIR profile,  $\mathbf{A}_{\text{ftir}}^{\text{mapped}}$  is the FTIR averaging kernel, and  $\hat{\mathbf{x}}_{\text{CrIS}}$  is the smoothed CrIS profile.

The CrIS smoothed profile  $\hat{\mathbf{x}}_{\text{CrIS}}$  calculated from Eq. (1) provides an estimate of the FTIR retrieval applied to the CrIS satellite profile. Next we evaluate both total column and profile measurements.

For the first validation step, following Dammers et al. (2016a), who evaluated the IASI-LUT (Van Damme et al., 2014a) product, we sum the individual profile ( $\hat{\mathbf{x}}_{\text{CrIS}}$ ) to obtain a column total to compare to the FTIR total columns. This step gives the opportunity to evaluate the CrIS retrieval in a similar manner as was done with the IASI-LUT retrieval. If multiple FTIR observations match a single CrIS overpass we also average those together into a single value as well as each matching averaged CrIS observation. Therefore, it is possible to have multiple FTIR observations, each with multiple CrIS observations all averaged into a single matching representative observation. For the profile comparison this averaging is not performed to keep as much detail available



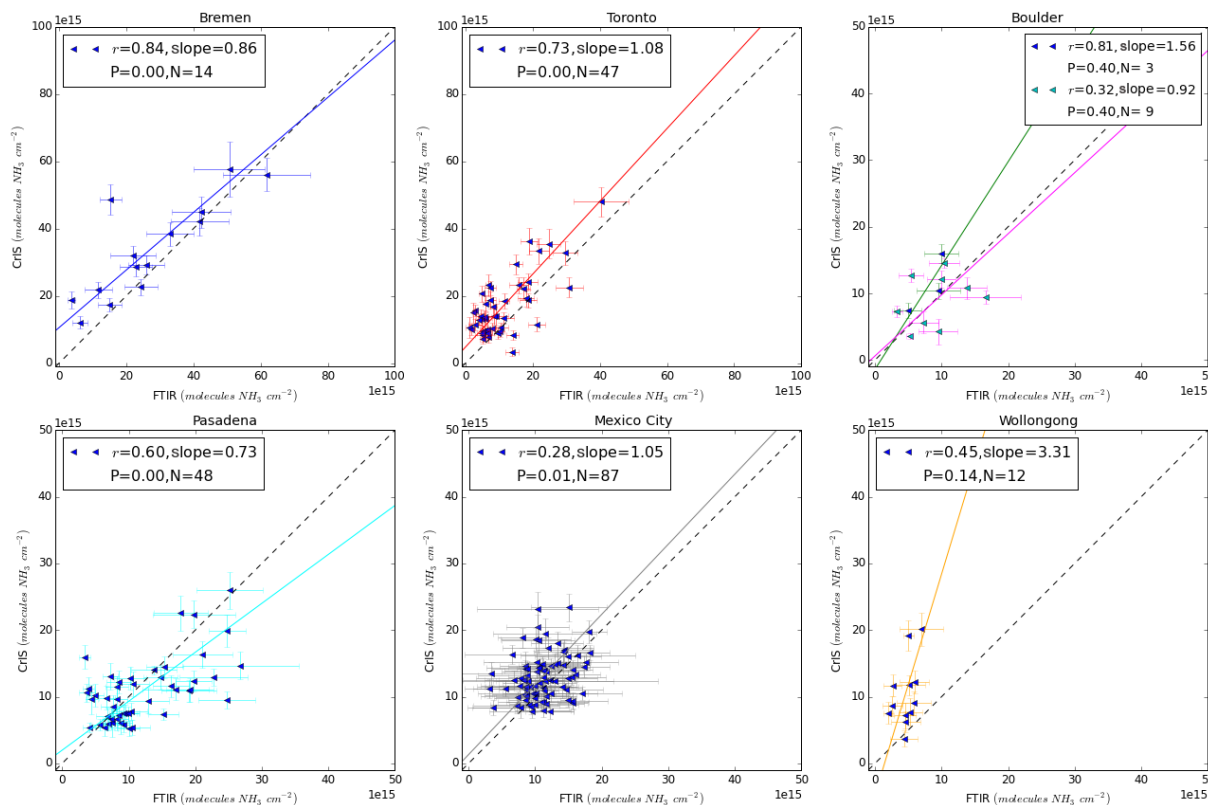
**Figure 2.** Correlation between the FTIR and CrIS total columns using the coincident data from all measurement sites. The horizontal and vertical bars show the total estimated error on each FTIR and CrIS observation. The colouring on the scatter indicates the mean DOF of each the CrIS coincident data. The trend line shows the results of the regression analysis.

as possible. An important point to make is that this approach assumes that the FTIR retrieval gives a better representation of the truth. While this may be true, the FTIR retrieval will not match the truth completely. For readability we assume that the FTIR retrieval indeed gives a better representation of the truth, and in the next sections we will describe the case in which we apply the FTIR observational operator to the CrIS values. For the tenacious reader we included a similar set of results in the appendix, using the CrIS observational operator instead of the FTIR observational operator, as the assumption of the FTIR being true is not exactly right.

## 3 Results and discussion

### 3.1 Total column comparison

The total columns are averaged as explained in Sect. 2.4 to show a direct comparison of FTIR measurements with CrIS observations in Fig. 2. A  $3\sigma$  outlier filter was applied to calculate the regression statistics. The filtered outliers are displayed in grey, and may be caused by low information content (DOFS) and terrain characteristics. For the regression we used the reduced major axis regression (Bevington and Robinson, 1992), accounting for possible errors both in the  $x$  and  $y$  values. There is an overall agreement with a correlation of  $r = 0.77$  ( $P < 0.01$ ,  $N = 218$ ) and a slope of 1.02 ( $\pm 0.05$ ). At the lower range of values the CrIS column totals are higher than the observed FTIR values. The CrIS retrieval possibly overestimates due to the low sensitivity to low concentrations. Without the sensitivity the retrieval will find a value more closely to the a priori, which may be too high.



**Figure 3.** FTIR vs. CrIS comparison scatter plots showing the correlations for each of the individual stations, with estimates of error plotted for each value. The trend lines show the individual regression results. Note the different ranges on the  $x$  and  $y$  axis. The results for the Boulder (green line) and Lauder (pink line) sites are shown in the same panel.

Figure 3 shows the comparisons at each station. When the comparisons are broken down by station (Fig. 3), the correlation varies from site to site, from a minimum of 0.28 in Mexico City (possibly due to retrieval errors associated with the highly irregular terrain) to a maximum of 0.84 in Bremen. Similarly to Mexico City the comparison also shows an increase in scatter for Pasadena, where the FTIR site is also located on a hill. In Toronto and Bremen there is good agreement when NH<sub>3</sub> is elevated ( $> 20 \times 10^{15}$  molecules  $\text{cm}^{-2}$ ), and low bias in the CrIS total columns for intermediate values (between  $10$  and  $20 \times 10^{15}$  molecules  $\text{cm}^{-2}$ ) except for the outlying observation in Bremen, which is marked as an outlier by our  $3\sigma$  filter used for Fig. 2. In Wollongong, there is less agreement between the instruments. There are two comparisons with large CrIS to FTIR ratios while most of the other comparisons also show a bias for CrIS. For both cases the bias can be explained by the heterogeneity of the ammonia concentrations in the surrounding regions. The two outlying observations were made during the end of November 2012, which coincides with wildfires in the surrounding region. Furthermore the Wollongong site is located on the coast, which will increase the occurrences in which one instrument observes clean air from the ocean while the other observes inland air masses.

The mean absolute (MD) and relative difference (MRD) are calculated following Eqs. (4) and (5);

$$\text{MRD} = \frac{1}{N} \sum_{i=1}^N \frac{(\text{CrIS column}_i - \text{FTIR column}_i) \times 100}{0.5 \times \text{FTIR column}_i + 0.5 \times \text{CrIS column}_i} \quad (4)$$

$$\text{MD} = \frac{1}{N} \sum_{i=1}^N (\text{CrIS column}_i - \text{FTIR column}_i) \quad (5)$$

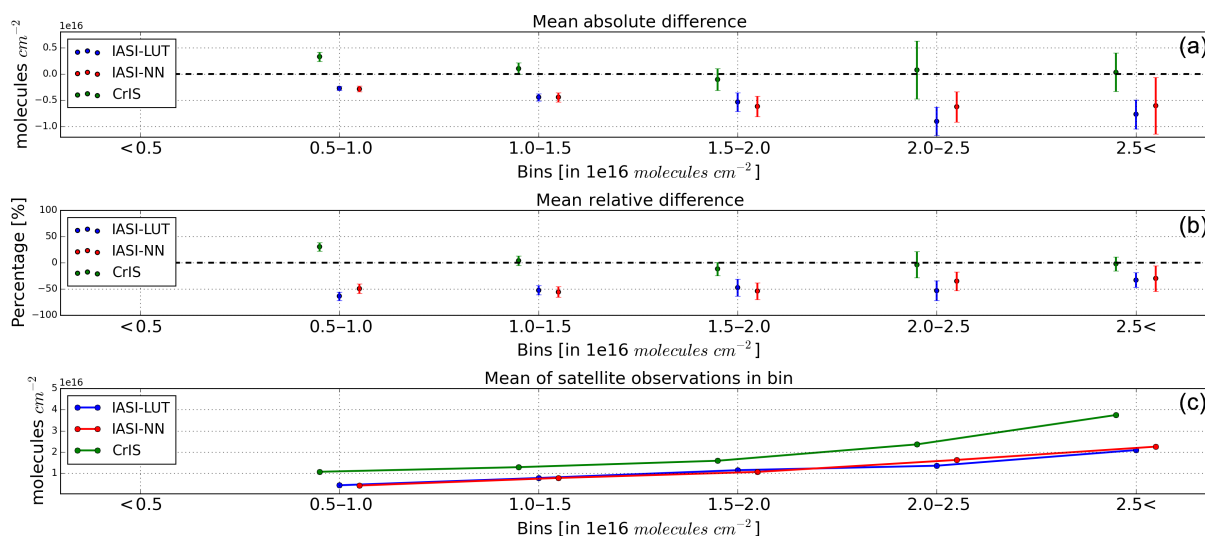
with  $N$  being the number of observations.

We evaluate the data by subdividing the comparisons over a set of total column bins as a function of the FTIR total column value of each individual observation. The bins (with a range of  $5 \times 10^{15}$  to  $25 \times 10^{15}$  molecules  $\text{cm}^{-2}$  with iterations steps of  $5 \times 10^{15}$  molecules  $\text{cm}^{-2}$ ) give a better representation of the performance of the retrieval as it shows the influence of the retrieval as a function of the magnitude of the total column densities. The results of these total column comparisons are presented in Fig. 4. Table 3 summarizes the results for each of the FTIR to satellite column comparisons into two total column bins, which splits the comparisons between smaller and larger than  $10 \times 10^{15}$  molecules  $\text{cm}^{-2}$ . A few combinations of the IASI-NN and FTIR retrievals have a small denominator value that causes problems in the calculation of the MRD. A  $3\sigma$  outlier filter based on



**Table 3.** Results of the total column comparisons of the FTIR to CrIS, FTIR to IASI-LUT and FTIR to IASI-NN.  $N$  is the number of averaged total columns, MD is the mean difference [ $10^{15}$  molecules  $\text{cm}^{-2}$ ], MRD is the mean relative difference [frac, in %]. Take note that the combined value  $N$  does not add up with all the separate sites as observations have been included for FTIR total columns  $> 5 \times 10^{15}$  molecules  $\text{cm}^{-2}$ .

Retrieval	Column total range in molecules $\text{cm}^{-2}$	$N$	MD in $10^{15}$ ( $1\sigma$ )	MRD in % ( $1\sigma$ )	FTIR mean in $10^{15}$ ( $1\sigma$ )
CrIS-NH3	$< 10.0 \times 10^{15}$	93	3.3 (4.1)	30.2 (38.0)	7.5 (1.5)
CrIS-NH3	$\geq 10.0 \times 10^{15}$	109	0.4 (5.3)	-1.39 (34.4)	16.7 (8.5)
IASI-LUT	$< 10.0 \times 10^{15}$	229	-2.7 (3.0)	-63.6 (62.6)	7.1 (1.4)
IASI-LUT	$\geq 10.0 \times 10^{15}$	156	-5.1 (4.2)	-50.2 (43.6)	14.8 (6.7)
IASI-NN	$< 10.0 \times 10^{15}$	212	-2.2 (3.6)	-57.0 (68.7)	7.1 (1.4)
IASI-NN	$\geq 10.0 \times 10^{15}$	156	-5.0 (5.1)	-52.5 (49.7)	14.8 (6.7)



**Figure 4.** Plots of the mean absolute and relative differences between CrIS and IASI, as a function of NH<sub>3</sub> total column. Observations are separated into bins of total columns. Panel (a) shows the mean absolute difference (MD). Panel (b) shows the mean relative difference. The bars in these top two panels show the 95 % confidence interval for each value. Panel (c) shows the mean of the observations in each bin. The number of observations in each set is shown in the bottom panel.

the relative difference is applied to remove these outliers ( $< 10 \times 10^{15}$  molecules  $\text{cm}^{-2}$ , only the IASI-NN set). The statistical values are not given separately by site because of the low number of matching observations for a number of the sites.

The CrIS/FTIR comparison results show a large positive difference in both the absolute (MD) and relative (MRD) for the smallest bin, ( $5.0\text{--}10.0 \times 10^{15}$  molecules  $\text{m}^{-2}$ ). The rest of the CrIS/FTIR comparison bins with NH<sub>3</sub> values  $> 10.0 \times 10^{15}$  agree very well with a nearly constant bias (MD) around zero, and a standard deviation of the order of  $5.0 \times 10^{15}$ , which slightly dips below zero in the middle bin. The standard deviation over these bins is also more or less constant, and the weak dependence on the number of observations in each bin indicates that most of the effect is coming from the random error on the observations. The relative difference becomes systematically smaller with in-

creasing column total amounts, and tends towards zero with a standard deviation  $\sim 25\text{--}50\%$ , which is on the order of the reported estimated errors of the FTIR retrieval (Dammers et al., 2015).

For a comparison with previous reported satellite results, we included both the IASI-LUT (Van Damme et al., 2014a) and the IASI-NN (Whitburn et al., 2016) comparisons with the FTIR observations. To put the results of this study into perspective of the IASI-LUT and IASI-NN products we added Fig. A1 to the Appendix, which shows the total column comparison for both products. The IASI products show similar differences as a function of NH<sub>3</sub> column bins, which is somewhat different from the CrIS/FTIR comparison results. The absolute difference (MD) is mostly negative with the smallest factor for the smallest total column bin, with a difference around  $-2.5 \times 10^{15}$  ( $\text{std} = \pm 3.0 \times 10^{15}$ ,  $N = 229$ ) molecules  $\text{cm}^{-2}$ , which slowly increases as a func-

tion of the total column. However, the relative difference (MRD) is at its maximum for the smaller bin with a difference of the order  $-50\%$  ( $\text{std} = \sim \pm 50\%$ ,  $N = 229$ ) which decreases to  $\sim -10$ – $25\%$  ( $\text{std} = \pm 25\%$ ) with increasing bin value. For both the IASI-NN and IASI-LUT retrievals we find an underestimation of the total columns, which originates mostly from a large systematic error in combination with more randomly distributed error sources such as the instrument noise and interfering species, which are similar to results reported earlier for IASI-LUT (Dammers et al., 2016b).

A number of factors, besides the earlier reported FTIR uncertainties, can explain the differences between the FTIR and CrIS measurements. The small positive bias found for CrIS points to a small systematic error. The higher SNR, from both the low radiometric noise and high spectral resolution, enables it to resolve smaller gradients in the retrieved spectra, which can potentially provide greater vertical information and detect smaller column amounts (lower detection limit). This could explain the larger MRD and MD CrIS differences at the lower end of the total column range. However, a number of standalone tests with the FTIR retrieval showed only a minor increase in the total column following a decrease in spectral resolution, which indicates that the spectral resolution itself is not enough to explain the difference.

### 3.2 Profile comparison

The CrIS-satellite- and FTIR-retrieved profiles are matched using the criteria specified above in Table 2 and compared. It is possible for a CrIS observation to be included multiple times in the comparison as there can be more than one FTIR observation per day, and/or, the possibility of multiple satellite overpasses that match a single FTIR observation.

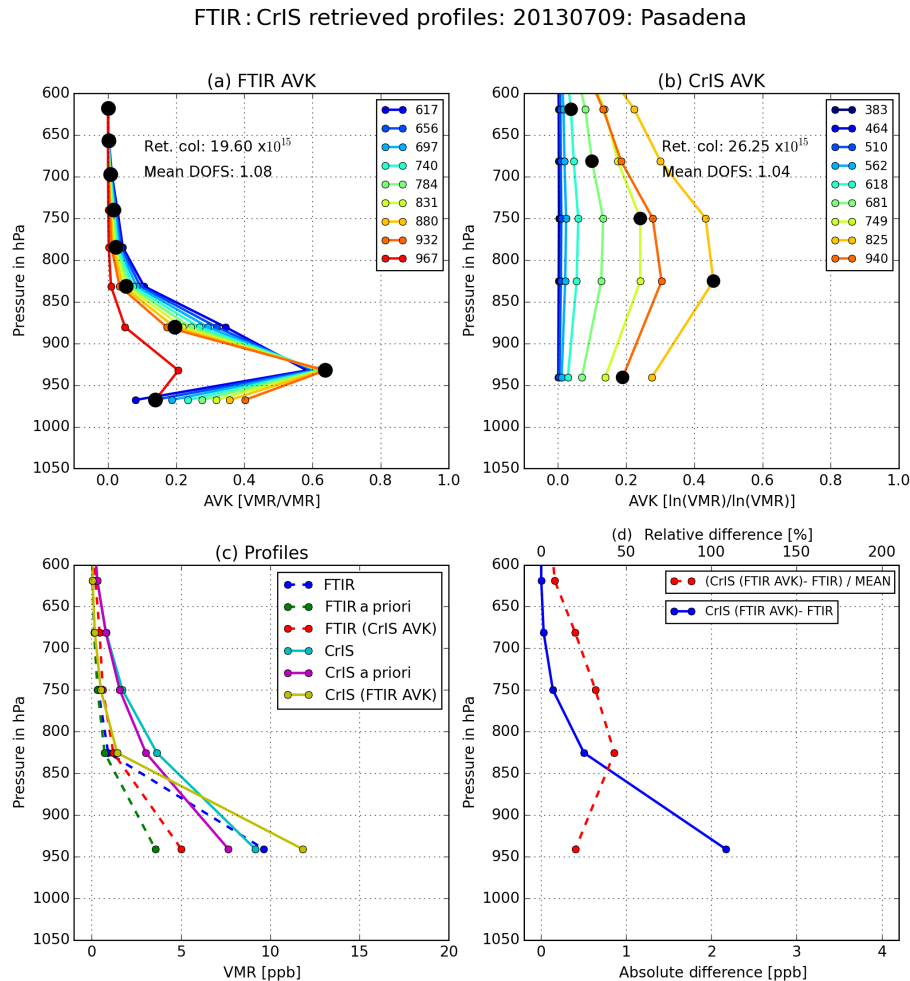
#### 3.2.1 A representative profile example

An example of the profile information contained in a representative CrIS and FTIR profile is shown in Fig. 5. Although the vertical sensitivity and distribution of NH<sub>3</sub> differs per station this is fairly representative. The FTIR usually has a somewhat larger DOFS of the order of 1.0–2.0, mostly depending on the concentration of NH<sub>3</sub> compared to the CrIS total of  $\sim 1$  DOFS. Figure 5a shows an unsmoothed FTIR averaging kernel [ $\text{vmr vmr}^{-1}$ ] of a typical FTIR observation. The averaging kernel (AVK) peaks between the surface and  $\sim 850$  hPa, which is typical for most observations. In specific cases with plumes passing over the site, the averaging kernel peak is at a higher altitude, matching the location of the NH<sub>3</sub> plume. The CrIS averaging kernel (Fig. 5b) usually has a maximum somewhere in between 680 and 850 hPa depending on the local conditions. This particular observation has a maximum near the surface, an indication of a day with high thermal contrast. Both the FTIR and CrIS concentration profiles have a maximum at the surface with a con-

tinuous decrease that mostly matches the a priori profile in a shape following the low DOFS. This is visible for layers at the lower pressures (higher altitudes) where the FTIR and CrIS a priori and retrieved volume mixing ratios become similar and near zero. The absolute difference between the FTIR and CrIS profiles can be calculated by applying the FTIR observational operator to the CrIS profile, as we described in Sect. 2.5. The largest absolute difference (Fig. 5d) is found at the surface, which is also generally where the largest absolute NH<sub>3</sub> values occur. The FTIR smoothed relative difference (red, striped line) peaks at the pressure where the sensitivity of the CrIS retrieval is highest ( $\sim 55\%$ ), which goes down to  $\sim 20$ – $30\%$  for the higher altitude and surface pressure layers. Overall the retrievals agree with most of the difference explained by the estimated errors of the individual retrievals. For an illustration of the systematic and random errors on the FTIR and CrIS profiles shown in Fig. 5; see the figures in the Appendix. For the FTIR error profile see Fig. A2 (absolute error) and Fig. A3 (relative error) and for the CrIS measurement error profile see Fig. A4. Please note that we only show the diagonal error covariance values for each of the errors, which is common practice. The total column of our example profile is  $\sim 20 \times 10^{15}$  molecules  $\text{cm}^{-2}$  which is a slightly larger value than average. The total random error is  $< 10\%$  for each of the layers, mostly dominated by the measurement error, which is somewhat smaller than average (Dammers et al., 2015) following the larger NH<sub>3</sub> VMR. A similar value is found for the CrIS measurement error with most layers showing an error  $< 10\%$ . The FTIR systematic error is around  $\sim 10\%$  near the surface and grows to  $40\%$  for the layers between 900 and 750 hPa. The error is mostly due to the errors in the NH<sub>3</sub> spectroscopy (Dammers et al., 2015). The shape of the relative difference between the FTIR and CrIS closely follows the shape systematic error on the FTIR profile, pointing to that error as the main cause of difference.

#### 3.2.2 All paired data

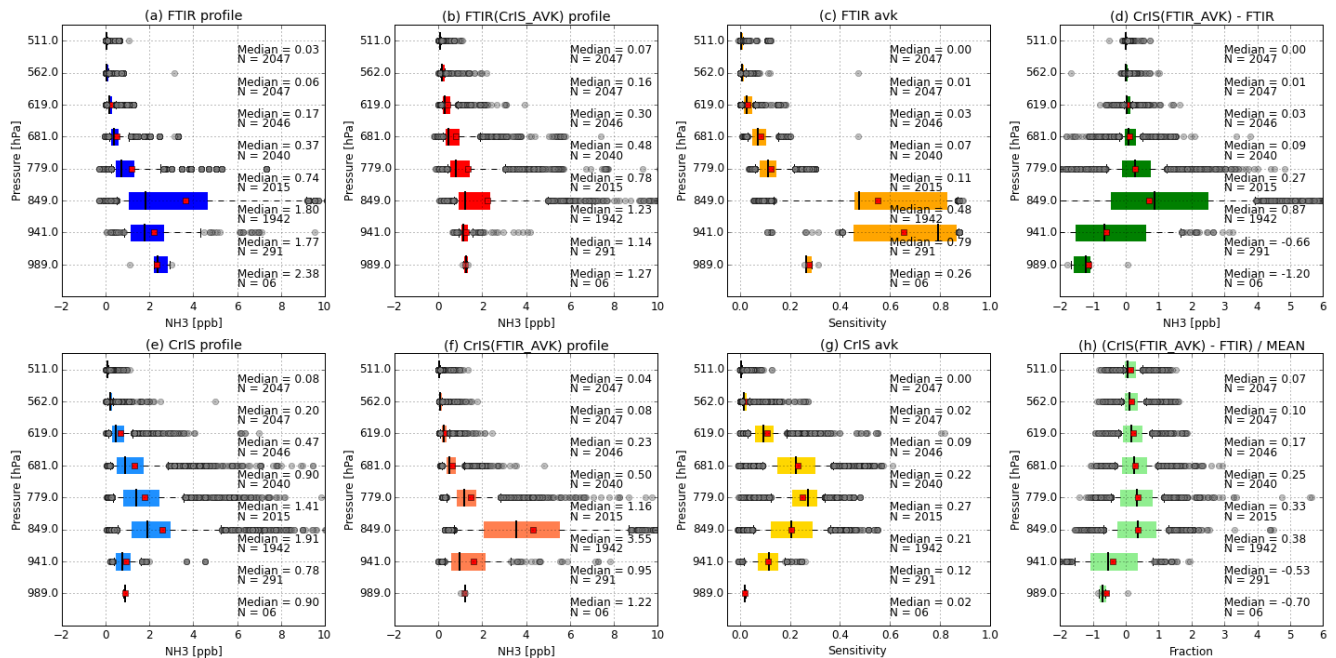
In Fig. 6 all the individual site comparisons were merged. The Mexico City site was left out of this figure because of the large number of observations in combination with a difference in pressure grid due to the high altitude of the city obscuring the overall analysis and biasing the results towards the results of one station. Similar to the single profile example, the FTIR profile peaks near the surface for most observations, slowly going towards zero with decreasing pressure. When compared to the representative profile example a number of differences emerge. A number of FTIR observations peak further above the surface and are shown as outliers, which drag the mean further away from the median values. The combined CrIS profile in Fig. 6 shows a similar behaviour, although for the lowest pressure layer it has a lower median and mean compared to the layer above. The difference between Figs. 5 and 6e derives mostly from the number



**Figure 5.** Example of the NH<sub>3</sub> profile comparison for an FTIR profile matched with a CrIS profile measured around the Pasadena site. With (a) the FTIR averaging kernel, (b) the CrIS averaging kernel. For both averaging kernels the black dots show the matrices diagonal values. (c) shows the retrieved profiles of both FTIR (blue) and CrIS (cyan) with the FTIR values mapped to the CrIS pressure layers. Also shown are the FTIR a priori (green), the CrIS a priori (purple), the CrIS-retrieved profile smoothed with the FTIR averaging kernel [CrIS (FTIR AVK)] (yellow) and the FTIR profile smoothed with the CrIS averaging kernel [FTIR (CrIS AVK)] (red). In (d), the blue line is the absolute difference between the FTIR profile (blue, c) and the CrIS profile smoothed with the FTIR averaging kernel (yellow, c) with the red line as the corresponding relative difference.

of observations used in the box plot, many with weak sensitivity at the surface. Similar to the single profile example in Fig. 5, the FTIR averaging kernels in Fig. 6c peak on average near or just above the surface (with the diagonal elements of the AVK's shown in the figure). The sensitivity varies a great deal between the observations as shown by the large spread of the individual layers. The CrIS averaging kernels (Fig. 6g) usually peak in the boundary layer around the 779 hPa layer with the two surrounding layers having somewhat similar values. The instrument is less sensitive to the surface layer as is demonstrated by the large decrease in the AVK near the surface, but this varies depending on the local conditions. We find the largest absolute differences in the lower three layers, as was seen in the example in Fig. 5, although the differences decrease rather than increase. The relative difference shows

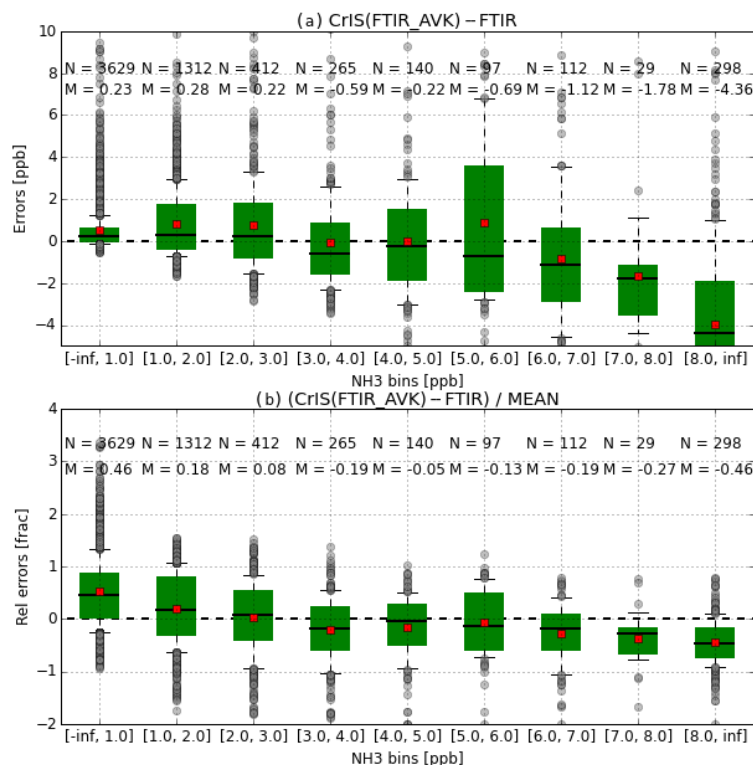
a similar shape to Fig. 5. Overall both retrievals show agreement. The relative differences in the single-level retrieved profile values in Fig. 6h show an average difference in the range of  $\sim 20$  to 40% with the 25th and 75th percentiles at around 60–80%, which partially follows from our large range of concentrations. The absolute difference shows an average difference in the range of  $-0.66$  to  $0.87$  ppb around the peak sensitivity levels of the CrIS observations (681 to 849 hPa). The lower number of surface observations follow on from the fact that only the Bremen site is located at an altitude low enough for the CrIS retrieval to provide a result at this pressure level. Due to this difference in retrieval layering, the remaining 227 observations mostly follow from matching observations in Bremen, which is located in a region of significant NH<sub>3</sub> emissions.



**Figure 6.** Profile comparison for all stations combined. Observations are combined following pressure “bins”, i.e. the midpoints of the CrIS pressure grid. Panel (a) shows the mean profiles of the FTIR (blue), (b) the profiles of FTIR with the CrIS averaging kernel applied to it (red), (c) the FTIR averaging kernel diagonal values, and (d) shows the absolute difference [VMR] between profiles (f) and (a). The second row shows the CrIS mean profile in (e), (f) shows the profiles of CrIS with the FTIR averaging kernel applied, (g) the CrIS averaging kernel diagonal values, (h) the relative difference [Fraction] between the profiles in (f) and (a). Each of the boxes edges are the 25th and 75th percentiles, the black lines in each box is the median, the red square is the mean, the whiskers are the 10th and 90th percentiles, and the grey circles are the outlier values outside the whiskers.

The switch between negative and positive values in the absolute difference (see Fig. 6d) occurs in the two lowest layers dominated by the Bremen observations and provides insight into the relation between absolute differences as a function of retrieved concentration. Figure 7 shows a summary of the differences as a function of the individual NH<sub>3</sub> VMR layer amounts. As seen before in the column comparison, e.g. Figs. 2 and 4, the CrIS retrieval gives larger total columns than the FTIR retrieval for the small values of VMR. For increasing VMRs, this slowly tends to a negative absolute difference with a relative difference in the range of 20–30%. However, note that the number of compared values in these high VMR bins are by far lower than in the first three bins leading to a relatively smaller effect in the total column and merged VMR figures (Figs. 2 and 6) from these high VMR bins. We now combine the results of Figs. 6 and 7 with Fig. 8 to create a set of subplots showing the difference between both retrieved profiles as a function of the maximum VMR of each retrieved FTIR profile. For the layers with pressure less than 681 hPa we generally find agreement, which is expected but not very meaningful, since there is not much NH<sub>3</sub> (and thus sensitivity) in these layers and any differences are smoothed out by the application of the observational operator. The relative differences for these layers all lie around ~0–20%. For the lowest two VMR bins

we again find that CrIS gives larger results than the FTIR, around the CrIS sensitivity peak in the layer centred around 849 hPa, and to a lesser extent in the layer below. At these VMR levels (< 2 ppb) the NH<sub>3</sub> signal approaches the spectral noise of the CrIS measurement, making the retrievals more uncertain. The switch lies around 2–3 ppb, where the difference in the SNR between the instruments becomes less of an issue. Also easily observed is the relation between the concentration and the absolute and relative differences. This can be explained by the difference in sensitivity of the instruments, and the measurement noise of both instruments. For the largest VMR bin [> 4.0 ppb] we find that CrIS is biased for the four lowest layers. Differences are largest in the surface layer where only a few observations are available, almost all from the Bremen site. Most of these CrIS observations have a peak satellite sensitivity at a higher altitude than the FTIR. Assuming that most of the NH<sub>3</sub> can be found directly near the surface, with the concentration dropping off with a sharp gradient as a function of altitude, it is likely that these concentrations are not directly observed by the satellite but are observed by the FTIR instruments. This difference in sensitivity should be at least partially removed by the application of the observational operator but not completely, due to the intrinsic differences between both retrievals. The CrIS retrieval uses one of three available a priori profiles, which



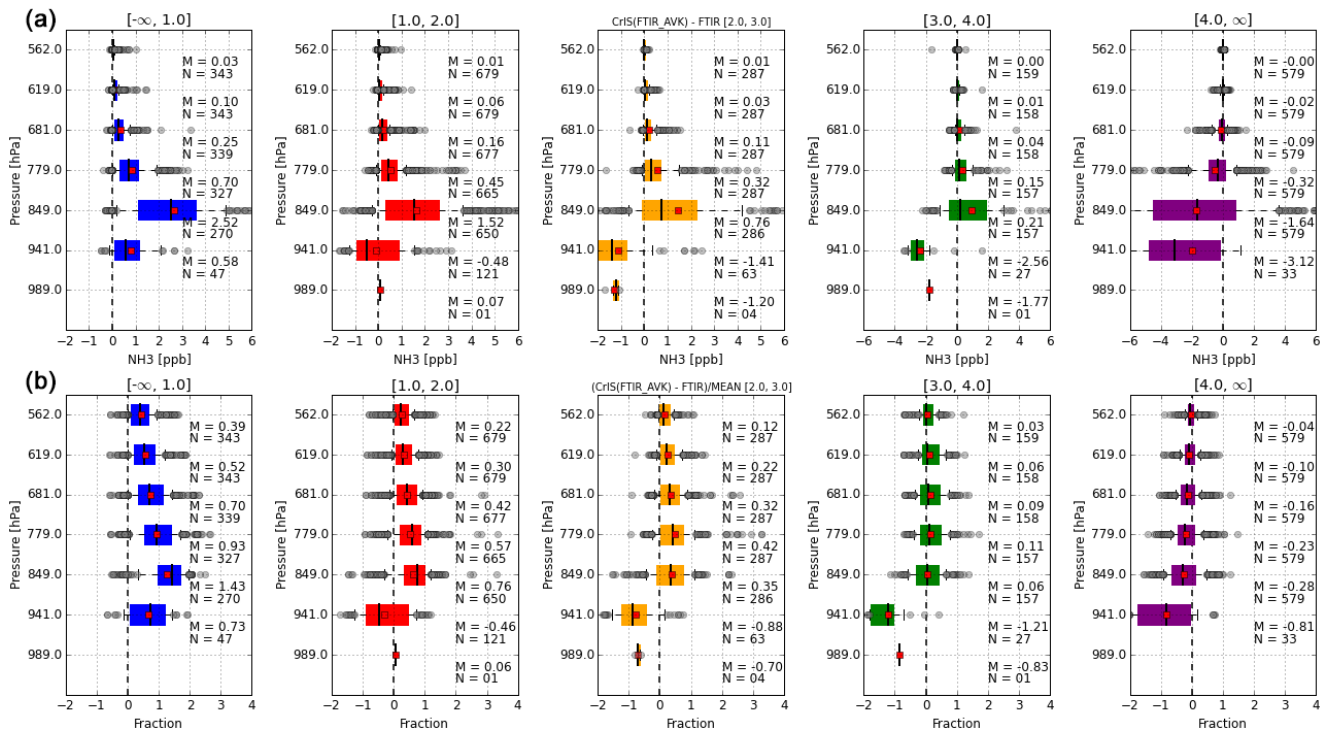
**Figure 7.** Summary of the absolute and relative actual error as a function of the VMR of NH<sub>3</sub> in the individual FTIR layers. The box edges are the 25th and 75th percentiles, the black line in the box is the median, the red square is the mean, the whiskers are the 10th and 90th percentiles, and the grey circles are the outlier values outside the whiskers. Only observations with a pressure greater than 650 hPa are used. The top panel shows the absolute difference for each VMR bin, the bottom panel shows the relative difference for each VMR bin.

is chosen following a selection based on the strength of NH<sub>3</sub> signature in the spectra. The three a priori profiles (unpolluted, moderately polluted and polluted) are different in both shape and concentration. Out of the entire set of 2047 combinations used in Fig. 8, only six are from the non-polluted a priori category. About one-third of the remaining observations use the polluted a priori, which has a sharper peak near the surface (see Fig. 5c) compared to the moderately polluted profile, which is used by two-thirds of the CrIS retrievals shown in this work. Based on the results as a function of retrieved VMR (as measured with the FTIR so not a perfect restriction), it is possible that the sharper peak at the surface as well as the low a priori concentrations are restricting the retrieval. The dependence of the differences on VMR can also possibly follow from uncertainties in the line spectroscopy. In the lower troposphere there is a large gradient in pressure and temperature and the impact of any uncertainty in the line spectroscopy is greatly enhanced. Even for a day with large thermal contrast and NH<sub>3</sub> concentrations (e.g. Fig. 5), the difference between both the CrIS and FTIR retrievals was dominated by the line spectroscopy. This effect is further enhanced by the higher spectral resolution and reduced instrument noise of the FTIR instrument, which potentially makes it more able to resolve the line shapes.

To summarize, the overall differences between both retrievals are quite small, except for the lowest layers in the NH<sub>3</sub> profile where CrIS has less sensitivity. The differences mostly follow the errors as estimated by the FTIR retrieval and further effort should focus on the estimated errors and uncertainties. A way to improve the validation would be to add a third set of measurements with a better capability to vertically resolve NH<sub>3</sub> concentrations from the surface up to ~750 hPa (i.e. the first 2500 m). One way to do this properly is probably by using airplane observations that could measure a spiral around the FTIR path coinciding with a CrIS overpass. The addition of the third set of observations would improve our capabilities to validate the satellite and FTIR retrievals and point out which retrieval specifically is causing the absolute and relative differences at each of the altitudes.

#### 4 Conclusions

Here we presented the first validation of the CrIS-NH<sub>3</sub> product using ground-based FTIR-NH<sub>3</sub> observations. The total column comparison shows that both retrievals have a correlation of  $R = 0.77$  ( $P < 0.01$ ,  $N = 218$ ) and almost no bias with an overall slope of 1.02 (std = ±0.05). For the individual stations we find varying levels of agreement, mostly lim-

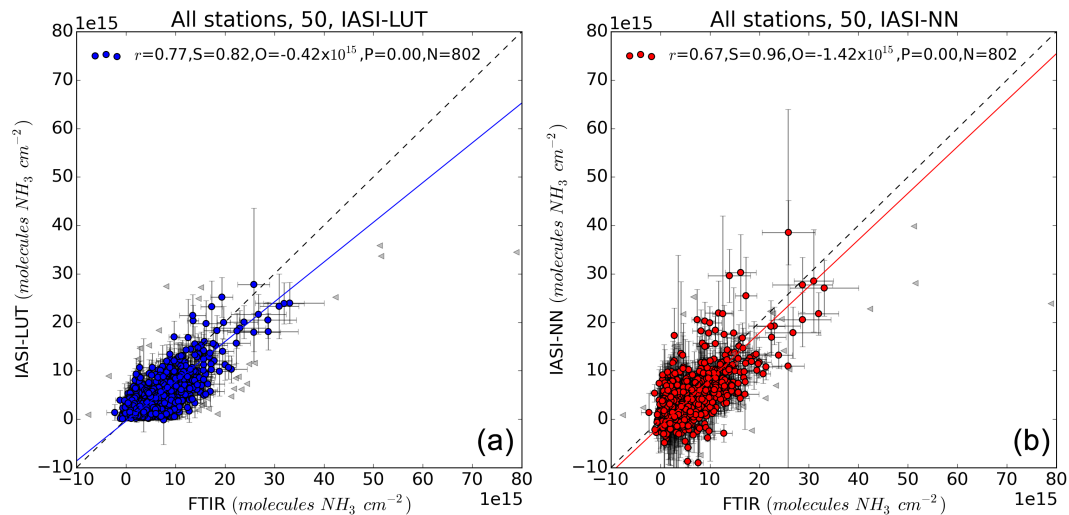


**Figure 8.** Summary of differences as a function of maximum volume mixing ratio (VMR). The maximum VMR of each FTIR profiles is used for the classification. Absolute (a) and relative profile differences (b) following the FTIR and CrIS (FTIR AVK applied) profiles. Observations are following pressure layers, i.e. the midpoints of the CrIS pressure grid. The box edges are the 25th and 75th percentiles, the black line in the box is the median, the red square is the mean, the whiskers are the 10th and 90th percentiles, and the grey circles are the outlier values outside the whiskers.

ited by the small range of NH<sub>3</sub> total columns. For FTIR total columns  $> 10 \times 10^{15}$  molecules  $\text{cm}^{-2}$  the CrIS and FTIR observations are in agreement with only a small bias of 0.4 (std =  $\pm 5.3$ )  $\times 10^{15}$  molecules  $\text{cm}^{-2}$ , and a relative difference 4.57 (std =  $\pm 35.8$ ) %. In the smaller total column range the CrIS retrieval shows a positive bias with larger relative differences 49.0 (std =  $\pm 62.6$ ) % that mostly seem to follow from observations near the CrIS detection limit. The results of the comparison between the FTIR and the IASI-NN and IASI-LUT retrievals are comparable to those found in earlier studies. Both IASI products showed smaller total column values compared to the FTIR, with a MRD  $\sim -35 - -40$  %. On average, the CrIS retrieval has one piece of information, while the FTIR retrieval shows slightly more vertical information with DOFS in the range of 1–2. The NH<sub>3</sub> profile comparison shows similar results, with a small mean negative difference between the CrIS and FTIR profiles for the surface layer and a positive difference for the layers above the surface layer. The relative and absolute differences in the retrieved profiles can be explained by the estimated errors of the individual retrievals. Two causes of uncertainty stand out with the NH<sub>3</sub> line spectroscopy being the biggest factor, showing errors of up to 40 % in the profile example. The second factor is the signal-to-noise ratio of both instru-

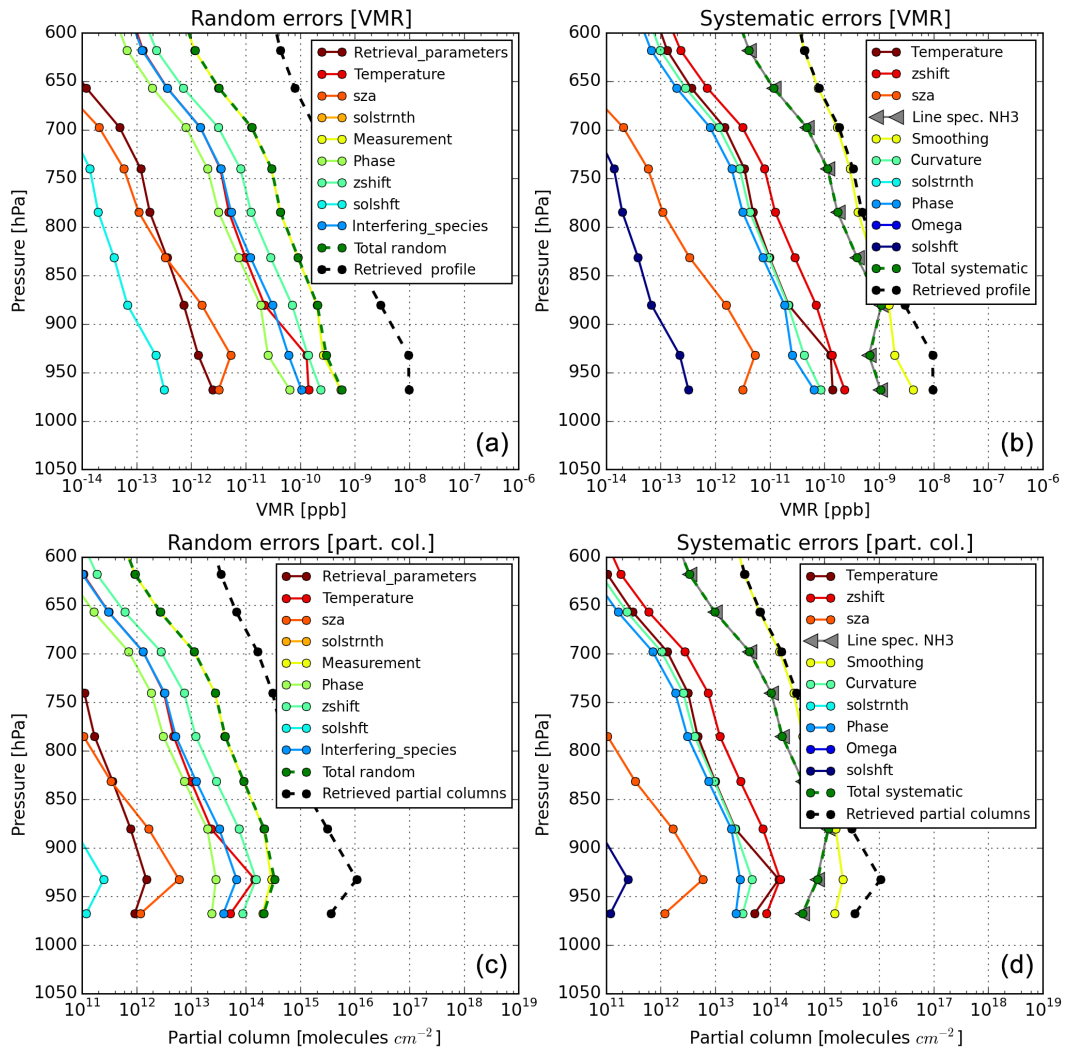
ments which depends on the VMR: under large NH<sub>3</sub> concentrations, the FTIR uncertainty in the signal is in the range of 10 %; for measurements with small NH<sub>3</sub> concentrations this greatly increases. Future work should focus on improvements to the NH<sub>3</sub> line spectroscopy to reduce the uncertainty coming from this error source. Furthermore an increased effort is needed to acquire coincident measurements with the FTIR instruments during satellite overpasses as a dedicated validation effort will greatly enhance the number of available observations. Furthermore, a third type of observation measuring the vertical distribution of NH<sub>3</sub> could be used for comparisons with both the FTIR and CrIS retrievals to further constrain the differences. These observations could be provided by an airborne instrument flying in spirals around an FTIR site during a satellite overpass.

*Data availability.* FTIR-NH<sub>3</sub> data (Dammers et al., 2015) can be made available on request (M. Palm, Institut für Umweltphysik, University of Bremen, Bremen, Germany). The CrIS-FRP-NH<sub>3</sub> science grade (non-operational) data products used in this study can be made available on request (M. W. Shephard, Environment and Climate Change Canada, Toronto, Ontario, Canada). The IASI-NH<sub>3</sub> product is freely available at <http://www.pole-ether.fr/etherTypo/index.php?id=1700&L=1> (Van Damme et al., 2015a).

**Appendix A: Validation of CrIS-NH<sub>3</sub>, supplementary figures**

**Figure A1.** Correlation between the FTIR and the IASI-LUT (a, blue) and IASI-NN (b, red) total columns using the coincident data from all measurement sites. The horizontal and vertical bars show the total estimated error on each FTIR and CrIS observation. A  $3\sigma$  outlier filter was applied to the IASI-LUT data set and the same observations were removed from the IASI-NN set. In contrast to the earlier study by Dammers et al. (2016a) no thermal contrast filter was applied to the data set.

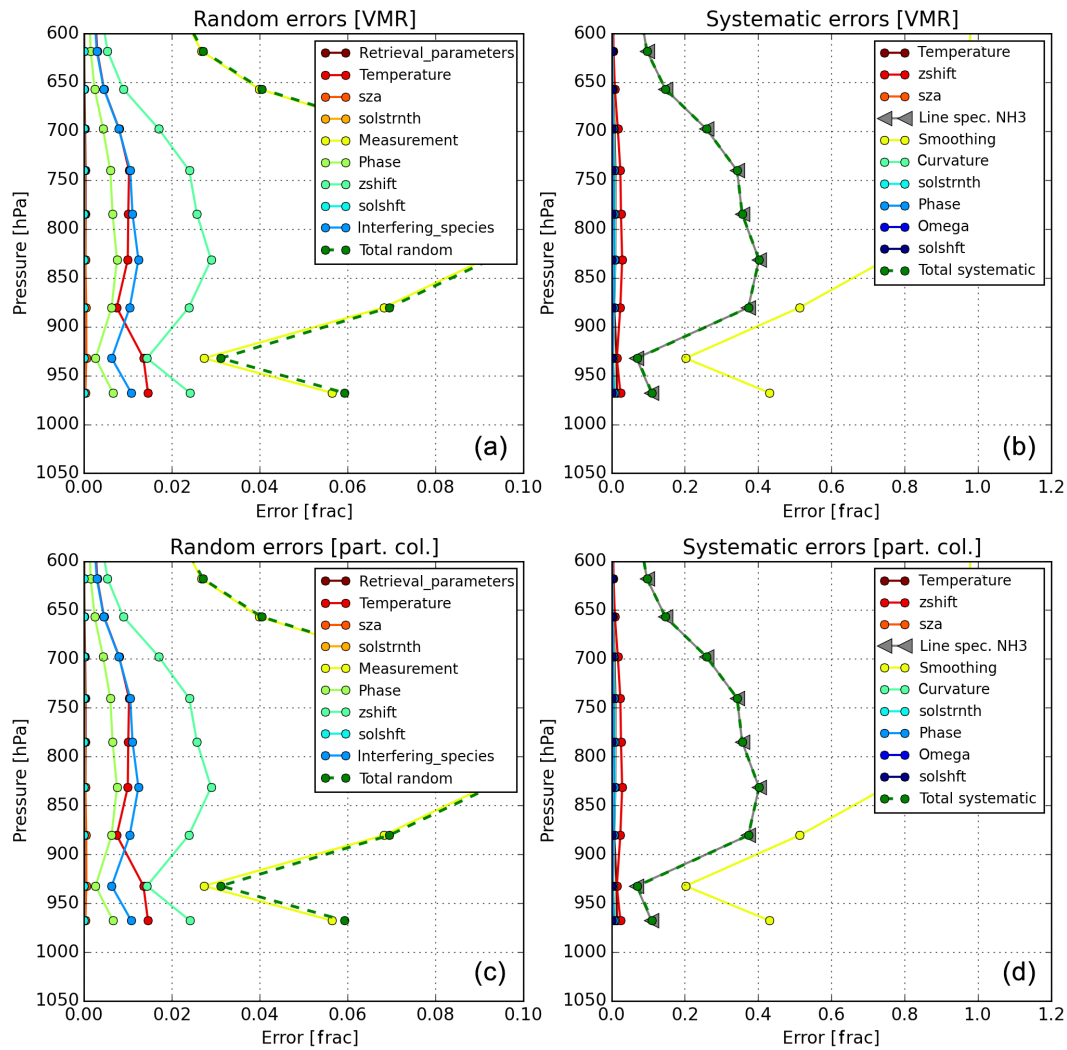
FTIR error summary: 20130709: Pasadena



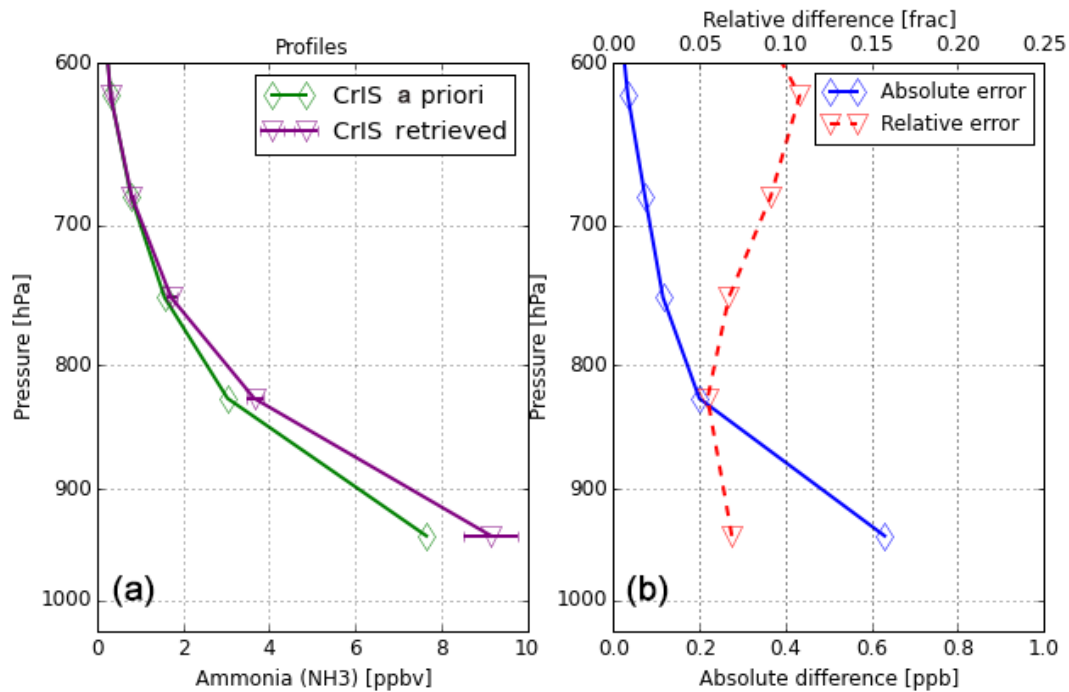
**Figure A2.** Error profiles for each of the error terms. Panels (a, c) show the random errors, (b, d) the systematic errors. The top two panels show the error in VMR. The bottom panels show the errors in partial column layers [molecules cm<sup>-2</sup>]. See Fig. A3 for the same figure but with the errors relative to the final VMR and partial columns per layer.



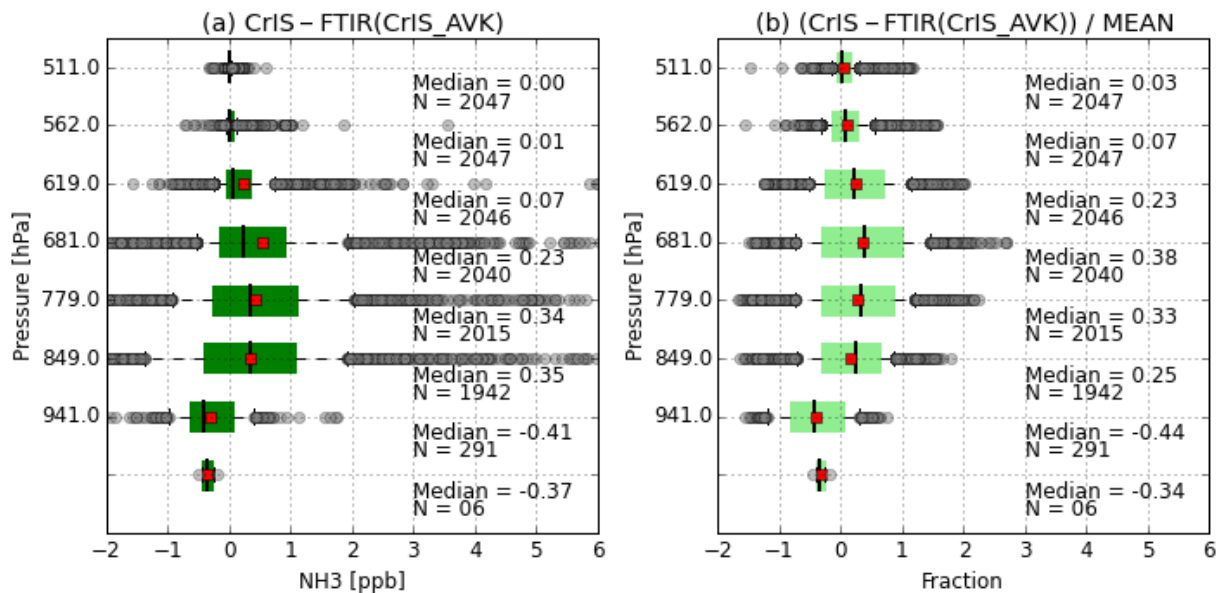
## FTIR error summary: 20130709: Pasadena



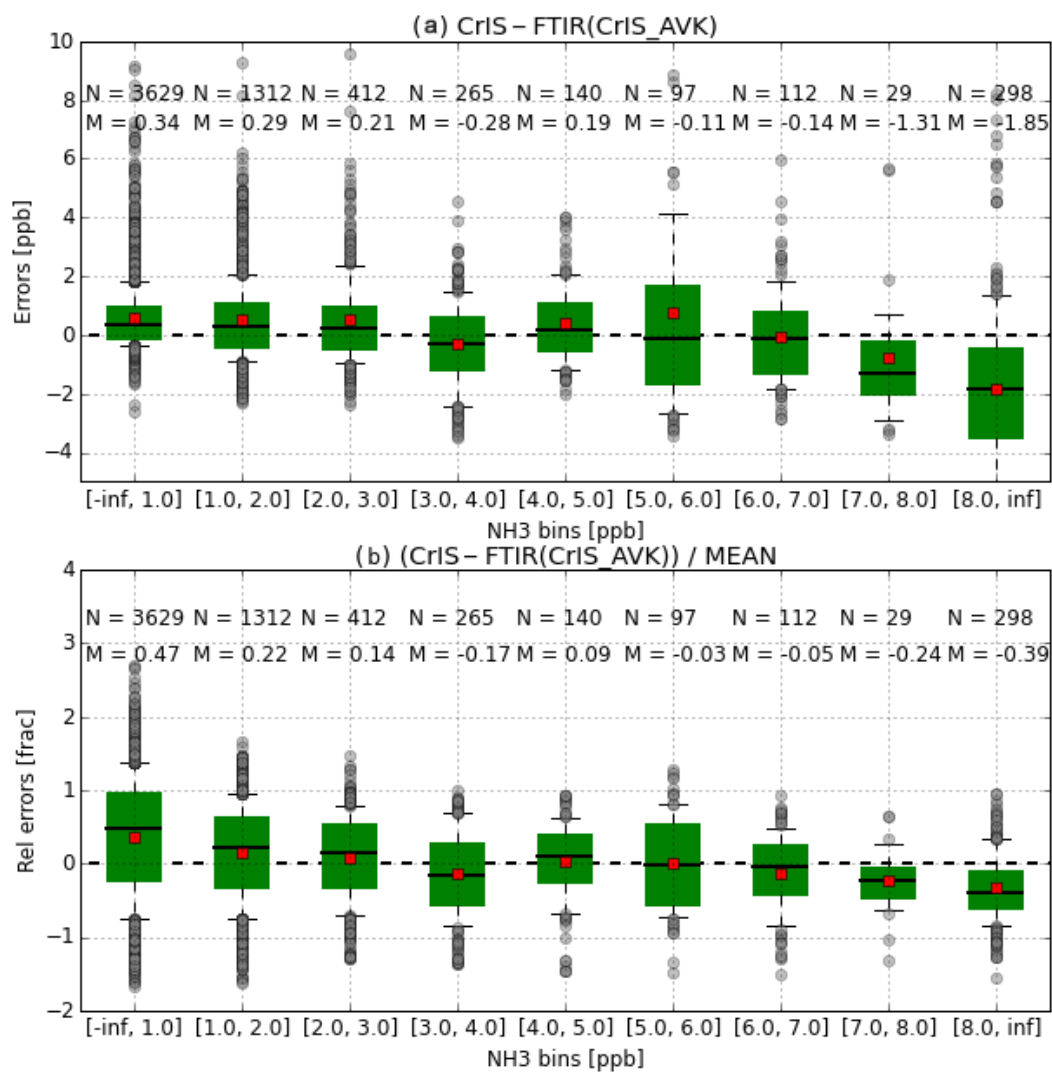
**Figure A3.** Relative error profiles for each of the error terms. Panels (a, c) show the random errors, (b, d) the systematic errors. Panels (a)–(d) show the error in a fraction of the original unit used in Fig. A2. See Fig. A2 for the same figure but with the absolute errors.



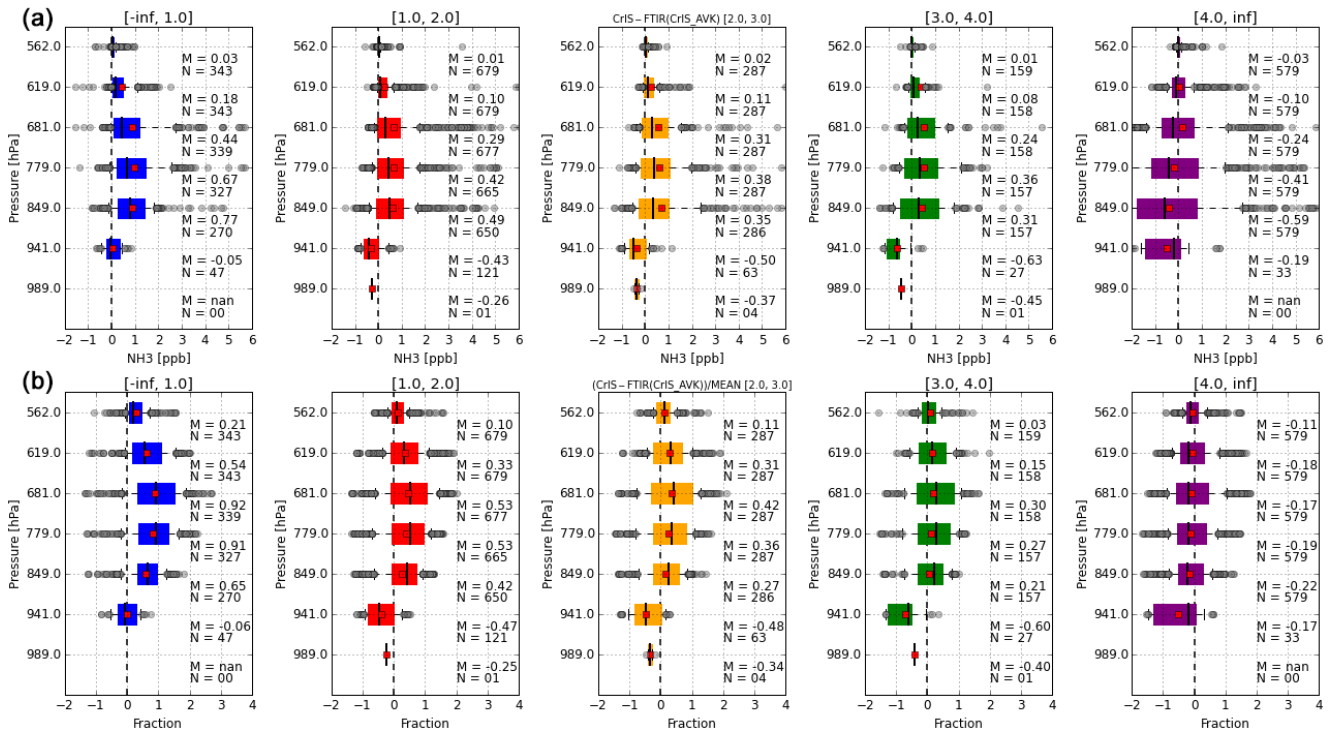
**Figure A4.** CrIS-NH<sub>3</sub> relative and absolute error profile. Panel (a) shows the retrieved and a priori profiles similar to the profiles shown in Fig. 5c. Panel (b) shows the measurement error on the CrIS-retrieved profile, with the blue line the absolute value and red line the value relative to the retrieved profile.



**Figure A5.** Profile comparison for all stations combined. Observations are combined following pressure “bins”, i.e. the midpoints of the CrIS pressure grid. Panel (a) shows the absolute difference [VMR] between profiles (f) and (a). Panel (b) shows the relative difference [Fraction] between the profiles in Fig. 6e and b. Each of the boxes edges are the 25th and 75th percentiles, the black lines in each box is the median, the red square is the mean, the whiskers are the 10th and 90th percentiles, and the grey circles are the outlier values outside the whiskers.



**Figure A6.** Summary of the absolute and relative actual error as a function of the VMR of NH<sub>3</sub> in the individual FTIR layers. The box edges are the 25th and 75th percentiles, the black line in the box is the median, the red square is the mean, the whiskers are the 10th and 90th percentiles, and the grey circles are the outlier values outside the whiskers. Only observations with a pressure greater than 650 hPa are used. Panel (a) shows the absolute difference for each VMR bin, (b) shows the relative difference for each VMR bin.



**Figure A7.** Summary of actual errors as a function of VMR. The maximum VMR of each FTIR profiles is used for the classification. Absolute (a) and relative profile differences (b) following the FTIR (CrIS AVK applied) and CrIS profiles. Observations are following pressure layers, i.e. the midpoints of the CrIS pressure grid. The box edges are the 25th and 75th percentiles, the black line in the box is the median, the red square is the mean, the whiskers are the 10th and 90th percentiles, and the grey circles are the outlier values outside the whiskers.

*Competing interests.* The authors declare that they have no conflict of interest.

*Acknowledgements.* This work is part of the research programme GO/12-36, which is financed by the Netherlands Organisation for Scientific Research (NWO). This work was also funded at AER through a NASA-funded contract (NNH15CM65C). We would like to acknowledge the University of Wisconsin-Madison Space Science and Engineering Center Atmosphere SIPS team sponsored under NASA contract NNG15HZ38C for providing us with the CrIS level 1 and 2 input data, in particular Liam Gumley. We would also like to thank Andre Wehe (AER) for developing the CrIS download and extraction software. The IASI-LUT and IASI-NN were obtained from the atmospheric spectroscopy group at ULB (Spectroscopie de l'Atmosphère, Service de Chimie Quantique et Photophysique, Université Libre de Bruxelles, Brussels, Belgium) and we would like to thank Simon Whitburn, Martin Van Damme, Lieven Clarisse and Pierre Francois Coheur for their help and contributions. Part of this work was performed at the Jet Propulsion Laboratory, California Institute of Technology, under a contract with NASA. The University of Toronto FTIR retrievals were supported by the CAFTON project, funded by the Canadian Space Agency's FAST programme. Measurements were made at the University of Toronto Atmospheric Observatory (TAO), which has been supported by CFCAS, ABB Bomem, CFI, CSA, EC, NSERC, ORDCF, PREA, and the University of Toronto. Funding support in Mexico City was provided by UNAM-DGAPA grants IN107417 and IN112216. A. Bezanilla and B. Herrera participated in the FTIR measurements and M. A. Robles, W. Gutiérrez and M. García are thanked for technical support. We would also like to thank Roy Wichink Kruit and Margreet van Marle for the numerous discussions and valuable input on the subject.

Edited by: Frank Hase

Reviewed by: two anonymous referees

## References

- Adams, P. J., Seinfeld, J. H., Koch, D., Mickley, L., and Jacob, D.: General circulation model assessment of direct radiative forcing by the sulfate-nitrate-ammonium-water inorganic aerosol system, *J. Geophys. Res.-Atmos.*, 106, 1097–1111, 2001.
- Alvarado, M. J., Payne, V. H., Mlawer, E. J., Uymin, G., Shephard, M. W., Cady-Pereira, K. E., Delamere, J. S., and Moncet, J.-L.: Performance of the Line-By-Line Radiative Transfer Model (LBLRTM) for temperature, water vapor, and trace gas retrievals: recent updates evaluated with IASI case studies, *Atmos. Chem. Phys.*, 13, 6687–6711, <https://doi.org/10.5194/acp-13-6687-2013>, 2013.
- Beer, R., Shephard, M. W., Kulawik, S. S., Clough, S. A., Eldering, A., Bowman, K. W., Sander, S. P., Fisher, B. M., Payne, V. H., Luo, M., Osterman, G. B., and Worden, J. R.: First satellite observations of lower tropospheric ammonia and methanol, *Geophys. Res. Lett.*, 35, 1–5, <https://doi.org/10.1029/2008GL033642>, 2008.
- Bevington, P. R. and Robinson D. K.: *Data Reduction and Error Analysis for the Physical Sciences*, 2nd Edn., McGraw-Hill, New York, 104 pp. and 108–109, 1992.
- Bezanilla, A., Krueger, A., Stremme, W. and Grutter, M.: Solar absorption infrared spectroscopic measurements over Mexico City: Methane enhancements, *Atmósfera*, 27, 173–183, 2014.
- Bobbink, R., Hicks, K., Galloway, J., Spranger, T., Alkemade, R., Ashmore, M., Bustamante, M., Cinderby, S., Davidson, E., Dentener, F., Emmett, B., Erisman, J. W., Fenn, M., Gilliam, F., Nordin, A., Pardo, L., and De Vries, W.: Global assessment of nitrogen deposition effects on terrestrial plant diversity: a synthesis, *Ecol. Appl.*, 20, 30–59, 2010.
- Brown, L. R., Gunson, M. R., Toth, R. A., Irion, F. W., Rinsland, C. P., and Goldman, A.: atmospheric trace molecule spectroscopy (ATMOS) linelist, *Appl. Optics*, 35, 2828–2848, 1995.
- Calisesi, Y., Soebijanta, V. T., and van Oss, R.: Re-gridding of remote soundings: Formulation and application to ozone profile comparison, *J. Geophys. Res.*, 110, D23306, <https://doi.org/10.1029/2005JD006122>, 2005.
- Chang, L., Palo, S., Hagan, M., Richter, J., Garcia, R., Riggan, D., and Fritts, D.: Structure of the migrating diurnal tide in the Whole Atmosphere Community Climate Model (WACCM), *Adv. Space Res.*, 41, 1398–1407, <https://doi.org/10.1016/j.asr.2007.03.035>, 2008.
- Clarisse, L., Clerbaux, C., Dentener, F., Hurtmans, D., and Coheur, P.-F.: Global ammonia distribution derived from infrared satellite observations, *Nat. Geosci.*, 2, 479–483, 2009.
- Clarisse, L., Shephard, M. W., Dentener, F., Hurtmans, D., Cady-Pereira, K., Karagulian, F., Van Damme, M., Clerbaux, C., and Coheur, P.-F.: Satellite monitoring of ammonia: A case study of the San Joaquin Valley, *J. Geophys. Res.*, 115, 1–15, <https://doi.org/10.1029/2009JD013291>, 2010.
- Clough, S. A., Shephard, M. W., Mlawer, E. J., Delamere, J. S., Iacono, M. J., Cady-Pereira, K., Boukabara, S., and Brown, P. D.: Atmospheric radiative transfer modeling: a summary of the AER codes, *J. Quant. Spectrosc. Ra.*, 91, 233–244, 2005.
- Coheur, P.-F., Clarisse, L., Turquety, S., Hurtmans, D., and Clerbaux, C.: IASI measurements of reactive trace species in biomass burning plumes, *Atmos. Chem. Phys.*, 9, 5655–5667, <https://doi.org/10.5194/acp-9-5655-2009>, 2009.
- Dammers, E., Vigouroux, C., Palm, M., Mahieu, E., Warneke, T., Smale, D., Langerock, B., Franco, B., Van Damme, M., Schaap, M., Notholt, J., and Erisman, J. W.: Retrieval of ammonia from ground-based FTIR solar spectra, *Atmos. Chem. Phys.*, 15, 12789–12803, <https://doi.org/10.5194/acp-15-12789-2015>, 2015.
- Dammers, E., Palm, M., Van Damme, M., Vigouroux, C., Smale, D., Conway, S., Toon, G. C., Jones, N., Nussbaumer, E., Warneke, T., Petri, C., Clarisse, L., Clerbaux, C., Hermans, C., Lutsch, E., Strong, K., Hannigan, J. W., Nakajima, H., Morino, I., Herrera, B., Stremme, W., Grutter, M., Schaap, M., Wichink Kruit, R. J., Notholt, J., Coheur, P.-F., and Erisman, J. W.: An evaluation of IASI-NH<sub>3</sub> with ground-based Fourier transform infrared spectroscopy measurements, *Atmos. Chem. Phys.*, 16, 10351–10368, <https://doi.org/10.5194/acp-16-10351-2016>, 2016a.
- Dammers, E., Palm, M., Van Damme, M., Shephard, M., Cady-Pereira, K., Capps, S., Clarisse, L., Coheur, P., and Erisman, J. W.: Validation of NH<sub>3</sub> satellite observations by ground-based

- FTIR measurements, EGU General Assembly Conference Abstracts, 18, 1657, 2016b.
- Dentener, F., Drevet, J., Lamarque, J. F., Bey, I., Eickhout, B., Fiore, A. M., Hauglustaine, D., Horowitz, L. W., Krol, M., Kulshrestha, U. C., Lawrence, M., Galy-Lacaux, C., Rast, S., Shindell, D., Stevenson, D., Van Noije, T., Atherton, C., Bell, N., Bergman, D., Butler, T., Cofala, J., Collins, B., Doherty, R., Ellingsen, K., Galloway, J., Gauss, M., Montanaro, V., Müller, J. F., Pitari, G., Rodriguez, J., Sandersson, M., Solmon, F., Strahan, S., Schultz, M., Sudo, K., Szopa, S., and Wild, O.: Nitrogen and sulfur deposition on regional and global scales: A multimodel evaluation, *Global Biogeochem. Cy.*, 20, GB4003, <https://doi.org/10.1029/2005GB002672>, 2006.
- Erisman, J. W., Bleeker, A., Galloway, J., and Sutton, M. S.: Reduced nitrogen in ecology and the environment, *Environ. Pollut.*, 150, 140–149, <https://doi.org/10.1016/j.envpol.2007.06.033>, 2007.
- Erisman, J. W., Sutton, M. A., Galloway, J., Klimont, Z., and Winiwarter, W.: How a century of ammonia synthesis changed the world, *Nat. Geosci.*, 1, 636–639, 2008.
- Erisman, J. W., Galloway, J., Seitzinger, S., Bleeker, A., and Butterbach-Bahl, K.: Reactive nitrogen in the environment and its effect on climate change, *Curr. Opin. Environ. Sustain.*, 3, 281–290, <https://doi.org/10.1016/j.cosust.2011.08.012>, 2011.
- Farr, T. G., Rosen, P. A., Caro, E., and Crippen, R.: The Shuttle Radar Topography Mission, *Rev. Geophys.*, 2005, 1–33, <https://doi.org/10.1029/2005RG000183>, 2007.
- Fowler, D., Coyle, M., Skiba, U., Sutton, M. A., Cape, J. N., Reis, S., Sheppard, L. J., Jenkins, A., Grizzetti, B., Galloway, J. N., Vitousek, P., Leach, A., Bouwman, A. F., Butterbach-Bahl, K., Dentener, F., Stevenson, D., Amann, M., and Voss, M.: The global nitrogen cycle in the twenty-first century, *Philos. T. Roy. Soc. Lond. B*, 368, 1621, <https://doi.org/10.1098/rstb.2013.0164>, 2013.
- Hase, F., Hannigan, J. W., Coffey, M. T., Goldman, A., Höpfner, M., Jones, N. B., Rinsland, C. P., and Wood, S. W.: Intercomparison of retrieval codes used for the analysis of high-resolution, ground-based FTIR measurements, *J. Quant. Spectrosc. Ra.*, 87, 25–52, <https://doi.org/10.1016/j.jqsrt.2003.12.008>, 2004.
- Hase, F., Demoulin, P., Sauval, A. J., Toon, G. C., Bernath, P. F., Goldman, A., Hannigan, J. W., and Rinsland, C. P.: An empirical line-by-line model for the infrared solar transmittance spectrum from 700 to 5000 cm<sup>-1</sup>, *J. Quant. Spectrosc. Ra.*, 102, 450–463, <https://doi.org/10.1016/j.jqsrt.2006.02.026>, 2006.
- Heald, C. L., Collett Jr., J. L., Lee, T., Benedict, K. B., Schwandner, F. M., Li, Y., Clarisse, L., Hurtmans, D. R., Van Damme, M., Clerbaux, C., Coheur, P.-F., Philip, S., Martin, R. V., and Pye, H. O. T.: Atmospheric ammonia and particulate inorganic nitrogen over the United States, *Atmos. Chem. Phys.*, 12, 10295–10312, <https://doi.org/10.5194/acp-12-10295-2012>, 2012.
- Holland, E. A., Dentener, F. J., Braswell, B. H., and Sulzmann, J. M.: Contemporary and pre-industrial global reactive nitrogen budgets, *Biogeochemistry*, 46, 7–43, <https://doi.org/10.1007/BF01007572>, 1999.
- Leen, J. B., Yu, X. Y., Gupta, M., Baer, D. S., Hubbe, J. M., Kluzek, C. D., Tomlinson, J. M., and Hubbell, M. R.: Fast in situ airborne measurement of ammonia using a mid-infrared off-axis ICOS spectrometer, *Environ. Sci. Technol.*, 47, 10446–10453, <https://doi.org/10.1021/es401134u>, 2013.
- Lonsdale, C. R., Hegarty, J. D., Cady-Pereira, K. E., Alvarado, M. J., Henze, D. K., Turner, M. D., Capps, S. L., Nowak, J. B., Neuman, J. A., Middlebrook, A. M., Bahreini, R., Murphy, J. G., Markovic, M. Z., VandenBoer, T. C., Russell, L. M., and Scarino, A. J.: Modeling the diurnal variability of agricultural ammonia in Bakersfield, California, during the CalNex campaign, *Atmos. Chem. Phys.*, 17, 2721–2739, <https://doi.org/10.5194/acp-17-2721-2017>, 2017.
- Lutsch, E., Dammers, E., Conway, S., and Strong, K.: Long-range transport of NH<sub>3</sub>, CO, HCN, and C<sub>2</sub>H<sub>6</sub> from the 2014 Canadian Wildfires, *Geophys. Res. Lett.*, 43, 8286–8297, <https://doi.org/10.1002/2016GL070114>, 2016.
- Miller, D. J., Sun, K., Tao, L., Khan, M. A., and Zondlo, M. A.: Open-path, quantum cascade-laser-based sensor for high-resolution atmospheric ammonia measurements, *Atmos. Meas. Tech.*, 7, 81–93, <https://doi.org/10.5194/amt-7-81-2014>, 2014.
- Moncet, J.-L., Liu, X., Snell, H., Eluszkiewicz, J., He, Y., Kennelly, T., Lynch, R., Boukabara, S., Lipton, A., Rieu-Isaacs, H., Uymin, G., and Zaccheo, S.: Algorithm Theoretical Basis Document for the Cross-track Infrared Sounder Environmental Data Records, AER Document No. P1187-TR-I-08, Version 4.2, available at: [http://www.star.nesdis.noaa.gov/jpsr/documents/ATBD/D0001-M01-S01-007\\_JPSS\\_ATBD\\_CrIMSS\\_B.pdf](http://www.star.nesdis.noaa.gov/jpsr/documents/ATBD/D0001-M01-S01-007_JPSS_ATBD_CrIMSS_B.pdf) (last access: 24 October 2015), 2005.
- Moncet, J.-L., Uymin, G., Lipton, A. E., and Snell, H. E.: Infrared radiance modeling by optimal spectral sampling, *J. Atmos. Sci.*, 65, 3917–3934, 2008.
- Morgenstern, O., Zeng, G., Wood, S. W., Robinson, J., Smale, D., Paton-Walsh, C., Jones, N. B., and Griffith, D. W. T.: Long-range correlations in Fourier transform infrared, satellite, and modeled CO in the Southern Hemisphere, *J. Geophys. Res.*, 117, D11301, <https://doi.org/10.1029/2012JD017639>, 2012.
- Myhre, G., Shindell, D., Bréon, F.-M., Collins, W., Fuglestedt, J., Huang, J., Koch, D., Lamarque, J.-F., Lee, D., Mendoza, B., Nakajima, T., Robock, A., Stephens, G., Takemura, T., and Zhang, H.: Anthropogenic and Natural Radiative Forcing, in: *Climate Change 2013: The Physical Science Basis, Contribution of Working Group I to the Fifth Assessment Report of the Intergovernmental Panel on Climate Change*, edited by: Stocker, T. F., Qin, D., Plattner, G.-K., Tignor, M., Allen, S. K., Boschung, J., Nauels, A., Xia, Y., Bex, V., and Midgley, P. M., Cambridge University Press, Cambridge, UK and New York, NY, USA, 2013.
- Nowak, J. B., Neuman, J. A., Kozai, K., Huey, L. G., Tanner, D. J., Holloway, J. S., Ryerson, T. B., Frost, G. J., McKeen, S. A., and Fehsenfeld, F. C.: A chemical ionization mass spectrometry technique for airborne measurements of ammonia, *J. Geophys. Res.-Atmos.*, 112, D10S02, <https://doi.org/10.1029/2006JD007589>, 2007.
- Nowak, J. B., Neuman, J. A., Bahreini, R., Brock, C. A., Middlebrook, A. M., Wollny, A. G., Holloway, J. S., Peischl, J., Ryerson, T. B., and Fehsenfeld, F. C.: Airborne observations of ammonia and ammonium nitrate formation over Houston, Texas, *J. Geophys. Res.-Atmos.*, 115, D22304, <https://doi.org/10.1029/2010JD014195>, 2010.
- Nowak, J. B., Neuman, J. A., Bahreini, R., Middlebrook, A. M., Holloway, J. S., McKeen, S. A., Parrish, D. D., Ryerson, T. B., and Trainer, M.: Ammonia sources in the California South Coast Air Basin and their impact on ammo-

- nium nitrate formation, *Geophys. Res. Lett.*, 39, L07804, <https://doi.org/10.1029/2012GL051197>, 2012.
- Oren, R., Ellsworth, D. S., Johnsen, K. H., Phillips, N., Ewers, B. E., Maier, C., Schäfer, K. V., McCarthy, H., Hendrey, G., McNulty, S. G., and Katul, G. G.: Soil fertility limits carbon sequestration by forest ecosystems in a CO<sub>2</sub>-enriched atmosphere, *Nature*, 411, 469–472, 2001.
- Pope III, C. A., Burnett, R. T., Thun, M. J., Calle, E. E., Krewski, D., Ito, K., and Thurston, G. D.: Lung cancer, cardiopulmonary mortality, and long-term exposure to fine particulate air pollution, *JAMA*, 287, 1132–1141, <https://doi.org/10.1001/jama.287.9.1132>, 2002.
- Pope III, C. A., Ezzati, M., and Dockery, D. W.: Fine-Particulate Air Pollution and Life Expectancy in the United States, *N. Engl. J. Med.*, 360, 376–386, <https://doi.org/10.1056/NEJMsa0805646>, 2009.
- Pougatchev, N. S., Connor, B. J., and Rinsland, C. P.: Infrared measurements of the ozone vertical distribution above Kitt Peak, *J. Geophys. Res.-Atmos.*, 100, 16689–16697, 1995.
- Puchalski, M. A., Sather, M. E., Walker, J. T., Lehmann, C. M., Gay, D. A., Mathew, J., and Robarge, W. P.: Passive ammonia monitoring in the United States: Comparing three different sampling devices, *J. Environ. Monit.*, 13, 3156–3167, <https://doi.org/10.1039/c1em10553a>, 2011.
- Reis, S., Pinder, R. W., Zhang, M., Lijie, G., and Sutton, M. A.: Reactive nitrogen in atmospheric emission inventories, *Atmos. Chem. Phys.*, 9, 7657–7677, <https://doi.org/10.5194/acp-9-7657-2009>, 2009.
- Rockström, J., Steffen, W., Noone, K., Persson, A., Chapin, F. S., Lambin, E. F., Lenton, T. M., Scheffer, M., Folke, C., Schellnhuber, H. J., Nykvist, B., de Wit, C. A., Hughes, T., van der Leeuw, S., Rodhe, H., Sorlin, S., Snyder, P. K., Costanza, R., Svedin, U., Falkenmark, M., Karlberg, L., Corell, R. W., Fabry, V. J., Hansen, J., Walker, B., Liverman, D., Richardson, K., Crutzen, P., and Foley, J. A.: A safe operating space for humanity, *Nature*, 461, 472–475, <https://doi.org/10.1038/461472a>, 2009.
- Rodgers, C. D.: *Inverse methods for atmospheric Sounding: Theory and Practice*, World Sci., Hackensack, NJ, 2000.
- Rodgers, C. D. and Connor, B. J.: Intercomparison of remote sounding instruments, *J. Geophys. Res.-Atmos.*, 108, 4116, <https://doi.org/10.1029/2002JD002299>, 2003.
- Rodhe, H., Dentener, F., and Schulz, M.: The global distribution of acidifying wet deposition, *Environ. Sci. Technol.*, 36, 4382–4388, 2002.
- Rothman, L. S., Gordon, I. E., Babikov, Y., Barbe, A., Chris Benner, D., Bernath, P. F., Birk, M., Bizzocchi, L., Boudon, V., Brown, L. R., Campargue, A., Chance, K., Cohen, E. A., Coudert, L. H., Devi, V. M., Drouin, B. J., Fayt, A., Flaud, J. M., Gamache, R. R., Harrison, J. J., Hartmann, J. M., Hill, C., Hodges, J. T., Jacquemart, D., Jolly, A., Lamouroux, J., Le Roy, R. J., Li, G., Long, D. A., Lyulin, O. M., Mackie, C. J., Massie, S. T., Mikhailenko, S., Müller, H. S. P., Naumenko, O. V., Nikitin, A. V., Orphal, J., Perevalov, V., Perrin, A., Polovtseva, E. R., Richard, C., Smith, M. A. H., Starikova, E., Sung, K., Tashkun, S., Tennyson, J., Toon, G. C., Tyuterev, V. G., and Wagner, G.: The HITRAN2012 molecular spectroscopic database, *J. Quant. Spectrosc. Ra.*, 130, 4–50, <https://doi.org/10.1016/j.jqsrt.2013.07.002>, 2013.
- Schaap, M., van Loon, M., ten Brink, H. M., Dentener, F. J., and Builtjes, P. J. H.: Secondary inorganic aerosol simulations for Europe with special attention to nitrate, *Atmos. Chem. Phys.*, 4, 857–874, <https://doi.org/10.5194/acp-4-857-2004>, 2004.
- Schiferl, L. D., Heald, C. L., Nowak, J. B., Holloway, J. S., Neuman, J. A., Bahreini, R., Pollack, I. B., Ryerson, T. B., Wiedinmyer, C., and Murphy, J. G.: An investigation of ammonia and inorganic particulate matter in California during the CalNex campaign, *J. Geophys. Res.-Atmos.*, 119, 1883–1902, <https://doi.org/10.1002/2013JD020765>, 2014.
- Schiferl, L. D., Heald, C. L., Van Damme, M., Clarisse, L., Clerbaux, C., Coheur, P.-F., Nowak, J. B., Neuman, J. A., Herson, S. C., Roscioli, J. R., and Eilerman, S. J.: Interannual variability of ammonia concentrations over the United States: sources and implications, *Atmos. Chem. Phys.*, 16, 12305–12328, <https://doi.org/10.5194/acp-16-12305-2016>, 2016.
- Seinfeld, J. H. and Pandis, S. N.: *Atmospheric Chemistry and Physics*, John Wiley, Hoboken, NJ, 1988.
- Shephard, M. W. and Cady-Pereira, K. E.: Cross-track Infrared Sounder (CrIS) satellite observations of tropospheric ammonia, *Atmos. Meas. Tech.*, 8, 1323–1336, <https://doi.org/10.5194/amt-8-1323-2015>, 2015.
- Shephard, M. W., Clough, S. A., Payne, V. H., Smith, W. L., Kireev, S., and Cady-Pereira, K. E.: Performance of the line-by-line radiative transfer model (LBLRTM) for temperature and species retrievals: IASI case studies from JAIVEx, *Atmos. Chem. Phys.*, 9, 7397–7417, <https://doi.org/10.5194/acp-9-7397-2009>, 2009.
- Shephard, M. W., Cady-Pereira, K. E., Luo, M., Henze, D. K., Pinder, R. W., Walker, J. T., Rinsland, C. P., Bash, J. O., Zhu, L., Payne, V. H., and Clarisse, L.: TES ammonia retrieval strategy and global observations of the spatial and seasonal variability of ammonia, *Atmos. Chem. Phys.*, 11, 10743–10763, <https://doi.org/10.5194/acp-11-10743-2011>, 2011.
- Shephard, M. W., McLinden, C. A., Cady-Pereira, K. E., Luo, M., Moussa, S. G., Leithead, A., Liggio, J., Staebler, R. M., Akingunola, A., Makar, P., Lehr, P., Zhang, J., Henze, D. K., Millet, D. B., Bash, J. O., Zhu, L., Wells, K. C., Capps, S. L., Chaliyakunnel, S., Gordon, M., Hayden, K., Brook, J. R., Wolde, M., and Li, S.-M.: Tropospheric Emission Spectrometer (TES) satellite observations of ammonia, methanol, formic acid, and carbon monoxide over the Canadian oil sands: validation and model evaluation, *Atmos. Meas. Tech.*, 8, 5189–5211, <https://doi.org/10.5194/amt-8-5189-2015>, 2015.
- Sun, K., Cady-Pereira, K., Miller, D. J., Tao, L., Zondlo, M. A., Nowak, J. B., Neuman, J. A., Mikoviny, T., Müller, M., Wisthaler, A., Scarino, A. J., and Hostetler, C. A.: Validation of TES ammonia observations at the single pixel scale in the San Joaquin Valley during DISCOVER-AQ, *J. Geophys. Res.-Atmos.*, 120, 5140–5154, <https://doi.org/10.1002/2014JD022846>, 2015.
- Sutton, M. A., Reis, S., Riddick, S. N., Dragosits, U., Nemitz, E., Theobald, M. R., Tang, Y. S., Braban, C. F., Viena, M., Dore, A. J., Mitchell, R. F., Wanless, S., Daunt, F., Fowler, D., Blackall, T. D., Milford, C., Flechard, C. R., Loubet, B., Massad, R., Cellier, P., Personne, E., Coheur, P. F., Clarisse, L., Van Damme, M., Ngadi, Y., Clerbaux, C., Skjøth, C. A., Geels, C., Hertel, O., Wichink Kruit, R. J., Pinder, R. W., Bash, J. O., Walker, J. T., Simpson, D., Horváth, L., Misselbrook, T. H., Bleeker, A., Dentener, F., and de Vries, W.: Towards a climate-dependent paradigm of ammonia emission

- and deposition, *Philos. T. Roy. Soc. Lond. B*, 368, 20130166, <https://doi.org/10.1098/rstb.2013.0166>, 2013.
- Tobin, D.: Early Checkout of the Cross-track Infrared Sounder (CrIS) on Suomi-NPP, Through the Atmosphere, Summer 2012, available at: <http://www.ssec.wisc.edu/news/media/2012/07/ttasummer20121.pdf> (last access: 30 January 2017), 2012.
- Toon, G. C., Blavier, J.-F., Sen, B., Margitan, J. J., Webster, C. R., Max, R. D., Fahey, D. W., Gao, R., DelNegro, L., Proffitt, M., Elkins, J., Romashkin, P. A., Hurst, D. F., Oltmans, S., Atlas, E., Schauffler, S., Flocke, F., Bui, T. P., Stimpfle, R. M., Bonne, G. P., Voss, P. B., and Cohen, R. C.: Comparison of MkIV balloon and ER-2 aircraft measurements of atmospheric trace gases, *J. Geophys. Res.*, 104, 26779–26790, 1999.
- Van Damme, M., Clarisse, L., Heald, C. L., Hurtmans, D., Ngadi, Y., Clerbaux, C., Dolman, A. J., Erisman, J. W., and Coheur, P. F.: Global distributions, time series and error characterization of atmospheric ammonia (NH<sub>3</sub>) from IASI satellite observations, *Atmos. Chem. Phys.*, 14, 2905–2922, <https://doi.org/10.5194/acp-14-2905-2014>, 2014a.
- Van Damme, M., Wichink-Kruit, R. J., Schaap, M., Clarisse, L., Clerbaux, C., Coheur, P.-F., Dammers, E., Dolman, A. J., and Erisman, J. W.: Evaluating 4 years of atmospheric ammonia (NH<sub>3</sub>) over Europe using IASI satellite observations and LOTOS-EUROS model results, *J. Geophys. Res.-Atmos.*, 119, 9549–9566, <https://doi.org/10.1002/2014JD021911>, 2014b.
- Van Damme, M., Erisman, J. W., Clarisse, L., Dammers, E., Whitburn, S., Clerbaux, C., Dolman, A. J., and Coheur, P.-F.: Worldwide spatiotemporal atmospheric ammonia (NH<sub>3</sub>) columns variability revealed by satellite, *Geophys. Res. Lett.*, 42, 8660–8668, <https://doi.org/10.1002/2015GL065496>, 2015a.
- Van Damme, M., Clarisse, L., Dammers, E., Liu, X., Nowak, J. B., Clerbaux, C., Flechard, C. R., Galy-Lacaux, C., Xu, W., Neuman, J. A., Tang, Y. S., Sutton, M. A., Erisman, J. W., and Coheur, P. F.: Towards validation of ammonia (NH<sub>3</sub>) measurements from the IASI satellite, *Atmos. Meas. Tech.*, 8, 1575–1591, <https://doi.org/10.5194/amt-8-1575-2015>, 2015b.
- Velazco, V., Wood, S. W., Sinnhuber, M., Kramer, I., Jones, N. B., Kasai, Y., Notholt, J., Warneke, T., Blumenstock, T., Hase, F., Murcray, F. J., and Schrems, O.: Annual variation of strato-mesospheric carbon monoxide measured by ground-based Fourier transform infrared spectrometry, *Atmos. Chem. Phys.*, 7, 1305–1312, <https://doi.org/10.5194/acp-7-1305-2007>, 2007.
- von Bobruzki, K., Braban, C. F., Famulari, D., Jones, S. K., Blackall, T., Smith, T. E. L., Blom, M., Coe, H., Gallagher, M., Ghailaieny, M., McGillen, M. R., Percival, C. J., Whitehead, J. D., Ellis, R., Murphy, J., Mohacsi, A., Pogany, A., Junninen, H., Rantanen, S., Sutton, M. A., and Nemitz, E.: Field inter-comparison of eleven atmospheric ammonia measurement techniques, *Atmos. Meas. Tech.*, 3, 91–112, <https://doi.org/10.5194/amt-3-91-2010>, 2010.
- Warner, J. X., Wei, Z., Strow, L. L., Dickerson, R. R., and Nowak, J. B.: The global tropospheric ammonia distribution as seen in the 13-year AIRS measurement record, *Atmos. Chem. Phys.*, 16, 5467–5479, <https://doi.org/10.5194/acp-16-5467-2016>, 2016.
- Whitburn, S., Van Damme, M., Kaiser, J. W., van der Werf, G. R., Turquety, S., Hurtmans, D., Clarisse, L., Clerbaux, C., and Coheur, P.-F.: Ammonia emissions in tropical biomass burning regions: Comparison between satellite-derived emissions and bottom-up fire inventories, *Atmos. Environ.*, 121, 42–54, <https://doi.org/10.1016/j.atmosenv.2015.03.015>, 2015.
- Whitburn, S., Van Damme, M., Clarisse, L., Bauduin, S., Heald, C. L., Hadji-Lazaro, J., Hurtmans, D., Zondlo, M. A., Clerbaux, C., and Coheur, P.-F.: A flexible and robust neural network IASI-NH<sub>3</sub> retrieval algorithm, *J. Geophys. Res.-Atmos.*, 121, 6581–6599, <https://doi.org/10.1002/2016JD024828>, 2016.
- Wiacek, A., Taylor, J. R., Strong, K., Saari, R., Kerzenmacher, T. E., Jones, N. B., and Griffith, D. W. T.: Ground-Based Solar Absorption FTIR Spectroscopy: Characterization of Retrievals and First Results from a Novel Optical Design Instrument at a New NDACC Complementary Station, *J. Atmos. Ocean. Tech.*, 24, 432–448, <https://doi.org/10.1175/JTECH1962.1>, 2007.
- Worden, J., Kulawik, S. S., Shephard, M. W., Clough, S. A., Worden, H., Bowman, K., and Goldman, A.: Predicted errors of tropospheric emission spectrometer nadir retrievals from spectral window selection, *J. Geophys. Res.*, 109, D09308, <https://doi.org/10.1029/2004JD004522>, 2004.
- Zhu, L., Henze, D. K., Cady-Pereira, K. E., Shephard, M. W., Luo, M., Pinder, R. W., Bash, J. O., and Jeong, G. R.: Constraining U.S. ammonia emissions using TES remote sensing observations and the GEOS-Chem adjoint model, *J. Geophys. Res.-Atmos.*, 118, 3355–3368, <https://doi.org/10.1002/jgrd.50166>, 2013.
- Zondlo, M., Pan, D., Golston, L., Sun, K., and Tao, L.: Ammonia emissions, transport, and deposition downwind of agricultural areas at local to regional scales, EGU General Assembly Conference Abstracts, 18, 16552, 2016.