

VU Research Portal

Imaging Alzheimer's disease pathology in vivo

Tolboom, N.

2010

document version

Publisher's PDF, also known as Version of record

[Link to publication in VU Research Portal](#)

citation for published version (APA)

Tolboom, N. (2010). *Imaging Alzheimer's disease pathology in vivo: towards an early diagnosis*.

General rights

Copyright and moral rights for the publications made accessible in the public portal are retained by the authors and/or other copyright owners and it is a condition of accessing publications that users recognise and abide by the legal requirements associated with these rights.

- Users may download and print one copy of any publication from the public portal for the purpose of private study or research.
- You may not further distribute the material or use it for any profit-making activity or commercial gain
- You may freely distribute the URL identifying the publication in the public portal ?

Take down policy

If you believe that this document breaches copyright please contact us providing details, and we will remove access to the work immediately and investigate your claim.

E-mail address:

vuresearchportal.ub@vu.nl

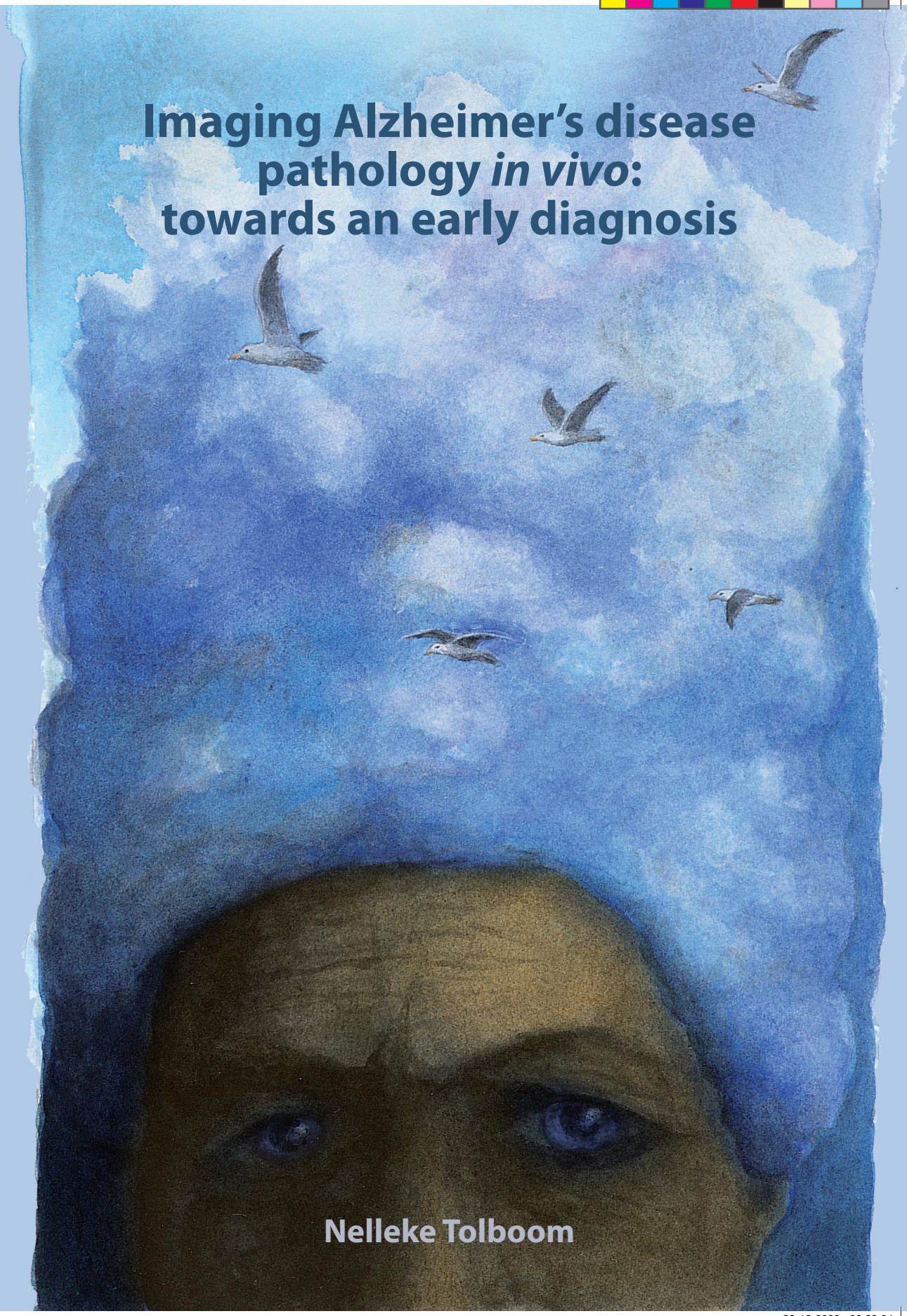


Over the past two decades, positron emission tomography (PET) tracers have been developed for *in vivo* visualisation and quantification of Alzheimer's disease (AD) pathology. Previously, detection of AD pathology was only possible at post mortem examination of the brain or at brain biopsy. The possibility to image the amount and distribution of AD pathology during life has initiated a new research area. It shows promise to facilitate early and accurate diagnosis of AD, provide more insight in the time course and regional deposition of pathology during life and assist in the development of potential treatments. This thesis is dedicated to evaluate and compare the performance of two promising ligands for *in vivo* imaging of AD pathology, [¹¹C]PIB and [¹⁸F]FDDNP.



Imaging Alzheimer's disease pathology *in vivo*: towards an early diagnosis

Nelleke Tolboom



Imaging Alzheimer's disease pathology *in vivo*: towards an early diagnosis

Nelleke Tolboom