

2013

Turbulence and transport suppression scaling with flow shear on the Large Plasma Device

David A. Schaffner

Bryn Mawr College, dschaffner@brynmawr.edu

T. A. Carter

G. D. Rossi

D. S. Guice

J. E. Maggs

See next page for additional authors

[Let us know how access to this document benefits you.](#)

Follow this and additional works at: http://repository.brynmawr.edu/physics_pubs



Part of the [Physics Commons](#)

Custom Citation

D. A. Schaffner, T. A. Carter, G. D. Rossi, D. S. Guice, J. E. Maggs, S. Vincena, and B. Friedman. 2013. Turbulence and transport suppression scaling with flow shear on the Large Plasma Device. *Phys. Plasmas* 20, 055907.

This paper is posted at Scholarship, Research, and Creative Work at Bryn Mawr College. http://repository.brynmawr.edu/physics_pubs/85

For more information, please contact repository@brynmawr.edu.

Authors

David A. Schaffner, T. A. Carter, G. D. Rossi, D. S. Guice, J. E. Maggs, S. Vincena, and B. Friedman

Turbulence and transport suppression scaling with flow shear on the Large Plasma Device^{a)}

D. A. Schaffner,^{b)} T. A. Carter, G. D. Rossi, D. S. Guice, J. E. Maggs, S. Vincena, and B. Friedman

Department of Physics and Astronomy, University of California, Los Angeles, California 90095-1547, USA

(Received 16 December 2012; accepted 20 March 2013; published online 15 May 2013)

Continuous control over azimuthal flow and shear in the edge of the Large Plasma Device (LAPD) [W. Gekelman *et al.*, *Rev. Sci. Instr.* **62**, 2875 (1991)] has been achieved using a biasable limiter. This flow control has allowed a careful study of the effect of flow shear on pressure-gradient-driven turbulence and particle transport in LAPD. The combination of externally controllable shear in a turbulent plasma along with the detailed spatial diagnostic capabilities on LAPD makes the experiment a useful testbed for validation of shear suppression models. Motivated by these models, power-law fits are made to the density and radial velocity fluctuation amplitudes, particle flux, density-potential crossphase, and radial correlation length. The data show a break in the trend of these quantities when the shearing rate ($\gamma_s = \partial V_\theta / \partial r$) is comparable to the turbulent decorrelation rate ($1/\tau_{ac}$). No one model captures the trends in the all turbulent quantities for all values of the shearing rate, but some models successfully match the trend in either the weak ($\gamma_s \tau_{ac} < 1$) or strong ($\gamma_s \tau_{ac} > 1$) shear limits. © 2013 AIP Publishing LLC. [<http://dx.doi.org/10.1063/1.4804637>]

I. INTRODUCTION

Suppression of turbulence and turbulent transport by flow shear has been observed on a multitude of different magnetized plasma experiments.^{1–8} While the importance of cross-field flow shear for the successful high confinement operation of fusion devices is well recognized,^{9,10} we still lack a fully first-principles understanding of how sheared flow regulates turbulence and transport. This understanding is essential in the development of a predictive capability for transport for current and future devices such as ITER. Experimental validation of shear suppression models is a critical part of this development process, providing motivation for experiments in which the response of turbulence to shear flow is carefully documented. External control of flow shear in a magnetized plasma has been previously achieved in a number of toroidal devices using biased electrodes to drive cross-field currents and provide torque to drive plasma rotation.^{11,12} Transport reduction and confinement transitions have been observed in response to biasing and this response has been compared to models for shear suppression, in particular in work performed by the TEXTOR group.^{13–15}

Biasing has been used to induce rotation and cause transitions in particle confinement in the Large Plasma Device (LAPD).^{6,7} Recently, a new data set has been gathered on LAPD in which the flow shear was continuously varied using a biasable limiter.⁸ These experiments demonstrated shear suppression of turbulent transport and provided measurements of a number of turbulent quantities including cross-field particle flux, density and radial $E \times B$ velocity fluctuations, density-velocity crossphase, and radial correlation length. Moreover, the scan included data points in both the

weak and strong shear regime, as defined by the ratio of shearing rate to inverse autocorrelation time. This provides the ability for comparison to models which make separate predictions for each regime.

Models based on radial decorrelation of turbulent structures by sheared flow are prevalent in the theoretical literature^{16–25} and provide a number of predictions concerning the quantitative scaling of turbulent quantities with shear. The basic premise underlying these models is the competition between linear or nonlinear turbulence dynamics and the tendency of sheared flows to “rip apart” or decorrelate turbulent structures; this leads to reduced fluctuation amplitude and decreased radial transport step-size. A large number of theoretical models have been developed which use this underlying principle. Variation in the predictions of these models arise from assumptions: strength of flow shear compared to turbulence timescales (strong vs weak), the underlying instability driving the turbulence (i.e., Ion Temperature Gradient [ITG] or Resistive Pressure Gradient Driven Turbulence [RPGDT]), as well as consideration of passive versus dynamic scalars.

This paper presents experimental fits of density fluctuation amplitude, radial velocity fluctuation amplitude, particle flux, crossphase, diffusivity, and radial correlation length as functions of flow shear and compares them to a number of model predictions. No one model predicts how all the quantities scale with shearing rate though some models do make favorable comparisons for some quantities. The data generally show a stronger decrease in turbulent fluctuations than crossphase as a contributor to reduction of particle flux. Fits to the variation of the experimentally computed diffusion coefficient with shear compare well to numerical simulation predictions.

This paper is organized as follows. A brief review of shear decorrelation models is provided in Section II,

^{a)}Paper T12 2, *Bull. Am. Phys. Soc.* **57**, 291 (2012).

^{b)}Invited speaker.

followed by a discussion of the LAPD experiments in Sec. III. In Sec. IV, the approach for model fitting of the experimental data is discussed and the results of these fits are presented in Sec. V. Finally, a discussion of how these fits compare to analytic and simulation model predictions is given in Sec. VI.

II. MODELS OF SHEAR SUPPRESSION

Two of the earliest models of shear suppression were decorrelation models developed by Biglari, Diamond, and Terry¹⁶ (hereafter BDT) and Shaing.¹⁷ The BDT theory presents a generalized analysis of the transport of a passive scalar in a mean sheared flow in the strong-shear regime with constant turbulent drive (pressure gradient). The BDT model predicts that normalized fluctuation amplitude scales directly with shearing rate, γ_s , to the $-2/3$ power

$$\frac{\langle |\tilde{\xi}|^2 \rangle}{\langle |\tilde{\xi}|^2 \rangle_{\gamma_s=0}} \sim (\gamma_s \tau_{ac})^{-2/3}, \quad (1)$$

where ξ can be any quantity such as density or temperature and the normalization factor, τ_{ac} , is the autocorrelation time of the unshaded turbulence. Conversely, the Shaing model focuses on the weak shear limit and predicts a scaling of the form

$$\frac{\langle |\tilde{\xi}|^2 \rangle}{\langle |\tilde{\xi}|^2 \rangle_{\gamma_s=0}} \sim 1 - \alpha (\gamma_s \tau_{ac})^2, \quad (2)$$

where α is a constant containing mode number information.

Zhang and Mahajan^{18,19} developed a model which included the self-consistent modification of the fluctuation spectrum and the diffusion coefficient by flow shear. This allowed the development of a model for shear suppression of turbulent amplitude which could span both the weak and strong shear regimes

$$\left(\frac{\langle |\tilde{\xi}|^2 \rangle}{\langle |\tilde{\xi}|^2 \rangle_{\gamma_s=0}} \right)^{-1} \sim 1 + \alpha (\gamma_s \tau_{ac})^2. \quad (3)$$

The resulting model shows correspondence to the Shaing model in the weak shear regime while the BDT model can be recovered in the strong shear regime but only for the case where the diffusion coefficient is constant (independent of fluctuation amplitude).

Work by Ware and Terry^{20,21} made predictions for the effect of shear on particle transport specifically in resistive pressure-gradient driven turbulence (RGPDT). Their work predicted a decrease in flux as $\Gamma_p \sim 1 - \gamma_s^2$ in the weak shear limit. Additionally, the model predicted a decrease in the cosine of the crossphase between density and radial velocity fluctuations of the form $1 - \gamma_s^2$. They too incorporated the modification of the pressure gradient, formulating an expression for shear suppression of radial particle diffusivity of the form

$$\frac{D}{D_{\gamma_s=0}} \sim 1 - \beta (\gamma_s)^2, \quad (4)$$

where β is a constant which depends on the linear growth rate and radial mode width.

Further work by Terry, Newman, and Ware²² examined the modification of flux in the strong shear regime for a non-mode-specific turbulent system, predicting a direct scaling of $\Gamma_p \sim \gamma_s^{-4}$ overall. Here fluctuation amplitude reduction contributed one power while crossphase reduction contributed three powers of γ_s , indicating that, in the strong shear limit, crossphase modification is the dominant flux suppression mechanism rather than reduction of the fluctuation amplitude.

Kim and Diamond²³ recast the decorrelation model to include resonance absorption between the shear flow and fluctuations leading to a much weaker dependence of particle flux on shear, $\Gamma_p \sim \gamma_s^{-1}$, and even weaker dependence of the crossphase on shear: $\cos(\theta_{nv_r}) \sim \gamma_s^{-1/6}$. In this model, fluctuations decreased as $|\tilde{n}|^2 \sim \gamma_s^{-5/3}$. Additional work along these lines²⁴ considered a more self-consistent model for the turbulence, treating the fluctuating flows dynamically using interchange drive. This model predicted a decrease in fluctuating radial velocity amplitude as a function of shear which scales as $|\tilde{v}_r|^2 \sim \gamma_s^{-3}$ in the weak shear limit, and as $|\tilde{v}_r|^2 \sim \gamma_s^{-4}$ in the strong-shear limit.

Finally, work by Newton and Kim has utilized numerical simulations using a generic turbulence model²⁵ with a finite correlation time, $\tau_{ac} \geq \gamma_s^{-1}$. Their work produced scalings of $D \sim \gamma_s^{-1.75}$, $|\tilde{n}|^2 \sim \gamma_s^{-2.41}$, and $\cos(\theta_{nv_r}) \sim \gamma_s^{-0.22}$ which correspond to the strong shear regime for this dataset.

III. SHEAR SUPPRESSION EXPERIMENTS

The Large Plasma Device (LAPD) is a 17 m long, ~ 60 cm diameter cylindrical plasma produced by a barium-oxide coated nickel cathode.²⁶ In the experiments reported here, a plasma of density $\sim 2 \times 10^{12} \text{ cm}^{-3}$ and peak temperature of 8 eV are produced in a uniform solenoidal magnetic field of 1000 G. All measurements reported here were collected using Langmuir probes recording floating potential, V_f , or ion saturation current, I_{sat} . Azimuthal electric field fluctuations, \tilde{E}_θ , are found by taking the simultaneous difference in two V_f signals separated a small azimuthal distance apart. Turbulent particle flux $\Gamma \propto \langle \tilde{n}_e \tilde{E}_\theta \rangle$ is determined through correlating density fluctuations with \tilde{E}_θ , where it is assumed that E_θ produces radial $E \times B$ flow. The relative crossphase between fluctuation time-series is determined through the cross-spectrum of the quantities. That is,

$$\theta = \tan^{-1} \frac{\langle Q(f, r) \rangle_{f,r}}{\langle C(f, r) \rangle_{f,r}}, \quad (5)$$

where Q and C are the imaginary and real parts of the cross-spectrum, calculated from the product of the complex FFTs of the two time-series in question as in

$$G(f, r) = \hat{x}^*(f, r) \hat{y}(f, r). \quad (6)$$

The cross-spectrum is first averaged over frequencies to power-weight the crossphase signal, and then averaged radially, before the phase is determined using Eq. (5). Finally,

steady-state azimuthal flow, V_θ , is determined through the radial derivative of plasma potential profiles measured using a swept-Langmuir probe technique again assuming only $E \times B$ flow. The shearing rate in a cylinder has been defined by many authors^{16,27} as

$$\gamma_s = r \frac{\partial V_\theta}{\partial r} = \frac{\partial V_\theta}{\partial r} - \frac{V_\theta}{r}. \quad (7)$$

This definition results in zero shearing rate for rigid body rotation in a cylinder. In these experiments, the flow profiles are far from rigid body and measurements are performed at large radius ($r \sim 30$ cm). Therefore the V_θ/r term is very small and a local definition of shearing rate is reasonable and has been used in other experimental work.^{4,6,14,15} Therefore, the shearing rate definition adopted for the data presented here is computed as $\gamma_s = \partial V_\theta / \partial r$.

The shearing rate is normalized using the autocorrelation time of the turbulence τ_{ac} . This is determined by finding the width of the autocorrelation function of the density time series at zero shearing rate. Spectral calculations (FFT) are performed using a time window of 3.2 ms (the flat-top of the bias-driven flow phase). The plasma potential is determined from Langmuir probe sweeps 2.5 ms long during the flat-top period.

A large annular aluminum limiter was installed in LAPD to provide a parallel boundary condition for the edge plasma and is biased relative to the cathode of the plasma source to control plasma potential and cross-field flow. A diagram of the limiter arrangement and biasing circuit is shown in Fig. 1(a).

A recent experiment on the LAPD demonstrated the ability to achieve continuous control of steady-state azimuthal flow and flow shear through the use of these biasable limiters.⁸ Spontaneous rotation is observed in LAPD in the ion diamagnetic drift direction (IDD). This spontaneous flow can be reduced and reversed into the electron diamagnetic drift direction (EDD) as the limiter bias is increased. This results in a continuous variation of edge flow and flow shear including zero flow and flow shear states. Shearing rates are achieved up to about five times the turbulent inverse autocorrelation time or decorrelation time (τ_{ac}^{-1}) as measured in the state with minimum shearing rate. Radial particle flux and fluctuation amplitude are reduced as shearing rate is increased and the resulting transport changes cause observable steepening of the density gradient.

Examples of time series of density and radial velocity measurements for the minimum flow shear state and a high flow shear state are shown in Figure 2 specifically for $r = 29$ cm, in the middle of the shear layer. Comparison of the curves shows a decrease in fluctuations throughout the entire time averaging region. Profiles made from these time-averaged quantities are shown in Figure 3 for density fluctuations, radial velocity fluctuations, particle flux, and shearing rate. A minimum shearing rate, intermediate shearing rate, and high shearing rate state are shown and with suppression of these measurements clearly visible especially within the spatial averaging region indicated by the grey dashed lines (27 cm to 31 cm). The averaging region was chosen to avoid

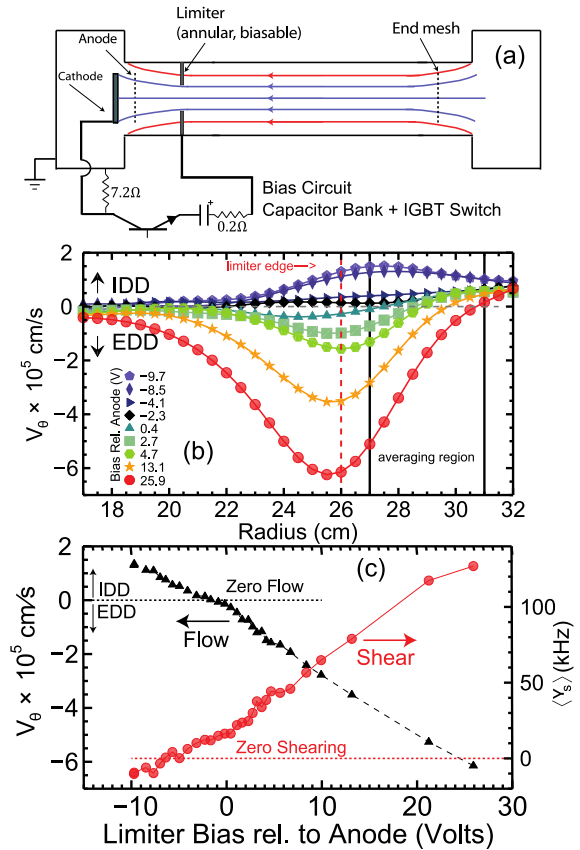


FIG. 1. (a) Diagram of the LAPD device showing relative location of the annular limiter and basic biasing setup. (b) Velocity profiles using plasma potential from swept measurements. (c) Flow at the limiter edge (black, triangles) and mean shearing rate, averaged over $27 < r < 31$ cm (red, circles).

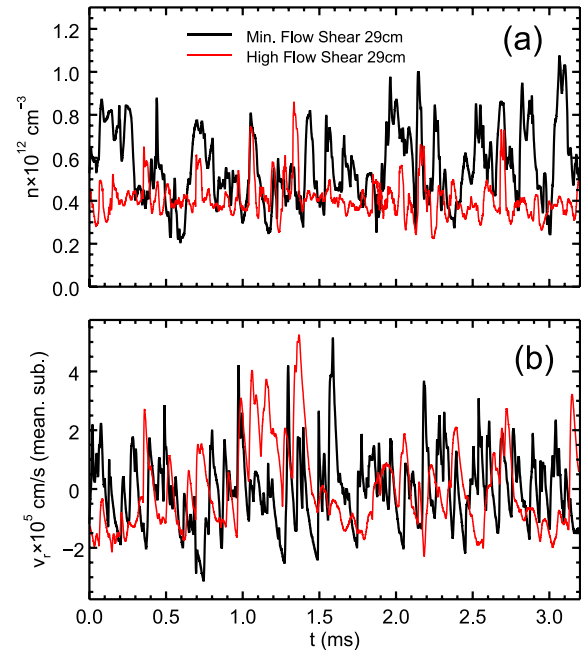


FIG. 2. (a) Single shot (not averaged) time series of density fluctuations from a Langmuir probe at 29 cm. The black curve shows the trace for the minimum shearing rate state while the red is for a high flow shear state. The 3.2 ms shown is the temporal averaging region. (b) Time series for radial velocity fluctuations (mean subtracted) taken using two vertically spaced floating potential probe tips also at 29 cm.

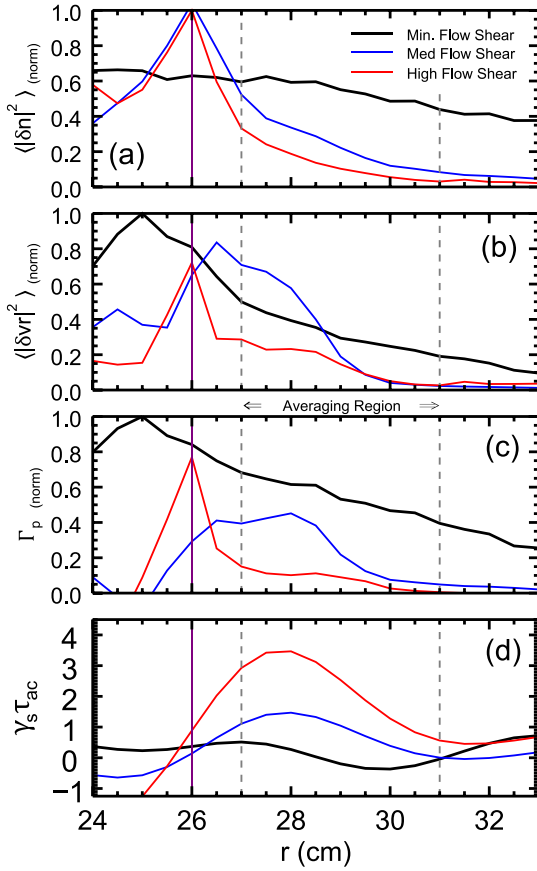


FIG. 3. Shot-averaged profiles of (a) density fluctuations, (b) radial velocity fluctuations, (c) particle flux, and (d) shearing rate normalized to τ_{ac} . The limiter edge is indicated by the purple dotted line at 26 cm. The spatial averaging region is indicated by the dashed lines between 27 and 31 cm. The three curves for each of the first three plots show the suppression of the quantity with increase shearing rate inside the spatial averaging region. The averaging region avoids direct influence from the coherent mode localized at the limiter edge.

the effect of the limiter-edge-localized coherent mode as much as possible, but the mode does influence the spatial averaging region somewhat at the highest flow states.

Figure 4 shows the experimental results for measurements of spatially averaged density fluctuation amplitude, radial velocity fluctuation amplitude, and density-radial velocity crossphase as functions of normalized shearing rates. All data presented are averaged over the radial range $27 < r < 31$ cm as indicated in Figures 1 and 3. The shearing rates achieved span two regimes: a weak-shear regime where $\gamma_s \tau_{ac} < 1$ and a strong-shear regime where $\gamma_s \tau_{ac} > 1$. The blue solid lines correspond to the best fits for the strong-shear cases while the green are the best fits for the weak-shear case. Similar plots for particle flux and diffusivity $D = \Gamma / |\nabla n|$ are shown in Figure 5. Error bars of $\pm 20\%$ for each quantity are shown on the plots and used in the fits, reflecting a statistical error from the number of shots used to average the quantity ($\sigma \sim 1/\sqrt{N_{\text{shots}}}$).

Measurements of the radial correlation length were recorded as a function of shearing rate (applied bias) using a two-probe correlation technique. A reference probe collecting I_{sat} is kept stationary at a particular axial and radial location within LAPD. A second Langmuir probe situated at an

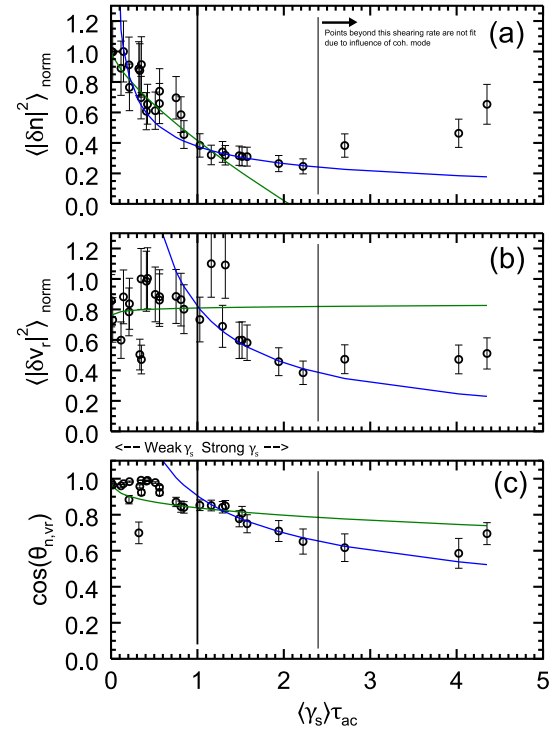


FIG. 4. Scaling of (a) density fluctuation amplitude, (b) radial velocity fluctuation amplitude, and (c) density-radial velocity crossphase. Density and velocity fluctuations are each normalized to the value measured at minimum shear. The green curves correspond to $1 - \gamma_s^{\nu}$ fits of the weak shear regime for density fluctuations and crossphase, while radial velocity fluctuations are fit to γ_s^{ν} in the weak shear regime. The blue curves all correspond to γ_s^{ν} fits for each of the three plots. The last three points in each plot are not included in the fits due to potential influence of the coherent mode at high shearing rate.

axial point closer to the cathode is moved shot-to-shot in a rectangular grid around the radial location of the reference probe. The cross-field cross-correlation function of these two measurements is computed shot-to-shot for a delay time τ as $C(x, y, \tau) = \langle I_{\text{ref}}(x, y, t) I_{\text{mot}}(x, y, t + \tau) \rangle$.

Figure 6(a) shows the normalized correlation function $C(x, y)/C_{\text{max}}$ for the unbiased state (flow in the IDD), a minimum shear state, and a high bias state (large EDD flow) with a reference probe located at $x = 29.5$ cm, $y = 0$ cm (right in the middle of the shear layer). The black curve represents the contour line where $C(x, y)/C_{\text{max}} = 0.5$. The radial correlation length Δr_c is defined here as the radial width of this black curve through the reference probe location. The variation of the correlation length versus shearing rate is shown in Figure 6 (normalized to the maximum radial correlation length calculated for all biases, $r_{\text{max}} = 5.5$ cm). The correlation length is found to decrease substantially with shear. A break in the trend of decreasing correlation length is observed for larger shearing rates where the correlation function appears to be dominated by a coherent mode (which also appears in the temporal power spectrum).

Some achieved parameter regimes for the shearing rate and density gradient length scales are presented in Figure 7. The azimuthal velocity scale length is calculated as $L_v = |\nabla \ln(v_{E \times B})|^{-1}$. This value is compared to the density gradient scale length, $L_n = |\nabla \ln n|^{-1}$ as a function of normalized shearing rate. This plot shows that for all of the strong

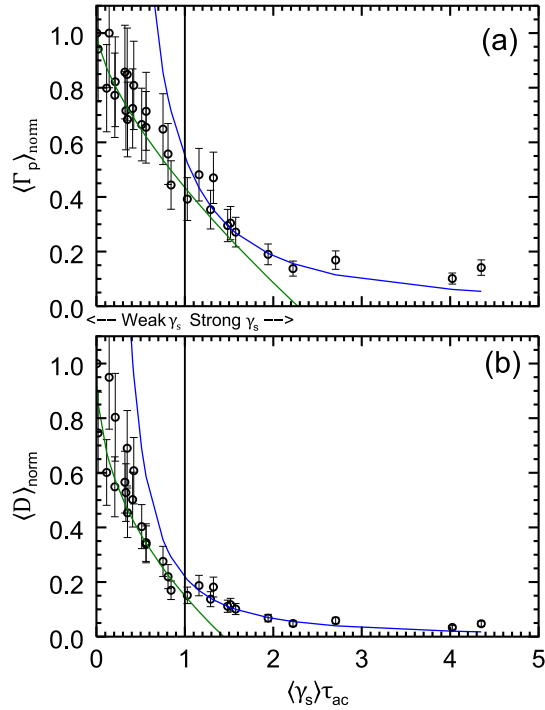


FIG. 5. Scaling of (a) radial particle flux and (b) diffusion coefficient each normalized to the value at minimum shear, $\Gamma_p^0 = 1.7 \times 10^{16} \text{cm}^{-2}$ and $D_0 = 36.7 \text{m}^2/\text{s}$. The green curves correspond to $1 - \gamma_s^\nu$ fits of the weak shear regime with $\nu = 0.693$ for flux and $\nu = 0.445$ for D . The blue curves correspond to γ_s^ν fits with $\nu = -1.571$ for flux and $\nu = -1.715$ for D . The last three points in each plot are not included in the fits do to potential influence of the coherent mode at high shearing rate.

shear regime, and nearly half of the weak shearing regime, $L_n > L_v$. The reverse is true only for the weakest shear. In general, the velocity gradient scale length decreases much faster than the density gradient scale length with increased shearing rate magnitude and is smaller than the density gradient scale length for most of the dataset.

IV. EXPERIMENTAL SHEAR SUPPRESSION SCALING

The variation of the experimentally measured quantities with normalized shearing rate was fit to functions motivated by models discussed above: functions of the form $1 - \gamma_s^\nu$ (hereafter M1) and of γ_s^ν (hereafter M2). For M1, the measured quantity, y , was normalized to the value at zero shear, then transformed as $-(1 - y)$. Then, taking the logarithm of both sides, a linear fit was made for points in the weak shear and in the strong shear separately. The resulting slope of the fit is taken as the power ν . For M2, no transformation of the quantity y is made before taking the logarithm and fitting. For a complete comparison to the wide range of model predictions made, fits were made for density fluctuation amplitude, radial particle flux, density-radial velocity fluctuation crossphase, radial velocity ($E \times B$) fluctuation amplitude, radial correlation length, and experimentally determined diffusivity ($\Gamma/|\nabla n|$). The best fits are summarized in Tables I–VI for each model type and for both weak and strong shear. The χ^2 and χ^2/ndf (where ndf is the number of degrees of freedom) is also indicated in the tables as well as the one standard deviation error, σ , in the fit parameter, ν . For weak shear

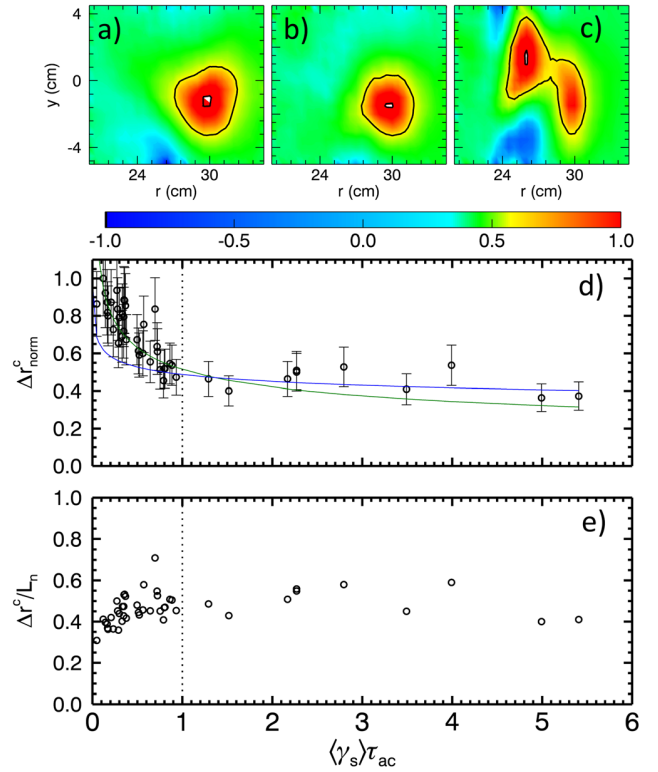


FIG. 6. Normalized correlation functions for (a) unbiased, IDD flow state, (b) no shear state, and (c) high bias, high EDD flow state where the black curve represents a decrease of 0.5 from peak. (Color scale indicates normalized correlation for all three biases.) (d) Radial correlation length normalized to maximum correlation length (5.5 cm) versus normalized shearing rate with M2 fits for weak (green) and strong (blue) shear. (e) Ratio of radial correlation length to density gradient scale length.

fits, all points less than the weak shear cutoff $\gamma_s \tau_{ac} < 1$ are used in the fit. For strong shear, all but the last three points are used. The last points appear to be strongly influenced by the presence of a coherent mode that develops in the highest shear and flow cases and is thought to be a break from the scaling observed in the strong shear regime. For quantities determined by averaging over frequency (e.g., density and velocity fluctuation amplitudes, flux and diffusivity), the frequency band used was 350 Hz to 100 kHz.

The log-log plots in Fig. 8 highlight the break in the trend between the weak and strong shear regimes. It should

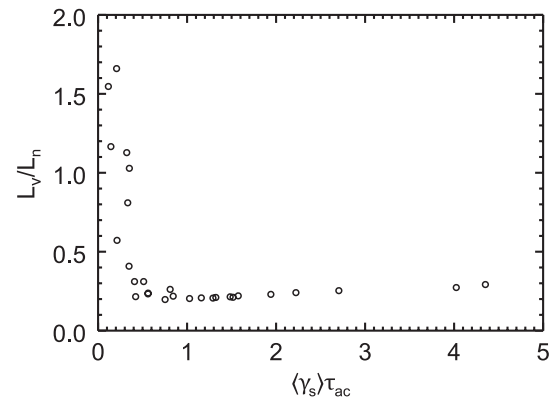


FIG. 7. Ratio of velocity gradient length scale to density gradient length scale versus normalized shearing rate in the radial region of 27 to 31 cm.

TABLE I. Power-law fits for $|\tilde{n}^2|$ with shear for frequencies in 350 Hz to 100 kHz. Model form is the particular model used in the fit, with C a constant and ν resulting best-fit exponent.

| Model form | γ_s regime | ν | χ^2 | χ^2/ndf | σ |
|--------------------------|-------------------------|--------|----------|--------------|----------|
| $\sim 1 - C\gamma_s^\nu$ | $\gamma_s\tau_{ac} < 1$ | 0.743 | 7.644 | 0.450 | 0.164 |
| $\sim 1 - C\gamma_s^\nu$ | $\gamma_s\tau_{ac} > 1$ | 0.218 | 0.337 | 0.037 | 0.118 |
| $\sim C\gamma_s^\nu$ | $\gamma_s\tau_{ac} < 1$ | -0.178 | 25.08 | 1.320 | 0.038 |
| $\sim C\gamma_s^\nu$ | $\gamma_s\tau_{ac} > 1$ | -0.513 | 0.254 | 0.028 | 0.328 |

be noted that while turbulent quantities show a different trend with shear below and above a normalized shearing rate of unity, the density gradient scale length also shows a marked change in behavior.⁸ The gradient scale length decreases rapidly (increasing pressure-gradient drive) in the weak shear regime followed by saturation in the strong shear regime (constant turbulent drive with increased shear). Therefore, care has to be taken in interpreting the change in the trends plotted above: it could be occurring due to a change in the shear regime but also could be due drive.

Lastly, fits were made to a range of shearing rates that spanned portions of both the weak and strong shear regimes; specifically, a range that included all but the lowest two shearing rate values and the three highest shearing rate values (again, dropping the last three to avoid any influence of the coherent mode). The models used are M2 and a third model based on the Zhang and Mahajan interpolated from Eq. (3) which was designed to describe both weak and shear scaling (hereafter M3). Fits, χ^2 values, and σ errors are displayed for density fluctuation amplitude, particle flux,

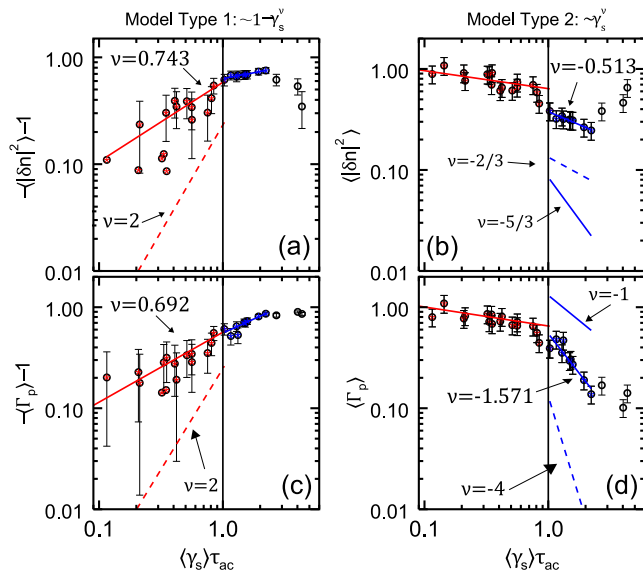


FIG. 8. Log-log plot of (a-b) density fluctuation amplitude and (c-d) particle flux versus shearing rate. Weak shear fits, (a) and (c), are shown with the solid red lines and a theoretical prediction—dashed line—of $\nu = 2$ is included for comparison of slope (line is manually offset). Strong shear fits, (b) and (d), are shown with the solid blue lines and theoretical predictions are indicated with the dashed lines. The last three points in each plot are not included in the fits do to potential influence of the coherent mode at high shearing rate.

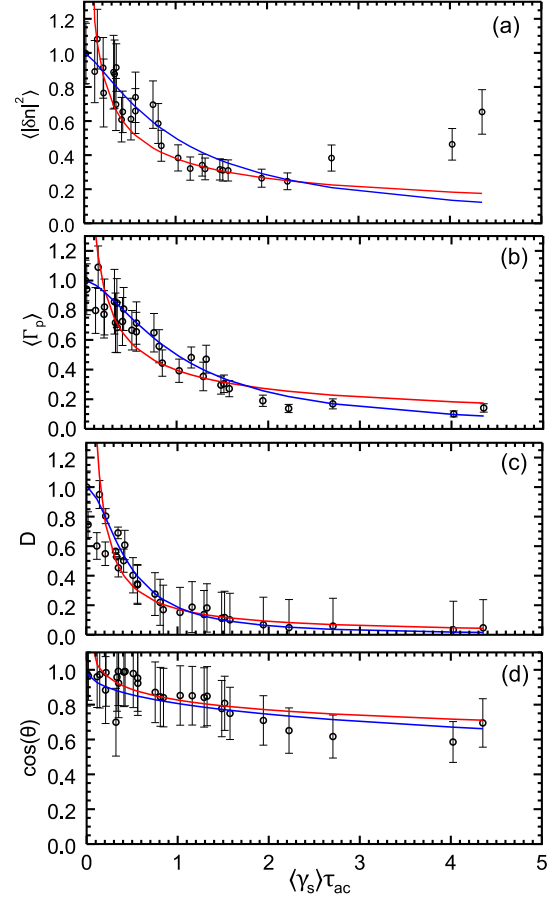


FIG. 9. Fits over a shear range spanning both weak and strong regimes for (a) density fluctuation amplitude, (b) particle flux, (c) diffusivity, and (d) crossphase. Red lines correspond to $\sim C\gamma_s^\nu$ model while the blue curves correspond to the $\sim 1/(1 + C\gamma_s^\nu)$ model.

diffusivity, and crossphase in Table VII and are shown plotted against the data in Figure 9.

V. RESULTS

A. Density and velocity fluctuations

The best fits for scaling of density fluctuation amplitude are shown in Table I. For the weak shear regime, the χ^2 values suggest M1 to be a slightly better fit to the data than M2. Though M1 is not used for prediction of strong shear scaling in the literature, a fit was made to it here for completeness; values of χ^2 show M2 to be the better model for the strong shear regime.

The $\nu = -0.513$ fit for M2 in the strong shear limit is reasonably close to the BDT prediction of $-2/3$. However, it should be reiterated that BDT assumes a fixed turbulence

TABLE II. Power-law fits for $|\tilde{v}^2|$ scaling with shear for frequencies in 350 Hz to 100 kHz.

| Model form | γ_s regime | ν | χ^2 | χ^2/ndf | σ |
|----------------------|-------------------------|--------|----------|--------------|----------|
| $\sim C\gamma_s^\nu$ | $\gamma_s\tau_{ac} < 1$ | 0.014 | 15.99 | 0.888 | 0.040 |
| $\sim C\gamma_s^\nu$ | $\gamma_s\tau_{ac} > 1$ | -0.866 | 0.392 | 0.056 | 0.360 |

TABLE III. Power-law fits for Γ_p scaling with shear for frequencies in 350 Hz to 100 kHz.

| Model form | γ_s regime | ν | χ^2 | χ^2/ndf | σ |
|--------------------------|-------------------------|--------|----------|--------------|----------|
| $\sim 1 - C\gamma_s^\nu$ | $\gamma_s\tau_{ac} < 1$ | 0.693 | 5.157 | 0.3034 | 0.142 |
| $\sim 1 - C\gamma_s^\nu$ | $\gamma_s\tau_{ac} > 1$ | 0.556 | 2.899 | 0.3221 | 0.010 |
| $\sim C\gamma_s^\nu$ | $\gamma_s\tau_{ac} < 1$ | -0.188 | 29.84 | 1.57 | 0.038 |
| $\sim C\gamma_s^\nu$ | $\gamma_s\tau_{ac} > 1$ | -1.571 | 4.013 | 0.446 | 0.327 |

drive and that in this dataset, the gradient scale length decreases substantially as shear is increased, resulting in an increase in turbulent drive. This actually implies a stronger than BDT scaling of fluctuation amplitude suppression overall. The fit scaling is much smaller than that predicted by Kim/Diamond ($\nu = -5/3$) and Newton/Kim ($\nu = -2.41$). For M2 weak shear, the experimental fit of $\nu = -0.178$ also suggests weaker scaling than the prediction by Kim/Diamond of $-(2/3)$.

A prediction for the scaling of radial velocity fluctuation amplitude is only made by Kim and Diamond,²⁴ in the dynamically evolved case. Fits, listed in Table II, suggest a much weaker scaling than predicted for both weak and strong shear. The weak shear fit actually shows a slight increase in fluctuation amplitude rather than a $\nu = -3$ scaling while in the strong shear regime a fit of $\nu = -0.866 \ll -4$ is found.

From fits over the full range of shearing rates, shown in Table VII, M3 appears to be a slightly better model than M2. The M2 fit, $\nu = -0.527$, is similar to the strong shear only fit, but clearly has a worse χ^2 value.

B. Flux and diffusivity

Particle flux and diffusivity fits and χ^2 results are shown in Tables III and IV, respectively. Like density fluctuations, M1 seems to be slightly better than M2 for fitting data in the weak shear limit based on χ^2 values. However, for strong shear, the M1 model actually has a lower χ^2 than the M2 model, though M1 is not derived in the strong shear limit in the literature. Despite the higher χ^2 , the fit of $\nu = -1.571$ falls in between the extremes of predictions of $\nu = -1$ and $\nu = -4$. The weak shear fit of $\nu = -0.188$ falls far short of the Kim/Diamond M2 prediction of $\nu = -1$.

Diffusivity has lower χ^2 values for M1 with weak shear and strong shear. The only predictions for D come from Terry and Ware with a functional form like M1 and a numerical simulation result from Newton and Kim²⁵ for evolved turbulence with a finite correlation time. The experimental fit

TABLE IV. Power-law fits for $D = \Gamma_p/\nabla n$ scaling with shear for frequencies in 350 Hz to 100 kHz.

| Model form | γ_s regime | ν | χ^2 | χ^2/ndf | σ |
|--------------------------|-------------------------|--------|----------|--------------|----------|
| $\sim 1 - C\gamma_s^\nu$ | $\gamma_s\tau_{ac} < 1$ | 0.445 | 11.60 | 0.682 | 0.054 |
| $\sim 1 - C\gamma_s^\nu$ | $\gamma_s\tau_{ac} > 1$ | 0.187 | 3.188 | 0.354 | 0.030 |
| $\sim C\gamma_s^\nu$ | $\gamma_s\tau_{ac} < 1$ | -0.300 | 50.43 | 2.65 | 0.040 |
| $\sim C\gamma_s^\nu$ | $\gamma_s\tau_{ac} > 1$ | -1.715 | 4.610 | 0.512 | 0.327 |

TABLE V. Power-law fits for $\cos(\theta_{nv_r})$ scaling with shear for frequencies in 350 Hz to 100 kHz.

| Model form | γ_s regime | ν | χ^2 | χ^2/ndf | σ |
|--------------------------|-------------------------|--------|----------|--------------|----------|
| $\sim 1 - C\gamma_s^\nu$ | $\gamma_s\tau_{ac} < 1$ | 0.324 | 2.89 | 0.152 | 0.545 |
| $\sim 1 - C\gamma_s^\nu$ | $\gamma_s\tau_{ac} > 1$ | 1.272 | 0.037 | 0.004 | 1.573 |
| $\sim C\gamma_s^\nu$ | $\gamma_s\tau_{ac} < 1$ | -0.022 | 2.49 | 0.131 | 0.040 |
| $\sim C\gamma_s^\nu$ | $\gamma_s\tau_{ac} > 1$ | -0.373 | 0.155 | 0.017 | 0.328 |

of $\nu = 0.445$ again falls short of the Terry/Ware predicted $\nu = 2$, though the M2 fit in the strong shear limit with $\nu = -1.715$ is extremely close to the Newton/Kim predicted value of $\nu = -1.75$. The full range results suggest M3 a slightly better fit for flux while M2 a slightly better fit for diffusivity.

C. Crossphase and correlation length

Fits for the scaling of cosine of the crossphase between density and radial velocity fluctuations are shown in Table V. M1 is found to fit only slightly better than M2 for both weak and strong shear limits. The M2 fit in the weak limit of $\nu = -0.022$ and M2 fit in the strong limit of $\nu = -0.373$ both tend to support the prediction of mild scaling with crossphase made by Kim/Diamond with $\nu = -(1/6)$ and Newton/Kim with $\nu = -0.22$, rather than the large scaling of $\nu = -3$ made by Terry.²² In fact, the full range fit of M2 for crossphase of $\nu = -0.102$ is in excellent agreement with the Kim/Diamond fit of $\nu = -(1/6)$ which is predicted for *both* weak and strong shear.

It should be pointed out that the variation of cross-phase with shear in this dataset is markedly different than what was observed in an earlier LAPD experiment where flow was driven by biasing the vacuum chamber wall.⁷ This previous experiment was performed at lower magnetic field and at larger bias, resulting in a stronger $E \times B$ rotation and much stronger normalized shearing rate ($\gamma_s\tau_{ac} \sim 20$). In that work, a strong modification of cross-phase was observed (with little to no amplitude reduction).

Finally, a fit to radial correlation length is made and compared to the prediction made by BDT.¹⁶ Neither the weak shear fit of $\nu = -0.290$ nor the strong shear of $\nu = -0.113$ is unreasonably far from the predicted value of $\nu = -1/3$ though the χ^2 values do not suggest a great fit to either model. It should again be noted that these correlation lengths are measured in the steady-state period when the density gradient scale length will have already adjusted due to the change in transport. Thus, this decrease in radial correlation length could be due to the turbulence adjusting to the new gradient scale length rather than a direct response to shear. In Figure 6(b),

TABLE VI. Power-law fits for Δr_c scaling with shear for frequencies in 350 Hz to 100 kHz.

| Model form | γ_s regime | ν | χ^2 | χ^2/ndf | σ |
|----------------------|-------------------------|--------|----------|--------------|----------|
| $\sim C\gamma_s^\nu$ | $\gamma_s\tau_{ac} < 1$ | -0.290 | 5.8730 | 0.1631 | 0.084 |
| $\sim C\gamma_s^\nu$ | $\gamma_s\tau_{ac} > 1$ | -0.113 | 3.7040 | 0.3370 | 0.111 |

TABLE VII. Power law fits for all quantities over a range that spans both weak and strong shear. The smallest two shearing rate values are excluded to improve the fitting routine and the three highest shearing rate values are excluded to avoid effects of the coherent mode.

| Parameter | Model form | ν | χ^2 | χ^2/ndf | σ |
|---------------------------------|------------------------------|--------|----------|--------------|----------|
| $\langle \tilde{n}^2 \rangle$ | $\sim 1/(1 + C\gamma_s^\nu)$ | 1.229 | 11.07 | 0.461 | 0.143 |
| $\langle \tilde{n}^2 \rangle$ | $\sim C\gamma_s^\nu$ | -0.527 | 13.63 | 0.568 | 0.059 |
| $\langle \Gamma_p \rangle$ | $\sim 1/(1 + C\gamma_s^\nu)$ | 1.555 | 21.68 | 0.903 | 0.124 |
| $\langle \Gamma_p \rangle$ | $\sim C\gamma_s^\nu$ | -0.557 | 28.65 | 1.193 | 0.059 |
| $\langle D \rangle$ | $\sim 1/(1 + C\gamma_s^\nu)$ | 1.174 | 74.84 | 3.12 | 0.047 |
| $\langle D \rangle$ | $\sim C\gamma_s^\nu$ | -0.938 | 37.16 | 1.55 | 0.059 |
| $\cos(\theta_{nv_r})$ | $\sim 1/(1 + C\gamma_s^\nu)$ | 0.514 | 9.12 | 0.405 | 0.278 |
| $\cos(\theta_{nv_r})$ | $\sim C\gamma_s^\nu$ | -0.102 | 3.621 | 0.151 | 0.059 |

the ratio of the radial correlation length to the density gradient scale length is shown, indicating that this ratio remains constant with shearing rate. In order to evaluate the effect of shearing rate on radial correlation length independent of changes to the gradient scale length, the correlation length could be studied in the transient phase after the flow is turned on but before the profile has had time to steepen. Investigation of the dynamics of the transition will be the subject of future work.

VI. DISCUSSION

While the large variation in fits for six turbulent quantities makes careful model validation difficult, there are a number of conclusions that can be drawn from the analysis reported here. First the experimental results from this dataset show a distinct difference in scaling between the weak and strong shear regimes, consistent with expectations from many models. The models fit to separate regimes generally have lower or at least comparable χ^2 values than those fit to a range in shearing rate that spans both weak and strong regimes. Second, none of the three models tested were clearly better than the others based on χ^2 goodness of fit. The fits were generally not very close to predicted values though a few quantities did yield fits that were very close to the theory—namely, the strong shear density M2 fit of $\nu = -0.515$, the strong shear M2 diffusivity fit of $\nu = -1.715$, and the full range crossphase M2 fit of $\nu = -0.102$. However, the goodness-of-fit for the alternative models in each of these cases were either not significantly worse, or were in fact better. Third, the data clearly support the prediction that density fluctuation amplitude is more strongly suppressed than the crossphase and thus makes a more significant contribution to the suppression of radial transport. However it should be noted that at much stronger shear (in previous LAPD datasets), dominant modification of crossphase is observed. Finally, as indicated by the wide range of predictions, the scaling of shear suppression may be dependent on the nature of the turbulence used in the model. Many of the suppression models discussed are mode specific such as RPGDT for the Terry/Ware models or interchange turbulence for the later Kim/Diamond models. Neither of these two models fit the LAPD results

quantitatively well which suggests the need for a model based on LAPD-specific turbulent drive.

VII. CONCLUSIONS

Power-law fits have been performed against experimental measurements of density fluctuations, radial velocity fluctuations, particle flux, crossphase, diffusivity, and radial correlation length as a function of shearing rate. These fits have been compared to a range of decorrelation models of shear suppression. No model correctly captures the observed variation in all turbulent quantities; however, some models do make predictions which are close to observations for one or two turbulent quantities. Qualitative agreement with some models is found: in particular in the fact that transport suppression is found experimentally to be due to fluctuation amplitude reduction rather than by crossphase change. The quantitative disagreement with these models could arise due to a number of issues. Models that assume a fixed turbulent drive (do not allow for changes in density gradient scale length) are unlikely to match the data. Additionally, many models assume a turbulence model which may be inappropriate (ITG or interchange drive are unlikely to be relevant to LAPD, although rotational interchange can be active). While the various models cited in this paper deal with constant sheared flow, variations in scalings may arise due to fluctuations in the shearing rate.^{24,28,29} It is also possible that decorrelation is incorrect as the underlying physical mechanism for shear suppression. Alternative models have been proposed, including enhanced coupling to damped eigenmodes³⁰ (this model focuses mainly on zonal flows rather than mean flows, however) or suppression due to spectral shift.³¹ Comparison of this dataset to predictions made by alternative shear suppression models will be the subject of future work. Additionally, comparison to direct numerical simulation of LAPD turbulence in the presence of sheared flow will be undertaken in the future. This work will build on prior work simulating LAPD turbulence using the BOUT++ code.^{32–34}

ACKNOWLEDGMENTS

The authors would like to thank Zoltan Lucky and Marvin Drandell for their valuable technical support. This work was supported by the National Science Foundation (PHY-0903913) and performed using the Basic Plasma Science Facility at UCLA. The BaPSF is funded by the Department of Energy and NSF.

¹K. Burrell, *Phys. Plasmas* **4**, 1499 (1997).

²K. Burrell, *Phys. Plasmas* **6**, 4418 (1999).

³P. Terry, *Rev. Mod. Phys.* **72**, 109 (2000).

⁴G. Van Oost, J. Adamek, V. Antoni, P. Balan, J. A. Boedo, P. Devynck, I. Duran, L. Eliseev, J. P. Gunn, M. Hron, C. Ionita, S. Jachmich, G. S. Kirnev, E. Martines, A. Melnikov, R. Schrittwieser, C. Silva, J. Stockel, M. Tendler, C. Varandas, M. Van Schoor, V. Vershkov, and R. R. Weynants, *Plasma Phys. Controlled Fusion* **45**, 621 (2003).

⁵O. Sakai, Y. Yasaka, and R. Itatani, *Phys. Rev. Lett.* **70**, 4071 (1993).

⁶J. E. Maggs, T. A. Carter, and R. J. Taylor, *Phys. Plasmas* **14**, 052507 (2007).

⁷T. A. Carter and J. E. Maggs, *Phys. Plasmas* **16**, 012304 (2009).

⁸D. A. Schaffner, T. A. Carter, G. D. Rossi, D. S. Guice, J. E. Maggs, S. Vincena, and B. Friedman, *Phys. Rev. Lett.* **109**, 135002 (2012).

- ⁹K. H. Burrell, T. N. Carlstrom, E. J. Doyle, D. Finkenthal, P. Gohil, R. J. Groebner, D. L. Hillis, J. Kim, H. Matsumoto, R. A. Moyer, T. H. Osborne, C. L. Rettig, W. A. Peebles, T. L. Rhodes, H. St. John, R. D. Stambaugh, M. R. Wade, and J. G. Watkins, *Plasma Phys. Controlled Fusion* **34**, 1859 (1992).
- ¹⁰F. Wagner, *Plasma Phys. Controlled Fusion* **49**, B1 (2007).
- ¹¹R. J. Taylor, M. L. Brown, B. D. Fried, H. Grote, J. R. Liberati, G. J. Morales, P. Pribyl, D. Darrow, and M. Ono, *Phys. Rev. Lett.* **63**, 2365 (1989).
- ¹²R. R. Weynants, G. Van Oost, G. Bertschinger, J. Boedo, P. Brys, T. Delvigne, K. H. Dippel, F. Durodie, H. Euringer, K. H. Finken, D. S. Gray, J. D. Hey, D. L. Hillis, J. T. Hogan, L. Konan, R. Leners, A. M. Messian, A. Pospieszcyck, U. Samm, R. P. Schorn, B. Schweer, G. Telesca, R. Vannieuwenhove, and P. E. Vandenplas, *Nucl. Fusion* **32**, 837 (1992).
- ¹³R. R. Weynants, S. Jachmich, and G. Van Oost, *Plasma Phys. Controlled Fusion* **40**, 635 (1998).
- ¹⁴J. Boedo, D. Gray, S. Jachmich, R. Conn, G. P. Terry, G. Tynan, G. Van Oost, R. R. Weynants, and TEXTOR Team, *Nucl. Fusion* **40**(7), 1397 (2000).
- ¹⁵J. A. Boedo, D. S. Gray, P. W. Terry, S. Jachmich, G. R. Tynan, R. W. Conn, and TEXTOR-94 Team, *Nucl. Fusion* **42**, 117 (2002).
- ¹⁶H. Biglari, P. H. Diamond, and P. W. Terry, *Phys. Fluids B* **2**, 1 (1990).
- ¹⁷K. C. Shaing, E. C. Crume, and W. A. Houlberg, *Phys. Fluids B* **2**(6), 1492 (1990).
- ¹⁸Y. Z. Zhang and S. M. Mahajan, *Phys. Fluids B* **4**, 1385 (1992).
- ¹⁹Y. Z. Zhang and S. M. Mahajan, *Phys. Fluids B* **5**(7), 2000 (1993).
- ²⁰A. S. Ware, P. W. Terry, P. H. Diamond, and B. A. Carreras, *Plasma Phys. Controlled Fusion* **38**, 1343 (1996).
- ²¹A. S. Ware, P. W. Terry, B. A. Carreras, and P. H. Diamond, *Phys. Plasmas* **5**, 173 (1998).
- ²²P. W. Terry, D. E. Newman, and A. S. Ware, *Phys. Rev. Lett.* **87**, 185001 (2001).
- ²³E.-J. Kim and P. H. Diamond, *Phys. Rev. Lett.* **91**(7), 075001 (2003).
- ²⁴E.-J. Kim, P. H. Diamond, and T. S. Hahm, *Phys. Plasmas* **11**(10), 4554 (2004).
- ²⁵A. P. L. Newton and E.-J. Kim, *Phys. Plasmas* **18**, 052305 (2011).
- ²⁶W. Gekelman, H. Pfister, Z. Lucky, J. Bamber, D. Leneman, and J. Maggs, *Rev. Sci. Instrum.* **62**, 2875 (1991).
- ²⁷T. S. Hahm, *Phys. Plasmas* **1**, 2940 (1994).
- ²⁸M. Leconte, P. Beyer, S. Benkadda, and X. Garbet, *Phys. Plasmas* **13**, 112301 (2006).
- ²⁹A. P. L. Newton and E.-J. Kim, *Phys. Plasmas* **14**, 122306 (2007).
- ³⁰P. W. Terry and R. Gatto, *Phys. Plasmas* **13**, 062309 (2006).
- ³¹G. M. Staebler, R. E. Waltz, J. Candy, and J. E. Kinsey, *Phys. Rev. Lett.* **110**, 055003, (2013).
- ³²B. Friedman, T. A. Carter, M. V. Umansky, D. Schaffner, and B. Dudson, *Phys. Plasmas* **19**, 102307 (2012).
- ³³M. Umansky *et al.*, *Phys. Plasmas* **18**, 055709 (2011).
- ³⁴P. Popovich, M. V. Umansky, T. A. Carter, and B. Friedman, *Phys. Plasmas* **17**, 122312 (2010).