

Bryn Mawr College
Scholarship, Research, and Creative Work at Bryn Mawr
College

Books, pamphlets, catalogues, and scrapbooks

Bryn Mawr College Publications, Special
Collections, Digitized Books

1934

Bryn Mawr College, Bryn Mawr, Pennsylvania

Marjorie Thompson
Bryn Mawr College

[Let us know how access to this document benefits you.](#)

Follow this and additional works at: http://repository.brynmawr.edu/bmc_books

 Part of the [Liberal Studies Commons](#), and the [Women's History Commons](#)

Custom Citation

Thompson, Marjorie, *Bryn Mawr College*. (Bryn Mawr, Pennsylvania: Bryn Mawr College, 1934).

This paper is posted at Scholarship, Research, and Creative Work at Bryn Mawr College. http://repository.brynmawr.edu/bmc_books/4

For more information, please contact repository@brynmawr.edu.

BRYN MAWR COLLEGE



BRYN MAWR • PENNSYLVANIA

F O R E W O R D



WHEN Bryn Mawr College was founded, in 1885, those who were responsible for the destinies of the college were convinced of the relationship between beauty of environment and the training of mind and spirit. The situation that was chosen, in rolling country, not far from Philadelphia, was admirably suited to their plan. The campus has for every one who sees it a charm not easily put into words. The grey stone buildings, for the most part late English Renaissance in type, both by their design and placing, give a unity of impression, and make fifty years seem a short time for the campus to have grown into such mellow yet ageless beauty. Alumnae of earlier college generations, however, remember this same quality twenty or thirty years ago. New buildings have been added since that time but they have fitted harmoniously into the pattern. For these earlier alumnae the photographs will be evocative and will call up the college as they knew it, yet will help them to envisage it as it is to-day. For more recent graduates there will be in the pictures the charm of familiarity. For any one who is a stranger to the college no words can give so true a conception of the enchantment of light and shadow, of the long lines of the buildings, or of the wide, sun-lit spaces of the campus. With all of these things in mind the book was compiled, and it is dedicated to those who know the college and those who have yet to know it.



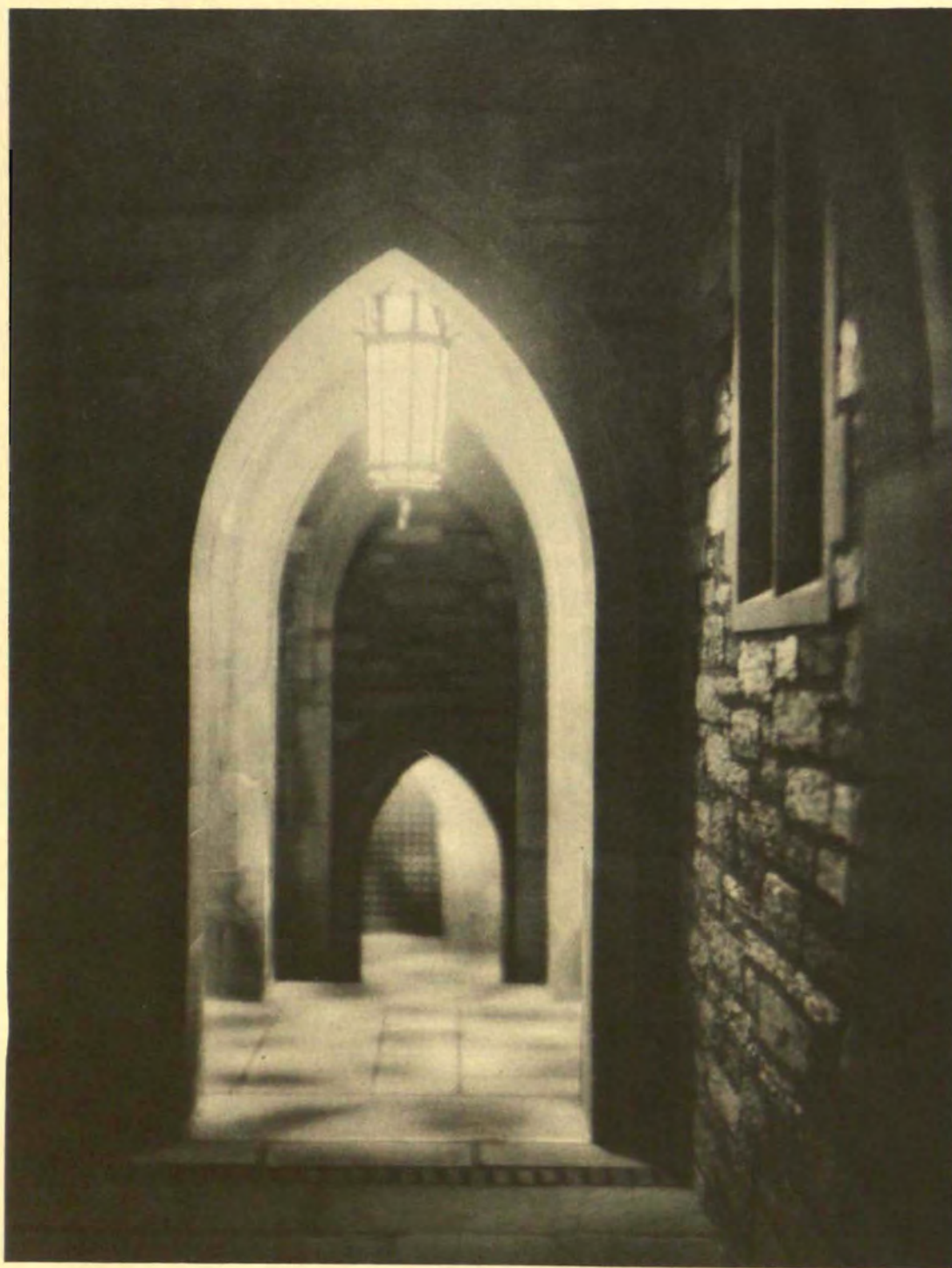
Marjorie Walter Goodhart Hall: The view from Rockefeller Hall of the south front showing the entrance to the auditorium. To the north of this main building is the students' wing, ending in the Common Room, and to the west, the music wing.



Goodhart Hall, the Common Room: This room, entirely under the control of the students themselves, is their gathering place as well as the setting for informal lectures and parties.



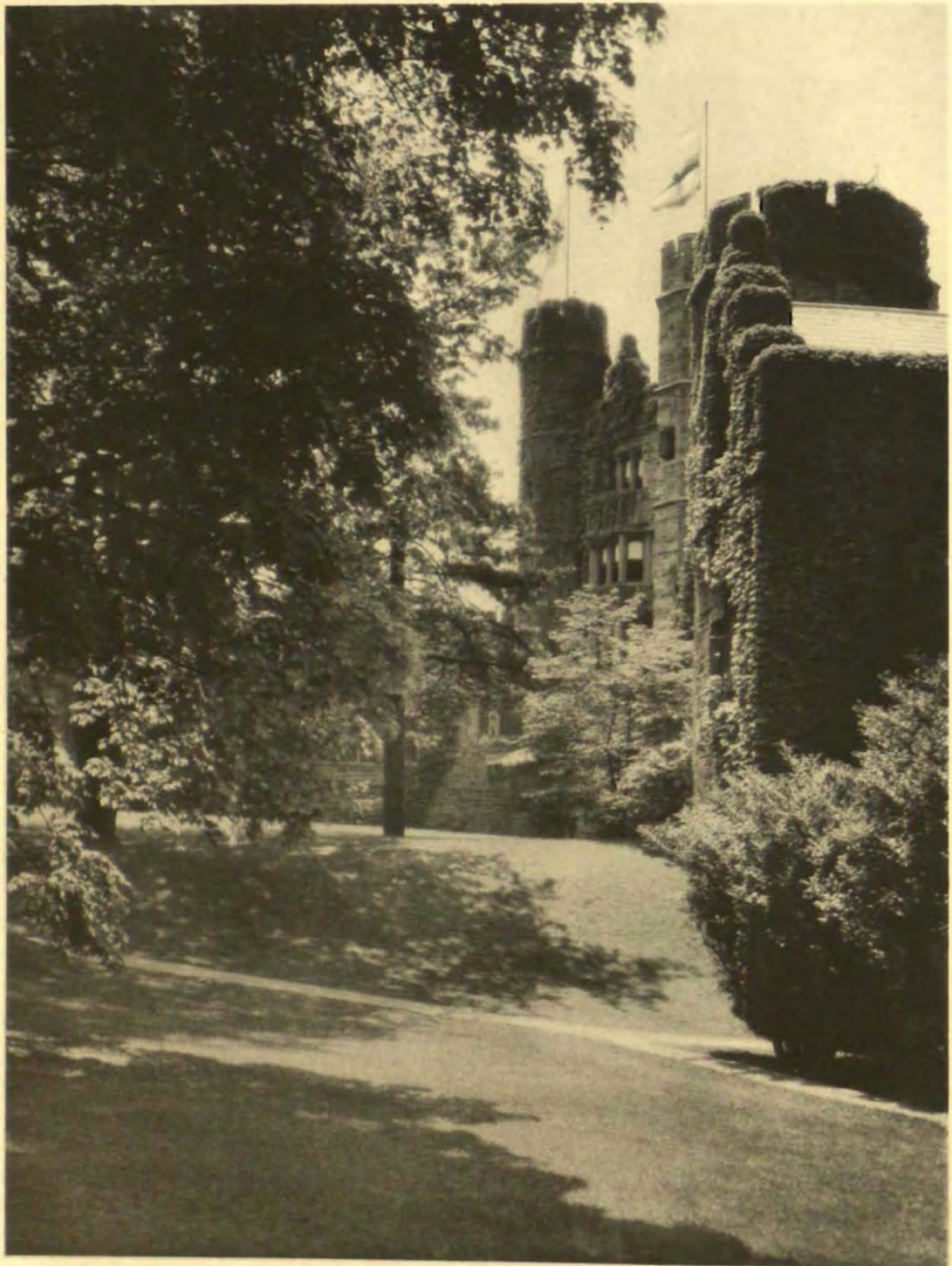
Goodhart Hall, the Auditorium: All formal college events—plays, lectures, concerts, and on special occasions, College Chapel—take place here.



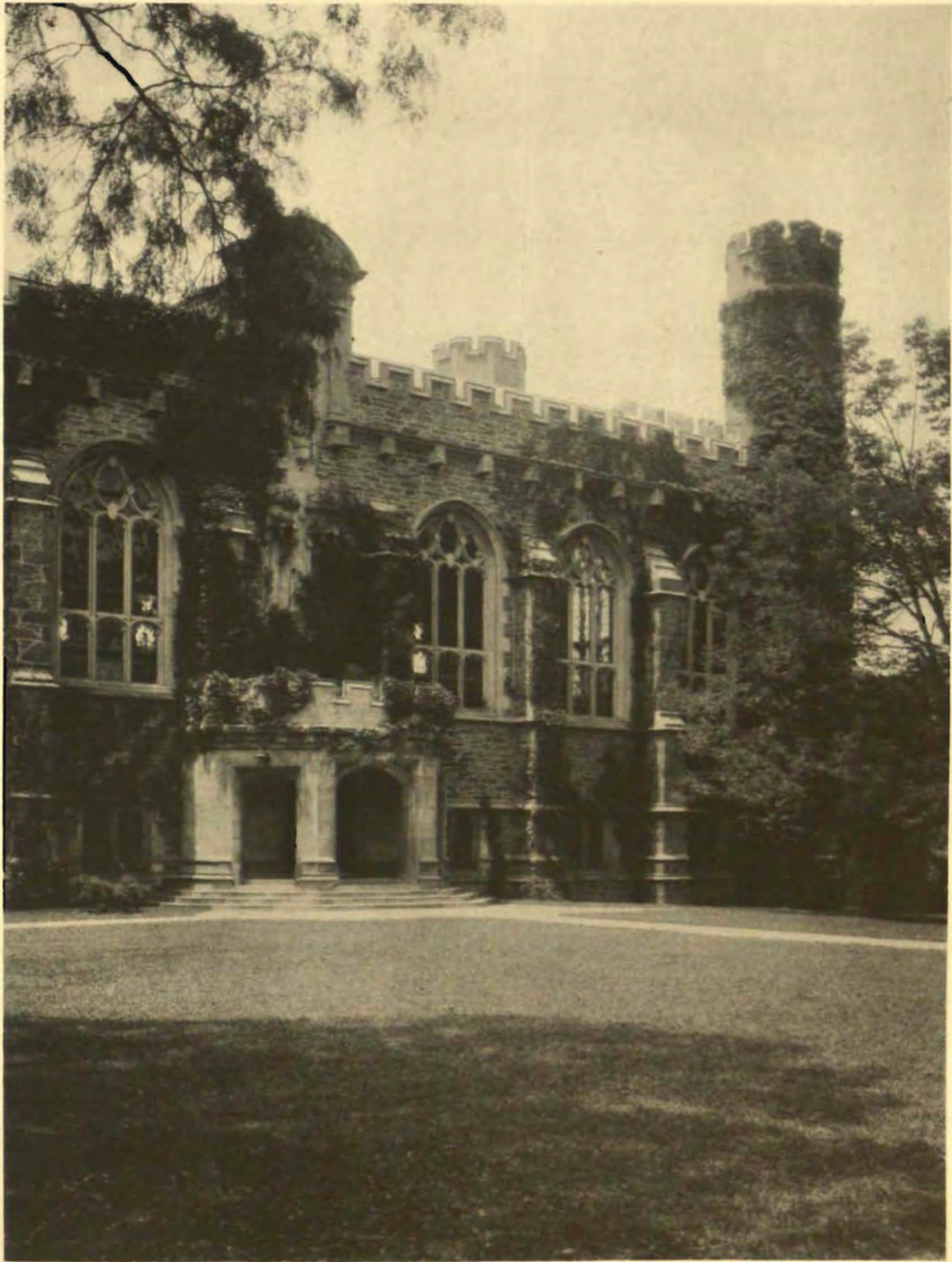
Goodhart Hall, the Music Walk at Night: An outside passage-way leading from the front of the building, down a flight of steps, to the music wing.



Rockefeller Hall, one of the Halls of Residence: The view from the front of Goodhart Hall, showing the heraldic banners which fly from the towers of all the college buildings on special occasions, such as Commencement and May Day.



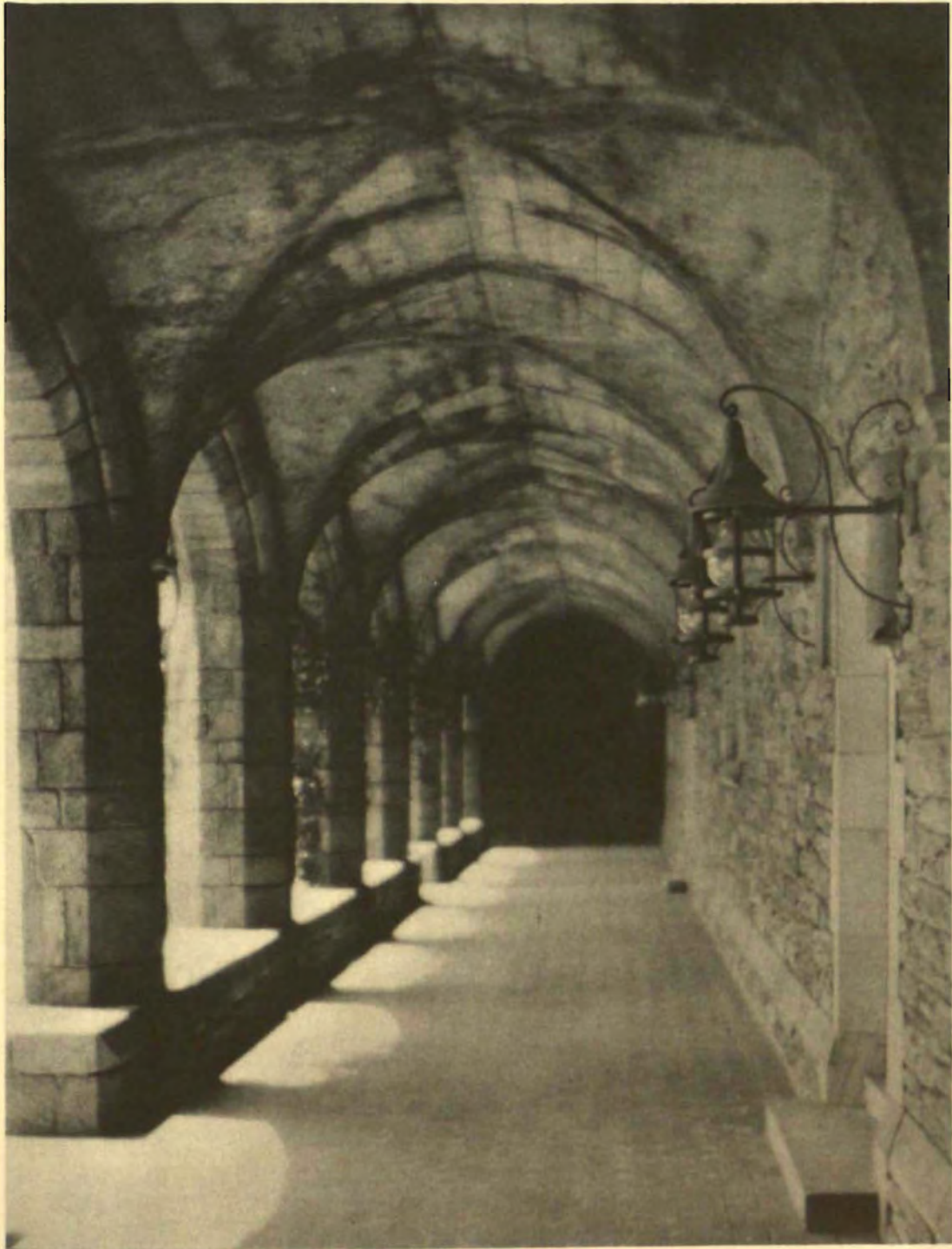
Rockefeller Hall : The view of the towers and the dining-room wing from the path that leads from Goodhart Hall up to the campus.



The Library, the East Front from the Campus: This main building is given over chiefly to the stacks and reading room.



The Library, the Reading Room: The Paul Manship bust of President-emeritus Thomas shows at the left of the door-way.



The Library Cloister: This encloses three sides of a quadrangle of which the main building forms the fourth.



The Library, the Cloister Garden: With its fountain it is an effective setting for outdoor plays.



Lantern Night Procession in the Cloisters: Part of the ceremony at which the Sophomores give the Freshmen their class lanterns.



Taylor Hall, the Central Academic Building: Named after the founder of the college, and containing the offices of administration and of the Alumnae Association, as well as lecture rooms.



The Campus in Winter: View down the path which runs between Pembroke West and the Library and leads to Rockefeller Arch.



The Deanery Garden: The steps, flanked by stone lions from Manchuria, lead from the upper to the lower terrace.



The Deanery, the Main Room: In 1933, President-emeritus Thomas made it possible for the Deanery, in which she had lived since the opening of the college, to be used as the Alumnae House.



Wyndham, sometimes used as a Hall of Residence for Freshmen: It was purchased by the Trustees in 1926, and stands in its own grounds directly opposite Pembroke West.



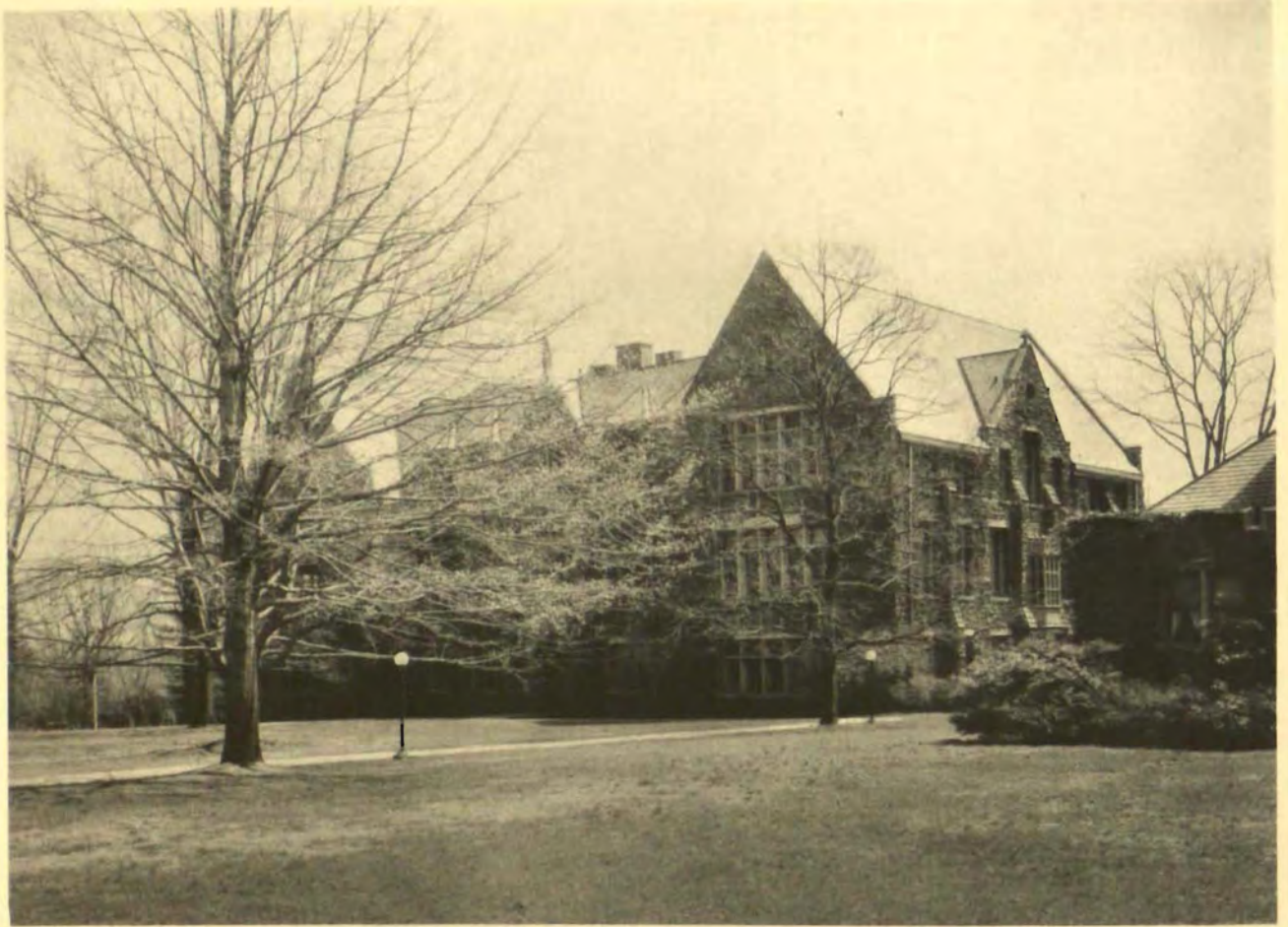
Pembroke Arch: The view through the arch gives one of the first impressions of the campus.



Pembroke Tower from the Campus: The tower, pierced by the arch, connects Pembroke East and Pembroke West, two halls of residence.



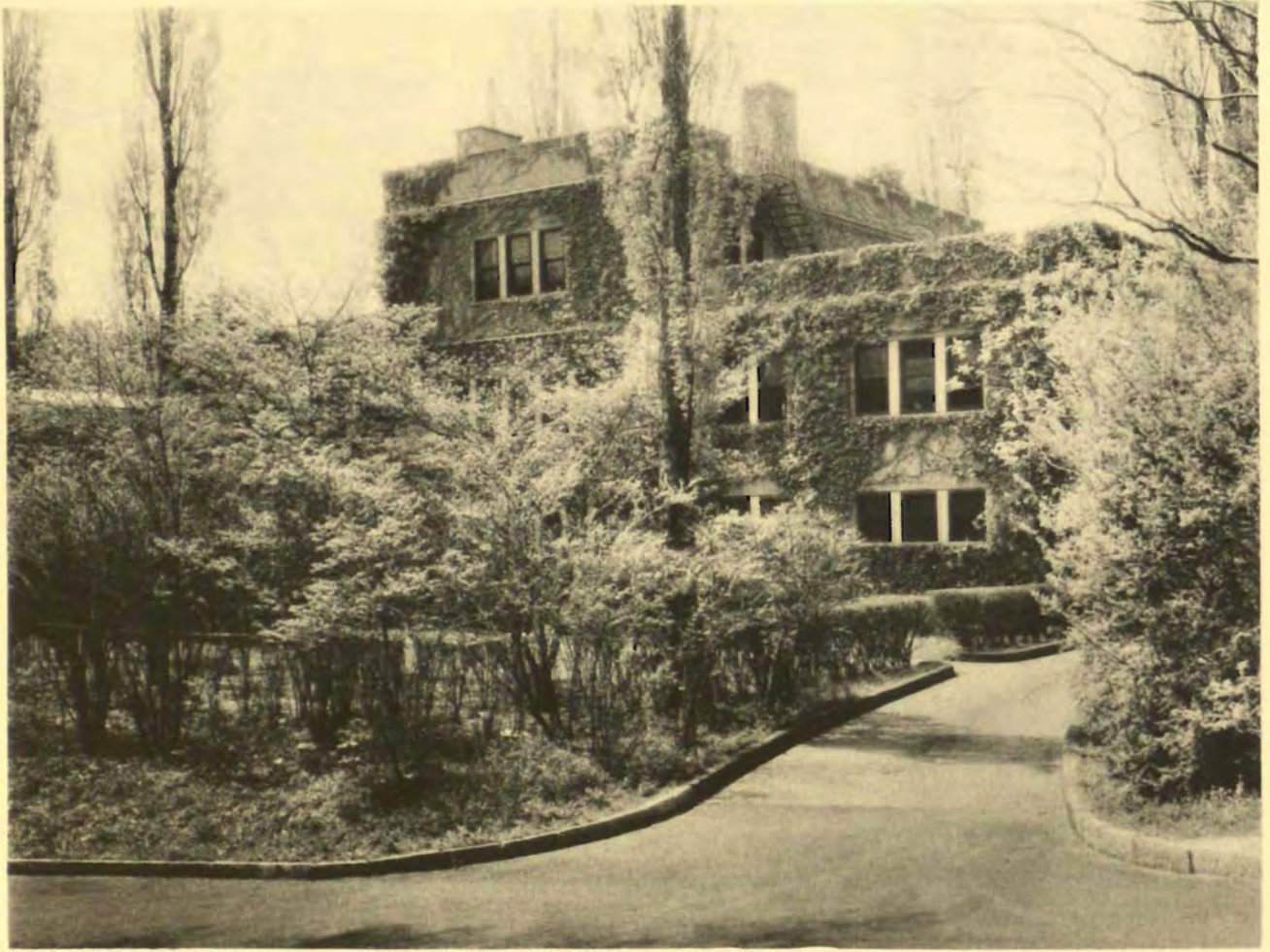
Pembroke East: The main entrance and staircase indicate something of the character of the other halls of residence.



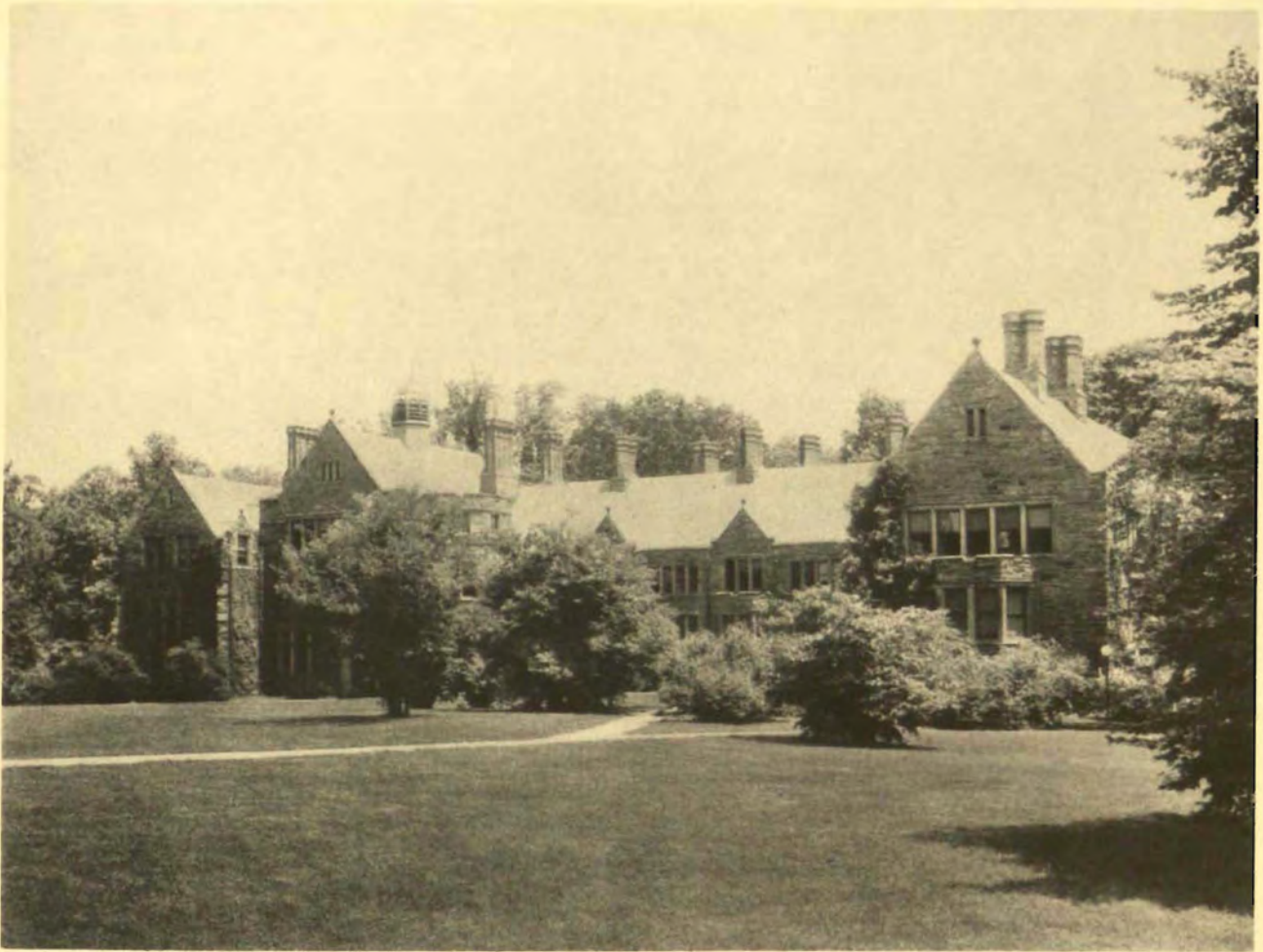
Dalton Hall: All the scientific departments are housed in this building.



Dalton Hall, the Laboratory for General Biology: The departments of Physics, Chemistry, and Geology also have their special libraries, laboratories, and class-rooms.



The College Infirmary: Called the 1905 Infirmary because it was the gift of that class and friends of the college whom they interested.



Denbigh Hall, One of the Halls of Residence: The West front as seen from the campus.



Merion Hall: The first hall of residence to be opened. It was completed in 1885.



Radnor Hall, the Graduate Students' Hall of Residence. In 1927 it was adapted for their exclusive use.
The Dean of the Graduate School is also in residence there.



The College Gymnasium: Built in 1909 on the site of the first gymnasium.



The Lower Hockey Fields: The view across them, showing some of the faculty houses on Roberts Road.



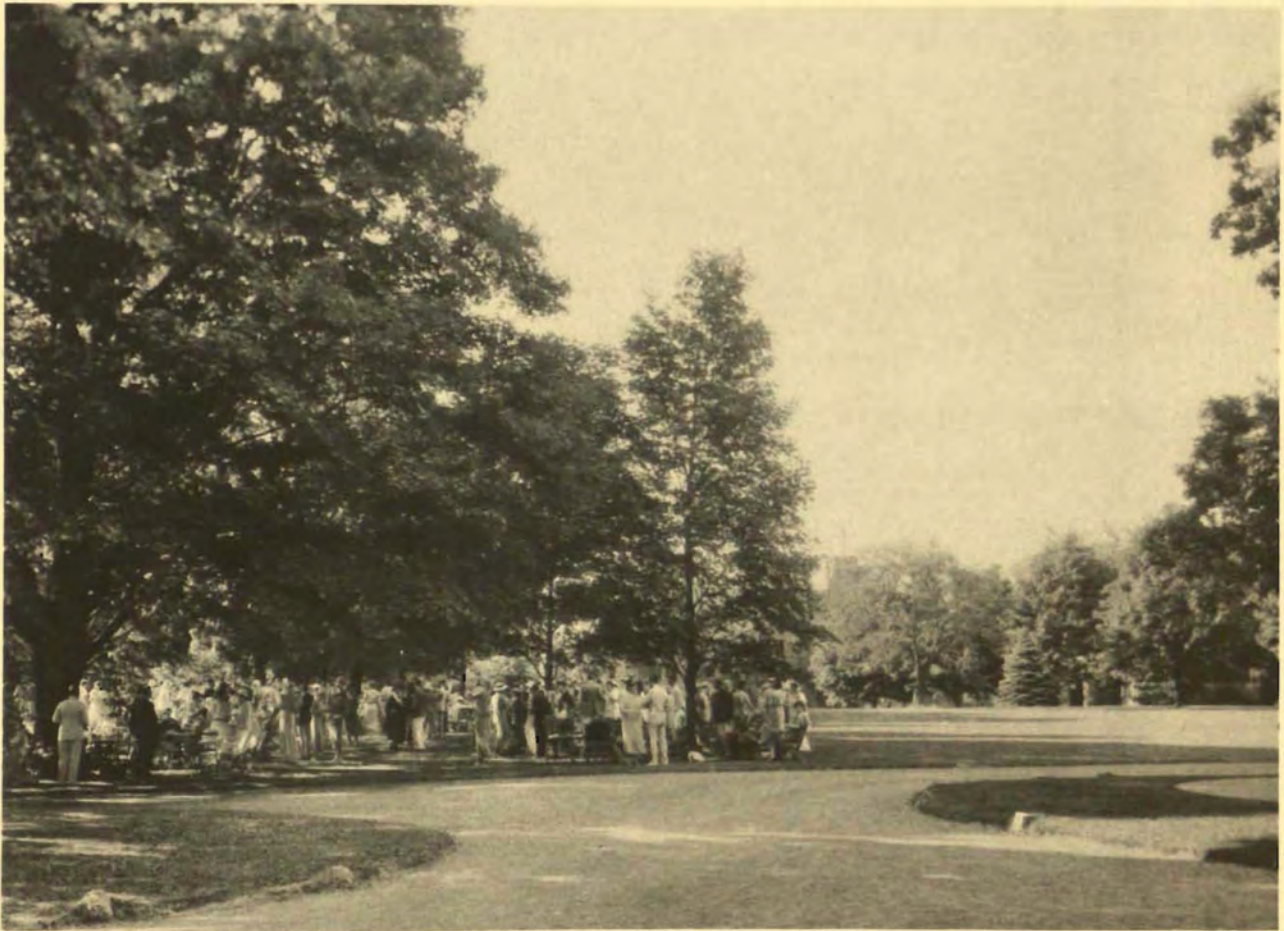
The Japanese Cherry Trees: They stand between Pembroke West and the library.



May Day, the Formal Celebration Held Every Fourth Year: The procession coming up Senior Row to Merion Green for the raising of the May Pole.



Senior Row: The double row of maples, stretching from the upper to the lower campus.



Commencement Garden Party: The Seniors, grouped by Halls, receiving their friends
in the shade of Senior Row.



The Commencement Procession: The end of the procession passing through Rockefeller Arch on the way to Goodhart Hall.

This book was made possible by a friend of Marjorie Walter Goodhart, Bryn Mawr, 1912. The costs of production were completely underwritten in the hope that such a book would give lasting pleasure to all alumnae.

The photographs, with the single exception of the one of May Day, are by Ida W. Pritchett, 1914.

The book was edited by Marjorie Thompson, 1912, Editor of the "Alumnae Bulletin," and may be obtained from the Alumnae Office, Taylor Hall, Bryn Mawr College, Bryn Mawr, Pennsylvania, at a cost of \$1.50 a copy. (10 cents extra for postage).

