

Financialisation and the portuguese private consumption: two contradictory effects?

Andreia Gonçalves

Ricardo Barradas

Março 2018

WP n.º 2018/02

DOCUMENTO DE TRABALHO

WORKING PAPER



ISCTE  IUL
Instituto Universitário de Lisboa

FCT
Fundação para a Ciência e a Tecnologia
MINISTÉRIO DA CIÊNCIA, TECNOLOGIA E ENSINO SUPERIOR



DINAMIA'CET
CENTRO DE ESTUDOS SOBRE A MUDANÇA
SOCIOECONÓMICA E O TERRITÓRIO
ISCTE-IUL

ISCTE IUL
Instituto Universitário de Lisboa

Financialisation and the portuguese private consumption: two contradictory effects?¹

Andreia Gonçalves²

Ricardo Barradas^{3,4}

WP n. ° 2018/02

DOI: 10.15847/dinamiacet-iul.wp.2018.02

1. Introduction	3
2. Literature review	5
3. Model and hypotheses: a private consumption equation	9
4. Data and methodology	12
5. Empirical results	15
6. Conclusion	24
7. References	26
8. Appendix	31

¹ The authors thank the helpful comments and suggestions of Sandro Mendonça and Sérgio Lagoa. The usual disclaimer applies.

² Instituto Universitário de Lisboa (ISCTE-IUL), Lisboa, Portugal. *E-mail: andreia_goncalves@iscte-iul.pt*

³ Instituto Universitário de Lisboa (ISCTE-IUL), Dinâmia'CET-IUL, Lisboa, Portugal. ESCS - Escola Superior de Comunicação Social and ISCAL - Instituto Superior de Contabilidade e Administração de Lisboa, Instituto Politécnico de Lisboa, Lisboa, Portugal. *E-mail: ricardo_barradas@iscte-iul.pt*

⁴ Corresponding author.

Financialisation and the portuguese private consumption: two contradictory effects?

ABSTRACT

This paper makes an empirical evaluation of the relationship between financialisation and the Portuguese private consumption by performing a time series econometric analysis from the first quarter of 1996 to the last quarter of 2016. Framed within the post-Keynesian literature, financialisation has two contradictory effects on private consumption. The first one corresponds to the fall in the households' labour income, which favours a deceleration of private consumption. The second one corresponds to the increase of households' financial and housing wealth, which favours an acceleration of private consumption. The global net effect of financialisation tends to be positive because the beneficial wealth effect suppresses the harmful income effect. We estimated a private consumption equation that includes four control variables (unemployment rate, inflation rate, short-term interest rate and long-term interest rate) and three variables linked to financialisation (labour income, financial wealth and housing wealth). Our results confirm that labour income, financial wealth and housing wealth are positive determinants of Portuguese private consumption. Our results also show that financialisation has represented an important driver of Portuguese private consumption, particularly due to the beneficial effects of financial wealth.

KEYWORDS

Private Consumption, Financialisation, Labour Income, Financial Wealth, Housing Wealth, Portugal, ARDL Model

JEL CLASSIFICATION

C22, D10, E21 and E44

1. INTRODUCTION

During the last several years, finance has acquired great prominence and assumed growing dominance over the economy and society in the majority of countries. This phenomenon, commonly referred to as financialisation, has influenced the behaviour of economic agents, including households. In fact, the majority of households have increased their involvement in the realm of finance either as debtors and/or financial assets holders (Stockhammer, 2010; Lapavistas, 2011; Van der Zwan, 2014; Barradas, 2016), which should have had an important effect on the evolution of total private consumption.

Effectively and following the post-Keynesian literature, scholars on financialisation have argued that this phenomenon has generated two contradictory effects on private consumption (Stockhammer, 2009a; Onaran *et al.*, 2011; Hein, 2012). On the one hand, financialisation has led to a decrease of private consumption due to the decline of households' labour income. On the other hand, financialisation has led to an increase of private consumption due to the rise of households' financial and housing wealth. These authors also highlight that the global net effect of financialisation on private consumption has been positive because the supportive wealth effect has been sufficient to compensate the disruptive income effect.

From an empirical point of view, this issue has been assessed by several empirical studies that build and estimate private consumption equations by relating it with labour income and financial and housing wealth following the permanent income theory and life-cycle theory of consumption (Friedman, 1957; Modigliani and Brumberg, 1954; Ando and Modigliani, 1963). Most of them conclude that labour income, financial wealth and housing wealth are positive determinants of private consumption (Boone *et al.*, 1998; Ludvigson and Steindel, 1999; Davis and Palumbo, 2001; Edison and Sløk, 2001; Mehra, 2001; Boone and Girouard, 2002; Ludwig and Sløk, 2002; Castro, 2007; Farinha, 2008; Sousa, 2008, 2009; Slacalek, 2009; Onaran *et al.*, 2011; Barrel *et al.*, 2015; Barradas, 2017a).

This paper aims to assess the role of financialisation in the evolution of Portuguese private consumption by performing a time series econometric analysis for the period of the first quarter of 1996 to the last quarter of 2016. This paper offers five important novelties to the existing literature. Firstly, the analysis is carried out specifically for Portugal. In fact, the evidence for Portugal is quite rather limited, situated in a context where the majority of empirical studies around this matter focus on highly developed and financialised countries, like the USA (Stockhammer, 2009a; Edison and Sløk, 2001). Portugal is an interesting case study, namely because its growth model in the last several years was essentially supported by the growth of private consumption by following a 'debt-led domestic demand' boom (Barradas *et*

al., 2018), which occurred simultaneously with a general decreasing trend of labour income (Barradas and Lagoa, 2017). Secondly, the analysis covers the period where financialisation becomes more preponderant in Portugal (Barradas *et al.*, 2018). Note that the majority of empirical studies includes a period where financialisation was not so much expressive – even in the USA – taking into account the general recognition that it emerges in the 1970s or 1980s (Kus, 2012; Sawyer, 2013; Vercelli, 2013; Tomaskovic-Devey *et al.*, 2015). Thirdly, the analysis covers the period before, during and after the crisis, whilst the existing literature typically focuses on the period before the crisis. Barrell *et al.* (2015) and Barradas (2017a) are the only exceptions, but their analyses are only centered on the United Kingdom and Italy and on the European Union countries as a whole, respectively. Fourthly, the analysis is carried out not only for the total private consumption or the private consumption of non-durable goods and services, which are the traditional strategies, but also for the private consumption of durable goods. Non-durable and durable private consumption tend to reflect different levels of satisfaction of needs by households, which implies that they can be affected differentially by labour income and (financial and housing) wealth. Fifthly, the analysis also incorporates other important variables in the explanation of private consumption beyond labour income and financial and housing wealth (Church *et al.*, 1994; Boone *et al.*, 1998; Davis and Palumbo, 2001; Boone and Girouard, 2002), which mitigates the problem of omitted relevant variables that could create inconsistent and biased estimates (Wooldridge, 2003; Kutner *et al.*, 2005; Brooks, 2009). We recognise that Castro (2007) and Farinha (2008) also analyse this issue for Portugal, but they follow different strategies. The latter uses microdata at households' level and focuses its analysis only in 1994, 2000 and 2006. The former uses macrodata but its sample does not cover the period where financialisation became more common in Portugal; it also does not cover the recent period of crisis. Moreover, Castro (2007) only estimates the effects of labour income and wealth on private consumption of non-durable goods and neglects other important determinants of private consumption.

Against this backdrop, we modeled and estimated a private consumption equation by incorporating four control variables (unemployment rate, inflation rate, short-term interest rate and long-term interest rate) and three variables linked to the aforementioned contradictory effects of financialisation on private consumption (labour income, financial wealth and housing wealth). Estimates are obtained using the Autoregressive Distributed Lag (ARDL) estimator due to existence of a mixture of variables that are integrated of order zero and one.

This paper concludes that labour income, financial wealth and housing wealth are statistically significant, exerting a positive influence on the Portuguese private consumption.

This paper also concludes that financialisation represents an important driver of Portuguese private consumption, particularly due to the beneficial effects financial wealth.

This paper is organised as follows. Section II presents a literature review on the effects of financialisation on private consumption. In Section III, we build a private consumption equation and present expected theoretical effects of each variable on private consumption. Data and methodology are described in Section IV. Empirical results are discussed in Section V. Finally, Section VI concludes.

2. LITERATURE REVIEW

Since the mid-1980s, finance has become larger in the majority of economies, dominating the real economy and society in general. This phenomenon, typically called as financialisation, has altered the behaviour of economic agents in their relationship into the realm of financial markets (Stockhammer, 2010; Lapavitsas, 2011; Barradas, 2016). Households have become more financially engaged, not only as debtors (particularly through credit), but also as holders of financial assets, which is also valid for the low-income and middle-class ones (Van der Zwan, 2014).

It seems clear, therefore, that financialisation has had an important effect on private consumption over the last several years. Effectively, and according to the post-Keynesian literature, the phenomenon of financialisation has been exerting two contradictory effects on private consumption (Stockhammer, 2009a; Onaran *et al.*, 2011; Hein, 2012).

The first effect corresponds to a decline of the labour income, which tends to exert a negative effect on private consumption. Technological progress and globalisation are the traditional explanations referred in the literature to justify the fall of the labour income in the last years (European Commission, 2007; Stockhammer, 2009b; Guerriero and Sen, 2012; Dühaupt, 2013a). Nonetheless, financialisation has also been referred to as an important driver of the fall of labour income (Hein, 2012; Hein and Detzer, 2014; Michell, 2014; Hein and Dodig, 2015), namely due to three main factors. The first is the alteration of the sectorial composition of economies, namely through the growing importance of the financial sector and the reduction of the weight of the general government. The second is the proliferation of ‘shareholder value orientation’ as a dominating model of corporate governance. The third is the erosion of trade unions with effects in the collective bargaining power of general workers. From an empirical point of view, the detrimental impact of financialisation on labour income has been widely supported (Stockhammer, 2009b and 2017; Kristal, 2010; Peralta and Escalonilla, 2011;

Dünhaupt, 2013b; Lin and Tomaskovic-Devey, 2013; Alvarez, 2015; Köhler *et al.*, 2016; Barradas and Lagoa, 2017; and Barradas, 2017b).

The second effect corresponds to a rise in financial and housing wealth, which tends to exert a positive effect on private consumption. Several reasons are identified in the literature to explain the rise of wealth in recent years, namely a greater availability of credit supported by financial innovation and engineering related to debt securitisation and ‘originate to distribute’ operations (Hein, 2012); an economic situation characterised by historically low interest rates, which has deteriorated creditworthiness standards and has made credit (e.g. mortgages credit, consumer credit, credit cards and overdraft bank accounts) more available, even for low-income and low-wealth households (Hein, 2012); the adoption of more aggressive banking policies in the credit segment (Stockhammer, 2009a) mainly in an environment of increasing competition among banks (Boone and Girouard, 2002); the emergence of new financial instruments, like home equity loans and the aforementioned credit cards; the existence of some stock market and housing price boom episodes (Hein, 2012); and the emergence of remuneration schemes that include incentive payments to employees in the form of stock options (Edison and Sløk, 2001).

Nevertheless, the combined effect of these two contradictory effects on private consumption has been positive because the increase of the wealth has more than compensated for the decrease in labour income (Stockhammer, 2009a; Onaran *et al.*, 2011; Hein, 2012). Effectively, financialisation has allowed households to contour the fall in their wages, feed conspicuous consumption and follow a consumption imitation of Veblen and other goods by ‘keeping up with the Joneses’ (Hein, 2012). This is normally referred to as the ‘demonstration effect’ or ‘Duesenberry effect’ (Duesenberry, 1949). This households’ behaviour in the era of financialisation has supported higher levels of consumption, even in a context of lower income (‘consumption without income’ hypothesis), which is normally called a ‘ratchet effect’ (Duesenberry, 1949). This means that the decrease of labour income does not necessarily imply a decline in the private consumption because households aim to maintain their standard of living by hiding from the other households what that have they lost.

As demonstrated in Table 1, income and wealth effects on private consumption have been widely empirically tested. The majority of these empirical studies estimate private consumption equations by including labour income and wealth as the main determinants of private consumption following the permanent income and life-cycle theories (Friedman, 1957; Modigliani and Brumberg, 1954; Ando and Modigliani, 1963). According to these theories, private consumption essentially depends on households’ permanent income, i.e. the current and expected future labour income plus their stock of wealth. Note that the majority of these

empirical studies finds a positive relationship between labour income, financial and housing wealth and private consumption.

Table 1 – The main empirical studies on the income and wealth effects on private consumption

Authors	Methodology (Sample)	Dependent Variable	Independent Variables
Boone <i>et al.</i> (1998)	Time series G7 countries 1963-1998 (quarterly data) Error correction model	Consumption	Disposable income Unemployment rate Consumption deflator Short-term interest rate Stock market index Real house price index
Ludvigson and Steindel (1999)	Time series USA 1953-1997 (quarterly data) Ordinary least squares and dynamic ordinary least squares	Consumption	Disposable income Stock market wealth Non-stock market wealth
Davis and Palumbo (2001)	Time series USA 1960-2000 (quarterly data) Dynamic ordinary least squares	Consumption	Income Financial wealth Human wealth
Mehra (2001)	Time series USA 1959-2000 (quarterly data) Dynamic ordinary least squares	Consumption of non-durable goods and services	Disposable income Households net worth Corporate equities
Edison and Sløk (2001)	Time series 7 major OECD countries 1990-2000 (monthly data) Vector autoregression	Retail sales	Stock-market capitalization Industrial production
Boone and Girouard (2002)	Time series G7 countries 1970-1992 (quarterly data) Error correction model	Consumption	Disposable income Total wealth Financial wealth Housing wealth Other wealth Interest rate Inflation rate Unemployment rate

Financialisation and the portuguese private consumption: two contradictory effects?

Ludwig and Sløk (2002)	Panel data 16 OECD countries 1960-2000 (quarterly data) Pooled mean group	Consumption	Disposable income Stock market index Housing prices index
Castro (2007)	Time series Portugal 1980-2005 (quarterly data) Dynamic ordinary least squares	Consumption of non-durable goods	Disposable income Net financial wealth Housing wealth
Farinha (2008)	Panel data Portugal 1994, 2000 and 2006 Ordinary least squares and two-stage least squares	Consumption of non-durable goods and services	Income Net total wealth Socio-economic and demographic variables
Sousa (2008)	Time series USA 1953-2004 (quarterly data) Ordinary least squares	Consumption of non-durable goods and services	Labour Income Total wealth Financial wealth Housing wealth Stock market wealth
Sousa (2009)	Time series Euro area 1980-2007 (quarterly data) Dynamic ordinary least squares, instrumental variables and generalised method of moments	Consumption	Disposable income Financial wealth Housing wealth
Slacalek (2009)	Time series 16 countries 1970-2003 (quarterly data) Dynamic ordinary least squares	Consumption	Compensation of employees Net financial wealth Housing prices
Onaran <i>et al.</i> (2011)	Time series USA 1960-2007 (quarterly data) Autoregressive distributed lag	Consumption share	Lags of consumption share Gross operating surplus Rentiers income share Non-rentiers income share Net financial wealth Housing wealth Gross domestic product
Barrel <i>et al.</i> (2015)	Time series United Kingdom and Italy 1972-2012 (quarterly data) Dynamic ordinary least squares	Consumption	Disposable income Net financial assets Housing wealth

Barradas (2017a)	Panel data European Union countries 1995-2015 (annual data) Least squares dummy variable bias corrected	Consumption Consumption of services Consumption of goods (non-durable, semi- durable and durable)	Adjusted labour share Financial assets Nominal housing price index Short-term nominal interest rate Long-term nominal interest rate GDP deflator Unemployment rate
------------------	---	---	---

Source: Authors' own elaboration

This paper aims to make an empirical analysis of the relationship between financialisation and private consumption by performing a time series econometric analysis for the Portuguese economy over the period from the first quarter of 1996 to the last quarter of 2016. This paper aims to contribute to the existing literature in five different ways, namely by analysing Portugal; incorporating the period where financialisation becomes more preponderant in Portugal; incorporating the pre-crisis, crisis and post-crisis periods, respectively; assessing the effects of financialisation not only in total private consumption but also in non-durable and durable private consumption; and by including other control variables in the private consumption equation.

3. MODEL AND HYPOTHESES: A PRIVATE CONSUMPTION EQUATION

Our econometric model estimates a private consumption equation by including seven independent variables. The first four independent variables are the ones that are normally associated with private consumption by functioning as control variables such as: unemployment rate, inflation rate, short-term interest rate and long-term interest rate.⁵ The last three independent variables are linked to the two contradictory effects of financialisation on private consumption: labour income, financial wealth and housing wealth.

Indeed, our long-term private consumption equation takes the following form:

$$PC_t = \beta_0 + \beta_1 UR_t + \beta_2 IR_t + \beta_3 SIR_t + \beta_4 LIR_t + \beta_5 LI_t + \beta_6 FW_t + \beta_7 HW_t + \alpha_t \quad (1)$$

⁵ We include the short-term and the long-term interest rates as determinants of private consumption because households have increased their involvement into the realm of finance in the era of financialisation either as debtors (particularly through credit for mortgage purposes, which is more linked with the long-term interest rate) and/or financial assets holders (which is more linked with the short-term interest rates given the more conservative stance of households in their financial applications).

where t is the time period (quarters), PC is the private consumption, UR is the unemployment rate, IR is the inflation rate, SIR is the short-term interest rate, LIR is the long-term interest rate, LI is the labour income, FW is the financial wealth, HW is the housing wealth and α_t is an independent and identically distributed (white noise) disturbance term with null average and constant variance (homoscedastic).

Regarding the influence of each independent variable on private consumption, the unemployment rate and the inflation rate are expected to exert a negative effect, whereas labour income and financial wealth are expected to exert a positive effect. Short-term interest rate, long-term interest rate and housing wealth have an ambiguous effect on private consumption. Thus, the coefficients of these variables are expected to have the following signs:

$$\beta_1 < 0, \beta_2 < 0, \beta_3 \geq 0, \beta_4 \geq 0, \beta_5 > 0, \beta_6 > 0, \beta_7 \geq 0 \quad (2)$$

The unemployment rate affects private consumption negatively because it tends to reflect the business cycle by functioning as a proxy for uncertainty on households' future income levels (Boone *et al.*, 1998; Boone and Girouard, 2002). Malley and Moutos (1996) highlight that the unemployment rate is a good proxy of uncertainty stressing that an increase of unemployment rate implies an increase of uncertainty, which boosts savings and dissuades private consumption in a precautionary context.

The inflation rate is also expected to exert a negative effect on private consumption because it is also used as proxy of uncertainty and of real depreciation of non-indexed financial assets (Boone *et al.*, 1998; Boone and Girouard, 2002).

The effect of the short-term and the long-term interest rates on private consumption is ambiguous. This happens due to both income effect and substitution effect between private consumption and saving decisions by households. The income effect states that an increase in the level of interest rates generates a rise in income received by households' savings, which may lead to a higher level of private consumption due to the thought that they do not need to save as much to maintain their savings level. However, an increase in the level of interest rates also could dissuade private consumption because the returns of savings are now higher, which become more attractive, causing households to save more and spend less.

The labour income positively affects private consumption in line with the Keynesian theory (Keynes, 1936). Thus and following the absolute income theory of Keynes (1936), an increase in labour income implies an increase of private consumption but not by as much as the increase in labour income.

Private consumption is positively affected by financial wealth through five different channels (Ludwig and Sløk, 2002). The first channel is the ‘realised wealth effect’, which means that an increase in the value of financial assets boosts private consumption if households decide to liquidate these financial assets by obtaining the respective gains (Boone and Girouard, 2002). The second channel is the ‘unrealised wealth effect’, according to which an increase in the value of financial assets boosts private consumption because households feel more confident. Households expect that this trend will be maintained in the future, so they spend more now due to their expectations that their income and wealth will be higher when they decide to liquidate their financial assets and obtain the respective gains. The third channel is the ‘liquidity constraint effect’, which implies that an increase in the value of financial assets creates a rise in the value of households’ portfolios, which tends to raise collateral values by allowing more borrowing leverage to finance private consumption. This is the so-called financial accelerator theory developed by Bernanke *et al.* (1996). The fourth channel refers to the ‘stock option value effect’, in which the increase in the value of households’ stock options spurs their consumption levels. Finally, the fifth channel states that private consumption will be higher even by households that do not participate in financial market activities because they are also affected by an increase in the value of financial assets (Romer, 1990). According to Romer (1990), this happens because the evolution of financial assets is a good predictor of uncertainty on households’ future income levels.

The housing wealth has an ambiguous effect on private consumption depending on whether households are house owners or house renters (Ludwig and Sløk, 2002). If households are home owners, three channels explain a positive effect of housing wealth on private consumption. The first channel is also the ‘realised wealth effect’, according to which a rise in house prices boosts private consumption if households decide to refinance or sell the house. The second channel is the ‘unrealised wealth effect’, which means that an increase in house prices boosts private consumption because households feel more confident. Households expect that this trend will continue in the future, so they will spend more now due to their expectations that their income and wealth will be higher when they decide to sell their house in the future. The third channel is the ‘liquidity constraints effect’, which implies that an increase in house prices raises collateral values by allowing more borrowing to finance private consumption. If households are home renters, two channels explain a negative effect of housing wealth on private consumption. The first channel is the ‘budget constraint effect’, according to which a rise in house prices is detrimental for private consumption due to expected rise of rents.⁶ The

⁶ Please note that this ‘budget constraint effect’ could also explain a negative relationship between housing wealth and private consumption for home owners. This is explained by the expected rise of other

second channel is the ‘substitution effect’, which means that a rise in house prices is prejudicial for private consumption because the response of households that are home renters but which are planning to buy a house to this surge in house prices is to buy a smaller house or to lower spending expenditures.

4. DATA AND METHODOLOGY

Quarterly data was collected from the first quarter of 1996 to the last quarter of 2016, which corresponds to the period and frequency for which data for all variables are available. Nonetheless, our sample covers the period when financialisation gained more influence in Portugal (Barradas *et al.*, 2018).

Regarding the definition of each variable and the respective sources, private consumption is proxied by total final consumption expenditures of resident households (at current prices and in millions of euros) collected from the Portuguese National accounts, available at *Instituto Nacional de Estatística*. We also collected the final consumption expenditures of resident households of durable goods (at current prices and in millions of euros) and non-durable goods and services (at current prices and in millions of euros) to assess durable and non-durable private consumption, respectively.

The unemployment rate corresponds to the harmonized unemployment rate for all persons (seasonally adjusted). This variable was collected from FRED Economic Data, available at Federal Reserve Bank of St. Louis.

The proxy to inflation rate used here is the annual percent change (year-on-year) of the consumer price index, which was collected from the Bank of Portugal database.

Short-term and long-term interest rates are the corresponding real interest rates obtained from monetary and financial statistics at the OECD database.

We used the the annual percent change (year-on-year) of net disposable income (at current prices and in millions of euros) divided by gross domestic product (at current prices and in millions of euros) to measure households’ labour income. These variables were extracted from the Portuguese National accounts, available at *Instituto Nacional de Estatística*.

The variable of financial wealth is proxied by the net financial assets, i.e. the difference between financial assets (at current prices and in millions of euros) and financial liabilities (at

housing services (e.g. fuel and power) following a surge in house prices (Boone and Girouard, 2002; Ludwig and Sløk, 2002).

current prices and in millions of euros) of households. Both variables were extracted from the Portuguese financial accounts, available at Bank of Portugal database.

Finally, the housing wealth corresponds to the annual percent change (year-on-year) of real housing price index (at 2010 constant prices) and it was extracted from the analytical house price indicators, available at the OCDE database. We recognised that this is not a stock housing wealth variable, but there is not available information about the non-financial assets owned by Portuguese households. However, this variable has been widely used as a proxy of housing wealth (Boone *et al.*, 1998; Ludwig and Sløk, 2002).

Note that variables of private consumption, durable consumption, non-durable consumption and financial wealth were deflated using the consumer price index from the Bank of Portugal database. In addition, these variables are expressed in annual percent change (year-on-year) in order to avoid multicollinearity problems that would appear if these variables were used in ratios of the gross domestic product or in natural logarithms.

Table A1 in the Appendix exhibits the descriptive statistics of our variables and Table 2 contains the correlation coefficients between them. All of the correlation coefficients are lower than the traditional ceiling of 0.8 in absolute terms, which suggests that there is no multicollinearity between our variables (Studenmund, 2005).

Note that the correlation coefficient between labour income and private consumption is negative and the correlation coefficients between financial and housing wealth and private consumption are both positives. This seems to confirm that two contradictory effects of financialisation on private consumption also characterised the Portuguese economy from the beginning of 1996 to the end of 2016.

Table 2 – The correlation coefficients between variables

	<i>PC</i>	<i>UR</i>	<i>IR</i>	<i>SIR</i>	<i>LIR</i>	<i>LI</i>	<i>FW</i>	<i>HW</i>
<i>PC</i>	1							
<i>UR</i>	-0.602***	1						
<i>IR</i>	-0.015	-0.500***	1					
<i>SIR</i>	0.457***	-0.428***	-0.151	1				
<i>LIR</i>	-0.563***	0.634***	-0.314***	0.037	1			
<i>LI</i>	-0.140	0.360***	-0.249**	-0.197*	0.201*	1		
<i>FW</i>	0.406***	-0.004	-0.377***	0.318***	0.110	0.237**	1	
<i>HW</i>	0.611***	-0.380***	-0.336***	0.197*	-0.321***	0.066	0.380***	1

Note: *** indicates statistical significance at 1% level, ** indicates statistical significance at 5% level and * indicates statistical significance at 10% level

Now and in order to choose the more accurate econometric methodology, we assess the presence of unit roots for each variable by applying the traditional augmented Dickey and Fuller (1979) (ADF) test and the Phillips and Perron (1998) (PP) test (Table 3 and Table 4). These two tests allow us to assess the order of integration of each variable. At the traditional significance levels, private consumption, short-term interest rate and financial wealth are stationary in levels, i.e. they are integrated of order zero, according to the results of both tests. Unemployment rate and long-term interest rate only become stationary in first differences, i.e they are integrated of order one, in accordance with the results of both tests. Inflation rate, labour income and housing wealth are stationary in first differences by the ADF test, but stationary in levels by the PP test. All in all, we have a mixture of variables that are integrated of order zero and one.

Table 3 – P-values of the ADF test

Variable	Level			First Difference		
	<i>Intercept</i>	<i>Trend and Intercept</i>	<i>None</i>	<i>Intercept</i>	<i>Trend and Intercept</i>	<i>None</i>
<i>PC</i>	0.283	0.631	0.067*	0.000	0.000	0.000*
<i>UR</i>	0.634	0.669	0.597*	0.001	0.007	0.000*
<i>IR</i>	0.292	0.136*	0.210	0.000	0.000	0.000*
<i>SIR</i>	0.065	0.120	0.004*	0.000	0.003	0.000*
<i>LIR</i>	0.412	0.545	0.195*	0.000	0.000	0.000*
<i>LI</i>	0.245	0.154*	0.045	0.000	0.001	0.000*
<i>FW</i>	0.101	0.316	0.019*	0.000	0.000	0.000*
<i>HW</i>	0.510	0.868	0.101*	0.007	0.029	0.000*

Note: The lag lengths were selected automatically based on the AIC criteria and * indicates the exogenous variables included in the test according to the AIC criteria

Table 4 – P-values of the PP test

Variable	Level			First Difference		
	<i>Intercept</i>	<i>Trend and Intercept</i>	<i>None</i>	<i>Intercept</i>	<i>Trend and Intercept</i>	<i>None</i>
<i>PC</i>	0.120	0.282	0.023*	0.000	0.000	0.000*
<i>UR</i>	0.716	0.766	0.632*	0.002	0.010	0.000*
<i>IR</i>	0.108	0.078*	0.115	0.000	0.000	0.000*
<i>SIR</i>	0.026	0.099	0.001*	0.000	0.000	0.000*
<i>LIR</i>	0.092	0.168*	0.063	0.000	0.000	0.000*
<i>LI</i>	0.000	0.000*	0.000	0.000	0.000	0.000*
<i>FW</i>	0.005*	0.022	0.001	0.000	0.000	0.000*
<i>HW</i>	0.267	0.616	0.036*	0.000	0.000	0.000*

Note: * indicates the exogenous variables included in the test according to the AIC criteria

Under this circumstance, we will employ the ARDL estimator proposed by Pesaran (1997), Pesaran and Shin (1999) and Pesaran *et al.* (2001). This estimator has three different advantages that justify its suitability in this specific case (Harris and Sollis, 2003). Firstly, this estimator does not require that all variables have the same integration order. Secondly, this estimator is strongly efficient even cases of small and finite samples. Thirdly, this estimator produces unbiased and consistent estimates.

According to this model, the dependent variable is explained by the lagged values of itself as well as the lagged and contemporaneous values of the independent variables. This econometric methodology involves four steps. Firstly, we need to analyse the number of the lags to be include in our estimation according to the information criteria. Secondly, we assess if there a cointegration relationship between our variables using the bounds test procedure proposed by Pesaran *et al.* (2001). Thirdly, we examine if our econometric model suffers from any econometric problem by conducting a set of diagnostic tests (autocorrelation, functional form, normality, heteroscedasticity and stability). Fourthly, we present both long-term and short-term estimates for our private consumption equation.

5. EMPIRICAL RESULTS

This Section contains our estimates for Portuguese private consumption. We present the estimates not only for the total private consumption but also for non-durable and durable private consumption.⁷ Our estimates will be produced taking into account four lags, for two different reasons. Firstly, this is the number of lags indicated for quarterly data (Pesaran *et al.*, 2001). Secondly, this is in accordance with some information criteria, and more specifically with LR and AIC criteria (Table 5).⁸

⁷ Please note that the consumption of services is included in the non-durable private consumption. In addition, estimates for durable and non-durable private consumption can also be obtained using the ARDL estimator because neither of these two variables is integrated of order two. Effectively and according to the ADF test, durable private consumption is integrated of order zero and non-durable consumption is integrated of order one. Following the PP test, durable and non-durable private consumption are both integrated of order zero. Results available upon request.

⁸ E-views software (9.5 version) was used to produce our results. Note that the software automatically defines the number of lags to be incorporated in each variable up to the defined limit of four.

Table 5 – Values of the information criteria by lag

Private Consumption	Lag	LR	FPE	AIC	SC	HQ
Total	0	n.a.	2.43e-28	-40.9	-40.6	-40.8
	1	1008.5	8.20e-34	-53.5	-51.3*	-52.6
	2	156.4	3.55e-34*	-54.4*	-50.3	-52.7*
	3	60.5	6.60e-34	-53.9	-47.9	-51.5
	4	91.6*	5.94e-34	-54.2	-46.4	-51.1
Non-Durable	0	n.a.	1.13e-28	-41.6	-41.4	-41.6
	1	1013.6	3.56e-34	-54.3	-52.2*	-53.5
	2	151.4	1.67e-34*	-55.1*	-51.1	-53.5*
	3	63.5	2.93e-34	-54.7	-48.7	-52.4
	4	90.9*	2.68e-34	-55.0	-47.2	-51.9
Durable	0	n.a.	4.91e-27	-37.9	-37.6	-37.8
	1	988.2	2.21e-32	-50.2	-48.1*	-49.3
	2	152.1	1.02e-32*	-51.0	-47.0	-49.4*
	3	61.0	1.89e-32	-50.5	-44.6	-48.1
	4	105.9*	1.26e-32	-51.2*	-43.3	-48.0

Note: * indicates the optimal lag order selected by the respective criteria

Then, we apply the bounds test procedure to conclude regarding the existence of cointegration between our variables (Table 6). The computed F-statistics are above the upper bound critical values, which indicates that the null hypothesis of no cointegration can be rejected. We therefore confirm that our variables are cointegrated.

Table 6 – Bounds test for cointegration analysis

Private Consumption	F-statistic	Critical Value	Lower Bound Value	Upper Bound Value
Total	12.293	1%	2.73	3.9
		2,5%	2.43	3.51
		5%	2.17	3.21
		10%	1.92	2.89
Non-Durable	9.072	1%	2.73	3.9
		2,5%	2.43	3.51
		5%	2.17	3.21
		10%	1.92	2.89
Durable	10.441	1%	2.73	3.9
		2,5%	2.43	3.51
		5%	2.17	3.21
		10%	1.92	2.89

Table 7 – Diagnostic tests for ARDL estimates

Private Consumption	Test	F-Statistic	<i>P-value</i>
Total	Autocorrelation	0.056	0.813
	Ramsey's RESET	2.507	0.119
	Normality	3.449	0.178
	Heterocedasticity	0.644	0.872
Non-Durable	Autocorrelation	0.190	0.665
	Ramsey's RESET	2.903	0.063
	Normality	1.815	0.404
	Heterocedasticity	0.427	0.981
Durable	Autocorrelation	0.139	0.711
	Ramsey's RESET	0.326	0.746
	Normality	9.241	0.010
	Heterocedasticity	0.775	0.745

Note: Autocorrelation tests were conducted with 1 lag and Ramsey's RESET tests were performed with 1 fitted term, albeit results do not change if we had used more lags and more fitted terms, respectively

Next we conducted four diagnostic tests (Table 7). According to the Breusch-Godfrey serial correlation LM test, we cannot reject the null hypothesis of no serial correlation. Using the Ramsey's RESET test, we do not reject the null hypothesis of no misspecification, confirming that our models are well specified in their functional forms. The null hypothesis that residuals are normal and homoscedastic cannot be rejected by the Jarque-Bera test and the Breusch-Pagan-Godfrey test, respectively. The only exception pertains to the model of durable private consumption since the null hypothesis that residuals are normal is rejected. However, this is not considered very serious because the central limit theorem guarantees by itself the normality of residuals as our sample has more than thirty observations. Moreover, Hendry and Juselius (2000) recognise that the normality assumption is seldom satisfied in economic applications, which does not invalidate the global robustness of models or the statistical inference. We also perform the cumulative sum of recursive residuals (CUSUM) test and the cumulative sum of squares of recursive residuals (CUSUMSQ) test (Figure A9 and Figure A10), concluding that our coefficients are stable and that there are no significant structural breaks in our sample.⁹ All of these tests confirm that our models do not suffer from any serious econometric problem and therefore we can proceed with the presentation of our long-term estimates (Table 8) and short-term estimates (Table 9, Table 10 and Table 11).

⁹ The CUSUM and CUSUMSQ tests are presented only for total private consumption. However, we obtained the same conclusion for non-durable and durable private consumption. Plots available upon request.

Table 8 – The long-term estimates of private consumption (1996-2016)

Variable	Total	Non-Durable	Durable
β_0	0.036*** (0.012) [2.955]	0.034*** (0.009) [3.870]	-0.011 (0.053) [-0.209]
UR_t	-0.061 (0.107) [-0.568]	-0.069 (0.078) [-0.876]	0.933** (0.448) [2.082]
IR_t	-0.037 (0.185) [-0.201]	0.149 (0.134) [1.113]	-1.085 (0.829) [-1.310]
SIR_t	0.660*** (0.145) [4.560]	0.615*** (0.104) [5.933]	1.892*** (0.576) [3.284]
LIR_t	-0.633*** (0.104) [-6.108]	-0.541*** (0.073) [-7.408]	-2.250*** (0.401) [-5.616]
LI_t	0.418** (0.175) [2.389]	0.283** (0.122) [2.310]	1.711** (0.741) [2.308]
FW_t	0.262*** (0.048) [5.447]	0.083*** (0.027) [3.090]	1.374*** (0.195) [7.039]
HW_t	0.255* (0.057) [4.517]	0.224*** (0.040) [5.602]	1.238*** (0.250) [4.958]

Note: Standard errors in (), t-statistics in [], *** indicates statistical significance at 1% level, ** indicates statistical significance at 5% level and * indicates statistical significance at 10% level

In the long-term and regarding total private consumption, all variables are statistically significant at the conventional significance levels with the exception of unemployment rate and inflation rate, which present the expected negative coefficients. All the other variables that are statistically significant have the expected signs, confirming the previous empirical findings that private consumption is positively affected by labour income, financial wealth and housing wealth (Boone *et al.*, 1998; Ludvigson and Steindel, 1999; Davis and Palumbo, 2001; Edison and Sløk, 2001; Mehra, 2001; Boone and Girouard, 2002; Ludwig and Sløk, 2002; Castro, 2007; Farinha, 2008; Sousa, 2008, 2009; Slacalek, 2009; Onaran *et al.*, 2011; Barrel *et al.*,

2015; Barradas, 2017a).¹⁰ Our results are also in line with the absolute income theory of Keynes (1936) given that the coefficient of labour income is less than one. Interest rates present mixed results in a context where short-term interest rates exert a positive effect on private consumption but long-term interest rates exert a negative one. The most counterintuitive effect pertains to short-term interest rates, which positively influence private consumption, which can be explained by three different channels. Firstly, a rise of interest rates accelerates private consumption through the aforementioned income effect of savings on private consumption. Secondly, a rise of interest rates boosts private consumption as households see this increase as a period of economic growth that favours by itself an increase of consumption expenditures. Thirdly, a rise of interest rates exacerbates private consumption taking into account the fears that this trend could persist in the future making the credit more costly, so households anticipate their consumption expenditures. A positive effect of interest rates on private consumption was also finding by Boone *et al.* (1998) for Italy, by Boone and Girouard (2002) for France and by Barradas (2017a) for the European Union countries as a whole.

With regard to non-durable private consumption, results do not change radically. Effectively, variables that are statistically significant in the case of total private consumption are exactly the same in the case of non-durable private consumption and they exert the same effects. This is not too surprising given that the non-durable private consumption represents around the majority of consumption expenditures by the Portuguese households in the last several years.¹¹

Finally and with regard to durable private consumption, the results also do not show a strong change. The only exception pertains to unemployment rate, which becomes statistically significant by exerting an unexpected positive influence. This suggests that an increase in the unemployment rate implies an acceleration of durable private consumption, which can be attributed to the existence of unemployment benefits that function as automatic stabilisers, the utilisation of savings, and rising debt by households. This happens due to the aforementioned ‘ratchet effect’ (Duesenberry, 1949).

In the short-term, three important conclusions deserve our attention. Firstly, total private consumption is strongly persistent, which is also true for non-durable and durable private consumption. This consumption inertia or sluggishness is a well-recognised empirical fact in the literature due to consumption habits, adjustment costs of changing consumption, unconsciousness and inattention of households (Sørensen and Whitta-Jacobsen, 2005; Sommer,

¹⁰ Note that long-term and short-term results do not considerably change if we use financial assets instead of net financial assets (financial assets less financial liabilities) as a proxy to households’ financial wealth.

¹¹ According to *Instituto Nacional de Estatística*, the non-durable consumption represents around 90% of the total private consumption in Portugal. Moreover, the non-durable consumption has exhibited a slightly increasing importance in the last years due to the increase of consumption expenditures on several services (e.g. health and education) and the growing satisfaction of basic needs by the Portuguese households.

2007; Slacalek, 2009; Sousa, 2009; Barrel *et al.*, 2015). Secondly, coefficients of the error correction terms are negatives, lie between 0 and -2 and are strongly significant. This confirms the stability of our models and their convergence to the long-term equilibrium. The magnitude of the respective coefficients implies that nearly 85.6%, 85.9% and 99.3% of any disequilibrium of the long-term are corrected within one-quarter. Thirdly, our models describe reasonably well the behaviour of the Portuguese private consumption given the high values of R-squared and Adjusted R-squared, respectively.

Table 9 – The short-term estimates of total private consumption (1996-2016)

Variable	Coefficient	Standard Error	T-statistic
ΔPC_{t-1}	0.244***	0.072	3.405
ΔPC_{t-2}	0.405***	0.072	5.609
ΔPC_{t-3}	0.184***	0.069	2.684
ΔUR_t	0.377	0.245	1.540
ΔSIR_t	1.051***	0.150	6.955
ΔLI_t	0.024	0.069	0.342
ΔLI_{t-1}	-0.454***	0.074	-6.130
ΔLI_{t-2}	-0.182**	0.076	-2.390
ΔFW_t	0.045	0.028	1.634
ΔFW_{t-1}	-0.106***	0.033	-3.222
ΔFW_{t-2}	-0.099***	0.031	-3.215
ΔFW_{t-3}	-0.116***	0.031	-3.779
ΔHW_t	0.004	0.061	0.071
ΔHW_{t-1}	-0.210***	0.071	-2.942
ΔECT_{t-1}	-0.856***	0.076	-11.232
<i>R-squared</i> = 0.760		<i>Adjusted R-squared</i> = 0.708	

Note: Δ is the operator of the first differences, *** indicates statistical significance at 1% level, ** indicates statistical significance at 5% level and * indicates statistical significance at 1% level

Table 10 – The short-term estimates of non-durable private consumption (1996-2016)

Variable	Coefficient	Standard Error	T-statistic
ΔNDC_{t-1}	0.292***	0.071	4.139
ΔNDC_{t-2}	0.361***	0.073	4.941
ΔNDC_{t-3}	0.218***	0.072	3.049
ΔUR_t	0.295	0.180	1.638
ΔSIR_t	0.884***	0.126	7.043
ΔLI_t	-0.104**	0.049	-2.114
ΔLI_{t-1}	-0.348***	0.058	-6.030
ΔLI_{t-2}	-0.124**	0.059	-2.098
ΔFW_t	0.027	0.019	1.414
ΔHW_t	0.042	0.042	0.994
ΔHW_{t-1}	-0.132***	0.049	-2.679
ΔHW_{t-2}	-0.103*	0.052	-1.958
ΔECT_{t-1}	-0.859***	0.089	-9.629
<i>R-squared</i> = 0.735		<i>Adjusted R-squared</i> = 0.688	

Note: Δ is the operator of the first differences, *** indicates statistical significance at 1% level, ** indicates statistical significance at 5% level and * indicates statistical significance at 1% level

Table 11 – The short-term estimates of durable private consumption (1996-2016)

Variable	Coefficient	Standard Error	T-statistic
ΔDC_{t-1}	0.339***	0.094	3.627
ΔDC_{t-2}	0.341***	0.070	4.811
ΔDC_{t-3}	0.276***	0.067	4.106
ΔLIR_t	-0.793	0.574	0.173
ΔLI_t	0.593	0.366	1.622
ΔLI_{t-1}	-1.790***	0.378	-4.733
ΔLI_{t-2}	-1.345***	0.377	-3.569
ΔFW_t	0.247*	0.139	1.777
ΔFW_{t-1}	-0.828***	0.182	-4.562
ΔFW_{t-2}	-0.605***	0.156	-3.874
ΔFW_{t-3}	-0.874***	0.154	-5.675
ΔHW_t	-0.157	0.309	-0.510
ΔHW_{t-1}	-1.135**	0.353	-3.223
ΔHW_{t-2}	0.119	0.380	0.314
ΔHW_{t-3}	-0.846**	0.375	-2.258
ΔECT_{t-1}	-0.993***	0.096	-10.363
<i>R-squared</i> = 0.769		<i>Adjusted R-squared</i> = 0.715	

Note: Δ is the operator of the first differences, *** indicates statistical significance at 1% level, ** indicates statistical significance at 5% level and * indicates statistical significance at 1% level

Finally, we present the economic significance of our statistically significant long-term estimates (McCloskey and Ziliak, 1996; Ziliak and McCloskey, 2004). This allows us to identify the main drivers and constrainers of the Portuguese private consumption since 1996 and assess the role of the two contradictory channels linked to financialisation during that time (Table 12). As the Great Recession hit the Portuguese economy in a quite severely way (Figure A1 to Figure A8 in the Appendix), this analysis is carried out for pre-crisis, crisis and post-crisis periods respectively. The dating of different periods was performed given the evolution of total private consumption (Figure A1 in the Appendix). For all three periods, we use the same long-term coefficients, taking into account that we have already excluded the existence of significant structural breaks (Figure A9 and Figure A10 in the Appendix). For simplicity and taking into account that the determinants of total private consumption and both non-durable and durable private consumption are not so different, this analysis only relapses on total private consumption.

Table 12 – Economic significance of our long-term estimates for total private consumption

Period	Variable	Long-term Coefficient	Actual Cumulative Change	Economic Effect
Pre-Crisis Period (1996-2008)	SIR_t	0.660	-0.397	-0.262
	LIR_t	-0.633	-0.495	0.313
	LI_t	0.418	-0.088	-0.037
	FW_t	0.262	0.264	0.069
	HW_t	0.255	-0.086	-0.022
Crisis Period (2009-2013)	SIR_t	0.660	-0.984	-0.649
	LIR_t	-0.633	0.187	-0.118
	LI_t	0.418	0.044	0.018
	FW_t	0.262	0.096	0.025
	HW_t	0.255	-0.153	-0.039
Post-Crisis Period (2014-2016)	SIR_t	0.660	-2.793	-1.843
	LIR_t	-0.633	-0.494	0.313
	LI_t	0.418	0.0003	0.0001
	FW_t	0.262	0.079	0.021
	HW_t	0.255	0.113	0.029
Full Period (1996-2016)	SIR_t	0.660	-1.209	-0.798
	LIR_t	-0.633	-0.621	0.393
	LI_t	0.418	-0.050	-0.021
	FW_t	0.262	0.494	0.129
	HW_t	0.255	-0.113	-0.029

Note: The actual cumulative change corresponds to the annual percent change (year-on-year) of the correspondent variable (in levels) during the respective period. The economic effect is the multiplication of the long-term coefficient by the actual cumulative change

In the period until the crisis, we conclude that the long-term interest rates and financial wealth were the main drivers of the total private consumption. In fact, a decrease of the long-term interest rates and an increase of financial wealth favoured an acceleration of the total private consumption by around 31.3 and 6.9 percent, respectively. Labour income and housing wealth had a slightly negative effect, contributing to a drop in the private consumption by about 3.7 and 2.2 percent, respectively. Accordingly, the global net effect of financialisation on total private consumption was considerably positive in the pre-crisis period.

During the crisis, labour income and financial wealth were the single drivers of the total private consumption. Effectively, total private consumption would have been lower by about 1.8 and 2.5 percent if there had not been a rise in labour income and financial wealth, respectively. The remaining variables constrained the evolution of the total private consumption. The fall of the short-term interest rates and housing wealth and the rise of the long-term interest rates implied a deceleration of the total private consumption by around 64.9, 3.9 and 11.8 percent, respectively. Against this backdrop, the global net effect of financialisation on total private consumption was marginally positive during the crisis because the beneficial effect of the labour income and financial wealth have compensated for the prejudicial effects of the housing wealth.

After the crisis, the effects of each variable on total private consumption are quite similar to the pre-crisis period. The only exception is related to housing wealth, which begins to also represent a driver of the total private consumption, like long-term interest rates, labour income and financial wealth. During that time, financialisation had a positive effect on total private consumption due to both income and wealth effects. In fact, total private consumption would have been lower by about 0.01, 2.1 and 2.9 percent if had there not been a rise in the labour income, financial wealth and housing wealth, respectively.

Taking into account the full period, we conclude that long-term interest rates were the main driver of the total private consumption, whilst the short-term interest rates had the worst impact. All in all, interest rates favoured a deceleration of the total private consumption because the positive effect of long-term interest rates was clearly insufficient to counterbalance the deleterious effect caused by short-term interest rates. However, financialisation boosted the total private consumption from 1996 to 2016. The increase of financial wealth delineated an acceleration of total private consumption of around 12.9 percent, respectively, more than compensating for the harmful effect of the fall in the labour income and housing wealth, which

only contributed to a deceleration of total private consumption by about 2.1 and 2.9 percent, respectively.

To sum up, we confirm that financialisation cannot be dissociated from the behaviour of the Portuguese private consumption in the last several years; instead it represents an important driver of its evolution, particularly in the pre-crisis and post-crisis periods.

6. CONCLUSION

This paper aimed to evaluate the relationship between financialisation and Portuguese private consumption by performing a time series econometric analysis from the first quarter of 1996 to the last quarter of 2016.

From a theoretical point of view and follow the permanent income and life-cycle theories, private consumption essentially depends on households' permanent income, i.e. the current and expected future labour income plus their stock of wealth (Friedman, 1957; Modigliani and Brumberg, 1954; Ando and Modigliani, 1963). Against this backdrop, the post-Keynesian literature stresses that financialisation exerts two contradictory effects on private consumption (Stockhammer, 2009a; Onaran *et al.*, 2011; and Hein, 2012). A negative effect occurs, due to the fall of labour income, and a positive effect arises due to the rise of financial and housing wealth. These authors also emphasise that the global net effect of financialisation tends to be positive because the harmful income effect is more than compensated for by the beneficial wealth effect.

Accordingly, we estimated a private consumption equation using four control variables (unemployment rate, inflation rate, short-term interest rate and long-term interest rate) and three variables linked to the aforementioned contradictory effects of financialisation (labour income, financial wealth and housing wealth). We have a mixture of variables that are integrated of order zero and one, which implied the utilization of the ARDL estimator.

Our findings confirm that the Portuguese private consumption is strongly persistent and that labour income, financial wealth and housing wealth are positive determinants of Portuguese private consumption, in accordance with other empirical studies around this issue (Boone *et al.*, 1998; Ludvigson and Steindel, 1999; Davis and Palumbo, 2001; Edison and Sløk, 2001; Mehra, 2001; Boone and Girouard, 2002; Ludwig and Sløk, 2002; Sørensen and Whitta-Jacobsen, 2005; Castro, 2007; Farinha, 2008; Sousa, 2008, 2009; Slacalek, 2009; Onaran *et al.*, 2011; Barrell *et al.*, 2015; Barradas, 2017a). Our findings also confirm that financialisation cannot be dissociated from the evolution of Portuguese private consumption in the last several years,

albeit its effects differ slightly across time. In the pre-crisis period, financialisation spurred Portuguese private consumption because the positive effect of financial wealth suppressed the negative effects of the labour income and housing wealth. During the crisis period, financialisation also boosted the Portuguese private consumption because the positive effects of the labour income and financial wealth counterweighed the negative effect of housing wealth. After the crisis, financialisation again boosted again Portuguese private consumption, due to the beneficial effects of labour income, financial wealth and housing wealth. Over the full period, financialisation contributed to an acceleration of the Portuguese private consumption, particularly due the rise of financial wealth.

Further research on this topic should focus on the empirical assessment of the causes of the increase of households' financial and housing wealth in the last several years, as well as on the respective consequences related with that increase, namely at the level of households' indebtedness.

7. REFERENCES

- Ando, A. and Modigliani, F. 1963. 'The "Life Cycle" Hypothesis of Saving: Aggregate Implications and Tests'. *American Economic Review*, 53 (1): 55-84.
- Alvarez, I. 2015. 'Financialization, non-financial corporations and income inequality: the case of France'. *Socio-Economic Review*, 13 (3): 449-475.
- Barradas, R. 2016. 'Evolution of the Financial Sector – Three Different Stages: Repression, Development and Financialisation'. In Gomes, O. and Martins, H. F. (eds.). 2016. *Advances in Applied Business Research: the L.A.B.S. Initiative*, New York: Nova Science Publishers.
- Barradas, R. 2017a. 'Drivers of Private Consumption in the Era of Financialisation: New Evidence for the European Union Countries. *Working Paper n° 2017/04*, Dinâmia'CET-IUL, ISCTE – Instituto Universitário de Lisboa, Lisboa.
- Barradas, R. 2017b. 'Financialisation and the Fall in the Labour Share: A Panel Data Econometric Analysis for the European Union Countries. *Working Paper n° 2017/02*, Dinâmia'CET-IUL, ISCTE – Instituto Universitário de Lisboa, Lisboa.
- Barradas, R. and Lagoa, S. 2017. 'Functional Income Distribution in Portugal: The Role of Financialisation and Other Related Determinants'. *Society and Economy*. 39 (2): 183-212.
- Barradas, R.; Lagoa, S.; Leão, E.; and Mamede, R. P. 2018. 'Financialisation in the European Periphery and the Sovereign Debt Crisis: The Portuguese Case'. *Journal of Economic Issues*. Forthcoming.
- Barrel, R.; Costantini, M. and Meco, I. 2015. 'Housing Wealth, financial wealth, and consumption: New Evidence for Italy and the UK'. *International Review of Financial Analysis*, 42: 316-323.
- Bernanke, B., Gertler, M. and Gilchrist, S., 1996. 'The Financial Accelerator and the Flight to Quality'. *The Review of Economics and Statistics*, 78 (1), 1-15.
- Boone, L.; Giorno, C.; and Richardson, P. 1998. 'Stock Market Fluctuations AND Consumption Behaviour: Some Recent Evidence'. *OECD Economics Department Working Paper N° 208*, Paris.
- Boone, L. and Girouard, N. 2002. 'The Stock Market, The Housing Market and Consumer Behaviour'. *OECD Economic Studies N° 35*, Paris.
- Brooks, C. 2009. *Introductory Econometrics for Finance*. 2nd Edition. New York: Cambridge University Press.

- Castro, G. L. 2007. 'The Wealth Effect on Consumption in the Portuguese Economy'. *Economic Bulletin Winter*, Lisbon: Bank of Portugal.
- Church, K. P.; Smith, P. N. and Wallis, K. F. 1995. 'Econometric Evaluation of Consumers' Expenditure Equations'. *Oxford Review of Economic Policy*, 10 (2): 71-85.
- Davis, M. A. and Palumbo, M. G. 2001. 'A Primer on the Economics and Time Series Econometrics of Wealth Effects'. *Finance and Economics Discussion Series Working Paper N° 09*, Washington.
- Dickey, D. A. and Fuller, W. A. 1979. 'Distribution of the Estimators for Autoregressive Time Series with a Unit Root'. *Journal of the American Statistical Association*. 74 (366): 427-431.
- Duesenberry, J. S. 1949. *'Income, Saving and the Theory of Consumer Behaviour'*. Cambridge: Harvard University Press.
- Dünhaupt, P. 2013a. 'Determinants of Functional Income Distribution – Theory and Empirical Evidence'. *Working Paper N° 18*, Global Labour University.
- Dünhaupt, P. 2013b. 'The Effect of Financialisation on Labor's Share of Income'. *Working Paper N° 17/2013*, Berlin: Institute for International Political Economy.
- Edison, H. and Sløk, T. 2001. 'Wealth Effects and the New Economy'. *IMF Working Paper N° 77*, Washington.
- European Commission 2007. *Employment in Europe 2007*. Brussels: Directorate-General for Employment, Social Affairs and Equal Opportunities.
- Farinha, L. 2008. 'Wealth Effects on Consumption in Portugal: A Microeconomic Approach'. *Financial Stability Report*. Lisbon: Bank of Portugal.
- Friedman, M. 1957. *'A Theory of the Consumption Function'*. Princeton: Princeton University Press.
- Guerriero, M. and Sen, K. 2012. 'What Determines the Share of Labour in National Income? A Cross-Country Analysis'. *Discussion Paper N° 6643*, Germany: The Institute for the Study of Labor.
- Harris, R. and Sollis, R. 2003. *Applied Time Series Modelling and Forecasting*. West Sussex: Wiley.
- Hein, E. 2012. *'The Macroeconomics of Finance-dominated Capitalism – and its Crisis'*. Cheltenham: Edward Elgar Publishing Limited.
- Hein, E. and Detzer, D. 2014. 'Finance – Dominated Capitalism and Income Distribution: A Kaleckian Perspective on The Case of Germany'. *FESSUD Working Paper Series N° 62*, University of Leeds: FESSUD Project.

- Hein, E. and Dodig, N. 2015. 'Finance-dominated capitalism, distribution, growth and crisis – long-run tendencies'. In Hein, E; Detzer, D. and Dodig, N. (eds.). *The Demise of Finance-dominated Capitalism: Explaining the Financial and Economic Crises*, Cheltenham: Edward Elgar Publishing Limited.
- Keynes, J. M. 1936. *The General Theory of Employment, Interest and Money*. London: Macmillan.
- Köhler, K.; Guschanski, A.; Stockhammer, E. 2016. 'How does financialization affect functional income distribution? A theoretical clarification and empirical assessment'. *Socio-Economic Review*, forthcoming.
- Kristal, T. 2010. 'Good times, bad times. Postwar Labor's Share of National Income in Capitalist Democracies'. *American Sociological Review*, 75 (5): 729-763.
- Kus, B. 2012. 'Financialisation and Income Inequality in OECD Nations: 1995-2007'. *The Economic and Social Review*, 43(4): 477-495.
- Kutner, M. H.; Nachtsheim, C. J.; Neter, J.; and Li, W. 2004. *Applied Linear Statistical Models*. 5th Edition. New York: Irwin/McGraw-Hill.
- Lapavistas, C., 2011. 'Theorizing financialization'. *Work, Employment and Society*, 25 (4), 611-626.
- Lin, K. and Tomaskovic-Devey, D. 2013. 'Financialisation and US Income Inequality, 1970 – 2008'. *American Journal of Sociology*, 118 (5): 1284-1329.
- Ludvigson, S. and Steindel, C. 1999. 'How Important Is the Stock Market Effect on Consumption?'. *Economic Policy Review*, 1999 (July): 29-51.
- Ludwig, A. and Sløk, T. 2002. 'The Impact of Changes in Stock Prices and House Prices on Consumption in OECD Countries'. *IMF Working Paper N° 1*, Washington.
- Malley, J. and Moutos, T. 1996. 'Unemployment and Consumption'. *Oxford Economic Papers*, 48 (4): 584-600.
- McCloskey, D. N. and Ziliak, S. T. 1996. 'The Standard Error of Regressions'. *Journal of Economic Literature*, 34 (1): 97-114.
- Mehra, Y. P. 2001. 'The Wealth Effect in Empirical Life-Cycle Aggregate Consumption Equations'. *Economic Quarterly*, 87 (2): 45-68.
- Michell, J. 2014. 'Factors Generating and Transmitting The Financial Crisis: Functional Distribution of Income'. *FESSUD Working Paper Series N° 41*, University of Leeds: FESSUD Project.
- Modigliani, F. and Brumberg, R. 1954. 'Utility Analysis and The Consumption Function: An Interpretation of Cross-Section Data'. In Kurihara, K. K. (ed.). *Post Keynesian Economics*, New Brunswick: Rutgers University Press.

- Onaran, Ö.; Stockhammer, E.; and Grafl, L. 2011. 'Financialisation, income distribution and aggregate demand in the USA'. *Cambridge Journal of Economics*, 35 (1): 637-661.
- Peralta, I. A. and Escalonilla, F. L. 2011. 'Financiarización, Acumulación de Capital y Crecimiento Salarial en la UE-15'. *Investigación Económica*, 70 (276): 125-162.
- Pesaran, M. H. 1997. 'The Role of Economic Theory in Modelling the Long Run'. *Economic Journal*. 107 (1): 178-191.
- Pesaran, M. H. and Shin, Y. 1999. 'An Autoregressive Distributed-Lag Modelling Approach to Cointegration Analysis'. In Strøm, S. (ed.): *Econometrics and Economic Theory in The Twentieth Century: The Ragnar Frisch Centennial Symposium*. Cambridge: Cambridge University Press.
- Pesaran, M. H.; Shin, Y.; and Smith, R. J. 2001. 'Bounds Testing Approaches to The Analysis of Level Relationships'. *Journal of Applied Econometrics*. 16 (1): 289-326.
- Phillips, P. C. B. and Perron, P. 1998. 'Testing for a Unit Root in Time Series Regression'. *Biometrika*. 75 (2): 335-346.
- Romer, C. D. 1990. 'The Great Crash and the Onset of the Great Depression'. *The Quarterly Journal of Economics*, 105 (3): 597-624.
- Sawyer, M. 2013. 'What Is Financialization?' *International Journal of Political Economy*, 42(4): 5-18.
- Slacalek, J. 2009. 'What Drives Personal Consumption? The Role of Housing and Financial Wealth'. *ECB Working Paper Series N° 1117*, Frankfurt am Main.
- Sommer, M. 2007. 'Habit Formation and Aggregate Consumption Dynamics'. *The B.E. Journal of Macroeconomics*, 7 (1): 1-25.
- Sørensen, P. B. and Whitta-Jacobsen, H. J. 2005. 'Introducing Advanced Macroeconomics: Growth & Business Cycles'. Maidenhead: McGraw-Hill.
- Sousa, R. M. 2008. 'Financial Wealth, Housing Wealth, and Consumption'. *International Research Journal of Finance and Economics*, 19: 167-191.
- Sousa, R. M. 2009. 'Wealth Effects on Consumption: Evidence from the Euro Area'. *ECB Working Paper Series N° 1050*, Frankfurt am Main.
- Stockhammer, E. 2009a. 'The finance-dominated accumulation regime, income distribution and the present crisis'. *Papeles de Europa*, 19 (2009): 58-81.
- Stockhammer, E. 2009b. 'Determinants of Functional Income Distribution in OECD Countries'. *IMK Studies*, Düsseldorf: Macroeconomic Policy Institute IMK at Hans Boeckler Foundation.
- Stockhammer, E. 2010. 'Financialization and the Global Economy'. *Political Economy Research Institute Working Paper N° 240*. University of Massachusetts Amherst.

- Stockhammer, E. 2017. ‘Determinants of the Wage Share: A Panel Data Analysis of Advanced and Developing Economies’. *British Journal of Industrial Relations*, 55 (1): 3-33.
- Studenmund, A. H. 2005. *Using Econometrics: A Practical Guide*. 5th Edition, Boston: Addison Wesley Pearson.
- Tomaskovic-Devey, D.; Lin, K. and Meyers, N. 2015. ‘Did financialization reduce economic growth?’. *Socio-Economic Review*, 13(3): 525-548.
- Van der Zwan, N. 2014. ‘Making sense of financialisation’. *Socio-Economic Review*, 12 (1): 99-129.
- Vercelli, A. 2013. ‘Financialization in a Long-Run Perspective’. *International Journal of Political Economy*, 42(4): 19-46.
- Wooldridge, J. M. 2003. *Introductory Econometrics: A Modern Approach*. 2nd Edition. Ohio: Thomson South-Western.
- Ziliak, S. T. and McCloskey, D. N. 2004. ‘Size matters: the standard error of regressions in the American Economic Review’. *The Journal of Socio-Economics*, 33 (5): 527-54.

8. APPENDIX

Table A1 – The descriptive statistics for each variable

	<i>PC</i>	<i>UR</i>	<i>IR</i>	<i>SIR</i>	<i>LIR</i>	<i>LI</i>	<i>FW</i>	<i>HW</i>
Mean	0.015	0.095	0.022	0.005	0.0312	-0.003	0.0213	-0.006
Median	0.025	0.089	0.025	0.001	0.025	-0.004	0.028	-0.009
Maximum	0.063	0.174	0.051	0.057	0.101	0.044	0.119	0.072
Minimum	-0.083	0.049	-0.017	-0.029	-0.003	-0.036	-0.106	-0.098
Standard Deviation	0.033	0.034	0.014	0.017	0.022	0.014	0.045	0.042
Skewness	-1.216	0.556	-0.635	0.610	0.968	0.522	-0.524	-0.246
Kurtosis	3.839	2.379	2.782	3.055	3.503	3.922	3.250	2.640
Observations	84	84	84	84	84	84	84	84

Figure A1 – Total private consumption (annual percent change, year-on-year)

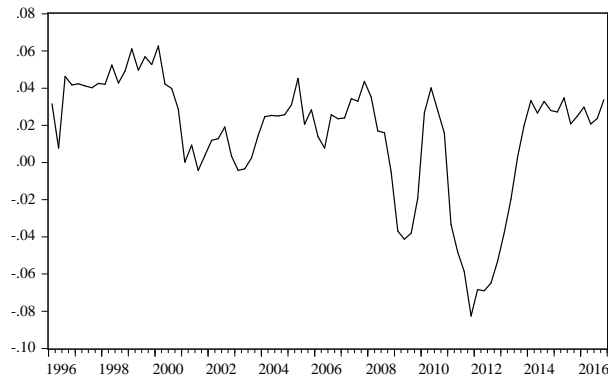


Figure A2 – Unemployment rate (%)

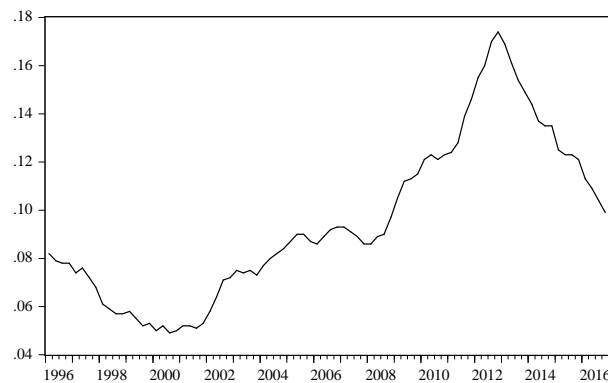


Figure A3 – Inflation rate (annual percent change, year-on-year)

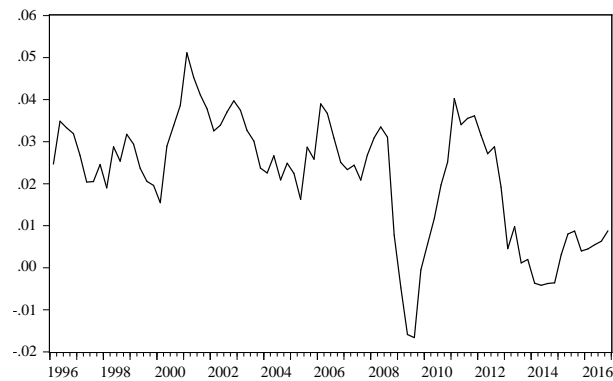


Figure A4 – Short-term interest rate (%)

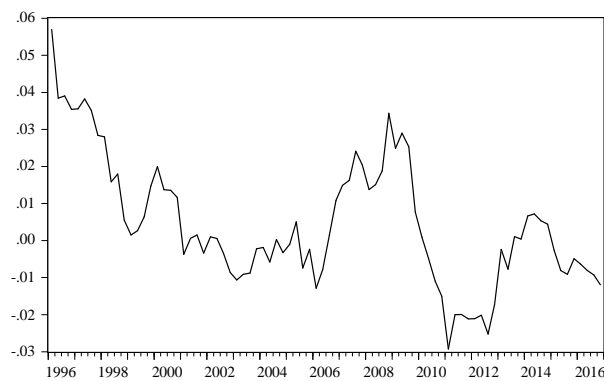


Figure A5 – Long-term interest rate (%)

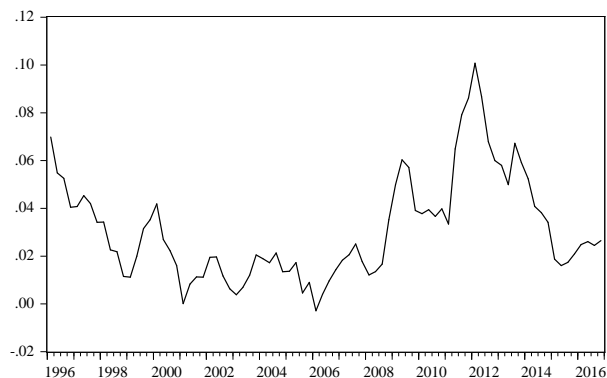


Figure A6 – Households' labour income (annual percent change, year-on-year)

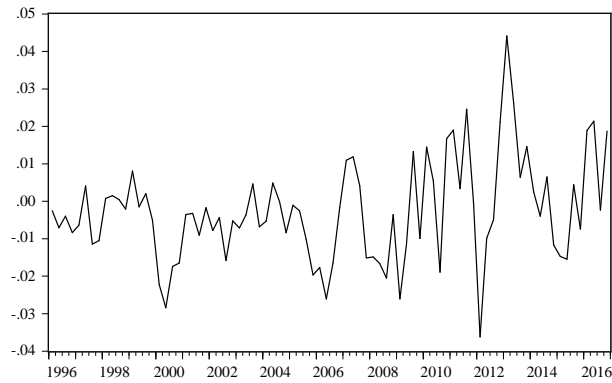


Figure A7 – Households' financial wealth (annual percent change, year-on-year)

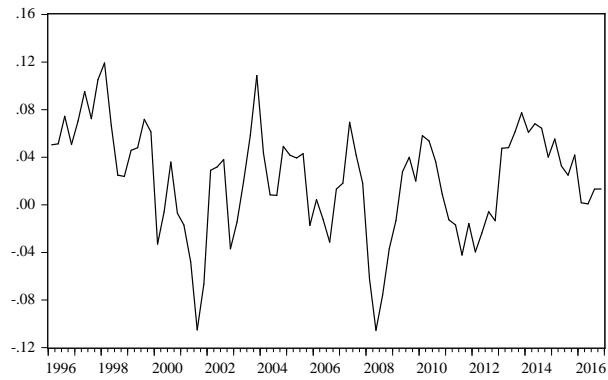


Figure A8 – Households' housing wealth (annual percent change, year-on-year)

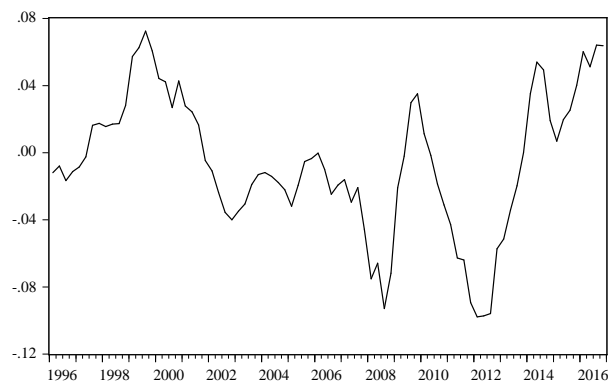


Figure A9 – The CUSUM test (the straight lines represent critical bounds at 5% significance levels)

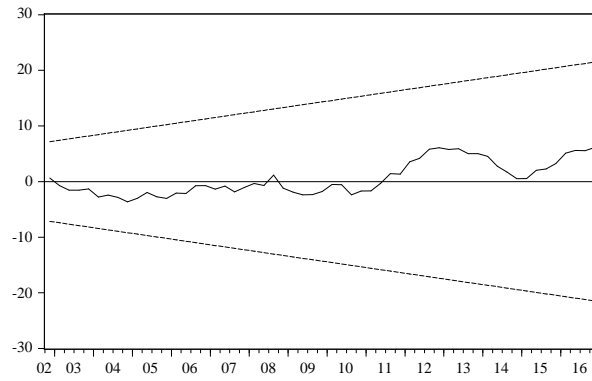


Figure A10 – The CUSUMSQ test (the straight lines represent critical bounds at 5% significance levels)

