

**RRS PUBLIC ACCESS**

Author manuscript

J Neurol Neurosurg Psychiatry. Author manuscript; available in PMC 2017 February 01.

Published in final edited form as:

J Neurol Neurosurg Psychiatry. 2017 February ; 88(2): 152–164. doi:10.1136/jnnp-2016-314411.**Genetic architecture of sporadic frontotemporal dementia and overlap with Alzheimer's and Parkinson's diseases**

Raffaele Ferrari¹, Yunpeng Wang², Jana Vandrovцова^{1,3}, Sebastian Guelfi^{1,3}, Aree Witeolar², Celeste M Karch⁴, Andrew J Schork⁵, Chun C Fan⁵, James B Brewer^{6,7}, International FTD-Genomics Consortium (IFGC), International Parkinson's Disease Genomics Consortium (IPDGC), International Genomics of Alzheimer's Project (IGAP), Parastoo Momeni⁸, Gerard S Schellenberg⁹, William P Dillon¹⁰, Leo P Sugrue¹⁰, Christopher P Hess¹⁰, Jennifer S Yokoyama¹¹, Luke W Bonham¹¹, Gil D Rabinovici¹¹, Bruce L Miller¹¹, Ole A Andreassen², Anders M Dale^{5,6,7}, John Hardy¹, and Rahul S Desikan¹⁰

¹Department of Molecular Neuroscience, Institute of Neurology, UCL, London, UK²NORMENT, Institute of Clinical Medicine, University of Oslo and Division of Mental Health and Addiction, Oslo University Hospital, Oslo, Norway³Department of Medical & Molecular Genetics, King's College London, Guy's Hospital, London, UK⁴Department of Psychiatry, Washington University, St. Louis, Missouri, USA

Correspondence to Dr Raffaele Ferrari, Department of Molecular Neuroscience, University College London, Russell Square House, London WC1B 5EH, UK; r.ferrari@ucl.ac.uk.

The IFGC and IPDGC members are listed in the supplementary acknowledgments.

Contributors R Ferrari; D G Hernandez; M A Nalls; J D Rohrer; A Ramasamy; J B J Kwok; C Dobson-Stone; P R Schofield; G M Halliday; J R Hodges; O Piguet; L Bartley; E Thompson; E Haan; I Hernández; A Ruiz; M Boada; B Borroni; A Padovani; C Cruchaga; N J Cairns; L Benussi; G Binetti; R Ghidoni; G Forloni; D Albani; D Galimberti; C Fenoglio; M Serpente; E Scarpini; J Clarimón; A Lleó; R Blesa; M Landqvist Waldö; K Nilsson; C Nilsson; I R A Mackenzie; G-Y R Hsiung; D M A Mann; J Grafman; C M Morris; J Attems; T D Griffiths; I G McKeith; A J Thomas; P Pietrini; E D Huey; E M Wassermann; A Baborie; E Jaros; M C Tierney; P Pastor; C Razquin; S Ortega-Cubero; E Alonso; R Perneczky; J Diehl-Schmid; P Alexopoulos; A Kurz; I Rainero; E Rubino; L Pinessi; E Rogaeva; P St George-Hyslop; G Rossi; F Tagliavini; G Giaccone; J B Rowe; J C M Schlachetzki; J Uphill; J Collinge; S Mead; A Danek; V M Van Deerlin; M Grossman; J Q Trojanowski; J van der Zee; M Cruts; C Van Broeckhoven; S F Cappa; I Leber; D Hannequin; V Galfier; M Vercelletto; A Brice; B Nacmias; S Sorbi; S Bagnoli; I Piaceri; J E Nielsen; L E Hjermand; M Riemenschneider; M Mayhaus; B Ibach; G Gasparoni; S Pichler; W Gu; M N Rossor; N C Fox; J D Warren; M G Spillantini; H R Morris; P Rizzu; P Heutink; J S Snowden; S Rollinson; A Richardson; A Gerhard; A C Bruni; R Maletta; F Frangipane; C Cupidi; L Bernardi; M Anfossi; M Gallo; M E Conidi; N Smirne; R Rademakers; M Baker; D W Dickson; N R Graff-Radford; R C Petersen; D Knopman; K A Josephs; B F Boeve; J E Parisi; W W Seeley; B L Miller; A M Karydas; H Rosen; J C van Swieten; E G P Dopper; H Seelaar; Y A L Pijnenburg; P Scheltens; G Logroscino; R Capozzo; V Novelli; A A Puca; M Franceschi; A Postiglione; G Milan; P Sorrentino; M Kristiansen; H-H Chiang; C Graff; F Pasquier; A Rollin; V Deramecourt; T Lebouvier; D Kapogiannis; L Ferrucci; S Pickering-Brown; A B Singleton; J Hardy; P Momeni

Contributors RF and RSD analysed and interpreted data and wrote the manuscript. YW, JV, SG, AW, CMK, AJS, CCF, JBB, PM, GSS, WPD, LPS, CPH, JSY, LWB, GDR, BLM, OAA, AMD and JH contributed to the conception or design of the work or the acquisition or analysis of data and critically reviewed the drafted manuscript at multiple stages.

Disclaimer The funding organisations had no role in the design and conduct of the study; collection, management, analysis and interpretation of the data; preparation, review or approval of the manuscript; and decision to submit the manuscript for publication.

Competing interests None declared.

Ethics approval The relevant institutional review boards or ethics committees approved the research protocol of the individual GWAS used in the current analysis, and all human participants gave written informed consent.

Provenance and peer review Not commissioned; externally peer reviewed.

⁵Department of Cognitive Sciences, University of California, San Diego, La Jolla, California, USA

⁶Department of Radiology, University of California, San Diego, La Jolla, California, USA

⁷Department of Neurosciences, University of California, San Diego, La Jolla, California, USA

⁸Laboratory of Neurogenetics, Department of Internal Medicine, Texas Tech University Health Science Center, Lubbock, Texas, USA

⁹Department of Pathology and Laboratory Medicine, University of Pennsylvania Perelman School of Medicine, Philadelphia, Pennsylvania, USA

¹⁰Neuroradiology Section, Department of Radiology and Biomedical Imaging, University of California, San Francisco, San Francisco, California, USA

¹¹Department of Neurology, University of California, San Francisco, San Francisco, California, USA

Abstract

Background—Clinical, pathological and genetic overlap between sporadic frontotemporal dementia (FTD), Alzheimer’s disease (AD) and Parkinson’s disease (PD) has been suggested; however, the relationship between these disorders is still not well understood. Here we evaluated genetic overlap between FTD, AD and PD to assess shared pathobiology and identify novel genetic variants associated with increased risk for FTD.

Methods—Summary statistics were obtained from the International FTD Genomics Consortium, International PD Genetics Consortium and International Genomics of AD Project (n>75 000 cases and controls). We used conjunction false discovery rate (FDR) to evaluate genetic pleiotropy and conditional FDR to identify novel FTD-associated SNPs. Relevant variants were further evaluated for expression quantitative loci.

Results—We observed SNPs within the *HLA*, *MAPT* and *APOE* regions jointly contributing to increased risk for FTD and AD or PD. By conditioning on polymorphisms associated with PD and AD, we found 11 loci associated with increased risk for FTD. Meta-analysis across two independent FTD cohorts revealed a genome-wide signal within the *APOE* region (rs6857, 3′-UTR=*PVRL2*, p=2.21×10⁻¹²), and a suggestive signal for rs1358071 within the *MAPT* region (intronic=*CRHRI*, p=4.91×10⁻⁷) with the effect allele tagging the H1 haplotype. Pleiotropic SNPs at the *HLA* and *MAPT* loci associated with expression changes in *cis*-genes supporting involvement of intracellular vesicular trafficking, immune response and endo/lysosomal processes.

Conclusions—Our findings demonstrate genetic pleiotropy in these neurodegenerative diseases and indicate that sporadic FTD is a polygenic disorder where multiple pleiotropic loci with small effects contribute to increased disease risk.

INTRODUCTION

Frontotemporal dementia (FTD) is a neurodegenerative disorder characterised by progressive impairment of behaviour, cognition and executive function or language.¹ Recent converging evidence suggests clinical, pathological and genetic overlap between FTD and

other common neurodegenerative diseases including Alzheimer's disease (AD) and Parkinson's disease (PD).

From a clinical perspective, FTD and AD can sometimes be difficult to distinguish at onset or during disease progression:² non-cognitive manifestations such as mood changes, psychosis and variable social conduct can characterise the initial phases of AD patients.³ Similarly, cognitive dysfunctions such as changes in abstract thinking or poor judgement, planning and difficulty in completing tasks become evident in either condition as the disease progresses.⁴ This might partially reflect the fact that FTD and AD are associated with progressive impairment of similar brain circuits (frontal, prefrontal or temporal lobes and/or subcortical regions).⁵ Of note, among the primary progressive aphasia (PPA) cases in FTD, logopenic progressive aphasia (LPA) has been suggested as an atypical early presentation of AD.⁶ In addition, the subtype called FTD and parkinsonism linked to chromosome 17 (FTDP-17)—linked to mutations in the microtubule-associated protein tau (MAPT)⁷ and progranulin (GRN) genes⁸—shows parkinsonian-like syndrome,⁹ while dementia features can be found in up to 30–80% of PD cases (Parkinson's Disease Dementia (PDD)) in later stages of the disease.¹⁰

From a pathological perspective, abnormal intracellular accumulation of the tau protein is seen in FTD and AD.¹¹ Additionally, TDP-43 pathology has been reported in AD and FTD at different disease stages,¹² and in some rare PD cases associated with variability in leucine-rich repeat kinase 2 (*LRRK2*).¹³

From a genetic perspective, distinct genetic and genome-wide scale studies have suggested potential genetic overlap between FTD, AD and PD at specific loci. The *MAPT* gene on chromosome 17 has been extensively investigated in FTD¹¹ and has been recently implicated in AD¹⁴ and PD,¹⁵ suggesting that tau pathology might jointly contribute to FTD, AD and PD. In addition, genome-wide association studies (GWAS) have revealed that common genetic variants within the *HLA* region on chromosome 6 increase risk for FTD,¹⁶ AD¹⁷ and PD.¹⁸

Evaluating genetic overlap between complex traits is based on the concept that gene(s) or genetic variant(s) can influence more than one distinct phenotype (=genetic pleiotropy).¹⁹ Availability of large-scale genetic data sets (eg, genome-wide summary statistics) is a key to estimate the level of genetic overlap, or genetic pleiotropy, across diverse traits including groups of related disorders.²⁰

We have recently developed methods to evaluate genetic pleiotropy across different disorders (identifying novel genetic variants associated with various conditions including multiple sclerosis and AD).^{14,21,22} In the current work, we sought to apply these methods taking advantage of existing large-scale genetic data (ie, summary statistics) for FTD,¹⁶ AD²³ and PD²⁴ to identify genetic overlap, that is, pleiotropic effects, across these neurodegenerative disorders.

MATERIALS AND METHODS

Participant samples

We evaluated complete summary statistics (p values and ORs) from GWAS data of clinically diagnosed FTD,¹⁶ AD²³ and PD.²⁴ We used AD-GWAS summary statistic data from the International Genomics of AD Project (IGAP Stage 1), which consisted of 17 008 AD and 37 154 controls with genotyped or imputed data at 7 055 881 SNPs (see table 1 for additional details).²³ We obtained PD-GWAS summary statistic data from the International Parkinson's Disease Genomics Consortium (IPDGC) consisting of 5333 cases and 12 019 controls with genotyped and imputed data at 7 689 524 SNPs (see table 1 for additional details).²⁴

We examined FTD summary statistic GWAS data (discovery+ replication phase) from the International FTD-Genomics Consortium (IFGC).¹⁶ As our discovery cohort, we used the IFGC phase I cohort (table 1), consisting of 2154 FTD cases and 4308 controls with genotyped and imputed data at 6 026 384 SNPs.¹⁶ To replicate our findings from the discovery analyses using IFGC phase I, we assessed the p values of pleiotropic SNPs (conditional FDR<0.05; see the 'Statistical analysis' section) within the IFGC phase II sample. The IFGC phase II sample consisted of 1372 FTD cases and 5094 controls genotyped using a partially custom-designed Illumina NeuroX chip (see table 1 for details).¹⁶ The IFGC multicenter GWAS has been described in detail elsewhere.¹⁶ Briefly, 44 international research groups contributed samples to this two-stage clinical FTD-GWAS. We evaluated genetic data from patients clinically diagnosed with behavioural variant FTD (bvFTD), semantic dementia (SD), progressive non-fluent aphasia (PNFA) and FTD with motor neuron disease (FTD-MND). As described in the original study, we excluded any cases with clinically diagnosed LPA, progressive supranuclear palsy (PSP) or corticobasal degeneration (CBD). In this study, *MAPT* and *GRN* mutation carriers were excluded whereas individuals with *C9orf72* expansions were not excluded because this locus was identified subsequent to original sample collection. The relevant institutional review boards or ethics committees approved the research protocol of the individual GWAS used in the current analysis, and all human participants gave written informed consent.

Statistical analysis

Using recently developed statistical methods to evaluate pleiotropic effects, we evaluated single nucleotide polymorphisms (SNPs) associating with FTD, AD and PD. These methods have been described in extensive detail in a number of recent publications.¹⁴¹⁷²² Briefly, for given associated phenotypes A and B, pleiotropic enrichment of phenotype A with phenotype B exists if the proportion of SNPs or genes associated with phenotype A increases as a function of increased association with phenotype B. To assess enrichment, we constructed fold-enrichment plots of nominal $-\log_{10}(p)$ values for all FTD-SNPs and a subset of SNPs determined by the significance of their association with PD and AD. In fold-enrichment plots, the presence of enrichment is reflected by an upward deflection of the curve for phenotype A if the degree of deflection from the expected null line is dependent on the degree of association with phenotype B. To assess for polygenic effects below the standard GWAS significance threshold, we focused the fold-enrichment plots on SNPs with

nominal $-\log_{10}(p) < 7.3$ (corresponding to $p \text{ value} > 5 \times 10^{-8}$). The enrichment can be directly interpreted in terms of true discovery rate ($\text{TDR} = 1 - \text{false discovery rate [FDR]}$).²²

To identify specific loci involved in FTD and AD or FTD and PD, we computed conjunction FDR.¹⁷ Conjunction FDR, denoted by $\text{FDR}_{\text{trait1} \& \text{trait2}}$, is defined as the posterior probability that a SNP is null for either phenotype or both simultaneously, given the p values for both traits are as small, or smaller, than the observed p values. A conservative estimate of the conjunction FDR is given by the maximum statistic in taking the maximum of $\text{FDR}_{\text{trait1}|\text{trait2}}$ and $\text{FDR}_{\text{trait2}|\text{trait1}}$.¹⁷ We used an overall FDR threshold of < 0.05 , which means five expected false discovery per hundred reported. Additionally, we constructed Manhattan plots based on the ranking of conjunction FDR to illustrate the genomic location of the pleiotropic loci.¹⁷

To identify specific FTD loci, we computed conditional FDR.¹⁴²² The standard FDR framework derives from a model that assumes the distribution of test statistics in a GWAS can be formulated as a mixture of null and non-null effects, with true associations (non-null effects) having more extreme test statistics, on average, than false associations (null effects). The conditional FDR is an extension of the standard FDR, which incorporates information from GWAS summary statistics of a second phenotype to adjust its significance level. The conditional FDR is defined as the probability that a SNP is null in the first phenotype given that the p values in the first and second phenotypes are as small as, or smaller, than the observed ones. It is important to note that ranking SNPs by standard FDR or by p values both give the same ordering of SNPs. In contrast, if the primary and secondary phenotypes are related genetically, conditional FDR re-orders SNPs and results in a different ranking than that based on p values alone. We used an overall FDR threshold of < 0.05 , which means five expected false discovery per hundred reported. Additionally, we constructed Manhattan plots based on the ranking of conditional FDR to illustrate the genomic location of the pleiotropic loci. In all analyses, we controlled for the effects of genomic inflation by using intergenic SNPs.¹⁴²² Detailed information on fold-enrichment and conditional Q-Q plots, Manhattan plots and conditional FDR can be found in prior reports.¹⁴²²

For loci with conditional $\text{FDR} < 0.05$, we performed a fixed effects, inverse variance weighted meta-analysis across the discovery and replication FTD cohorts (IFGC phases I and II, total $n = 3526$ FTD cases and 9402 healthy controls) using the R package *meta* (<http://CRAN.R-project.org/package=meta>).²⁵ Briefly, the fixed effects, inverse variance weighted meta-analysis summarises the combined statistical support across independent studies under the assumption of homogeneity of effects. Individual study β estimates (log ORs) are averaged, weighted by the estimated SE.

Expression quantitative trait loci

For the expression quantitative trait loci (eQTL) analyses, we used data generated within the Braineac (<http://www.braineac.org>) and GTEx (<http://www.gtexportal.org/home/>) projects. Briefly, in braineac, eQTL data were generated from 101 neuropathologically defined controls in the following 10 brain regions: cerebellar cortex, frontal cortex, hippocampus, medulla (specifically inferior olivary nucleus), occipital cortex (specifically primary visual cortex), putamen, substantia nigra, thalamus, temporal cortex and intralobular white matter. In GTEx, eQTL data were available for the following 10 brain regions: anterior cingulate

cortex (BA24; n=72), caudate (basal ganglia; n=100), cerebellar hemisphere (n=89), cerebellum (n=103), cortex (n=96), frontal cortex (BA9; n=92), hippocampus (n=81), hypothalamus (n=81), nucleus accumbens (basal ganglia; n=93) and putamen (basal ganglia; n=82).

Each eQTL was within ± 1 MB of each SNP, and the significance threshold was $p < 1 \times 10^{-5}$ as per website curators.

RESULTS

Polygenic enrichment in FTD as a function of AD and PD

We observed enrichment for FTD-SNPs (IFGC phase I) across different levels of significance of association with AD and PD (figure 1). For progressively stringent p value thresholds of FTD-SNPs (ie, increasing values of nominal $-\log_{10}P_{\text{FTD}} \geq 6$), we found 140-fold and 120-fold pleiotropic enrichment as a function of AD ($-\log_{10}P_{\text{AD}} \geq 3.0$) and PD ($-\log_{10}P_{\text{PD}} \geq 3.0$) SNPs, respectively (figure 1). Although decreased in magnitude, we observed a similar pattern of enrichment for AD-SNPs and PD-SNPs conditional on FTD-SNPs suggesting symmetric genetic overlap between the three neurodegenerative diseases (see online supplementary figure S1).

Conjunction FDR identifies shared FTD loci

At a conjunction FDR < 0.05, we identified 11 SNPs that were associated with FTD and AD or PD (figure 2A and table 2). These included rs405509 (chromosome 19; intergenic; closest gene = *APOE*; conjunction trait = AD; min conjunction FDR = 0.0052) and rs9268877 (chromosome 6; intergenic; closest gene = *HLA-DRA*; conjunction trait = PD; min conjunction FDR = 0.048). We also found two pleiotropic loci in the *MAPT* haplotype-region, namely rs199528 (chromosome 17; intronic = *WNT3*; conjunction trait = PD; min conjunction FDR = 0.018) and rs1358071 (chromosome 17; intronic = *CRHR1*; conjunction trait = PD; min conjunction FDR = 0.02). We detected additional shared loci between FTD and PD on chromosomes 4 (rs7664889, intronic = *SCARB2*), 10 (rs676768, intronic = *VWA2*), 12 (rs10784359, intronic = *SLC2A13*), 13 (rs2893253; intergenic; closest gene = *EFNB2*) and 18 (rs12964543, intronic = *ZNF532*) (table 2).

Conditional FDR identifies novel FTD loci

To identify novel SNPs associated with FTD, we ranked IFGC phase I FTD-SNPs conditional on their genetic association with AD and PD (conditional FDR), particularly focusing on those SNPs that did not reach genome-wide significant levels in the previous FTD-GWAS. At a conditional FDR < 0.05, we found 13 novel FTD susceptibility loci: 11/13 polymorphisms were available for replication purposes within the IFGC2 cohort (7 actual SNPs and 4 proxies with linkage disequilibrium (LD) $r^2 \geq 0.7$ and within 500 kb distance from the reference SNP (based on HapMap 22/21)) (figure 2b, table 3). Then, meta-analysis across IFGC phase I and II cohorts revealed one genome-wide significant locus ($p < 5 \times 10^{-8}$): rs6857 on chromosome 19 (3'-UTR = *PVRL2*; conditioning trait = PD; reference allele = T; OR = 1.34; 95% CI 1.23 to 1.45; $p = 2.21 \times 10^{-12}$) (table 3, figures 3A and 4B). We also found one suggestive locus (at $p < 5 \times 10^{-7}$) on rs1358071 within the *MAPT* region on chromosome

17 (intronic=CRHR1; conditioning trait=PD; reference allele=A; OR=1.19; 95% CI 1.11 to 1.27; $p=4.91 \times 10^{-7}$) (table 3, figures 3B and 4B).

Expression quantitative trait loci

We evaluated potential biological relevance for each of the identified conjunction and conditional FDR SNPs (rs7664889, rs9268877, rs676768, rs10784359, rs2893253, rs199528, rs1358071, rs12964543, rs405509, rs4417745, rs1328032, rs2446406, rs7184882, rs6857, rs302665 and rs10507789) in human brain tissues assayed for genome-wide gene expression. There were 20 eQTLs in the Braineac data set, while data extracted from GTEx indicated up to 144 significant eQTLs (table 4). These were driven by rs199528 and rs1358071 (chr 17; *MAPT*-haplotype locus) and by rs9268877 (chr 6; *HLA* locus). No eQTLs were found for rs405509 and rs6857 (chr19; *APOE* locus).

The eQTL data from Braineac and GTEx were cross-supportive in different brain regions, including frontal and temporal cortices, jointly indicating influence on expression levels of *LRRC37A2*, *KANSL1*, *LRRC37A4* and *CRHR1* for rs199528 and rs1358071; conversely, changes in expression of *HLA-DPA1* (from Braineac in frontal cortex), and *HLA-DRB1* and *HLA-DQA2* (from GTEx in subcortical regions and cerebellum) were evident for rs9268877 (table 4).

DISCUSSION

The current work shows that several genetic markers are jointly associated with increased risk for FTD, AD and PD. By leveraging recently developed and validated genetic methods, our findings indicate potential shared genetic architecture among these neurodegenerative diseases and suggest the polygenic nature of sporadic FTD where multiple pleiotropic loci with small effect size contribute to increased disease risk. To the best of our knowledge, this is the first large-scale study assessing genetic overlap between sporadic FTD and AD, and sporadic FTD and PD.

Using the conjunction FDR (which identifies loci jointly associated with two traits), we found eight polymorphisms specific to FTD-PD and one to FTD-AD; through the conditional FDR (which leverages secondary phenotypes, eg, AD and PD, to improve statistical power for gene discovery) we identified 13 novel FTD associated loci. Of note, all nine conjunction FDR loci were also detected in the conditional FDR analyses supporting the notion that the shared polymorphisms increase risk for developing sporadic FTD. Across all analyses, we found notable relevance for the *HLA*, *MAPT* and *APOE* regions.

Building on prior work implicating the involvement of the immune system in PD²⁶ and AD,¹⁷ we found that rs9268877, on chromosome 6, intergenic between *HLA-DRA* and *HLA-DRB5*, is a shared marker between FTD and PD. The risk allele of this SNP was robustly associated with changes in expression of *HLA-DPA1* (increased expression), *HLA-DRB1* (increased expression) and *HLA-DQA2* (decreased expression) in brain tissues. *HLA-DPA1* is an HLA class II α chain paralogue presenting peptides derived from extracellular proteins;²⁷ this is of particular relevance as impairment of clearance of extracellular debris might increase risk of developing a neurodegenerative condition,²⁸

including FTD and PD. While *HLA-DRB1* has functions similar to *HLA-DPA1*, *HLA-DQA2* belongs to the HLA class II α chain family located in intracellular vesicles: it plays a central role in the peptide loading of MHC class II molecules and releasing the class II-associated invariant chain peptide (CLIP) molecule from the peptide-binding site. This prevents the binding of self-peptide fragments prior to MHC II localisation within the endolysosome.²⁹ Taken together, these data support and further elucidate details about the role of immune system and endolysosomal processes in FTD and PD.

Our results also point to the *MAPT* region as jointly involved in PD and FTD through two SNPs on chromosome 17 mapping to *WNT3* (wingless-type MMTV integration site family member 3; rs199528) and *CRHR1* (corticotropin releasing hormone receptor 1; rs1358071). The risk alleles of both markers, which tag the H1 *MAPT*-haplotype (figure 4a), are associated with robust expression changes of *LRRC37A2* (decreased expression), *KANSL1* (decreased expression), *LRRC37A4* (increased expression) and *CRHR1* (decreased expression). The *LRRC37A* (leucine-rich repeat containing 37 member) genes encode plasma membrane proteins that pass from the Golgi to the endoplasmic reticulum (ER) and extracellular areas through vesicle transport³⁰ reiterating that intracellular vesicle trafficking is a sensitive and potentially vulnerable process in the brain. The *KANSL1* (KAT8 regulatory NSL complex subunit 1) gene encodes a nuclear protein targeting the DNA and involved in histone acetylation with the MLL1 and NSL1 complexes: disruption, mutations or haploinsufficiency of this gene have been associated with the 17q21.31 microdeletion syndrome.³¹ *CRHR1* encodes a G protein-coupled receptor for neuropeptides involved in diverse physiological processes including stress and immune responses.³² Overall, these data strongly suggest that the H1 *MAPT*-haplotype contributes to increased risk for FTD and PD and its effect is likely mediated by modulating changes in the expression profiles of functionally important *cis*-genes.

We found evidence for involvement of the *APOE* region in FTD. We detected a genome-wide significant association signal in sporadic FTD for rs6857 (3'UTR in *PVRL2*; p value = 2.21×10^{-12}) and identified rs405509, intergenic between *TOMM40* (translocase of outer mitochondrial membrane 40) and *APOE* (apolipoprotein E), as jointly associated with FTD and AD. Rs6857 and rs405509 are in linkage equilibrium (LE; $r^2=0.1$) and are part of two separate haplotypes (figure 4b): (1) one spanning 12 kb (including 13 SNPs [rs142042446, rs12972156, rs12972970, rs34342646, rs283811, rs283815, rs71352238, rs184017, rs2075650, rs34404554, rs11556505, rs778934950 and rs59007384] with $r^2 \sim 0.8$) and encompassing *PVRL2* and *TOMM40* for rs6857 (haplotype a), and (2) one spanning 14 kb (including 10 SNPs [rs157584, rs71337246, rs7157588, rs7157590, rs1160985, rs760136, rs741780, rs1038025, rs34215622 and rs7259620] with $r^2 \sim 0.8$) and encompassing *TOMM40* and *APOE* for rs405509 (haplotype b). Our data indicate that rs6857 increases risk of FTD, while this was not the case for rs405509. No SNP within either haplotype (a or b) was functionally associated with *cis*-regulatory effects. A large body of evidence implicates *APOE* as a strong genetic risk factor for AD. Whether it is a genetic modifier of disease risk with non-AD neurodegenerative diseases is still unclear. In this respect, several studies in the literature have highlighted this locus as a potential risk factor, with variable effect size, for a variety of conditions including vascular dementia (VD), amyotrophic lateral sclerosis (ALS), PD and dementia with Lewy bodies (DLB).³³

Although early work did not find a clear association between the *APOE* locus and FTD,³⁴ more recent studies suggest that it might associate with FTD risk^{35–37} and accelerate frontotemporal brain atrophy.³⁸ Given potential overlap between patients diagnosed with clinical FTD and AD,³⁹ it is unclear whether the current findings reflect a genuine association with FTD or might be inflated by subtle presence of AD or FTD cases in either original study cohort. Nonetheless, these data raise the question whether the detected *PVRL2* SNP tags an FTD-specific risk disease haplotype: future work will be required to further characterise the potential role of this locus—in particular, haplotype a—in FTD.

We also detected several pleiotropic loci between FTD and PD, in addition to *HLA*, *MAPT* and *APOE*. The marker on chr 4, rs7664889, is intronic to the *SCARB2* (scavenger receptor class B member 2) gene that encodes a glycoprotein locating to the membrane of lysosomes and endosomes further supporting the notion of impacted endolysosomal tracts in FTD and PD. The marker on chromosome 12, rs10784359 maps to the intronic region of *SLC2A13* (solute carrier family 2 member 13) a gene which is part of the extended locus that includes *LRRK2* indicating that this region may also mediate FTD risk.⁴⁰

Some limitations might apply to studies of this kind. Particularly, in the original works, the diagnoses of FTD, AD and PD were established clinically. This has the potential to introduce subtle clinical overlap across cohorts, thus assessments in large pathology confirmed cohorts is the next valuable and warranted step to take. However, it must be acknowledged that such ad hoc cohorts are currently not yet available.

Considered together with prior work, our results overall are a first step in the process of decrypting common underpinnings of FTD, AD and PD: they suggest that a subset of genetic markers in the *HLA* and *MAPT*-H1 regions (and potentially the *APOE* cluster) might be jointly involved in these neurodegenerative disorders. In the case of the *HLA* and *MAPT* loci, differentially expressed genes in distinct brain regions might account for the clinical and phenotypic differences observed across these disorders.⁴¹ Of note, the relevant pleiotropic SNPs that we found in the *HLA* and *MAPT* regions do appear to exert their effect by influencing expression changes in *cis*-genes involved in immune response, endolysosomal processes, intracellular vesicular trafficking and DNA/chromatin-associated metabolism, further supporting the notion of involvement of these processes in neurodegenerative disease, including FTD.⁴² More work will be needed to further characterise our pleiotropic signals, which might hold promise in the future for developing global preventive and therapeutic strategies for FTD, AD and PD.

In summary, we here identified (1) genetic overlap between FTD and AD and FTD and PD and (2) novel loci influencing FTD pathobiology with small effect size illustrating that a substantial polygenic component contributes to FTD risk.

Supplementary Material

Refer to Web version on PubMed Central for supplementary material.

Acknowledgements

The authors thank the International FTD-Genomics Consortium (IFGC), the International Parkinson's Disease Genomic Consortium (IPDGC) and the International Genomics of Alzheimer's Project (IGAP) for providing summary statistics data for these analyses. Further acknowledgments for IFGC, IPDGC and IGAP are found in the online supplementary material.

Funding This research was supported by grants from the National Institutes of Health (NIH-AG046374, K01 AG049152), Larry J Hilbom Foundation, the Research Council of Norway (#213837, #225989, #223273, #237250/EU JPND), the South East Norway Health Authority (2013–123), Norwegian Health Association and the KG Jebsen Foundation. RSD was supported by the National Alzheimer's Coordinating Center Junior Investigator Award, ASNR Foundation Alzheimer's Imaging Research Grant Program and NIH/NIDA grant U24DA041123. RF is supported by Alzheimer's Society (grant number 284). For IFGC, IPDGC and IGAP funding sources, see online supplemental acknowledgements.

REFERENCES

1. Bang J, Spina S, Miller BL. Frontotemporal dementia. *Lancet*. 2015; 386:1672–82. [PubMed: 26595641]
2. Bora E, Walterfang M, Velakoulis D. Theory of mind in behavioural-variant frontotemporal dementia and Alzheimer's disease: a meta-analysis. *J Neurol Neurosurg Psychiatr*. 2015; 86:714–9. [PubMed: 25595152]
3. Mega MS, Cummings JL, Fiorello T, et al. The spectrum of behavioral changes in Alzheimer's disease. *Neurology*. 1996; 46:130–5. [PubMed: 8559361]
4. Karantzoulis S, Galvin JE. Distinguishing Alzheimer's disease from other major forms of dementia. *Expert Rev Neurother*. 2011; 11:1579–91. [PubMed: 22014137]
5. Silveri MC. Frontotemporal dementia to Alzheimer's disease. *Dialogues Clin Neurosci*. 2007; 9:153–60. [PubMed: 17726914]
6. Rohrer JD, Warren JD. Phenotypic signatures of genetic frontotemporal dementia. *Curr Opin Neurol*. 2011; 24:542–9. [PubMed: 21986680]
7. Hutton M, Lendon CL, Rizzu P, et al. Association of missense and 5'-splice-site mutations in tau with the inherited dementia FTDP-17. *Nature*. 1998; 393:702–5. [PubMed: 9641683]
8. Baker M, Mackenzie IR, Pickering-Brown SM, et al. Mutations in progranulin cause tau-negative frontotemporal dementia linked to chromosome 17. *Nature*. 2006; 442:916–19. [PubMed: 16862116]
9. Siuda J, Fujioka S, Wszolek ZK. Parkinsonian syndrome in familial frontotemporal dementia. *Parkinsonism Relat Disord*. 2014; 20:957–64. [PubMed: 24998994]
10. Irwin DJ, Lee VM, Trojanowski JQ. Parkinson's disease dementia: convergence of α -synuclein, tau and amyloid- β pathologies. *Nat Rev Neurosci*. 2013; 14:626–36. [PubMed: 23900411]
11. Spillantini MG, Goedert M. Tau pathology and neurodegeneration. *Lancet Neurol*. 2013; 12:609–22. [PubMed: 23684085]
12. Josephs KA, Murray ME, Whitwell JL, et al. Updated TDP-43 in Alzheimer's disease staging scheme. *Acta neuropathol*. 2016; 131:571–85. [PubMed: 26810071]
13. Ling H, Kara E, Bandopadhyay R, et al. TDP-43 pathology in a patient carrying G2019S LRRK2 mutation and a novel p.Q124E MAPT. *Neurobiol Aging*. 2013; 34:2889. e5-9.
14. Desikan RS, Schork AJ, Wang Y, et al. Genetic overlap between Alzheimer's disease and Parkinson's disease at the MAPT locus. *Mol Psychiatry*. 2015; 20:1588–95. [PubMed: 25687773]
15. Satake W, Nakabayashi Y, Mizuta I, et al. Genome-wide association study identifies common variants at four loci as genetic risk factors for Parkinson's disease. *Nat Genet*. 2009; 41:1303–7. [PubMed: 19915576]
16. Ferrari R, Hernandez DG, Nalls MA, et al. Frontotemporal dementia and its subtypes: a genome-wide association study. *Lancet Neurol*. 2014; 13:686–99. [PubMed: 24943344]
17. Yokoyama JS, Wang Y, Schork AJ, et al. Association between genetic traits for immune-mediated diseases and Alzheimer disease. *JAMA Neurol*. 2016; 73:691–7. [PubMed: 27088644]

18. Hamza TH, Zabetian CP, Tenesa A, et al. Common genetic variation in the HLA region is associated with late-onset sporadic Parkinson's disease. *Nat Genet.* 2010; 42:781–5. [PubMed: 20711177]
19. Gratten J, Visscher PM. Genetic pleiotropy in complex traits and diseases: implications for genomic medicine. *Genome Med.* 2016; 8:78. [PubMed: 27435222]
20. Parkes M, Cortes A, van Heel DA, et al. Genetic insights into common pathways and complex relationships among immune-mediated diseases. *Nat Rev Genet.* 2013; 14:661–73. [PubMed: 23917628]
21. Wang Y, Bos SD, Harbo HF, et al. Genetic overlap between multiple sclerosis and several cardiovascular disease risk factors. *Mult Scler.* 2016
22. Desikan RS, Schork AJ, Wang Y, et al. Polygenic overlap between C-Reactive protein, plasma lipids, and Alzheimer disease. *Circulation.* 2015; 131:2061–9. [PubMed: 25862742]
23. Lambert JC, Ibrahim-Verbaas CA, Harold D, et al. Meta-analysis of 74,046 individuals identifies 11 new susceptibility loci for Alzheimer's disease. *Nat Genet.* 2013; 45:1452–8. [PubMed: 24162737]
24. Nalls MA, Plagnol V, Hernandez DG, et al. International Parkinson Disease Genomics Consortium. Imputation of sequence variants for identification of genetic risks for Parkinson's disease: a meta-analysis of genome-wide association studies. *Lancet.* 2011; 377:641–9. [PubMed: 21292315]
25. Willer CJ, Li Y, Abecasis GR. METAL: fast and efficient meta-analysis of genomewide association scans. *Bioinformatics.* 2010; 26:2190–1. [PubMed: 20616382]
26. Ahmed I, Tamouza R, Delord M, et al. Association between Parkinson's disease and the HLA-DRB1 locus. *Mov Disord.* 2012; 27:1104–10. [PubMed: 22807207]
27. Urayama KY, Chokkalingam AP, Metayer C, et al. HLA-DP genetic variation, proxies for early life immune modulation and childhood acute lymphoblastic leukemia risk. *Blood.* 2012; 120:3039–47. [PubMed: 22923493]
28. Sokolowski JD, Mandell JW. Phagocytic clearance in neurodegeneration. *Am J Pathol.* 2011; 178:1416–28. [PubMed: 21435432]
29. Lenormand C, Bausinger H, Gross F, et al. HLA-DQA2 and HLA-DQB2 genes are specifically expressed in human Langerhans cells and encode a new HLA class II molecule. *J Immunol.* 2012; 188:3903–11. [PubMed: 22407913]
30. Giannuzzi G, Siswara P, Malig M, et al. Evolutionary dynamism of the primate LRRC37 gene family. *Genome Res.* 2013; 23:46–59. [PubMed: 23064749]
31. Koolen DA, Kramer JM, Neveling K, et al. Mutations in the chromatin modifier gene KANSL1 cause the 17q21.31 microdeletion syndrome. *Nat Genet.* 2012; 44:639–41. [PubMed: 22544363]
32. Weber H, Richter J, Straube B, et al. Allelic variation in CRHR1 predisposes to panic disorder: evidence for biased fear processing. *Mol Psychiatry.* 2016; 21:813–22. [PubMed: 26324098]
33. Verghese PB, Castellano JM, Holtzman DM. Apolipoprotein E in Alzheimer's disease and other neurological disorders. *Lancet Neurol.* 2011; 10:241–52. [PubMed: 21349439]
34. Geschwind D, Karrim J, Nelson SF, et al. The apolipoprotein E epsilon4 allele is not a significant risk factor for frontotemporal dementia. *Ann Neurol.* 1998; 44:134–8. [PubMed: 9667603]
35. Engelborghs S, Dermaut B, Mariën P, et al. Dose dependent effect of APOE epsilon4 on behavioral symptoms in frontal lobe dementia. *Neurobiol Aging.* 2006; 27:285–92. [PubMed: 16399213]
36. Rubino E, Vacca A, Govone F, et al. Apolipoprotein E polymorphisms in frontotemporal lobar degeneration: a meta-analysis. *Alzheimers Dement.* 2013; 9:706–13. [PubMed: 23688578]
37. Srinivasan R, Davidson Y, Gibbons L, et al. The apolipoprotein E epsilon4 allele selectively increases the risk of frontotemporal lobar degeneration in males. *J Neurol Neurosurg Psychiatr.* 2006; 77:154–8. [PubMed: 16421115]
38. Agosta F, Vessel KA, Miller BL, et al. Apolipoprotein E epsilon4 is associated with disease-specific effects on brain atrophy in Alzheimer's disease and frontotemporal dementia. *Proc Natl Acad Sci USA.* 2009; 106:2018–22. [PubMed: 19164761]
39. van der Zee J, Sleegers K, Van Broeckhoven C. Invited article: the Alzheimer disease-frontotemporal lobar degeneration spectrum. *Neurology.* 2008; 71:1191–7. [PubMed: 18838666]

40. Gao J, Nalls MA, Shi M, et al. An exploratory analysis on gene–environment interactions for Parkinson disease. *Neurobiol aging*. 2012; 33:2528. e1.e1-6.
41. Hyman BT. Tau propagation, different tau phenotypes, and prion-like properties of tau. *Neuron*. 2014; 82:1189–90. [PubMed: 24945760]
42. Ferrari R, Forabosco P, Vandrovicova J, et al. Frontotemporal dementia: insights into the biological underpinnings of disease through gene co-expression network analysis. *Mol Neurodegener*. 2016; 11:21. [PubMed: 26912063]

Author Manuscript

Author Manuscript

Author Manuscript

Author Manuscript

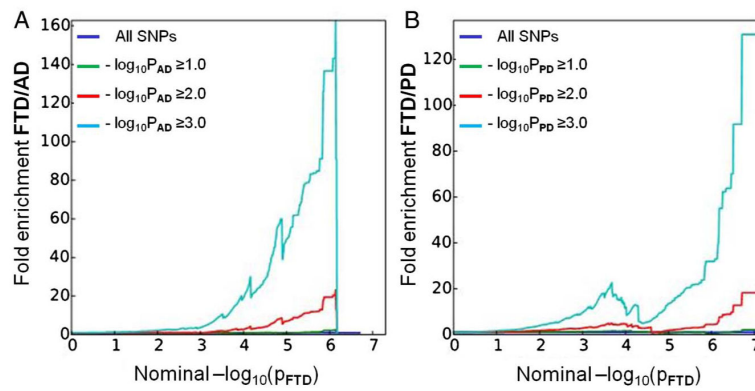


Figure 1.

Fold-enrichment plots of enrichment versus nominal $-\log_{10} p$ values (corrected for inflation) in FTD below the standard GWAS threshold of $p < 5 \times 10^{-8}$ as a function of significance of association with AD (A) and PD (B) and at the level of $-\log_{10}(p) = 0, 1, 2$ corresponding to $p = 1, p = 0.1$ and $p = 0.01$, respectively. Blue line indicates all SNPs. AD, Alzheimer's disease; FTD, frontotemporal dementia; GWAS, genome-wide association studies; PD, Parkinson's disease.

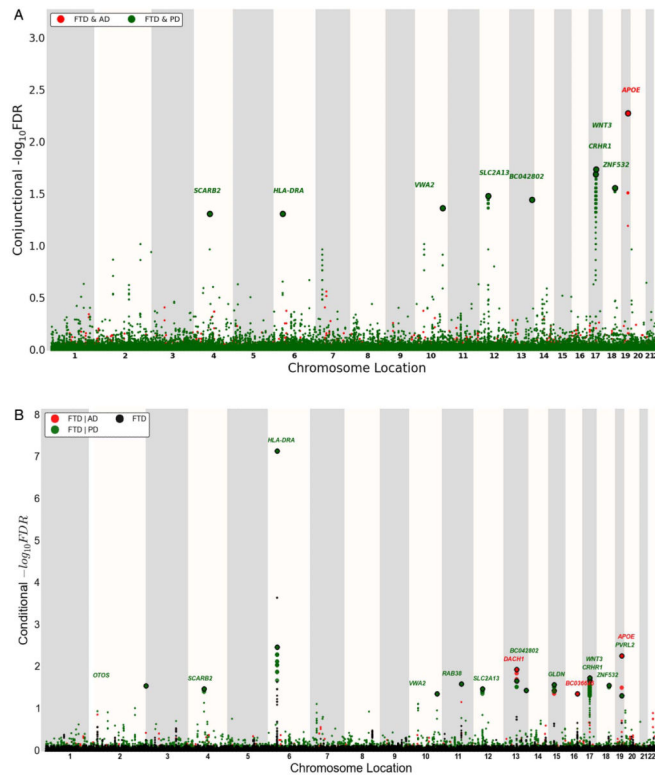


Figure 2. ‘Conjunction’ (A) and ‘conditional’ (B) Manhattan plots of conjunction and conditional $-\log_{10}(\text{FDR})$ values for FTD (black) and FTD given AD (FTD|AD, red) and PD (FTD|PD, green). SNPs with conditional and conjunction $-\log_{10}(\text{FDR}) > 1.3$ (ie, $\text{FDR} < 0.05$) are shown with large points. A black line around the large points indicates the most significant SNP in each LD block, and this SNP was annotated with the closest gene, which is listed above the symbols in each locus. For additional details, see online supplementary information. AD, Alzheimer’s disease; FTD, frontotemporal dementia; LD, linkage disequilibrium; PD, Parkinson’s disease.

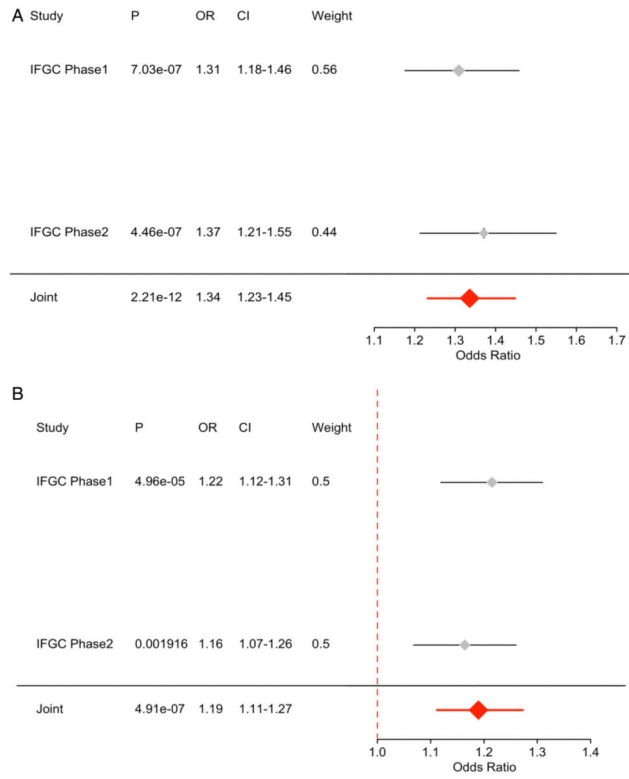


Figure 3. Forest plots for (A) rs6857 on chromosome 19 and (B) rs1358071 on chromosome 17.

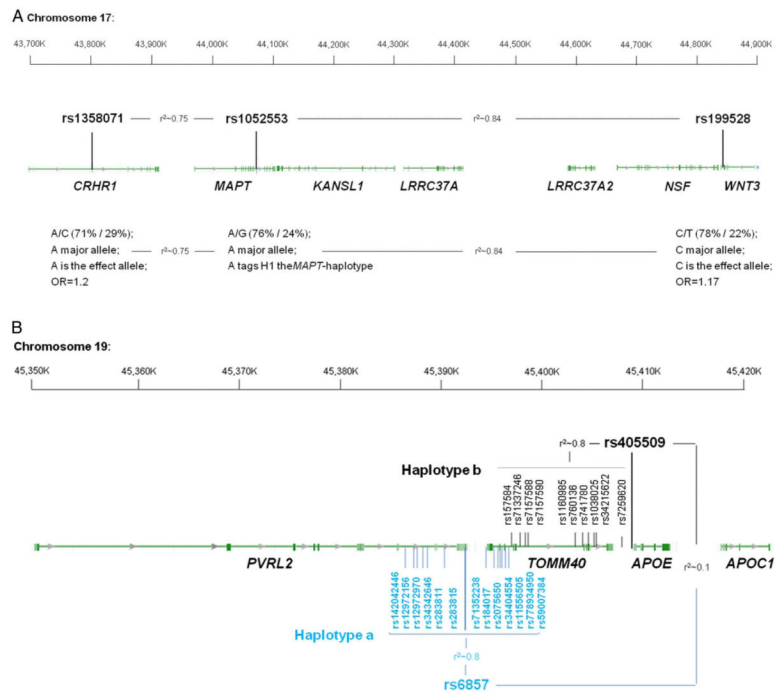


Figure 4.

(A) *MAPT*-locus on chromosome 17. The two SNPs, rs1358071 and rs199528, are shared between FTD and PD. Either SNP is in LD with rs1052553 whose major allele (A) tags the H1 *MAPT*-haplotype. The major alleles of rs1358071 and rs199528 are also the effect alleles, and they are in LD with rs1052553 ($r^2=0.75$ and 0.84 , respectively). Thus, the effect at this locus is H1 driven. (B) *APOE* locus. The two haplotypes a and b are depicted. Haplotype a is the one driven by rs6857 with 13 SNPs in LD ($r^2\sim 0.8$; font color: blue). Haplotype b is the one driven by rs405509 with 10 SNPs in LD ($r^2\sim 0.8$; font color: black). Rs6857 and rs405509, and the respective haplotypes a and b, are in LE ($r^2\sim 0.1$). FTD, frontotemporal dementia; LD, linkage disequilibrium; LE, linkage equilibrium; PD, Parkinson’s disease.

Table 1

Summary data from all GWAS used in the current study

Disease/trait	Total N	# SNPs	Reference
Frontotemporal dementia (FTD)— IFGC phase I	6462	6 026 384	16
Frontotemporal dementia (FTD)— IFGC phase II	6466	Illumina NeuroX Chip	16
Alzheimer's disease (AD)—phase I	54 162	7 055 881	23
Parkinson's disease (PD)	17 352	7 689 524	24

GWAS, genome-wide association studies; IFGC, International FTD-Genomics Consortium.

Author Manuscript

Author Manuscript

Author Manuscript

Author Manuscript

Table 2

Overlapping loci between FTD, PD and AD at a conjunction FDR<0.05

SNP	Position	Chr	Location; nearest gene	Associated phenotype	Min Conj FDR	FTD p-value	Associated phenotype p-value	Direction of effect
rs7664889	77 087 704	4	Intronic; <i>SCARB2</i>	PD	4.84E-02	1.75E-04	8.88E-04	++++
rs9268877	32 431 147	6	Intergenic; <i>HLA-DRA</i>	PD	4.84E-02	1.04E-10	7.41E-04	++++
rs676768	116 030 773	10	Intronic; <i>VWA2</i>	PD	4.27E-02	3.12E-04	6.14E-04	++++
rs10784359	40 445 750	12	Intronic; <i>SLC2A13</i>	PD	3.26E-02	1.58E-04	7.47E-05	++++
rs2893253	107 067 203	13	Intergenic; <i>EFNB2</i>	PD	3.55E-02	2.02E-04	1.11E-04	++++
rs199528	44 843 136	17	Intronic; <i>WNT3</i>	PD	1.80E-02	4.09E-05	9.82E-16	++++
rs1358071	43 803 189	17	Intronic; <i>CRHR1</i>	PD	2.02E-02	4.96E-05	7.76E-15	++++
rs12964543	56 543 095	18	Intronic; <i>ZNF532</i>	PD	2.73E-02	1.12E-04	3.08E-04	++++
rs405509	45 408 836	19	Intergenic; <i>APOE</i>	AD	5.22E-03	1.25E-05	6.16E-70	++++

AD, Alzheimer's disease; FDR, false discovery rate; FTD, frontotemporal dementia; PD, Parkinson's disease.

Author Manuscript

Author Manuscript

Author Manuscript

Author Manuscript

Table 3

Novel SNPs showing association with FTD at conditional FDR<0.05

SNP	Position	Chr	Nearest gene	Reference allele	Associated phenotype	Min Cond FDR	IFGC phase I p-value	IFGC phase I OR (95% CI)	IFGC phase II p-value	IFGC phase II OR (95% CI)	Meta-analysis p-value	Meta-analysis OR (95% CI)
rs4417745	241 225 364	2	Intergenic; <i>OTOS</i>	A	PD	2.73E-02	2.52E-05	1.36 (1.18-1.57)	0.47	1.06 (0.90-1.25)	3.20E-04	1.22 (1.09-1.36)
rs7664889	77 087 704	4	Intronic; <i>SCARB2</i>	T	PD	3.23E-02	1.75E-04	0.73 (0.62-0.86)	0.82	0.98 (0.81-1.18)	3.18E-03	0.83 (0.73-0.94)
rs676768	116 030 773	10	Intronic; <i>VWAZ#</i>	T	PD	4.25E-02	3.12E-04	0.78 (0.68-0.90)	0.55	0.96 (0.82-1.11)	2.40E-03	0.86 (0.78-0.95)
rs1328032	71 420 424	13	Intergenic; <i>DACHI</i>	A	AD	1.38E-02	1.93E-07	0.67 (0.57-0.78)	0.34	0.94 (0.83-1.06)	7.39E-05	0.80 (0.72-0.88)
rs2446406	51 679 783	15	Intronic; <i>GLDN#</i>	A	PD	2.59E-02	7.18E-07	0.81 (0.74-0.88)	0.40	0.96 (0.87-1.06)	2.24E-05	0.87 (0.82-0.93)
rs7184882	73 737 373	16	In orf; <i>LOC101927998</i>	T	AD	4.24E-02	6.64E-07	0.71 (0.62-0.81)	0.08	0.89 (0.78-1.02)	3.08E-06	0.78 (0.71-0.86)
rs199528	44 843 136	17	Intronic; <i>WNT3</i>	T	PD	1.79E-02	4.09E-05	0.82 (0.74-0.90)	0.03	0.89 (0.80-0.99)	9.59E-06	0.85 (0.79-0.91)
rs1358071	43 803 189	17	Intronic; <i>CRHR1</i>	A	PD	2.01 E-02	4.96E-05	1.22 (1.12-1.31)	0.001	1.16 (1.07-1.26)	4.91 E-07	1.19 (1.11-1.27)
rs12964543	56 543 095	18	Intronic; <i>ZNF532#</i>	A	PD	2.71 E-02	1.12E-04	1.24 (1.11-1.38)	0.24	1.05 (0.96-1.15)	9.10E-04	1.12 (1.05-1.2)
rs6857	45 392 254	19	3'-UTR; <i>PVRL2#</i>	T	PD	4.69E-02	7.03E-07	1.31 (1.18-1.46)	4.46E-07	1.37 (1.21-1.55)	2.21E-12	1.34 (1.23-1.45)
rs405509	45 408 836	19	Intergenic; <i>APOE</i>	T	AD	5.26E-03	1.25E-05	1.18 (1.09-1.27)	0.93	1.0 (0.92-1.09)	5.98E-05	1.15 (1.08-1.24)

ORs provided for the reference allele.

AD, Alzheimer's disease; FDR, false discovery rate; FTD, frontotemporal dementia; IFGC, International FTD-Genomics Consortium; PD, Parkinson's disease.

rs676768 not available, proxy SNP rs12782946 from IFGC phase II.

rs2446406 not available, proxy SNP rs2445742 from IFGC phase II.

rs12964543 not available, proxy SNP exm2272683 from IFGC phase II.

rs6857 not available, proxy SNP rs2075650 from IFGC phase II.

Table 4

Summary of eQTL in brain from Braineac and GTEx

eQTL										
Braineac						GTEx				
SNP	bp	Risk allele	Chr	Location	Nearest gene	Gene	Brain region	p-value	Effect of risk allele	Effect of risk allele
rs7664889	77087704	/	4	Intronic	SCARB2	no eQTL				
rs9268877	32431147	A	6	Intergenic	HLA-DRA	HLA-DPA1	Frontal cortex	3.1×10 ⁻⁵	increased expression	HLA-DRB1 HLA-DQA2
rs676768	116030773	/	10	Intronic	VWA2	no eQTL				
rs10784359	40445750	/	12	Intronic	SLC2A13	no eQTL				
rs2893253	107067203	/	13	Intergenic	EFNB2	no eQTL				
rs199528	44843136	C	17	Intronic	WNT3	LRRRC37A2	Temporal cortex	3×10 ⁻⁶	Decreased expression	RP11-259G18.2 LRRRC37A2 KANS1-AS1 RP11-259G18.3 LRRRC37A2 KANS1-AS1 RP11-259G18.2 LRRRC37A
rs199528	44843136	C	17	Intronic	WNT3	LRRRC37A2 KANS1	Temporal cortex Hippocampus	3×10 ⁻⁶ 1×10 ⁻⁵	Decreased expression	RP11-259G18.1 MAPT-AS1 MAPT RP11-259G18.3 KANS1-AS1 LRRRC37A2 RP11-259G18.2 LRRRC37A RP11-259G18.1 MAPT MAPT-AS1 SPPL2C KANS1-AS1
							Cerebellar hemisphere Cerebellum Cortex Frontal cortex Hippocampus Hypothalamus	4.6×10 ⁻¹⁰ 1.6×10 ⁻⁸ 1.3×10 ⁻⁷ 2×10 ⁻²⁵ 3.9×10 ⁻²⁰ 6.2×10 ⁻¹⁹ 1.6×10 ⁻¹⁷ 4×10 ⁻¹³ 1.3×10 ⁻¹² 8.7×10 ⁻¹² 3.6×10 ⁻⁸	Decreased expression Increased expression Increased expression Decreased expression Increased expression Increased expression Decreased expression Decreased expression Increased expression Increased expression	

eQTL												
Braineac						GTEx						
SNP	bp	Risk allele	Chr	Location	Nearest gene	Gene	Brain region	p-value	Effect of risk allele	Brain region	p-value	Effect of risk allele
rs199528	44843136	C	17	Intronic	WNT3	KANSL1	Hippocampus	1×10^{-5}	Decreased expression	Hypothalamus Nucleus accumbens (basal ganglia) Putamen (basal ganglia)	7.6×10^{-15} 1.6×10^{-13} 5.8×10^{-13} 5.6×10^{-8} 1.8×10^{-20} 1.4×10^{-18} 4.9×10^{-17} 3.4×10^{-16} 7.3×10^{-7} 2.5×10^{-19} 6.9×10^{-15} 3.1×10^{-14} 9.6×10^{-11} 1×10^{-6} 1.6×10^{-6}	Decreased expression
rs1358071	43803189	A	17	Intronic	CRHR1	LRRC37A4	Cerebellum Frontal cortex Hippocampus Medulla Occipital cortex Putamen Substantia nigra	7.4×10^{-22} 1.8×10^{-16} 3.6×10^{-10} 4.7×10^{-10} 5.3×10^{-7} 2.7×10^{-8} 1.9×10^{-11} 5.5×10^{-11} 2.2×10^{-6} 7.3×10^{-11} 2.4×10^{-7}	Increased expression	Anterior cingulate cortex Caudate (basal ganglia)	1.9×10^{-11} 1.6×10^{-9} 4.3×10^{-9} 5.3×10^{-8} 7.5×10^{-7} 9.7×10^{-7} 7.3×10^{-15} 1.7×10^{-14} 4.5×10^{-13} 3.1×10^{-12} 2.8×10^{-11}	Increased expression Decreased expression Increased expression Decreased expression

eQTL													
Braineac													
SNP	bp	Risk allele	Chr	Location	Nearest gene	GTE _x				Effect of risk allele			
						Gene	Brain region	p-value	Effect of risk allele				
rs1358071	43803189	A	17	Intronic	<i>CRHR1</i>	LRRC37A4 KANSL1	Temporal cortex Thalamus White matter Hippocampus	3.1×10 ⁻¹² 1.1×10 ⁻⁷ 5.7×10 ⁻¹² 5.2×10 ⁻¹⁰ 7.7×10 ⁻⁶ 6.1×10 ⁻⁷	Increased expression Decreased expression expression expression expression expression	LRRC37A LRRC37A4P PLEKHM1 LRRC37A2 RP11-259G18.2 RP11-259G18.3 RP11-259G18.1 KANSL1-ASI LRRC37A RP11-798G7.5 RP11-707O23.5 FMNL1 CTD-2020K17.1 MAPT LRRC37A4P PLEKHM1 RP11-259G18.3 LRRC37A2 RP11-259G18.2 RP11-707O23.5 RP11-259G18.1 LRRC37A KANSL1-ASI RP11-798G7.5 MAPT	Caudate (basal ganglia) Cerebellar hemisphere Cerebellum	1.1×10 ⁻¹⁰ 6.3×10 ⁻⁶ 1.3×10 ⁻¹⁵ 4.0×10 ⁻¹³ 2.6×10 ⁻¹² 1.5×10 ⁻⁹ 1.9×10 ⁻⁹ 2.6×10 ⁻⁹ 6.1×10 ⁻⁹ 2.5×10 ⁻⁸ 5.9×10 ⁻⁸ 2.8×10 ⁻⁷ 4.2×10 ⁻⁷ 5.2×10 ⁻⁶ 6.6×10 ⁻⁶ 5.3×10 ⁻¹⁸ 4.2×10 ⁻¹⁷ 5.6×10 ⁻¹⁶ 3.3×10 ⁻¹⁵ 6.6×10 ⁻¹⁵ 2.6×10 ⁻¹³ 1.5×10 ⁻¹⁰ 1.7×10 ⁻¹⁰ 7.1×10 ⁻¹⁰ 1.4×10 ⁻⁹ 5.4×10 ⁻⁹	Decreased expression Increased expression expression Decreased expression Increased expression Decreased expression Increased expression Decreased expression Increased expression Increased expression Decreased expression Increased expression Increased expression Increased expression Increased expression Increased expression Increased expression Increased expression Increased expression Increased expression Increased expression
rs1358071	43803189	A	17	Intronic	<i>CRHR1</i>	KANSL1 CRHR1	Hippocampus Medulla	6.1×10 ⁻⁷ 2.9×10 ⁻⁶	Decreased expression expression	MAPT-ASI FMNL1 KANSL1-ASI LRRC37A2 RP11-707O23.5 LRRC37A4P RP11-259G18.3 RP11-259G18.2 CRHR1-IT1 PLEKHM1 RP11-259G18.1 LRRC37A2 LRRC37A4P RP11-259G18.2 KANSL1-ASI RP11-707O23.5 DND1P1	Cerebellum Cortex Frontal cortex Hippocampus	6.2×10 ⁻⁸ 2.7×10 ⁻⁶ 1.5×10 ⁻¹⁴ 1.6×10 ⁻¹¹ 2.7×10 ⁻¹¹ 3.2×10 ⁻¹¹ 5.7×10 ⁻¹¹ 1.3×10 ⁻¹⁰ 1.3×10 ⁻⁸ 9.4×10 ⁻⁷ 7.8×10 ⁻⁶ 2.5×10 ⁻¹¹ 9.3×10 ⁻¹¹ 2.2×10 ⁻¹⁰ 8.2×10 ⁻¹⁰ 9.8×10 ⁻¹⁰	Decreased expression expression Increased expression expression Decreased expression Increased expression Increased expression Decreased expression Increased expression Increased expression Increased expression Decreased expression Decreased expression Decreased expression Increased expression Increased expression Increased expression Increased expression Increased expression Increased expression Increased expression Increased expression

eQTL										
Braineac										
SNP	bp	Risk allele	Chr	Location	Nearest gene	Gene	Brain region	p-value	Effect of risk allele	GTE _x
rs1358071	43803189	A	17	Intronic	<i>CRHR1</i>	CRHR1	Medulla	2.9×10 ⁻⁶	Decreased expression	CRHR1-IT1 MAPT LRR37A4P LRR37A2 RP11-259G18.2 KANS1-AS1 RP11-707O23.5 RP11-259G18.3
rs12964543	56543095	/	18	Intronic	<i>ZNF532</i>	no eQTL			Decreased expression	CRHR1-IT1 DND1P1 LRR37A2 RP11-707O23.5 KANS1-AS1 LRR37A4P RP11-259G18.2 LRR37A4P KANS1-AS1 RP11-707O23.5 LRR37A2 LRR37A2 CRHR1-IT1 LRR37A4P LRR37A2 KANS1-AS1 RP11-707O23.5 RP11-259G18.3 CRHR1-IT1
rs405509	45408836	/	19	Intergenic	<i>APOE</i>	no eQTL			Decreased expression	CRHR1-IT1 DND1P1 LRR37A2 RP11-707O23.5 KANS1-AS1 LRR37A4P RP11-259G18.2 LRR37A4P KANS1-AS1 RP11-707O23.5 LRR37A2 LRR37A2 CRHR1-IT1 LRR37A4P LRR37A2 KANS1-AS1 RP11-707O23.5 RP11-259G18.3 CRHR1-IT1
rs4417745	241225364	/	2	Intergenic	<i>OTOS</i>	no eQTL			Decreased expression	CRHR1-IT1 DND1P1 LRR37A2 RP11-707O23.5 KANS1-AS1 LRR37A4P RP11-259G18.2 LRR37A4P KANS1-AS1 RP11-707O23.5 LRR37A2 LRR37A2 CRHR1-IT1 LRR37A4P LRR37A2 KANS1-AS1 RP11-707O23.5 RP11-259G18.3 CRHR1-IT1
rs1328032	71420424	/	13	Intergenic	<i>DACHI</i>	no eQTL			Decreased expression	CRHR1-IT1 DND1P1 LRR37A2 RP11-707O23.5 KANS1-AS1 LRR37A4P RP11-259G18.2 LRR37A4P KANS1-AS1 RP11-707O23.5 LRR37A2 LRR37A2 CRHR1-IT1 LRR37A4P LRR37A2 KANS1-AS1 RP11-707O23.5 RP11-259G18.3 CRHR1-IT1
rs2446406	51679783	/	15	Intronic	<i>GLDN</i>	no eQTL			Decreased expression	CRHR1-IT1 DND1P1 LRR37A2 RP11-707O23.5 KANS1-AS1 LRR37A4P RP11-259G18.2 LRR37A4P KANS1-AS1 RP11-707O23.5 LRR37A2 LRR37A2 CRHR1-IT1 LRR37A4P LRR37A2 KANS1-AS1 RP11-707O23.5 RP11-259G18.3 CRHR1-IT1
rs7184882	73737373	C	16	In orf	<i>LOC101927998</i>	no eQTL			Decreased expression	CRHR1-IT1 DND1P1 LRR37A2 RP11-707O23.5 KANS1-AS1 LRR37A4P RP11-259G18.2 LRR37A4P KANS1-AS1 RP11-707O23.5 LRR37A2 LRR37A2 CRHR1-IT1 LRR37A4P LRR37A2 KANS1-AS1 RP11-707O23.5 RP11-259G18.3 CRHR1-IT1

eQTL												
Braineac						GTEx						
SNP	bp	Risk allele	Chr	Location	Nearest gene	Gene	Brain region	p-value	Effect of risk allele	Brain region	p-value	Effect of risk allele
rs6857	45392254	T	19	3'-UTR	PVRL2	no eQTL						no eQTL
rs302665	87879627	/	11	Intronic	RAB38	no eQTL						no eQTL
rs10507789	71409940	/	13	Intergenic	DACHI	no eQTL						no eQTL

eQTL, expression quantitative trait loci.