



Review article

Limited Stage Follicular Lymphoma: Current Role of Radiation Therapy

Andrea Riccardo Filippi¹, Patrizia Ciammella² and Umberto Ricardi¹

¹ Department of Oncology, University of Torino, Italy

² Department of Oncology and Advanced Technology, Arcispedale S Maria Nuova-IRCCS of Reggio Emilia, Italy.

Competing interests: The authors have declared that no competing interests exist.

Abstract. Radiation therapy (RT) alone has been considered for a long time as the standard therapeutic option for limited stage FL, due to its high efficacy in terms of local disease control with a quite significant proportion of “cured” patients (without further relapses at 10-15 years). Multiple therapeutic choices are currently accepted for the management of early stage FL at diagnosis, and better staging procedures as well as better systemic therapy partially modified the role of RT in this setting. RT has also changed in terms of prescribed dose as well as treatment volumes. In this review, we present and discuss the current role of RT for limited stage FL in light of the historical data and the modern RT concepts along with the possible combination with systemic therapy.

Citation: Filippi A.R., Ciammella P., Ricardi U. Limited stage follicular lymphoma: current role of radiation therapy. *Mediterr J Hematol Infect Dis* 2016, 8(1): e2016041, DOI: <http://dx.doi.org/10.4084/MJHID.2016.041>

Published: September 1, 2016

Received: June 8, 2016

Accepted: July 18, 2016

This is an Open Access article distributed under the terms of the Creative Commons Attribution License (<http://creativecommons.org/licenses/by/2.0>), which permits unrestricted use, distribution, and reproduction in any medium, provided the original work is properly cited.

Correspondence to: Andrea Riccardo Filippi, M.D. Department of Oncology, University of Torino, San Luigi Gonzaga University Hospital. Regione Gonzole 10, 10043 Orbassano (Torino). Tel: +39 011 9026047. E-mail: andreariccardo.filippi@unito.it

Introduction. Approximately 25% of patients with follicular lymphoma (FL) present with stage I-II disease, the so-called “limited stage”, defined as either a single lymph nodal site or a limited lymphatic region without bone marrow involvement.^{1,2} For a long time, the preferred treatment approach has been radiation therapy (RT) alone, on the basis of several retrospective single-institution series showing a high rate of local disease control, with a proportion of patients (45%) achieving long-term survival without relapses (the only situation where FL has been defined as “curable”).³⁻¹⁶ However, there is a lack of prospective data, and very few retrospective studies have been conducted to compare this treatment modality versus others, including a “wait and see” policy. Recent advances in staging and new therapeutic options partially modified this scenario, and nowadays only 35-50% of patients are being offered RT alone at diagnosis in Unites

States.¹⁷ This reflects a common pattern of practice among hematologists and radio-oncologists worldwide, given the extensive portfolio of therapeutic options. At the same time, RT has evolved towards the use of smaller fields and lower doses, with optimal control rates and minimal toxicity;¹⁸ data on the combination of low dose RT and rituximab became also available.¹⁹ Aim of this review is to present and discuss the current role of RT in this setting.

History of RT Use and Current Indications. The definition of “limited” versus “generalized” FL depends on the definition of “limited” and by the intensity of staging investigations performed at diagnosis.²⁰ Limited disease usually means stage I and contiguous stage II, as some stage II may be considered as generalized due to the presence of extended multiple sites disease (for example abdominal presentations). The presence of bone

marrow involvement classically defines stage IV, however the presence of bone marrow minimal involvement (BCL-2/IgH rearrangement detected by polymerase chain reaction-PCR) has an uncertain significance. Approximately 60-80% of patients with presumed stage I-II disease may have circulating or bone marrow cells with Bcl-2/IgH rearrangement, with an unclear effect on prognosis.²¹ Most of the historical series reporting on outcomes following RT refer to a stage stratification based on clinical/radiological staging. An historical series by Goffinet et al. reported on 206 patients with “nodular” lymphoma where 31% of patients had stage I-II based on physical examination and imaging, but only 12% remained stage I-II after laparotomy/splenectomy for marrow negative patients.²² As the quality of imaging improved, together with the introduction of new modalities such as positron emission tomography (PET), a lower proportion of patients now present with stage II disease. In fact, truly localized disease is probably a rare entity, and few reports in the literature have sufficient magnitude for comparing clinical results after modern staging, since the patients’ accrual for most series took many years and the follow up interval for detecting relapses is at least 10 years.²⁰ After RT the majority of the lesions completely regress, and local relapse at an irradiated site is rare. Recurrences usually occur distantly from the RT site and are rare after 10 years (1-11%). Probably the largest retrospective study on stage I or II FL included 568 patients diagnosed between 1973 and 2004, and was based on Surveillance Epidemiology and End Result (SEER) data.²³ In 34 % of these patients, RT was used as the initial treatment; the group receiving RT at the onset had higher rates of disease-specific survival (DSS) at 5 years (90 vs. 81%), 10 years (79 vs. 66%), 15 years (68 vs. 57%), and 20 (63 vs. 51%) years, respectively. The rationale for the use of RT is thus based on the results of large mono-institutional experiences or observational cohort studies, which has been incorporated by international cooperative groups and clinical guidelines such as the National Comprehensive Cancer Network (NCCN), the European Society of Medical Oncology (ESMO) and the Italian Society of Hematology-Bone Marrow Transplantation Group (SIE-GITMO).²⁴⁻²⁶ **Table 1** summarizes the results of the major studies on RT use for limited stage FL at diagnosis. Despite these indications, a

recent observational study by the National Lymphocare project showed that variable treatment approaches are currently proposed to stage I-II FL patients: “wait and see” policy, chemotherapy, RT, Rituximab alone or systemic therapy plus RT.¹⁷ All these alternative treatments actually have excellent outcomes (median follow-up of 57 months). Interestingly, a subgroup of 206 patients who were rigorously staged, with bone marrow aspirate and biopsy and CT scan or PET scan or both, had increased survival. Among this patients’ cohort approximately 30% with confirmed stage I at PET-CT were offered RT alone as frontline therapy. With regards to the “wait and see” approach, researchers from Stanford University previously reported on a series of 43 selected patients with limited stage FL untreated at diagnosis who had a comparable outcome with those treated with RT alone.²⁷ Soubeyran et al.²⁸ also studied 43 patients with stage I follicular lymphoma been completely resected; 26 patients, accrued over an 11-years period, were selected for a “wait-and-see” policy (those had the lowest suspicion of residual disease): with a median follow up of 6.3 years, 13/26 (50%) relapsed, 6 locally and 7 distantly.

Nowadays, the evidence in favor of the use of RT at diagnosis for limited stage FL still relies on its curative potential: as shown in **Table 1**, historical series of more than 100 patients showed progression-free survival (PFS) rates at 10 years ranging from 40 to 59%, and overall survival rates of 58-86%.^{5,7,9,10,14,15} These series include patients treated as long ago as the 1970s, with implications regarding histological classification, staging procedure and systemic therapy. Despite the relative similarity of the outcome projections at 10 years, differences also exist among the reported series with regards to radiation volumes and dose, with a potential impact on late toxicity. The long-term survival outcome after RT alone for properly staged stage I-II FL patients, treated with modern fields and doses, is yet to be reported. Overall survival (OS) has apparently increased in recent years due to the introduction of Rituximab also for limited stage FL,^{17,29} but PFS after RT alone remained in this range, with approximately 45% of patients without relapses at 10 years.

RT Volumes. From previously cited series, limited radiation volumes (involved field RT: IFRT) seem to be sufficient for disease control in

Table 1. Clinical outcomes of RT for limited stage FL.

Authors	Pts (n)	Total RT dose (Gy)	RT Volume	Follow-up yrs.	PFS (%)	OS (%)
Chen et al, 1979 ³	26	35-45	IF or EF		6-yr 83	NS
Paryani et al, 1983 ⁴	124	35-50	IF,EF,TNI	5,5	5-yr 62 10-yr 54 15-yr 42	5-yr 84 10-yr 68 15-yr 40
Gospodarowicz et al, 1984 ⁵	248	20-50 (<35 Gy in 86%)	IF	12	5-yr 56 10-yr 53	5-yr 73 10-yr 58
Epelbaum et al, 1992 ⁶	48	30-50	IF, EF	6,3	5-yr 71 10-yr 57	5-yr 83 10-yr 68
Vaughan Hudson et al, 1996 ⁷	208	35	NS	10	10-yr 47	10-yr CSS 71-84
Pendlebury et al, 1995 ⁸	58	30-54	IF,EF	NS	5-yr 59 10-yr 43	5-yr 93 10-yr 79
MacManus et al, 1996 ⁹	177	35-44	IF,EF,TNI	7,7	5-yr 55 10-yr 44 15-yr 40	5-yr 82 10-yr 64 15-yr 44
Stuschke et al, 1997 ¹⁰	117	26 + 10	EF,TNI	5,7	5-yr 71 10-yr 59	5-yr 86 10-yr 86
Kamath et al, 1999 ¹¹	72	NS	IF,EF,TNI	NS	5-yr 62 10-yr 59 15-yr 47	5-yr 73 10-yr 46 15-yr 40
Wilder et al, 2001 ¹²	80	26-50	IF,EF	19	5-yr 63 10-yr 57 15-yr 41	5-yr 82 10-yr 65 15-yr 43
Ott et al, 2003 ¹³	58	26-50	IF,EF,TNI	8,8	5-yr 74 10-yr 64	5-yr 86 10-yr 69
Neumann et al, 2003 ¹⁴	116	20-50	IF,EF,TNI	4	5-yr 62 10-yr 48	5-yr 76 10-yr 51
Petersen et al, 2004 ¹⁵	460	16-47.5	IF	12.5	5-yr 56 10-yr 41	5-yr 79 10-yr 62
Eich et al, 2009 ¹⁶	65	26-46	IF,EF,TNI	9.1	5-yr 55 10-yr 37	5-yr 86 10-yr 55

Abbreviations: IF (involved field); EF (extended field); TNI (total nodal irradiation); NS (not specified); CSS (cancer specific survival).

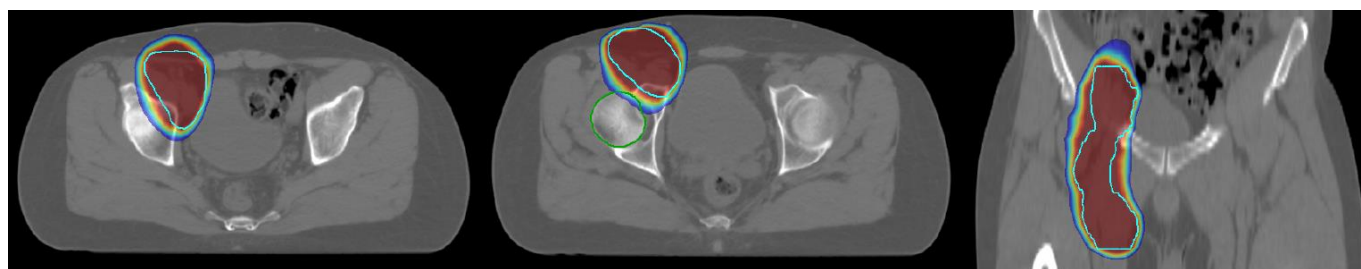


Figure 1. Example of involved site radiotherapy in a case of a 43 years old male patient affected with limited stage FL (right inguinal and crural nodes).

limited stage FL. In fact, no differences in OS were reported by series including patients treated with either limited or more extensive radiation fields (e.g. extended fields RT (EFRT) or total nodal irradiation (TNI)). However, as expected, many retrospective studies observed that larger volumes resulted in higher PFS rates.^{4,6} For example, the Stanford University group showed

that Total Lymphoid Irradiation (TLI) was associated with a lower relapse rate at 5 and 10 years (23% and 33%, respectively) compared with treatment to one side of the diaphragm only (52% and 64%, respectively).⁴ In these series, two thirds of deaths were due to other causes. At this regard, there are concerns that larger irradiation volumes might increase the risk of acute (e.g.

hematological or gastrointestinal symptoms) and late (e.g. second tumors or cardiovascular disease) toxic effects.⁹ Wilder et al.¹² found no differences in cause-specific survival (15 years: 59% vs. 72%) and OS (15 years: 49% vs. 40%) between patients treated with EFRT vs. IFRT. A large proportion of relapses (93%) involved the side of the diaphragm opposite the original site of disease and 59% exclusively affected the opposite side of the diaphragm. A German prospective multicenter phase II trial study investigated the influence of EF and total lymphoid irradiation on PFS, pattern of relapse and OS, showing no difference at 5 and 7 years between larger or smaller fields.¹⁰

IFRT for FL is traditionally defined as for Hodgkin's lymphoma, including clearly defined "regions" of the Ann Arbor classification system,¹⁸ but a modern approach to more limited radiation fields has been developed in recent years following radical changes occurred for the radiation treatment of HL, introducing the so-called "involved nodal radiotherapy" (INRT) volumes.³⁰ Unlike classic IFRT, INRT limits the treatment to only pre and post-chemotherapy involved nodal volumes. INRT is based on optimal pre-treatment imaging, taking into account pre-chemotherapy CT and FDG-PET scans. However, this concept does not simply apply to FL, as INRT was developed for Hodgkin's Lymphoma (HL) for consolidation after chemotherapy, and not as a single modality curative approach. In FL, nodes that are "at risk" (i.e., minimally involved nodes that may be negative on PET imaging but involved by microscopic disease), should be included within radiation volumes in the absence of an active systemic therapy, as the likelihood of involvement is too great to be ignored.²⁰ The International Lymphoma Radiation Oncology Group (ILROG) has thus developed specific consensus guidelines for the delineation of RT volumes for non-Hodgkin's lymphomas that are slightly different from those developed for HL:³¹ the new concept, defined as "involved site radiotherapy" (ISRT), has been adopted by the NCCN and provides the basis for the current RT protocols.²⁴ Although ISRT for NHL has not yet been validated through randomized trials, single-arm and retrospective data suggest comparable disease control to IFRT. A study from Vancouver looked retrospectively at patients that with limited stage FL treated either with IFRT or with a smaller field limited to the involved site.³² At a median

follow-up of 7.5 years, both the larger and the smaller fields yielded excellent local control. Only 1% of patients who were treated with the smaller fields approach relapsed in adjacent regional nodes and there was no difference with respect to distant failure between the two groups (involved site 32 %, IFRT 38%).

In this context, the clinical target volumes identification for FL now requires consideration of quality/accuracy of imaging, expected patterns of spread, potential subclinical disease and adjacent organs at risk constraints. ISRT actually maintains the original intent of IFRT, but reduces the planned radiation volume through an optimized use of modern imaging. This change in RT volumes reduces radiation exposure to organs at risk, reducing as well the risk of late toxicity.

RT Dose. The curative radiation dose for localized FL has been in the range 36-45 Gy for a long time, as derived from early studies (**Table 1**). Within this dose range, local control reached approximately 90-95%, as already reported by Fuks and Kaplan in 1973.³³ A series of studies from Princess Margaret Hospital further defined dose-response curves for both DLBCL and FL.³⁴ For patients with medium or large-bulk disease (2.5-5 cm and >5 cm, respectively), 50% local control rate was achieved with a dose of 20 Gy, reaching 70% at 30 Gy and 80% at 40 Gy, with a plateau thereafter. For FL, doses in the range 25-35 Gy are able to obtain a local control rate >90%.⁵ Similar data were reported in a more contemporary series from University of Florida,¹¹ with 30 Gy achieving local control in again >90% of patients. Stuschke et al.¹⁰ recommended a total dose of 30 Gy to lymph nodes with suspected subclinical disease and a total dose of 36-44 Gy to macroscopically involved lymph nodes. Nevertheless, in the "old" series many investigators noted that a significant number of patients with FL were controlled with a dose of <30 Gy.³⁵ These findings led to the design of a randomized phase III study from the United Kingdom, comparing the standard dose of 40-45 Gy to 24 Gy in 361 involved sites of patients with indolent lymphomas (mostly FL and marginal zone B-cell lymphomas -MZL- in early stages).³⁶ At a median follow-up of 5.6 years, there was no difference in overall response (93% and 92%, respectively) between the standard and the lower dose arms. There was also no difference in PFS or

OS, and 24 Gy was thus established as the standard dose for treating limited-stage indolent non-Hodgkin's lymphomas, including FL.

Very low-dose RT, largely used in the past years as palliation with total body irradiation, has also been proved to be effective in indolent NHL, particularly in FL. A radiation schedule of 4 Gy in 2 fractions was firstly shown to be highly effective when used for palliation of advanced-stage, relapsing, or even post multiple chemotherapy refractory patients with indolent lymphomas by Ganem et al.³⁷ Girinsky et al. subsequently achieved an overall response rate (ORR) of 81%, with a median duration of response of 24 months and freedom from local progression of 56% at two years, on 48 patients classified as low-grade NHL according to the Working Formulation.³⁸ A subsequent prospective study by Johansson et al. including 15 patients with FL confirmed a high ORR (87%), with a median duration of response of 22 months.³⁹ A further study on 109 patients, including 98 FL, previously treated with multiple lines of chemotherapy, reported an ORR of 92%, and median duration of response and time to progression of 42 and 25 months, respectively.⁴⁰ Murthy et al. also assessed the impact of low-dose RT on patients' quality of life (European Organization for Research and Treatment of Cancer EORTC QLQ-C30), highlighting that low-dose RT was very well tolerated and had almost no impact.⁴¹ Regarding predictive/prognostic factors, Girinsky et al. reported lower PFS rates for patients previously treated with more than two chemotherapy lines, and lower response rates for masses larger than 5 cm and patients treated at age > 65 years.³⁸ Haas et al.⁴⁰ found no correlation between age, sex, follicular lymphoma grade, RT regimen, number of previous regimens and previous history, number of positive sites or largest lymphoma diameter and response rate; conversely, Russo et al.⁴² showed that patients aged <50 years had lower PFS rates (and also those with CLL histology in comparison with other indolent NHL subtypes).

Following these positive results, a randomized phase III trial was then conducted to compare standard dose (24 Gy/12 fractions) vs. low dose RT (4 Gy/2 fractions) as frontline radical or palliative treatment in FL and MZL.⁴³ A total of 614 sites in 548 patients with FL (and some with MZL) were prospectively randomized to receive either 24 Gy or 4 Gy. In 60% of patients, the intent

of RT was considered as palliative, and in 40% as curative. This study showed a higher ORR (81% vs. 74%) and 2-year PFS rate (94% vs. 80%) for 24 Gy vs. 4 Gy; thus 24 Gy remained the standard RT dose for the curative treatment of limited stage FL and MZL when radiation is administered as exclusive therapy. **Table 2** summarizes the results of selected studies testing very low-dose RT for limited stage FL.

Combination with Chemotherapy. As underlined in a recent comprehensive review,²⁰ almost no studies reporting on the combination of RT and systemic therapy for stage I-II FCL were adequately powered to test for a difference in survival between RT vs. RT plus chemotherapy, given the rarity of early stage FCL. The British National Lymphoma Investigation (BNLI) conducted a trial between 1974 and 1980, where patients with Ann Arbor Stage I-II disease were treated with involved field RT alone to 35 Gy. Patients were then randomized to no further therapy (n=55) vs. chlorambucil 0.2 mg/kg/day orally for 8 weeks, followed by 0.1 mg/kg/day for 16 weeks (n=50). No significant differences in PFS or OS were detected between the two arms.⁴⁴ One large non-randomized trial has been reported by Seymour et al.,⁴⁵ on 85 patients with stage I-II FL who received 3 cycles of chemotherapy followed by involved field RT (30-40 Gy) followed by cyclophosphamide, vincristine, prednisone, and bleomycin (COP-Bleo) for 7 cycles; patients with extra-nodal involvement, bulky disease (>5 cm.), or an elevated LDH also received doxorubicin (CHOP-Bleo). Ten-year freedom from treatment failure was 76%, and OS 82%. These appear both substantially better than results reported above for RT alone (however, this was not a randomized trial, and similar results have not been reported by others). Guadagnolo et al.⁴⁶ reported on a series of 106 patients treated with IFRT +/- chemotherapy. There was no significant difference in PFS between patients who received chemotherapy and those who did not. The 10- and 15-year PFS rates were 47% and 43%, and 46% and 31% for patients treated with RT and with combined chemotherapy and RT, respectively ($p=0.72$). Patients were treated between 1972 and 2000, and interestingly, with very long-term follow-up, the incidence of secondary malignancies was not increased in this population in comparison with the expected incidence.

Table 2. Studies on low dose RT for FL.

Authors	Pts (n)	Histology	Stage	Dose/fx	Response rate	Survival	Toxicity
Girinsky et al, 2001 ³⁸	48	Low grade	I 15% II 23% III 27% IV 31%	4 Gy/2 fx	CR 57% PR 24%	Median duration of response: 24 months 2yr FFLP 56%	No events
Johannsson et al, 2002 ³⁹	15	Indolent NHL	Advanced	4 Gy/2 fx	CR 74% PR 13%	Median duration of response: 22 months	No events
Haas et al, 2003 ⁴⁰	109	Indolent NHL (FL=98),	Advanced (52% bulky)	4 Gy/2 fx	CR 61% PR 31% SD 6% PD 2%	Median duration of response: 42 months Median TTLP: 25 months PFS1yr 50% PFS2yrs 33% PFS3yrs 25% PFS5yrs 10%	No events
Murthy et al, 2008 ⁴¹	29	Indolent NHL	Advanced	4 Gy/2 fx	ORR 86%	NR	No events ≥ G2
Russo et al, 2012 ⁴²	127	Indolent NHL (including CLL)	I (16%) II (10%) III (31%) IV 43%)	4 Gy/2 fx	CR 57% PR 25%	TTP 13.6 months	No events

Abbreviations: NHL (non-Hodgkin's lymphoma); FFLP (freedom from local progression); TTLP (time to local progression); PFS (progression free survival); CLL (chronic lymphatic leukemia); CR (complete response); PR (partial response); SD (stable disease); PD (progressive disease), ORR (overall response rate); NR (not reported).

A retrospective series by Michallet et al. also reported a substantial equivalence in OS for patients treated at diagnosis with either chemotherapy-RT or RT alone; a possible explanation for the observed differences in PFS but not OS for the combination of chemotherapy and RT could be the good response rate at relapse to R-chemotherapy for patients who only received RT as first line therapy at diagnosis. OS was better for patients treated after the year 2000. A small group was also treated with chemoimmunotherapy upfront, with excellent results.²⁹

Combination with anti-CD20. As previously mentioned, the role of combined radio-chemotherapy in the management of limited-stage FL is uncertain, due to the reported significant toxicity, unclear superiority, and the fact that these studies were conducted in the pre-rituximab era. The introduction of the anti-CD20 antibody rituximab has radically changed the therapeutic options for patients with FL.^{47,48} Rituximab has been proposed as an alternative option to the watchful waiting approach in low-tumor burden advanced stage FL, and a recent multicenter randomized trial has shown the advantage of Rituximab vs. watch and wait for policy regarding PFS, although no advantages have been reported for OS.⁴⁹ These promising results, as well as another phase II clinical trials, demonstrated a

significant single agent activity of rituximab in both pretreated and untreated patients with FL.⁵⁰

Furthermore, rituximab may contribute in eliminating the minimal residual disease in advanced disease⁵¹ and may enhance radiation-induced apoptosis and cell growth delay.^{52,53} The findings of these studies on advanced stage-low tumor burden FL cannot be directly extended to the limited stage. Nonetheless they provide the basis for a theoretically successful combination with RT for stage I-II disease, by increasing disease control outside radiation fields. At this regard, a case-cohort study by Ruella et al.¹⁹ showed for the first time that 4 doses of Rituximab followed by IFRT was a very well tolerated regimen able to reach a 10-year PFS rate of 64.6%, in comparison to the 50.7% rate achieved in control patients treated with RT alone for stage I-II FL (p<0.05). This superiority in PFS might translate into better long-term disease control and cure rate. Interestingly, this study also showed that among Rituximab-RT-treated patients, those with minimal bone marrow disease at baseline (PCR positivity) were at higher risk of relapse (6/10, 60%) compared to those with PCR negativity (4/23,17%), despite the use of Rituximab. This data stresses the importance of the evaluation and monitoring of molecular disease also in patients with low tumor burden, as this is probably one of

the most important prognostic factors for relapse after both RT alone and RT-Rituximab. In fact, even with the addition of rituximab to RT, about 35% of patients do progress, and in particular patients with molecular disease positivity at diagnosis are at increased risk of relapse. Similar data were reported by Pulsoni et al. in a previous study, then updated.^{54,55} Fifty-seven consecutive patients treated with RT for limited stage FL were analyzed, and 38/57 (66.7%) had the molecular disease either in the bone marrow or peripheral blood despite a negative biopsy. Of these, 19/38 (50%) became negative after RT, and some patients with persistent positivity received Rituximab. However, the presence of molecular disease at diagnosis resulted to be associated with a worse prognosis despite the use of RT followed by Rituximab (10/11 relapses were PCR positive). Therefore, it could be reasonable in the future either to increase the initial dose of rituximab, with four additional doses after RT or to start maintenance at RT. This approach might be considered at least in patients presenting with the PCR-detectable disease at baseline. The MD Anderson Cancer Center is currently enrolling patients in a clinical trial offering a 2-yr maintenance after induction with rituximab-RT (NCT01473628). The MIR study, a phase II study of the German Low-Grade Lymphoma Study Group (GLSG), was designed with the first block of 4 rituximab doses, a 4 weeks gap with a restaging CT / planning CT of the involved nodal region in week 7 and then another block of 4 rituximab doses given concurrently with IFRT (40 Gy for macroscopic tumor or 30 Gy in case of CR). The primary endpoint of the study was PFS at two years, and preliminary data presented at the American Society of Hematology (ASH) 2012 meeting were encouraging, with a 2-yr PFS of 90%.⁵⁶

References:

1. Anderson T, Chabner BA, Young RC et al. Malignant lymphoma. 1. The histology and staging of 473 patients at the National Cancer Institute. *Cancer* 1982;50:2699-707. [http://dx.doi.org/10.1002/1097-0142\(19821215\)50:12<2699::AID-CNCR2820501202>3.0.CO;2-A](http://dx.doi.org/10.1002/1097-0142(19821215)50:12<2699::AID-CNCR2820501202>3.0.CO;2-A)
2. Jacobson CA, Freedman AS. Early stage follicular lymphoma, current management and controversies. *Curr Opin Oncol*. 2012;24:475-9. <http://dx.doi.org/10.1097/CCO.0b013e328356898b> PMID:22820411
3. Chen MG, Prosnitz LR, Gonzalez-Serva A, et al. Results of radiotherapy in control of stage I and II non-Hodgkin's lymphoma. *Cancer* 1979;43:1245-1254 [http://dx.doi.org/10.1002/1097-0142\(197904\)43:4<1245::AID-CNCR2820430412>3.0.CO;2-Z](http://dx.doi.org/10.1002/1097-0142(197904)43:4<1245::AID-CNCR2820430412>3.0.CO;2-Z)
4. Paryani SB, Hoppe RT, Cox RS, Colby TV, Rosenberg SA, Kaplan HS. Analysis of non-Hodgkin's lymphomas with nodular and favorable histologies, stages I and II. *Cancer* 1983;52(12):2300-7. [http://dx.doi.org/10.1002/1097-0142\(19831215\)52:12<2300::AID-CNCR2820521224>3.0.CO;2-Y](http://dx.doi.org/10.1002/1097-0142(19831215)52:12<2300::AID-CNCR2820521224>3.0.CO;2-Y)
5. Gospodarowicz MK, Bush RS, Brown TC, et al. Prognostic factors in nodular lymphomas: A multivariate analysis based on the Princess Margaret Hospital experience. *Int J Radiat Oncol Biol Phys* 1984;10:489-497 [http://dx.doi.org/10.1016/0360-3016\(84\)90028-2](http://dx.doi.org/10.1016/0360-3016(84)90028-2)
6. Epelbaum R, Kuten A, Coachman NM, et al. Stage I-II low grade non-Hodgkin's lymphoma: Prognostic factors and treatment results. *Strahlenther Onkol* 1992;168:66-72 PMID:1542848
7. Vaughan Hudson B, Vaughan Hudson G, MacLennan KA et al.

Conclusions and Future Perspectives. A moderate dose (24 Gy) Involved-site RT (ISRT) may cure approximately half of limited stage FL patients, with negligible acute and apparently no virtual late toxicity. Small radiation volumes are currently used for all localizations, including extra-nodal presentations. A high response rate is also achievable with very low dose RT (2 x 2 Gy), even in heavily pretreated patients; this option is now widely acknowledged to be very active as palliative treatment or frontline choice in selected cases. The combination of RT and anti-CD20 antibodies seems promising and might offer better long-term disease control; however, patients with molecular disease in the bone marrow or peripheral blood at diagnosis seem to be at high risk of relapse despite the use of RT plus rituximab. A trend towards a better survival is expected for patients staged with modern imaging, particularly with the use of CT-PET. Future perspectives in this field include the combination of RT with new targeted agents and immunotherapy, especially for those patients considered at higher risk of relapse; new generation anti-CD20 antibodies will probably further improve results. Limitations in the use of RT at diagnosis consist of the variety of therapeutic options for limited stage FL, including wait and see, without proven superiority of one modality vs. the other; given the rarity of the truly localized disease, it is unlikely that such data will become available over the next years. In consideration of its high efficacy (with a consistent proportion of patients without relapse at 15 years) and very low morbidity, modern RT maintains its role as a first choice treatment for the majority FL patients presenting with stage I-II disease at diagnosis.

- Clinical stage I non-Hodgkin's lymphoma: long-term follow-up of patients treated by the British National Lymphoma Investigation with radiotherapy alone as initial therapy. *Br J Canc* 1996;69:1088-93. <http://dx.doi.org/10.1038/bjc.1994.213>
8. Pendlebury S, el Awadi M, Ashley S, et al. Radiotherapy results in early stage low grade nodal non-Hodgkin's lymphoma. *Radiother Oncol* 1995;36(3):167-71. [http://dx.doi.org/10.1016/0167-8140\(95\)01600-L](http://dx.doi.org/10.1016/0167-8140(95)01600-L)
 9. Mac Manus MP, Hoppe RT. Is radiotherapy curative for stage I and II low-grade follicular lymphoma? Results of a long-term follow-up study of patients treated at Stanford University. *J Clin Oncol* 1996;14(4):1282-90. PMID:8648385
 10. Stuschke M, Hoederath A, Sack H, et al. Extended field and total central lymphatic radiotherapy in the treatment of early stage lymph node centroblastic-centrocytic lymphomas: Results of a prospective multicenter study. *Cancer* 1997;80: 2273-2284. [http://dx.doi.org/10.1002/\(SICI\)1097-0142\(19971215\)80:12<2273::AID-CNCR9>3.0.CO;2-V](http://dx.doi.org/10.1002/(SICI)1097-0142(19971215)80:12<2273::AID-CNCR9>3.0.CO;2-V)
 11. Kamath SS, Marcus RB Jr, Lynch JW, Mendenhall NP. The impact of radiotherapy dose and other treatment-related and clinical factors on in-field control in stage I and II non-Hodgkin's lymphoma. *Int J Radiat Oncol Biol Phys* 1999;44(3):563-8. [http://dx.doi.org/10.1016/S0360-3016\(99\)00051-6](http://dx.doi.org/10.1016/S0360-3016(99)00051-6)
 12. Wilder RB, Jones D, Tucker SL, et al. Long-term results with radiotherapy for stage I-II follicular lymphomas. *Int J Radiat Oncol Biol Phys* 2001;51(5):1219-27. [http://dx.doi.org/10.1016/S0360-3016\(01\)01747-3](http://dx.doi.org/10.1016/S0360-3016(01)01747-3)
 13. Ott OJ, Rödel C, Gramatzki M, Niedobitek G, Sauer R, Grabenbauer GG. Radiotherapy for stage I-III nodal low-grade non-Hodgkin's lymphoma. *Strahlenther Onkol* 2003;179(10):694-701. <http://dx.doi.org/10.1007/s00066-003-1062-8> PMID:14566478
 14. Neumann H, Blanck H, Koch R, Fiedler S, Lesche A, Herrmann T. Follicle centre lymphoma: treatment results for stage I and II. *Strahlenther Onkol*. 2003;179(12):840-6. <http://dx.doi.org/10.1007/s00066-003-1025-0> PMID:14652673
 15. Petersen PMGM, Tsang R et al. Long-term outcome in stage I and II follicular lymphoma following treatment with involved field radiation therapy alone. *J Clin Oncol* 2004;22(14s):652.
 16. Eich HT, Heimann M, Stützer H, Kriz J, Reiser M, Müller RP. Long-term outcome and prognostic factors in early-stage nodal low-grade non-hodgkin's lymphomas treated with radiation therapy. *Strahlenther Onkol*. 2009;185(5):288-95. <http://dx.doi.org/10.1007/s00066-009-1937-4> PMID:19440667
 17. Friedberg JW, Byrtek M, Link Bk et al. Effectiveness of first-line management strategies for stage I follicular lymphoma: analysis of the national Lymphocare study. *J Clin Oncol* 2012;30(27):3368-75. <http://dx.doi.org/10.1200/JCO.2011.40.6546> PMID:22915662 PMID:PMC3675665
 18. Yahalom J. Radiotherapy of follicular lymphoma: updated role and new rules. *Curr Treat Op Oncol* 2014;15:262-68. <http://dx.doi.org/10.1007/s11864-014-0286-4> PMID:24700284 PMID:PMC4046077
 19. Ruella M, Filippi AR, Bruna R et al. Addition of Rituximab to involved field radiotherapy prolongs progression-free survival in stage I-II follicular lymphoma: results of a multicenter study. *Int J Radiat Oncol Biol Phys* 2016 Mar 15;94(4):783-91. <http://dx.doi.org/10.1016/j.ijrobp.2015.12.019> PMID:26972651
 20. Hoppe RT. Treatment strategies in limited stage follicular NHL. *Best Prac Oncol Hematol* 2011;24:179-186. <http://dx.doi.org/10.1016/j.beha.2011.02.008> PMID:21658617
 21. Pulsoni A, Starza ID, Frattarelli N et al. Stage I/II follicular lymphoma: spread of bcl-2/IgH+ cells in blood and bone marrow from primary site of disease and possibility of clearance after involved field radiotherapy. *Brit J Haematol* 2007;137(3):216-20. <http://dx.doi.org/10.1111/j.1365-2141.2007.06545.x> PMID:17408460
 22. Goffinet DR, Warnke R, Dunnick NR et al. Clinical and surgical (laparotomy) evaluation of patients with non-Hodgkin's lymphomas. *Canc Treat Rep* 1977;61(6):981-92. PMID:902261
 23. Pugh TJ, Ballonoff A, Newman F, et al. Improved survival in patients with early stage low-grade follicular lymphoma treated with radiation: a Surveillance, Epidemiology, and End Results database analysis. *Cancer* 2010;116:3843-51. <http://dx.doi.org/10.1002/encr.25149> PMID:20564102
 24. National Comprehensive Cancer Network (NCCN) guidelines version 3.2016: www.nccn.org.
 25. Dreyling M, Ghielmini M, Marcus R et al. Newly diagnosed and relapsed follicular lymphoma: ESMO Clinical Practice Guidelines for diagnosis, treatment and follow-up. *Ann Oncol* 2014;25(S3):iii76-iii82. <http://dx.doi.org/10.1093/annonc/mdu200> PMID:25122695
 26. Zinzani PL, Marchetti M, Billio A et al. SIE, SIES, GITMO revised guidelines for the management of follicular lymphoma. *Am J Hematol* 2013;88(3):185-92. <http://dx.doi.org/10.1002/ajh.23372> PMID:23339086
 27. Advani R, Rosenberg SA, Horning SJ. Stage I and II follicular non-Hodgkin's lymphoma: long-term follow-up of no initial therapy. *J Clin Oncol* 2004;22:1454-9. <http://dx.doi.org/10.1200/JCO.2004.10.086> PMID:15024027
 28. Soubeyran P, Eghbali H, Trojani M, et al. Is there any place for a wait-and-see policy in stage I follicular lymphoma? A study of 43 consecutive patients in a single center. *Ann Oncol* 1996;7(7):713-8. <http://dx.doi.org/10.1093/oxfordjournals.annonc.a010720> PMID:8905029
 29. Michallet AS, Lebras LL, Bauwens DD et al. Early stage follicular lymphoma: what is the clinical impact of the first-line treatment strategy? *J Hematol Oncol* 2013;6:45. <http://dx.doi.org/10.1186/1756-8722-6-45> PMID:23816219 PMID:PMC3723590
 30. Girinsky T, van der Maazen R, Specht L, et al. Involved-node radiotherapy (INRT) in patients with early Hodgkin lymphoma: concepts and guidelines. *Radiother Oncol* 2006; 79(3):270-77. <http://dx.doi.org/10.1016/j.radonc.2006.05.015> PMID:16797755
 31. Illidge T, Specht L, Yahalom J et al. Modern radiation therapy for nodal non Hodgkin lymphoma target definition and dose guidelines from the International Lymphoma Radiation Oncology Group (ILROG). *Int J Rad Oncol Biol Phys* 2014;89(1):49-58. <http://dx.doi.org/10.1016/j.ijrobp.2014.01.006> PMID:24725689
 32. Campbell BA, Voss N, Woods R et al. Long-term outcomes for patients with limited stage follicular lymphoma: involved regional radiotherapy versus involved node radiotherapy. *Cancer* 2010;116:3797-806. <http://dx.doi.org/10.1002/encr.25117> PMID:20564082
 33. Fuks Z, Kaplan H. Recurrence rates following radiation therapy of nodular and diffuse malignant lymphomas. *Radiology* 1973;108:675-79. <http://dx.doi.org/10.1148/108.3.675> PMID:4579361
 34. Sutcliffe SB, Gospodarowicz MK, Bush RS et al. Role of radiation therapy in localized non-Hodgkin's lymphoma. *Radiother Oncol* 1985;4(3):211-23. [http://dx.doi.org/10.1016/S0167-8140\(85\)80086-4](http://dx.doi.org/10.1016/S0167-8140(85)80086-4)
 35. Musshoff K, Leopold H. On the question of the tumoricidal dose in non-Hodgkin's lymphomas. *Recent Results Cancer Res*. 1978;65:203-6. http://dx.doi.org/10.1007/978-3-642-81249-1_25 PMID:106447
 36. Lowry I, Smith P, Qian W et al. Reduced dose radiotherapy for local control in non-Hodgkin lymphoma: a randomised phase III trial. *Radiother Oncol* 2011;100:86-92. <http://dx.doi.org/10.1016/j.radonc.2011.05.013> PMID:21664710
 37. Ganem G, Cartron G, Girinsky T et al. Localized low-dose radiotherapy for follicular lymphoma: history, clinical results, mechanism of action, and future outlooks. *Int J Radiat Oncol Biol Phys* 2010;78(4):975-82. <http://dx.doi.org/10.1016/j.ijrobp.2010.06.056> PMID:20970029
 38. Girinsky T, Guillot-Vals D, Koscielny S, et al. A high and sustained response rate in refractory or relapsing low-grade lymphoma masses after low-dose radiation: analysis of predictive parameters of response to treatment. *Int J Radiat Oncol Biol Phys* 2001; 51:148-55 [http://dx.doi.org/10.1016/S0360-3016\(01\)01626-1](http://dx.doi.org/10.1016/S0360-3016(01)01626-1)
 39. Jóhannsson J, Specht L, Mejer J, Jensen BA. Phase II study of palliative low-dose local radiotherapy in disseminated indolent non-Hodgkin's lymphoma and chronic lymphocytic leukemia. *Int J Radiat Oncol Biol Phys*. 2002 Dec 1;54(5):1466-70. [http://dx.doi.org/10.1016/S0360-3016\(02\)03050-X](http://dx.doi.org/10.1016/S0360-3016(02)03050-X)
 40. Haas RL, Poortmans P, de Jong D, et al. High response rates and lasting remissions after low-dose involved field radiotherapy in indolent lymphomas. *J Clin Oncol* 2003; 21:2474-80 <http://dx.doi.org/10.1200/JCO.2003.09.542> PMID:12829665
 41. Murthy V, Thomas K, Foo K, et al. Efficacy of palliative low-dose involved-field radiation therapy in advanced lymphoma: a phase II study. *Clin Lymph Myel* 2008; 4:241-45. <http://dx.doi.org/10.3816/CLM.2008.n.032> PMID:18765312
 42. Russo A, Chen Y, Neil E, et al. Low-dose involved-field radiation in the treatment of non-hodgkin's lymphoma: predictors of response and treatment failure. *IJROBP* 2013; 86: 121.127

43. Hoskin P, Popova B, Brammers C, et al. FoRT: A phase III multicenter prospective randomized trial of low dose radiotherapy for follicular and marginal zone lymphoma. Presented at the Annual Meeting of the American Society for Radiation Oncology, October 28-31, 2012; Boston, MA.
44. Denham JW, Denham E, Dear Kb et al. The follicular non-Hodgkin's lymphoma: the possibility of cure. *Eur J Cancer* 1996;32A(3):470-9. [http://dx.doi.org/10.1016/0959-8049\(95\)00607-9](http://dx.doi.org/10.1016/0959-8049(95)00607-9)
45. Seymour JF, Pro B, Fuller LM, et al. Long-term follow-up of a prospective study of combined modality therapy for stage I-II indolent non-Hodgkin's lymphoma. *J Clin Oncol* 2003 Jun 1;21(11):2115-22. <http://dx.doi.org/10.1200/JCO.2003.07.111> PMID:12775737
46. Guadagnolo BA, Li S, Neuberg D et al. Long-term outcome and mortality trends in early-stage, Grade 1-2 follicular lymphoma treated with radiation therapy. *Int J Radiat Oncol Biol Phys* 2015;64:928-34. <http://dx.doi.org/10.1016/j.ijrobp.2005.08.010> PMID:16243446
47. Maloney DG, Grillo-Lopez AJ, Bodkin DJ, et al. IDEC-C2B8: results of a phase I multiple-dose trial in patients with relapsed non-Hodgkin's lymphoma. *J Clin Oncol* 1997;15(10): 3266-74. PMID:9336364
48. McLaughlin P, Grillo-Lopez AJ, Link BK, et al. Rituximab chimeric anti-CD20 monoclonal antibody therapy for relapsed indolent lymphoma: half of patients respond to a four-dose treatment program. *J Clin Oncol* 1998;16(8):2825-33. PMID:9704735
49. Ardeschna KM, Qian W, Smith P, et al. Rituximab versus a watch-and-wait approach in patients with advanced-stage, asymptomatic, non-bulky follicular lymphoma: an open-label randomised phase 3 trial. *Lancet Oncol* 2014;15(4):424-35. [http://dx.doi.org/10.1016/S1470-2045\(14\)70027-0](http://dx.doi.org/10.1016/S1470-2045(14)70027-0)
50. Freedman A. Follicular lymphoma: 2014 update on diagnosis and management. *Am J Hematol* 2014;89(4):429-36. <http://dx.doi.org/10.1002/ajh.23674> PMID:24687887
51. Rambaldi A, Lazzari M, Manzoni C, Carlotti E, Arcaini L, Baccarani M, et al. Monitoring of minimal residual disease after CHOP and rituximab in previously untreated patients with follicular lymphoma. *Blood* 2002;99(3):856-62. <http://dx.doi.org/10.1182/blood.V99.3.856> PMID:11806987
52. Skvortsova I, Skvortsov S, Popper BA et al. Rituximab enhances radiation-triggered apoptosis in non-Hodgkin's lymphoma cells via caspase-dependent and - independent mechanisms. *J Radiat Res* 2006;47(2): 183-196. <http://dx.doi.org/10.1269/jrr.47.183> PMID:16819145
53. Skvortsova I, Popper BA, Skvortsov S et al. Pretreatment with rituximab enhances radiosensitivity of non-Hodgkin's lymphoma cells. *J Radiat Res* 2005;46(2):241-48. <http://dx.doi.org/10.1269/jrr.46.241> PMID:15988143
54. Pulsoni A, Starza ID, Frattarelli N et al. Stage I/II follicular lymphoma: spread of bcl-2/IgH+ cells in blood and bone marrow from primary site of disease and possibility of clearance after involved field radiotherapy. *Br J Haematol*. 2007 May;137(3):216-20. <http://dx.doi.org/10.1111/j.1365-2141.2007.06545.x> PMID:17408460
55. Pulsoni A, Della Starza I, D' Urso P et al. Treatment of early stage follicular lymphoma with involved field radiotherapy and rituximab. Role of BCL-2 molecular monitoring. *American Society of Hematology Annual Meeting 2013, Abstract 1813*.
56. Herfarth K, Engelhard M, Borchmann P, et al. Treatment of Early Stage Nodal Follicular Lymphoma Using Involved-Field Radiotherapy and Rituximab: Preliminary Results of the Mir Trial (phase II study of the German Low Grade Lymphoma Study Group (GLSG)). *Blood* 2012;120(21).