

Molecular Biology Reports

Degenerative Myelopathy in German Shepherd Dog: comparison of two molecular assays for the identification of the SOD1:c.118G>A mutation

--Manuscript Draft--

Manuscript Number:	MOLE-7752
Full Title:	Degenerative Myelopathy in German Shepherd Dog: comparison of two molecular assays for the identification of the SOD1:c.118G>A mutation
Article Type:	Manuscript
Keywords:	German Shepherd Dog; SOD1; Primer-Extension Reaction; Real Time PCR; Allelic discrimination.
Corresponding Author:	Alessandra Dalmasso ITALY
Corresponding Author Secondary Information:	
Corresponding Author's Institution:	
Corresponding Author's Secondary Institution:	
First Author:	Maria Teresa Capucchio
First Author Secondary Information:	
Order of Authors:	Maria Teresa Capucchio Veronica Spalenza Elena Biasibetti Maria Teresa Bottero Roberto Rasero Alessandra Dalmasso paola sacchi, PhD
Order of Authors Secondary Information:	
Suggested Reviewers:	<p>Martin Pumarola Department of Animal Medicine and Surgery, Veterinary Clinical Science, Autonomous University of Barcelona, Barcelona, 08193 Bellaterra (Barcelona), Spain. marti.pumarola@uab.es</p> <p>Fabio Pablo de Souza Departamento de Zootecnia, Faculdade de Ciências Agrárias e Veterinárias, Universidade Estadual Paulista, Via de Acesso Prof. Paulo Donato Castellane, Jaboticabal, SP 14884-900, Brazil fabiopablos@hotmail.com</p> <p>Brian Summers Royal Veterinary College bsummers@rvc.ac.uk</p> <p>Davide Schiffer Universita di Torino davide.schiffer@unito.it</p> <p>Bartolomeo Biolatti Universita di Torino bartolomeo.biolatti@unito.it</p> <p>Carlo Cantile</p>

1 **Degenerative Myelopathy in German Shepherd Dog: comparison of two molecular assays for**
2 **the identification of the *SOD1:c.118G>A* mutation**

3
4
5
6
7 **Maria Teresa Capucchio¹, Veronica Spalenza¹, Elena Biasibetti, Maria Teresa Bottero,**
8
9 **Roberto Rasero, Alessandra Dalmaso, Paola Sacchi**

10
11
12
13
14 7 Genotyping for Degenerative Myelopathy in German Shepherd Dog

15
16
17
18
19 9 Department of Veterinary Sciences, University of Turin, Italy

20
21
22
23
24 11 **Corresponding author: Alessandra Dalmaso, via Leonardo da Vinci, 44 - 10095 Grugliasco,**
25
26
27 12 **Italy, alessandra.dalmaso@unito.it.**

28
29
30
31
32
33
34
35
36
37
38
39
40
41
42
43
44 19 ¹These Authors contributed equally to this work

1 **Abstract**

1
2 2 Degenerative myelopathy is a late-onset, slowly progressive degeneration of spinal cord white
3
4 3 matter which is reported primarily in large breed dogs. The missense mutation *SOD1:c.118G>A* is
5
6
7 4 associated with this pathology in several dog breeds, including the German Shepherd Dog. The
8
9
10 5 aims of the present study were to develop a tool for the rapid screening of the *SOD1* mutation site in
11
12 6 dogs and to evaluate the association of the polymorphism with degenerative myelopathy in the
13
14 7 German Shepherd breed. Two different techniques were compared: a minisequencing test and a
15
16
17 8 Real-Time PCR Allelic Discrimination assay. Both approaches resulted effective and efficient. A
18
19 9 sample of 47 dogs were examined. Ten subjects presented the symptoms of the illness; for one of
20
21
22 10 them the diagnosis was confirmed by postmortem investigations and it resulted to be an A/A
23
24 11 homozygote. In another clinically suspected dog, heterozygote A/G, the histopathological
25
26
27 12 examination of the medulla showed moderate axon and myelin degenerative changes. German
28
29 13 Shepherd Dog shows a frequency of the mutant allele equal to 0.17, quite high being a high-risk
30
31
32 14 allele. Because canine degenerative myelopathy has a late onset in adulthood and homozygous
33
34 15 mutant dogs are likely as fertile as other genotypes, the natural selection is mild and the mutant
35
36 16 allele may reach high frequencies. A diagnostic test, easy to implement, may contribute to control
37
38
39 17 the gene diffusion in populations. The *SOD1:c.118G>A* mutation could be a useful marker for
40
41 18 breeding strategies intending to reduce the incidence of degenerative myelopathy.
42
43

44 19
45
46 20
47
48
49 21 **Keywords:** German Shepherd Dog, SOD1, Primer-Extension Reaction, Real Time PCR, Allelic
50
51 22 discrimination.
52
53
54
55
56
57
58
59

1 Introduction

1
2 2 Degenerative myelopathy (DM) is a late-onset, slowly progressive degeneration of the spinal cord
3
4 3 white matter which is reported primarily in large-breed dogs. The condition has been described in
5
6 4 German Shepherd Dog (GSD) as well as in other breeds like Siberian Husky, Miniature Poodle,
7
8 5 Boxer, Pembroke Welsh Corgi, Chesapeake Bay Retriever, and Rhodesian Ridgeback [1]. Dogs
9
10 6 with DM show an insidiously progressive ataxia and paresis of the pelvic limbs, ultimately leading
11
12 7 to loss of the ability to ambulate within 6 to 12 months of the onset of signs. Definitive diagnosis of
13
14 8 DM is confirmed by postmortem histological examination of the spinal cord [2]. There is no sex
15
16 9 bias. Most dogs are at least 8 years old before the onset of clinical signs [1]. DM appears to be an
17
18 10 autosomal, recessive, and incompletely penetrant disease [3].
19
20 11

21
22 12 Human amyotrophic lateral sclerosis (ALS) is a fatal neurodegenerative disease characterized by
23
24 13 adult-onset, progressive loss of motor neurons in the motor cortex, brainstem and spinal cord (lower
25
26 14 motor neurons), leading to muscle atrophy, generalized paralysis, respiratory depression, and
27
28 15 inevitable death [4, 5, 6, 7]. In 1993, mutations in superoxide dismutase 1 (*SOD1*) gene were
29
30 16 associated with familial ALS [8]. So far, more than a hundred *SOD1* different mutations have been
31
32 17 identified in ALS patients. Mutations in other genes have been reported to account for a small
33
34 18 number of cases of familial ALS [9].
35
36 19

37 20 Interestingly, relationship between the missense mutation *SOD1:c.118G>A* and canine DM has
38
39 21 recently been reported [3]. This mutation was associated with DM in several dog breeds, including
40
41 22 the GSD. The related SNP could be a useful marker for breeding strategies intending to reduce the
42
43 23 incidence of DM.
44
45 24

46
47 25 The first aim of the present study was to develop a tool for rapid screening of the *SOD1* mutation
48
49 26 site in dogs comparing two different molecular approaches: i) minisequencing (or Primer-Extension
50
51 27 Reaction - PER) and ii) Real-Time PCR Allelic Discrimination TaqMan MinorGroove Binding
52
53 28

1 (MGB). The second aim was to evaluate the association of *SOD1c.118G>A* mutation with DM in
2 GSD.
3
4
5

7 **Materials and methods**

9 *Sample collection*

11
12 Peripheral blood samples were collected from 47 GSD of both genders aged from 5 months to 14
13
14 years, including 10 clinically suspected of having a progressive neurological disease. Dogs were
15
16 patients from the Veterinary Hospital, University of Turin, and from several private veterinary
17
18 practitioners. Blood samples were stored at -22°C until analysed.
19
20

21 *DNA extraction*

22
23
24 Genomic DNA was obtained from blood using the NucleoSpin Blood Quick Pure kit (Macherey-
25
26 Nagel GmbH & Co. KG, Düren, Germany) , according to the manufacturer protocol, and stored at -
27
28 20°C until use. DNA purity was evaluated by absorbance readings using the NanoDrop-2000
29
30
31 (Thermo Fisher Scientific Inc., Waltham, Massachusetts).
32

33 *Minisequencing test*

34
35
36 The PER reaction is based on the addition of a [F]ddNTP to the 3' end of an unlabeled
37
38 oligonucleotide (sequencing primer) in the absence of dNTPs in the reaction. Each [F]ddNTP is
39
40 labeled with a specific fluorescent dye and each sequencing primer is designed immediately
41
42 adjacent to the diagnosis site.
43
44

45 Preliminary PCR

46
47
48 The PCR primers used in the preliminary PCR tests are shown in Fig.1 (Eurofins MWG Operon,
49
50 Ebersberg, Germany) [3], PCR reactions were performed in 50 µL volumes consisting of 0.04 U/µL
51
52 HotStarTaq (Qiagen, Hilden, Germany), 0.2 mM each of dNTPs, 0.5 µM of each primer, and 50-100
53
54 ng of DNA template. The PCR profile consisted of an initial activation step at 95°C for 15 min,
55
56 followed by 35 cycles of 95°C denaturation for 30 sec, annealing at 60°C for 30 sec, and extension
57
58
59

1 at 72°C for 30 sec. A final extension step of 72°C for 7 min was added to all reactions.

2 Amplifications were carried out using a GeneAmp PCR System 2720 thermal cycler (Applied
3 Biosystems by Life Technologies Italia, Monza, Italy). Amplicons were resolved on a 2.5% agarose
4 gel.
5

6 Primer-Extension Reaction (PER)

7 The PCR products acted as templates for PER after enzymatic clean up. In order to remove primers
8 and unincorporated dNTPs, 2 µL of Exo-Sap (GE Healthcar Europe Gmbh, Glattbrugg, Schweiz)
9 were added to 5 µL of PCR products. Tubes were incubated at 37°C for 1 h and at 80°C for 15 min.

10 Based on *SOD1* sequence alignments, the sequencing primer was designed upstream from the
11 *SOD1* mutation site associated with DM (5'- GAACCATTACAGGGCTGACT -3') (Fig. 1) PER
12 reactions were performed following the SNaPshot multiplex Kit protocol (Applied Biosystems by
13 Life Technologies Italia, Monza, Italy) with minor modifications: 2.5 µL of Ready Reaction Mix,
14 3µL of purified amplicons from the preliminary PCR, diluted to obtain a range of 0.4-0.01 pmol and
15 0,2µM of sequencing primer in a total volume of 10µL. The reactions underwent 25 single base
16 extension cycles of denaturation at 96°C for 10 s, annealing at 50°C for 5 s, and extension at 60°C
17 during 30 s. The reactions were carried out in a GeneAmp PCR System 2720 thermal cycler
18 (Applied Biosystems by Life Technologies Italia, Monza, Italy).

1 Subsequently, a post-extension treatment to remove 5'-phosphoryl group of the [F]ddNTPs helped
2 to prevent unincorporated [F]ddNTPs co-migrating with the extended primers and producing a high
3 background signal. For this purpose, the final volume (10 µL) was treated with 1 unit of Calf
4 Intestine Alkaline Phosphatase (Invitrogen by Life Technologies Italia, Monza, Italy). The tubes
5 were incubated at 37°C for 1 hr and at 65°C for 15 min. Finally, samples were prepared by adding 1
6 µL of the post-PER product to 12 µL of formamide and 0.2 µL of GeneScan 120 LIZ size standard.
7 Each sample was loaded on the ABI 310 Genetic Analyzer and analyzed using Pop4 polymer, a 47-
8 cm capillary column, the ABI GeneScan E5 Run Module. Parameters for this analysis are the
9 following: injection time 12 s and run time 15 min. Electropherograms were analysed using the
10 GeneScan 3.1.2 software (Applied Biosystems by Life Technologies Italia, Monza, Italy)

11 *Real-Time PCR Allelic Discrimination test*

12 In our study, we develop a Real-Time PCR Allelic Discrimination TaqMan MGB assay based on
13 the *SOD1:c.118G>A* mutation analysis.

14 Recently, the Real-Time PCR Allelic Discrimination test has been largely used to genotype
15 individual DNA at known mutation site [10].

16 During amplification, the fluorogenic TaqMan probes anneal specifically to complementary
17 sequences between forward and reverse primer binding sites on the DNA template and they are then
18 degraded owing to the 5'-3' exonuclease activity of DNA polymerase. Once separated from the
19 quencher, the reporter dye emits fluorescence, which is read by the Real-Time PCR system.

1 In the assay here described, the two probes are 100% identical with their respective target
1
2 2 sequences; only a single mismatch in the 5' end is observed between them. The contemporary
3
4 3 presence of the two probes allows the annealing of both regardless of the allele present because the
5
6
7 4 single mismatch does not impair the probes' annealing to heterologous DNA. During the extension,
8
9
10 5 the 5'-3' Exonuclease activity of the DNA polymerase degrades the probe that is totally identical to
11
12 6 the template with a consequent fluorescent emission. On the contrary, the probe that has a mismatch
13
14 7 with the sequence is removed without degradation and devoid of fluorescent emission. The post-
15
16
17 8 PCR analysis allows the instantaneous visualization of the results by mean of a specific plot.

19 9 Primer and probe design

20
21
22 10 The PCR primers [3] were used in conjunction with two MGB probes (Applied Biosystems by Life
23
24 11 Technologies Italia, Monza, Italy). One probe was designed to specifically hybridize, with a 100%
25
26
27 12 of identity, to one allele (*SOD1_ProbeA* 5'- 6FAM-CTGACTAAAGGCGAG -3') and the other one
28
29 13 to the second allele (*SOD1_ProbeG* 5'- VIC-CTGACTGAAGGCGAGC -3') (Fig. 2).
30

31 14 Analysis of diagnostic site

32
33
34 15 Real-time PCR was performed in a 25 µL reaction mixture containing 900 nM of both forward and
35
36 16 reverse primers, 200 nM of each probe, 12.5 µL of TaqMan Universal Master Mix (Applied
37
38
39 17 Biosystems by Life Technologies Italia, Monza, Italy), and 30-50 ng of DNA template. Thermal
40
41 18 cyclings were performed on a 7300 Real-Time PCR system (Applied Biosystems by Life
42
43
44 19 Technologies Italia, Monza, Italy) under the following conditions: 95°C for 10 min, and 45 cycles
45
46 20 of 95°C for 15 s and 60°C for 1 min. All PCR reactions were run in duplicate.
47

48
49 21 Results were obtained by the automatic calling feature of the Allelic Discrimination option in SDS
50
51 22 v1.2.1 software. Alleles were assigned to samples by visual inspection of a plot of the fluorescence
52
53 23 (Rn) from the A probe versus Rn from G probe generated from the post-PCR fluorescence read.
54
55
56 24
57
58 25
59
60

1 *Sequencing*

1
2 2 DNA sequencing was carried out as a confirmatory test. Amplified fragments of the preliminary
3
4 3 PCR of a homozygous AA dog and a homozygous GG animal were cloned into the pDRIVE
5
6
7 4 Cloning Vector using QIAGEN PCR Cloning Kit (GE Healthcar Europe GmbH, Glattbrugg,
8
9
10 5 Schweiz). Clones were subsequently submitted to RFLP analysis using Hae III to choose a clone
11
12 6 that contained the diagnostic site. These cloned fragments were cycle sequenced on an ABI PRISM
13
14 7 310 Genetic Analyser (Applied Biosystems by Life Technologies Italia, Monza, Italy) , using the
15
16
17 8 ABI Prism BigDye terminator Cycle Sequencing Ready Reaction Kit (Applied Biosystems by Life
18
19 9 Technologies Italia, Monza, Italy), version 1.1 by the dideoxy chain termination method with
20
21
22 10 fluorescence dye terminators. The sequencing on both strands was performed using the two M13
23
24 11 vector primers. The resulting sequences were compared and aligned with ‘ClustalW’ program[11].
25
26
27 12

28 29 13 **Results**

30 31 14 *Minisequencing test*

32
33
34 15 The primers used for the preliminary PCR successfully amplified a 79 bp fragment. For
35
36 16 homozygote dogs the PER analysis gave rise to a peak of the color that is specific to the nucleotide
37
38
39 17 present on template, green for A and blue for G. In heterozygote animals both peaks, green and
40
41 18 blue, were generated (Fig. 3). On 47 GSDs analysed by minisequencing, two homozygote
42
43
44 19 individuals for the mutant allele (AA) were detected, 12 heterozygous GA, all other dogs were
45
46 20 homozygote for the wild allele (GG).
47
48
49
50
51
52
53
54
55
56
57
58
59
60
61
62
63
64
65

1 *Real-Time PCR Allelic Discrimination test*

2 Real-Time PCR Allelic Discrimination test confirmed the genotypes obtained with PER. A
3
4
5 representative plot used to genotype individuals is displayed in Fig 4. The Real Time test was
6
7 applied to all 47 individuals. Two dogs were confirmed to be A/A, 33 dogs were G/G and 12 G/A.
8
9
10 In the examined cohort the allele frequencies were 0.17 and 0.83 for A and G, respectively.

11 *Sequencing*

12
13
14
15
16
17
18
19
20
21
22
23
24
25
26
27
28
29
30
31
32
33
34
35
36
37
38
39
40
41
42
43
44
45
46
47
48
49
50
51
52
53
54
55
56
57
58
59
60
61
62
63
64
65

7 Ultimately, the sequencing of the amplicons obtained from the preliminary PCR confirmed the
8 reliability of both techniques for genotyping the *SOD1:c118G>A* polymorphism in dog.

9 *Association between DM and SOD1c.118G>A*

10
11
12
13
14
15
16
17
18
19
20
21
22
23
24
25
26
27
28
29
30
31
32
33
34
35
36
37
38
39
40
41
42
43
44
45
46
47
48
49
50
51
52
53
54
55
56
57
58
59
60
61
62
63
64
65

10 Out of the 47 dogs examined in this study, 10 were clinically suspected to have DM. Therefore,
11
12
13
14
15
16
17
18
19
20
21
22
23
24
25
26
27
28
29
30
31
32
33
34
35
36
37
38
39
40
41
42
43
44
45
46
47
48
49
50
51
52
53
54
55
56
57
58
59
60
61
62
63
64
65

11 depending on availability of tissues and clinical information, diagnoses of DM were made on the
12
13
14
15
16
17
18
19
20
21
22
23
24
25
26
27
28
29
30
31
32
33
34
35
36
37
38
39
40
41
42
43
44
45
46
47
48
49
50
51
52
53
54
55
56
57
58
59
60
61
62
63
64
65

12 basis of criteria of varying stringency. Only in one case the clinical diagnosis was confirmed by
13
14
15
16
17
18
19
20
21
22
23
24
25
26
27
28
29
30
31
32
33
34
35
36
37
38
39
40
41
42
43
44
45
46
47
48
49
50
51
52
53
54
55
56
57
58
59
60
61
62
63
64
65

13 postmortem investigations (histopathology of the spinal cord tissue) (data not shown). It was a
14
15
16
17
18
19
20
21
22
23
24
25
26
27
28
29
30
31
32
33
34
35
36
37
38
39
40
41
42
43
44
45
46
47
48
49
50
51
52
53
54
55
56
57
58
59
60
61
62
63
64
65

14 male, 8 years old, and it resulted to be an A/A homozygote. In another clinically suspected dog, a
15
16
17
18
19
20
21
22
23
24
25
26
27
28
29
30
31
32
33
34
35
36
37
38
39
40
41
42
43
44
45
46
47
48
49
50
51
52
53
54
55
56
57
58
59
60
61
62
63
64
65

15 male 14 years old, heterozygote A/G, the histopathological examination of the medulla showed only
16
17
18
19
20
21
22
23
24
25
26
27
28
29
30
31
32
33
34
35
36
37
38
39
40
41
42
43
44
45
46
47
48
49
50
51
52
53
54
55
56
57
58
59
60
61
62
63
64
65

16 moderate axon and myelin degenerative changes limited to the thoracic segments. One more A/A
17
18
19
20
21
22
23
24
25
26
27
28
29
30
31
32
33
34
35
36
37
38
39
40
41
42
43
44
45
46
47
48
49
50
51
52
53
54
55
56
57
58
59
60
61
62
63
64
65

17 clinically suspected animal is still alive. For all the other clinically suspected dogs (1 A/G and 6
18
19
20
21
22
23
24
25
26
27
28
29
30
31
32
33
34
35
36
37
38
39
40
41
42
43
44
45
46
47
48
49
50
51
52
53
54
55
56
57
58
59
60
61
62
63
64
65

18 G/G) the diagnosis was not confirmed by histopathological examination of the medulla or
19
20
21
22
23
24
25
26
27
28
29
30
31
32
33
34
35
36
37
38
39
40
41
42
43
44
45
46
47
48
49
50
51
52
53
54
55
56
57
58
59
60
61
62
63
64
65

19 unfortunately the necropsy was not carried out.

20
21
22
23
24
25
26
27
28
29
30
31
32
33
34
35
36
37
38
39
40
41
42
43
44
45
46
47
48
49
50
51
52
53
54
55
56
57
58
59
60
61
62
63
64
65

20 From the other 37 dogs not suspected to have DM, none was homozygote A/A, 27 were
21
22
23
24
25
26
27
28
29
30
31
32
33
34
35
36
37
38
39
40
41
42
43
44
45
46
47
48
49
50
51
52
53
54
55
56
57
58
59
60
61
62
63
64
65

21 homozygotes G/G, and the other heterozygotes.

22 **Discussion**

23
24
25
26
27
28
29
30
31
32
33
34
35
36
37
38
39
40
41
42
43
44
45
46
47
48
49
50
51
52
53
54
55
56
57
58
59
60
61
62
63
64
65

23 In a previous study *SOD1* in normal and DM affected dogs was sequenced and a G to A transition
24
25
26
27
28
29
30
31
32
33
34
35
36
37
38
39
40
41
42
43
44
45
46
47
48
49
50
51
52
53
54
55
56
57
58
59
60
61
62
63
64
65

24 in exon 2, predicting an E40K missense mutation, was observed [3]. Homozygosity for the A allele

1 was highly associated with DM in five dog breeds (GSD, Pembroke Welsh Corgi, Boxer,
2 Rhodesian ridgeback, and Chesapeake Bay retriever); therefore the A allele was recognized as a
3 major genetic risk factor for the disease. Recently, two genotyping assays for the *SOD1* mutation,
4 using conventional and Real Time PCR methods have been proposed [12]. The aim of our study
5 was to develop a test for rapid screening and identification of *SOD1:c118G>A* mutation carriers in
6 dogs using two different approaches: a minisequencing test and a Real-Time PCR Allelic
7 Discrimination test. Both approaches are effective and efficient, all genotypes were clearly
8 determined without non-specific allelic amplification. Costs for consumables and reliability of
9 results are similar. Real Time Allelic Discrimination test provides several advantages because it
10 does not require any post-amplification step and utilizes 96-well format plates that can be read in
11 about 5 min, enabling a rapid diagnosis of large numbers of samples. On the other hand, the reads
12 of the minisequencing test have a precision comparable to that of the sequencing. This technique
13 can be suitable for automation and high-throughput testing for laboratories equipped with an ABI
14 sequencer. In comparison with sequencing, the minisequencing has the advantage of being quicker,
15 allowing an immediate interpretation of the results. Moreover, it may be implemented for the
16 multiplex analysis of several mutation sites. Recently, a novel *SOD1* missense mutation, associated
17 with DM, has been described in the Bernese Mountain Dog breed [13]. It would be interesting to
18 implement a minisequencing test for the concurrent genotyping of multiple SNPs. Ultimately, the
19 choice of the more suitable approach depends on laboratory disposable equipment.
20 Representatives of 217 different dog breeds were genotyped at *SOD1:c.118G>A* and 115 of them
21 were found to segregate the A allele [14]. The Wire Fox Terrier had the highest *SOD1:c.118A* allele
22 frequency (0.98). Likewise, in a survey on Pembroke Welsh Corgi, the mutant allele was found to
23 be prevalent (0.68) [12]. In the present investigation, GSD shows a frequency of the mutant allele
24 equal to 0.17, quite high being a high-risk allele. Because canine DM has a late onset in adulthood
25 and homozygous mutant dogs are likely as fertile as other genotypes, the natural selection is mild

1 and the mutant allele may reach high frequencies. A diagnostic test, easy to implement, may
2 contribute to control the gene diffusion in populations.

3
4
5 3 According to the hypothesis of Awano [3], the DM seems to be an age-related, incompletely
6
7 4 penetrant disease. As far as the gene action is concerned, a model of inheritance based on dominant
8
9
10 5 allele, as in humans, may not be excluded. In fact, not only the homozygote dogs exhibit clinical
11
12 6 signs, but also heterozygote animals develop the pathology, although very slowly. Therefore, the
13
14
15 7 clinical signs become apparent solely in dogs surviving longer the usual canine life span.

16 17 8 18 19 9 **Acknowledgements**

20
21
22 10 The authors thank Alessandra Sereno for technical support.

23 24 11 25 26 27 12 **Declaration of conflicting interests**

28
29 13 The authors declared no potential conflicts of interest with respect to the research, authorship,
30
31
32 14 and/or publication of this article.

1 References

- 2 1. Coates JR, Winger FA (2010) Canine degenerative myelopathy. Vet Clin North Am Small
3 Anim Pract 40:929-50.
- 4 2. March PA, Coates JR, Abyad R, et al.(2009) Degenerative myelopathy in 18 Pembroke Welsh
5 Corgi dogs. Vet Pathol 46:241-250.
- 6 3. Awano T, Johnson GS, Wade C, et al.(2009) Genome-wide association analysis reveals a
7 *SOD1* missense mutation canine degenerative myelopathy that resembles amyotrophic lateral
8 sclerosis. Proc Natl Acad Sci 106:2794-2799.
- 9 4. Jonsson PA, Ernhill K, Andersen PM, et al.(2004) Minute quantities of misfolded mutant
10 superoxide dismutase-1 cause amyotrophic lateral sclerosis. Brain 127:73-88.
- 11 5. Shaw BF, Durazo A, Nersissian AM, et al. (2006) Local unfolding in a destabilized,
12 pathogenic variant of superoxide dismutase 1 observed with H/D exchange and mass
13 spectrometry. J Biol Chem 281:18167-76.
- 14 6. Rakhit R, Chakrabartty A.(2006) Structure, folding, and misfolding of Cu,Zn superoxide
15 dismutase in amyotrophic lateral sclerosis. Biochim Biophys Acta 1762:1025-37.
- 16 7. Marucci G, Morandi L, Bartolomei I, et al.(2007) Amyotrophic lateral sclerosis with mutation
17 of the Cu/Zn superoxide dismutase gene (*SOD1*) in a patient with Down syndrome.
18 Neuromuscul Disord 17:673–676.
- 19 8. Rosen DR, Siddique T, Patterson D. et al.(1993) Mutations in Cu/Zn superoxide dismutase
20 gene are associated with familial amyotrophic lateral sclerosis. Nature 362:59–62.
- 21 9. Pasinelli P, Brown RH.: 2006, Molecular biology of amyotrophic lateral sclerosis: Insights
22 from genetics. Nat Rev Neurosci 7:710–723.
- 23 10. Stopińska K, Grzybowski T, Malyarchuk BA, et al.(2006) Optimization of the Y831C
24 mutation detection in human DNA polymerase gamma by allelic discrimination assay. Acta
25 Biochim Pol 53:591-5.

- 1 11. Thompson JD, Higgins DG, Gibson TJ(1994) Clustal W: improving the sensitivity of
2 progressive multiple sequence alignment through sequence weighting, position-specific gap
3 penalties and weight matrix choice. Nucleic Acids Res. 22:4673-4680.
4
5
6
7 12. Chang HS, Kamishina H, Mizukami K, et al.(2013) Genotyping Assays for the Canine
8 Degenerative Myelopathy-Associated c.118G>A (p.E40K) Mutation of the *SOD1* Gene Using
9 Conventional and Real-Time PCR Methods: A High Prevalence in the Pembroke Welsh Corgi
10 Breed in Japan. J Vet Med Sci 2013 Jan 18. (Epub ahead of print)
11
12
13
14
15
16
17 13. Wininger FA, Zeng R, Johnson GS et al.(2011) Degenerative myelopathy in a Bernese
18 Mountain Dog with a novel *SOD1* missense mutation. J Vet Intern Med 25: 1166-1170
19
20
21
22 14. Zeng R, Coates JR, Hansen L, et al.(2012) The distributions of two *SOD1* missense mutations
23 in the pet dog population and their association with canine degenerative myelopathy, a model
24 for amyotrophic lateral sclerosis. American Society of Human Genetics (ASHG)'s 62nd
25 Annual Meeting, 6-10, November 2012 San Francisco, CA.
26
27
28
29
30
31
32
33
34
35
36
37
38
39
40
41
42
43
44
45
46
47
48
49
50
51
52
53
54
55
56
57
58
59
60
61
62
63
64
65

1 **Legends for figures**

2 2 Fig. 1 Primers design for minisequencing (preliminary PCR primers in bold and PER primer in
3
4 3 grey). The bases in the box correspond to the *SOD1* mutation site.

5 4 Fig. 2 Primers and probes design for Real-Time PCR Allelic Discrimination (primers in bold and
6
7 5 probes in grey). The bases in the box correspond to the *SOD1* mutation site.

8 6 Fig. 3 Minisequencing patterns for the three genotypes: G/G (a), A/A (b), and G/A (c).

9 7 Fig. 4 Real-Time PCR Allelic Discrimination plot. Fluorescence of G (x-axis) and A (y-axis)
10
11 8 probes: no-template controls (squares), G/G (circles), A/A (diamonds), and G/A (triangles).

Figure 1
[Click here to download high resolution image](#)

```
.....|.....| .....|.....| .....|.....| .....|.....| .....|.....| .....|.....| .....|.....|
          10          20          30          40          50          60          70
ref|NC_006613 TGAAGGGAAG TGGGCCTGTT GTGGTATCAG GAACCATTAC AGGGCTGACT GAAGGCGAGC ATGGATTCCA
ref|NC_006613 TGAAGGGAAG TGGGCCTGTT GTGGTATCAG GAACCATTAC AGGGCTGACT GAAGGCGAGC ATGGATTCCA
*****      *****      *****      *****      *****      *****      *****

```



```
.....|.....| .....|.....| .....|.....| ..
          80          90          100
ref|NC_006 CGTCCATCAG TTTGGAGATA ATACACAAGG TG
ref|NC_006 CGTCCATCAG TTTGGAGATA ATACACAAGG TG
*****      *****      *****      **

```

Figure 2

[Click here to download high resolution image](#)

```
.....|.....| .....|.....| .....|.....| .....|.....| .....|.....| .....|.....| .....|.....|
          10          20          30          40          50          60          70
ref|NC_006613 TGAAGGGAAG TGGGCCTGTT GTGGTATCAG GAACCATTAC AGGGCTGACT GAAGGCGAGC ATGGATTCCA
ref|NC_006613 TGAAGGGAAG TGGGCCTGTT GTGGTATCAG GAACCATTAC AGGGCTGACT AAAGGCGAGC ATGGATTCCA
*****      *****      *****      *****      *****      *****      *****

```



```
.....|.....| .....|.....| .....|.....| ..
          80          90          100
ref|NC_00613  CGTCCATCAG TTTGGAGATA ATACACAAGG TG
ref|NC_00613  CGTCCATCAG TTTGGAGATA ATACACAAGG TG
*****      *****      *****      **

```

Figure 3

[Click here to download high resolution image](#)

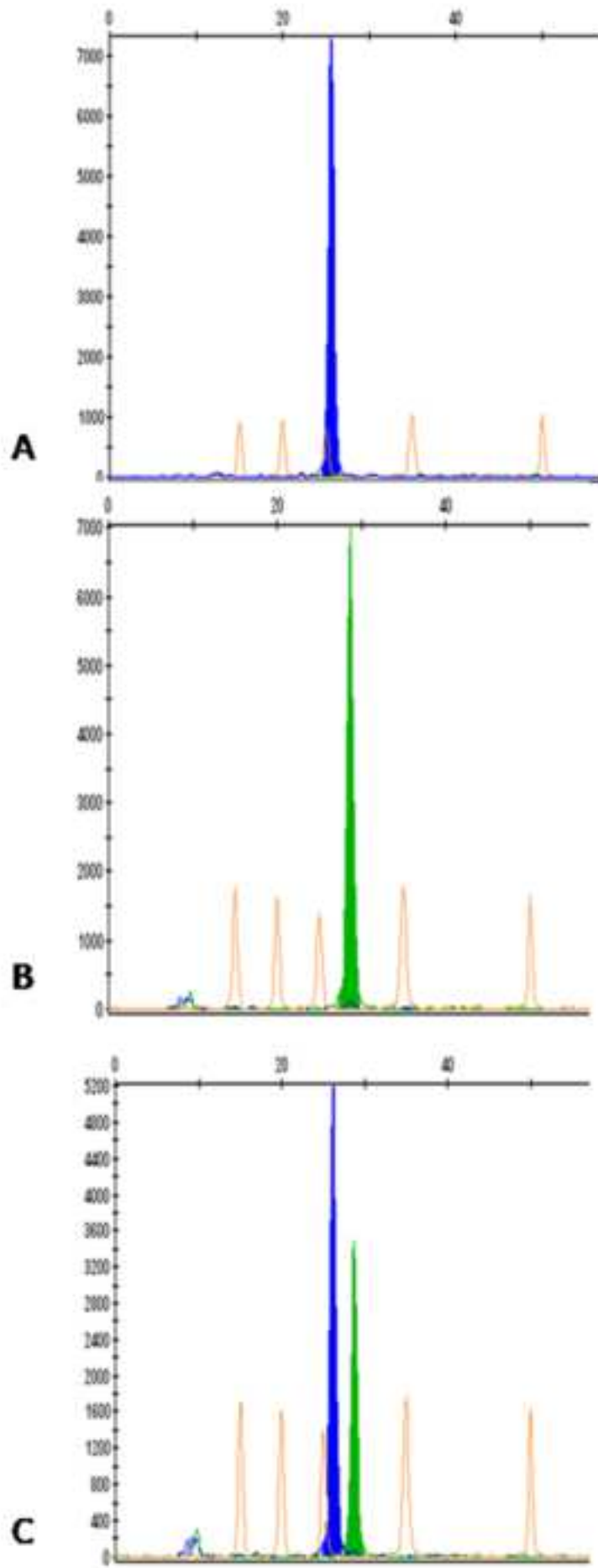


Figure 4
[Click here to download high resolution image](#)

