



Centrum Wiskunde & Informatica

**REPORT**RAPPORT

**MAS**

Modelling, Analysis and Simulation



*Modelling, Analysis and Simulation*

A physical five-equation model for compressible two-fluid flow, and its numerical treatment

J.J. Kreeft, B. Koren

**REPORT MAS-E0905 JUNE 2009**

Centrum Wiskunde & Informatica (CWI) is the national research institute for Mathematics and Computer Science. It is sponsored by the Netherlands Organisation for Scientific Research (NWO). CWI is a founding member of ERCIM, the European Research Consortium for Informatics and Mathematics.

CWI's research has a theme-oriented structure and is grouped into four clusters. Listed below are the names of the clusters and in parentheses their acronyms.

Probability, Networks and Algorithms (PNA)

Software Engineering (SEN)

**Modelling, Analysis and Simulation (MAS)**

Information Systems (INS)

Copyright © 2009, Centrum Wiskunde & Informatica  
P.O. Box 94079, 1090 GB Amsterdam (NL)  
Science Park 123, 1098 XG Amsterdam (NL)  
Telephone +31 20 592 9333  
Telefax +31 20 592 4199

ISSN 1386-3703

# A physical five-equation model for compressible two-fluid flow, and its numerical treatment

## ABSTRACT

A novel five-equation model for inviscid, non-heat-conducting, compressible two-fluid flow is derived, together with an appropriate numerical method. The model uses flow equations based on conservation laws and exchange laws only. The two fluids exchange momentum and energy, for which source terms are derived from fundamental physical laws. The Riemann invariants of the governing equations are derived, and used in the construction of an Osher-type approximate Riemann solver. A consistent finite-volume discretization of the source terms is proposed. The source terms have distinct contributions in the cell domain and at the cell faces. For the source-term evaluation at the cell faces, the Riemann solver is elegantly exploited. Numerical results are presented for shock-tube and shock-bubble-interaction problems. The resemblance with experimental results is very good. Free-surface pressure oscillations do not occur, without any precaution. The paper contributes to state of the art in computing two-fluid flows.

*2000 Mathematics Subject Classification:* 65M60, 76N15, 76T10

*Keywords and Phrases:* compressible two-fluid flow, source terms, momentum and energy exchange, interface capturing, approximate Riemann solver, shock tube, shock-bubble interaction



# A Physical Five-Equation Model for Compressible Two-Fluid Flow, and its Numerical Treatment

Jasper J. Kreeft

*Delft University of Technology, Faculty of Aerospace Engineering,  
P.O. Box 5058, 2600 GB Delft, The Netherlands*

Barry Koren

*Centrum Wiskunde & Informatica, P.O. Box 94079, 1090 GB Amsterdam, The Netherlands  
Leiden University, Mathematical Institute, P.O. Box 9512, 2300 RA Leiden, The Netherlands*

---

## Abstract

A novel five-equation model for inviscid, non-heat-conducting, compressible two-fluid flow is derived, together with an appropriate numerical method. The model uses flow equations based on conservation laws and exchange laws only. The two fluids exchange momentum and energy, for which source terms are derived from fundamental physical laws. The Riemann invariants of the governing equations are derived, and used in the construction of an Osher-type approximate Riemann solver. A consistent finite-volume discretization of the source terms is proposed. The source terms have distinct contributions in the cell domain and at the cell faces. For the source-term evaluation at the cell faces, the Riemann solver is elegantly exploited. Numerical results are presented for shock-tube and shock-bubble-interaction problems. The resemblance with experimental results is very good. Free-surface pressure oscillations do not occur, without any precaution. The paper contributes to state of the art in computing two-fluid flows.

*Key words:* compressible two-fluid flow, source terms, momentum and energy exchange, interface capturing, approximate Riemann solver, shock tube, shock-bubble interaction

*MSC:* 65M60, 76N15, 76T10

---

---

*Email addresses:* [j.j.kreeft@tudelft.nl](mailto:j.j.kreeft@tudelft.nl) (Jasper J. Kreeft), [barry.koren@cwj.nl](mailto:barry.koren@cwj.nl) (Barry Koren).

*Preprint submitted to J. Comput. Phys.*

*5 June 2009*

## 1. Introduction

The research interest in modeling and computing compressible, two-fluid flows is long-standing, as is reflected from the 25-year old review article by Stewart and Wendroff [30], which already contains a wealth of literature on the topic.

These days, to model two-fluid flows, seven-equation models are the most complete. Baer and Nunziato's [5] is the best known model in this class. For both fluids, it contains equations for the physical quantities mass, momentum and energy, already implying six equations. The seventh equation describes the topology of the flow, e.g., the location and shape of the two-fluid interface. A recent seven-equation model, in which all equations are based on physical balance laws, has been proposed by Romenski et al. [24]. Important modeling and numerical work on seven-equation models has been done by Saurel and Abgrall [25].

Besides completeness, a seven-equation model also implies complexity, both physically and numerically. Since its general physics is not always necessary, simpler and more compact models have been proposed and successfully applied. An elegant hierarchy of reduced models exists, with the numbers of equations ranging from six to three only. Examples of the latter are the homogeneous equilibrium model [6] and the barotropic model described in [32]. For a clear and compact overview over existing reduced two-fluid flow models, we refer to [8].

An important class of reduced models is formed by the five-equation models, in which velocity equilibrium and pressure equilibrium are assumed. Both equilibria are valid across two-fluid interfaces modelled as a contact discontinuity, a practically relevant case. The archetype five-equation model is that of Kapila et al. [13]. It has already found many applications, a non-exhaustive list of excellent references is [17, 4, 19, 3, 27, 22]. (Recently, Saurel et al. have even derived a six-equation model from a five-equation one [28].) Kapila's five-equation model contains four equations for physical quantities: two for mass (e.g., bulk mass and mass of one of the two fluids), one for bulk momentum, and one for bulk energy. Like the Baer-Nunziato model, it is also completed by an equation for a non-physical quantity describing the flow topology, in the Kapila model, a non-homogeneous convection equation for the volume fraction of one of the two fluids.

In the present paper, we derive a five-equation model for physical quantities only; for *(i)* bulk mass, *(ii)* bulk momentum, *(iii)* bulk energy, *(iv)* mass of one of the two fluids, and *(v)* energy of the same fluid. As in the barotropic, three-equation two-fluid flow model presented in [32], also here, no equation is introduced to describe the topology of the two-fluid interface. The fifth equation mentioned above, the energy equation for one of the two fluids, is novel. It contains source terms that describe the exchange of energy between the two fluids. The first four equations are conservation laws. The fifth equation is an exchange law; it is conservation-law-like though. As a consequence, the entire system allows for a rather straightforward derivation and application of finite-volume methods and corresponding numerical tools, such as approximate Riemann solvers. An Osher-type approximate Riemann solver will be derived for our five-equation model. For the numerical treatment of the energy-exchange terms, use will also be made of the just derived approximate Riemann solver. Besides straightforward numerics, another bonus of the physical five-equation model is the correctness of its numerical solutions, particularly in the following sense. Last one and a half decade, much research effort has been devoted

to understanding and avoiding zeroth-order pressure errors (oscillations) at and near two-fluid interfaces [14, 1, 12, 7, 26, 2, 16]. Our impression is that these errors are (often) due to the use of a non-physical equation to describe the topology of the flow, i.e., an equation which is not derived from a physical law. The numerical solutions of the current physical model appear to be pressure-oscillation-free near two-fluid interfaces, without any precaution.

The contents of the paper is the following. In section 2, the physical five-equation model is derived. Most attention is for the derivation and physical interpretation of the energy-exchange terms. In section 3, the numerical method for the five-equation model is presented, with – also here – most attention for the energy-exchange terms. In section 4, numerical results are presented, for three shock-tube problems and two standard shock-bubble-interaction problems. Section 5 concludes the paper.

## 2. Derivation of five-equation model

### 2.1. Assumptions

Only fluids, and not phases, are considered. The two fluids are assumed to be immiscible. They may exchange momentum by exerting forces on each other, and exchange energy due to work. The amount of momentum and energy exchange depends on the relaxation speed of pressure and velocity. An important assumption is instantaneous relaxation of the pressure and the velocity vector, i.e.,

$$p_1 = p_2 \equiv p, \quad (1a)$$

$$\mathbf{V}_1 = \mathbf{V}_2 \equiv \mathbf{V}, \quad (1b)$$

where the subscripts refer to the two fluids. Assumption (1) prescribes that the pressures and velocity vectors on both sides of the two-fluid interface are equal. It is the known step to reduce a seven-equation model to a five-equation model, see e.g. [1, 25, 13, 4, 19, 8]. Finally, viscosity and heat conduction are neglected. Since this implies that the two fluids do not exchange heat, in general, there will be no thermal equilibrium.

### 2.2. Conservation and exchange laws

Consider a control volume  $V$ , which is fixed in space and time. For this volume three physical principles are known: conservation of bulk mass, bulk momentum and bulk energy. In integral form this is written as

$$\frac{\partial}{\partial t} \int_V \rho dV + \oint_S \rho \mathbf{V} \cdot \mathbf{n} dS = 0, \quad (2)$$

$$\frac{\partial}{\partial t} \int_V \rho \mathbf{V} dV + \oint_S \rho \mathbf{V} \otimes \mathbf{V} \cdot \mathbf{n} dS + \oint_S p \mathbf{n} dS = \mathbf{0}, \quad (3)$$

$$\frac{\partial}{\partial t} \int_V \rho E dV + \oint_S \rho E \mathbf{V} \cdot \mathbf{n} dS + \oint_S p \mathbf{V} \cdot \mathbf{n} dS = 0. \quad (4)$$

Now take a closer look at the content of the control volume. There can be two fluids in it. The pressure and velocity are equal over the two-fluid interface, but the density and

total energy do not need to be so; in general  $\rho_1 \neq \rho_2$  and  $E_1 \neq E_2$ . The quantities  $\rho$  and  $E$  in equations (2) and (3) are the bulk density and bulk total energy.

For each fluid separately we can also write an equation for mass, momentum and energy. The mass of each fluid is conserved. The conservation of, e.g., mass of fluid 1 can be written as

$$\frac{\partial}{\partial t} \int_{V_1(t)} \rho_1 dV_1 + \oint_{S_1(t)} \rho_1 (\mathbf{V} - \mathbf{V}_{S_1}) \cdot \mathbf{n} dS_1 = 0, \quad (5)$$

where the volume  $V_1(t)$  and the surface  $S_1(t)$  are unknown and may vary in time due to a possible motion of the interface with velocity  $\mathbf{V}_{S_1}$ . The momentum equation of fluid 1 is not conservative; fluid 2 can exert a force on fluid 1 and vice versa. We denote the net force per unit of volume exerted on fluid 1 by  $\mathbf{F}$ . Since  $\mathbf{F}$  is a result of both fluids, it is integrated over the total volume  $V$ . Hence, the momentum equation of fluid 1 can be written as

$$\frac{\partial}{\partial t} \int_{V_1(t)} \rho_1 \mathbf{V} dV_1 + \oint_{S_1(t)} \rho_1 \mathbf{V} \otimes (\mathbf{V} - \mathbf{V}_{S_1}) \cdot \mathbf{n} dS_1 + \oint_{S_1(t)} p \mathbf{n} dS_1 = \int_V \mathbf{F} dV. \quad (6)$$

An expression for  $\mathbf{F}$  in terms of the existing unknowns will be derived in section 2.3. There it will also be shown that the resulting momentum equation of fluid 1 is a dependent equation; it can be directly derived from bulk mass equation (2), bulk momentum equation (3) and mass equation (5). The cause of this dependence is the assumption that pressure and velocity are equal over two-fluid interfaces. This is in contrast with the energy equation of fluid 1, which will be independent, because we do not assume temperature equilibrium.

The force  $\mathbf{F}$  also contributes to the energy equation of fluid 1 in the form of rate of mechanical work performed per unit of volume:

$$\dot{W}_M = \mathbf{F} \cdot \mathbf{V}. \quad (7)$$

Besides mechanical work, also thermodynamic work may be performed. The rate of thermodynamic work per unit of volume is denoted by  $\dot{W}_T$ . The energy equation of fluid 1 then becomes:

$$\frac{\partial}{\partial t} \int_{V_1(t)} \rho_1 E_1 dV_1 + \oint_{S_1(t)} \rho_1 E_1 (\mathbf{V} - \mathbf{V}_{S_1}) \cdot \mathbf{n} dS_1 + \oint_{S_1(t)} p \mathbf{V} \cdot \mathbf{n} dS_1 = \int_V (\dot{W}_M + \dot{W}_T) dV. \quad (8)$$

Besides for  $\mathbf{F}$ , and hence  $\dot{W}_M$ , in section 2.3, also for  $\dot{W}_T$  an expression in terms of existing variables will be derived. The source term  $\int_V (\dot{W}_M + \dot{W}_T) dV$  is the net rate of work performed by fluid 2 on fluid 1. By applying the divergence theorem to the surface integrals of equations (5), (6) and (8), the unknown integration parameter  $S_1(t)$  disappears, still leaving  $V_1(t)$  as an unknown.

Several methods exist to find the interface location and thus  $V_1(t)$ . An important class is formed by the level-set methods – see the archival paper [18] and the monographs [20, 29] – which are interface-tracking methods. Interface tracking requires an extra transport equation. Here we choose the interface-capturing approach. For this purpose, the volume fraction of fluid 1,

$$\alpha = \frac{V_1}{V}, \quad (9)$$

is introduced, to enable integration over the volume  $V$  instead of over  $V_1(t)$ , simplifying equations (5) and (8) to:



$$\frac{\partial}{\partial t} \int_V \alpha \rho_1 dV + \int_V \nabla \cdot \alpha \rho_1 \mathbf{V} dV = 0, \quad (10)$$

$$\frac{\partial}{\partial t} \int_V \alpha \rho_1 E_1 dV + \int_V \nabla \cdot \alpha \rho_1 E_1 \mathbf{V} dV + \int_V \nabla \cdot \alpha p \mathbf{V} dV = \int_V (\dot{W}_M + \dot{W}_T) dV. \quad (11)$$

The same kind of equations can be derived for fluid 2, with  $1 - \alpha$  the volume fraction of fluid 2. By adding these equations for fluid 2 to equations (10) and (11), they must result in the bulk equations (2) and (4), implying the following expressions for bulk density and bulk total energy:

$$\rho = \alpha \rho_1 + (1 - \alpha) \rho_2, \quad (12)$$

$$\rho E = \alpha \rho_1 E_1 + (1 - \alpha) \rho_2 E_2, \quad (13)$$

with the total energy for each fluid defined as

$$E_1 = e_1 + \frac{1}{2} \mathbf{V} \cdot \mathbf{V}, \quad (14a)$$

$$E_2 = e_2 + \frac{1}{2} \mathbf{V} \cdot \mathbf{V}. \quad (14b)$$

Through the equations of state, the internal energies  $e_1$  and  $e_2$  can be written as functions of the density of the corresponding fluid and the pressure:

$$e_1 = e_1(\rho_1, p), \quad (15a)$$

$$e_2 = e_2(\rho_2, p). \quad (15b)$$

The bulk internal energy  $e$  is defined by

$$\rho e = \alpha \rho_1 e_1 + (1 - \alpha) \rho_2 e_2. \quad (16)$$

This consistently implies

$$E = e + \frac{1}{2} \mathbf{V} \cdot \mathbf{V}. \quad (17)$$

As soon as the energy-exchange terms  $\dot{W}_M$  and  $\dot{W}_T$  are expressed in terms of already introduced variables (in primitive form:  $p, \mathbf{V}, \rho_1, \rho_2$  and  $\alpha$ ), the system of equations is closed. In differential form, the practical form for deriving the rate-of-work terms  $\dot{W}_M$  and  $\dot{W}_T$ , the system reads:

$$\frac{\partial \rho}{\partial t} + \nabla \cdot (\rho \mathbf{V}) = 0, \quad (18a)$$

$$\frac{\partial (\rho \mathbf{V})}{\partial t} + \nabla \cdot (\rho \mathbf{V} \otimes \mathbf{V}) + \nabla p = \mathbf{0}, \quad (18b)$$

$$\frac{\partial (\rho E)}{\partial t} + \nabla \cdot (\rho E \mathbf{V}) + \nabla \cdot (p \mathbf{V}) = 0, \quad (18c)$$

$$\frac{\partial (\alpha \rho_1)}{\partial t} + \nabla \cdot (\alpha \rho_1 \mathbf{V}) = 0, \quad (18d)$$

$$\frac{\partial (\alpha \rho_1 E_1)}{\partial t} + \nabla \cdot (\alpha \rho_1 E_1 \mathbf{V}) + \nabla \cdot (\alpha p \mathbf{V}) = \dot{W}_M + \dot{W}_T. \quad (18e)$$

These equations may be cast into the compact form

$$\frac{\partial \mathbf{q}}{\partial t} + \nabla \cdot \mathcal{F}(\mathbf{q}) = \mathbf{S}(\mathbf{q}). \quad (19)$$

### 2.3. Rate-of-work terms

The derivation of the energy-exchange terms is done for flow solutions for which first-order spatial derivatives are assumed to exist.

#### 2.3.1. Mechanical work

The rate of mechanical work  $\dot{W}_M$  is derived using velocity-equilibrium relation (1b). We start by considering the momentum equation of fluid 1 in differential form:

$$\frac{\partial(\alpha\rho_1\mathbf{V})}{\partial t} + \nabla \cdot (\alpha\rho_1\mathbf{V} \otimes \mathbf{V}) + \nabla(\alpha p) = \mathbf{F}. \quad (20)$$

Here it already appears that momentum equation (20) is a dependent equation, because it does not give new time-derivative information;  $\frac{\partial(\alpha\rho_1)}{\partial t}$  is already described by equation (18d), and  $\frac{\partial\mathbf{V}}{\partial t}$  by (18a) and (18b). The purpose of equation (20) is to derive an expression for the force  $\mathbf{F}$ .

By expanding (20) and substituting (18d), we get the primitive equation

$$\frac{D\mathbf{V}}{Dt} + \frac{1}{\alpha\rho_1}\nabla(\alpha p) = \frac{1}{\alpha\rho_1}\mathbf{F}. \quad (21)$$

The similar can be done for bulk momentum equation (18b); expanding (18b) and substituting (18a), we find:

$$\frac{D\mathbf{V}}{Dt} + \frac{1}{\rho}\nabla p = 0. \quad (22)$$

Eliminating  $\frac{D\mathbf{V}}{Dt}$  from (21) and (22), we get

$$\mathbf{F} = \nabla(\alpha p) - \frac{\alpha\rho_1}{\rho}\nabla p = p\nabla\alpha + (\alpha - \beta)\nabla p, \quad (23)$$

where an additional symbol has been introduced,  $\beta$ , the mass fraction of fluid 1,

$$\beta = \frac{\alpha\rho_1}{\rho}. \quad (24)$$

Hence, the rate of energy exchange due to mechanical work can be expressed in terms of the existing variables as

$$\dot{W}_M = p\mathbf{V} \cdot \nabla\alpha + (\alpha - \beta)\mathbf{V} \cdot \nabla p. \quad (25)$$

The two force terms in the righthand side of (23) can still be interpreted.

The term  $p\nabla\alpha$  is best explained by making a comparison with quasi-1D channel-flow, figure 1a. For a channel flow with variable area, it can be written

$$\oint_S p \mathbf{n} dS = p_1 A_1 - p_0 A_0 - \int_0^1 p dA, \quad (26)$$

with  $S$  the closed, red contour. In differential form this becomes

$$p \mathbf{n} dS = d(pA) - p dA. \quad (27)$$

Analogously, in our two-fluid model, figure 1b, we have the forces  $\nabla(\alpha p)$  and  $p\nabla\alpha$ . The former represents the net pressure force at the two vertical faces, at  $x$  and  $x + dx$ . The latter is the pressure force acting on the upper (in this example curvilinear) two-fluid interface in between  $x$  and  $x + dx$ .

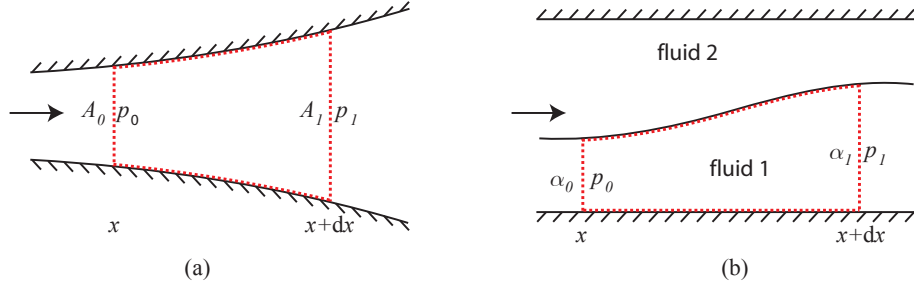


Fig. 1. Similarity between quasi-1D channel flow (a) and the two-fluid flow model (b).

To interpret the term  $(\alpha - \beta)\nabla p$ , consider for example an expansion. Then we know that the pressure drops ( $dp < 0$ ) and the velocity rises ( $d\mathbf{V} > 0$ ). Newton's second law of motion tells that the amount of acceleration of each of the two fluids is inversely proportional to their densities. So when the density of fluid 1 is for instance lower than that of fluid 2,  $\beta < \alpha$ , then the velocity of fluid 1 tends to become higher than that of fluid 2. The force  $(\alpha - \beta)\nabla p$ , exerted by fluid 2 on fluid 1, prevents this. It is the force that ensures velocity equilibrium.

### 2.3.2. Thermodynamic work

For the derivation of the rate of thermodynamic work  $\dot{W}_T$ , and also for further analysis purposes, first some other primitive equations are derived.

2.3.2.1. *More primitive equations.* With equations (17), (18a) and (22), equation (18c) for the bulk energy is rewritten as

$$\frac{De}{Dt} + \frac{p}{\rho}\nabla \cdot \mathbf{V} = 0. \quad (28)$$

For the densities  $\rho_1$  and  $\rho_2$ , the following two primitive equations hold:

$$\frac{D\rho_1}{Dt} + \frac{\rho_1}{\alpha} \frac{D\alpha}{Dt} + \rho_1 \nabla \cdot \mathbf{V} = 0, \quad (29a)$$

$$\frac{D\rho_2}{Dt} - \frac{\rho_2}{1-\alpha} \frac{D\alpha}{Dt} + \rho_2 \nabla \cdot \mathbf{V} = 0. \quad (29b)$$

And equation (18a), (18d) and (24) result in the primitive equation for the mass fraction:

$$\frac{D\beta}{Dt} = 0. \quad (30)$$

Hence, the mass fraction is convected with the flow. This is obvious; a fluid blob (possibly containing both fluids) remains to contain the same fluid particles over time. Finally, with equations (14a), (18d), (22), (24) and (25), from (18e) the following primitive equation is derived for the internal energy  $e_1$ :

$$\frac{De_1}{Dt} + \frac{p}{\rho_1}\nabla \cdot \mathbf{V} = \frac{\dot{W}_T}{\alpha\rho_1}. \quad (31a)$$

Similarly, for fluid 2 we find:

$$\frac{De_2}{Dt} + \frac{p}{\rho_2}\nabla \cdot \mathbf{V} = -\frac{\dot{W}_T}{(1-\alpha)\rho_2}. \quad (31b)$$

2.3.2.2. *Isentropic compressibility relations.* Here, non-adiabatic processes, like external heating, are not considered, as are viscosity, heat conduction and discontinuities. Hence, the two fluids flow isentropically;

$$\frac{Ds_1}{Dt} = 0, \quad (32a)$$

$$\frac{Ds_2}{Dt} = 0. \quad (32b)$$

Equation (32) allows us to also derive primitive equations for the pressure and volume fraction. The pressure can be expressed in two independent thermodynamic variables. At first the pressure is expressed as a function of the entropy and the density of both fluids:  $p = p(s_1, \rho_1)$ ,  $p = p(s_2, \rho_2)$ . Taking the total derivative of the pressure and substituting equation (32), we get

$$\frac{Dp}{Dt} = \left( \frac{\partial p}{\partial \rho_1} \right)_{s_1} \frac{D\rho_1}{Dt} = c_1^2 \frac{D\rho_1}{Dt}, \quad (33a)$$

$$\frac{Dp}{Dt} = \left( \frac{\partial p}{\partial \rho_2} \right)_{s_2} \frac{D\rho_2}{Dt} = c_2^2 \frac{D\rho_2}{Dt}, \quad (33b)$$

with  $c_1$  and  $c_2$  the speeds of sound of both fluids. With (29a) and (29b), respectively, (33a) and (33b) can be rewritten as:

$$\frac{Dp}{Dt} + \rho_1 c_1^2 \left( \frac{1}{\alpha} \frac{D\alpha}{Dt} + \nabla \cdot \mathbf{V} \right) = 0, \quad (34a)$$

$$\frac{Dp}{Dt} + \rho_2 c_2^2 \left( \frac{-1}{1-\alpha} \frac{D\alpha}{Dt} + \nabla \cdot \mathbf{V} \right) = 0. \quad (34b)$$

By eliminating the pressure derivatives, the primitive equation for the volume fraction is found:

$$\frac{D\alpha}{Dt} + \varphi \nabla \cdot \mathbf{V} = 0, \quad \varphi = \alpha(1-\alpha) \frac{\frac{1}{\rho_2 c_2^2} - \frac{1}{\rho_1 c_1^2}}{\frac{\alpha}{\rho_1 c_1^2} + \frac{1-\alpha}{\rho_2 c_2^2}}. \quad (35)$$

Let us take a closer look at equation (35). We follow a fluid blob containing both fluids. To what extent the volume of each separate fluid in the blob will change under compression or expansion depends on the compressibilities of the fluids. The terms  $\frac{1}{\rho_1 c_1^2}$  and  $\frac{1}{\rho_2 c_2^2}$  are the isentropic compressibilities,  $\tau_1$  and  $\tau_2$ , of both fluids:

$$\tau_1 = \frac{1}{\rho_1} \left( \frac{\partial \rho_1}{\partial p} \right)_{s_1} = \frac{1}{\rho_1 c_1^2}, \quad (36a)$$

$$\tau_2 = \frac{1}{\rho_2} \left( \frac{\partial \rho_2}{\partial p} \right)_{s_2} = \frac{1}{\rho_2 c_2^2}. \quad (36b)$$

Defining the bulk isentropic compressibility as

$$\tau = \alpha \tau_1 + (1-\alpha) \tau_2, \quad (37)$$

(35) can be compactly written as

$$\frac{D\alpha}{Dt} + \alpha(1-\alpha) \frac{\tau_2 - \tau_1}{\tau} \nabla \cdot \mathbf{V} = 0. \quad (38)$$

Equation (38) shows that a difference in compressibility of the two fluids ( $\tau_2 - \tau_1 \neq 0$ ), under compression or expansion ( $\nabla \cdot \mathbf{V} \neq 0$ ), causes a change in volume fraction. As an example, suppose the flow element expands, then  $\nabla \cdot \mathbf{V} > 0$ . If fluid 1 is more compressible than fluid 2, so  $\tau_1 > \tau_2$ , then the volume fraction of fluid 1 must increase,  $\frac{D\alpha}{Dt} > 0$ . Pressure equilibrium under compression or expansion is ensured by a change in volume fraction.

Finally, as the primitive equation for the pressure it follows by elimination of  $\frac{D\alpha}{Dt}$  from (34):

$$\frac{Dp}{Dt} + \frac{1}{\tau} \nabla \cdot \mathbf{V} = \frac{Dp}{Dt} + \rho c^2 \nabla \cdot \mathbf{V} = 0, \quad (39)$$

where we have written the bulk compressibility  $\tau$  in terms of the bulk density  $\rho$  and a bulk speed of sound  $c$ . With (36) and (37) it follows that  $c$  is implicitly defined through the harmonic mean

$$\frac{1}{\rho c^2} = \frac{\alpha}{\rho_1 c_1^2} + \frac{1 - \alpha}{\rho_2 c_2^2}. \quad (40)$$

**2.3.2.3. Thermodynamic work relations.** We now choose to express the pressure in terms of the density and internal energy of both fluids:  $p = p(e_1, \rho_1)$ ,  $p = p(e_2, \rho_2)$ . It holds:

$$\frac{Dp}{Dt}(e_1, \rho_1) = \frac{Dp}{Dt}(e_2, \rho_2). \quad (41)$$

The pressure derivatives can be expanded into the thermodynamic variables:

$$\left( \frac{\partial p}{\partial e_1} \right)_{\rho_1} \frac{De_1}{Dt} + \left( \frac{\partial p}{\partial \rho_1} \right)_{e_1} \frac{D\rho_1}{Dt} = \left( \frac{\partial p}{\partial e_2} \right)_{\rho_2} \frac{De_2}{Dt} + \left( \frac{\partial p}{\partial \rho_2} \right)_{e_2} \frac{D\rho_2}{Dt}. \quad (42)$$

With equations (29) and (31), this can be rewritten as

$$\begin{aligned} \dot{W}_T \left( \frac{1}{\alpha \rho_1} \left( \frac{\partial p}{\partial e_1} \right)_{\rho_1} + \frac{1}{(1 - \alpha) \rho_2} \left( \frac{\partial p}{\partial e_2} \right)_{\rho_2} \right) &= \frac{D\alpha}{Dt} \left( \frac{\rho_1}{\alpha} \left( \frac{\partial p}{\partial \rho_1} \right)_{e_1} + \frac{\rho_2}{1 - \alpha} \left( \frac{\partial p}{\partial \rho_2} \right)_{e_2} \right) + \\ &\left( \rho_1 \left( \frac{\partial p}{\partial \rho_1} \right)_{e_1} + \frac{p}{\rho_1} \left( \frac{\partial p}{\partial e_1} \right)_{\rho_1} - \rho_2 \left( \frac{\partial p}{\partial \rho_2} \right)_{e_2} - \frac{p}{\rho_2} \left( \frac{\partial p}{\partial e_2} \right)_{\rho_2} \right) \nabla \cdot \mathbf{V}. \end{aligned} \quad (43)$$

Again we make use of the speed of sound of each fluid, but now with the current thermodynamic variables used in the equations of state,

$$c_1^2 = \left( \frac{\partial p}{\partial \rho_1} \right)_{s_1} = \left( \frac{\partial p}{\partial \rho_1} \right)_{e_1} + \frac{p}{\rho_1^2} \left( \frac{\partial p}{\partial e_1} \right)_{\rho_1}, \quad (44a)$$

$$c_2^2 = \left( \frac{\partial p}{\partial \rho_2} \right)_{s_2} = \left( \frac{\partial p}{\partial \rho_2} \right)_{e_2} + \frac{p}{\rho_2^2} \left( \frac{\partial p}{\partial e_2} \right)_{\rho_2}. \quad (44b)$$

From (43), with (44) and primitive equation (35) for  $\alpha$ , it then formally follows

$$\dot{W}_T = -p \frac{D\alpha}{Dt}. \quad (45)$$

The term  $-p \frac{D\alpha}{Dt}$  clearly is a rate of thermodynamic work term. It is the rate of work performed on the two-fluid interface, which causes the interface to move such that pressure

equilibrium under compression or expansion is ensured. With equation (38), expression (45) for  $\dot{W}_T$  can be rewritten in terms of spatial derivatives only:

$$\dot{W}_T = p\alpha(1 - \alpha)\frac{\tau_2 - \tau_1}{\tau}\nabla \cdot \mathbf{V}. \quad (46)$$

### 2.3.3. Complete rate-of-work term and remarks about discontinuities

Addition of equations (25) and (46) finally gives us the total rate of energy exchange per unit volume between fluid 2 and fluid 1, expressed in existing variables:

$$\dot{W} = \dot{W}_M + \dot{W}_T = p\mathbf{V} \cdot \nabla\alpha + (\alpha - \beta)\mathbf{V} \cdot \nabla p + p\alpha(1 - \alpha)\frac{\tau_2 - \tau_1}{\tau}\nabla \cdot \mathbf{V}. \quad (47)$$

The model derived so far is not valid across discontinuities, where locally the derivatives of the state variables do not exist. To allow discontinuities in the flow, jump conditions have to be derived that describe the behavior of the two-fluid flow over a discontinuity. This is not as straightforward as it is in single-fluid Euler flow. For the present five-equation model, for a simplified case, jump conditions are derived in [34].

Our numerical treatment of the rate-of-work terms, to be presented in the next section, does not need jump conditions though. It makes a neat, smooth approximation of jumps. Anticipating to the numerical results for two-fluid shock-tube problems with known exact solutions, we can already state that this smooth approximation of discontinuities in evaluating the work terms, gives very good results.

## 3. Numerical method

### 3.1. Equations

We consider the equations in integral form, i.e., (19) is rewritten as:

$$\frac{\partial}{\partial t} \int_{\Omega} \mathbf{q} d\Omega + \oint_{\Gamma} \mathcal{F} \cdot \mathbf{n} d\Gamma = \int_{\Omega} \mathbf{S} d\Omega, \quad (48a)$$

with, in 3D, writing the velocity vector in its three components,  $\mathbf{V} = (u, v, w)$ :

$$\mathbf{q} = \begin{pmatrix} \rho \\ \rho u \\ \rho v \\ \rho w \\ \rho E \\ \alpha \rho_1 \\ \alpha \rho_1 E_1 \end{pmatrix}, \quad (48b)$$

$$\mathcal{F}(\mathbf{q}) = (\mathbf{f}(\mathbf{q}), \mathbf{g}(\mathbf{q}), \mathbf{h}(\mathbf{q})),$$

$$\mathbf{f} = \begin{pmatrix} \rho u \\ \rho u^2 + p \\ \rho uv \\ \rho uw \\ \rho u \left( E + \frac{p}{\rho} \right) \\ \alpha \rho_1 u \\ \alpha \rho_1 u \left( E_1 + \frac{p}{\rho_1} \right) \end{pmatrix}, \quad \mathbf{g} = \begin{pmatrix} \rho v \\ \rho v u \\ \rho v^2 + p \\ \rho v w \\ \rho v \left( E + \frac{p}{\rho} \right) \\ \alpha \rho_1 v \\ \alpha \rho_1 v \left( E_1 + \frac{p}{\rho_1} \right) \end{pmatrix}, \quad \mathbf{h} = \begin{pmatrix} \rho w \\ \rho w u \\ \rho w v \\ \rho w^2 + p \\ \rho w \left( E + \frac{p}{\rho} \right) \\ \alpha \rho_1 w \\ \alpha \rho_1 w \left( E_1 + \frac{p}{\rho_1} \right) \end{pmatrix}, \quad (48c)$$

$$\mathbf{S}(\mathbf{q}) = \begin{pmatrix} 0 \\ 0 \\ 0 \\ 0 \\ 0 \\ 0 \\ 0 \\ \dot{W} \end{pmatrix} = \begin{pmatrix} 0 \\ 0 \\ 0 \\ 0 \\ 0 \\ 0 \\ 0 \\ p \mathbf{V} \cdot \nabla \alpha + (\alpha - \beta) \mathbf{V} \cdot \nabla p + p \alpha (1 - \alpha) \frac{\tau_2 - \tau_1}{\tau} \nabla \cdot \mathbf{V} \end{pmatrix}. \quad (48d)$$

In our numerical method,  $\Omega$  is a cell-centered finite volume, fixed in space, with contour  $\Gamma$  and unit normal  $\mathbf{n} = (n_x, n_y, n_z)$  on  $\Gamma$ . We proceed by describing the numerical treatment of the lefthand side of this equation, in section 3.2, and next the righthand side, in section 3.3.

### 3.2. Flux evaluation and time integration

The lefthand side of (48a) is treated with well-proven numerical methods. For the flux evaluation an Osher-type approximate Riemann solver [21] is constructed, in the so-called P(hysical) variant [10]. The Riemann solver gets limited higher-order accurate left and right cell-face states as input (MUSCL approach). The limiter applied is the one of the second author [15]. It corresponds to the maximal possible extent with Van Leer's  $\kappa = \frac{1}{3}$  scheme [33], within Sweby's TVD domain [31]. Its accuracy properties are known to be good [35].

#### 3.2.1. Flux evaluation

The system of equations is fully hyperbolic. For the 1D case, the wave speeds are:

$$\lambda_1 = u - c, \quad \lambda_{2,3,4} = u, \quad \lambda_5 = u + c. \quad (49)$$

A finite volume containing both fluids, has only one speed of sound, the bulk speed of sound. In the seven-equation model of Baer and Nunziato [5], two different speeds of sound may occur in a single finite volume.

The Riemann invariants  $\psi_k$  of the system of equations are prescribed by the following set of differential equations:

$$\begin{aligned} d\psi_1 &= du - \frac{dp}{\rho c}, & d\psi_2 &= dp - c^2 d\rho, & d\psi_3 &= d\beta, \\ d\psi_4 &= \rho d\alpha - \varphi d\rho, & d\psi_5 &= du + \frac{dp}{\rho c}. \end{aligned} \quad (50)$$

Three of the five equations, those for  $\psi_1$ ,  $\psi_2$  and  $\psi_5$ , also occur in the single-fluid Euler model. The equations for  $\psi_3$  and  $\psi_4$  contain the fraction variables that are specific for this two-fluid model. The Riemann invariants  $\psi_3$  and  $\psi_4$  show again that the mass fraction is convected with the flow, whereas the volume fraction is not. Along the wave path in solution space, with the subpaths in P-variant ordering [10], the Riemann invariants are distributed as shown in figure 2.

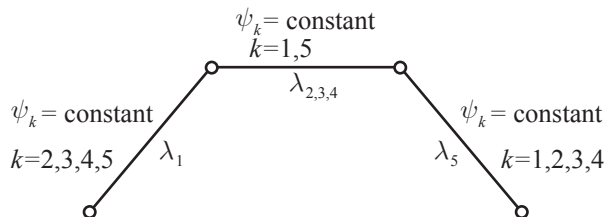


Fig. 2. Wave path in solution space, for 1D physical space, in P-variant ordering, with corresponding Riemann-invariant ordering.

Unlike the Riemann invariants of, e.g., the single-fluid, perfect-gas Euler equations, it is not possible to write explicit expressions for the current Riemann invariants  $\psi_k$ , along all three subpaths of the wavepath, not even for perfect gases. For the middle subpath we can, but for the left and right subpath we can not. We rewrite (50) into a system of ordinary differential equations which has to be solved numerically to compute the intermediate solutions  $\mathbf{q}^{\text{LM}}$  and  $\mathbf{q}^{\text{RM}}$  (figure 3).

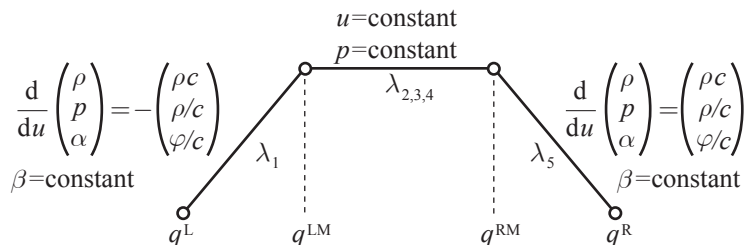


Fig. 3. Wave path in solution space, for 1D physical space, with intermediate solutions  $\mathbf{q}^{\text{LM}}$  and  $\mathbf{q}^{\text{RM}}$ , ordinary differential equations along left and right subpath, and explicit Riemann invariants along the three subpaths.

As independent variable for the system of differential equations, we may choose the velocity component  $u$ . This results in:

$$\frac{dp}{du} = \pm \rho c, \quad \frac{d\rho}{du} = \pm \frac{\rho}{c}, \quad \frac{d\alpha}{du} = \pm \frac{\varphi}{c}, \quad \beta = \text{constant}, \quad (51)$$



where the ‘+’ sign stands for a right running wave and the ‘-’ sign for a left running wave. Alternatively, we may integrate with the pressure  $p$  as independent variable. This gives the following set of differential equations:

$$\frac{du}{dp} = \pm \frac{1}{\rho c}, \quad \frac{d\rho}{dp} = \frac{1}{c^2}, \quad \frac{d\alpha}{dp} = \frac{\varphi}{\rho c^2}, \quad \beta = \text{constant}. \quad (52)$$

Here we choose to integrate the form (51). The integration is done by the standard explicit, four-stage Runge-Kutta scheme. The differential equations to be integrated along the left and right subpaths, using the solutions  $\mathbf{q}^L$  and  $\mathbf{q}^R$  as the respective initial solutions, are summarized in figure 3, together with the explicit Riemann invariant  $\beta$ . The middle subpath in figure 3 shows the explicitly computed Riemann invariants. The latter two imply

$$u^{\text{LM}} = u^{\text{RM}} = u^{\text{M}}, \quad (53a)$$

$$p^{\text{LM}} = p^{\text{RM}} = p^{\text{M}}. \quad (53b)$$

For 2D and 3D computations we simply follow the locally 1D approach (directional splitting). For 3D, this implies the wave paths depicted in figure 4. Along the left and right subpaths, the extra Riemann invariants  $v$  (2D and 3D) and  $w$  (3D only) appear. Along the middle subpath, only the multiplicity of the eigenvalue increases with increasing dimensionality.

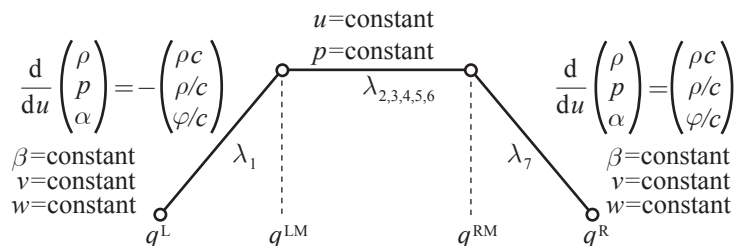


Fig. 4. Wave paths in solution space, for 3D physical space, with intermediate solutions  $\mathbf{q}^{\text{LM}}$  and  $\mathbf{q}^{\text{RM}}$ , ordinary differential equations along left and right subpaths, and explicit Riemann invariants along the subpaths.

### 3.2.2. Time integration

For the time integration, use is made of the explicit, third-order accurate, three-stage TVD Runge-Kutta scheme RK3b from [11].

### 3.3. Source-term evaluation

For the evaluation of the righthand side of (48a),

$$\int_{\Omega} \dot{W} d\Omega = \int_{\Omega} (p\mathbf{V} \cdot \nabla\alpha + (\alpha - \beta)\mathbf{V} \cdot \nabla p + p\varphi\nabla \cdot \mathbf{V}) d\Omega, \quad (54)$$

we need the spatial distribution of the discrete state variables. For convenience, we start by considering the 1D case. For each of the three terms in the righthand side of (54), two qualitatively different types of contributions may arise when integrating over a finite

volume: (i) contributions from the *continuous* solution in the cell and (ii) contributions from the *discontinuous* solutions at the two cell faces (figure 5a). The solution *at* the cell face is denoted by  $\mathbf{q}^F$ . The cell-face contributions can not be ignored. This is obvious when considering the integral over, e.g., the bi-cell  $\Omega_{i-1} \cup \Omega_i$ , in which the integral at cell face  $i - \frac{1}{2}$  is included and thus must be evaluated. Since the bi-cell integral can be partitioned as

$$\int_{\Omega_{i-1} \cup \Omega_i} \mathbf{S} dx = \int_{\Omega_{i-1}} \mathbf{S} dx + \int_{\Omega_i} \mathbf{S} dx, \quad (55)$$

this proves that cell-face contributions can not be ignored in single-cell integrals either. Equation (55) also shows that the contribution to  $\int_{\Omega_{i-1} \cup \Omega_i}$  of the entire discontinuity at cell face  $i - \frac{1}{2}$  has to be split somehow over  $\int_{\Omega_{i-1}}$  and  $\int_{\Omega_i}$ . We proceed by presenting an elegant and physically correct splitting.

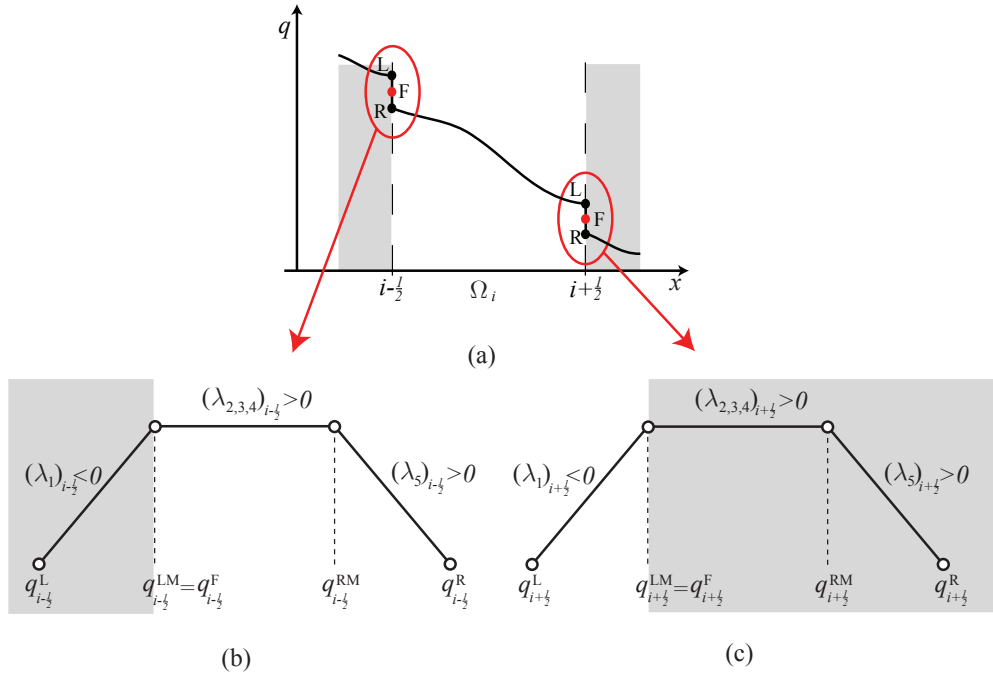


Fig. 5. Distribution of a solution component in and around finite volume  $\Omega_i$  (a), together with corresponding wave paths in solution space (in P-variant ordering and for a subsonic flow from the left to the right), at cell faces  $i - \frac{1}{2}$  (b) and  $i + \frac{1}{2}$  (c).

At cell faces, the source term is not Riemann integrable. We circumvent this difficulty by making consistent use of our Osher-type approximate Riemann solver. I.e., instead of in physical space, at all cell faces, the integration of the source term is done in solution space. Per cell we make the following partitioning:

$$\int_{\Omega_i} \dot{W} dx = \int_{\mathbf{q}_{i-\frac{1}{2}}^F}^{\mathbf{q}_{i-\frac{1}{2}}^R} \dot{W} d\mathbf{q} + \int_{x_{i-\frac{1}{2}}}^{x_{i+\frac{1}{2}}} \dot{W} dx + \int_{\mathbf{q}_{i+\frac{1}{2}}^L}^{\mathbf{q}_{i+\frac{1}{2}}^F} \dot{W} d\mathbf{q}. \quad (56)$$

The second integration in the righthand side of (56) is done in physical space, for the continuous solution distribution inside the cell, i.e., the distribution starting with  $\mathbf{q}_{i-\frac{1}{2}}^R$  at  $x_{i-\frac{1}{2}}$  and ending with  $\mathbf{q}_{i+\frac{1}{2}}^L$  at  $x_{i+\frac{1}{2}}$ . The first and third integration are done in solution space, for all waves that propagate from both cell faces into cell  $\Omega_i$ . This is schematically illustrated in figures 5b and 5c, for the example of a subsonic flow in positive  $x$ -direction.

In both figures, the wave path in state space has been sketched, with the subpaths in the P-variant ordering. The two subpaths at the right of  $\mathbf{q}_{i-\frac{1}{2}}^{LM} = \mathbf{q}_{i-\frac{1}{2}}^F$  in figure 5b correspond with the waves propagating from cell face  $i - \frac{1}{2}$  into cell  $\Omega_i$ . The subpath at the left of  $\mathbf{q}_{i+\frac{1}{2}}^{RM} = \mathbf{q}_{i+\frac{1}{2}}^F$  in figure 5c corresponds with the wave propagating from cell face  $i + \frac{1}{2}$  into cell  $\Omega_i$ . Hence, in evaluating  $\int_{\Omega_i} \dot{W} dx$ , at cell face  $i - \frac{1}{2}$  the right running waves are taken into account, and at cell face  $i + \frac{1}{2}$  the left running waves. This defines the splitting of the source-term integral at a single cell face: the part of  $\int_{\mathbf{q}_{i-\frac{1}{2}}^L}^{\mathbf{q}_{i-\frac{1}{2}}^R} \dot{W} dq$  which corresponds with left running waves (negative eigenvalues) contributes to  $\Omega_{i-1}$ , and the part corresponding with right running waves (positive eigenvalues) contributes to  $\Omega_i$ . Contributions due to possible steady waves (zero eigenvalues) may be equally split over both cells. We proceed by working out the integrals in (56) in more detail.

### 3.3.1. Source in cell interior

When using a first-order accurate finite-volume approximation the state values are supposed to be constant in each cell (figure 6a), implying that the source integral over the cell interior equals zero. In our higher-order accurate spatial discretization the state variables may be supposed to vary piecewise linearly from the cell average in the cell center to the corresponding cell-face values (figure 6b), causing the spatial derivatives to be nonzero.

In 1D, the integral of the source in the cell interior, the second term in the righthand side of (56), can be written as

$$\int_{x_{i-\frac{1}{2}}}^{x_{i+\frac{1}{2}}} \dot{W} dx = \int_{x_{i-\frac{1}{2}}}^{x_i} \left( pu \frac{\partial \alpha}{\partial x} + (\alpha - \beta)u \frac{\partial p}{\partial x} + p\varphi \frac{\partial u}{\partial x} \right) dx + \int_{x_i}^{x_{i+\frac{1}{2}}} \left( pu \frac{\partial \alpha}{\partial x} + (\alpha - \beta)u \frac{\partial p}{\partial x} + p\varphi \frac{\partial u}{\partial x} \right) dx. \quad (57)$$

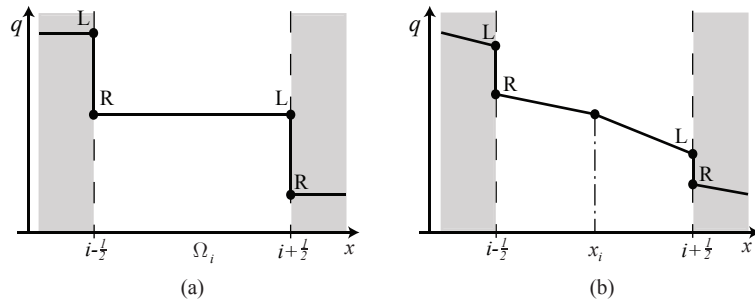


Fig. 6. First-order accurate (a) and second-order accurate (b) distribution of a solution component in the interior of finite volume  $\Omega_i$ .

Given the linear distribution of each solution component in each cell half, this integration can be done exactly. As in 1D, where each cell is split in two halves over which the variables are distributed linearly, similarly, in 2D each cell is split in four surfaces over which the variables are distributed linearly, using the cell-center and cell-face-center values as interpolation nodes. Similarly, in 3D the variables are distributed linearly in eight subvolumes of a cell.

### 3.3.2. Source at cell faces

As the integration parameter in solution space for the first and third integral in (56), we choose  $u$ , in consistency with the choice of the independent variable for the system of differential equations (51). Hence, the two aforementioned integrals in (56) can be written as

$$\int_{u_{i-\frac{1}{2}}^F}^{u_{i-\frac{1}{2}}^R} \dot{W} du = \int_{u_{i-\frac{1}{2}}^F}^{u_{i-\frac{1}{2}}^R} \left( pu \frac{d\alpha}{du} + (\alpha - \beta)u \frac{dp}{du} + p\varphi \right) du, \quad (58a)$$

$$\int_{u_{i+\frac{1}{2}}^L}^{u_{i+\frac{1}{2}}^F} \dot{W} du = \int_{u_{i+\frac{1}{2}}^L}^{u_{i+\frac{1}{2}}^F} \left( pu \frac{d\alpha}{du} + (\alpha - \beta)u \frac{dp}{du} + p\varphi \right) du. \quad (58b)$$

Both (58a) and (58b) are evaluated for each of the involved subpaths. Sticking to the example of figure 5, subsonic flow from the left to the right at both cell faces  $i - \frac{1}{2}$  and  $i + \frac{1}{2}$ , there is a contribution from the middle subpath at cell face  $i - \frac{1}{2}$  only, i.e., to (58a) only. Given the fact that  $u$  and  $p$  are constant across the middle subpath, the middle-subpath contribution to (58a) reads

$$\int_{u_{i-\frac{1}{2}}^{LM}}^{u_{i-\frac{1}{2}}^{RM}} pu \frac{d\alpha}{du} du = p_{i-\frac{1}{2}}^M u_{i-\frac{1}{2}}^M \int_{\alpha_{i-\frac{1}{2}}^{LM}}^{\alpha_{i-\frac{1}{2}}^{RM}} d\alpha = p_{i-\frac{1}{2}}^M u_{i-\frac{1}{2}}^M \left( \alpha_{i-\frac{1}{2}}^{RM} - \alpha_{i-\frac{1}{2}}^{LM} \right). \quad (59)$$

To evaluate the contributions of the right and left subpaths to (58a) and (58b), respectively, we exploit the ordinary differential equations (51) that determine the corresponding Riemann invariants. This yields

$$\int_{u_{i-\frac{1}{2}}^{RM}}^{u_{i-\frac{1}{2}}^R} \dot{W} du = \int_{u_{i-\frac{1}{2}}^M}^{u_{i-\frac{1}{2}}^R} \left( p\varphi \left( 1 + \frac{u}{c} \right) + (\alpha - \beta)\rho cu \right) du, \quad (60a)$$

$$\int_{u_{i+\frac{1}{2}}^L}^{u_{i+\frac{1}{2}}^{LM}} \dot{W} du = \int_{u_{i+\frac{1}{2}}^L}^{u_{i+\frac{1}{2}}^M} \left( p\varphi \left( 1 - \frac{u}{c} \right) - (\alpha - \beta)\rho cu \right) du. \quad (60b)$$

Both integrals, (60a) and (60b), are numerically evaluated, using Simpson's rule along each of the subpaths. In summary, for the example of subsonic flow from the left to the right, (58a) and (58b) become

$$\int_{u_{i-\frac{1}{2}}^F}^{u_{i-\frac{1}{2}}^R} \dot{W} du = p_{i-\frac{1}{2}}^M u_{i-\frac{1}{2}}^M \left( \alpha_{i-\frac{1}{2}}^{RM} - \alpha_{i-\frac{1}{2}}^{LM} \right) + \int_{u_{i-\frac{1}{2}}^M}^{u_{i-\frac{1}{2}}^R} \left( p\varphi \left( 1 + \frac{u}{c} \right) + (\alpha - \beta)\rho cu \right) du, \quad (61a)$$

$$\int_{u_{i+\frac{1}{2}}^L}^{u_{i+\frac{1}{2}}^F} \dot{W} du = \int_{u_{i+\frac{1}{2}}^L}^{u_{i+\frac{1}{2}}^M} \left( p\varphi \left( 1 - \frac{u}{c} \right) - (\alpha - \beta)\rho cu \right) du. \quad (61b)$$

In multi-D, the source at the cell faces is evaluated in the same way, with as the only difference that the role of the velocity component  $u$  is played by the velocity component normal to the cell face.

## 4. Numerical results

In this section we first evaluate the physical model and numerical method presented in the foregoing for three shock-tube problems for which exact solutions exist. Next, more extensively, two standard 2D test cases will be considered: the shock-bubble-interaction problems investigated experimentally by Haas and Sturtevant [9].

In all test cases, the gases considered are perfect gases differing in the ratios of specific heats.

### 4.1. Shock-tube problems

#### 4.1.1. Translating two-fluid interface

This first test case considers a column of dense gas which pushes a column of 1000 times less dense gas from the left to the right, at uniformly constant speed and pressure. The interest of this test case lies in how well physical model and numerical method can resolve pure two-fluid interfaces, in this case a very strong interface. The initial conditions are given in table 1.

	$\rho$	$u$	$p$	$\alpha$	$\beta$	$\gamma$
fluid 1	1000	1	1	1	1	1.4
fluid 2	1	1	1	0	0	1.6

Table 1  
Initial values for the translating two-fluid interface problem.

Numerical and exact results at  $t = 0.1$  are given in figure 7. The CFL number, given by  $\max(\frac{\Delta t}{\Delta x} |\lambda_k|_{i+\frac{1}{2}})$ , is set equal to 0.25 for all three shock-tube problems. Figure 7b shows the important result that the pressure distribution is perfectly oscillation-free without any precaution, even for the current high density ratio  $\frac{\rho_1}{\rho_2}$ . In figure 7d it seems as if the mass fraction incorrectly resolves the location of the two-fluid interface. This is not the case. In most cells containing both fluids  $\beta = \frac{\alpha \rho_1}{\rho} = \frac{1}{1 + \frac{1-\alpha}{\alpha} \frac{\rho_2}{\rho_1}}$  is close to 1 because in most of these cells  $\frac{1-\alpha}{\alpha} \frac{\rho_2}{\rho_1} \ll 1$ .

#### 4.1.2. High-pressure, high-density, two-fluid Sod problem

The second test case is a variant of the well-known Sod problem. Differences are that the density and pressure ratios,  $\frac{\rho_1}{\rho_2}$  and  $\frac{p_1}{p_2}$ , are larger here, and that the left gas and right gas have different ratios of specific heats. The initial conditions are given in table 2.

The difficulty of this test case as compared to the previous one is that the two-fluid interface is not ‘pure’; at  $t = 0$ , immediately after the ‘breaking of the membrane’, it coincides with a shock wave.

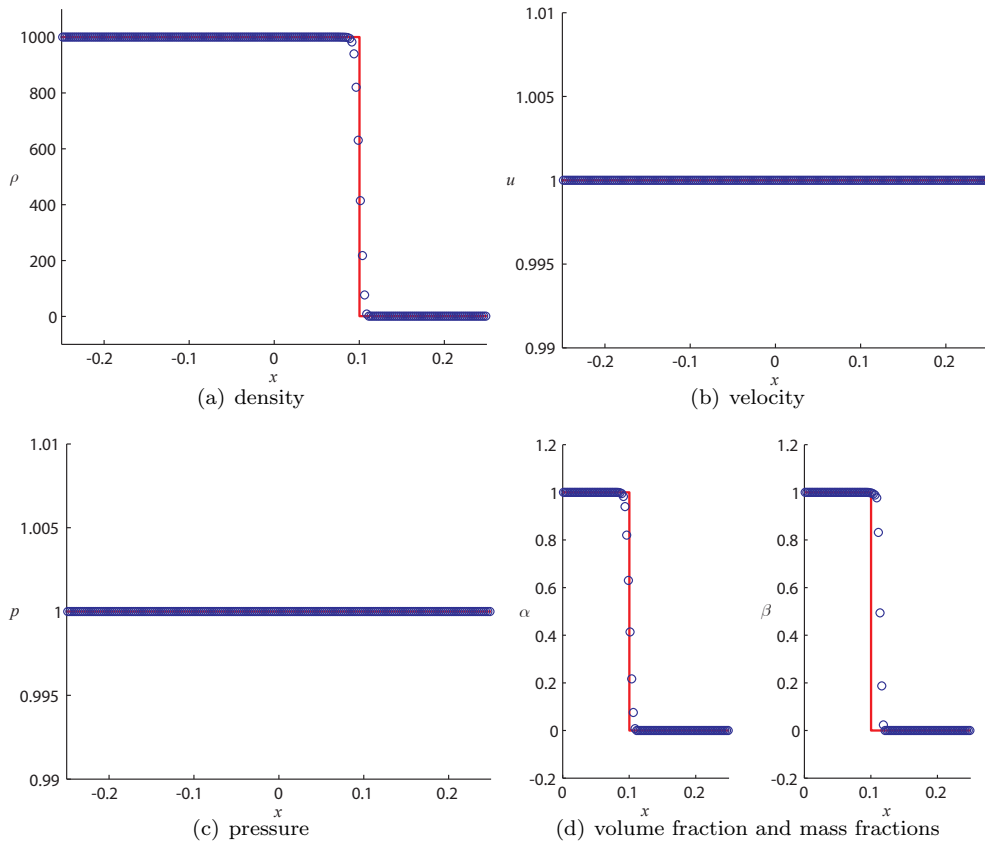


Fig. 7. Numerical “o” and exact “—” solution of the translating interface problem at  $t = 0.1$ , for 200 cells and CFL = 0.25.

	$\rho$	$u$	$p$	$\alpha$	$\beta$	$\gamma$
fluid 1	10	0	10	1	1	1.4
fluid 2	0.125	0	0.1	0	0	1.6

Table 2

Initial values for the high-pressure, high-density, two-fluid Sod problem.

Figure 8 shows the exact and numerical solutions at  $t = 0.075$ . The discontinuities in the numerical solution (shock and two-fluid interface) are in the proper locations. Also here, there are no pressure oscillations near the two-fluid interface.

#### 4.1.3. No-reflection problem

The last shock-tube case differs from the foregoing in that the left gas is not at rest initially. The test case models the problem of a shock wave running through the left gas column and hitting, at  $t = 0$ , the two-fluid interface, which is then still at rest. The initial conditions (table 3) are such that for  $t > 0$ , the two-fluid interface and the transmitted shock wave both move to the right, but that no reflection wave occurs. The latter wave,

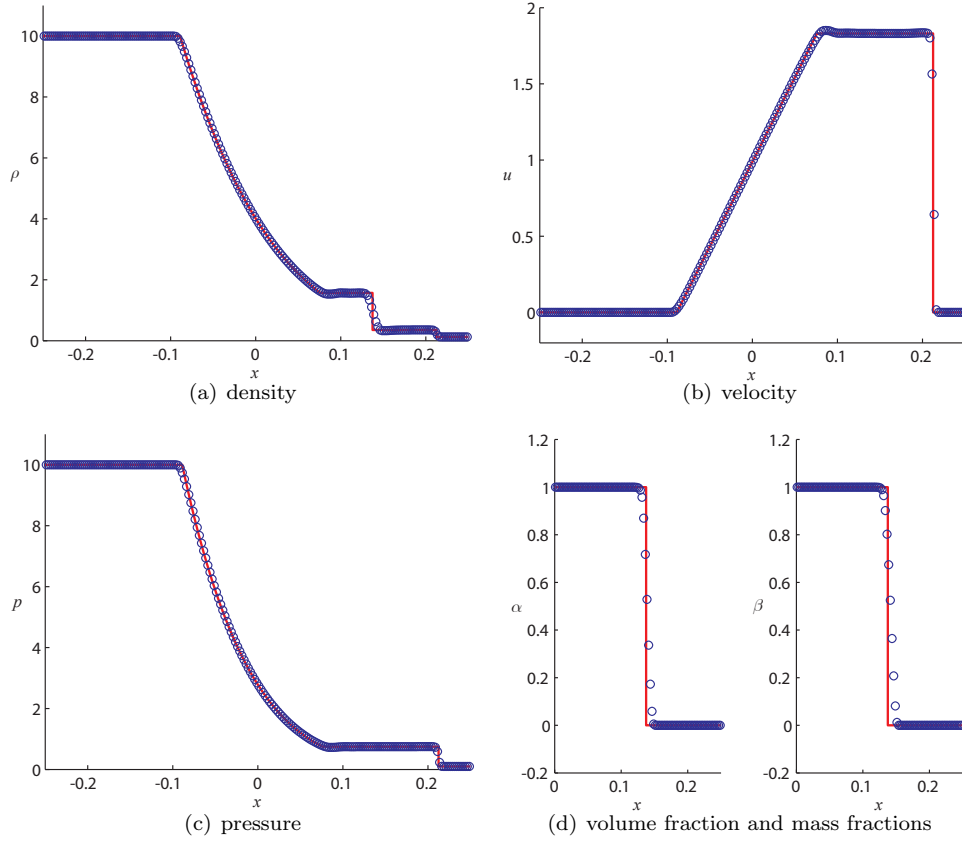


Fig. 8. Numerical “o” and exact “—” solution of the high-pressure, high-density two-fluid Sod problem at  $t = 0.075$ , for 200 cells and  $\text{CFL} = 0.25$ .

	$\rho$	$u$	$p$	$\alpha$	$\beta$	$\gamma$
fluid 1	3.1748	9.4350	100	1	1	1.667
fluid 2	1	0	1	0	0	1.2

Table 3  
Initial values for the no-reflection problem.

which also moves to the right because the flow is supersonic, has zero strength.

The numerical results with corresponding exact results, at  $t = 0.02$ , are given in figure 9. The pressure, density and velocity distributions show a weak reflected wave. Computations at finer grids reveal that it disappears with decreasing mesh width. In figure 9 still another solution is plotted (green). In this solution the source-term contributions at the cell faces, as described in section 3.3.2, were not taken into account. The results clearly show the significance of these contributions.

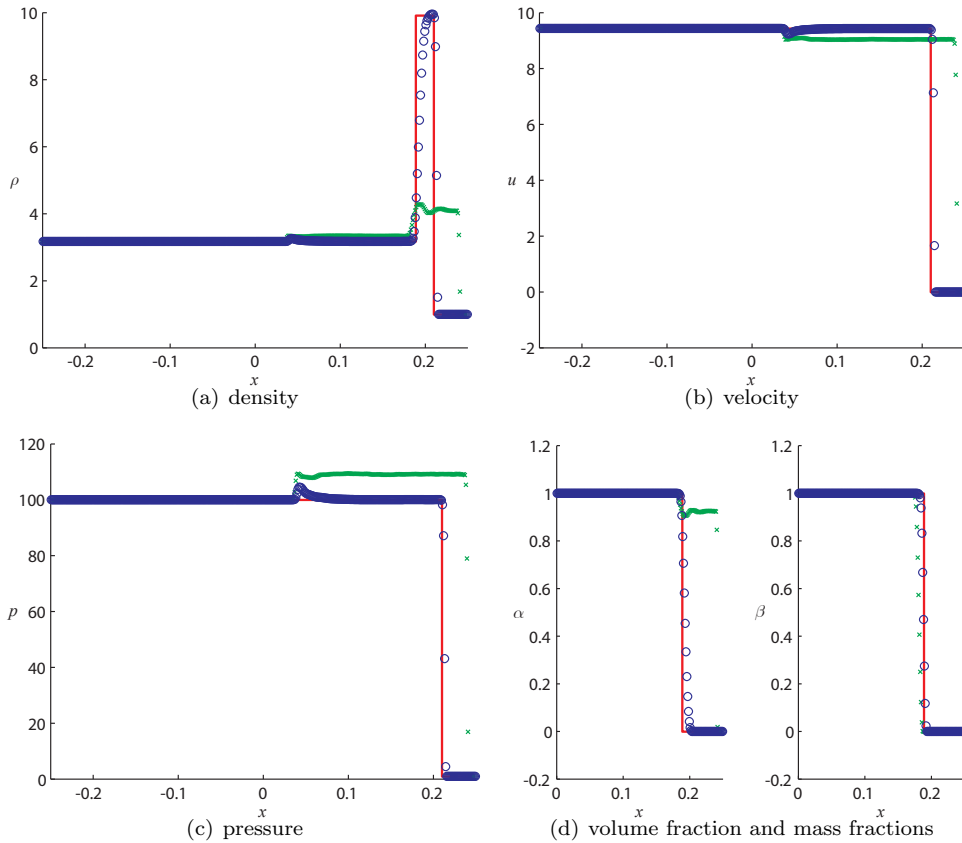


Fig. 9. Numerical “o” and exact “—” solution of the no-reflection problem and the numerical solution where the source at the cell faces are not considered “x”, at  $t = 0.02$ , for 400 cells and  $CFL = 0.25$ .

#### 4.2. Shock-bubble-interaction problems

The well-documented shock-bubble-interaction experiments performed by Haas and Sturtevant [9] yield excellent benchmarks for evaluating physical models and computational methods for compressible two-fluid flows. Haas and Sturtevant did experiments with spherical and cylindrical bubbles. The latter are considered here.

The cylindrical bubble is filled with a gas which is either lighter or heavier than air, and which is at rest initially. The bubble is surrounded by air which is at rest as well. This state of equilibrium is largely perturbed by a shock wave travelling from the right, through the air, towards the cylindrical bubble (figure 10).

The shock hits the bubble. Due to the high velocity of the shock wave and the small size of the bubble (In the experiment, the shock passes the bubble in about  $10^{-4}$  seconds), the two fluids hardly mix. Immiscible, two-fluid flow models are appropriate therefore for these benchmark cases.

The deformation of the cylindrical, two-fluid interface and the resulting wave patterns strongly depend on the kind of gas inside the bubble. Haas and Sturtevant used helium



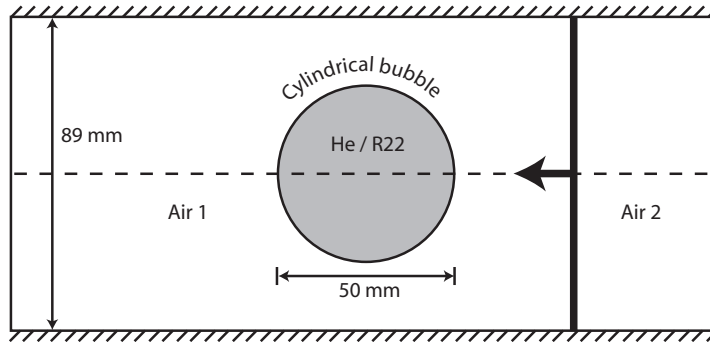


Fig. 10. Initial situation of the shock-bubble-interaction problem, located inside a wind tunnel.

and Refrigerant 22 (R22, a refrigerator gas) for their experiments. The former has a speed of sound higher than that of air, the latter a lower.

We proceed by presenting and discussing our computational results. Comparisons will be made with experimental results. For reasons of computational efficiency, the domain is halved by making use of the symmetry in the flow problems. The domain is divided into  $800 \times 200$  rectangular cells. The numerical results in the next two sections are presented in a window containing  $420 \times 148$  cells, a window with the same size as in the experimental results. The initial conditions of the different gas states are given in table 4. All values of the velocity components are scaled with a speed of sound of  $343 \text{ m/s}$ . The helium is slightly contaminated with air, which explains its  $\gamma$ -value somewhat below  $\frac{5}{3}$ .

	$\gamma$	$\rho$	$u$	$v$	$p$	$\alpha$	$\beta$
air 1	1.4	1.4	0	0	1	1	1
air 2	1.4	1.92691	0.33361	0	1.5698	1	1
helium	1.648	0.25463	0	0	1	0	0
R22	1.249	4.41540	0	0	1	0	0

Table 4  
Initial conditions and gas properties for the shock-bubble-interaction problems.

#### 4.2.1. R22 bubble

R22 has a higher density and lower ratio of specific heats than air, resulting in an about two times lower speed of sound. The lower speed of sound causes the shock in the bubble, the refracted shock, to lag behind the incoming shock (figure 11). Due to the circular shape of the bubble, the refracted shock is curved. For the same reason, the reflected wave, also a shock wave, is curved as well (figure 11).

In figure 12, we give experimental results obtained by Haas and Sturtevant (the shadow-photographs) and our corresponding numerical results (the color-graphs), showing density distributions. The color-graphs of figures 12b and 12c show that the incoming and refracted shock are still connected, just as in the corresponding shadow-graphs. The incoming shock becomes curved as well. The refracted shock becomes so much curved that pressure waves arise at the locations of strong curvature (inside black contour line added to color-graph of figure 12c). Density and pressure strongly increase there (dark spots in

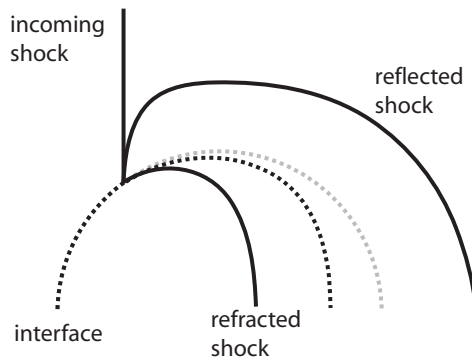
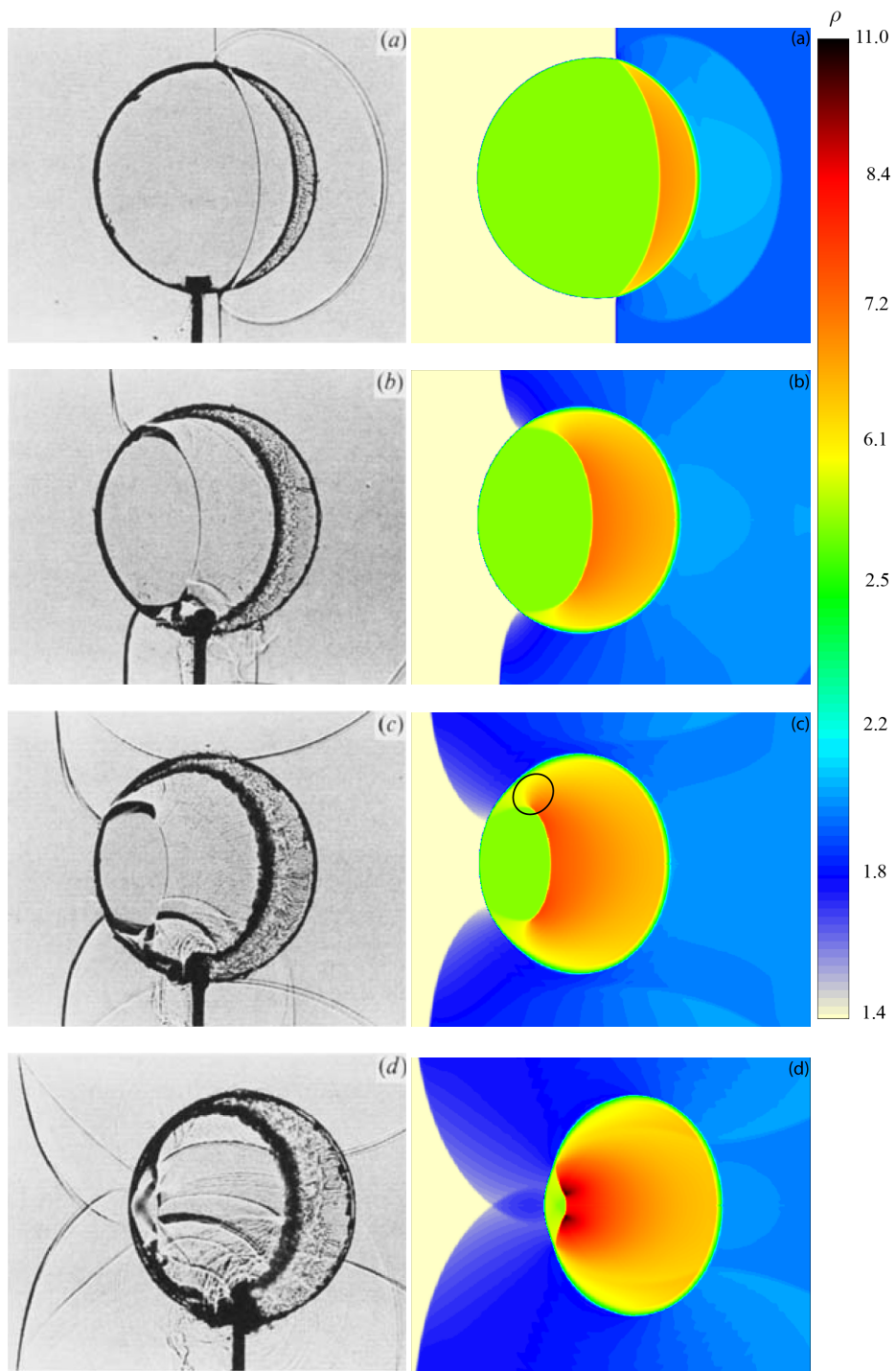


Fig. 11. Wave pattern for the R22 bubble.

color-graph of figure 12d). The refracted shock finally focuses, resulting in a density peak of more than three times the initial density inside the bubble and a pressure peak of four and a half times the initial pressure. Comparing the color-graphs of figures 12a and 12d, we clearly see that the bubble has been compressed and deformed. Also notice the modest numerical spreading of the two-fluid interface. The agreement between experimental and computational results (shadow-graphs and color-graphs, respectively) is very good. Note that the rather perfect circle which remains to be visible in the shadow-graph is the remainder, on the side wall of the wind tunnel, of the initial bubble's interface (a  $0.5 \mu\text{m}$  thick nitrocellulose membrane). At the left of the bubble, the two parts of the incoming shock, that were split at the right of the bubble, meet and cross without affecting each other. On their subsequent paths, they remain attached to the air-R22 interface. After having focused in the most left point of the bubble, the refracted shock expands radially as a transmitted shock (arrow in color-graph figure 12e). A high velocity created by the transmitted shock at its central point of origin, causes the interface to bulge out along the symmetry axis (figures 12e–g, in both the experimental and the computational results). As the transmitted shock travels along the interface, inward curling vortices are generated at the interface (color-graph in figure 12f, and very clearly in color-graph in figure 12g); a Richtmyer-Meshkov instability, vaguely visible in the experimental results.

Figure 13 shows the evolution of the computed pressure and volume-fraction distributions (left and right, respectively) at four instances of time. In the pressure distributions, the location of the two-fluid interface is invisible, as it should be. In the volume-fraction distributions, the white line indicates the initial location of the bubble. Initially, the interface is a single cell thick. When the incoming shock intersects the interface, the latter is smeared over a few cells. At the time of volume-fraction distribution 13b, the refracted shock has almost crossed the bubble. Note that the most left part of the bubble is still in its original position then. Also note the significant compression of the bubble. Going from volume-fraction distribution 13b to 13d, the bubble slightly expands. Volume-fraction plot 13c shows a locally thicker interface at the top (and bottom) of the bubble. This is caused by the incipient rolling-up of the interface. In volume-fraction figure 13d the interface vortices are clearly visible, and – likewise – the interface bulge along the symmetry axis.

Besides qualitative comparisons between experiment and computation, also quantita-



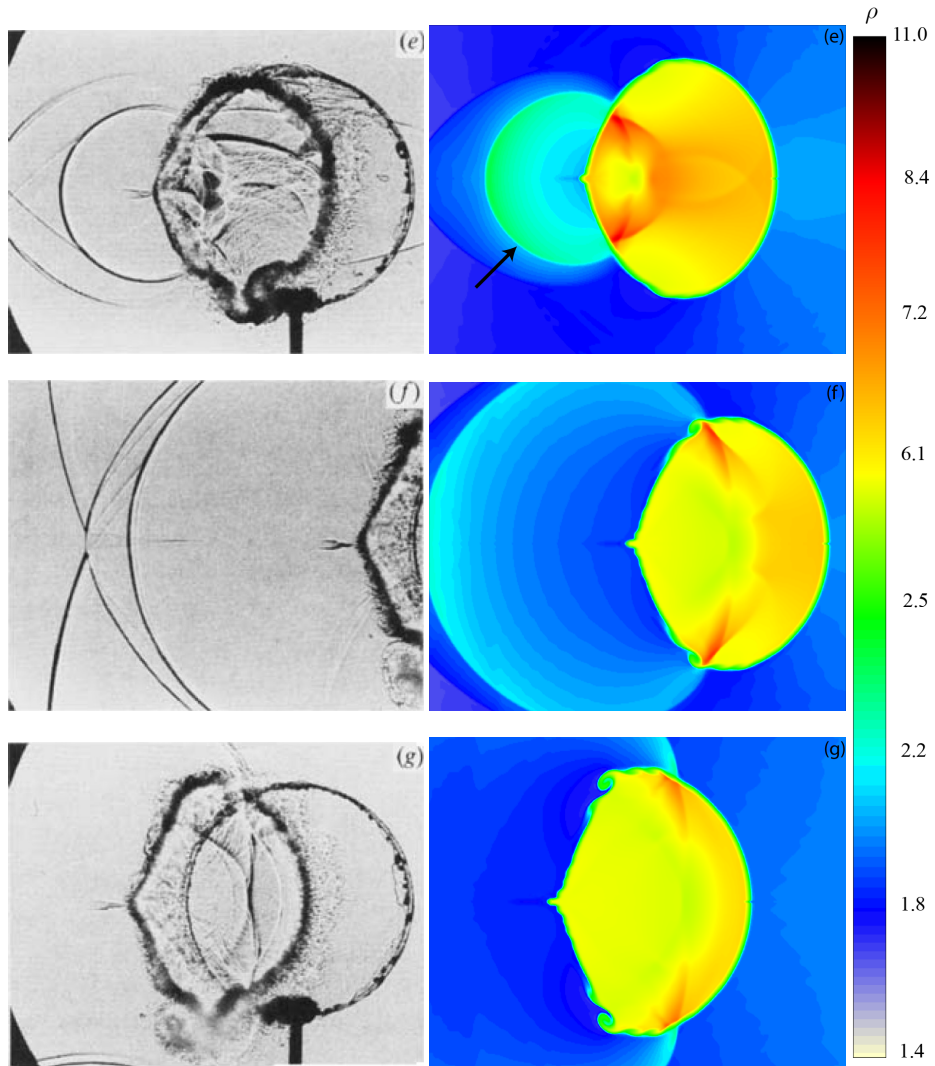


Fig. 12. Evolution of density distribution, R22 bubble, left: shadow-photographs of Haas and Sturtevant [9], right: current numerical results,  $t = 55 \mu s$  (a),  $115 \mu s$  (b),  $135 \mu s$  (c),  $187 \mu s$  (d),  $247 \mu s$  (e),  $318 \mu s$  (f) and  $342 \mu s$  (g).

tive comparisons can be made. In table 5, following [9], we give: (i) the speed of the incoming shock along the upper boundary of the computational domain,  $c_{is}$ , (ii) the speed of the refracted shock,  $c_{rs}$ , and (iii) the speed of the right side of the two-fluid interface,  $c_{ui}$ , the latter two both along the symmetry axis. Data are given for the three speeds found in the experiment, in the computations of Quirk and Karni [23], and in the present computations. Table 5 shows that the current physical model and numerical method perform quantitatively accurately as well.

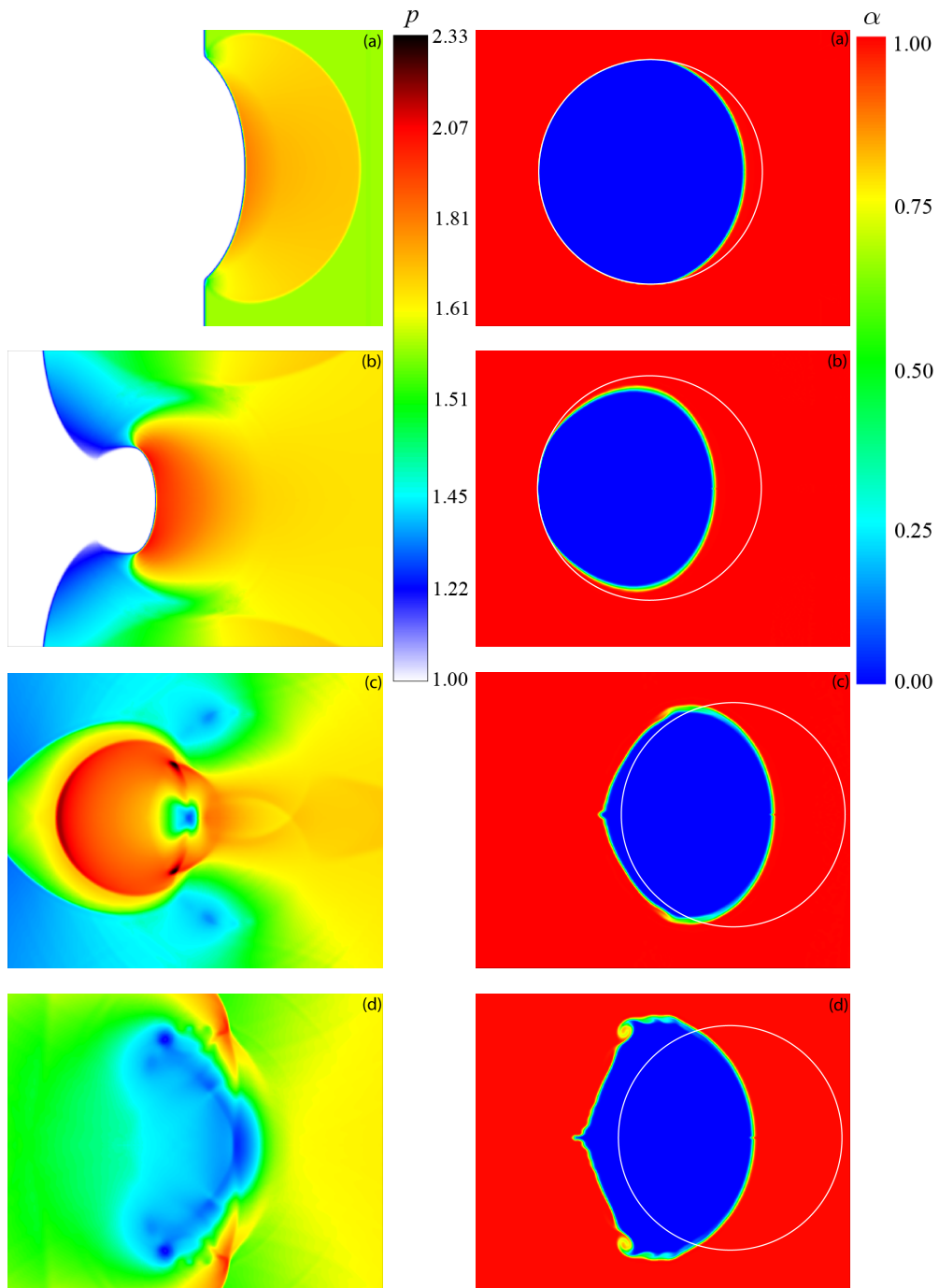


Fig. 13. Computed pressure (*left*) and volume-fraction (*right*) distributions, R22 bubble,  $t = 55 \mu\text{s}$  (a),  $135 \mu\text{s}$  (b),  $247 \mu\text{s}$  (c) and  $342 \mu\text{s}$  (d). The white circle in the volume-fraction distributions represents the initial bubble.

	$c_{is}$	$c_{rs}$	$c_{ui}$
Haas and Sturtevant [9]	415	240	73
Quirk and Karni [23]	420	254	70
Present results	419	241	75

Table 5

Speeds, in  $m/s$ , of incoming shock,  $c_{is}$ , refracted shock,  $c_{rs}$  and right side of interface,  $c_{ui}$ , as found in R22 bubble experiment and computations.

#### 4.2.2. Helium bubble

The second case contains a bubble filled with helium. Helium has a much lower density and a higher ratio of specific heats than air, resulting in a speed of sound higher than air. As a result, the refracted shock runs ahead of the incoming shock (figure 14). The reflected wave is an expansion wave.

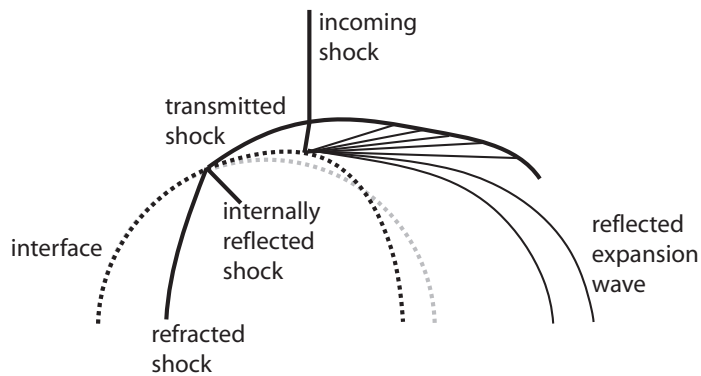
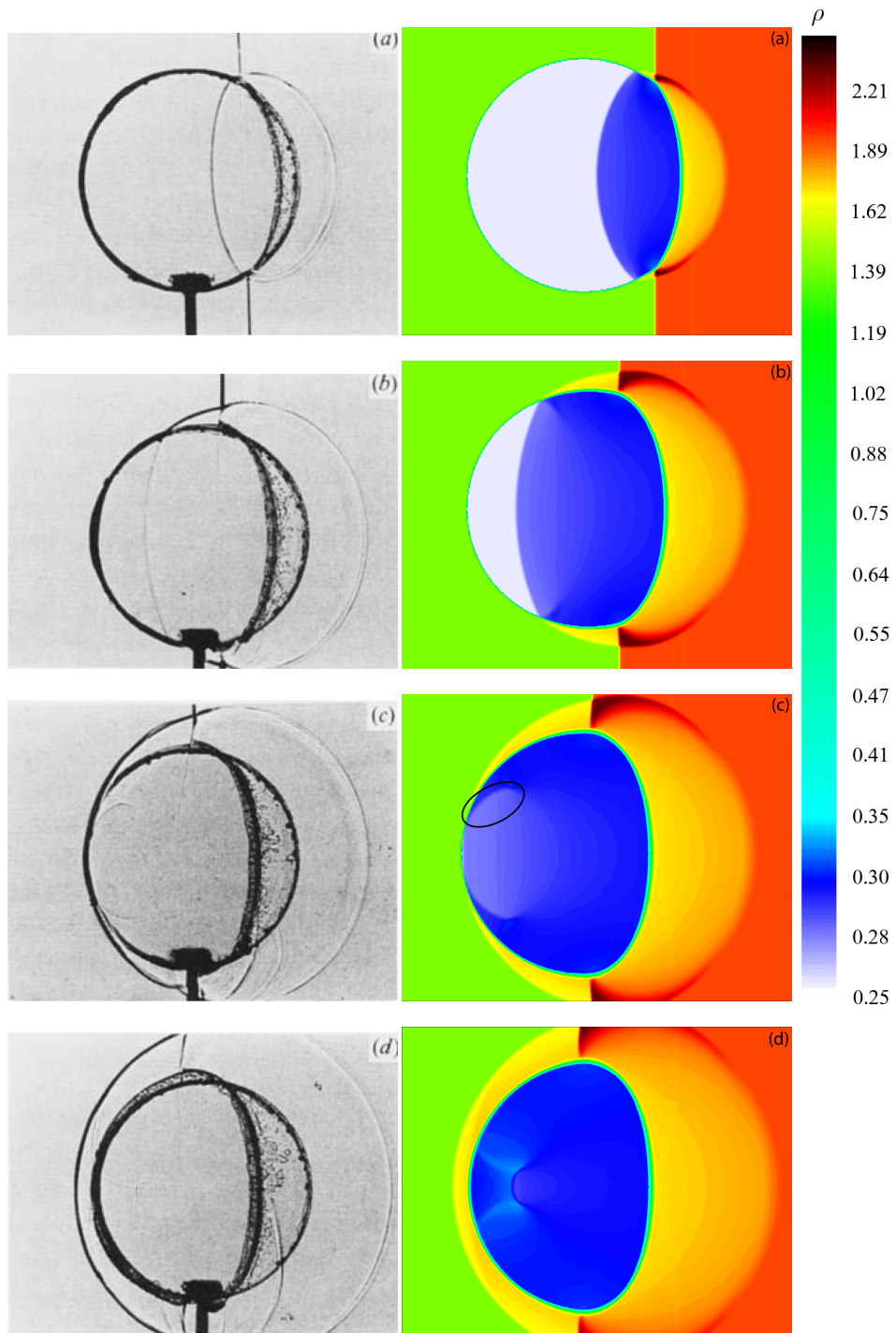


Fig. 14. Wave pattern for the helium bubble.

Depending on the incoming shock wave's strength and angle of incidence onto the interface, the refraction can be regular or irregular. Regular means that incoming wave, refracted wave and reflected wave meet at the same point on the interface. For the R22 bubble the refraction was regular. For the helium bubble the refraction appears to be irregular; the refracted wave intersects the interface ahead of the other waves. In the irregular case, a transmitted shock wave arises where the refracted wave hits the interface. Together with the incoming shock this transmitted shock forms a  $\lambda$ -shock (figures 14 and 15a-c). Due to the transmitted wave, the part of the incoming shock between the transmitted wave and the interface is deflected. Note the physical correctness of the computational results in this respect, by comparing color-graphs and shadow-graphs in figures 15b and 15c. At the right of the incoming shock the transmitted wave interacts with the reflected expansion wave, causing the transmitted wave to bend inwards (figure 14). In the triangular region at the right of the lower part of the incoming wave, and bounded by the transmitted wave and the expansion wave (figure 14), the density becomes very high (dark regions in color-graphs of figures 15a-c). Besides the transmitted shock, the refracted shock also causes an internally reflected shock (figure 14). The latter is also weakly visible in figures 15b and 15c. In the latter figure, the internally reflected shock has been encircled. The evolution of the internally reflected wave is complex, it has



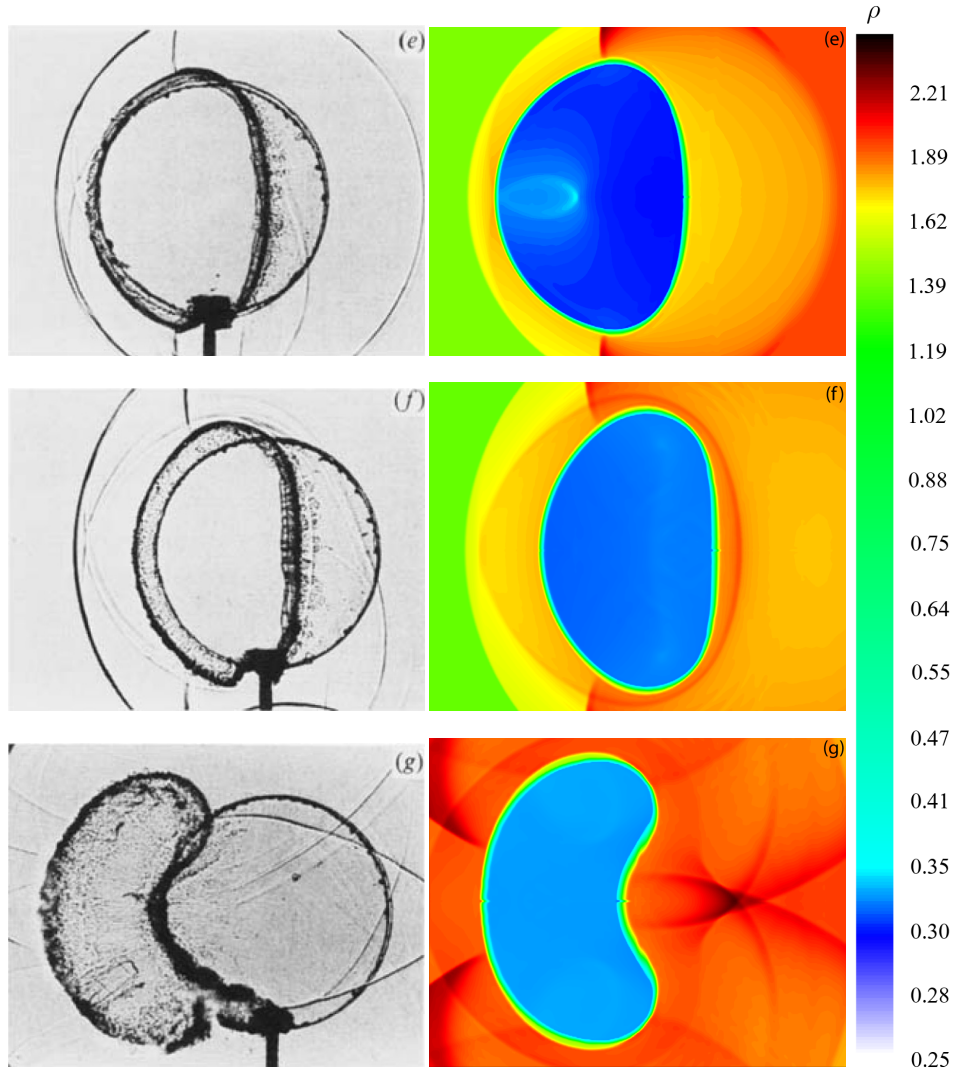


Fig. 15. Evolution of density distribution, helium bubble, left: shadow-photographs of Haas and Sturtevant [9], right: current numerical results, at  $t = 32 \mu s$  (a),  $52 \mu s$  (b),  $62 \mu s$  (c),  $72 \mu s$  (d),  $82 \mu s$  (e),  $102 \mu s$  (f) and  $245 \mu s$  (experiment) /  $230 \mu s$  (computation) (g).

been sketched in figure 16. The subnumbers b,c and d in figure 16 correspond with those in figure 15. The secondary transmitted shock wave, located between first transmitted shock and interface, and sketched in figure 16d, is weakly visible in the color-graph of figure 15d (jump from yellow to orange). When the first refracted shock leaves the bubble, it continues through the air as a (nearly) circular transmitted wave (figures 15d–f). The compression and deformation of the helium bubble are clearly visible from figures 15a–g. In the color-graph of figure 15e, the internally reflected waves have crossed each other and appear as a (light-blue) loop which expands towards the bubble interface. In figure



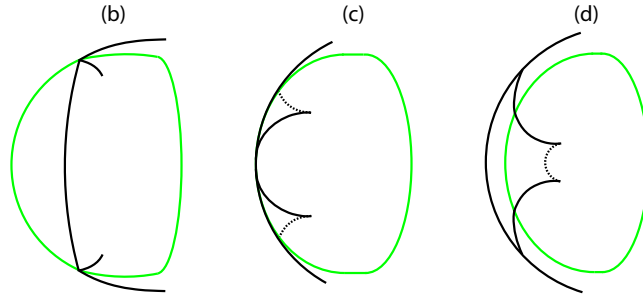


Fig. 16. Schematic drawing of the waves inside the helium bubble, to clarify the color-graphs in figures 15b–d. The lines in the plot represent the two-fluid interface “—”, relatively strong pressure waves “- - -” and relatively weak pressure waves “...”.

15f, now also visible in the shadow-graph, the internally reflected wave has completely crossed the interface and continues through the air as a shock wave, which completely encloses the bubble. The bubble starts to roll up (figure 15g). The rolling up is caused by a jet along the symmetry axis at the right side of the bubble. From figure 15c on, when the refracted shock reaches the most left bubble point, the bubble starts to move to the left. This movement is best visible from figures 15f and 15g. For this purpose, the remainders of the initial bubble, on top of the T-shaped support structure in the shadow-graphs, can be taken as a reference.

For the helium-bubble case, pressure and volume-fraction distributions at the same instances of time are given in figure 17, pressure in the left graphs, volume fraction in the right graphs. In the aforementioned triangular structure at the right of the incoming shock’s lower part, the pressure is much higher than in the surrounding air and in the helium bubble. The evolution of the helium bubble’s shape is perfectly shown by the volume fraction plots. The white line indicates again the initial bubble.

Finally, also for the helium bubble case some quantitative comparisons can be made of wave speeds. The same speeds are considered as for the R22 bubble. Our computed speeds show a good similarity with the other speeds, especially with those of Quirk and Karni (table 6).

	$c_{is}$	$c_{rs}$	$c_{ui}$
Haas and Sturtevant [9]	410	900	170
Quirk and Karni [23]	422	943	178
Present results	419	956	176

Table 6

Speeds, in  $m/s$ , of incoming shock,  $c_{is}$ , refracted shock,  $c_{rs}$  and right side of interface,  $c_{ui}$ , as found in helium bubble experiment and computations.

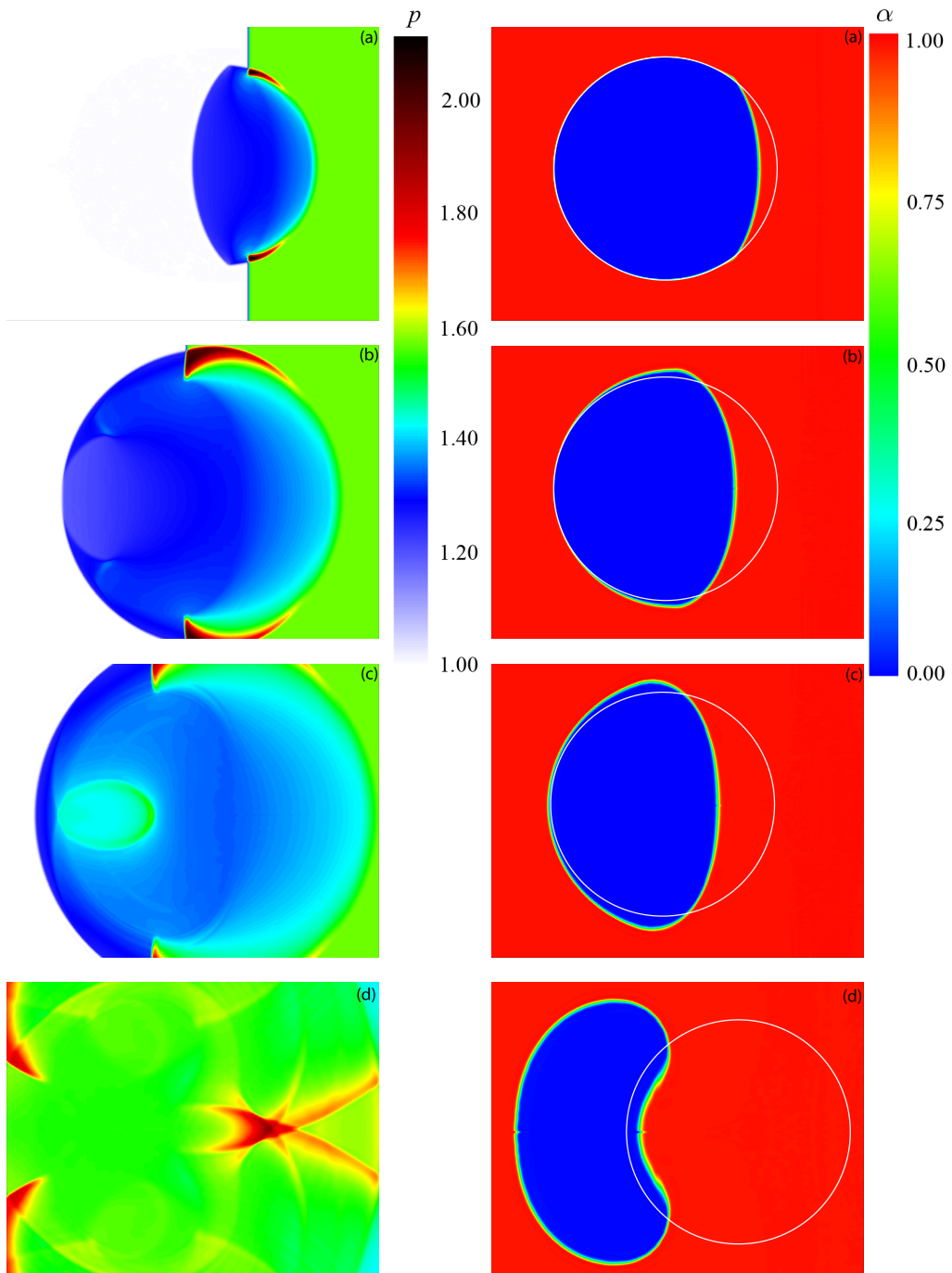


Fig. 17. Computed pressure (*left*) and volume-fraction (*right*) distributions, helium bubble,  $t = 32 \mu s$  (a),  $62 \mu s$  (b),  $82 \mu s$  (c) and  $230 \mu s$  (d). The white circle in the volume-fraction distributions represents the initial bubble.

## 5. Conclusions

In this paper, a model for compressible, immiscible two-fluid Euler flow has been derived: a five-equation model that assumes pressure and velocity equilibrium across the two-fluid interface. The model differs from Kapila's known five-equation model [13] in that it is based on physical laws only: four conservation laws and a conservation-law-like exchange law. No equation is introduced to describe the topology of the two-fluid interface. The current two-fluid flow model does not explicitly consider the two-fluid interface. It assumes that the flow is a mixture of the two fluids. For the energy-exchange law, two energy-exchange terms have been derived in the paper: a mechanical work term and a thermodynamic work term. The derivation of both has been rigorously done for smooth flow. Clear physical interpretations can be made of both terms. Formally, the energy-exchange terms also need to be derived for discontinuities, i.e., jump conditions also need to be derived for both terms. An advantage though of the numerical method devised for the evaluation of the exchange terms is that it does *not* need jump conditions.

Given the four conservation laws and the conservation-law-like character of the energy-exchange equation, a finite-volume method as spatial discretization is very natural. To evaluate the fluxes of mass and energy (both of the bulk fluid and of one of the two separate fluids), and the flux of momentum (of the bulk fluid only), an approximate Riemann solver of Osher-type has been constructed. Already for two perfect gases, no explicit expressions can be found for the Riemann invariants needed in the Riemann solver. The ordinary differential equations that implicitly define the Riemann invariants can be easily numerically integrated though. The approximate Riemann solver presented perfectly suits and serves the neat physical two-fluid model that we have proposed here. Left and right cell-face states for the Riemann solver are constructed by a limited, higher-order accurate interpolation. Formally, in 1D, this MUSCL approach is third-order accurate.

The Riemann solver is also used for the evaluation of the energy-exchange terms. In a finite-volume setting, the energy-exchange terms, which contain first-order spatial derivatives, need to be integrated over the cells, including the cell faces. At the cell faces, the energy-exchange terms are not Riemann integrable. This difficulty is circumvented by integrating the exchange terms in solution space instead of in physical space. For this, very practical use is made of the approximate Riemann solver. (Also in future two-fluid Navier-Stokes flow computations, the current integration in solution space is assumed to perform well.)

For the time integration, in consistency with the limited, in 1D third-order accurate space discretization, a third-order accurate TVD time discretization is used; an existing, explicit three-stage Runge-Kutta scheme.

The 1D and 2D numerical results presented, show that the method performs well. The efforts put into deriving a physically sound model and likewise sound discretization method pay off. Physically correct solutions are obtained without any tuning or post-processing. The method is robust and accurate. Particularly for the 2D test cases, the shock-bubble-interaction problems, it appears that the physical model and numerical method accurately resolve detailed flow features. The main flow feature, the two-fluid interface, appears to be resolved in accurate position and even rather sharply, despite the use of a mixture model, a model without any explicit description of the two-fluid flow topology. Pressure oscillations near the two-fluid interface do not occur, without

any precaution or post-processing.

## References

- [1] R. Abgrall. How to prevent pressure oscillations in multicomponent flow calculations: A quasi conservative approach. *Journal of Computational Physics*, 125:150–160, 1996. [3]
- [2] R. Abgrall and S. Karni. Computations of compressible multifluids. *Journal of Computational Physics*, 169:594–623, 2001. [3]
- [3] R. Abgrall and V. Perrier. Asymptotic expansion of a multiscale numerical scheme for compressible multiphase flow. *SIAM Journal on Multiscale Modeling and Simulation*, 5:84–115, 2006. [2]
- [4] G. Allaire, S. Clerc, and S. Kokh. A five-equation model for the simulation of interfaces between compressible fluids. *Journal of Computational Physics*, 181:577–616, 2002. [2, 3]
- [5] M.R. Baer and J.W. Nunziato. A two-phase mixture theory for the deflagration-to-detonation transition (DDT) in reactive granular materials. *International Journal of Multiphase Flow*, 12:861–889, 1986. [2, 11]
- [6] S. Clerc. Numerical simulation of the homogeneous equilibrium model for two-phase flows. *Journal of Computational Physics*, 161:354–375, 2000. [2]
- [7] R.P. Fedkiw, T. Aslam, B. Merriman, and S. Osher. A non-oscillatory Eulerian approach to interfaces in multimaterial flows (the ghost fluid method). *Journal of Computational Physics*, 152:457–492, 1999. [3]
- [8] H. Guillard and M. Labois. *Numerical modeling of compressible two-phase flows*. ECCOMAS CFD. 2006. P. Wesseling and E. Oñate and J. Périaux (eds.). <http://proceedings.fyper.com/eccomascfd2006/>. [2, 3]
- [9] J.F. Haas and B. Sturtevant. Interaction of weak shock waves with cylindrical and spherical gas inhomogeneities. *Journal of Fluid Mechanics*, 181:41–76, 1987. [17, 20, 24, 26, 28, 29]
- [10] P.W. Hemker and S.P. Spekreijse. Multiple grid and Osher’s scheme for the efficient solution of the steady Euler equations. *Applied Numerical Mathematics*, 2:475–493, 1986. [11, 12]
- [11] W. Hundsdorfer, B. Koren, M. van Loon, and J.G. Verwer. A positive finite-difference advection scheme. *Journal of Computational Physics*, 117:35–46, 1995. [13]
- [12] P. Jenny, B. Müller, and H. Thomann. Correction of conservative Euler solvers for gas mixtures. *Journal of Computational Physics*, 132:91–107, 1997. [3]
- [13] A.K. Kapila, R. Menikoff, J.B. Dzil, S.F. Son, and D.S. Stewart. Two-phase modeling of deflagration-to-detonation transition in granular materials: Reduced equations. *Physics of Fluids*, 13:3002–3024, 2001. [2, 3, 31]
- [14] S. Karni. Multicomponent flow calculations by a consistent primitive algorithm. *Journal of Computational Physics*, 112:31–43, 1994. [3]
- [15] B. Koren. *A robust upwind discretization method for advection, diffusion and source terms*, volume 45 of *Notes on Numerical Fluid Mechanics*, pages 117–138. Vieweg, 1993. C.B. Vreugdenhil and B. Koren (eds.). [11]
- [16] B. Koren, M.R. Lewis, E.H. van Brummelen, and B. van Leer. Riemann-problem

- and level-set approaches for homentropic two-fluid flow computations. *Journal of Computational Physics*, 181:654–674, 2002. [3]
- [17] J. Massoni, R. Saurel, B. Nkonga, and R. Abgrall. Propositions de méthodes et modèles Eulériens pour les problèmes à interfaces entre fluides compressibles en présence de transfert de chaleur. *International Journal of Heat and Mass Transfer*, 45:1287–1307, 2002. [2]
- [18] W.A. Mulder, S. Osher, and J.A. Sethian. Computing interface motion in compressible gas dynamics. *Journal of Computational Physics*, 100:209–228, 1992. [4]
- [19] A. Murrone and H. Guillard. A five equation reduced model for compressible two phase flow problems. *Journal of Computational Physics*, 202:664–698, 2005. [2, 3]
- [20] S. Osher and R.P. Fedkiw. *Level Set Methods and Dynamic Implicit Surfaces*. Springer, 2003. [4]
- [21] S. Osher and F. Solomon. Upwind difference schemes for hyperbolic systems of conservation laws. *Mathematics of Computation*, 38:339–374, 1982. [11]
- [22] F. Petitpas, E. Franquet, R. Saurel, and O. Le Metayer. A relaxation-projection method for compressible flows. Part II: Artificial heat exchanges for multiphase shocks. *Journal of Computational Physics*, 225:2214–2248, 2007. [2]
- [23] J.J. Quirk and S. Karni. On the dynamics of a shock-bubble interaction. *Journal of Fluid Mechanics*, 318:129–163, 1996. [24, 26, 29]
- [24] E. Romenski, A.D. Resnyansky, and E.F. Toro. Conservative hyperbolic formulation for compressible two-phase flow with different phase pressures and temperatures. *Quarterly of Applied Mathematics*, 65:259–279, 2007. [2]
- [25] R. Saurel and R. Abgrall. A multiphase Godunov method for compressible multifluid and multiphase flows. *Journal of Computational Physics*, 150:425–467, 1999. [2, 3]
- [26] R. Saurel and R. Abgrall. A simple method for compressible multifluid flows. *SIAM Journal on Scientific Computing*, 21:1115–1145, 1999. [3]
- [27] R. Saurel, E. Franquet, E. Daniel, and O. Le Metayer. A relaxation-projection method for compressible flows. Part I: The numerical equation of state for the Euler equations. *Journal of Computational Physics*, 223:822–845, 2007. [2]
- [28] R. Saurel, F. Petitpas, and R.A. Berry. Simple and efficient relaxation methods for interfaces separating compressible fluids, cavitating flows and shocks in multiphase mixtures. *Journal of Computational Physics*, 228:1678–1712, 2009. [2]
- [29] J.A. Sethian. *Level Set Methods and Fast Marching Methods: Evolving Interfaces in Computational Geometry, Fluid Mechanics, Computer Vision and Materials Science*. Cambridge University Press, 1999. [4]
- [30] H.B. Stewart and B. Wendroff. Two-phase flow: models and methods. *Journal of Computational Physics*, 56:363–409, 1984. [2]
- [31] P.K. Sweby. High resolution schemes using flux limiters for hyperbolic conservation laws. *SIAM Journal on Numerical Analysis*, 21:995–1011, 1984. [11]
- [32] E.H. van Brummelen and B. Koren. A pressure-invariant conservative Godunov-type method for barotropic two-fluid flows. *Journal of Computational Physics*, 185:289–308, 2003. [2]
- [33] B. van Leer. *Upwind-difference methods for aerodynamic problems governed by the Euler equations*, volume 22 of *Lectures in Applied Mathematics*, pages 327–336. American Mathematical Society, 1985. B.E Engquist and S. Osher and R.C.J. Somerville (eds.). [11]
- [34] J. Wackers. *Surface Capturing and Multigrid for Steady Free-Surface*

*Water Waves*. PhD thesis, Delft University of Technology, 2007.  
<http://www.library.tudelft.nl/ws/search/publications/dissertations/>.

[10]

- [35] N.P. Waterson and H. Deconinck. Design principles for bounded higher-order convection schemes – a unified approach. *Journal of Computational Physics*, 224:182–207, 2007. [11]