



Centrum voor Wiskunde en Informatica

REPORTRAPPORT

MAS

Modelling, Analysis and Simulation



Modelling, Analysis and Simulation

Circuit dependence of the diameter of pulsed positive streamers in air

T.M.P. Briels, J. Kos, E.M. van Veldhuizen, U. Ebert

REPORT MAS-E0623 OCTOBER 2006

Centrum voor Wiskunde en Informatica (CWI) is the national research institute for Mathematics and Computer Science. It is sponsored by the Netherlands Organisation for Scientific Research (NWO). CWI is a founding member of ERCIM, the European Research Consortium for Informatics and Mathematics.

CWI's research has a theme-oriented structure and is grouped into four clusters. Listed below are the names of the clusters and in parentheses their acronyms.

Probability, Networks and Algorithms (PNA)

Software Engineering (SEN)

Modelling, Analysis and Simulation (MAS)

Information Systems (INS)

Copyright © 2006, Stichting Centrum voor Wiskunde en Informatica
P.O. Box 94079, 1090 GB Amsterdam (NL)
Kruislaan 413, 1098 SJ Amsterdam (NL)
Telephone +31 20 592 9333
Telefax +31 20 592 4199

ISSN 1386-3703

Circuit dependence of the diameter of pulsed positive streamers in air

ABSTRACT

Diameter and branching structure of positive streamers in ambient air are investigated with a fast iCCD-camera. We use different pulsed power circuits and find that they generate different spatial streamer structures. The electrodes have a point-plane geometry and a distance of 40 or 80 mm, and the peak voltages over the discharge gap are up to 60 kV. Depending on circuit and peak voltage, we observe streamers with diameters varying gradually between 0.2 and 2.5 mm. The streamer velocity increases with the diameter, ranging from 0.07 to 1.5 mm/ns, while the current density within the streamers stays almost constant. The thicker streamers extend much further before they branch than the thinner ones. The pulsed power supplies are a switched capacitor supply with an internal resistance of 1 k Ω and a transmission line transformer supply with an impedance of 200 Ω ; additional resistors change the impedance as well as the voltage rise time in the case of the capacitor supply. We observe that short rise times and low impedance create thick streamers close to the pointed electrode, while a longer rise time as well as a higher impedance create thinner streamers at the same peak voltage over the discharge.

2000 Mathematics Subject Classification: 78M99, 94C99

Keywords and Phrases: streamer discharges, experiments, electric circuits

Note: This work is financially supported by STW under contract number CMM 6501 and by NWO under contract number 047.016.017.

Circuit dependence of the diameter of pulsed positive streamers in air

T M P Briels¹, J Kos¹, E M van Veldhuizen¹ and U Ebert^{1,2}

¹ Department of Applied Physics, Technische Universiteit Eindhoven, P O Box 513, 5600MB Eindhoven, The Netherlands,

² Centrum voor Wiskunde en Informatica (CWI), P O Box 94079, 1090GB Amsterdam, The Netherlands

E-mail: e.m.v.veldhuizen@tue.nl

Abstract. Diameter and branching structure of positive streamers in ambient air are investigated with a fast iCCD-camera. We use different pulsed power circuits and find that they generate different spatial streamer structures. The electrodes have a point-plane geometry and a distance of 40 or 80 mm, and the peak voltages over the discharge gap are up to 60 kV. Depending on circuit and peak voltage, we observe streamers with diameters varying gradually between 0.2 and 2.5 mm. The streamer velocity increases with the diameter, ranging from 0.07 to 1.5 mm/ns, while the current density within the streamers stays almost constant. The thicker streamers extend much further before they branch than the thinner ones. The pulsed power supplies are a switched capacitor supply with an internal resistance of 1 k Ω and a transmission line transformer supply with an impedance of 200 Ω ; additional resistors change the impedance as well as the voltage rise time in the case of the capacitor supply. We observe that short rise times and low impedance create thick streamers close to the pointed electrode, while a longer rise time as well as a higher impedance create thinner streamers at the same peak voltage over the discharge.

PACS numbers: 52.80.-s, 92.60.Pw, 82.40.Ck

Submitted to: *J. Phys. D: Appl. Phys.*

1. Introduction

Electric breakdown in gases over large distances occurs in several stages. The first stage is the build up of an avalanche. Then when space charge starts to influence the applied field, the streamer discharge creates a weakly ionized channel. At very high fields this streamer branches. As realized already more than half a century ago [1, 2], streamers are difficult to visualize and to describe, due to their rapidity as well as due to their internal multiscale nature [3]. The aim of the present paper is in particular to clarify the experimental findings on different streamer patterns, diameters and velocities, and their relation to the external electric circuit.

A variety of streamer diameters under different experimental conditions has been reported. Photographic observations were made forty years ago by Waters and Jones for a voltage of 270 kV over a 2 m gap. They show a streamer with a diameter near the anode of roughly up to 20 mm, decreasing further on in the gap to ~ 2 mm [4]. On such photographs, however, one easily overestimates the size because the center of the channel can be overexposed. The experimental conditions of [4] are far from the small gaps that are studied nowadays for pulsed corona applications [5]. On the other hand, the photos in [4] show that a pulse with a relatively long voltage rise time of the order of 1 μ s can create thick and thin streamer channels and pronounced branching.

Corona streamers created by pulsed positive voltages have been studied mainly in small gaps. Diameters reported in the literature are e.g. 40 μ m in pure oxygen at 0.5 bar in a gap of 1 cm and a voltage of about 11 kV [6]. Values obtained for streamers in air are e.g. 0.2 mm in a wire-plane gap of 35 mm at 30 kV [7] and 0.5 mm in a point-plane gap of 20 mm at 25 kV [8]. In larger gaps limited information is available. Ref. [9] reports diameters of 10 mm in a wire-cylinder discharge of 290 mm diameter using a voltage pulse of 140 kV. The recent publication [10] shows a very abrupt change from 4 mm to ≤ 0.5 mm in a wire-plane discharge of 35 mm with a short voltage pulse with a maximum of 45 kV; the thin streamers probably occurred after the voltage had collapsed. We will show below that errors in diameter measurements can occur not only due to photographic overexposure, but also due to insufficient resolution of CCD-cameras. On the other hand, they will not explain diameters varying by two to three orders of magnitude at normal pressure.

High altitude discharge phenomena also show interesting effects. They have become a subject of study since their discovery in 1989, see e.g. [11, 12]. These transient luminous events are referred to as sprites, elves, blue jets etc. Sprites, in particular, are thought to be a type of streamer discharges and their larger diameter of up to 100 m [13] corresponds to the much lower air density at high altitudes. This scaling with air density follows from simple streamer models taking only impact ionization into account [3] and relates experiments at low or high pressure to each other, the results are somewhat modified by photoionization [14, 15, 16].

The question of the streamer diameter also has played a classical role in streamer theory. Dawson and Winn [17] were the first to perform so-called 1.5D dynamical

streamer computations that used a constant value for this diameter. A value of $60\ \mu\text{m}$ was thought to be an optimal value at the time. Later a fixed streamer diameter was predicted by minimization arguments by D'yakonov and Kachorovskii [18] and Simakov and Raizer [19], for a discussion see [3]. In 2D computations the diameter is not an input, but a result of the computation. Recent computations in gaps longer than 5 mm [15, 16, 20, 21, 22, 23, 24] show that the diameter of both positive and negative single streamers can depend on the applied voltage. Streamer diameters up to 16 mm are reported in [21] in a point-plane gap.

Simulations in a homogeneous field show that streamers can expand in overvolted gaps [15, 16, 20, 23, 24, 25, 26]. Calculations and measurements are still difficult to compare as they use different voltage pulse parameters and initial and boundary conditions. A recent attempt to compare measurements and calculations for single positive streamers in air shows that this is still not a straightforward task [8].

In the present paper, our goal is to set a basis for such a comparison by performing well defined experiments that determine how experimental streamer properties and, in particular, the optical diameter depend on applied voltage and gap length. We investigate positive streamers in a point-plane geometry in ambient air. The experiments are performed in the same experimental setup, but with different power supplies. We find that the applied voltage is a key parameter but that the internal resistance and the rise time of the power supply have a distinct influence as well.

The paper is organized as follows: in chapter 2, the experimental setup and diagnostics are described. Chapter 3 contains the experimental results and chapter 4 further discussion and conclusion.

2. Experimental setup and diagnostics

2.1. The two pulsed power supplies used

Two different power supplies are used to generate pulsed positive streamers. In both supplies first a capacitor is charged and then a switch is closed. However, the consecutive discharging of this capacitor over the needle-plate gap differs.

The first power supply (called C-supply) is sketched in figure 1, it is similar to the supply used previously [27]. The capacitor C (250 pF) is charged negatively through the resistor R_1 (25 M Ω). Closing the homemade, triggered spark gap puts the potential on the needle-plate electrode gap, with the negative polarity applied to the plate. In this way a positive corona is emitted from the needle. The resistor R_2 can be used to limit the current through the gap and the switch, its value is either 0 or 1 k Ω . Resistor R_3 determines the duration of the voltage pulse and is 4 k Ω in a 40 mm gap and 25 M Ω in a 80 mm gap. A resistive-capacitive divider (Tektronix P6015) is used to measure the voltage at the anode. The voltage rise time depends also on the series resistor R_2 . The current through the corona gap is obtained from the voltage across a series resistor R_4 between cathode and ground. The value of R_4 is 2.75 Ω . The outer ring across the

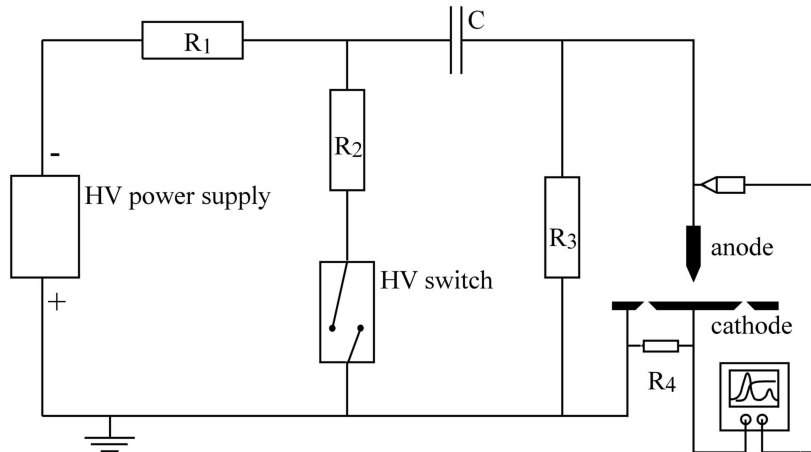


Figure 1. The electric circuit to be called 'C-supply' in this paper.

cathode ensures a well defined, low stray capacity and therefore a fast rise time of the current measurement [28]. All signals are digitized using 0.2 ns sampling time (LeCroy Waverunner 6100A). The energy is determined as the time integral over voltage times current, after the capacitive part of the total current is subtracted [27]. Noise is filtered out of the signals before integration [28].

Figure 2a-c shows the measured voltage, current and energy of the discharge when the DC voltage is set to $V_{DC} = 60$ kV. The resistors R_2 and R_3 here are 1 k Ω and 4 k Ω . This leads to a rise time of the voltage pulse of ~ 60 ns, while when using $R_2 = 0$ k Ω the rise time becomes ~ 30 ns as is discussed in more detail in section 4.1. The decay of the voltage is controlled by resistor R_3 . In the 40 mm gap a rather low value of 4 k Ω is chosen to limit the time during which the voltage is at its maximum. This prevents the transition of the corona discharge into a spark. It also means that the voltage V_{DC} applied on the capacitor is not reached on the gap since the capacitor rapidly starts to discharge through resistor R_3 . With the DC voltage set to 60 kV, the maximum or peak V_P of the voltage pulse on the discharge gap is here 42 kV; in general, it will depend on the value of R_3 and the discharge current. The measured current consists of a capacitive part and a discharge part. The geometric capacity of the current measurement system is determined to be 350 fF at 3 kV. At 42 kV this capacitive part has a negligible influence on the energy content of the corona pulse which is ~ 6 mJ for the case of figure 2.

We estimate that roughly 50% of this energy is used for the primary streamer propagation. This estimate is based on the assumption that the maximum current is achieved when the primary streamers reach the cathode. Figure 2 shows that at this point the energy is halfway, i.e. 3 mJ of the total 6 mJ. This fraction, however, very strongly depends on the pulse duration and the gas composition. It is beyond the scope of the present paper to treat this subject in detail. The other half of the energy is consumed after the streamers reach the cathode, in the so-called secondary streamer.

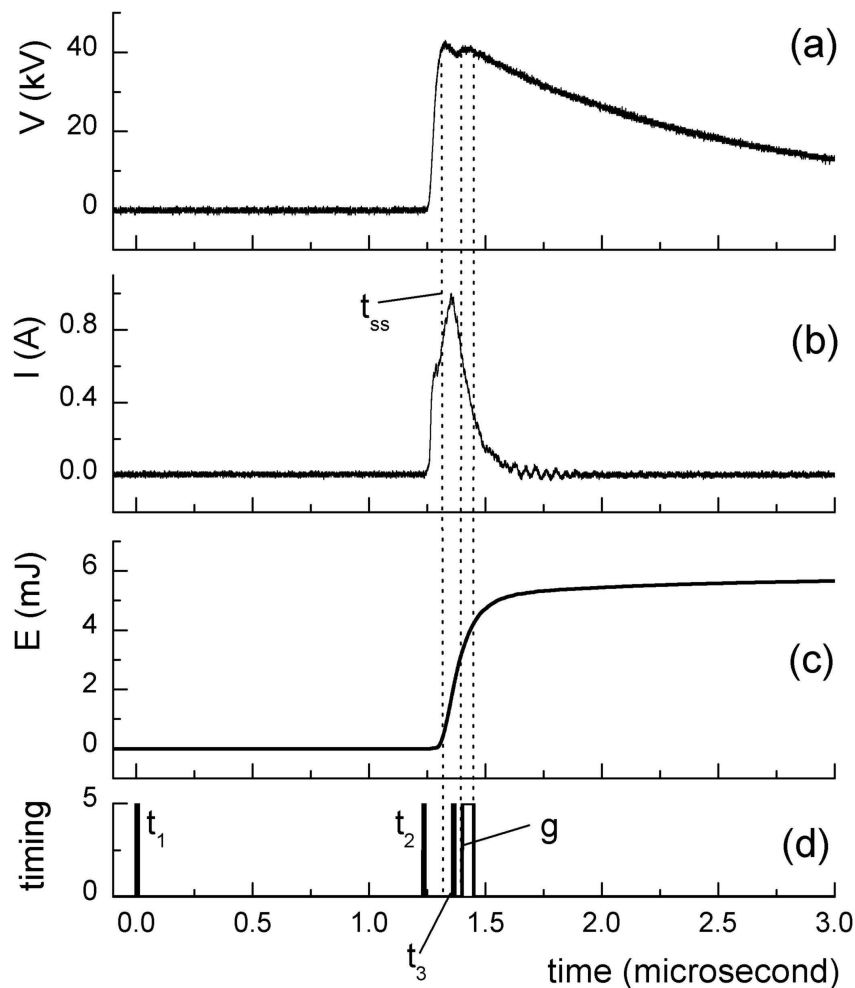


Figure 2. Evolution of voltage (a), current (b) and energy in the corona gap (c) obtained with the C-supply and a charging voltage of $V_{DC} = 60$ kV, $R_2 = 1$ k Ω and $R_3 = 4$ k Ω . The peak current and voltage on the 40 mm gap are $I_P = 1$ A and $V_P = 42$ kV. A total time interval of $3 \mu\text{s}$ is shown. The voltage rise time is ~ 60 ns and the decay time is $5 \mu\text{s}$. In (d) the timing of the measurement is indicated as described in the text: t_1 is the initial starting pulse for the trigger unit of the complete experiment, t_2 is the actual trigger for the high voltage pulse, t_3 is the trigger for the camera with an adjustable delay, t_{ss} is the moment at which the streamers start — this time can jitter considerably —, and g is the actual opening gate of the CCD-camera, here it is 50 ns.

In the figure, the corona current reaches its maximum I_P at time $t = 1.4 \mu\text{s}$. At that moment, a small dip can be seen in the voltage. This voltage drop of about 2 kV is in agreement with the voltage drop across R_2 and an internal resistance in the supply at the measured current of 1 A. The peak current I_P is an almost pure particle current, as the displacement current is negligible near the maximum of the voltage.

Figure 2d shows the timing diagram for the control of the CCD camera. At t_1 , a function generator creates the starting pulse. This pulse is mostly a single shot, manual

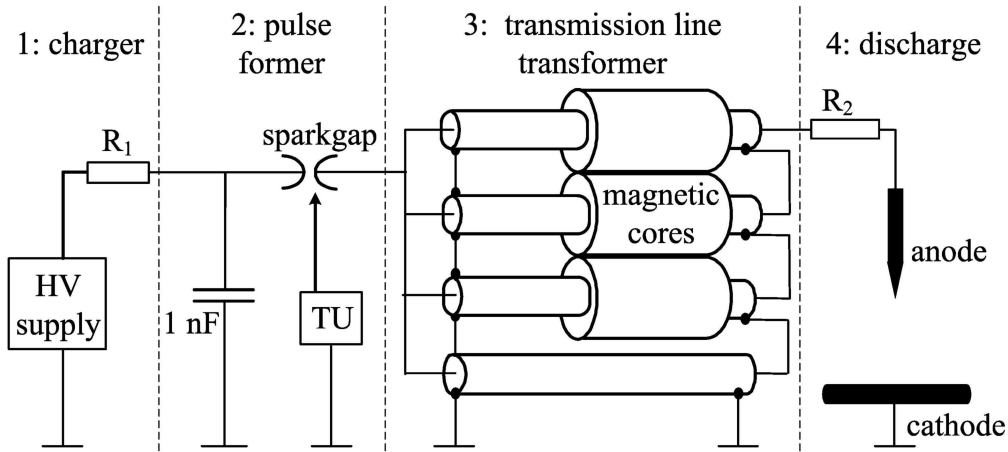


Figure 3. The electric circuit to be called 'TLT-supply' in this paper. Parts 1–4 are explained in the text. TU: trigger unit.

pulse but it can also be one from a steady pulse train. The pulse goes to the trigger unit of the spark gap. The trigger circuit creates an optical signal which enters through a fiber into the shielded high voltage box where it is converted and amplified to an 8 kV pulse. The total delay of the trigger unit t_2 has a fixed value of $1.2 \mu\text{s}$. The spark gap follows 10-20 ns after this 8 kV pulse and then the high voltage pulse starts. The start of corona streamers is at t_{ss} , the value of $t_{ss} - t_2$ strongly depends on the voltage level and rise time. In figure 2 it is about 50 ns, but it can be much longer if the peak voltage is only just above inception. In that case the jitter of $t_{ss} - t_2$ can be up to several microseconds. The signal t_1 has simultaneously been sent to a delay generator that gives a pulse to the CCD-camera at t_3 . The camera opens its gate 35 ns after t_3 with an adjustable duration or "gate" g . In the figure the value of g is set to 50 ns, the camera allows settings from 2 ns to "infinite". With low discharge jitter, t_3 and g can be chosen in such a way that the streamers cross only a part of the gap during the gate time of the camera, an example of such a snapshot is shown in figure 6a. If the jitter is high, it is unlikely that the camera observes the streamers with a short gate time g . In that case photos are taken mostly with very long gate times, as in figure 6d.

The second power supply (called TLT-supply) is shown in figure 3. Here again a capacitor (1000 pF) is charged (part 1 of the figure), but in this case to a positive polarity. It discharges when the spark gap is closed (part 2) via a Transmission Line Transformer (part 3) over the electrode gap (part 4 of the figure). This supply in principle transforms the voltage up by a factor of 4. Note that this supply is not inverting because the positions of capacitor and spark gap are exchanged in comparison to figure 1. The TLT provides 12.5Ω load impedance to the pulse former, but 200Ω to the discharge [29]. Therefore it is able to create high current pulses with better matching than a C-supply. Voltage and current are measured here with a Tektronix

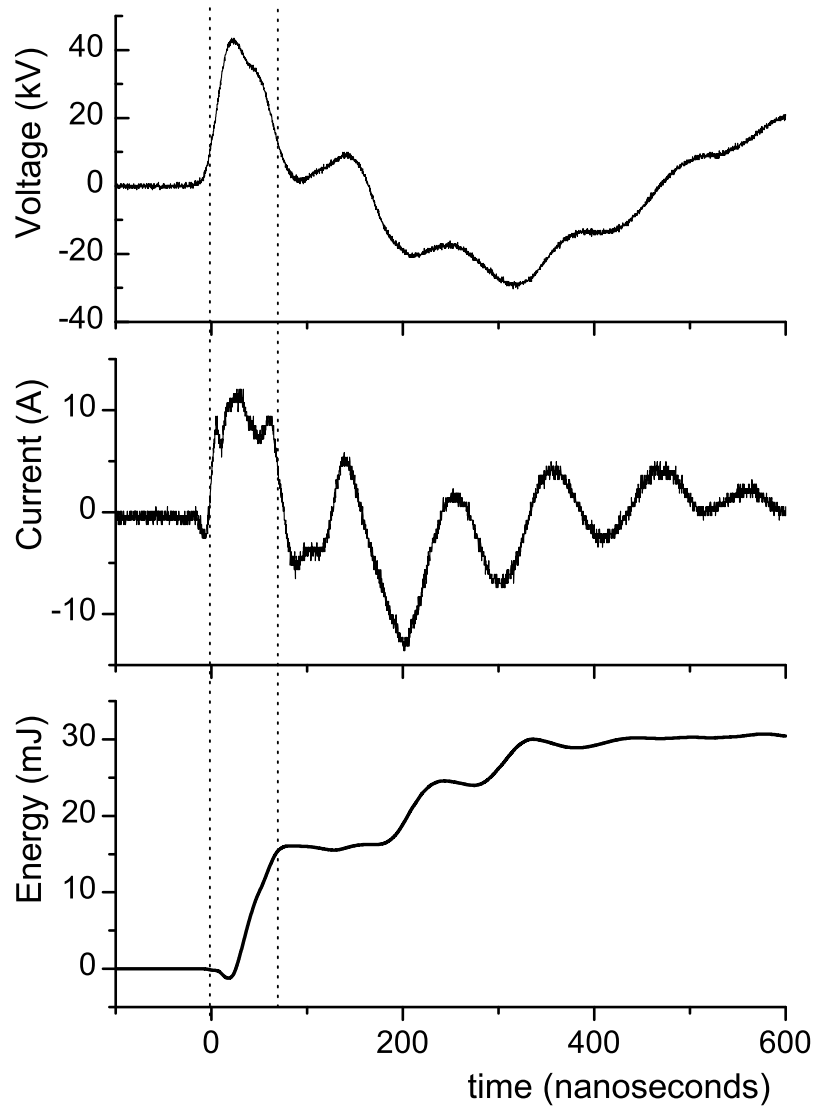


Figure 4. Evolution of voltage, current and energy on the TLT-supply with a charging voltage of 14 kV in an 80 mm gap with $R_2=1\text{ k}\Omega$. The peak current and voltage are $I_P = 12\text{ A}$ and $V_P = 40\text{ kV}$. The voltage rise time is $\sim 24\text{ ns}$, the corona pulse duration is $\sim 50\text{ ns}$.

high voltage probe (P6015) and a Pearson current monitor (6585). The magnetic cores are inserted to damp reflections when the load is not well matched to the source.

Typical waveforms of voltage, current and energy are shown in figure 4. A series resistor of $R_2 = 0$ or $1\text{ k}\Omega$ is used again to probe its effect on the discharge. The voltage rise time is $\sim 25\text{ ns}$, and it is independent of the series resistor R_2 . Figure 4 shows a current of $\sim 12\text{ A}$ with $R_2 = 1\text{ k}\Omega$ obtained at 14 kV charging voltage. When taking an additional voltage drop of 12 kV across R_2 into account, this amounts to a transformation ratio of 3.8. In another case with $R_2 = 0$ a peak voltage of 41 kV is

obtained at 11.3 kV charging voltage, so the transformation ratio is 3.6. Probably the higher current in this case leads to more losses in the TLT.

The pulse shape appears to be independent of the value of R_2 for the values used here. The width of the corona pulse is indicated in the figure with two dotted lines that are 70 ns apart (the first peak is capacitive, the actual corona current peak is ~ 50 ns). The energy content, as shown in figure 4, is ~ 15 mJ up to the second dotted line. The oscillations after 100 ns show that the impedance of the corona discharge does not match to the power supply. The energy from these oscillations anyway does not contribute to the primary streamer propagation. The matching of TLT-supplies to a corona discharge can be almost perfect in long wire-cylinder discharges at very high currents [29].

2.2. Diagnostic procedure

In all measurements reported here, a point-plane electrode configuration is used, and the distance between the electrodes is adjustable. The anode tip is made of thoriated tungsten and has a radius of ~ 15 μm . The round cathode inner plate is 100 mm in diameter, the outer ring of the divided cathode has an outer diameter of 180 mm. All measurements are performed in ambient air at normal pressure.

Photographs of the discharge are taken with an intensified CCD-camera, a 4QuikE from Stanford Computer Optics with 736 x 572 pixels with 8.6 x 8.3 μm pixel size. The camera is sensible in the optical wave length range of 300 to 800 nm; the figures are actually dominated by emission of the $\text{N}_2(\text{C-B})$ transition that has a decay time of about 1 ns. In the figures within this paper, the focal depth is about 2 cm.

The streamer diameter is determined from iCCD-photographs like in figure 5. When measuring the diameter, care is taken that measurements are done on a single streamer at a place without return stroke, multiple streamers, anode glow or ‘out-of-focus’- effect. To avoid measuring effects of the return stroke, the camera’s gate width is chosen in such a way that only the primary streamer during its flight is photographed, i.e., the gate is less than 100 ns. Voltage oscillations as in figure 4 then do not influence the images. Occasionally a long integration time of several μs is used to show the later evolution after the streamers have reached the cathode. This is in particular done for the C-supply where the voltage decays slowly.

The dotted lines in figure 5 indicate the positions of the cross-sections shown in the profile bars below and beside the picture. Each peak in the profile corresponds to a streamer. The streamer diameter is measured as the full width at half maximum (FWHM) in the profile of the respective peak. At this point, we want to warn the reader that these diameters can deviate from the visual impression of the converted and plotted images: in the plotted images, bright channels will appear wider than faint channels when the FWHM diameter is the same.

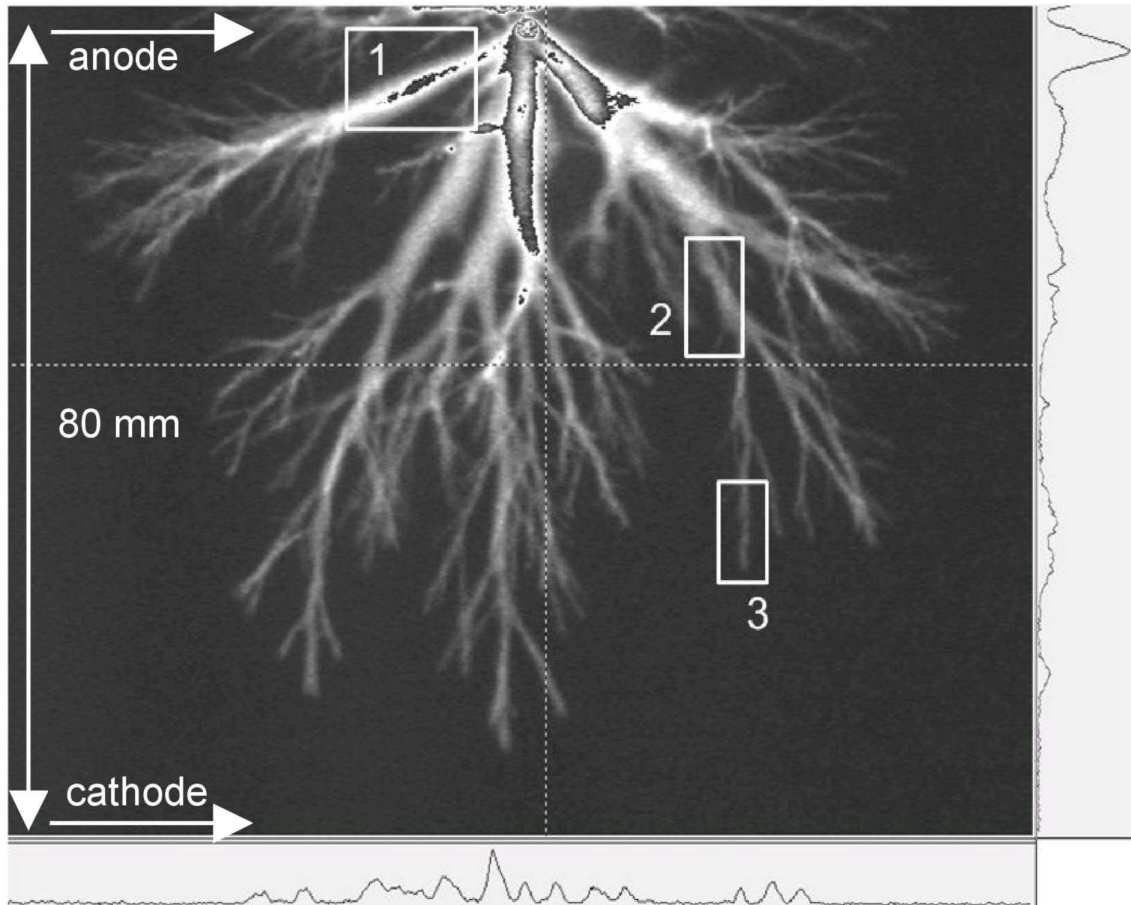


Figure 5. Streamers obtained with the C-supply in an 80 mm gap with $R_2 = 0$, $V_P = 60$ kV and $I_P = 10$ A. Profile bars at the positions indicated by the dotted lines are shown at the right and at the bottom. The optical gate for this photo is ~ 80 ns, during this time the streamers have not crossed the gap yet. The boxes indicate very thick (type 1), thick (type 2) and thin (type 3) streamers. For further discussion, we refer to section 3.

3. Results

3.1. The influence of voltage and gap spacing

Figure 5 shows a typical streamer pattern at atmospheric pressure in a gap of 80 mm under a voltage pulse of 60 kV. Near the anode three streamers with a large diameter can be seen. The clearest one is indicated with a box labeled 1. The FWHM diameter of this streamer is ~ 2.5 mm according to the prescription of section 2.2. The diameter is more or less constant while the streamers propagate towards the cathode. After ~ 20 -30 mm these thick streamers branch and several thinner streamers emerge with a diameter of ~ 1.2 mm. One such streamer is again indicated with a box, labeled 2. Then after shorter travel distances of the order of 5 to 10 mm, the streamers branch

again in even thinner channels. Again, such a thin streamer is indicated by a box and labeled 3. The streamers from now on will be referred to as type 1, 2 or 3 according to the box number shown in figure 5 though we stress that there seems to be a continuous transition between streamers of different diameter, therefore the types should not be misunderstood as a classification of distinct propagation modes.

Reading the diameter of the type 3 streamers from figure 5 leads to a value of ~ 0.7 mm. In this situation, however, one pixel of the CCD camera corresponds to 0.15 mm. Taking into account that there is always some cross-talk between adjacent cells of a CCD array, one could suspect that these 0.7 mm are an overestimation. Indeed, when the CCD camera zooms in into the lower part of the discharge with a factor 2 or a factor 4, always at least 4 pixels in a row transversal to the streamer are illuminated, as summarized in table 1.

Table 1. Diameters of streamers of type 3 in a gap of 80 mm obtained with different zoom factors.

total view (cm)	FWHM width (# pixels)	apparent size (μm)
8	4 – 5	620 – 770
4	4 – 5	290 – 380
2	5 – 6	190 – 230

It is clear that the diameter of the thin streamer is broadened due to instrumental effects when a large gap is imaged onto our CCD camera. When the total view of the camera is decreased to 2 cm, additional broadening sets in with now 5-6 pixels illuminated; this measured result of about 200 μm probably approaches the real streamer diameter. Zooming in further gives problems with focal depth and finding a streamer that meets all requirements for a correct determination of the FWHM. This value of 200 μm is also close to values reported earlier [8, 27, 30]. The measured diameters of the wider streamers of type 1 and 2 are, within experimental errors, not affected by zooming in.

First observations in a 40 mm gap using the TLT-supply have been given in [10] and in [3]. When compared to the photographs of e.g. [27], these pictures appear to give the idea of completely different streamer types, that would be distinguished by different propagation modes and separated by phase transitions. At that time the different appearance was essentially attributed to the TLT-supply with its low internal impedance. Here it will be shown that thick streamers with almost no branching also occur with the C-supply at sufficiently high voltage.

Figure 6 shows four streamer patterns in a shorter gap of 40 mm with a voltage pulse of 54 kV using the C-supply. (Because spark formation had to be prevented, higher voltages could not be explored in this short gap.) Figure 6a is taken with a camera gate time $g = 4$ ns and such a delay t_3 that the observed streamers are in the middle of the gap. As shown previously [3, 31], not the complete streamer emits

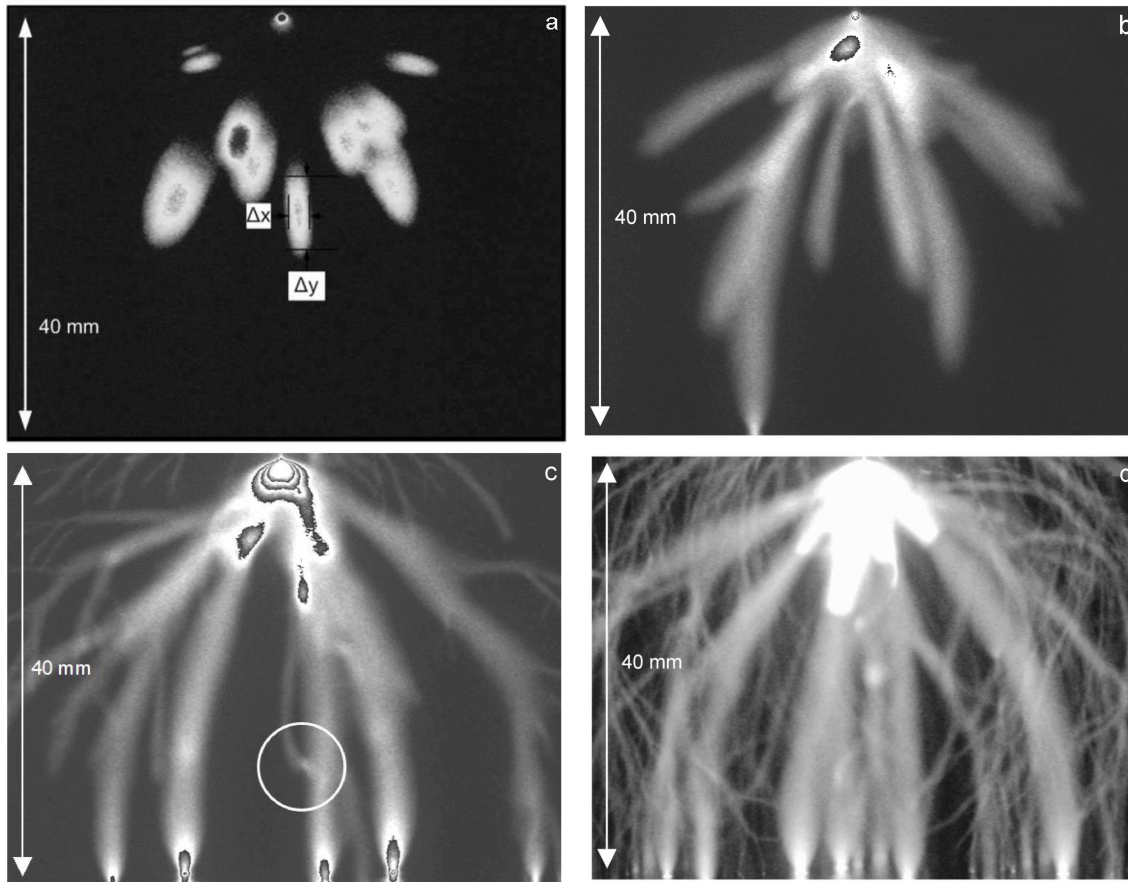


Figure 6. Streamers in a 40 mm gap exposed to 54 kV with the C-supply. ($R_2 = 0$, $V_{DC} = 60$ kV, $V_P = 54$ kV and $I_P = 11$ A.)
Camera gate time: a) 4 ns, b) 50 ns, c) also 50 ns, d) 1.8 μ s.

light, but only the actively growing heads of the channels. The image shows the path that the streamer heads have crossed within the gate time, hence the velocity can be determined. In figure 6a, the traveled distance is $\Delta y = 6$ mm and the gate time is $g = 4$ ns, therefore the local velocity at this part of the gap is 1.5 mm/ns. Note that there is some ambiguity in this determination as some streamers propagate towards or away from the camera and are therefore optically shortened. For our velocity measurements, we choose streamers that stay in focus and that we believe to propagate within the image plane.

Figure 6b is taken with a gate time of the CCD intensifier of 50 ns. The streamers have not yet reached the cathode during this time interval because the gate opened some time before the streamers started. Several thick streamers of type 1 start at the anode, their diameter remains constant or even seems to increase and very few thinner branches are just appearing. The overall pattern in this photo is quite similar to the pattern of the thickest streamers in figure 5 when the different sizes (40 versus 80 mm) of the gaps are taken into account.

Figure 6c shows the discharge development taken with the same gate time of 50 ns. But due to some jitter in the spark gap and the discharge inception, this picture shows a somewhat later stage of the development than figure 6b. The figure shows that the type 1 streamers can fully bridge the gap within these 50 ns as also observed in [3] and [10]. A new interesting feature appears: streamers with a diameter similar to those of type 3 in figure 5 start in the neighborhood of the point. These thin streamers will be called type 4. They mostly start after the thick streamers have reached the cathode. They seem to start at some surface roughness higher up on the anode or somewhere along an existing streamer path. When the integration time of the camera is longer, the thin streamers cross the whole gap. Figure 6c is chosen here particularly because it is not overcrowded with streamers and because it shows how late streamers have emerged from the anode but have not reached the cathode yet. Figure 6d shows how many thin late streamers cross from anode to cathode when a longer gate time is used. Late streamers of type 4 are not observed when using the TLT-supply because the pulses of this supply are much shorter in time (see table 2).

Another remarkable event is observed in the circle drawn in figure 6c. A late streamer does not continue its way to the cathode but appears to bend towards an existing streamer path and seems to connect to it. This effect can, of course, not clearly be concluded from 2D photographs of a 3D event, but it is observed on many photos that a streamer bends towards another straight one and precisely stops at the straight streamer and practically never just before or just after. A plausible explanation for this observation is that a ‘return stroke’ changed the polarity of the early thicker streamer after it connected to the cathode, and that it therefore became electrically attractive for the late streamer. This effect was observed before [10, 27]; a similar event, but probably without prior connection to an ‘electrode’, was recently observed in sprites [32].

Now the behavior in the wider gap of 80 mm as in figure 5 is studied. For this gap length, pulses of 60 kV are strong enough to let the streamers bridge the gap. First, figure 7a shows streamers in an 80 mm gap at an applied voltage of 40 kV using the TLT-supply. These streamers die out roughly halfway the gap. They start as thick streamers at the anode with a diameter corresponding to type 2. They branch into type 3 streamers after ~ 10 to 40 mm.

In figure 7b the voltage is increased to 60 kV. The gate time of the photograph is taken so short that the streamers have not reached the cathode yet. At the anode two streamers of type 1 diameter can be seen that branch into streamers of type 2 after ~ 20 mm. The streamer pattern in this figure, after branching into type 2 streamers, is very similar to the streamer pattern in figure 7a starting right at the anode. A possible conclusion is that the end of the type 1 streamer in the 60 kV discharge plays a similar role as the electrode needle for the 40 kV discharge: it supplies a similar current and voltage for the further streamer evolution.

Figure 7b shows frequent streamer branching that creates many type 3 streamers in practically the whole gap, but in the most pronounced way further away from the anode. These thin streamers do reach the cathode, as is observed on pictures with

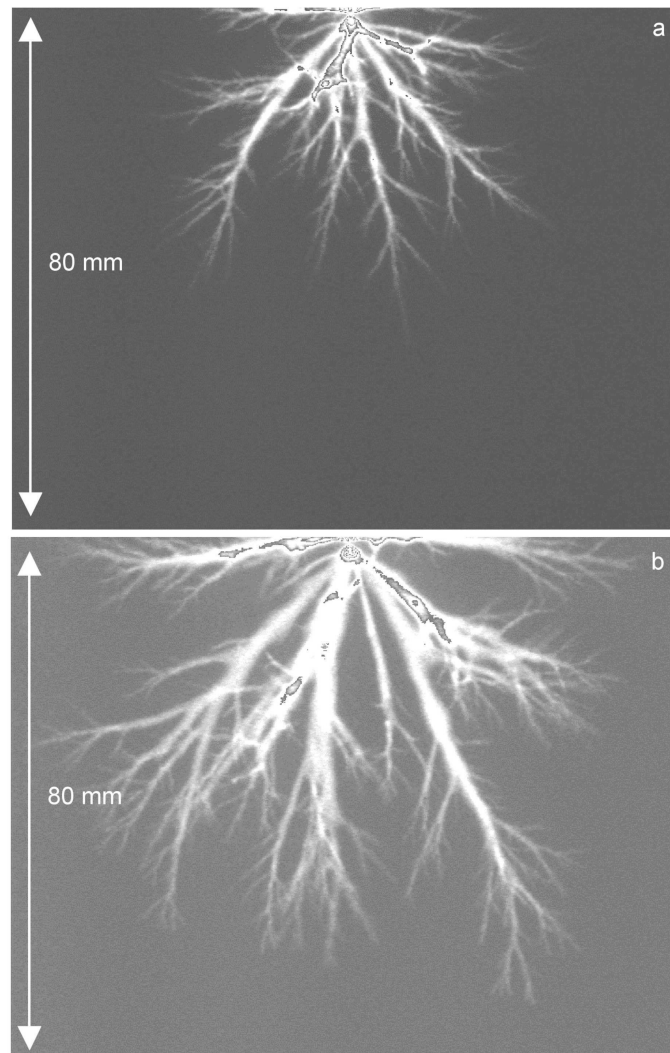


Figure 7. Streamers in an 80 mm gap with TLT-supply and $R_2 = 0$.

a) $V_{DC} = 11$ kV, $V_P = 40$ kV, $I_P = 19$ A.

b) $V_{DC} = 16$ kV, $V_P = 60$ kV, $I_P = 48$ A.

In figure b, the voltage pulse of 60 kV is high enough and the pulse duration is long enough for the streamers to bridge the gap, as other observations show. However, the gate width in this particular picture is chosen so short that the primary streamers have not crossed the gap yet during the camera gate time.

longer optical gate. However, type 4 streamers have not been observed in the 80 mm gap, neither with the short pulse of the TLT-supply nor with the C-supply.

3.2. The influence of the power supply

The C-supply and the TLT-supply have both been operated with a peak voltage V_P on the gap of 40 and 60 kV and with R_2 set to zero or 1 k Ω . The maximum of the DC supply is 60 kV so the peak voltage of the pulse is lower if there is a considerable

current pulse across R_2 . The parameters of the electrical pulses used in this paper are summarized in Table 2.

Table 2. Electrical properties of the pulses. V_{DC} is the voltage of the source and R_2 a resistance in the circuit, see figures 1 and 3. V_P and I_P are peak voltage and peak current at the discharge. t_R is the voltage rise time, dt the halfwidth of the current peak and E the integrated energy of the total peak. The values indicated with ¹ are measured with $R_3 = 4 \text{ k}\Omega$; for the rest $R_3 = 25 \text{ M}\Omega$. The values indicated with ² are an estimate.

	gap (mm)	V_{DC} (kV)	R_2 (k Ω)	V_{peak} (kV)	I_{peak} (A)	t_R (ns)	dt (ns)	E (mJ)
C- supply	40	40	0	40	1.7	30	80	6.4
		60 ¹	0	54	11	30	70	59
		60 ¹	1	42	1	60	120	5.5
	80	60	0	60	$\sim 10^2$	27		
		60	1	57	$\sim 3^2$	51		
TLT- supply	40	11.3	0	40	22	25	25	19
		17.2	0	60	55	26	35	95
	80	11.3	0	40	19	24	35	22
		16	0	60	48	23	25	72
		14	1	40	13	24	50	17
		22	1	60	$\sim 20^2$	23		

Table 2 is not complete because some current measurements were considered to be unreliable due to oscillations. Nevertheless, the table does show several remarkable effects:

1. For given peak voltage the peak current slightly decreases with increased gap spacing.
2. The series resistor R_2 of $1 \text{ k}\Omega$ reduces the peak current by a factor $\sim 0.1 - 0.3$ in the case of the C-supply and by a factor $\sim 0.4 - 0.6$ for the TLT-supply.
3. For $R_2 = 0$ the TLT has a transformation ratio of 3.6 ± 0.1 between peak voltage V_P on the corona gap and V_{DC} of the power source, and for $R_2 = 1 \text{ k}\Omega$ this ratio goes down to 2.8 ± 0.1 . When the voltage across R_2 is added the ratio becomes 3.7 ± 0.1 .
4. The rise time of the C-supply depends on R_2 . The rise time of the TLT-supply does not depend on R_2 .
5. The peak currents with the TLT-supply are 5-10 times larger than those with the C-supply for identical pulse voltages V_P and gaps.

6. The pulse duration of the TLT-supply is shorter.
7. The energies per pulse are a factor 2 to 3 higher for the TLT-supply. This comparison is troublesome because the incompleteness of the dataset is most obvious here. Further, the longer duration of the pulses of the C-supply contain energy of the secondary streamers and the energy of the TLT-supply pulses can be inaccurate due to the oscillations of the TLT.

Now the branching patterns obtained with both power supplies will be compared. The streamer patterns created with both power supplies are not very different when R_2 is zero, see figures 5 and 7b. The main difference is that the thick streamers propagate further in the gap in the case of the TLT-supply. Table 2 shows that there is a difference of a factor ~ 4 in current between figures 5 and 7b.

Figure 8a shows a picture of the 80 mm gap in the case when the resistor $R_2 = 1 \text{ k}\Omega$ is added to the TLT-supply circuit. The current through the discharge decreases from 48 A (figure 7b) to ~ 20 A (for $V_P = 60 \text{ kV}$) while the rise time remains the same. No type 1 or type 4 streamers can be seen. The branching of type 2 streamers into type 3 streamers occurs in figure 8a closer to the anode than in figure 7b. So, the current and the streamer thickness is limited here by the impedance.

When the resistor R_2 is added to the C-supply, not only the maximum current is reduced with a factor three in the 80 mm gap, but also the rise time of the voltage pulse becomes a factor 2 longer. Figure 8b shows the streamer pattern in this situation (figure 5 shows the case with $R_2=0$). Also here there are no type 1 and 4 streamers, and the type 2 streamers are even shorter than in figure 8a. The type 3 streamers fill up the larger part of the gap and branch many times.

The rise time of the voltage in the last case becomes comparable to the gap crossing time of the streamers. So what probably happens is, that the streamers initiate from the needle before the voltage has reached its maximum; therefore initially they form a pattern of thinner streamers corresponding to this lower voltage. Apparently, the streamer diameter cannot increase substantially during the later evolution, while streamers can branch into thinner streamers. A future theoretical study of electric currents and potentials within the streamer pattern will have to shed more light on this evolution.

3.3. The velocity of different streamer types

The streamer velocity at various places in the electrode gap can be obtained from time resolved measurements as demonstrated, e.g., in figure 6a for type 1 streamers or in figure 1 of [3] for type 3 streamers. The travelled distance is measured as the full width half maximum length of the streamer head path and this is divided by the gate width which typically ranges from 4 to 50 ns. This measurement is complicated by several circumstances. First, the spark gap switches have considerable jitter, therefore the time t_2 in figure 2d has a jitter of the order of several tens of nanoseconds. So it is a matter of trial and error to obtain a suitable piece of streamer on a photo in a wanted

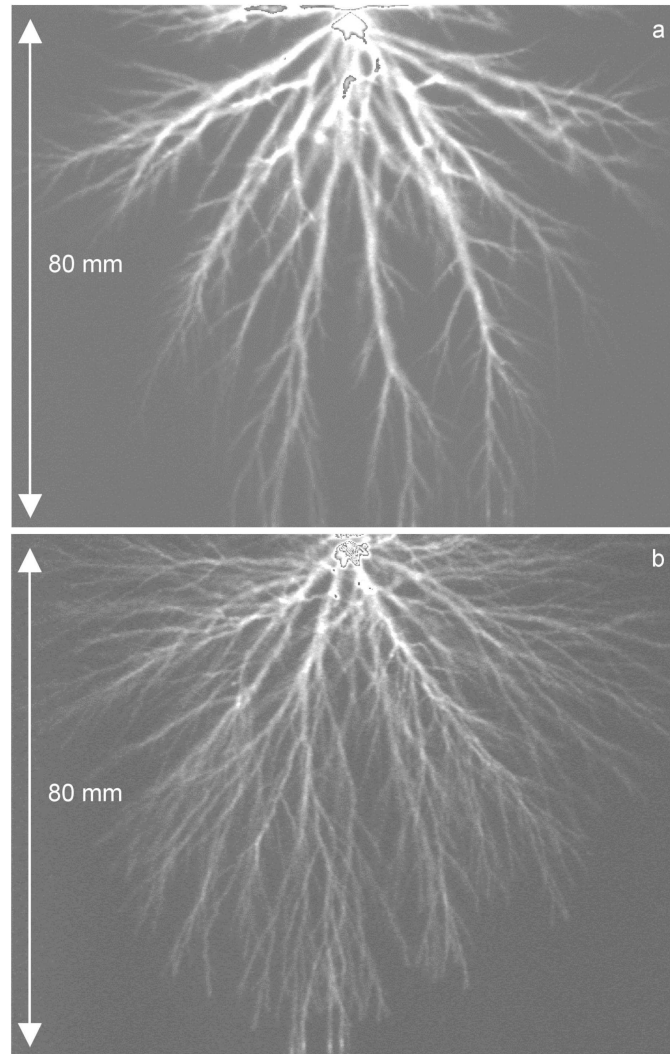


Figure 8. Streamers in an 80 mm gap with $R_2 = 1 \text{ k}\Omega$.

- a) TLT-supply with $V_{DC} = 22 \text{ kV}$, $V_P = 60 \text{ kV}$, $I_P = 20 \text{ A}$, optical gate $50 \mu\text{s}$.
 b) C-supply with $V_{DC} = 60 \text{ kV}$, $V_P = 57 \text{ kV}$, $I_P = 3 \text{ A}$, optical gate $1.4 \mu\text{s}$.

position in the gap. For this reason table 3 could not be completed. A second cause for incompleteness of this table is that not all types of streamers occur under the conditions indicated.

Furthermore, as already said above, there are not really distinguishable streamer types, and a streamer can continuously change from type 1 to type 2 and further to type 3. The table contains measurements on short streamer parts that clearly fall into one particular ‘type’. The shortness of the streamers leads to larger errors in the determined velocity. Therefore the velocities in table 3 have errors and should be understood as representing a broad distribution with widths of 20 – 50 %. Late type 4 streamers appear with considerably more jitter in time. This makes it virtually impossible to determine their velocity with the method used here.

Table 3. Streamer velocities obtained in the 80 mm gap.

	V (kV)	R_2 (k Ω)	velocity (mm/ns) per streamertype		
			1	2	3
C-supply	40	0	-	0.4	0.1
		1	-	-	-
	60	0	1.5	0.5	-
		1	-	1	-
TLT-supply	40	0	-	0.35	0.07
		1	-	-	-
	60	0	1.5	0.4	-
		1	-	0.5	<0.3

Table 3 shows that thick streamers travel faster than thin ones; they also occur closer to the point electrode where the instantaneous local background fields are higher — however, the local background field in the absence of streamers should not be confused with the actual local field when the streamers are present. In ambient air at atmospheric pressure, streamers of type 1 are the fastest with velocities of more than 1 mm/ns. Streamers of type 2 have velocities of ~ 0.5 mm/ns and streamers of type 3 have velocities of ~ 0.1 mm/ns. The velocity range found here is in the same range as in other experiments [7, 8] and calculations [7, 8, 21].

A general trend is that type 2 and type 3 streamers are faster when the applied voltage is higher, but further quantification is not possible at the present stage. For type 1 streamers, the limited amount of data available does not allow conclusions.

4. Discussion and conclusions

4.1. Comparison of power supplies: the role of rise time and internal resistance

In our point-plane gaps of 40 and 80 mm, with pulse amplitudes in the range of 40 – 60 kV, currents are obtained in the range of 1 to 55 A, see table 2. This demonstrates the well-known strongly non-linear relation between peak voltage and peak current of the pulsed corona discharge that in addition are strongly influenced by the different power supplies with their different voltage rise times and internal resistances.

In the C-supply for $V_{DC} = 40$ kV, the voltage rise time increases from 30 to 60 ns when the series resistance $R_2 = 1$ k Ω is added. Assuming that this is an RC charging time, the internal resistance of the power supply, R_C also has to be ~ 1 k Ω . This agrees with a dip of ~ 2 kV when the peak voltage of $V_P = 42$ kV as seen in figure 2; here the peak current is $I_P = 1$ A and the series resistance is $R_2 = 1$ k Ω , see table 2. With $R_2 = 0$ the current almost doubles to 1.7 A. This implies that the discharge adapts to the power supply and changes its internal resistance with almost the same factor of 1.7. So

the consequence of adding R_2 in the C-supply is both a limitation of the current and an increase of the voltage rise time. Under these conditions, the streamers are considerably thinner and carry less current.

The output impedance of the TLT-supply is 200Ω . For a peak voltage $V_P = 60$ kV in the 80 mm gap, the peak current is $I_P = 48$ A when $R_2 = 0$. This corresponds to an internal loss in the power supply of $48 \text{ A} * 200 \Omega = 9.6$ kV. For this peak, 17.2 kV charging voltage was used, so ideally the TLT-supply should produce 69 kV with a transformation ratio of 4. Therefore the peak voltage at the gap should be 59.4 kV, very close to the measured value of 60 kV. With $R_2 = 1 \text{ k}\Omega$, the current drops to ~ 20 A and a charging voltage of 22 kV is required. This leads to a peak voltage on the gap of $4 * 22 \text{ kV} - (1 \text{ k}\Omega + 200 \Omega) * 20 \text{ A} = 64$ kV, again close to the measured value of 60 kV. For the TLT-supply, the resistor R_2 limits the current, but has no influence on the voltage rise time.

The hypothesis that the internal resistance of the power supply determines the streamer pattern when peak voltage and rise time are identical, can be tested by comparing experiments with the C-supply and $R_2=0$ to experiments with the TLT-supply and $R_2=1 \text{ k}\Omega$. This is because the C-supply has an internal resistance of $\sim 1 \text{ k}\Omega$ as derived from its change in rise time while the TLT-supply with R_2 added has $1.2 \text{ k}\Omega$ resistance in total. Indeed, when applying these two power supplies to the 80 mm gap at $V_P = 60$ kV, the C-supply delivers 10 A and the TLT-supply the very similar value of 13 A. Furthermore the streamer patterns in these two cases are quite similar as figures 5 and 8a show. We conclude that power supplies will create similar streamer patterns if their voltage rise time, peak voltage and internal resistance are similar, and that the internal resistance plays a decisive role.

4.2. Thick and thin streamers, streamer branching

For ease of discussion, streamers of different width are characterized here as four different “types”, though they do not seem to be distinguished by phase transitions or different propagation modes:

- Type 1 streamers are very thick with a diameter of about 2.5 mm, their velocity is just over 1 mm/ns and they carry currents of up to 25 A.
- Type 2 streamers are thick with a diameter of about 1.2 mm, a velocity of 0.5 mm/ns and currents of the order of 1 A.
- Type 3 streamers are thin, their diameter is 0.2 mm which can only be properly determined by zooming in sufficiently with the camera (cf. table 1), their velocity is ~ 0.1 mm/ns and their current ~ 10 mA.
- Type 4 streamers are late, they start to propagate after streamers of type 1 or 2 have crossed the gap, their diameter appears to be similar to type 3 streamers, their velocity and current could not be determined but are expected again to be similar to type 3 streamers. Type 4 streamers occasionally connect to the already existing streamer paths of type 1 or 2.

A qualitative explanation of these different streamer diameters is that high local electric fields, in particular, fields that exceed the breakdown threshold [33] close to the needle electrode, create wide streamers. Similar observations of increasing negative streamer diameters in increasing fields can be found in the simulations presented in [16, 23, 24]. On the other hand, if the voltage rise time is comparable to streamer formation and propagation time, streamers can initiate near the needle while the local field is still lower, and the streamers are then more narrow. Therefore one could expect that a voltage rise time of 10 ns or less for a 60 kV voltage pulse would create even thicker streamers. This is consistent with streamers of 10 mm diameter in [9] that are created in a larger dV/dt (pulses of 140 kV with 30 ns rise time) in a wire-cylinder gap of 145 mm radius.

In the present point-plane electrode geometry, streamers approximately keep their initial diameter between branching events, though in a wire-plate electrode geometry recently streamer diameters were observed to grow [34]. The streamers characterized as type 3 and 4 might be streamers of *minimal* diameter. Such a minimal diameter is necessary for the specific mode of streamer propagation by local field enhancement [3]; it requires the streamer diameter to be larger than the thickness of the charged ionization front in the streamer head [3].

In contrast to these streamers of probably minimal diameter (“minimal streamers”), the thick streamers of type 1 and 2 propagate faster and in higher background fields. They seem to come with a continuous variety of diameters. It is surprising to note that the average distance between branching is much larger for thick streamers than for thin streamers. An explanation for this fact is presently not at hand.

Another intriguing phenomenon is that late (type 4) streamers can bend towards earlier channels as shown, e.g., in figure 6b. Similar phenomena have recently been observed in sprites [32]. However, in the present setup, it is likely that the streamer channels change polarity after reaching the electrode and therefore attract later streamers; this mechanism is unlikely for sprites in high layers of the atmosphere.

4.3. An estimate on the current density

We observe that the current density in streamers seems to be rather unchanged in quite different streamer patterns generated by different circuits. The estimate is based on the fact that the peak current lasts about as long as the streamers propagate.

The highest current peak measured is 48 A in figure 7b. When one assumes that this current initially near the electrode is carried by only two thick streamers with a diameter of 5 mm, the current density in such a streamer is ~ 1.2 A/mm². Looking further down in the same figure, 12 streamers of type 2 can be identified. With a diameter of 1.2 mm this gives a current density of ~ 3.5 A/mm². Figure 8b shows the measurement with the largest number of thin streamers, namely more than 200. Here the current is 3 A in total, i.e., ~ 0.015 A per streamer. The diameter of this type 3 streamer is 0.2 mm, therefore the current density is 0.5 A/mm².

According to this very rough estimate, the current density within the streamer varies by a factor of ~ 7 while the current within a single streamer varies by a factor ~ 1600 .

4.4. Final remarks and theoretical challenges

Pulsed positive corona discharges in air show a large variety of streamer diameters and consecutive branching patterns. We suggest that this is determined by three properties of the external electric circuit: the peak voltage, the voltage rise time and the internal resistance.

We have presented our experimental results. It appears that all streamer photographs known to us fit in the presented frame of different diameters under the indicated conditions, such as gap size and pulse parameters. Obviously they ask for theoretical explanation: can theory reproduce streamer diameters, current, current density and velocity as a function of the external circuit? Which additional insight does theory give into the inner structure of the streamer that is experimentally not accessible? The recent progress in numerical simulations of streamer dynamics, e.g. in [8, 16, 20, 22, 23, 24], appears to make it possible to address the questions raised here in the near future.

A detailed understanding of the generated streamer structures requires us to distinguish different stages of the dynamics, namely *(i)* the inception and nucleation process next to the pointed anode, *(ii)* the streamer propagation and branching dynamics, and *(iii)* the late stages of evolution after the first streamers have crossed the gap. These are clearly distinct processes and should be analyzed separately. *(i)* The first step is the streamer inception. Our experiments show that a fast rise to a high voltage together with a low impedance of the circuit favor the formation of thick streamers next to the pointed electrode; these streamers are fast and can carry a high current. For the formation of these streamers, the source of free electrons and the anode processes in the instantaneous local field need to be modelled appropriately. An ionization seed is formed in the high field region around the pointed electrode that then propagates outwards and destabilizes into a number of streamer branches. This nucleation process determines the number and size of the emerging streamers. *(ii)* In the second phase each streamer carries a given charge, enhances the local field and propagates outwards. Here the challenge lies in understanding the diameter, velocity and branching process of a streamer head that is characterized by a certain head potential and charge content. We stress our conviction [3] that the electric potential alone is an insufficient characterization, and that different streamer diameters need to be related to different amounts of electric charge carried by the respective streamer heads. The splitting of one thick into several thinner streamers is then understood also as a splitting of the charge content of the original streamer over several new streamers — where we emphasize that electric charge is a conserved physical quantity. *(iii)* After the streamer has reached the cathode, return stroke and electric recharging determine the further

current flow and electric interaction of the channel.

We conclude with remarking that recently it was shown that the thick streamers created by very short pulses are very efficient for ozone productions [34, 35]. They also use the power supply in the most efficient way [29]. The present study therefore not only increases our fundamental knowledge on streamer discharges, but is also very relevant for applications.

Acknowledgments

This work is financially supported by STW under contract number CMM 6501 and by NWO under contract number 047.016.017.

References

- [1] Raether H 1939 *Z. Phys.* **112** 464
- [2] Meek J M and Craggs J D 1953 *Electrical breakdown of gases* (Oxford, Clarendon Press)
- [3] Ebert U, Montijn C, Briels T M P, Hundsdorfer W, Meulenbroek B, Rocco A and van Veldhuizen E M 2006 *Plasma Sources Sci. Technol.* **15** S118
- [4] Waters R T and Jones R E 1964 *Phil. Trans. Roy. Soc. London Ser. A* **256** 185
- [5] van Veldhuizen E M (ed.) 2000 *Electrical Discharges for Environmental Purposes: Fundamentals and Applications* (Huntington, NY: Nova Science Publishers), ISBN 1-56072-743-8, 420 pages
- [6] Bastien F and Marode E 1979 *J. Phys. D: Appl. Phys.* **12** 249
- [7] Creighton Y L M, van Veldhuizen E M and Rutgers W R 1993 "Electrical and optical study of pulsed positive corona", in: "Non-Thermal Plasmas for Pollution Control", ed. by B.M. Penetrante and S.E. Schultheis, NATO ASI Series, Springer, subseries G, vol. 34, part A, p. 205-230.
- [8] Pancheshnyi S V, Nudovna M and Starikovskii A Y 2005 *Phys. Rev. E* **71** 016407
- [9] Blom P P M, Smit C, Lemmens R H P and van Heesch E J M 1994 "Combined Optical and Electrical Measurements on Pulsed Corona Discharges", *Gaseous Dielectrics VII*, Edited by L.G. Christophorou and D.R. James, Plenum Press, New York
- [10] Grabowski L R, Briels T M P, van Veldhuizen E M and Pemen A J M 2005 "Streamers in pulsed positive corona: low and high current regimes", XVIIth ICPIG, Eindhoven, the Netherlands, file 04-425, available on www.icpig2005.nl
- [11] Sentman D D, Wescott E M, Osborne D L and Heavner M J 1995 *Geophys. Res. Lett.* **22** 1205
- [12] Pasko V P, Stanley M A, Mathews J D, Inan U S and Wood T G 2002, *Nature* **416** 152
- [13] Gerken E A and Inan U S and Barrington-Leigh C P 2002 *Geophys. Res. Lett.* **29** 82
- [14] Zheleznyak M, Mnatsakanyan A and Sizykh S 1982 *High Temp.* **20** 357
- [15] Liu N, Pasko V P 2004 *J Geophys. Res.* **109** A04301
- [16] Luque A, Ebert U, Montijn C and Hundsdorfer W 2006 "Photoionization in negative streamers: fast computations and two propagation modes", preprint: <http://arxiv.org/abs/physics/0609247>
- [17] Dawson G A and Winn W P 1965 *Z. Phys.* **183** 159
- [18] D'yakonov M I and Kachorovskii V Yu 1988 *Sov. Phys. JETP* **67** 1049
- [19] Raizer Yu P and Simakov A N 1998 *Plasma Phys. Rep.* **24** 700
- [20] Liu N and Pasko V P 2006 *J. Phys. D: Appl. Phys.* **39** 327
- [21] Kulikovskiy A A 1998 *Phys. Rev. E* **57** 7066
- [22] Pancheshnyi S V and Starikovskii A Y 2003 *J. Phys. D: Appl. Phys.* **36** 2683
- [23] Montijn C, Ebert U and Hundsdorfer W 2006 *Phys. Rev. E* **73** 065401(R).
- [24] Montijn C, Hundsdorfer W and Ebert U 2006 "An adaptive grid refinement strategy for the

- simulation of negative streamers" *J. Comp. Phys.* [paper available online from Elsevier's science direct, in print] (doi: 10.1016/j.jcp.2006.04.017)
- [25] Arrayás M, Ebert U and Hundsdorfer W 2002, *Phys. Rev. Lett.* **88** 174502
 - [26] Rocco A, Ebert U and Hundsdorfer W 2002, *Phys. Rev. E* **66** 035102
 - [27] van Veldhuizen E M and Rutgers W R 2002 *J. Phys. D: Appl. Phys.* **35** 2169
 - [28] Gravendeel B 1987 PhD thesis, Eindhoven Univ. Techn., The Netherlands
 - [29] Yan K, van Heesch E J M, Pemen A J M, Huijbrechts P A H J and van der Laan P C T 2001 *Rev. Sci. Instr.* **72** 2443
 - [30] Briels T M P, van Veldhuizen E M and Ebert U 2005 "Experiments on the diameter of positive streamers in air", XVIIth ICPIG, Eindhoven, the Netherlands, file 04-418, available on www.icpig2005.nl
 - [31] van Veldhuizen E M, Kemps P C M and Rutgers W R 2002 *IEEE Trans. Plasma Sci.* **30** 162
 - [32] Cummer S A, Jaugey N, Li J, Lyons W A, Nelson T E and Gerken E A 2006 *Geophys. Res. Lett.* **33** L04104
 - [33] Montijn C and Ebert U 2006 *J. Phys. D: Appl. Phys.* **39** 2979
 - [34] Winands G J J, Liu Z, Pemen A J M, van Heesch E J M, Yan K and van Veldhuizen E M 2006 *J. Phys. D: Appl. Phys.* **39** 3010
 - [35] Grabowski L R, van Veldhuizen E M, Pemen A J M and Rutgers W R 2006 *Plasma Chem. Plasma Procs.* **26** 3