


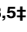



RESEARCH ARTICLE

Calcimimetic R-568 vasodilatory effect on mesenteric vascular beds from normotensive (WKY) and spontaneously hypertensive (SHR) rats. Potential involvement of vascular smooth muscle cells (vSMCs)

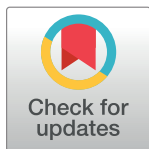
Natalia Di Pietro^{1,2,3}, Maria Assunta Potenza⁴, Sara Di Silvestre^{2,3,5}, Francesco Addabbo⁴, Nadia Di Pietrantonio^{2,3,5}, Pamela Di Tomo^{1,2,3}, Caterina Pipino^{2,3,5}, Domitilla Mandatori^{1,2,3}, Carola Palmerini^{2,3,5}, Paola Failli⁶, Mario Bonomini^{1,2}, Monica Montagnani⁴, Assunta Pandolfi^{2,3,5}

1 Department of Medicine and Aging Sciences, University “G. d’Annunzio” of Chieti-Pescara, Chieti, Italy, **2** Aging and Translational Medicine Research Center (CeSI-MeT), University “G. d’Annunzio” of Chieti-Pescara, Chieti, Italy, **3** “G. d’Annunzio” University Foundation, Chieti, Italy, **4** Department of Pharmacology and Human Physiology, University of Bari, Bari, Italy, **5** Department of Medical, Oral and Biotechnological Sciences, University “G. d’Annunzio” of Chieti-Pescara, Chieti, Italy, **6** Department of Neurofarba, Pharmacology and Toxicology Unit, University of Florence, Florence, Italy

 These authors contributed equally to this work.

‡ These authors also contributed equally to this work.

* assunta.pandolfi@unich.it



OPEN ACCESS

Citation: Di Pietro N, Potenza MA, Di Silvestre S, Addabbo F, Di Pietrantonio N, Di Tomo P, et al. (2018) Calcimimetic R-568 vasodilatory effect on mesenteric vascular beds from normotensive (WKY) and spontaneously hypertensive (SHR) rats. Potential involvement of vascular smooth muscle cells (vSMCs). PLoS ONE 13(8): e0202354. <https://doi.org/10.1371/journal.pone.0202354>

Editor: Luis Eduardo M. Quintas, Universidade Federal do Rio de Janeiro, BRAZIL

Received: April 12, 2018

Accepted: August 1, 2018

Published: August 9, 2018

Copyright: © 2018 Di Pietro et al. This is an open access article distributed under the terms of the [Creative Commons Attribution License](https://creativecommons.org/licenses/by/4.0/), which permits unrestricted use, distribution, and reproduction in any medium, provided the original author and source are credited.

Data Availability Statement: All relevant data are within the paper.

Funding: The authors received no specific funding for this work.

Competing interests: The authors have declared that no competing interests exist.

Abstract

The potential role of calcimimetics as vasculotropic agents has been suggested since the discovery that calcium sensing receptors (CaSRs) are expressed in cardiovascular tissues. However, whether this effect is CaSR-dependent or -independent is still unclear. In the present study the vascular activity of calcimimetic R-568 was investigated in mesenteric vascular beds (MVBs) isolated from Spontaneously Hypertensive rats (SHR) and the relative age-matched Wistar-Kyoto (WKY) control rats. Pre-constricted MBVs were perfused with increasing concentrations of R-568 (10 nM– 30 μM) resulting in a rapid dose-dependent vasodilatation. However, in MVBs from SHR this was preceded by a small but significant vasoconstriction at lowest nanomolar concentrations used (10–300 nM). Pre-treatment with pharmacological inhibitors of nitric oxide (NO) synthase (NOS, L-NAME), K_{Ca} channels (CTX), cyclo-oxygenase (INDO) and CaSR (Calhex) or the endothelium removal suggest that NO, CaSR and the endothelium itself contribute to the R-568 vasodilatory/vasoconstrictor effects observed respectively in WKY/SHR MVBs. Conversely, the vasodilatory effects resulted by highest R-568 concentration were independent of these factors. Then, the ability of lower R-568 doses (0.1–1 μM) to activate endothelial-NOS (eNOS) pathway in MVBs homogenates was evaluated. The Akt and eNOS phosphorylation levels resulted increased in WKY homogenates and Calhex significantly blocked this effect. Notably, this did not occur in the SHR. Similarly, vascular smooth muscle cells (vSMCs) stimulation with lower R-568 doses resulted in Akt activation and increased NO production in WKY but not in SHR cells. Interestingly, in these cells this was associated with the absence of the biologically

active dimeric form of the CaSR thus potentially contributing to explain the impaired vasorelaxant effect observed in response to R-568 in MVB from SHR compared to WKY. Overall, these findings provide new insight on the mechanisms of action of the calcimimetic R-568 in modulating vascular tone both in physiological and pathological conditions such as hypertension.

Introduction

The extracellular calcium (Ca^{2+}) sensing receptors (CaSRs) are important in maintaining and regulating mineral ion homeostasis in parathyroid, kidney, gut and bone tissues [1, 2]. The discovery that CaSRs are widely expressed in the heart as well as in the blood vessels has suggested their physiological involvement in cardiovascular processes such as vessel remodeling and calcification; similarly, acute CaSR-mediated activation has been proposed to participate in the maintenance of vascular tone and modulation of blood pressure levels [3–8]. However, whether the aforementioned cardiovascular effects are secondary to CaSR-dependent regulation of Ca^{2+} homeostasis in other organs or directly related to CaSR modulation in vascular tissues is still unclear, and the exact mechanisms underlying CaSR activation remain to be elucidated [3].

In the local control of vascular tone, the role played by the endothelial-mediated release of the vasodilator nitric oxide (NO) is universally recognized [9]. A direct vascular function of the endothelial CaSR is supported by the finding that stimulation of human aortic endothelial cells with polyamine spermine (CaSR type I agonist) leads to an increase of intracellular Ca^{2+} accompanied by NO production [10], whereas treatment with the CaSR antagonist NPS2390 attenuates extracellular Ca^{2+} -dependent NO-mediated relaxation in endothelium-intact aortic rings from mice [11].

Interestingly, CaSR seems also actively involved in the modulation of myogenic tone in response to changes in Ca^{2+} concentration, as initially demonstrated in rat subcutaneous small arteries and more recently observed in aorta and mesenteric artery of transgenic mice with specific CaSR knockout (CaSR KO) in vascular smooth muscle cells (vSMCs) [5, 12]. These data, together with other recent evidences, suggest that CaSR may mediate a dual direct activity on blood vessels: activation of endothelial CaSR results in a NO-dependent pro-relaxing effect, whereas stimulation of CaSR located on vSMCs may elicit a pro-contractile effect [13, 14].

Based on these observations, the development and investigation of compounds able to modulate CaSR activity might represent an additional strategy in the control of cardiovascular homeostasis. Nevertheless, *in vitro* and *ex vivo* studies on vSMCs and endothelial cells suggest that drugs proposed as calcimimetics might be able to regulate vascular tone independently from CaSR activation [15–18]. For example, a CaSR-independent relaxant effect of calcimimetics has been ascribed to their ability to inhibit the Ca^{2+} influx via L-type Ca^{2+} channels [15, 16]. Other authors have proposed that calcimimetic-mediated NO production might depend on stimulation of the big or large conductance Ca^{2+} -activated potassium channel (BKCa) channels in vSMCs [18], while activation of intermediate conductance Ca^{2+} -activated potassium (IKCa) channels in endothelium may explain vasorelaxation through release of endothelium-derived hyperpolarizing factor (EDHF) [19, 20].

These observations are in line with our recent findings [17], evaluating the activity of calcimimetic R-568, a type II indirect allosteric CaSR modulator [21], in human umbilical vein endothelial cells (HUVECs). We found that, although expressed in endothelial cells, CaSR

protein was mainly distributed in cytoplasm, while the functional CaSR dimers usually localize on the plasma membrane. In addition, increased intracellular Ca^{2+} concentration and endothelial NO synthase (eNOS) activation in response to both R-568 and its enantiomer S-568 were unchanged in the absence or the presence of the CaSR blocker Calhex-231 [17]. Accordingly, an acute and CaSR-independent hypotensive effects has been reported following infusion of R-568 and S-568 in rat renal and mesenteric arteries [22]. Therefore, whether R-568 may exert CaSR-dependent or CaSR-independent vascular effects that might physiologically contribute to regulation of vascular tone is still under debate.

Finally, to add complexity, it is important to consider that calcimimetic-dependent vascular effects might vary under conditions altering endothelial function/integrity such as hypertension. On this regard results are still controversial, since some studies report an *in vivo* calcimimetic hypotensive effects in both normotensive [23] and spontaneously hypertensive (SHR) rats [24] while others found that R-568 significantly decreased blood pressure in uremic and SHR animals, but not in normotensive rats [25]. Importantly, when these drugs are administered *in vivo*, the hypothetical contribution of direct vascular effects and the calcimimetic-mediated suppression of parathyroid hypertensive factors are hard to dissect [3].

This last observation suggests that studies on isolated and perfused vessels might offer the possibility to evaluate the direct vascular effects of calcimimetics avoiding confounding factors such as modulation of calcium in non-cardiovascular districts. In the present study, the potential CaSR-dependent/independent vasodilatory effects of R-568, along with the intracellular signaling pathway activated, was comparatively evaluated in mesenteric vascular bed (MVB) and cultured vSMCs, from SHR rats and normotensive WKY controls.

Materials and methods

Animals

All procedures in animals were performed in accordance with the Guide for the Care and Use of Laboratory Animals (NIH Publication No. 85–23, revised 1996) and approved by the Committee on the Ethics of Animal Experiments of the University of Bari (Prot. N. 60901-X/10) under Authorization for the Use of Laboratory Animals (Italian Government, Ministry of Health, Prot. N.86851493).

Twenty 8-week old male Spontaneously Hypertensive rats (SHR, 311.0 ± 7.14 g) and twenty age-matched normotensive Wistar-Kyoto (WKY, 309.5 ± 9.7 g) control rats were obtained from Charles River (Milan, Italy) and used in all studies. Animals were housed in 12 hours light/dark cycle, at 22°C, and allowed *ad libitum* access to diet and water.

The blood pressure of WKY and SHR rats was randomly measured in conscious rats using BP-2000 (Visitech Systems, Apex, North Carolina, USA), a non-invasive computerized system for recording blood pressure from rodent tails. Systolic blood pressure, measured at 8 weeks, ranged from 119 to 137 mmHg in WKY and from 153 to 176 mmHg in SHR.

Rats were anesthetized with sodium pentobarbital (80 mg/kg body weight i.p.), heparinized (400 U.I./100g body weight i.p.) and euthanized by cervical dislocation. All efforts were made to minimize animal suffering.

Reagents

Heparin was purchased from Pfizer (Pfizer Srl, Rome, Italy); noradrenaline (NA), acetylcholine (ACh), N ω -nitro-L arginine methyl ester (L-NAME), charybdotoxin (CTX) and indomethacin (INDO) were purchased from Sigma (Sigma-Aldrich Chemicals, St.Louis, MO, USA). Stock solutions of NA (100 mM) and ACh (10 mM) were prepared with distilled water. R-568 hydrochloride powder was provided by Amgen (Amgen, Inc., Thousand Oaks, CA,

USA), resuspended in distilled water at 2 mM concentration and stored at -20°C . Calhex-231 (Santa Cruz Biotechnology, Heidelberg, Germany) was resuspended in ethanol at 10 mM concentration and stored at -20°C . Final dilutions of all drugs were prepared in modified Krebs-Henseleit solution immediately before use.

***Ex-vivo* vascular studies**

Mesenteric vascular beds (MVB) were isolated and removed from fourteen WKY and fourteen SHR rats as previously described [26]. Briefly, MVB mounted in a temperature-controlled moist chamber (type 834/1, Hugo Sachs Elektronik, March-Hungstetten, Germany) were perfused with modified Krebs-Henseleit solution continuously gassed with a mixture of 95% O_2 and 5% CO_2 (pH 7.4). A constant flow rate of 5 ml/min through the MVB was maintained using a peristaltic pump (ISM 833; Hugo Sachs Elektronik, March-Hungstetten, Germany). Drug solutions were infused into the perfusate proximal to the arterial cannula using another peristaltic pump. After an equilibration period (30–40 min), changes in perfusion pressure (PP) were measured with a Pressure Transducer System (SP 844 Capto, Horten, Norway) and recorded continuously using data acquisition and analysis equipment (PowerLab System, ADInstruments, Castle Hill, Australia).

Vasodilator responses in MVB were measured in vessels pre-constricted with NA according to previous studies [27], to obtain comparable baseline PP values of approximately 120 mmHg in WKY and SHR, MVB preparations were continuously perfused with NA 10 and 3 μM , respectively. Dose-response curves measuring vasodilation (decrease in PP) in response to R-568 were obtained by adding increasing concentrations of R-568 (10 nM– 30 μM /4 min perfusion) into the perfusate. Relative changes in PP at steady-state reached with each dose were measured and expressed in mmHg. For all vasodilation experiments, data from each curve were then normalized to PP obtained with a maximally stimulating dose of ACh (1 μM , 100% representing initial steady-state perfusion pressure and 0% representing maximal reduction in response to ACh). In some experiments, R-568-induced relaxation was measured after 20-min treatment with NOS inhibitor L-NAME (100 μM), alone or combined with large and intermediate-conductance Ca^{2+} -activated potassium channels (BK_{Ca} and IK_{Ca}) antagonist CTX (300 nM) and cyclooxygenase 1/2 (COX1/2) inhibitor INDO (10 μM). In other experiments, R-568-induced relaxation was measured in the absence and in the presence of CaSR blocker Calhex-231 (3 μM), or in the absence of endothelium. Endothelium removal was performed by flushing vessels intermittently with air for several minutes as previously described [27] and verified by complete lack of vasodilation induced by infusion of 1 μM ACh.

Cell cultures

Vascular smooth muscle cells (vSMCs) were obtained from thoracic aortas of six normotensive (WKY-vSMCs) and six hypertensive (SHR-vSMCs) animals as previously described [28–30].

Briefly, thoracic aortas were dissected, transferred into a Petri dish containing Dulbecco's Modified Eagle's Medium low glucose (DMEM-LG) and discharged from fatty tissues. Subsequently, aortas were cut longitudinally and endothelial cells were removed through rubbing. The three vessel layers were cut into small pieces (1–2 mm) and maintained for 2 hours at 37°C in DMEM-LG containing 0.1% elastase and 0.1% collagenase type IA. Following a centrifugation to 250 g for 10 min, the supernatant were discarded and the cells were re-suspended in culture medium composed of Ham's F12 Medium (Sigma-Aldrich Chemicals, St. Louis, MO, USA), 20% Fetal Bovine Serum (FBS, Gibco-Life Technologies, Monza, Italy), 1% penicillin/streptomycin and 1% L-glutamine (Sigma-Aldrich Chemicals, St. Louis, MO, USA). The cells were grown under a controlled atmosphere (5% CO_2 and 37°C) until confluence (8 ± 10

days). The characterization of α -smooth muscle actin (α -SMA) expression in WKY/SHR-vSMCs was performed by flow cytometry.

In all experiments, vSMCs were starved for 16 hours with Ham's F12 Medium (Sigma-Aldrich Chemicals, St. Louis, MO, USA) containing 0.1% Fetal Bovine Serum (FBS, Gibco-Life Technologies, Monza, Italy), and subsequently stimulated with R-568 molecule (1 μ M). In some experiments, before stimulation with R-568, cells were pre-incubated for 15 minutes with CaSR Inhibitor, Calhex 231 (1 μ M).

Flow cytometry

The protein expression of α -SMA in permeabilized WKY- and SHR- vSMCs was evaluated by fluorescent-activated cell sorting (FACS) FACS Canto II (BD Biosciences, California, USA).

Briefly, WKY- and SHR- vSMCs were pelleted by centrifugation at 1500 rpm for 5 min and resuspended in PBS. Then, 5×10^5 cells/sample were fixed and permeabilized using FACS Lysing and Permeabilizing Solution (BD, CAT. 349202 and 340973 respectively). Permeabilized cells were incubated with a mouse monoclonal against α -SMA (Sigma-Aldrich, 1:100) for 30 minutes on ice and successively stained with the corresponding secondary antibody (Anti-mouse FITC, 1:100, Jackson ImmunoResearch) for 30 min on ice. To assess non-specific fluorescence, samples were stained with the secondary antibody alone (control).

NOS activity

NOS activity was evaluated in the WKY and SHR cells by measuring the conversion of L-[3H]-arginine into L-[3H]-citrulline as previously described [28, 31]. Briefly, WKY- and SHR-vSMCs were grown at confluence and then stimulated with R-568 (1 μ M) in the absence or the presence of Calhex-231 (1 μ M). Subsequently, cells were detached, resuspended in 0.2 ml of reaction buffer (20 mmol/L Hepes- Na^+ , 0.5 mmol/L EDTA, 1 mmol/L dithiothreitol, pH 7.2) and sonicated on ice. In each test tube containing 100 μ l of cell lysate, the following reagents were added: 2 mmol/L NADPH, 1.5 mmol/L CaCl_2 , 0.1 mmol/L tetrahydrobiopterin (BH4, Sigma-Aldrich Chemicals, St. Louis, MO, USA), 2.5 μ Ci L-[3H]-arginine (corresponding to 0.4 μ M) (Perkin Elmer SpA, Milan, Italy). After 15 min incubation at 37°C, the reaction was stopped by adding 2 ml Hepes- Na^+ pH 6 containing 2 mmol/L EDTA; the entire reaction mixture was applied to 2 ml of Dowex AGWX8-200 columns (Sigma-Aldrich Chemicals, St. Louis, MO, USA) and eluted with 4 ml of water. The radioactivity corresponding to L-[3H]-citrulline content in the eluate was measured by a liquid scintillation analyzer (Perkin Elmer SpA, Milan, Italy). NOS activity was expressed as pmol/NO/min/mg protein total.

Immunoblotting analysis

Expression of protein of interest in vSMCs and whole vessel lysates was assessed by immunoblotting with specific antibodies according to standard methods [32]. In each sample, total protein content was quantified using the BCA Protein Assay Kit (Pierce Biotechnology Inc, Rockford, USA). Samples were subjected to electrophoretic separation by 8–10% SDS-PAGE. For tissue samples, MVB homogenates (35 μ g) were immunoblotted with α -eNOS (BD Transduction Laboratories, CA, USA), phospho-eNOS^{Ser1179}, Akt, phospho-Akt^{Ser473} (Cell Signaling Technology, Leiden, Netherlands), or monoclonal anti- α smooth muscle actin (α -actin, Sigma-Aldrich Chemicals, St. Louis, MO, USA) antibodies (1:1000, at 4°C overnight). For vSMCs, lysates (30 μ g) were immunoblotted with CaSR (Thermo Fisher Scientific, Milan, Italy) and its positive (HEK293 CaSR transiently transfected cell lysate) and negative (HEK293 empty vector transfected control cell lysate) controls (both from Novus Biologicals, UK), Akt,

phospho-Akt^{Ser473} and β -actin (Sigma-Aldrich Chemicals, St. Louis, MO, USA) antibodies (1:1000, at 4° C overnight).

Incubation with specific mouse or rabbit HRP-linked secondary antibodies (1:3000; Santa Cruz Biotechnology, Heidelberg, Germany) was performed for 1 h at room temperature. Immunoblotting results were visualized using enhanced chemiluminescence (ECL) reagents (Amersham Pharmacia Biotech SpA, Milan, Italy) by Molecular Imager[®] ChemiDoc[™] XRS System (Bio-Rad Laboratories Srl, Milan, Italy). Images were captured with QuantityOne Software (Bio-Rad Laboratories Srl, Milan, Italy) and blots quantified by scanning densitometry (ImageJ, NIH, Bethesda). In some experiments, the immunoreactive bands were detected using the Alliance 4.7 system (Uvitec Limited, Cambridge, UK).

Statistical analysis

Results were expressed as mean \pm SEM of n experiments (n = number of rats) for *ex-vivo* experiments, while *in-vitro* results were expressed as mean \pm SD. Two-way ANOVA for repeated measures and Student's t tests (paired or unpaired) were used as appropriate. Values of $p < 0.05$ were considered to indicate statistical significance.

Results and discussion

Vascular effects of R-568 in MVB from WKY and SHR rats

Calcimimetics are allosteric CaSR activators proposed as potential anti-hypertensive drugs following the discovery that their systemic administration reduces blood pressure in animal models [3–5]. However, although CaSRs are expressed on endothelial and vSMC cells, their role in the regulation of vascular tone under healthy and pathophysiological conditions has not been definitively clarified [33]. Moreover, both CaSR-dependent and CaSR-independent mechanisms have been proposed to explain calcimimetic hemodynamic effects with uncertain and sometimes controversial results [5, 10, 12, 15–18].

To shed light on these issues, we investigated cellular mediators and signaling mechanisms responsible for the direct vascular effects of the calcimimetic R-568 on whole perfused vessels and on isolated vSMCs obtained from spontaneously hypertensive rats (SHR) and their relative Wistar-Kyoto (WKY) controls. SHR animals share many common features with human genetic hypertension and, at 8-week of age, they manifest endothelial dysfunction and are prone to vascular dysreactivity [34]. Importantly, changes in endothelial function observed in mesenteric vascular bed (MVB) have been shown to parallel, or even precede, changes in vascular reactivity, elasticity, and volume of large conductance arteries [27]; therefore, the behaviour of this vascular district is considered a useful proxy for the function of vascular beds that contribute more directly to systemic blood pressure [27, 33].

MVB from SHR rats are significantly more sensitive and responsive to the vasoconstrictor actions of NA with respect to MVB from WKY [27]. Based on this, and according to previous experience [26, 27, 35, 36] we infused NA at 3 μ M or 10 μ M concentration, respectively, to obtain a similar baseline perfusion pressure (PP) of \sim 120 mmHg, rather than infusing an identical NA dose for both SHR and WKY. The NA concentration chosen was the dose achieving submaximal vasoconstriction in SHR and WKY, respectively, from dose-response curves (10 nm–10 μ M) preliminary obtained *ex-vivo*. Before administration of R-568, a supramaximal dose of the vasodilator ACh (1 μ M) was added to verify endothelial integrity. Subsequently, increasing concentrations of R-568 (10 nM–30 μ M/4 min perfusion) were infused in a non-cumulative manner into the preparations.

As shown in Fig 1A, administration of R-568 in MVB from WKY resulted in a rapid, reversible, and dose-dependent reduction of PP, starting with the lowest concentration used

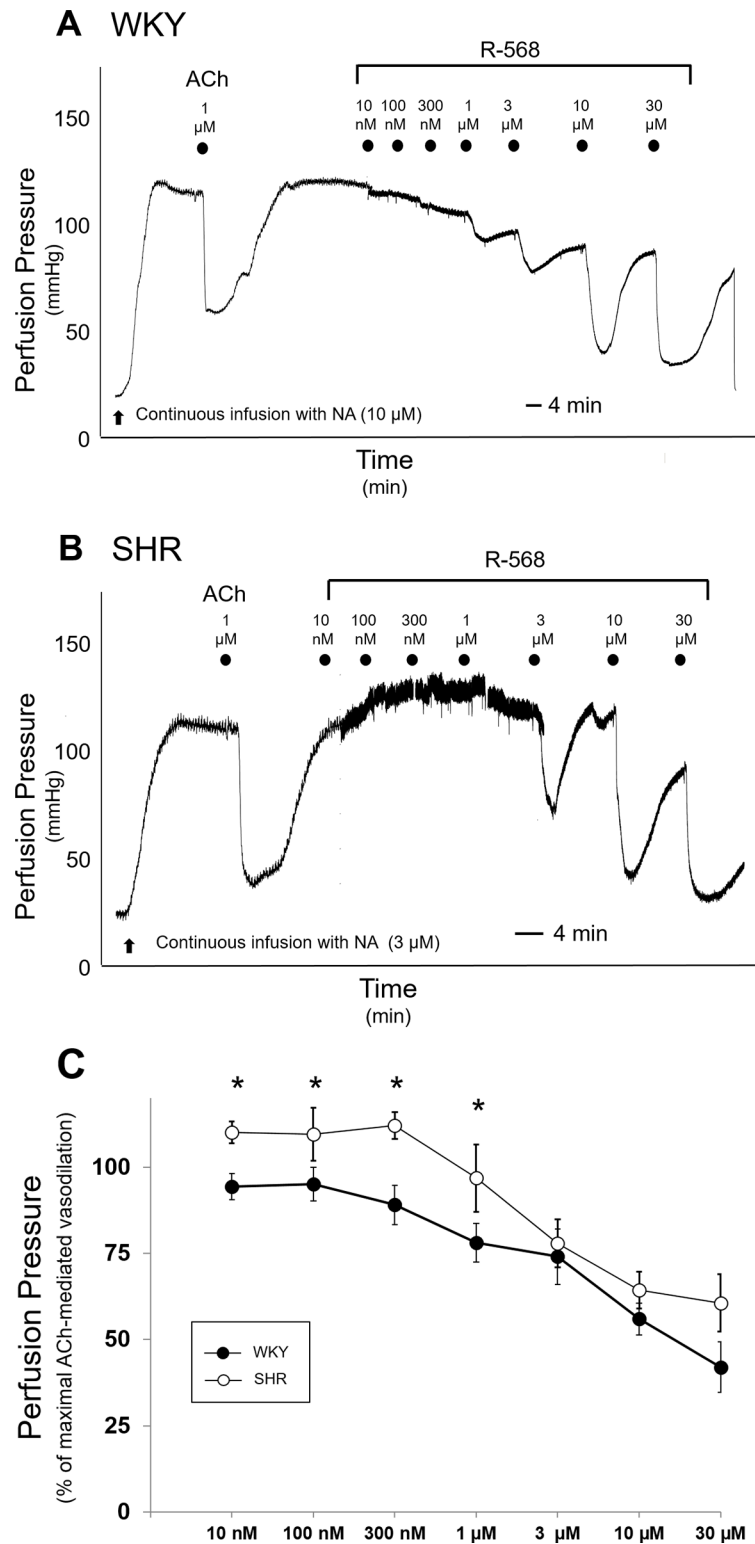


Fig 1. Vascular effects of R-568 in MVB from WKY and SHR rats. Mesenteric vascular beds (MVB) from 8-week old WKY and SHR rats were isolated and prepared as described in Methods. PP at approximately 120 mmHg was maintained by continuous infusion with NA (10 μM and 3 μM in WKY and SHR rats, respectively). (A) and (B) Representative tracings of vasodilator responses to submaximal ACh dose (1 μM) and to increasing concentrations of R-568 (10 nM–30 μM) in WKY (A) and SHR (B) are shown. Each symbol represents the start of a 4-min perfusion.

(C) Dose-response curves for R-568-induced vascular effects were obtained from MVB of WKY and SHR. Results are the mean \pm SEM of 7 (WKY) and 6 (SHR) independent experiments. Data from each curve were normalized by defining 100% as the initial steady state PP and 0% as the maximal reduction in PP obtained in WKY treated with 1 μ M ACh. * $p < 0.01$ vs respective values.

<https://doi.org/10.1371/journal.pone.0202354.g001>

(10 nM). Maximal effect was observed at 30 μ M concentration (Fig 1A) ($p < 0.01$ vs WKY PP values at initial steady state). With respect to WKY, vascular activity of R-568 on MVB from SHR was noticeably different. Indeed, as shown in Fig 1B, the vasorelaxant responses to R-568 became visible at concentrations higher than 1 μ M (3–30 μ M); concomitantly, the lower nM concentrations of R-568 (10–300 nM), including the 1 μ M concentration, evoked a slight but significant increase of PP (Fig 1C; $p < 0.05$ vs SHR PP at initial steady state).

Thus, vascular effects of R-568 in MVB from SHR did not completely overlap with effects observed in MVB from WKY (Fig 1C; $p < 0.01$ vs each respective WKY values): the high doses of R-568 induced a comparable vasodilation in both strains whereas, in the lower range of concentrations, stimulation with R-568 elicited vasodilation in WKY and vasoconstriction in SHR.

Evaluation of endothelial mediators involved in vascular effects of R-568

Nitric oxide (NO), BK_{Ca} and IK_{Ca} channels, and arachidonic acid metabolites are all involved in the control of vessel tone. To analyze the potential contribution of these vascular mediators on R-568-induced vascular effects, dose-response curves to R-568 were repeated in MVB pretreated with pharmacological inhibitors of NO synthase (L-NAME), K_{Ca} channels (CTX), and cyclo-oxygenase (INDO) (Fig 2).

In WKY, as expected, pretreatment with L-NAME (100 μ M/20 min) significantly blunted vasorelaxation to ACh. Interestingly, L-NAME pretreatment abrogated vasodilation in response to the lowest concentrations of R-568 (10–300 nM; Fig 2C; $p < 0.05$ vs CTRL curve), but did not significantly influence vasodilation induced by the highest concentrations of R-568 (Fig 2C).

To evaluate the involvement of additional endothelial factors contributing to R-568-induced vasodilation, MVB were subsequently treated with CTX (300 nM/20 min) and INDO (10 μ M/20 min) in combination with L-NAME. Under these conditions, residual ACh-mediated vasodilation was negligible (Fig 2A). When treatment with L-NAME was combined with CTX and INDO, a further inhibitory effect was observed on vasodilation induced by R-568 at 1 μ M concentration (Fig 2A and 2C; $p < 0.05$ vs CTRL curve). Conversely, in the higher micromolar range, vasodilatory effects to R-568 were not significantly reduced by the combined treatment with all inhibitors together (Fig 2A and 2C).

In SHR, similar to WKY, pretreatment with L-NAME did not significantly reduce the vasodilator responses obtained with the higher doses of R-568 (Fig 2D). The combined treatment with L-NAME, CTX and INDO was unable to block the R-568-mediated vasodilation as well (Fig 2D). Surprisingly enough, though, the small vasoconstrictor effect evoked by low doses of R-568 in SHR was completely blocked when MVB was incubated with L-NAME, alone or in combination with CTX and INDO ($p < 0.05$ vs CTRL curve) (Fig 2B and 2D).

Effect of endothelium removal and CaSR inhibition on vascular response to R-568

The behavior of R-568 in vessels pretreated with L-NAME, CTX and INDO suggests that, for the higher concentrations tested, vasodilation obtained with R-568 might not require endothelial contribution. On the other hand, at concentrations lower than 1 μ M, effects produced by

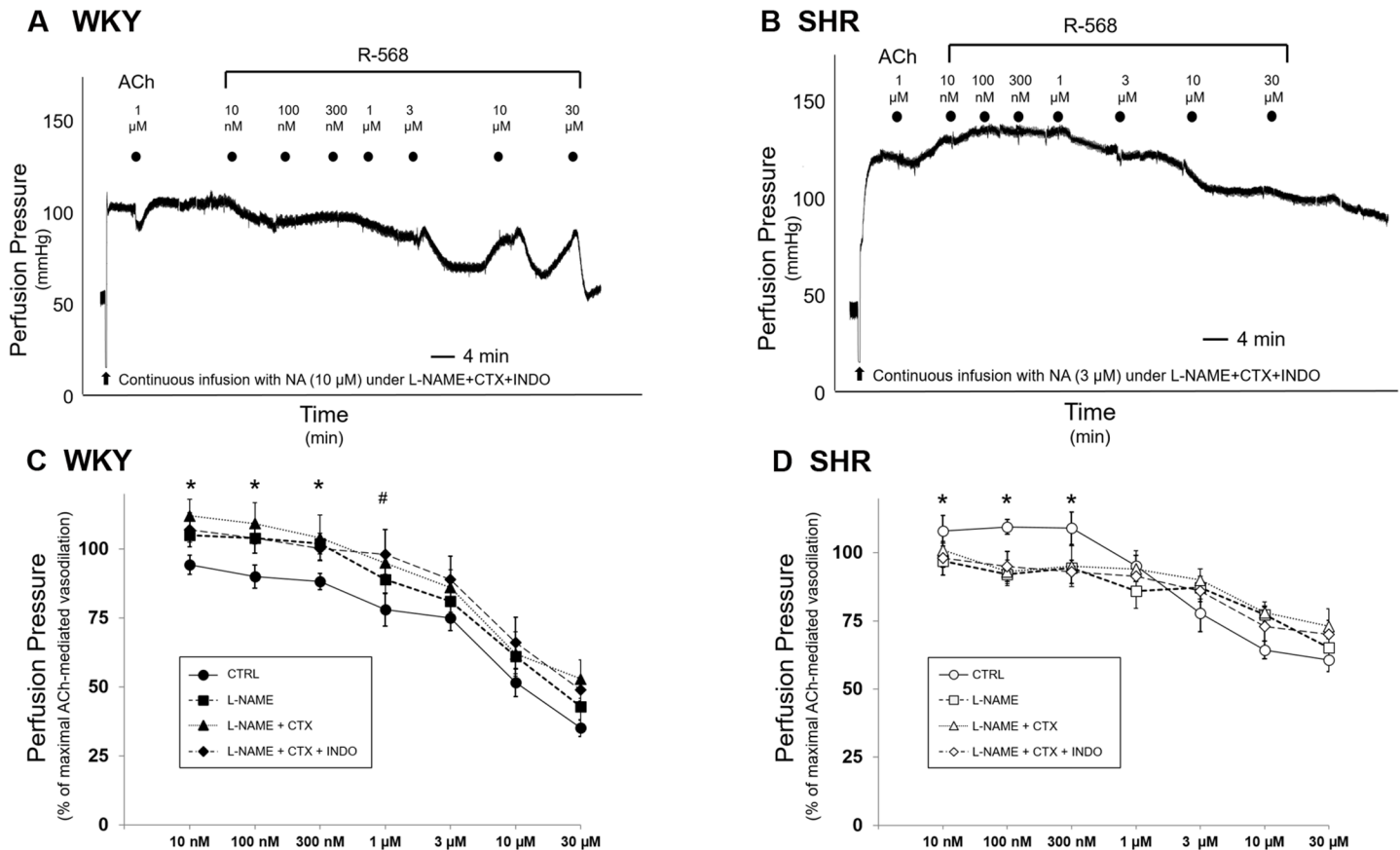


Fig 2. Evaluation of endothelial mediators involved in vascular effects of R-568 in MVB from WKY and SHR rats. (A) and (B) Representative tracings of vascular response to R-568 (10 nM–30 μM) in MVB from WKY (A) or SHR (B) pretreated with L-NAME, CTX and INDO are shown. Each symbol represents the start of a 4-min perfusion. (C) MVB isolated from 8-week old WKY (closed symbols) were stimulated with increasing concentrations of R-568 in the absence (circles) or in the presence of L-NAME (100 μM/20 min; squares), L-NAME+CTX (300 nM/20 min; triangles), L-NAME+CTX+INDO (10 μM/20 min; diamonds). Results are the mean ± SEM of 4 WKY independent experiments. (D) MVB isolated from 8-week old SHR (open symbols) were stimulated with increasing concentrations of R-568 in the absence (circles) or in the presence of L-NAME (100 μM/20 min; squares), L-NAME+CTX (300 nM/20 min; triangles), L-NAME+CTX+INDO (10 μM/20 min; diamonds). Results are the mean ± SEM of 4 WKY and 4 SHR independent experiments. **p* < 0.04 and #*p* < 0.05 vs respective CTRL curve.

<https://doi.org/10.1371/journal.pone.0202354.g002>

R-568 were quite different in MVB from WKY (where it induced vasodilation) with respect to SHR (where it propended to vasoconstriction).

To unquestionably ascertain the involvement of endothelium in R-568-mediated effects, dose-response curves to R-568 were repeated in both WKY and SHR MVB before and after endothelial removal, this last condition verified by complete lack of ACh-mediated vasodilation (data not shown). In WKY rats, consistent with results obtained under L-NAME, CTX and INDO treatment, endothelium removal inhibited R-568-mediated vasodilation in the range of 10 nM–1 μM, but did not abrogate vasodilation at R-568 concentrations higher than 1 μM (Fig 3A; *p* < 0.05 vs respective CTRL curve). Likewise, in SHR rats, endothelium removal overlapped effects observed under L-NAME pretreatment: vasodilation in response to high concentrations of R-568 remained unchanged in the presence or in the absence of endothelium (Fig 3A); once again, as described for L-NAME, vasoconstriction to lower concentrations of R-568 was not visible in vessels without endothelium (Fig 3A; *p* < 0.05 vs respective CTRL curve).

The next obligatory step was to verify the possibility that vascular effects in response to R-568 would indeed be mediated by CaSR activation. Thus, in another set of experiments, the

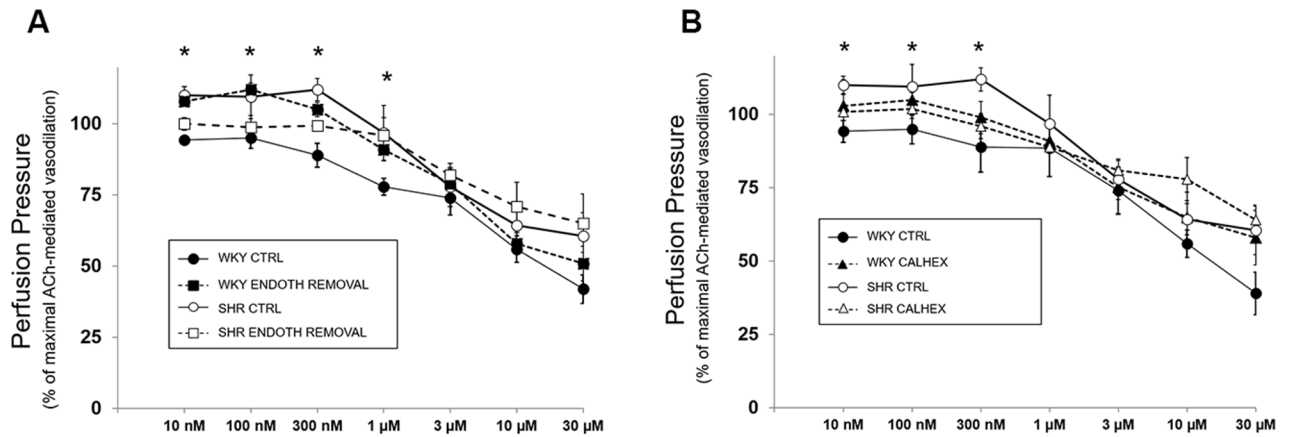


Fig 3. Effect of endothelium removal and CaSR inhibition on vascular response to R-568. (A) MVB isolated from 8-week old WKY (closed symbols) and SHR (open symbols) were stimulated with increasing concentrations of R-568 in the presence (circles) or in the absence (squares) of endothelium. Results shown are the mean \pm SEM of 3 (WKY) and 3 (SHR) independent experiments. Data from each curve were normalized as in Fig 1. (B) MVB isolated from 8-week old WKY (closed symbols) and SHR (open symbols) were stimulated with increasing concentrations of R-568 in the absence (circles) or after pretreatment with (diamonds) Calhex-231 (3 μ M/20 min). Results are the mean \pm SEM of 3 WKY and 3 SHR independent experiments. Data from each curve were normalized as in Fig 1. * p < 0.05 vs respective CTRL curve.

<https://doi.org/10.1371/journal.pone.0202354.g003>

dose-response curves to R-568 were compared in the absence and in the presence of CaSR blocker Calhex-231 (3 μ M/20 min) in MVB from WKY and SHR rats. As expected, ACh-mediated vasodilation was not modified by pretreatment with Calhex-231 (data not shown). Fig 3B demonstrates that, similar to endothelium removal, inhibition of CaSR did not significantly reduce vasodilation to high doses of R-568 in both SHR and WKY preparations. On the other hand, vasoactive effects of R-568 in the 10 nM– 1 μ M concentration range were significantly reduced under CaSR inhibition, in WKY as well as in SHR (Fig 3B). Interestingly, blockade of CaSR was able to abrogate both the vasodilation in MVB from WKY as well as the vasoconstriction observed in MVB from SHR (p < 0.05 vs respective CTRL curve).

The CaSR-independent vasodilation observed in response to high doses of R-568 in our study is consistent with results obtained with other calcimimetics: for example, the arterial relaxation induced by both cinacalcet and calindol was not substantially blocked by the CaSR inhibitor Calhex 231 in rat mesenteric vessels [16], suggesting the involvement of alternative/additional mechanisms. Similarly, at doses exceeding 70 μ M, infusion of both R-568 and its enantiomer S-568 in rat mesenteric and renal arteries has been shown to equally increase blood flow [22]. Given the largely stereospecific activity of calcimimetics, the Authors concluded that the comparable vasodilation obtained with both R-568 and S-568 was unlikely mediated by CaSR activation [22]. One alternative explanation for the off-target effects of calcimimetics is based on their chemical structure: since these molecules are phenylalkylamine derivatives, their ability to modulate vascular relaxation and blood pressure has been mainly ascribed to potential interaction on L-type Ca^{2+} channels [16, 33]. Although, at present we cannot provide any direct evidence of an inhibitory effect of R-568 on L-type Ca^{2+} channels, this may help to comprehend why, in our study, vasodilation obtained with high doses of R-568 did not change in the absence or presence of endothelium, and was not significantly different between SHR and WKY.

Similarly, we cannot exclude that hyperpolarization might have a role in mediating R-568 comparable vasodilator effects in SHR and WKY, in the high range of concentrations tested: treatment with CTX, which blocks K_{Ca} channels in a nonselective fashion [37], might not affect small conductance Ca^{2+} -activated potassium channel (SK_{Ca}), voltage-gated potassium channel $Kv1.3$, or KATP channels. Thus, especially in MVB, where hyperpolarization contributes to the

vasodilator response of several agonists [38–41], it remains possible that part of the off-target vasodilation by R-568 might involve hyperpolarization-mediated mechanisms.

In contrast to the result obtained at high R-568 concentration, the vasodilatory effect observed at low doses of R-568 in MVB from WKY was mediated by CaSR and dependent on endothelial factors, in agreement with other studies demonstrating the necessary role of CaSR and endothelium in the hypotensive effects of calcimimetics [12, 23, 42]. Conversely, in MVB from SHR rats, the lowest concentrations of R-568 evoked a dose-dependent vasoconstrictive effect that was both endothelium- and CaSR-mediated. This was somewhat surprising because, if any, the impaired endothelial function in vessels from SHR was expected to reduce the vasodilatory ability of R-568. Although puzzling, these findings should take into account the genetic background of SHR that may affect endothelial production of vasoactive mediators, resulting in abnormal/unbalanced vascular responsiveness [43]. For example, uncoupling of eNOS is known to generate reactive oxygen species (ROS) instead of NO [44, 45]. In this case, phosphorylation and activation of endothelial eNOS by R-568 may increase ROS levels and elicit subsequent vasoconstriction. Preliminary immunohistochemical experiments in our study suggest that levels of nitrotyrosine (indicating peroxynitrite production) in response to R-568 were higher in aortas isolated from SHR when compared with samples from WKY; on the same line, in immunofluorescence experiments, nuclear red fluorescence to dihydroethidium DHE (indicative of O^{2-} production) in response to R-568 was higher in aortic rings from SHR with respect to aortic rings from WKY (data not shown). Thus, in vessels from SHR, L-NAME pre-treatment or endothelial removal might mitigate the vasoconstriction elicited by R-568-mediated stimulation of uncoupled eNOS. This hypothesis is supported by data showing that treatment with the ROS scavenger Tempol was able to block the age-related development of high blood pressure in hypertensive rats [46]. On the same line, treatment with the antioxidant N-acetylcysteine (NAC) has been shown to effectively reduce blood pressure in young (5 weeks of age) SHR rats [47], underscoring the role played by ROS in the early stages of hypertension development. Alternatively, activation of CaSR might be involved in several signaling cascades related to production of either vasoconstrictor or vasodilator factors. Indeed, in the vascular district, CaSR activation has been associated with vasoconstriction and signalling via mitogen-activated protein kinases [48–50]. Thus, it is plausible that in vessels from SHR stimulation with R-568 may unmask vasoconstrictive effects not adequately counterbalanced by endothelial impaired production of NO. Although our present findings are too preliminary to exclude or confirm any hypothesis, these observations underline the specific behavior of R-568 under hypertensive conditions.

Activation of signaling pathways by R-568 in MVB from WKY and SHR

Taken together our functional studies suggest that: 1. for concentrations higher than 1 μ M, R-568 is able to produce a vasodilator effect that does not differ between WKY and SHR rats, it is unlikely mediated by CaSR activation, and does not depend on NO production and/or other endothelial factors; 2. conversely, in the lower range (10 nM - 1 μ M) of concentrations, both endothelium and CaSR are required for R-568-dependent vascular activities, which translate in vasodilation in WKY and vasoconstriction in SHR, respectively. Based on the different consequences of eNOS activation under healthy and pathological conditions discussed above, we evaluated the ability of R-568 to increase phosphorylation (activation) of eNOS in the whole MVB homogenates. Moreover, since phosphorylation of eNOS by the upstream kinase Akt is an important mechanism regulating activation of eNOS in response to several ligands, the phosphorylation levels of eNOS and Akt were concomitantly measured in both WKY and SHR preparations. As shown in Fig 4 levels of phospho-eNOS and phospho-Akt increased

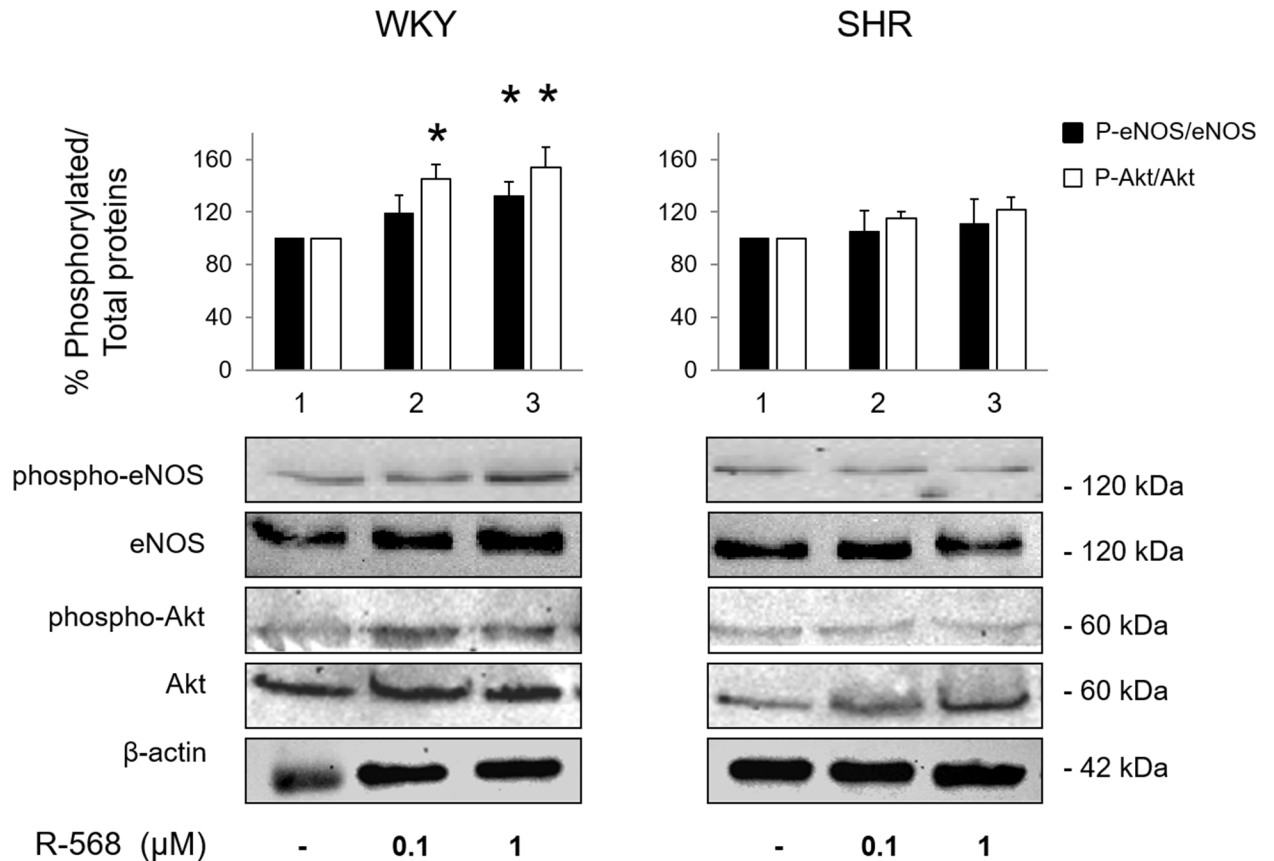


Fig 4. Evaluation of signaling pathways activated by R-568 in MVB from WKY and SHR. MVB homogenates from experiments described in Fig 1 were subjected to immunoblotting for total and phosphorylated forms of Akt (phospho-Akt^{Ser473}), and eNOS (phospho-eNOS^{Ser1177}). Total β-actin levels were used as loading control. A representative set of immunoblots is shown for experiments that were repeated independently 3 times. Each bar represents the mean ± SEM of densitometric analysis for phosphorylated proteins normalized to their respective total forms. *p < 0.05 vs respective basal.

<https://doi.org/10.1371/journal.pone.0202354.g004>

proportionally to concentrations of R-568 administered, with a quantifiable effect on Akt starting at 100 nM (p < 0.05 vs respective unstimulated conditions). Thus, in normotensive WKY, R-568-mediated vasodilation was associated with an Akt-associated activation of eNOS. These findings corroborate literature data demonstrating that stimulation of CaSR induces eNOS activation and NO release, which in turn produces relaxation by regulating extracellular Ca²⁺ in mesenteric arteries from mice [19], and involves the heteromeric transient receptors TRPV4-TRPC1 channels in mesenteric arteries from rabbits [14].

Conversely, in preparations from SHR, no significant increase in phosphorylated levels of Akt and eNOS was detected in MVB stimulated with the same R-568 concentrations (Fig 4), suggesting the impairment of Akt/eNOS signaling activation in response to R-568. Therefore, differences in molecular mechanisms activated by R-568 in whole vessels from WKY and SHR support the diverging functional effects observed in these two strains.

CaSR expression in WKY- and SHR-vSMCs

Endothelial cells constitute only a very small fraction of the total protein in a whole vessel. This, together with the concept that the phenotypic modulation of VSMCs is known to play a pivotal role in hypertension-induced vascular changes [51], advocate for our subsequent

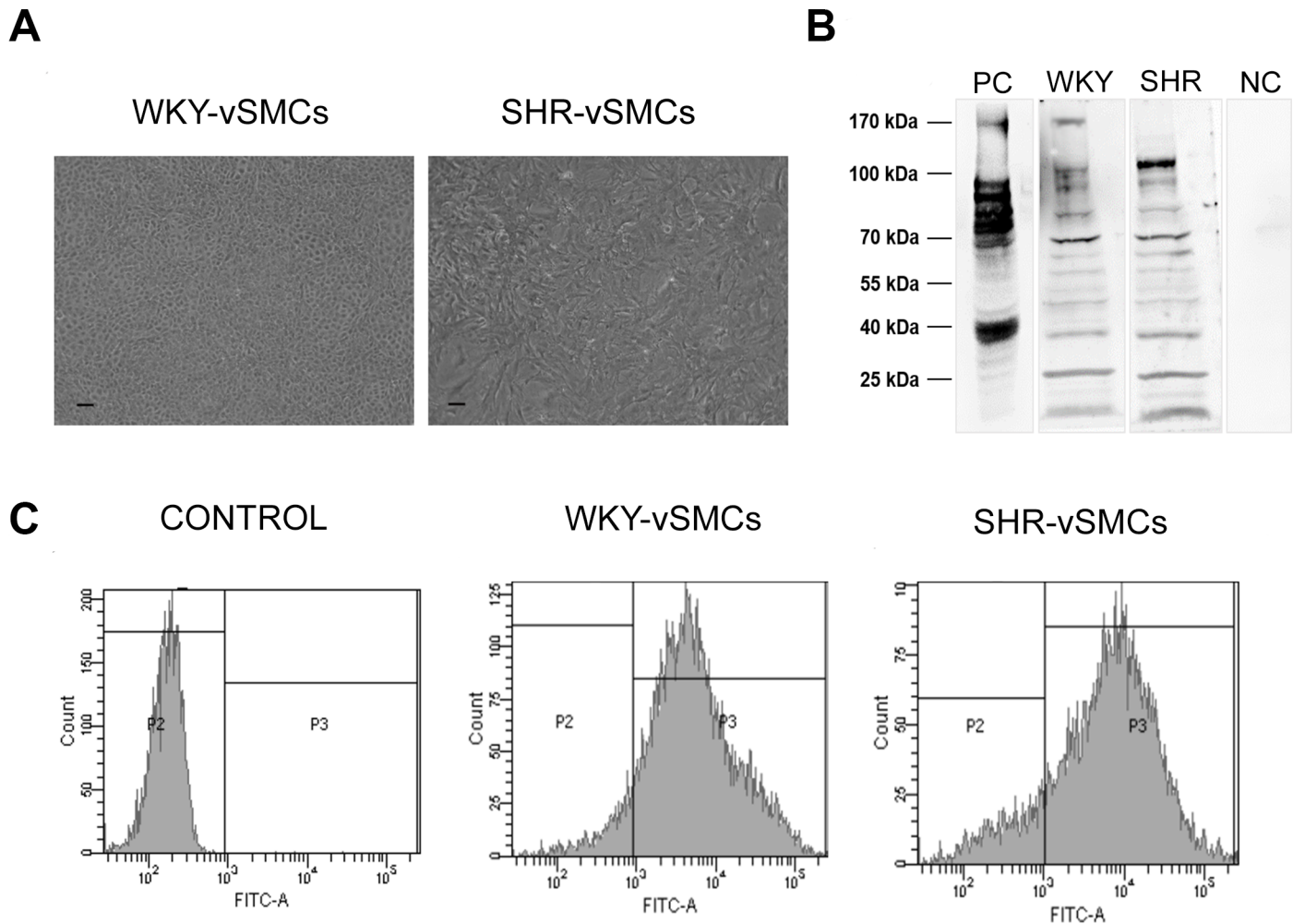


Fig 5. CaSR expression in WKY- and SHR-vSMCs. (A) Representative morphometric aspect of confluent vSMC cultures from normotensive rats (WKY) and spontaneously hypertensive rats (SHR) (magnification x 10; scale bar: 300 μ m). The cells were plated and morphologically examined three different times in the same experimental conditions. (B) Representative pattern of electrophoretic bands (170–100, 70–55 and 40–25 kDa) that results from immunoblotting analysis of CaSR expression in WKY- and SHR-vSMCs lysates and its negative (NC, HEK293 empty vector transfected control cell lysate) and positive (PC, HEK293 CaSR transiently transfected cell lysate) controls. (C) Representative images of α -SMA flow cytometry analysis in WKY- and SHR-vSMCs and secondary antibody alone (control).

<https://doi.org/10.1371/journal.pone.0202354.g005>

studies investigating the role of vSMCs on R-568-mediated effects. The presence of CaSR on vSMCs is still controversial [49, 50, 52, 53], with some studies reporting the expression of CaSR in human and animal models [5, 6, 48, 49] while some others have failed to detect the cognate CaSR in vSMCs [52]. Furthermore, the discovery and cloning of a novel human family of C GPCR, with a significant homology to the human CaSR, suggest the presence of a distinct calcium sensing receptor termed GPRC6A and its possible activation by high concentrations of extracellular calcium and calcimimetics [54, 55].

Here, following the isolation of vSMCs from the thoracic aorta of WKY and SHR rats, we first confirmed their phenotype by evaluating the contractile marker α -SMA that resulted \geq 90% for both vSMCs strains (Fig 5C). Then, we compared the morphological characteristics of cell cultures from WKY and SHR. As shown in Fig 5A, the WKY-vSMCs showed a “hill and valley” morphology typically observed in cultured vSMCs [56]. SHR-vSMCs, on the contrary, showed an atypical morphology, suggestive of altered mechanisms controlling contact

inhibition. To ascertain if changes in vSMCs morphology might also reflect a differential expression of CaSR protein between WKY- and SHR-vSMCs, a western blot analysis was performed in cell lysates under reducing conditions. As shown in Fig 5B, and consistent with our and other previous reports on HUVECs [17, 57] we observed a pattern of electrophoretic bands (170–100, 70–55 and 40–25 kDa) indicative of CaSR protein. The different molecular weight is depending upon the extent of proteins glycosylation and the presence of its monomeric or multimeric form [58, 59].

On this respect, it is important to specify that the functional CaSR resides on the cell surface in the dimeric form, while the intracellular pool of CaSR has been considered a rapidly mobilizable “storage form” [60, 61] with a potential role in the modulation of intracellular activities triggered by changes in endoplasmic reticulum Ca^{2+} and/or glutathione [61].

Interestingly, this pattern of bands reveal the mature and biologically active dimeric form of the receptor (170 kDa) in the WKY-vSMCs, whereas in the SHR-vSMCs the monomeric CaSR protein (70 kDa) resulted the most expressed (Fig 5B).

Effect of R-568 on Akt activation and NO production in vSMCs from WKY and SHR rats

The possibility that, besides endothelium, CaSR expressed on vSMCs may also participate to vascular activities of R-568 was then evaluated. As shown in Fig 6A, after two minutes of stimulation, R-568 (1 μ M) induced a significant increase in Akt phosphorylation levels ($p < 0.02$ vs respective unstimulated conditions) on WKY-vSMCs while no significant activation of Akt signaling was found on SHR-vSMCs. Pre-incubation with CaSR inhibitor Calhex (1 μ M) completely reverted the R-568-dependent phosphorylation of Akt in WKY-vSMCs ($p < 0.05$ vs respective R-568 alone).

Similar to endothelial cells, activation of Akt in vSMCs has been linked to activation of eNOS, whose expression has previously been unequivocally documented in vSMCs from mice [62] as well as from humans, under both basal and pathological conditions [63, 64]. Thus, NOS activity in response to R-568 was evaluated in WKY- and SHR-vSMCs by a conventional method indirectly measuring the conversion of the substrate L-[3H]-arginine into L-[3H]-citrulline [28, 31]. As shown in Fig 6B, vSMCs stimulation with R-568 (1 μ M) was associated to a significant production of NO in WKY cells ($p < 0.02$ vs respective unstimulated conditions) that reverted to baseline levels when cells were concomitantly treated with the CaSR inhibitor Calhex 231 (1 μ M) ($p < 0.01$ vs respective R-568 alone).

Similar to Akt phosphorylation levels, no significant increase in NO production was measured in vSMCs from SHR. Collectively, these findings support the hypothesis that the absence of the CaSR active dimeric form in vSMCs from SHR rats may contribute to explain the impaired vasorelaxant effect observed in response to R-568 in MVB from SHR, with respect to WKY [33].

Conclusions

Taken together, these findings highlight new mechanisms of action of calcimimetics in modulating vascular tone, both in normal and pathological conditions such as hypertension. In isolated vessels from hypertensive compared to normotensive rats, the calcimimetic R-568 exerts different dose-dependent vasodilatory effects. Particularly, at the lowest R-568 concentrations used, its effect in isolated vessels results opposite: vasodilatory in WKY and vasoconstrictor in SHR. In both cases dependent on the CaSR and the endothelium itself, while the involvement of vSMCs in the R-568 CaSR-dependent vasodilatation might be assumed only for WKY rats.

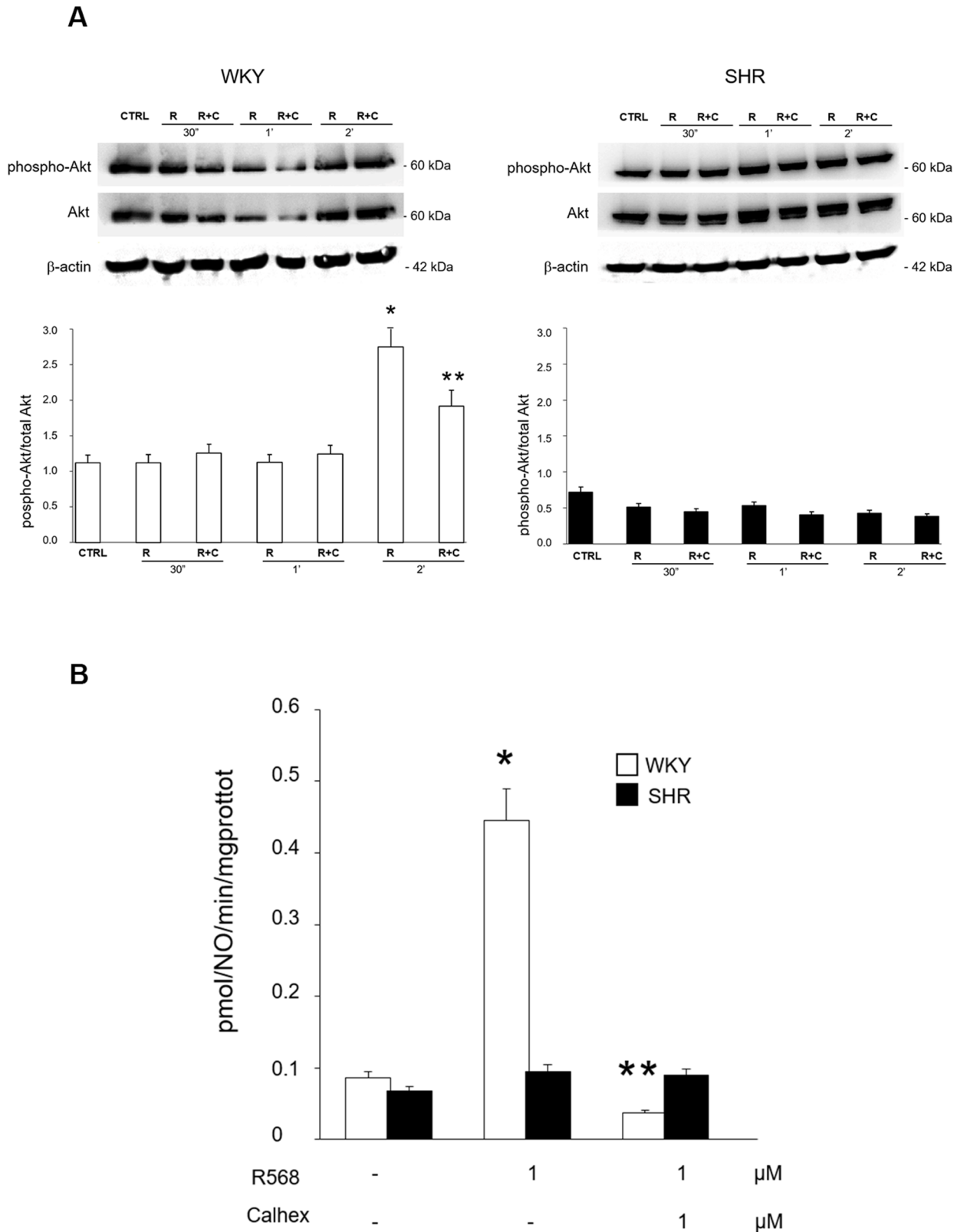


Fig 6. Effect of R-568 on Akt activation and NO production in vSMCs from WKY and SHR rats. (A) vSMCs stimulated with 1 μM of R568 (R) at different times (30 seconds, 1 minute, 2 minutes) in the presence or absence of Calhex 231 (C, 1 μM) were subjected to immunoblotting for total and phosphorylated forms of Akt (phospho-Akt^{Ser473}). Total β-actin levels were used as loading control. A representative set of immunoblots

is shown for experiments that were repeated independently 3 times. Each bar represents the mean \pm SD of densitometric analysis for phosphorylated proteins normalized to their respective total forms. * $p < 0.02$ vs respective basal (CTRL), ** $p < 0.05$ R+C vs respective R. (B) NO production determined by conversion of L-[3H]-arginine into L-[3H]-citrulline in vSMCs stimulated with 1 μ M of R568 in the presence or absence of Calhex 231 (1 μ M), data are expressed as pmol/NO/min/mgprotot (picomoles /Nitric Oxide/ minutes/ milligrams protein total). Each bar represents the mean \pm SD of 3 independent experiments. * $p < 0.02$ R568 vs respective basal, ** $p < 0.01$ R568+Calhex vs respective R568.

<https://doi.org/10.1371/journal.pone.0202354.g006>

Although further studies are necessary to thoroughly understand these effects, our study suggest that calcimimetics might be useful to regulate vascular tone and this could represent the beginning of a new therapeutic approach.

Author Contributions

Conceptualization: Monica Montagnani, Assunta Pandolfi.

Data curation: Maria Assunta Potenza, Sara Di Silvestre, Nadia Di Pietrantonio, Pamela Di Tomo, Domitilla Mandatori, Carola Palmerini, Monica Montagnani.

Formal analysis: Maria Assunta Potenza, Domitilla Mandatori.

Investigation: Natalia Di Pietro, Maria Assunta Potenza, Sara Di Silvestre, Nadia Di Pietrantonio, Carola Palmerini.

Methodology: Maria Assunta Potenza, Sara Di Silvestre, Francesco Addabbo, Nadia Di Pietrantonio, Pamela Di Tomo, Caterina Pipino, Carola Palmerini, Paola Failli, Mario Bonomini.

Resources: Paola Failli, Mario Bonomini.

Software: Caterina Pipino.

Supervision: Assunta Pandolfi.

Validation: Domitilla Mandatori.

Visualization: Mario Bonomini.

Writing – original draft: Natalia Di Pietro, Monica Montagnani, Assunta Pandolfi.

Writing – review & editing: Natalia Di Pietro, Monica Montagnani.

References

1. Brown EM. Role of the calcium-sensing receptor in extracellular calcium homeostasis. Best practice & research Clinical endocrinology & metabolism. 2013; 27(3):333–43.
2. Tfelt-Hansen J, Brown EM. The calcium-sensing receptor in normal physiology and pathophysiology: a review. Critical reviews in clinical laboratory sciences. 2005; 42(1):35–70. PMID: [15697170](https://pubmed.ncbi.nlm.nih.gov/15697170/)
3. Smajilovic S, Yano S, Jabbari R, Tfelt-Hansen J. The calcium-sensing receptor and calcimimetics in blood pressure modulation. British journal of pharmacology. 2011; 164(3):884–93. <https://doi.org/10.1111/j.1476-5381.2011.01317.x> PMID: [21410453](https://pubmed.ncbi.nlm.nih.gov/21410453/)
4. Smajilovic S, Tfelt-Hansen J. Novel role of the calcium-sensing receptor in blood pressure modulation. Hypertension. 2008; 52(6):994–1000. <https://doi.org/10.1161/HYPERTENSIONAHA.108.117689> PMID: [18955662](https://pubmed.ncbi.nlm.nih.gov/18955662/)
5. Schepelmann M, Yarova PL, Lopez-Fernandez I, Davies TS, Brennan SC, Edwards PJ, et al. The vascular Ca²⁺-sensing receptor regulates blood vessel tone and blood pressure. American journal of physiology Cell physiology. 2016; 310(3):C193–204. <https://doi.org/10.1152/ajpcell.00248.2015> PMID: [26538090](https://pubmed.ncbi.nlm.nih.gov/26538090/)
6. Henaut L, Boudot C, Massy ZA, Lopez-Fernandez I, Dupont S, Mary A, et al. Calcimimetics increase CaSR expression and reduce mineralization in vascular smooth muscle cells: mechanisms of action. Cardiovascular research. 2014; 101(2):256–65. <https://doi.org/10.1093/cvr/cvt249> PMID: [24217682](https://pubmed.ncbi.nlm.nih.gov/24217682/)

7. Koleganova N, Piecha G, Ritz E, Schmitt CP, Gross ML. A calcimimetic (R-568), but not calcitriol, prevents vascular remodeling in uremia. *Kidney international*. 2009; 75(1):60–71. <https://doi.org/10.1038/ki.2008.490> PMID: 19092814
8. Al-Aly Z. The new role of calcimimetics as vasculotropic agents. *Kidney international*. 2009; 75(1):9–12. <https://doi.org/10.1038/ki.2008.563> PMID: 19092812
9. Zhao Y, Vanhoutte PM, Leung SW. Vascular nitric oxide: Beyond eNOS. *Journal of pharmacological sciences*. 2015; 129(2):83–94. <https://doi.org/10.1016/j.jphs.2015.09.002> PMID: 26499181
10. Ziegelstein RC, Xiong Y, He C, Hu Q. Expression of a functional extracellular calcium-sensing receptor in human aortic endothelial cells. *Biochemical and biophysical research communications*. 2006; 342(1):153–63. <https://doi.org/10.1016/j.bbrc.2006.01.135> PMID: 16472767
11. Loot AE, Pierson I, Syzonenko T, Elghezawy A, Randriamboavonjy V, Zivkovic A, et al. Ca²⁺-sensing receptor cleavage by calpain partially accounts for altered vascular reactivity in mice fed a high-fat diet. *Journal of cardiovascular pharmacology*. 2013; 61(6):528–35. <https://doi.org/10.1097/FJC.0b013e31828d0fa3> PMID: 23429586
12. Ohanian J, Gattfield KM, Ward DT, Ohanian V. Evidence for a functional calcium-sensing receptor that modulates myogenic tone in rat subcutaneous small arteries. *American journal of physiology Heart and circulatory physiology*. 2005; 288(4):H1756–62. <https://doi.org/10.1152/ajpheart.00739.2004> PMID: 15576443
13. Lopez-Fernandez I, Schepelmann M, Brennan SC, Yarova PL, Riccardi D. The calcium-sensing receptor: one of a kind. *Experimental physiology*. 2015; 100(12):1392–9. <https://doi.org/10.1113/EP085137> PMID: 26105576
14. Greenberg HZE, Carlton-Carew SRE, Khan DM, Zargaran AK, Jahan KS, Vanessa Ho WS, et al. Heteromeric TRPV4/TRPC1 channels mediate calcium-sensing receptor-induced nitric oxide production and vasorelaxation in rabbit mesenteric arteries. *Vascular pharmacology*. 2017; 96–98:53–62. <https://doi.org/10.1016/j.vph.2017.08.005> PMID: 28867591
15. Smajilovic S, Sheykhzade M, Holmegard HN, Haunso S, Tfelt-Hansen J. Calcimimetic, AMG 073, induces relaxation on isolated rat aorta. *Vascular pharmacology*. 2007; 47(4):222–8. <https://doi.org/10.1016/j.vph.2007.06.010> PMID: 17690018
16. Thakore P, Ho WS. Vascular actions of calcimimetics: role of Ca(2+)-sensing receptors versus Ca(2+) (+) influx through L-type Ca(2+) channels. *British journal of pharmacology*. 2011; 162(3):749–62. <https://doi.org/10.1111/j.1476-5381.2010.01079.x> PMID: 20958288
17. Bonomini M, Giardinelli A, Morabito C, Di Silvestre S, Di Cesare M, Di Pietro N, et al. Calcimimetic R-568 and its enantiomer S-568 increase nitric oxide release in human endothelial cells. *PloS one*. 2012; 7(1):e30682. <https://doi.org/10.1371/journal.pone.0030682> PMID: 22295103
18. Greenberg HZE, Jahan KS, Shi J, Vanessa Ho WS, Albert AP. The calcilytics Calhex-231 and NPS 2143 and the calcimimetic Calindol reduce vascular reactivity via inhibition of voltage-gated Ca(2+) channels. *European journal of pharmacology*. 2016; 791:659–68. <https://doi.org/10.1016/j.ejphar.2016.10.008> PMID: 27725162
19. Awumey EM, Bridges LE, Williams CL, Diz DI. Nitric-oxide synthase knockout modulates Ca(2+) (+)-sensing receptor expression and signaling in mouse mesenteric arteries. *The Journal of pharmacology and experimental therapeutics*. 2013; 346(1):38–47. <https://doi.org/10.1124/jpet.113.205534> PMID: 23639802
20. Dora KA, Gallagher NT, McNeish A, Garland CJ. Modulation of endothelial cell KCa3.1 channels during endothelium-derived hyperpolarizing factor signaling in mesenteric resistance arteries. *Circulation research*. 2008; 102(10):1247–55. <https://doi.org/10.1161/CIRCRESAHA.108.172379> PMID: 18403729
21. Filopanti M, Corbetta S, Barbieri AM, Spada A. Pharmacology of the calcium sensing receptor. *Clinical cases in mineral and bone metabolism: the official journal of the Italian Society of Osteoporosis, Mineral Metabolism, and Skeletal Diseases*. 2013; 10(3):162–5.
22. Nakagawa K, Parekh N, Koleganova N, Ritz E, Schaefer F, Schmitt CP. Acute cardiovascular effects of the calcimimetic R-568 and its enantiomer S-568 in rats. *Pediatric nephrology*. 2009; 24(7):1385–9. <https://doi.org/10.1007/s00467-009-1153-6> PMID: 19280225
23. Rybczynska A, Boblewski K, Lehmann A, Orlewska C, Foks H. Pharmacological activity of calcimimetic NPS R-568 administered intravenously in rats: dose dependency. *Pharmacological reports: PR*. 2006; 58(4):533–9. PMID: 16963800
24. Rybczynska A, Boblewski K, Lehmann A, Orlewska C, Foks H, Drewnowska K, et al. Calcimimetic NPS R-568 induces hypotensive effect in spontaneously hypertensive rats. *American journal of hypertension*. 2005; 18(3):364–71. <https://doi.org/10.1016/j.amjhyper.2004.10.019> PMID: 15797655
25. Ogata H, Ritz E, Odoni G, Amann K, Orth SR. Beneficial effects of calcimimetics on progression of renal failure and cardiovascular risk factors. *Journal of the American Society of Nephrology: JASN*. 2003; 14(4):959–67. PMID: 12660330

26. Potenza MA, Marasciulo FL, Tarquinio M, Quon MJ, Montagnani M. Treatment of spontaneously hypertensive rats with rosiglitazone and/or enalapril restores balance between vasodilator and vasoconstrictor actions of insulin with simultaneous improvement in hypertension and insulin resistance. *Diabetes*. 2006; 55(12):3594–603. <https://doi.org/10.2337/db06-0667> PMID: 17130509
27. Potenza MA, Marasciulo FL, Chieppa DM, Brigiani GS, Formoso G, Quon MJ, et al. Insulin resistance in spontaneously hypertensive rats is associated with endothelial dysfunction characterized by imbalance between NO and ET-1 production. *American journal of physiology Heart and circulatory physiology*. 2005; 289(2):H813–22. <https://doi.org/10.1152/ajpheart.00092.2005> PMID: 15792994
28. Di Pietro N, Di Tomo P, Di Silvestre S, Giardinelli A, Pipino C, Morabito C, et al. Increased iNOS activity in vascular smooth muscle cells from diabetic rats: potential role of Ca(2+)/calmodulin-dependent protein kinase II delta 2 (CaMKIIdelta(2)). *Atherosclerosis*. 2013; 226(1):88–94. <https://doi.org/10.1016/j.atherosclerosis.2012.10.062> PMID: 23177014
29. Failli P, Nistri S, Mazzetti L, Chiappini L, Bani D. Effects of relaxin on vascular smooth muscle and endothelial cells in normotensive and hypertensive rats. *Annals of the New York Academy of Sciences*. 2005; 1041:311–3. <https://doi.org/10.1196/annals.1282.048> PMID: 15956725
30. Di Cesare Mannelli L, Nistri S, Mazzetti L, Bani D, Feil R, Failli P. Altered nitric oxide calcium responsiveness of aortic smooth muscle cells in spontaneously hypertensive rats depends on low expression of cyclic guanosine monophosphate-dependent protein kinase type I. *Journal of hypertension*. 2009; 27(6):1258–67. <https://doi.org/10.1097/HJH.0b013e328329d18c> PMID: 19307986
31. Bonomini M, Pandolfi A, Di Pietro N, Sirolli V, Giardinelli A, Consoli A, et al. Adherence of uremic erythrocytes to vascular endothelium decreases endothelial nitric oxide synthase expression. *Kidney international*. 2005; 67(5):1899–906. <https://doi.org/10.1111/j.1523-1755.2005.00288.x> PMID: 15840037
32. Potenza MA, Botrugno OA, De Salvia MA, Lerro G, Nacci C, Marasciulo FL, et al. Endothelial COX-1 and -2 differentially affect reactivity of MVB in portal hypertensive rats. *Am J Physiol Gastrointest Liver Physiol*. 2002; 283(3):G587–94. <https://doi.org/10.1152/ajpgi.00391.2001> PMID: 12181171
33. Pinterova M, Kunes J, Zicha J. Altered neural and vascular mechanisms in hypertension. *Physiological research*. 2011; 60(3):381–402. PMID: 21615201
34. Bernatova I, Conde MV, Kopincova J, Gonzalez MC, Puzserova A, Arribas SM. Endothelial dysfunction in spontaneously hypertensive rats: focus on methodological aspects. *Journal of hypertension Supplement: official journal of the International Society of Hypertension*. 2009; 27(6):S27–31.
35. Montagnani M, Potenza MA, Rinaldi R, Mansi G, Nacci C, Serio M, et al. Functional characterization of endothelin receptors in hypertensive resistance vessels. *Journal of hypertension*. 1999; 17(1):45–52. PMID: 10100093
36. Potenza MA, Gagliardi S, De Benedictis L, Zigrino A, Tiravanti E, Colantuono G, et al. Treatment of spontaneously hypertensive rats with rosiglitazone ameliorates cardiovascular pathophysiology via antioxidant mechanisms in the vasculature. *American journal of physiology Endocrinology and metabolism*. 2009; 297(3):E685–94. <https://doi.org/10.1152/ajpendo.00291.2009> PMID: 19531637
37. Restrepo-Angulo I, De Vizcaya-Ruiz A, Camacho J. Ion channels in toxicology. *Journal of applied toxicology: JAT*. 2010; 30(6):497–512. <https://doi.org/10.1002/jat.1556> PMID: 20583319
38. Parsons SJ, Hill A, Waldron GJ, Plane F, Garland CJ. The relative importance of nitric oxide and nitric oxide-independent mechanisms in acetylcholine-evoked dilatation of the rat mesenteric bed. *British journal of pharmacology*. 1994; 113(4):1275–80. PMID: 7534183
39. Eichler I, Wibawa J, Grgic I, Knorr A, Brakemeier S, Pries AR, et al. Selective blockade of endothelial Ca²⁺-activated small- and intermediate-conductance K⁺-channels suppresses EDHF-mediated vasodilation. *British journal of pharmacology*. 2003; 138(4):594–601. <https://doi.org/10.1038/sj.bjp.0705075> PMID: 12598413
40. Hilgers RH, Todd J Jr., Webb RC. Regional heterogeneity in acetylcholine-induced relaxation in rat vascular bed: role of calcium-activated K⁺ channels. *American journal of physiology Heart and circulatory physiology*. 2006; 291(1):H216–22. <https://doi.org/10.1152/ajpheart.01383.2005> PMID: 16473954
41. Pimentel AM, Costa CA, Carvalho LC, Brandao RM, Rangel BM, Tano T, et al. The role of NO-cGMP pathway and potassium channels on the relaxation induced by clonidine in the rat mesenteric arterial bed. *Vascular pharmacology*. 2007; 46(5):353–9. <https://doi.org/10.1016/j.vph.2006.12.003> PMID: 17258511
42. Weston AH, Absi M, Ward DT, Ohanian J, Dodd RH, Dauban P, et al. Evidence in favor of a calcium-sensing receptor in arterial endothelial cells: studies with calindol and Calhex 231. *Circulation research*. 2005; 97(4):391–8. <https://doi.org/10.1161/01.RES.0000178787.59594.a0> PMID: 16037572
43. Field FP, Soltis EE. Vascular reactivity in the spontaneously hypertensive rat. Effect of high pressure stress and extracellular calcium. *Hypertension*. 1985; 7(2):228–35. PMID: 3980069
44. Gonzalez J, Valls N, Brito R, Rodrigo R. Essential hypertension and oxidative stress: New insights. *World journal of cardiology*. 2014; 6(6):353–66. <https://doi.org/10.4330/wjc.v6.i6.353> PMID: 24976907

45. Forstermann U, Xia N, Li H. Roles of Vascular Oxidative Stress and Nitric Oxide in the Pathogenesis of Atherosclerosis. *Circulation research*. 2017; 120(4):713–35. <https://doi.org/10.1161/CIRCRESAHA.116.309326> PMID: 28209797
46. Nabha L, Garbern JC, Buller CL, Charpie JR. Vascular oxidative stress precedes high blood pressure in spontaneously hypertensive rats. *Clinical and experimental hypertension*. 2005; 27(1):71–82. PMID: 15773231
47. Pechanova O, Zicha J, Kojsova S, Dobesova Z, Jendekova L, Kunes J. Effect of chronic N-acetylcysteine treatment on the development of spontaneous hypertension. *Clinical science*. 2006; 110(2):235–42. <https://doi.org/10.1042/CS20050227> PMID: 16238546
48. Wonneberger K, Scofield MA, Wangemann P. Evidence for a calcium-sensing receptor in the vascular smooth muscle cells of the spiral modiolar artery. *The Journal of membrane biology*. 2000; 175(3):203–12. PMID: 10833530
49. Smajilovic S, Hansen JL, Christoffersen TE, Lewin E, Sheikh SP, Terwilliger EF, et al. Extracellular calcium sensing in rat aortic vascular smooth muscle cells. *Biochemical and biophysical research communications*. 2006; 348(4):1215–23. <https://doi.org/10.1016/j.bbrc.2006.07.192> PMID: 16919596
50. McNeil SE, Hobson SA, Nipper V, Rodland KD. Functional calcium-sensing receptors in rat fibroblasts are required for activation of SRC kinase and mitogen-activated protein kinase in response to extracellular calcium. *The Journal of biological chemistry*. 1998; 273(2):1114–20. PMID: 9422777
51. Hayashi K, Naiki T. Adaptation and remodeling of vascular wall; biomechanical response to hypertension. *Journal of the mechanical behavior of biomedical materials*. 2009; 2(1):3–19. <https://doi.org/10.1016/j.jmbbm.2008.05.002> PMID: 19627803
52. Farzaneh-Far A, Proudfoot D, Weissberg PL, Shanahan CM. Matrix gla protein is regulated by a mechanism functionally related to the calcium-sensing receptor. *Biochemical and biophysical research communications*. 2000; 277(3):736–40. <https://doi.org/10.1006/bbrc.2000.3747> PMID: 11062022
53. Harno E, Edwards G, Geraghty AR, Ward DT, Dodd RH, Dauban P, et al. Evidence for the presence of GPRC6A receptors in rat mesenteric arteries. *Cell calcium*. 2008; 44(2):210–9. <https://doi.org/10.1016/j.ceca.2007.11.011> PMID: 18221783
54. Wellendorph P, Brauner-Osborne H. Molecular cloning, expression, and sequence analysis of GPRC6A, a novel family C G-protein-coupled receptor. *Gene*. 2004; 335:37–46. <https://doi.org/10.1016/j.gene.2004.03.003> PMID: 15194188
55. Pi M, Quarles LD. A novel cation-sensing mechanism in osteoblasts is a molecular target for strontium. *Journal of bone and mineral research: the official journal of the American Society for Bone and Mineral Research*. 2004; 19(5):862–9.
56. Pandolfi A, Grilli A, Cilli C, Patruno A, Giaccari A, Di Silvestre S, et al. Phenotype modulation in cultures of vascular smooth muscle cells from diabetic rats: association with increased nitric oxide synthase expression and superoxide anion generation. *Journal of cellular physiology*. 2003; 196(2):378–85. <https://doi.org/10.1002/jcp.10325> PMID: 12811832
57. Pace AJ, Gama L, Breitwieser GE. Dimerization of the calcium-sensing receptor occurs within the extracellular domain and is eliminated by Cys→Ser mutations at Cys101 and Cys236. *The Journal of biological chemistry*. 1999; 274(17):11629–34. PMID: 10206973
58. Ray K, Clapp P, Goldsmith PK, Spiegel AM. Identification of the sites of N-linked glycosylation on the human calcium receptor and assessment of their role in cell surface expression and signal transduction. *The Journal of biological chemistry*. 1998; 273(51):34558–67. PMID: 9852126
59. Bai M, Trivedi S, Kifor O, Quinn SJ, Brown EM. Intermolecular interactions between dimeric calcium-sensing receptor monomers are important for its normal function. *Proceedings of the National Academy of Sciences of the United States of America*. 1999; 96(6):2834–9. PMID: 10077597
60. Bai M, Trivedi S, Brown EM. Dimerization of the extracellular calcium-sensing receptor (CaR) on the cell surface of CaR-transfected HEK293 cells. *The Journal of biological chemistry*. 1998; 273(36):23605–10. PMID: 9722601
61. Cavanaugh A, McKenna J, Stepanchick A, Breitwieser GE. Calcium-sensing receptor biosynthesis includes a cotranslational conformational checkpoint and endoplasmic reticulum retention. *The Journal of biological chemistry*. 2010; 285(26):19854–64. <https://doi.org/10.1074/jbc.M110.124792> PMID: 20421307
62. Nacci C, Tarquinio M, De Benedictis L, Mauro A, Zigrino A, Carratu MR, et al. Endothelial dysfunction in mice with streptozotocin-induced type 1 diabetes is opposed by compensatory overexpression of cyclooxygenase-2 in the vasculature. *Endocrinology*. 2009; 150(2):849–61. <https://doi.org/10.1210/en.2008-1069> PMID: 18845644
63. Trovati M, Massucco P, Mattiello L, Costamagna C, Aldieri E, Cavalot F, et al. Human vascular smooth muscle cells express a constitutive nitric oxide synthase that insulin rapidly activates, thus increasing

guanosine 3':5'-cyclic monophosphate and adenosine 3':5'-cyclic monophosphate concentrations. *Diabetologia*. 1999; 42(7):831–9. <https://doi.org/10.1007/s001250051234> PMID: 10440125

64. Liang Y, Fang M, Li J, Yew DT. Immunohistochemical localization of endothelial isoform (eNOS) in human cerebral arteries and the aorta. *The International journal of neuroscience*. 2006; 116(12):1403–17. <https://doi.org/10.1080/00207450500514375> PMID: 17145676