

Targeting Chronic Myeloid Leukemia Stem Cells with the Hypoxia-Inducible Factor Inhibitor Acriflavine

Giulia CHELONI,^{1,2,3} Michele TANTURLI,¹ Ignazia TUSA,^{1,3} Ngoc Ho DESOUZA,² Yi SHAN,² Antonella GOZZINI,⁴ Frédéric MAZURIER,⁵ Elisabetta ROVIDA,^{1,3,*} Shaoguang LI,² and Persio DELLO SBARBA^{1,3,*}

Affiliations: ¹Department of Experimental and Clinical Biomedical Sciences "Mario Serio", Università degli Studi di Firenze, Florence, Italy. ²Department of Medicine, University of Massachusetts Medical School, Worcester, MA, U.S.A. ³Istituto Toscano Tumori, Tuscany, Italy. ⁴Functional Unit of Hematology, Azienda Ospedaliero-Universitaria Careggi (AOUC), Università degli Studi di Firenze, Florence, Italy. ⁵Université François-Rabelais de Tours, CNRS, GICC UMR 7292, LNOx team, Tours, France.

Short title: Acriflavine targets CML stem cells

Primary Scientific Category: Myeloid neoplasia.

Correspondence: Persio DELLO SBARBA or Elisabetta ROVIDA
Dipartimento di Scienze Biomediche Sperimentali e Cliniche "Mario Serio",
viale G.B. Morgagni 50, 50134 Firenze, Italia.
persio@unifi.it - elisabetta.rovida@unifi.it
+39 055 275 1293/1320

KEY POINTS 1) The HIF inhibitor acriflavine suppresses TKi-insensitive CML stem cells.
2) The FDA-approved drug acriflavine may represent a novel treatment to prevent CML relapse and, in combination with TKi, to improve remission.

ABSTRACT

Chronic myeloid leukemia (CML) is a hematopoietic stem cell (HSC)-driven neoplasia characterized by the expression of the constitutively-active tyrosine kinase BCR/Abl. CML therapy based on tyrosine kinase inhibitors (TKi) is highly effective in inducing remission but not in targeting leukemia stem cells (LSC), which sustain minimal residual disease and are responsible for CML relapse following discontinuation of treatment. The identification of molecules capable to target LSC appears therefore of primary importance to aim at CML eradication. LSC home in bone marrow areas at low oxygen tension where HSC are physiologically hosted. This study addresses the effects of the pharmacological inhibition of hypoxia-inducible factor-1 (HIF-1), a critical regulator of LSC survival, on the maintenance of CML stem cell potential.

We found that the HIF-1 inhibitor acriflavine (ACF) decreased survival and growth of CML cells. These effects were paralleled by a decreased expression of c-MYC and stemness-related genes. Using different *in vitro* stem cell assays, we showed that ACF, but not TKi, target stem cell potential of CML cells, including primary cells explanted from twelve CML patients. Moreover, in a murine CML model, ACF decreased leukemia development and reduced LSC maintenance. Importantly, ACF exhibited significantly less severe effects on non-CML hematopoietic cells *in vitro* and *in vivo*. Thus, we propose ACF, an FDA-approved drug for non-oncological use in humans, as a novel therapeutic approach to prevent CML relapse and, in combination with TKi, to enhance induction of remission.

INTRODUCTION

Chronic myeloid leukemia (CML), a clonal disease affecting hematopoietic stem cells (HSC), is driven by the 9;22(q34.1;q11.2) chromosomal translocation, which results in the expression of BCR/Abl oncoprotein, a constitutively-active tyrosine kinase. Chronic-phase CML patients are treated with tyrosine kinase inhibitors (TKi) targeting BCR/Abl, such as imatinib-mesylate (IM).¹ Successful TKi therapy leads in most cases, rather than to CML cure, to a state of minimal residual disease, apparently sustained by the persistence of TKi-resistant leukemia stem cells (LSC).²⁻⁶ Thus, the search for drugs capable of targeting these cells is of primary importance in order to eradicate CML.

In bone marrow (BM), LSC most likely reside in stem cell niches located within tissue areas at very low oxygen tension, where HSC are physiologically hosted.^{7,8} Studies from our group⁹⁻¹¹ and others^{12,13} demonstrated that low oxygen maintains HSC survival and stem cell potential, favoring HSC self-renewal. The same applies to LSC,¹⁴ those of CML in particular.^{4,5,15} Interestingly, BCR/Abl oncoprotein is suppressed in low oxygen.^{4,5} This mechanism, among others,^{16,17} well explains the refractoriness of LSC to BCR/Abl-targeting TKi, provided they manage to survive in the absence of BCR/Abl kinase signaling.

Hypoxia-inducible factors (HIF) are key regulators of cell adaptation to low oxygen.¹⁸ HIF-1 is a transcription factor composed of an α and a β subunit and regulated mainly by oxygen tension. Oxygen levels lower than 7% stabilize HIF-1 α , which binds the HIF-1 β subunit and drives the transcription of genes regulating energetic metabolism, cell survival/proliferation, and angiogenesis.¹⁸ HIF-1 also drives cancer progression.¹⁹ In CML cell populations, HIF-1 α and HIF-responsive genes are up-regulated by BCR/Abl.^{20,21} In murine models of CML, the genetic knock/out of HIF-1 α prevents CML development by impairing cell cycle progression and inducing apoptosis in LSC.²¹ Thus, HIF-1 α represents a critical factor in CML and its targeting appears as a potential therapeutic strategy to eradicate LSC.

In this study, we addressed the effects of pharmacological inhibition of HIF-1 α in CML. Using CML cell lines and primary cells as well as a murine model of CML, we found that LSC that survive TKi treatment are instead sensitive to acriflavine (ACF), a HIF-1 inhibitor²² FDA-approved for non-oncological human use. On this basis, we propose ACF as a novel therapeutic approach to prevent CML relapse.

MATERIALS AND METHODS

Cells and culture conditions

Cell lines were cultured in RPMI1640 (K562,²³ KCL22²⁴ and LAMA-84²⁵ CML cells) or DMEM (HEK293T²⁹ and NIH/3T3³⁰ cells) supplemented with 10% FBS, 50 units/ml penicillin, 50 mg/ml streptomycin, 2 mM glutamine (Euro-Clone, Paington, U.K.).

K562 cells transfected with shRNA against HIF-1 α (shHIF-1 α) or control shRNA against red fluorescent protein were sorted on the basis of green fluorescent protein (GFP) expression.²⁶ The shRNA sequence targeting HIF-1 α was: gatgtagctccctatatcccTTCAAGAGAgggatataggagctaacatc; the control shRNA sequence was: gctccaaggtgtacgtgaaTTCAAGAGAttcacgtacaccttgagc (upper case: loop; lower case: shRNA sequence).

Mononuclear cells (MC) from BM (BMMC) of CML patients (Table S1) or peripheral blood (PB; buffy coat) of healthy donors were cultured in IMDM supplemented with 20% FBS, 50 units/ml penicillin, 50 mg/ml streptomycin, 2 mM glutamine, and cytokines (Supplemental Methods).

Exponentially-growing cells were plated at 3×10^5 /ml and incubated at 37°C in low oxygen (water-saturated atmosphere containing 0.1% O₂, 94.9% N₂ and 5% CO₂) in a DG250 Anaerobic Workstation (Don Whitley Scientific, Shipley, Bridgend, U.K.) or normoxia (21% O₂ and 5% CO₂). The O₂ concentration used for low-oxygen incubation mimics that of endosteal areas,^{27,28} in which most primitive stem cells reside.⁷

Cell viability was measured by trypan blue (#F-7378, Sigma-Aldrich, St. Louis, MO, U.S.A.) exclusion test.

Reagents

3-(5'-hydroxymethyl-2'-furyl)-1-benzyl-indazole (YC-1; #170632-47-0, Sigma-Aldrich), and Dasatinib (Dasa; #1586, Biovision, Milpitas, CA, U.S.A.) were dissolved in DMSO. Imatinib (IM; #202180, Santa Cruz Biotechnology, Dallas, TX, U.S.A.) and Acriflavine (ACF; #8063-24-9, Sigma-Aldrich) were dissolved in PBS. ACF decreases HIF transcriptional activity by inhibiting the α/β dimerization;²² YC1 inhibits HIF-1 α activity by promoting its degradation, inhibiting its translation,^{31–33} stimulating “factor inhibiting HIF” and reducing binding of p300, a co-activator indispensable for transcription initiation of HIF-1 α -downstream genes.³⁴

Cell lysis and western blotting

Whole cell lysates were obtained using Laemmli buffer. Hypotonic buffer was used for cytosol/nucleus separation. Protein concentration was determined by the BCA method (#23225, ThermoFisher Scientific, Waltham, MA, U.S.A.) and 30–50 μ g protein/sample were subjected to SDS-PAGE and transferred onto PVDF membranes (Merck-Millipore, Billerica, MA, U.S.A.) by electroblotting.³⁵ Membranes were incubated overnight at 4°C with primary antibody

(Supplemental Methods). Antibodies were diluted 1:1000 or 1:500 (anti-c-Abl, -VEGF -HIF-1 α , -Sox2) in Odyssey Blocking Buffer (OBB; LI-COR[®] Biosciences, Lincoln, NE, U.S.A.) 1:1 with PBS-0.1% Tween-20. Washed membranes were incubated for 1h at room temperature (RT) in OBB 1:1 with PBS containing IRDye800CW-(1:20000)- or IRDye680-(1:30000)-conjugated secondary antibody (LI-COR[®]). Antibody-coated protein bands were visualized by Odyssey Infrared Imaging System Densitometry (LI-COR[®]).

RNA extraction and q-PCR

Cells (9×10^6) incubated in low oxygen or normoxia were washed with PBS and total RNA was extracted using Trizol reagent (#15596026; ThermoFisher Scientific) following the manufacturer's protocol. Residual DNA was removed by DNase-I (#10104159001; Roche Diagnostics, Lewes, U.K.). RNA quality was evaluated in a 2% Agarose gel. cDNA was synthesized using ImProm-ITM Reverse Transcription System kit (#A3800; Promega, Madison, WI, U.S.A.) following manufacturer's instructions. q-PCR was carried out using Green GoTaq qPCR Master Mix (#A6001; Promega). Primers were from Qiagen (CAIX, #QT00011697; HIF-1 α , #QT00083664; Hilden, Germany) or designed as in Table S2.

Culture Repopulation Ability (CRA) assay

The CRA assay is an *in vitro* cognate of marrow repopulation ability assay *in vivo*³⁶ where cells to be assayed are, rather than transplanted into syngeneic animals, transferred into growth-permissive liquid cultures (LC2), to monitor the entity and kinetics of their repopulation.^{14,16,37} Peak value and time to peak of LC2 repopulation are indicators of stem cell potential of input cells. In this study, cells were subjected to drug treatment in liquid cultures (3×10^5 cells/ml) incubated in low-oxygen (LC1) for 7 or 9 days, washed free of drug and transferred in fresh medium to normoxic LC2 (3×10^4 cells/ml), where viable cell number was determined at different times. Medium was never renewed during incubation in LC1 and LC2.

Isolation of human mononuclear cells and CD34+ cell enrichment

BM aspirates from CML patients or PB samples from healthy donors were obtained following informed consent and under the approval of the Ethics Committee of AOUC University Hospital (authorization n^o 520/10, 18th october 2010, renewed with n^o 2015/0032965, 4th november 2015). MC were Ficoll-isolated (Cedarlane Laboratories, Ontario, Canada) following manufacturer's instructions, centrifuged and plated in cytokine-supplemented IMDM (Supplemental Methods).

CD34+ cells were enriched from Ficoll-isolated PBMC or BMMC using CD34 Microbead Kit (#130-046-703, MACS, Miltenyi Biotec, Bergisch Gladbach, Germany) following manufacturer's protocol. The percentage of CD34+ cells was determined by flow cytometry.

Colony Formation Ability (CFA) assay

CML patient-derived BMMC ($2.5\text{-}5.0 \times 10^4$), or CD34-enriched PBMC from healthy donors ($0.5\text{-}1.0 \times 10^3$) were suspended in IMDM containing 2% FBS, 100 units/ml penicillin/streptomycin. Cells were plated in methyl-cellulose-containing medium (#04435, Stem Cell Technology, Vancouver, BC, Canada) in 35-mm dishes, treatments were applied at time 0 and colonies were counted after 7, 14 or 21 days of incubation. Colony formation efficiency was calculated dividing the number of colonies scored by the number of cells plated. In some experiments, cells were serially replated after 7 or 14 days of culture.

Long Term Culture-Initiating Cell (LTC-IC) assay

BMMC from CML patients were drug-treated in low oxygen for 2 days, resuspended in human long-term medium (HLTM, Myelocult #05100, Stem Cell Technology) supplemented with hydrocortisone (10^{-6}M) and plated onto irradiated (8000 cGy) M2-10B4 cells in collagen-coated 35-mm dishes. Half of medium was replaced weekly. After 5 weeks, cells were replated (5×10^4 /35-mm dish) in methyl-cellulose-containing medium (#04435, Stem Cell Technology) and colonies scored after 14 days.

Mice

C57BL/6J-CD45.1 mice (The Jackson Laboratory, Bar Harbor, ME, U.S.A) were handled in accordance with protocols and regulations approved by the IACUC of University of Massachusetts Medical School. CML mice were treated daily with ACF (8 mg/kg) or PBS via intraperitoneal injection, for 10 days starting from day 7 after bone marrow transplantation.

Murine CML model

Retroviruses were prepared and CML induced in mice as previously described.^{38,39} The retroviral construct MSCV-BCR/ABL-IRES-GFP was used to generate high-titer, helper-free, replication-defective ecotropic viruses by transient transfection of 293T cells. Viral titer was evaluated by flow cytometry following infection of NIH/3T3 cells. Donor mice were injected with 5-FU (200 mg/kg; #6627, Sigma-Aldrich) via tail vein and sacrificed after 4 days. BM cells were flushed out of femurs and tibiae, infected with the above viruses, counted and transplanted (5×10^5 cells in 300 μl /mouse) into recipient mice pre-treated with 2 doses of 550-cGy gamma 2h apart from each other.

Flow cytometry

Apoptosis was quantified in K562 or KCL22 cells by annexin V-APC (#31490016; Immunotools; Friesoythe, Germany), following the manufacturer's instructions. Murine BM or PB cells were incubated with red blood cell lysis buffer, washed, resuspended in PBS and antibody-labelled

(Supplemental Methods). 7AAD (#559925, BD Biosciences, San Jose, CA, U.S.A.) was added before flow cytometry with a FACSAria (BD; Franklin Lakes, NJ, U.S.A.). Results were analyzed using the FlowJo software (Ashland, OR, U.S.A.).

Statistical analyses

Statistical analysis for pairwise comparisons was performed using Student's *t* test for paired samples (data following a normal distribution), while that for multiple comparisons was performed by ANOVA, when values followed normal distribution, or nonparametric tests, using GraphPad software (La Jolla, CA, U.S.A.). A *p* value less than 0.05 was considered statistical significant.

RESULTS

Acriflavine reduces cell number, c-MYC expression and stem cell potential in CML cells.

We evaluated the effects of CML cell incubation in low oxygen on HIF-1 α expression and activity. We found that HIF-1 α protein is expressed in primary and stabilized CML cells in normoxia (Figure 1A), as observed in other blood cancers.⁴⁰ Nevertheless, in K562 or KCL22 cells, the expression of nuclear HIF-1 α protein increased in low oxygen (Figure 1B). Hypoxia also increased HIF-1 α activity, as indicated by the enhanced expression of carbonic anhydrase 9 (CAIX) and vascular-endothelial growth factor (VEGF), both encoded for by HIF-1 α -targeted genes (Figure 1C). To identify drugs suitable for HIF-1 α targeting in CML cells, we tested two HIF inhibitors with different mechanism of action. ACF, but not YC1 (Figure 1D), at concentrations around IC50 (Figure S1A), inhibited the increase of *CAIX* and *VEGF* mRNA induced by a 2-day incubation in low oxygen. ACF or YC1 did not reduce *HIF-1 α* mRNA, in agreement with their mechanisms of action. These results suggested that the reduction of viable cell number determined by YC1 in low oxygen (Figure S1A,B) was due to effects different from the inhibition of transcriptional activity of HIF-1 α . Thus, we decided to use ACF for further investigations.

ACF treatment reduced the number of viable KCL22 or K562 cells in low oxygen (Figure 2A), an effect paralleled by the induction of apoptosis (Figure 2B,C). The anti-proliferative effect of ACF was supported by the fact that ACF suppressed the expression of c-MYC (Figure 2D), a proto-oncogene important for cell cycle regulation and BCR/Abl-driven transformation.^{41,42} ACF inhibited c-MYC expression at the transcriptional (data not shown) and protein expression levels, exhibiting in the latter case higher efficiency than IM. We previously demonstrated that leukemia cell lines, including CML lines, are functionally heterogeneous and comprise cell subsets endowed with different stem/progenitor cell potential. Such a heterogeneity emerged following incubation in low oxygen.^{4,5,14} On this basis, using K562 and KCL22 cells, we tested the effects of ACF on the maintenance of CML stem cell potential in low oxygen (Figure 2E). Cells were drug-treated or not (PBS addition) from time 0 in primary cultures (LC1) in low oxygen and transferred on day 7 to drug-free secondary cultures (LC2) incubated in normoxia, to exploit their repopulation potential. LC2 repopulation was indeed used as a read-out of maintenance of stem cell potential in LC1. This assay is an *in vitro* cognate of the marrow repopulation assay (see M&M).^{16,36,37} It is worth noting here that around 1% of cells rescued from a 7-day incubation in low-oxygen LC1 is responsible for LC2 repopulation (data not shown). Untreated LC1 cells repopulated LC2 after a 7-10 day lag-phase as previously reported.^{4,5} LC2 repopulation was abolished by ACF (Figure 2E). To exclude that the lack of LC2 repopulation was due to residual ACF from LC1, we measured the amount of ACF in LC2 culture medium by LC-MS/MS (Supplemental Methods). ACF concentration resulted 81.3 \pm 4.6 nM (vs 5 μ M at time 0 of LC1). Such a concentration was found unable to affect growth kinetics of K562 or KCL22 cells (Figure S2).

In contrast to ACF, YC1 was ineffective in preventing LC2 repopulation (Figure S1C), likely because of its inefficacy in inhibiting HIF-1 α activity (Figure 1D). The effect of HIF-1 α inhibition in abolishing LC2 repopulation was confirmed in K562 cells by shRNA (Figure 2F). Finally, the effects of ACF on the maintenance of stem cell potential in low-oxygen culture were tested under conditions likely to better mimic the *in vivo* scenario, where LSC are adapted to the low-oxygen stem cell niche before the beginning of drug treatment. Thus, ACF was administered to K562 or KCL22 cultures at day 6 of incubation in low oxygen, and cells were transferred to LC2 at day 9. ACF suppressed LC2 repopulation, indicating that a previous LSC adaptation to low oxygen did not reduce the drug's effectiveness on stem cell potential (Figure 2G). We also determined in K562 cells the effects of low oxygen and ACF treatment on stemness-related genes, such as *NANOG*, *OCT4* and *SOX2* (Figure S3). The expression of these genes was markedly increased in low oxygen⁴³ and ACF treatment reduced this increase. Thus, low oxygen boosts stem cell potential, which is targeted by ACF.

As TKi represent a consolidated standard for CML therapy, it was important to determine whether the combination with ACF could affect the action of IM negatively and *vice versa* (Figure 3). K562 or KCL22 cells were incubated in low oxygen for 3 days in the absence or presence of ACF or IM or their combination. As expected, IM reduced the number of viable cells in culture. Interestingly, drug combination enhanced the effects of single-drug treatments (Figure 3A). Furthermore, cells incubated in low oxygen and treated as above were transferred to normoxic LC2 on day 7. Despite its effect on cell bulk, IM did not affect LC2 repopulation (Figure 3B), as we previously reported,^{4,5} in keeping with the refractoriness of LSC to TKi.^{2,3,6} ACF completely suppressed LC2 repopulation, irrespectively of the presence or absence of IM (Figure 3B). Thus, ACF targets TKi-insensitive LSC while contributing to the debulking of disease.

Acriflavine reduces colony formation ability and stem cell potential of primary CML cells.

The effectiveness of ACF on primary CML cells was then tested and compared to that of TKi. ACF concentration-dependently inhibited CFA by primary human (Figures 4A and S4A) or murine (data not shown) CML cells. As expected, IM or Dasa also inhibited CFA. ACF was similarly active on CD34-enriched CML cells (CML #9). On CD34+ cells from normal healthy donors (NHD; Figure 4A and S4A), the effects of ACF were, for NHD#2, not significant throughout the incubation, or for NHD#1, significant at day 14, but not 7 and 21. Furthermore, the effects of 0.5 μ M ACF were never significant for NHD, differently from what obtained for CML patients. ACF was at least as effective as IM or Dasa in reducing the number of viable cells in low-oxygen LC1 (Figures 4B and S4B). ACF suppressed LC2 repopulation by CML cells selected in low-oxygen LC1 (Figures 4C and S4C), in keeping with what observed for CML cell lines. IM or Dasa, on the contrary, did not affect LC2 repopulation significantly (Figure 4C). Thus, the stem cell potential of patient-derived CML cells selected in low oxygen was sensitive to ACF and resistant to TKi. Moreover, ACF did not

affect LC2 repopulation by CD34+ NHD cells. Overall, these results point to a good therapeutic index of ACF.

The effects of ACF in the inhibition of stem cell potential of primary CML cells were confirmed using serial CFA and LTC-IC assays. ACF, alone or in combination with IM, reduced replating efficiency in all patients. On the contrary, IM, in two out of three patients, not only did not reduce, but actually enhanced CFA starting from tertiary cultures (Figure 5A). In the highly stringent LTC-IC assay, ACF, differently from IM, was strongly effective (Figure 5B).

Acridlavine reduces CML development and LSC maintenance *in vivo*.

The effects of ACF were tested *in vivo* using mice transplanted with *BCR/abl*-transduced BM cells.^{21,38,39,44} CML mice were treated daily with ACF (8 mg/kg) or placebo for 10 days starting one week after transplantation. ACF treatment was well tolerated in non-manipulated healthy mice, even at concentrations higher than 8 mg/kg, as far as overall physical appearance, behavior and weight changes are concerned (data not shown). Splenomegaly, lung infiltrate with myeloid cells and WBC count in PB of CML mice were reduced in the ACF-treated when compared to the placebo-treated group (Figure 6A-C). FACS analysis of PB cells showed that ACF reduced the percentage of GFP+ (*BCR/abl*-expressing), but not GFP- (*BCR/abl*-negative) myeloid (Gr-1+) cells (Figure 6D). In BM of ACF-treated mice, viable cell number decreased significantly when compared to the placebo-treated group (Figure 7A). The reduction of GFP+ cell number under ACF treatment was significantly higher than that of GFP- cells (Figure 7B). Accordingly, the percentage of apoptotic cells increased among GFP+, but not GFP-, cells (Figure 7C). In the same experiments, we tested whether ACF affected LSC compartment. The CD34-/Lineage-/Sca-1+/c-Kit+ (CD34-/LSK) cells subset was analyzed in particular, which in mice includes the long-term LSC (LT-LSC) subset capable to induce CML when transplanted.³ ACF markedly reduced percentage and number of GFP+/CD34-/LSK cells (Figure 7D). By contrast, the effect of ACF on GFP-/CD34-/LSK cells was not significant. Overall, the *in vivo* data indicated that ACF is active on CML cells, CD34-/LSC in particular, with negligible effects on non-CML cells.

DISCUSSION

The development of new therapeutic strategies able to target TKI-insensitive LSC appears of extreme importance in view of CML eradication. Low oxygen is a condition frequently occurring in neoplastic cell masses, including leukemias,⁴⁵ and in tissue sites where normal and neoplastic stem cells are preferentially hosted.^{16,46} Previous work of ours showed that LSC selected under low oxygen tension are TKI-insensitive^{4,5} and that HIF-1 α -dependent signaling is relevant to LSC maintenance in CML.²¹ This established a rationale for HIF targeting as a possible strategy for CML treatment. A number of HIF inhibitors has been developed,^{31,32,47-50} including those targeting a specific step of HIF-1 signaling, such as dimerization, coactivator recruitment^{51,52} or DNA binding.⁵³ Here, we showed that ACF, an inhibitor of HIF dimerization,²² is capable to suppress the maintenance of LSC *in vitro* and *in vivo* as well as to inhibit CML cell growth.

That ACF targets LSC of CML was first demonstrated *in vitro*. ACF suppressed stem cell potential in low oxygen in two cell lines and primary cells from fifteen patients, including one in blast crisis, as determined by CRA, serial CFA and LTC-IC assays. Importantly, in the same experiments, IM or Dasa were unable to affect stem cell potential significantly (see below). ACF suppressed stem cell potential even when administered to cells long after the beginning of incubation in low oxygen. This is very important in view of the facts that, when patients receive treatments, LSC are already hosted within low-oxygen stem cell niches and that adaptation to low oxygen can protect cancer stem cells from drug treatments.^{15,54,55} Furthermore, in low oxygen, ACF significantly reduced the expression of the stemness-related genes *NANOG*, *OCT4* and *SOX2*, in keeping with the inhibition of stem cell potential. As these genes seem to be under HIF-2 α , rather than HIF-1 α , transcriptional control,^{56,57} this effect of ACF is likely due to the fact that the drug is also capable of inhibiting HIF-2 α .²²

LSC targeting by ACF was confirmed *in vivo*. Using a murine model of BCR/Abl-induced CML,^{21,38,44} we demonstrated that ACF markedly reduces the maintenance of the LSK cell subset containing LT-LSC (CD34-/LSK)³ in BM. Thus, ACF emerged as a possible therapeutic strategy to suppress LSC and thereby prevent CML relapse. ACF was also capable to reduce the overall CML burden in mice, as indicated by the less severe splenomegaly and the fewer leukemia cells in BM, PB and lungs. Thus, ACF targeted significantly not only LSC, but also less immature CML cell subsets. This is consistent with the marked reduction of cell bulk in ACF-treated primary or stabilized CML cell cultures.

The ACF-induced growth inhibition may be mediated, at least in part, by the reduction of c-MYC expression observed. ACF could interfere with the complex crosstalk between HIF proteins and c-MYC,⁵⁸ which collaborate to reprogram tumor cell metabolism towards glycolysis and sustain survival of oxygen-deprived cells.⁵⁹ In CML, besides interacting with HIF proteins, c-MYC upregulates BCR/Abl expression,^{41,42} is necessary for BCR/Abl-induced transformation, increases genomic instability and participates in disease progression from chronic phase to blast crisis.⁶⁰

Accordingly, in patients, an increase of c-MYC expression is related to a worse prognosis. The pharmacological inhibition of c-MYC has been reported to have an anti-leukemic effect which is synergistic with that of IM.⁶¹ Interestingly, in our experiments, ACF was more effective than IM in the reduction of c-MYC expression. It is worth pointing out that the inhibition of c-MYC by ACF may be also HIF-independent. Such a property, while detracting from the specificity of ACF effects on HIF, may turn out useful to increase the therapeutic activity of the drug.

We previously showed that IM reduces CML cell bulk but does not affect the maintenance of stem cell potential in low oxygen.^{4,5} Here, we extended these findings, on one hand, to primary CML cells, on the other, to a second-generation TKi such as Dasa. These results are in agreement with the notion of the refractoriness to TKi, irrespective of TKi generation, exhibited by LSC^{2,3,6,17} capable to stand low oxygen.^{4,5,16,46} Moreover, we confirmed that this refractoriness was not due to mutations of *BCR/abl* kinase domain, as the tested patients were negative for *BCR/abl* mutations. Finally, we observed that the combination of IM with ACF resulted more effective than either drug alone in reducing CML cell bulk in low oxygen and that IM did not interfere with the detrimental effect of ACF on stem cell potential or CFA. Both findings are of interest in view of a clinical use of the ACF/TKi combination.

The translational projection of our work prompted us to test ACF on non-leukemic cells and mice. ACF did not inhibit significantly colony formation and stem cell potential by CD34+ PBMC from healthy donors. In the murine CML model, when we compared within individual mice (averaged) the effects of ACF on GFP+ (leukemic) cells with those on GFP- (non-leukemic) cells, we found that the latter were significantly less sensitive to ACF, as far as total PB or BM cells or CD34+/LSK are concerned. This is well in keeping with the less severe addiction to HIF-1 α of HSC when compared to LSC.²¹ Finally, ACF was well tolerated by un-manipulated (non-*BCR/abl*-transduced) mice even when administered at doses higher than that used for the experiments reported in this study (data not shown). This points to a good therapeutic index of ACF in discriminating leukemic from normal hematopoietic cells.

On the basis of all above, ACF emerges as a good candidate to target at one time CML cell bulk and LSC, thus inducing remission and preventing late relapse of disease. It is worth noting that ACF is an already FDA-approved drug for non-oncological uses in humans,²² and that ACF was administered to patients for at least 5 months without major adverse effects.⁶² Thus, we propose ACF as a novel therapeutic approach to prevent CML relapse and, in combination with TKi, to enhance induction of remission.

ACKNOWLEDGEMENTS

The Authors thank Dr. Matteo Lulli and Dr. Davide Tavella for helpful data discussion and suggestions. This study was supported by research funding from: Associazione Italiana per la Ricerca sul Cancro (AIRC; grants #IG5220 and #IG13466), Istituto Toscano Tumori (ITT; grants 1-12-2008 and 15-12-2014), Ministero della Salute (grant #RF-TOS-2008-1163728); Regione Toscana – Programma per la Ricerca in Materia di Salute 2009 and Ente Cassa di Risparmio di Firenze.

AUTHORSHIP AND CONFLICT OF INTEREST

Giulia CHELONI, Michele TANTURLI, Ignazia TUSA, Ngoc Ho DESOUZA, Yi SHAN carried out the experiments; Giulia CHELONI, Elisabetta ROVIDA, Persio DELLO SBARBA and Shaoguang LI designed the experiments; Frédéric MAZURIER developed HIF k/o K562 cells; Antonella GOZZINI handled the patients; Giulia CHELONI, Elisabetta ROVIDA and Persio DELLO SBARBA analysed the data and wrote the manuscript; Frédéric MAZURIER and Shaoguang LI revised the manuscript. The authors have no conflict of interest to declare.

REFERENCES

1. Druker BJ, Sawyers CL, Kantarjian H, et al. Activity of a specific inhibitor of the BCR-ABL tyrosine kinase in the blast crisis of chronic myeloid leukemia and acute lymphoblastic leukemia with the Philadelphia chromosome. *N Engl J Med*. 2001;344(14):1038-1042.
2. Graham SM, Jorgensen HG, Allan E, et al. Primitive, quiescent, Philadelphia-positive stem cells from patients with chronic myeloid leukemia are insensitive to STI571 in vitro. *Blood*. 2002;99(1):319-325.
3. Hu Y, Swerdlow S, Duffy TM, Weinmann R, Lee FY, Li S. Targeting multiple kinase pathways in leukemic progenitors and stem cells is essential for improved treatment of Ph+ leukemia in mice. *Proc Natl Acad Sci USA*. 2006;103(45):16870-16875.
4. Giuntoli S, Rovida E, Barbetti V, Cipolleschi MG, Olivotto M, Dello Sbarba P. Hypoxia suppresses BCR/Abl and selects imatinib-insensitive progenitors within clonal CML populations. *Leukemia*. 2006;20(7):1291-1293.
5. Giuntoli S, Tanturli M, Di Gesualdo F, Barbetti V, Rovida E, Dello Sbarba P. Glucose availability in hypoxia regulates the selection of chronic myeloid leukemia progenitor subsets with different resistance to imatinib-mesylate. *Haematologica*. 2011;96(2):204-212.
6. Corbin AS, Agarwal A, Loriaux M, Cortes J, Deininger MW, Druker BJ. Human chronic myeloid leukemia stem cells are insensitive to imatinib despite inhibition of BCR-ABL activity. *J Clin Invest*. 2011;121(1):396-409.
7. Parmar K, Mauch P, Vergilio J-A, Sackstein R, Down JD. Distribution of hematopoietic stem cells in the bone marrow according to regional hypoxia. *Proc Natl Acad Sci USA*. 2007;104(13):5431-5436.
8. Eliasson P, Jonsson J-I. The hematopoietic stem cell niche: low in oxygen but a nice place to be. *J Cell Physiol*. 2010;222(1):17-22.
9. Cipolleschi MG, Dello Sbarba P, Olivotto M. The role of hypoxia in the maintenance of hematopoietic stem cells. *Blood*. 1993;82(7):2031-2037.
10. Ivanovic Z, Bartolozzi B, Bernabei PA, et al. Incubation of murine bone marrow cells in hypoxia ensures the maintenance of marrow-repopulating ability together with the expansion of committed progenitors. *Brit J Haematol*. 2000;108(2):424-429.
11. Ivanovic Z, Dello Sbarba P, Trimoreau F, Faucher JL, Praloran V. Primitive human HPCs are better maintained and expanded in vitro at 1 percent oxygen than at 20 percent. *Transfusion*. 2000;40(12):1482-1488.
12. Danet GH, Pan Y, Luongo JL, Bonnet DA, Simon MC. Expansion of human SCID-repopulating cells under hypoxic conditions. *J Clin Invest*. 2003;112(1):126-135.

13. Eliasson P, Rehn M, Hammar P, et al. Hypoxia mediates low cell-cycle activity and increases the proportion of long-term-reconstituting hematopoietic stem cells during in vitro culture. *Exp Hematol*. 2010;38(4):301-310.e2.
14. Giuntoli S, Rovida E, Gozzini A, et al. Severe hypoxia defines heterogeneity and selects highly immature progenitors within clonal erythroleukemia cells. *Stem Cells*. 2007;25(5):1119-1125.
15. Tantarli M, Giuntoli S, Barbetti V, Rovida E, Dello Sbarba P. Hypoxia selects bortezomib-resistant stem cells of chronic myeloid leukemia. *PLoS One*. 2011;6(2):e17008.
16. Cipolleschi MG, Rovida E, Dello Sbarba P. The Culture-Repopulating Ability assays and incubation in low oxygen: a simple way to test drugs on leukaemia stem or progenitor cells. *Curr Pharm Des*. 2013;19(30):5374-5383.
17. Zhang H, Li S. Molecular mechanisms for survival regulation of chronic myeloid leukemia stem cells. *Protein Cell*. 2013;4(3):186-196.
18. Majmundar AJ, Wong WJ, Simon MC. Hypoxia-inducible factors and the response to hypoxic stress. *Mol Cell*. 2010;40(2):294-309.
19. Semenza GL. HIF-1 mediates metabolic responses to intratumoral hypoxia and oncogenic mutations. *J Clin Invest*. 2013;123(9):3664-3671.
20. Mayerhofer M, Valent P, Sperr WR, Griffin JD, Sillaber C. BCR/ABL induces expression of vascular endothelial growth factor and its transcriptional activator, hypoxia inducible factor-1alpha, through a pathway involving phosphoinositide 3-kinase and the mammalian target of rapamycin. *Blood*. 2002;100(10):3767-3775.
21. Zhang H, Li H, Xi HS, Li S. HIF1alpha is required for survival maintenance of chronic myeloid leukemia stem cells. *Blood*. 2012;119(11):2595-2607.
22. Lee K, Zhang H, Qian DZ, Rey S, Liu JO, Semenza GL. Acriflavine inhibits HIF-1 dimerization, tumor growth, and vascularization. *Proc Natl Acad Sci USA*. 2009;106(42):17910-17915.
23. Lozzio CB, Lozzio BB. Human chronic myelogenous leukemia cell-line with positive Philadelphia chromosome. *Blood*. 1975;45(3):321-334.
24. Kubonishi I, Miyoshi I. Establishment of a Ph1 chromosome-positive cell line from chronic myelogenous leukemia in blast crisis. *Int J Cell Clon*. 1983;1(2):105-117.
25. Blom T, Nilsson G, Sundstrom C, Nilsson K, Hellman L. Characterization of a human basophil-like cell line (LAMA-84). *Scand J Immunol*. 1996;44(1):54-61.
26. Rouault-Pierre K, Lopez-Onieva L, Foster K, et al. HIF-2alpha protects human hematopoietic stem/progenitors and acute myeloid leukemic cells from apoptosis induced by endoplasmic reticulum stress. *Cell Stem Cell*. 2013;13(5):549-563.

27. Chow DC, Wenning LA, Miller WM, Papoutsakis ET. Modeling pO(2) distributions in the bone marrow hematopoietic compartment. II. Modified Kroghian models. *Biophys J*. 2001;81(2):685-696.
28. Chow DC, Wenning LA, Miller WM, Papoutsakis ET. Modeling pO(2) distributions in the bone marrow hematopoietic compartment. I. Krogh's model. *Biophys J*. 2001;81(2):675-684.
29. DuBridge RB, Tang P, Hsia HC, Leong PM, Miller JH, Calos MP. Analysis of mutation in human cells by using an Epstein-Barr virus shuttle system. *Mol Cell Biol*. 1987;7(1):379-387.
30. Todaro GJ, Green H. Quantitative studies of the growth of mouse embryo cells in culture and their development into established lines. *J Cell Biol*. 1963;17:299-313.
31. Yeo E-J, Chun Y-S, Cho Y-S, et al. YC-1: a potential anticancer drug targeting hypoxia-inducible factor 1. *J Natl Cancer Inst*. 2003;95(7):516-525.
32. Kim H-L, Yeo E-J, Chun Y-S, Park J-W. A domain responsible for HIF-1alpha degradation by YC-1, a novel anticancer agent. *Int J Oncol*. 2006;29(1):255-260.
33. Lau CK, Yang ZF, Lam CT, Tam KH, Poon RTP, Fan ST. Suppression of hypoxia inducible factor-1alpha (HIF-1alpha) by YC-1 is dependent on murine double minute 2 (Mdm2). *Biochem Biophys Res Comm*. 2006;348(4):1443-1448.
34. Li SH, Shin DH, Chun Y-S, Lee MK, Kim M-S, Park J-W. A novel mode of action of YC-1 in HIF inhibition: stimulation of FIH-dependent p300 dissociation from HIF-1{alpha}. *Mol Cancer Ther*. 2008;7(12):3729-3738.
35. Barbetti V, Gozzini A, Cheloni G, et al. Time- and residue-specific differences in histone acetylation induced by VPA and SAHA in AML1/ETO-positive leukemia cells. *Epigenetics*. 2013;8(2):210-219.
36. Cipolleschi MG, Rovida E, Ivanovic Z, Praloran V, Olivotto M, Dello Sbarba P. The expansion of murine bone marrow cells preincubated in hypoxia as an in vitro indicator of their marrow-repopulating ability. *Leukemia*. 2000;14(4):735-739.
37. Cheloni G, Tanturli M. The Culture Repopulation Ability (CRA) Assay and Incubation in Low Oxygen to Test Antileukemic Drugs on Imatinib-Resistant CML Stem-Like Cells. *Meth Mol Biol*. 2016;1465:73-85.
38. Li S, Ilaria RL, JR, Million RP, Daley GQ, van Etten RA. The P190, P210, and P230 forms of the BCR/ABL oncogene induce a similar chronic myeloid leukemia-like syndrome in mice but have different lymphoid leukemogenic activity. *J Exp Med*. 1999;189(9):1399-1412.
39. Peng C, Li S. CML mouse model in translational research. *Meth Mol Biol*. 2010;602:253-266.
40. Wellmann S, Guschmann M, Griethe W, et al. Activation of the HIF pathway in childhood ALL, prognostic implications of VEGF. *Leukemia*. 2004;18(5):926-933.

41. Sharma N, Magistrini V, Piazza R, et al. BCR/ABL1 and BCR are under the transcriptional control of the MYC oncogene. *Mol Cancer*. 2015;14:132.
42. Abraham SA, Hopcroft LEM, Carrick E, et al. Dual targeting of p53 and c-MYC selectively eliminates leukaemic stem cells. *Nature*. 2016;534(7607):341-346.
43. Forristal CE, Wright KL, Hanley NA, Oreffo ROC, Houghton FD. Hypoxia inducible factors regulate pluripotency and proliferation in human embryonic stem cells cultured at reduced oxygen tensions. *Reproduction*. 2010;139(1):85-97.
44. Chen Y, Peng C, Abraham SA, et al. Arachidonate 15-lipoxygenase is required for chronic myeloid leukemia stem cell survival. *J Clin Invest*. 2014;124(9):3847-3862.
45. Jensen PO, Mortensen BT, Hodgkiss RJ, et al. Increased cellular hypoxia and reduced proliferation of both normal and leukaemic cells during progression of acute myeloid leukaemia in rats. *Cell Prolif*. 2000;33(6):381-395.
46. Rovida E, Peppicelli S, Bono S, et al. The metabolically-modulated stem cell niche: a dynamic scenario regulating cancer cell phenotype and resistance to therapy. *Cell Cycle*. 2014;13(20):3169-3175.
47. Welsh SJ, Williams RR, Birmingham A, Newman DJ, Kirkpatrick DL, Powis G. The thioredoxin redox inhibitors 1-methylpropyl 2-imidazolyl disulfide and pleurotin inhibit hypoxia-induced factor 1alpha and vascular endothelial growth factor formation. *Mol Cancer Ther*. 2003;2(3):235-243.
48. Tan C, Noronha RG de, Roecker AJ, et al. Identification of a novel small-molecule inhibitor of the hypoxia-inducible factor 1 pathway. *Cancer Res*. 2005;65(2):605-612.
49. Hudson CC, Liu M, Chiang GG, et al. Regulation of hypoxia-inducible factor 1alpha expression and function by the mammalian target of rapamycin. *Mol Cell Biol*. 2002;22(20):7004-7014.
50. Rapisarda A, Uranchimeg B, Sordet O, Pommier Y, Shoemaker RH, Melillo G. Topoisomerase I-mediated inhibition of hypoxia-inducible factor 1: mechanism and therapeutic implications. *Cancer Res*. 2004;64(4):1475-1482.
51. Kung AL, Wang S, Klco JM, Kaelin WG, Livingston DM. Suppression of tumor growth through disruption of hypoxia-inducible transcription. *Nat Med*. 2000;6(12):1335-1340.
52. Kung AL, Zabludoff SD, France DS, et al. Small molecule blockade of transcriptional coactivation of the hypoxia-inducible factor pathway. *Cancer Cell*. 2004;6(1):33-43.
53. Kong D, Park EJ, Stephen AG, et al. Echinomycin, a small-molecule inhibitor of hypoxia-inducible factor-1 DNA-binding activity. *Cancer Res*. 2005;65(19):9047-9055.

54. Sullivan R, Pare GC, Frederiksen LJ, Semenza GL, Graham CH. Hypoxia-induced resistance to anticancer drugs is associated with decreased senescence and requires hypoxia-inducible factor-1 activity. *Mol Cancer Ther.* 2008;7(7):1961-1973.
55. Schnitzer SE, Schmid T, Zhou J, Brune B. Hypoxia and HIF-1alpha protect A549 cells from drug-induced apoptosis. *Cell Death Diff.* 2006;13(9):1611-1613.
56. Petruzzelli R, Christensen DR, Parry KL, Sanchez-Elsner T, Houghton FD. HIF-2alpha regulates NANOG expression in human embryonic stem cells following hypoxia and reoxygenation through the interaction with an Oct-Sox cis regulatory element. *PLoS One.* 2014;9(10):e108309.
57. Covello KL, Kehler J, Yu H, et al. HIF-2alpha regulates Oct-4: effects of hypoxia on stem cell function, embryonic development, and tumor growth. *Genes Dev.* 2006;20(5):557-570.
58. Dang CV, Kim J-w, Gao P, Yustein J. The interplay between MYC and HIF in cancer. *Nat Rev.* 2008;8(1):51-56.
59. Gordan JD, Thompson CB, Simon MC. HIF and c-Myc: sibling rivals for control of cancer cell metabolism and proliferation. *Cancer Cell.* 2007;12(2):108-113.
60. Albajar M, Gomez-Casares MT, Llorca J, et al. MYC in chronic myeloid leukemia: induction of aberrant DNA synthesis and association with poor response to imatinib. *Mol Cancer Res.* 2011;9(5):564-576.
61. Fang ZH, Dong CL, Chen Z, et al. Transcriptional regulation of survivin by c-Myc in BCR/ABL-transformed cells: implications in anti-leukaemic strategy. *J Cell Mol Med.* 2009;13(8B):2039-2052.
62. Wainwright M. Acridine-a neglected antibacterial chromophore. *J Antimicrob Chemother.* 2001;47(1):1-13.

FIGURE LEGENDS

Figure 1. HIF-1 α was expressed in CML cells and ACF inhibited the increase of HIF-1 α target genes in low oxygen.

(A) Primary (CML case #4) or CML cell lines were lysed and total cell lysates subjected to immuno-blotting with the indicated antibodies. GAPDH expression was used as a loading control. Migration of molecular weight markers is indicated on the left (kDa). One representative experiment out of 3 is shown. (B, C) Cells were incubated at the indicated oxygen concentrations for 3 days. (B) Nuclear lysates were subjected to immuno-blotting with the indicated antibodies. Fibrillaritin was used to verify the equalization of protein loading. Migration of molecular weight markers is indicated on the left (kDa). One representative experiment out of 3 is shown. (C) Total cell lysates were subjected to immuno-blotting with the indicated antibodies. GAPDH was used to verify equalization of protein loading. Migration of molecular weight markers is indicated on the left (kDa). One representative experiment out of 3 is shown. (D) Cells were incubated for 2 days at the indicated oxygen concentrations, in the presence of 5 μ M ACF or 50 μ M YC1, or their solvents (PBS or DMSO, respectively). *CAIX*, *VEGF* or *HIF-1 α* mRNA were measured by qPCR. Data were normalized with respect to β -actin and expressed as fold-change with respect to the values obtained for time 0 (t0) cells. Values represent mean \pm S.D. of 3 independent experiments, each carried out in triplicate; vs t0: * $p \leq 0.05$, ** $p \leq 0.01$; vs 0.1% O₂ (PBS or DMSO), # $p \leq 0.05$, ## $p \leq 0.01$; n.s., not significant.

Figure 2. ACF induced apoptosis and suppressed c-MYC expression and stem cell potential in CML cells.

Cells were treated with PBS or 5 μ M ACF or 1 μ M IM and incubated at 0.1% O₂ for the indicated times (primary culture; LC1). (A) Viable cells were counted at the indicated times of LC1. Dashed line indicates the number of plated cells. Values represent mean \pm S.D. of data obtained from 3 independent experiments, each carried out in triplicate; * $p \leq 0.05$, ** $p \leq 0.01$. (B) Total cell lysates were subjected to immuno-blotting with the indicated antibodies. GAPDH was used to verify equalization of protein loading. Migration of molecular weight markers is indicated on the left (kDa). One representative experiment out of 3 is shown. (C) Cells were stained with annexin V-APC and analyzed by flow cytometry. Values represent mean \pm S.D. of data obtained from 3 independent experiments, each carried out in triplicate; * $p \leq 0.05$. (D) Total cell lysates were subjected to immuno-blotting with the indicated antibodies. GAPDH was used to verify equalization of protein loading. Migration of molecular weight markers is indicated on the left (kDa). One representative experiment and densitometric analysis of data from 4 independent experiments are shown; values represent mean \pm S.D.; vs PBS: * $p \leq 0.05$, ** $p \leq 0.01$; vs IM: # $p \leq 0.05$. (E) Cells were transferred from day-7 LC1 to drug-free normoxic secondary cultures (LC2) to determine the maintenance of stem cell potential in LC1 via the counting of viable cells at the indicated times of incubation in LC2. Values represent mean \pm S.D. of three independent experiments. (F) K562 cells stably transfected with shRNA against HIF-1 α (shHIF-1 α) or control shRNA were incubated in low-

oxygen LC1 for 7 days and then transferred to normoxic LC2, to count viable cells at the indicated times of incubation in LC2. Values represent mean \pm S.D. of 3 independent experiments. (**F, inset**) Cells from time-0 LC1 were lysed and subjected to immuno-blotting with the indicated antibodies. ERK1/2 was used to verify equalization of protein loading. Migration of molecular weight markers is indicated on the left (kDa). (**G**) Cells were treated with PBS or 5 μ M ACF from day 6 to day 9 of incubation in low-oxygen LC1 and then transferred to drug-free normoxic LC2 to count viable cells. Data, relative to the peak of LC2 repopulation (day 21), are expressed as fraction of the value obtained for PBS. Values represent mean \pm S.D. of data obtained from 4 independent experiments; * $p \leq 0.05$, ** $p \leq 0.01$.

Figure 3. IM did not interfere with the ACF-driven suppression of stem cell potential. Cells were treated with PBS or 5 μ M ACF or 1 μ M IM, alone or in combination (ACF+IM), and incubated at 0.1% O₂ (LC1). (**A**) Viable cells were counted at day 3 of LC1. Data are expressed as fraction of the value obtained for PBS. Values represent mean \pm S.D. of data obtained from 3 independent experiments; vs PBS: * $p \leq 0.01$; vs ACF: # $p \leq 0.05$; vs IM: § $p \leq 0.05$. (**B**) Cells were transferred from day-7 LC1 to drug-free normoxic secondary cultures (LC2), to determine the maintenance of stem cell potential in LC1 via the counting of viable cells at the indicated times of incubation in LC2. Values represent mean \pm S.D. of data obtained from 3 independent experiments.

Figure 4. ACF impaired stem cell potential and reduced colony formation ability of primary CML cells, but not normal cells. (**A**) Total (left) or CD34-enriched (right) light-density BMMC from CML patients or CD34-enriched light-density PBMC from normal healthy donors (NHD; right) were plated in methylcellulose-containing medium and treated as indicated from time 0 of incubation (PBS, vehicle for ACF or IM; DMSO, vehicle for DASA). Colony number was scored after 7 days. Values represent mean \pm S.D. of data obtained from experiments performed in duplicate; vs PBS: * $p \leq 0.05$, ** $p \leq 0.01$; vs DMSO: # $p \leq 0.05$, ## $p \leq 0.01$; n.s., not significant. (**B, C**) Light-density BMMC from 12 CML patients or light-density PBMC from normal healthy donors (NHD) were treated as indicated (PBS, vehicle for ACF or IM; DMSO, vehicle for DASA) and incubated at 0.1% O₂ (LC1). (**B**) Viable cells from CML patients were counted at day 3 (n=10) or day 7 (n=12) of incubation in low oxygen. Values represent mean \pm S.D.; * $p \leq 0.05$, ** $p \leq 0.01$. (**C**) Cells were transferred from day-7 LC1 to drug-free normoxic LC2 to determine the maintenance of stem cell potential in LC1 via the counting of viable cells at the indicated times of incubation in LC2. Values represent results from single experiments or mean \pm S.D. of data obtained in triplicate (CML #8).

Figure 5. ACF impaired serial colony formation and long-term culture-initiation abilities of primary CML cells. (**A**) Light-density BMMC from CML patients were plated in methylcellulose-containing medium (I) and treated as indicated from time 0 of incubation (PBS, vehicle for ACF or IM). After 7-14 days, colony number was scored and cells replated in secondary, tertiary or quaternary cultures (II, III, IV). Data are expressed as fraction of the value obtained for PBS-

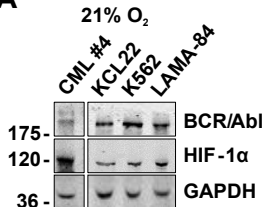
treated cultures. Values represent mean \pm S.D. of data obtained from experiments performed in duplicate; vs PBS: * $p \leq 0.05$, ** $p \leq 0.01$, n.s., not significant; vs IM: # $p \leq 0.05$, ## $p \leq 0.01$; vs ACF: § $p \leq 0.05$, §§ $p \leq 0.01$. **(B)** Light-density BMMC from CML patients were treated as indicated, incubated at 0.1% O₂ for 2 days and transferred to drug-free liquid cultures incubated at 21% O₂. After 5 weeks, cells were replated in methylcellulose-containing medium and colony number was scored after 14 days. Data are expressed as fraction of the value obtained for PBS-treated cultures. Values represent mean \pm S.D. of data obtained from experiments performed in duplicate; vs PBS: ** $p \leq 0.01$, n.s., not significant; ACF vs IM: ## $p \leq 0.01$.

Figure 6. ACF reduced CML development *in vivo*. CML mice were treated daily for 10 days with ACF or placebo and sacrificed after one additional day. **(A)** Spleen weight; dotted line: non-CML mice. Data are mean \pm S.D. of 8 mice per experimental variant; ** $p \leq 0.01$. **(B)** Hematoxylin-stained lung sections (40x magnification) from two representative mice per experimental variant (scale bar: 25 μ m). **(C)** Total PB white blood cells (WBC). Data are mean \pm S.D. from 8 mice per experimental variant; ** $p \leq 0.01$. **(D)** Percentage of GFP+ (leukemic) or GFP- (non-leukemic) myeloid cells (Gr-1+) in PB. Plots show data from one representative mouse per experimental variant. Means \pm S.D. from 8 mice per experimental variant are reported inside the plots.

Figure 7. ACF reduced CML development and decreased the number of long-term LSC *in vivo*. CML mice were treated daily for 10 days with ACF or placebo and sacrificed after one additional day. **(A)** Number of BM viable cells. **(B)** Relative number of GFP+ (leukemic) or GFP- (non-leukemic) cells in BM; data are expressed as fraction of the value obtained for placebo. **(C)** Apoptotic rate of GFP+ or GFP- BM cells. **(D)** Percentage (**left**) and relative number (**right**) of GFP+ or GFP-/LT-LSK cells in BM; data are expressed as fraction of the value obtained for placebo. (A-D) Values represent mean \pm S.D. of data from 8 mice per experimental variant; ACF- vs PBS-treated mice * $p \leq 0.05$; ** $p \leq 0.01$; *** $p \leq 0.001$; ACF-treated mice, GFP- vs GFP+ cells: § $p \leq 0.05$, §§ $p \leq 0.01$; n.s., not significant.

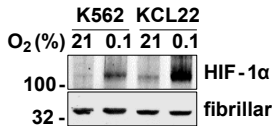
Figure 1

A

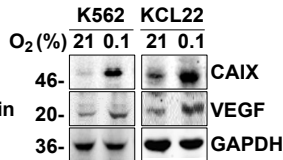


B

nuclear extracts



C



D

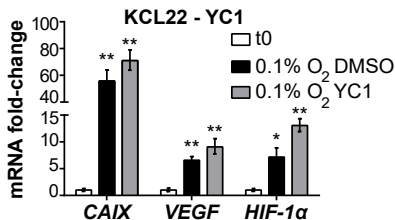
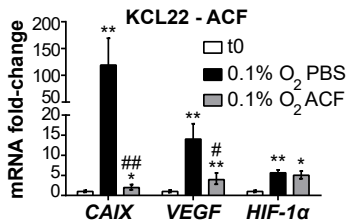
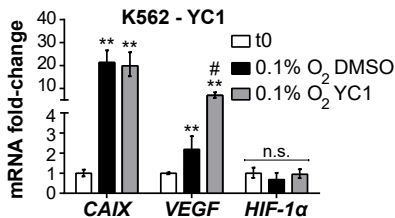
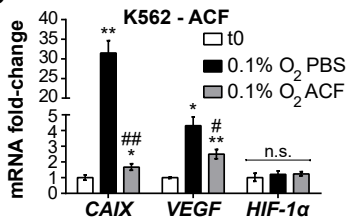


Figure 2

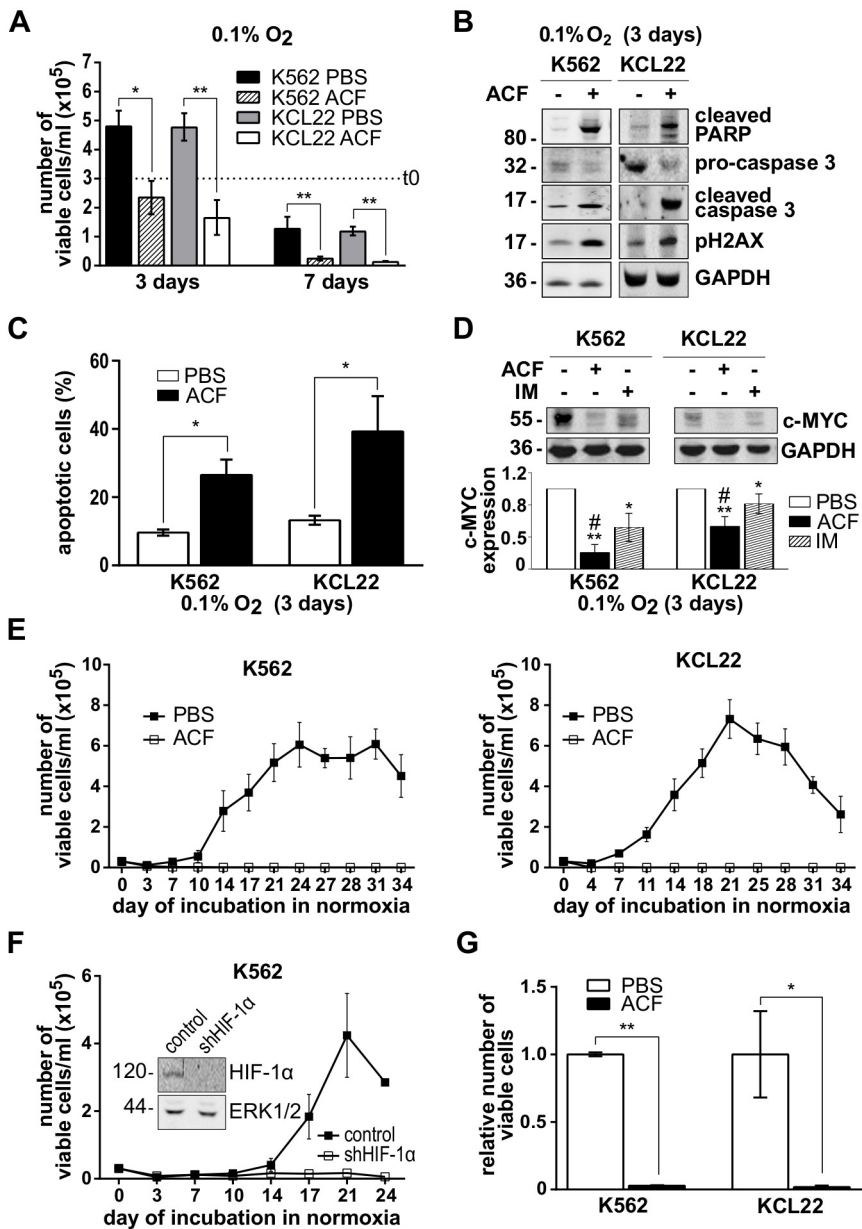
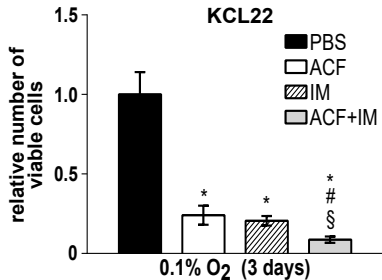
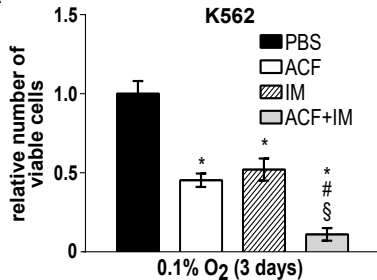


Figure 3

A



B

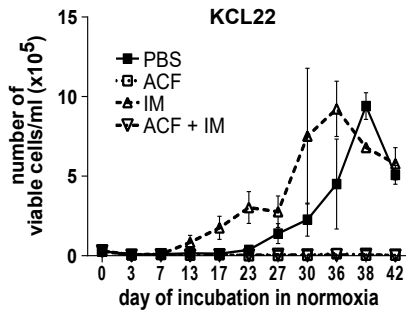
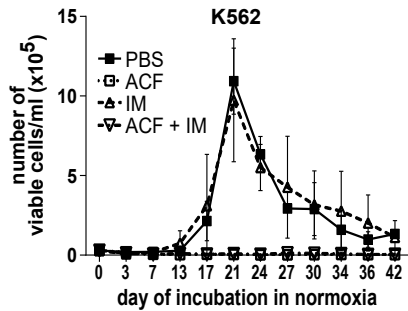


Figure 4

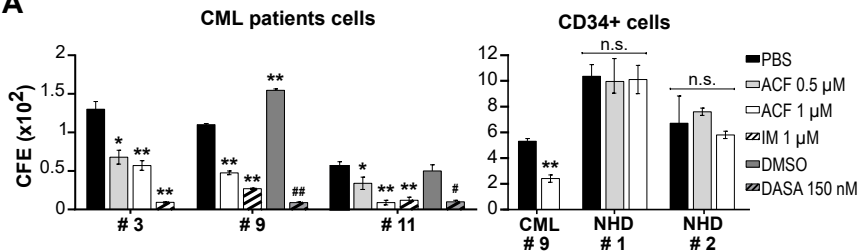
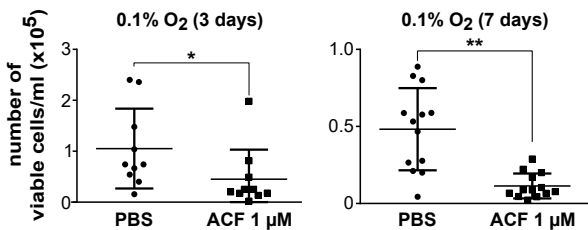
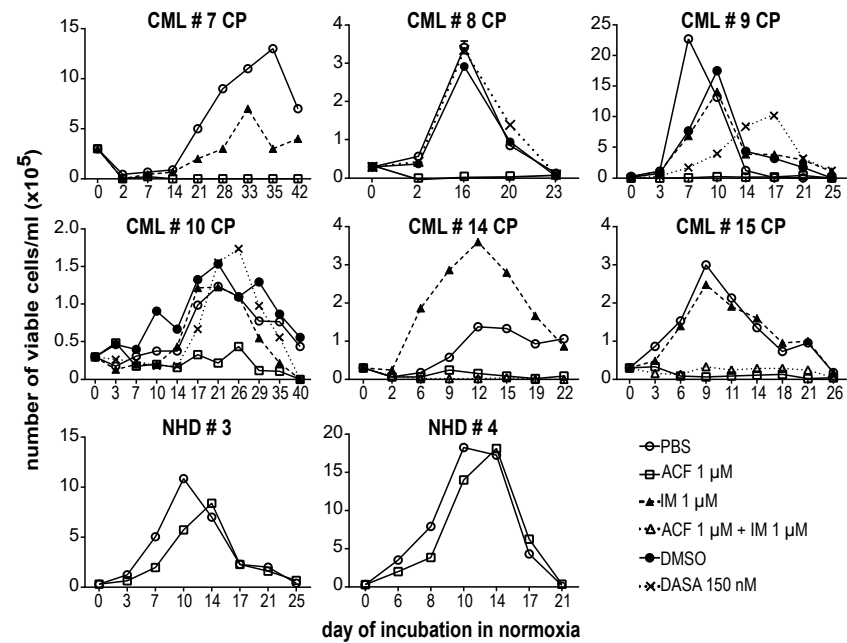
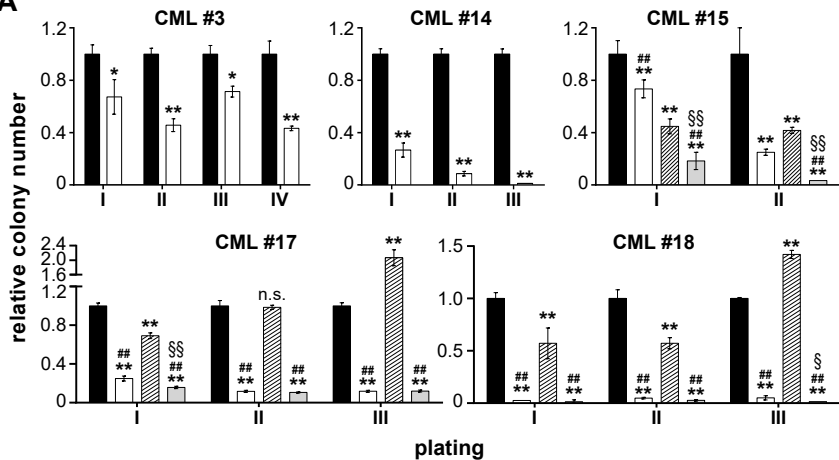
A

B

C


Figure 5

A



B

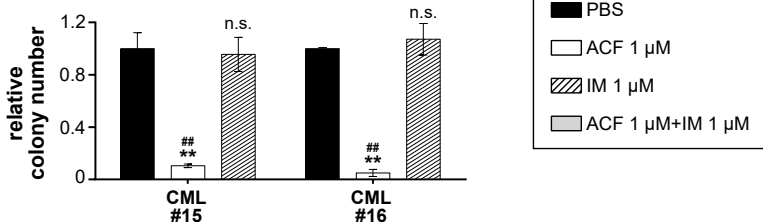
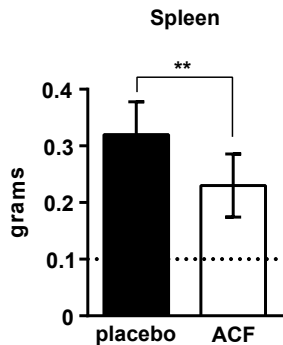
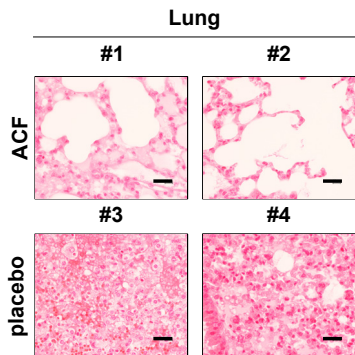


Figure 6

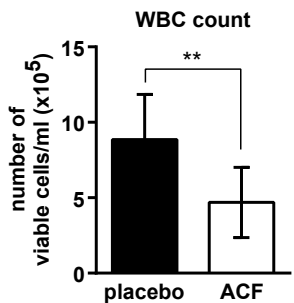
A



B



C



D

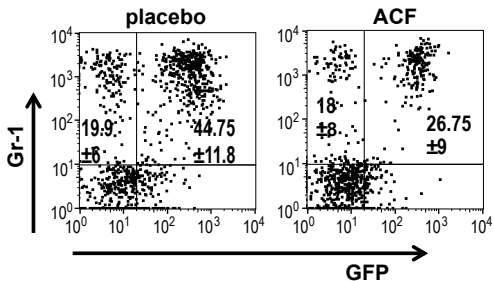
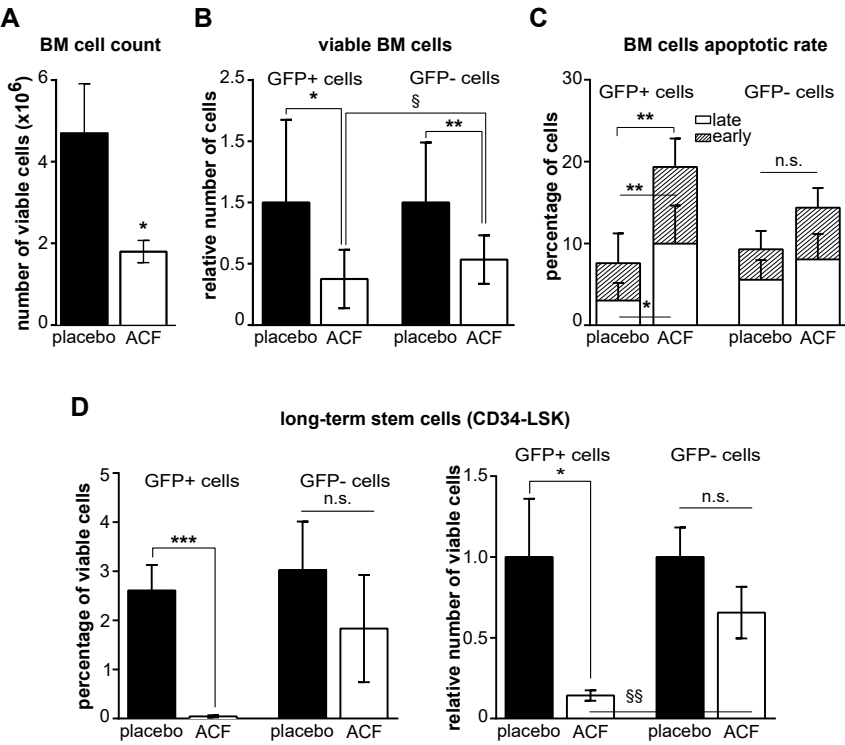


Figure 7



blood[®]

Prepublished online June 2, 2017;
doi:10.1182/blood-2016-10-745588

Targeting chronic myeloid leukemia stem cells with the hypoxia-inducible factor inhibitor acriflavine

Giulia Cheloni, Michele Tanturli, Ignazia Tusa, Ngoc Ho DeSouza, Yi Shan, Antonella Gozzini, Frédéric Mazurier, Elisabetta Rovida, Shaoguang Li and Persio Dello Sbarba

Information about reproducing this article in parts or in its entirety may be found online at:
http://www.bloodjournal.org/site/misc/rights.xhtml#repub_requests

Information about ordering reprints may be found online at:
<http://www.bloodjournal.org/site/misc/rights.xhtml#reprints>

Information about subscriptions and ASH membership may be found online at:
<http://www.bloodjournal.org/site/subscriptions/index.xhtml>

Advance online articles have been peer reviewed and accepted for publication but have not yet appeared in the paper journal (edited, typeset versions may be posted when available prior to final publication). Advance online articles are citable and establish publication priority; they are indexed by PubMed from initial publication. Citations to Advance online articles must include digital object identifier (DOIs) and date of initial publication.