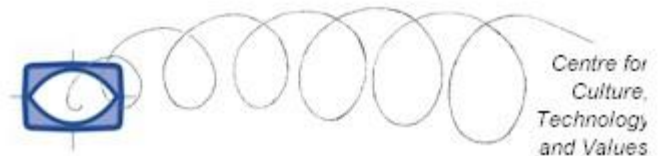


A Terrible Beauty is Born

Exploring the Relationship between
Changing Religious Attributes and
Emerging Social Attitudes in Europe
(a work in progress)



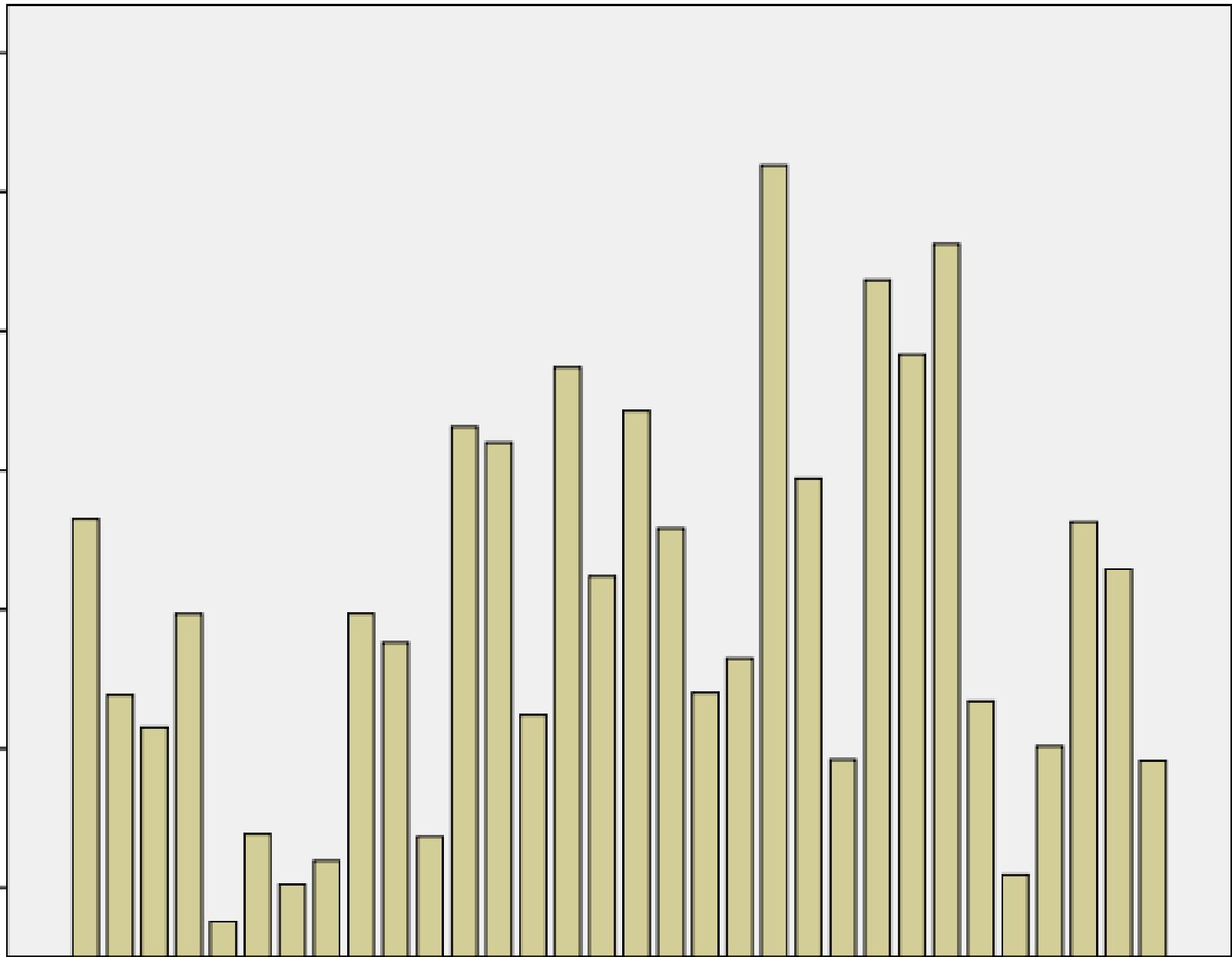
Mean importance of God in life

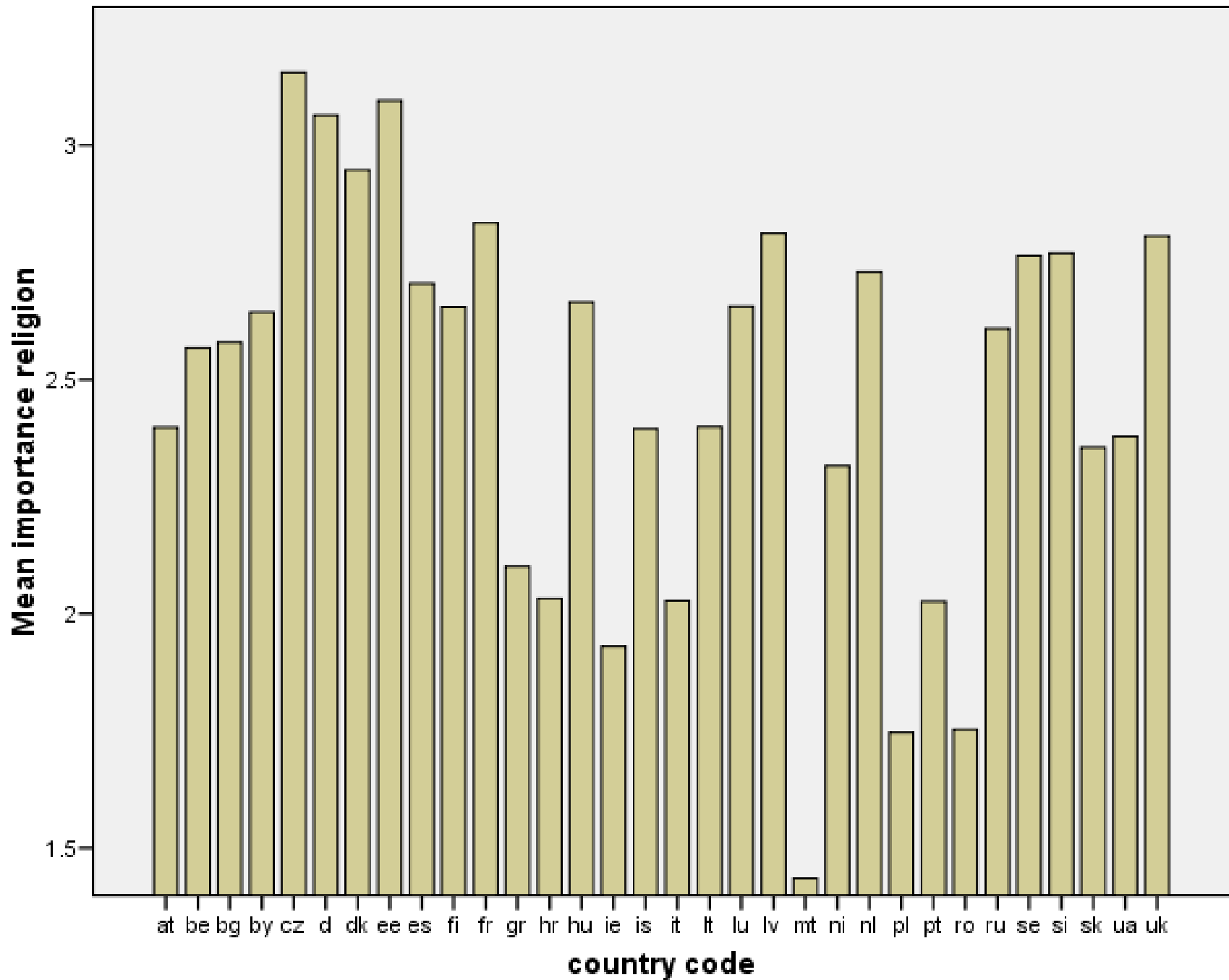
10
9
8
7
6
5
4

at be bg by cz d dk ee es fi fr gr hr hu ie is it lt lu lv mt ni nl pl pt ro ru se si sk ua uk

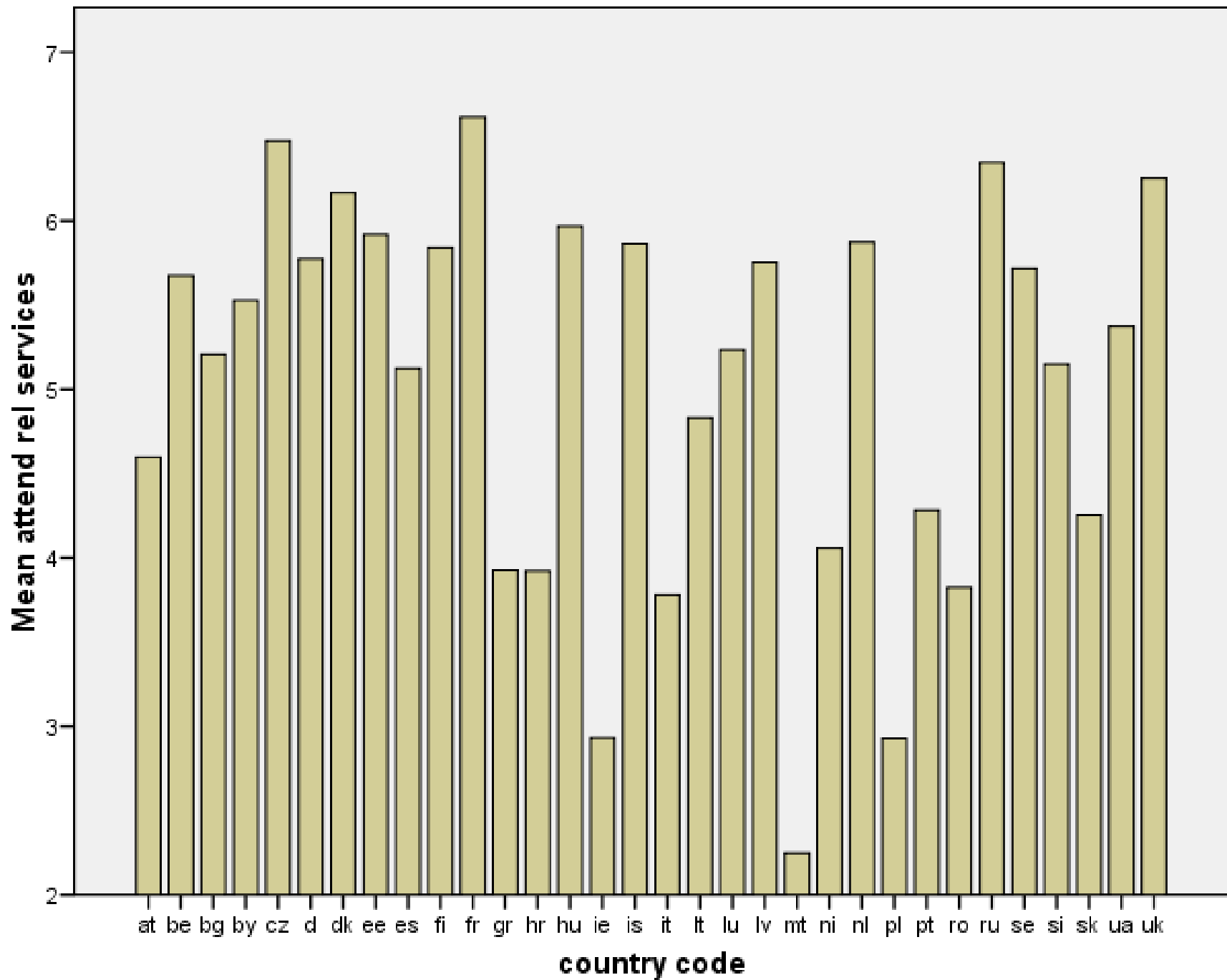
country code

for
ire,
jgy
ies

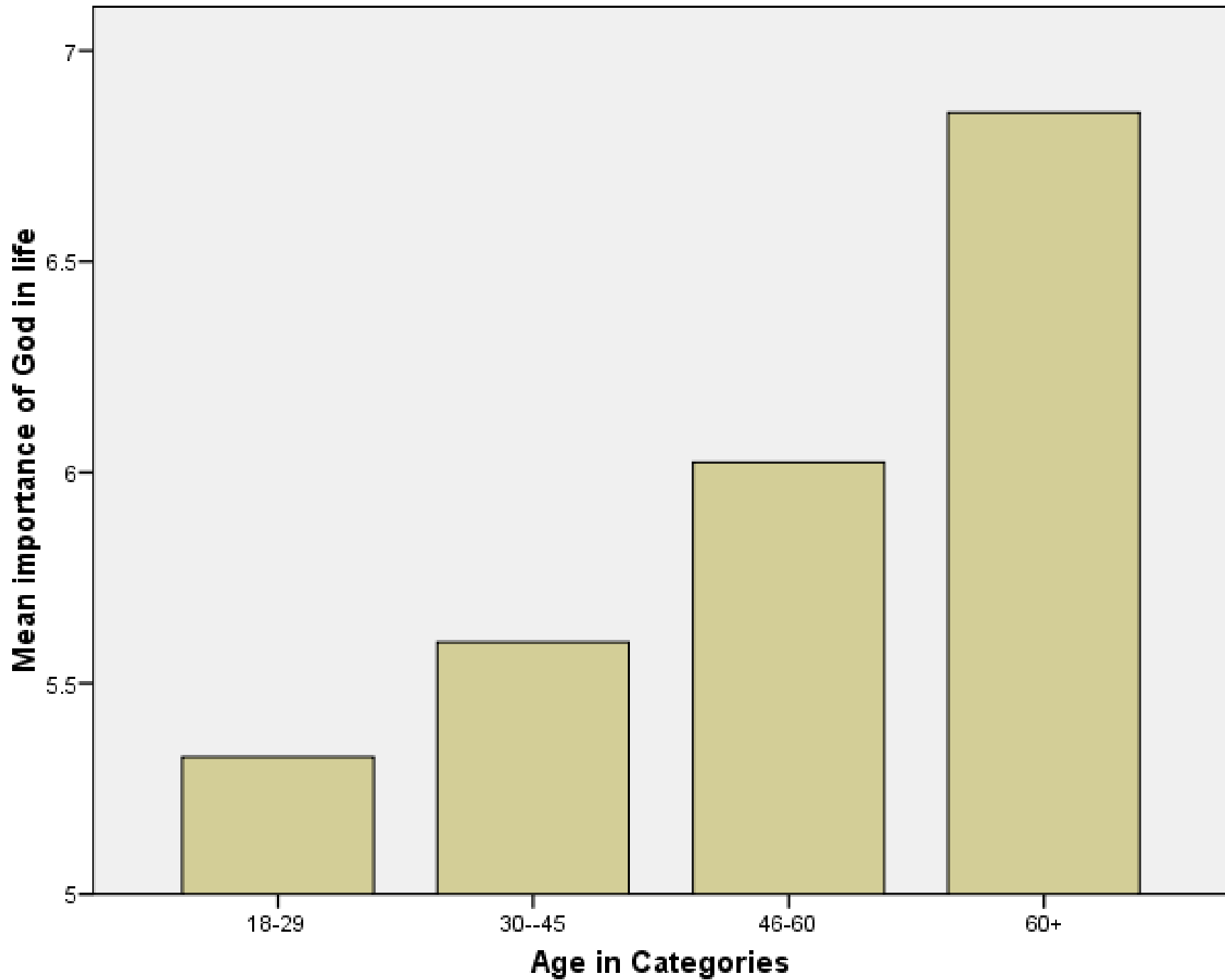


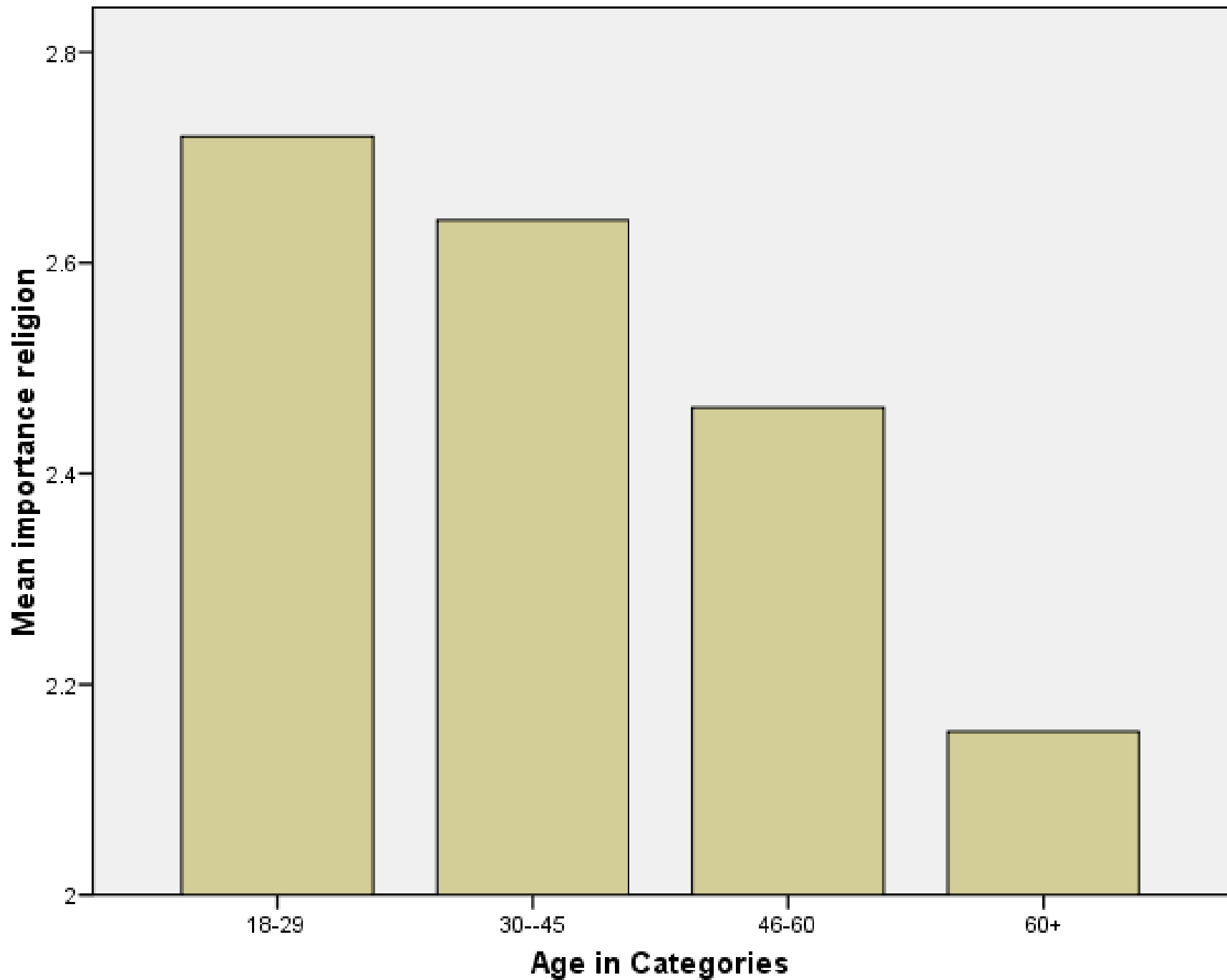


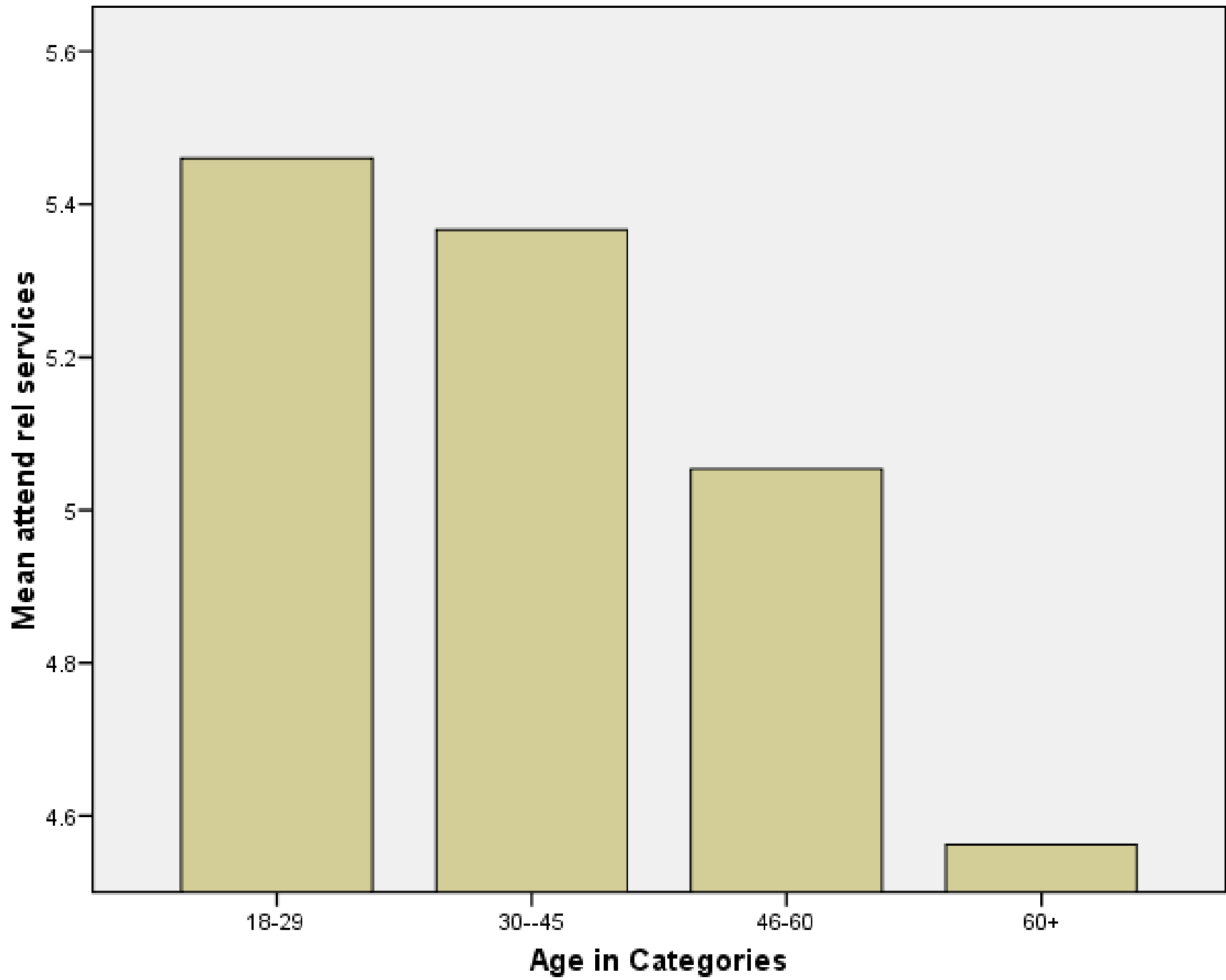
e for
ture,
logy
lues

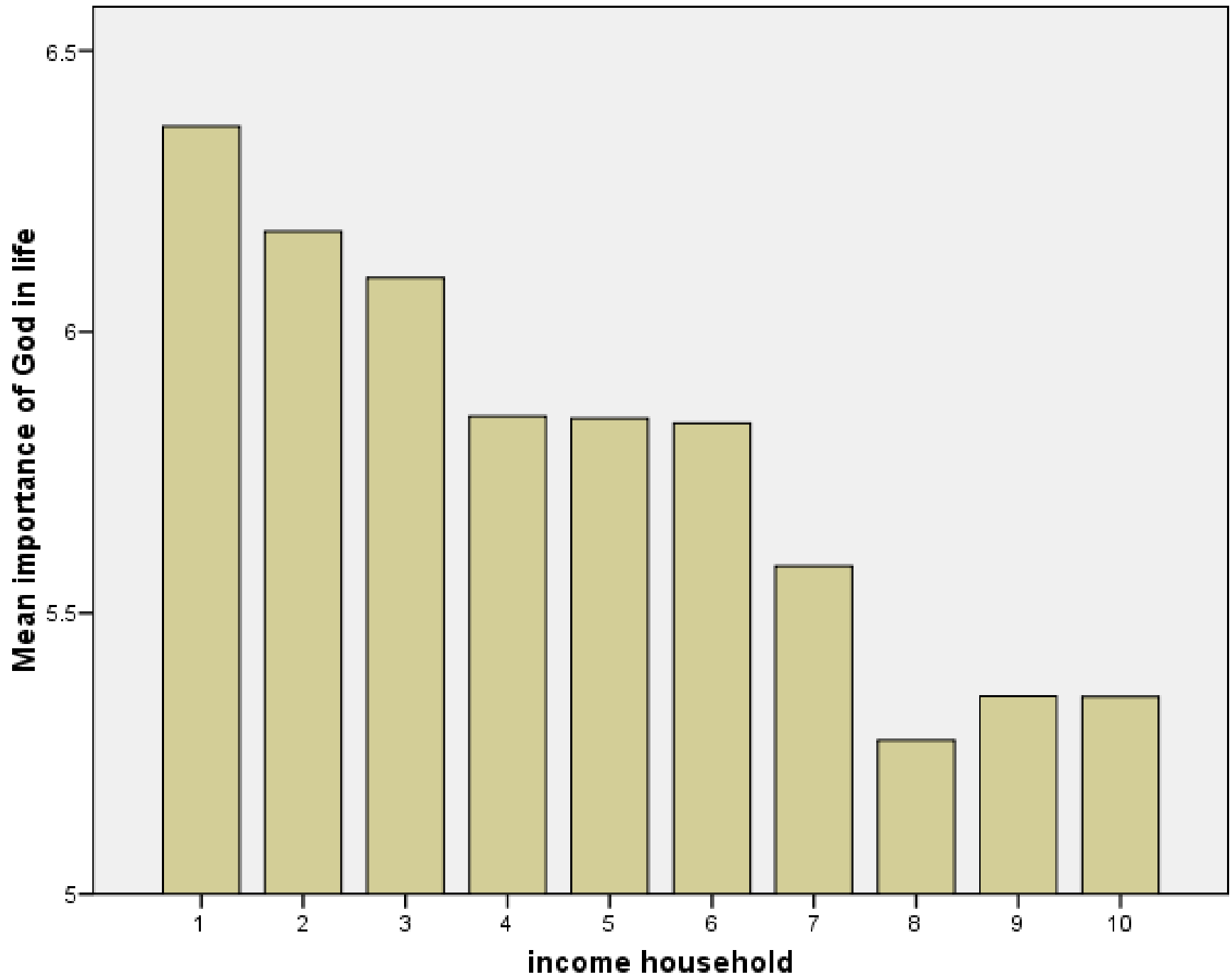


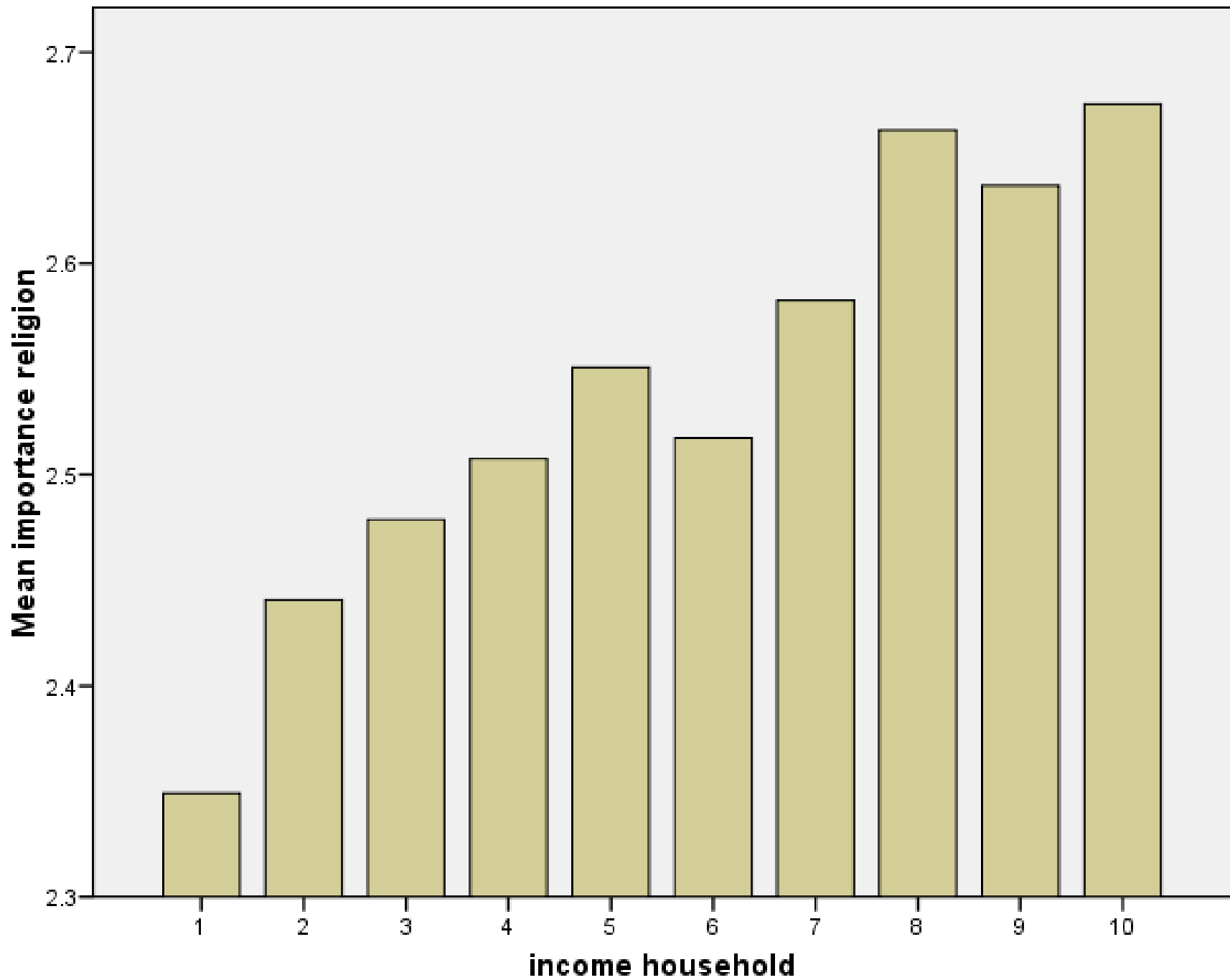
for
ire,
ogy
ies

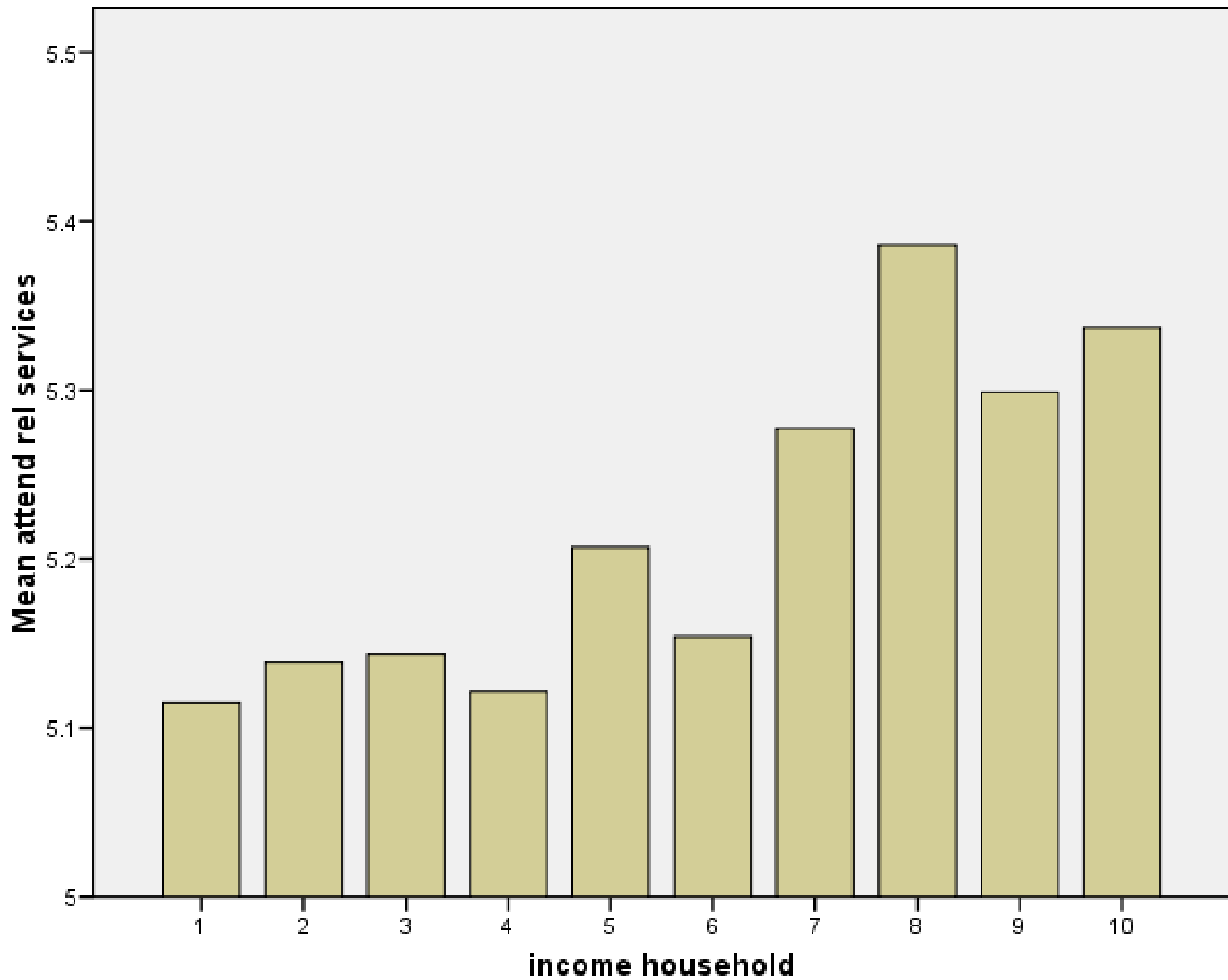


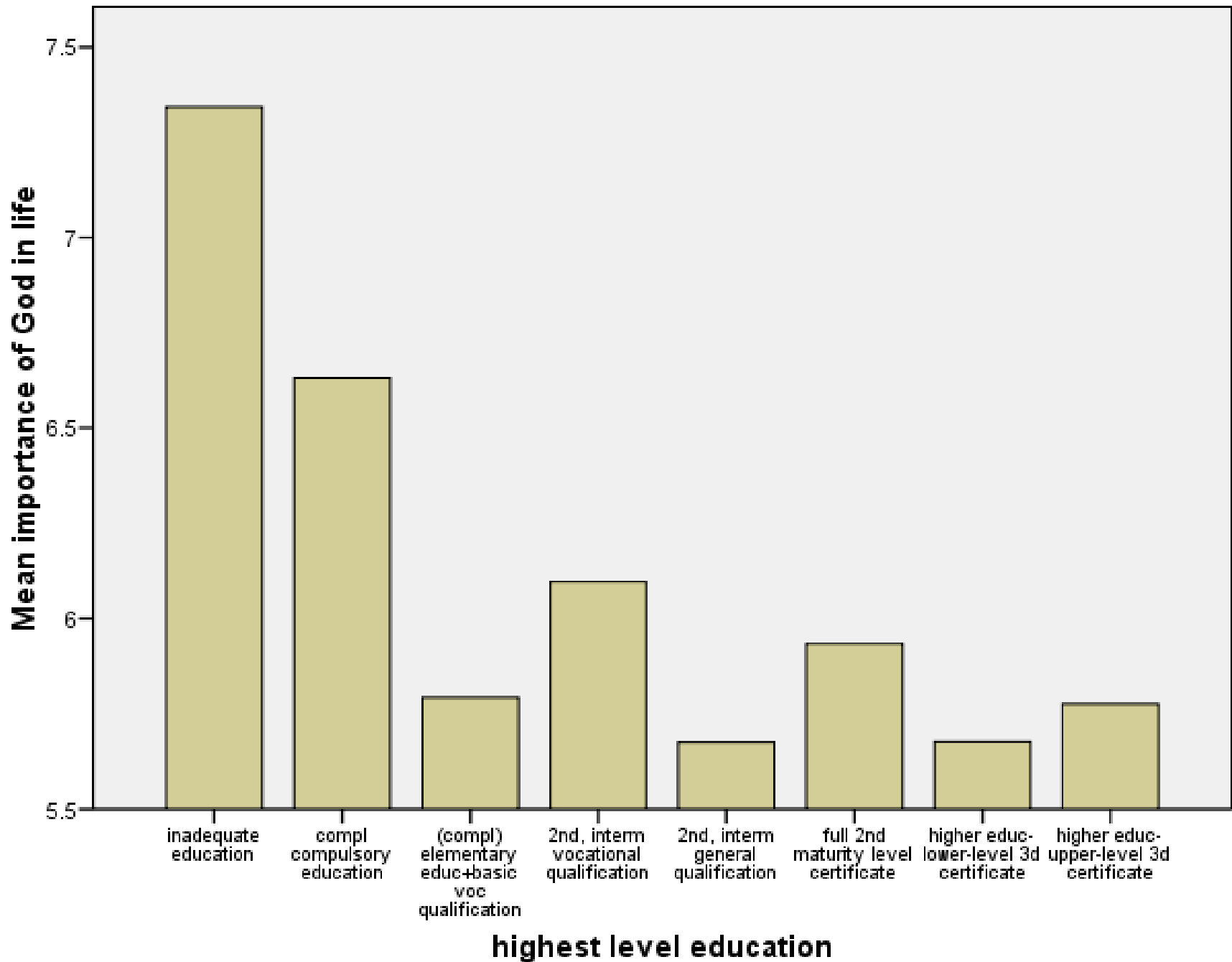


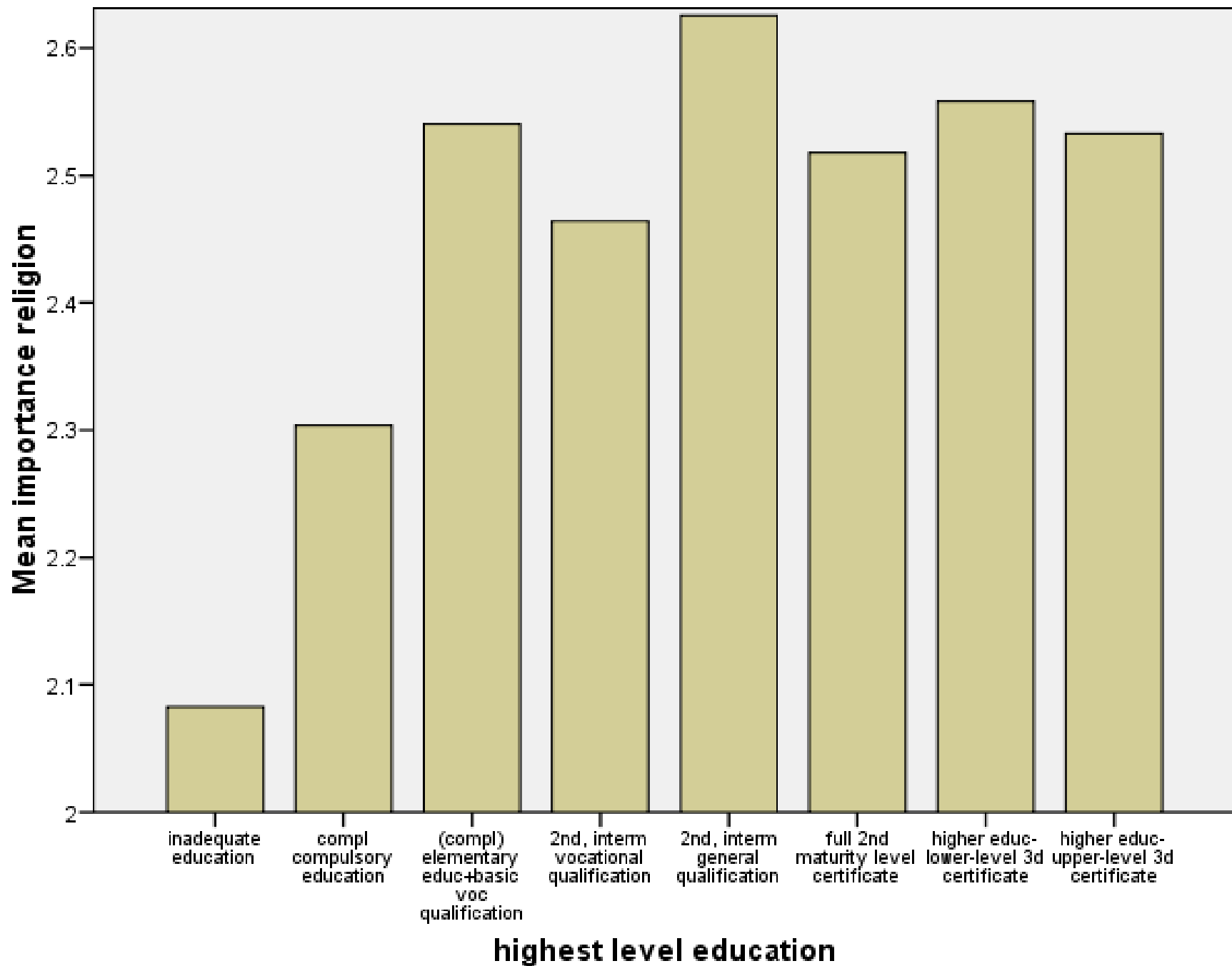


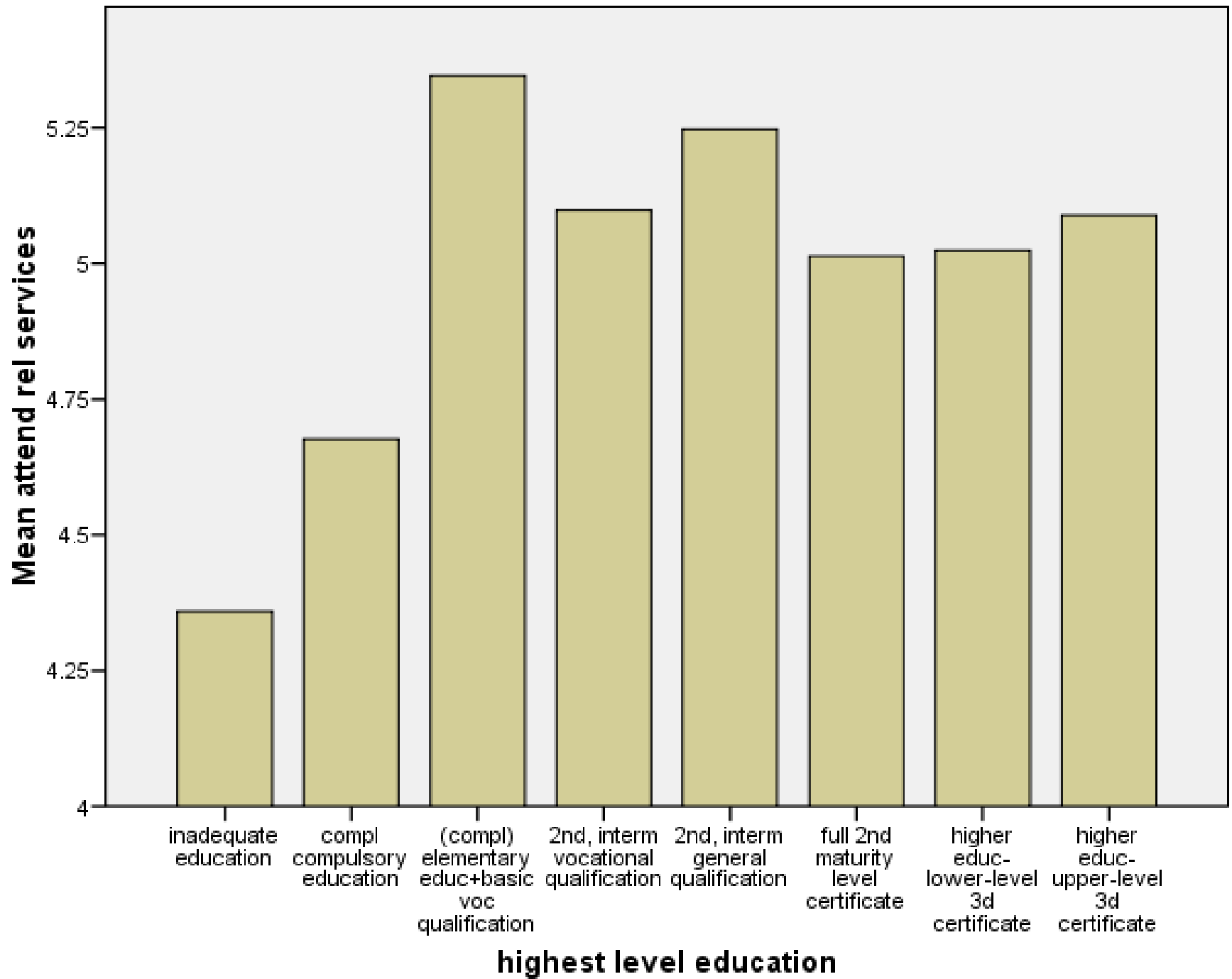


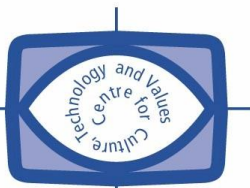








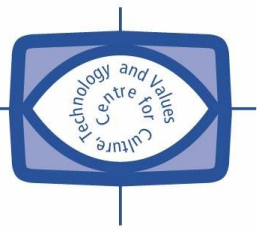




Correlations

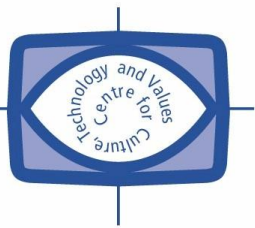
	importance religion	attend rel services	importance of God in life	Age in Categories	income household	highest level education
Spearmen's rho importance religion	1.000	.628**	-.713**	-.193**	.081**	.100**
	.	.000	.000	.000	.000	.000
	39223	38907	38177	38975	31076	33106
attend rel services	.628**	1.000	-.632**	-.133**	.028**	.059**
	.000	.	.000	.000	.000	.000
	38907	39566	38477	39321	31399	33360
importance of God in life	-.713**	-.632**	1.000	.170**	-.099**	-.114**
	.000	.000	.	.000	.000	.000
	38177	38477	38769	38533	30764	32730
Age in Categories	-.193**	-.133**	.170**	1.000	-.218**	-.299**
	.000	.000	.000	.	.000	.000
	38975	39321	38533	39663	31492	33441
income household	.081**	.028**	-.099**	-.218**	1.000	.331**
	.000	.000	.000	.000	.	.000
	31076	31399	30764	31492	31649	26381
highest level education	.100**	.059**	-.114**	-.299**	.331**	1.000
	.000	.000	.000	.000	.000	.
	33106	33360	32730	33441	26381	33636

** . Correlation is significant at the 0.01 level (2-tailed).



Scales

- Concern:
- Confidence
- Liberalism



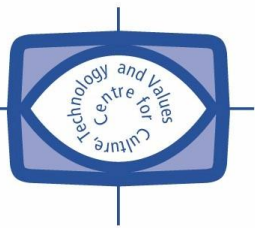
Concern

Item Statistics

	Mean	Std. Deviation	N
concerned with people neighbourhood	3.02	1.025	37493
concerned with people own region	3.21	.970	37493
concerned with fellow country men	3.08	.969	37493
concerned with europeans	3.53	.976	37493
concerned with human kind	3.14	1.090	37493
concerned with elderly	2.20	.965	37493
concerned with unemployed	2.63	1.011	37493
concerned with immigrants	3.37	1.030	37493
concerned with sick and disabled	2.31	.961	37493

Reliability Statistics

Cronbach's Alpha	N of Items
.871	9



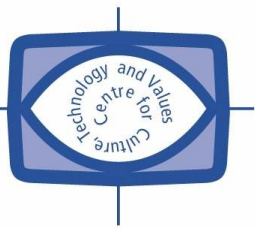
Confidence

Item Statistics

	Mean	Std. Deviation	N
confidence, church	2.50	.960	28825
confidence, armed forces	2.44	.837	28825
confidence, education system	2.18	.764	28825
confidence, the press	2.72	.779	28825
confidence, trade unions	2.79	.805	28825
confidence, the police	2.41	.835	28825
confidence, parliament	2.77	.815	28825
confidence, civil service	2.70	.760	28825
confidence, social security system	2.54	.812	28825
confidence, european union	2.68	.853	28825
confidence, united nations organisation	2.54	.866	28825
confidence, health care system	2.33	.826	28825
confidence, justice system	2.62	.847	28825

Reliability Statistics

Cronbach's Alpha	N of Items
.844	13



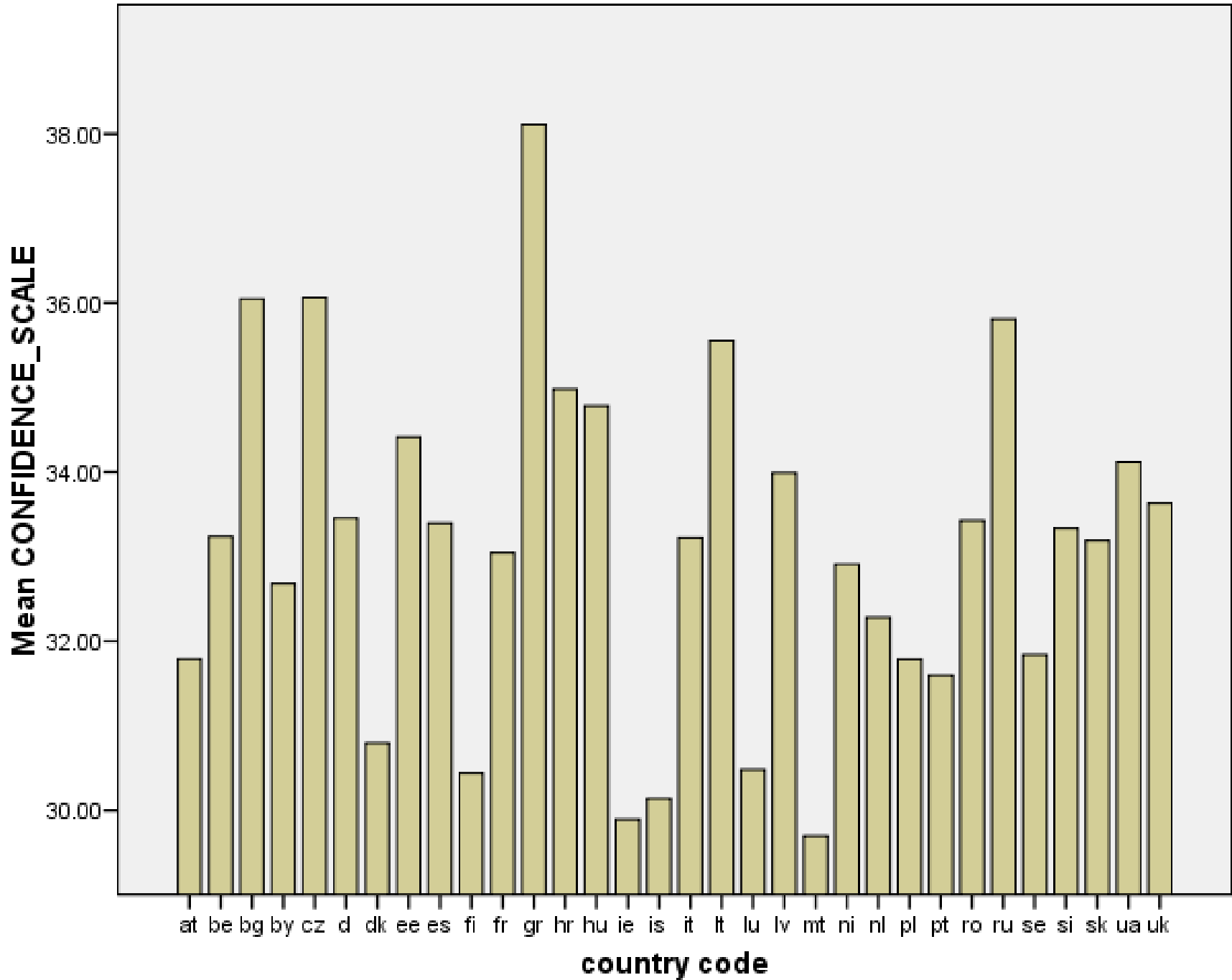
Liberalism

Item Statistics

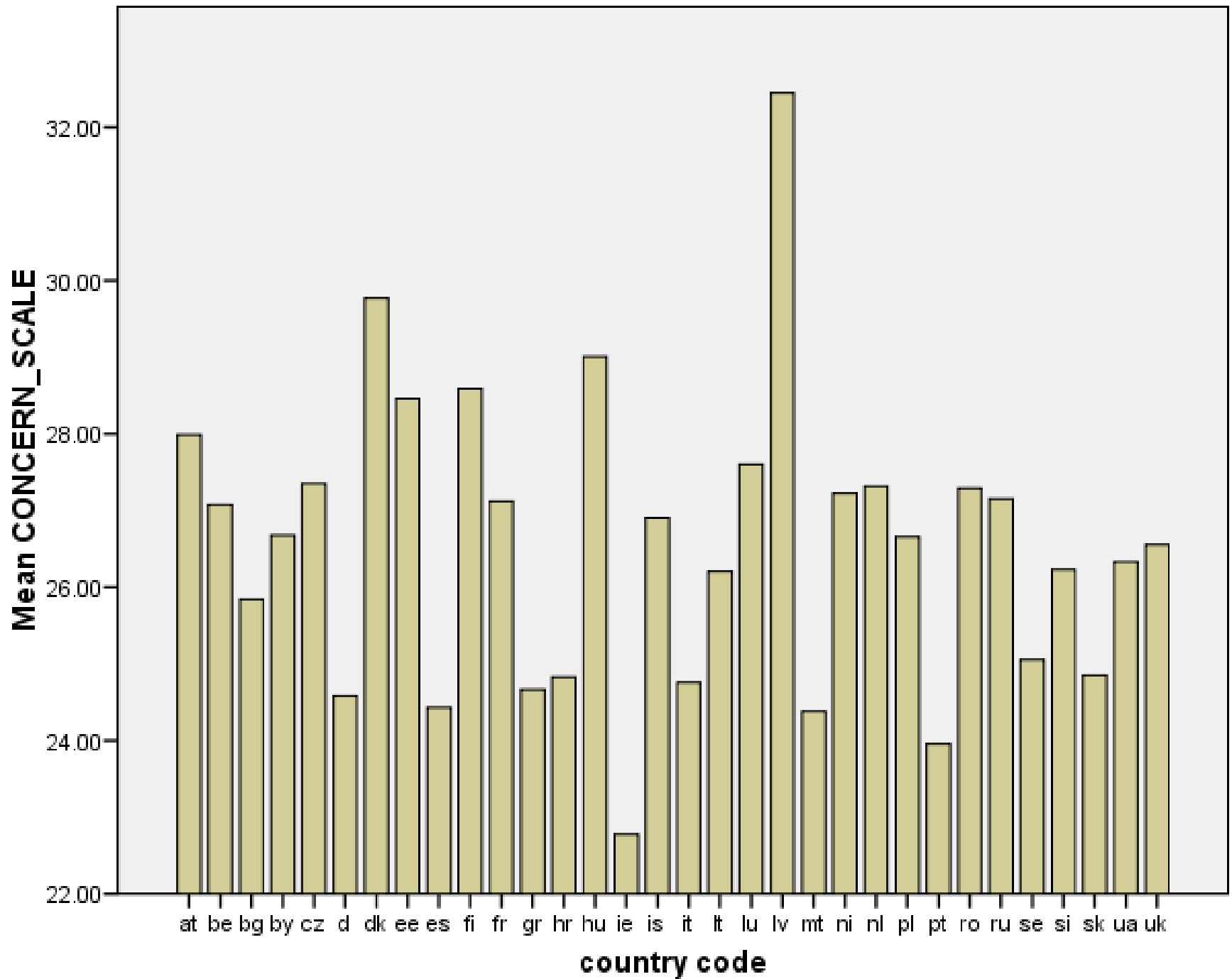
	Mean	Std. Deviation	N
claim state benefits	2.27	2.043	31786
cheating on tax	2.62	2.361	31786
joyriding	1.42	1.250	31786
taking soft drugs	1.88	1.896	31786
lying	2.83	2.232	31786
adultery	2.58	2.204	31786
accepting a bribe	1.83	1.691	31786
homosexuality	4.42	3.433	31786
abortion	4.62	3.032	31786
divorce	5.51	2.911	31786
euthanasia	4.83	3.243	31786
suicide	2.70	2.493	31786
throwing away litter	1.86	1.643	31786
driving under influence of alcohol	1.55	1.301	31786
paying cash	3.24	2.598	31786
having casual sex	3.18	2.686	31786
smoking in public places	3.49	2.713	31786
speeding over limit	2.35	1.982	31786

Reliability Statistics

Cronbach's Alpha	N of Items
.864	18



for
ire,
ogy
ies



Mean LIBERALISM_SCALE

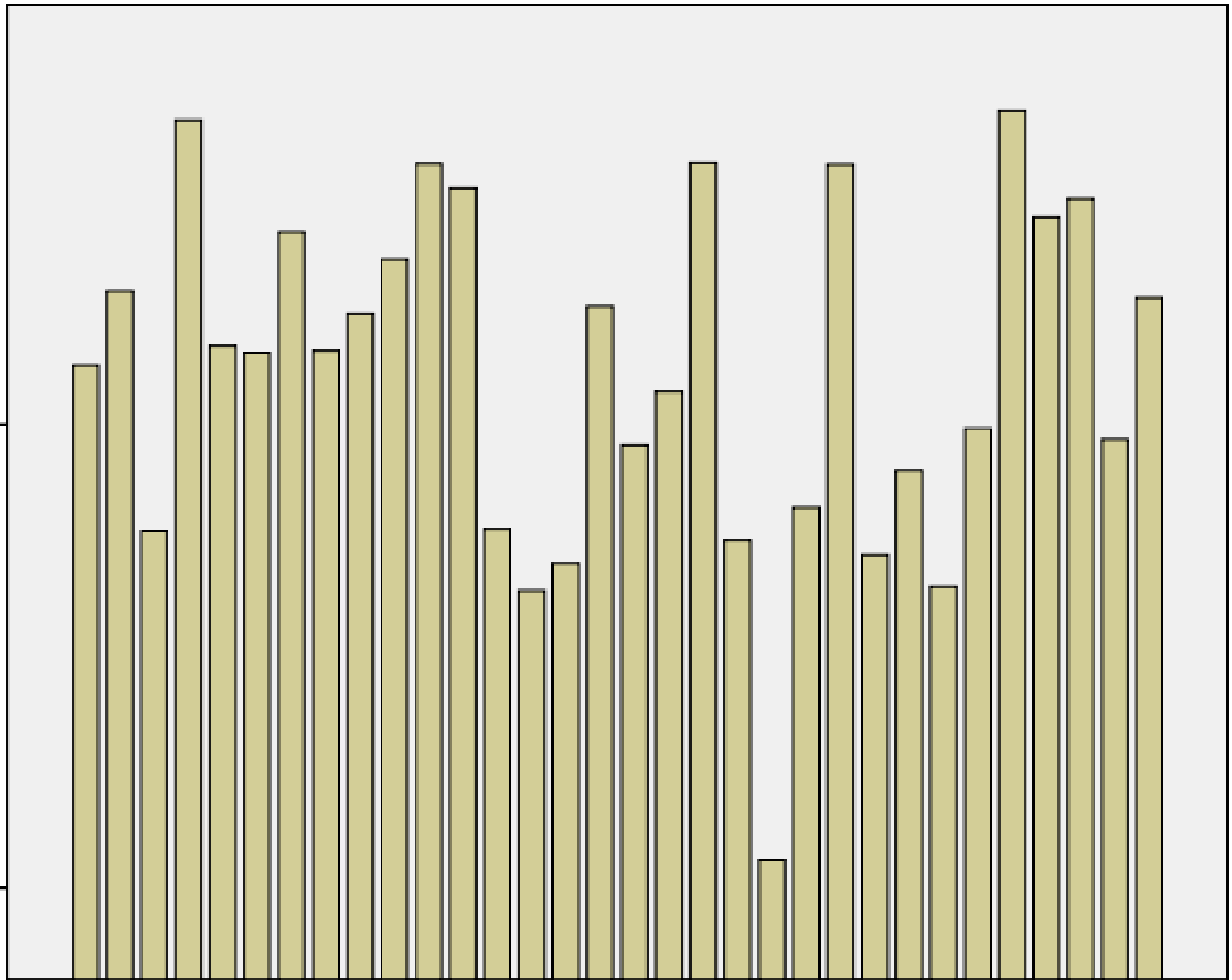
50.00

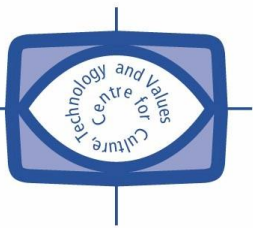
25.00

at be bg by cz d dk ee es fi fr gr hr hu ie is it lt lu lv mt ni nl pl pt ro ru se si sk ua uk

country code

for
ire,
ogy
ies

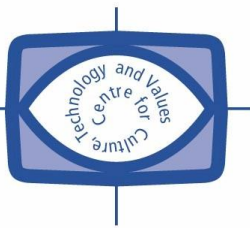




Correlations

		CONFIDEN CE_SCALE	CONCERN_ SCALE	LIBERALISM_ SCALE	Age in Categories
Spearman's rho	CONFIDENCE_SCALE	1.000	.148**	.161**	-.078**
		.	.000	.000	.000
		28825	27966	24945	28649
	CONCERN_SCALE	.148**	1.000	.151**	-.115**
	.000	.	.000	.000	
	27966	37493	30601	37264	
	LIBERALISM_SCALE	.161**	.151**	1.000	-.340**
	.000	.000	.	.000	
	24945	30601	31786	31595	
	Age in Categories	-.078**	-.115**	-.340**	1.000
	.000	.000	.000	.000	
	28649	37264	31595	39663	

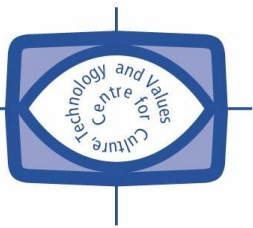
** . Correlation is significant at the 0.01 level (2-tailed).



Correlations

		CONFIDENCE_SCALE	CONCERN_SCALE	LIBERALISM_SCALE	income household
Spearman's rho	CONFIDENCE_SCALE	1.000	.148**	.161**	-.010
		.	.000	.000	.139
		28825	27966	24945	22939
	CONCERN_SCALE	.148**	1.000	.151**	-.010
		.000	.	.000	.076
		27966	37493	30601	29773
	LIBERALISM_SCALE	.161**	.151**	1.000	.169**
		.000	.000	.	.000
		24945	30601	31786	25461
	income household	-.010	-.010	.169**	1.000
		.139	.076	.000	.
		22939	29773	25461	31649

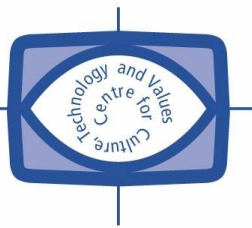
** . Correlation is significant at the 0.01 level (2-tailed).



Correlations

		CONFIDEN CE_SCALE	CONCERN_ SCALE	LIBERALISM_ SCALE	attend rel services
Spearman's rho	CONFIDENCE_SCALE	1.000	.148**	.161**	.205**
		.	.000	.000	.000
		28825	27966	24945	28634
	CONCERN_SCALE	.148**	1.000	.151**	.186**
		.000	.	.000	.000
		27966	37493	30601	37211
	LIBERALISM_SCALE	.161**	.151**	1.000	.345**
		.000	.000	.	.000
		24945	30601	31786	31556
	attend rel services	.205**	.186**	.345**	1.000
		.000	.000	.000	.
		28634	37211	31556	39566

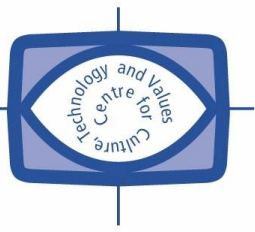
** . Correlation is significant at the 0.01 level (2-tailed).



Correlations

	CONFIDENCE_SCALE	CONCERN_SCALE	LIBERALISM_SCALE	importance of God in life
Spearman's rho				
CONFIDENCE_SCALE	1.000	.148**	.161**	-.197**
	.	.000	.000	.000
	28825	27966	24945	28301
CONCERN_SCALE	.148**	1.000	.151**	-.192**
	.000	.	.000	.000
	27966	37493	30601	36549
LIBERALISM_SCALE	.161**	.151**	1.000	-.386**
	.000	.000	.	.000
	24945	30601	31786	31165
importance of God in life	-.197**	-.192**	-.386**	1.000
	.000	.000	.000	.
	28301	36549	31165	38769

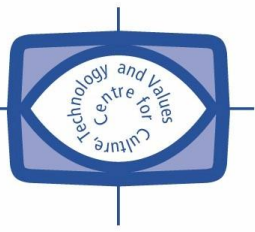
** . Correlation is significant at the 0.01 level (2-tailed).



Core Migrant issue variables

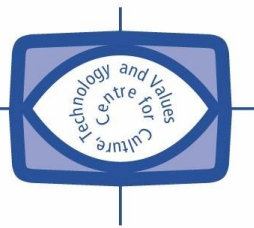
- Three relate to migrants admissions policy:
 - ...to what extent do you think [country] should allow people of the same race or ethnic group as most [country] people to come and live here ?
 - How about people of a different race or ethnic group from most [country] people?
 - How about people from the poorer countries outside Europe?
- These provide a scale ($\alpha=.88$) which we call OpenBorders
- Three relate to migrants already here:
 - Would you say it is generally bad or good for [country]'s economy that people come to live here from other countries?
 - Would you say that [country]'s cultural life is generally undermined or enriched by people coming to live here from other countries?
 - Is [country] made a worse or a better place to live by people coming to live here from other countries?
- These provide a scale ($\alpha=.89$) which we call ValueOthers





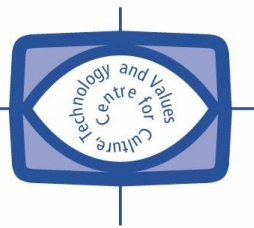
Core Media issue variables

- Six measures in all, for three media (TV, radio & newspaper) for news and non-news items:
 - On an average weekday, how much time, in total, do you spend watching television/ listening to the radio/ reading the newspapers?
 - And again on an average weekday, how much of your time watching television/ listening to the radio/ reading the newspapers is spent watching / listening to / reading news or programmes about politics and current affairs?
- The news/politics/current affairs exposure variables provide a scale ($\alpha=.73$) which we call News_Politics



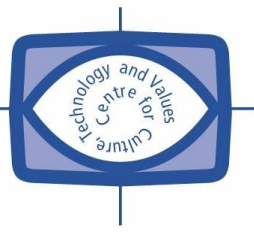
The role of age, education, income and attitudes for OpenBorders

Category		Age_Respondent	Years of full-time education completed	Household's total net income, all sources	How happy are you	How satisfied with life as a whole	How religious are you
1.00 Open Borders	Mean	43.4137	13.38	7.66	8.16	7.76	5.68
	N	498	488	384	496	497	495
	Std. Deviation	18.50384	3.459	2.145	1.647	1.838	2.713
2.00	Mean	46.8566	12.65	7.35	7.97	7.81	6.03
	N	990	972	769	987	990	986
	Std. Deviation	16.91403	3.457	2.215	1.572	1.600	2.253
3.00	Mean	49.0900	11.91	6.82	7.71	7.48	6.21
	N	700	674	553	696	696	692
	Std. Deviation	17.95907	3.162	2.217	1.973	1.986	2.352
Total	Mean	46.7875	12.59	7.25	7.93	7.69	6.01
	N	2188	2134	1706	2179	2183	2173
	Std. Deviation	17.73578	3.408	2.222	1.733	1.791	2.403



The role of age, education, income and attitudes for ValueOthers

Category		Age_Respondent	Years of full-time education completed	Household's total net income, all sources	How happy are you	How satisfied with life as a whole	How religious are you
1.00	Mean	45.7808	11.92	7.01	7.62	7.37	6.02
	N	780	757	593	778	775	771
	Std. Deviation	18.19180	3.176	2.270	2.000	2.030	2.350
2.00	Mean	46.0756	12.83	7.33	7.84	7.68	5.98
	N	516	503	396	516	515	514
	Std. Deviation	17.68352	3.176	2.204	1.595	1.630	2.295
3.00	Mean	47.2891	13.27	7.54	8.22	7.99	5.92
	N	837	822	671	834	836	834
	Std. Deviation	16.97944	3.527	2.156	1.430	1.510	2.533
Total	Mean	46.4440	12.67	7.30	7.91	7.69	5.97
	N	2133	2082	1660	2128	2126	2119
	Std. Deviation	17.60626	3.370	2.219	1.716	1.764	2.410



The role of religion and practice (controlling for age and education)

- The more religious, the less openness
- The more religious practice, the less openness
- The more religious practice, the less value of immigrants overall
- The more religious, the less news exposure
- The more religious practice, the less news exposure



Some last figures

	% Yes	% No	N
Religious Service at Birth	74.1	25.9	37793
Religious Service at Marriage	73.9	27.1	37755
Religious Service at Death	81.5	18.5	37852
Are you a religious person	66.1	33.9	37518
Belief in God	76.7	23.2	36363
Belief in Life after Death	52.8	47.2	32618
Belief in Hell	33.1	66.9	33436
Belief in Heaven	45.4	54.6	33514
Belief in Sin	61.5	38.5	35562
Belief in Telepathy	45.4	54.6	32374
Belief in Reincarnation	24.0	76.0	32005