



Technological University Dublin  
ARROW@TU Dublin

---

Assessment & Feedback Cases

Learning & Teaching Practice Exchange

---

2014

## Group Assignment

Andrea Curley

Technological University Dublin, [Andrea.F.Curley@TUDublin.ie](mailto:Andrea.F.Curley@TUDublin.ie)

Follow this and additional works at: <https://arrow.tudublin.ie/ltcassess>

 Part of the [Higher Education Commons](#)

---

### Recommended Citation

Curley, A. (2014). *Group Assignment*. Learning, Teaching & Technology Centre, Technological University Dublin.

This Other is brought to you for free and open access by the Learning & Teaching Practice Exchange at ARROW@TU Dublin. It has been accepted for inclusion in Assessment & Feedback Cases by an authorized administrator of ARROW@TU Dublin. For more information, please contact [yvonne.desmond@tudublin.ie](mailto:yvonne.desmond@tudublin.ie), [arrow.admin@tudublin.ie](mailto:arrow.admin@tudublin.ie), [brian.widdis@tudublin.ie](mailto:brian.widdis@tudublin.ie).



This work is licensed under a [Creative Commons Attribution-Noncommercial-Share Alike 3.0 License](#)



# Assessment & Feedback Use Cases

## GROUP ASSIGNMENT

**Author:** Andrea Curley

**Date:** 2014

This use case describes how one assessment method was designed and implemented by a lecturer or a group of lecturers in DIT. The use case was compiled from an interview conducted as part of **DIT's RAFT project (2013-14)**, the aim of which was to provide a database of assessment practices designed and implemented by academic staff across DIT.



 [bit.ly/33TOYld](https://bit.ly/33TOYld)

 [tudublin\\_lttc](https://twitter.com/tudublin_lttc)

[dit.ie/aadlt/lttc/](https://dit.ie/aadlt/lttc/)

## Lecturer

Andrea Curley

## Programme and year on which assessment was offered

BSc Computing, Year 2

## Description

Groups of 4-5 students are given a topic. They must identify a product and research and design it.

## What have you found are the advantages of using this form of assessment?

- Students are given assignment in stages so are not overwhelmed
- Students learn from each other
- Students utilise soft skills – organisation, report-writing and presentation

## What have you found are the dis-advantages of using this form of assessment?

- Requires extensive amount of work prior and during assignments
- Groups are not always cohesive
- Groups need to be monitored closely

## Alternatives

Individual assignment using a case study

## Assessment in Practice

Suitable for group work. Organisation becomes more difficult as class sizes increase though classes up to 100 students have been catered for previously. However, it is more effective up to 60 students max.

## Assessment Time

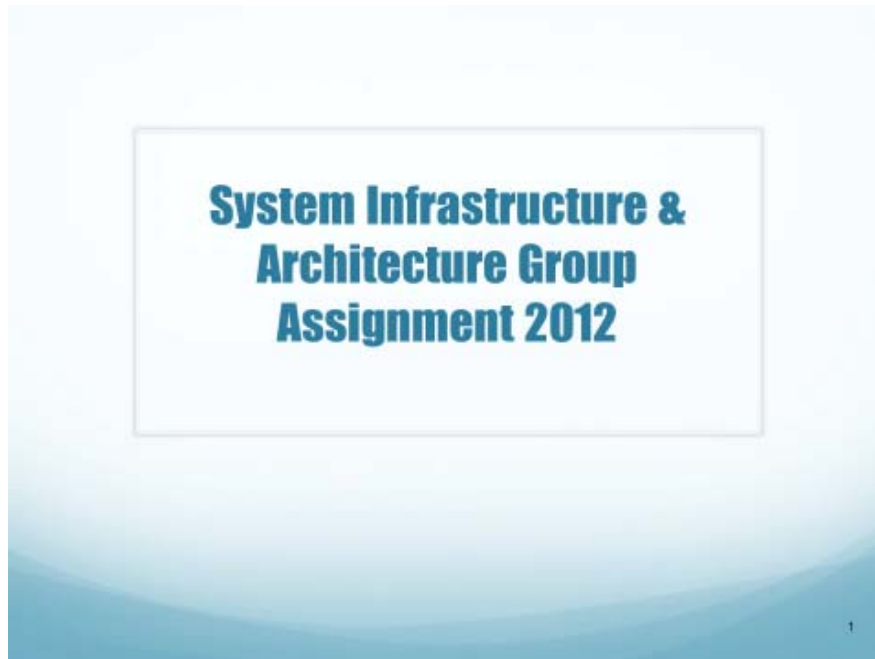
- Preparation time – significant and may adjust according to how the students are coping with the assignment
- Student time to complete – 3 weeks, with assignment given out in 3 stages
- Marking time
- Ease of Feedback – significant feedback through monitoring throughout assignment, feedback when presented at end and written group feedback with results.

---

## Additional Resources (see all resources below)

- [Assignment Overview](#)
- [Assignment Week 1](#)
- [Assignment Week 2](#)
- [Assignment Week 3](#)
- [Demo Marking Sheet](#)
- [Student Planning Sheet](#)

## RESOURCE 1: Assignment Overview



### What does the assignment entail?

- Groups of 3 to 4.
- 3 week assignment
  - Wednesday lecture – new questions given out
  - Friday 1 hour lab
- Attendance is compulsory for these 2 hours.
- Performance in this class & labs is graded.

## What does the assignment entail?

- Each group has their own Wiki in Webcourses.
- All work, both rough and formal should be done here => central repository.

## How is fairness ensured?

- The wiki will be checked to see how often group members contributed.
- Performance within class is assessed.
- Evaluations are an individual piece of work.

**Marks within a group can differ up to 60%**

## Your WIKI ...

Each group has a WIKI on Webcourses.

This is a **shared resource** which you all should contribute to.

Images, documents ....can be uploaded to it.

If you do not have access to a WIKI or have access to the wrong one, please let me know!

## Which lab am I in?

Groups 1-6 – 1-006 (11-12)

Groups 7-10 – 1-006 (12-1)

Groups 11-14 – 1-005 (12-1)

Please note your time down!!

## Your assignment

You need to choose any of the following:

- Website
- App
- Device e.g., mobile phone, Sat Nav ...
- External systems e.g., ATM machine, parking machine .....
- .....

## Your assignment topic

- |                         |             |
|-------------------------|-------------|
| 1. News                 | 8. Children |
| 2. Entertainment & Arts | 9. Business |
| 3. Sport                | 10. Health  |
| 4. Education            | 11. Finance |
| 5. Finance              | 12. Music   |
| 6. Technology           | 13. Food    |
| 7. Travel               | 14. TV      |



## RESOURCE 2: ASSIGNMENT 2

### System Infrastructure & Architecture

#### Group Assignment - Week 2

1. Identify your *functional requirements* (at least 5). Highlight why your group thinks that each of these requirements are appropriate (at least 300 words). Refer back to your research and requirement elicitation methods.
2. Identify your *non-functional requirements* (at least 4). Highlight why your group thinks that each of these requirements are appropriate (at least 300 words). Refer back to your research and requirement elicitation methods.

#### Requirement Specification

3. Complete a *requirements specification matrix*.
4. Draw a *use-case diagram*. Discuss how this relates to the information in your requirement specification matrix.
5. Each student in the group should pick one primary use-case and do a *use-case narrative* of it. The student's name should appear **with** their use-case narrative in the project report, as this will be marked individually.

#### Requirement Validation & Verification

6. Create a *simple checklist* to validate the requirements that you have derived. This checklist should reference your description, the results of your requirements elicitation methods, your requirement specification matrix and your use-case diagram/narratives. (There should be at least 6 checks).
7. Complete the checklist giving an explanation on each check (at least 50 words per check). Outline what needs to be changed.
8. Each student should create two test-cases for their use-case chosen in Q5. The test-cases should be labeled in the project report, with the student's name that has created it, as this will be marked individually.
9. Each student should pick one non-functional requirement and write one test-case for the chosen non-functional requirement. The test-cases should be labeled in the project report, with the student's name that has created it, as this will be marked individually.

## RESOURCE 3: ASSIGNMENT 3

### System Infrastructure & Architecture

#### Group Assignment - Week 3

1. Using at least **two** books and **one** internet source, fill in the following matrix:

	<b>What are the main features of this model? (At least 300 words)</b>	<b>Advantages of this model (At least 100 words)</b>	<b>Disadvantages of this model (At least 100 words)</b>
Waterfall			
Spiral			
Rational Unified Process (RUP)			
Extreme Programming (XP)			

2. State the **two** books and **one** internet source that you used in the previous question.
3. Which is the most suitable methodology for your project and why? (at least 500 words)

## RESOURCE 4: Demo Marking Sheet

S3:	RESULT:	
S4:	RESULT:	
S5:	RESULT:	
<b>Criteria</b>	<b>Comments</b>	<b>Marks</b>
<b>WEEK 1 – 24%</b>		
Description		/5
Literature research		/5
Other research areas		/1
Reasons for go ahead		/1
Plan for RE 1		/4
Plan for RE 2		/4
Implementation of RE1		/1
Implementation of RE2		/1
Results of RE1		/1
Results of RE2		/1
<b>WEEK 2 – 37%</b>		
Functional Req & reasons		/4
Non-Functional Req & reasons		/3
Requirement Specification Matrix		/8
Use-Case Diagram		/6
Use-Case Narratives	S1: S2: S3: S4: S5:	/4
Simple checklist		/4
6-10 Functional test-cases	S1: S2: S3: S4: S5:	/6
3-5 Non-Functional test-cases	S1: S2: S3: S4: S5:	/2
<b>WEEK 3 – 13%</b>		
Matrix of all methodologies		/8
2 books and 1 internet source		/3
Chosen methodology		/2
<b>DOCUMENTATION/ATTENDANCE – 26%</b>		
In proper format - TOC, Intro/Concl		/1
Presentation	S1: S2: S3: S4: S5:	/4
Individual evaluations	S1: S2: S3: S4: S5:	/9
Attendance/Performance	S1: S2: S3: S4: S5:	/12

## RESOURCE 5: Student Planning Sheet

<b>Group Number:</b>
<b>Week No:</b>
<b>Team Members:</b>

**What do we need to do or know?**

**What do I have to do?**

Team Member	What am I going to do?		
	Wednesday	Friday	Before next week