



Technological University Dublin  
**ARROW@TU Dublin**

---

Articles

School of Biological Sciences

---

2017

## Longer-Term Impact of High and Low Temperature on Mortality: An International Study to Clarify Length of Mortality Displacement

Ben Armstrong

*London School of Hygiene and Tropical Medicine*

Michelle Bell

*School of Forestry and Environmental Studies, Yale University*

Pat Goodman

*Technological University Dublin, Pat.Goodman@tudublin.ie*

Follow this and additional works at: <https://arrow.tudublin.ie/scschbioart>

 Part of the [Environmental Sciences Commons](#)

---

### Recommended Citation

Armstrong, B., Bell, M. & Goodman, P. (2017). Longer-Term Impact of High and Low Temperature on Mortality: An International Study to Clarify Length of Mortality Displacement. *Environmental Health Perspectives*, vol. 125, no. 10. Environ Health Perspect. 2017 Oct 27;125(10):107009. doi: 10.1289/EHP1756.

This Article is brought to you for free and open access by the School of Biological Sciences at ARROW@TU Dublin. It has been accepted for inclusion in Articles by an authorized administrator of ARROW@TU Dublin. For more information, please contact [yvonne.desmond@tudublin.ie](mailto:yvonne.desmond@tudublin.ie), [arrow.admin@tudublin.ie](mailto:arrow.admin@tudublin.ie), [brian.widdis@tudublin.ie](mailto:brian.widdis@tudublin.ie).



This work is licensed under a [Creative Commons Attribution-NonCommercial-Share Alike 3.0 License](#)



# Longer-Term Impact of High and Low Temperature on Mortality: An International Study to Clarify Length of Mortality Displacement

Ben Armstrong,<sup>1</sup> Michelle L. Bell,<sup>2</sup> Micheline de Sousa Zanotti Stagliorio Coelho,<sup>3</sup> Yue-Liang Leon Guo,<sup>4</sup> Yuming Guo,<sup>5</sup> Patrick Goodman,<sup>6</sup> Masahiro Hashizume,<sup>7</sup> Yasushi Honda,<sup>8</sup> Ho Kim,<sup>9</sup> Eric Lavigne,<sup>10</sup> Paola Michelozzi,<sup>11</sup> Paulo Hilario Nascimento Saldiva,<sup>3</sup> Joel Schwartz,<sup>12</sup> Matteo Scortichini,<sup>11</sup> Francesco Sera,<sup>1</sup> Aurelio Tobias,<sup>13</sup> Shilu Tong,<sup>14,15,16</sup> Chang-fu Wu,<sup>17</sup> Antonella Zanobetti,<sup>12</sup> Ariana Zeka,<sup>18</sup> and Antonio Gasparrini<sup>1</sup>

<sup>1</sup>Department of Social and Environmental Health Research, London School of Hygiene and Tropical Medicine, London, UK

<sup>2</sup>School of Forestry and Environmental Studies, Yale University, New Haven, Connecticut, USA

<sup>3</sup>Institute of Advanced Studies at the University of São Paulo, São Paulo, Brazil

<sup>4</sup>Department of Environmental and Occupational Medicine, National Taiwan University, Taipei, Taiwan

<sup>5</sup>Department of Epidemiology and Preventive Medicine, School of Public Health and Preventive Medicine, Monash University, Melbourne, Australia

<sup>6</sup>Environmental Health Sciences Institute, Dublin Institute of Technology, Dublin, Ireland

<sup>7</sup>Department of Pediatric Infectious Diseases, Institute of Tropical Medicine, Nagasaki University, Nagasaki, Japan

<sup>8</sup>Faculty of Health and Sport Sciences, University of Tsukuba, Tsukuba, Japan

<sup>9</sup>Graduate School of Public Health, Seoul National University, Seoul, Republic of Korea

<sup>10</sup>School of Epidemiology, Public Health and Preventive Medicine, University of Ottawa, Ottawa, Canada

<sup>11</sup>Department of Epidemiology, Lazio Regional Health Service, Rome, Italy

<sup>12</sup>Department of Environmental Health, Harvard T.H. Chan School of Public Health, Boston, Massachusetts, USA

<sup>13</sup>Institute of Environmental Assessment and Water Research (IDAEA), Spanish Council for Scientific Research (CSIC), Barcelona, Spain

<sup>14</sup>Shanghai Children's Medical Center, Shanghai Jiao Tong University, Shanghai, China

<sup>15</sup>School of Public Health, Anhui Medical University, Hefei, China

<sup>16</sup>School of Public Health and Social Work, Queensland University of Technology, Brisbane, Australia

<sup>17</sup>Department of Public Health, National Taiwan University, Taipei, Taiwan

<sup>18</sup>Institute of Environment, Health and Societies, Brunel University London, London, UK

**BACKGROUND:** In many places, daily mortality has been shown to increase after days with particularly high or low temperatures, but such daily time-series studies cannot identify whether such increases reflect substantial life shortening or short-term displacement of deaths (harvesting).

**OBJECTIVES:** To clarify this issue, we estimated the association between annual mortality and annual summaries of heat and cold in 278 locations from 12 countries.

**METHODS:** Indices of annual heat and cold were used as predictors in regressions of annual mortality in each location, allowing for trends over time and clustering of annual count anomalies by country and pooling estimates using meta-regression. We used two indices of annual heat and cold based on preliminary standard daily analyses: *a*) mean annual degrees above/below minimum mortality temperature (MMT), and *b*) estimated fractions of deaths attributed to heat and cold. The first index was simpler and matched previous related research; the second was added because it allowed the interpretation that coefficients equal to 0 and 1 are consistent with none (0) or all (1) of the deaths attributable in daily analyses being displaced by at least 1 y.

**RESULTS:** On average, regression coefficients of annual mortality on heat and cold mean degrees were 1.7% [95% confidence interval (CI): 0.3, 3.1] and 1.1% (95% CI: 0.6, 1.6) per degree, respectively, and daily attributable fractions were 0.8 (95% CI: 0.2, 1.3) and 1.1 (95% CI: 0.9, 1.4). The proximity of the latter coefficients to 1.0 provides evidence that most deaths found attributable to heat and cold in daily analyses were brought forward by at least 1 y. Estimates were broadly robust to alternative model assumptions.

**CONCLUSIONS:** These results provide strong evidence that most deaths associated in daily analyses with heat and cold are displaced by at least 1 y. <https://doi.org/10.1289/EHP1756>

## Introduction

In many locations worldwide, daily time-series analyses have identified adverse associations between daily mortality and temperatures that are toward the hot and cold ends of the temperature range for each location (Gasparrini et al. 2015; Guo et al. 2014). Many of these analyses employed distributed lag models (Armstrong 2006; Schwartz 2000) that discount mortality

displacement or harvesting (Zanobetti et al. 2000) within the lag interval, typically 2–3 wk in recent studies. However, they cannot identify the extent of displacement of mortality beyond this period. Such displacement may be quite short, for example, just a few months. The uncertainty about this makes it hard to estimate the actual life lost to weather and thereby judge the priority that should be given to public health policies to reduce those excesses.

One way to clarify the extent of mortality displacement due to the acute effects of heat and cold is to estimate associations between annual mortality and annual summaries of heat and cold. If such associations were null, it would indicate that excess deaths due to acute effects were wholly compensated by deficits later in the same year, as would be the case if all reflected mortality displacement. Positive associations of annual series would indicate that all or some of the excess deaths were displaced at least into the next period, suggesting that mortality was advanced by at least 1 y.

Two published single-city studies have used this method. In both London between 1947 and 2006 (Rehill et al. 2015) and Hong Kong from 1976 to 2012 (Goggins et al. 2015), years with cold winters and those with hot summers were associated with

---

Address correspondence to B. Armstrong, London School of Hygiene and Tropical Medicine, Keppel St., London WC1E 7HT, UK. Telephone: 0044 (0)20 79272232. Email: [ben.armstrong@lshtm.ac.uk](mailto:ben.armstrong@lshtm.ac.uk)

Supplemental Material is available online (<https://doi.org/10.1289/EHP1756>).

The authors declare they have no actual or potential competing financial interests.

Received 10 February 2017; Revised 25 September 2017; Accepted 26 September 2017; Published 27 October 2017.

**Note to readers with disabilities:** *EHP* strives to ensure that all journal content is accessible to all readers. However, some figures and Supplemental Material published in *EHP* articles may not conform to 508 standards due to the complexity of the information being presented. If you need assistance accessing journal content, please contact [ehponline@niehs.nih.gov](mailto:ehponline@niehs.nih.gov). Our staff will work with you to assess and meet your accessibility needs within 3 working days.

high mortality, though in temperate London, the association with heat was not significant. Those studies were not linked to daily studies, so it was not possible to directly estimate from them whether a proportion of heat and cold deaths found in daily studies were nevertheless displaced by less than 1 y.

In this multicountry study, we estimated the association between annual mortality and annual summaries of heat and cold in 278 locations from 12 countries. We also develop the method further to give insight, for positive associations, into whether the magnitude of association indicates partial or total absence of short-term displacement. This is easily the largest study to date addressing this question, indeed the only study including more than one location.

## Methods

The data were assembled from daily counts of deaths and mean temperatures from 278 locations from 12 countries of total durations of 10–40 y from years between 1972 and 2012. These data are those that have been previously described (Gasparrini et al. 2015), with the addition of six locations from Ireland (all the island of Ireland: two regions in Northern Ireland and four in the Republic). We also used a longer series from some countries, Japan in particular, and excluded locations with less than 10 y of qualifying data (see below). Descriptive data on included locations are summarized in Table 1 and given in more detail in Supplementary Material (Table S1).

Broadly, statistical methods follow those of the previous single-location annual studies (Goggins et al. 2015; Rehill et al. 2015). Mortality and temperature daily series were collapsed to an annual series using two different year dividers: *a*) starting years at the beginning of summer (the month before that including the summer solstice, May, in the northern hemisphere) to allow maximum time for shorter-term displacement of heat-related deaths to be discounted; *b*) similarly, starting years at the beginning of winter (November) for optimal cold analysis. Location years with more than 1% of days missing key variables were excluded.

In these annual series, (logged) annual mortality was regressed on annual indices of heat and cold. We used two indices described below; the first (“Basic Model”) is simpler and we hope easier to follow, and the second (“Modified Model”) more informative at the expense of some additional complexity.

### Basic Model

In a preliminary step, conventional daily analysis was used to identify minimum mortality temperature (MMT), the daily mean temperature at which mortality was predicted to be minimum, at each location. Specifically, we used exactly the same model specification as Gasparrini et al. (2015), a distributed lag nonlinear model (lags to 21 d) with spline control for seasonality and trend [8 degrees of freedom (df)/year] and day of week indicators.

Then, after collapsing daily to annual data as described above, in each country, location *i* and year *t*, mean daily deaths  $Y_{it}$  were regressed on mean of degrees above (below) these MMT<sub>*i*</sub>s in that year and location:

$$\log(Y_{it}) = \alpha_i + \beta_{\text{heat}} \text{heat\_degrees}_{i,t} + \beta_{\text{cold}} \text{cold\_degrees}_{i,t} + s_i(t, \text{df}_i) + \omega_t + \varepsilon_{it} \quad [1]$$

Where

- $\text{heat\_degrees}_{i,t} = \sum_{d=1,365} \{\max[(\text{temp}_{i,t,d} - \text{MMT}_i), 0]\} / 365$ , with  $\text{temp}_{i,t,d}$  being mean temperature on day *d*, year *t*, location *i*.

- $\text{cold\_degrees}_{i,t} = \sum_{d=1,365} \{\max[(\text{MMT}_i - \text{temp}_{i,t,d}), 0]\} / 365$ .
- $s_i(t, \text{df}_i)$  is a natural cubic spline of year *t* specific to location *i* with two df per decade (rounded).
- $\omega_t$  and  $\varepsilon_{it}$  are Gaussian independent and identically distributed noise at year and location–year levels, respectively.

In model (1), a Gaussian distribution was adopted in preference to the quasi-Poisson models used in daily analysis for modeling simplicity and because the large size of annual death counts made the Gaussian approximation very good (Goggins et al. 2015; Rehill et al. 2015). For presentation of results, we transform the coefficients  $\beta_{\text{heat}}$  and  $\beta_{\text{cold}}$  to percent excess relative risks (ERR%) per degree of annual high and low temperatures:  $\text{ERR}\% = 100[\exp(\beta) - 1]$ .

In these models, R code and data for one country are given in Supplemental Material, R code and data.

That model (1) is at country rather than location level is unusual, and indeed, we initially planned to fit a regression model of annual mortality model separately for each location, as did the previous single-location studies, and then combine results in a second-stage meta-analysis of location coefficients. However, exploratory analyses showed appreciable correlations of mortality and temperature anomalies across locations in the same country; years with anomalous mortality residuals in one location tended to be similarly anomalous in other locations also, even after allowing for temperature effects. This falsified the assumption of independence of estimates over locations necessary for conventional two-stage analysis with location-specific analyses at first level, leading to spurious precision in coefficients. We therefore reformulated the model for our analysis to have first-level regressions using all data from each country combined and a second-level meta-analysis of country (heat and cold) coefficients. The country-level regressions allowed separate intercepts and time spline curves for each location and an additional random effect of calendar year to allow for the shared year anomalies in mortality noted above.

### Modified Model to Relate Results to Those from Daily Analyses

Model (1) allows concluding whether some deaths were displaced by more than 1 y by heat or cold (if the coefficients of the annual heat\_degrees and cold\_degrees are positive), but does not easily provide evidence whether such longer-displaced deaths comprised all or just a fraction of the deaths found attributable to heat and cold in daily analyses. To provide this more quantitative evidence, we replaced the heat\_degrees and cold\_degrees variables in model (1) with annual fraction of deaths attributable to heat and cold,  $\text{heat\_AFdaily}_{i,t}$  and  $\text{cold\_AFdaily}_{i,t}$ , where AF stands for attributable fraction. These were estimated in the preliminary daily analyses by aggregating to annual level daily fractions of deaths attributable to heat and cold obtained as described in Gasparrini (2015), using the forward method described in Gasparrini and Leone (2014). The model was in other respects the same as model (1):

$$\log(Y_{it}) = \alpha_i + \beta_{\text{heat}} \text{heat\_AFdaily}_{i,t} + \beta_{\text{cold}} \text{cold\_AFdaily}_{i,t} + s_i(t, \text{df}_i) + \omega_t + \varepsilon_{it} \quad [2]$$

Under model (2), if in each year *t*, the excess fraction of deaths due to heat (cold) found in annual regression analyses are the same as the fraction found by aggregating the daily attributable deaths, then the coefficients  $\beta_{\text{heat}}$  and  $\beta_{\text{cold}}$  would, to a close approximation, be 1. The approximation is addressed with a complexity cost in a sensitivity analysis, but we motivate the argument with a simplified example: Suppose in one location in just

1 y, daily analyses indicated that 2% of deaths were due to heat (none to cold), so  $\text{heat\_AFdaily}_{i,t} = 0.02$ . Then, if all of those deaths were displaced by 1 y or more, mortality would be raised by a factor (rate ratio) of close to 1.02, and log mortality be 0.02 higher. To fit this, the coefficient  $\beta_{\text{heat}} = 1$ .

Thus, we can interpret the actual coefficients estimated from model (2) as follows: A coefficient of 0 is consistent with all deaths attributed to heat by daily analyses being displaced by less than 1 y. A coefficient of 1 is consistent with all the daily attributable deaths being displaced more than 1 y. Intermediate values are consistent with some but not all the daily attributable deaths being displaced by more than 1 y. Effects of heat and cold at longer lags than those considered in daily analyses may also play a part. If all the daily attributable deaths were displaced by more than 1 y, such additional longer lags would lead to coefficients  $> 1$ . If there was some short-term displacement, this might be compensated by longer lag effects, so, for example, a coefficient of 1 might reflect the two things balancing exactly. However, public health importance seems independent of whether a coefficient of 1, say, is due to absence of short-term displacement or its compensation by longer lag effects.

### Sensitivity Analyses

To identify sensitivity to specific features of the model (2) it was modified as follows:

1. Time spline changed from 2 to 1 and 3 df/decade.
2. The benchmark for excluding years due to missing values changed from 1% to 0% (excluded 9 locations entirely) and 10% (added 18 locations).
3. Influenza data were available only for locations in Canada, Ireland, Japan, Spain, and the United Kingdom (137 locations). For these countries, a term  $\lambda(\text{influenza}\%)_{it}$  was added, where  $\text{influenza}\%$  is the proportion of deaths coded as due to influenza (*International Classification of Diseases Eighth Revision (ICD-8) 470-474, Ninth Revision (ICD-9) code 487, and Tenth Revision (ICD-10) (WHO 1966, 1978, 2016)*). Unadjusted results restricted to the same five countries are also given for comparison.
4. Step changes in death rates at calendar-year changes (1 January) were included wherever significant at *a*)  $p < 0.01$ , and *b*)  $p < 0.001$ . These corresponded to false discovery rates of included steps of about 50% and 20%, respectively (estimated by Storey's *q*-value). Steps were selected first in calendar year analyses, modeled as indicators  $\text{step}(T)_{it} = 1$  if  $t > T$ , 0 otherwise. In the main models with years starting in May and November, the indicators were modified to  $\text{step}(T)_{it} = 1$  if  $t > T$ ,  $\text{step}(T)_{it} = 4/12$  (May) or  $10/12$  (November), 0 otherwise.

5. Three alternative approaches to clustering by year were undertaken: *a*) ignoring clustering by applying a conventional two-stage analysis with each location analyzed separately; *b*) using the country-level model as for the main model, but without random year effect with standard error of heat and cold index coefficients estimated by jackknife clustering on year; and *c*) the main model with addition of allowance for random variation in heat and cold coefficients (slopes) across locations.
6. To allow interpretation of coefficients with respect to proportion of deaths attributable to heat and cold in daily analyses without approximation, the explanatory variables in model (2) were modified to  $\text{heat\_index}_{i,t} = -\log(1 - \text{heat\_AFdaily}_{i,t})$ , and equivalently for cold. This we deduced from standard theory (Steenland and Armstrong 2006), by which for an explanatory variable value  $x$  for 1 y, the AF is:  $\text{AF}(x) = 1 - \exp(-\beta x)$ . Changing the subject of this expression, the value  $x = -\log[1 - \text{AF}(x)]$  gives the  $x$  variable that would give a coefficient of 1 if  $\text{AF}(x)$  were known. Thus, if  $\text{heat\_AFdaily}_{i,t}$  indeed were the same as the AF from annual analysis,  $\text{heat\_AFannual}_{i,t}$ , then the coefficient of  $x = -\log(1 - \text{heat\_AFdaily}_{i,t})$  would be 1. We did not anticipate replacing AF by  $-\log(1 - \text{AF})$  would make much difference to results, since at the low values for AF in these data (maximum 0.08 for heat, 0.2 for cold),  $\text{AF} \approx -\log(1 - \text{AF})$  to a good approximation.
7. An approximate correction was made for estimation uncertainty in the annual  $\text{AF}_{\text{daily}}$  used as explanatory variables in our main analysis. Because of the complexity of the structure of this error in variables (highly correlated across years within a location), we chose the SIMEX method (Carroll et al. 2006) in which additional error is simulated at various magnitudes and the pattern of mean ERRs and their standard errors estimated from (100) simulations at each magnitude extrapolated to estimate what would have been observed at zero error if the pattern persisted. Specifically, we took values of additional error variance multiplier  $\lambda = 0.5, 1, 1.5, \text{ and } 2$ , and used a quadratic polynomial to extrapolate the association between mean of estimated  $\beta$  values ( $\beta_\lambda$ ) with  $\lambda$  back to  $\lambda = -1$  to predict a value  $\beta_{\text{SIMEX}}$ . To obtain  $\text{SE}(\beta_{\text{SIMEX}})$ , we similarly extrapolated variance differences:  $\text{mean}[\text{Var}_j(\beta_{\lambda_j})] - \text{Var}(\beta_{\lambda_j})$  to  $\lambda = -1$ , where  $j$  is the simulation number.

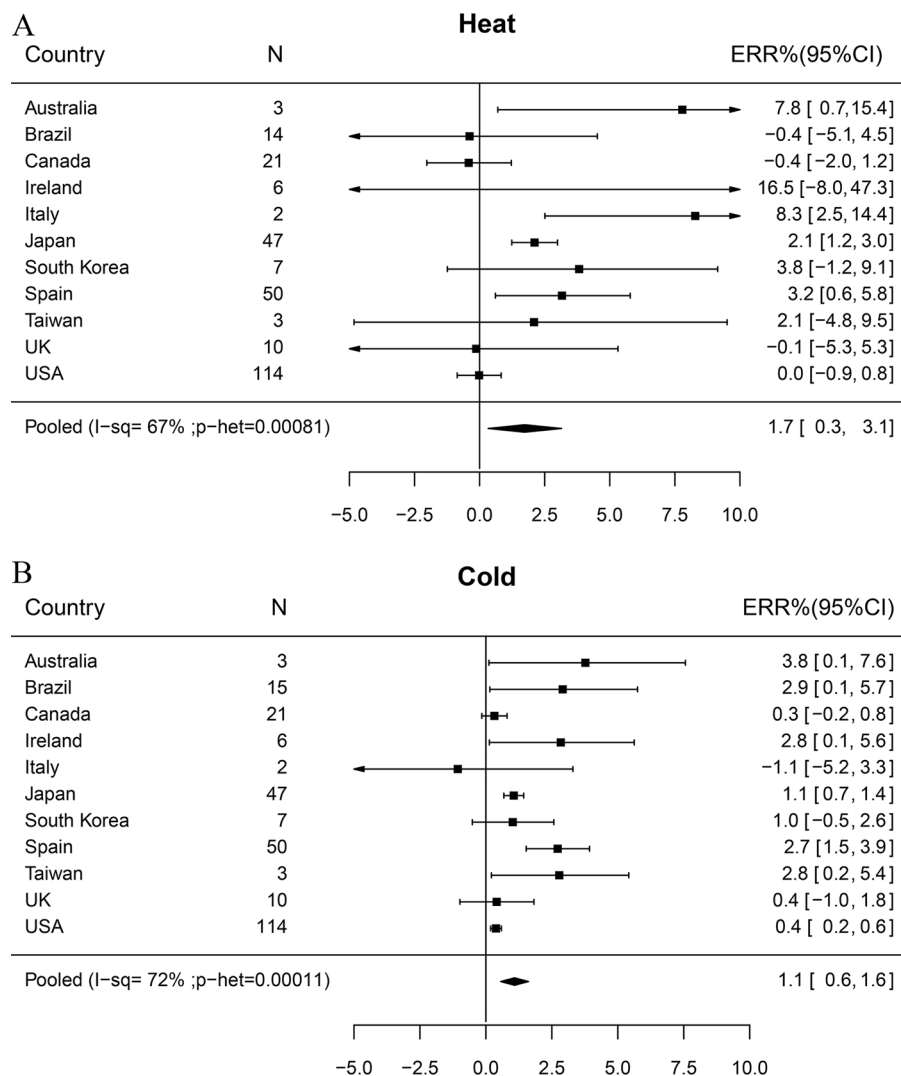
## Results

A summary of distributions of key variables in the 278 included locations is shown by country in Table 1, and the values of those

**Table 1.** Summary descriptive statistics by country.

Country	<i>n</i>	Period	MMT (percentile)	Mean (SD) AF%		Mean (SD) °C	
				Heat	Cold	Heat	Cold
Australia	3	1988–2008	22.8 (82%)	0.5 (0.2)	5.9 (0.5)	0.4 (0.1)	4.8 (0.3)
Brazil	15	1997–2010	25.1 (62%)	0.7 (0.3)	2.5 (0.5)	0.5 (0.1)	1.7 (0.2)
Canada	21	1986–2010	17.2 (82%)	0.5 (0.2)	5.1 (0.3)	0.5 (0.2)	11.1 (0.8)
Ireland	6	1984–2006	17.5 (97%)	0.0 (0.0)	11.3 (1.1)	0.0 (0.0)	7.8 (0.5)
Italy	2	1988–2009	21.8 (78%)	1.7 (1.4)	9.8 (0.9)	0.7 (0.3)	7.5 (0.5)
Japan	47	1972–2011	24.8 (84%)	0.4 (0.2)	10.5 (0.8)	0.4 (0.2)	10.1 (0.6)
South Korea	7	1992–2009	25.6 (90%)	0.3 (0.3)	6.6 (0.2)	0.2 (0.1)	12.0 (0.5)
Spain	50	1990–2009	21.4 (78%)	1.1 (0.5)	5.6 (0.7)	0.6 (0.2)	6.6 (0.5)
Taiwan	3	1994–2006	25.8 (55%)	0.9 (0.2)	3.8 (0.6)	1.1 (0.1)	2.9 (0.3)
United Kingdom	10	1993–2005	17.2 (90%)	0.3 (0.2)	8.4 (0.8)	0.2 (0.1)	6.9 (0.4)
United States	114	1985–2005	24.3 (83%)	0.3 (0.2)	5.4 (0.3)	0.4 (0.1)	9.8 (0.6)

Note: The table shows number *n* of locations, period of study (start years of first to last complete Nov–Oct year), and the mean over locations of MMT from daily analyses (in degrees and as percentile), mean, and SD over included years of annual attributable fraction of deaths estimated due to heat and cold using methods identical those for a previously published daily analysis (Gasparri 2015), and mean (SD) of annual mean degrees above and below the MMT. AF, attributable fraction; MMT, minimum mortality temperature; SD, standard deviation.



**Figure 1.** Association of annual mortality with mean annual degrees above and below minimum mortality temperature (MMT) by daily analysis (model 1): (A) Heat, (B) Cold. Percent excess relative risks ERR% are increments in RRs (%) per 1°C increase in annual mean degrees above/below MMT.

variables for each location are in Table S1. The United States, Japan, and Spain stand out as having the most locations, and Japan had easily the longest series (40 y). In some countries, the average location-specific variation over years of our two heat indices (fraction of deaths attributable to heat and degrees above MMT) is rather small, which limits study precision and power in those places. Ireland in particular, with mean MMT at the 97th percentile of temperature, showed an average heat-attributable fraction of just 0.03%, with standard deviation of 0.05%.

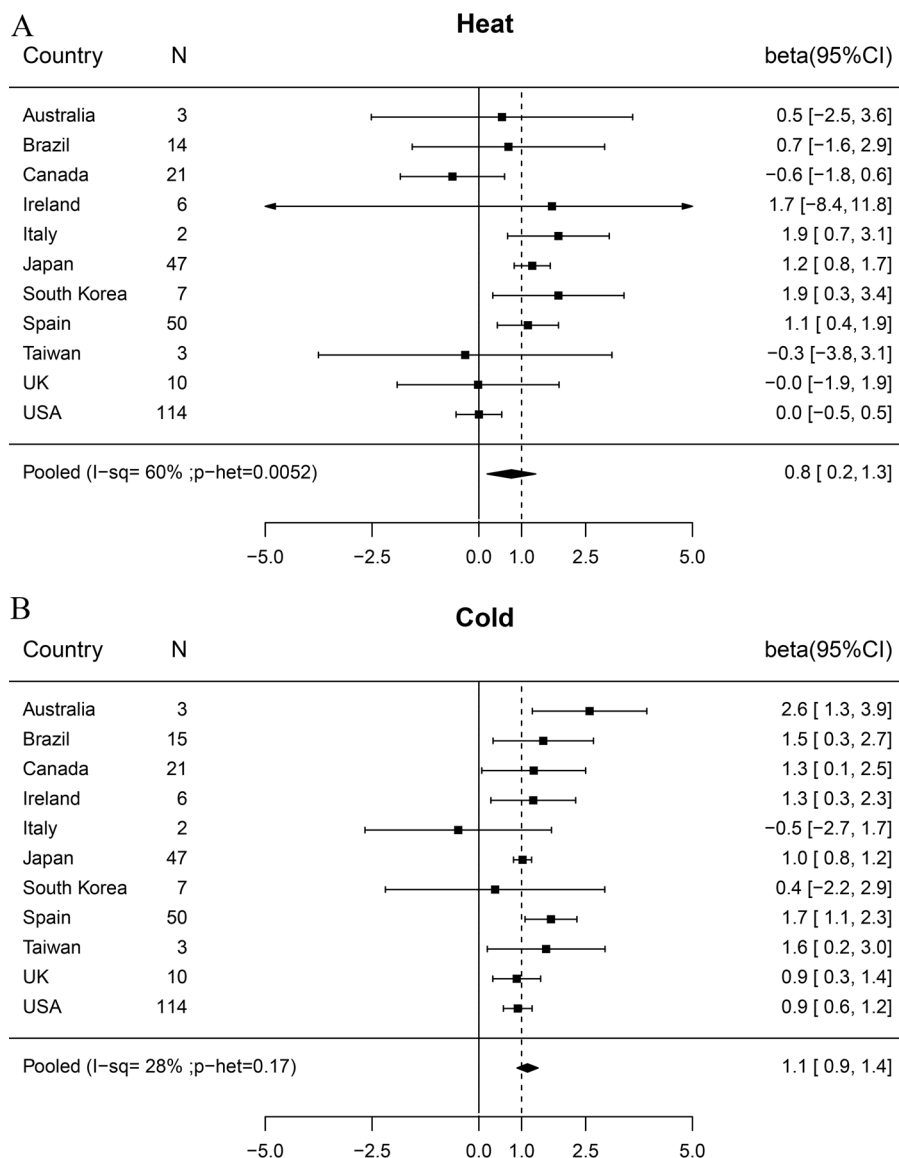
The association of mortality with mean annual degrees of heat and cold was positive on average and in most countries (Figure 1), with overall estimates of ERR per degree of heat above MMT 1.7% [(95% confidence interval (CI): 0.3, 3.1] and of cold below MMT 1.1% (95% CI: 0.6, 1.6), though variation between countries in ERRs was appreciable ( $I^2 = 67\%$  and  $72\%$ ). This indicates that some deaths associated with heat and cold were indeed brought forward by at least 1 y.

An ERR% of 1.0% has no special significance in the results in Figure 1 [model (1)], which cannot elucidate what proportion the excesses found comprise of all deaths found attributable to heat and cold in daily analyses. The results in Figure 2 from model (2) do this; if all the deaths found attributable to heat and cold in daily analyses were displaced by at least 1 y, then the regression

coefficient  $\beta$  would be 1. For both heat and cold, our pooled annual analysis coefficients were indeed close to 1, at 0.8 (95% CI: 0.2, 1.3) and 1.1 (95% CI: 0.9, 1.4), respectively. This indicates that about the same numbers of deaths were found associated with these weather conditions in annual as in daily analyses, evidence that most of the latter were brought forward (displaced) by at least 1 y (not just harvested).

For cold, the country-specific associations in Figure 2 varied no more than expected by chance. There was, however, appreciable heterogeneity of heat coefficients across countries ( $I\text{-sq} = 60\%$ ), despite these being less precise than for cold. Most of the results that were not clearly positive were very imprecise, but for the United States and Canada, the incremental risks, 0 (95% CI:  $-0.5, 0.5$ ) and  $-0.6$  (95% CI:  $-1.8, 0.6$ ), had CIs excluding 1.0, thus providing some evidence that in these countries, some deaths shown in daily analyses to be associated with heat were displaced by less than 1 y.

Few of the alternative models explored in sensitivity analyses changed the overall estimates appreciably (Figures 3 and 4). Models ignoring the year clustering across locations within countries (“Alt. app. to year clustering” first row) had much narrower confidence intervals for country-specific coefficients, which is reflected in the high heterogeneity  $I\text{-sq}$  values. Conversely, those



**Figure 2.** Association of annual mortality with mean annual deaths attributed to heat and cold by daily analysis (model 2). (A) Heat. (B) Cold. Betas are regression coefficients for log(mortality) on fraction of deaths attributable to heat and cold in daily analyses; a value of 1.0 indicates exactly the deaths expected from daily analyses if all such deaths were displaced beyond the year end.

using a jackknife to allow for clustering (second row) had wider country-level intervals leading to low I-sq values. Allowing for error in the  $AF_{\text{daily}}$  values by SIMEX (“Correction for AF est. error”) moved estimates away from the null and slightly widened CIs. Here, overall estimates increased by multiples of 1.24 and 1.13 for heat and cold, respectively, and patterns by country remained the same (Figure S1). Investigation of sensitivity to the choice of month marking the start of years for annual aggregation (May and November in main analyses) showed little such variation for cold and somewhat more for heat, with November and February start months showing higher estimates, though all CIs overlapped considerably (Figure S2; not on Figures 3 and 4).

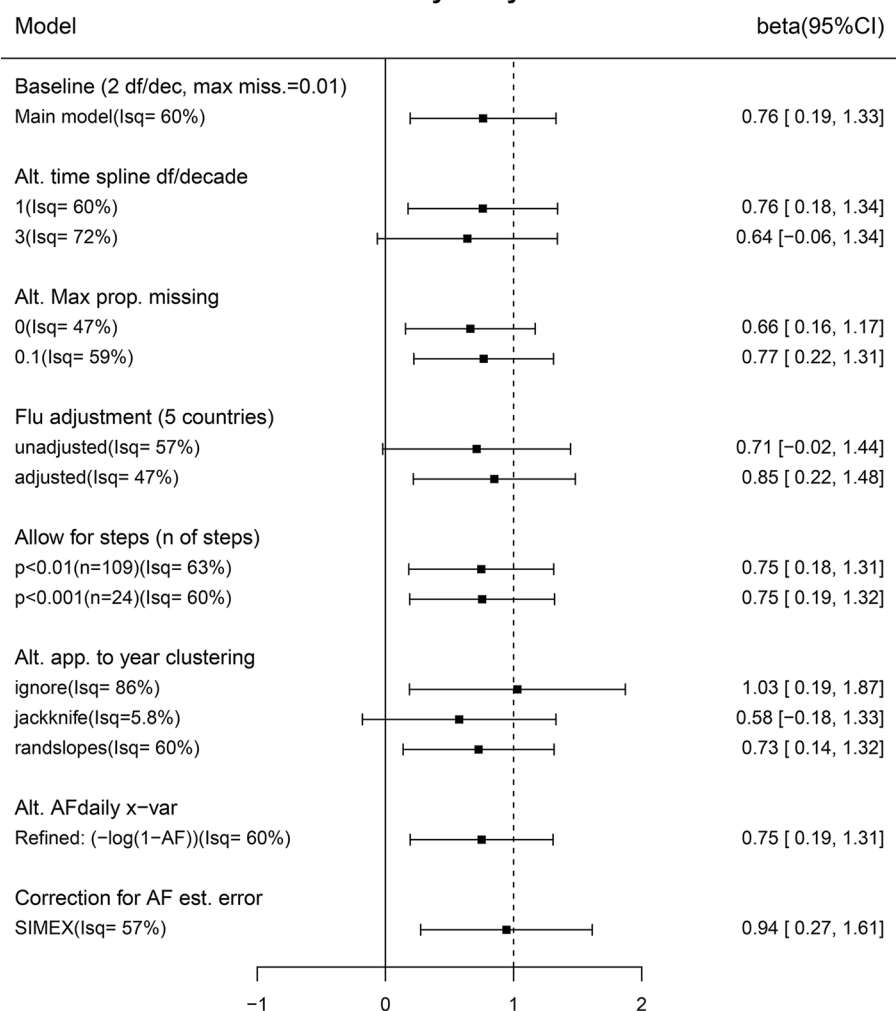
## Discussion

This study found strong evidence that, on average, over all country studies, annual mortality was associated with deviations of temperatures from normal, in particular rising in years that

experienced long or severe high or low temperatures. The strength of the association was consistent with all of the deaths found associated acutely with cold in daily analyses being brought forward by at least 1 y. These deaths thus represent significant life shortening rather than short-term mortality displacement. The associations with heat in the United States and Canada were exceptions, however. These suggested that in those countries, many of the deaths attributable in daily analyses to heat (though not cold) were advanced by less than 1 y.

Our overall results are broadly in line with the two previously published studies using a broadly similar approach, each with data from a single location but much longer periods (37 and 57 y) (Goggins et al. 2015; Rehill et al. 2015). Direct quantitative comparison is difficult. Many other studies have considered the mortality-displacement issue for heat-related deaths using distributed lag models with daily data, some finding evidence of significant proportions of heat-related deaths being displaced by only a few weeks (Basu and Malig 2011; Hajat et al. 2005; Kysely 2004), but others found no such evidence

### Sensitivity analyses: Heat



**Figure 3.** Sensitivity of overall heat–mortality association (baseline model 2) to changing model features. Alt. time spline: Degrees of freedom (df)/decade changed from 2 df/decade (baseline) to 1 or 3 df/decade. Alt. max. prop. missing: criterion for excluding years with missing values changed from 1% (baseline) to 0% (9 locations excluded) or 10% (18 locations added.) Flu adjustment: adjusted for the proportion of deaths with influenza as the cause of death; data available only for locations in Canada, Ireland, Japan, Spain, and the United Kingdom (137 locations); unadjusted estimate restricted to the same countries for comparison. Allow for steps: Steps (breaks) were allowed for by including any single-step indicator variables significant at each of the two stated levels, which were estimated to result in false discovery rates of 0.5 ( $p < 0.01$ ; 109 steps) and 0.2 ( $p < 0.001$ ; 24 steps). Alt. app. to year clustering: The estimate ignoring clustering (“ignore”) was a conventional analysis with each location analyzed separately; the jackknife estimate was from the country-level model without random year effect, but standard error estimated by jackknife clustering on year; the “randslopes” estimate (baseline model) allowed for random variation in coefficients for heat and cold across locations. Alt. AFdaily x-var: Explanatory variables modified to  $\text{heat\_index}_{i,t} = -\log(1 - \text{heat\_AFdaily}_{i,t})$  and  $\text{cold\_index}_{i,t} = -\log(1 - \text{cold\_AFdaily}_{i,t})$ , respectively, to allow interpretation of coefficients with respect to proportion of deaths attributable to heat and cold in daily analyses without approximation. Correction for AF estimation error: SIMEX correction made for error in  $\text{AFdaily}_{i,t}$  values.

(Kysely and Kim 2009; Le Tertre et al. 2006). In recent years, many studies have considered distributed lag models with maximum lag of several weeks (Gasparrini et al. 2015), so that temperature-related excesses of deaths with very short-term displacement will be matched by deficits later on in the total lag interval, so the overall cumulative risk for that interval will not include the deaths displaced within it. However, it is difficult for such studies to exclude displacement, which, though short, is more than a month or two.

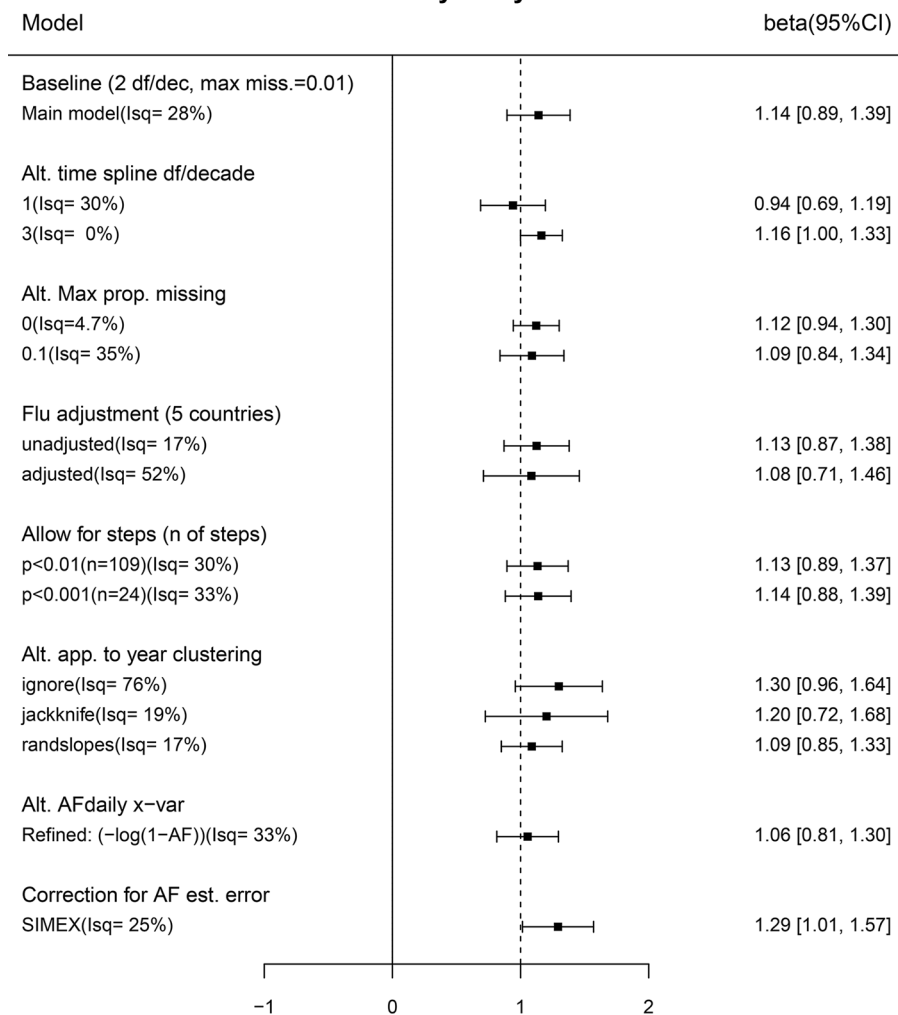
Some studies have considered patterns of deaths after heat waves to elucidate displacement. From considering mortality for the 50 d following the 1995 Chicago heat wave, it was estimated that 26% of excess deaths during the heat wave were displaced by less than 50 d (Kaiser et al. 2007). From the experience in the year following the 2003 heat wave in Paris, it was concluded that deficits of mortality in next year could explain no more than 5,000 of the 15,000 excess due to heat in

2003 (Toulemon and Barbieri 2008). It would be interesting to explore whether duration of displacement differed for such extreme temperatures and the more moderate heat and cold dominating the temperature-related excesses found by Gasparrini (Gasparrini et al. 2015).

The patterns of reduced vulnerability to heat following winters of high mortality found in several studies (Ha et al. 2011; Qiao et al. 2015; Rocklöv et al. 2009; Stafoggia et al. 2009) provide some indirect evidence that some cold-related deaths are among those who would otherwise be vulnerable to heat, so they would likely have died within the next several months if they had survived the cold. However, it seems impossible from these studies to quantify the proportion of cold-related deaths that this would affect. Our results indicated that it is small.

The robustness of our results to quite extensive sensitivity analyses adds credibility to our conclusions. A further strength of this study is the wide geographic coverage and large number of

## Sensitivity analyses: Cold



**Figure 4.** Sensitivity of overall cold–mortality association (baseline model 2) to changing model features. Alt. time spline: Degrees of freedom (df)/decade changed from 2 df/decade (baseline) to 1 or 3 df/decade. Alt. max. prop. missing: criterion for excluding years with missing values changed from 1% (baseline) to 0% (9 locations excluded) or 10% (18 locations added.) Flu adjustment: adjusted for the proportion of deaths with influenza as the cause of death; data available only for locations in Canada, Ireland, Japan, Spain, and the United Kingdom (137 locations); unadjusted estimate restricted to the same countries for comparison. Allow for steps: Steps (breaks) were allowed for by including any single-step indicator variables significant at each of the two stated levels, which were estimated to result in false discovery rates of 0.5 ( $p < 0.01$ ; 109 steps) and 0.2 ( $p < 0.001$ ; 24 steps). Alt. app. to year clustering: The estimate ignoring clustering (“ignore”) was a conventional analysis with each location analyzed separately; the jackknife estimate was from the country-level model without random year effect, but standard error estimated by jackknife clustering on year; the “randslopes” estimate (baseline model) allowed for random variation in coefficients for heat and cold across locations. Alt. AFdaily x-var: Explanatory variables modified to  $\text{heat\_index}_{i,t} = -\log(1 - \text{heat\_AFdaily}_{i,t})$  and  $\text{cold\_index}_{i,t} = -\log(1 - \text{cold\_AFdaily}_{i,t})$ , respectively, to allow interpretation of coefficients with respect to proportion of deaths attributable to heat and cold in daily analyses without approximation. Correction for AF estimation error: SIMEX correction made for error in  $\text{AFdaily}_{i,t}$  values.

locations. However, the gain in precision we hoped to achieve by multiple replication was somewhat reduced by the correlation of annual anomalies of mortality (year clustering) across cities in the same country. This meant that most country-specific results lack the precision for detailed comparison. A notable exception is Japan, where precise estimates illustrate the value of long (40 y) series for analyses of annual data.

There were some other limitations. Because we did not have annual population data for many locations, we could not allow for population changes, as did Goggins et al. (2015), relying rather on the spline curve to allow for this and other gradual temporal changes. We also did not consistently have cause- or age-specific death counts, precluding an investigation of these potential modifiers of the associations. Although our geographic coverage was wide, it is not globally representative, in particular overwhelmingly being comprised of more developed countries.

## Conclusion

This study provides new evidence that over a wide range of locations, for the deaths associated acutely with extremes of heat and cold, most lives were shortened by at least 1 y. Adverse health effects of high and low temperatures are thus confirmed as significant public health concerns and not merely short-term displacement of times of death. Future research could usefully use similar methods, preferably with longer series, to clarify how much longer than 1 y temperature-attributable deaths are displaced, and whether extent of displacement varies by factors such as age, poverty, and preexisting conditions, and how extreme were the heat and cold.

## Acknowledgments

B.A. was supported for this work by the U.K. National Institute for Health Research Health Protection Research Unit in



Environmental Change and Health; A.G. and F.S. were supported by a grant from the U.K. Medical Research Council (grant ID:MR/M022625/1); M.L.B. was supported by Assistance Agreement No. 83587101 awarded by the U.S. Environmental Protection Agency. Y.G. was supported by the Career Development Fellowship of Australian National Health and Medical Research Council (APP1107107). A.T. was supported by Ministry of Education (Spain) grant PRX17/00705. H.K. was supported by the Global Research Lab (#K21004000001-10A0500-00710) through the National Research Foundation of Korea. Y.L.G. is supported by NHRI-105-EMSP09 from National Health Research Institutes, Taiwan. Y.H. and M.H. were supported by the Environment Research and Technology Development Fund (S-14) of the Environmental Restoration and Conservation Agency.

## References

- Armstrong B. 2006. Models for the relationship between ambient temperature and daily mortality. *Epidemiology* 17(6):624–631, PMID: 17028505, <https://doi.org/10.1097/01.ede.0000239732.50999.8f>.
- Basu R, Malig B. 2011. High ambient temperature and mortality in California: Exploring the roles of age, disease, and mortality displacement. *Environ Res* 111(8):1286–1292, PMID: 21981982, <https://doi.org/10.1016/j.envres.2011.09.006>.
- Carroll RJ, Ruppert D, Stefanski LA, Crainiceanu CM. 2006. *Measurement Error in Nonlinear Models: A Modern Perspective*. 2nd edition. Boca Raton, FL: Chapman & Hall/CRC.
- Gasparri A, Guo Y, Hashizume M, Lavigne E, Zanobetti A, Schwartz J, et al. 2015. Mortality risk attributable to high and low ambient temperature: a multicountry observational study. *Lancet* 386(9991):369–375, PMID: 26003380, [https://doi.org/10.1016/S0140-6736\(14\)62114-0](https://doi.org/10.1016/S0140-6736(14)62114-0).
- Gasparri A, Leone M. 2014. Attributable risk from distributed lag models. *BMC Med Res Methodol* 14:55, PMID: 24758509, <https://doi.org/10.1186/1471-2288-14-55>.
- Goggins WB, Yang C, Hokama T, Law LS, Chan EY. 2015. Using annual data to estimate the public health impact of extreme temperatures. *Am J Epidemiol* 182(1):80–87, PMID: 26009315, <https://doi.org/10.1093/aje/kwv013>.
- Guo Y, Gasparri A, Armstrong B, Li S, Tawatsupa B, Tobias A, et al. 2014. Global variation in the effects of ambient temperature on mortality: a systematic evaluation. *Epidemiology* 25(6):781–789, PMID: 25166878, <https://doi.org/10.1097/EDE.000000000000165>.
- Ha J, Kim H, Hajat S. 2011. Effect of previous-winter mortality on the association between summer temperature and mortality in South Korea. *Environ Health Perspect* 119(4):542–546, PMID: 21233056, <https://doi.org/10.1289/ehp.1002080>.
- Hajat S, Armstrong BG, Gouveia N, Wilkinson P. 2005. Mortality displacement of heat-related deaths: a comparison of Delhi, São Paulo, and London. *Epidemiology* 16(5):613–620, PMID: 16135936, <https://doi.org/10.1097/01.ede.0000164559.41092.2a>.
- Kaiser R, Le Tertre A, Schwartz J, Gotway CA, Daley WR, Rubin CH. 2007. The effect of the 1995 heat wave in Chicago on all-cause and cause-specific mortality. *Am J Public Health* 97(suppl 1):S158–S162, PMID: 17413056, <https://doi.org/10.2105/AJPH.2006.100081>.
- Kysely J, Kim J. 2009. Mortality during heat waves in South Korea, 1991 to 2005: How exceptional was the 1994 heat wave?. *Clim Res* 38:105–116, <https://doi.org/10.3354/cr/00775>.
- Kyselý J. 2004. Mortality and displaced mortality during heat waves in the Czech Republic. *Int J Biometeorol* 49(2):91–97, PMID: 15549422, <https://doi.org/10.1007/s00484-004-0218-2>.
- Le Tertre A, Lefranc A, Eilstein D, Declercq C, Medina S, Blanchard, et al. 2006. Impact of the 2003 heatwave on all-cause mortality in 9 French cities. *Epidemiology* 17(1):75–79, PMID: 16357598, <https://doi.org/10.1097/01.ede.0000187650.36636.1f>.
- Qiao Z, Guo Y, Yu W, Tong S. 2015. Assessment of short-and long-term mortality displacement in heat-related deaths in Brisbane, Australia, 1996–2004. *Environ Health Perspect* 123(8):766–772, PMID: 25794410, <https://doi.org/10.1289/ehp.1307606>.
- Rehill N, Armstrong B, Wilkinson P. 2015. Clarifying life lost due to cold and heat: a new approach using annual time series. *BMJ Open* 5(4):e005640, PMID: 25877269, <https://doi.org/10.1136/bmjopen-2014-005640>.
- Rocklöv J, Forsberg B, Meister K. 2009. Winter mortality modifies the heat-mortality association the following summer. *Eur Respir J* 33(2):245–251, PMID: 18799511, <https://doi.org/10.1183/09031936.00037808>.
- Schwartz J. 2000. The distributed lag between air pollution and daily deaths. *Epidemiology* 11(3):320–326, PMID: 10784251, <https://doi.org/10.1097/00001648-200005000-00016>.
- Stafoggia M, Forastiere F, Michelozzi P, Perucci CA. 2009. Summer temperature-related mortality: effect modification by previous winter mortality. *Epidemiology* 20(4):575–583, PMID: 19295435, <https://doi.org/10.1097/EDE.0b013e31819ecdff0>.
- Steenland K, Armstrong B. 2006. An overview of methods for calculating the burden of disease due to specific risk factors. *Epidemiology* 17(5):512–519, PMID: 16804473, <https://doi.org/10.1097/01.ede.0000229155.05644.43>.
- Toulemon L, Barbieri M. 2008. The mortality impact of the August 2003 heat wave in France: investigating the “harvesting” effect and other long-term consequences. *Popul Stud (Camb)* 62(1):39–53, PMID: 18278672, <https://doi.org/10.1080/00324720701804249>.
- WHO (World Health Organization). 1966. *International Classification of Diseases, Eighth Revision (ICD-8)* 470–474, <http://apps.who.int/iris/handle/10665/89197> [accessed 1 October 2016].
- WHO. 1978. *International Classification of Diseases, Ninth Revision (ICD-9)* code 487, <http://apps.who.int/iris/handle/10665/39473> [accessed 1 October 2016].
- WHO. 2016. *International Statistical Classification of Diseases and Related Health Problems 10th Revision (ICD-10)* WHO version for 2016. Chapter X; codes J9–J11, <http://apps.who.int/classifications/icd10/browse/2016/en#X> [accessed 1 October 2016].
- Zanobetti A, Wand M, Schwartz J, Ryan LM. 2000. Generalized additive distributed lag models: quantifying mortality displacement. *Biostatistics* 1(3):279–292, PMID: 12933509, <https://doi.org/10.1093/biostatistics/1.3.279>.