


4-1-1985

## Irish H & V News

Follow this and additional works at: <https://arrow.tudublin.ie/bsn>

 Part of the [Civil Engineering Commons](#), [Construction Engineering Commons](#), and the [Construction Engineering and Management Commons](#)

### Recommended Citation

(1985) "Irish H & V News," *Building Services News*: Vol. 24: Iss. 4, Article 1.

doi:10.21427/D76M6

Available at: <https://arrow.tudublin.ie/bsn/vol24/iss4/1>

This Article is brought to you for free and open access by the Journals at ARROW@TU Dublin. It has been accepted for inclusion in Building Services News by an authorized administrator of ARROW@TU Dublin. For more information, please contact [yvonne.desmond@tudublin.ie](mailto:yvonne.desmond@tudublin.ie), [arrow.admin@tudublin.ie](mailto:arrow.admin@tudublin.ie), [brian.widdis@tudublin.ie](mailto:brian.widdis@tudublin.ie).



This work is licensed under a [Creative Commons Attribution-Noncommercial-Share Alike 3.0 License](#)

## Combex Appointment

As and from 1 February last Atmostech Ltd of London and Combex Engineering Ltd signed an agreement for Combex to act as sole agents and distributors for the range of Bradlee 3-pass steam and hot-water shell boilers.

Bradlee boilers prove highly-competitive and considerable sales have been achieved in the last 12 months. For further information contact Combex Engineering at Dublin: 748371/2.

## Refrigeration Dance

The 3rd annual refrigeration trade dinner dance — sponsored by Fridge Spares (W/sale) Ltd; RSL (Ireland) Ltd; J Sampson & Son Ltd; and HRP Walker — is scheduled to take place once again at the Green Isle Hotel on 19 April next.

Tickets have been kept to a nominal £10 per person and will include the main meal in addition to helping cover costs for the guest artists who will provide the evening's entertainment. There is a bar extension to 1.30am and spot prizes will be presented throughout the proceedings.

Tickets are available from any of the above-named sponsors.

## Solid-Fuel Heating

"Durability of Domestic Solid-Fuelled Heating Appliances" — New Standard.

The IIRS are preparing a draft Standard on the above topic and are considering setting two levels for the design life of these appliances — say 10 years and 25 years — in order to accommodate various types of construction and different markets.

Comments and suggestions, together with any information which could be useful in determining the appropriate materials and thicknesses, are invited.

# CIBS/ASHRAE 1986 Dublin Conference

The CIBS have recently announced that the second CIBS/ASHRAE joint conference will take place at Trinity College Dublin between the 14 and 17 September 1986. Papers are being invited from the USA, Ireland and England and, while a number of authors of papers have been identified, anyone with interesting ideas that they would like considered by the committee should contact Seamus Homan who has been nominated as the Technical Officer for the Irish Sub-Committee.

It is intended that the paper will provide a source of technical information for working engineers and promote current ideas and recent experiences from both sides of the Atlantic related to the engineered environment.

The main topics will be —

- Building design construction

and management, including: thermal storage; building envelopes and fenestration energy management; human comfort and outdoor air quantity;

- Equipment advances including: automatic coal firing; fluidised bed boilers; evaporative cooling; gas-fired and earth-coupled heat pumps; solar panels and refrigeration plants.

- Case studies including: clean rooms; ice rinks; low-energy offices and leisure centres.

CIBS Ireland have been successful in securing what is in fact the second historic opportunity for the exchange of technical information and experiences of energy use in buildings under the umbrella of two internationally respected organisations, dedicated to the dissemination and advancement of technological progress

in our field.

It is no mere coincidence that this conference will be held in Ireland during the Presidency of the CIBS by Eoin Kenny. It will be a true Irish year for a very international event and, as such, Ireland is indeed honoured to be allowed to act as host to a conference which will attract over 300 delegates.

With such an audience on our own doorstep, it's imperative that we as an industry respond to both the challenge and opportunity this unique gathering will provide. To this end the Irish Sub-Committee will shortly be canvassing for support — both directly and indirectly — so that we can present ourselves to the rest of the world as a technically competent country.

Don't be shy about responding, both financially and otherwise.



\* Eddie Collins, TD, Minister of State at the Department of Industry, Trade, Commerce and Tourism, and also at the Department of Energy, who will officially open the '85 on 16 April at the RDS Industries Hall.

## IhVex '85 — Building Services Bonanza

With the recession finally bottomed out the building services sector of the construction industry faces a challenging but nonetheless opportunistic period over the next 12 months.

The coming on stream of natural gas, coupled with a number of other encouraging factors, has created an optimistic outlook which is very much reflected in the cross section of firms represented at the forthcoming IhVex '85 exhibition at the Industries Hall in the RDS.

The Show — which is totally booked out — has all the major influences in the services sector participating, most of whose exhibits display a marked emphasis on energy conscious controls and devices. Never before has there been such a need for appliances incorporating features of this type and it's good to see the industry responding so well to the challenge.

If your business is the mechanical and services sector of Ireland's building industry — either as an engineer, specifier, consultant, contractor, energy manager or product supplier — then be sure to avail of this opportunity to see all that's available in the unique setting afforded by IhVex '85.

# Save them spending pounds where they should be spending pennies

Implementation of the new water bye-laws concerning urinals that are flushed automatically can reduce water wastage dramatically. And, where the supply is metered, installing the correct control valve saves a fortune on water bills too.

The bye-laws refer both to the frequency of flushing and to periods within which no flushing should occur.

So it's good to know that there's one outstandingly effective method of dealing with their requirements: Cistermiser, the only flush-control device awarded the certificate of the British Board of Agrément.

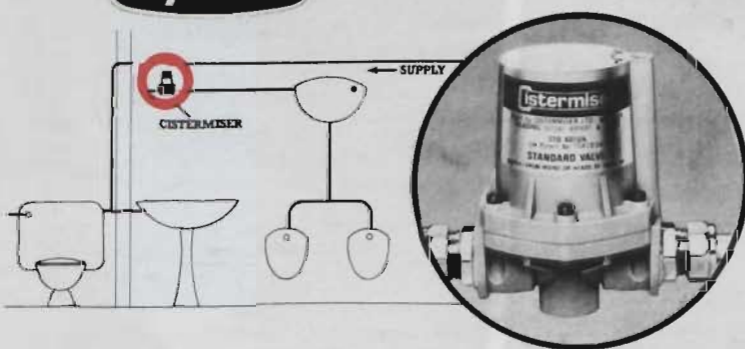
Cistermiser control valves do not merely conform to the stipulations laid down by the bye-laws. They exceed them. For, even within the defined limits, *they operate only in direct proportion to the actual usage of the facilities.* Money won't, literally, be pouring down the drain when the building is empty or being used by just a few people.

The result is correspondingly greater savings in the cost of metered water supplies. In fact, a single Cistermiser can save up to 100,000 gallons annually, so paying for itself over and over again. Which explains why one famous hotel group is reckoning on a startling £145,000 reduction per year in its metered water charges.

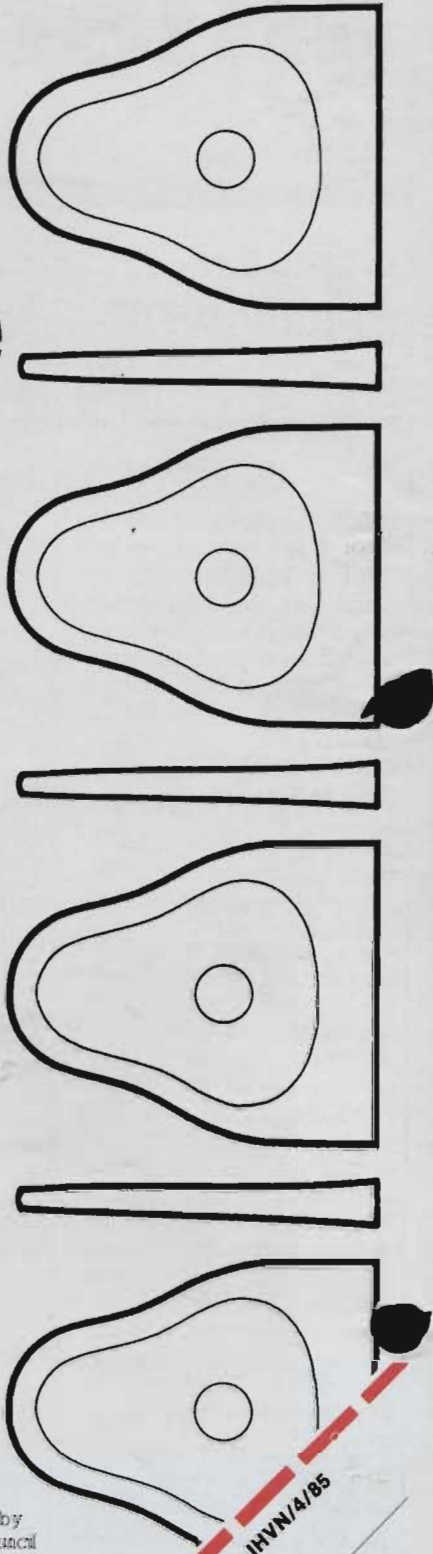
Cistermiser. The least costly yet most rewarding way of putting an end to that wasteful financial outflow.

**Sanbra  
Fyffe**  
Sanbra Fyffe,  
Santry Ave., Dublin 9.  
Telephone: 379291.  
Telex: 25325.

Conex Sanbra Ltd., Glenville  
Industrial Estate, Belfast.  
BT37 0TU. Tel: Whiteabbey 67317.



*Cistermiser is:*  
non-electric, so a plumber  
can install it in minutes.  
Maintenance free. Approved by  
the former National Water Council  
and now recommended by Water Authorities.  
The only flush-control device awarded  
the certificate of the British  
Board of Agrément.  
Approved by the Dublin Corporation.



# Cistermiser

Efficient flushing at a fraction of the cost

IHVN/4/85

Please send latest colour brochure on Cistermisers to:

NAME \_\_\_\_\_  
 POSITION \_\_\_\_\_  
 COMPANY \_\_\_\_\_  
 ADDRESS \_\_\_\_\_  
 TEL \_\_\_\_\_

# IN THIS ISSUE

## NEWSDESK:

Combex Appointment; Refrigeration Dance; Solid Fuel Heating — New Standard; CIBS/ASHRAE Conference for Dublin; Nuclear Contract for Kilkenny; Octabuild Exhibition; Building Services Made Easy; Energy Manager Handbook; Major Toussaint Nyssen Launch; Reconair — Latest Addition to Group; BTU Golf — First Outing Report; Monodraught Launch; Bedford Versatility; Solex Buys Landi-Hartog; CIBS AGM; Grundfos Open New Office. **Pages 2-5**

## PRODUCT REVIEW:

Sanitary Ware — An examination of the design criteria behind this sector. **Page 7**

## GUEST WRITER:

John Lynch — Chief Executive Irish Productivity Centre/formerly Director of Business Policy CII/First Smurfit Professor of Business Law at UCG — explains the benefits and drawbacks surrounding the sharing of company profits as outlined in the Finance Acts of 1982 and 1984. **Page 13**

## ANOTHER SIDE OF...

A little confusing this month: we talk to Hugh Maguire, not about another side but about the same side! Just read it. **Page 15**

## FACE TO FACE:

This month our investigator talked to Don Lauhoff, Managing Director, Euro Pumps Ltd, in a piece entitled "Pumping The Market Place". **Page 16**



• Chimneys ..... **Page 21**

## ULSTER NEWS:

Bostobell Appoint Allenwood; Selkirk Win £½ Million Contract; Changes at McDonald; Woodwarm and Interoven. **Page 17**

## NEW PRODUCTS:

Vaillant Accessory Kit; Oil Timer; Fast-Fit Ventilator; Formalux; Hand Tools; Shower Enclosures; New from Danfoss; Coaster Heating; Mobile Air Conditioner; Control of Radiant Systems; Water Treatment Chemicals; Euroflow Fans; Energy Efficient Controls. **Page 19**

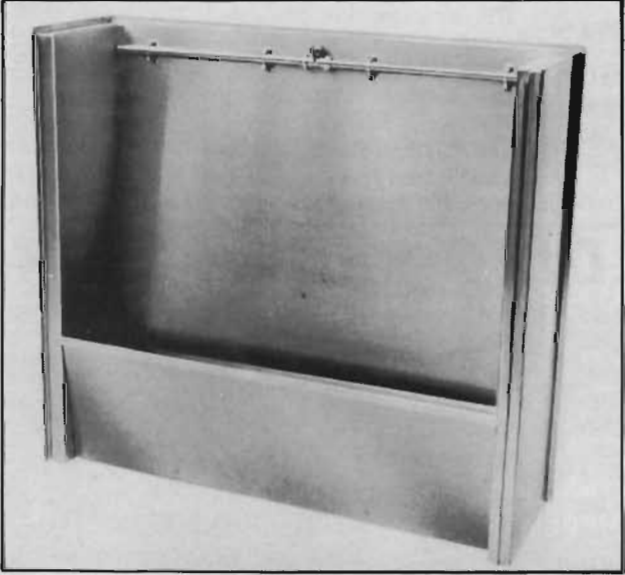
## PRODUCT REVIEW —

### CHIMNEYS:

Chimney Failure — Yes, There is a Problem with Installors **Page 21**

### PLUMBLINES:

Having been away from the office for a few weeks "Plumblines" is rested this month. . . but don't despair, it'll return with some zest in time for the May issue.



• **Stainless Steel Slab Urinal from Manning & Usher.**

• **Product Review — Sanitaryware ..... Page 7**

# IRISH H&V NEWS

IRELAND'S BUILDING SERVICES MAGAZINE

Published by: Irish Trade & Technical Publications Ltd, 5/7 Main Street, Blackrock, Co Dublin, Tel: 885001 Telex: 92258.

Managing Director: Gerard J Murphy  
Editor: Patrick Lehane  
Art Editor: John Gibney  
Sales and Marketing Director: Patrick J Codyre  
Advertisement Manager: Joe Warren

Published by ARROW@TU Dublin, 1985

Northern Advertisement Representative: Carol Redfern  
12 Mount Charles, Belfast BT7 1N2. Tel: Belfast 247427  
Subscription: One year £20.  
Printed by: Mercury Print Ltd, 5/7 Main St, Blackrock, Co Dublin.

© All editorial contents and all advertisements prepared by the publishers, Irish Trade & Technical Publications Ltd, 1985.

Irish Heating & Ventilating News circulates to key executives in the heating, ventilating, air conditioning, refrigeration, sanitaryware, plumbing and environmental control industries. Its circulation also includes energy managers, architects, designers, sanitary engineers, environmental engineers and building merchants in the 32 counties of Ireland.



# Nuclear Contract for Kilkenny

O'Dwyer Specialities of Kilkenny won a major contract to supply the JET (Joint European Torus) project in Oxford with sophisticated electrical instruments. The project is part of the European co-ordinated nuclear fusion programme aimed at proving the feasibility of using nuclear fusion as a new source of energy, and is the world's largest nuclear fusion experiment.

JET was established for a twelve year period in 1978, having as participants, Euratom Atomic Energy Commission, the member countries of the EEC, plus Sweden and Switzerland. The annual budget for the project is about £60-£70 million.

Mike English, Senior Project Engineer with O'Dwyer Specialities, will be responsible for design, procurement, installation and commissioning of the new instruments.

O'Dwyer Specialities are already well-known on home markets where they sell to the brewing, dairy and chemical industries.



• Shires Ireland are to sponsor Therese Carroll, a student who is studying for the Building Services Engineering Diploma and Degree Course in the College of Technology, Bolton Street. At the reception to announce the new Educational Sponsorship by Shires were: J. Brendan Whooley, Managing Director Shires Ireland (left), Seamus Brennan, TD a guest at the function and Oliver McNulty, Head of Department of Engineering Technology, College of Technology, Bolton Street.

## OCTABUILD EXHIBITION

Eight major Irish companies engaged in the manufacture of products for the building industry have joined forces to mount an exhibition of their products which is directed at all those who purchase or influence the purchase of building materials.

The exhibition, called "Octabuild", which was officially opened by Fergus O'Brien, TD, Minister of State at the Department of the Environment, toured different venues throughout the country. Its aim is to demonstrate to a broad cross section of the building trade the quality and competitiveness of Irish building products.

The companies involved are: Gypsum Industries; Irish Cement; Irish Metal Industries; Irish Roofing Felts; Moy Insulation; Sanbra Fyffe; Tegral Building Products; and Wavin Ireland Ltd.

Between them these com-



• Octabuild — at a reception in Buswells Hotel, Dublin, to announce details of the Octabuild series of exhibitions were: Ian Gallagher, Sanbra Fyffe; Tom Richmond, Tegral and Tom Conroy, Irish Cement.

panies employ more than 2,500 people and have an annual turnover of £170 million.

Although the companies vary greatly in size they have a number of factors in common. Each has established a reputation for the quality of its products and for technical

innovation in its manufacturing. Each company's products have been certified by the Institute for Industrial Research and Standards or are currently undergoing the process of receiving Certification. This latter aspect is of particular importance.

## BUILDING SERVICES MADE EASY

AECAD International Ltd held the first Irish exhibition and demonstration of its new building services software packages at the Cantec Centre, Merrion Road, Dublin, last last month.

While there are already a number of systems available on the marketplace, none are as ideally suited to the Irish situation as AECAD's.

Before talking about the system, it's important to understand a little about the background to the company itself. Suffice it to say that AECAD International grew out of an idea spawned within J N & G Traynor & Partners and is now run by managing Director Sean Ryan (formally an Associate of Traynors) who is an experienced practitioner in building services and technical software production.

After much experimentation and research AECAD identified a need for a building ser-



• Pictured at the Irish launching of AECAD International's computer-aided heating design system were Sean Ryan, Managing Director, AECAD (right) with Fintan Mulligan, Cannon distributors (Bryan S Ryan).

vices "package" capable of sizing an entire installation, producing schedules of materials and also finished drawings — at a price which would put it within the reach of even the smallest business. Hence the new system.

This package can be operated by anyone familiar with basic heating layout including the most junior draughtsman. The ease of operation is achieved both by the "user-friendly" approach — where the computer pro-

gramme leads the operator through the entire heating design procedure — and by using a built-in facility to draw the building and the heating layout on the screen.

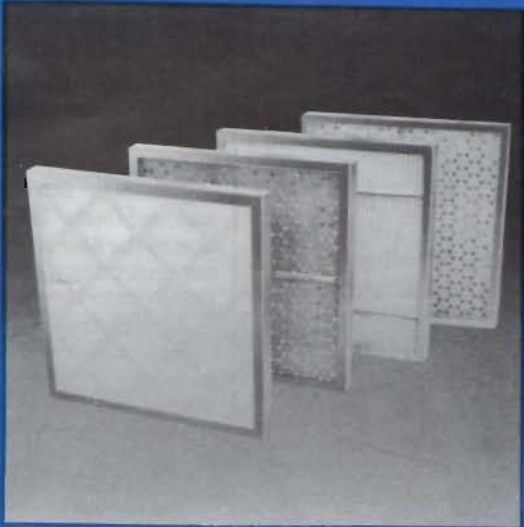
Modifications, alterations and detailed print-outs are simple procedures. Each print-out provides information of U-values; heat losses; radiator schedules; running costs; plant room sizes; layouts showing pipe sizes and radiator positions; and schedules of pipe and fittings (tee, bends, valves etc).

However, one of the system's key features is its flexibility. Consequently, it's virtually impossible to explain fully by way of the printed word. Why not contact Sean Ryan at AECAD International Ltd, Tel: 01-684017, and arrange an appointment for a full demonstration.

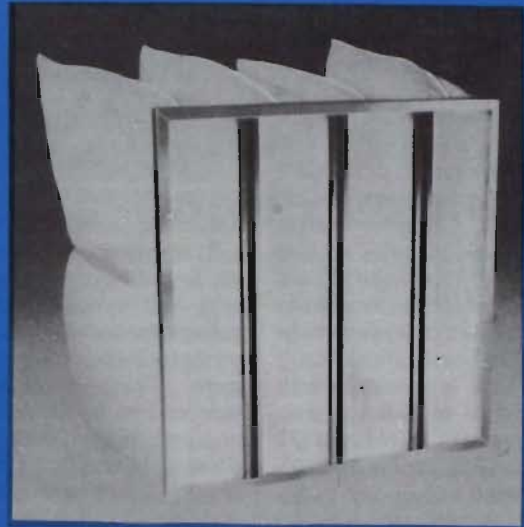


# Reconair Filters Ltd.

— A member of the Reconair Group



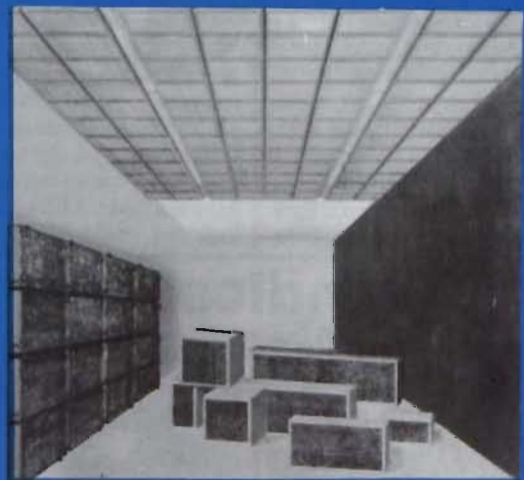
Reconair panel filter range.



Reconair ML bag filter range.



Reconair multi-pocket bag filter range.



Reconair "absolute" high-efficiency particulate air filters.

For the above & special filter requirements contact:

*Brian Scully, Managing Director*

## Reconair Filters Ltd.

Newcastlewest Industrial Estate, Newcastlewest, Co. Limerick

Telephone: (069) 62966

Enquiry Code No. 2

# Bedford Versatility

In the market for a new van of the medium size type? Then why not study the latest range in this category from Bedford. They have just launched their Midi range following a £70 million investment programme.

The new Midi gives Bedford a major extension to their coverage of the medium van market, the new van complementing the CF range by adding several new model variants.

The combination of the CF2 — with its panel vans, chassis cabs/cows, high weight coverage and now the 3.3 litre version — with the Midi's range of body styles, represents the best choice of medium vans ever offered by Bedford.

The Midi is available with either petrol or diesel engine, giving a total of 16 variants (32 counting LHD export models). The range of body configurations suitable for the medium sized contractor include the short wheelbase (standard roof) panel van; long wheelbase (standard roof) Panel van; and the long wheelbase (high roof) panel van.

Wheelbase lengths are 2.35 m and 2.69 m. The standard external roof height is 1.95 m while the high roof — 2.19 m — will be available on long



• One of the models from Bedford's new Midi range.

wheelbase panel vans.

Transmission on all models is via 5-speed overdrive gearbox with full synchromesh, and column-mounted gearshift for unobstructed cross-cab movement. Front suspension is independent, by wishbone arms and coil springs, with double-acting hydraulic telescopic shock absorbers and a stabiliser bar. Rear suspension comprises semi-elliptical 4-leaf alloy steel springs, plus double-acting shock absorbers.

Brakes are hydraulically-operated, servo-assisted, incorporating a tandem master cylinder with deceleration-sensing proportioning valve.

Steering is of the recirculating ball type with ratio variable between 23 and 27:1 (5,2 turns lock to lock). Kerb-to-kerb

turning circles are 9,6 metres for short wheelbase models, and 10,79 metres for long wheelbase variants.

The standard specification is to a very high level and includes halogen headlamps; Mocca brown cloth trim; Tinted glass all round; inertia reel seats belts; side loading door on the passenger side; heated rear door window with wash/wipe; comprehensive instrumentation and warning lights; heater with 3-speed fan; face level ventilation; radio; clock and cigar lighter.

Extensive body protection is a feature of the Bedford Midi, utilising zinc coated steel, zinc rich primer, Elpo complete dip and wax injection and bitumen underbody deadener.

## CIBS AGM

All members are reminded that the forthcoming CIBS Annual General Meeting is scheduled to take place at the Institution of Engineers of Ireland premises, 22 Clyde Road, Ballsbridge, Dublin 4 on 1 May next.

The proceedings will open at 6.30pm sharp with the reading of last year's AGM meeting minutes. This will be followed by the Hon Secretary's Report; the Hon Treasurer's Report; and then "questions arising."

Thereafter there will be the announcement and inauguration of the new committee with the final matter on the agenda being "any other business".

All members are invited to attend but only Corporate members will be allowed to vote.

## Solex Buys Landi-Hartog

Brendan Cole has been appointed Managing Director of Landi-Hartog (Ireland) Ltd, the automotive gas equipment distributors. He was formerly general sales manager of Talbot Ireland.

Mr Cole's appointment follows the acquisition of Landi-Hartog (Ireland) by Solex plc, part of the giant Matra Group.

Solex took over the manufacturing company — Landi-Hartog BV in Holland in 1983. Its acquisition this year of Landi-Hartog (Ireland) reflects its policy of expansion in the LPG motor fuel industry.

## Grundfos Pumps Expand

Grundfos Pumps (Ireland) Ltd officially opened its new factory and head office complex at Stillorgan Industrial Park, Co Dublin on 6 March last.

The unit has been specially designed to meet the needs of Irish customers by providing much higher standards of product availability.

Grundfos Pumps (Ireland) will assemble and supply the full Grundfos industrial pump range. These include the CP/CR vertical multi-stage centrifugal pumps (for boosting, boiler feed, washdown and general service pumping); LM/LP single-stage in-line pumps (for air conditioning, water supply and process applications), NM/NP end-suction pumps (for heating, boosting and water supply); and SP stainless steel submersible pumps (for borehole, irrigation, water supply and dewatering).



• Niels Due Jensen, Chairman of the International Grundfos Group with Peter Hooper, Deputy Chairman, Grundfos (Ireland); His Excellency Vagn Korsbaek, the Danish Ambassador to Ireland; and Dermot Murphy, General Manager, Grundfos (Ireland).

Stillorgan factory, plus comprehensive service and testing facilities, and an emphasis on ready availability mean that Grundfos (Ireland) offers many clear advantages for end-users.

The Grundfos Group, based at Bjerringbro in Denmark, began when the founder, Poul Due Jensen, started designing and manufacturing pumps in his house cellar. The Group has expanded rapidly since those modest beginnings and is now

one of the largest pump manufacturers in the world.

One of the secrets of the Group's success is its belief in manufacturing standard pump products from the highest quality materials in the most cost-effective way. A considerable amount of the Group's turnover is ploughed back into research and development — not only of new pump types, but also the manufacturing techniques to make them.



• Brian Scully, newly-appointed Managing Director, Reconair Filters.

# Energy Manager Handbook

The "Energy Manager's Handbook, compiled by the National Industrial Fuel Efficiency Service provides a wealth of practical information, statistics and formulae on all aspects of fuel and its efficient use.

The book contains data which is relevant to newly commissioned plants and to plants that have been in service for years. Much of the data is now difficult, or even impossible, to obtain elsewhere. The data included in the "Energy Manager's Handbook" will

enable engineers to practise the economies and conservation techniques that are becoming more and more part of an engineer's everyday responsibilities.

Packed with figures, tables and graphs, it gives the energy manager accurate and reliable sources of information for day-to-day use.

The handbook is available at £15.00 (St) plus postage, from Graham & Trotman, Sterling House, 66 Wilton Road, London SW1V 1DE.



• At a reception held recently in Dublin to announce the Hilti scholarships to undergraduates of the College of Technology, Bolton Street (Dublin) and to the University of Ulster (Co Antrim) were: Oliver McNulty (Head of Engineering, Bolton Street); Professor D McCloy (University of Ulster); Michael O'Donnell (Principal, Bolton Street College of Technology); Dermot O'Sullivan (Managing Director, Hilti Ireland); and Professor R B Schofield (University of Ulster, Co Antrim).

## Major Toussaint Nysenne Launch

Heat Recovery and Air Conditioning Products — sole distributors for the Belgian manufacturer Toussaint Nysenne — are launching their product range in Ireland. The company has been established to meet the needs of consultants and contractors in providing a high standard of technical back-up for the wide range of products, chosen for their quality in both design and manufacture. Suitable distribution facilities will be established to meet and service customer needs and agencies are available from the company.

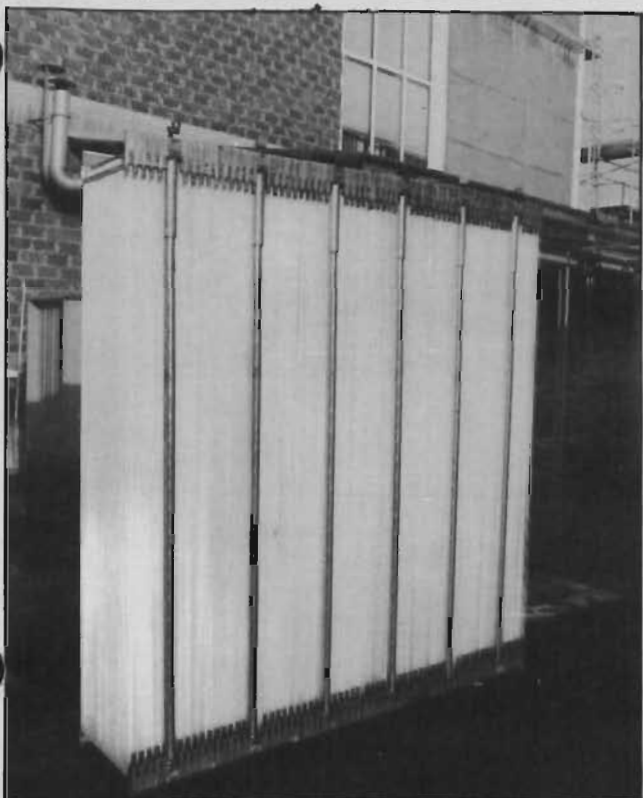
The equipment range is of a very high quality and has a competitive price structure. This is a result of the individual computer sizing facility for installations provided by Toussaint Nysenne. The range of equipment includes:

**Aerocube** — A complete range of air handling units manufactured in self-supporting modular configurations, with single or double skin panels. A 25 mm thick thermal and acoustic lining is standard. A new staggered fin design in the

designs in the coils returns very high efficiencies in heating and cooling. Standard sizes handle air flows of 0.3-30 m<sup>3</sup>/S (up to 50,000 cfm) but any size can be made to suit the clients requirements;

**Thermoduc** — a super heat conductor, featuring tubes which are hermetically sealed individually at both ends. This ensures security of operation in the event of leakage. A sealed place effectively separates the two airstreams, preventing any cross contamination between them. Efficiency of the heat pipes ranges from 60% up to over 90%;

**Amazone** — a cable humidifier/heat exchanger featuring a unique tensioned polyester cable system. The 1mm diameter cables act as carriers for water in the recovery process, and the continuously moving contact surface ensures virtually clog-free operation. Energy can be recovered from hot, wet corrosive gases and the Amazone can also be used in cooling and drying of air, as well as dedusting of gases.



• An example from the Toussaint Nysenne range now being distributed by Heat Recovery & Robey Air Conditioning Products.

# STEAM PRODUCTION AND HEATING EFFICIENCY START WITH A ROBEY BOILER AND GO ON AND ON AND ON AND ON AND ON

- 212 Boiler/Generator versions — to suit your specification.
- Coal, Gas, Peat, Wood, Oil and Waste Heat firing systems.
- Steam outputs from 1,000 to 60,000 lbs/hr.
- Hot Water Generators giving 5 to 60 million BTU's/hr.

S.L. COMBUSTION SERVICES LTD. LAHERDANE, BALLYVLANE, CORK Tel: 501411  
158 CASTLEBAGH RD., BELFAST BT5 5FT. Tel: Belfast 59282  
Published by ARROW@TU Dublin, 1985

Enquiry Code No. 3



# ROBEY



boilermakers of international repute





This rich new colour called Romany, by Armitage Shanks, evokes the wildness and warmth of the travelling life.

See how Romany's depth of colour enhances the distinctive lines of the Clarendon suite featuring everything from basin to bidet. Add matching accessories. Then complement it all with co-ordinating taps and fittings.

Discover a whole new world of bathroom co-ordination in our lavish colour brochure. Post the coupon today and roam through your FREE copy.

# Romany

armitage shanks **A**

All the best in your bathroom

PLEASE SEND ME MORE DETAILS OF YOUR LATEST RANGE OF BATHROOMS AND COLOURS

Name .....

Address .....

<https://arrow.tudublin.ie/bsn/vol24/iss4/1>

DOI: 10.21427/D76M6

Postcode .....

ARMITAGE SHANKS (IRELAND) LTD., Cookstown Estate, Tallaght, Co. Dublin. Irish Factory, South Quay, Arklow, Co. Wicklow.

Enquiry Code No. 4

# Hygiene & Sanitaryware

While a great many features of this type concentrate on particular appliances, this month *Irish H&V News* gives some guidance and advice on the actual location and situation of such appliances.

Sanitary accommodation is defined as a room or space which contains one or more WC or urinal fittings. A wash basin is *not* a WC fitting. Drawings from the Guide to the Building Regulations explain this definition. Sanitary accommodation cannot open directly into a habitable room or a room used as a kitchen or scullery or a room where persons are habitually employed. This intermediate space, which is necessary, is often referred to as a lobby or ventilated lobby.

Certain standards of ventilation have to be upheld. The most important of these is that the sanitary accommodation must be ventilated by a window or skylight which gives a free area of at least one-twentieth of the floor area; failing this, mechanical extraction discharging into the open air giving at least three air changes per hour must be provided.

In small office buildings, many of which were originally wellings, there is relatively little freedom to locate the sanitary accommodation. The shell of the building normally dictates where it will go, either by the presence of existing pipes and manholes or by a range of room sizes in the building, few of which are appropriate to sanitary accommodation.

In large and especially in a

custom-designed multi-storey office buildings, the location of the core, and thus the sanitary accommodation, can have an important effect on the rest of the office space. This is because the core of an office building is likely to last for the life of the building and has probably been used to define the range of uses of office spaces in the building.

When locating the core and sanitary accommodation the following factors should be borne in mind:

- Does the sanitaryware accommodation need to be compartmentalised or can it be dispersed?

- The length and directness of the route to the accommodation for users;

- The total number of each sex and whether the relative proportion is likely to change;

- The limitations of future rearrangements of office activities, especially if certain activities have sanitary accommodation provided *en suite*, eg directors' suites, boardrooms, reception areas;

- Is the building to be multi-occupied and will this arrangement change?

There are no hard and fast rules about the size of lavatory accommodation or wash rooms, so it is safer to consider the minimum amount of space required to perform the activity.

#### Equipment, cleaning and maintenance

**Urinals:** Can be slab, stall or basin types made of porcelain, stainless steel or plastic with visible or concealed cisterns.

Provide ashtrays. Special floor treatment for slab and stall types may be needed. Allow adequate access for concealed cistern.

**WCs:** Can be floor-mounted or wall-hung and have visible or concealed cisterns. Provide adequate access for concealed cistern. Check partition strength for wall-hung systems.

**WC cubicles:** These can be either in situ (brick block, wood, terrazzo). Provide ashtrays, toilet roll holder, coat hook. Compare prefabricated systems in terms of cost, partition thickness, cleaning hindrance at wall, and floor strength and durability.

**Washbasins:** These can be individual, a range of basins, a handspray basin and/or fountains and troughs.

Wall-mounted taps aid cleaning and basin replacement. An individual basin is easier to replace than one in a range. A soap holder or dispenser is necessary.

**Drying equipment:** (a) personal towels; (b) cloth roller towel dispenser; (c) paper towel dispenser; (d) hot air dryers; (e) mirrors.

With (a) and (b), a laundering service is required; (c) requires regular replenishment; (d) needs regular servicing to avoid inconvenient breakdowns. (NB: some models are hand dryers only). With (b) and (d), one unit should be provided to 2-3 basins. Used paper towel receptacles are required. Allow adequate-size mirrors for short and tall people and locate away from basins.

**Other facilities:** (a) sanitary towel vending machine; (b) sanitary towel disposal incinerators (required where more than 10 females are employed); (c) waste bins; (d) clothes-hanging provision.

Replenishment of (a) is required. For (b) gas is most efficient, but there may be no other requirement for gas in many parts of a building; servicing is also required. For (c), used paper towel receptacles may be needed.

**Cleaning and maintenance:** Generally, for lavatories and washrooms, all wall and floor surfaces should be hardwearing, impervious and easy to clean with all angles and corners coved. In large installations it may be worth providing a trapped floor outlet to assist washing down. Any electric socket for cleaning should be provided outside the area.

These parameters and guidelines are now more important than ever, especially in the domestic context with the bathroom now taking on a "broader" significance.

Product innovations, new product introductions and the vast choice of colours, styles and "not merely functional" designs all bear witness to this.

The bathroom is fast-becoming something of a rest room, a place of relaxation. This development should be encouraged by the trade and exploited to the full.

## Bath Pack Success

During 1984 a number of developments were introduced into the Irish bathroom market by Armitage Shanks. Pride of place must go to the bath pack concept which is of great interest for the merchant, builder, plumber and retail purchaser.

The bath pack which is  
Published by ARROW@TU Dublin, 1985

shrink-wrapped, palletised, has transformed the operation for the merchant — one-stock, one-price — and a considerable saving on labour and transport costs. For the builder and plumber, there is ease of handling and stocking on site, to which can be added a higher degree of security. For the retailer, there

is the bonus of a competitively priced pack, all of which carries the Armitage Shanks guarantee of quality.

The pack normally consists of base, pedestal, cistern and closet together with ½" and ¾" CP taps, seat and cover, bath and side panel plus bath and basin wastes. The Sandringham close-coupled was introduced in late 1984. A beautiful design with a competitive price which now makes it possible for a far larger segment

of the market to enjoy the luxury of a close-coupled suite in their bathrooms.

The Carlton suite, an up-market close-coupled washdown suite with matching basin (in two sizes) and pedestal, has proved itself to be a showstopper at a number of exhibitions and is a serious rival of the syphonic suites particularly in the area of price.

Also successfully consolidated in 1984 was the whirlpool kit fitted to a range of

# Sanitaryware

luxury baths — the status symbol of the 80's.

The wide selection of handwheels for Starlite 2 brassware in CP and lustron gold ensures that touch of individuality in the bathroom beloved by most possessors of upmarket bathrooms while the new Starlite domestic thermostatic shower valve which combines style with a very competitive price is a must where a shower for the young is involved.

Decorated suites have taken on a new lease of life and Armitage Shanks present a range of four to suit most tastes — the Versailles with beautiful gold decoration on avocado, caprice decoration on white, sweetbrier decorated champagne and shangri-la decorated wild sage.

Add in the new Ambassador — the shower enclosure that looks so good all by itself — and one can understand why Armitage Shanks looks forward to the challenge of 1985.

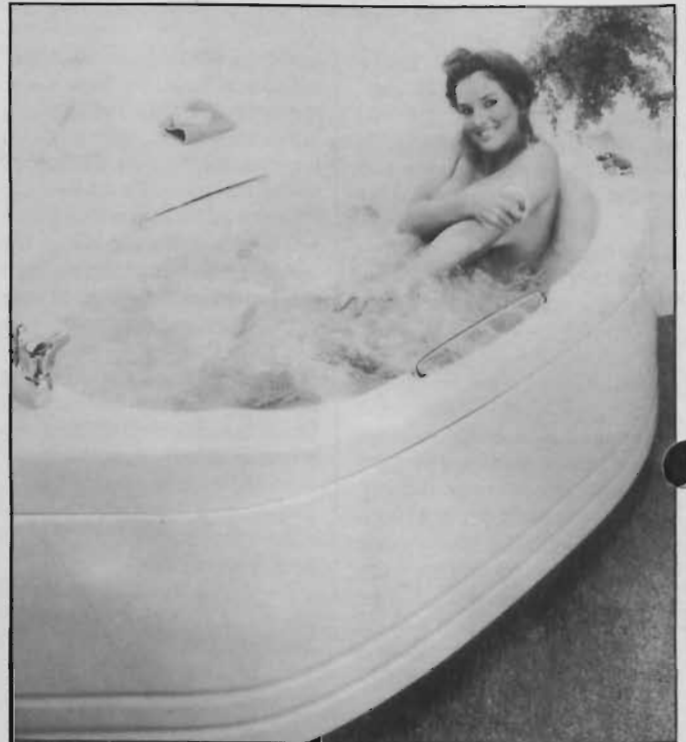
(See Advertisement for Enquiry Code No).

## SHIRES INCREASE MARKET SHARE

At a two day presentation and exhibition of bathroom suites and individual sanitary ware items, late last year, Shires Ireland Ltd emphatically demonstrated how the bathroom nowadays has taken its place alongside the most important rooms in the house.

Shires showed their new season's collection of bathroom suites plus accessories and, in addition, products from their overseas suppliers including Showerlux, Aqualisa, Comisa Pressalit, W & C Sissons and Derwent Mac Dee.

Certainly visitors to the Westbury Hotel where Shires held their exhibition, could see at a glance everything which would be required in the bathroom of 1985. Complete suites were shown, including Shires latest — Carousel, the Prelude and the Opus — which feature the Largo bath, with its extra spacious "double-bathing" area.



• Shires new Whirlpool 6 or 8 jet system combined with the Eros Bath.

**Bathroom Harmony in Trent Ware by Johnson Brothers**

Distributed by:  
**R.T. LARGE & SON LTD.**

Spitalfields, Dublin 8.  
Telephone: 783199 and 783326

Shires Ireland also introduced the exciting, new whirlpool bath. Operated on the principle of physics, the whirlpool uses a series of six or eight jets around the bath, to provide jets of water which are intermingled with air, thus providing the bather with a soothing water massage. A control allows one to adjust the amount of air or increase the strength of the jets, or even turn off fully the unique Whirlpool system and use the bath normally.

The Whirlpool is supplied in a choice of gold or chrome plated finish and the jets provide complete body coverage while bathing.

A new toilet seat, the "Naiad", was launched which designed in a stylish sculptured line, featuring moulded curves. The Naiad is more hygienic and more durable and is supplied in white plus several attractive colours.

Shires Ireland market and distribute product lines of several international manufacturers. Included are the latest items from Aqualisa shower

systems; Comisa of Italy who make brassware; Pressalit who manufacture toilet seats; W & G Sissons of Sheffield, renowned for their stainless steel products; Showerlux, the market leaders in Europe for shower enclosures; and finally Derwent Mac Dee.

Managing Director J Brendan Whooley, told *H&V News*; "we are now in a strong position in the marketplace and can provide the largest range of plumbing and bathroom products available from one distributor in Ireland. Shires are delighted to introduce some

internationally-proven brands on the Irish market and we expect our market share to grow considerably in the coming month."

(See Advertisement for Enquiry No).

## Vitreous China Fixtures

Johnson Brothers continue to market their Trent Ware brand of vitreous china bathroom fixtures, as has been the case for many years past.

Johnson Brothers endeavour to combine the best of the old and the new. In addition to the latest fashion colours, they continue to produce colours such as pink, primrose, turquoise and sky blue. These colours were extremely popular in the late 1960's and early '70's and there are many thousands of houses built during this period in which bathrooms in these colours were installed. Many of the households have no wish to change the colour schemes of their bathrooms, and this is the

reason that Johnson Brothers continue to have these colours in their range. Replacement items are available in these colours, so there is no reason to install a complete new bathroom suite.

Over the past decade or so the bathroom has become a focus of fashion both in design and colour. There was a period of the pastel shades, then came the era of bold colour schemes bringing with it the dark rich shades of Sorrento Blue, Sepia, Autumn and Bali Brown. Now they're back with the pastel shades, the most popular of all being Champagne. Colour such as Wild Sage and Burgundy have replaced the

browns and are also extremely popular. Johnson Brothers range of colours produced in the Astura, Fiesta, and Lucerne suites are the complete answer to those wishing to improve their bathroom.

Their newest suite, the Astura, is very reasonably priced and has provided a winner of the English market. It features an attractive 23" x 18" basin and is available in their full range of colours, old and new.

Distributors here are R T Large & Son Ltd, (rear of Francis Street), Spitalfields, Dublin 8, (Tel: 783199/783326).



Rondo Bath



Prelude Suite

**From a Bath to a Suite. . . Shires can supply every item — including all accessories! Check out our new Whirlpool 6 or 8 jet bath!**

*Shires Ireland distribute through Merchants countrywide:*



**Shower Systems**



**Shower Enclosures & Screens**



**Brassware**



**W & G Sissons Industrial Sanitary Ware**

**BROOMHILL ROAD, TALLAGHT, DUBLIN 24 PHONE: 515877**

## IDEAL FOR EVERY NEED

Ideal-Standard, Europe's leading bathroom equipment manufacturers, offers a range of products for every need — baths, wash basins, water closets, bidets, shower trays, accessories shower mixers and taps. The ranges are priced to suit almost every requirement and are available from Ideal-Standard's agents, K M Reynolds (Ireland) Ltd, of Unit 2, Knockmitten Lane, Naas Road, Dublin.

Michelangelo, Linda, Brasilia, Tulip, Tiara and Coroline are established Ideal-Standard names for high quality, design-related bathroom suites which are available in top fashion colours, including the recently-introduced Whisper Grey.

Design, quality and value are the essential ingredients of Ideal-Standard's bathroom equipment and they work closely with leading international designers to provide products which appeal to the



• The bath, wash basin and water closet from Ideal-Standard's fashionable and design related Tulip bathroom suite. Details from K M Reynolds (Ireland).

consumer, and, consequently, offer substantial benefit to the stocking merchant and installer.

Ideal-Standard are innovators, too. They developed the high technology ceramic disc valve principle —

for mixers, taps and showers — which eliminates washers and the problems of wearing and dripping which are associated with them.

A new generation of high-performance shower mixers — with all models based on the

acclaimed ceramic disc valve principle — was recently introduced. It comprises single lever high flow mixers, dual control high flow mixers and thermostatic shower mixers.

Ideal-Standard also offer conventional fittings with their comprehensive Jetline range, which includes a wide choice of mixers and taps for baths, wash basins and bidets, while the recently-introduced Jetline Compact mixers mean that quality mixers are now available at the same price as pillar taps.

There is a Jetline Compact twin-flow bath mixer and basin mixer, and a bath shower mixer which is packaged complete with the shower kit.

Ideal-Standard's exclusive Whirlpool 2000 system is factory fitted and tested on eight of their range of acrylic baths which can satisfy most bathroom requirements.

## The Stainless Solution

Stainless steel is fast becoming the thing to specify, not only in public places which are prone to vandalism, but also into offices, hotels, restaurants and sports complex.

Manufactured from type 30A stainless steel, Manning & Usher can supply: urinals, wash basins, vanity basins, wc pans, drinking fountains, asian closets, sinks, cleaners sinks — hospital equipment — plastic sinks, slop hoppers, bedpan washers, scrub up troughs, shower cubicles, mirrors which are, of course, unbreakable — and like all their stainless products — easy to keep clean.

**Urinals:** (i) One-piece: no messing about with channels, backslabs, return ends, sparges etc. The urinal is delivered in one piece, with exposed or concealed pipes so fitting is easy and cheap;

(ii) Measurements: they deliver your slab in exactly the length required — ie if the space is 6'7½" they supply a urinal 6'7½". This eliminates fillers and grouting.

(iii) Delivery: — within three weeks from date of order;

(iv) Price: — nearly pound for

pound with ceramic — (however — ask them to quote and consider the saving on fixing).

**Wash Basins:** Single basins or ranges — vanity basins or ranges of vanity basins, built-in wash basins with push button operation.

**WC Pans:** Whether it be pedestal type, wall hung or shrouded with concealed fittings they can supply;

**Drinking Fountains:** Wall hung or pedestal type complete with "bubbler";

**Hospital equipment:** Standard hospital equipment, scrub up units, plastic sinks, slop sinks, slop-hoppers, sluice sinks, shower cubicles etc can be supplied in any dimension. These units can also be supplied in type 306 acid resistant stainless steel.

**Mirrors:** No seven years bad luck with broken mirrors (no nasty cuts or nastier insurance claims either) if you fit stainless steel mirrors — for pubs, hotels — any public place — up to 8' x 4' in size — and of course — unbreakable.

They would be delighted to quote for any specials in stainless steel. The goods are

manufactured by Stainless Design Services, in Swindon to the highest standard of finish.

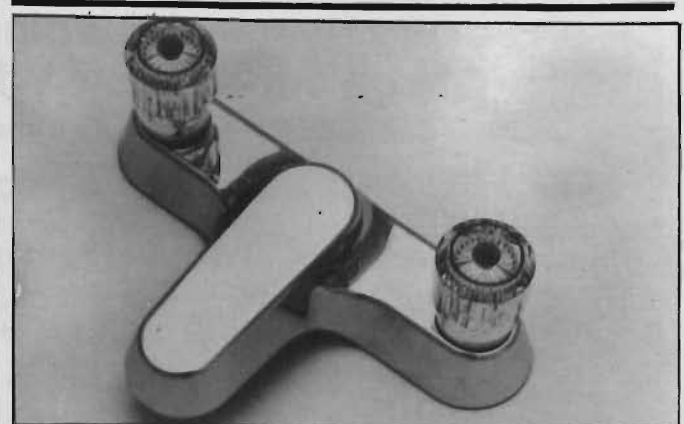
**Peglers:** To complement the range of stainless steel sanitaryware, Manning & Usher can supply the range of Peglers quality taps and controls. The new 878 and 877 delayed action taps give a flow or spray of water for 20 seconds ensuring energy conservation. These taps come in a sleek, anti vandal shape.

They can also supply the Pre-stex non concussive (press fitting). For the surgery they have wrist action mixers and taps for bath, basin and sink.

**Bathrooms:** For your special bathroom see the Allia range introducing the new Countess suite in ivory silk — the latest in matt finishes, with complementary taps fitted with ceramic inserts.

Information on all the above products from Frank Hyland, Phyllis Mooney or Mike Usher at Manning & Usher, (Tel: 509761/552769); Telex: 90285; or in Northern Ireland — McGregor & Manning Ltd, Tel: 084-731816.

(See Advertisement for Enquiry Code No).



• The Jetline Compact twin-flow bath mixer from Ideal-Standard. Details from K M Reynolds (Ireland).

Irish Instantor<sup>®</sup> compression couplings. The right connections. Made in Ireland since 1934. Solid, reliable, the market leader. Standard bearers for Irish workmanship, Irish industry, Irish employment.

Irish Instantor is the only Irish made range and complies fully with the Irish Standard Specification for Compression Couplings, issued by the Institute for Industrial Research & Standards I.S. 239:1980. It is also the only range licensed to use the Irish Standard mark. Proof that Irish Instantor are setting the standards – and keeping them high – against increasing competition from overseas. Competition that will inevitably threaten Irish jobs.

Only the Irish Instantor range bears the proven name and the standards to match.

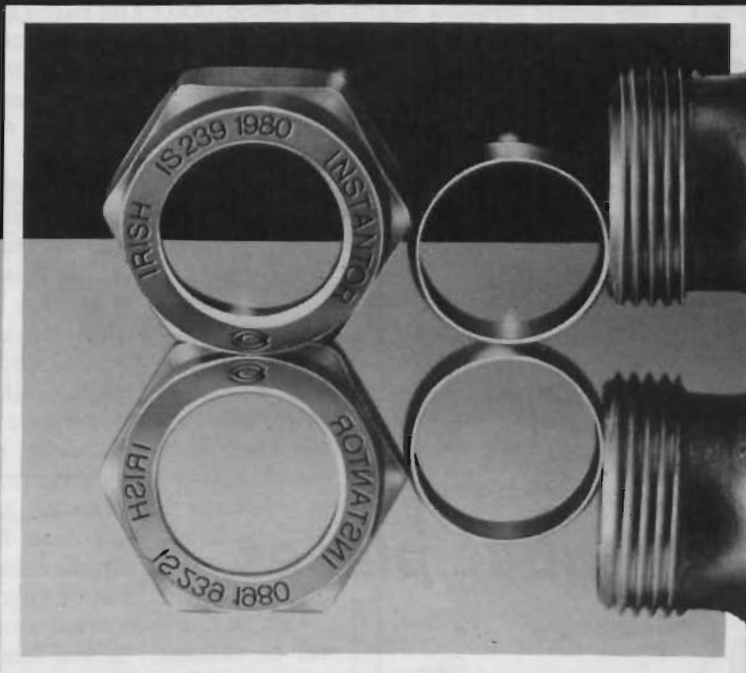
It makes plumb good sense to choose Irish Instantor<sup>®</sup> – every time.

The only range licensed to use the Standard mark.

**Sanbra Fyffe**

Everything on tap for plumbers.  
Sanbra Fyffe, Santry Ave., Dublin 9.  
Telephone: 379291. Telex: 25325.

# Buying Irish Instantor<sup>®</sup>



## makes plumb good sense



# Sanitaryware

## Sanbra Fyffe — The 'Standard' Bearers

Eirline bathroom taps and showers, including sink mixers, were introduced nearly three years ago to cater for the popular segment of the market and are available from builders and plumbers merchants nationwide. Eirline is manufactured by Sanbra Fyffe in their modern factory in Santry.

The bath shower will fit most baths and the unit is ideal as a replacement for separate bath taps. Various types of attachments can be used in conjunction with the shower and an efficient and cost-saving facility is available to moderate outlay.

All items in the range are fitted with either acrylic or chromium plated covers and are produced to BS 5412. The gleaming chromium plated finish is a special feature of Eirline and is capable of satisfying the requirements of the most discerning purchaser.

The Eirline range also includes independent shower mixers suitable for fixing in

separate shower cubicles or over baths. Basin and bidet sets with monobloc and three hole are now available.

They are proud to announce that Eirline bathroom fittings were chosen and installed in the Westbury Hotel, one of Dublin's most prestigious establishments. Other hotels to install Eirline are the Kilmore, Cavan and the Montague, Portlaoise.

Irish Instantor is the only range of compression couplings manufactured in Ireland to IS 239 1980 and licensed to use the Standard Mark. This means that they comply in every respect with the Directive issued by the Department of Environment requiring the use of compression couplings which are certified to comply with IS 239 1980 and which bear the Standard Mark of the IIRS on all

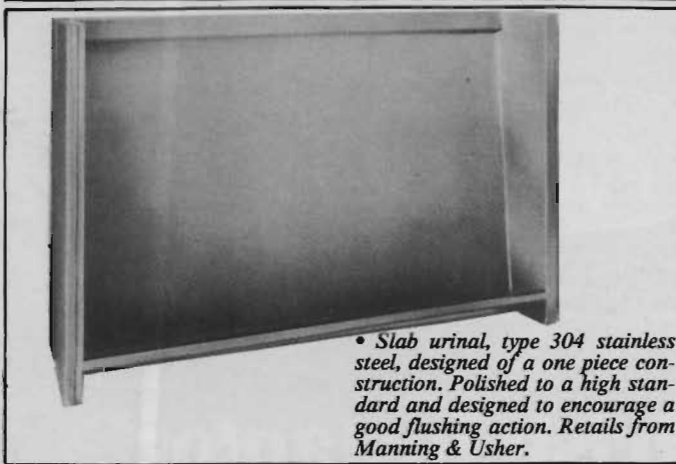
grant aided projects in the public sector.

A full range is available to cater for every application in sizes from 1/2" to 2". Irish Instantor joints are easy to make because no special preparation of pipe work is necessary and two spanners are all that are needed. The risk of fire from blow torches is entirely removed and joints can be made and remade without trouble. Irish Instantor are the standard bearers.

Sanbra Fyffe are the sole distributors of MNG thermostatic radiator valves and they are certified to comply with all the strict requirements of DIN Standard No. 3841. Technical literature is available on request.

An attractive range of plastic traps manufactured by Jimten of Spain have been added to the product portfolio recently and are highly recommended.

(See Advertisement for Enquiry Code No).



• Slab urinal, type 304 stainless steel, designed of a one piece construction. Polished to a high standard and designed to encourage a good flushing action. Retails from Manning & Usher.

# UNBREAKABLE MIRRORS

**Ask Manning & Usher for the  
Stainless Solution  
For reflections in all public places.**

**MANNING & USHER LIMITED**

UNIT C2, BALLYMOUNT INDUSTRIAL ESTATE, BALLYMOUNT RD.,  
WALKINSTOWN, DUBLIN 12 PHONE 509761/552769 TELEX 90285

<https://arrow.tudublin.ie/bsn/vol24/iss4/1>

DOI: 10.1108/BSN-04-1985-0011  
**MCCORMACK & MANNING BELFAST PHONE 084-731816**



Interest in the sharing of profits has been raised by the Finance Acts of 1982 and 1984. Most industrialists in today's business climate will utter "what profit"! Others will tell you that their main objective is just 'survival' and they do not have the time or inclination to look into profit sharing. One cannot but agree with a businessman if he has such a problem and to be fair, his employees are also more concerned about a "job" and the problem of their net take home pay.

However, the two Finance Acts have made significant tax concessions to business and to individuals relating to profit related shareholding. The relevant clauses of the Finance Acts in question, which merit close study, can be summarised as follows:

*Present legislation allows for up to £5,000 worth of company shares to be allocated to employees in any one year.*

*These shares can be shares in a private company, a public company, or even a multinational who's shares are quoted on the New York Stock Exchange.*

Should the shares be then held under specified trust arrangements for at least seven years, the proceeds from the sale of the shares are free of income tax. Any persons in the higher tax brackets can immediately see the benefits since, at a 60% rate of personal taxation, for example, the cash equivalent based on £5,000, could fall to around £1,600 after all deductions. Given reasonable investment rates, plus allowances for inflation, such a sum invested would not match the equivalent share concession.

In addition, there is of course the opportunity for capital gain although capital gains tax would apply. There are also options to dispose of the shares earlier but, of course, with reduced benefits.

From the company's perspective, there are complementary concessions since the share allocation does not attract corporation tax and there are incentives relating, for example, to enhanced cash flow deriving from newly-issued shares. In simple terms, the company retains cash which can reduce bank borrowing and so on.

The quiet public reactions so far from the institutional I.R. groups should not be interpreted as lack of interest; considerable consultation and discussion has been taking place. While it is still early days, certain basic positions are now emerging and, like all historical manifestations of interest in this subject, the combined political, social and economic environment is a key factor.

# GUEST WRITER

## Profit Sharing — What Profits?

**JOHN LYNCH**

The advocacy of Profit Sharing and Employee Shareholding by John Bruton, TD, Minister for Industry, Trade, Commerce and Tourism has provided a focal point for discussion. The Minister stated that "The adoption of profit sharing scheme and employee shareholding on a wide scale would mark a radical change from our traditional approach to industrial relations". Such statements have, not unsurprisingly, provoked reaction.

Thus, on one plane the subject has inevitable controversial overtones



• John Lynch — an occasional contributor to Irish H&V News — is Chief Executive of the Irish Productivity Centre and was formerly Director of Business Policy with the Confederation of Irish Industry. He was also the first Smurfit Professor of Business Law at Galway University.

deriving, it must be stated, not from the subject itself but rather more from perceived applications within a wider framework. The ICTU is uneasy if it is the intention to foist employee shareholding on companies as an inherent component of a restrictive wage policy. Experience tends to show that this would be unlikely to succeed. UK practice, for example, clearly points to the need for a fine divide between the salary/wages component of remuneration and the profit share or shareholding schemes introduced by firms.

However, it could arguably have attractions for certain firms, particularly if the cash alternatives continued to attract penal taxation. On the other hand, the FUE has also pointed out that wages/salaries expectations are unlikely to be diminished by profit sharing arrangements. We can, therefore, clearly identify one key item in the debate with I.R. implications — the possible "intrusion" of share ideas into the remuneration area. Clearly the arguments for and against need further examination.

At the level of the European Community one detects in their recent Economic Report of October last a growing concern with correcting the bias which appears to have existed toward capital in recent years at the expense of employment, but without, at the same time, reducing total investment effort. Thus any moves, however modest, that have the potential to link investment with employment protection and generation are likely to receive very close attention and again the Minister has drawn particular attention to this aspect.

The key issue however, is whether we can translate improvement of enterprise performance into jobs. This is deep water and I make quickly for the shore by simply stating that the influence of our subject as a potential source of enhanced investment, which in turn might favourably affect the labour market, is one plank in the debate and one which should concern personnel specialists given their vital role at the interface of employment and competitiveness.

An immediately related area is, of course, the corporate and individual taxation issue and what is seen by many as the diminishing incentive to performance at work. A few Euro-statistics are interesting here — the ratio of net wage income (for four large European countries) to total labour costs, inclusive of social security, declined in recent years as follows:



**GUEST WRITER**

	1971	1981	1984
Europe	59%	51%	46%
			(estimate)

A comparison with the United States is interesting:

	1971	1981	1983
U.S.A.	69%	59%	66%

(Source: European Economic Report — Oct. 1984)

These figures beg many questions beyond the scope of this article, but clearly the taxation and incentive perspective is a major one in approaching our topic, perhaps the dominant one as viewed by many.

Since financial participation is clearly a form of employee involvement, developments in this field generally are worthy of our consideration. Let me quote straight from a paper given by an EEC Commission official at a Conference in Ireland some years ago:

*"It should be stressed, however, that the Commission has always considered and continues to do so that independently of whether shares are held by staff or profits shared out, the right of*

*workers to participate in decision making at undertaking level is justified by the mere fact that wage earners participate in the production process in the undertaking".*

Some personnel practitioners would agree with this sentiment, others perhaps not, but it does raise the question as to whether or not financial participation can be regarded as a total form of involvement or merely as a supportive dimension. Another question that must also be considered is the information disclosure aspect; any scheme for financial involvement will raise information sharing issues. However the implementation of the Fourth EEC Directive has been promised.

In addition, the National Planning Board's Recommendation No. 131 sought to set up economic sub-committees within all enterprises in Ireland employing more than 100 persons clearly such a structure would influence and catalyse debate on potential profit sharing arrangements within organisations.

The other question within the involvement debate is the casualty issue, in other words, does the existence of financial participation lead to

other forms of involvement? Evidence is scanty but, of all groups, the New York Stock Exchange recently indicated that large companies with employee share plans were four times more likely to have "Quality of Worklife Programmes". It is, of course, a classic chicken and egg situation.

It is clear to many that we must also be prepared in our deliberations to seriously consider what many will perceive as discriminatory factors within a spread of profit sharing and employee share ownership ideas. What of those who cannot take part? the unemployed, the public sector workers and so on. This argument will find little favour among those who argue for incentives for the direct wealth creating sectors but nevertheless, it could lead to acrimony.

In conclusion, the subject of profit sharing or employee shareholding is not new and yet, like many other ideas, it may have been awaiting its time; however, it is vital that the arguments for and against are understood, so that at the level of the company its implementation is of benefit to all concerned — the company, its management and its employees.



**W**ith Gemini, Roof Units Group bring you the most comprehensive range of twin fan units available today which offers you a variety of options to meet the many differing needs each application can demand.

Duties range from 40 cfm to 4615 cfm and perform against pressures upto 1.5 ins. wg.

The mini twin unit is ideal for toilet and bathroom ventilation and its versatility makes it suitable for surface, flush or duct mounting. Automatic changeover is a standard feature.

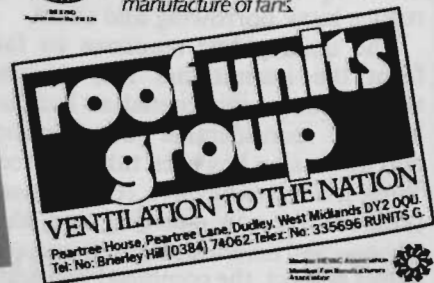
Roof extract installations are well catered for with the G2 range of 10 models each with two independent fans giving full stand by. In high quality glass fibre housings they are strong and durable.

The TDF range of duct housing provides full run and stand by with two independent fans in a housing of heavy gauge steel.

All fans are powered by the revolutionary external rotor motor — powerful, quiet and fully speed controllable. Automatic changeover panels are available for every model.



Roof Units Group is a BSI registered firm complying with BS5750 the standard of quality control for design, engineering and manufacture of fans.



**NOT****ANOTHER SIDE OF...  
...FO EDIS REHTOMA****HUGH  
MAGUIRE**

As you may have noticed, the title of the column has changed slightly this month from "The Other Side Of. . ." to "Not The Other Side of. . .". The reason for the temporary change is the personality we talked to — Hugh Maguire — who has just celebrated (if that is the correct word) 50 years in the heating business. We thought it would be interesting to talk to him about his experiences over that time, his days in the army etc. However, hard and all as we tried, the theme that dominated the conversation from beginning to end was heating.

The start for Hugh was, like many at the time, a stint in Belvedere College followed by five years in the drawing office in Haydens in the company of another well-known industry personality — Noel Traynor. The manager of the company at that time was Dick Glasgow and the drawing office was run by Freddie Pheasant — both names to bring back many memories.

What brought Hugh's time in Haydens to a halt was "the emergency" or rather what the rest of the world referred to as World War 2. Hugh volunteered and ended up a commissioned Captain in the Artillery, where he served in all sections. It was during this time that he met his future wife, Maeve.

At the end of the war he applied to stay on in the army but, even after a very distinguished career in the Artillery, he was refused permission. So, with just five weeks notice and a few bob in his pocket he was back in "civvy street" looking for work.

As events unfolded, it was just as well that the army did not hold on to Hugh because the heating business would have lost one of its finest and innovative engineers.

Hugh's second heating career began in the drawing office of Maguire and Gatchel, one of the well-known contractors of the time. However, by 1946 Hugh had moved to the drawing office of Kennys, that is J A Kenny & Partners, who of course are still one of the country's leading consulting engineering firms.

The firm at that time was run by the father of the present head of the



company and Joseph Tierney. ("Joe" of course has died only relatively recently, after a long career running his own firm — J V Tierney & Co).

In those days the working week consisted of five and a half days (half-day Saturday) for the princely sum of £8 weekly.

Nineteen forty eight was an eventful year for Hugh as he moved to Matthew Hall (contractors) and was first placed in the IHVE Examination of that year. But, as Hugh tells it, there was another side to this success — he was also the last placed as he was in fact the *only* candidate. The IHVE was of course — for those of you who may not know — the name previously used by the CIBS prior to receiving their charter.

As a matter of interest, the examination in question was held in Bolton Street and was supervised by Noel Traynor and Freddie Pheasant. Talk about keeping it in the family!

*Not so much  
Another Side of. . .  
but more the  
same side of*

Indeed, at that time the IHVE was almost run from Haydens office and many of the well-known names in the IHVE/CIBS were introduced to that organisation while working for Haydens.

But getting back to Matthew Hall, Hugh was appointed Project Engineer and one of the first jobs that he worked on was Maynooth College. He knew the premises well having earlier surveyed the College in his time with Kennys. Now with Matthew Hall he was seeing

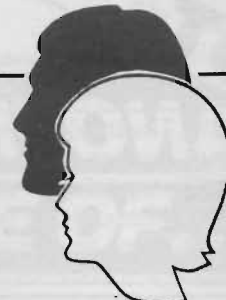
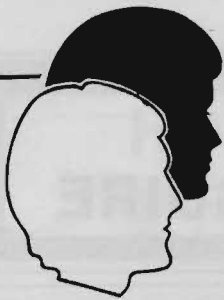
As Project Engineer he was responsible for every aspect of the job from beginning to end and this particular project was the centralisation of the heating system. The cost in those days was £120,000. Hugh talked about this project as if it were yesterday and indeed as a credit to this skill much of the installation remains today in perfect working order.

The installation, as a matter of interest, was to adapt an existing Perkins System using the distribution mains but cutting out the coils. It did not quite work out that way as it was discovered in the course of the job that the floors had dry rot and had to be removed leaving the pipework in-situ on the walls, a very odd sight with the three floors removed.

Nor was that the end of the story. When the new floors went in the pipes did not line up as they had followed the original levels of the old floor so, as you can guess, everything was ripped out and had to be started all over again.

Many other jobs followed including the Regional Hospital Galway and many other hospitals and sanatoriums as this was the era of rampant TB and Noel Browne, the then Minister for Health, was determined to stamp it out.

This was all in the 1950s and another big job for Hugh at that time was Store Street Bus Station. The architect was Michael Scott and the consulting engineers were Varmings of Denmark who linked up with Sean Mulcahy in Ireland for the project, thus founding the firm of consulting engineers we now know as VMRA.



# face to face

In the past few months the circulating pump market in Ireland has experienced fierce price competition, while at European level the effects of the recent acquisition by Wilo-Werk of a majority shareholding of SEH/Pompes Salmson, manufacturers of Euramo pumps, are the subject of much speculation. *Irish H&V*

News talked to Don Lauhoff, Michael Magner and Tom White — Managing Director, Director and Industrial Sales Manager respectively — of Euro Pumps Ltd, sole agents for Euramo in the Republic of Ireland.

As in practically every sales area in this country, reliable statistics on the market size for circulating pumps are hard, if not impossible, to come by, but as established market leaders Euro Pumps Ltd's estimates are as reliable a guide as any. From a market of about 25,000 units in 1976, when Euro Pumps first became Irish agents for Euramo, they estimate that it has grown to nearly 50,000 units today.

The main factor in this growth has been the widespread developments in solid fuel back-boiler systems in the domestic field, and more recently — in the Dublin area — the beginnings of natural gas central heating installations.

For the coming year, the already collapsed new housing market and the doubling of VAT from 5% to 10% in the recent Budget will hardly result in growth from this sector, and Euro Pumps consider they will do well to hold their level of domestic sales. In domestic pumps, replacement contracts are likely to become a significant factor, particularly as householders choose to replace the cheaper, lower quality pumps sometimes installed by house builders with more reliable brands.

Euro Pumps have never sold on price but rather on the quality of Euramo pumps, their after-sales service and the fact that they offer a complete range of domestic and industrial circulating pumps from 5 to 300 gallons/minute, as well as booster sets and pressurisation units.

In contrast to maintaining domestic sales, Euro Pumps aim to increase their market share of industrial pumps in 1985, and thus increase their overall sales which currently approach 30,000 units a year.

Since 1976, Euro Pumps Ltd. have been based at Laburnum Lawn in Cork, but last September a Dublin depot was opened at 115, Parnell Road, Dublin 8,



## Pumping the Market Place

(Tel: 01-770900), and Tom White appointed Industrial Sales Manager. Tom has an electrical background and was already familiar with the pump scene, and it will be his job to see that the planned for increase in industrial sales is achieved.

The Dublin location has already led to increased sales as extensive stocks are carried so that contractors can choose

almost any pump off the shelf.

The country is not divided up geographically between the Cork and Dublin offices: Tom covers the 26 counties in respect to industrial pumps and servicing and Cork-based Domestic Sales Manager Clem Cullen works similarly. Two vans are continually on the road with a complete range of pumps and spares and are thus

able to sell directly to the merchants and contractors that they visit at least once a month.

So what will be the effects of the acquisition at European level by Wilo-Werke of a 70% shareholding in Societe Electro-Hydraulic SA (SEH) of which Pompes Salmson, manufacturers of Euramo, are a part? Don Lauhoff, who acquired the total shareholding of Euro Pumps Ltd in July 1984, foresees that in time the tie-up will prove advantageous to both Wilo and Euramo as the results of combined research and development into products and manufacturing techniques bear fruit.

For the present, however, Euro Pumps/Euramo and Wilo will continue to operate completely independently in Ireland and remain in direct competition.

Aspects to this competition must inevitably include efforts to persuade more and more engineers to specify circulating pumps by brand name and the introduction of new products to meet changing demands.

Euramo have already responded to the growth in the replacement market with the introduction last year to Ireland of the Zoom series of pumps which have an adjustable flange length (from 130 to 370mm) and which thus enables them to be used as a replacement even for pumps which no longer appear on the market without having to change the pipework.

Although the recent Budget dealt a sharp body-blow to the entire construction industry, the reduction of VAT on pumps from 35% to 23% should be good for sales, as well as assisting cash flow. However, the fight for market shares in both domestic and industrial sectors is likely to become even sharper in the coming months. Whoever wins the battle will have earned the prize.

# ULSTER NEWS

## Bestobell Appoint Allanwood

Allanwood Boiler Services Ltd, one of the largest boiler and burner service companies in Ireland, have just been appointed agents by Bestobell Mobrey Boilerhouse Products.

"Service Assured" is the company motto and Allanwood guarantee that this promise is totally fulfilled in dealings with every customer.

The accumulated experience of the service team is unrivalled, enabling Allanwood to offer every customer a complete range of services. To back up this ability the company has extensively-equipped workshops including fully-equipped workrooms and a very large stockholding of boiler and burner spares and materials.

A team of fully-trained service engineers is on hand at all times to provide purpose-designed systems to cater for specific requirements; to provide planned maintenance on an annual service contract basis; and to provide a 24-hour breakdown service to all contracted customers.

## SELKIRK WIN £1¼ MILLION CONTRACT

Leading chimney manufacturer, Selkirk, has won a Northern Ireland Housing Executive contract for the supply fitting of 5" SC prefabricated, sectional chimney systems in 700 houses in Belfast's Grosvenor and Shankill redevelopment areas.

SC is a twin-wall product, with 65mm of mineral fibre insulation between its twin stainless steel walls to enable the smooth-faced inner liner to reach operating temperature quickly and to stay hot; so maximising draught and minimising condensation of tar, creosote and other waste products of combustion.

## LOW COST ENERGY

Over 150 representatives of senior management in industry and commerce attended the one day seminar, organised by the Northern Ireland section of the Institute of Energy and sponsored by the Energy Efficiency Office of the Department of Economic Development.

The Seminar was chaired jointly by Mr G Mason, Chairman of the Northern Ireland Section, and Mr John Lawrence, MBE, Managing Director of JEL Energy Conservation Service Ltd.

The theme chosen for the presentation was "Low Cost Energy" with particular emphasis on the financial savings to be had by the efficient use of energy.

The first paper was presented by Mr M Roberst of PA Management Consultants, who spoke on the subject of "Financial Return from Energy Savings". Following on were papers on "Financial Returns from Insulation" by Mr F Gallyer (Fibreglass Ltd), "Financial Return from Efficient Lighting" by Mr L Duncombe (Thorn EMI Lighting), "Financial Return from Boiler House Management" by Mr G White (AHS plc), and finally Mr John Lawrence of JEL presented a paper on "Financial Return from Energy Management Systems".

## Hutton Acquisition

RMC-Catherwood Ltd have announced that they have acquired the share capital of H Hutton Co Ltd, the Belfast builders merchants. Mr R M Craigan, Director and General Manager of Lowden & Partners also a member of the RMC Group, will be responsible for the operation of Huttons.

The Directors of Lowdens & Partners Ltd, the builders and plumbers merchants, played host to their customers old and new when they organised a trade exhibition of their products and activities in the Europa Hotel, Belfast.

## "WOODWARM" AND "INTEROVEN"

To satisfy demand at the smaller, or "domestic" end of the multiflued market, Brian Thompson Ltd has taken on the distributorship of "Woodwarm" and "Interoven" wood-burning and multifuel stoves for high efficiency heating and hot water.

These stoves are manufactured in England. They incorporate many new features, including the ability to change from wood to coal burning at the shift of a lever.

The stoves are available with heating/domestic hot water boilers, with outputs from 8,000 Btu/hr to 65,000 Btu/hr. And, coupled with their already existing range of boilers and air heaters the company now feel they can offer a multifuel heating system to suit just about any application from the home to the factory — including automated stoker systems for wood waste shavings, etc.

## CHANGES AT McDONALD

Consulting Engineers — Sir M McDonald Associates have announced that Mr Bill Williamson, Senior Partner of Williamson, Brown Crozier & Wyatt will become Managing Director of the new company which results as the result of the merger of the two practices.

Mr Williamson joins the present local Directors Philip Greenwood and Ernest Murphy on the Board of Sir M McDonald Associates who will now operate from two addresses, 15 Wellington Park and Fancum House, 108 Gt Victoria Street, Belfast.

All contracts entered into by the two practices before the merger will be honoured by them under their original trading names. Staff of both practices will join to form the new company.

# ULSTER NEWS

## NIIDHE Spring/Summer Programme

The NI Section of the Institute of Domestic Heating Engineers have announced their Spring/Summer Programme as below.

Further details are available from the Hon Secretary — David Bell at Belfast 57481.

### Winter/Summer Programme 1985

(1) Wednesday, 6 March

"The 15th Edition, Requirements for Domestic Heating Installations"

The Ivy Room, the Woodlands Hotel at 7.30 pm.

(2) Friday 29 March

"17th Annual Stag Dinner"

The Derriaghy Room, the Woodlands Hotel at 7.30 pm. Dress is formal and the tickets are £9.50 each.

(3) Thursday 11 April

"Golf Outing" IDHE/OBC

Cairndhu Golf Club, Larne. Tee-off is between 11.15 am and 12.15 pm. Refreshments and evening meal available. Contact Secretary for details.

Thursday 11 April

"Curling Outing" IDHE/OBC

North-West Castle Hotel, Stranraer. Depart 8 am Larne, return 7 pm Larne. Refreshments and evening meal available. Contact Billy McMichael for details at Drumbo 353.

(4) Wednesday 17 April

"Annual General Meeting"

Strangford Arms Hotel, Newtownards at 8 pm.

## D W Stothers & Co Ltd

D W Stothers & Co Ltd, mechanical and electrical contractor have announced the appointment of Mr George Weir as a Director of the company. Mr Weir joined the company three years ago after having extensive experience in the contracting industry.

## APPOINTMENT

Consulting engineers — Ferguson & McIlveen have appointed two new associates, Mr D Lightbody and Mr Larry Mason. Both men have been with the practice for some time.

## SEMINAR...

A seminar organised by AFA-Minerva Ltd was held in the Wellington Park Hotel. The seminar was designed to introduce to consulting engineers and such like users the benefits of "Building Management and Energy Control".

## APPOINTMENT

Potter Cowan Ltd have announced that Mr Herbie Wright has been appointed General Manager of the Pace & Selkirk chimney systems and Toshiba air conditioning division of the company.

Mr Wright was previously with S L Combustion Ltd.

## CHIMNEY COMPLEX

One of the largest chimney complexes in the British Isles, costing over a quarter of a million £IR was handed over recently at St James's Hospital, Dublin, by the installers Potter, Cowan (Ireland) Ltd.

The eight chimneys in the complex are used to vent solid fuel and turf burning boilers and are part of a new energy centre developed for the hospital complex. They are 45m high and 600mm in diameter and are supported on a structural rectangular hollow section tower. There is complete access to all areas and all fittings by ladder.

The chimney system was designed and manufactured by Pace Chimney Systems, a division of the Potter, Cowan Group, using Selkirk stainless steel section. The builders were McLaughlin & Harvey and the architects Maloney O'Beirne, Guy + Hutchinson, Locke & Monk.

## Water Treatment

Alanwood Boiler Services Ltd announce a further addition to the range of services offered to customers. For some time the company has been involved with Advanced Water Treatment Ltd, in the development and manufacture of water treatment chemicals and in the provision of both technical and plant services. Advanced Water Treatment's activities have now been merged with those of ABS and a separate division within ABS trading as Alanwood Water Treatment (AWT) has been formed.

AWT will operate from Gregg Street, Lisburn and will offer an unparalleled range of services to clients. The new company is staffed by fully qualified chemist/technicians who have many years of experience in the field of water treatment services.

Further details from Robert Moore and David Whiting, Alanwood Water Treatment, 14 Gregg Street, Lisburn, Co Antrim, BT27 5AW (Tel: 084625-815550).



• Brendan Bracken (centre) Director of Potter, Cowan (Ireland) Ltd, formally hands over the chimney to Gerry Doherty of McLaughlin & Harvey. Also at the handover was Potter, Cowan Group Managing Director, Burton Allen (left).

## New Products + Literature

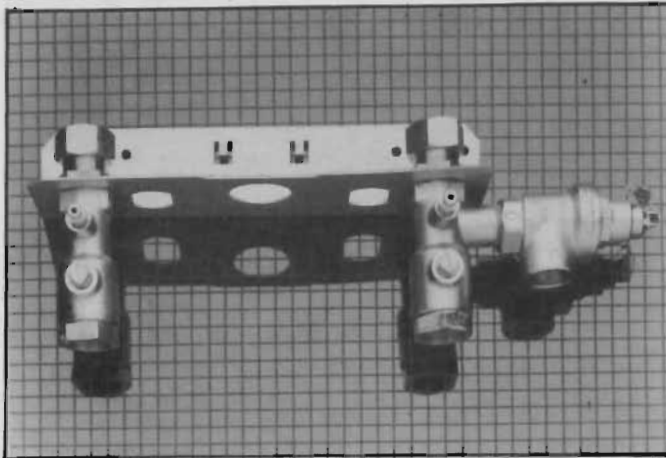
### VAILLANT ACCESSORY KIT

New from Vaillant is a new flow and return connection jig for the 'VC' range of boilers.

This is a one-part item (part no 9319) which takes the place of the four previously separate items (part nos 363, Flow Isolating Valve; 364, Return Isolating Valve; 9380, Pressure Release Valve; 379, Mounting Bracket).

The new one piece part is similar to the Combi Connection Jig (No 9313) which was introduced to replace the four components previously needed for that Series.

(Enquiry Code No 52).



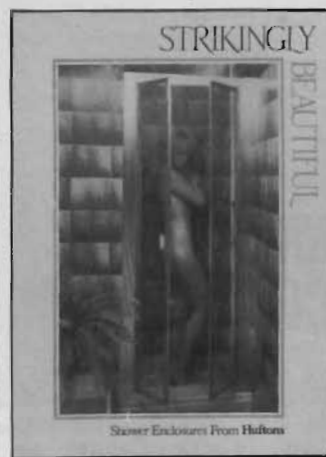
• New one-piece Connection Jig for Vaillant 'VC' range of boilers.

### SHOWER ENCLOSURES

A selection of quality shower enclosures are pictured in the latest colour brochure from Charles Hufton and Sons of Brierley Hill.

The full range comprises a selection of frame finishes, different types of door openings and a choice of patterns in either high density polystyrene or toughened glass.

(Enquiry Code No 42).



### OIL TIMER

Psimat (Ire) Ltd, Dublin 5, have recently been appointed exclusive distributors in both the UK and Ireland for the Mobil Oil Timer, a low-cost Swiss-made measuring device that can be interfaced with a wide range of static and mobile machinery.

The Timer incorporates 10 pre-set programmes, each with 10 planned intervals; flashing indicators warn when maintenance is due and a control key used to cancel the indicators when the servicing operation has been completed.

Two versions of this unique and versatile unit are available, one for static machinery, the other for mobile plant. As a result the Mobil Oil Timer can be used for production machinery, lathes, conveyers, presses, cutting equipment, packaging plant, bottling and canning equipment, etc.

Measuring only 180mm x 125mm x 39mm it is programmed simply by inserting a contact pin in the required intervals on a minimatrix board built into the unit; as a result complete servicing procedures can be planned in seconds. For static applications, the Mobil Oil Timer can be positioned adjacent to the machine it is monitoring or grouped with others at a central point.

(Enquiry Code No 53).

### FAST-FIT VENTILATOR

A new ventilator designed for rapid fitting into existing soffit boards has been added to the Glidevale range of ventilation equipment.

Called the "Spring Wing" ventilator (SV120), it is for use specifically when refurbishing existing dwellings as a means of ventilating the roof void to combat condensation.

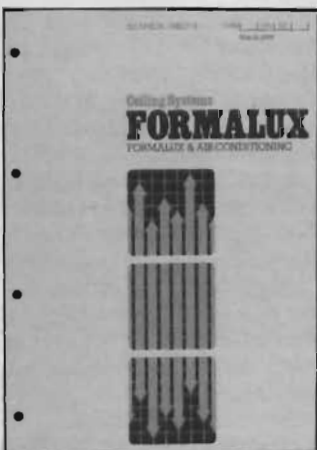
Measuring 280 mm x 115 mm, the rectangular vent is fitted at 1200 mm centres around the soffit board by cutting a rough-sawn hole into which the vent is simply snapped into place with the "spring-wings" of the vent. It can be installed in soffit boards from 5 mm to 20 mm thick and the secure, "snap-tight" action of the spring wings means that no future maintenance will be required in fixing vents which have



worked loose.

The new Glidevale vent is supplied with a template to enable quick positioning and swing of the hole. The wide lips on the vent hide any saw edges and provides a smart appearance.

(Enquiry Code No 51).



### FORMALUX

The latest in the series of technical sheets produced by Formalux Ceiling Systems gives guidance on the installation of the ceilings in conjunction with ducted air conditioning systems.

Technical Sheet 5 (CISfb (35) Xj7, March 1985) contains detailed instructions and diagrams on the integration of air conditioning with Formalux open cell ceilings, recommended components, design criteria and positioning requirements.

(Enquiry Code No 50).

### HAND TOOLS

A Levermore & Company Ltd have produced a new catalogue describing their unique range of hand tools and consumables for professionals and a new, informative data sheet on central heating design considerations.

(Enquiry Code No 46).



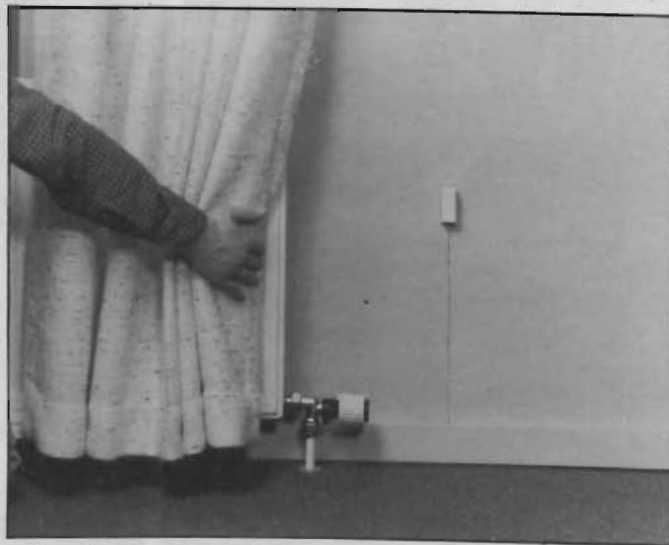
## New Products + Literature

### NEW FROM DANFOSS

The Heating and Ventilating Division of Danfoss have introduced the new thin capillary RAVL's remote sensor radiator thermostat, which enables easier installation and improves installation appearance.

Remote sensors should be used whenever there is a risk that a built-in sensor will be influenced by localised heating, or where the thermostat is located behind curtains and other obstructions to the movement of free air.

(Enquiry Code No 48).



• New Danfoss thin capillary Ravl 'S' remote sensor radiator thermostat.

### CONTROL OF RADIANT SYSTEMS

Powmatic has extended its range of control units for radiant heating systems with the introduction of a new series called Radtrol — A, B and C.

Radtrol A is the standard Black Bulb controller. The tamper-proof wall-mounting unit houses a sophisticated electronic control module, specifically designed for the control of radiant heating systems.

More advanced but fundamentally similar in design is Radtrol B, a high/low/off form of control specifically designed for use with the high/low Radiant Plague range.

If the features of Radtrol 'B' suit the individual application, but a built-in timeswitch is required, then Radtrol C is the answer. The timeswitch used is an advanced fully programmable electronic unit with battery back-up and digital display, thus making Radtrol C a fully self-contained control system.

(Enquiry Code No 49).

### MOBILE AIR CONDITIONER

HVAC's mobile air conditioner, called the Super Mini Cool SC600, features air cooled condensing which eliminates the need for frequently refilling the unit with water.

HVAC say that other features include, air filtering, two speed fan with the option of ventilation or cooling, oscillating supply air louvres to give supply air flow through 120 degrees, visible condensate indicator, and accessory discharge duct.

(Enquiry Code No 47).



• HVAC's super mini cool SC600.  
DOI: 10.21427/D76M6

### EUROFLOW FANS

New literature has been published on the Euroflow range centrifugal in-line duct fans.

The Euroflow fans are quiet, powerful and speed controllable — with a life expectancy of over 20 years in normal working conditions.

Two types are available — Model LDF and the twin version Model TDF — both of which arrive on-site as complete factory-built units and can be installed into ducting in minutes.

(Enquiry Code No 45).

### WATER TREATMENT CHEMICALS

Water-Process Plant Supply Limited has recently commenced the distribution of the VBV range of chemical products.

The main applications for these products come under four categories:

Steam boilers and accessories; water cooling systems/air-conditioning plants; cleaning and regeneration of ion-exchange resins; and reagents for water analysis.

(Enquiry Code No 43).

### AIR HANDLING

Roof Units has added two new larger sizes to the range of Viking Compact air handling units.

The launch of the two new units brings the total to six — all available from stock — covering duties ranging from 0.1 to 5.6 M<sup>3</sup> per second.

The standard Compact utilises double inlet forward curved fans. But a backward curved fan can be fitted if required.

(Enquiry Code No 41).

### COASTER HEATING

In order to comply with the Merchant Shipping Regulations, vessels must install an approved and adequate form of heating in crew accommodation.

Installing a heating system within the confines of a cabin or messroom requires careful planning. The Yorkshire Dry Dock Co Ltd, currently building a series of coasters for a number of clients, sought the particular expertise of Myson Domestic Products to provide radiators for their vessels.

(Enquiry Code No 44).

### ENERGY EFFICIENT CONTROLS

The Building Services Group of Danfoss have introduced an 8-page energy efficiency guide, entitled "Danfoss Energy Efficient Controls for Small Commercial Buildings".

The Guide explains, in detail, the co-relation room temperature control, time control, hot water temperature control, weather compensation and boiler sequence control. Suitable solutions using optimum start controls, hot water temperature controls, boiler sequence controls, electric zone valves, radiator thermostats and weather compensators, are then discussed.

(Enquiry Code No 40).22

# Chimney Failures

## — Yes There is a Problem

Now before you over-react to the heading on this article, think about it. It's unfortunate but nonetheless true. Incorrect and downright careless installations have been uncovered time and time again. . . and not all of them were by "cowboy" contractors.

That is not to say that all contractors are guilty. The vast majority endeavour to provide a competent and thoroughly professional service. Most succeed but there are also those who don't.

The fact that Liam Sands, Managing Director of Chimney Relining Services, now spends most of his working year re-doing installations that have been botched is proof of this.

The contracting sector — just like any other industry — is always going to be plagued by the cowboy element. Little or nothing can be done to eliminate this problem save educating the public to employ only those who they know to be bona fide installers and tradesmen.

However, another facet to the problem has been unearthed in recent months which the legitimate contractor can do something positive about. First and foremost though they must acknowledge a certain degree of responsibility for the issue.

Everyone within the trade can list the top dozen or so reputable contractors in Dublin for instance, but how often do the principals concerned —

upon whose reputation the company's good name is based — personally carry out or supervise each and every contract?

The answer is obviously not often at all, except of course with the very small firms. It would be impossible for any one person to oversee all jobs within any reasonably-sized company. Hence the need for fully-qualified and reliable craftsmen who can be relied upon to work to the highest possible standards.

And herein lies the root cause of many a problem which has come to light.

A typical example is a job recently finished by Liam Sands for a householder in Dublin's southside. Liam was called in when it was determined that ill-health being experienced by three members of the family was possibly being caused by fumes escaping through the chimney breast into the living room.

On investigation it was discovered that fumes were indeed escaping and that the entire central heating installation — which had only been put in two years ago — was quite disgraceful in terms of craftsmanship. It was also in a dangerous condition.

A typical "cowboy" installation? Not so. In fact, the householder had done everything according to the book prior to picking the contractor to do the work. He had consulted the country's foremost authority

on domestic heating in the first instance, who then gave him a list of reputable contractors in his area to choose from.

Top three on the list were arguably among the top ten contractors in the whole country. He opted for one of this three. Yet strangely, the net result was that the system had

Sands. Better to be safe than sorry.

Let's see that the term "reputable contractor" is not devalued. The cowboy element has done enough harm already without legitimate contractors compounding it through carelessness and negligence.



• T & G floorboards in the South Dublin house were simply hacked up.

to be re-done two years later.

If this can happen with one of the country's foremost contractors, then the contracting sector as a whole must recognise that there is a problem. This is but one instance of many cases that can be authenticated if necessary.

As for the case in question, there is no conceivable way that the principal of the company involved would have condoned the disgraceful workmanship. Even the simple matter of lifting the floorboards was so haphazard and destructive that the bathroom section had to be totally replaced.

This, according to substantiated reports, is not an uncommon occurrence.

So, whether you believe your employees would not be so careless or not — and especially if you use sub-contractors — maybe a pep talk wouldn't go astray.

Additionally, before you dismiss the following "basic chimney task" as elementary, read through it and see if you can be 100% sure that all your staff fully understand the basic principles as outlined by Liam

### Basic Chimney Talk

A chimney is a passage through which smoke and fumes escape. It works on the principal of hot gases being lighter in weight than the atmosphere. (Atmospheric pressure is 15 lbs per sq in). This creates a natural updraught and causes a comfortable flow of air into the room to keep the fire alight.

Air leaking into a flue cools the flue gases and reduces the draught; the warmer the draught. Every fire, particularly open fires, needs a sufficient continuous flow of air to keep the fire lighting. The air supply will be induced naturally through the floor boards and gaps around the doors and windows. Some rooms suffer from air starvation, having solid floors and well draught-proofed doors and windows. An insufficient air supply will cause the fire to smoke back into the room.

Large voids, rough surfaces and sharp bends create resistance to the flow of flue gases entering the chimney. These obstructions create a turbulence in the chimney and in



• Liam Sands and Sean Maguire, Chimney Relining Services.

Published by ARROW@TU Dublin, 1985



most cases smoke comes back into the room rather than enters the chimney.

Have you ever noticed on a damp wet day with just a whisper of wind, how slowly and sluggishly the fire will burn until the chimney heats sufficiently to create a updraught?

The same sluggish symptoms can occur with brick-lined chimneys. A brick-lined chimney is a chimney without flue liners. These chimneys never heat up and will continually cause a smoking back into the room due to climatic conditions. Fuels with a high hydrogen content, combined with sulphur compounds in the flue gases, form a weak acid which will attack and destroy the mortar joints in the brickwork and indeed the brick itself.

Moisture from damp fuels will condensate inside the chimney when flue gases are cooled below a certain temperature. This condensation will penetrate the brickwork and generally stain the plaster at high level in the ceiling and the attic. This moisture, together with other compounds, will dry and harden on the surface of the

chimney in a type of pitch-tar content and often result in a chimney fire.

Chimney fires, particularly in old houses with a brick-lined chimney, sometimes have ceiling joists and rafters which are built into the chimney stack. It can be the cause of a roof or the

entire house burning down. A chimney fire can have a burning temperature exceeding 1,000°C.

In recent years a large number of cookers, stoves and room heaters were installed throughout the country. Many of these appliances were con-

nected into existing chimneys without a test for suitability, safety or draught.

While all chimney problems can be solved (at a price!), many can be prevented from occurring in the first instance.

## Iso-Kaern Chimneys from Scandia

The Iso-Kaern chimney was invented 35 years ago in Denmark, a country where chimney sweeping is compulsory by law. Being made of pumice, (volcanic lava), the chimney is able to withstand almost any temperature that can occur in a chimney. It also offers an extremely high degree of insulation, which results in virtually no condensates and the



• The Iso-Kaern range of pumice outer casings and liners, available ex-stock from Scandia Flues.

minimum of soot and tar in the chimney.

Iso-Kaern is the only company to have been able to perfect the mix of pumice, cement and additives, thereby producing a chimney which is able to withstand repeated chimney fires and heat shocks. The chimney has been repeatedly tested up to 1,200°C for 30 minutes at a time without any detrimental affects.

The chimney consists of square outer casings, which come in three sizes and a range of liners — 22 different sizes, plus an insulator which is poured in situ between the liner and the outer casing. The components are extremely lightweight and can easily be cut, drilled and shaped to suit. Its method of construction makes a chimney completely safe and virtually foolproof to build.

The Iso-Kaern chimney has a minimum life expectancy of 60 years and is fully guaranteed for 10 years. This covers both new chimneys and the relining of old chimneys.

Iso-Kaern has been established in Britain as the quality chimney for five years through importer Keddy Ltd, and supplies and accessories are now available ex stock from Scandia Flues, 1a Fane Street, Belfast BT9 7BW, (Tel: Belfast 664401).

(See Advertisement for Enquiry Code No).

## Morris Experts for 20 Years

MJ Morris & Co Ltd have been involved in boiler and furnace refractories for close on 20 years. They have acquired the expertise for dealing with all types of linings, ie firebrick, plastic mouldable, castables pre-cast shapes, ceramics etc.

They have a skilled crew of refractory erectors which enables them to carry out installations nationwide through all sectors of industry, bakeries, chemical plants, creameries, hospitals and mining.

They also manufacture and erect incinerators for all industrial waste.

Being members of the Institute of Refractories Engineers, they have access to the latest developments in refractories and can apply these new techniques in everyday operation.

Details from M J Morris & Co, Wharton Hall, Harolds Cross, Dublin 6, (Tel: 972168) or after hours 980464 — 045-64384.

(See Advertisement for Enquiry Code No).

See us on Stand 6B — Institute of Housing Forum Hotel, 23 - 25 April '85

## DON'T SMOKE OR CATCH FIRE!

Here's 3 Names to Remember

### ISO-KAERN

Lightweight thermally efficient pumice chimney and lining system. Easily erected and resulting in a safe long life chimney.

### Rook-Top

Fan operated smoke extractor and ventilator clears your room from smoke and guarantees constant air change.



# SCANDIA

FLUES & FIRES N.I. LTD.

1A Fane Street, Belfast BT9 7BW

Tel: Jimmie or Kathleen Hynds at 664214

Telex: 747661 G

https://www.industrydocuments.ucsf.edu/docs/bsn1v0241334  
DOI: 10.21427/D76M6

# 1100°C

The word from inside is...

## NO PROBLEM!

with the

## PARKAFLUE CHIMNEY

The tried and tested chimney with the proven track record. Developed over fifteen years with continual refinement and improvement.

The chimney which has proven itself again and again.

Incorporating a unique dense refractory concrete liner which strengthens at high temperature to form a ceramic bond.

A superb socketted and spigotted jointing system designed to run any condensates down the chimney.

A high quality patented insulation system which ensures the chimney is insulated continuously for its entire height thus eliminating hot spots.

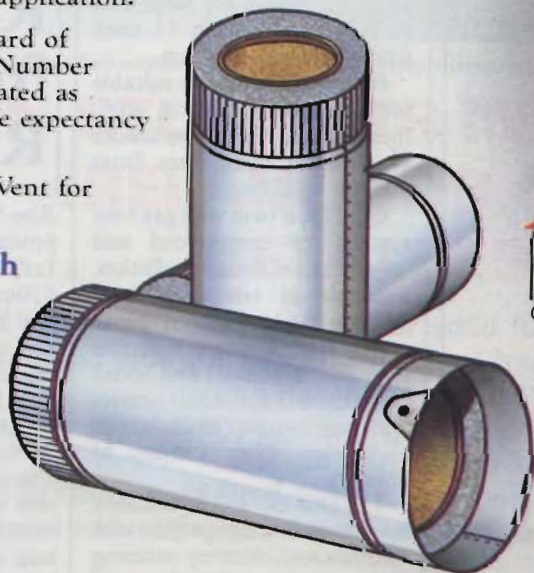
Galvanised steel or stainless steel outer casing for internal or external application.

The Parkaflue chimney is compatible with all modern heating appliances—gas, oil, solid fuel and wood and is particularly suitable for open fire application.

Carrying British Board of Agrément Certificate Number 84/1259 Parkaflue is rated as having a minimum life expectancy of sixty years.

Guaranteed by Rite-Vent for ten years.

Use Parkaflue with confidence . . . the solid fuel chimney with the proven track record.



# RITE-VENT PARK DIVISION

HEAD OFFICE: ARMSTRONG ESTATE, WASHINGTON TYNE & WEAR ENGLAND NE37 1LH  
TEL. 091 416 1150 TELEX 537080

Published by ARROW@TU Dublin, 1985

Enquiry Code No. 11

*Chimneys Designed first to last*

## Potter Cowan for "Pace"

Potter Cowan (Irl) Ltd, have recently handed over their "Pace" chimney system at the St James's Hospital Energy Centre to McLaughlin & Harvey, the main contractor for this complex.

The system comprises two central, open, frame-supporting masts 45 metres high, each supporting four 24" ID prefabricated insulated sectional chimneys as manufactured by Messrs Selkirk Ltd. The "Pace" system provides easy access to the complete chimney system for inspection, maintenance or partial replacement if necessary. The support masts are designed by structural engineers to ensure full compliance with the relevant standards and is finish painted

to a high standard providing a long life before first maintenance.

All the prefabricated sectional chimneys are as manufactured by Selkirk Ltd — and are constructed from stainless steel inner and outer skins with 3" of high quality mineral wool insulation between skins. This construction being of low thermal mass and with a high insulation factor ensures the rapid stabilisation of the flue gas temperature within the chimney and the development of maximum draught which enables the boilers to attain maximum efficiency thus saving the cost of expensive fuel.

The St James's chimney complex is one of the largest of its type in Europe and services six boilers and two incinerators. The boilers are turf-fired and when they come on line a considerable fuel cost saving is expected. Brendan Bracken of Potter Cowan Ltd is particularly pleased that this project was designed and fabricated here in Ireland using Irish workers in the face of some stiff opposition for the

order from both at home and abroad.

(See Advertisement for Enquiry Code No).

## Hevac for Quality and Value

During this current recession Hevac Ltd have found that top quality products will increase rather than decrease sales. When money is in short supply, hard pressed consumers will shop around and insist on the best value available. Selkirk Metalbestos prefabricated flues have proved over the last few years that they are definitely the best value around. The fact that sales of Selkirk have significantly increased last year speaks for itself.

Selkirk manufacture a wide range of prefabricated flues for every conceivable application and stocks are readily available through merchant outlets on a country wide basis.

SM flue is a twin wall stainless steel chimney for all flue types, available in seven sizes from 125mm to 350mm.

ST flue, a triple walled insulated stainless steel lined chimney system for large fuel plant, is available in 11 sizes from 250mm to 914mm.

IL flue, a twin system suitable for domestic and small commercial gas fired appliances available in three sizes from 102mm to 152mm.

QC flue, a twin wall gas vent system for commercial and industrial gas fired installation, available in ten sizes from 178mm to 610mm.

SW flue, a single wall flue pipe for domestic and small commercial gas fired air heaters and appliances, available in eight sizes from 125mm to 350mm.

The new SC safety chimney is an advanced design twin-wall stainless steel chimney encasing high grade mineral wool insulation.

Designed to give protection against the risk of chimney overheat, the SC chimney ensures rapid temperature rise and reduces the risk of condensation and the build up of tar and creosote deposits — the

major factors leading to chimney fires and corrosion within the chimney.

SC is suitable for external and internal installation and all fuel, particularly solid fuel, and woodburning appliances which are liable to user abuse. Should chimney overheat occur the SC's construction ensures that it will stand the resultant high temperatures.

The chimney is tested up to 540°C under continuous firing, 760°C under short firing and 1150°C for repeated chimney overheat conditions of short duration. It is available in five diameters from 125mm to 250mm to suit most domestic and small commercial boilers, room heaters and stoves.

It has a structural support system which employ's common components across the range of sizes to keep specification, supply and erection as simple as possible.

Every Selkirk Metalbestos chimney system has a complete range of accessories and fixings for rapid assembly, and where relevant all chimneys comply with British Standard and current building regulations and are approved by the British Gas Corporation.

(See Advertisement for Enquiry Code No).

## Expert Range from Rite-Vent

Rite-Vent flue and chimney products (Irish agents C&F Ltd) range from 75mm to 610mm diameter, with flexible and rigid systems for gas, oil and solid fuel, suitable for both internal and external application. For domestic gas application, there is the Twinwall Metal 'B' Vent, kitemarked to BS715. The system is suitable for both new housing development and refurbishment programmes and when combined with the Instaduct Chimneybreast, manufactured under exclusive licence from British GAs, the householder can be supplied with a convenient means of installing a gas fire into a home without a chimney.

(See Advertisement for Enquiry Code No).

## Ceramic Lining Limited

4A DUNGANNON ROAD, COALISLAND, CO. TYRONE

TEL: COALISLAND 40899

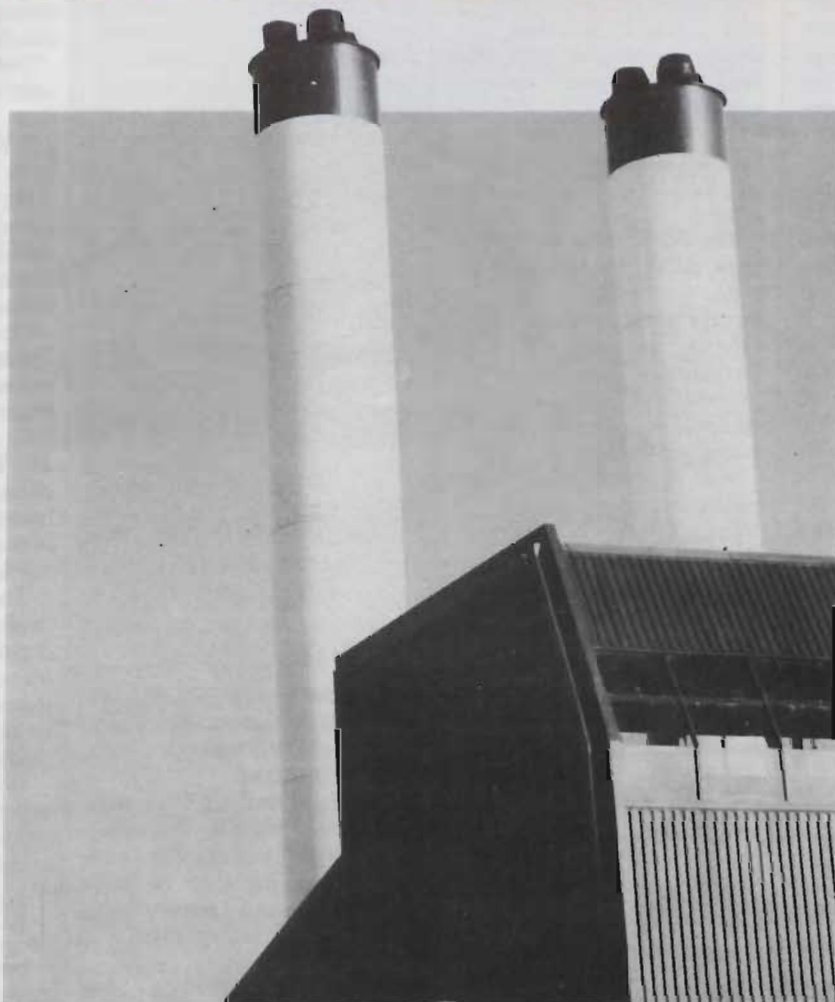
Installer of

THERMOFLUE  
ULTRAD FLUE —

PREFABRICATED CHIMNEYS  
AND ALSO ULTRAD FLUE  
LINING SYSTEMS FOR RELINING

Work done North and South  
DOI: 10.21427/D76M6

# PREFABRICATED CHIMNEYS FROM HEVAC



Selkirk Metalbestos installed within windshields at Beaumont Hospital, Dublin and supplied and installed by HEVAC LTD.

## MAIN STOCKISTS IN REPUBLIC OF IRELAND FOR SELKIRK METALBESTOS

- Twin wall stainless insulated flue for solid fuel appliances. Range 5" - 14" I.D.
- Single wall stainless flue for gas and oil fired heaters, warm air blowers and gas fired ceiling heaters. Range 5" - 14" I.D.
  - S.T. chimney system for venting gas, oil or solid fuel plant — industrial and commercial. Range 16" - 36".
- Q.C. gas vent system, twin-wall galvanised steel and aluminium vents for commercial and industrial gas fired installations. Range 7" - 24" I.D.

Extensive stocks held at our Dublin and Cork warehouses.



HEVAC LIMITED, LISTER COMPLEX, BALLYMOUNT ROAD, CLONDALKIN, CO. DUBLIN.

TELEPHONE: 519411. TELEX: 30324 TUB EI

TIVOLI INDUSTRIAL ESTATE, CORK. TEL: (021) 500166 TELEX: 28408

Where an existing chimney needs to be lined for Class II application, Flexrite flexible flue liner is available, fully approved by the Gas Corporation.

Two styles are available, either Double Lock Economy Liner or the Triple Lock DeLuxe liner. Diameters range from 76mm to 406mm and the product is available only in the 316 approved grade of steel.

Domestic solid fuel application — For solid fuel application Rite-Vent now offer an unrivalled range of insulated chimneys and chimney liners. The ICID stainless steel insulated chimney system is Kitemarked to BS4543 in diameters 120mm to 203mm with the range extending to 300mm.

The Chimflex SF flexible liner for solid fuel application is guaranteed by Rite-Vent for ten years against corrosion by the products of combustion. The addition of the Park range of refractory concrete lined chimney systems completes the domestic range.

Parkafloe is a pre-fabricated insulated chimney, consisting

of a dense refractory concrete liner, surrounded by moulded mineral fibre insulation the whole contained in a cylindrical outer casing of stainless steel.

The Parkafloe chimney can withstand low temperatures acid abuse and high temperature 1,100°C burn-out conditions associated with open fires and some enclosed appliances.

The Agreement Certificate for Parkafloe states the lining will have a life of at least 60 years.

The Parkastack refractory-lined, pre-cast lightweight concrete block chimney incorporates the same dense refractory concrete liner as Parkafloe. The blocks are manufactured to dimensions compatible with standard building blocks.

For commercial gas atmospheric applications, Rite-Vent offers Maxflow in diameters 152mm to 610mm. It is manufactured with a stucco embossed aluminium outer casing and an aluminium liner.

The twinwall construction is designed to ensure rapid flue priming to give a strong

draught at the boiler ignition and minimise the formation of harmful condensation.

Specials can be designed and manufactured to suit almost any layout.

For Class I application, insulate Chimney ICIC is available in diameters 250mm to 610mm. This product is manufactured with triple skin construction, having an



• The new Glidevale Spring Wing Soffite ventilator.

aluminium outer casing, a stainless steel inner liner and a galvanised steel inner case with 76mm insulation.

A single wall stainless steel chimney system is also available for gas or oil application in diameters 75mm to 500mm. Where required twinwall sections can be incorporated for insulation purposes.

(See Advertisement for Enquiry Code No).

## BUILDING CHIMNEYS IS A SERIOUS MATTER. . .

... says Rite-Vent's Paul Gordon

Often neglected and rarely understood, chimneys are an integral part of all solid fuel

heating installations. Despite the wide range of chimneys on the market and the many thousands of words that have already been written on the subject, chimneys still account for the majority of problems and complaints made about performance of solid fuel appliances.

The 1984 *Which Report* on solid fuel appliances claimed that "27 people died during 1982 from fumes produced by solid fuel appliances, blocked flues, chimneys or pipes". Clearly, therefore, the design, installation and maintenance of chimney systems is a very serious matter.

No modern solid fuel appliance will give satisfaction unless the chimney is properly selected and correctly fixed.

In seeking to assess the size and suitability of the "correct chimney system", it may be best to first consider the purpose and function of the chimney itself.

The purpose of a chimney is twofold; To carry away the products of combustion into the atmosphere; and in doing so the creating of draught or pull to draw combustion air into the fire.

In assessing the correct chimney to use, one ought to distinguish between chimney systems for new housing development and add-on chimneys for refurbishment programmes.

As important as the selection of the correct chimney or liner, it is vital that the chimney is regularly inspected and swept. Rite-Vent normally recommend that the chimney is swept twice a year at least. With wood burning, it may be necessary to sweep the chimney once a month.

It is not recommended that a chimney fire be started to burn off existing soot and tar deposits. Chimney fires are reportable offences and must always be regarded as extremely dangerous. If a chimney fire does occur, professional advice should always be sought regarding the condition of the chimney.

The following is a brief summary of the more obvious do's and don't's on the use of chimneys on solid fuel appliances.

Always select and size a chimney based on the knowledge of the appliance, the fuel to be used, the layout of the chimneys or flues (ie is it inter-

## M. J. Morris & Co. Ltd.

Furnace Builders

Boiler Repair Specialists

Oven Builders

Suppliers of Refractories and Allied Products

Fabricators and Erectors of Incinerators

Industrial Furnace Erectors

Refractory Erectors to N.E.I.  
International Combustion Cochran Ltd.

For information contact:—

M. J. Morris & Co. Ltd.

Wharton Hall, Harolds Cross, Dublin 6.

Tel. 972168/13 lines After Hours 980464.

https://www.industrydocuments.ucsf.edu/docs/4444

DOI: 10.21427/D76M6

26 IHVN, April 1985

Enquiry Code No. 14

nal or external, number of elbows involved) and any other special requirements of the appliance or locality and exposure of the site where the installation is to take place;

Always try to avoid the use of bends wherever possible;

Always consult appliance manufacturers and chimney manufacturers literature;

Always refer to the appropriate Codes of Practice and British Standard (CP131 and BS4543 respectively);

Always refer to Building Regulations and Local Authority requirements;

Always advise the householder the correct method of maintenance and regularity of sweeping.

Never use a Class II or liner on a Class I appliance;

Never instal a system without full reference to all necessary National and Local Regulations.



• Installation of Parkaflue and Parkachest.

## 100 Years Experience

Ulster Fireclays Ltd have been manufacturing clay products in County Tyrone for over a 100 years. The wide experience gained over these years, backed with modern plant, enables them to manufacture these products to the highest standard.

In recent years the company has specialised in the supply of products for use in the construction of chimneys in new buildings and the relining of existing chimneys in housing where improvements are taking place.

In this market the range of products manufactured has been widened to include lightweight, insulated pre-cast chimney units; clay lined insulation steel chimneys; and a full range of chimney terminals.

The company also manufactures fireplaces suitable for open and closed fire appliances.

(See Advertisement for Enquiry Code No).



## 'PACE' Chimney Systems

AS INSTALLED AT ST. JAMES'S HOSPITAL

FREE STANDING — BUILDING SUPPORTED

FULL DESIGN, SUPPLY & ERECTION  
SERVICES AVAILABLE FROM

 **Potter Cowan & Co. (Group) Ltd.**

Potter Cowan (Ireland) Ltd.  
58 Castlevue Road, Clondalkin, Dublin.  
Telephone 513533

Also at  
18/20 Duncrue Crescent, Belfast BT3 9DW  
Tel: 775511 Telex: 747549

All systems installed using pre-fabricated chimney components.  
Manufactured by Selkirk Ltd.,  
Banstead, Surrey.



## MONODRAUGHT LAUNCH



• *Monodraught Flues, Jurys: Pat O'Donovan, Monodraught Flues Ltd, with Peter Byrne, Chairman of The Energy Conservation and Distribution Heating Association of Ireland and Terry Payne, Managing Director, Monodraught Flues.*



• *Monodraught Flues — Jurys: Paddy McLoughlin, HPCA, with Liam Sands, Chimney Relining Services and Pat O'Donovan and Terry Payne, Monodraught Flues.*



• *Paddy Delaney, FKM, Class 3 winner: John English, MD, Lister Tubes with M Curley, BTU Captain; P Delaney, FKM.*



• *E McGrattan, overall winner on back nine with 37 points: John English, MD, Lister Tubes with M Curley, BTU, Captain; Eamonn McGrattan, McGrattan & Kenny.*

## Reconair — Latest Addition

Reconair Filters Ltd, Newcastlewest, is the latest addition to the Reconair Group of companies, formed specifically to further strengthen Chairman Frederick Cooney's objective of import substitution wherever possible within the Group's needs.

Strategically sited at Newcastlewest Industrial Estate, Newcastlewest, Co Limerick, the factory is ideally positioned in an area where both its output and products are badly needed. It will also provide up to 12 jobs over the next two years, under the direct control of Managing Director Brian Scully.

The new factory consists of approximately 2,500 sq ft of works area and 400 sq ft of office accommodation. It has also been fully equipped with the latest "state of the art" technology for filter manufacturing.

Finally, and perhaps most important of all, an on-line computer link has been established with the Head Office computer facility in Dublin which will greatly enhance the capability of the

new operation.

Additionally, special customer requirements can also be catered for. Details are available from Brian Scully at 069-62966.

## LISTER TUBES GET SEASON UNDERWAY

Overall winner of the recent Lister Tubes sponsored BTU Outing at Rush Golf Club was Eamonn McGrattan, McGrattan & Kenny, with a score of 37 points on the back nine.

It was the first BTU outing of the year and was held in very blustery conditions which made life for the 60 plus participants fairly difficult. Nonetheless, scores returned were quite impressive given such adverse golfing weather.

Other winners on the day were Frank Cahill (Class 1); Eamonn Cullen (Class 2); and Paddy Delaney (Class 3).

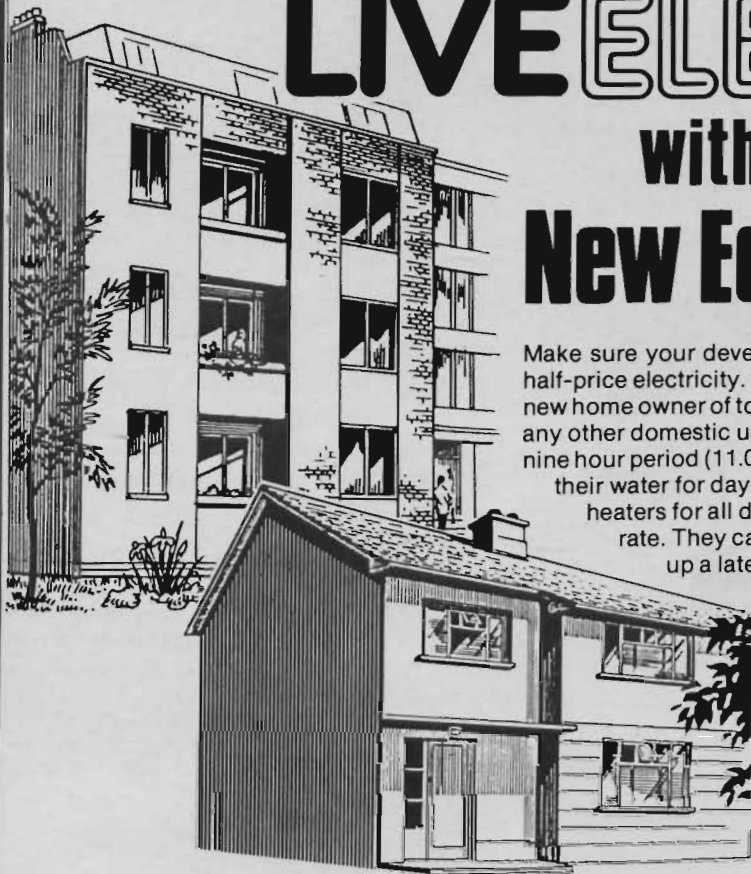


• *Eamon Cullen Class 2 winner: John English, MD, Lister Tubes with M Curley, BTU, Captain; E Cullen.*



• *Frank Cahill, Class 1 winner with 37 pts: John English, MD, Lister Tubes with M Curley, BTU, Captain; Frank Cahill.*

# Design and Build to **LIVE ELECTRIC** with the **New Economy Rate**



Make sure your development has the built-in benefits of less than half-price electricity. That's what the new economy rate offers the new home owner of today - electricity for heating, water heating and any other domestic use at less than half the normal rate. For a full nine hour period (11.00 p.m. to 8.00 a.m. G.M.T.) customers can heat their water for day-time use and heat-up slimline storage heaters for all day warmth - all at the new low-cost economy rate. They can switch on plug-in heaters, watch tv or cook up a late night snack; if it's after 11 p.m. it's all at the cheaper rate. Next morning, they can heat up the bathroom and kitchen and cook breakfast up to 8.00 a.m., again at the new money-saving economy rate. And there are other savings too. It all adds up to a new concept in electric living and a better buy for today's home seekers. So, before deciding which space and water heating systems best suit your development, fill in the coupon below for the full facts on the **NEW ECONOMY RATE**.

## Why you should plan to **HEAT ELECTRIC**

- Low installation cost.
- Competitive running costs.
- No fuel storage space or troublesome boilerhouse.
- Wide choice of heaters, including slimline style.
- No extra supply costs for schemes.
- Better terms for cooker wiring and immersion group installation.
- Fully automatic system with individual room control.

I would like a representative to call and discuss the advantages of the **ECONOMY RATE** for new houses/apartments I am planning to build.

NAME \_\_\_\_\_

ADDRESS \_\_\_\_\_

TELEPHONE NO. (for appointment) \_\_\_\_\_

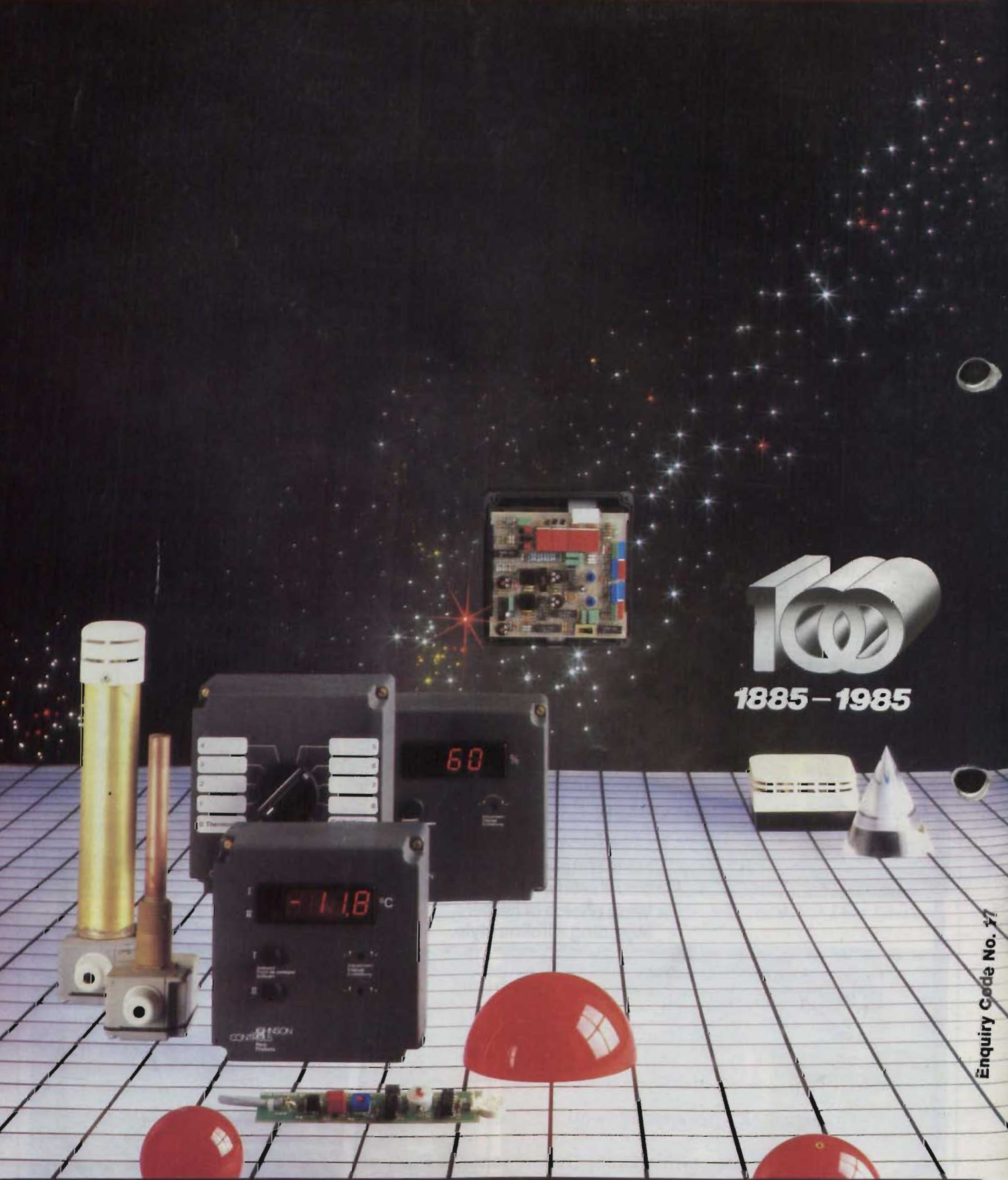
All replies to: **Marketing Department, E.S.B.,  
Lower Fitzwilliam Street, Dublin 2.**





# A NEW DIMENSION IN TEMPERATURE/HUMIDITY CONTROL

Building Services News, Vol. 24, Iss. 4 [1985], Art. 1



100  
1885 - 1985

Enquiry Code No. 47

**JOHNSON  
CONTROLS**

**MANOTHERM LTD.**

4 Walsby Road, Dublin 12.  
Tel. (01) 522355, 522218, 522229.

10 Incecracken Park, Belfast BT6 0SL.  
Tel. 645966.

**Penn  
Products**