


3-1-1996

## BS News

Follow this and additional works at: <https://arrow.tudublin.ie/bsn>

 Part of the [Civil Engineering Commons](#), [Construction Engineering Commons](#), and the [Construction Engineering and Management Commons](#)

### Recommended Citation

(1996) "BS News," *Building Services News*: Vol. 35: Iss. 3, Article 1.

doi:10.21427/D7PX2G

Available at: <https://arrow.tudublin.ie/bsn/vol35/iss3/1>

This Article is brought to you for free and open access by the Journals at ARROW@TU Dublin. It has been accepted for inclusion in Building Services News by an authorized administrator of ARROW@TU Dublin. For more information, please contact [yvonne.desmond@tudublin.ie](mailto:yvonne.desmond@tudublin.ie), [arrow.admin@tudublin.ie](mailto:arrow.admin@tudublin.ie), [brian.widdis@tudublin.ie](mailto:brian.widdis@tudublin.ie).



This work is licensed under a [Creative Commons Attribution-NonCommercial-Share Alike 3.0 License](#)

# BSNews

March 1996

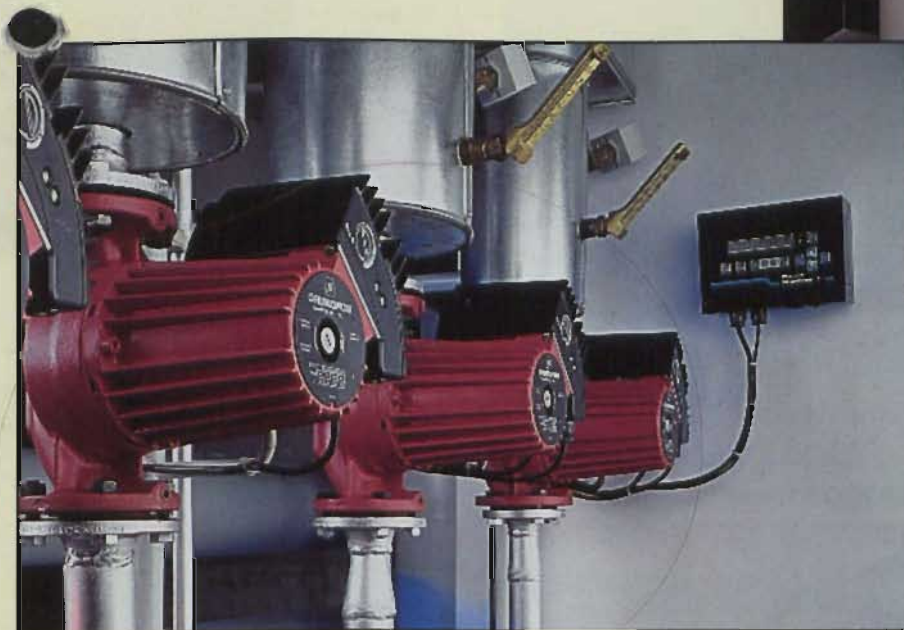
IRISH BUILDING SERVICES NEWS



Left: IDHE Technical Evening sponsored by JJ Sampson & Son.



RIGHT: The Flair shower experience – see “Bathrooms” inside.



LEFT: Grundfos Series UPE – “The world’s most complete range of electronically-controlled pumps”.

# THE NEW MYSON TRV II

IT'S SET TO  
TURN THE HEAT  
ON THE  
COMPETITION.



Meet the only valve to beat the Myson TRV. The new high efficiency Myson TRV II. Setting new standards in thermostatic radiator valve systems. Giving your customers the benefits of the latest energy saving technology. And helping to achieve better SAP ratings in new homes.

The styling is slim, elegant and very, very practical. The non-rising head reduces dust traps and gives a smooth operating action, made all the easier by ergonomically-designed sculpted fingerholds and clear setting marks. And the notched economy position



## TRV II

THE NEW HIGH EFFICIENCY TRV FROM

# MYSON

(set at 20°C) gives warning when the valve is turned to higher temperatures.

The reversible body can be fitted on the flow or return radiator tapping, and a fully-closed position on the valve means the radiator can be safely removed if necessary.

The Myson TRV II can also be locked at one setting or limited to a specific range of temperatures. It's available in polished chrome or satin brass finishes, in a full range of sizes and with a comprehensive range of accessories.

POTTERTON MYSON (IRELAND), BELGARD ROAD, TALLAGHT, DUBLIN 24. TEL: 01 - 459 0870; FAX: 01 - 459 0880

# Building Services News\*

ISSN 0791-0878

Published by:  
Pressline Ltd.  
5-7 Main Street,  
Blackrock, Co Dublin.  
Tel: 01-288 5001/2/3  
Fax: 01-2886966

**Editor:** Pat Lehane  
**Advertisement Manager:** Joe Warren  
**Telephone Sales:** Ita Moore  
**Administration:** Edel Burke

**Origination and Design:**  
Pressline Ltd. Tel: 01 - 288 5001

**Subscription:** One Year — £27

**Printed by:** Kilkenny People.

© All editorial contents and all advertisements prepared by the publishers, Pressline Ltd.

\* Incorporating Irish Heating & Ventilating News.

## Readership Data

Irish Building Services News (formerly Irish H&V News) is Ireland's only Building Services magazine providing coverage of heating, ventilating, air conditioning, refrigeration, sanitaryware, plumbing, maintenance and environmental industries. It is the only publication catering exclusively for these industries and its circulation includes members of the following:-

- Chartered Institution of Building Services Engineers (CIBSE);
- The Mechanical Engineering & Building Services Contractors' Association (MEBSCA);
- The Association of Consulting Engineers of Ireland (ACEI);
- The Mechanical Engineering Contractors' Association;
- The Institute of Domestic Heating Engineers (IDHE);
- The Registered Heating Contractors Association;
- The Maintenance, Energy & Environmental Technology Association (MEETA) which incorporates energy managers and maintenance managers;
- The Energy Conservation & District Heating Association;
- The Institute of Plumbing;
- The Irish Home Builders Association (IHBA);
- Builders Merchants/Trade Supply Outlets.

In addition, Irish Building Services News circulates to independent building services contractors and key executives in industry, Government, Semi-State and local authority bodies. Essentially, our circulation is virtually saturation coverage of all those with an interest and/or involvement in the industry.

# Contents

## PAGE 2

### NEWS

Woodleigh Returns!; Electrowatt Concludes Purchase of Landis & Gyr; Dublin Bay Sewage Clean Up; New Appointments at Sanbra Fyffe; De Longhi 'Factory Fresh'; Wavin Appointment; Industry Strategic Review; IDHE on Quality and Heating Controls; Fernox Setting Standards; Mitsubishi Electric Dealer of the Year; ASHRAE and CIBSE Move Closer; Construct '96; BGE 250 kWh Club!; Ireland Unaffected by Barlo Group Redundancies; Midland Bank chooses JetSpray In-Duct Nozzles; Wilo Re-Organisation; Lundy IIEE Chairman; Creda TSR Supaslim Combi;

## PAGE 12

### RC CONDIZIONATORI & GT PHELAN

Combining Quality and Reliability

## PAGE 13

### WILO PROFILE

Wilo Takes On Edge of Steel.

## PAGE 14

### BATHROOMS

Myson Towel Warmers – Quality Craftsmanship with Aesthetic Appeal; Excelsia – A New Collection Mixing Modern and Traditional Styles; Myson's Kickspace – Perfect Bathroom Heating; Flair Capella Shower Enclosures; Trevi Showers – Precise Control, Safety & Innovative Styling.

## PAGE 21

### CIBSE NEWS

CIBSE AGM Notice; CIBSE Student Awards; Airfield Lighting.



**CIBSE Student Awards – Vincent Mahony, Walker Air, with Oliver Reddy, CIBSE Chairman (ROI); Adrian Cooke, Walker Air; Barry Coffey; Alec Moir, President CIBSE; Jim Curley; Andrew Ramsay, Secretary, CIBSE; and Ken Beattie, DIT, Bolton Street.**

## PAGE 22

### IRISH ENERGY CENTRE

EU Funding for Energy Efficiency in Compressed Air; Boiler Efficiency – Commercial & Public Sectors; Diary Dates.

## PAGE 24

### NEW PRODUCTS

Alnor – Ventilation & Environmental Control Measurement; Vectaire – CB/CK Fans for Internal Rooms; Kane-May Combustion Analyser.

## TRADE NEWS

### Woodleigh Returns!

Dave Kohlbeck of Woodleigh has announced the company's full return to the HVAC stockist market. For the last two years Woodleigh has concentrated its efforts on developing its energy monitoring and targeting software, and data loggers. It has had considerable success with Stark energy monitoring and targeting software, installations to date including Pfizer Pharmaceuticals, Nestle Rowntree, Quinnsworth and Sola ADC lenses.

However, throughout that time Dave has been keeping a close

eye on the HVAC market and has decided that now is an ideal time to re-launch the Electro Controls range. For the last two years there has been no real "independent" source based in Ireland looking after the Electro range of products.

"Woodleigh's re-entry full-time into this market will change that for the better", says Dave.

"Over the last 12 months especially", he says, "I have been approached on numerous occasions to supply the same service as we did when Woodleigh first began trading nearly six years ago. So here it is. In the last two years Electro Controls have considerably enhanced their range of products, all of which carry the CE mark and are backed by Electro's quality manufacturing. Those include branded Joventa actuators, seat valves, step controllers, etc. In all there are something like 750 products in the range.

"Another change is the prices! They've come down in many cases! Woodleigh market the range using Electro Controls' price lists and literature. For 1996 many prices have been reduced to reflect the competitive nature of the marketplace, both here and in the UK. We carry a large stock as always but, together with our new shippers, we can offer Dublin-based customers the option of collecting their goods late evening on the day they are ordered, even if they are shipped from the UK (subject to conditions)".

Woodleigh is also a stockist for the Belimo range. Dave was a founding director of Belimo Automation (UK) Ltd and has an in-depth knowledge of the entire portfolio. New actuator additions to the collection include a mini-actuator and a

### Dublin Bay Sewage Clean Up

A number of exhibitions and information centres opened to the public in Dublin earlier this month to get people's views on Dublin Corporation's plans to upgrade the level of sewage treatment in Dublin and improve the quality of water in Dublin Bay.

The City Engineer, Jim Fenwick, says that it is essential to hear what Dubliners think of the plans so that issues raised by groups and individuals can be incorporated into the plan, during this consultative phase of the project.

Between now and the end of the year 2000, Dublin Corporation will:-

Upgrade the existing wastewater treatment plant at Ringsend to meet EU and Dublin Bay Water Quality Standards;

Build a new pumping station at Sutton;

Lay a submarine pipeline under the bay to bring the wastewater from the north Dublin pumping station to Ringsend for treatment.

new valve actuator range.

"So there it is ... the service and technical support as it should be and as it used to be, better prices, great delivery;

what are you waiting for? ... get the new price list and buy your ancillary controls from a truly independent HVAC controls stockist", concludes Dave.

### Electrowatt Concludes Purchase of Landis & Gyr

Electrowatt, the parent company of Staefa Control System, has now successfully concluded the purchase of Landis & Gyr. Electrowatt owns 99.65% of the Landis & Gyr capital and has received approval of the European and USA anti-trust authorities.

The acquisition became effective on 20 February 1996 when top-level discussions commenced to plan the amalgamation of Staefa Control system and Landis & Gyr, under the Electrowatt umbrella. Joint working parties of staff will undertake the task of planning and implementing the numerous aspects of this integration process as quickly and smoothly as possible.

Contact: Michael Murphy, ABB. Tel: 01 - 405 7300.

<https://arrow.tudublin.ie/bsn/vol35/iss3/1>

DOI: 10.21427/D7PX2G  
2 BSNews, March 1996

### New Appointments at Sanbra Fyffe

Sanbra Fyffe Ltd, Ireland's leading manufacturer of brass compression and underground fittings, has appointed Liam P Donnelly (Chairman) and Malcom W Taylor to the board as non-executive directors.

The expansion of the board - which presently includes Liam Dean, Managing Director, Michael Sherran, John Darcy and Fred Jackson - is part of the company's growth plans which will see it develop its export sales achievements while maintaining its position as market leader in Ireland.

Thomas Rooney, CPA MMII has joined Sanbra Fyffe Ltd as Marketing Manager. He will be responsible for marketing, external communications and export sales activities. He brings extensive marketing and export sales experience to his new position and will lead Sanbra Fyffe's expansion in Europe.

Contact: Liam Dean.  
Tel: 01 - 842 6255.



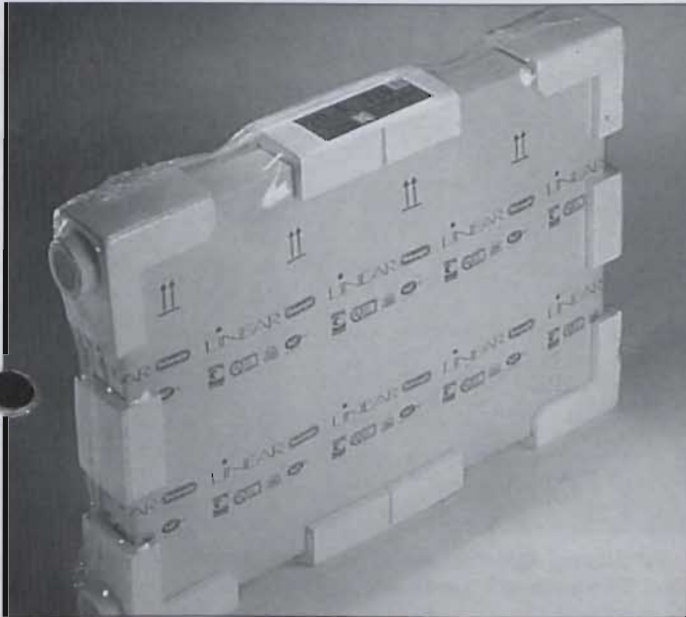
Thomas Rooney who has joined Sanbra Fyffe as Marketing Manager

## TRADE NEWS

### De Longhi 'Factory Fresh'

De Longhi has launched a "factory fresh" packaging concept for its Ultimate and

Linear range of convector radiators. Research into the radiator



De Longhi radiator packaging

market has shown that surface damage can be a major area of customer dissatisfaction.

Products leaving the factory in perfect condition can arrive on site chipped, damaged or otherwise imperfect, creating problems for the installer and delaying completion dates.

To help tackle this problem every Ultimate and Linear radiator is fitted with purpose-made polystyrene ends which are now extended to protect the convector fins and wall brackets against damage.

The radiator is then encased in a protective cardboard outer before being shrink-wrapped with heavy-duty Polythene to improve scuff resistance and keep the radiator clean and dust free. The finished product is easier to handle and can be stacked for trouble-free storage.

### Appointment



Patrick Moore has been appointed Engineering Manager at Wavin. Immediately prior to joining Wavin he was Engineering Manager at Gernard Ltd, Carrickmacross, Co Monaghan (manufacturers of pvc flooring) and prior to that he held a number of other senior engineering positions, including Project Engineer with Guinness Ireland.

He graduated from University College, Dublin with a degree in mechanical engineering and is a chartered engineer with the Institution of Engineers in Ireland.

# JS Steam Humidifiers

**JS Defensor Mk4**

**JS ElectroVap 2**

Resistive or Electrode humidifiers, choose from the widest range!

- Outputs from 0.5 to 90 kg per hour
- On/Off and proportional control
- 15 models to choose from
- Easy cleaning features
- Hygienic, safe and reliable operation
- Process control to  $\pm 1\%$  available
- From JS. The UK's No 1 Humidifier Co



**NOBODY KNOWS HUMIDIFICATION BETTER**

#### JS Humidifiers

Rustington Trading Estate, Artex Avenue,  
Rustington, West Sussex, BN16 3LN, UK.  
Tel 0044 1903 850 200 Fax 0044 1903 850 345  
email: js@js-humidifiers.compulink.co.uk  
web: <http://www.compulink.co.uk/~js-humidifiers/>

## TRADE NEWS

# Industry Statagic Review

The Minister for the Environment, Mr Brendan Howlin, TD, recently addressed the inaugural meeting of the Committee which he has appointed to carry out the Strategic Review of the Irish construction industry. In announcing the membership of the Committee, which is chaired by Tony Barry, Chairman of Cement Roadstone Holdings, he detailed how it is broadly representative of a wide range of interests in the construction business. These include the Construction Industry Federation (CIF); the Institution

House, the Minister highlighted the importance of the construction industry to the economic and social life of the country. "The output of the industry at £4,500 million, represents almost one-eighth of our national income", he said. "The industry employs, directly and indirectly, about 115,000 people, or almost one in eleven people now at work". Mr Howlin said that the reasons for undertaking a strategic review of the industry at this time could be summed up in three words – change, efficiency and competitiveness.



The Minister for the Environment, Mr Brendan Howlin, TD, recently addressed the inaugural meeting of the Committee which he appointed to carry out a statagic review of the Irish construction industry. Pictured at the meeting are: Minister Brendan Howlin, TD and Tony Barry, Chairman of Cement Roadstone Holdings.

of Engineers of Ireland (IEI); the Royal Institute of the Architects of Ireland (RIAI); the Society of Chartered Surveyors (SCS); the Building Materials Federation (BMF-IBEC); The Irish Congress of Trade Unions (ICTU); private property developers and managers; and Government Departments and local authorities.

Speaking to the Committee at the inaugural meeting in the Chamber of Deputies, the Minister said that the construction industry is a key sector of the economy. He said that the industry's output represents almost one-eighth of the national income and that it employs about 115,000 people. He said that the industry is a key sector of the economy and that it is important to ensure that it is competitive and efficient. He said that the industry is a key sector of the economy and that it is important to ensure that it is competitive and efficient.



John Duignan, IDHE PRO, pictured with Dave Sampson, J J Sampson & Son; Dave Harris; and Barry Kenna, IDHE Chairman

## IDHE on Quality and Heating Controls

The IDHE held another of its highly-topical technical evenings in the Engineers Club in Clyde Road on Tuesday, 6 March. The evening was sponsored by J J Sampson & Son with two excellent papers being presented.

Liam O'hAlmhain gave a very enlightening talk on the

relevance of ISO 9002 to the domestic heating contractor. Because of the size of the companies involved – and the cost of bringing companies up to ISO standard – Liam suggested a "Cluster Approach" where a group of say four or five companies would receive training together in common sessions, to be supplemented with a limited number of individual sessions as well. Details, if required, from Liam O'hAlmhain.

Tel: 01 - 492 4391.

Dave Sampson of J J Sampson & Son gave an excellent talk on Danfoss heating controls, with particular emphasis on controlling heating costs in the home by using the new range of valves and thermostats from Danfoss.

Both papers were very well received by the attendance who availed of the opportunity to question the speakers and to develop the points raised further in the less formal get-together which followed the presentations.

## Fernox Setting Standards

The entire Fernox operation has now been accredited with BSEN ISO 9001, making it the only water treatment company in the UK to have this quality approval for domestic and industrial water treatments.

Fernox is at the forefront of the water treatment industry, producing a wide range of domestic, commercial and industrial water treatment products.

With over 70 years experience, Fernox has developed an extensive understanding of the problems water can give rise to. Indeed, the manufacturing plant at Ashford has recently gained Ford Q1 supplier status, one of the most difficult quality awards to obtain in the world.

Contact: Declan Kissane, Hevac. Tel: 01 - 830 1211

# *the slimmest the best*

Creda have again introduced the best products first with the fabulous New TSR Supaslim Combi designed with the Irish market in mind. Combination Heaters are an extremely efficient way of providing economic storage heating with the flexibility of instant response direct heat. The Supaslim's "Warmflow" fan system is more responsive, more controllable and more accurately maintains room temperature.



*TSR Supaslim Combi is the slimmest combination heater available. No deeper than a standard TSR, more than an inch slimmer than its nearest rival*



*The all New Supaslim Combi is a unique product which has a host of benefits and advantages that put it ahead of the competition.*

***But don't take our word.***

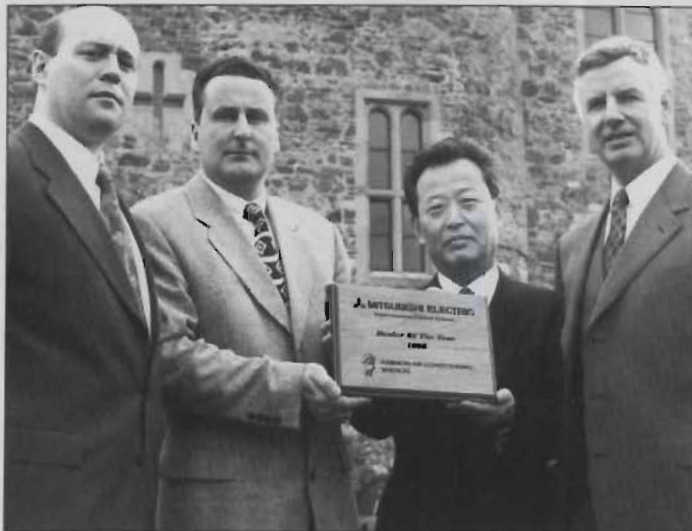
**Contact:-  
Des Bradley at EDI. Tel: 01 - 626 4366**

# **Creda**



## TRADE NEWS

### DEALER OF THE YEAR



John Harmon of Harmon Air Conditioning Services was appointed "Dealer of the Year 1995" at the recent Mitsubishi Electric Environmental Control Systems conference in Kilkea Castle. Pictured left to right are: Michael Sheehan, Sales Manager, ECS, Mitsubishi Electric Ireland; John Harmon, Managing Director, Harmon Air Conditioning Services; Takeo Ueoka, Head of Mitsubishi Air Conditioning Products in Europe; and Fergus Madigan, Managing Director, Mitsubishi Electric Ireland.



Mitsubishi Electric Ireland held its Environmental Control Systems conference recently in Kilkea Castle, Co Kildare. The theme of the conference was "Business 2000" as Mitsubishi Electric outlined its sales and marketing plans right up to the year 2000. Mitsubishi Electric launched air conditioning products in Europe 10 years ago and has since become a major player in this dynamic market. Picture shows Mitsubishi Electric's ECS dealers at Kilkea Castle for the conference

### ASHRAE and CIBSE Move Closer

Dr David Arnold, President of Cibse 1994/95, was elected a member of the governing board of the American Society of Heating, Refrigerating and Air-Conditioning Engineers (ASHRAE) at a recent meeting of the American society.

Dr Arnold will serve three years as 'Director at Large' on the Ashrae Board of Directors from July 1996. He follows Cibse fellows Seamus Homan, John Hames, and Richard Rooley, but is the first President to serve in this capacity.

Ashrae is a technical society that helps HVAC and refrigeration engineers maintain the standard of their work and keep current with technical developments in their field. Its voluntary standards encourage the adoption of new efficiency measures and allow the public to evaluate industry practice.

Ashrae administers numerous research projects that include practical energy-saving techniques that engineers can use immediately. Its conference proceedings and handbooks are full of basic and advanced design and application information on HVAC and refrigeration technologies.

### BGE 250 kWh Club!

As we went to press Bord Gáis announced details of a major promotion to the building trade which is based on its recently-announced three-year sponsorship of the October Bank Holiday Race Meeting at Leopardstown Race Course.

BGE 250kWh Club members, consisting of developers and builders, will participate in a monthly sweep/league, get an invitation to the *grand finale*

event at Leopardstown on 28 October, and get the chance to win a trip for two to the Melbourne Cup next November. The latter is an exceptional prize, taking in a full week in Australia, travelling and staying first-class all the way thanks to Bord Gais.

Paul O'Shaughnessy, Head of Marketing, Bord Gáis commented: "The new housing market has been very well disposed to natural gas over the last number of years and this is our way of recognising that support and hopefully creating some enticement in the industry".

### Ireland Unaffected By Barlo Group Redundancies

The 180 redundancies — out of a total of 1200 employees — announced by Barlo Group recently will not entail any job losses in Ireland. The job-cutting exercise is part of a major re-structuring of the Group which is wide-ranging and cuts across virtually all the Group's businesses, with the exception of its Irish operations.

According to Chief Executive Dr Tony Mullins, the measures now being implemented are aimed at improving product competitiveness and controlling costs in both the radiator and plastics operations in the UK and Belgium.

### Construct '96

Construct '96 is claimed to be the largest construction-related exhibition to be held in Ireland during 1996. It is officially supported by The Construction Employers Federation; The Royal Society of Ulster Architects; The Institute of Building Control; The Institute of Safety and Health; The Construction Industry Training Board; The Local Enterprise Development Unit.

It will feature up to 250 exhibitors, plus a 3-day programme of seminars; a jobs training fair; meet the buyer sessions; and a major export marketing initiative.

Dates: 26/28 November; Venue: The King's Hall, Belfast.

## Midland Bank Chooses JetSpray In-Duct Nozzles

JS JetSpray atomising in-duct nozzles have been used to replace the washer-type humidifiers at Midland Bank plc, 3 Lower Thames Street, London. Steam humidifiers were considered, but lower running costs compared with steam systems, lower maintenance and higher standards of water purity influenced Midland Bank's final decision.

JetSpray atomising nozzles, mounted on a manifold, deliver water and compressed air. The fine aerosol mist with a droplet size of just 7.5µm, dissipates rapidly into the air stream. Each nozzle has a self-cleaning action

become contaminated, the Bank opted to treat all water used by the humidifiers. Over 99% of organic material such as bacteria and virus are removed by RO and the ultra-violet kills off up to 99% of micro-organisms.

### Three zones

The humidification project covers 180,000 sq ft at the Midland Bank in three zones. Two air compressors and two water treatment plants are installed on the top floor near the three air handling units. The perimeter zone is equipped with a JS4000M controlling two 3.6 metre JetSpray manifolds with



JS JetSpray in-duct nozzles provide safe humidification for 180,000 sq ft at Midland Bank. An engineer checks out the new humidification manifolds in an existing AHU.

to remove any scale which might build up and the Midland Bank's own engineers installed the system themselves. The nozzle manifolds are custom-built to fit into original air handling units and existing equipment – including humidity sensors and cooling coils – are retained.

### Hygiene considerations

Midland Bank also specified JS PureFlo water treatment comprising reverse osmosis (RO) and ultra-violet sterilisation. Although JetSpray does not use reservoirs of water which might

44 nozzles each. The lift lobby is served by 20 nozzles and the inner zone AHU contains two 2.2 metre manifolds mounting 32 nozzles each. The cost per litre of atomised water is less than one third the price of the steam-produced equivalent. A constantly humidified environment of around 55% rH, ±2.5% is achieved.

Contact: General information: Mark Stafford.  
Tel: 0044 181 290 1703;  
Technical information: JS Humidifiers. Tel: 0044 1903 850200; Fax: 0044 1903 850345.

## Wilco Re-Organisation



As part of the re-organisation at Wilco Engineering which was completed over the last 12 months (see page 13). Maria Ambrose (right) is responsible for administration in the busy sales office while Liam Cantillon (left) is the senior workshop technician.

## Lundy IIEE Chairman

Chris Lundy has been re-elected Chairman of the Institute of the Incorporated and Executive Engineers for a further year, having served in an honorary capacity for several years on its executive committee.

Mr Lundy is a director of Apex Fire Protection, which employs over 80 personnel and provides a countrywide design, supply, installation and technical service, plus full after-sales-service throughout the 26 counties.

The Institute of Incorporated & Executive Engineers holds regular meetings embracing public education in the science of engineering, and in particular, engineering management.

## Maria O'Sullivan Says Thank You

"Following my recent request for funds to assist in the training of a severely autistic 5-year old, I send my heartfelt thanks to all – within the building services industry who have contributed so generously.

"Thanks to you, the child concerned will be able to attend the specialist Highashi School in

Boston for the next three years. "Fund-raising for causes such as this are very often difficult as people are constantly being asked to assist with some good cause or another. Nonetheless, on this occasion the building services industry responded magnificently and I thank you all once again on behalf of the child and his family."

*Yours sincerely,  
Maria O'Sullivan,  
Joe O'Sullivan,  
Plumbing, Heating & Sanitary Engineers,  
25 Bank Place,  
Tipperary.*

## RC GROUP water chillers



# R.C. Condizionatori – Quality & Reliability

More than 30 years of design and manufacturing experience, has led to the current range of fan coils, close control units, and liquid chillers, produced by R.C. Condizionatori, at their state of the art factories in Italy. These, high technology units, are the result of continuous research and development, and incorporate the most advanced, and reliable components available today.

R.C., in 1991, was the first Italian company in its market segment, to obtain European Company Quality System certification, to UNI-EN29001.



Cilli Axial  
Air Cooled Chiller  
6-15 KW



Cilli Centrifugal  
Air Cooled Chiller  
6-15 KW



Cilli Centrifugal  
Air Cooled Chiller  
13-30 KW



Cilli Axial  
Air Cooled Chiller  
13-30 KW



Unico  
Packaged Air Cooled Chillers  
25-1513 KW



Frigo Liquid Chillers  
with Water Cooled Condenser  
or Remote air Cooled Condenser  
or Water Cooled Full Heat Reclaim



Reverso  
Heat Pump Air Cooled Chillers  
23-615 KW



Maximo – Air Cooled Packaged  
Chillers with Free Cooling  
23-770 KW

**RC GROUP**

**G.T. Phelan Ltd.**

59 Rock Road,  
Blackrock,  
Co Dublin.  
Tel: 01 - 283 2622;

SOLE DISTRIBUTORS REPUBLIC OF IRELAND

## TRADE NEWS

### Creda TSR Supaslim Combi

Confirming Creda's reputation for bringing out the best products first is the new TSR Supaslim Combi.

Always in the forefront of innovation and new developments in the electric heating industry, Creda is the first manufacturer to bring a fanned combination storage heater to the market.

The Creda TSR Supaslim Combi is now a unique product which has a host of benefits and advantages that put it way ahead of the competition. A great deal of design effort has gone into its development and Creda is truly proud of this remarkable product", says Alex Kemp, Creda Range Manager for heating products.

"The TSR Combi is the slimmest combination heater on the market with a depth of only 167mm, more than an inch slimmer than

its nearest rival and no deeper than a standard TSR".

In effect, it is two independent heaters in one ultra-slim case. But instead of using a separate convector heater fixed to the front of the storage heater, the TSR Supaslim Combi uses a separate fan heater which is concealed in a plinth at the base of the heater. Creda calls this "Warmflow".

The "Warmflow" combi system is more responsive, more controllable and more accurately maintains room temperature than convected heat. Providing heat quickly and quietly, it is barely detectable above ambient room noise.

The convected heat is evenly distributed throughout the room space, avoiding heat stratification. The TSR Combi is ideal for providing a rapid boost of heat in very cold weather or as a sole heat source during cool inter-seasonal nights.

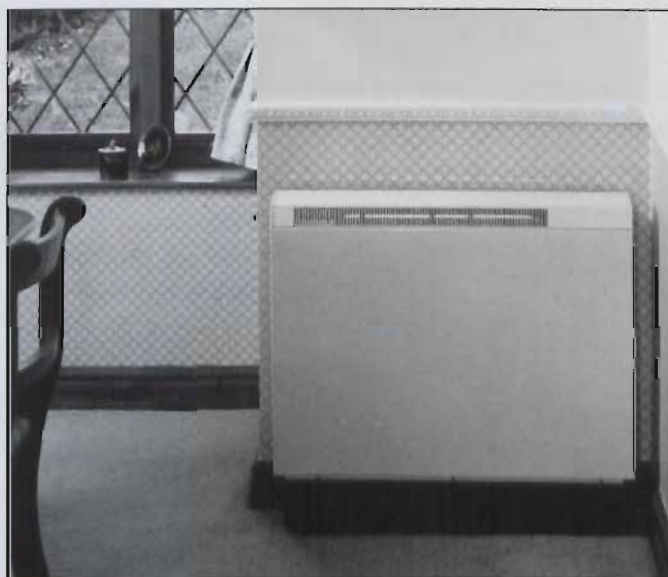
Because the "Warmflow" combi system has no gap for convection at the front of the heater, the

front panel gives out heat in the same way as a conventional storage heater. This additional radiant heat will make the room "feel" warmer than if the front panel were cool.

All the user controls are conveniently situated on the top of the heater, concealed beneath a controls cover. The entire system controls can be tamper-proofed by the addition of a simple kit.

The "Warmflow" fan heater is controlled separately by its own individual thermostat, which is accurate to +/-0.5C, offering fine control and economy. It is easy to set the combi elements to either full or half load on installation, making the product extremely versatile for a variety of applications.

Contact: For details of your nearest trade supplier contact EDI. Tel: 01 - 626 4366.



The new Creda TSR Supaslim Combi

## BSNews Business Advice Line

### Job Training Scheme (JTS)

The Job Training Scheme offers employers the opportunity to provide a training scheme within the work place, to train potential employees. The scheme provides full time training for between 13 and 52 weeks and is operated in association with FAS.

#### Conditions

- ◆ trainees have to be unemployed but need not have been signing the Live Register;
- ◆ employers must produce a current Tax Clearance Certificate;

◆ trainees must be employed on a full-time basis.

◆ a training programme, including directed training and workplace training, must be completed for each employee;

◆ employers are responsible for insuring trainees and need to hold adequate current liability insurance cover;

◆ training records must be available for inspection.

#### Allowance

Employers will pay a weekly training allowance to trainees and FAS will contribute 75% of FAS-approved training allowance rates.

### Requirements for Principal Contractors

If the accumulative total payment to an individual sub-contractor exceeds £30,000, prior written approval must be obtained from the Inspector of Taxes in the Construction Industrial Section, before any additional payment can be made.



## MILLIONS OF MOVIEGOERS ARE GLAD SHE DIDN'T KNOW ABOUT MITSUBISHI AIR CONDITIONING

So what's your excuse? Especially now you know that Mitsubishi Air-Conditioning can be tailored - at low cost - to your office, shop, hotel, pub or club.

How low - cost?

We'll be delighted to quote and

advise you free of charge and without obligation.

Mitsubishi Air-Conditioning creates not just the right climate for comfort but the right environment for improved productivity and profitability.

For more information, Talk to Harmon Air Conditioning Services, Unit 4, Longmile Business Park, Longmile Road, Dublin 12. Tel: 01 - 456 4233; Fax: 01 - 456 4836.



## HARMON AIR CONDITIONING SERVICES

**AIR CONDITIONING • HEATING • SALES, MAINTENANCE & SERVICE ENGINEERS**

<https://arrow.tudublin.ie/bsn/vol35/iss3/1>  
Unit 4, Longmile Business Park, Longmile Road, Dublin 12. Tel: 01 - 456 4233/456 4235; Fax: 01 - 456 4836.  
DOI: 10.21427/D7PX2G

## TRADE NEWS

### Irish Water & Environment Show Update

As opening day of Irish Water & Environment '96 moves closer, even more companies are signing up to be part of the exhibition at the Simmonscourt Pavilion of the RDS Dublin on Wednesday 24 and Thursday 25 April. Over 70 companies will be showing both new and existing product ranges.

Demonstrations of new technologies, and up-to-the-minute information of changes in EC legislation and regulations, will be available at the exhibition, offering a "one-stop" opportunity for visitors to keep abreast of changes in the water, waste and environment industries.

Irish Water & Environment '96 is one of the Irish Trade Board's major initiatives in 1996 to promote Ireland's competitive environmental expertise and technology to key industrial buyers. One of the Irish Trade Board's responsibilities is to promote Irish companies abroad, and to help them capitalise on the market niches created through changes in EC and national legislation. It will offer advice and information at the exhibition on all aspects of these exciting opportunities.

New for '96 will be a British Pavilion, organised through the Birmingham Chamber of Commerce & Industry, and

assisted by the Department of Trade & Industry. It will feature UK companies not seen at the exhibition before. There will of course be many other organisations both home-based and from the UK, exhibiting as in previous years.

SW Carthy & Son is showing its new and existing flowmeters, as is ABB who will be at the exhibition with its new water and waste Magmaster range. Product launches will include the new ABB ACS600 variable speed drive and Eurotherm Ireland's new drive ranges.

The latest development in technolog data loggers and support software will be demonstrated by Industrial Plant and, for those visitors interested in capital project tender notices, Tendering Services Ireland,

publishers of Tender Directory, will be giving advice and information on their stand.

#### Technical Programme

Organised by the ISA (Leinster Section), the technical programme comprises both seminars and training sessions. Highly topical, it will enable busy industry professionals to keep abreast of changes in the water and environmental sector, as well as to expand their knowledge on more specific topics.

The programme is priced at £95 per day or £170 for both days for ISA members; and £120 per day or £220 for non-ISA members (excluding VAT).

Anyone wishing to register for these seminars should contact Jean Roberts at the ISA on Tel: 01 - 284 0011.

Thermostats - Humidistats - Pressure Switches - Pressure Transducers - Temperature Transducers - Valves - Actuators - Humidity

**Woodleigh Limited**

*Controls at Winning Prices*



**Electro Controls Limited**

*Controls with Winning Ways*

## Back together again!

**Just in case you had not heard we're back together again. Or, as some of you already knew, we were never apart.**

*Call now for our current price list. We can give you great service, great prices and we are not - and never will be - your competition in other areas.*

***For catalogues and price lists contact:***

**Dave Kohlbeck at Woodleigh Ltd. Tel: 055 - 26384; Fax: 055 - 26523**

Data Loggers - M&T Software - Pneumatics - P/E transducers - E/P transducers - Smoke Detectors - Flow Switches - Frost protection

# Quality & Reliability from RC and GT Phelan

Since GT Phelan took responsibility for RC Condizionatori refrigeration equipment throughout Ireland, the partnership has focussed very directly on the provision of process cooling for computer rooms, telecommunications and other essential applications where quality and reliability are the essential ingredients.

With RC Condizionatori, GT Phelan is not interested in mass-market applications but rather specialist, one-off, customised projects. The technical excellence of the product range – coupled with the experience, technical expertise and industry knowledge

marketplace.

Where directly reproduceable situations are not possible, simulation studies are carried out by computer using modelling techniques. A particular aim pursued in research is the achievement of low noise levels particularly for products used in computer rooms, and of course, the range of liquid chillers. The range of products is vast, including close control units, from 7 to 90KW, operating on DX Air – DX water, and chilled water, and liquid chillers ranging in size from 6KW/2,700KW.

Many of the ideas conceived and developed by RC were original, and of such value that they have since been widely imitated. For example, the free cooling applied on packaged air cooled water chillers was first conceived by RC in 1979. This solution gives high energy savings in plants operating year round, and proved so beneficial that it was quickly copied by other manufacturers.

Another original concept of equal importance was to permit ongoing operation of the units, while servicing is being carried out. This was made possible by moving regulating devices, electrical panels and compressors to compartments separated from the air flow. Among the Italian manufacturers, another

innovation has been the adaptation of unit-mounted digital displays to indicate room air temperature and relative humidity.

The acceptance of RC products by leading major computer manufacturers fully validates the company's policies. Customers include major international end users, consulting engineers, banks, insurance companies and public sector organisations.

## QUALITY

RC quality standards are among the highest in the industry. All materials and components are of the finest quality, being sourced from only the most reliable and qualified suppliers. The production techniques used enhance both the quality and reliability of the products.

For example, the panelling of the cooling units is made from a special type of galvanised steel sheet, protected on its surface by an attractive hard-wearing PVC film, giving long maintenance-free life. The panels are insulated internally with high-density fibreglass material, which is then covered by washable glass-fibre sheet, edged and fixed by specially-developed plastic profiles, to ensure air tightness of the panels and freedom from dust and fibre migration.

The whole of the production process is subject to a wide-ranging quality assurance programme, which culminates in a final running test of each unit in accordance with the customers requirements.

## SIMPLE INSTALLATION

Special unique construction features allow very simple installation and maintenance, easy inspection and fast replacement of each component. A wide range of cooling capacities is covered, with an equally-expansive range of complementary accessories.

The microprocessor control system allows simple, precise and logical management of all components. This provides exceptionally reliable operation with excellent energy efficiency in both full-load and part-load conditions.

## NOISE REDUCTION

Outstanding results have been obtained by reducing the noise at the source, without the use of sound traps detrimental to system efficiency, durability and maintainability. Every single unit undergoes a series of operational tests to ensure perfect response to pre-selected performances. Every component is selected to conform to the main European Safety Directives.

## Principle products include:-

*Liquid Chillers* – From 6 - 2,700KW. Including free cooling and heat pump models;

*Close Control Units* – Air Conditioning units, including upflow and downflow models, all fully controlled by microprocessor;

*Fan Coil Units* – Full range available, including controls, valves, and all accessories;

*Roof Top Packages* – In cooling only, and heat pump versions, with optional roof kerbs, and return/exhaust air sections to provide free cooling.

**Details on the full RC range are available from GT Phelan Ltd.**

**Tel: 01 - 283 2622;**

**Fax: 01 - 288 3821.**



**Master Over – DX or chilled water close control upflow unit. Available in 12 sizes, from 10.5 – 79KW.**

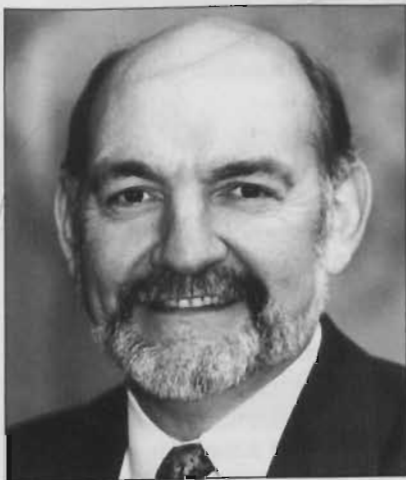
of GT Phelan personnel – makes for the perfect partnership to pursue of this objective.

RC Condizionatori is a major young company looking to the future. Two of its most important objectives are product quality and conformity with each country's standards. A third is the continuous requirement for technological innovation, balanced against optimisation of costs in order to always remain competitive.

Specific resources are allocated to applied research, including the testing of prototype units. These tests are carried out in a test area employing the latest technology, and

providing a wide range of working conditions to those found in our

# Wilco Takes On Edge of Steel!



Tony Cusack, Sales Manager, Wilo Engineering

In recent months Wilo Engineering has demonstrated an edge of steel — both practically and metaphorically speaking — which has sent reverberations throughout the Irish pump sector. It is clearly a declaration of confidence and intent which says that the company is secure in the knowledge that it has now got the product portfolio and supporting infrastructure in place to seriously challenge for market-leading status.

Not that market-leading status is the objective ... Wilo's ambition is simply to provide pumping perfection across the full spectrum of the entire building services industry.

Wilo's pedigree goes back to 1878 when the company's founder, Louis Oplander — the great-grandfather of the current Chairman — first established the business.

However, it was the patenting of the world's first heating circulator in 1929 that formed the basis of Wilo as it is now known.

Today Wilo stands as part of the giant, trans-national conglomerate called the Oplander Group. It incorporates a number of other international pump brands, in addition to a whole range of other business interests.

Wilo has had a presence in the Irish marketplace for many years, its Raheen-based production plant in Limerick — Wilo Pumps Ltd — having been set up in 1979. The contribution to the local economy is significant. Apart from the direct employment of 130 people, other services and supplies are also bought in locally while, in the national context, there are the export earnings it entails.

Wilo Engineering Ltd, the sales organisation for the Oplander Group in Ireland, is located at Childers Road, Limerick. It is a separate, stand-alone company, charged specifically with serving the needs of the Irish marketplace.

However, it has the added advantage of being able to tap into all the design, technical expertise and research data being part of such a large organisation involves.

Tony Cusack has been at the helm since it was first set up in 1980 and has been Sales Manager since the the company was completely re-structured a number of years ago. This reorganisation was a gradual process, involving a great deal of self-analysis and market research. Some unpalatable truths had to be faced head on, the result today being a very slim, tightly-run and thoroughly-professional organisation.

Key front-line members in the Wilo Engineering team are: —

services engineer who worked for some of Ireland's premier design consultancies over a 10-year period before taking responsibility for sales and client liaison in the Eastern Region;

□ Edward Fitzgerald, again a fully-qualified services engineer, who is based in the Limerick office and whose main responsibility is to act as internal sales support engineer;

□ Liam Cantillon, Senior Workshop Technician;

□ Maria Ambrose, responsible for administration in the busy sales office;

□ Dave Hathaway, accounts department;

□ John Connolly of Redlion Pumps, who looks after all commissioning, trouble-shooting, breakdowns and after-sales service calls in Leinster/Midlands;



Sales engineers Edward Fitzpatrick and Derek Elton

□ Jim Cusack who carries out a similar role to John Connolly for all areas encompassed within the Southern/Western Seaboard.

The management style and objectives are clearly-defined; there is strict operational structure; the extent and scope of the support services is second to none; and the product portfolio is now one of the most technologically-advanced available anywhere in the world. Included is a new range of stainless steel cold water pumps; a greatly-expanded mechanical seal range with design influences by Perfecta in Sweden; and a new collection of glandless commercial circulators, including advanced electronically-controlled models.

Completing the picture is an appointed network of principal distributors and wholesalers. Wilo Engineering has a strict policy of going through the trade, the function of its sales engineers being to provide the leads, maintain and strengthen ties at specifier and client level, and to provide all the technical advisory and design support that's necessary to ensure the smooth, trouble-free operation of the sales/supply infrastructure.

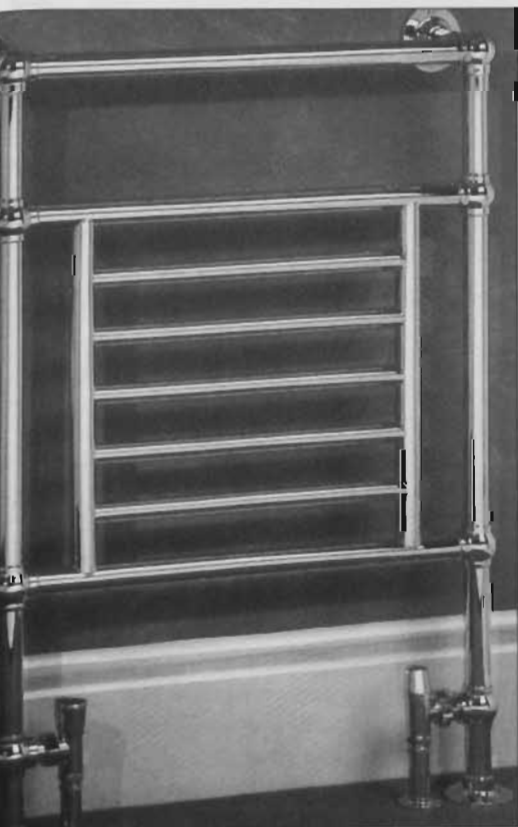
□ Derek Elton, a fully-qualified mechanical



## Myson Towel Warmers – Quality Craftsmanship with Aesthetic Appeal

Towel warmers should serve three primary functions — add to the comfort of a bathroom, keep towels warm and dry, and enhance the appearance of a bathroom. Some brands excel in one or other of the aforementioned attributes but very few can offer all three.

However, Myson towel warmers are the exception. They fulfil all these criteria. Elegant and stylish, the Myson towel warmer range is extensive with a wide range of standard units of different designs and a facility to have customised warmers produced to personal specifications.



*An elegant floor-standing model from the Myson Premier Towel Warmer collection*

These modifications include size, shape, colour, changes to tapping size and position, de-zinc-proof units and copper panel radiators.

Stringent quality control procedures are adhered to throughout all stages of production, from the initial sourcing of the

pressure-testing of each individual unit before it leaves the factory. Brief details of the extensive choice offered are as follows:—

**Rotondo & MRS Multirail Towel Warmers** — These wall-mounted units are available in stove-enamelled, epoxy-polyester, white gloss; any other bathroom colour; chrome plate; and 22-carat Regal or Traditional gold plate.

Manufactured in tubular steel for use on closed/indirect central heating systems, there are nine standard sizes with tailor-made units being to personal requirements.

Heat outputs are sufficient to warm the towels and heat the rooms.

Optional extras include electric heater for use outside heating season, an additional matching towel rail for extra hanging space and matching valves and sleeving kits.

**Classic Towel Warmers** — This collection comes in two variants ... wall-mounted and floor-standing.

They are manufactured from top-quality brass tube and are available in chrome plate, 22-carat Regal or Traditional gold plate, stove-enamelled, epoxy-polyester white gloss or any other bathroom suite colour. Once again there are standard sizes with a tailor-made facility. They are suitable for any central heating or hot water system with sealed electric versions also available. Optional extras include valves and sleeving kits and wall stays (for the floor-mounted units).

**Premier Towel Warmers** — This collection was specifically created for style and elegance, in addition to performance. It has all the benefits of the other collections but additionally offers a choice of dual finishes — chrome gold, white/gold, etc. Once again there are floor-mounted and wall-mounted versions.

**Radiator Towel Warmers** — These floor and wall-mounted models have a frame made from top-quality brass tube and incorporate a Myson round-top steel panel radiator in stove-enamelled, epoxy-polyester, white gloss.

They are available in chrome plate, 22-

carat Regal or Traditional gold plate, stove-enamelled, epoxy-polyester, white gloss and any other bathroom suite colour. Different colour radiator panels can also be specified.

They are suitable for closed/indirect central heating systems and offer maximum heating effect.

There is also a collection of standard electric towel warmers and Premier electric towel warmers.

A full range of complementary accessories completes the line-up.

Details from Potterton Myson (Ireland), Belgard Road, Tallaght, Dublin 24.  
Tel: 01 - 459 0870; Fax: 01 - 459 0880.

## Excelsia – A New Collection Mixing Modern and Traditional Styles

The introduction of the Excelsia brand from Armitage Shanks came about following the incorporation of its established modern and traditional styles of brassware into the one collection.

The range incorporates five different styles:—

□ **Amaranth** — A modern range of luxury taps and fittings with flowing curves and crisp, clean lines offering individuality and aesthetic appeal;

□ **Ravel** — High technology, single lever, complemented beautifully by delicate curves to provide a truly stunning design for your bathroom;

□ **Plateau** — Low profile, futuristic, luxurious Plateau, offers a unique range of fittings as individual as your taste;

□ **Jewel** — The classic 'swan-neck' design and flowing curves alongside the light-refracting handwheels gives a timeless fitting suitable for all modern, curved and classical styles;

□ **Handsacre** — A beautiful range of traditionally-designed fittings to add a touch of charm and authenticity to period suites.

Also introduced through part of the new collection are additional colour options.

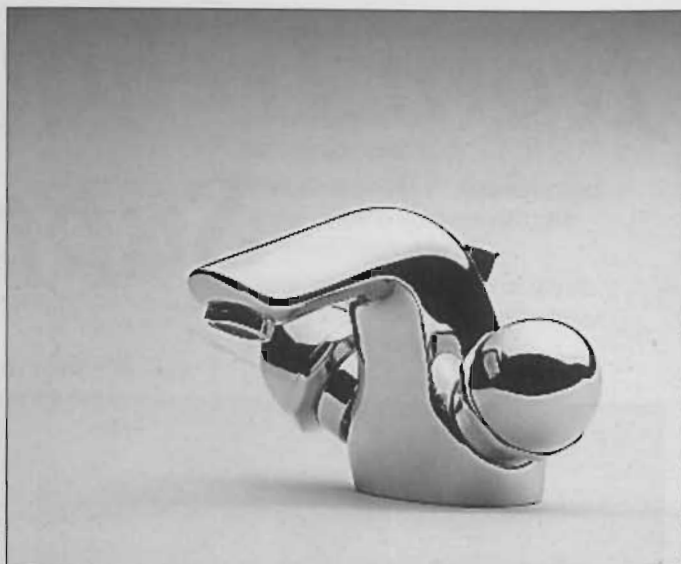
# *Beautiful Bathrooms from Ireland's Leading Suppliers*



*Armitage Shanks (Dublin) Ltd,  
Unit 1, Cookstown Industrial Estate  
Extension, Tallaght, Dublin 24.  
Tel: 01 - 451 0044; Fax: 01 - 452 6886*



Basin monobloc from Armitage Shanks' Ravel range



Basin monobloc from Armitage Shanks' Amaranth range

In keeping with its policy continually updating and expanding its range of bathroom products, Armitage Shanks has also launched a new luxurious back-to-wall suite called Cameo which takes the modern sleek lines of the Cameo suite and complements the range with a back-to-wall option. A new Birch finish in furniture has also been introduced,

adding another option to the ever-increasing furniture range.

An additional feature was introduced to the Cameo/Tiffany suites with the unveiling of the semi-pedestal, thus offering additional options to the already established wall-hung and pedestal basins.

A little known factor in the Armitage Shanks product profile is its shower cubicles. With the latest additions to this collection there are now three distinct ranges aimed at the different market segments. These are:-

- Rosini — Budget range;
- Chaira — New mid-range cubicles available in new colour finishes;
- Tribune — Established upper brand offering a complete profile of doors with the Pentagon unit proving increasingly popular.

Armitage Shanks has been to the forefront of this industry sector for 178 years and continues to set the standards and styles which invariably become industry norms. Honeymoon and Birch are the latest examples of this pioneering impact.

The introduction of Honeymoon and Birch has once more proved the runaway success of the Armitage Cottage suite. Although the Cottage suite has been on the market for a number of years and other manufacturers have launched similar style suites, the new Honeymoon/Birch option — with the high class Hathaway brassware — has taken the suite right back to the pinnacle of its early days.

Finally, the re-introduction of the Concept and Clarendon suites now gives Armitage the lift in the upper class suites that have been missing over the last number of years. With the full range now finally available and the constant introduction of new products, Armitage is once more offering its customers the

## Myson's Kickspace — Perfect Bathroom Heating

Myson's versatile Kickspace convectors provide the most powerful, economical and unobtrusive heating solutions for bathrooms and any other areas needing more usable space.

For bathrooms there's an inherently-safe, low-voltage version that tucks into the unused space beneath the bath or in the plinth space at the base of a vanity unit. Designed and manufactured to the latest European standards, it runs from a 12-volt supply, so it's safe to operate even with wet hands.

All models come with a choice of grille finishes to suit all bathroom styles.

Controlled from a separate wall switch or from a switch on the grille fascia, it costs less to run a Kickspace than a 40-watt lightbulb.

A range of all-electric Kickspace models, which run independently of the central heating system, is also available for kitchens.

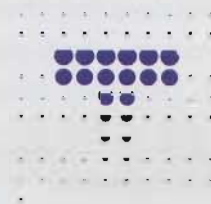
Finally, when Summer comes, all models have a fan only option to circulate a flow of cooling air.

Details from Potterton Myson (Ireland) Ltd, Belgard Road, Tallaght, Dublin 24. Tel: 01 - 459 0870; Fax: 01 - 459 0880.



Right: Kickspace convectors — powerful, economical and unobtrusive heating solutions for bathrooms from Potterton Myson.

# SLIM & COMPACT – WITH THE POWER TO SURPRISE



TREVI SHOWERS

AN IDEAL-STANDARD COMPANY

Every  
**TREVI**  
Shower  
has  
**POWER**



## BENEFITS

- ◆ Power on any level
- ◆ Precise Control
- ◆ Safety Assured
- ◆ Simple Operation
- ◆ Ideal for children/elderly



Trevi Jet



Trevi Therm

Sole Distributors throughout Ireland

**B.J. Caraher (Distributors) Ltd.**

WHOLESALE DISTRIBUTORS OF PLUMBING PRODUCTS

Dolphin House, 29 Belfast Road, Saintfield, Co Down. BT24 7EP.

Telephone: Saintfield 511071. Fax: Saintfield 510921

classic and elegant design in bathroom wares that the market deserves.

Completing the product portfolio is a new range of accessories called Chorus which was also introduced to complement the new, modern-style suites.

Details from Armitage Shanks (Dublin) Ltd, Unit 1, Cookstown Industrial Estate Extension, Tallaght, Dublin 24.  
Tel: 01 - 451 0044; Fax: 01 - 452 6886.

## Flair Capella Shower Enclosures

The Capella range of shower enclosures from Flair International offers a comprehensive choice of installation options. Designed to facilitate ease of assembly and installation, Capella shower enclosures feature telescopic

adjustment and, as such, are suitable for installation on a variety of shower tray sizes by simply adjusting two screws in the telescopic panel.

The Capella Pivot Door is offered in two standard sizes – 800mm which adjusts between 685mm and 810mm and a 900mm version which adjusts from 785mm to 910mm. The bi-fold is offered in 800mm and, like the Pivot door, adjusts between 685mm and 810mm. There is also a jumbo variety in the Bi-Fold 1000mm which adjusts between 785mm and 1030mm. The Capella Front Entry is offered as a 800mm, 900mm and 1300mm ... a popular choice for those who prefer a larger shower area.

A Corner Entry is also offered with two standard sizes in 800mm and 900mm, catering from a minimum size of 683mm to a maximum size of 895mm.

The Capella enclosure range is offered in a choice of attractive Bodyline glass or, as an alternative, clear unprinted glass is available. Profile finishes include white, bright silver and bright gold.

To further facilitate ease of installation, all shower doors are reversible for right or left hand opening, incorporate a full-length magnetic door strip for a positive door action and feature a full-length integral door handle.

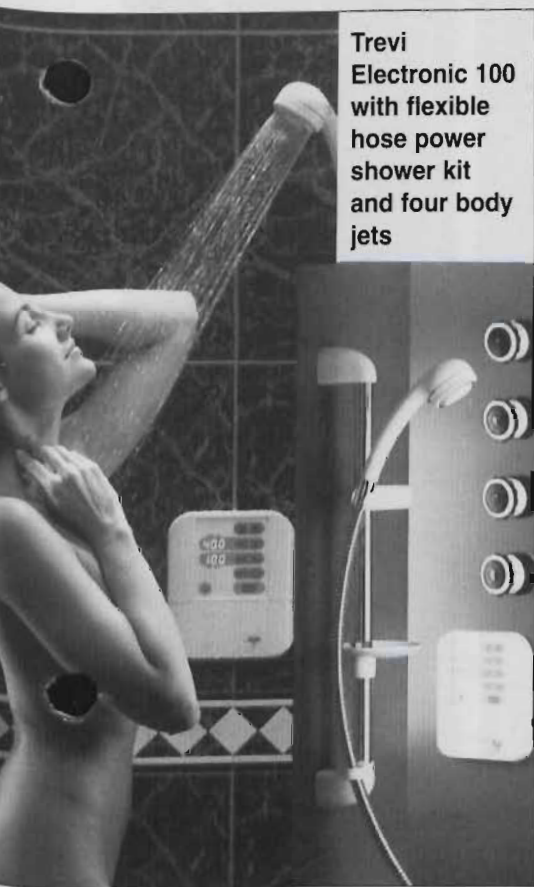
The Capella range of enclosures is just one of a number of enclosure ranges available from Flair International Ltd. All Flair shower enclosures and bathscreens are manufactured under the IS EN ISO 9002 quality system and conform to the BS6206 Class A glass specification. All Flair shower enclosures and bathscreens are manufactured in Bailieborough, Co Cavan and, as such, are backed by a service support system that is second to none.

Further product information and company details are available by contacting the Flair International sales office direct at Tel: 043 - 65294.



# Trevi Showers – Precise Control, Safety & Innovative Styling

**T**revi Showers, the specialist shower division of Ideal-Standard now available in Ireland from B J Caraher (Distributors) Ltd, offers a wide range of showers and has an excellent reputation for the precision



**Trevi Electronic 100 with flexible hose power shower kit and four body jets**

engineering of safe and reliable products.

The range is extensive offering everything from simple traditional styling through to state-of-the-art indulgence. Brief details of the various options are as follows:-

Trevi Therm is a thermostatic valve in which the modern styling hides a maintenance-free non-drip, ceramic

disc to give precise control and smooth action;

Trevi Traditional offers classic, old-fashioned looks with up-to-the-minute technology and fits easily into a nostalgia-style bathroom;

If a simple blender shower is required, Trevi Blend delivers a perfect blend of water flow and temperature control in a single level movement;

At the opposite end of the scale, Trevi Electronic 100/200 will even tell the time. Trevi Electronic can be programmed to deliver a shower or fill a bath in exactly the way or at the temperature required;

The most recent additions to the Trevi Showers product range are Trevi Jet and Trevi Boost. Both are innovative, exciting products which extend the flexibility and features of the Trevi range.

Trevi Boost is a unique shower valve utilising the Venturi principle to harness the power of the cold mains water supply to boost the shower flow;

Trevi Jet is the company's first cabinet power shower, designed to meet the growing market for such units. One trim, smart cabinet contains the mixing valve, electronics and pump. The pump is low-voltage and extremely quiet.

### X-Cite Accessories

The name X-Cite, chosen for the successful Trevi brand's new range

of luxury power shower accessories, reflects the excitement of high-performance showering already achieved with the brand's high-quality valves. At the same time it extends the existing mid-market range into higher market sectors.

Suitable for use with any of the company's range of shower valves (with the exception of Trevi Boost and Trevi Jet) these accessories are intended only for high-pressure pumped or unvented systems, not the low-pressure alternatives.

The perception of luxury is exemplified not only by the substantial shower head but also by the choice of finishes. These include chrome, light gold, white and Mixage, a combination of chrome and light gold which in itself betokens luxury in today's marketplace.

Selection of normal, soft or massage mode is made simply by turning the head. Other items in the range include a riser bar, flexible hose, parking station with push-button slider, two luxury acrylic soap and shampoo trays, a fixed-head variant, and matching body jets.

The head is protected from limescale build-up both by the high pressure of water flowing through it and a rubber outer ring which expands and contracts with high and low temperatures. If any descaling is still needed, the head is easily dismantled for that purpose.

### CONTACT

**Sales Office,  
B J Caraher (Distributors) Ltd.  
Tel: 08 01238 511071;**

**Jim Ennis, Dublin.  
Tel: 088 - 562456.**

# Opale

WHAT MORE  
CAN WE  
SAY...

...Luxurious, yet practical, Stylish and elegant with beautiful designs including cut glass options. Highly polished profiles in antique gold and chrome finishes. Reliable and functional, spacious yet compact. Adjustable and adaptable, safety glass that's easy to clean and leak proof. Access options, smooth positive action, high quality. No maintenance.

What more can we say?

Flair International, Ireland's leading shower screen and enclosure manufacturer. Irish with innovation.

Contact our sales office for a brochure or details of your local stockist. Telephone 042 65294.





# CIBSE NEWS

## CIBSE - AGM Notice

The Annual General Meeting of the CIBSE Republic of Ireland Branch will be held on Thursday, 25 April, 1996 at the IEI, 22 Clyde Road, Dublin 4. The meeting will commence at 6pm. Tea and sandwiches will be served from 5.30pm.

Under the rules of the Institution, all Officers and half the Committee are required to resign.

The Committee nominates the following Officers for the 1996/97 session.

Chairman - Oliver Reddy  
 Vice-Chairman - Herbert Taylor  
 Hon-Secretary - James Curley  
 Hon-Treasurer - Joe Lawlor

The Committee also nominates the following members from last year's Committee - Colin Murphy (Public Relations); Brian Homan; Sean Ascough; Peter O'Dowd; Paddy Clonan; Ken Beattie; and Matt Mohan.

The following person is also proposed for the Committee: Margaret Dolan proposed by Oliver Reddy, seconded by James Curley.

Regional Representatives -  
 Cork: Barry Leach; Galway: Bill Noone.

The above nominations and the retirement of the existing Committee members are all in accordance with the rules for regions as laid down by the Council.

Also as per these rules, further nominations in writing may be received by the Hon-Secretary within 21 days of the date of this notification, together with the written consent of such persons to accept office, if elected.

NB: Note a change to the original CIBSE programme: There will be no technical evening on 25 April, 1996.

## Sorry Gents!

Pictured right are Joe Lawlor, Herbert Taylor and Frank McCaffrey. While their names appeared in our photo-report on the CIBSE Annual Dinner in our last issue, their respective likenesses were off the mark. Sorry again gents. For those of you who don't already know, Joe Lawlor, Herbert Taylor and Frank McCaffrey are the handsome-looking gentlemen pictured right.



## CIBSE Student Awards

The Annual CIBSE Student Awards, in conjunction with Walker Air Conditioning Ltd, were held in DIT Bolton Street on 8 February.

The award winners were:-

Rory McShane - Degree Level;  
 Barry Coffey - Diploma Level;  
 Neil Moran - Certificate Level.

Making the occasion all the more memorable was the fact that CIBSE President, Alec Moir, and the CIBSE Secretary, Andrew Ramsay, were able to attend to present the students with their awards.

Right: CIBSE student awards - Neil Moran, Certificate Level, with Rory McShane, Degree Course; Alec Moir, President, CIBSE; and Barry Coffey, Diploma Course.



CIBSE/Walker student awards - Oliver Reddy, Chairman, CIBSE (ROI), with Neil Moran, Certificate Level; Alec Moir, President, CIBSE; and Andrew Ramsay, Secretary, CIBSE.



Left: Brendan King, Aer Rianta, with Colin Reid, Herbert Taylor, Vice-Chairman CIBSE (ROI) and Joe Lawlor.

## Airfield Lighting

Airfield Lighting was the subject of a well attended technical evening held on 22 February. Brendan King of Aer Rianta presented an excellent talk which was well illustrated by slides.

Touching on historical aspects, he dealt with all matters relating to Airfield Lighting and its associated controls and installation techniques. This was followed by a question and answer session.





## IRISH ENERGY CENTRE



**Virgil Bolger, Irish Energy Centre. Tel: 01 - 836 9080.**

# EU Funding for Energy Efficiency in Compressed Air

**T**he Irish Energy Centre has launched a financial incentive package to promote energy efficiency in compressed air systems. The centre has identified efficient compressed air technology for support under the Energy Efficiency Investment Support Scheme.

Individual proposals are being sought by the Irish Energy Centre in the areas of efficient generation, treatment, distribution, end-use and management of compressed air. The scheme will fund up to 40% of total project costs, and it is envisaged that under this call, up to 10 projects will be funded. A total fund of £150,000 has been allocated to this particular call.

The closing date for proposals under this call is 3 May, 1996.

## Boiler Efficiency – Commercial & Public Sectors

On Tuesday, 23 April, 1996, the Irish Energy Centre is holding a one-day seminar of interest to boiler users, property managers, maintenance managers, service engineers, architects, consulting engineers – indeed anyone with responsibility for boiler plant or maintenance in the commercial and/or public sectors. It will take place at the Royal Hospital Kilmainham, Dublin 8.

Managers in the commercial and public sectors are continually faced with the issue of ensuring the comfort of both customers and staff while business is being transacted. One of the main elements in this equation is the boiler plant, on which there is rarely technical guidance. Too often technical assistance is brought in to solve problems rather than to help prevent them.

Recognising this – and anxious to be of practical assistance – this seminar has been planned with their interests in mind. The role of the Irish Energy Centre is to promote cost-effective energy efficiency in the economy as a whole.

Key speakers from the UK and Ireland will present a

series of papers and case studies aimed at developing best practice. Emphasis will be on fuel efficiency, cost control, system reliability, and safety. Delegates will have ample opportunity to ask questions, talk to other boiler users, and meet service and product suppliers. In addition, there will be a specialist trade exhibition alongside the seminar throughout the day.

Achieving cost savings and reduced fuel wastage are obviously key targets for companies, and they are also part of the Irish Energy Centre's mission. Thus, part of the day's proceedings will include information on financial support for boiler efficiency investment.

Brochures, complete with booking form for the seminar, will be available shortly.

### DIARY DATES

**25 April – Workshop and site visit on Building Energy Management Systems in the Connemara Coast Hotel, Furbo, Co Galway;**

**8 May – Workshops – Energy Efficient Refrigeration in the Chemical and Brewing Sector. Venue: Silver Springs Hotel, Cork;**

**9 May – Workshops – Energy Efficient Refrigeration in the Meat, Dairy, Poultry and Fish Industries. Venue: Hibernian Hotel, Mallow, Co Cork.**

**Contact: Anne Duffy or Michele Keane. Tel: 01 - 836 9080; Fax: 01 - 808 2244.**

# *If you can find a central heating boiler or water heater that can outperform Rendamax ...*

## **BUY IT!**

**E**uro Gas Ltd has been marketing the **Rendamax** range of equipment in Ireland for the past 10 years. The boiler was first introduced to the Irish market in 1985 to provide an alternative means of providing high-temperature hot water to the food and meat industry. However, the equipment is now widely accepted throughout the mechanical services industry as a high-spec, high-tech, product.

It's unique patent design – incorporating a fully-modulating atmospheric gas burner coupled with an air damper – provides high-efficiency and reliability across a range of outputs varying from 60kw to 1,100kw. **Rendamax** can provide boilers for high/low operation, fully-modulating, fully-condensing, central heating or hot water.

The hot water range of boilers are now installed in some of Ireland's premier food manufacturing plants, including companies such as Dairy Gold Co-op Ltd/Galtee; Heinz Foods; Gold Star Meats; and Master Meats Bandon and Clonmel. All of the above installations provide high temperature hot water for sterilisation and wash down procedures.

Euro Gas Ltd has also supplied and commissioned central heating boilers to premises such as The Government Buildings where two **Rendamax** boilers provide central heating and hot water to the Taoiseach's office; Blanchardstown Hospital; Dr Steeven's Hospital; St Ita's Hospital; Zilinx; Claris Ltd; and

Microsoft Ireland Ltd. The most recent order secured by Euro Gas is for the new Merrion Hotel for central heating and domestic hot water boilers.

The **Rendamax** boiler is widely used in the hotel and leisure industry to provide sanitary hot water. Euro Gas recently commissioned two units in the re-furnished Clarence Hotel for Leo Lynch & Company Ltd. The **Rendamax** range of equipment is installed extensively in the Doyle Hotels and, in particular, the Westbury Hotel where Euro Gas supplied two 440kw boilers providing hot water for a 200-bedroom hotel.

Euro Gas has also been involved in the supply of large condensing boilers for projects such as the Hodson Bay Hotel, Athlone; Sligo Sports Centre; White's Hotel, Wexford; and swimming pool installations.

**Rendamax** BV has full British Gas Approval, is an ISO 9000 company and carries full CE approval to comply with all necessary European gas regulations. The boilers are manufactured for operation on natural gas or LPG. Units

come fully assembled and complete with gas train and controls and are fitted with Landis & Gyr PID controllers.

The **Rendamax** boiler is also suitable for coupling with flue dilution systems where conventional means of fluing is either difficult or expensive. This can provide the client and the architect with an alternative means of fluing the boiler plant.

Some other advantages of using **Rendamax** boilers are as follows:-

- ◆ They have very low noise levels, 50 dba when on full load;
- ◆ The unit operates off a very low gas pressure, 10 mbar on natural gas which eliminates in most cases the need for gas boosters which are cumbersome and extremely noisy;
- ◆ 84% combustion efficiency across the range with a 5:1 turndown on the gas burner and modulating air damper;
- ◆ Units come fully assembled and packaged and do not require any site assembly;
- ◆ Low flue gas temperatures providing low NOx to the atmosphere.



## **EURO GAS LTD.**

1 Duncairn Place, Bray, Co Wicklow.  
Tel: 01 - 286 8244; Fax: 01 - 286 1729.

# NEW PRODUCTS AND LITERATURE

## Alnor - Ventilation & Environmental Control Measurement

The Bolometer junior is a small lightweight volumetric flow meter for supply and exhaust air flows. The instrument uses a mechanical sensor and hence is completely independent of batteries and is intrinsically safe. The Bolometer junior is also extremely easy to use. All you have to do is select measuring range and supply or exhaust air flow. The Bolometer junior is offered with a 600 x 600mm hood or a 400 x 400mm hood. Each



Alnor Bolometer lightweight volumetric flow meter for supply and exhaust air flows. Details from Manotherm.

hood can be bought separately if the customer wants both hoods or decides to update at a later time.

Tests performed at Alnor show that the 400 x 400mm hood is accurate for exhaust air flows through the whole range and for

supply air in the lowest range. The limitation is due to the short hood.

The Bolometer junior is offered with imperial and metric units:

Range: 0-95, 50-290 and 200-660 l/s (5 l/s per division at lowest range);

□ or 0-340, 200-1000 and 800-

2400 m<sup>3</sup>/h (20 m<sup>3</sup>/h per division at lowest range);

□ or 0-200, 100-600 and 400-1400 cfm (10 cfm per division at lowest range).

Details from Manotherm Ltd, 4 Walkinstown Road, Dublin 12. Tel: 01 - 452 2355; Fax: 01 - 451 6919.

## Vectaire - CB/CK Fans for Internal Rooms

With a total of 13 models in its C range of centrifugal fans, Vectaire provides a comprehensive solution to ventilation requirements in kitchens, bathrooms, shower-rooms and toilets where long lengths of ducting are required.

Typically used in internal rooms, the high-pressure CB/CK range fans will extract up to 300m<sup>3</sup> of air per hour along around 40 metres of ducting.

Available in three standard models,

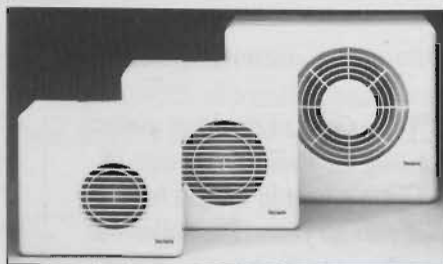
fans in the range can also be supplied with a number of special features including timers, pull cords and humidstat control. Two speed fans are also available.

By combining each of the special features, Vectaire's CB/CK range models can satisfy almost any ventilation requirement. Pull cord operation can be combined with humidstat control, ensuring that fans operate when humidity reaches 65%, while also allowing manual operation when required.

In addition, the fans - which have a 10cm diameter outlet - incorporate a spring-loaded, back-draught shutter designed to open when the fan is extracting air and remain closed when the fan is not working, thereby preventing the re-entry of stale air.

All fans in the CB/CK range can be fitted to ceilings or walls and can be supplied with a range of flat or flexible ducting and a choice of grilles.

Contact: Gay Byrne, Primetime Eltech. Tel: 01 - 490 2632.



Vectaire's range of centrifugal fans provides a comprehensive solution to ventilation problems in bathrooms, kitchens, shower-rooms and toilets

## Kane-May Combustion Analyser

SW Carty & Son Ltd, the Irish distributor of the Kane-May range of environmental test instruments, has introduced a new range of combustion analysers called the KM900 Series.

Compact and easy to operate, the KM900 range is suitable for domestic and industrial flue gas analysis. The large LCD display shows eight different parameters, simultaneously, including calculations of boiler efficiency and pollution.

The KM900 has a memory which is capable of storing up to 200 readings that can be transferred to a computer via an infra-red or serial link. The printout displays information such as date, time, customer name and telephone number.

There are four models in the KM900 range to choose from. The KM900 measures oxygen, flue and nett temperature and calculates carbon dioxide, boiler efficiency, excess air and losses.

Additionally, the KM900CO calculates the carbon monoxide/carbon dioxide ratio otherwise known as the "Poison Index", while NO<sub>x</sub>, NO and increased accuracy of CO are measured by a further two optional analysers.

The instruments come complete with 2-year oxygen cell guarantee, long-life rechargeable batteries, protective rubber sleeves and battery chargers. A choice of flue gas probes are available to suit all customer requirements.

Contact: John Duggan, SW Carty & Son. Tel: 01 - 450 8046.





## FOR GROWN UP PERFORMANCE THE CHOICE IS CHILD'S PLAY.

For high performance there's really no comparison. Compared to other plumbing and heating materials, copper puts professional installers firmly in the driving seat. Offering an enviable pedigree combined with unsurpassed performance,



copper clearly is in a class of its own. With over four million miles of proven installations on the clock, you can be confident of worry free, trouble free results that last and last. Stay out in front – choose copper!

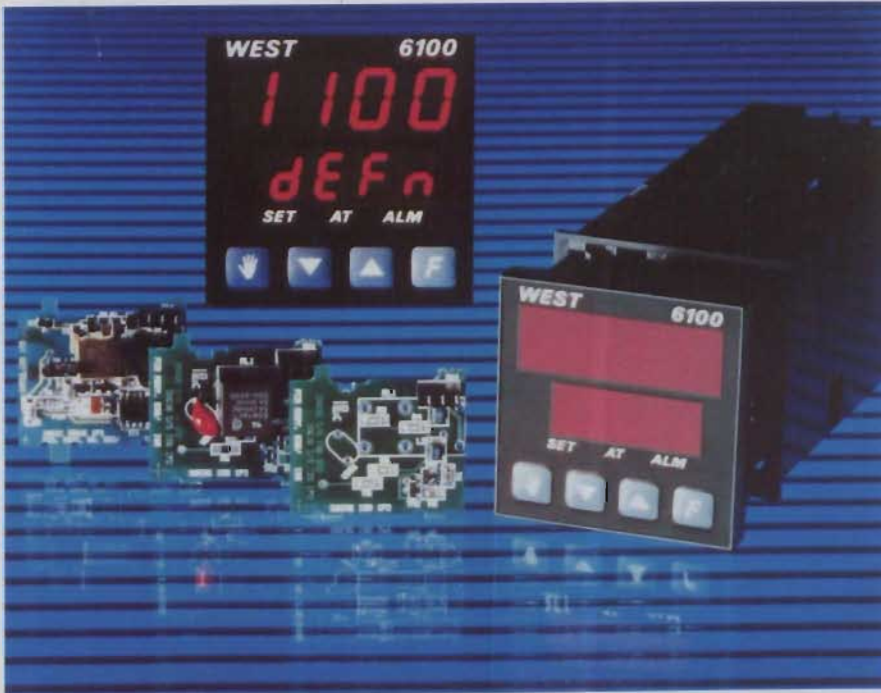
**The Professional Choice  
for Plumbing & Heating Systems**

EUROPEAN COPPER PLUMBING PROMOTIONAL CAMPAIGN, 10 GREENFIELD CRESCENT, BIRMINGHAM B15 3AU



# MANOTHERM LIMITED

## THE CONTROL CENTRES



THE WORLD'S MOST ADVANCED 1/16 DIN PROCESS CONTROLLER

### 6100 - KEY FEATURES AT A GLANCE

- \* Dual four-digit display (10mm top, 7.5mm bottom)
- \* Auto/Manual, Self-Tune & Pre-Tune, Ramping Setpoint.
- \* Universal input and power supply (single jumper for input type)
- \* Choice of relay/SSR or linear output product (two base builds)
- \* Additional plug-in outputs.
- \* Comprehensive alarm strategy - AND/OR & loop alarm.
- \* No-battery design (E<sup>2</sup> technology - 100 years retention)
- \* IP54 rating (IP65 pending test)
- \* RS485 option (selectable Baud rate up to 9600)

## PROCESS CONTROL



### WE CAN OFFER:

- Power Supplies
- Temperature and Resistance to Current Transmitters
- Isolation Amplifiers
- Trip Amplifiers
- Controllers
- Digital-converters
- Analog-converters
- Dividers
- Linearisers
- PC & PLC interface
- Plug-in Modules-Eurocards

PR Electronics provide innovative products to solve industrial problems.

## MANOTHERM LTD.

ONE STOP SHOP FOR INDUSTRIAL INSTRUMENTS



For a Free Technical Brochure contact  
**Manotherm Ltd - The Control Centre:**

4, Walkinstown Road, Dublin 12. Tel: 01- 4522355. Telex: 93388. Fax: 01- 4516919.

10, Knockbracken Park, Belfast BT6 OHL. Tel: 0232-491966. Fax: 0232-491275.