


10-1-1995

BS News

Follow this and additional works at: <https://arrow.tudublin.ie/bsn>

 Part of the [Civil Engineering Commons](#), [Construction Engineering Commons](#), and the [Construction Engineering and Management Commons](#)

Recommended Citation

(1995) "BS News," *Building Services News*: Vol. 34: Iss. 10, Article 1.

doi:10.21427/D78T4G

Available at: <https://arrow.tudublin.ie/bsn/vol34/iss10/1>

This Article is brought to you for free and open access by the Journals at ARROW@TU Dublin. It has been accepted for inclusion in Building Services News by an authorized administrator of ARROW@TU Dublin. For more information, please contact yvonne.desmond@tudublin.ie, arrow.admin@tudublin.ie, brian.widdis@tudublin.ie.



This work is licensed under a [Creative Commons Attribution-Noncommercial-Share Alike 3.0 License](#)

BSNews

November/December 1995

IRISH BUILDING SERVICES NEWS

IDHE Welcomes Standards Controls

The IDHE has reaffirmed its fundamental objectives by setting in very carefully-planned and professionally-structured programme which will see a return to the establishment of – and adherence to – a set of industry wide standards to cover the full spectrum of the heating industry.



IDHE Chairman Barry Kenna.

The Institute is first and foremost an educational/standards body but recent years has seen something of a switch in emphasis to much broader issues.

A conscious effort is now being made to forge strong, cooperative links with all other heating industry interests. The fact that this is being done in a manner which does not seek to pull everyone under the IDHE umbrella is yet another sign of maturity. Hence the developing relationship between the Institute and the Alliance of Heating & Plumbing

Contractors in Cork.

Ironically, this re-appraisal comes at an opportune time from a commercial viewpoint.

Whether the industry likes it or not, standards, work practices and codes of conduct are increasingly being imposed through local Government and EU directives. This process will gather even greater momentum in the coming 12 months and there is no doubt that a clearly-defined and onerous Code of Practice will be imposed on the heating industry in Ireland – in relation to installations and appliances – sooner rather than later.

There is no point in dismissing the imposition of such controls as bureaucratic meddling when

We want to establish the IDHE as the automatic choice for consultation and advice when the civil servants get down to the drafting of standards and controls

the facts prove that such controls are long overdue. There are very obvious shortcomings within the system at present. They must be acknowledged and addressed. If they are not, some outside legislative authority will do it. The implications of such a scenario could be disastrous for many. It's not just a question of bureaucracy ... people's livelihoods are what's at stake here.

"The IDHE's objective is to be a major influencing force in the determination of such a Code of Practice", says current Institute Chairman Barry Kenna. "We want to establish the IDHE as the automatic choice for consultation and advice when the civil servants get down to the drafting of these standards and controls. However, to do this requires a more enlightened attitude on the part of the heating industry at large and a more honest

Seasons Greetings

The management and staff of Pressline Ltd, publishers of BSNews, wish all our advertisers and readers a very happy and peaceful Christmas and a prosperous New Year.

appraisal of the current situation. Responsible operators – be it as contractors, maintenance engineers or product suppliers – have nothing to fear.

"As an industry, we have the means – and now the will and determination – to raise the standards of all aspects of the heating sector. The IDHE's 1995/1996 programme is devised precisely to do just that. More importantly, it is tailored to accommodate the current status quo whereby it facilitates the needs of long-established operatives who are in fact "going back to school" and also of those just entering the industry. In this respect the Institute's Diploma Course at Bolton Street is all-embracing and is suitable for installers, sales and distributor personnel.

"Then there are the excellent Bord Gais/Fas GI1 (general), GI2 (installation) and GI3

• Continued on page 12

BJ Caraher at Interbuild



This group of BJ Caraher (distributors) customers is pictured at Ideal Standard's factory which they visited prior to attending Interbuild in Birmingham. See also page 19.



A Fitting Partnership



Hevac Limited
Industrial, Commercial & Domestic Heating
70/72 Lower Dorset Street, Dublin 1
Tel: 8301211, Fax: 8301390

Building Services News*

ISSN 0791-0878

Published by:
Pressline Ltd,
5-7 Main Street,
Blackrock, Co Dublin.
Tel: 01-288 5001/2/3
Fax: 01-2886966

Editor: Pat Lehane
Advertisement Manager: Joe Warren
Telephone Sales: Ita Moore

Administration: Edel Burke

Origination and Design:
Pressline Ltd. Tel: 01 - 288 5001

Subscription: One Year — £27

Printed by: Kilkenny People.

© All editorial contents and all advertisements prepared by the publishers, Pressline Ltd.

* Incorporating Irish Heating & Ventilating News.

Readership Data

Irish Building Services News (formerly Irish H&V News) is Ireland's only Building Services magazine providing coverage of heating, ventilating, air conditioning, refrigeration, sanitaryware, plumbing, maintenance and environmental industries. It is the only publication catering exclusively for these industries and its circulation includes members of the following:-

Chartered Institution of Building Services Engineers (CIBSE);

The Mechanical Engineering & Building Contractors' Association (MEBSCA);

The Association of Consulting Engineers of Ireland (ACEI); The Mechanical Engineering Contractors' Association;

The Institute of Domestic Heating Engineers (IDHE);

The Registered Heating Contractors Association; The Maintenance, Energy & Environmental Technology Association (MEETA) which incorporates energy managers and maintenance managers; The Energy Conservation & District Heating Association; The Institute of Plumbing; The Irish Home Builders Association (IHBA); Builders Merchants/Trade Supply Outlets.

In addition, Irish Building Services News circulates to independent building services contractors and key executives in industry, Government, Semi-State and local authority bodies. Essentially, our circulation is virtually saturation coverage of all those with an interest and/or involvement in the industry.

Published by ARROW@TU Dublin, 1995

et al.: BS News

Contents

PAGE 2

FANS

Round-up of latest product information from leading market players.

PAGE 6

CIBSE NEWS

PAGE 12

TRADE NEWS



IDHE/Vokera – Alan Hayes, Technical Department Vokera, UK with Pat Scriven, Area Sales Manager, Vokera; Claudio R Guglielmucci, Managing Director, Vokera; and Barry Kenna, IDHE Chairman.

IBP Conex and Hevac – a Fitting Partnership; IDHE Welcomes Standards Controls; Myson Pumps – Installers' Choice; Get that Intumescent 'Seal Of Approval'; West Fuzz Logic Quality Control; IDHE Student Diplomas; Stopcock Manifold System; BTU Woodbrook Results; York Acoustic Enclosures; Eamonn Browne – An Appreciation; Potterton Statesman Make Oil Option Even More Attractive.

PAGE 19

EXHIBITION REVIEW

A milestone in the construction industry has been celebrated this year with the 100th birthday of Interbuild, the British building exhibition. From some 90 exhibitors in 1895, Interbuild has grown to encompass over 1,200 in its centenary year. During the six days of the show, over 100,000 trade visitors attended the exhibition. Our report brings you a few of the interesting products that caught the eye of *BSNews*.



BSNews Year Planner 1996

BSNews Year Planner 1996 comes to you free of charge as an insert with this, the November/December issue of the magazine. Additional copies are available on request.

Call Edel at Tel: 01 - 288 5001.

Euroseries and Eurofoil from Dan Chambers

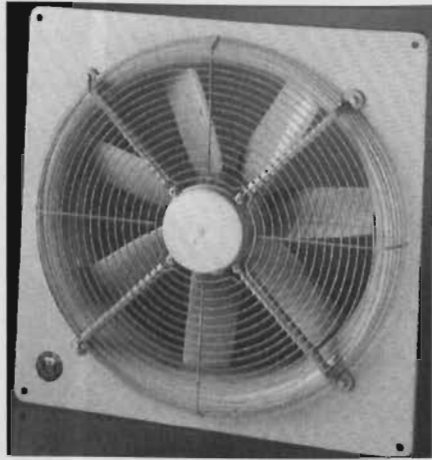
Twenty years, in arduous conditions throughout the world, have honed the reputation of the *Ziehl Abegg* Euroseries and Eurofoil fans now available from Dan Chambers Ltd. In the UK, the product enjoys brand leadership status because of its consistent performance and reliability, factors which also underline its growing market strength in Ireland.

Even though improving a product with a life expectancy exceeding 20 years and a failure rate of less than one per thousand is a daunting exercise, the new range now boasts two new important benefits. Most have Class F insulation as standard and a 5-year guarantee.

"Spanning 83 models ranging from 200mm to 1000mm diameter and air performances up to 13.75m³/s, both Euroseries and Eurofoil offer speed controllable energy consumption that is 10-30% lower than that of conventional motors", says Dan Chambers.

Precision, die-cast aluminium motor and axial impeller means perfect vibration-free running, coupled with the renowned speed controlability and energy efficiency of the super slim external rotor motor with "Hot Spot" protection.

The Euroseries and Eurofoil – with its flat space-saving profile – is quality assured (BSEN ISO 9001) and all performance testing is to BS848 Parts 1 and 2. All the fans arrive fully assembled, most with pre-wired terminal



From the Euroseries range from Dan Chambers Ltd

boxes, ready for immediate installation and are available ex-stock from Dan Chambers Ltd, along with a full range of ancillaries and speed controllers.

The *Ziehl Abegg* motors have a high power factor which means low amperage and consequently lower costs. At full speed, energy consumption can be 10-30% lower than a conventional motor. Savings can be further enhanced by the use of speed controllers.

Euroseries/Eurofoil benefits

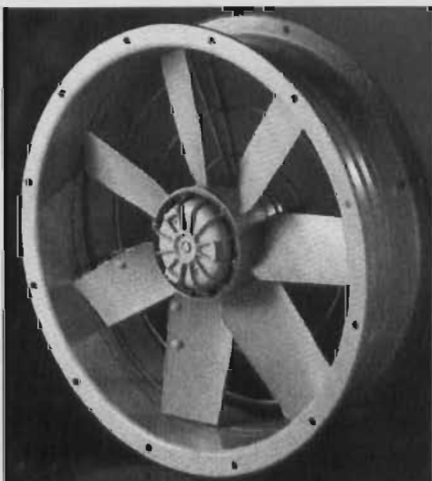
- 5-year warranty
- Class F insulation to withstand temperatures up to 60°C+
- Suitable for operation in atmospheres up to 95% RH

- Speed controlability
 - Most fans are reversible
 - Energy-saving external rotor motor
 - Tested to latest British and European standards
 - Stove-enamelled with two coats of corrosion-resistant paint
 - "Hot Spot" motor protection
 - Diecast aluminium hub and impeller
- Contact: Dan Chambers Ltd.
Tel: 01 - 830 3222.

Thermo-Air Ireland – Multiple Fan Choice

Thermo-Air Ireland Ltd, the Carlow-based Irish manufacturing arm of the international Thermo-Air Group with companies in Holland, Germany, France and the UK, has one of the most comprehensive fan ranges in the market. The Thermo-Air brand is synonymous with quality, the company enjoying a justifiable reputation as one of the foremost and most reliable suppliers of all manner of fans.

The standard stock range is most comprehensive covering virtually every conceivable requirement. Nonetheless,



From the Eurofoil series from Dan Chambers Ltd

Control of Natural Ventilation

New guidance on the control of natural ventilation has just been published by BSRIA. 'Control of Natural Ventilation' (TN11/95) provides information on the application of BMS (Building Management Systems) to natural ventilation.

While natural ventilation has the potential to replace or supplement air conditioning, comfort cooling and mechanical ventilation – and while there are obvious environmental advantages – an effective control strategy is essential to limit energy consumption and maximise thermal comfort.

This BSRIA Technical Note presents a number of generic control strategies for natural ventilation, including control with mixed-mode ventilation and night cooling. It explains how commissioning and fine tuning buildings using these strategies can be undertaken and gives appropriate control setpoints. A comparison of typical system costs utilising various ventilation types is also provided.

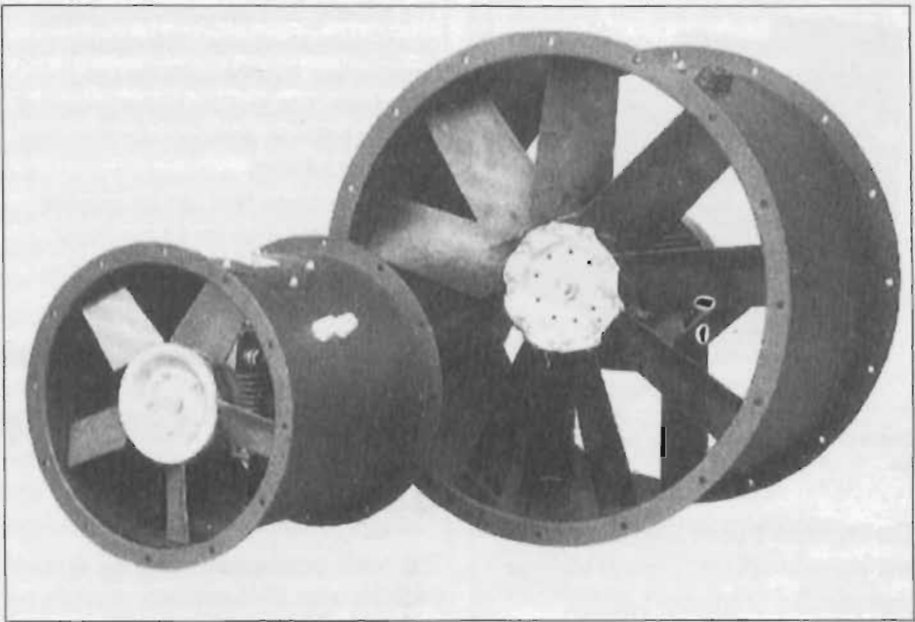
product review: fans

where special applications demand something out of the ordinary, there is sufficient flexibility to satisfy even the most unusual request.

Brief details of some of the fan types available from Thermo-Air are as follows:-

Index fans — This range comprises a comprehensive number of options such as forward-curved, double-inlet, direct-driven centrifugal fans; single- and direct-driven units in cube form; direct-driven, tube axial-flow fans; and forward and backward-curved, single and double-inlet, v-belt driven centrifugal fans.

Direct-driven centrifugal fans — Thermo-Air's DDMH-fans are double-inlet centrifugal fans with forward-curved blades. The impellers are constructed



Direct-driven, tube axial flow fan from Thermo-Air

from aluminium, galvanised steel or mild steel (dip-painted), all dynamically balanced and directly mounted on to a

motor shaft. The housing is manufactured from heavy-gauge galvanised steel.

THE Strength

ADJUSTABLE PITCH CASED AXIALS
Only from Roof Units Group


- Adjustable Pitch
- Galvanised Casing
- IP55 Motor
- Arduous Applications
- 315mm to 2000mm Diameter

EUROPITCH

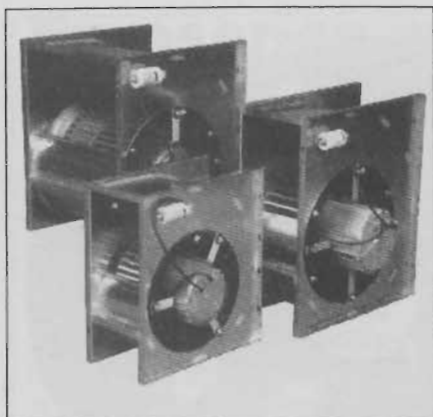
DAN CHAMBERS

VENTILATION

68 Moyle Road, Dublin
Industrial Estate,
Dublin 11.
Tel: 01 - 830 3222;
Fax: 01 - 830 8888



product review: fans



Direct-driven centrifugal fans from Thermo-Air

The improved 3-point suspension with anti-vibration mounts, together with the high standard of impeller balance, ensures a vibration-free, silent operation. The two mounting feet are supplied loose to enable positioning in any of the four discharge positions.

Other direct-driven centrifugal fans in the range are the DDE and DDHE single-inlet units with forward-curved blades; the DS range; the DPA range; and the DDEM range.

Direct-driven tube axial-flow fans — The TAX range housing is of heavy-gauge steel (welded) and is finished with a special industrial coating while an access door and two Pg's are fitted near the motor terminal box. The inlet and outlet flanges are according to DIN 24154 Series 2.

The impeller is of moulded polypropylene blades, clamped in die-cast aluminium hubsets. All impellers are statically and dynamically balanced to $Q = 6.3$.

V-belt driven centrifugal fans — The HE fans are high-efficiency, V-belt driven, double-inlet centrifugal fans with forward curved-blades. The impeller is constructed from heavy gauge galvanised steel, dynamically balanced and fitted on to the shaft, which is carried in two, either heavy-duty steel housing rubber-cushioned "sealed-for-life" (thru HE-315), or heavy-duty cast-iron regreasable (HE-355 and larger) ball bearings.

The housing is constructed from heavy-gauge galvanised steel. The robust construction, together with the low speed selection and the high standard of impeller balance, ensure a vibration-free and silent running.

The V-belt driven fans can be supplied with motor and drive on a base frame.

The above is but a brief sample of the broad and expansive scope of the

Thermo Air fans range which also includes a comprehensive range of accessories. Full details on the entire range, including copies of the newly-published technical manual which covers the company's entire portfolio, are available on request.

Contact: Jack Dempsey, Thermo-Air.
Tel: 0503 - 31646/43206.

Second Generation Electro-vap from JS

The newly-developed Electro-vap is now available from JS Humidifiers. A totally re-thought version of this already successful steam humidifier — the Electro-vap 2 — features many improvements to the original versions.

Two models are available, ELS and ELD, the latter featuring a digital display. Electronic circuitry has been totally updated to give the new units more effective control and this, together with the newly-designed steam cylinders, means that both versions will operate more efficiently in a wider range of water qualities. It is claimed by JS that water quality can vary from 30 to 1200 $\mu\text{S}/\text{cm}$ without any loss of performance.

The ELS display panel shows power supply, steam production, overcurrent and high water level. The ELD digital features an integral controller and remote proportional sensor, the digital display panel showing steam production in kilogrammes per hour, relative humidity level and set point. Where maximum output is critical, the steam output can be programmed using the steam volume control.

Many of the original features which have made the Electro-vap range so popular with users remain. The cleanable or disposable cylinders option, the fact that the units are easily maintained once installed and the highly-competitive prices from JS with ex-stock delivery. To these, JS has added for the first time, a unique 2-year warranty. A full range of spares are always available from their Rustington Head Office, West Sussex, UK.

Maximum outputs from the new Electro-vap 2 range from 5 to 90 kilogrammes

per hour of steam with on/off, stepped proportional control. Distribution is through stainless steel pipes. Room ventilation units are also available for direct air humidification. Also available from JS in the Electro-vap range is the Compact ELC humidifier package with outputs ranging from 1-2 kilogrammes per hour. These units are ideal for small offices and computer rooms and the package includes room humidistats and fans.

Contact: Mark Stafford, JS Industrial Services. Tel: 0044 181 290 1703 (general); John Barker. Tel: 0044 1903 850 200.



The new Electro-vap 2 from JS Industrial Services.

New Performer From Woods

The new Woods high-performance JM HT (High Temperature) Aerofoil fan range, has been specially designed to meet the requirements of powered smoke ventilation systems.

The JM HT series combines the standard JM range's benefits of volume, pressure, availability, low noise, competitive pricing and energy efficiency, with high-temperature tolerance for emergency smoke extraction.

One model is available from GEC Distributors in five different temperature/time endurance categories and nine different diameters ranging from 315mm to 1000mm.

All rotating impeller components are x-rayed to ensure soundness of castings essential for fans operating in fire safety systems. Under test, the fans comply in accordance with BS7346 Part 2. Much of the high temperature test programme has been undertaken in independent laboratories at CTICM in France, and the Technische Universitat in Munich, Germany.

"High temperature smoke venting represents one of the fastest growing markets worldwide, and the JM HT Aerofoil has been developed to comply with the most demanding international regulations", says GEC's Dermot Spain.

The high performance standard JM Aerofoil fan range was originally designed with this as one of the applications in mind, so the HT models share a high proportion of standard components.

For example, the standard JM aluminium impeller is designed to withstand the accelerated stresses created by hot smoke ventilation, without modification. Unlike the ferrous metal impellers used traditionally in smoke venting fans, it also provides much higher levels of energy efficiency in day-to-day running.

Many standard JM fan casings and mountings can also accommodate the higher specification motors required for HT applications without alteration. The JM HT Aerofoil fan range provides models for each of these four temperature/endurance categories: 200°C/2 hours; 250°C/2 hours & 300°C/30 mins; 300°C/1 hour; 400°C/2 hours.

Contact: Dermot Spain, GEC Distributors.

Tel: 01 - 677 5413.

Thermo Air Irl Ltd has recently published its latest Technical Support Catalogue for its European customer base. The catalogue is the fifth in the series and contains, in addition to updates on all of the existing product range, details on its new ranges of:-

- ◆ Home Supply Units
- ◆ High Quality Air Handling Units
- ◆ Tube Axial Fans
- ◆ Specialist Air/Fume Extraction Equipment
- ◆ Spray Booth Equipment

Thermo Air will also make available, on application, a specialist fan catalogue from IMOFA Ltd and a full product price list.

For further information:

Tel: 0503 - 31646/43206;

Fax: 0503 - 42174

THERMO AIR[®]

TECHNISCH HANDBOEK
TECHNICAL MANUAL

5





CIBSE NEWS

Building Services Commissioning and Handovers

CIBSE held a very successful seminar on 15 November 1995 at the Institute of Engineers of Ireland, Clyde Road, entitled "Successful Building Services Commissioning and Handover". The seminar, - which was attended by about 80 delegates including representatives of contractors, consultants and building managers - heard four extremely well-prepared and presented papers from the following speakers:-

- Successful Building Services Commissioning and Handover : A Users Perspective - Speaker: David Jacobs, Irish Estates (Management) Ltd;
- Design for Commissioning and Handover - Speaker: Sean Ascough, Ove Arup & Partners Ireland;
- A Contractors View - Speaker: Tadhg Sullivan, FKM Engineering Ltd;
- Commissioning and Validation Procedures - Speaker: Martin Deevy, DCS Commissioning.

The presentations covered all aspects ranging from pre-tender design considerations and planning, to successful commissioning and ease of maintenance for the building operator.

NB: A limited number of bound copies of the proceedings are available at the price of £30 (+£5 P&P). This comprehensive volume comprises four technical papers written from the viewpoints of a building user, a

consulting engineer, an engineering contractor and a commissioning specialist and represents a good resumé of current and best practice in commissioning and handover.

Copies are available from Seán Ascough, c/o Ove Arup & Partners Ireland, 10 Wellington Road, Ballsbridge, Dublin 4. Tel: 01 - 668 3112; Fax: 01 - 668 3169. All payments must be made in advance and by cheque payable to CIBSE.

The fundamental point made by all speakers was that the successful commissioning and handover of building services starts at the design stage and involves the cooperation of the active design team.

The impact of the design of plant rooms, vertical and horizontal distribution space not only to house the plant and services, but to allow for ease of access for commissioning and maintenance was emphasised. Good light and good finishes (painted and dust-sealed are also very important.

The need for good design of plant spaces does not stop with the initial design. Consideration must be given to the means of access for replacement of plant which may be carried out every 20-25 years throughout the life of the building.

The role of the commissioning specialist was addressed by a number of speakers, and while it was their general agreement that the

Futures & Options Building Seminar

Subject - The mechanical and electrical design considerations at the Dublin International Futures and Options Exchange, Custom House Docks. Speakers - Jim Rogers and James Barry, BMEX.

Both presented an excellent and most informative seminar which was followed by a lively discussion period.



Pictured at the seminar were Brian Reilly, Jim Barry and Jim Rogers, all of VMRA.

responsibility for commissioning of a project lay with the contractor, two of the main difficulties experienced are the amount of time allocated in the building programme compared with the actual time left for when the main contractor is trying to achieve the completion date. The second difficulty is the amount of money allocated in the tender for commissioning. This, too, is generally reduced in the attempt to win the contract.

The consensus was that a prime cost sum should be included in the tender documents for independent commissioning and validation. This PC sum could then be let during the course of the contract based on a specification setting out clearly the extent of commissioning required.

Building management systems were singled out as being one of the greatest sources of difficulty in achieving the successful commissioning of a project, as the time required to commission such systems is generally underestimated and consequently under-priced, resulting in long battles between the building operator and the contractor.

The clear message from the seminar was that early and comprehensive planning will eliminate most problems.

Valve Technology Seminar

The subject will cover the changes in valve technology over the last 20 years, in particular the shift from gate and globe valves to ball and butterfly valves and the range of seals now available for these valves.

Wynn Lloyds Jones, a qualified instrumentation engineer, is the principal speaker. He is the Product Marketing Manager for industrial valves for the BSS Group.

His address will also look at actuators (both electric and pneumatic), fail-safe systems and fire-safe valves.



Left: CPD Seminar on Commissioning and Handover - Pat Sheridan, Waterford Regional Technical College with Paul Kilduff, Elenco Engineering and George Weston, Kirby Electrical.

Right: CPD Seminar on Commissioning and Handover - David Jacobs, Irish Estates with Martin Deevy, DCS Commissioning; Oliver Reddy, CIBSE Chairman; Tadhg Sullivan, FKM; and Seán Ascough, Ove Arup & Partners.



MYSON COMPACT – RUNNING OFF WITH ALL THE HONOURS



We said the Myson 'Compact' domestic pump range was going to be a hit – and it is. It's been judged a 'best of breed' success by installer and specifier alike since the day it was introduced.

Bred with pedigree qualities, it's **lighter, quieter** and more **user friendly** than anything that's gone before.

A true thoroughbred, it leads the market place in terms of reliability. With its unique no-quibble, full **30 months from date of manufacture warranty** – the Myson 'Compact' range offers a promise of reliability others can only aspire to.

Householders love it. Quiet and obedient to every command, once it's installed you'd never know it was there.

An installer's best friend, it's light and easy to handle – even in those awkward 'tight' refit situations. And it's quick to install, with large easy to wire terminals and captive screws. There's even a unique anti-rotation tommy bar hole that really takes the biscuit.

Built to doggedly carry on running whatever the system
Published by ARROW@TU Dublin 1995 Myson 'Compact' range has

the reassurance of a manual restart knob to apply greater torque in a controllable manner. It's far safer than any form of bleed screw or electric restart in letting off steam.

And with a choice of fixed single speed or switched 3-speed electronic control mated to a standard (5 metres) or high (6 metres) head unit, the Myson 'Compact' range is at home with just about any system configuration.

Reliable and bred for a long and trouble-free life, the Myson 'Compact' range is backed by the full expertise and commitment to service of Potterton Myson – the leading manufacturer of heating products. Definitely the one to get your paws on.

For a copy of our latest brochure please phone us on **01-4590870**.

Myson Pumps – All together a better alternative.

MYSON
PUMPS

POTTERTON MYSON (IRELAND),
BELGARD ROAD, TALLAGHT,
DUBLIN 24 Tel. 01-4590870 Fax. 01-4590880

Tantofex Appoint BJ Caraher

L eading european kitchen taps and mixers manufacturer Tantofex has appointed BJ Caraher (Distributors) as sole distributor for Ireland, taking in both Northern Ireland and the Republic of Ireland. Tantofex's reputation for quality in respect of design details, choices offered and product reliability and longevity is well-established. These strengths have been further reinforced by virtue of the fact that Tantofex is now part of Ideal Standard, itself a world-leader in bathrooms, taps and mixers.

Together, they have recently developed a new range of traditional taps and mixers — known as Provence, Tuscany and Ardenne respectively —



The Tuscany

which combine contemporary function with imaginative elegant styling.

When viewed in the context of Tantofex's existing and complementary Tantadisc, Tantara, Victoriana and



The Provence

Felbridge ranges, BJ Caraher is now in a position to provide the entire building services spectrum with an unrivalled, single-source portfolio which epitomises creativity and production excellence.

Every product in the expansive range is manufactured to exacting standards. The mixers have dual-flow spouts suitable for high-pressure, mains-fed systems or the more common combination of mains-fed, cold and tank-fed (low-pressure) hot supply.

Brief details of the new ranges are as follows:-



The Ardenne

Provence — A distinctive, ornate, single-hole mixer with styling which is evocative of rural France. Featuring a unique twin-flow swivel spout, this mixer looks especially good in mixage finish.

Other finishes available are chrome, antique brass and brushed brass.

Ardenne — An elegant, swan-necked, traditional-style mixer with swivel spout. Its easy-to-use distinctive ceramic lever handles and 1/4 turn ceramic disc cartridge ensure good looks and smooth operation.

Finishes available are chrome, antique brass and mixage.

Tuscany — This traditionally-styled, single-hole mixer fitting is very Italian in styling and features a high neck and twin-flow spout. The ornate capstan handles are particularly attractive.

Finishes available are chrome, antique brass and mixage.

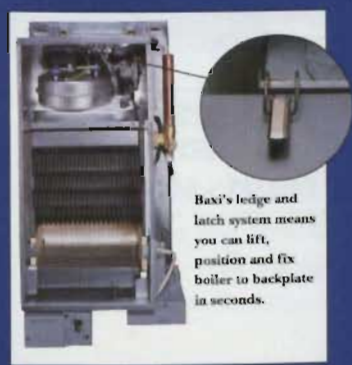
CONTACT

B J Caraher (distributors) Ltd.
Tel: 08 01238 511071

The Baxi Solo 2 PF. Another appliance that saves you time in the kitchen.



Designed so you can make short work of things, the Baxi Solo 2 PF is probably easier to install than any other central heating boiler on the market.



Baxi's ledge and latch system means you can lift, position and fix boiler to backplate in seconds.

How so? Firstly, all its components—even the cast iron monobloc heat exchanger – are located from the front.

Both burner and fan

assembly are obligingly self locating. And before you can say 'built-in rotating flue turret', you can select a left, right, rear or top flue direction. The combustion box door, meanwhile, is now held in place by just four quick release toggle latches.

Result? A boiler so straightforward to install and service, it cuts time and costs like no other. The Baxi Solo 2 PF, in a range of outputs up to 80,000 Btu/h. However did you manage without it?



EDI/Creda Appoint Nationwide Heating Distributors

EDI and Creda have enjoyed a successful partnership for over 35 years, supplying electric heating products into Ireland. This long experience has given them a good understanding of market requirements in Ireland, to meet the critical demands of specifiers and the comfort needs of the consumer.

The Creda brand is widely recognised as a market leader by specifiers, architects, local authorities, builders and housing associations, as well as consumers throughout Europe. The unrivalled Creda product range offers high quality, value and innovation.

To build further on the success the EDI Creda partnership has enjoyed over the years in Ireland, Creda heating products are now available from eight newly-appointed distributors, each already widely-recognised as an efficient, quality supplier to the electrical trade. They are:-

Howard Collins – Dublin.
Tel: 01 - 298 7366
Contact: Howard Collins

CT Electrical – Galway.
Tel: 091 - 67385
Contact: Peter Curran

Jack Fitzgerald – Limerick.
Tel: 061 - 412555
Contact: Jack Fitzgerald

Egan Electrical Equip – Dublin.
Tel: 01 - 456 4635
Contact: Barry Egan



Alex Kowalczyk, Manager of the Creda Applications Department, wants to design a heating system for you.



The Creda range of TSR Slimline Storage Heaters are simplicity itself, both to operate and install. These high-performance heaters have manually-operated heat storage and output controls. The attractive "super slim" heaters are competitively priced and economical to run.

Irwin Electric – Letterkenny.
Tel: 074 - 24240
Contact: Liam Irwin

M Kelliher & Sons Branches –
Cork – Tel: 021 - 311770;
Contact: Michael Stack
Limerick – Tel: 061 - 417442;
Contact: Gordon Stephenson
Waterford – Tel: 051 - 77755;
Contact: Danny Myler
Dublin – Tel: 01 - 4566717;
Contact: Peter Wolf
Tralee – Tel: 066 - 21144;
Contact: Tommy Sugrue

Wesco Branches –
Drogheda. Tel – 041 - 36571;
Contact: Matt Curran
Navan – Tel: 046 - 23203; Contact:
Phil Hagarthy
Newbridge – 045 - 433759;
Contact: Larry Mulvaney

EWL Electric Branches –
Cork – Tel: 021 - 546566;
Contact: Jerry O'Callaghan
Dublin (2 branches) –
Tel: 01 - 6764131; Contact: Pat Biggs
01 - 4506388; Contact: Des Hartnett;
Waterford – Tel: 051 - 74901
Contact: Paul Fitzgerald

These new distributors offer the full Creda heating range with many new additions this year. Included are manual storage heaters; fully-automatic storage heaters; Slimline storage fan

heaters; bathroom-sized storage heaters; and panel heaters with energy management controls.

Unrivalled Service Support

All Creda heating products are backed by the largest and best service operation in Europe and the network includes a service centre in Dublin. Creda provides a free 5-year parts and 1-year labour guarantee.

Safety and performance are critical to Creda and all products comply with the most stringent European standards.

Free Technical and Design Service

Creda's Applications Design Department will assist with technical and respond to any design requests. A heating design can be provided free of charge, along with a supply schedule and drawings if required, plus a quotation for the capital cost. This can be supplied in a smart presentation folder for presentation to the client. There is also the "Creda Specifier's Guide", which takes the guesswork and uncertainty out of appropriate product selection.

**Contact
EDI**

Tel: 01 - 626 4366

CREDA HAVE GOT IT COVERED

WITH THE WORLD'S MOST VERSATILE RANGE OF STORAGE HEATERS.

Whatever the situation or application - Creda's new range of market leading, high performance heat storage heaters will satisfy the most rigorous demands in virtually all domestic, commercial and residential locations.

Simple and quick to install, Creda storage heaters can provide both constant

background heat and extra heat on demand.

THE CSF COMFORTAIR RANGE

The Most Controllable

- ◆ Massive 60% + of stored heat available when required
- ◆ The most efficient storage fan heater available
- ◆ Free - standing, allowing for siting in any location



CSF COMFORTAIR

- ◆ Particularly suitable for commercial, healthcare and industrial applications



SFH SENSAIR

THE SFH SENS AIR RANGE

The Ultimate Combination

- ◆ Heat storage economy with direct acting heat flexibility
- ◆ Automatic heat storage control for greater comfort and efficiency



- ◆ Slimmest and most compact of its type
- ◆ Twice the heat retention of static storage heaters

THE TSF TURBO RANGE

The Most Popular

- ◆ Most popular range in its class
- ◆ 2-speed fans for responsive control
- ◆ Slim and superbly designed, for domestic and commercial applications
- ◆ Excellent heat retention capabilities for greater economy.



TSF TURBO

The Creda name assures you of the very best in design, performance and build quality, plus all the back-up support and after-sales service you'd expect from Europe's leader in innovative and advanced electrical appliances.

Creda

Creda Limited, Blythe Bridge, Stoke-on-Trent, Staffs, ST11 9LJ.
 Telephone: 01782 388388
 Fax: 01782 394599
 Contact Paul Glover

EDI LTD.
 Electro Diesel (Ireland) Limited
 Kylemore Park West, Ballyfermot, Dublin 10
 Telephone: 6264366 Fax: 6266471
 Contact Billy Burke

TRADE NEWS

IBP Conex and Hevac – a Fitting Partnership

The long-standing relationship between Hevac Ltd and Conex Sanbra Ltd, Tipton, West Midlands, UK, goes back many years and fully reflects the premier status that both names enjoy within the marketplace.

Conex Sanbra Ltd – part of the Delta plc Group – along with other IBP group manufacturing activities in Germany, Spain, France, and elsewhere in the UK, make the IBP Group the foremost manufacturer of fittings for jointing copper tubes in Europe.

Hevac first introduced Triflow solder ring capillary fittings to the Irish market in 1982, the first such fitting suitable for jointing Irish size copper tubes. Since then, sales of solder ring capillary fittings account for a significant part of the Irish copper tube fitting market.

Other IBP fittings products include IBP Delcop copper end feed capillary fittings, IBP Delbraze, and Clyde brazing fittings.

Conex compression fittings have full accreditation to all relevant regulatory requirements and standards, including IS 238.

Triflow capillary fittings are manufactured to similar exacting standards and they have ISO 9000 accreditation from the NSAI since 1987.

Innovation has always been the hallmark of Conex Sanbra Ltd, the new Conex Serviceman valve being a typical case in point. Serviceman comprises straight servicing valves and elbows designed to meet the UK Water Byelaw requirements which require the fitting of a

service valve as close as is practical to hot water storage cisterns, cylinders or tanks and float valves. The swivel connectors within Serviceman are especially suitable as they allow direct connection to float valves or taps. However, they are ideal for use in any terminal installation and are available in

sizes 15mm and 22mm Irish copper dimensions.

Extensive stocks of the entire Conex Sanbra range are held at Hevac's premises in Dorset Street, Dublin 1.

Contact: Declan Kissane, Hevac Ltd.

Tel: 01 - 830 1211.

IDHE Welcomes Controls

• Continued from front cover

(maintenance) courses designed specifically for gas. The IDHE fully supports these and urges all heating operatives to take the appropriate one(s) to suit their particular area of specialisation.

In respect of training and standards in oil, the IDHE is in the process of preparing a new course in conjunction with OFTEC. Full details should be available early in the new year.

As the foregoing clearly illustrates, the IDHE is determined to bring the heating industry into the 21st century. Members and prospective members – and that includes all those involved in the heating industry – could benefit enormously, and secure their future, by becoming actively involved.

Get That Irish Intumescent 'Seal' of Approval

Irish Intumescent Systems Ltd was started in 1984. It was established to specialise in the production and sale of intumescent fire seals for the construction industry.

The range of products include Pyrogrilles® for ventilation ducting, Pyrosleeves® and Pyrocoils® for the sealing of services where they pass through compartment floors or walls.

Air ducts or ventilation holes through fire resistant structures, such as door or walls, need to be sealed in a fire situation. Irish Intumescent Systems have developed Pyrogrille®, an intumescent fire resistant ventilation damper, to fit inside an air ventilation duct or aperture in a compartment floor

or wall, to seal these voids and maintain the fire integrity of the compartment. Pyrogrilles® can be made in any size up to 1000mmW x 600mmH and come in both 1/2 hour and 1 hour rating.

Irish Intumescent Systems are the only ISO9002 Quality Assured manufacturer of intumescent products in Ireland. All of their products have been tested to the relevant BS Standard and comply with the requirements of the Building Regulations 1991. Their products have recently been used on such prestigious jobs as:- Kerry Co-op; Avonmore Creameries; and ESB, Moneypoint.

Comprehensive technical literature on Pyrogrilles®, Pyrosleeves®, Pyrocoils® and all the other fire-sealing products is available on request from Irish Intumescent Systems.

Contact: Colm O'Shiel/Dermot Byrne.

Tel: 01 - 478 3316.



Conex compression fittings have full accreditation to all relevant regulatory requirements and standards, including IS 238

TRADE NEWS

Myson Pumps – Installers' Choice

The Myson "Compact" Range of domestic heating pumps was designed with the aid of installers.

This may seem a strange claim from a company whose engineering and design expertise has always set a benchmark but, in its opinion the installer, with years of hands-on experience is the best judge of what is needed for today's sophisticated central heating systems.

So Myson listened to installers and then designed and engineered a pump range that gives optimum performance in any system, coupled with a level of reliability unsurpassed in the marketplace.

It has a light, compact, ergonomically-designed casing for easy handling; enhanced motor torque for easier start-up and to overcome system debris; plus a host of other features. By making the pump lighter and smaller, it's easier to position. The unique tommy bar hole lets you hold it still while it's being installed while larger, easy-to-wire terminals with clearly-marked captive screws make connection quicker and simpler. It's also possible to reposition or replace the motor head without removing the pump from the system.

The safe and sure manual restart knob provides the simplest of methods to free the pump should it become stuck. It also provides a fast and safe means of venting the pump manually.

The Myson "Compact" range has also been designed to automatically vent on initial start-up should the manual venting procedure have not been adopted, thus preventing damage to shaft and bearings.

Whatever the system, there's a Myson "Compact" pump to suit – single-speed for simplicity or with 3-speed electrical control for greater flexibility. With its choice of fittings, the Myson "Compact" range is an ideal replacement to put new life into established systems.

Every Myson "Compact" pump comes with an extended warranty and is guaranteed for 30 months from date of manufacture.

Manufacture is to a quality system approved by British Standards to BS 5550 and Myson "Compact" pumps are Kitemark approved BS 5394.

With a specialist team of field and in-house technical engineers to take customer queries, Potterton Myson can provide expert advice on system design, specification and installation.

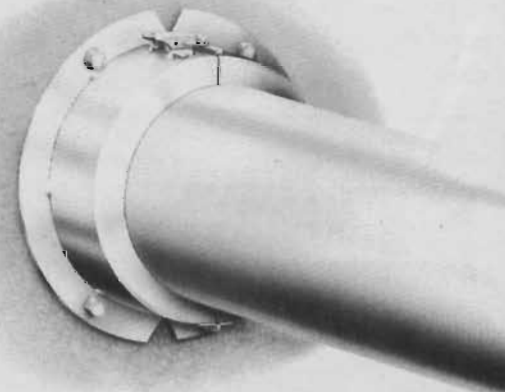
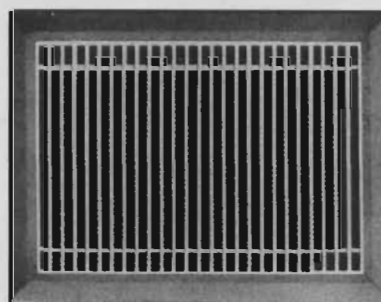


Full after-sales service and spares are also available and these are complemented by the company's unique training facility which is located at its headquarters on the Belgard Road.

Contact: Vincent Broderick. Tel: 01 - 459 0870.

The Myson Compact from Potterton Myson (Ireland) Ltd.

Every heating & ventilation installation should have our seal of approval.



However good any heating or ventilation system is, it's bound to have weak points where fire is concerned.

Which is why it's essential to include Irish Intumescent Systems seals in any installation.

Pyrogrille for ventilator grilles and air ducts; Pyrosleeve for metal and plastic pipes, electrical cables, trays and ducts. Tried and tested seals that fully meet the exacting standards set by the industry; that offer continual protection and will stop the spread of fire.

Irish Intumescent Systems seals. No heating or ventilation system is complete without them.



irish intumescent systems limited



11 Synge Place • Dublin 8 • Ireland
Tel: (01) 478 3316 • Fax: (01) 478 3431

TRADE NEWS

West Fuzz Logic Quality Control

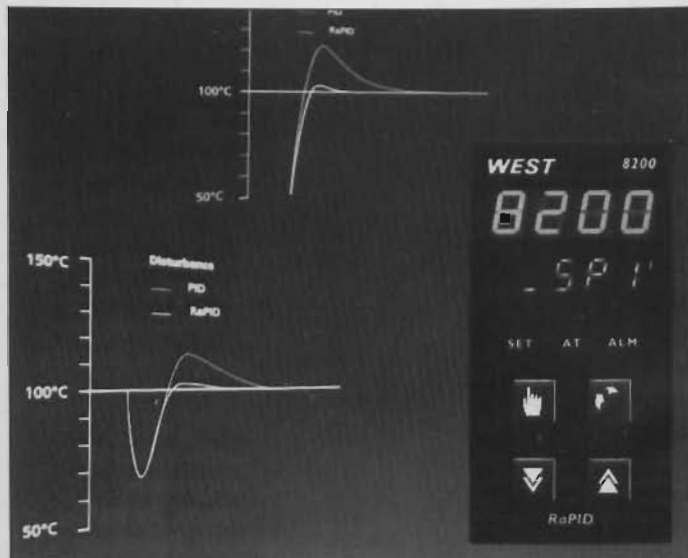
The new West Instruments' 8200 RaPID range of temperature controllers from Manotherm Ltd have been designed with a unique fuzzy logic algorithm which dramatically reduces overshoot and improves settling times on start-up, setpoint changes and disturbances by 70%, without complicating set-up usage.

The fuzzy-logic based algorithm enhances the traditional PID function, continuously rebalancing the P, I and D control building blocks on line. Instead of learning from an event and reacting after it has happened (which is how all self-tuning PID controllers work), the RaPID controllers can react as an event occurs, thereby improving the quality of control

and speed of response in any application.

What's more, all the user needs to do is run pre-tune and/or self tune in the normal way and then press the RaPID buttons on the front of the controller. There is no complicated tuning of fuzzy parameters or scaling of variables. RaPID does it all itself.

Comparing RaPID controllers with the latest self-tuning PID controllers, RaPID outperforms the PID versions every time. RaPID also overcomes the traditional PID trade-off; engineers generally have to decide whether to tune for a fast set-point approach but put up with lots of overshoot, or reduce overshoot but put up with a slow approach. RaPID can



West Instruments' new 8200 RaPID range of temperature controllers from Manotherm Ltd.

achieve a fast approach and still minimise overshoot.

The RaPID controllers are available in 1/8DIN (the 8200) and 1/4 DIN (the 4200), and offer full functionality, including auto/manual, self-tune

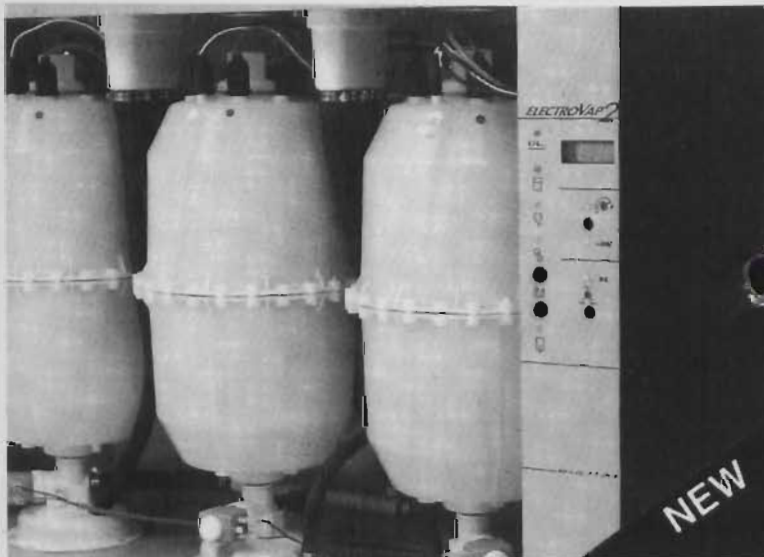
and pre-tune, relay/SSR, alarm, RS485 communications, programmable dual displays and security locking.

Contact: Bob Gilbert, Manotherm. Tel: 01 - 452 2355.



From 0.2 kg/h to 90 kg/h

The New Electro-vap² steam humidifiers



- New improved Electronics
- New improved Cylinder Design
- New improved Proportional Control
- New improved Performance

- Very competitive prices
- Ex-stock delivery
- Disposable and cleanable cylinders
- Uses any water quality 30 to 1200 µS/cm
- New two year warranty
- Dedicated spares & support engineers

Contact the JS Hotline 0044 1903 850 200 for details!



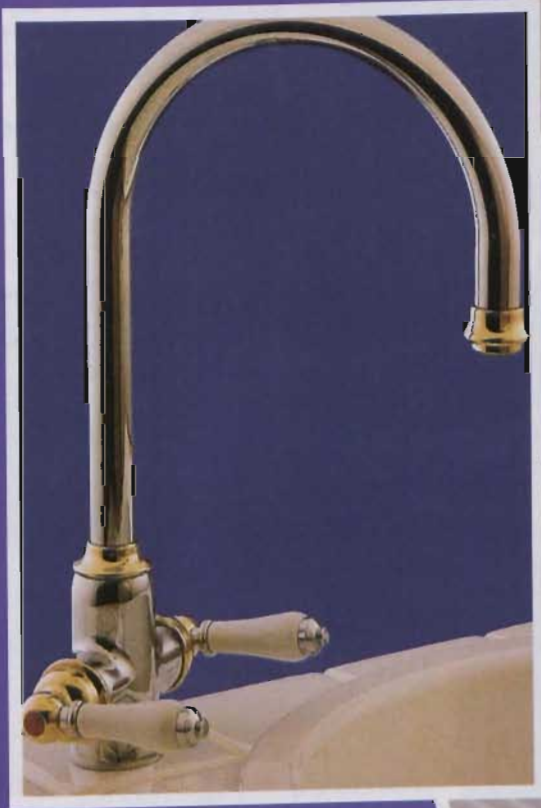
JS HUMIDIFIERS Rustington Trading Estate,
 Artex Avenue, Rustington, West Sussex, BN16 3LN, UK.
 Telephone: 0044 1903 850 200 Fax: 0044 1903 850 345



Tantofex

*Ideal
Standard*

Stylish Taps & Mixers



B.J. Caraher (Distributors) Ltd.

Dorpin House, 29 Belfast Road, Saintfield, Co
Down. BT24 7EP.

Telephone: Saintfield 511071.

Fax: Saintfield 510921

Published by ARROW@TU Dublin, 1995

TRADE NEWS

IDHE Student Diplomas

The IDHE held its annual student diploma presentations in the Engineers Club in Clyde Road earlier this month.

The well-attended meeting was also treated to an excellent technical presentation on "Vokera" gas-fired systems and combination boilers by Claudio Guglielmucci of C R Claudio (Vokera) Ltd. In a most entertaining talk, Mr Guglielmucci highlighted the growth in the use of combination boilers in the UK where 25% of the market is now combis.

This contrasts starkly with the situation here, where – because of water pressure problems – there is almost a total ban on the use of combis. Restrictions on the connecting of the system and combi boilers directly to the city water supply is, according to Mr Guglielmucci, forcing the heating trade in Dublin in particular to use lower efficiency boilers and boilers which in reality use more water than combis.

The presentation of diplomas to the successful students was made by IDHE Chairman, Barry Kenna for the IDHE and by Derry Cotter, Assistant Director of the DIT in Bolton Street College of Technology. The J J Sampson & Sons Ltd plaque and award for the best student was presented by David Harris of the IDHE to Donal Hartnett.

AAF-McQuay Acquires APV plc Refrigeration

AAF-McQuay Inc – one of the world's largest manufacturers and marketers of HVAC and air filtration products and systems – has acquired the UK and Ireland refrigeration and freezer businesses of APV plc (APV). The acquired business will operate as J & E Hall Ltd under the existing management and Noel May and his team in Dublin are looking forward with enthusiasm to benefitting from the synergy and dynamism which will result from the change.

Based at the present site in Dartford, Kent, England, for more than 200 years, J & E Hall Ltd is one of the world's leading integrated suppliers of industrial refrigeration and freezing products, systems and services. Its freezer business is internationally recognised under the Jackstone Froster brand.

J & E Hall Ltd currently operates five manufacturing facilities in the UK, is ISO registered and employs approximately 650 people. In addition to designing, manufacturing, installing and servicing complete industrial refrigeration systems, J & E Hall Ltd is a world leader in energy-efficient, single-screw compressor technology, which it has developed specifically for refrigeration and air conditioning applications.

McQuay International, the commercial air conditioning division of AAF-McQuay, also manufactures a unique, oil-free, refrigerant-lubricated, single-screw compressor. The acquisition of J & E Hall Ltd will allow McQuay to accelerate the planned expansion of its single-screw water chiller product line.

Contact: Noel May. Tel: 01 - 295 0950.

Stopcock Manifold System

The new Talbot stopcock manifold system is designed specifically for installing water service connections to apartment blocks, flats, shopping centres, housing estates, farm yards, etc. The unit has application in any area where multiple water services (any number up to 18) must be installed.

It is claimed to be more cost-effective than using conventional

brass saddles and stopcocks and to be more time effective.

The Stopcock manifold can be supplied with a 2" inlet so that only one tapping is required from the watermain.

It is available with a variety of outlets on each stopcock, including a water meter coupling should a meter need to be installed. Each stopcock has its own shut-off facility.

Contact:
Mark Brady,
SW Carthy & Son
Ltd.
Tel: 01 - 450 8046



The new Talbot stopcock manifold system from S W Carthy & Son

BTU Woodbrook Results

President's Prize – Tony Gillen (12) Hermitage, 45pts

Class 1

1st – John Lawlor (10) Blainroe (41-3) 38pts

2nd – Des Prendergast (10) Old Conna (38-1) 37pts

3rd – Joe Weafer (9) Edenderry, 35pts

Class 2

1st – Tony O'Leary (13) Skerries, 37pts

2nd – Jim Nolan (13) Edmonstown, 36pts

3rd – Gerry Phelan (15) Old Conna (36-2) 34pts

Class 3

1st – Terry Maher (21) Baltray (41-1) 40pts

2nd – Dan Chambers (20) Beaverstown (38-1) 37pts

3rd – Brendan Stack (22) Royal Dublin, 36pts

Visitors

1st – Eamon Cullen (10) Rush, 38pts, B9

2nd – Frank Quigley (18) 38pts

Front 9

1st – Noel McKeon, Newlands, 20pts



Completing his final quality inspection of the new foam trailer, manufactured by Apex Fire Protection is Steve O'Connell, Director of Regional Sales & National Services. This 1800 litre foam trailer is fitted with four foam inductors which are capable of working in unison or individually. The customer was Irish Shell, who will use it to protect Shell's oil jetty at Limerick.

TRADE NEWS

2nd – Michael Hanna, Bray, 19pts
 Back 9
 1st – Eamon Vickers, Rush, 20pts, B3

2nd – Ray Byrne, Old Conna
 Matchplay Plate
 Winner – Tony Gillen



Left: BTU Woodbrook – Dan Chambers (2nd, Class 3) with BTU Captain, Dave Sampson.



Top right: BTU Woodbrook – Tony Gillen, Winner of the President's Prize, with BTU President Garvan Evans

Right: BTU Woodbrook – Tony O'Leary (1st, Class 2) receiving his prize from BTU Captain Dave Sampson.



BTU Woodbrook – Des Prendergast (2nd, Class 1) receiving his prize from BTU Captain Dave Sampson.

York Acoustic Enclosures

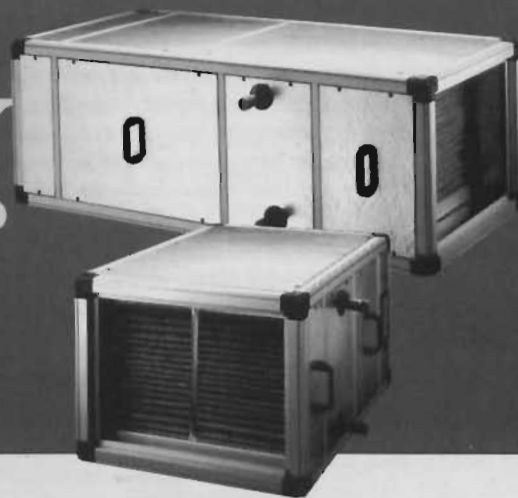
To achieve very stringent noise levels required on various sites, York – in conjunction with Conabear Acoustics – has developed the Phase 5 Acoustic Kit (see photograph).

The acoustic package comprises inlet silencers, discharge silencers with splitters, a mounting base and acoustic floor, hinged acoustic access doors to control panel and hinged doors to compressors.

All the panels on the acoustic enclosure are manufactured with the outer casing being 1.6mm galvanised sheet steel with an

THE Quality.

AIR HANDLING UNITS
 Only from Roof Units Group



Viking Series 90 is the result of years of research and development to produce what is probably the finest air handling range available.

Designed around a completely new frame system, Viking brilliantly solves stacking, joining, hanging and base frame requirements. And the smooth radiused profile and purpose built corners make the units so much more comfortable to handle.

VIKING

Smooth double skinned panels create an elegant and attractive appearance and special fasteners allow instant access. As for sealing, the system is so effective that it exceeds the HVAC Guide to leakage testing by a factor of ten.

The Viking range includes Slimline, Minislim, Mini Direct, Mini Belt Drive and Modular as standard and of course specials can be made to order.

market led-quality driven

Viking Series 90 from Roof Units Group - unsurpassed for quality of product, quality of service, nationwide distribution and competitive pricing.

ROOF UNITS GROUP
 A DIVISION OF AIR MOVEMENT GROUP

TRADE NEWS



An example of the Phase 5 Acoustic Kit developed by York ACR in conjunction with Conabears Acoustics.

inner facing of 0.8mm perforated galvanised sheet steel. Each panel is 100mm thick and filled with acoustic infill, Rockwool RW45A with a woven screen facing.

The acoustic floor of the package is manufactured from 1.6mm galvanised sheet steel with the same acoustic infill and is provided with drain holes while the acoustic doors on the

control panel are hinged and are 50mm thick, double-skin and fitted with viewing panels. The

acoustic packages have been used on projects such as Swords Laboratories, Allergan and AT & T, Bray to achieve very stringent noise requirements.

The acoustic packages are delivered to site in knock-down form and then assembled by qualified personnel. Working drawings for each project are available for approval prior to installation as is any technical back-up required in the calculation of the noise data.

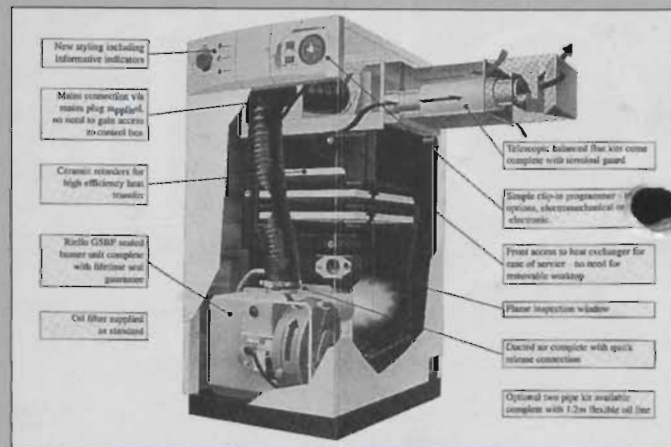
Contact: Austin McDermott/Pat Byrne.

Tel: 01 - 456 9424.

Potterton Statesman Make Oil Option Even More Attractive

The Potterton Statesman is an extremely-efficient boiler designed to comply with EC Energy Efficiency Directives and Standards. Independent tests show that it will operate at between 88% and 91% net efficiency (at full rate).

Potterton Myson is so confident of the reliability of the product that it is offering a 2-year warranty with each Potterton Statesman, and an option for the householder to take out longer protection through a special insurance scheme.



The Potterton Statesman from Potterton Myson.

The Statesman range consists of eight models offering outputs between 45,000 Btu/h and 100,000 Btu/h with larger models to be launched in the near future. All the boilers are easily converted from conventional flue to balanced flue.

Extremely compact at 565mm deep and engineered to fit exactly within kitchen units, all maintenance can be carried out by front access.

From the installer's point-of-view, the boiler is much easier to wire up because all the wiring is external, while the programmer is a simple plug-in kit.

Contact: Vincent Broderick. Tel: 01 - 459 0870.

Eamonn Browne — An Appreciation

The recent death of Eamonn Browne has left a void within the building services sector — and especially the consulting arena — which cannot be filled. Not that one would want to try.

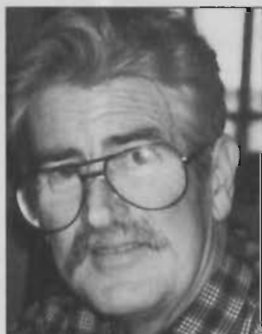
Eamonn was a larger than life character in that, apart from his professional capabilities, he was a very warm, genuine and caring person. He was the perfect gentleman in all his dealings, his tremendous sense of humour concealing the very serious nature of his long-time illness. There were many who had dealt with Eamonn for years without ever knowing that he was on dialysis while he also underwent his triple by-pass and hip replacement in the same private way.

Eamonn's professional career spanned an era which saw massive changes in the working environment and the very nature of the industry itself. He always embraced these changes with the same enthusiasm and lust for life that he demonstrated in every other facet of his day-to-day living, his work at home and abroad encompassing a pioneering spirit which served as an example to others.

He was a friend to work colleagues, business associates and clients alike but, more than anything else, he will be remembered by everyone who came into contact with him as an inspiration for living.

His untimely death at the early age of 54 is deeply regretted by all who knew him. His wife Stasia; sons Paul and Eoin; daughters Carol and Catherine; and his brother and sisters will most of all miss the sense of devotion and commitment he had to his entire family.

Ar Dheis Dé go raibh a ainm.



Eamonn Browne whose recent death is deeply regretted by all sectors of the Irish building services industry.

Interbuild '95 – Products to Watch!

A milestone in the construction industry has been celebrated this year with the 100th birthday of Interbuild, the British building exhibition. Originally the brainchild of a young Victorian architect, Greville Montgomery, the first exhibition was held in 1895 at the Royal Horticultural Hall in London. The wheel has turned full circle and this building in Islington is now the home of the Building Design Centre.



Vasco Viola Accessories

The Montgomery Network, as it is known, still organise Interbuild and the company is now involved in organising some 200 exhibitions worldwide.

From some 90 exhibitors in 1895, Interbuild has grown to encompass

over 1,200 in its centenary year. During the six days of the show, over 100,000 trade visitors attended the exhibition. Our report brings you a few of the interesting products that caught the eye of *BSNews*.

Seeflo were one of the success stories of Hall 1 with their patented Overfloat. This alternative to the usual WC overflow system is fitted to the siphon inside the toilet cistern. Should the water level rise too far, the Overfloat is raised and, like a mousetrap, the spring-loaded cover is released, allowing the water to overflow down the siphon. The clever part which has won the hearts of the water authorities is that the siphon no longer works and so the user cannot ignore the problem.

Wedi showed their "Tilebacker board", made from extruded styrofoam and reinforced on both sides with glass fibre fabric. This may be cut to shape and fixed to any surface with glue or mechanical fixings. The boards come in five thickness, from 6mm up to 50mm, in 2500mm x 600mm sheets. They can be tiled or plaster finished. Prefabricated pipe covers are produced in 2500mm lengths. Wedi claim tilebacker boards are ideal cladding for bathrooms, showers, pipe ducts and bath panels.

Cesame claims to be the second largest sanitaryware manufacturer in Italy and its stand showed a wide range of different bathroom styles. New for the show was a 59cm basin in the Deco range, designed for the



Grundfos UPE 2000 pump

smaller bathroom and with this in mind, the company launched Pianilavabo – a neat corner wall unit with a ceramic top in a choice of colours and with an underpinned basin in white. The unit can be floor or wall-mounted and has a stainless steel towel rail and storage shelf.

elm leblanc launched the new GVM 7 range of wall-hung combi boilers. These have been developed to offer electronic ignition and control. A new move here is electronic control of the gas valve, allowing modular operation of an atmospheric gas burner and offering outputs across the range from 6kW to 28kW. An improved layout gives better access for installation and servicing, making life easier for the plumber.

The **Villeroy and Boch** stand showed new tiles with leanings towards the popular rustic look. Their new range "Camargue" had decorative tiles and listellos in blue, rose or green, coupled with plain tiles in soft colours with square or octagonal shapes which give a hand-crafted look, yet offer a huge choice of patterns and effects for the bathroom or kitchen.

Grundfos exhibited its UPE 2000 pumps with electronic control. These maintain a constant pressure in the heating system by altering the pump speed to cope with demands. Grundfos has a 2-way, hand-held telecommand controller for the system which can be used to download information on hours run; operating pressure and flow; RPM;

kW used; and water temperature. A hand-held printer works with the controller and provides a hard copy for the site engineer.

Worcester Heat Systems have moved the floor-standing combi step forward with their Highflow 400 boiler. This uses a 60 ltr onboard primary heatstore that Worcester say provides 18 litres/minute of hot water at a 35°C rise.

Although quite large at 600mm by 600mm by 860mm, the Highflow 400 can be integrated with standard kitchen units. With outputs from 9 - 24kW, it is suitable for heating and supplying the hot water for a wide range of housing.

Vasco made a move towards making better use of the limited space in the bathroom. Their Viola range of



Cesame Pianilavabo Basin

fronted convectors come complete with top grilles and side panels. Both of these ranges are suitable for high-pressure hot water systems, being 100% pressure tested to 10.5 bar during manufacture, for an operating pressure of 7 bar. All have a 5-year guarantee from the date of installation and come ready decorated with a new 3-way coating process for a superior, corrosion and damage resistant surface finish.

Hydropath claims an advantage for its patented Hydroflow system to prevent scaling in pipework, which uses ferrite technology to create an electric field in the liquid,

rather than the pipework, so it is not reliant on liquid flowing in the pipework to make the system work. Subject to conductivity, Hydropath says that the product will descale a whole domestic system – even working on indirect water supplies – when fitted to a direct water pipe.

Newteam launched the new NT2500 power shower. This is a low-voltage, integral, manual mixer shower which is supplied complete with a transformer. The power of the shower

can be adjusted by a control on the casing which changes the flow rate by altering the speed of the pump. A fixing cradle is included so the NT2500 can be installed either recessed or surface-mounted. The shower comes complete with a riser rail and the new 5-function Blitz handset which features a pinclean system for beating limescale.

Vaillant introduced the new Turbo-Max combi at the show. This is a complete redesign of the combi, with the accent on accessibility. Everything can be reached and even removed from the front and the cutaway model on display certainly gave the installer a lot more room to access the parts. The powered small diameter flue could be run vertically or horizontally. The control unit and programmer were on a panel at the front of the unit which hinged down for easy access. This combi offered electronic gas modulation of the atmospheric burner through control of the gas valve.

A novel idea that caught our eye was the **Tapoff** electronic mains water stoptap. This can cut off the mains cold water supply at the flick of a switch or by a remote control switching device, frost stat or time controller. Ideal when leaving the house empty, the water can be programmed to turn itself off and to come back on when the occupier returns.



De Longhi Ultimate Radiators

bathroom radiators have flat vertical panels with gaps in between. A wide selection of accessories to match these gaps can be bolted on from the back. Mirrors fitted this way are claimed not to steam up, but we voted for the robe hook that kept the dressing gown warm.

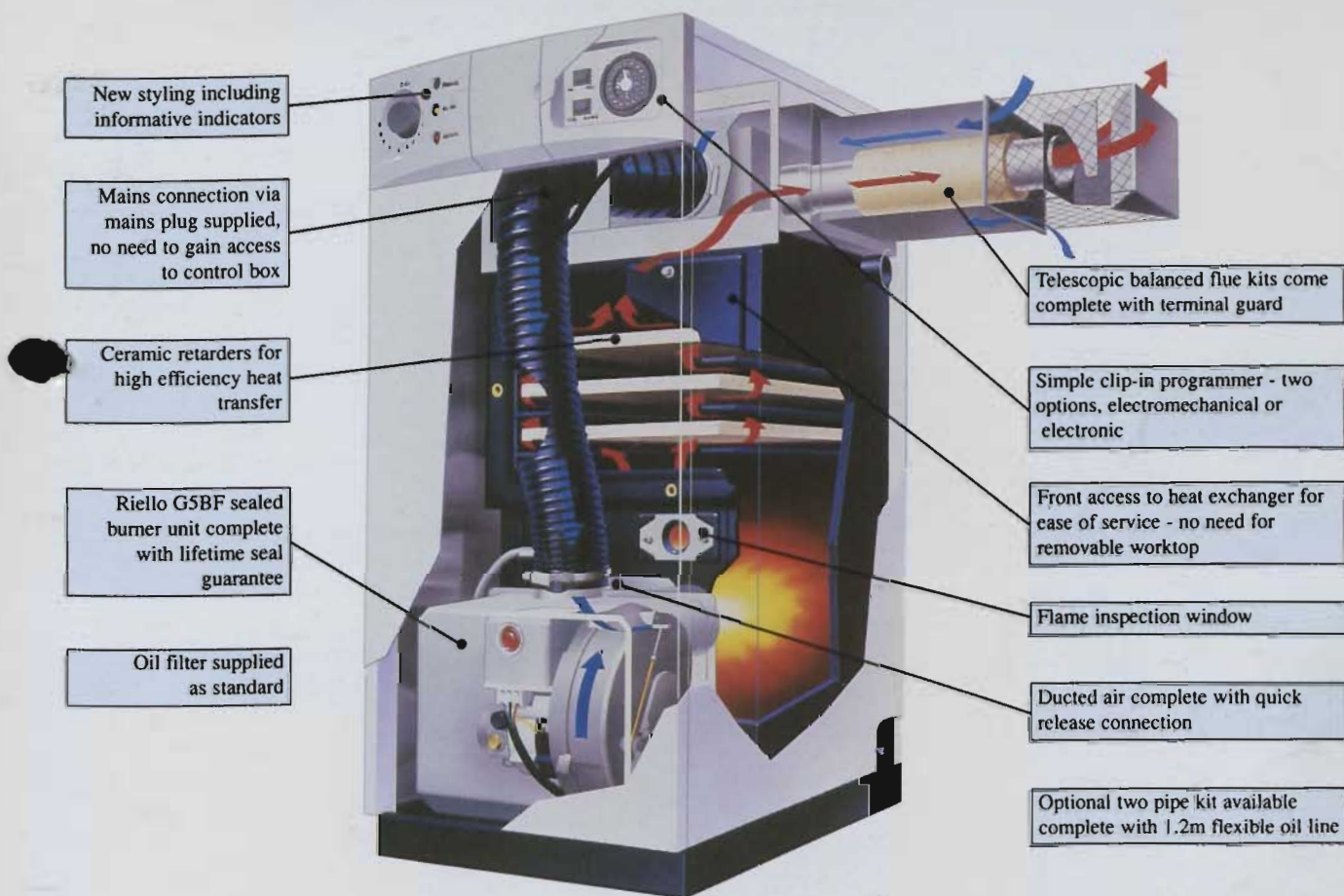
De Longi Radiators showed Ultimate, a low-cost, high-quality range available as single or double convector radiators. Further upmarket, their Linear luxury smooth



Newteam NT2500 Low Voltage Power Shower

POTTERTON STATESMAN OIL BOILER

NEW



STATESMAN

POTTERTON MYSON

Key Features of the Statesman

- Outputs from 45,000 to 100,000 Btu/h
- Front Access
- Two Year Warranty
- Reduced Sound Levels
- Compact: 565mm Deep
- Complies with European Directives and Standards

BELGARD ROAD, TALLAGHT, DUBLIN 24. TEL: 01-459 0870. FAX: 01-459 0880.



MANOTHERM LIMITED

THE CONTROL CENTRES



THE WORLD'S MOST ADVANCED 1/16 DIN PROCESS CONTROLLER

6100 - KEY FEATURES AT A GLANCE

- * Dual four-digit display (10mm top, 7.5mm bottom)
- * Auto/Manual, Self-Tune & Pre-Tune, Ramping Setpoint.
- * Universal input and power supply (single jumper for input type)
- * Choice of relay/SSR or linear output product (two base builds)
- * Additional plug-in outputs.
- * Comprehensive alarm strategy - AND/OR & loop alarm.
- * No-battery design (E² technology - 100 years retention)
- * IP54 rating (IP65 pending test)
- * RS485 option (selectable Baud rate up to 9600)

PROCESS CONTROL



WE CAN OFFER:

- Power Supplies
- Temperature and Resistance to Current Transmitters
- Isolation Amplifiers
- Trip Amplifiers
- Controllers
- Digital-converters
- Analog-converters
- Dividers
- Linearisers
- PC & PLC interface
- Plug-in Modules-Eurocards

PR Electronics provide innovative products to solve industrial problems.

MANOTHERM LTD.

ONE STOP SHOP FOR INDUSTRIAL INSTRUMENTS



For a Free Technical Brochure contact
Manotherm Ltd - The Control Centre:

4, Walkinstown Road, Dublin 12. Tel: 01- 4522355. Telex: 93388. Fax: 01- 4516919.
10, Knockbracken Park, Belfast BT6 OHL. Tel: 0232-491966. Fax: 0232-491275