

Supporting Research with a Research Repository: The View from the Dean's Office

Southern Miss
Institutional Repository Conference
2020

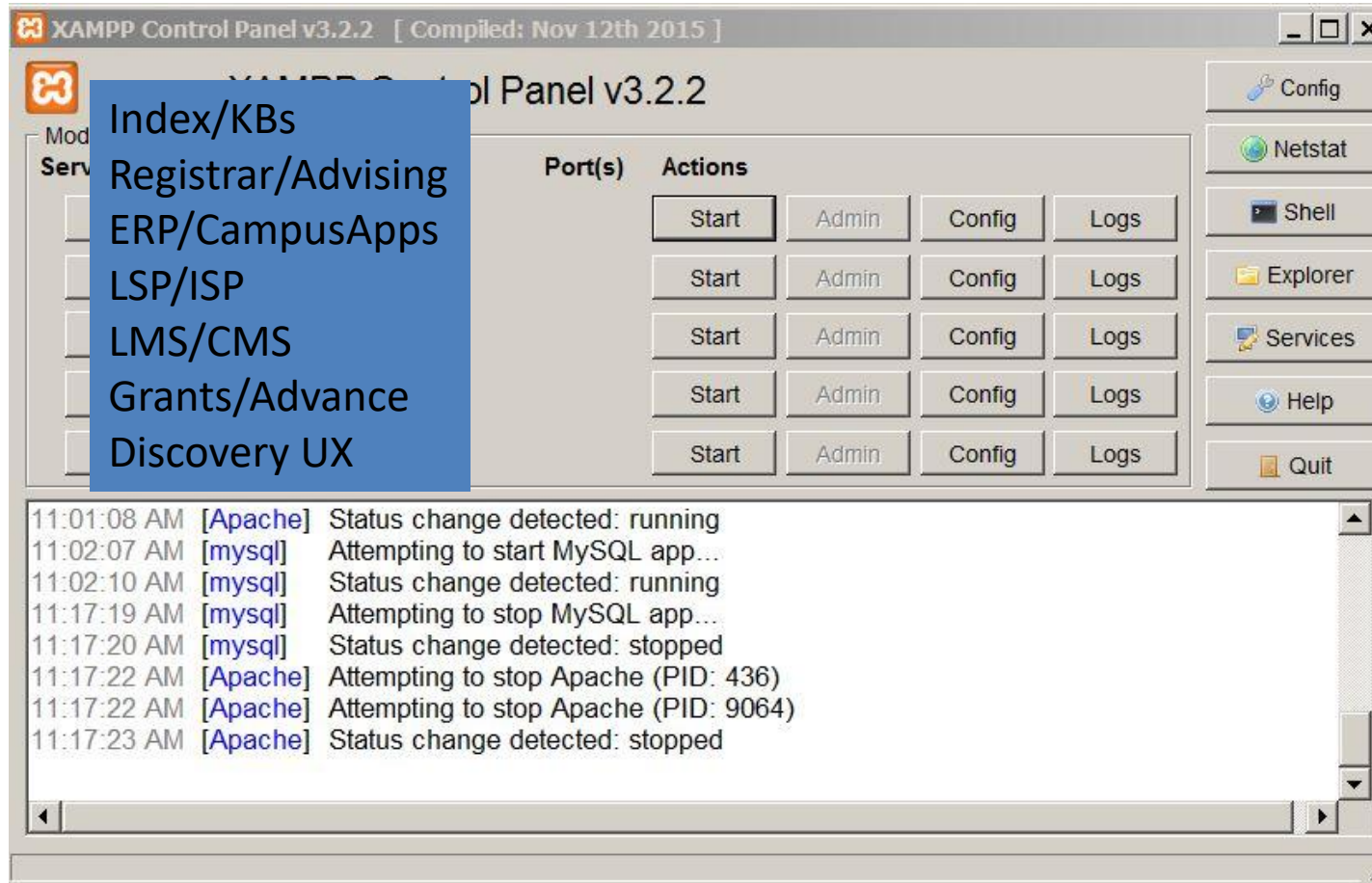
Ken Herold, Associate Dean and Deputy University Librarian
Adelphi University NY

Desirables

- Interface and Operations: the distance is too far from performance to configuration
- Intelligence: too far from both human researcher and machine resources
- Identity and Integration: personalization is not an optional feature

Conclusion: Integral processes are critical; persons and actions are unitary, so research workers and their works go together

INTERFACE AND OPERATIONS



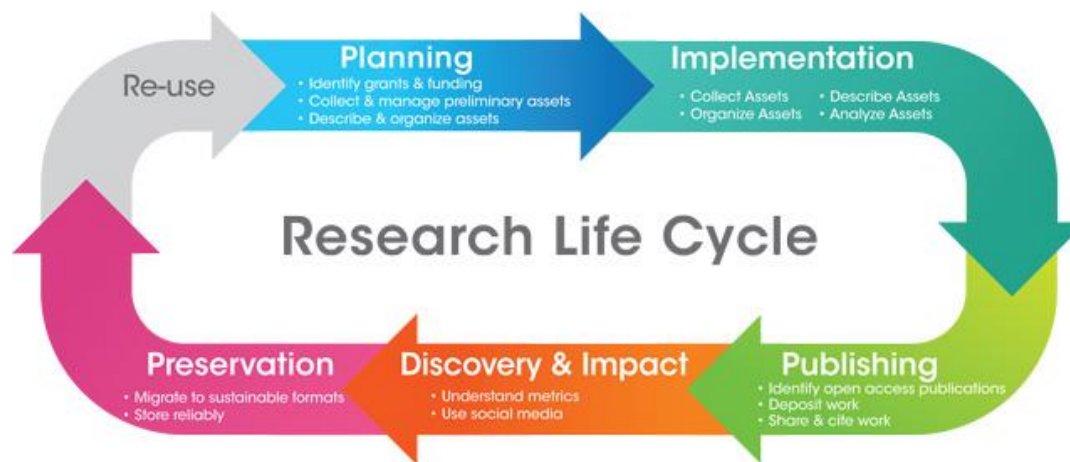
...wanted this in 2017

INTELLIGENCE

A matter of intellectual work and property

ADMINISTRATORS need to justify \$\$\$:

- Recommend high cost resources
- AI trend? Its scope?
- Feedback reports to instructors
- Pay for APIs, integration



STUDENTS want ease and success:

- Give me my readings
- What are my classmates finding?
- What am I required to do?

FACULTY want results:

- Show my scholarship
- Show student usage in my courses
- Update my c.v.
- Show grant opportunities
- Show collaborations

IDENTITY AND INTEGRATION

Personalization is key and linked to campus roles

Students/Faculty/Admins all want specific and known views and results

Balancing data security with robust accessibility

All devices, all the time

ADELPHI UNIVERSITY moodle SOC 270-001 - Spring 2016: Ethnicity in...

Search courses

My home Events My Courses This course

SOC 270-001 - Spring 2016

Calendar for May 2017

SOC 270: Ethnicity in the United States
Welcome!

- Upload your final here
- Final - Instructions
- Announcements

Browse Research and Scholarship [Follow](#)

- [Research unit, center, or department](#)
- [Journals and peer-reviewed series](#)

The repository is a service of the Adelphi University Libraries. Research and scholarly works by the university community are showcased.

Search Faculty Profiles:



BOARD OF TRUSTEES - DECISION ITEM - GOAL

To ensure that the University is providing the most *modern digital software and services platform* available

for the *provision and delivery of scholarly content* in higher education,

University Libraries has engaged a *multi-year effort* to renew its current automation system *within existing and forecast funding*

BOARD OF TRUSTEES - DECISION ITEM - METHOD

Vendors were invited to virtual and on campus presentation opportunities based on published market and evaluation reports identifying industry leaders.

Employees across the Libraries' units and also stakeholders across campus were invited and participated in multiple rounds of product demonstrations.

Vendors were asked to provide information about print, non-print, and digital formats of scholarly content, and their acquisition, licensing, circulation, cataloging and metadata handling, analytics and reporting, copyright and fair use, course utilization, research data capabilities, consortium and outside resource sharing, patron personalization and privacy, discovery tools, and grants support features.

DISCUSSION

Thanks!

kherold@adelphi.edu

Ken Herold
Associate Dean of Libraries,
Deputy University Librarian

Adelphi University