

2015

Collecting Globe Data in Pascagoula Watershed

Sherry S. Herron

University of Southern Mississippi, sherry.herron@usm.edu

Follow this and additional works at: https://aquila.usm.edu/fac_pubs

 Part of the [Science and Mathematics Education Commons](#)

Recommended Citation

Herron, S. S. (2015). Collecting Globe Data in Pascagoula Watershed. *Mississippi Academy of Sciences*, 2014.

Available at: https://aquila.usm.edu/fac_pubs/14861

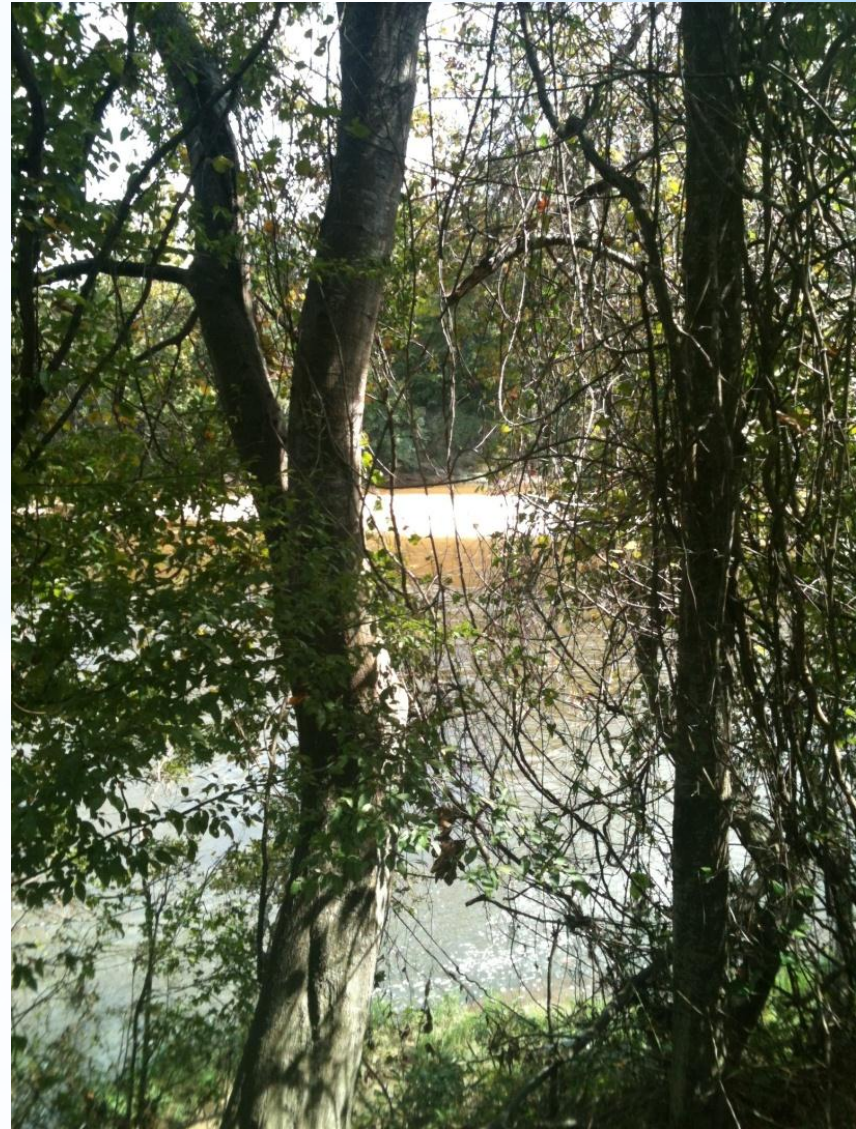
This Conference Proceeding is brought to you for free and open access by The Aquila Digital Community. It has been accepted for inclusion in Faculty Publications by an authorized administrator of The Aquila Digital Community. For more information, please contact Joshua.Cromwell@usm.edu.

Collecting Data in the Pascagoula Watershed

Mississippi Academy of
Sciences 2014

Hattiesburg, MS

Sherry S. Herron and students





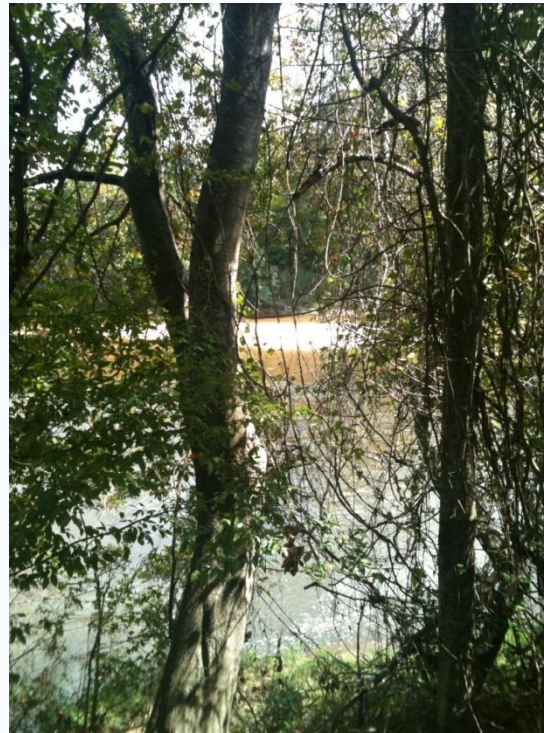
- * Crystie Baker
- * Chris Breazeale
- * Anna Goodman
- * Kim Hardy
- * Veshell Lewis
- * Linda Nix
- * Elizabeth Schlosser
- * Curt Skipper
- * Patrick Stokley
- * Nichole Watkins
- * Aresia Watson

* The Incredible Crew

With essential support from Celia Young, Administrative Assistant;
Carrie Jo Boyce, Graduate Assistant; and Denny Hilton

- * June 1 Class meeting 1
- * June 7-9 Chunky River
- * June 14-16 Leaf River and Black Creek
- * June 28-30 Pascagoula River
- * July 27 Class meeting 2

*Schedule



* Chain Park at Twin Forks Leaf River

* Chunky River June 7-9, 2013

Langsdale Plantation

Dunn's Falls

Stuckey's Bridge

Chunky River Recreation

Chunky River Fish Camp

Langsdale Plantation in Shubuta, MS



Barn swallow nest on porch



300 year old rose bush
Flowering Spanish Moss

There must be quillworts around here somewhere!

Wild orchid



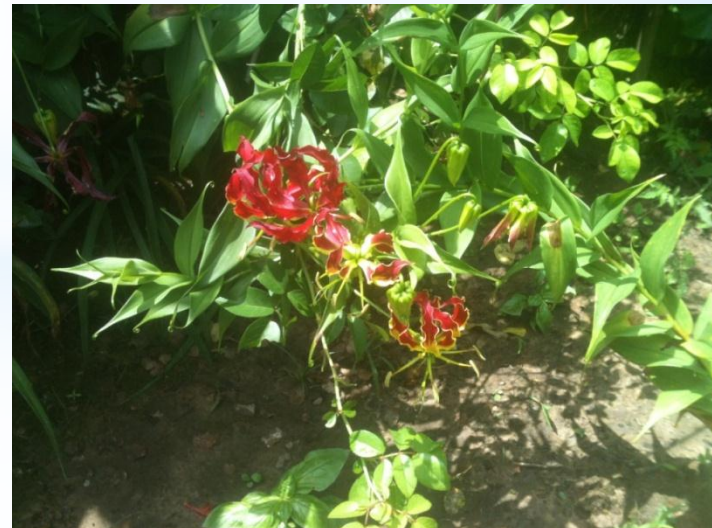
Fringe Tree (Grancy Graybeard)



Garlic



Gloriosa Lily



*Dunn's Falls

Joe McGee, MS Museum Edu

Mac Alford, USM Botanist



*With a lot of help from
our friends

Hazel Alder with Woolly Aphid



Dogwood



Elm with galls



Oak Tree Hydrangea



Resurrection fern

Pleopeltis
polypodioides

Closer...



* Plants at Dunn's Falls

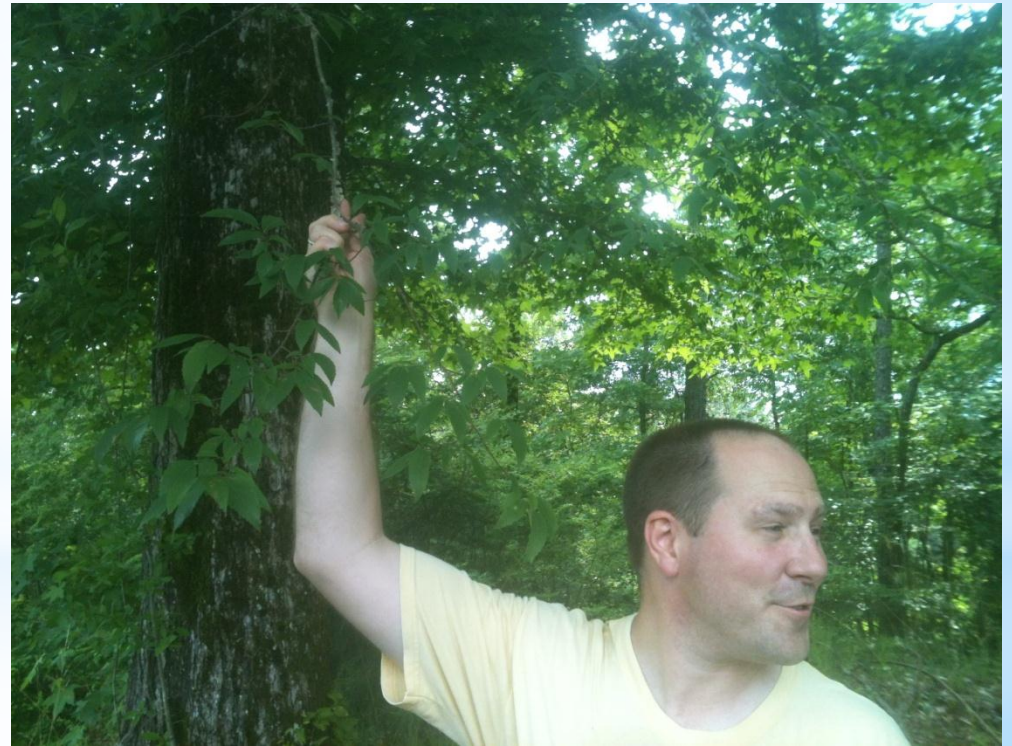
St John's Wort

Hypericum hypericoides



Winged Elm

Ulmus alata



Eastern Fence Lizards

Big toe?!





* The Chunky River
Recreation Campground -
next to the train trestle 😊



* Canoeing and Testing the Water



Lunch at the base of Dunn's Falls



The calm before the storm



*What a beauty!



* Is this supposed to be fun?



* Checking out

*Curt Skipper

East Central Community College Ecology Club

*Kenneth Brett

Langsdale Plantation

*Dr. Mac Alford

USM Botanist

*Joe McGee

MS Museum of Natural History

*Joe and Robin Johnson

canoes and trailers

*Tommy Vincent

East MS Foothills Land Trust

*Thank You!



Leaf River

June 14-16, 2013

Hattiesburg Sewage Lagoons

Paul B. Johnson State Park

Black Creek



* Launch from Hwy 42 Bypass



* Closed plant



* Water quality testing
upriver of Sewage Lagoon

Turbidity



Seining



Dissolved Oxygen



Nitrates



Recording data



Soil pH and Temperature



Soil Color



Soil pH



**Primary Plant species at
water sample site - and
invasive: Chinese Tallow**



**Secondary Plant species at
water sample site: silver
maple**



Rattlebox /Scarlet
Wisteria *Sesbania*
punicea





*Brown water
literally

Shelf Fungus



Fishing Spider





Raccoon and deer tracks

Linda found a Geode!





* Paul B. Johnson State Park

Shocking and Trapping -
Ouch!





* Crystie Baker

MS Museum of Natural Science

* Jeremy McCain

Fisheries Biologist, MS Department of
Wildlife, Fisheries, and Parks (MDWFP)

* Robert Barske

Assistant Manager, Paul B Johnson State
Park, MDWFP

* Joe Pettis

Park Ranger, Paul B Johnson State Park,
MDWFP

* Thank You!

* Pascagoula River

June 28-30, 2013

Merrill Bridge

Josephine Sandbar

Wilkerson Ferry Lake

Pascagoula Audubon Center

Mississippi Sandhill Crane Refuge

Shepard State Park



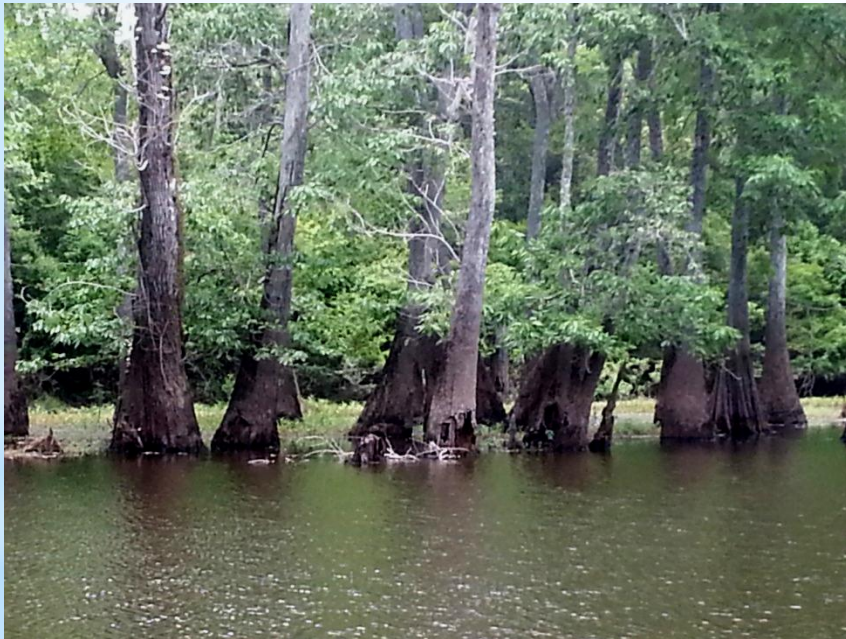
* Becky Stowe with us
at the Merrill Bridge



* Josephine Sandbar

Becky Stowe, The Nature Conservancy

Oxbow Lake & Cypress Trees



* Historic Josephine Sandbar

Eastern Cotton Wood



Invasive Cogon Grass



* Historic Josephine Sandbar

* *Campsis radicans*
(Trumpet Creeper)





* Determining Cloud Cover

Yellow Sandshell
Lampsilis teres



Purple Pimpleback
Quadrula refulgens



* **Josephine Sandbar**

Bird Tracks?



Tunnels in the sand made by...?



Dragonfly eating its' own exoskeleton.



Black River Snake
(aka Black Mamba!!)





* Chimney Swift Tower (cost about \$1,000 to build) A bird couple has come back for about 5 years.



Pascagoula River Audubon Center

* Eastern Glass Lizard

* American Alligator rescued after house was built on nest site.



* Gulf Salt Marsh Snake



Turbidity



Salinity



* Pascagoula River
Audubon Center

* pH



* Dissolved Oxygen



Juvenile Eastern Lubber



* Common Button Ball *Cephalanthus occidentalis*



* Pascagoula River
Audubon Center



*We're off!



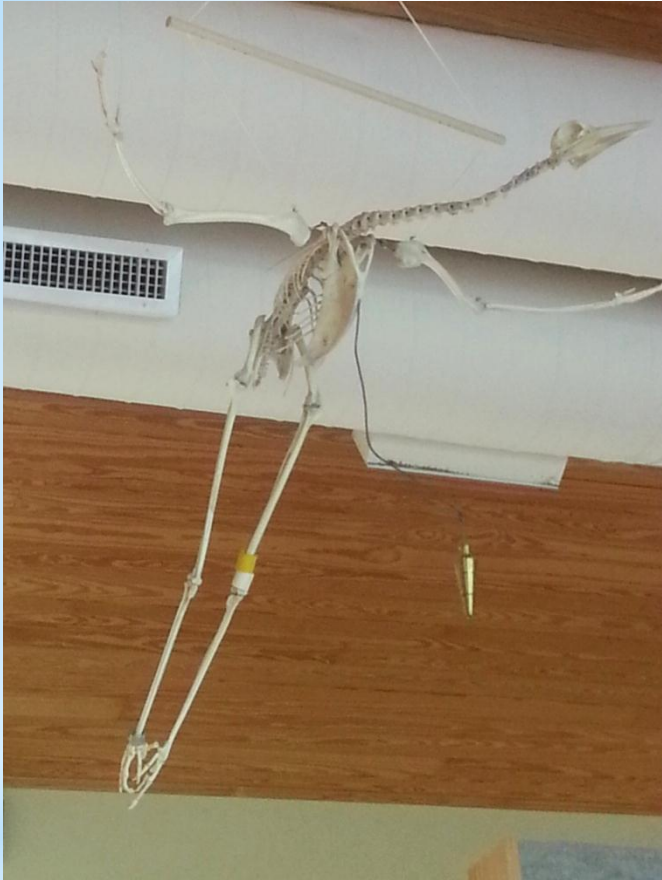
* Osprey nesting heaven



* Well, at least for most of us!

* **Final Destination**

* Sandhill Crane Skeleton



* Sandhill Crane Display



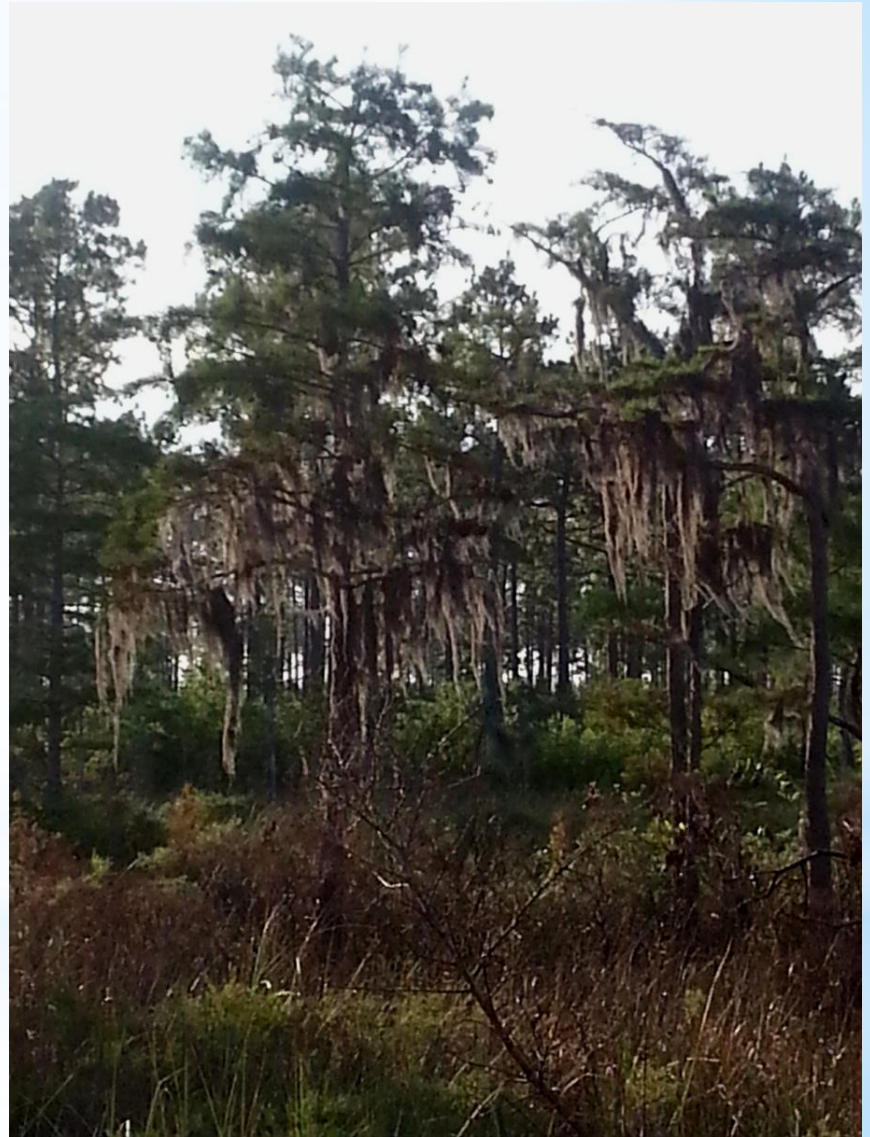
* Mississippi Sandhill Crane
Refuge Center



*Wet Pine Savannah
at the MSCRC

Long Leaf Pine

Pinus palustris



* Pre-Stimulation Sensitive Fern



* Post-Stimulation Sensitive Fern



Button Eryngo

Genus: Eryngium



Pipewort

Eriocaulon aquaticum



Tooth Ache Grass

Ctenium aromaticum



* Showey Rattlebox (exotic;
invasive)



* Xyris ?



Sundew

Genus: Drosera



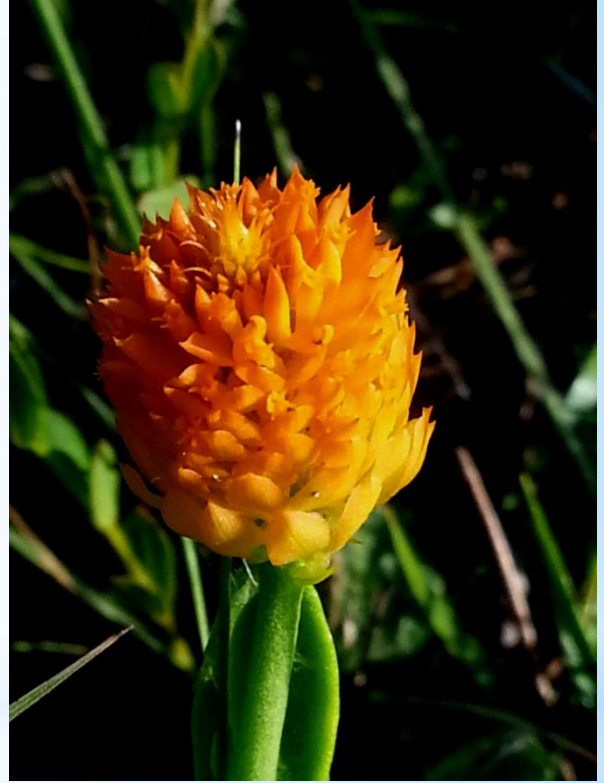
White Top Sedge/
Sand Swamp White Top



Pitcher Plant

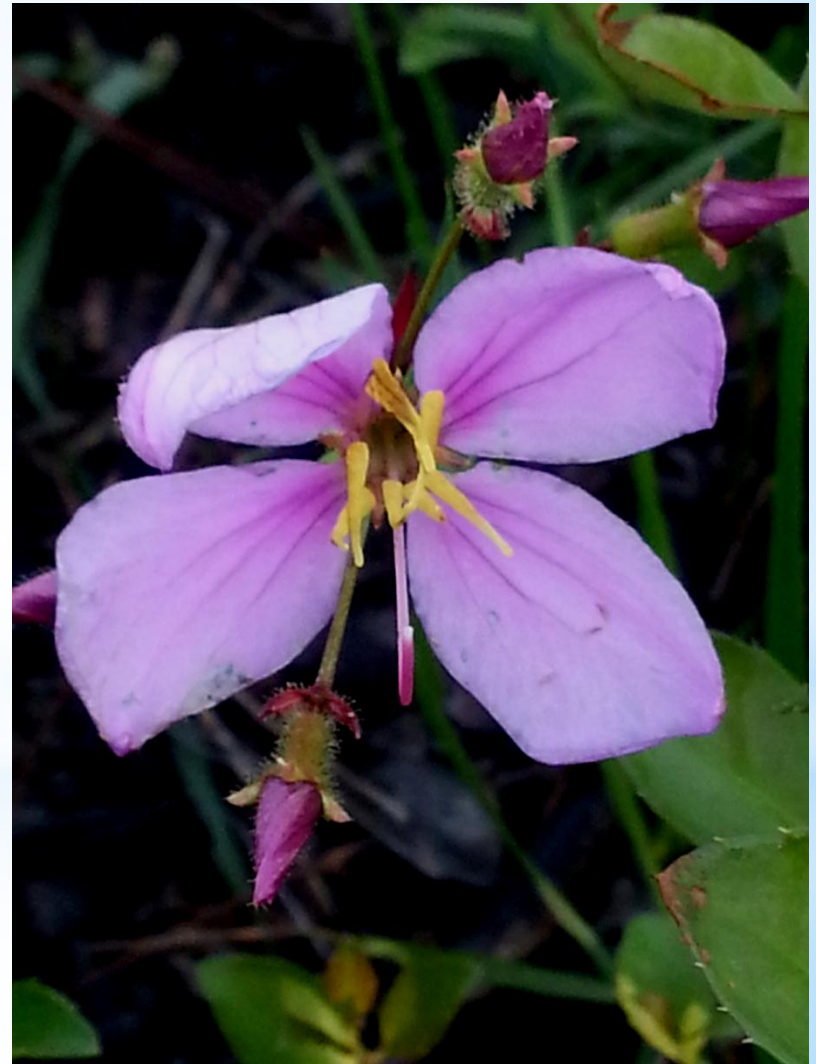
Sarracenia alota

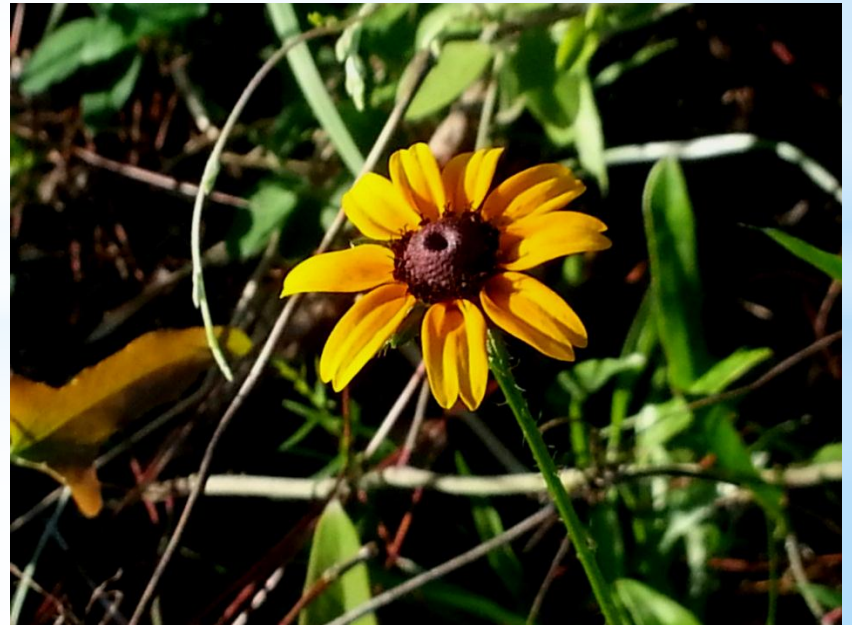
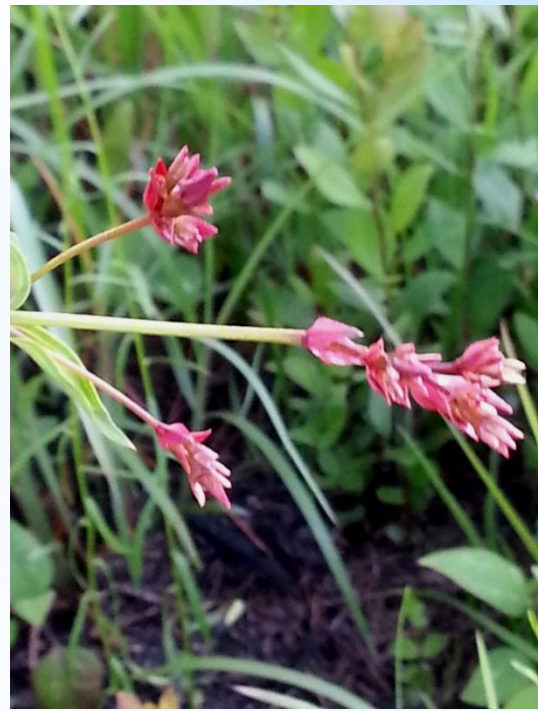




Meadow Beauty

Genus: *Rhexia*

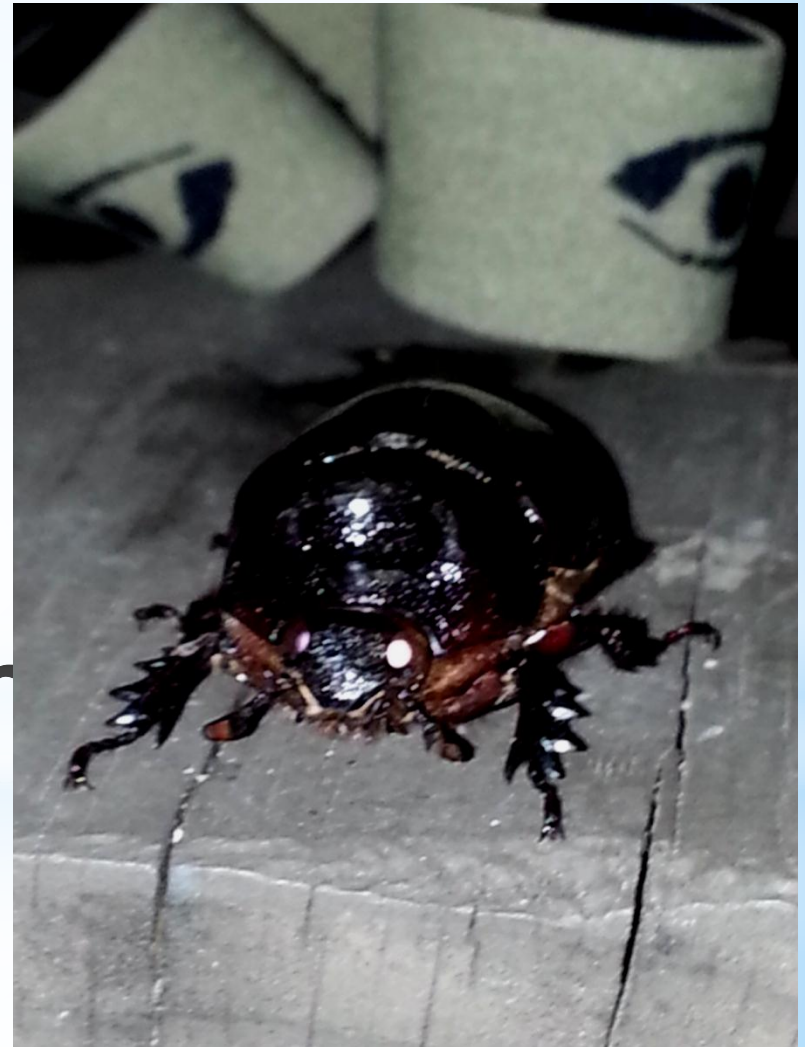




*Yucca



*Female, Strategus Ox Beetle?





* Fontainebleau Trail
at the MSCRC





The Circle of Life Shelf Fungi







Snake eggs destroyed and dug out of ground



*Chris Breazeale

USM MEC and Institute of Marine
Mammal Studies

*Becky Stowe

Pascagoula Nature Conservancy

*Mark LaSalle

Pascagoula Audubon Center

*Melissa Perez

Mississippi Sandhill Crane Refuge

*USM Marine Education Center

*Thank You!