

## Trichodinids (Ciliophora) of *Corydoras paleatus* (Siluriformes) and *Jenynsia multidentata* (Cyprinodontiformes) from Argentina, with Description of *Trichodina corydori* n. sp. and *Trichodina jenynsii* n. sp.

Paula S. MARCOTEGUI<sup>1</sup>, Linda BASSON<sup>2</sup>, and Sergio R. MARTORELLI<sup>1</sup>

<sup>1</sup>Centro de Estudios Parasitológicos y de Vectores (CEPAVE) (CCT-La Plata-CONICET-UNLP), Argentina; <sup>2</sup>Department of Zoology and Entomology, University of the Free State, Bloemfontein, Republic of South Africa

**Abstract.** During surveys of parasites of the pepper cory *Corydoras paleatus* Jenyns, 1842 and sided-livebearer *Jenynsia multidentata* Jenyns, 1842 from Samborombón River, Argentina, *Trichodina corydori* n. sp., *Trichodina cribbi* Dove and O'Donoghue, 2005 and *T. jenynsii* n. sp. were morphologically studied. Taxonomic and morphometric data for these trichodinids based on dry silver nitrate-impregnated specimens are presented. *Trichodina corydori* is characterized by a prominent blade apophysis, the section connecting the blade and central part is short, and the adoral ciliary spiral makes a turn of 370–380°. *Trichodina jenynsii* is characterized by curved blades and prominently-shaped denticle rays that are characteristically extremely long, tapering to thin sharp points in adult specimens. This study is the first formal report of these trichodinids from South America, and the description of two new species.

**Key words:** Ciliophora, *Trichodina*, fish parasites, gill parasites, trichodinids, Argentina.

### INTRODUCTION

Trichodinid ciliophorans have rarely been studied in South America (Martins and Ghiraldelli 2008, Miranda *et al.* 2012, Hashimoto *et al.* 2016). Several authors reported *Trichodina* spp. from Argentina, but formal descriptions were not made (Viozzi 1996, Cremonte and Figueras 2004, Cremonte *et al.* 2005). The only single marine species formally described from Argentinian waters is *Trichodina marplatensis* Martorelli, Marcotegui *et al.* 2008, found on the ctenophore *Mnemiopsis*

*mccradyi* (Mayer) (Martorelli *et al.* 2008). Marcotegui and Martorelli (2009) described *Trichodina scalensis* Marcotegui *et al.* 2009 from *Mugil liza* (Valenciennes), and reported *Trichodina puytoraci* Lom, 1962, *T. lepsii* Lom, 1962, *T. jadratica* (Raabe, 1958) from the same host, and *T. murmanica* Polyanski, 1955, *Diparitella simpex* Raabe, 1959 from *Micropogonias furnieri* (Desmarest) from brackish-waters. Thus far no trichodinids have been described from freshwater fish in Argentina.

The pepper cory, *Corydoras paleatus* (Jenyns) is native of southern Brazil, Uruguay, Paraguay and Argentina, inhabiting rivers, tributaries and standing waters including pools and small lakes. This species is a very good choice for the community aquarium, because it is a hardy, good looking, and peaceful fish.

Address for correspondence: Paula S. Marcotegui, Boulevard 120, No. 1460 e/61 (B1902CHX) La Plata, Buenos Aires, Argentina. Phone: 054-221-4233471; Fax: 054-221-4232327; e-mail: pmarcotegui@hotmail.com

The one-sided livebearer *Jenynsia multidentata* (Jenyns) is a viviparous fish, showing the broadest distribution of its genus, ranging from the Atlantic coastal drainages from the Rio Negro Province (Argentina) to the city of Rio de Janeiro, Brazil (Ghedotti and Weitzman 1996).

The aim of this paper is to report on three species of trichodinids from freshwater *C. paleatus* and *J. multidentata*, and to describe two new species from both these hosts collected in the Samborombón River (Buenos Aires, Argentina). Furthermore, the present communication reports on the morphological characteristics based on silver nitrate-impregnated preparations of these species.

## MATERIALS AND METHODS

Fish were collected from the Samborombón River (Buenos Aires, Argentina) (35°10'39.79"S and 58°15'29.70"W) between April 2013 and August 2013. A total of 32 specimens of *C. paleatus* and 25 specimens of *J. multidentata* were examined. Skin and excised gills from freshly killed fish were examined under a dissecting microscope. Fresh skin and gill smears were made from the hosts. Smears with trichodinids were air dried and Foissner's modifications of Klein's dry silver nitrate technique (Foissner 1992) was used to impregnate the specimens to study the adhesive disc and its elements. The sequence and method of the description of denticle elements follow the recommendations of Lom (1958) and Van As and Basson (1992). Live specimens, stained with methylene blue or orcein, were used for nuclear observations and details of the infraciliature. Examinations of prepared slides were made with a Olympus BX51 microscope and the measurements were made with Image J software. The photomicrographs were taken using a microscope at 100 × magnification.

The description of each species is based on 20 stained and mounted specimens. All measurements are presented in micrometres; minimum and maximum values are given, followed in parentheses by the arithmetic mean and standard deviation. In case of number of denticles and radial pins per denticle, minimum and maximum values are given, followed in parentheses by the mode. The span of the denticle is measured from the tip of blade to the tip of the ray. Body diameter is measured as the adhesive disc plus border membrane. The type and voucher materials have been deposited in the Museo de La Plata, Argentina, Invertebrate Collection (MLP, coll. Nos. MLP000 to MLP000).

## RESULTS

### *Trichodina corydori* n. sp. (Figs 1A–D; 4A)

**Description.** A small to medium-sized, freshwater trichodinid: body diameter, 33.9–42.3 (38.1±2.5); ad-

hesive disc diameter, 27.7–37.0 (32.1±2.6); diameter of denticulate ring, 16.2–23.3 (20.4±1.7); width of border membrane, 1.8–3.3 (2.9±0.4); denticle number, 23–27 (24); number of radial pins per denticle, 8–10 (10); denticle span, 8.0–10.7 (9.2±0.7); denticle length, 2.8–4.7 (3.8±0.6); central zone of adhesive disc dark; blade length, 3.4–4.4 (3.8±0.2). Anterior blade margin strongly rounded, curving into very prominent blade apophysis. Distal margin of blade rounded with blade filling most of space between Y-axes. Distal blade margin with strong curve towards blunt and rounded tangent point. Apex of blade not touching Y+1 axis. Posterior blade margin shallow, becoming deeper towards central part. Section connecting the blade and central part short, but well developed. Central part well developed with rounded tip, fitting tightly into preceding denticle. Central part extending more than halfway to Y-1 axis. Shape of central part above and below the X-axis very similar. Central part width 1.0–1.9 (1.4±0.3). Rays strongly developed, starting more narrow from central part, becoming slightly thicker towards proximal ends. Some rays directed towards center of adhesive disc, some angled slightly anteriorly. Ray apophysis not visible. Ray connection not well developed. Point of ray bluntly and strongly rounded. Ray length 3.5–5.1 (4.2±0.4). Ratio of denticle above to denticle below x axis 0.8–1. Adoral ciliary spiral makes a turn of 370–380°. Macronucleus horseshoe-shaped, elongated, external diameter is 30.7–34.3 (32.5±1.8), distance between ends 6.2–7.7 (7.1±0.6). Micronucleus not observed.

**Type host:** *Corydoras paleatus* Jenyns, 1842 (Siluriformes: Callichthyidae)

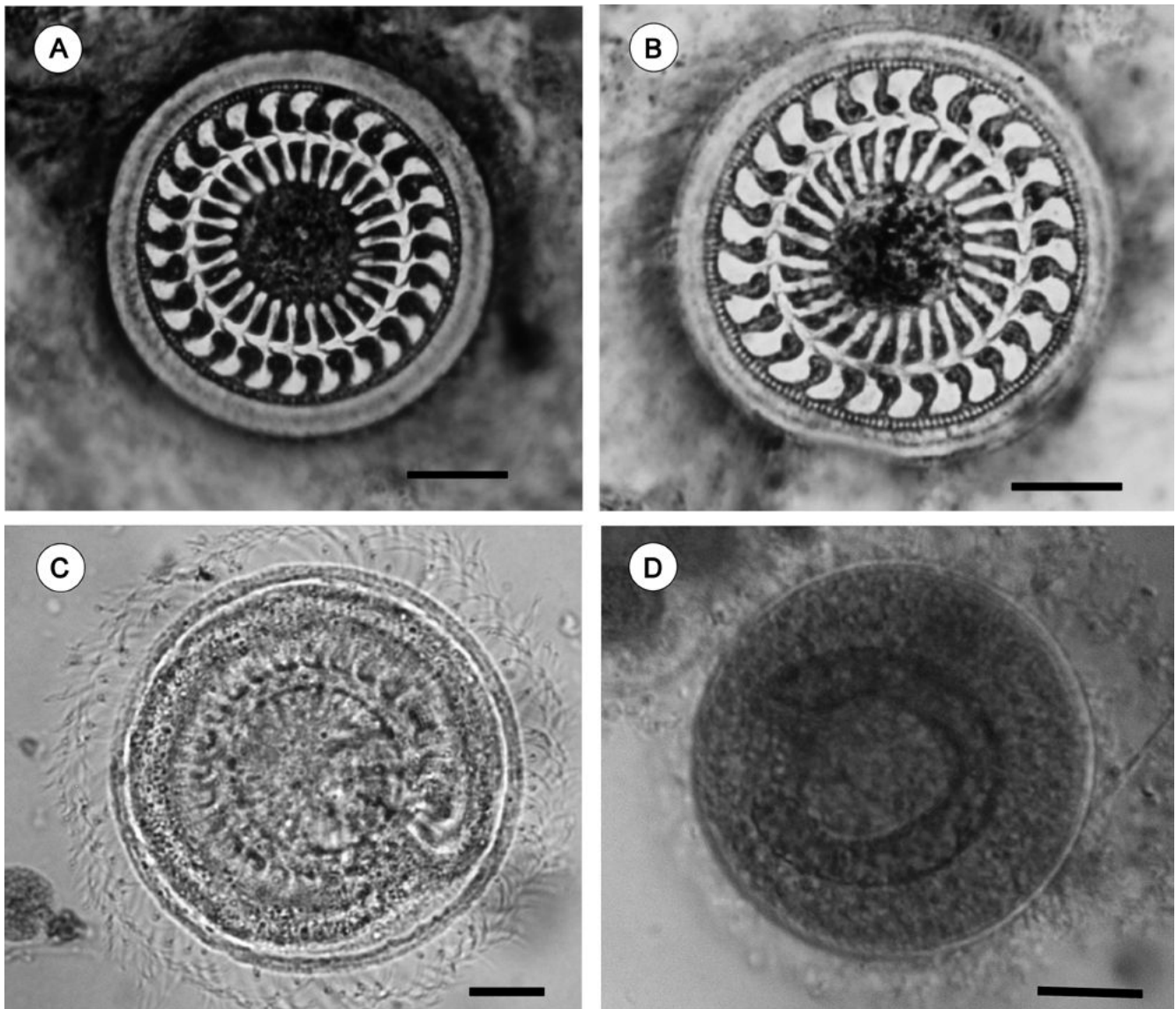
**Type locality:** Samborombón River (Branden), Buenos Aires, Argentina (35°10'39.79"S, 58°15'29.70"W)

**Site of infection:** gills

**Type specimens:** MLP-Pr 98

**Etymology:** The specific epithet "corydori" is coined from the name of host species.

**Remarks.** Morphological features of specimens found in *C. paleatus* agree with typical for Paratrachodina. Thus, denticles have well-developed rays, and are wedged together only by central parts, if anterior projection present, is situated near the base of the blade and is not in contact with the notch in the blade of the preceding denticle (Lom 1958, Basson and Van As 1989). Lom and Haldar (1976) state that the upper limits of the adoral cilia in *Trichodinella* Šrámek-Hušek, 1963, *Tripartiella* Lom, 1959 and *Paratrachodina* are 290°, and



**Fig. 1.** Photomicrographs of *Trichodina corydori* n. sp. from *Corydoras paleatus*. **A–B** – Silver nitrate-impregnated adhesive discs. **C** – Methylene-blue staining of adoral ciliary spiral. **D** – and orcein stain of macronucleus. Scale bars: 10 µm.

the lower limit in *Trichodina* is 330°. Nevertheless, the importance of the length of the adoral cilia as a generic characteristic sometimes appears to be less distinct than previously thought. Recently the majority of described species have in effect been classified based on denticle morphology alone (Gaze and Wootton 1999). The adoral spiral in *T. corydori* n. sp. presents a turn of more than 330°, which falls in the range for *Trichodina*.

The denticle shape of *T. corydori* mostly resembles *Paratrachodina africana* Kazubski and El-Tantawy, 1986 recently reported from wild and farmed *Oreochromis niloticus* (Linnaeus) in eastern Amazonia, Brazil by

Tavares-Dias *et al.* (2013). However, *T. corydori* differs from *P. africana* in the shape of the denticle, some other measurements, as well as the adoral spiral: (1) The new species is larger than *P. africana*, for example, in the adhesive disc (27.7–37.0 vs. 12.2–25), and denticulate ring (16.2–23.3 vs. 5.7–16.5). (2) In the case of the new species, the ray length is similar to blade length, but in the case of *P. africana* the ray is shorter than the blade. (3) The ray is thicker in the new species than in *P. africana*. (4) The section connecting the blade and the central part is very short in the new species, but long in *P. africana*. (5) The morphometric data of the new species also vary

when compared to those of *P. africana*, e.g., blade length (3.4–4.4 vs. 1.5–3.8), ray length (3.5–5.1 vs. 0.5–2.1), denticle span (8.0–10.7 vs. 2.9–5.5).

This is the first report of a trichodinid from *C. paleatus*.

***Trichodina cribbi* Dove and O'Donoghue, 2005 (Figs 2A–B; 4B)**

**Description.** Medium-sized, freshwater trichodinid: body diameter, 49.5–69.8 (61.4±6.6); diameter of adhesive disc, 40.5–59.9 (51.2±5.8); denticulate ring diameter, 24.6–37.8 (32.8±3.8); width of border membrane 4.0–5.6 (4.9±0.6); denticle number, 27–37 (33); number of radial pins per denticle, 9–11(11); denticle span, 11.1–15.3 (13.7±1.1); denticle length, 3.6–6.0 (5.2±0.8); centre of adhesive disc clear with clear rounded or slightly notched perimeter containing a few to a large number of dark granules, rarely forming patches; blade length, 5.1–6.4 (5.8±0.5). Anterior blade margin slants gradually downwards towards apex, touching Y+1 axis. Apex rounded. Blade apophysis not visible. Distal blade margin higher than tangent point. Tangent point delicate. Posterior blade margin strongly curved and L-shaped, deepest point on same level as apex. Posterior projection weakly developed, but present. Section connecting blade and central part robust, clearly distinguishable from blade. Central part squat and well developed with rounded tip, fitting tightly into

preceding denticle, extends halfway to Y-1. Central part above and below the X-axis not similar, section above with slanted edge, whilst section below more angular in shape. Central part width is 2.1–3.5 (2.8±0.4). Prominent indentation present in lower central part. Section connecting central part and ray very robust. Rays strongly developed, irregular in shape, tapering sharply to a rounded point. Rays prominently curved posteriorly, directed towards Y-1 axis with ends crossing Y-1 axis. Ray apophysis not observed. Ray length 3.5–6.1 (4.7±0.7). Ratio of denticle above to denticle below x axis more than one (1.2–1.3). Nuclear apparatus and adoral cilia not observed.

**Host:** *Jenynsia multidentata* Jenyns, 1842 (Cyprinodontiformes: Anablepidae)

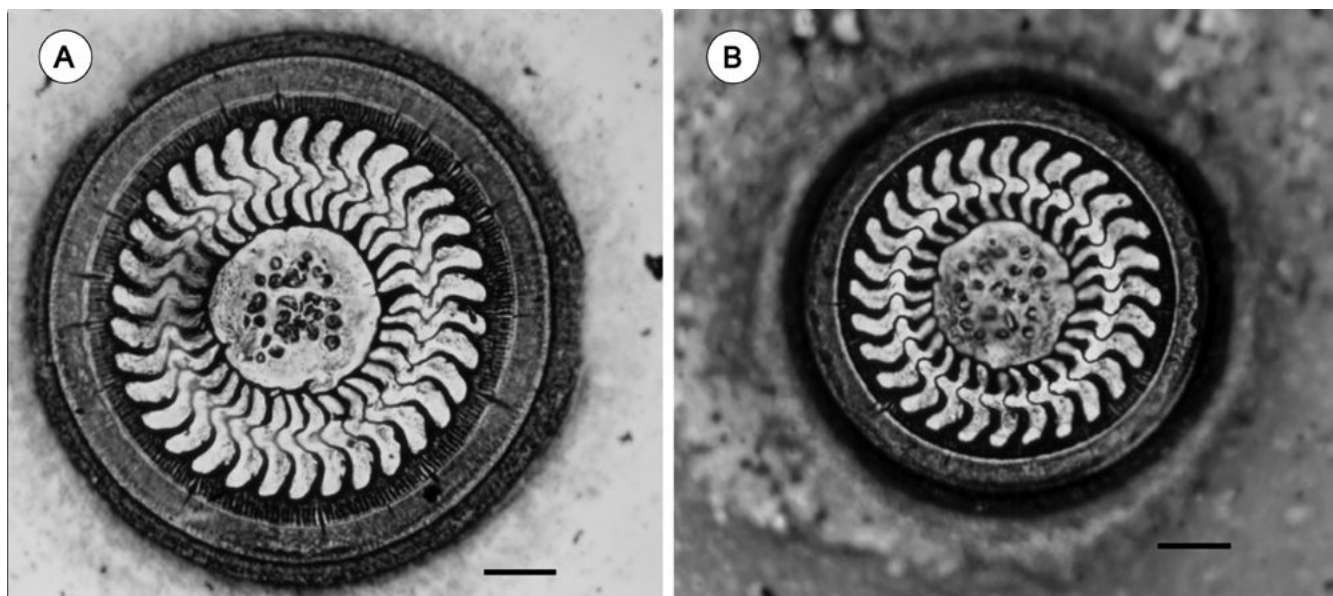
**Locality:** Samborombón River (Brandsen), Buenos Aires, Argentina (35°10'39.79"S, 58°15'29.70"W)

**Site of infection:** gills, skin and fins

**Voucher specimens:** MLP-Pr100

**Remarks.** *Trichodina cribbi* Dove and O'Donoghue, 2005 is characterized by a large circular central inclusion and approximately 28 denticles and with a blade length slightly greater than the ray length. The morphometric characteristics of specimens studied here correspond well with *T. cribbi* as provided by Dove and O'Donoghue (2005).

This species was originally described by Dove and O'Donoghue (2005) from gills of fishes of the Black



**Fig. 2.** Photomicrographs of silver nitrate-impregnated adhesive discs of trichodinids from *Jenynsia multidentata*. A–B – Photomicrographs of *Trichodina cribbi*. Scale bars: 10 µm.

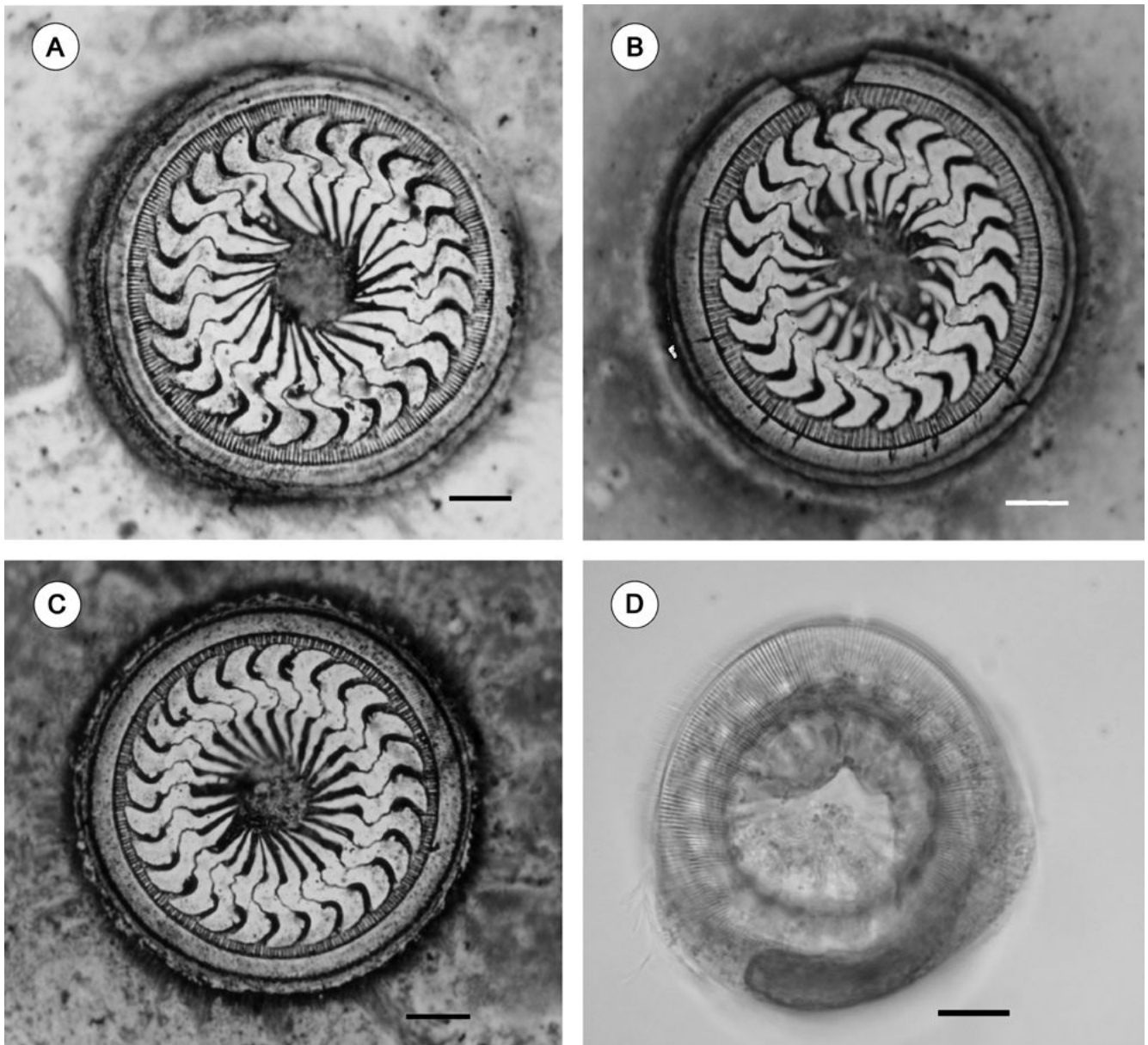
Mountain Peninsula, Lake Burley, Griffin, and Canberra, Australia. Nevertheless, in *C. paleatus* during this study, *T. cribbi* was found also on the skin and fins.

This is the second report of this species worldwide, the first record from the Americas and from a new position on the host. The present report also expands on the host range, adding a new host family.

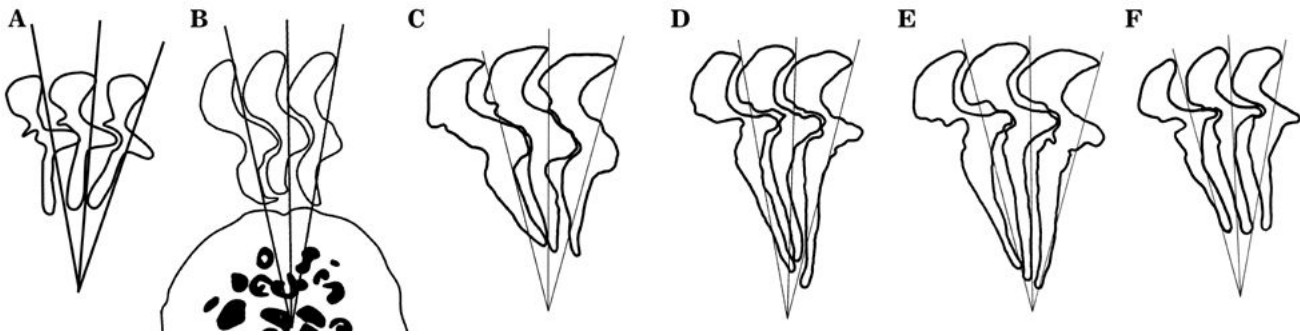
***Trichodina jenynsii* n. sp. (Figs 3A–D, 4C; Table 1)**

**Description.** Medium to large freshwater trichodinid: body diameter, 62.6–76.3 ( $65.5 \pm 4.5$ ); adhesive disc

diameter, 54.6–66.9 ( $57.8 \pm 3.9$ ); denticulate ring diameter, 29.9–41.5 ( $34.3 \pm 3.6$ ); width of border membrane, 2.8–6.7 ( $4.4 \pm 1.2$ ); denticle number, 23–26 (25); number of radial pins per denticle, 14–16 (16); denticle span, 16.1–22.0 ( $19 \pm 2.0$ ); denticle length, 6.2–8.4 ( $6.9 \pm 0.6$ ); central zone of adhesive disc dark; blade length, 4.7–7.7 ( $5.9 \pm 0.9$ ). Blade large, filling large part of space between Y-axes. Distal blade margin almost parallel to border membrane, where-after it slants sharply towards apex. Tangent point narrow, almost on same level as



**Fig. 3.** Photomicrographs of *Trichodina jenynsii* n. sp. from *Jenynsia multidentata*. A–C – Adhesive disc after dry silver impregnation. D – Macronucleus with methylene-blue staining. Scale bars: 10  $\mu$ m.



**Fig. 4.** Diagrammatic drawings of denticles of trichodinids. **A** – *Trichodina corydori* n sp. from *Corydoras paleatus*. **B** – *T. cribbi* from *Jenynsia multidentata*. **C** – *T. jenynsii* n sp. from *J. multidentata*. **D** – *T. pediculus* redrawn from Kazubski and Migala (1968). **E** – *T. pediculus* redrawn from Gaze and Wooten (1998). **F** – *T. pediculus* redrawn from Kazubski (1991c).

distal margin. Apex of blade prominent, extending beyond Y-axis and clearly distinguishable from anterior blade margin. Anterior blade margin with a prominent apex that shows a clear notch proximal to apex in most denticles of some specimens. Notch present in all specimens, but not equally prominent in all. Blade apophysis present. Posterior blade margin deeply rounded, mostly L-shaped with deepest point lower or at same level as blade apex. Posterior projection well developed, present in majority of denticles. Section connecting blade and central part robust, indistinguishable from thinnest part of blade. Central part well developed, characteristically squat and short, with broadly rounded point that fits tightly into preceding denticle. Central part extends halfway to Y-1 axis. Shape of central part above and below X-axis not similar, upper part with indentation, slanting towards posterior projection, with lower portion more angular. Central part, 3.8–5.7 (4.3±0.6) wide. Section connecting central part and ray very robust. Ray apophysis present, but weakly developed. Ray base projecting from ray connection very robust. Ray tapers rapidly to a narrow, rounded point. Rays strongly developed and prominent, but show irregularities in shape and in smoothness along their length, as well as in amount of slanting. Some rays prominently slanted posteriorly, others slanted anteriorly, all crossing Y axes (either Y-1 or Y+1 respectively), while others are straight, either running along Y-axes or between them. No matter the angle of rays, all are straight, none showing a curved nature. Ray length, 6.8–11.5 (8.7±1.6). Ratio of denticle above to denticle below X axis less than 1 (0.66–0.69). Macronucleus horseshoe-shaped, external diameter 43.7–45.4 (44.5±0.9). Adoral ciliary spiral 380–410°.

**Host:** *Jenynsia multidentata* Jenyns, 1842 (Cypripinodontiformes: Anablepidae)

**Locality:** Samborombón River (Brandsen), Buenos Aires, Argentina (35°10'39.79"S, 58°15'29.70"W)

**Site of infections:** skin

**Type specimens:** MLP-Pr 100

**Etymology:** The specific epithet “jenynsii” is coined from the name of host species.

**Remarks.** *Trichodina jenynsii* n. sp. shows some similarities with *T. pediculus* Ehrenberg, 1838. *Trichodina pediculus* is a cosmopolitan species reported from a broad range of hosts, including coelenterates, amphibians and fishes. The distinguishing features of *T. pediculus* are the curved blades and prominently-shaped denticle rays that are characteristically extremely long, tapering to thin sharp points in adult specimens. *Trichodina jenynsii* shows some morphometric and denticle shape similarities that correspond with *T. pediculus*, but also shows clear and conspicuous differences.

Most populations of *T. pediculus* are much smaller in overall body dimensions than *T. jenynsii*. In Table 1 various populations of *T. pediculus* where silver impregnation was used, are presented, i.e. that of Raabe (1959), Kazubski and Migala (1968), Lom (1970), Kazubski (1991a, b, c), Grupcheva and Sedlacek (1993) and Gaze and Wooten (1998). The only exception is for the population of Lom (1970) described from hydras from Japan where the upper limit of the adhesive disc diameter is equal to that of *T. jenynsii*. However, the mean is still much smaller (i.e. 49 µm for *T. pediculus* from hydras versus 57.8 µm for *T. jenynsii*). The same applies to other body dimension between these two species (see Table 1). We doubt the accurate identification

Table 1. Biometrical data (in  $\mu\text{m}$ ) of different populations of *Trichodina pediculus* (Mueller, 1786) Ehrenberg, 1838 and *T. jenynsii* n. sp.

Trichodinid Species	<i>T. pediculus</i>	<i>T. pediculus</i> #	<i>T. pediculus</i>	<i>T. pediculus</i>	<i>T. pediculus</i>	<i>T. pediculus</i>	<i>T. pediculus</i>	<i>T. pediculus</i>	<i>T. pediculus</i>	<i>T. pediculus</i>	<i>T. pediculus</i>	<i>T. pediculus</i>	<i>T. jenynsii</i> n. sp.
Host	<i>Pelmatohydra oligactis</i>	<i>Micropterus salmoides</i>	<i>Hydra vulgaris attenuata</i>	<i>Ctenopharyngodon idella</i>	<i>Cyprinus carpio</i>	<i>Gasterosteus aculeatus</i>	<i>Carassius carassius</i>	<i>Hydra vulgaris</i>	<i>Rana temporaria</i>	<i>Cyprinus carpio</i>	<i>Jenynsia multidentata</i>		
Locality	Warszawa	USA	Japan	Former Czechoslovakia	Poland	United Kingdom	Poland	Poland	Poland	Germany	Argentina		
Reference	Raabe (1959)	Wellborn (1967)	Lom (1970)	Lom (1970)	Kazubski & Migala (1968)	Gaze & Wootten (1998)	Kazubski (1991a)	Kazubski (1991b)	Kazubski (1991c)	Grupcheva & Sedlacek (1993)	Present study		
Body diam	35–60	69 (61–86)	41–69 (49)	39–54 (46)	57.2–70.0	46.0–57.2 (50.1 $\pm$ 3.6)	(51.45 $\pm$ 3.89)	(52.14 $\pm$ 4.20)	(52.14 $\pm$ 4.20)	56–59	62.6–76.3 (65.5 $\pm$ 4.5)		
Adh disc diam	27.5–47.5 (37.5)	48 (45–57)	41–69 (49)	39–54 (46)	48.8–59.4	46.0–57.2 (50.1 $\pm$ 3.6)	(45.95 $\pm$ 4.15)	(47.93 $\pm$ 3.73)	(47.93 $\pm$ 3.73)	43–45	54.6–66.9 (57.8 $\pm$ 3.9)		
B.m.w.		3–5			–	3.4–5.0 (4.4 $\pm$ 0.4)				3.1–4.6	2.8–6.7 (4.4 $\pm$ 1.2)		
Dent ring diam	15–35 (25)	29 (25–35)	28–35 (32)	25–36 (30)	32.3–38.7	29.3–34.0 (32.0 $\pm$ 1.6)	(35.87 $\pm$ 2.31)	(29.33 $\pm$ 2.34)	(32.2 $\pm$ 2.8)	28–32	29.9–41.4 (34.3 $\pm$ 3.6)		
Dent number	22–27 (25)	23 (22–26)	24–30 (27)	25–31 (27)	28–29	26–29 (27)	(28.67 $\pm$ 1.54)	(26.04 $\pm$ 1.08)	(27.4 $\pm$ 1.25)	25–30	23–26 (25)		
Rad p/dent	7–8	10–12			–	6–8 (7.5)	–			7–8	14–16 (16)		
Dent length		10–12			15.9–18.0	6.6–8.3 (7.5 $\pm$ 0.6)	(3.93)	(3.54)	(15.93 $\pm$ 1.94)	6.1–6.6	6.2–8.4 (6.9 $\pm$ 0.6)		
Blade length	*3.5–5	6 (5.5–7)				4.9–6.2 (5.6 $\pm$ 0.3)				4.6	4.7–7.7 (5.9 $\pm$ 0.9)		
C.p.w.		2–3				1.3–2.5 (1.9 $\pm$ 0.3)				2.0	3.8–5.7 (4.3 $\pm$ 0.6)		
Ray length	*7.5–11	7–9				9.2–13.6 (11.6 $\pm$ 1.3)				7.1–9.7	6.8–11.5 (8.7 $\pm$ 1.6)		
Denticle span						16.6–21.8 (18.9 $\pm$ 1.6)	(19.3 $\pm$ 1.21)	(15.95 $\pm$ 1.77)	(3.69)	13.8–16.3	16.1–22.0 (19 $\pm$ 2.0)		
Ad spiral	Roughly 400°												
Ma	Sausage-like												
Mi	Near Ma end												
n			4			12	30	> than 60	> than 25	3	20		

of the trichodinid identified as *T. pediculus* by Wellborn (1967). It appears to show a lot of similarities to another species described by this author, i.e. *T. hypsilepis* Wellborn, 1967. This is, however, a topic for another study.

The number of radial pins also differ markedly between *T. pediculus* and *T. jenynsii*, only provided in two cases for the former species, i.e. by Raabe (1959) and Grupcheva and Sedlaczek (1993), indicated as 7–8 in both instances. This represents half of the number found in *T. jenynsii* (14–16). Only the population provided by Wellborn (1967) comes close, but as stated previously, this trichodinid identification is in doubt.

The most important differences between *T. pediculus* and *T. jenynsii* can be found in the denticle shape (Figs 4C–F). According to Kazubski and Migala (1968) the denticle of *T. pediculus* have a longitudinal rib running along the ray in large specimens, this rib is clearly absent in *T. jenynsii*. Whilst *T. jenynsii* also characteristically have very long, tapering rays, as in *T. pediculus*, the denticles differ in the following features: *T. pediculus* typically has very slender central parts that do not always fit very tightly, fitting rather loosely into the preceding denticles. This can be seen in Kazubski and Migala (1968, Plate I, Nos. 1, 2), Kazubski (1991c, Figs 1, 2) and Gaze and Wooten (1998, Figs 3A, B). In the case of *T. jenynsii* the central part is shaped very differently, it is squat and very sturdy with the shape above and below the X-axis distinctly different. The tip of the central part also barely reaches the middle of the Y-1 axis, where-as in *T. pediculus*, the central part tip reached more than halfway to Y-1 axis. There is also a wide and prominent posterior projection that corresponds very closely with a distinct notch in the distal central part (central part above X-axis), ensuring very tight-fitting denticles in the case of *T. jenynsii*. In *T. pediculus* the posterior projection, if visible, is weakly developed and does not correspond very closely to a notch in the central part above the X-axis, if it is indeed present.

In all silver-impregnated specimens of *T. pediculus* the blade connection is very delicate, where-as this connection is robust and large in *T. jenynsii*. Where the rays leave the central part in *T. pediculus* there is an obvious thickening, producing a very strongly developed ray connection that is in most cases as robust, but in some more robust than the width of the central part. In *T. jenynsii* the ray connection is robust, but never as stout as the very wide and squat central part. There is also a marked difference in the rays between these two species. *Trichodina pediculus* typically has very long rays, tapering to sharp thin points, almost meeting in

the center in adult specimens. The rays in *T. jenynsii* tapers more gradually, are not nearly as long, never tapers to sharp points and never reaches as far into the center as do the rays of *T. pediculus*.

Lastly, the ratio of the denticle above to below the X-axis also differs. In *T. jenynsii* this varies from 0.66–0.69. However, in *T. pediculus* this ratio varies from 0.46 for the population described by Raabe (1959) (indicated as 1:2, thus 0.5 by Raabe himself), 0.48 for *T. pediculus* described by Grupcheva and Sedlaczek (1993) and 0.58 for the population of Gaze and Wooten (1998), an indication that the ray is far longer than the blade in *T. pediculus* than is the case for *T. jenynsii*. For most of the other populations (see Table 1) this ratio cannot be calculated, as denticle dimensions were not provided.

It appears that while *T. pediculus* is supposedly the most well known of all trichodinid species, a well described population representing a large number of specimens is not available. Kazubski (1991a, b, c) provided some measurements for large populations from *Hydra vulgaris*, *Rana temporaria* tadpoles and *Carassius carassius* respectively, but provided only the length and width of the denticles and no other denticle dimensions. Large populations of *T. pediculus* from fish hosts appear to be scant, therefore a detailed description of this species from fish hosts is urgently required. Kazubski and Migala (1968), Grupcheva and Sedlaczek (1993) and Gaze and Wooten (1998) based their descriptions on very small numbers of *T. pediculus* on *Cyprinus carpio* (in first two reports) and *Gasterosteus aculeatus* (for the third) respectively (i.e. 4, 3 and 12 specimens measured respectively).

Very few recent studies have provided a description of the full nuclear apparatus, as a matter of fact only Raabe (1959) gives some indication of this; describing a sausage-shaped macronucleus, frequently irregular in thickness and terminally pointed, describing an arc of roughly 300° and ±16 µm in diameter, with a micronucleus located near one of the end of the macronucleus. In the present study, no micronucleus was detected and the horseshoe-shaped macronucleus has an external diameter of 43.7–45.4 (44.5) µm.

**Acknowledgements.** This work was funded by a fellowship grant from Consejo Nacional de Investigaciones Científicas y Tecnológicas (CONICET) to P. Marcotegui, and a research grant from La Plata National University (UNLP: N504) to S. Martorelli.



## REFERENCES

- Cremonte F., Figueras A. (2004) Parasites as possible cause of mass mortalities of the presently critically endangered clam *Mesodesma mactroides* on the Southwest Atlantic coast. *Bull. Eur. Assoc. Fish Pathol.* **24**: 166–171
- Cremonte F., Figueras A., Burreson E. M. (2005) A histopathological survey of some commercially exploited bivalve molluscs in northern Patagonia, Argentina. *Aquaculture* **249**: 23–33
- Dove A. D. M., O'Donoghue P. J. (2005) Trichodinids (Ciliophora: Trichodinidae) from native and exotic Australian freshwater fishes. *Acta Protozool.* **44**: 51–60
- Foissner W. (1992) The dry silver nitrate method. In: *Protocols in Protozoology* (Eds. J. J. Lee and A. T. Soldo). Allen Press, Kansas, C 11.1–C11.3
- Gaze W. H., Wootten R. (1999) An SEM study of adhesive disc skeletal structures isolated from trichodinids (Ciliophora: Peritrichida) of the genera *Trichodina* Ehrenberg, 1838 and *Paratrachodina* Lom, 1963. *Syst. Parasitol.* **43**: 167–174
- Gaze W. H., Wootten R. (1998) Ectoparasitic species of the genus *Trichodina* (Ciliophora: Peritrichida) parasitising British freshwater fish. *Folia Parasit.* **45**: 177–190
- Ghedotti M. J., Weitzman S. H. (1996) A new species of *Jenynsia* (Cyprinodontiformes: Anablepidae) from Brazil with comments on the composition and taxonomy of the genus. Occasional papers of the Natural History Museum. The University of Kansas. *Lawrence* **179**: 1–25
- Grupcheva G., Sedlaczek J. (1993) Some trichodinid ciliates (Ciliata: Urceolariidae) from common carp and sticklebacks in eastern Germany. *J. Appl. Ichthyobiol.* **9**: 123–128
- Hashimoto G. S. O., Marchiori N. C., Pádua S. B., Ishikawa M. M., Garcia J. R. E., Martins M. L. (2016) A new species of *Trichodina* Ehrenberg, 1830 (Ciliophora: Trichodinidae) from *Rhamdia quelen* (Siluriformes: Heptapteridae) and *Gymnotus* sp. (Teleostei: Gymnotidae) in Brazil. *Acta Parasitol.* **61**: 707–712
- Kazubski S. L., Migala K. (1968) Urceolariidae from breeding carp *Cyprinus carpio* L. in Zabieniec and remarks on the seasonal variability of trichodinids. *Acta Protozool.* **6**: 137–160
- Kazubski S. L. (1991a) Morphological variation of the ciliate *Trichodina pediculus* Ehrenberg, 1838. I. Parasitising hydras. *Acta Protozool.* **30**: 169–175
- Kazubski S. L. (1991b) Morphological variation of the ciliate *Trichodina pediculus* Ehrenberg, 1838. II. Parasitising on tadpoles. *Acta Protozool.* **30**: 177–186
- Kazubski S. L. (1991c) Morphological variation of the ciliate *Trichodina pediculus* Ehrenberg, 1838. III. Parasitising on crucian carp (*Carassius carassius* (L.)) from small ponds in Kortowo (Olsztyn). *Acta Protozool.* **30**: 187–192
- Lom J. (1970) Trichodinid ciliates (Peritrichida: Urceolariidae) from some marine fishes. *Folia Parasitol.* **17**: 113–125
- Lom J. (1958) A contribution to the systematics and morphology of endoparasitic trichodinids from amphibians, with a proposal of uniform specific characteristics. *J. Eukaryot. Microbiol.* **5**: 251–263
- Lom J., Haldar D. P. (1976) Observations on trichodinids endocommensal in fishes. *Trans. Amer. Microsc. Soc.* **95**: 527–541
- Marcotegui P. S., Martorelli S. R. (2009) Trichodinids (Ciliophora: Peritrichida) of *Mugil platanus* (Mugiliformes: Mugilidae) and *Micropogonias furnieri* (Perciformes: Sciaenidae) from Samborombon Bay, Argentina with the description of a new species. *Folia Parasitol.* **56**: 167–172
- Martins M. L., Ghiraldelli L. (2008) *Trichodina magna* Van As and Basson, 1989 (Ciliophora: Peritrichida) from cultured Nile tilapia in the state of Santa Catarina, Brazil. *Braz. J. Biol.* **68**: 177–180
- Martorelli S., Marcotegui P., Alda M. (2008) *Trichodina marplatensis* n. sp. (Ciliophora: Trichodinidae) from Combjelly, *Mnemiopsis mccradyi* (Mayer, 1900) in Argentine Sea. *Acta Protozool.* **47**: 257–261
- Miranda H., Marchiori L., Rebaza Alfaro C., Martins M. L. (2012) First record of *Trichodina heterodentata* (Ciliophora: Trichodinidae) from *Arapaima gigas* cultivated in Peru. *Acta Amazonica* **42**: 433–438
- Raabe Z. (1959) Urceolariidae of gills of Gobiidae and Cottidae from Baltica Sea. *Acta Parasitol. Polon.* **7**: 441–452
- Tavares-Dias M., da Costa Marchiori N., Martins M. (2013) *Paratrachodina africana* (Ciliophora: Trichodinidae) of wild and cultured Nile tilapia in the Northern Brazil. *Rev. Bras. Parasitol. Vet.* **22**: 248–252
- Van As J. G., Basson L. (1989) A further contribution to the taxonomy of the Trichodinidae (Ciliophora: Peritrichida) and a review of the taxonomic status of some fish ectoparasitic trichodinids. *Syst. Parasitol.* **14**: 157–179
- Van As J. G., Basson L. (1992) Trichodinid ectoparasites (Ciliophora: Peritrichida) of freshwater fishes of the Zambesi River System, with a reappraisal of host specificity. *Syst. Parasitol.* **22**: 81–109
- Viozzi G. (1996) Presencia de protozoos parásitos de peces autóctonos de Patagonia Argentina. *Bol. Chil. Parasitol.* **51**: 32–34
- Wellborn T. L. (1967) *Trichodina* (Ciliata: Urceolariidae) of freshwater fishes of the southeastern United States. *J. Protozool.* **14**: 399–412
- Yemmen C., Quilichini Y., Hédi Ktari M., Marchand B., Bahri S. (2010) Morphological, ecological and histopathological studies of *Trichodina gobii* Raabe, 1959 (Ciliophora: Peritrichida) infecting the gills of *Solea aegyptiaca*. *Protistology* **6**: 258–263

Received on 8<sup>th</sup> November, 2016; revised on 15<sup>th</sup> 2016; accepted on 16<sup>th</sup> December, 2016