



# Decay-Accelerating Factor 1 Deficiency Exacerbates Leptospiral-Induced Murine Chronic Nephritis and Renal Fibrosis

María F. Ferrer<sup>1</sup>, Emilia Scharrig<sup>1</sup>, Lucrecia Alberdi<sup>1</sup>, Maia Cedola<sup>1</sup>, Gabriela Pretre<sup>1</sup>, Ricardo Drut<sup>2</sup>, Wen-Chao Song<sup>3</sup>, Ricardo M. Gomez<sup>1\*</sup>

**1** Instituto de Biotecnología y Biología Molecular, CONICET-UNLP, La Plata, Buenos Aires, Argentina, **2** Cátedra de Patología "A", Facultad de Medicina, UNLP, La Plata, Buenos Aires, Argentina, **3** Department of Pharmacology, Perelman School of Medicine, University of Pennsylvania, Philadelphia, Pennsylvania, United States of America

## Abstract

Leptospirosis is a global zoonosis caused by pathogenic *Leptospira*, which can colonize the proximal renal tubules and persist for long periods in the kidneys of infected hosts. Here, we characterized the infection of C57BL/6J wild-type and *Daf1*<sup>-/-</sup> mice, which have an enhanced host response, with a virulent *Leptospira interrogans* strain at 14 days post-infection, its persistence in the kidney, and its link to kidney fibrosis at 90 days post-infection. We found that *Leptospira interrogans* can induce acute moderate nephritis in wild-type mice and is able to persist in some animals, inducing fibrosis in the absence of mortality. In contrast, *Daf1*<sup>-/-</sup> mice showed acute mortality, with a higher bacterial burden. At the chronic stage, *Daf1*<sup>-/-</sup> mice showed greater inflammation and fibrosis than at 14 days post-infection and higher levels at all times than the wild-type counterpart. Compared with uninfected mice, infected wild-type mice showed higher levels of IL-4, IL-10 and IL-13, with similar levels of  $\alpha$ -smooth muscle actin, galectin-3, TGF- $\beta$ 1, IL-17, IFN- $\gamma$ , and lower IL-12 levels at 90 days post-infection. In contrast, fibrosis in *Daf1*<sup>-/-</sup> mice was accompanied by high expression of  $\alpha$ -smooth muscle actin, galectin-3, IL-10, IL-13, and IFN- $\gamma$ , similar levels of TGF- $\beta$ 1, IL-12, and IL-17 and lower IL-4 levels. This study demonstrates the link between *Leptospira*-induced murine chronic nephritis with renal fibrosis and shows a protective role of *Daf1*.

**Citation:** Ferrer MF, Scharrig E, Alberdi L, Cedola M, Pretre G, et al. (2014) Decay-Accelerating Factor 1 Deficiency Exacerbates Leptospiral-Induced Murine Chronic Nephritis and Renal Fibrosis. PLoS ONE 9(7): e102860. doi:10.1371/journal.pone.0102860

**Editor:** Yung-Fu Chang, Cornell University, United States of America

**Received:** March 14, 2014; **Accepted:** June 24, 2014; **Published:** July 17, 2014

**Copyright:** © 2014 Ferrer et al. This is an open-access article distributed under the terms of the Creative Commons Attribution License, which permits unrestricted use, distribution, and reproduction in any medium, provided the original author and source are credited.

**Funding:** This work was supported by grants from Universidad Nacional de La Plata (X592), Agencia Nacional de Promoción Científica y Tecnológica (ANPCyT) PICT 07-00642, 07-00028 and 12-0434 (RMG). The funders had no role in study design, data collection and analysis, decision to publish, or preparation of the manuscript.

**Competing Interests:** The authors have declared that no competing interests exist.

\* Email: rmg1426@gmail.com

## Introduction

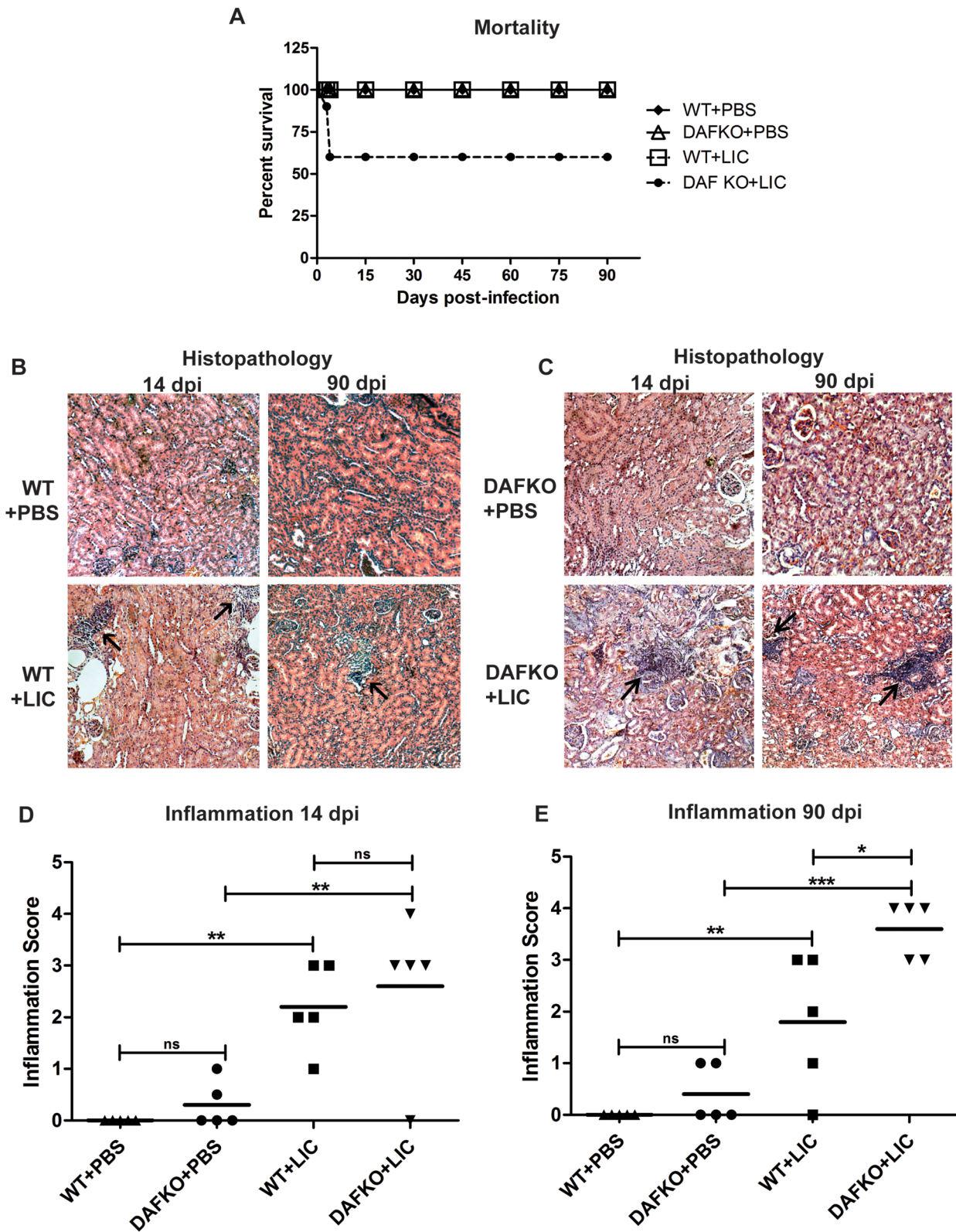
Renal fibrosis is a reliable predictor of prognosis, a major determinant of renal insufficiency and a common final outcome of almost all progressive chronic kidney diseases (CKD) [1,2]. In USA the prevalence of CKD is increasing and affects an estimated 13% of the population [3] or even more in developing countries [4]. The etiology of CKD in developed countries is associated with atherosclerosis, diabetes, and autoimmune glomerulonephritis [2]. However, it is possible that in developing countries infections have also a significant impact.

Leptospirosis is a global zoonosis caused by spirochetes of the genus *Leptospira* [5]. Human infection commonly occurs through direct contact with infected animal urine or indirectly through contaminated water. Almost every mammal can serve as a carrier of leptospires, harboring the spirochete in the proximal renal tubules of the kidneys, leading to urinary shedding. Rodents, mainly rats, serve as the major carriers in most human leptospirosis, excreting high concentrations of leptospires (10<sup>7</sup> organisms per ml) months after their initial infections [6]. Consequently, leptospirosis can be considered a disease with an endemo-epidemic pattern associated with slum settlements [7]. Leptospirosis is usually a biphasic disease with an early bacteremic

phase during which leptospires are disseminated rapidly throughout the body during the first 7–10 days of infection. This is followed by a leptospiruric phase during which specific antibodies arise in parallel with the disappearance of the bacteria from the blood and most organs with the exception of the kidneys, where it can persist for long periods of time [8]. Although it can cause death or very severe symptoms (Weil's syndrome), most documented cases are mild and self-limiting [9]. It is accepted that an accurate diagnosis of leptospirosis is frequently lacking.

In experimental leptospirosis, animal species and strain, age, dose inoculum, bacterial history, passage and *Leptospira* serovar influence the infection outcome [9,10]. Guinea pigs and hamsters are the most commonly used animal experimental models for studying acute parameters [11,12], whereas rats are considered a suitable model for studying persistent renal colonization [13,14]. In contrast, mice are relatively more resistant, presenting fewer symptoms and lesions and lower mortality, and are therefore used less as a model [10]. However, mice may become more susceptible via immunosuppression [15], or by deletion of specific cytokine genes [16], suggesting that the immune response plays a major role in murine infection.

Decay-accelerating factor 1 (*Daf1* or CD55) is a glycosylphosphatidylinositol-anchored membrane protein of the complement-



**Figure 1. Leptospirosis-induced nephritis in C57BL/6J wild-type and *Daf1*<sup>-/-</sup> mice at 14 and 90 dpi.** **A)** Survival percentage of WT+PBS (dark rhombus), WT+LIC (white square), DAFKO+PBS (white triangle) and DAFKO+LIC (dark circle) mice. Mice were monitored daily and euthanized by CO<sub>2</sub> overdose at 90 dpi (5–7 mice were used). Mortality of C57BL/6J *Daf1*<sup>-/-</sup> LIC-infected mice at 3 or 4 dpi was unexpected and presented no previous signs. **B–C)** Histopathologic sections of uninfected (WT+PBS and DAFKO+PBS) and infected C57BL/6J wild-type (WT+LIC) and *Daf1*<sup>-/-</sup> (DAFKO+LIC) kidneys at 14 and 90 dpi assessed by hematoxylin and eosin staining (x200). Lymphomonocytic-rich infiltrates are indicated by arrows. **D–E)** Inflammation score of uninfected and LIC-infected C57BL/6J wild-type and *Daf1*<sup>-/-</sup> animals. Mean inflammation score is represented by a straight line; \**p*<0.05, \*\**p*<0.01, \*\*\**p*<0.001, <sup>ns</sup>*p*>0.05. doi:10.1371/journal.pone.0102860.g001

regulatory family that protects cells from autologous complement attack [17]. *Daf1* inhibits the assembly and accelerates the rapid decay of C3 and C5 convertases in both the classical and alternative complement activation pathways [17]. Interestingly, many kidney pathologies have been linked to abnormal complement activation [18]. It has been reported that *Daf1*<sup>-/-</sup> mice are more susceptible to complement-mediated inflammatory injury and have significantly enhanced T-cell responses to active immunization. This phenotype is characterized by hypersecretion of interferon (IFN)- $\gamma$  and IL-2 as well as down-regulation of the inhibitory cytokine IL-10 during antigen restimulation of lymphocytes *in vitro* [19]. Furthermore, several studies have shown that the absence of *Daf1* exacerbates disease in a variety of autoimmune models, including systemic autoimmune disease in the MLR-FasLpr mouse [20,21], focal and segmental glomerulosclerosis [22] and mercury-induced autoimmunity [23], by enhancing T-cell and autoimmune responses associated with hypersecretion of IFN- $\gamma$ , IL-12 and IL-17 [19,24,25,26].

Galectin-3 (Gal-3) is a  $\beta$ -galactoside-binding animal lectin [27]. Gal-3 expression and secretion by macrophages is a major mechanism linking macrophages to fibroblast activation and myofibroblast accumulation, as demonstrated by their synthesis of  $\alpha$ -smooth muscle actin ( $\alpha$ -SMA), thus driving renal fibrosis in the unilateral ureteric obstruction model (UUO) [28].

We hypothesized that by using a reference strain with known virulence, mice may become susceptible to chronic experimental leptospirosis. If successful, we could then explore whether the persistent renal infection affects the renal extracellular matrix (ECM) and explore some of the mechanisms involved, particularly the influence of an enhanced host response. In the present paper, we report the establishment of a murine model of chronic leptospirosis followed by fibrosis in wild-type and *Daf1*<sup>-/-</sup> mice.

## Results

### *Leptospira interrogans* induces discrete to moderate nephritis in mice

In order to investigate whether *Leptospira interrogans*, serovar Copenhageni (LIC), was able to induce murine renal inflammation, and to study how an enhanced host response could impact in the disease, C57BL/6J wild-type (WT) and *Daf1*<sup>-/-</sup> mice of 3–4 weeks of age were infected with  $10^6$  bacteria and groups of five

animals were euthanized and necropsied at 14 and 90 days post-infection (dpi).

None of the uninfected (WT+PBS and *Daf1*<sup>-/-</sup>+PBS) or WT+LIC mice died during the experiment. In contrast, the *Daf1*<sup>-/-</sup>+LIC mice had 40% mortality at 4 dpi (Figure 1 A). No pathology was observed in uninfected mice (Figure 1 B–C). In contrast, infected animals developed interstitial nephritis in the form of multifocal lymphomonocytic infiltrates (Figure 1 B–C). The degree of inflammation was slightly higher (although not significant) in the *Daf1*<sup>-/-</sup>+LIC than in WT littermates at 14 dpi, but significantly higher at 90 dpi ( $p < 0.05$ , Figure 1 D–E), when only 80% of WT+LIC mice showed inflammation. Taken together, these results show that *Daf1*<sup>-/-</sup>+LIC mice have greater susceptibility to infection than their WT littermates.

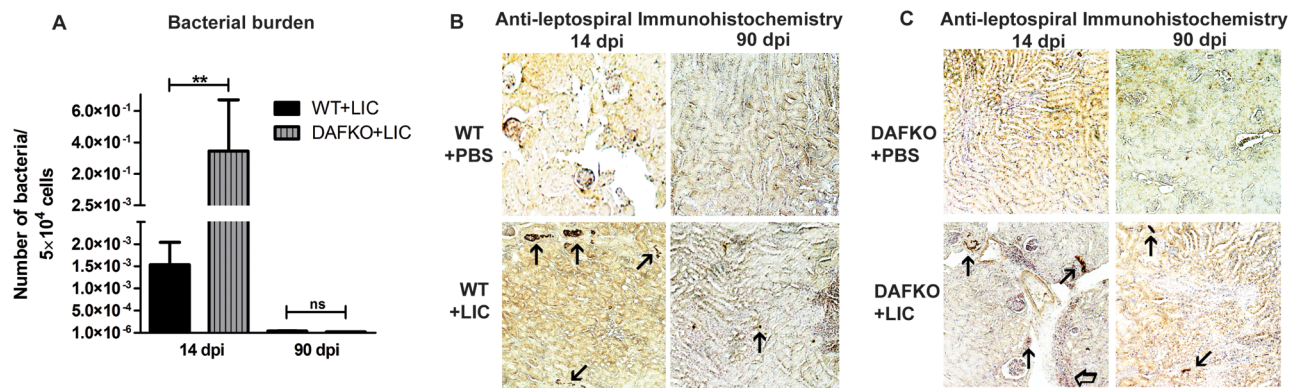
### Bacterial burden is significantly reduced at later time points

Kidney bacterial burden showed an unexpected 200-fold increase ( $3.48 \times 10^{-1}$  bacteria/ $5 \times 10^4$  cells) in *Daf1*<sup>-/-</sup> infected mice compared with WT mice at 14 dpi ( $1.53 \times 10^{-3}$  bacteria/ $5 \times 10^4$  cells,  $p < 0.01$ , Figure 2 A). In contrast, the kidney bacterial burden was markedly reduced in both *Daf1*<sup>-/-</sup> mice ( $1.4 \times 10^{-5}$  bacteria/ $5 \times 10^4$  cells) and WT infected animals ( $3.9 \times 10^{-5}$  bacteria/ $5 \times 10^4$  cells) at 90 dpi (Figure 2 A). Immunohistochemistry (IHC) showed that the tissue distribution of leptospiral antigen was present mostly on the luminal surface of the proximal tubules (Figure 2 B–C), and occasionally inside macrophages and in the interstitium. A moderate number of antigen spots were observed in samples of mice harvested at 14 dpi, but leptospiral antigen became almost undetectable in samples from both groups of mice at 90 dpi (Figure 2 B–C).

### LIC-induced chronic nephritis produces renal fibrosis

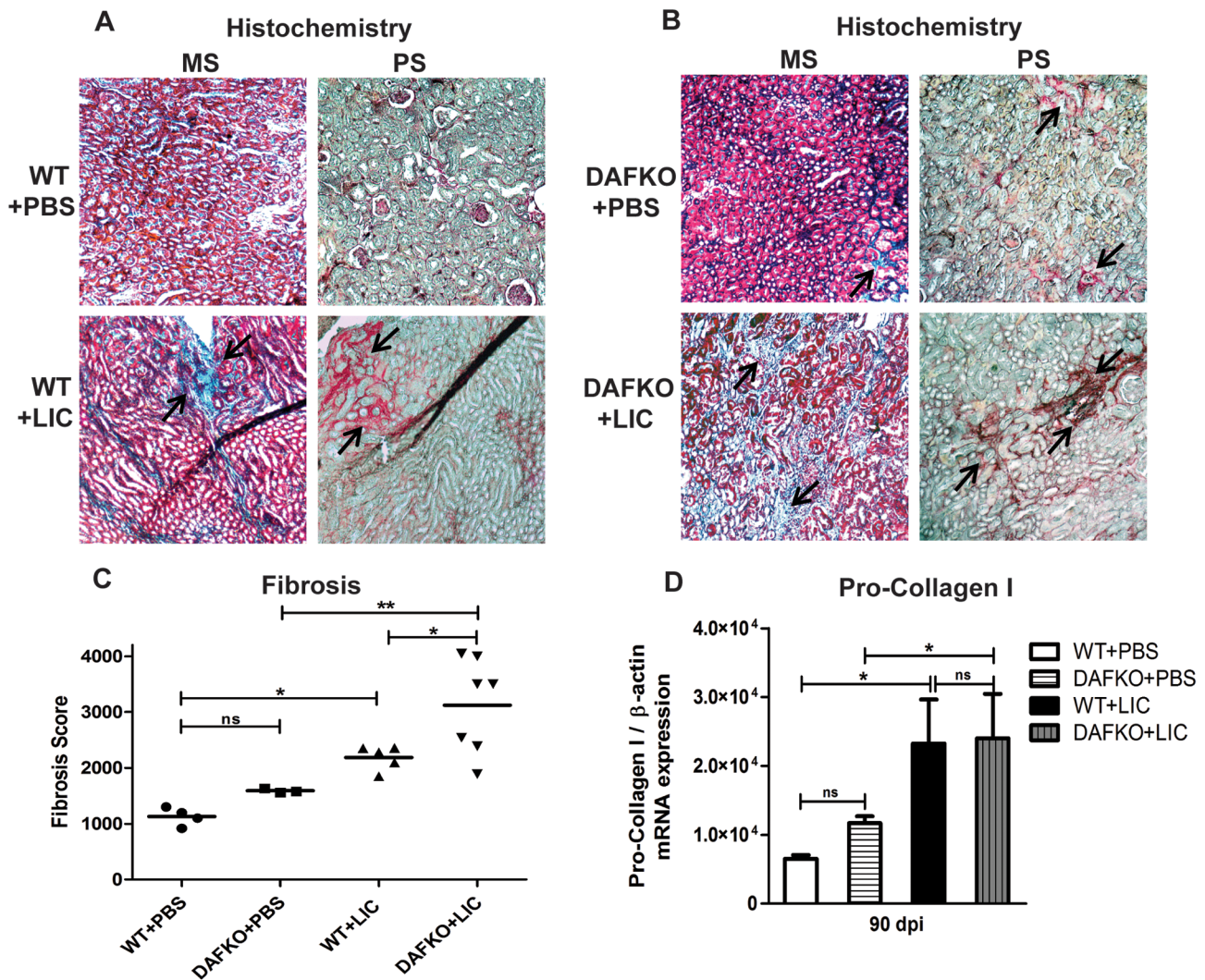
In order to investigate whether the chronic nephritis induced in C57BL/6J mice infected with LIC was linked to fibrosis, renal collagen deposition was observed with Masson's trichrome and digitally analyzed using Picro sirius red (PS) staining.

Uninfected animals had no signs of fibrosis during the experiment (Figure 3 A–B). On the other hand, renal interstitial fibrosis was evident with increased numbers of red collagen fibers, frequently observed away from lymphocyte-rich infiltrates in WT+LIC animals and even more in *Daf1*<sup>-/-</sup> infected mice ( $p < 0.05$



**Figure 2. Bacterial burden is significantly reduced at later time points.** **A)** Quantitative measurement of leptospiral DNA (16S) in kidney samples from WT (WT+LIC) or *Daf1*<sup>-/-</sup> (DAFKO+LIC) infected animals with  $10^6$  bacteria at 14 and 90 dpi. Bars represent standard error mean (SEM) of assays from a group of five to seven mice. Three pieces of each organ were analyzed in triplicate q-PCR and normalized to host cell number; \*\* $p < 0.01$ , <sup>ns</sup> $p > 0.05$ . **B–C)** Immunohistochemistry with antiserum specific for LipL32 (x200) of kidney sections of uninfected (WT+PBS and DAFKO+PBS) and infected WT (WT+LIC) and *Daf1*<sup>-/-</sup> (DAFKO+LIC) animals at 14 and 90 dpi. Arrows indicate representative positive foci. doi:10.1371/journal.pone.0102860.g002





**Figure 3. LIC-induced chronic nephritis produces renal fibrosis. A–B)** Renal collagen deposition (indicated by arrows) was analyzed by Masson's trichrome (MS) and Picro sirius red (PS) staining in uninfected (WT+PBS and DAFKO+PBS) and infected (WT+LIC and DAFKO+LIC) animals at 90 dpi (x200). **C)** Fibrosis score of WT (WT+PBS and WT+LIC) and  $Daf1^{-/-}$  (DAFKO+PBS and DAFKO+LIC) animals. Mean fibrosis score is represented by a straight line, \* $p < 0.05$ , \*\* $p < 0.01$ ,  $^{ns} p > 0.05$ . **D)** Quantitative measurement of pro-collagen I mRNA in kidney samples from uninfected or infected animals at 90 dpi. Bars represent the standard error of the mean (SEM) of assays from a group of five mice. Three pieces of each organ were analyzed in triplicate for q-PCR and normalized to host  $\beta$ -actin expression; \* $p < 0.05$ ,  $^{ns} p > 0.05$ . doi:10.1371/journal.pone.0102860.g003

and  $p < 0.01$ , respectively, Figure 3 A–C), involving all animals in correlation with the higher inflammation observed but in contrast to the low *Leptospira* presence at 90 dpi.

The levels of pro-collagen I mRNA were similarly increased in both groups of infected mice compared with uninfected animals at 90 dpi (Figure 3 D,  $p < 0.05$ ).

#### *Leptospira interrogans*-induced humoral response

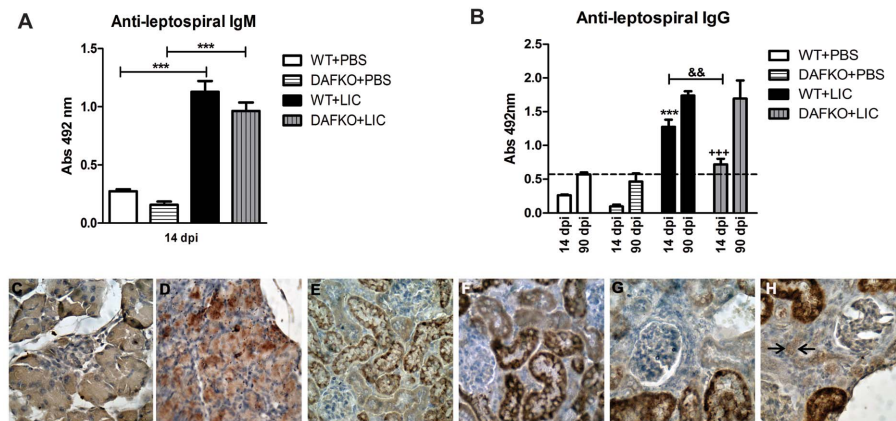
Anti-leptospiral IgM levels in serum samples of  $Daf1^{-/-}$  infected mice at 14 dpi were higher than in uninfected mice (Figure 4 A,  $p < 0.001$ ), but similar to WT mice. In contrast, the IgG-specific humoral immune response was higher in WT than in the  $Daf1^{-/-}$  infected group at 14 dpi, but reached similarly high values in the infected groups at 90 dpi (Figure 4 B,  $p < 0.01$ ). In order to study if anti-leptospiral antibody production and enhanced complement activation contributed to kidney damage, we analyzed the membrane attack complex (MAC) tissue

distribution by IHC and observed minimal MAC presence in  $Daf1^{-/-}$  infected mice at 90 dpi (Figure 4 C–H).

#### Chronic fibrosis in $Daf1^{-/-}$ LIC-infected mice correlates with myofibroblast activation and enhanced Gal-3 expression

Next, we investigated whether the observed chronic fibrosis was accompanied by myofibroblast activation and enhanced Gal-3 expression, as observed in models of renal fibrosis [29]. Enhanced  $\alpha$ -SMA expression was observed only in  $Daf1^{-/-}$  infected mice (Figure 5 A). In contrast, both WT and  $Daf1^{-/-}$  infected mice showed enhanced Gal-3 expression in the renal tissue of infected mice when compared with the uninfected control group by IHC analysis (Figure 5 A). The analysis by qPCR showed significantly higher values only for  $Daf1^{-/-}$  infected mice (Figure 5 B–C,  $p < 0.05$ ).





**Figure 4. Anti-leptospiral antibodies followed by enhanced complement activation in *Daf1*<sup>-/-</sup> mice suggest a minimal contribution to kidney damage.** **A)** Total anti-leptospiral IgM from serum samples of uninfected and infected animals at 14 dpi was analyzed by ELISA. Bars represent standard error mean (SEM) of assays from a group of five to seven mice; \*\*\* $p < 0.001$ . **B)** Total anti-leptospiral IgG from serum samples of uninfected and infected animals at 14 and 90 dpi was analyzed by ELISA. Bars represent the SEM of assays from a group of five to seven mice; \*\*\* $p < 0.001$  with respect to WT+PBS at 14 dpi; +++ $p < 0.001$  with respect to DAFKO+PBS at 14 dpi; && $p < 0.01$  between both WT and *Daf1*<sup>-/-</sup> LIC-infected groups. Values under the baseline (dashed line) are considered negligible. Immunohistochemistry with antiserum specific for MAC (membrane attack complex) at 90 dpi ( $\times 200$ ). **C)** Uninfected pancreas as the negative control, **D)** coxsackievirus B3-infected pancreas as the positive control, **E)** WT+LIC without **(E)** or with anti-MAC **(F)**, DAFKO+LIC without **(G)** or with anti-MAC **(H)**. Only in panel H there is minimal, positive labeling in interstitial cells indicated by arrows. Samples were treated according to Abcam's suggested protocol including unmasking. Unmasking usually strongly increases the staining of kidney acinar cells which are rich in endogenous peroxidase, but this staining is intracytoplasmic. doi:10.1371/journal.pone.0102860.g004

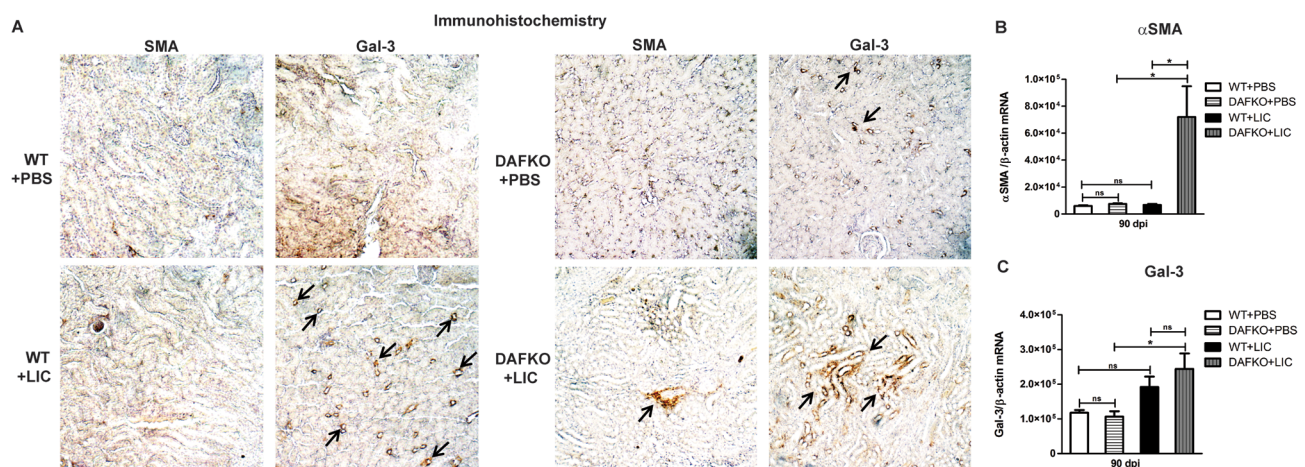
#### Cytokine levels in renal chronic fibrosis triggered by LIC infection

Previous studies have implicated TGF- $\beta$ 1 as an important mediator of renal fibrosis [2,29]. However, TGF- $\beta$ 1 mRNA expression was similar in uninfected and infected mice at 90 dpi (Figure 6 A). Meanwhile, WT mice showed higher IL-4 mRNA expression than uninfected mice, while *Daf1*<sup>-/-</sup> infected mice showed lower levels compared to *Daf1*<sup>-/-</sup> uninfected animals (Figure 6 B,  $p < 0.001$  and  $p < 0.01$ , respectively). IL-13 mRNA expression was up-regulated in both groups of infected mice (Figure 6 C,  $p < 0.05$ ). Significant down-regulation of IL-12 was

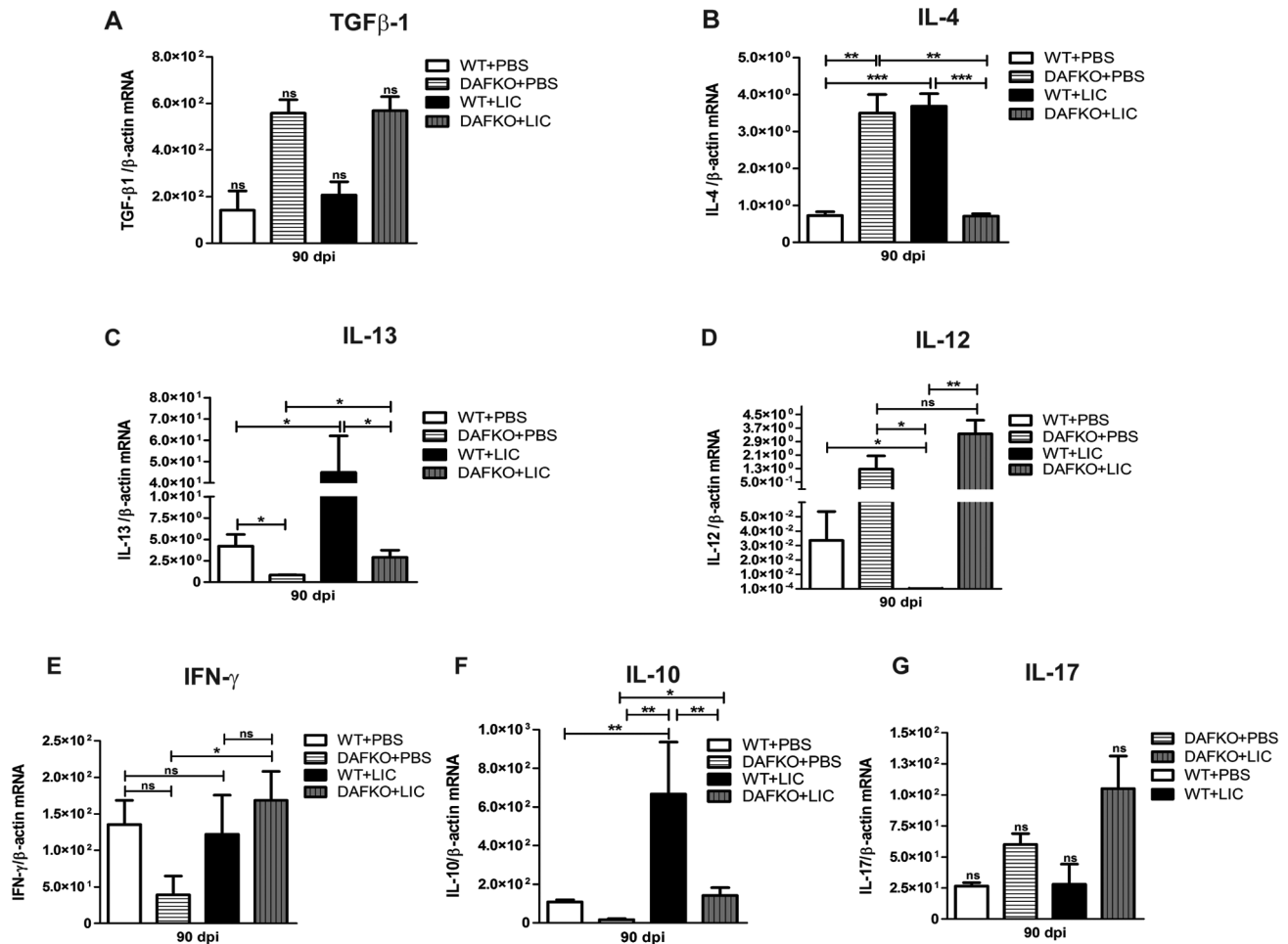
observed in infected WT mice ( $p < 0.05$ ); meanwhile *Daf1*<sup>-/-</sup> mice showed similar levels with and without infection (Figure 6 D). Significant up-regulation of IFN- $\gamma$  was observed only in *Daf1*<sup>-/-</sup> + LIC animals (Figure 6 E,  $p < 0.05$ ). Finally, although elevated IL-10 mRNA levels were found in both WT and *Daf1*<sup>-/-</sup> LIC-infected mice (Figure 6 F,  $p < 0.01$  and  $p < 0.05$ , respectively), IL-17 expression was not different among the groups (Figure 6 G).

#### Discussion

The kidney is the primary target of *Leptospira* during both subacute and chronic infection [5,30]. In our model of LIC



**Figure 5. Chronic fibrosis in *Daf1*<sup>-/-</sup> +LIC mice induces myofibroblast activation and enhanced galectin-3 expression.** **A)** Immunohistochemistry of kidney sections from uninfected (WT+PBS and DAFKO+PBS) and LIC-infected (WT+LIC and DAFKO+LIC) mice with antiserum specific for  $\alpha$ -smooth muscle actin ( $\alpha$ -SMA) or galectin-3 (Gal-3) at 90 dpi ( $\times 200$ ). Arrows indicate foci of antigen expression. Quantitative measurement of  $\alpha$ -SMA **(B)** and Gal-3 **(C)** mRNA expression in kidney samples from uninfected (WT+PBS and DAFKO+PBS) and infected (WT+LIC and DAFKO+LIC) animals at 90 dpi. Bars represent the SEM of assays from a group of five to seven mice. Three pieces of each organ were analyzed in triplicate for q-PCR and normalized to host  $\beta$ -actin expression; \* $p < 0.05$ , <sup>ns</sup> $p > 0.05$ . doi:10.1371/journal.pone.0102860.g005



**Figure 6. Cytokine levels in renal interstitial fibrosis triggered by LIC infection.** Quantitative measurement of TGF-β1 (A), IL-4 (B), IL-13 (C), IL-12 (D), IFN-γ (E), IL-10 (F) and IL-17 (G) mRNA expression in kidney samples from uninfected (WT+PBS and DAFKO+PBS) or infected (WT+LIC and DAFKO+LIC) animals at 90 dpi. Bars represent the SEM of assays from a group of five to seven mice. Three pieces of each organ were analyzed in triplicate for q-PCR and normalized to host β-actin expression; \* $p < 0.05$ , \*\* $p < 0.01$ , \*\*\* $p < 0.001$ , ns $p > 0.05$ . doi:10.1371/journal.pone.0102860.g006

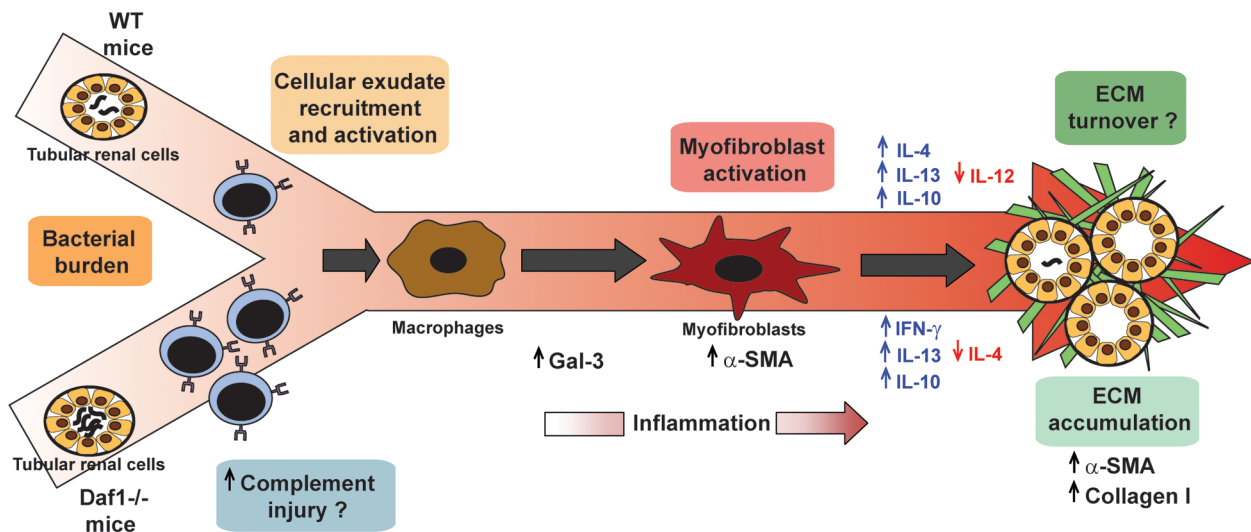
infection in C57BL/6J mice, we observed that all animals had mild to moderate renal inflammation at 14 dpi. However, it was not the typical interstitial nephritis described in guinea pigs, dogs or humans [30], and was only discrete to mild during the chronic phase in a small percentage of animals. This reduction in inflammation over time correlated with a significant decrease in the bacterial burden at 90 dpi and inversely correlated with levels of both IgM and IgG. Our results are relatively similar to those reported by others, where only some C57BL/6J mice had a score of 2 for inflammation at 28 dpi [31]. Interestingly, such restricted susceptibility was enough to trigger enhanced transcription of procollagen I at 90 dpi that correlated with a discrete degree of fibrosis present in some infected animals. Taken together, it was concluded that the C57BL/6J strain of mice is susceptible to LIC infection, which induces acute and chronic inflammation, and eventually translates into mild fibrosis correlated to some degree with the bacterial burden.

In order to explore the role of *Daf1* in a LIC-induced murine infection, we studied the wild-type C57BL/6J strain of mice and the transgenic *Daf1*<sup>-/-</sup> mice comparatively. The absence of *Daf1* meant that LIC-infected mice showed higher mortality, as well as a greater kidney bacterial burden in the acute stage compared with WT animals. Moreover, whereas the kidney bacterial burden

decreased at 90 dpi to barely detectable levels as in WT mice, the inflammation score rose. Interestingly, such differences correlated with a clearly higher level of fibrosis in the *Daf1*<sup>-/-</sup> mice.

In the present work, only partial pathogenic mechanisms were unveiled. There was a significantly enhanced bacterial burden in the kidneys of *Daf1*<sup>-/-</sup> mice during acute infection but a similar burden during the chronic stage. In comparison with WT, in previous studies, *Daf1*<sup>-/-</sup> mice have shown higher acute viral load in murine CMV [32] but lower viral load in acute and chronic LCMV infection [33] or bacteremia after *Pneumococcal pneumonia* infection [34]. Reduced parasite load was also found in chronic *Trypanosoma cruzi*-infected mice [35]. It is not clear why *Daf1*<sup>-/-</sup> mice showed an early drop in survival and a higher bacterial burden at the start of the leptospiruric phase. It may partially be due to the reduced specific acute humoral response observed in *Daf1*<sup>-/-</sup> mice since previous studies have demonstrated that this plays a major role [36]; however, our study does not exclude the possibility that the *Daf1* molecule may play a more direct role, especially after the demonstrated cross-talk between complement, innate immune elements and inflammation [37,38]. In this regard, a recent *ex vivo* study found that initial engagement of *Daf1* by *E. coli* strains expressing Dr adhesins (and causing pyelonephritis) would allow their escape from phagolysosomal





**Figure 7. Model of leptospiral-induced murine chronic nephritis and renal fibrosis.** Upon LIC colonization of proximal renal tubules of either C57BL/6J wild-type (WT) or *Daf1*<sup>-/-</sup> mice, cellular exudate recruitment and activation occurs and precedes the arrival of macrophages, which after stimulation produce mediators such as galectin-3 (Gal-3) that activate quiescent fibroblasts and convert them into an  $\alpha$ -SMA<sup>+</sup> myofibroblast population. Myofibroblasts produce several molecules and orchestrate the production of ECM components and their extracellular assembly. In WT mice, down-regulation of IL-12 as well as up-regulation of IL-4, IL-10 and profibrotic cytokines such as IL-13 contributes to ECM accumulation. Of note, LIC-infected *Daf1*<sup>-/-</sup> mice have a higher bacterial burden at the acute stage of infection, but barely detectable bacterial burden, increased IL-13, IL-10 and IFN- $\gamma$  expression and decreased IL-4 expression during the chronic stages; these correlate with chronic inflammation, ECM deposition and renal fibrosis. Also, an alternative possibility is that the increased adaptive immune response against infection leads to the deposition of anti-leptospiral antibody followed by complement activation, which then contributes to kidney damage. doi:10.1371/journal.pone.0102860.g007

fusion, leading to non-destructive parasitism that allows bacteria to persist intracellularly [39]. The precise mechanism involved in our model will hopefully be clarified in future studies.

Previous studies have shown that outside membrane proteins (OMPs) from pathogenic leptospires are recognized by TLR2 of murine kidney tubular cells [40]. This recognition activates the transcription factor  $\kappa$ B (NF- $\kappa$ B) and the mitogen-activated protein kinase (MAPK) pathway, triggering early inflammation and leukocyte recruitment [41] and later *in vitro* HeK-2 cell production of collagens through activation of the TGF- $\beta$ 1/Smad3 pathway [42]. However, by using several transgenic mice, a very recent study elegantly showed that TLR and NLR receptors as well as T lymphocytes are not required to generate *Leptospira*-induced renal fibrosis. Instead, the iNOS enzyme, known to play a role in *Leptospira*-induced interstitial nephritis [43,44], was associated with the induction of renal fibrosis [45]. Given that in *Daf1*<sup>-/-</sup> mice the increase in inflammation and fibrosis was not correlated with an increase in the bacterial burden present in the kidneys of chronically infected mice, we conclude that the major factors driving fibrosis in this model rely on the presence of leptospires during the early stages, and on the host response in the chronic phase without excluding a role for enhanced complement-mediated injury and/or reduced turnover of extracellular matrix components.

Gal-3 expression and infiltration of macrophages occurs early in LIC-induced nephritis and remains up-regulated, as shown in the UUO model [28]. However, enhanced  $\alpha$ -SMA expression was observed only in the kidneys of infected *Daf1*<sup>-/-</sup> mice. Both Gal-3 and  $\alpha$ -SMA expression levels remain higher in the UUO model [28], continuously increasing macrophage recruitment, and probably justifying the clearly higher level of renal fibrosis observed in the UUO model by directly acting through TGF- $\beta$ 1-mediated myofibroblast activation and extracellular matrix production [46]. However, since it has been shown that Gal-3

forms lattices that promote cell-surface residence or the retention of cytokine and growth factor receptors, including receptors for TGF- $\beta$ 1, by interfering with their endocytosis, and that this retention of receptors leads to increased signaling [47], it should also be considered that enhanced levels of Gal-3 could modulate fibrosis indirectly. In addition, TGF- $\beta$ 1-independent mechanisms of renal fibrosis have also been reported in the UUO model [48]. Regarding IL-4, this cytokine it has been described in humans as a profibrotic cytokine promoting fibrocyte differentiation [2], whereas it has an inhibitory effect in mice [49] and therefore may explain the low levels at 90 dpi in *Daf1*<sup>-/-</sup> mice. Hopefully, future studies will clarify if it has a role in WT mice. As expected, increased IL-13 levels were detected in both WT and *Daf1*<sup>-/-</sup> infected mice at 90 dpi, since this cytokine has been reported to be a major profibrotic molecule that promotes fibrocyte differentiation [50]. The high levels of IFN- $\gamma$ , IL-12 and IL-17 (although not significant) observed in the *Daf1*<sup>-/-</sup> mice are probably a major contributor to the T-cell hyper-responsiveness of these mice [19,22] and therefore may explain the similar or lower levels observed in the WT mice. IL-10 levels were elevated in both WT and *Daf1*<sup>-/-</sup> infected mice. Interestingly, early enhanced IL-10 expression has been shown in other murine models of leptospirosis [51] and has been linked to death in humans [52] and hamsters [53] infected with leptospires.

Based on the results of our experiments and very recent studies performed by others [45], it may be speculated that the presence of bacteria triggers the recruitment and activation of an early cellular exudate in the kidney [2]. It may be hypothesized that bacterial persistence contributes to non-resolving inflammation and a cellular exudate that sets the fibrogenic stage (priming) and triggers the activation and recruitment of extracellular matrix (ECM)-producing cells such as interstitial fibroblasts and circulating fibrocytes through Gal-3 and probably other molecules such as nitric oxide. Upon activation, ECM-producing cells assemble a

**Table 1.** Primers used in q-PCR assays.

Gene product	Primer	Primer sequence (5'-3')	Amplicon length (bp)
16S	F	CATTGATGTTTCGAATCATTTCAAA	331
	R	GAAACACGGACACCCAAAGTA	
Pro-collagen type I	F	TTCACCTACAGCACCCCTGTG	66
	R	GATGACTGTCTTGCCCAAGTT	
$\alpha$ -SMA	F	GCTCTGCCTTAGCACACAA	150
	R	GCCAGGGCTACAAGTTAAGG	
Gal-3	F	GACCACTGACGGTGCCCTAT	149
	R	GGGGTTAAAGTGAAGGCAA	
TGF- $\beta$ 1	F	TGCGCTTGACAGATTAAAA	82
	R	AGGTAACGCCAGGAATTGTTGCTA	
IFN- $\gamma$	F	CTTGGATATCTGGAGAACTGGC	234
	R	GCGCTGGACCTGTGGTTGTTGA	
IL-4	F	CATCGGCATTTTGAACGAGGTCA	240
	R	CTTATCGATGAATCCAGGCATCG	
IL-10	F	CCAGTTTTACCTGGTAGAAGTGATG	324
	R	TGTCTAGGTCCTGGAGTCCAGCAGACTCAA	
IL-12	F	ATGGCCATGTGGGAGCTGGAGAAAG	225
	R	GTGGAGCAGCAGATGTGAGTGGCT	
IL-13	F	GACCAGACTCCCCTGTGCAA	121
	R	TGGGTCCTGTAGATGGCATTG	
IL-17	F	ACCGCAATGAAGACCCTGAT	83
	R	TCCCTCCGATTGACACA	
$\beta$ -actin (DNA)	F	GGCTGTATCCCCTCCATCG	241
	R	CCAGTTGGTAACAATGCCATGT	
$\beta$ -actin (cDNA)	F	CGTCATCCATGGCGAACTG	60
	R	GCTTCTTTGCAGCTCCTTCGT	

doi:10.1371/journal.pone.0102860.t001

multicomponent, integrin-associated protein complex that integrates input from various fibrogenic signals and orchestrates the production of ECM components and their extracellular assembly. Multiple cellular and molecular events, such as tubular atrophy and microvascular rarefaction, may promote scar formation and ensure a vicious progression to end-stage kidney failure [54] (Figure 7). Taken together, our results demonstrate that *Daf1* plays a protective role in experimental leptospiral-induced fibrosis *in vivo*. Moreover, *Daf1*<sup>-/-</sup>+LIC animals constitute a suitable murine model for the study of leptospiral infections followed by the development of renal fibrosis.

It has been recently shown that asymptomatic renal colonization of leptospire in a region of high disease transmission is common, and may include people without serological or clinical evidence of recent infection with *Leptospira* persistence in the kidney [55]. However, the pathogenic significance of this finding, and particularly its connection with renal fibrosis, remains unknown [55]. Although scarce, some studies on human biopsies have shown an association between leptospirosis, interstitial nephritis and late-stage fibrosis [56]. In a recent case report of a young male patient, leptospirosis evolved to irreversible tubulointerstitial fibrosis that required chronic dialysis treatment [57]. In other studies of human biopsies, tubulointerstitial nephritis was associated indirectly with fibrosis based on increased collagen I, IV, TGF- $\beta$ 1 and Smad levels in the kidney, particularly when the disease was not treated with antibiotics [58]. In conclusion, there

are no data showing to what degree *Leptospira* infection impacts on the incidence of human CKD, but the fact that it is a major human zoonosis, is frequently undiagnosed, and has a major impact on low social-economic populations, our and other [47] results associating even low bacterial persistence with renal fibrosis strongly suggest that it could be higher than expected, making *Leptospira*-triggered fibrosis a neglected event in a neglected disease. This should encourage more studies in order to clarify this issue.

## Materials and Methods

### Bacteria

The virulent *Leptospira interrogans* serovar Copenhageni (LIC) strain Fiocruz L1-130 and the culture conditions used have been described previously [59].

### Ethics Statement

All animal experiments were in compliance with the Argentine animal protection Law 14346 “*Malos tratos y actos de crueldad a los animales*”. The ethics committee of the “*Instituto de Biotecnología y Biología Molecular, CONICET-UNLP*”, in agreement with the International Guiding Principles for Biomedical Research Involving Animals (NIH, 1985), did not raise any concerns and approved our research protocol (identification



number 001/12). All animals received water and food *ad libitum*. All efforts were made to minimize suffering.

### Animals and experimental design

C57BL/6J wild-type or C57BL/6J Dapl<sup>-/-</sup> mice, aged 3–4 weeks, were injected intraperitoneally (ip) with 0.2 ml of PBS (uninfected control group) or 0.2 ml of PBS containing 10<sup>6</sup> LIC strain Fiocruz L1-130. Mice were monitored daily and euthanized by CO<sub>2</sub> overdose at 14 and 90 dpi (5–7 mice were used for each time point) and their blood and kidneys were then harvested. Routinely, one part was frozen at –80°C for further studies and the other was fixed with buffered 4% paraformaldehyde for histological examination and immunoperoxidase labeling. Mortality of C57BL/6J Dapl<sup>-/-</sup> LIC-infected mice at 3 or 4 dpi was unexpected and presented no previous signs.

### Histopathology and immunohistochemistry

Nephritis was graded blindly by a pathologist on a scale of 0–4 in a whole longitudinal section of the organ following previously published criteria for scoring kidney injury present in leptospirosis [31]. The PS technique was carried out as previously described [60,61,62]. Digital image analysis was used to quantify the amount of red-stained collagen fibers as previously described [28] using a Nikon E200 microscope with a Tucsen TCC 5.0 digital camera and the software provided by the manufacturer. The IHC procedure have been previously described [43] using anti  $\alpha$ -SMA, (Clone 1A4, Dako), Gal-3 (Clone M3/38), MAC (Abcam 55811) and an anti LipL32 (a gift from Dr Nascimento, Butantan Institute). Acute necrotizing pancreatitis was used as a positive control for the MAC IHC [63,64].

### DNA-RNA isolation and RT-PCR

Total DNA or RNA was isolated from the kidney by mechanical homogenization and Trizol (Invitrogen), as recommended by the manufacturer. The DNA or RNA was quantified with a Nanodrop spectrophotometer ND-1000. Prior to cDNA synthesis, DNase treatment was performed with an RNasefree

DNase Kit (Qiagen). cDNA was synthesized from 500 ng of total RNA with 15 mM of random hexamers and MMLV reverse transcriptase (Promega), according to the manufacturer's instructions.

### Real-time PCR

The q-PCR studies were performed with a Line-Gene K instrument and software (Bioer). The 5x HOT FIREPol EvaGreenqPCR Mix Plus was used for all reactions, following the manufacturer's instructions. Standard cDNA samples with 10-fold serial dilutions were used for PCR efficiency calculations. Cycle threshold (Ct) values were obtained for each individual reaction, and the Ct of the host-expressed  $\beta$ -actin was subtracted to obtain pro-collagen type I, SMA, Gal-3, TGF- $\beta$ 1, IL-4, IL-10, IL-12, IL-13, IL-17 and IFN- $\gamma$  normalized values, respectively [35,43]. To obtain bacterial burden values, 16SDNA bacterial gene was amplified and the number of bacteria was referred to that of the host cells [35]. The primer sequences and sizes of the amplified fragments are shown in Table 1.

### ELISA

Detection of total IgM and IgG-specific antibodies against *Leptospira* was performed as described previously [43].

### Statistical analysis

Data were expressed as the mean+S.E.M. and were analyzed by one-way analysis of variance (ANOVA) followed by Bonferroni multiple comparison test to determine significant differences between groups. *p* values <0.05 were considered statistically significant.

### Author Contributions

Conceived and designed the experiments: MFF RMG. Performed the experiments: MFF ES LA MC GP WCS RMG. Analyzed the data: MFF RD RMG. Contributed reagents/materials/analysis tools: WCS. Wrote the paper: MFF RMG.

### References

- Sugimoto H, LeBleu VS, Bosukonda D, Keck P, Taduri G, et al. (2012) Activin-like kinase 3 is important for kidney regeneration and reversal of fibrosis. *Nat Med* 18: 396–404.
- Liu Y (2011) Cellular and molecular mechanisms of renal fibrosis. *Nat Rev Nephrol* 7: 684–696.
- Coresh J, Selvin E, Stevens LA, Manzi J, Kusek JW, et al. (2007) Prevalence of chronic kidney disease in the United States. *JAMA* 298: 2038–2047.
- Jha V, Garcia-Garcia G, Iseki K, Li Z, Naicker S, et al. (2013) Chronic kidney disease: global dimension and perspectives. *Lancet* 382: 260–272.
- Faine S, Adler B, Bolin C, Perolat P (1999) *Leptospira* and Leptospirosis. Melbourne, Australia MediSci.
- Evangalista KV, Coburn J (2010) *Leptospira* as an emerging pathogen: a review of its biology, pathogenesis and host immune responses. *Future Microbiol* 5: 1413–1425.
- Maciel EA, de Carvalho AL, Nascimento SF, de Matos RB, Gouveia EL, et al. (2008) Household transmission of leptospira infection in urban slum communities. *PLoS Negl Trop Dis* 2: e154.
- Levett PN (2001) Leptospirosis. *Clin Microbiol Rev* 14: 296–326.
- Plank R, Dean D (2000) Overview of the epidemiology, microbiology, and pathogenesis of *Leptospira* spp. in humans. *Microbes Infect* 2: 1265–1276.
- Ko AI, Goarant C, Picaud M (2009) *Leptospira*: the dawn of the molecular genetics era for an emerging zoonotic pathogen. *Nat Rev Microbiol* 7: 736–747.
- Randall R, Cooper HK (1944) The Golden Hamster (*Cricetus Auratus*) as a Test Animal for the Diagnosis of Leptospirosis. *Science* 100: 133–134.
- Noguchi H (1918) A Comparative Study of Experimental Prophylactic Inoculation against *Leptospira Icterohaemorrhagiae*. *J Exp Med* 28: 561–570.
- Monahan AM, Callanan JJ, Nally JE (2009) Review paper: Host-pathogen interactions in the kidney during chronic leptospirosis. *Vet Pathol* 46: 792–799.
- Thiermann AB (1981) The Norway rat as a selective chronic carrier of *Leptospira icterohaemorrhagiae*. *J Wildl Dis* 17: 39–43.
- Adler B, Faine S (1976) Susceptibility of mice treated with cyclophosphamide to lethal infection with *Leptospira interrogans* Serovar pomona. *Infect Immun* 14: 703–708.
- Athanazio DA, Santos CS, Santos AC, McBride FW, Reis MG (2008) Experimental infection in tumor necrosis factor alpha receptor, interferon gamma and interleukin 4 deficient mice by pathogenic *Leptospira interrogans*. *Acta Trop* 105: 95–98.
- Lublin DM, Atkinson JP (1989) Decay-accelerating factor: biochemistry, molecular biology, and function. *Annu Rev Immunol* 7: 35–58.
- Leshner AM, Song WC (2010) Review: Complement and its regulatory proteins in kidney diseases. *Nephrology (Carlton)* 15: 663–675.
- Liu J, Miwa T, Hilliard B, Chen Y, Lambris JD, et al. (2005) The complement inhibitory protein DAF (CD55) suppresses T cell immunity in vivo. *J Exp Med* 201: 567–577.
- Miwa T, Maldonado MA, Zhou L, Sun X, Luo HY, et al. (2002) Deletion of decay-accelerating factor (CD55) exacerbates autoimmune disease development in MRL/lpr mice. *Am J Pathol* 161: 1077–1086.
- Miwa T, Maldonado MA, Zhou L, Yamada K, Gilkeson GS, et al. (2007) Decay-accelerating factor ameliorates systemic autoimmune disease in MRL/lpr mice via both complement-dependent and -independent mechanisms. *Am J Pathol* 170: 1258–1266.
- Bao L, Haas M, Pippin J, Wang Y, Miwa T, et al. (2009) Focal and segmental glomerulosclerosis induced in mice lacking decay-accelerating factor in T cells. *J Clin Invest* 119: 1264–1274.
- Cauvi DM, Toomey CB, Pollard KM (2012) Depletion of complement does not impact initiation of xenobiotic-induced autoimmune disease. *Immunology* 135: 333–343.
- An F, Li Q, Tu Z, Bu H, Chan CC, et al. (2009) Role of DAF in protecting against T-cell autoreactivity that leads to experimental autoimmune uveitis. *Invest Ophthalmol Vis Sci* 50: 3778–3782.

25. Heeger PS, Lalli PN, Lin F, Valujskikh A, Liu J, et al. (2005) Decay-accelerating factor modulates induction of T cell immunity. *J Exp Med* 201: 1523–1530.
26. Lalli PN, Strainic MG, Lin F, Medof ME, Heeger PS (2007) Decay accelerating factor can control T cell differentiation into IFN-gamma-producing effector cells via regulating local C5a-induced IL-12 production. *J Immunol* 179: 5793–5802.
27. Liu FT, Hsu DK, Zuberi RI, Kuwabara I, Chi EY, et al. (1995) Expression and function of galectin-3, a beta-galactoside-binding lectin, in human monocytes and macrophages. *Am J Pathol* 147: 1016–1028.
28. Henderson NC, Mackinnon AC, Farnworth SL, Kipari T, Haslett C, et al. (2008) Galectin-3 expression and secretion links macrophages to the promotion of renal fibrosis. *Am J Pathol* 172: 288–298.
29. Conway B, Hughes J (2012) Cellular orchestrators of renal fibrosis. *QJM* 105: 611–615.
30. Yang CW, Wu MS, Pan MJ (2001) Leptospirosis renal disease. *Nephrol Dial Transplant* 16 Suppl 5: 73–77.
31. Santos CS, Macedo JO, Bandeira M, Chagas-Junior AD, McBride AJ, et al. (2010) Different outcomes of experimental leptospirosis infection in mouse strains with distinct genotypes. *J Med Microbiol* 59: 1101–1106.
32. Bani-Ahmad M, El-Amouri IS, Ko CM, Lin F, Tang-Feldman Y, et al. (2011) The role of decay accelerating factor in the immunopathogenesis of cytomegalovirus infection. *Clin Exp Immunol* 163: 199–206.
33. Fang C, Miwa T, Shen H, Song WC (2007) Complement-dependent enhancement of CD8+ T cell immunity to lymphocytic choriomeningitis virus infection in decay-accelerating factor-deficient mice. *J Immunol* 179: 3178–3186.
34. Veninga H, Hoek RM, de Vos AF, de Bruin AM, An FQ, et al. (2011) A novel role for CD55 in granulocyte homeostasis and anti-bacterial host defense. *PLoS One* 6: e24431.
35. Solana ME, Ferrer MF, Novoa MM, Song WC, Gomez RM (2012) Decay-accelerating factor 1 deficiency exacerbates *Trypanosoma cruzi*-induced murine chronic myositis. *Muscle Nerve* 46: 582–587.
36. Chassin C, Picardeau M, Goujon JM, Bourhy P, Quellard N, et al. (2009) TLR4- and TLR2-mediated B cell responses control the clearance of the bacterial pathogen, *Leptospira interrogans*. *J Immunol* 183: 2669–2677.
37. Zhang X, Kimura Y, Fang C, Zhou L, Sfyroera G, et al. (2007) Regulation of Toll-like receptor-mediated inflammatory response by complement in vivo. *Blood* 110: 228–236.
38. Fang C, Zhang X, Miwa T, Song WC (2009) Complement promotes the development of inflammatory T-helper 17 cells through synergistic interaction with Toll-like receptor signaling and interleukin-6 production. *Blood* 114: 1005–1015.
39. Rana T, Hasan RJ, Nowicki S, Venkatarajan MS, Singh R, et al. (2014) Complement Protective Epitopes and CD55-Microtubule Complexes Facilitate the Invasion and Intracellular Persistence of Uropathogenic *Escherichia coli*. *J Infect Dis* 209: 1066–1076.
40. Yang CW, Hung CC, Wu MS, Tian YC, Chang CT, et al. (2006) Toll-like receptor 2 mediates early inflammation by leptospirosis outer membrane proteins in proximal tubule cells. *Kidney Int* 69: 815–822.
41. Hung CC, Chang CT, Tian YC, Wu MS, Yu CC, et al. (2006) Leptospirosis membrane proteins stimulate pro-inflammatory chemokines secretion by renal tubule epithelial cells through toll-like receptor 2 and p38 mitogen activated protein kinase. *Nephrol Dial Transplant* 21: 898–910.
42. Tian YC, Chen YC, Hung CC, Chang CT, Wu MS, et al. (2006) Leptospirosis outer membrane protein induces extracellular matrix accumulation through a TGF-beta1/Smad-dependent pathway. *J Am Soc Nephrol* 17: 2792–2798.
43. Pretre G, Olivera N, Cedola M, Haase S, Alberdi L, et al. (2011) Role of inducible nitric oxide synthase in the pathogenesis of experimental leptospirosis. *Microb Pathog* 51: 203–208.
44. Bandeira M, Santos CS, de Azevedo EC, Soares LM, Macedo JO, et al. (2011) Attenuated nephritis in inducible nitric oxide synthase knockout C57BL/6 mice and pulmonary hemorrhage in CB17 SCID and recombination activating gene 1 knockout C57BL/6 mice infected with *Leptospira interrogans*. *Infect Immun* 79: 2936–2940.
45. Fanton d'Andon M, Quellard N, Fernandez B, Ratet G, Lacroix-Lamande S, et al. (2014) *Leptospira interrogans* induces fibrosis in the mouse kidney through Inos-dependent, TLR- and NLR-independent signaling pathways. *PLoS Negl Trop Dis* 8: e2664.
46. Henderson NC, Sethi T (2009) The regulation of inflammation by galectin-3. *Immunol Rev* 230: 160–171.
47. Sato S, St-Pierre C, Bhaumik P, Nieminen J (2009) Galectins in innate immunity: dual functions of host soluble beta-galactoside-binding lectins as damage-associated molecular patterns (DAMPs) and as receptors for pathogen-associated molecular patterns (PAMPs). *Immunol Rev* 230: 172–187.
48. Ma LJ, Yang H, Gaspert A, Carlesso G, Barty MM, et al. (2003) Transforming growth factor-beta-dependent and -independent pathways of induction of tubulointerstitial fibrosis in beta6(-/-) mice. *Am J Pathol* 163: 1261–1273.
49. Niedermeyer M, Reich B, Rodriguez Gomez M, Denzel A, Schmidbauer K, et al. (2009) CD4+ T cells control the differentiation of Gr1+ monocytes into fibrocytes. *Proc Natl Acad Sci U S A* 106: 17892–17897.
50. Shao DD, Suresh R, Vakili V, Gomer RH, Pilling D (2008) Pivotal Advance: Th-1 cytokines inhibit, and Th-2 cytokines promote fibrocyte differentiation. *J Leukoc Biol* 83: 1323–1333.
51. Matsui M, Rouleau V, Bruyere-Ostells L, Goarant C (2011) Gene expression profiles of immune mediators and histopathological findings in animal models of leptospirosis: comparison between susceptible hamsters and resistant mice. *Infect Immun* 79: 4480–4492.
52. Kyriakidis I, Samara P, Papa A (2011) Serum TNF-alpha, sTNFR1, IL-6, IL-8 and IL-10 levels in Weil's syndrome. *Cytokine* 54: 117–120.
53. Vernel-Pauillac F, Goarant C (2010) Differential cytokine gene expression according to outcome in a hamster model of leptospirosis. *PLoS Negl Trop Dis* 4: e582.
54. Liu Y (2006) Renal fibrosis: new insights into the pathogenesis and therapeutics. *Kidney Int* 69: 213–217.
55. Ganoza CA, Matthias MA, Saito M, Cespedes M, Gotuzzo E, et al. (2010) Asymptomatic renal colonization of humans in the peruvian Amazon by *Leptospira*. *PLoS Negl Trop Dis* 4: e612.
56. Penna D, De Brito T, Pupo AA, Machado MM, Ayroza PA, et al. (1963) Kidney Biopsy in Human Leptospirosis. *Am J Trop Med Hyg* 12: 896–901.
57. Atasoy EM, Turhan V, Unver S, Evrenkaya TR, Yildirim S (2005) A case of leptospirosis presenting with end-stage renal failure. *Nephrol Dial Transplant* 20: 2290–2292.
58. Yang CW (2007) Leptospirosis renal disease: understanding the initiation by Toll-like receptors. *Kidney Int* 72: 918–925.
59. Pretre G, Lapponi MJ, Atzingen MV, Schattner M, Nascimento AL, et al. (2013) Characterization of LIC11207, a novel leptospirosis protein that is recognized by human convalescent sera and prevents apoptosis of polymorphonuclear leukocytes. *Microb Pathog* 56: 21–28.
60. Junqueira LC, Bignolas G, Brentani RR (1979) Picrosirius staining plus polarization microscopy, a specific method for collagen detection in tissue sections. *Histochem J* 11: 447–455.
61. Gomez RM, Castagnino CG, Berria MI (1992) Extracellular matrix remodelling after coxsackievirus B3-induced murine myocarditis. *Int J Exp Pathol* 73: 643–653.
62. Pereira MM, Andrade J, Marchevsky RS, Ribeiro dos Santos R (1998) Morphological characterization of lung and kidney lesions in C3H/HeJ mice infected with *Leptospira interrogans* serovar icterohaemorrhagiae: defect of CD4+ and CD8+ T-cells are prognosticators of the disease progression. *Exp Toxicol Pathol* 50: 191–198.
63. Sendler M, Dummer A, Weiss FU, Kruger B, Wartmann T, et al. (2013) Tumour necrosis factor alpha secretion induces protease activation and acinar cell necrosis in acute experimental pancreatitis in mice. *Gut* 62: 430–439.
64. Gomez RM, Lascano EF, Berria MI (1991) Murine acinar pancreatitis preceding necrotizing myocarditis after Cocksackievirus B3 inoculation. *J Med Virol* 35: 71–75.