

Intragastric Penetration of the Connecting Tube After Laparoscopic Adjustable Gastric Banding

Penetração Intra-Gástrica do Tubo Conector de Banda Gástrica Colocada por Via Laparoscópica



Samuel COSTA✉¹, Artur MACHADO¹, Bruno GONÇALVES¹, José Maia da COSTA², Raquel GONÇALVES¹
Acta Med Port 2017 Apr;**30(4):338-338** • <https://doi.org/10.20344/amp.7434>

Keywords: Gastroplasty; Laparoscopy; Postoperative Complications

Palavras-chave: Complicações Pós-Operatórias; Gastroplastia; Laparoscopia

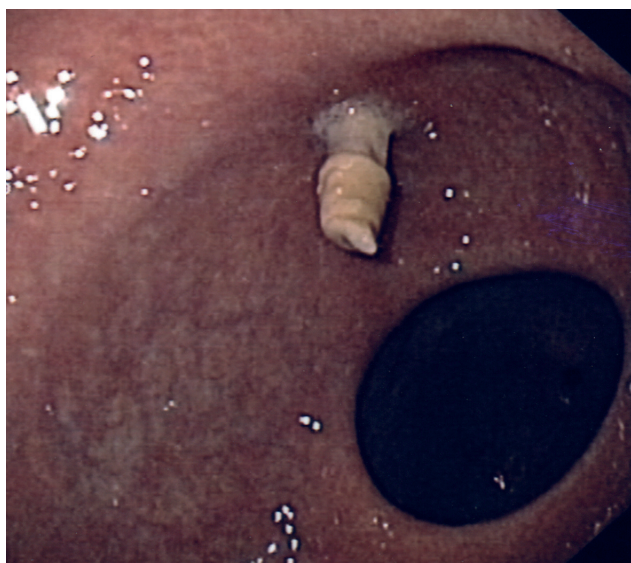


Figure 1 - Esophagogastroduodenoscopy

A 37-years-old woman with obesity grade II, hypertension and dyslipidemia was submitted to laparoscopic adjustable gastric banding (LAGB) in 2009. In 2013, because of a port site infection, the port was removed. Three months later she went to the emergency department for epigastric pain and vomiting. The abdominal computed tomography scan showed gastric distention with liquid/air and the esophagogastroduodenoscopy gastric band and connecting



Figure 2 - Gastric band and connecting tube

tube migration (Fig. 1).

Long-term complications resulted in a decrease of LAGB popularity. Migration of the gastric band occurs in up to 11%.¹ To the best of our knowledge this is the first case of connecting tube migration into the gastric antrum. We achieved endoscopic removal of the band and connecting tube without complications (Fig. 2). There is only one report of connecting tube migration to the gastric fundus and was managed surgically.²

The endoscopic removal of migrated gastric bands is a feasible (85% success rate), low complications (5.8%: mainly symptomatic pneumoperitoneum) procedure.³

REFERENCES

- Westling A, Bjurling K, Ohrvall M, Gustavsson S. Silicone adjustable gastric banding: disappointing results. *Obes Surg*. 1998;8:467-74.
- Dogan ÜB, Akin MS, Yalaki S, Akova A, Yılmaz C. Endoscopic management of gastric band erosions: a 7-year series of 14 patients. *Can J Surg*. 2014;57:106-11.
- Neto MP, Ramos AC, Campos JM, Murakami AH, Falcão M, Moura EH, et al. Endoscopic removal of eroded adjustable gastric band: lessons learned after 5 years and 78 cases. *Surg Obes Relat Dis*. 2010;6:423-7.

1. Gastroenterology Department. Hospital de Braga. Braga. Portugal.

2. Surgery Department. Hospital de Braga. Braga. Portugal.

✉ Autor correspondente: Samuel Costa. samuelcosta@hotmail.com

Recebido: 22 de janeiro de 2016 - Aceite: 03 de outubro de 2016 | Copyright © Ordem dos Médicos 2017

