



**Secção de Retina**  
**Serviço de Oftalmologia**  
**Director: Dr Fernando Vaz**



## **Case Presentation**

Luís Mendonça  
Nuno Gomes

# 44 year-old white female

Hx of progressive decrease VA OD



## Past Medical Hx:

### (i) Ocular

- Pathologic Myopia OU

OD -24.50 D

OS -25.50 D

- 2012...

CLE/cataract surgery? OU

### (ii) Systemic

- none

VA OD: 20/400

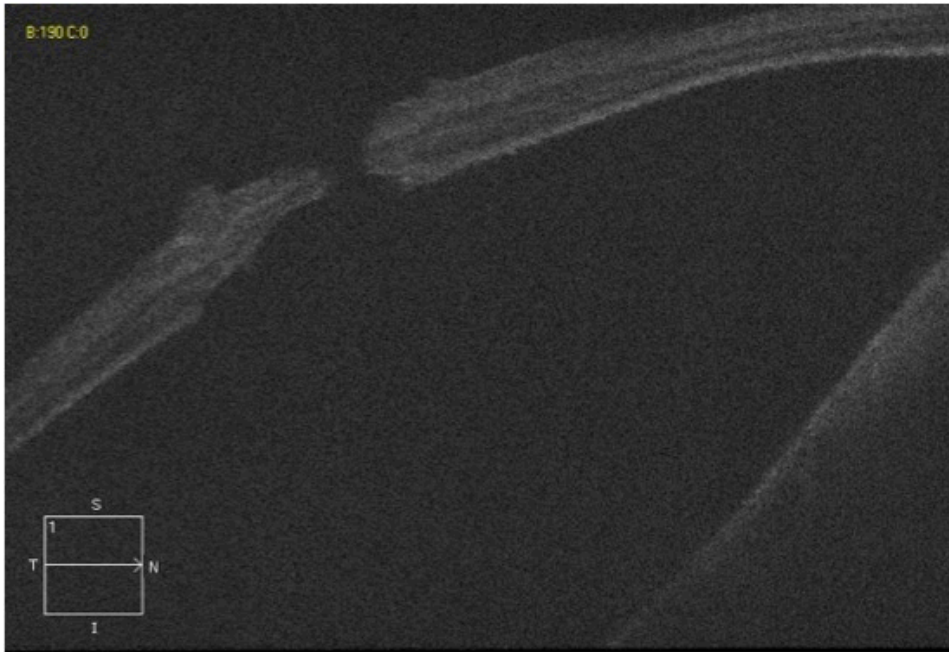
VA OS: 20/50

# 44 year-old white female

Hx of progressive decrease VA OD



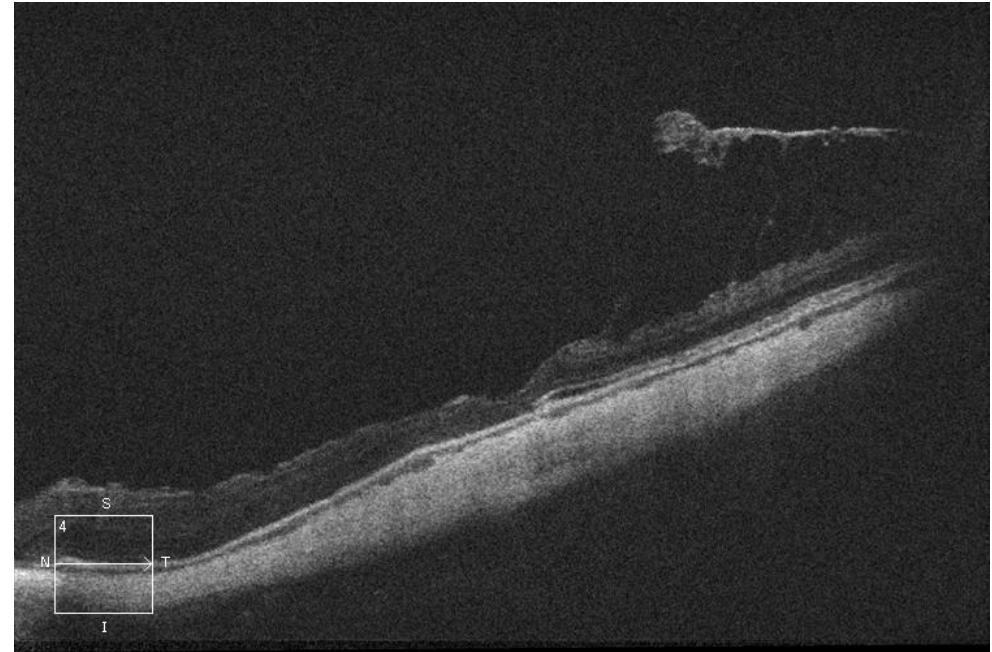
OD



20/400

Axial Length: 31.50 mm

OS



20/50

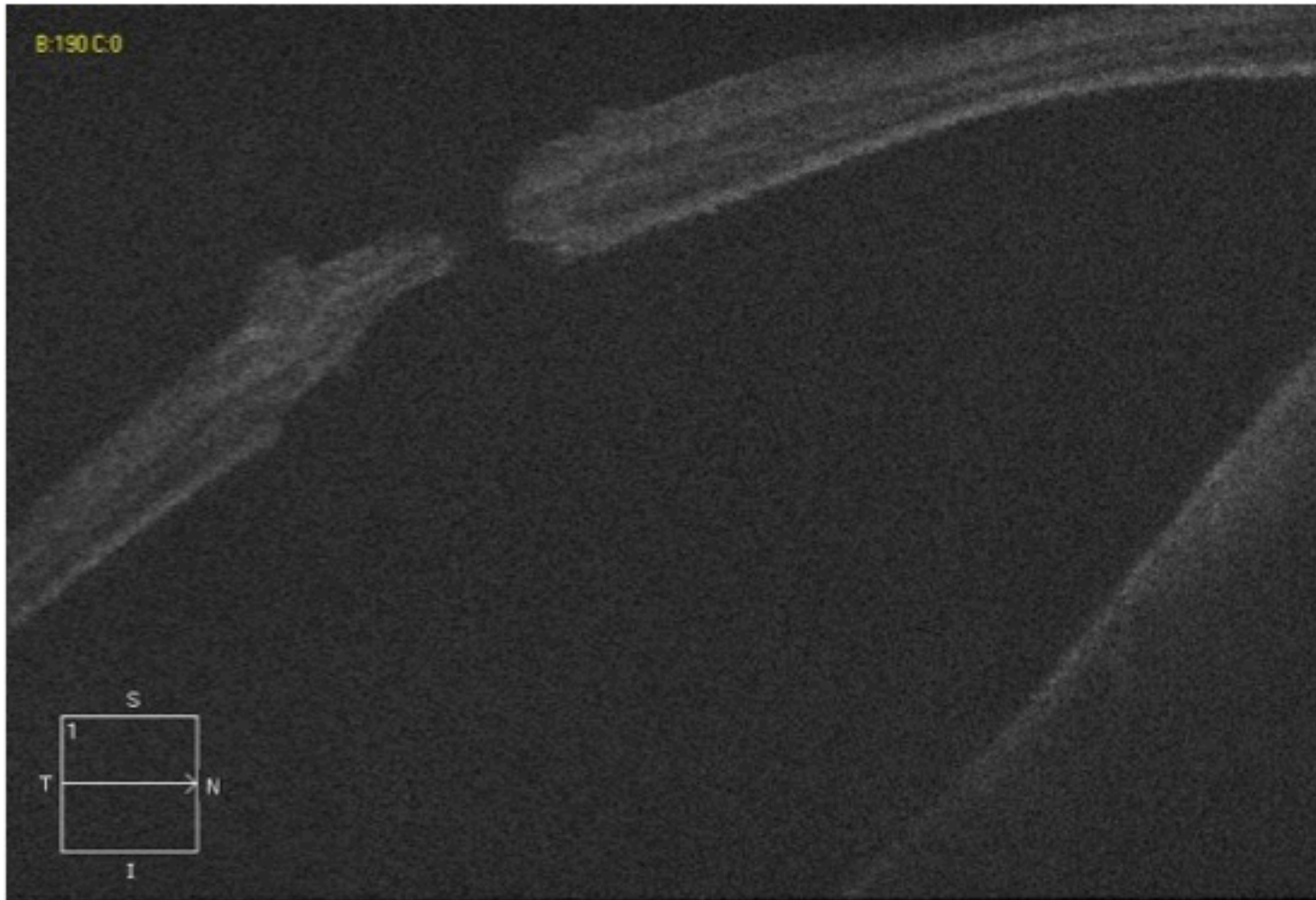
Axial Length: 33.00 mm

# 44 year-old white female

Hx of progressive decrease VA OD



OD



44 year-old white female

Hx of progressive decrease VA OD



OD

Myopic Macular Hole with  
Retinal Detachment

**Management?**

# 44 year-old white female

Hx of progressive decrease VA OD



## *Our way...*

- Vitrectomy
- ILM peeling

# 44 year-old white female

Hx of progressive decrease VA OD



## *Our way...*

- Vitrectomy
- ILM peeling
- Suprachoroidal Macular Buckling (Healon GV®)

# 44 year-old white female

Hx of progressive decrease VA OD



## *Our way...*

- Vitrectomy
- ILM peeling
- Suprachoroidal Macular Buckling (Healon GV®)
- Gas Tamponade ( $C_2F_6$  - 16%)

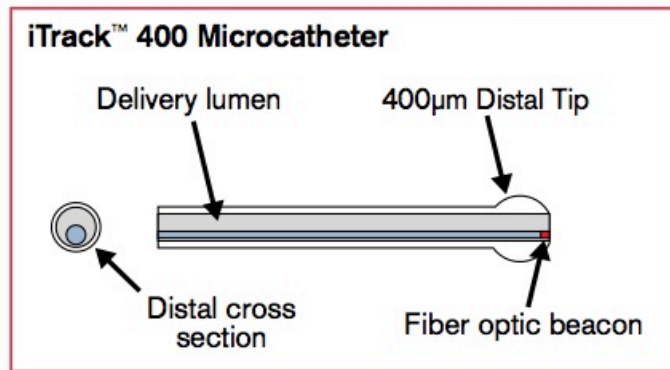


# Microcatheter iTrack 400<sup>®</sup>



## iTrack<sup>™</sup> 400 Microcatheter Technology:

The iTrack<sup>™</sup> 400 incorporates a composite microcatheter designed specifically to access micron-sized spaces within the eye. The composite design includes:



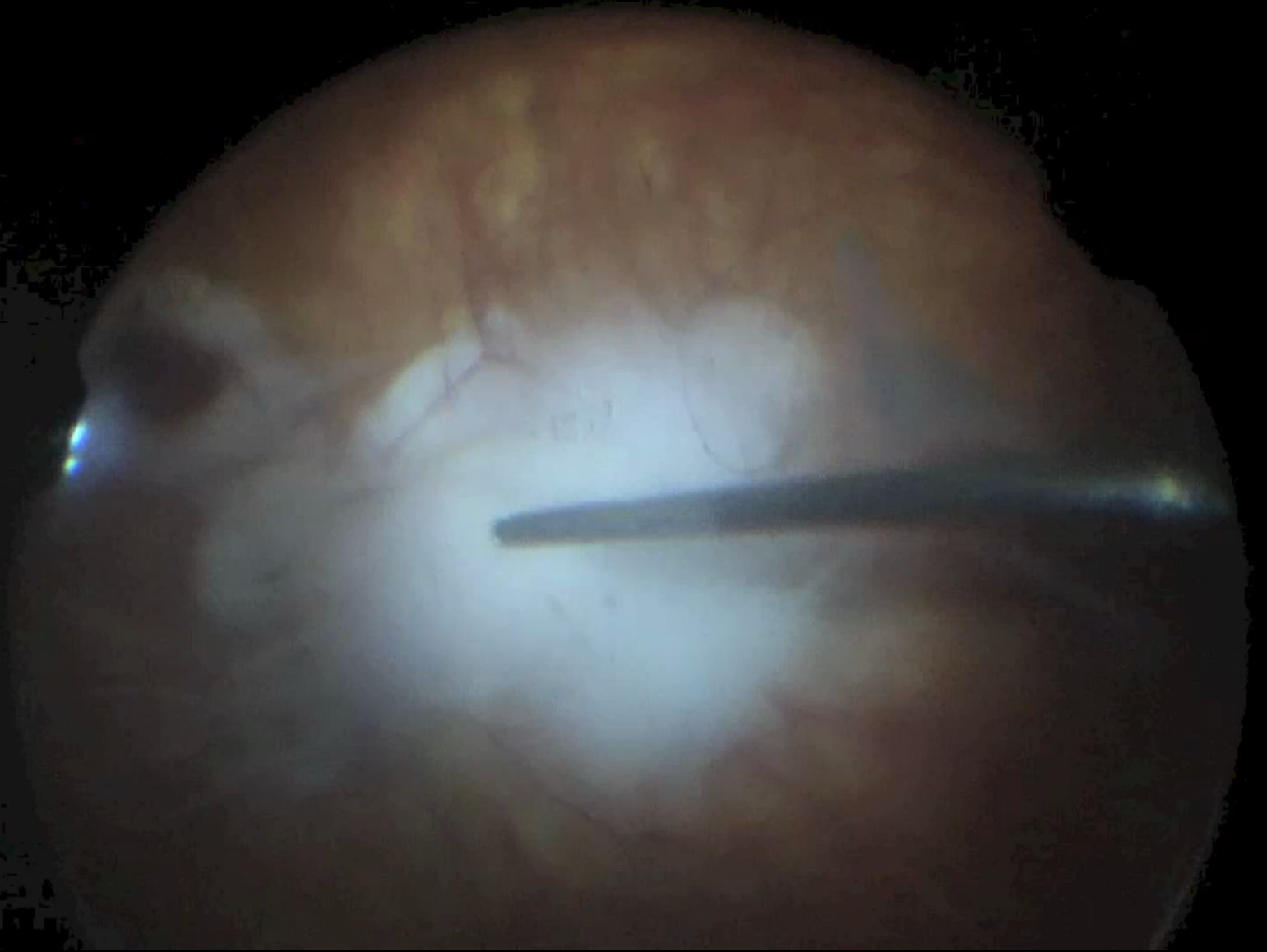
- Fluid infusion and aspiration lumen
- Optical fiber to illuminate the distal tip of the catheter for transretinal visualization at all times
- Atraumatic tip minimizes potential for tissue damage

## iTrack<sup>™</sup> gives you:

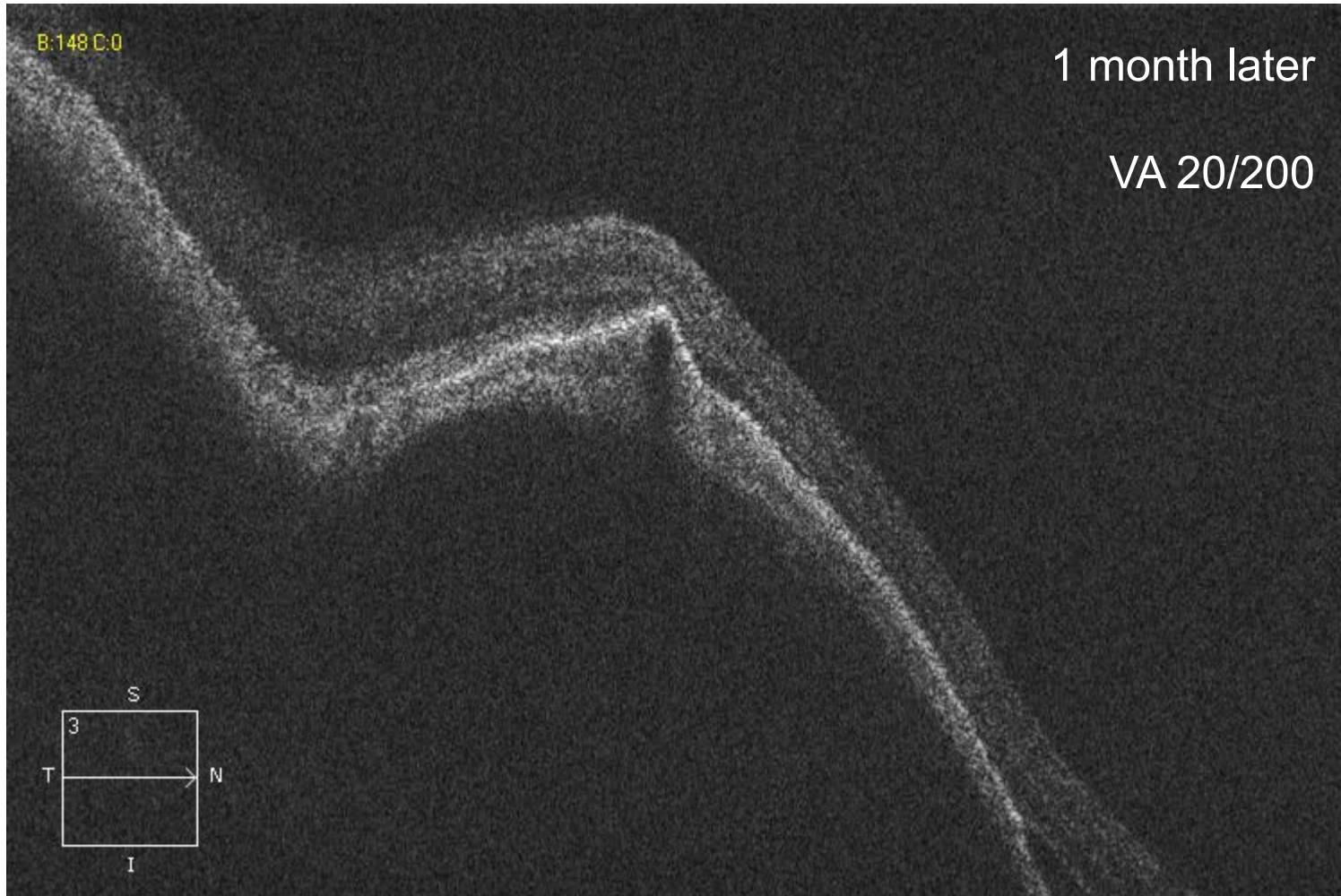
- An illuminated catheter tip that allows exceptional trackability
- A screw-type injection system that enables precise dispensing of sterile solutions and viscoelastics
- Lubricious coating that facilitates controlled catheter advancement
- Depth markings for precise insertion and delivery



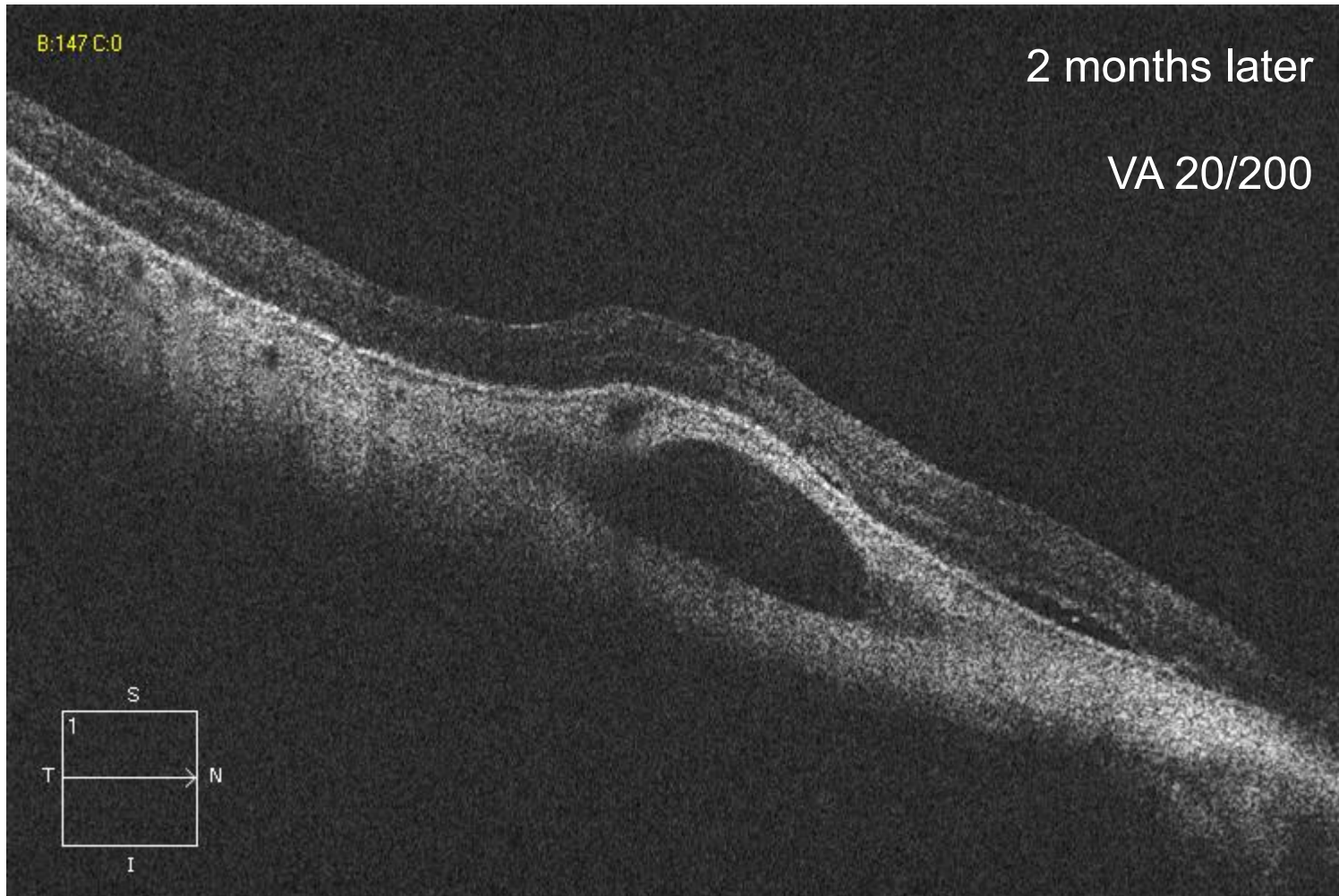
Surgery...



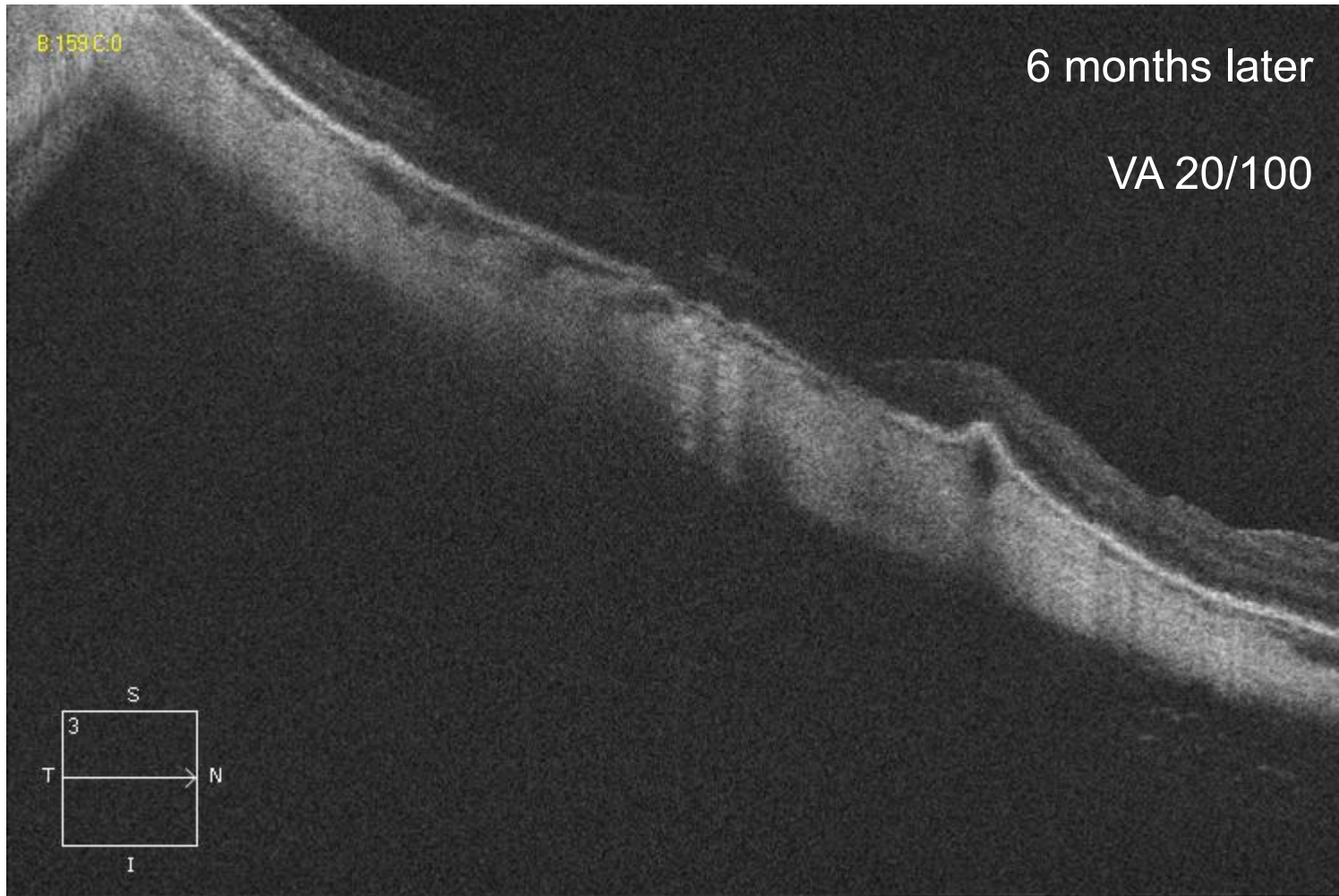
# Follow-up



# Follow-up



# Follow-up



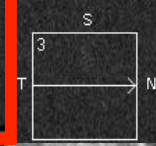
B:190 C:0

Pre-op  
VA 20/400



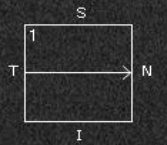
B:148 C:0

1 month post-op  
VA 20/200



B:147 C:0

2 months post-op  
VA 20/200



B:159 C:0

6 months post-op  
VA 20/100

