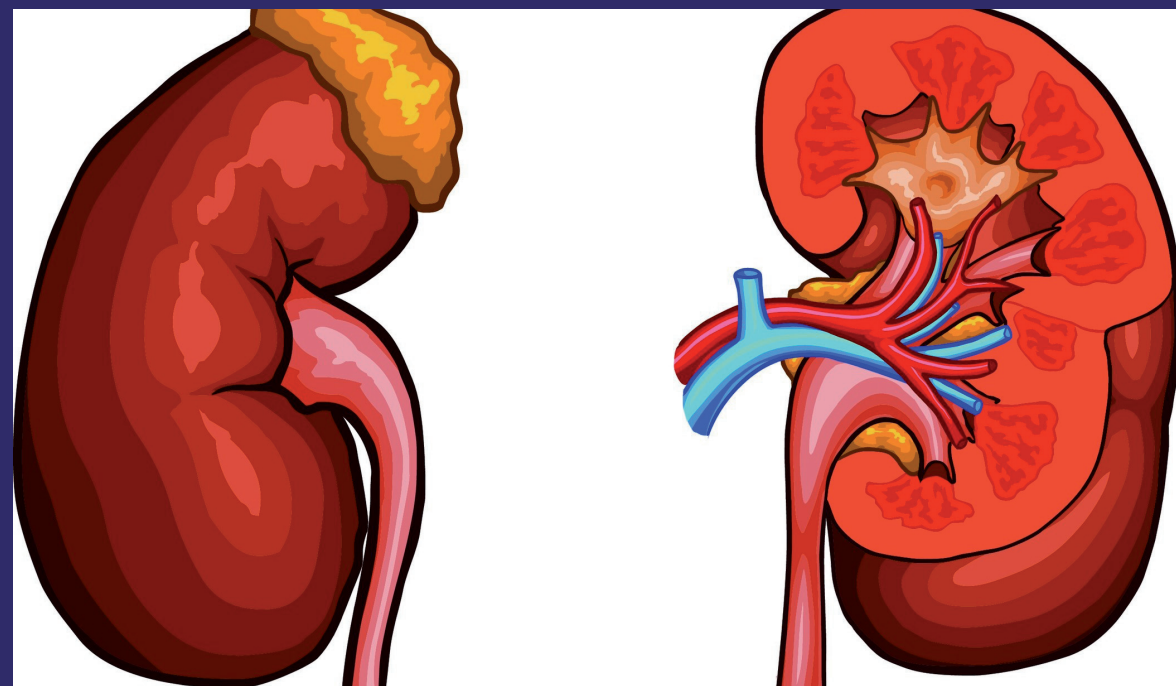


Many researches have proven that there exists a complex association between progressive renal damage and hypercholesterolemia. However, there was little information about the early effect of hypercholesterolemia on the kidney. Additionally, although there is a growing insight into the causes and mechanisms of these diseases, preventive and therapeutic measures are still few. Hence, the aim of this study is to determine the acute and sub-acute effects of high cholesterol diet on the kidney, and to examine the protective role of tualang honey against these disease.

Renoprotective effects of Tualang Honey

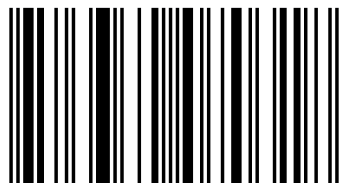


Zenab B. Hamad Mohamed  
Roslina Abdul Rahim  
Naznin Muhammad

Dr Zenab B. Hamad Mohamed obtained Master of Medical Science (Physiology) in 2017 from Kulliyah of Medicine, International Islamic University Malaysia. She was supervised by Dr Roslina Abdul Rahim and co-supervised by Prof. Dr. Naznin Muhammad and Dr Nor Zamzila Abdullah.

## Effect of Tualang Honey in Acute Kidney Injury Animal Model

Mohamed, Rahim, Muhammad



978-3-330-07031-8

LAP **LAMBERT**  
Academic Publishing