

2-21-2020

## Antagonistic Regulation of Circadian Output and Synaptic Development by JETLAG and the DYSCHRONIC-SLOWPOKE Complex

Angelique Lamaze  
*Thomas Jefferson University*

James E.C. Jepson  
*Thomas Jefferson University*

Oghenerukevwe Akpoghiran  
*Thomas Jefferson University*

Kyunghee Koh  
*Thomas Jefferson University*

Follow this and additional works at: [https://jdc.jefferson.edu/departement\\_neuroscience](https://jdc.jefferson.edu/departement_neuroscience)

 Part of the [Developmental Neuroscience Commons](#), and the [Neurosciences Commons](#)

[Let us know how access to this document benefits you](#)

### Recommended Citation

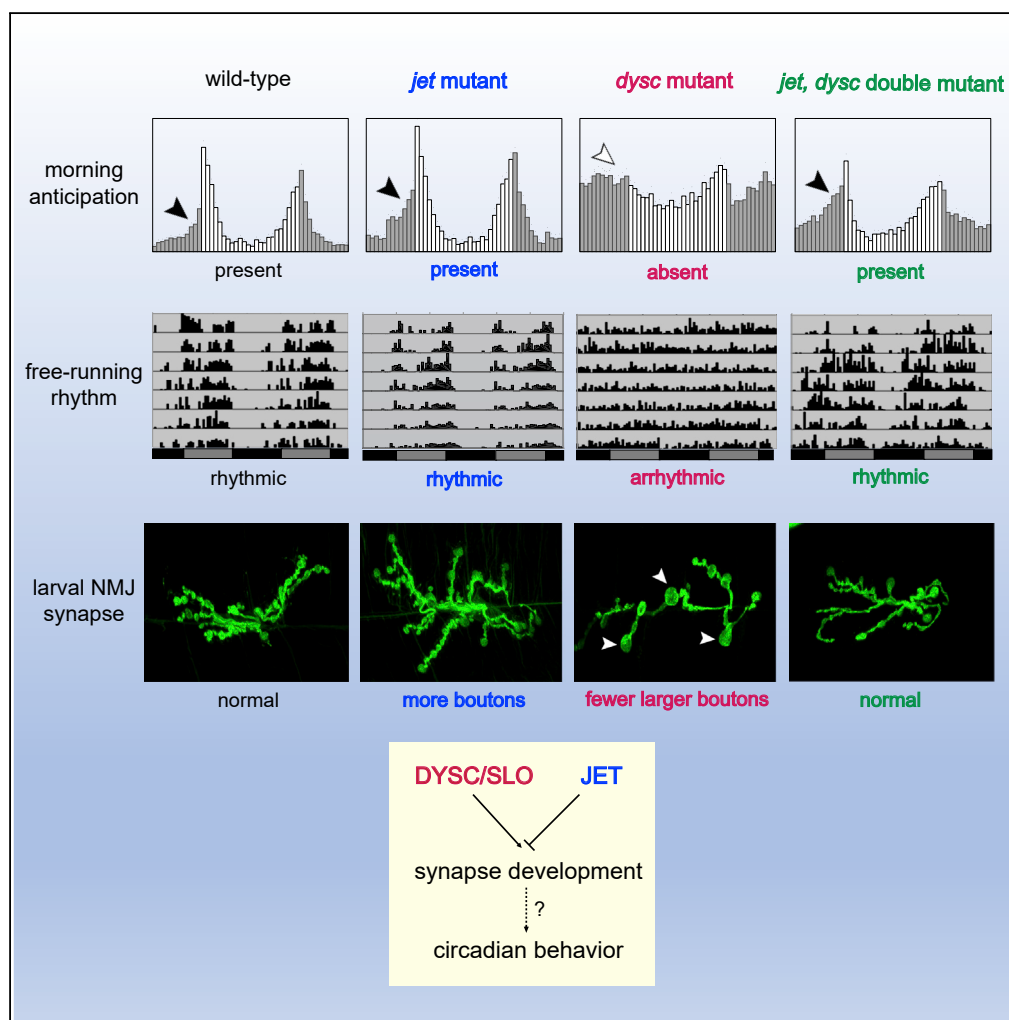
Lamaze, Angelique; Jepson, James E.C.; Akpoghiran, Oghenerukevwe; and Koh, Kyunghee, "Antagonistic Regulation of Circadian Output and Synaptic Development by JETLAG and the DYSCHRONIC-SLOWPOKE Complex" (2020). *Department of Neurosciences Faculty Papers*. Paper 46.

[https://jdc.jefferson.edu/departement\\_neuroscience/46](https://jdc.jefferson.edu/departement_neuroscience/46)

This Article is brought to you for free and open access by the Jefferson Digital Commons. The Jefferson Digital Commons is a service of Thomas Jefferson University's [Center for Teaching and Learning \(CTL\)](#). The Commons is a showcase for Jefferson books and journals, peer-reviewed scholarly publications, unique historical collections from the University archives, and teaching tools. The Jefferson Digital Commons allows researchers and interested readers anywhere in the world to learn about and keep up to date with Jefferson scholarship. This article has been accepted for inclusion in Department of Neurosciences Faculty Papers by an authorized administrator of the Jefferson Digital Commons. For more information, please contact: [JeffersonDigitalCommons@jefferson.edu](mailto:JeffersonDigitalCommons@jefferson.edu).

Article

# Antagonistic Regulation of Circadian Output and Synaptic Development by JETLAG and the DYSCHRONIC-SLOWPOKE Complex



Angelique Lamaze, James E.C. Jepson, Oghenerukevw Akpoghiran, Kyunghee Koh

kyunghee.koh@jefferson.edu

**HIGHLIGHTS**

Loss of DYSC differentially impacts morning and evening oscillators

Reduced JET activity rescues the *dysc* and *slo* arrhythmic phenotype

Reduced JET activity causes synaptic defects at the larval NMJ

JET opposes DYSC and SLO function at the NMJ synapse

Lamaze et al., iScience 23, 100845  
 February 21, 2020 © 2020 The Author(s).  
<https://doi.org/10.1016/j.isci.2020.100845>



## Article

# Antagonistic Regulation of Circadian Output and Synaptic Development by JETLAG and the DYSCHRONIC-SLOWPOKE Complex

Angelique Lamaze,<sup>1,2</sup> James E.C. Jepson,<sup>1,3</sup> Oghenerukewe Akpoghiran,<sup>1</sup> and Kyunghye Koh<sup>1,4,\*</sup>

## SUMMARY

Circadian output genes act downstream of the clock to promote rhythmic changes in behavior and physiology, yet their molecular and cellular functions are not well understood. Here we characterize an interaction between regulators of circadian entrainment, output, and synaptic development in *Drosophila* that influences clock-driven anticipatory increases in morning and evening activity. We previously showed the JETLAG (JET) E3 ubiquitin ligase resets the clock upon light exposure, whereas the PDZ protein DYSCHRONIC (DYSC) regulates circadian locomotor output and synaptic development. Surprisingly, we find that JET and DYSC antagonistically regulate synaptic development at the larval neuromuscular junction, and reduced JET activity rescues arrhythmicity of *dysc* mutants. Consistent with our prior finding that DYSC regulates SLOWPOKE (SLO) potassium channel expression, *jet* mutations also rescue circadian and synaptic phenotypes in *slo* mutants. Collectively, our data suggest that JET, DYSC, and SLO promote circadian output in part by regulating synaptic morphology.

## INTRODUCTION

Many aspects of adult behavior and physiology are subject to circadian regulation, including rhythmic alterations in locomotor activity that persist in the absence of changing environmental cues such as light or temperature. Forward genetic screens in the fruit fly, *Drosophila melanogaster*, have been of fundamental importance in elucidating the genetic underpinnings and molecular principles by which circadian clocks function and are entrained by the external environment (Allada and Chung, 2010; Axelrod et al., 2015; Franco et al., 2018; Tataroglu and Emery, 2015; Tategu et al., 2008). At the core of the *Drosophila* clock is a transcription-translation feedback loop, in which CLOCK (CLK) and CYCLE (CYC) activate transcription of their own inhibitors, PERIOD (PER) and TIMELESS (TIM). The molecular clock functions in approximately 150 neurons in the adult *Drosophila* brain (Nitabach and Taghert, 2008; Veleri et al., 2007). In standard 12 h light–12 h dark (LD) and constant 25°C conditions, *Drosophila* exhibit increased locomotor activity before light onset (morning anticipation) and offset (evening anticipation). These behavioral changes are driven by the circadian clock, and distinct groups of clock neurons in the lateral regions of the *Drosophila* brain, termed morning and evening oscillators, control morning and evening anticipation, respectively (Grima et al., 2004; Stoleru et al., 2004). However, whether the outputs of these distinct groups of clock neurons are regulated via the same molecular and circuit mechanisms is unclear.

Light is an important entraining factor for the *Drosophila* clock and synchronizes circadian oscillations via degradation of TIM, thus resetting the negative feedback component of the clock. This process is mediated by a molecular machinery comprised of the blue-light photo-receptor CRYPTOCHROME (CRY) and the F box protein JETLAG (JET), a component of an E3 ubiquitin ligase complex (Emery et al., 1998; Koh et al., 2006; Peschel et al., 2009; Stanewsky et al., 1998). Blue light activates CRY and induces the association of JET with both CRY and TIM, which facilitates proteasome-mediated degradation of TIM. To date, the sole known function for JET is in the light-induced TIM degradation pathway.

Several genes have been identified that, when mutated, result in arrhythmic locomotor patterns despite normal cycling of clock proteins (Dockendorff et al., 2002; Suh and Jackson, 2007; Williams et al., 2001), suggesting that these genes impact rhythmicity by regulating either the output of clock neurons or the function or development of downstream circuit components. We previously characterized an output gene termed *dyschronic* (*dysc*) (Jepson et al., 2012), a *Drosophila* homolog of *whirlin/DFNB31*. Human *DFNB31* encodes a PDZ-domain containing protein linked to Usher syndrome, a form of deaf-blindness (Mburu et al., 2003).

<sup>1</sup>Department of Neuroscience and the Farber Institute for Neurosciences, Thomas Jefferson University, Philadelphia, PA 19107, USA

<sup>2</sup>Present address: Institute for Neuro- and Behavioral Biology, Westfälische Wilhelms University, Münster 48149, Germany

<sup>3</sup>Present address: Department of Clinical and Experimental Epilepsy, UCL Queen Square Institute of Neurology, WC1N 3BG London, UK

<sup>4</sup>Lead Contact

\*Correspondence: [kyunghye.koh@jefferson.edu](mailto:kyunghye.koh@jefferson.edu)  
<https://doi.org/10.1016/j.isci.2020.100845>



*dysc* mutants exhibit arrhythmic locomotor behavior in constant dark (DD) conditions despite the persistence of wild-type oscillations in the molecular clock, and restoring *dysc* expression in clock neurons is not sufficient to rescue arrhythmicity (Jepson et al., 2012). This suggests DYSC functions in circuit components downstream of clock neurons for rhythmic behavior, although it may also function in clock neurons. DYSC binds to and regulates the expression of the calcium-activated voltage-gated potassium channel SLOWPOKE (SLO), the *Drosophila* ortholog of the mammalian Slo1 BK potassium channel (Jepson et al., 2012). As with *dysc* mutants, loss-of-function mutations in *slo* result in arrhythmicity (Fernandez et al., 2007). Furthermore, using the *Drosophila* larval neuromuscular junction (NMJ) as a model system, we demonstrated a role for DYSC in synaptic development (Jepson et al., 2014). We found that loss of DYSC results in alterations in synaptic morphology including increased bouton size and decreased bouton number (Jepson et al., 2014). Consistent with the regulation of SLO expression by DYSC, *slo* mutants exhibit NMJ phenotypes that overlap with those observed in *dysc* mutants. Together, these results demonstrate roles for DYSC and SLO in the regulation of circadian output and synaptic development.

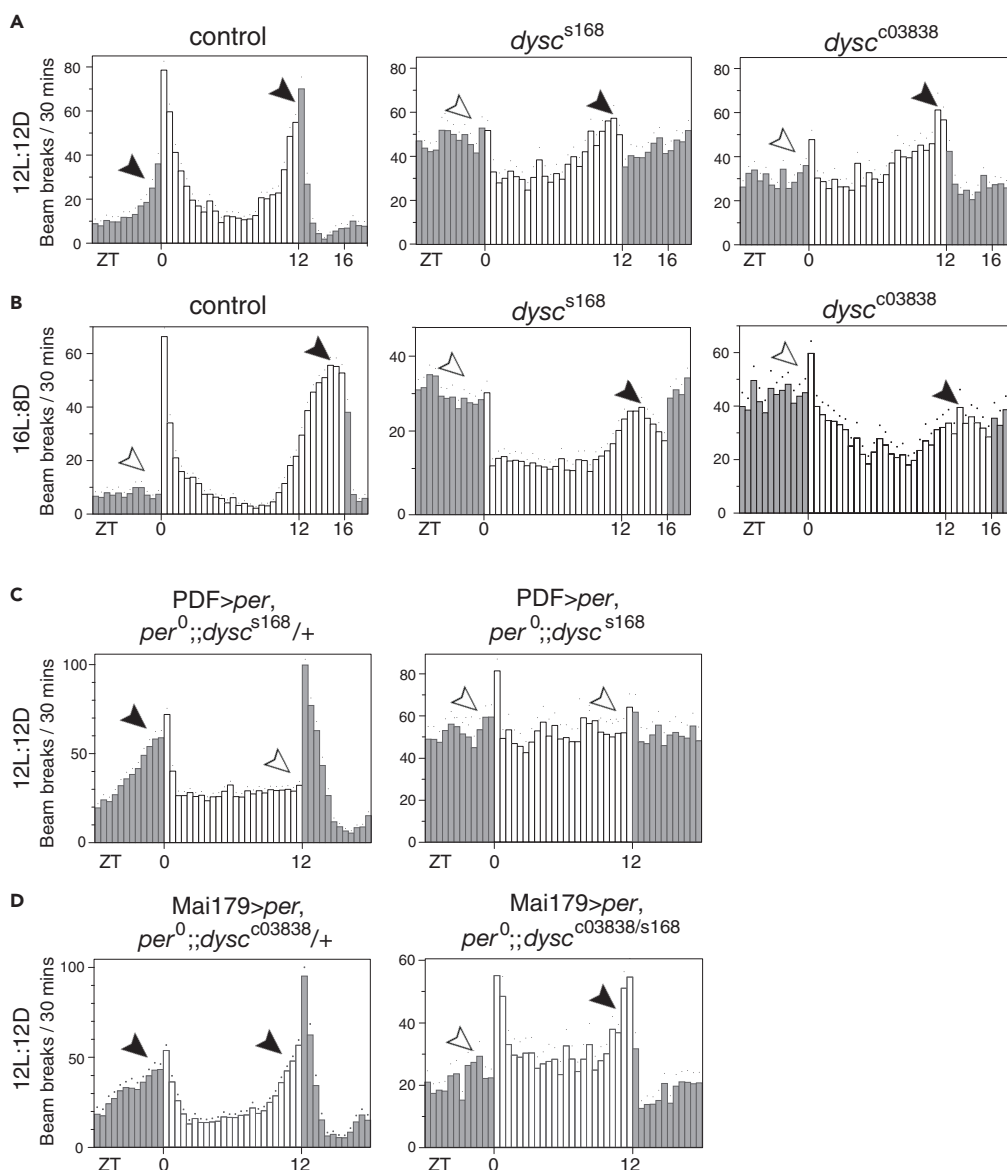
Here we show that the morning and evening oscillators exhibit distinct functional requirements for DYSC under varying light conditions and demonstrate an unexpected interaction between JET, DYSC, and SLO in regulating both circadian rhythms and synaptic development. Mutations in *jet*, but not *cry*, significantly rescue the arrhythmic phenotype of both *dysc* and *slo* mutants in DD, suggesting a role for JET in the circadian output pathway. Intriguingly, defects in *dysc* and *slo* mutant synapses are also suppressed by *jet* mutations, and reducing JET levels enhances synaptic growth at the NMJ. We find that DYSC, SLO, and JET act as regulators of synaptic morphology, suggesting a common cellular locus for their activity. Collectively, these data suggest that JET, DYSC, and SLO influence circadian output in part by regulating synaptic morphology.

## RESULTS

### Loss of DYSC Differentially Impacts Morning and Evening Oscillators

Distinct clusters of clock neurons control rhythmic behavior under different environmental conditions (Grima et al., 2004; Stoleru et al., 2004, 2007; Zhang et al., 2010). We previously reported that *dysc* mutants are arrhythmic under DD conditions (Jepson et al., 2012). This indicates that DYSC is required for proper output of small lateral ventral neurons (s-LN<sub>v</sub>s) expressing the neuropeptide PDF, which controls rhythmicity in DD (Renn et al., 1999). PDF-positive s-LN<sub>v</sub>s are referred to as the morning oscillator due to their role in anticipatory increase in locomotor activity before light onset (Grima et al., 2004). To examine the role of DYSC in additional clock neuron clusters, we assayed *dysc* mutants under different light conditions. As expected, *dysc* mutants did not exhibit morning anticipation in standard 12 h:12 h LD conditions (Figures 1A and S1A), confirming defective output of the morning oscillator. However, *dysc* mutants showed robust evening anticipation (Figures 1A and S1A), suggesting DYSC is not essential for the output of the CRY+, PDF-negative fifth s-LN<sub>v</sub>, and dorsal lateral neurons (LN<sub>d</sub>s), referred to as the evening oscillator (Grima et al., 2004). To confirm that DYSC is not required for the output of the evening oscillator, we examined locomotor behavior under prolonged photoperiod conditions (16 h: 8 h LD). The evening peak of activity occurs at or near the light offset under 12 h:12 h LD, but a few hours before the light offset under 16 h:8 h LD (Majercak et al., 1999; Schlichting et al., 2016; Yoshii et al., 2009). We observed clear evening peaks of activity in both wild-type controls and *dysc* mutants a few hours before the light offset under 16 h:8 h LD (Figure 1B). Relative to 12 h:12 h LD, evening peaks were delayed by 2–3 hr in 16 h:8 h LD in both control and *dysc* mutants. These results suggest an essential role of DYSC for the behavioral output of the morning but not the evening oscillator in alternating light-dark conditions.

To further examine the differential role of DYSC in the output of morning and evening oscillators, we analyzed the effects of restoring *per* expression in distinct groups of clock neurons of *per*<sup>0</sup> mutants harboring wild-type or mutant alleles of *dysc*. Previous studies have shown that expressing *per* only in the morning oscillator is sufficient to restore morning anticipation in LD, whereas expressing *per* only in the evening oscillator is sufficient to restore evening anticipation in LD (Grima et al., 2004; Stoleru et al., 2004). We therefore compared the effects of restoring *per* expression in different groups of clock cells in *per*<sup>0</sup>, *dysc*<sup>s168</sup> double mutant flies, vs *per*<sup>0</sup>, *dysc*<sup>s168/+</sup> flies. We previously showed that *dysc* heterozygotes behave indistinguishably from wild-type control flies (Jepson et al., 2012), and as expected, restoring *per* in LN<sub>v</sub>s using PDF-Gal4 was sufficient to rescue morning anticipation in *per*<sup>0</sup>, *dysc*<sup>s168/+</sup> flies (Figures 1C and S1B). In contrast, it was not sufficient to rescue morning anticipation in *per*<sup>0</sup>, *dysc*<sup>s168</sup> double mutants,



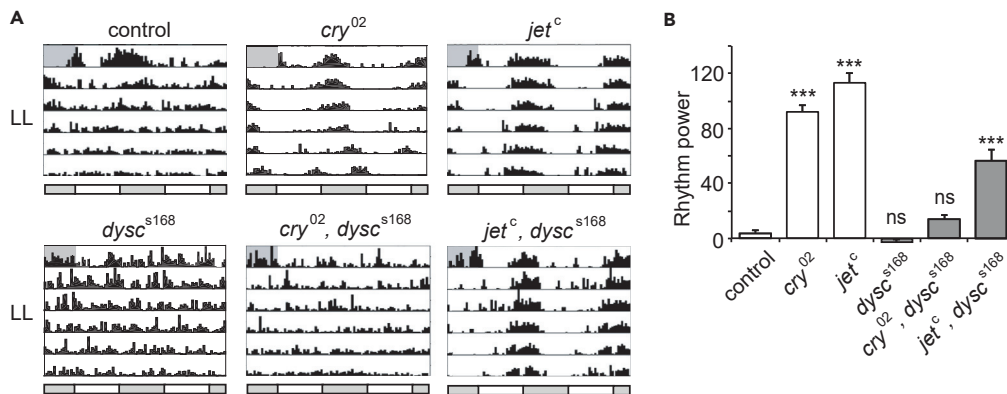
**Figure 1. Loss of DYSC Differentially Impacts Morning and Evening Oscillators**

(A) Activity profiles of control and *dysc*<sup>s168</sup> or *dysc*<sup>c03838</sup> homozygous adult males in 12 h:12 h LD conditions. Bars represent average beam breaks per 30 min. Dots represent SEM. Gray bars represent dark periods, and white bars represent light periods. In this and subsequent figures, filled and open arrowheads represent the presence and absence of anticipation, respectively. N = 38–54.

(B) Activity profiles of males of indicated genotypes under extended photoperiod (16 h:8 h LD) conditions. N = 28–53.

(C and D) Activity profiles of *per*<sup>0</sup> flies in which *per* is restored in the morning oscillator using PDF-Gal4 (C) or in both morning and evening oscillators using Mai179-Gal4 (D). The heterozygous *dysc* background (left) is used as a control for the *dysc* homozygous or transheterozygous (right) background. N = 24–66. Quantification of morning and evening anticipation is presented in Figure S1.

providing additional evidence that *dysc* is necessary for the output of the morning oscillator. Next, we used the Mai179-Gal4 driver to restore *per* expression in both the morning and evening oscillators (Grima et al., 2004). Although this was sufficient to rescue morning and evening anticipation in a *dysc* heterozygous background, only evening anticipation was rescued in a *dysc*<sup>s168/c03838</sup> transheterozygous background (Figures 1C and S1C). These results confirm that *dysc* is required for the output of the morning oscillator but not the evening oscillator in LD.



**Figure 2. Reduced JET Rescues Arrhythmicity of *dysc* Mutants in LL**

(A) Representative actograms of males of indicated genotypes in LL.

(B) Mean rhythm strength (power) of males of indicated genotypes in LL. Although *dysc* single mutants are arrhythmic in LL, *jet*, *dysc* double mutants exhibit moderate rhythm strength. N = 28–66. Bars represent mean  $\pm$  SEM. \*\*\*p < 0.0005, one-way Brown-Forsythe and Welch ANOVA for unequal variances followed by Dunnett T3 test relative to controls.

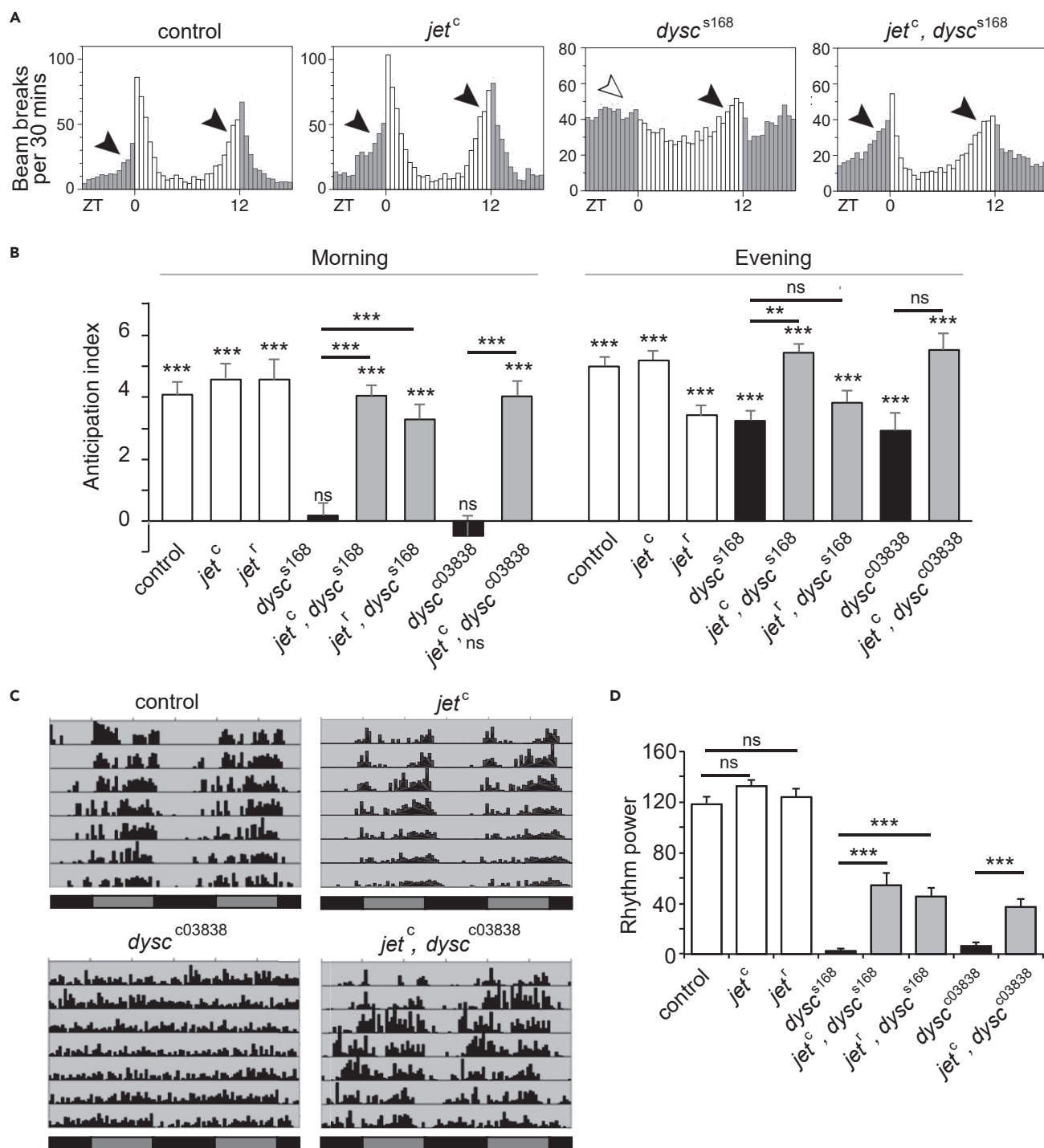
### Mutations in *jet*, but Not *cry*, Rescue the *dysc* Arrhythmic Phenotype

Although *dysc* mutants exhibit clear evening anticipation, the pattern of anticipation is different from that of control flies. Although control flies rapidly increase their activity before the light offset over a few hours, *dysc* mutants gradually increase their activity over several hours (Figure 1A). To further examine the evening oscillator output in *dysc* mutants, we assayed locomotor rhythmicity in LL in a *cry* mutant background, which allows the evening oscillator to drive rhythmic behavior (Koh et al., 2006; Picot et al., 2007; Stanewsky et al., 1998). Double mutants for *dysc* and *cry* were arrhythmic in LL conditions (Figures 2A and 2B), suggesting that the evening oscillator is dependent on DYSC under constant light conditions. Together, our data show that although the evening oscillator in *dysc* mutants is capable of driving a gradual evening anticipation in LD conditions, it is unable to support rhythmic behavior in LL. The loss of DYSC may have a relatively minor impact on behavior in LD conditions where the clock is reset on a daily basis but a stronger impact on rhythmic behavior over several days in constant conditions.

Because CRY and JET act in the same pathway to regulate light-dependent TIM degradation and both *cry* and *jet* mutants are rhythmic in LL (Koh et al., 2006; Picot et al., 2007; Stanewsky et al., 1998), we expected *jet*, *dysc* double mutants to phenocopy *cry*, *dysc* double mutants in LL. Unexpectedly, however, we found that a hypomorphic mutation in *jet* (*jet*<sup>c</sup>) robustly restored rhythmicity to *dysc* mutants in LL (Figures 2C and 2D). To our further surprise, introduction of *jet*<sup>c</sup> fully rescued morning anticipation in *dysc* mutants under LD conditions (Figures 3A and 3B). We observed morning anticipation in *jet*, *dysc* double mutants using two independent alleles of *jet* (*jet*<sup>c</sup> and *jet*<sup>t</sup>) and *dysc* (*dysc*<sup>s168</sup> and *dysc*<sup>c03838</sup>) (Jepson et al., 2012; Koh et al., 2006). These results suggest that reduced JET activity restores output of both the morning and evening oscillator in *dysc* mutants. To further analyze morning oscillator output in *jet*, *dysc* double mutants, we next examined rhythmicity in DD. As in LL, we found a substantial rescue of locomotor rhythmicity in *jet*, *dysc* double mutants (Figures 3C and 3D). Together, these data demonstrate that reductions in JET activity at least partially rescue all known circadian phenotypes of the *dysc* mutant and reveal a function for JET in regulating circadian output that is independent of its canonical role in light entrainment.

### Reduced JET Activity Rescues Circadian Phenotypes of *slo* Mutants

We previously showed that in *dysc* mutants, the protein levels of the SLO BK potassium channel are markedly reduced, although not completely eliminated. The *slo* transcript levels are not affected (Jepson et al., 2012), suggesting DYSC post-transcriptionally regulates the expression of the SLO channel. Mutations in *slo* also lead to arrhythmic locomotor behavior (Fernandez et al., 2007), suggesting that DYSC influences circadian output through its regulation of SLO. Because JET acts in the protein degradation pathway, a simple hypothesis is that reductions in JET activity protect SLO channels from proteasomal degradation following loss of DYSC, thus maintaining rhythmic behavior. This hypothesis yields a clear prediction that mutations in *jet* should be unable to rescue the arrhythmic phenotype of *slo* null mutants. We thus examined circadian function in *jet*, *slo* double mutants using flies harboring a P element insertion in the



**Figure 3. Reduced JET Function Restores Morning Anticipation in LD and Rhythmicity in DD of *dysc* Mutants**

(A) Activity profiles of control males, as well as *jet<sup>c</sup>* single, *dysc<sup>s168</sup>* single, and *jet<sup>c</sup>, dysc<sup>s168</sup>* double mutants under 12 h:12 h LD conditions. Morning anticipation, absent in *dysc* single mutants, is present in *jet, dysc* double mutants.

(B) Morning and evening anticipation index for indicated genotypes. Anticipation index is defined as the slope of the best-fitting regression line for the activity counts over a period of 6 h prior to a light-dark transition. N = 23–59. Bars represent anticipation index ± standard error. Statistics above the lines indicate whether the two genotypes are different from each other, whereas those above the bars indicate whether anticipation index of each genotype is significantly different from 0.

**Figure 3. Continued**

(C) Representative actograms of control males as well as *jet<sup>c</sup>* single, *dysc<sup>c03838</sup>* single, and *jet<sup>c</sup>, dysc<sup>c03838</sup>* double mutants under constant dark (DD). Black bars indicate subjective night, and dark gray bars indicate subjective day.

(D) Mean power of rhythmicity of control adult males of indicated genotypes. N = 32–72. Bars represent mean  $\pm$  SEM. \*\*p < 0.005\*\*\*p < 0.0005, ns: not significant, two-way ANOVA (genotype and morning vs evening as the two main factors) followed by Tukey's post-hoc tests for pairwise comparisons; t test with Bonferroni correction for comparing each anticipation index to 0 (B); one-way Brown-Forsythe and Welch ANOVA for unequal variances followed by Dunnett T3 test for the indicated pairwise comparisons (D).

second exon of the *slo* locus that acts as a null allele (*slo<sup>11481</sup>*) (Jepson et al., 2014). As with *dysc* mutants, *slo<sup>11481</sup>* homozygotes were arrhythmic in DD (Figures 4A and 4B) and showed significant evening anticipation but no morning anticipation in LD (Figures 4C and S2). Intriguingly, in both DD and LD conditions, morning oscillator output was restored in *jet<sup>c</sup>, slo<sup>11481</sup>* double mutants (Figures 4 and S2). Another simple hypothesis that DYSC itself is a substrate of JET is also unlikely because *jet* mutations rescue the circadian phenotypes of *dysc<sup>c03838</sup>* null mutants. In addition, *dysc<sup>s168</sup>* mutants express only a short isoform of *dysc* that does not play a role in circadian rhythms and lack the isoforms that support rhythmic behavior (Jepson et al., 2012). Together, our data indicate that SLO and DYSC are not substrates of JET and demonstrate a role for JET that intersects with both DYSC and SLO to modulate circadian output.

**Reduced JET Activity Rescues Synaptic Defects in *dysc* and *slo* Mutants**

In the adult *Drosophila* brain, DYSC localizes to both neuronal tracts as well as the synaptic neuropil (Jepson et al., 2012), and at the larval neuromuscular junction (NMJ), DYSC exhibits a punctate presynaptic expression pattern in synaptic boutons and localizes closely to active zones, the sites of neurotransmitter release (Jepson et al., 2014; Wagh et al., 2006). We previously demonstrated that DYSC plays an important role in modulating a range of synaptic parameters, with loss of DYSC resulting in a reduction in the number of synaptic boutons coupled with an increase in bouton size (Jepson et al., 2014). Thus, we were interested to determine whether reduced JET function could modify the synaptic effects of loss of DYSC.

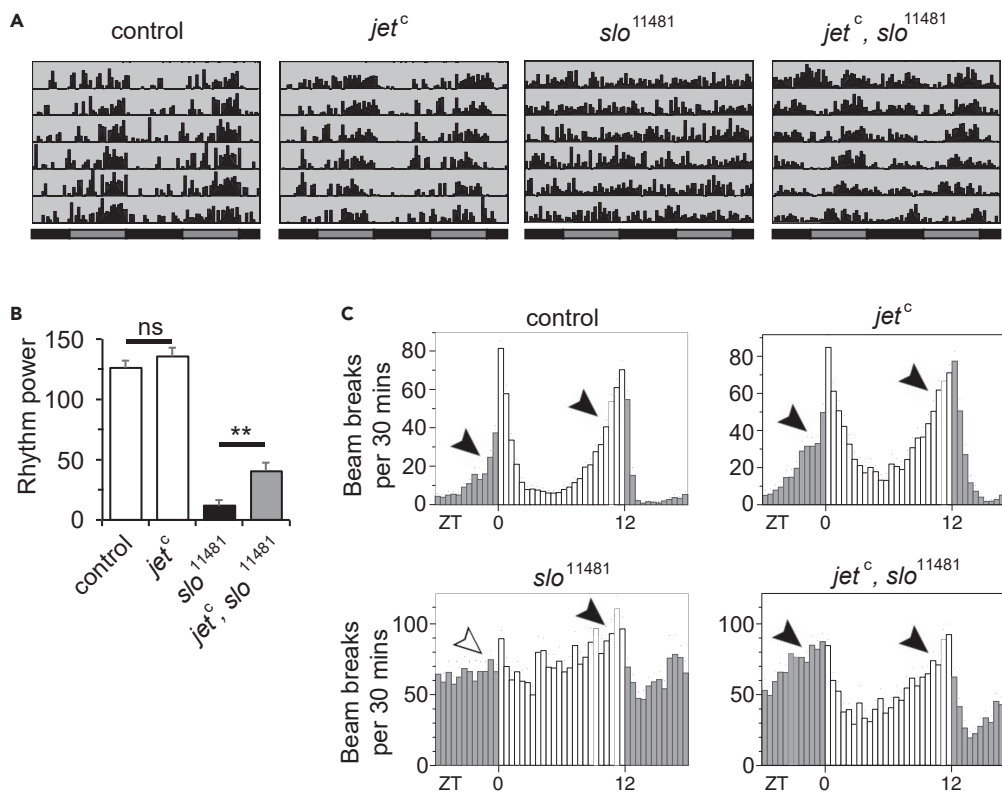
To do so, we examined synaptic morphology at the third instar NMJ in wild-type larvae compared with *jet* and *dysc* single mutant larvae and *jet, dysc* double mutants. Consistent with our previous data, loss of DYSC resulted in a significant reduction in synaptic bouton number and enlarged boutons (Figure 5). Interestingly, reduced JET activity resulted in a marked increase in bouton number, revealing a previously uncharacterized role for JET in synaptic development (Figures 5A and 5B). As expected from the opposite effects on bouton number, reduced JET compensated for the loss of DYSC, and *jet, dysc* double mutants had an essentially wild-type number of boutons (Figures 5A and 5B). Intriguingly, despite the fact that reduced JET activity resulted in a slight but significant increase in bouton size, it nonetheless partially rescued the much greater increase in bouton size of *dysc* mutants (Figures 5A and 5C), demonstrating an interaction between the two genes for the regulation of bouton size. As expected from the similarities between *dysc* and *slo* bouton size phenotypes, reduction of JET activity also rescued the large bouton size phenotype of *slo* mutants (Figures 5A and 5C). As previously shown, unlike *dysc* mutants, *slo* mutants show a wild-type number of boutons. Interestingly, loss of SLO can rescue the increased bouton number phenotype of *jet* mutants (Figures 5A and 5B), further demonstrating opposing roles of *slo* and *jet* for synapse development. Thus, JET acts in opposition to DYSC and SLO in a common pathway regulating synaptic morphology.

Our discovery that DYSC has a role in larval synaptic development raises the possibility that arrhythmic behavior of adult *dysc* mutants may stem from developmental defects in the formation of circadian circuits. To determine whether DYSC functions during development or adulthood for rhythmic behavior, we used GeneSwitch, an RU486-inducible Gal4-derived protein that allows temporal control of transgenic expression. Adult-specific expression of a *dysc* transgene using the pan-neuronal *elav*-GeneSwitch (*elav*-GS) driver restored rhythmicity to *dysc* mutants but did so in a partial manner (Figure S3; compare with Figure 3D). Together, our results suggest that DYSC acts acutely at the adult stage to drive rhythmic behavior but may also have a role in the development of neural circuits downstream of the clock cell network.

**DISCUSSION**

The present investigation began with the interesting observation that although *dysc* mutants are arrhythmic in DD and lack morning anticipation in LD, they show robust evening anticipation in LD. This led us to hypothesize that DYSC is required for the proper output of the morning oscillator but not of the evening oscillator. Consistent with this hypothesis, restoring *per* expression in the evening oscillator is sufficient to produce evening





**Figure 4. Reduced JET Function Restores Morning Anticipation in LD and Rhythmicity in DD of *slo* Mutants**

(A) Representative actograms of control,  $jet^c$ ,  $slo^{11481}$  and  $jet, slo^{11481}$  males in DD.

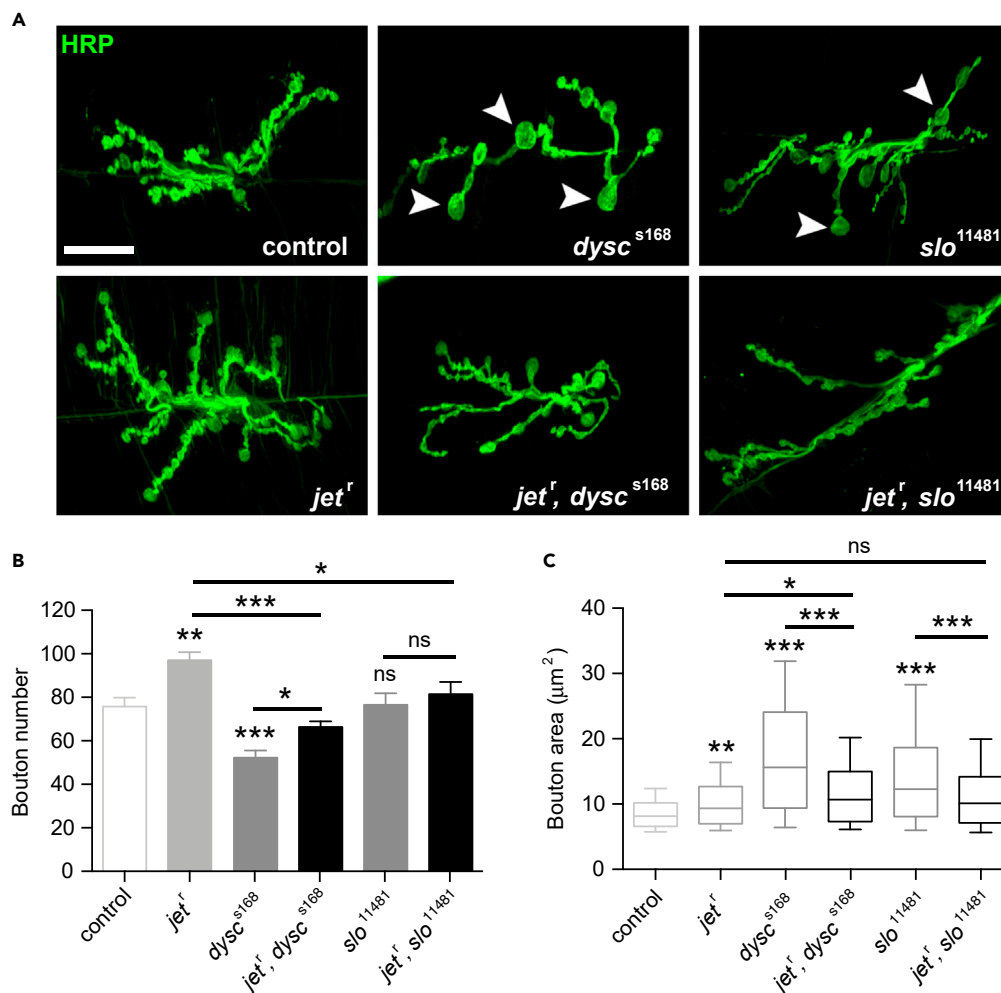
(B) Mean power of rhythmicity of control,  $jet^c$ ,  $slo^{11481}$  and  $jet^c, slo^{11481}$  males in DD. N = 26–48. Bars represent mean ± SEM. \*\*p < 0.005, ns: not significant, one-way Brown-Forsythe and Welch ANOVA for unequal variances followed by Dunnett T3 test for all pairwise comparisons, only one of which is shown for clarity.

(C) Activity profiles of control males, as well as  $slo^{11481}$  single and  $jet^c, slo^{11481}$  double mutants under 12 h:12 h LD conditions. N = 35–43. Quantification of morning and evening anticipation is presented in Figure S2.

anticipation in *per*, *dysc* double mutants, but restoring *per* expression in the morning oscillator is not sufficient for morning anticipation. These results demonstrate that the two oscillators have distinct molecular requirements for robust output. The differential requirements could be due to recruitment of distinct downstream circuit elements or a differential impact on the connectivity between the oscillators and common downstream circuit elements. A recent work has demonstrated that the morning and evening oscillators recruit a common set of dopaminergic relay neurons and premotor centers in the ellipsoid body of the central complex to produce morning and evening peaks of activity (Liang et al., 2019). Although several circuit components downstream of the morning oscillator have been identified (Cavanaugh et al., 2014; Luo and Sehgal, 2012), it is not clear whether they are also downstream of the evening oscillator and how they connect to the dopaminergic relay neurons. It will therefore be interesting to determine the circuit mechanisms underlying the differential impact of the loss of DYSC on the morning and evening oscillators.

Interestingly, although DYSC is dispensable for robust evening anticipation in LD, it is required for rhythmic behavior in constant light conditions, suggesting that the requirement for DYSC changes depending on the lighting condition. Although *dysc* mutants exhibit robust evening anticipation, the pattern of anticipation is different from that of control flies (i.e., gradual vs. rapid increase in activity before lights off). This finding suggests that even under LD conditions, DYSC plays a role in behavioral output of the evening oscillator, albeit a non-essential one. In constant light conditions, the loss of DYSC, in combination with the absence of daily resetting of the clock, may result in more pronounced circadian defects.

Examination of *dysc* mutants in *cry* or *jet* mutant background revealed previously unknown roles of JET in circadian output and synaptic development, distinct from its known role for light entrainment of the clock.



### Figure 5. Mutations in *jet* Rescue Synaptic Defects in *dysc* and *slo* Homozygous Larvae

(A) Representative confocal z-stacks showing HRP-labeled synapses from muscle 6/7, segment 3, of the NMJ of the third instar larvae. Note the enlarged boutons in *dysc<sup>s168</sup>* and *slo<sup>11481</sup>* mutant synapses (arrowheads), which are no longer present in *jet<sup>r</sup>*, *dysc<sup>s168</sup>* and *jet<sup>r</sup>, slo<sup>11481</sup>* double mutant synapses. Scale bar, 20  $\mu\text{m}$ .

(B) Average number of synaptic boutons in control, *jet<sup>r</sup>*, *dysc<sup>s168</sup>*, *slo<sup>11481</sup>* single and double mutant synapses. Bars represent mean  $\pm$  SEM. N = 16–30.

(C) Box plot illustrating distribution of synaptic bouton areas in the indicated genotypes. Whiskers/lines represent 10<sup>th</sup>, 25<sup>th</sup>, median, 75<sup>th</sup>, and 90<sup>th</sup> percentiles of the population distribution. N = 188–391. \* $p < 0.05$ , \*\* $p < 0.005$ , \*\*\* $p < 0.0005$ , ns: not significant, one-way Brown-Forsythe and Welch ANOVA for unequal variances followed by Sidak post-hoc test (B), and Kruskal-Wallis test followed Dunn post-hoc test (C). For both (B) and (C), 7 indicated pairwise post-hoc tests were performed to compare controls against single mutants and double mutants against single mutants.

The fact that reduced JET, but not reduced CRY, can support rhythmic behavior of *dysc* mutants in LL and that reduced JET also rescues *dysc* arrhythmicity in DD suggests that JET plays a role in maintaining rhythmic behavior in constant conditions. Furthermore, *jet* mutants exhibit an increase in synaptic bouton number at the NMJ, providing direct evidence of a role for JET in synaptic development.

DYSC and SLO bind to each other and regulate each other's expression, and *dysc* and *slo* mutants have similar circadian and synaptic phenotypes (Jepson et al., 2012, 2014). Thus, it is not surprising that *jet* mutations can also rescue *slo* mutant phenotypes. Not only can *jet* mutations rescue *dysc* and *slo* circadian and enlarged bouton phenotypes, *dysc* and *slo* mutations can also rescue the increased bouton number phenotype of *jet* mutants. This highlights the antagonistic nature of the interaction between JET and the DYSC-SLO complex.

Our finding that *jet* mutations can rescue null mutations of *dysc* and *slo* indicate that DYSC and SLO are not substrates of JET. Thus, an important future goal would be to identify the substrates of JET relevant for circadian output and synaptic development. This in turn may help us to understand how JET, DYSC, and SLO interact and whether the same substrates mediate their roles in circadian output and synaptic development.

The fact that all three molecules function in both circadian rhythms and synaptic development suggest that the two processes are closely linked. Clock neurons as well as downstream circuit components in *dysc* and *slo* mutants may have synaptic defects analogous to those observed at the NMJ, which may mediate their circadian phenotypes. Similarly, compensatory synaptic alterations in clock and downstream neurons caused by *jet* mutations may underlie their ability to restore rhythmicity in *dysc* and *slo* mutants. It would be fruitful to investigate whether the antagonistic functions of JET vs DYSC and SLO during larval synaptic development have counterparts in the adult brain, especially in clock and circadian output neurons. Previous research found that the dorsal projections of the adult sLNv neurons in *slo* mutants exhibit altered arborization patterns (Fernandez et al., 2007), which provides partial support for the hypothesis that synaptic defects in adult neurons underlie circadian phenotypes. Because *slo* and *dysc* share several, but not all, synaptic phenotypes at the larval NMJ (Jepson et al., 2014), analysis of multiple aspects of synaptic morphology, e.g. the arborization pattern and synaptic puncta size, in adult clock neurons as well as downstream neurons may be required to discover adult synaptic phenotypes relevant to circadian behavior.

In summary, our research reveals previously unknown roles of JET in opposition to DYSC and SLO for circadian behavior and synaptic development. The functions of the closest mammalian homolog of JET, F box and LRR protein 15 (FBXL15), in circadian rhythms and synaptic development are unknown. It will therefore be intriguing to examine whether FBXL15 and the mammalian homologs of DYSC and SLO, Whirlin and Slo1, respectively, similarly function in an antagonistic manner to regulate circadian rhythms and synaptic development.

### Limitations of the Study

The present research has examined the synaptic phenotypes of the *dysc*, *slo*, and *jet* mutants at the larval NMJ. Whether the roles these genes play in synaptic morphology are relevant for adult circadian behavior remains unclear. We performed an analysis of the dorsal projections of the adult sLNvs in *dysc* mutants, but the results were inconclusive. Detailed analysis of synapses of clock neurons and downstream circuits would be required to determine whether there is a direct link between synaptic and circadian functions of the DYSC/SLO complex and JET.

### METHODS

All methods can be found in the accompanying [Transparent Methods supplemental file](#).

### DATA AND CODE AVAILABILITY

Data will be made available upon request.

### SUPPLEMENTAL INFORMATION

Supplemental Information can be found online at <https://doi.org/10.1016/j.isci.2020.100845>.

### ACKNOWLEDGMENTS

We thank Drs. Charlotte Helfrich-Förster, Haig Kesheshian, Francois Rouyer, and Amita Seghal, Harvard Medical School Stock Center, and the Bloomington Stock Center for fly stocks, and M. Boudinot and Dr. Francois Rouyer for the FaasX software. This work was supported by grants from the National Institutes of Health (R01GM088221 and R01NS086887 to K.K.).

### AUTHOR CONTRIBUTIONS

Conceptualization and Methodology: A.L., J.E.C.J., and K.K. Investigation: A.L., J.E.C.J., and O.A. Writing—Original Draft: A.L., J.E.C.J., and K.K. Writing—Review & Editing: O.A. Funding Acquisition and Supervision: K.K.

## DECLARATION OF INTERESTS

The authors declare no competing interests.

Received: September 19, 2019

Revised: December 12, 2019

Accepted: January 10, 2020

Published: February 21, 2020

## REFERENCES

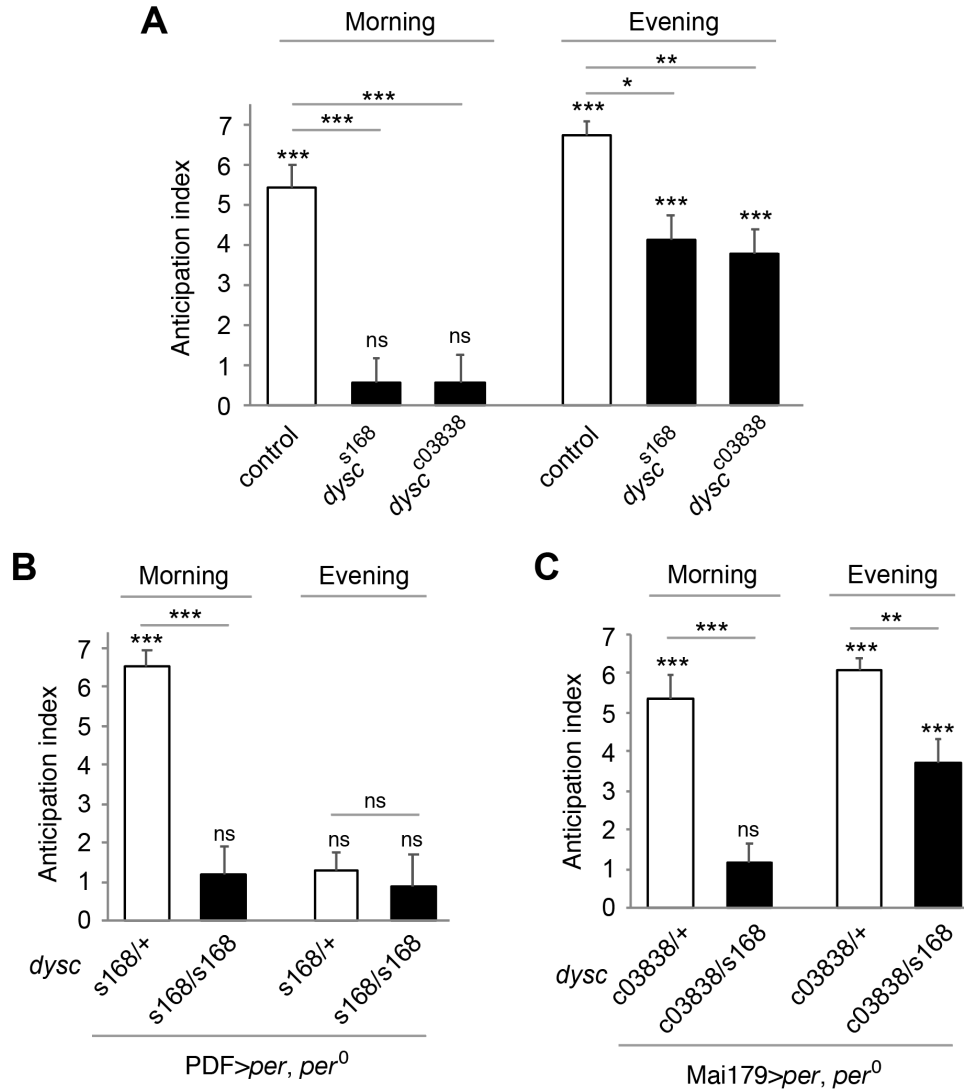
- Allada, R., and Chung, B.Y. (2010). Circadian organization of behavior and physiology in *Drosophila*. *Annu. Rev. Physiol.* 72, 605–624.
- Axelrod, S., Saez, L., and Young, M.W. (2015). Studying circadian rhythm and sleep using genetic screens in *Drosophila*. *Methods Enzymol.* 551, 3–27.
- Cavanaugh, D.J., Geratowski, J.D., Wooltorton, J.R., Spaethling, J.M., Hector, C.E., Zheng, X., Johnson, E.C., Eberwine, J.H., and Sehgal, A. (2014). Identification of a circadian output circuit for rest:activity rhythms in *Drosophila*. *Cell* 157, 689–701.
- Dockendorff, T.C., Su, H.S., McBride, S.M., Yang, Z., Choi, C.H., Siwicki, K.K., Sehgal, A., and Jongens, T.A. (2002). *Drosophila* lacking *dfmr1* activity show defects in circadian output and fail to maintain courtship interest. *Neuron* 34, 973–984.
- Emery, P., So, W.V., Kaneko, M., Hall, J.C., and Rosbash, M. (1998). CRY, a *Drosophila* clock and light-regulated cryptochrome, is a major contributor to circadian rhythm resetting and photosensitivity. *Cell* 95, 669–679.
- Fernandez, M.P., Chu, J., Vilella, A., Atkinson, N., Kay, S.A., and Ceriani, M.F. (2007). Impaired clock output by altered connectivity in the circadian network. *Proc. Natl. Acad. Sci. U S A* 104, 5650–5655.
- Franco, D.L., Frenkel, L., and Ceriani, M.F. (2018). The underlying genetics of *Drosophila* circadian behaviors. *Physiology (Bethesda)* 33, 50–62.
- Grima, B., Chelot, E., Xia, R., and Rouyer, F. (2004). Morning and evening peaks of activity rely on different clock neurons of the *Drosophila* brain. *Nature* 431, 869–873.
- Jepson, J.E., Shahidullah, M., Lamaze, A., Peterson, D., Pan, H., and Koh, K. (2012). *dyschronic*, a *Drosophila* homolog of a deaf-blindness gene, regulates circadian output and Slowpoke channels. *PLoS Genet.* 8, e1002671.
- Jepson, J.E., Shahidullah, M., Liu, D., le Marchand, S.J., Liu, S., Wu, M.N., Levitan, I.B., Dalva, M.B., and Koh, K. (2014). Regulation of synaptic development and function by the *Drosophila* PDZ protein *Dyschronic*. *Development* 141, 4548–4557.
- Koh, K., Zheng, X., and Sehgal, A. (2006). JETLAG resets the *Drosophila* circadian clock by promoting light-induced degradation of TIMELESS. *Science* 312, 1809–1812.
- Liang, X., Ho, M.C.W., Zhang, Y., Li, Y., Wu, M.N., Holy, T.E., and Taghert, P.H. (2019). Morning and evening circadian pacemakers independently drive premotor centers via a specific dopamine relay. *Neuron* 102, 843–857.e4.
- Luo, W., and Sehgal, A. (2012). Regulation of circadian behavioral output via a MicroRNA-JAK/STAT circuit. *Cell* 148, 765–779.
- Majercak, J., Sidote, D., Hardin, P.E., and Edery, I. (1999). How a circadian clock adapts to seasonal decreases in temperature and day length, [see comments]. *Neuron* 24, 219–230.
- Mburu, P., Mustapha, M., Varela, A., Weil, D., El-Amraoui, A., Holme, R.H., Rump, A., Hardisty, R.E., Blanchard, S., Coimbra, R.S., et al. (2003). Defects in whirlin, a PDZ domain molecule involved in stereocilia elongation, cause deafness in the whirler mouse and families with DFNB31. *Nat. Genet.* 34, 421–428.
- Nitabach, M.N., and Taghert, P.H. (2008). Organization of the *Drosophila* circadian control circuit. *Curr. Biol.* 18, R84–R93.
- Peschel, N., Chen, K.F., Szabo, G., and Stanewsky, R. (2009). Light-dependent interactions between the *Drosophila* circadian clock factors cryptochrome, jetlag, and timeless. *Curr. Biol.* 19, 241–247.
- Picot, M., Cusumano, P., Klarsfeld, A., Ueda, R., and Rouyer, F. (2007). Light activates output from evening neurons and inhibits output from morning neurons in the *Drosophila* circadian clock. *PLoS Biol.* 5, e315.
- Renn, S.C., Park, J.H., Rosbash, M., Hall, J.C., and Taghert, P.H. (1999). A pdf neuropeptide gene mutation and ablation of PDF neurons each cause severe abnormalities of behavioral circadian rhythms in *Drosophila*. *Cell* 99, 791–802.
- Schlichting, M., Menegazzi, P., Lelito, K.R., Yao, Z., Buhl, E., Dalla Benetta, E., Bahle, A., Denike, J., Hodge, J.J., Helfrich-Forster, C., and Shafer, O.T. (2016). A neural network underlying circadian entrainment and photoperiodic adjustment of sleep and activity in *Drosophila*. *J. Neurosci.* 36, 9084–9096.
- Stanewsky, R., Kaneko, M., Emery, P., Beretta, B., Wager-Smith, K., Kay, S.A., Rosbash, M., and Hall, J.C. (1998). The *cryb* mutation identifies cryptochrome as a circadian photoreceptor in *Drosophila*. *Cell* 95, 681–692.
- Stoleru, D., Peng, Y., Agosto, J., and Rosbash, M. (2004). Coupled oscillators control morning and evening locomotor behaviour of *Drosophila*. *Nature* 431, 862–868.
- Stoleru, D., Nawathean, P., Fernandez Mde, L., Menet, J.S., Ceriani, M.F., and Rosbash, M. (2007). The *Drosophila* circadian network is a seasonal timer. *Cell* 129, 207–219.
- Suh, J., and Jackson, F.R. (2007). *Drosophila* ebony activity is required in glia for the circadian regulation of locomotor activity. *Neuron* 55, 435–447.
- Tataroglu, O., and Emery, P. (2015). The molecular ticks of the *Drosophila* circadian clock. *Curr. Opin. Insect Sci.* 7, 51–57.
- Tategu, M., Nakagawa, H., Hayashi, R., and Yoshida, K. (2008). Transcriptional co-factor CDCA4 participates in the regulation of JUN oncogene expression. *Biochimie* 90, 1515–1522.
- Veleri, S., Rieger, D., Helfrich-Forster, C., and Stanewsky, R. (2007). Hofbauer-Buchner eyelet affects circadian photosensitivity and coordinates TIM and PER expression in *Drosophila* clock neurons. *J. Biol. Rhythms* 22, 29–42.
- Wagh, D.A., Rasse, T.M., Asan, E., Hofbauer, A., Schwenkert, I., Durrbeck, H., Buchner, S., Dabauvalle, M.C., Schmidt, M., Qin, G., et al. (2006). Bruchpilot, a protein with homology to ELKS/CAST, is required for structural integrity and function of synaptic active zones in *Drosophila*. *Neuron* 49, 833–844.
- Williams, J.A., Su, H.S., Bernards, A., Field, J., and Sehgal, A. (2001). A circadian output in *Drosophila* mediated by neurofibromatosis-1 and Ras/MAPK. *Science* 293, 2251–2256.
- Yoshii, T., Wulbeck, C., Sehadvova, H., Veleri, S., Bichler, D., Stanewsky, R., and Helfrich-Forster, C. (2009). The neuropeptide pigment-dispersing factor adjusts period and phase of *Drosophila*'s clock. *J. Neurosci.* 29, 2597–2610.
- Zhang, Y., Liu, Y., Bilodeau-Wentworth, D., Hardin, P.E., and Emery, P. (2010). Light and temperature control the contribution of specific DN1 neurons to *Drosophila* circadian behavior. *Curr. Biol.* 20, 600–605.

iScience, Volume 23

## **Supplemental Information**

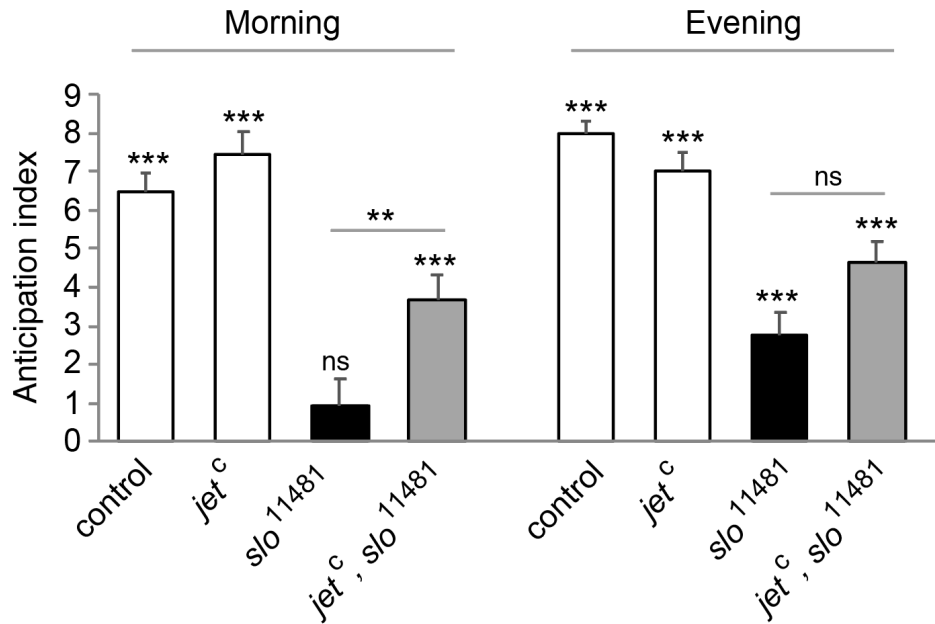
### **Antagonistic Regulation of Circadian Output and Synaptic Development by JETLAG and the DYSCHRONIC-SLOWPOKE Complex**

**Angelique Lamaze, James E.C. Jepson, Oghenerukevwe Akpoghiran, and Kyunghee Koh**



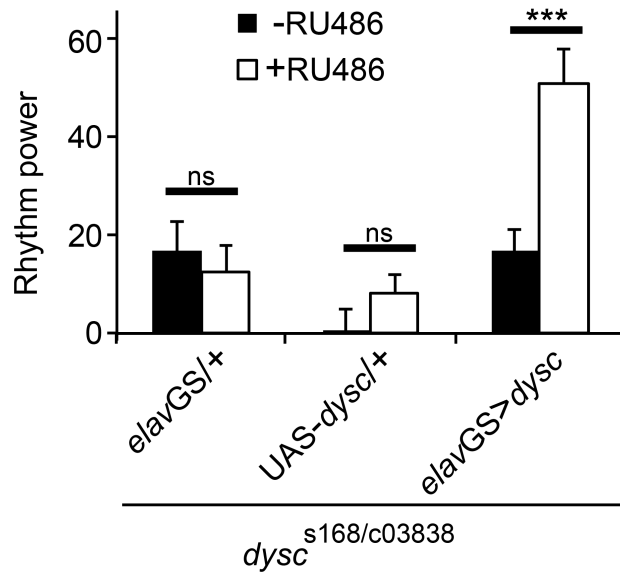
**Figure S1. Loss of DYSC differentially affects morning and evening oscillators, Related to Figure 1.**

(A-C) Anticipation index for the data presented in Figures 1A and 1C. FaasX was used to calculate anticipation index, defined as the slope of the best-fitting regression line for the activity counts over a period of 6 h prior to a light-dark transition. Bars represent anticipation index  $\pm$  standard error. Statistics above the lines indicate whether the two genotypes are different, while those above the bars indicate whether anticipation index of each genotype is different from 0. \*  $p < 0.05$ , \*\*  $p < 0.005$ , \*\*\*  $p < 0.0005$ , ns: not significant; two-way ANOVA (genotype and morning vs evening as the two main factors) followed by Tukey post-hoc tests for pairwise comparisons;  $t$  test with Bonferroni correction for comparing each anticipation index to 0.



**Figure S2. Reduced JET rescues morning anticipation in *slo* mutants, Related to Figure 4.**

(A) Anticipation index for the data presented in Figure 4C. Anticipation index is calculated over a period of 6 h prior to a light-dark transition. Bars represent anticipation index  $\pm$  standard error. Statistics above the lines indicate whether the two genotypes are different from each other, while those above the bars indicate whether anticipation index of each genotype is significantly different from 0. \*\*  $p < 0.005$ , \*\*\*  $p < 0.0005$ , ns: not significant, two-way ANOVA (genotype and morning vs evening as the two main factors) followed by Tukey post-hoc tests for pairwise comparisons; *t* test with Bonferroni correction for comparing each AI to 0.



**Figure S3. Adult-specific restoration of *dysc* partially rescues the arrhythmic phenotype of *dysc* mutants, Related to Figure 5.** Mean power of rhythmicity of *dysc*<sup>s168/c03838</sup> transheterozygous males carrying *elav*-GS, *UAS-dysc*, or both. Flies raised on standard food without RU486 were tested in the presence or absence of 500  $\mu$ M RU486. N = 22-34. Bars represent mean  $\pm$  s.e.m. \*\*\*  $p < 0.0005$ , ns: not significant, two-way ANOVA with genotype and RU486 treatment as main factors, followed by Tukey post-hoc tests, only 3 of which are shown for clarity. The interaction between genotype and RU486 treatment was significant at  $p < 0.005$ .



## Transparent Methods

### Fly strains

Flies were raised on standard food containing cornmeal, yeast, and molasses. Isolation of *jet<sup>c</sup>*, *jet<sup>r</sup>*, and *dysc<sup>s168</sup>* was previously described (Jepson et al., 2012); *cry<sup>02</sup>* was obtained from Charlotte Helfrich-Förster (Dolezelova et al., 2007; Gegear et al., 2008); *per<sup>0</sup>* and UAS-*per16* from François Rouyer (Blanchardon et al., 2001); *dysc<sup>c03838</sup>* from the Exelixis collection at the Harvard Medical School; and *slo<sup>11481</sup>* from the Bloomington Stock Center (BL29918). PDF-Gal4, Mai179-Gal4 (Grima et al., 2004; Siegmund and Korge, 2001), and *elav*-GS (Osterwalder et al., 2001) were obtained from Drs. Amita Seghal, François Rouyer, and Haig Keshishian, respectively. All mutant flies were outcrossed to the iso31 (*white*-) background at least 5 times, except for *per<sup>0</sup>* flies. In the *per* rescue experiments, all flies had the same mixed genetic background between *per<sup>0</sup>* and iso31.

### Locomotor assays

To assay locomotor behavior, 2- to 5-day old male flies were entrained to a 12 h:12 h LD cycle for at least 3 days and placed individually in glass tubes containing 5% sucrose and 2% agar. Locomotor activity was monitored using the *Drosophila* Activity Monitoring System (Trikinetics) at 25°C under indicated light conditions. For conditional expression of *dysc* using *elav*-GS, stock solution of RU486 dissolved in ethanol was added to food containing 5% sucrose and 2% agar to a final concentration of 500 µM. Food with 1% ethanol without RU486 was used as a vehicle control. For quantification of circadian behavior in constant conditions (DD, RR or LL), activity counts (beam breaks) were collected in 30-min bins over a 6-day period, and power of rhythmicity (rhythm strength) was determined using Fly Activity Analysis Suite for Mac OSX (FaasX, M. Boudinot). The power of rhythmicity is defined as the difference between the  $\chi^2$

value and the significance value at  $p=0.05$ . Average rhythm power was determined for all flies including arrhythmic ones. Individual actograms were generated using ClockLab (Actimetrics), and 24 h activity plots showing the mean beam breaks per 30-min bin over a 1-3 day period were generated using FaasX, which was also used to calculate anticipation index. Anticipation index is defined as the slope of the best-fitting linear regression line over a period of 6 h prior to the light-dark transition. The slope was normalized so that the maximum activity count for a given period was set to 100.

### **Measurement of synaptic bouton number and size at the larval NMJ**

The morphology of synapses from muscle 6/7, segment 3, from wandering 3<sup>rd</sup> instar larvae was assessed using an Olympus Fluoview confocal microscope. Larvae from both sexes were pooled. Larvae were dissected in a low  $\text{Ca}^{2+}$  HL3.1 solution of composition (mM): 70 NaCl, 5 KCl, 0.2  $\text{CaCl}_2$ , 20  $\text{MgCl}_2$ , 10  $\text{NaHCO}_3$ , 5 Trehalose, 115 Sucrose, and 5 HEPES, pH 7.2. Dissected larval fillets were fixed in 4% PFA (in PBS) for 10-20 mins at room temperature. For immuno-staining, antibodies were diluted in PBS with 0.15% Triton-X and 5% goat serum. Fluorescently conjugated (Alexa-488) anti-HRP (Jackson ImmunoResearch Labs Cat# 123-065-021, RRID:AB\_2314646, 1:200) was used to label neuronal membranes. The number of boutons was quantified for each synapse using an antibody against cysteine string protein (CSP; Developmental Studies Hybridoma Bank Cat# DCSP-2 (6D6), RRID:AB\_528183, 1:1000), which specifically labels the presynaptic bouton (Zinsmaier et al., 1990). Goat anti-mouse Alexa-fluor 555 (Molecular Probes, 1:1000) was used to label the anti-CSP primary antibody. Quantification of synaptic morphological parameters was performed and analyzed blind to genotype. Type 1b and Type 1s boutons were counted simultaneously. Synaptic bouton size was measured using ImageJ, with a minimum cut-off size of  $5 \mu\text{m}^2$  (Jepson et al., 2014).

## **Statistical Analysis**

GraphPad Prism was used for statistical tests. Either  $t$  tests for pairs of groups or one-way ANOVAs for multiple groups were performed. If the groups had unequal variances,  $t$  tests for unequal variances or the Brown-Forsythe and Welsh version of ANOVA was used. ANOVAs were followed by Dunnett, Tukey, or Sidak post-hoc tests depending on the number and type of pairwise comparisons performed. For multiple  $t$  tests for the same dataset, Bonferroni correction for multiple comparisons was applied. For comparisons of non-normally distributed data, Kruskal-Wallis tests were performed, followed by Dunn's post-hoc tests.

## Supplemental References

- Blanchardon, E., Grima, B., Klarsfeld, A., Chélot, E., Hardin, P.E., Prémat, T., and Rouyer, F. (2001). Defining the role of *Drosophila* lateral neurons in the control of circadian rhythms in motor activity and eclosion by targeted genetic ablation and PERIOD protein overexpression. *European Journal of Neuroscience* 13, 871-888.
- Dolezelova, E., Dolezel, D., and Hall, J.C. (2007). Rhythm defects caused by newly engineered null mutations in *Drosophila*'s cryptochrome gene. *Genetics* 177, 329-345.
- Gegear, R.J., Casselman, A., Waddell, S., and Reppert, S.M. (2008). Cryptochrome mediates light-dependent magnetosensitivity in *Drosophila*. *Nature* 454, 1014.
- Grima, B., Chélot, E., Xia, R., and Rouyer, F. (2004). Morning and evening peaks of activity rely on different clock neurons of the *Drosophila* brain. *Nature* 431, 869.
- Jepson, J.E., Shahidullah, M., Lamaze, A., Peterson, D., Pan, H., and Koh, K. (2012). *dyschronic*, a *Drosophila* homolog of a deaf-blindness gene, regulates circadian output and Slowpoke channels. *PLoS genetics* 8, e1002671.
- Jepson, J.E., Shahidullah, M., Liu, D., le Marchand, S.J., Liu, S., Wu, M.N., Levitan, I.B., Dalva, M.B., and Koh, K. (2014). Regulation of synaptic development and function by the *Drosophila* PDZ protein *Dyschronic*. *Development* 141, 4548-4557.
- Osterwalder, T., Yoon, K.S., White, B.H., and Keshishian, H. (2001). A conditional tissue-specific transgene expression system using inducible GAL4. *Proc Natl Acad Sci USA* 98, 12596-12601.
- Siegmund, T., and Korge, G. (2001). Innervation of the ring gland of *Drosophila melanogaster*. *Journal of Comparative Neurology* 431, 481-491.
- Zinsmaier, K.E., Hofbauer, A., Heimbeck, G., Pflugfelder, G.O., Buchner, S., and Buchner, E. (1990). A cysteine-string protein is expressed in retina and brain of *Drosophila*. *J Neurogenet* 7, 15-29.