

Fall 2005

Nurses Alumni Association Bulletin, Fall 2005

Paula Levine

Elizabeth K. Prisnock

Sally H. Wagner

John J. Wagner

Follow this and additional works at: https://jdc.jefferson.edu/nursing_alumni_bulletin



Part of the [Nursing Commons](#)

[Let us know how access to this document benefits you](#)

Recommended Citation

Levine, Paula; Prisnock, Elizabeth K.; Wagner, Sally H.; and Wagner, John J., "Nurses Alumni Association Bulletin, Fall 2005" (2005). *Nursing Alumni Bulletins*. Paper 74.

https://jdc.jefferson.edu/nursing_alumni_bulletin/74

This Article is brought to you for free and open access by the Jefferson Digital Commons. The Jefferson Digital Commons is a service of Thomas Jefferson University's [Center for Teaching and Learning \(CTL\)](#). The Commons is a showcase for Jefferson books and journals, peer-reviewed scholarly publications, unique historical collections from the University archives, and teaching tools. The Jefferson Digital Commons allows researchers and interested readers anywhere in the world to learn about and keep up to date with Jefferson scholarship. This article has been accepted for inclusion in *Nursing Alumni Bulletins* by an authorized administrator of the Jefferson Digital Commons. For more information, please contact: JeffersonDigitalCommons@jefferson.edu.



*Nurses
Alumni Association
Bulletin*

Diploma School of Nursing
Thomas Jefferson University Hospital
1895-2005

Fall 2005

** Meetings * Annual Luncheon **

Regular Meetings Dates

- Tuesday, September 13, 2005, 11:00 am
- Tuesday, November 8, 2005, 11:00 am
- Tuesday, January 10, 2006, 11:00 am
- Tuesday, March 14, 2006, 11:00 am
- Tuesday, September 12, 2006, 11:00 am

The above meetings are held in the Edison Building, Room 1229
130 South 9th Street, Philadelphia, PA 19107

Annual Meeting

Saturday, May 6, 2006, 10:30 am
Solis – Cohen Auditorium, Jeff Alumni Hall
1020 Locust Street, Philadelphia, PA 19107

Annual Luncheon

Saturday, May 6, 2006
Social Hour 11:30 am
Luncheon 12:30 pm
Jefferson Alumni Hall, 1020 Locust Street
Philadelphia, PA 19107

Nurses Alumni Office
130 South 9th Street, Suite 724, Philadelphia, PA 19107
Phone: 215-955-8981
E-Mail: nurse.alumni@mail.tju.edu

Alumni Association of the School of Nursing

Table of Contents

2005 – 2006 Meeting Date Calendar	Inside Front & Back Cover
2006 Annual Luncheon & Meeting Notice	Inside Front & Back Cover
Officers, Committee Chairs, Satellite and Volunteers	.2
Bulletin Publication Committee	.2
The President's Message	.3
Treasurer's Report	.4
Resume of Minutes	.7
Office News	.10
Committee Reports	
Relief Trust Fund	.12
Satellite - Harrisburg Satellite Area	.12
Bulletin	.12
Scholarship	.12
Nominating	.12
Social	.13
Development	.13
Annual Giving	.14
Janet C. Hindson Award Recipients and Nominees	.20
Janet C. Hindson Award Qualifications	.21
Quotes from Janet C. Hindson's Recipients Letters	.22
Quotes from Letters on Nursing at Jefferson	.24
Biography of Lenora Schwartz, '66	.26
News About Graduates	.28
Memories	.32
Odds & Ends	.34
How I got my Education	.36
U. S. Cadet Nurse Corps	.38
Normandy Nightingales Weathered War's Worst	.40
Happy Birthday, To Be 80 or more	.41
50 th Anniversary Class	.44
Center page	.46
Luncheon Attendees	.48
Class News	.50
In Memoriam, Names of Deceased Graduates	.72
Additional Information, Pins, Transcript & Address Info	.73
Constitution and By-Laws	.75
Scholarship Fund Application	.83
Certification Reimbursement Application	.85
Relief Fund Application	.87
List of Hotels	.89
Campus Map	.90

Officers for 2005-2006

Nurses Alumni Association

The Bulletin Publication Committee 2005

Paula Levine '68
Elizabeth K. Prisnock '47
Sally H. Wagner '54
John J. Wagner, Volunteer

The Bulletin is published annually by Jefferson Nurses Alumni Association Thomas Jefferson University Hospital 130 South 9th Street, Suite 724 Philadelphia, PA 19107-5233

Officers

Nurses Alumni Association 2005 - 2006

President

Sarah (Sally) Hindson Wagner '54

President-Elect

Jeanetta Capotosto Clark '64

Vice President

Jane Ryan Dietrich '59

Treasurer

Paula Levine '68

Recording Secretary

Nancy Thompson Powell '51

President Ex Officio

Alice C. Boehret '42

Board of Directors

Tamara (Tammy) Tichian Magenta '81
Dolores (Dee) Heckenberger '55
Nancy Dunkle Konstanzer '50
Lorraine Milewski McCall '49
Jeanette (Nettie) Plasterer '51
Flossie Roche '56
Carole Ferry Rosle '56
Mary Greenwood Schaal '63

Committee Chairs 2005 - 2006

Constitution & By Laws
Sally H. Wagner '54

Development

Sally H. Wagner '54

Nominating

Carole F. Rosle '56

Relief Fund Trust

Lorraine M. McCall '49

Satellite

Jane R. Dietrich '59
Joan Keller '58 Coordinator
Central PA Satellite

Scholarship

Dee Heckenberger '55

Social

Jane R. Dietrich '59

Alumni Office

Coordinators
Paula Levine '68
Sally H. Wagner '54

Volunteers

John J. Wagner, Jr.
Frances (Fran) McCall
Betty Prisnock '47
Jeanette (Nettie) Plasterer '51
Lorraine M. McCall '49
Tamara (Tammy)
Tichian Magenta '81



Board of Directors



Volunteers



Central PA Satellite

President's Message 2005

Greetings Fellow Graduates,

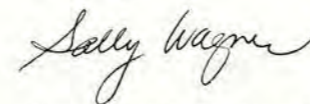
This year's Bulletin publication includes quotes from nominating letters for the Janet C. Hindson Award Recipients, and Nursing Care received at TJU Hospital. All letters were sent to Mary Ann McGinley RN, PhD, Senior Vice President and Chief Nursing Officer at Thomas Jefferson University Hospital. The 2006 publication will include quotes on all the Nominees for the Janet C. Hindson Award. I hope you find this informative and worthwhile.

I appreciate the interest generated by those who have taken the initiative to submit the many articles, personal experiences, poems, quotes and class news, for publication in the Alumni Association's Bulletin. Thank you for sharing and making the Bulletin an enjoyable undertaking.

Jeanetta is busy learning the many facets to the operation of the Alumni Association along with its' enduring history and achievements.

Thank you for your suggestions, encouragement, words of appreciation especially those that acknowledge John's volunteerism for the Alumni Association.

Sincerely,



Sarah (Sally) Hindson Wagner
President



*My friends have made the story of my life.
In a thousand ways they have turned my limitations
into privileges, and enabled me to walk serene
and happy in the shadow cast by my deprivation.*

Helen Keller

Treasurer's Financial Report

July 1, 2004 to June 30, 2005

RELIEF FUND	"The Jefferson Diploma Nurses Relief Fund Trust"	
Activity from January 1, 2005 - June 30, 2005		\$2,152,598
Balance as of January 1, 2005		
<i>Receipts</i>		
Interest/Dividends	\$ 42,612	
Realized Gains/Losses		
Total Receipts:	\$ 42,612	
<i>Disbursements</i>		
Direct Expenses:		
relief benefits to Alumni,	-5,655	
flowers, fiduciary fees	-43,799	
Melville/Lewis Scholarship Fund ('04)	-10,975	
Total Disbursements:	\$ (60,429)	
Balance as of June 30, 2005		\$2,134,782

GENERAL OPERATING FUND	Activity from July 1, 2004 - June 30, 2005	
Balance as of June 30, 2004		\$74,403
<i>Receipts</i>		
Donations (includes CNP & POE Fund)	\$ 33,807	
Luncheon receipts	3,985	
Total Receipts:	37,792	
<i>Disbursements</i>		
Salaries	-20,137	
Applicable benefits	-5,638	
Petty Cash	-552	
Central PA Satellite	-453	
Printshop	-1,147	
Graphics	-115	
Mailings (Provide)	-565	
Luncheon	-4,397	
Commuter tkts	-1,640	
Network Computers:		
computer monthly lease July-June	257	
VistaPlus	169	
Computer	1,384	
Bulletin	9,253	
Legal Fees	2,037	
CNP & POE Fund (for '05)	5,796	
Other	400	
Total Disbursements:	\$ (53,940)	
Balance as of June 30, 2005		\$58,255

Alumni Scholarship Funds & Endowment Fund

ALUMNAE SCHOLARSHIP FUND	AKA "Melville/Lewis Scholarship Fund"	
Fund Balance - June 30, 2004		\$ 321,287.59
<i>Receipts</i>		
Interest and Dividends	\$ 9,861.72	
Realized Gains	(2,570.52)	
Unrealized Gains	25,212.47	
Contributions	39,532.38	
	72,036.05	
		393,323.64
<i>Disbursements - Scholarships</i>		8,793.00
Fund Balance - June 30, 2005		\$384,530.64

MARGURERITE G. BARNETT MEMORIAL STUDENT LOAN FUND	\$71,318.53	
Fund Balance - June 30, 2004		
<i>Receipts</i>		
Interest and Dividends	\$ 2,068.00	
Realized Gains	(533.01)	
Unrealized Gains	5,379.87	
Loan Collections	-	
Misc Loan Activity	2,491.97	
Contributions	-	
	9,406.83	
		80,725.36
<i>Disbursements - Scholarships</i>		-
Fund Balance - June 30, 2005		\$80,725.36

NURSES ALUMNI ASSOCIATION EDUCATIONAL FUND	AKA "Elizabeth Ent Educational Fund for 2nd Careers"	
Fund Balance - June 30, 2004		\$65,556.00
<i>Receipts</i>		
Interest and Dividends	\$ 1,917.31	
Realized Gains	(442.42)	
Unrealized Gains	4,946.68	
	6,421.57	
		71,977.57
<i>Disbursements - Scholarships</i>		2,750.00
Fund Balance - June 30, 2005		\$69,227.57

DIPLOMA SCHOOL OF NURSING ALUMNI ASSOCIATION	AKA "Mabel Prevost Fund for Graduate Studies"	
Fund Balance - June 30, 2004		\$ 151,110.48
<i>Receipts</i>		
Interest and Dividends	\$ 4,419.52	
Realized Gains	(1,019.80)	
Unrealized Gains	11,402.39	
	14,802.11	
		165,912.59
<i>Disbursements - Scholarships</i>		11,500.00
Fund Balance - June 30, 2004		\$154,412.59

ALUMNI SCHOLARSHIP FUND

Fund Balance – June 30, 2004 \$113,437.32

Receipts

Interest and Dividends	\$ 3,317.70	
Realized Gains	(765.54)	
Unrealized Gains	8,559.68	
	11,111.84	

124,549.16

*Disbursements – Scholarships*4,000.00
Fund Balance – June 30, 2005 \$120,549.16

NORA E. SHOEMAKER SCHOLARSHIP FUND

Fund Balance – June 30, 2004 \$221,937.71

Receipts

Interest and Dividends	\$ 6,491.00	
Realized Gains	(1,497.80)	
Unrealized Gains	16,746.82	
	5,000.00	
	26,740.02	

248,677.73

*Disbursements – Scholarships*10,000.00
Fund Balance – June 30, 2005 \$238,677.73

MARIAN S. CAREY ENDOWED FUND

Fund Balance – June 30, 2004 \$10,536.32

Receipts

Interest and Dividends	\$ 308.15	
Realized Gains	(71.10)	
Unrealized Gains	795.05	
	1,032.10	

11,568.42

Disbursements – Scholarships–
Fund Balance – June 30, 2005 \$11,568.42

CLINICAL NURSE PRACTICE AND PATIENT OUTCOME ENDOWED FUND

For the Fiscal Year Ended June 30, 2005

Permanently Restricted \$ 29,8510.73

Total Trust Fund Balance \$29,510.73

AUDITOR'S FINANCIAL REPORT**TJUH NURSING ALUMNI ASSOCIATION**

For the Fiscal Year Ended June 30, 2005

Revenues

Contributions and Other Income \$ 37,792.00

Total Revenues \$ 37,792.00

Expenses

Salaries & Wages	\$ 2,0137.61	
Fringe Benefits	5,638.60	
Office Supplies	674.82	
Others Expenses	8,053.28	
Printing & Copying	1,278.99	
Parking Expense	804.00	
Computer Supply	210.00	
Computer Leases	315.92	
IS Indirect Charges	316.62	
Outside Services	675.00	
Expense Reimbursement	447.02	
Other Direct Expenses	2,889.37	
Inter-Departmental Charges	3,494.75	
Total Expenses	\$ 44,935.98	

Excess Of Revenues Less Expenses \$ (7,143.98)

Resume Of Minutes

September 14, 2004

8 Members Present

The minutes from the previous meeting were read and approved as read. The Treasurer's report was read and approved as read. Committee reports were given by the respective chairpersons.

Old Business

1. The Alumni's monies have been transferred to the Hospital Department account.
2. Sally Wagner, Paula Levine, and Jeanetta Capostosto Clark met with Dr Brucker about the Relief Fund, Orphan's Court, Scholarships and the CNP and POE Fund.

New Business

1. Met in the Madelline Ullom Conference Room.
2. Mary Schaal announced that a party for the 30th Anniversary of the College of Health Professions will be at the Constitution Center, 6-9pm, November 21, 2004.
3. Mary Schaal announced the Methodist Associate Degree Program has 64 students, Geisinger has 35 students. Jefferson CHP is 60% BSN and 40% AD. There are 65 seniors, 98 juniors, and 150 students in the Graduate Program. There are a total of 600 students. Mentors are needed for the students. TJU is offering scholarships.
4. Marian S. Carey account - can use only interest on the \$9,500 principle. Discussion on what to do with the account?

November 9, 2004

12 Members Present

The minutes from the previous meeting were read and approved as read. The Treasurer's report was distributed and accepted as read by Paula Levine. Committee reports were accepted as read by the Chairpersons.

Old Business

1. Funds: discussion on Scholarship Fund gift.
2. Relief Fund Trust: Mary Schaal stated the Relief Fund should be maintained as is. Her letter to Sally Wagner regarding her reasons was read. Trust Fund officer at Wachovia has stated there is a question regarding if the funds should be used for flowers and the entire cost of the Bulletin. Proposed changes to the Fund document were suggested. Voting was done to determine the interest in dividing the Fund and sending a portion to the CNP & POE Fund. The majority voted not to divide the Relief Fund. Sally had met with a lawyer regarding making changes to the Fund. Suggested having a Letter of Agreement with Wachovia for changes rather than incur the expense of going to Orphan's Court. Sally and Paula will meet with Wachovia officers. Relief Fund to be terminated in 2062 - 80 years after the last 1982 graduation class if all the graduates are determined to be deceased.

New Business

1. Jeanetta Clark is currently a volunteer in the Alumni office. May become part-time office coordinator - to be determined.
2. All meetings to be held at 11am.
3. Will make book-mark emblems to be distributed as a thank-you for donations and also at the annual luncheon.

*A friend is someone who knows the song of your heart,
and can sing it back to you when you have forgotten the words.*

Anonymous

January 11, 2005
8 Members Present

Minutes from the previous meeting were distributed, read, and approved as read. Treasurer's report was distributed and accepted as read by Paula Levine. Committee reports were given by Chairpersons.

Old Business

1. 30th Anniversary party of the Jefferson College of Health Professions at the "We the People" Center was very enjoyable. An American flag and war memorabilia from Iraq were presented to the University by a Jefferson nursing graduate.

New Business

1. Mary Schaal announced the new education building at 11th & Locust will be opened September 2007.

March 8, 2005
8 Members Present

Minutes from previous meeting were distributed, read, and approved as read. Treasurer's report was distributed and accepted as read by Paula Levine. Committee reports were presented by Chairpersons.

Old Business

1. Sally Wagner relayed that Ron Keller stated that in order to have the Marian S. Carey Trust Fund account transferred to the CNP & POE Fund, the Alumni Association would have to go to Orphan's Court.
2. Sally Wagner reported that Ron Keller also stated that the Alumni would need to get the approval from Dean Erdman in regards to having a Memorandum of Understanding on word changes to the Melville-Lewis Scholarship Fund. Sally will meet with Dean Erdman.

New Business

1. Decided to give award to Joan Keller, Dot Long, and Nancy Powell, for their dedication and hard work for the Alumni Association. Everyone agreed.

Annual Meeting May 7, 2005
47 Graduates in Attendance

Ballot was presented with openings for the nomination from the floor for 2 Directors, each for a term of four (4) years.

Slate

1. Florence (Flossie) Roche, 1956,
2. Dolores (Dee) Heckenberger, 1955,
3. No nominations from the floor.

Slate approved. Secretary's report was read and accepted as read. Treasurer's report was accepted as read.

Committee Reports

Scholarship: Dee Heckenberger stated two scholarship requests were received and granted. A reminder to everyone that funds are granted for certification in nursing specialties.

Development: Sally Wagner stated Annual Giving letters were mailed in January. Funds received to date total \$24,705: operating expenses \$12,870., Clinical Nursing Practice and Patient Outcomes Endowed Fund (CNP&POE) \$8,385., and dues \$3,450.

Relief: Lorraine McCall announced that currently two (2) graduates are receiving assistance. Will submit follow-up letters in 6 months.

Bulletin: Sally Wagner reminded everyone that all articles and reports for the 2005 Bulletin are due by July 15, 2005.

By-Laws: Sally Wagner announced revisions to the By-laws. The revisions were approved by the attendees. The By-laws with revisions will be published in a tear-out section in the 2005 Bulletin.

Satellite: Jane Dietrich was busy with the Luncheon preparations. Central PA satellite spokesperson, Bertha Geary stated they have four (4) meetings a year which are well attended (15-20 graduates). They have good speakers.

Social: Jane Dietrich was busy with the Luncheon preparations.

Nominations: Carole Rosle stated we need more graduates involved. Dee Heckenberger and Flossie Roche will serve a four (4) year term on the Board of Directors.

Office Coordinators: Paula Levine and Sally Wagner reported that 74 birthday flower arrangements/cards were sent since last May's annual meeting. A new computer was purchased for the office because the lease was finished on the old computer and in keeping with being a Hospital Department, a computer needed to be purchased.

Old Business

1. Paula and Sally met with the Relief Trust Fund trustees, Licia Marrone and David Glickman at Wachovia on January 4, 2005 in regards to having a "Memorandum of Understanding" for word changes in the use of Fund monies to include birthday flowers and the Bulletin publication. Licia called the first week of April to say she hadn't heard from the governing committee but will in time for the Annual Meeting. As yet, Sally has not heard from Licia Marrone.
2. Sally met with Ron Keller, comptroller at TJU, on November 2, 2004 in regard to having a "Memorandum of Understanding" for word changes to the Melville-Lewis Scholarship Fund to reflect current practices as administered by the Scholarship Committee and Board of Directors and to inquire if the Alumni Association could incorporate the Marian S. Carey Trust Fund with the CNP & POE Fund since only the interest may be used by the Alumni Association. Ron

Keller needed to check with the University Legal Department. Ron notified Sally the end of March that Dr. Erdman needed to make the decision. The Marian S. Carey Trust Fund cannot be transferred unless the Alumni Association goes to Orphan's Court for permission.

3. All meetings, except the annual meeting, are started at 11am on the designated dates.

New Business

1. Dr. Mary Schaal, Chairperson/Professor, Department of Nursing, TJU Jefferson College of Health Professions reported on new changes in Programs: Methodist and Geisinger AD Programs administered by the Department of Nursing, plans for a new building for clinical practice by all students at Jefferson, starting a PhD in Nursing and starting a Nurse Anesthetist Program. Over 600 students enrolled in the Nursing Programs with next year being over 700. There are 40 fulltime faculty, 70 part-time faculty and volunteers. Students have clinical practice rotations over the 24 hour time-period. Graduation is May 23, 2005.
2. Appreciation gifts awarded for years of dedicated services to:
Dorothy Ranck Long, class of 1939
Nancy Thompson Powell, class of 1951
Muriel Joan Keller, class of 1958

Respectfully submitted,
Nancy T. Powell, '51
Recording Secretary

*We cannot tell the precise moment when friendship is formed.
As is filling a vessel drop by drop there is at least a drop
which makes it run over; so in a series of kindnesses
there is at last one which makes the heart run over.*

James Boswell

Alumni Office News

Alumni Office News

Betty Piersol sends her regards to everyone and is most appreciative of the many kind thoughts and remembrances sent to her. Betty continues to live at the Heritage House for Assisted Living, 1527 Lombard Street, Room 507, Philadelphia, PA 19146. (215) 772-1067. Betty welcomes all correspondence and visitors.

Stop by or call beforehand to visit with us at the Alumni Office when you're in the city. We are usually in the office Tuesday, 8am to 12 Noon. Our office is in the Edison Building, Suite 724, 130 South 9th Street, Philadelphia, PA 19107.

Our telephone number is (215) 955 8981. We return all voice messages as soon as possible, so please leave a message.

Help us to keep your records accurate. Please send us name, address, telephone and e-mail changes.

You may reach the Nurses' Alumni Association by E-mail: nurse.alumni@mail.tju.edu

Birthdays

Each month birthday flower arrangements and/or cards are sent to our age 80 and over graduates. We receive so many "Thank You" notes letting us know how much they appreciate being remembered, and for the beautiful floral arrangements. If you know of any Diploma or White Haven graduate who is age 80 or over, send us the following information: first, maiden and married name, year of graduation, current address, birthday (include month, date, and year of birth), Social Security number, and telephone number.

Commitment to Excellence

If you did not receive a copy of this book when the Diploma School of Nursing closed in 1982, and would like to have a copy, let us know. We will send you a copy. This book is an excellent reference on the history of the Diploma School of Nursing.

Nosokomos

We need a 1929, 1930, and 1968 Nosokomos to complete our set of yearbooks in the Alumni Office.

We have duplicate yearbooks for a number of years. If you need a yearbook and it's one of our duplicates, we'll be happy to give it to you. Please call and let us know which year you're looking for.

Double Your Dollars

If you or your spouse, work for a matching gift company, you can double and sometimes triple your gift by including a completed matching gift form with your gift.

Lodging

When making a reservation or when registering at a hotel or a bed & breakfast in Philadelphia, ask if they give Jefferson rates. Tell them you are affiliated with Thomas Jefferson University. Be sure to have your Jefferson identification card with you. Accommodations can also be made at the Martin Building at TJU. The list of Hotels, B&B's and the Martin Building addresses are shown in the back of the Bulletin.

Discount Parking for Alumni

Alumni may get discount parking rates by purchasing coupons for use in the Jefferson Parking garage located at 11th & Locust Street. The \$5.35 coupons may be used anytime after 2:30 pm on weekdays, anytime on weekends and holidays to a maximum of 18 hours parking. Coupons can be purchased at the Commuter Service Office, 1009 Chestnut Street, Monday through Friday, 7am to 5:30pm. Telephone: (215) 955-6417. You will need your driver's license and Alumni identification card.

Identification Cards

If you lost your Jefferson Alumni identification card or if you never received one, please call the Alumni Office and we'll send one to you.

Volunteers

We are most appreciative to our dedicated "Stuffication Engineers", Betty Prisnock, Nettie Plasterer, Fran and Lorraine McCall, Tamara (Tammy) Tichian Magenta and Jeanetta Capotosto Clark. They assist with all the mailings most graciously, making a tedious task more pleasant.

Bertha Destan Geary '48 greets everyone, keeps attendance, collects voting records and whatever else we need to be done at the Annual Meeting. Many thanks, Bert. ***** If anyone is interested in taking on this responsibility, please contact the Alumni office. Bert would like to retire.

Archives

Anyone interested in putting their memorabilia from Jeff in the archives, please call or contact the Archives Office and ask for F. Michael Angelo.

F. Michael Angelo, MA
University Archivist & Special Collections Librarian
Scott Memorial Library, Rm. 401

E-mail: michael.angelo@mail.tju.edu

E-mail: archives@jeffline.tju.edu

Web Page: <http://jeffline.tju.edu/archives/phdil/>

Hours 1:30 pm - 5:00 pm

Monday through Friday or by appointment.

We still have pictures that depict the three uniforms worn by the Jefferson students and were donated by the Class of 1942, in the office. If anyone would like to receive a picture please notify us. Picture is shown to the right.

Sally Wagner
President

Contacting the Alumni Office? Here's how to do it...

Nurses Alumni Association
Thomas Jefferson University
130 South 9th Street, Suite 724
Philadelphia, PA 19107-5233
Telephone: (215) 955-8981
E-Mail: nurse.alumni@mail.tju.edu



Committee Reports

Relief Fund

This has been a very quiet year. As of April, we are sending monthly checks to two (2) graduates. At six months, we will re-evaluate their circumstances. If there is still a need for them to receive monthly assistance checks they will be issued for another 6 months. All applications, that are honored, will be reviewed every six (6) months.

If you need money for an emergency or you know of any of our nurses in need, please write us a letter or fill out a #1 application. We will then write a letter and send a #2 application.

Respectively Submitted,
Lorraine. M. McCall '49
Chair, Relief Fund Committee

Central PA Satellite

The Central PA Satellite schedules 4 meetings a year. The two remaining meetings are September 1st and November 3rd, 2005. Meetings in the Harrisburg area start at 10:30 am with a speaker and luncheon. It is a great opportunity to meet other Alumni in the area. For more information on Central PA Satellite, please contact Joan Keller at 717-469-0233 or E-mail: arlankeller@verizon.net

Respectively Submitted,
Joan Keller '58
Satellite Coordinator

Bulletin

Many thanks for all your informative articles with pictures on your life experiences, and sending photos of your birthday bouquets, so we may use them as floral photos, poems and class news updates. Please remember that all information for publication must be in the office by July 15. We hope you continue to enjoy reading and looking forward to receiving the Bulletin as much as we enjoy putting it all together.

Respectively Submitted,
Sarah (Sally) Hindson Wagner '54
Chair, Bulletin Committee

Clara Melville/Adele Lewis Scholarship Fund 2004-2005

Two scholarship applications were sent and two were returned. Scholarships were granted to the following applicants: (1) Lisa DiMond, daughter of Claudia DiMond (Schmidt) class of '76, and (2) Susan O'Donnell Hagan, class of '79.

All applicants must be a graduate of the Diploma Program, or a close relative (daughter, son, granddaughter/son of a graduate of the Diploma Program planning to attend Jefferson Nursing Program) to be eligible to receive scholarship assistance. Graduates interested in applying for scholarship aid should use the revised application form available in the back of the Bulletin and from the Alumni office. If any diploma graduate is interested in receiving monies from the fund, please direct all inquiries to the Alumni office.

Respectively Submitted,
Dolores Heckenberger, RN, MS '55
Chair, Scholarship Committee

Nominating Committee

For the continuing success of our Alumni Association well into the future, we strongly recommend more of our members, especially younger members, consider being nominated for our Alumni Offices. You can call the office at 215-955-8981 or e-mail: nurse.alumni@mail.tju.edu In May 2006, two directors, Vice President and Secretary, will be elected at the annual meeting. Please consider running for an office to keep our Jefferson Nurses' Alumni Association active well into the future.

Respectively Submitted,
Carole Ferry Rosle '56
Chair, Nominating Committee

Social Committee

On May 7, 2003 we celebrated the 72nd Annual Luncheon of the Jefferson Nurses Alumni Association. It was held at the Jefferson Alumni Hall at 10th and Locust Streets in Philadelphia.

One hundred and ninety (190) alumni attended. Their graduation years ranged from 1933 to 1982. Attendees from 22 states were represented. One hundred and fifty (150) of those attending were celebrating their 5 year anniversaries. The Anniversary participants extended over the graduation years of 1935 to 1980. Special recognition for those celebrating their anniversaries was a priority.

Our most senior anniversary participant was Inga (Lisa) Olofson Wheat of the class of 1935.

Representing the class of 1940 were Norma Zeigler Smith and Ellora Endicott Meyer. We were all respectfully impressed to realize Ellora made the trip from California by herself. She is an inspiration to us all. We are honored to share this wonderful day with our most senior members. Seven of our alumni graduated in classes ranging from 1933 to 1940. We are encouraged and honored by the energetic and spirited nature of their attendance. Representing the class of 1933 was Catherine Gray Payne, a loyal and most senior attendee. The day started off with coffee and our meeting. It was followed by a lively cocktail hour. The weather cooperated. We were able to enjoy the spring flowers blooming in the courtyard. The floral centerpieces arranged for by Nettie Plasterer were beautiful. She also coordinated the presentation of orchid wrist corsages for our senior members. Pink was well represented on our day and was a sweet reminder of our days spent as students at Jeff. Three members of our alumni, Dorothy Rank Long '39, Nancy Thompson Powell '51 and M. Joan LeVan Keller '58, were honored for their

contributions of service to the alumni organization over many years. We are extremely grateful to Sally, our president, Sally's husband John, and Paula Levine for all they do to help make this day such a success. Our banquet manager, Chuck Mullen, has been with us for the past few years. His dedication and his ability to do such a superb job is what helps the day run smoothly. We certainly appreciate all he does for us. We are thankful for all who support our annual luncheon.

Many friendships have been renewed and new friendships have been established through involvement in the alumni organization. We can be proud that we are part of an organization whose members are among the most outstanding individuals of our time. This is our opportunity to celebrate and be in touch. Hope to see you again next year. Have a great year!

Respectively Submitted,
Jane Ryan Dietrich, '59
Chair, Social Committee

Development & Annual Giving

Thank you for your continued support and generosity for the continuation of the Alumni Association and its many endeavors. This allows us to remain solvent while continuing with leaving our legacy at "Jeff". Special thanks to Joan Hughes, Director, Information Systems and Donor Services, Sarah Staley, Donor Services Coordinator and Angie Gantt-Dixon, Assistant Donor Services Coordinator, Jefferson Foundation. Please note, to have your name appear in the Fall Bulletin all contributions must be received by June 30th.

Respectively Submitted,
Sarah (Sally) Hindson Wagner '54
Chair, Development Committee

Friendship isn't a big thing - it's a million little things.

Anonymous

Annual Giving Contributors

1931-1933

\$625.00

Virginia E. Leo
Marie Maxwell
Mildred S. O'Connor
A. Ruth Fennell
Catherine G. Paine

1934

\$110.00

Anna J. Gehrke
Marie K. Lawton
Dorothy K. Raubenhold
Mildred M. Smith
Margaret Y. Snear

1935-1936

\$95.00

Marian B. Coutts
Martha P. Tharp
Elizabeth S. Miller

1937

\$8,170.00

Emma P. Jeske
Helyn Romberg
Harriet R. Zeller

1938

\$380.00

Rachel Bonham
Mary K. Copeland
Mildred G. Durham
Matilda E. Finn
Wilma V. Lewis
Sara K. Little
Edith G. Reeves

1939

\$470.00

Thelma L. Beshgetoorian
Dorothy B. Long
Victoria F. Malinoski
Olga D. Mitchell
Harriet K. O'Connor
Grace E. Petersen
Leah L. Stambaugh

1940

\$225.00

Sara E. Cattermole
Ruth R. Holbrook
Judy J. Kesselring
S. Ellora Meyer
Goldie Byers Pringle
Norma Z. Smith
Marion J. Tracey

1941

\$1,180.00

Clara S. Fitts
Dorothy J. Freeman
Gene R. Jerabek
Helen S. Joslin
Esther J. Martin
Frances H. Rumberger
Jean Lockwood Wagner

1942

\$650.00

Alice C. Boehret
Lois L. Kelly
Madaline L. Knight
Anna E. Krall
Nancy H. Maxwell
Anna Kathryn McCormick
Irene M. Polner
Joyce L. Sproch
Beatrice Staron
Dorothy F. Templeton
Rhoda A. M. Weisz

1943

\$510.00

Lucy A. Antrim
Marie H. Breon
Kathryn S. Combs
Esther Kahn
Mary-Jo Lake
Ruth E. Schmitt
Ruth I. Sunderland
Betty L. Suttles
Marie L. Thompson
Elaine M. Trankley
Nellie S. Warshaw
Dolores D. Wilkinson

1944

\$175.00

Mary K. Brill
Vivian F. Gragg
Rosie S. Jones
Maureen S. McCool
Geraldine S. Meyer
Elizabeth L. Spangler

1945

\$1,130.00

Col. Catherine T. Betz
Nellie M. Chillem
Gladys V. Druckenmiller Backensto
Miriam E. Galloway
Betty D. Heuston
Sarah E. Huston
Caroline R. King
Anna Kuba
Rita Vitetta Labate
Bella S. Martinez
Dorothy D. Mowery
Lenore L. Strigari
Ruth S. Vivian

1946

\$2,055.00

Jeanne M. Burkins
Jeanne K. Collevachio
June S. Eyerly
Dorothy A. Fessler
Jane J. Fox
Betty M. Frommelt
Laura R. Hart
Idabelle L. Hartley
Emelia C. Hayman
Shirley S. Hersey
Alice R. Hornickel
Elaine S. Kimbel
M. Elizabeth Koch
Jeanne L. Lebkicher
Louise P. McGowan
Mary F. McQuown
Jean G. Metzler
Laura Maurer Pollack, MD
Evelyn S. Riggan
Betty W. Saunderlin
Muriel H. Scott
E. Dorothy Strachan
Betty Y. Zehner

1947

\$1,435.00

Ann Boyer
Elizabeth Cooper
Helen M. Corrigan
Carol S. Covert
Jane B. Guerin
Martha A. Hershberger
Judith A. Hess
Mariea B. Hunter
Julia Margaret King
LaDean B. Kramp
Virginia S. Lawrence
Marjorie J. Logan
Barbara H. Marks
Janet E. Maurer
Betty S. McConnell
Grace U. Mease
Elizabeth J. Miller
Florence M. Mitchell

Doris M. Moore

Marie Louise Peters
Elizabeth K. Prisnock
Flora Simpson
Elizabeth M. Spencer
Laura J. Tobia
Paula J. Tyler

1948

\$1,445.00

Eleanor Adams
Hazel T. Barkdoll
Norma E. Bicking
Betty L. Budrow
Jeanne M. Campbell
Anne O. Carballo
Anna Mae Chalupa
Mercedes F. Christ
Betty T. Daughenbaugh
Dorothy Diehl Dickie
Kathryn H. Eyrich
Dawne M. Ferich
Bertha Destan Geary
Sophia H. Gormish
Faye D. Groff
Catherine L. Haas
Irene Kaufman
Lois B. Kelley
Bernadine M. Malinoski
Inez Cornelius Mirenda
Nancy L. Ritzman
Althea C. Snow
Doris Stevens
Phyllis M. Szewczak
Joyce S. Weik
Jean S. Wighaman

1949

\$720.00

Shirley S. Bittner
Bette Jean Borkey
M. Lucille F. Henkelmann
Marjorie B. Hoeck
Charmaine Kissinger
Hazel S. Kogler
Jean M. Lamson
Marie K. Larsen
Carolyn L. Marchione
Lorraine M. McCall
Priscilla Nicholson
Elsie Skvir Nierle
Fay A. Pepperman
Margaret H. Pontzer
Doris Ann Schuman
Dorothy L. Sheets
Louise M. Strayer

1950

\$10,922.00

Barbara F. Ackerman
Rita Bolinsky
Anne E. Breach
Mary Louise Brumbaugh
Diane P. DeHuff
Louise Douglas
Mary Louise Foy-Failla
June M. Fujita
Emily N. Hollenbach
Nancy A. Konstanzer
Jean Hohe Larkin
Elinore S. Lynch
Joyce A. Madara
Ruth S. Merroth
Rose M. Mulligan
Germaine Nadler
Martha L. Peter
Helen M. Rosencrans
Wealthy E. Shutt
Ellen B. Stahl
Geraldine E. Strye
Marie M. Wagner
Jane H. Whipple

1951

\$985.00

Jane E. Aires
Barbara Arkes
Barbara E. Beam
Grace Carleton
Elizabeth Moll Chevola
June B. Graf
Anna J. Humphreys
Nancy Kohut
Marilyn J. Marshall
Phyllis G. McClure
Jeanne V. McLaughlin
Kathie B. Moody
Mary Kate Morgan
Norma J. Murray
Marian E. Narbuth
Jeanette Plasterer
Nancy E. Powell
Ethel I. Rust
Martha J. Santoro
Joanne G. Sencindiver
C. Louise Zug Souders
D'Etta A. Tracy
Janet M. Warden

1952

\$375.00

C. Ann Brugger
Lillian M. Haeberlein
Jane A. Johnson
Paige Victor Sencindiver, MD
Joyce E. Simpkins
Nancy L. Stoicovy
Barbara W. Tichian
Ann S. Walters

1953

\$200.00

Margaret M. Curfman
Patricia A. Diehl
Thelma L. Goodhart
Cathleen E. Keating
Jane R. Lemmon
Janet E. Meredith
Emogene Oskin

1954

\$1,205.00

Genevieve I. Batten
Elaine Carter
Christine C. Elmer
Joan M. Frati
Mary Jane Gabriel
Peggy A. Gerard
Rena V. Graham
Carole G. Hammon
Louisa E. Hoch
Marcia G. Martin
Phyllis B. Ostman
Janet Oswald
Joan K. Purnell
Margaret I. Riemer
Roberta E. Smith
Patricia J. Steinhagen
Betty R. Stone
Sarah A. Wagner

1955

\$930.00

Georgene B. Callahan
Margaret E. Deming
Marietta Jane Hancock
Dolores H.
Heckenberger
Claire M. Ioannucci
Dawn D. John
Mildred C. Kline
Hazel Reihart Kline
Patricia C. Magley
Adrienne M. Rodgers
Joyce Salazar
Carol Schmidt
Shirley A. Schneider
Esther Nancy Scott
Lorraine J. Skinner
Nannette E. Smith
Elizabeth J. Ward

1956

\$530.00
 Margaret C. Baker
 Marguerite L. Domenick
 Marilyn R. Glauber
 Helen Hervada
 Dorothy A. Lalor
 Sandra L. Lord
 Betty D. McElroy
 Joan E. McGinnis
 Marlene M. Mika
 Betty L. Miller
 Joan S. Randolph
 Dixie L. Robinson
 Florence Roche
 Lorene K. Witthoff

1957

\$575.00
 Barbara A. Bellus
 Marialice Bopf
 Mary Catherine Cowen
 June D. Dupnock
 Carol H. Gray
 Georgann J. Miller
 Marion J. Nimey
 Marjorie F. Smith
 Rose Marie Tomasello
 Constance T. Vetter
 Esther Lee Webb

1958

\$960.00
 Barbara J. Borkowski
 Geneva R. Bowman
 Annunciata J. Daneman
 Pearl V. Dougherty
 Nancy E. Griggs
 Lynne M. Gumina
 Edna Wynne Hneleski
 Muriel Joan Keller
 Barbara W. Kelso
 Yvonne R. King
 Margaret J. McClenahan
 Mary Ellen McDonald
 Mary J. Pileggi
 Susanna W. Sagi
 Joan Shimkus
 Doris M. Stephens
 Lois M. Toomey
 Joan C. Tribolet
 Patricia Watanabe

1959

\$1,005.00
 Judith W. Bloes
 Nancy C. Crawford
 Joanne A. D'Alonzo
 Jane P. Dietrich
 Dr. Gloria S. Essoka, PhD, RN
 Joan M. Konzman
 Betty A. Kosko
 Jane W. Larkin
 Thelma S. Malecek
 Sandra D. Marsden
 Janet Carol Mosley
 Vera S. Myers
 Bernadine C. Plocinik
 Ruth A. Simpson
 Carol A. Staas
 Carol Wenzel

1960

\$645.00
 Madeline J. Glass
 Carolyn M. Goepfert
 Joan D. Kelley
 Helen G. Kost
 Judith R. Mearig
 Anne Medsger
 Claire Scott
 Judith E. Stauffer
 Mary Evonne Taylor

1961

\$505.00
 Marjorie K. Berrier
 Janet L. Brechtel
 Mary E. Craig
 Loretta D. Cunnighame
 Rosalie A. Gee
 Jacquelin Harris
 Patricia Hilton
 Susanne Jacobson
 Gale M. Klupt
 Theresa B. Lipinski
 Mary Jill Mascena
 Ann B. McBeth
 Barbara C. Obin
 Barbara Schwartz
 Joan A. Sheahan
 Barbara F. Strong
 Patricia A. Turnbull
 Jane Wills
 Bettylou Woods

1962

\$1,020.00
 Billie Anne Bradley
 Margaret A. Furey
 Patricia A. Goetz
 Leona M. Hansell
 Suzanne Holden
 Patricia D. Kline
 Dolores J. Knepp
 Theresa A. Lamberth
 Susan E. Leake
 Carolee J. Mitchell
 Marcie G. Moore
 Linda L. Neveling
 Janet B. O'Brien
 Marian L. Pell
 Rosemary C. Smith
 Joan A. Spece
 Karen E. Wilson

1963

\$910.00
 Marjorie J. Berleth
 Margaret I. Bethanis
 Suzanne E. Blackburn
 Dorothy A. Brown
 Theresa R. Cooke
 Myla M. Einwechter
 Linda M. Ely
 Ann W. Fronduti
 Nancy M. Gallagher
 Mary Elizabeth Speicher Gillin
 Margaret C. Hargrave
 Loretta Kurland
 Jean A. McConnell
 Joy A. McGann
 Mary Lou McGinn
 Doris K. Townsend
 Judith B. Yost

1964

\$745.00
 Grace A. Braun
 Isabelle J. Erb
 Roanne I. Heise
 Mary Holverstott
 Susanne H. Klinger
 Judith M. Lynn
 Patricia L. Marquette
 Penelope A. McAlees
 Barbara Narehood
 Elizabeth A. Reed
 Donna K. Ruggieri
 Mary Lou Schubel
 Dorothy L. Stelzner
 Barbara L. Tredick
 Barbara Violanti

1965

\$1,710.00
 Gail E. Baker
 Karen M. Bayers
 Judith Getz Buzzell
 Barbara K. Croghan
 Susan A. Croom
 Adrienne F. Daughenbaugh
 Julia C. Flynn
 Lois G. Foxen
 Bonnie E. Freeman
 Margaret S. Frishmuth
 Elaine G. Jacoby
 Peggy Keller
 Sandra L. Kolodziej
 Kay Matejkovic
 Margaret E. McGroarty
 Susan McKinstry
 Joan Morgan
 Judith Moyses
 Pauline Lupo Reiersen
 Janet W. Respass
 Mary K. Rocheleau
 Nancy A. Schraga
 Catherine T. Teti
 Cassandra VanDerslice
 Cheryl A. Weber
 Elisabeth A. Zentner

1966

\$540.00
 Nancy W. Bowman
 Joan Sampson Cupic
 Catherine M. Heller
 Judith H. Hoefle
 Patricia D. Houck
 Clare Marie Karabas
 Agnes H. Kirschner
 Mary Lou Lebsack
 Judith C. Long
 Barbara S. Ruehl
 Judith Kramen Seltzer
 Jean F. Strelzik
 Judith L. Tracy
 Susane Zamitis

1967

\$680.00
 Joanne M. Balmer
 Deidre M. Blank
 Joan Reed Darden
 Sandra L. Fida
 Linda Jean George
 Linda L. Goodman
 Elayne L. Gould
 Joan H. Hampf
 Jane K. Kriebel, RN
 Dolores A. Lingo
 Carol J. McClerkin
 Denise J. McKee
 Sharon L. Murphy
 Sheila C. Rich
 Linda M. Russell
 Marilyn R. Scelba
 Judith Thomas

1968

\$910.00
 Lynn G. Allison
 Judith L. Backstrom
 Dr. and Cyrus E. Beekey, Jr.
 Margaret M. Bischoff
 Dolores M. Brown
 Catherine M. Dirr
 Regina S. Friedman
 Mary E. Getz
 Karen E. Kushto
 Donna L. Libby
 Martina M. Martin, MD
 Kathleen Carlson Mebus, RN
 Suzanne C. Merryman
 Teresa J. Oldroyd

Shirley R. Radzai
 Kathleen A. Schade
 Linda J. Scheetz
 Beth Sherr
 Marie L. Wartella

1969

\$915.00
 Linda M. Barbour
 Sandra J. Bauer
 Marilyn Bergner
 Mary E. Bull
 Marlene C. Burgess
 Mary Lou Burkhardt
 Marilyn A. Guidi
 Dolores T. Hughes
 Ruth Iuliano
 Annie E. Kahn
 Rosemarie M. Malizia
 Carol A. Mannery
 Nancy J. McClees
 Carolyn R. Merryman
 Joan Munyon
 Vera Paoletti
 Lizabeth D. Paxton
 Jean Rakey
 Hope C. Schooley
 Beverly J. Wallace
 Jane L. Wuertth

1970

\$395.00
 Cynthia A. Beal
 Alice L. Conte
 Gail A. Gallagher
 Patricia D. Gallagher
 Sandra Hall
 Elizabeth A. Hessenthaler
 Helen SueLin Hom-Moore
 Linda R. Johnson
 Gail Kaempff
 Stephanie J. McGroarty
 Suzanne M. McLean
 Janet L. Slattery

1971

\$590.00
 Sally A. Blessinger
 Patricia Powers Boger
 Elizabeth A. Coughlin
 Loretta J. Heyduk
 Judith A. Jones
 Eileen M. Moran
 Ruth E. Pearson
 Jane A. O'Hara
 Lt. Col. Annette Brownstein Shuma
 Grace Ann Spena
 Deidre C. Yuknavich
 Mary H. Zimmerman

1972

\$280.00
 Kathleen A. Battle
 Elizabeth E. Corcory
 Patricia A. Hemphill
 Christine Hodder
 Cheryl A. Meyer
 Dolores L. Obert-Thorn
 Donna E. Phelps

1973

\$560.00
 Eugenie Blaher
 Kate G. Felix
 Phyllis Fineman
 Susan A. Franklin
 Marjorie L. Gibson
 Mary Beth Henry
 Karen J. Jaxheimer
 Shelah Luber
 Margaret A. Morthorst
 Beverly S. Siftar
 Mary T. Stec
 Cheryl T. Wenger

1974

\$460.00
 Debora K. Boyle-Borkowski
 Margaret Jane Federico
 Julie R. Fenimore
 Barbara J. Graf
 Patricia S. Hoffman
 Patricia Hoffman
 Maureen Kelly LeFevre
 Margaret L. Martin
 Carla Rossetti
 M. Suzanne Seckinger
 Jeanne M. Stanton

1975

\$460.00
 Donna R. Ambrogio
 Rebecca M. Brown
 Denise E. Capaldi
 Catherine M. Dowhy
 Susanne A. Hoffman
 Regina A. Klinger
 Carolann Mashouf
 Jane H. Mueller
 Linda B. Napieralski
 Theresa O'Brien
 Nancy J. Picarello
 Patricia Walsh
 Anne Woods

1976

\$285.00
 Susan Battagliese
 Claudia J. DiMond
 Andrea Kaye
 Colleen P. Kraus
 Judith Lynn Kunkle
 Janice E. Malloy
 Kathleen J. McNamara
 Sue M. Sauzet-Parini
 Karen C. Shauger
 Leslie M. Tahsler
 Joanne C. Weist

1977

\$270.00
 Joan M. Book
 Terry I. Colella
 Karen L. Emerle
 Susan M. Gallagher
 Betty Anne Hedges
 Cheryl L. Kline
 Ruth E. Lind
 Sari R. Mandel

1978

\$425.00
 Diane M. Carugno
 Lorraine M. DiPietro
 Christine M. Ferry
 Janet P. Huplits
 Ann Miller
 Susan A. Sawula
 Regina T. Schiavello
 Leslie A. Stickley
 Jan E. Vanderveer

1979

\$390.00

Barbara J. DeNardo
Linda C. Foreman
Susan P. Hagan
Diane Foley Osborne
Susan W. Peacock
Rhonda A. Pierce
Sandra Lee Smith
Helene M. Stair-Bolopue
Barbara J. Stewart
Deborah M. Timpano
Sandra L. Tomasello

1980

\$230.00

Linda Herman
Terri B. Martin
Marianne K. Ostrow
Maryann Ragone
Donna Marie Roberts
Jeanne A. Rossiter
Susan J. Sullivan

1981

\$405.00

Kristi Grassi
Tamara Magenta
Debra A. McGarry
Lisa A. Sakser
Dr. Mary G. Schaal
J. Eileen Stone

1982

\$455.00

Patricia J. Barnard
Susan Blomgren
Karen T. Frick
Theresa A. Healy
Jacqueline M. Jones
Theresa A. Sylvester
Dawn P. Kasper
Linda M. Sohanic
Theresa A. Sylvester

Bequests

Estate of Margaret L. Summers, '47
Estate of Mary Murtha, '31

Matching Gifts

Abbott Laboratories
Fund Joan A. Spece, '62
ExxonMobil Foundation
Mariea B. Hunter, '47
The Greater Tacoma
Community Foundation
Margaret McGroart, '65

Johnson & Johnson
Family of Companies
Deidre Blank, '67

Mobil Foundation, Inc.
Gladys Druckenmiller-
Backensto, '45

Friends

\$1,140.00

Mr. Joseph Eubanks
Mr. Francis J. Kenney
Mrs. Joan G. Lutz
Joseph L. O'Brien, MD
Mrs. Helen Dix Steward

Memorial & Honorium Gifts

In Memory of

Rose M. Angelo '54
Christine C. Elmer '54
(Classmate)

Geraldine H. Bechle '39
Leah L. Stambaugh '39
(Classmate)

Walter S. Bloes, MD '59
(JMC Alum)
Judith A. Bloes '59
(Spouse)

Doris E. Bowman '42
Lois L. Kelly '42
(Classmate)

Dorothy A. Brown '63
Suzanne E. Blackburn '63
(Classmate)

Thomas Carr
Margaret C. Hargrave '63

Joan Cramer '55
Joyce Salazar '55
(Classmate)

W. Eggers
Judith L. Tracy '66

Samuel M. Eppley, MD
'61 (JMC Alum)
Doris M. Stephens '58

Nancy G. Fager
Louise M. Strayer '49

Dawne M. Ferich '48
James Ferich (Spouse)

Marcella G. Geissler '57
Barbara A. Bellus '57
(Classmate)

Alan M. Gibbs
Terri B. Martin '81

Elizabeth E. Greenlee '50
June M. Fujita '50
(Classmate)

Ann F. Griffaw '60
Madeline J. Glass '60

Janet Hindson '50
Barbara F. Ackerman '50
(Classmate)
Kathleen A. Battle '72
June M. Fujita '50
(Classmate)

Lorraine A. Jettner '51
Grace Carleton '51
(Classmate)

Elizabeth Moll Chevola '51
(Classmate)

Nancy Kohut '51
(Classmate)
Marilyn J. Marshall '51
(Classmate)

Sandra J. Kavalunis '66
Agnes H. Kirschner '66
(Classmate)

Scott King
Julia Margaret King '47
(Spouse)

Dorothy B. Long '39
Muriel Joan Keller '58
Elinore S. Lynch '50

Dorothy LoSasso '51
Barbara Beam '51

Marie T. McCullough
Susanne A. Hoffman '75

Bertha M. McKinstry
Susan McKinstry '65

C. D. Miller
Georgann J. Miller '57
(Spouse)

Mary Monk, '39
Applehill Surgical
Associates, LTD
Autumn House at
Powder Mill, Inc.
Janet S. Basehoar
Dr. & Mrs. Cyrus E. Beekey, Jr.
Bortner's Janitorial Service
Mr. & Mrs. Edward S. Bowles
Mr. & Mrs. Frederick V. Cluck
Connelly Foundation
Mr. & Mrs. Arthur C. Crovatto
Dr. & Mrs. William Taylor Delp
Martha Flegal
Mr. & Mrs. Stanley C. Herr
Judith A. Hess, '47
Ruth H. Jones '43
Phyllis A. Kennedy
Holly R. Kruper
Margaret M. Logue
Mary R. Mack
Josephine C. Mandeville
Margaret L. Martin '57
Thomas A. Monk, III
Estate of Mary Murtha '31

Joanne L. Mussleman
Mr. & Mrs. G. B. Myers
Dr. Victor N. Nanagas, Jr. &
Dr. Maria Teresita Cruz Nanagas
Preston Naylor
Mr. & Mrs. Raymond J. Pucko
Mr. & Mrs. Todd A. Pucko
Mr. & Mrs. Bhimavarapu K. Reddy
Mr. & Mrs. David E. Schaeffer
Mr. & Mrs. Charles E. Schlager
Norma Z. Smith '40
Mr. & Mrs. Joseph J. Stallone
Metza Y. Whiteley
Dr. & Mrs. Ray A. Wilson
Dr. & Mrs. William C. Yohe

Mildred S. O'Conner '32
Marie Maxwell '32
(Classmate)

Betty L. Poletto '49
Elsie Skvir Nierle '49
(Classmate)

Theresa B. Poli
Elsie Skvir Nierle '49

Edith Pompey

Mary Catherine Cowen '57

Joseph E. Rodgers, MD, '57
(JMC Alum)
Adrienne M. Rodgers '57
(Spouse)

Mary E. Rosser '40
Abe N. Rosser (Spouse)

Dionysia M. Ruth '46
Emelia C. Hayman '46
(Classmate)

Katie Sass
Patricia S. Hoffman '74
(Daughter)

Paul C. Schroy, MD
Shirley S. Hershey '46

Lenora Schwartz '66
Allen H. Schwartz
(Spouse)

Colleen M. Scussa '57
Barbara A. Bellus '57
(Classmate)
Carol H. Gray '57
(Classmate)

Margaret Summers '41
Elaine S. Kimbel '46

Kathleen A. Tierney '49
Elsie Skvir Nierle '49
(Classmate)

Nancy K. Viereck '59
Janet Carol Mosley '59
(Classmate)

Barbara K. Vitelli '60
Madeline J. Glass '60
(Classmate)

Jane H. Ward '46
Joan G. Metzler '46
(Classmate)

True Riches

If all the world were yours to win
And all the wealth and land therein-
If coffers heaped with golden store
Would line your walls and gilt your door
If men would loudly sing your praise
And children would bedeck your ways,
You still would be a beggar lot
If honor somehow was forgot.

If you had not but daily bread,
A humble cot, a path which led
To where your friends and loved ones wait
With eager smile and open gate-
If none but friends e're hear your name,
If you are ne're to taste of fame-
But if self respect is your creed,
You are a millionaire indeed.

Anon from Poems of Faith from the Salesian Collection 1989

Janet C. Hindson Award



John Wagner, Sally Wagner, Rosemary (Ror) Giosa, RN, BSN and Mary Ann McGinley RN, PHD, Senior Vice President of Patient Services and Chief Nursing Officer



Rosemary Giosa, RN,BSN, Rae Conley, RN, MSN, Amy Edmonds, RN, BSN, Sandy Eggleston, RN, BSN, Dawn Fisher, RN, ASN, Xenia Guevara, RN BSN, Berlinda Mihaich, RN, ASN, Darlene Rosendale, RN, BSN, Kathy Tapper, RN



Nominees and Past Recipients: Anne O'Malley Delengowski, RN, Msn, AOCN, Therese McGurkin, RN, MSN, Eleanor Fitzpatrick RN, MSN and Cynthia Giordano, RN, MSN

Thomas Jefferson University Hospital, Inc., Department of Nursing

The Miss Janet C. Hindson Award recognizes individuals whose work exemplifies the caring and service to others that characterized Miss Hindson's life. The award is given to an individual who demonstrates steadfast caring for the most vulnerable in society. Steadfast caring embodies devotion to relieving suffering, respect for colleges and commitment to creating environments that enhance the physical, mental and spiritual comfort of others.

Criteria for Selection of Nominees

Evidence of the following qualities:

- a. A commitment to relieving the suffering of others.
- b. Respect for colleagues and interest in the professional growth of others.
- c. Creation of environments that support the physical, mental and spiritual comfort of others.

Nomination Process

Individuals wishing to nominate a candidate should describe in a letter the qualities of the candidate and their relevance to the Janet C. Hindson Award. Explicit examples of behavior of the nominee and the impact the nominee's behavior on the environment of care and on colleagues should be included. The letter should also contain the name, title, address and phone number of the nominee and the person nominating the candidate. The letter should be sent to:

Mary Ann McGinley, PhD, RN
Senior Vice President for Patient Care
Thomas Jefferson University Hospital, Inc.
1100 Walnut Street Suite 2210 Gibbon
Philadelphia, PA 19107

Deadline: April 1, 2006

The Janet C. Hindson Steering Committee will meet to consider candidates. Notification of the award winner and his/her sponsor takes place in April.

The award will be presented during the celebration of Nurse's Week.

The Janet C. Hindson Award Steering Committee is composed of the following

Mary Ann McGinley PhD, RN, *Senior Vice President for Patient Care*
Chair and two members of the Nurses' Week Committee
Sarah (Sally) Hindson Wagner
Two members of the Jefferson Nurses Alumni Association
Vice President for Nursing
Chair of the Nursing Leadership Group
Ms. Katie Dugery

Quotes On Janet C. Hindson Recipients

1998 Madeline Ullom MS, RN

For nearly three years as a prisoner of war in interment camps on Corregidor and Manila, Colonel Madeline Ullom, in the midst of unspeakable horror, disregarded her own suffering and administered to the needs of thousands of soldiers, sailors and marines. In make-shift operating rooms and Medical and Surgical Wards she remained faithful to the ideals of her profession and country and strove to enhance the physical, mental and spiritual well-being of her patients and colleagues. After being liberated, Madeline Ullom continued to serve her country and achieved the rank colonel in recognition of her contributions and leadership.

1999 Elizabeth Piersol RN and Margaret Summers RN

Since graduating from Jefferson's Diploma School of Nursing, in the class of 1934 and 1941 respectively, Miss Piersol and Miss Summers have served as inspirations to patients, and role models to students of nursing, medicine and other health professions. In the roles as staff nurse, head nurse and supervisor, they worked unceasingly for the well-being of patients and colleagues. They continued their work after retiring by serving as board members, officers and committee chair for the Nurses' Alumni Association. Since 1985, they have been the vital link between the Hospital, the Alumni Association and the College of Health Professions. Their lives of service represent the qualities of the Janet C. Hindson Award.

2000 Anne O'Malley Delengowski RN, MSN, AOCN, Class of 1980

An oncology nurse for 20 years, Anne will go the "extra mile" in the best interest of patients and families, even when difficult challenges and obstacles lie ahead. Anne's goal is always to promote patient comfort, for she realizes that comfort goes far beyond the relief of physical pain. She truly has been a patient advocate throughout her years at Jefferson. The staff relies on Anne in many clinical situations when terminal patients who require emotional and spiritual comfort during their last days of life look to Anne as a role model. In the most difficult and emotionally draining cases, when there is little left to say, or little left to do, Anne seems to manage a comforting word or act of kindness, if not for the patient, then for the grieving family. She is respected by all disciplines for her humanistic and realistic approach to the care of every patient, regardless of the disease, diagnosis, prognosis or social status. You will often hear Anne saying, "We treat every patient as we would want our loved ones treated". This is Anne's daily motto and through her example it has come to serve as the foundation on which we base our care.

2001 Therese McGurkin RN, MSN

"...I first met Therese ten years ago, when I was a very young, novice nurse in the Emergency Department. Therese, a kind, gentle, quiet leader whose care and compassion for her patients, her staff and her colleagues were admired by those around her, 'took me under her wing' and guided and supported my professional development. Therese was and continues to be a true role model and mentor for her colleagues and myself. She is always one of the very first people I and others contact when there is a question or concern to address, a challenge to overcome, or a project to embark upon. Her judgment is impeccable, her commitment and dedication to patients is beyond words, and her wisdom is amazing. Therese inspires and influences through her actions verses mere words, and manages to win the respect of those whom respect is difficult to earn. By demonstrating a deep sense of dedication and duty and relentless work ethic, she encourages those around her to be the best that they can be".

2002 Eleanor Fitzpatrick RN, MSN

Ellie, as she is known to all of us, is the Clinical Nurse Specialist for the SICU and ISICU. She has worked at Jefferson since 1987 and is a positive role model with a wonderful blend of highly technical experience, sensitivity and humor. Ellie has been successful in educating and motivating new nurses as well as sharing knowledge with patients, physicians and colleagues. She is frequently called upon to educate others on behalf of nursing. She teaches in the critical care and trauma courses and lectures at outside conferences. She is highly regarded by physicians, other clinical specialists and nurse managers for her compassion as well as superior knowledge and skills. She provides patient care that calms patient fears while communicating competency and skill. She is a constant patient advocate. The staff love and look up to Ellie. She has a generous spirit. Her enthusiasm for her profession is contagious and her love for nursing is obvious to all who come in contact with her.

Cynthia Giordano RN, MS

Cindy G. has been a gift to the Jefferson Community for over forty years. She is dedicated to supporting the values of the nursing profession and she lives those beliefs in her actions every working day. There is never a problem too big or too small that she is not willing to do her best to try to solve. She is an advocate for the patient in pain, the employee with a personal problem, or the colleague dealing with a managerial issue. She has been a mentor for many nurses whose aspirations include being a leader with the wisdom and sound judgment that she possesses. Her nurturing knows no boundaries, as she is willing to help any manager regardless of their division or specialty. Cindy is a living example of what it means to grow with the changing health care environment while using her wealth of knowledge as a strength. She embodies all of the qualities of an outstanding nurse, leader and person.

2003 Jacquelyn McMeekin RN, BSN

Jackie McMeekin has the utmost respect of colleagues, physicians and patients. Since her arrival as an employee in 1968, Jackie's signature "dear" is well known throughout the hospital. She listens, empathizes and always has a kind and caring response. She truly loves the profession she has chosen and so proudly represents... Her former students speak of her enthusiasm, patience and never ending thirst for knowledge.... Patients arrive in the pre-op area of 5 Gibbon Holding Area anxious, exhausted and overwhelmed by the prospect of surgery. This particular area of the operating room deals with open heart, vascular and transplant surgeries. Jackie greets patients with a smile and focuses her energies and expertise on them. No patient request goes unnoticed, no tear un-wiped and no patient leaves without feeling that they are in the best possible hands. Jackie does her job effortlessly. Jackie and Miss Hindson were cut from the same mold. She brightens up my day and makes each of us feel special in our own way and proud of the work we do as nurses."



Generosity is the essence of friendship.

Oscar Wilde

Quotes On Janet C. Hindson Recipients

2004 Nora Kramer, RN, MSN

Nora has been one of the more compassionate, caring individuals with whom I have had the opportunity to work. In addition, her leadership qualities, staff development and program developments make her an extraordinary person. Working closely with Nora, it is easy to say that she is the most deserving of the Miss Janet C. Hindson Award. In 1988 Nora began her nursing career here at Thomas Jefferson. She started as a staff nurse in the INICU and currently manages the NICU/INICU and ASU at TJUH and NICU/INICU at JHN. Altogether Nora manages 64 critical care beds and is directly responsible for over 200 employees. It is hard to believe that any one person could do all that Nora does and still maintain the standards of excellence that she does. Nora is a true believer that the little things for the patient are sometimes the most important. Nora's patience and compassion are an example for all. If you look up the word Nora in the dictionary it would say dedication. Nora's dedication is not limited to the hospital alone as she is very committed to her community. Nora currently coaches the high school girls' varsity volleyball team, and the junior varsity grade school basketball team, runs a co-ed high school volleyball league and the grade school volleyball program.

Maryanne Koval, RN, BSN

Maryanne Koval, still after 24 years of service at Jefferson Hospital, is sunshine, even on a rainy day, for the patients and families on 3 Center. She is self-assured, a leader of the pack, able to juggle every crisis, a visionary, and has the unique ability to meet the challenges of this profession. Maryanne is a true "bedside nurse" in every sense of the word. She loves to be at the patient's bedside physically and emotionally. Maryanne greets these visiting patients by name with a hug and a kiss, along with positive support and genuine interest. She knows not only the patients, but also their families and their life situations. Maryanne loves to teach, and has a broad-based knowledge that both her patients and the hospital staff rely on. She has the wonderful ability to communicate, not only with our staff, but also with physicians and other interdisciplinary groups. She leaves no stone unturned.

2005 Rosemary (Roe) Giosa, RN, BSN

Rosemary embodies the ideals that the needs of the patients and their families come first. She not only cares for them physically, but emotionally as well; never forgetting that there are human beings behind the care. She constantly goes above and beyond the required duties while providing a high level of care and compassion to her patients. To her, symptom management is the gold standard. Roe has accepted any challenge that the Department of Nursing has asked of her. She has been acting manager on numerous occasions, helped with the opening of the Bodine Infusion Center and was instrumental in the expansion of Radiation Oncology. Roe has mentored staff and students alike showing them how "to do the right thing" by always managing to provide high quality care in an extremely busy environment. Miss Hindson is smiling knowing that her mentorship didn't go to waste. Roe is carrying on the high standards that were so important to her.

Nursing Care at TJUH

Quotes taken from letters sent to Dr. Mary Ann McGinley, Senior Vice President for Patient Services and Chief Nursing Officer, at Thomas Jefferson University Hospital. The letters pertain to Nursing Care administered while they or a family member were patients.

1. I experienced a Total Knee Replacement at TJUH and wanted to compliment both you and all of your patient personnel that cared for me. I need to also mention the high quality of nursing care in the recovery room. I was also impressed with the pain management team. I was terrified prior to surgery, but can truthfully say that I had a very pleasant experience.
2. A note to express my appreciation for the care that was given to my wife, a patient on the 9th floor. The nursing service and doctors who took care of her were excellent. You should be proud of these people as again they are dedicated and caring people and a credit to Jefferson Hospital.
3. I am writing to express my deep gratitude for the stellar medical care, clear compassion and consistently thorough and topnotch treatment I received by the Jefferson Hospital for Neuroscience during my pre-op consultations, neurosurgery and hospitalization. Words do not adequately convey the high regard both my husband and myself hold the staff in. Without exception, each and every person provided an exceptionally high standard of service and deserves to be acknowledged for this. Because I am a Psychologist, I have a sense of how difficult it is to provide this level of quality care in today's medical world. A close friend who is a nurse specialist and teaches at a local university was also favorably impressed by the care I received. For the rest of my life, I will never forget the experience I had at Jefferson Hospital for Neuroscience because of the incredibly talented and dedicated staff at Jefferson.
4. Our family would like to take this opportunity to commend the staff employed on the seventh floor in the Gibbon Building. The care given to my husband during his recent stay was excellent and the staff's warmth and kindness amplified their obvious professional training.
5. I had a total knee procedure done at TJUH and was a patient on 9th Pavilion. Before surgery I was given the choice of two (2) hospitals to have this procedure performed. My daughter, having been a nurse at TJUH, told me that I better go to Philadelphia. My feeling was that the physician was the same in both places, however she stated that it wasn't about the doctor, but the care afterwards. Shortly after my discharge I developed cellulites, requiring that I be readmitted for three (3) days. For this I chose to go to the local hospital. It was at this point that I realized what my daughter had meant. The care that I received at TJUH, in my opinion, was far superior to that of which I received locally.
6. I have had the pleasure of being on 7 West recently and I want you to know what great staff you have there. Being an RN myself, I am a tough patient very observant and critical. Your CNA's on 7 West made me feel very comfortable and I feel like they were right outside my door, when I put my call light on (which was often) to assist me. I never waited for anything. Your RN's are professional and competent. I actually "slept" there was no noise to keep me up.
7. I am writing to express my appreciation for the excellent care I received as a patient at Thomas Jefferson University Hospital on the 13th Pavilion. As a patient I felt secure when the nurses responded so quickly to my need for medication or to answer questions. They even supported me with encouragement and information that helped to calm my anxieties about my surgery and recuperation. Please know how important it is to a patient that your medical staff is so well trained and professional. Once the physician has completed his work, a patient relies on the nursing staff to make the difference in how the post surgical care is managed. Thank you for upholding high standards of medical care in today's "cost cutting" environment.
8. I am writing this letter in appreciation to all your medical staff on the 13th Floor, who helped my husband pass away with the dignity and grace he so very much deserved. The nurses conducted themselves in a professional and extremely personal manner. The genuine concern they demonstrated for him made me know he was in the best of hands. Their care did not stop at the patient alone, but was extended to my entire family and myself. Whether a simple cup of coffee, a kind supporting word, or a needed hug they were there to do there best. They made an extremely difficult time for my family and me that much easier to bear. I am forever grateful to them.

Biography of Lenora Schwartz

Class of 1966

Lenora Schwartz (nee Weiner), age 59, passed away peacefully in her sleep on the morning of April 18 in her Richboro home, after an extended illness. She is already sorely missed by her close family and many dear friends. She was a loving, quiet, thoughtful, intelligent and determined person. Many people relied on her judgment and many people's lives are better for the reliance. She always displayed common sense in applying her underlying intelligence.

She fought hard to overcome many obstacles during her life. When she was nine years old, her beloved father suddenly passed away, leaving her mother devastated and destitute. They moved to a smaller cold-water row house in their South Philadelphia neighborhood. The family placed a high value on education, so she commuted daily to the Philadelphia High School for Girls - fourteen miles from her house. She benefited from a scholarship fund, which enabled her to attend this public school. During her teens she developed her lifelong yearning to help others by volunteering at the neighborhood community hospital - Albert Einstein Southern Division.

When she could not afford to go to medical school, she won a scholarship to the Diploma School of Nursing at Thomas Jefferson University. At graduation she was awarded the Jefferson Medical College Hospital Women's Board prize, for demonstrating the greatest versatility and cooperation in nursing situations. These were strengths she displayed throughout her life.

After his military duty, she married her beloved husband, Allen, and they resided in center city Philadelphia. She was involved with the Women's American Organization for Rehabilitation through Training, and became President of the Center City chapter of this charity. She was active in the Alumnae Society of her nursing school, serving as an officer and a board member. Lenora was already giving freely of her time and effort.

Lenora passed the Registered Nurse exam, worked briefly in Jefferson Hospital, and was then selected for a full



time faculty position at the Thomas Jefferson Hospital Nursing School from which she had graduated. During this period, at age 23, she suffered through the first of three different types of cancer that would attack her and require major surgery. Each time she fought back and prevailed. She also attended Temple University part time and earned her Bachelor of Science degree in Nursing Education summa cum laude, and was recognized as a President's Scholar. Lenora then earned her Master in Education degree, also at Temple University.

Family first was her unstated motto. She adoringly cared for and bestowed love on her sons, Gary and Eric. They returned her love throughout their lives, and have assisted in her care during her final illness. She helped them grow into independent thinkers and decision-makers as they matured into adulthood. They have made her proud at every moment.

Shortly after their second son arrived, she and her husband moved to Newton, Bucks County. Lenora did part time private duty nursing, then became evening shift supervisor at the new Chandler Hall Nursing Home in Newton. The family relocated to their present home in Richboro. She obtained 30 post-Master Degree college credits from several Universities. She joined the local chapter of the American Association of University Women.

Uniquely, she was a founding member of both Shir Ami Synagogue in Newtown and Ohev Shalom Synagogue in Richboro. At Shir Ami, she went on to become Treasurer, then Vice President of the Board of Directors. As Treasurer, she did all the bookkeeping at home for the synagogue's new nursery school program. She was proud to participate in selection of the present Rabbi when Shir Ami was a fledgling congregation. She also served Shir Ami as Sisterhood president, organizing and helping the Sisterhood grow in size and complexity of activities. At that time, the Sisterhood was the synagogue's strongest fund raising arm and served to introduce new members of the community to the synagogue. She participated in regional and National Federation of Temple Sisterhood organizations.

In recognition of her coursework and experience, she obtained State Education Department Certification as a School Nurse. She worked as a School Nurse briefly in the Pennsbury School District. Then, she entered the position that was the epitome of her career - as a School Nurse for twenty-two years in the Council Rock School District, largely at Richboro and Holland Junior High Schools. Her career goal, as always, was to help others - students, parents, staff and administrators.

For the past eight years, she performed both her nursing duties and served as Health Services Coordinator for the entire District. She was responsible for the nursing program, standard procedural manuals, medical supply specifications and orders, medical and dental contracts, sports physicals, compiling state reimbursement funding data, staff and substitute hiring and training - to name just a few. Only her final illness of three years tore her away from her favorite position and the people she enjoyed working with.

She prided herself in being an expert medical diagnostician, recommending prompt and correct treatment to alleviate medical problems. She dealt with both medical and mental crises with equal aplomb. She was both frank and reassuring. In every school, she had a close working relationship with the student counselors. She also maintained a continuing two-way relationship with the Pennsylvania and Bucks County Health Departments to assure that the District followed appropriate medical practice.

Lenora volunteered to receive in-depth student assistance training from several sources including the Bucks County Drug and Alcohol Council. She participated in evaluation of students as a member of the Student Assistance Team at both Richboro and Holland Junior Highs, and when necessary conducted active interventions with students and their parents. She had a particular empathy for the students and staff of the highly specialized program for autistic children conducted at Holland Junior High.

She spent tremendous amounts of time and energy organizing and coordinating the Council Rock Holiday Project programs for those less fortunate. The project involved the cooperation of: the entire District staff of school nurses who referred needy families; a bank and a library who hosted the two Angel Trees loaded with needy families' specific requests; many local volunteers; generous donors of food, food certificates, clothing and gifts; Rotary members who organized a Santa breakfast with gifts; volunteer students who packed the donated items; and local police who helped deliver packages to

families unable to pick them up. In this way, many of the community's hidden needs were met.

Lenora further encouraged charitable awareness by initiating a fund drive for the United Way of Bucks County at Richboro Junior High, using novel techniques and allowing the students to select three United Way member agencies to receive their donations. She anonymously established and funded a restricted fund for special consultants at the Jewish Family and Children's Service of Princeton, Mercer and Bucks.

Always eager to share her knowledge, she assisted nursing students from several area colleges - by volunteering to supervise their school nursing practicum experience rotations in her office. She was an alpha test sight for a new school nursing software program, and assisted other District nurses in implementing the tested program in their offices as part of a computerization effort.

She served as chair of many committees, then as president of the Certified School Nurses' Association of Bucks County, which encouraged cooperation among local school nurses and abetted nursing careers with a scholarship. She volunteered as Resolutions Chair, Department of Pupil Services of the Pennsylvania State Education Association in Harrisburg for many years. Lenora was active in the National Association of School Nurses. Her paper on the use of networking to deliver better health care won that organization's 1991 Sero Symposia Research Award. She was the first school nurse to participate in the Pennsylvania Department of Education's exchange program abroad. For a week she lived in the house of a Japanese school nurse, and learned techniques used in that country's schools.

Her grieving family survives her : husband Allen, son Gary, son Eric and his wife Lorena. She was the last surviving member of both her parents' families. Her extended family consisted of her dear friends: Adina, Barbara, Bernice, Bobbie, Bonnie, Elaine, Judi, Judy, Janet, Kathy, Karen, Linda, Mimi, Pam, Rita, Rita, Roz, Roz, Ruth, Ruthie, Sharon, Sharyn, Shirley, Susan, Valerie and their children.

In lieu of flowers, donations in Lenora's memory may be made to the Endowment Fund at VITA Educational Services in Doylestown, the Special Consultant Fund at Jewish Family and Children's Service in Princeton, the Bev Spiegler Special Education Fund at Shir Ami in Newtown, or a charity of the donor's choice.

Submitted for publication by Allen Schwartz, husband of Lenora Weiner Schwartz, Class of 1966.

News About Our Graduates

Alice C. Boehret, Class of 1942

"A Standing Ovation!"

It occurred at the Sigma Theta Tau induction dinner April 13, 2004. The year I retired from Rutgers Camden, this organization was established for the Department of Nursing. I was very pleased to have secured this honor for the Students of Nursing. The students and graduates had elected me to membership, but the only meeting I was able to attend was the Induction Dinner. It was always a pleasure to see former students and the newest members of the band of nurses. The dinner in 2003 was less than should have happened. The President had had an accident involving tripping over a grandchild and she could seem to concentrate on the protocol of the meeting. She recognized only one of the charter members who was the next president. As we filed out of the room, she ran up and gave me an orchid the committee had ordered. She had forgotten it in the excitement of talking about her accident. I did not renew membership as there was no retirement listing. In the fall of 2003, I had surgery that resulted in a colostomy. The stomalologist who came to instruct me in colostomy care was the current president of Sigma Theta Tau. I told her how hurt I had been at the meeting and

getting the orchid in the hall after the dinner. She invited me to the 2004 Dinner. A former student was to escort me and we had a fine time reminiscing. Imagine my surprise, and shock, when I saw on the program that I was to receive recognition for my twenty years of support to the organization. When I was called upon to receive the plaque I was very pleased. I thanked them and was asked if I would like to say anything, I responded that I wanted to wish the graduates a career in Nursing that had been as wonderful as mine had been. I said that on the 30th of April it would be 62 years since I graduated. The applause was thunderous. I stated that I had started in the Army Nurse Corps, then to college and then to teach in the three types of Nursing Schools. I told them that my career had been a wonderful life and again thanked them for the honor they awarded me. With that, everyone stood up clapping! For me, it has been a wonderful life, but I'm not sure it is not enough for a standing ovation. It was hard to believe, but I'm very humbled by it and most appreciative. All nurses deserve it, but few get it.

Submitted for publication by Alice C. Boehret, Class of 1942

Dorothy K. Raubenhold, Class of 1934

Sally, I have many "thank you's, for the picture and names of people I met, all were so nice. I enjoyed "A Commitment to Excellence" and the part the Jefferson Nurse played in the progress, of Nursing Education. I was at Jefferson under Clara Melville, Annie Schaffer, Night Supervisor, Adele Lewis, 6th Floor, I specialized Dr. Warren B. Davis, hare-lip-cleft-palate babies, you never left their side and Nora Shoemaker. What an education I got. Another thank you for the tour through Jefferson Hospital. I never realized how big it is now. I was so impressed and proud to be a graduate. No Wards-no Nurses Home! We did 12 hour shifts. Left the floor to go to class and come right back. Now its College life. We have come a long way and Jeff lead the way. I

remember having patients fold gauze into pads and roll into rolls. Cover package 12x6x4 with 2 muslin covers and put into autoclave for 3 days-once a day. Burn victims into tea baths. Many more treatments not used today. The care of the patient was our utmost goal. Proud to be a "Jeff Nurse"

*Permission to publish granted by Dorothy Raubenhold
The above article appeared in a Reading, PA Newspaper
written by Carole A. Simpson*



Martha Jane Hower Dumm, Class of 1906

A Juniata County-born nurse was selected as the 2005 inductee to the Juniata County Hall of Fame. Martha Jane Hower Dumm was born in Juniata County in 1874 to Francis and Mary Ort Hower. She attended school and also taught in Mount Hope, a one room school in Fermanagh Township. Dumm decided to become a nurse after her younger sister died from Tuberculosis and a niece died from drinking contaminated milk. She graduated from Jefferson Medical School in Philadelphia in 1906. She worked in Chicago and in Pittsburgh, where she was the Superintendent of the Louise Home for Orphan Children. During World War I, Dumm volunteered to active duty to nurse soldiers in Europe. She was sent to the Red Cross hospital in France, where she in charge of 700 Belgian children. However, during her vacation she fulfilled her dream and nursed wounded soldiers. At the end of the war, Queen Elizabeth of Belgium awarded Dumm a medal of "honor for her devotion to the Belgian children," according to a press release from the hall of fame committee. After World War I, she worked with Indians as a county nurse in Rosebud County, Montana. It was then when she married George H. Dumm, who fought in the Spanish-American War in 1898 and served with field artillery in the American Expeditionary Forces during World War I in France, where he received a citation and the Victory Medal with Stars. After their marriage in 1921, Dunn worked with local children and at the Washington Soldiers Home at Orting, Washington. They are buried there. George



died in 1932 and Martha Jane in 1937. "The Juniata County Hall of Fame Committee congratulates the newest inductee's family on her accomplishments," a news release states. If anyone wants to nominate someone to the Juniata County Hall of Fame, contact William Manbeck, the organization's president. The nominee must be deceased, have an association with Juniata County and have made a positive contribution to mankind. Martha Jane Hower Dumm's biography and her picture will be on display in the Juniata Country Library, along with those of previous inductees.

*The above article appeared in the Lewistown-Sentinel Newspaper in Lewistown, PA
Permission granted to publish article by Jane Mork, Editor
The above article was submitted for publication
by Dolores Moyer Knepp, Class of 1962*

*No distance of place or lapse of time can lessen the friendship
of those who are thoroughly persuaded of each other's worth.*

Robert Southey

H. Jane Black Guerin, Class of 1947

The following is an excerpt from an article titled, Nursing still a stable profession, Veterans, practicing nurses weigh changes in roles from past to present. Jane Guerin carried a wrench in the starched white apron pocket of her starched white apron pocket of her standard-issue pink dress to change oxygen tanks as a nurse in Philadelphia during World War II. Nurses then, Guerin said, learned to nurse by nursing. "My book learning wasn't so great." After a full recovery from cardiac bypass surgery 10 years ago, Guerin woke to beeps and hums of monitoring machines tracking her condition while nurses filed documents away from the bedside. "When I woke up, I couldn't believe all those machines," she said. "I must really be sick." But the number of machines wired to a patient and the severity of a patient's health are not necessarily related, Nurses today rely on machines so they can manage paper work, conduct computer-based research and still commit time for bedside advocacy and education. Guerin began working at J.C. Blair Memorial Hospital in January 1947. Though she retired in October 1987, Guerin stays current with goings-on at the hospital. "Everyone I talk to says they are really pleased with the care at J.C. Blair," she said. "The girls do a great job being understaffed. We never worked 12-hour



shifts. But we did have to ride in Ambulances with patients who were being transported. Now they use helicopters. They seldom take people any distance in ambulances anymore.

The above excerpt appeared in the Huntingd on Daily News written by Richard Magda Submitted for publication by M. Joan LeVan Keller, Class of 1958

Kathleen Marie Cimahosky Plisikin, Class of 1964

Kathleen died June 16, 2005 in St. Luke's Hospital, Bethlehem, after a long illness. She is survived by her husband of 35 years, Mark Plisikin, M.D., a radiologist. They were married June 28, 1969. She was a graduate of Pleasant Mount High School and attended Marywood University. She later received her R.N. from Jefferson School of Nursing and was

employed at Jefferson Hospital until her marriage. Kathleen loved her family, home, gardening and her dog. Her family was most thrilled with her expertise in culinary arts. Her classmates will remember her love of life and laughter, long flowing tresses and her beautiful smile.

Submitted for publication by Jeanetta Capotosto Clark, Class of 1964



Elizabeth Engle Corcory, Class of 1972

Surprise-Here I am at work on Nurses Day wearing my Jefferson Cap proudly. Yes, it was just recently starched with a light bulb. I wore the cap all day this year and last and had many interesting comments. All comments were positive. The response from patients, doctors and visitors were interesting. One doctor actually said "Oh, you are a Jeff graduate! I hope next year to see many more caps on Nurses Day. We earned them.

Submitted for publication by Elizabeth (Betsy) Engle Corcory, Class of 1972

Minerva A. Brendle Hickman, Class of 1931

Minerva passed away June 8, 2005, two weeks short of her 96th birthday. She was extremely proud of her RN diploma from Jefferson and while she did not practice nursing for many years, she always kept her license current. Over the years Mother clipped verses and poems from her Jefferson Nurses Alumni Bulletin which had special meaning to her. We chose two of them which we thought particularly appropriate to her. The two Poems are as follows.

Count your garden by the flowers that fall

Never by the leaves that fall;
Count your days by the golden hours,
Don't remember clouds at all.
Count your nights by stars,
Not shadows,
Count your life by smiles,
Not tears,
And with joy on every birthday,
Count your age by friends,
Not years.

Measure you lifetime in blessings

Not the years you have known...
Count the number of people you have touched
Add up the love you have shown
Measure your days in gladness
That you and your loved ones have shared
Tally the smiles on the faces of friends...
Total the time you have cared...
Yes, measure your lifetime in Blessings...
And you'll always remain in your prime,
For youth is the feeling you keep in your heart
Whether seven - or seventy-nine.



A Tribute to Minerva "Nettie" Hickman

Nettie Hickman will live in the hearts of the friends she made, and always be known for the kindness she gave.

Many tender moments increase our grief
Many fond recollections bring us relief
May we find comfort and peace in the thought
Of the special joys that knowing her brought
Remember that goodness and mercy never die,
They go shining in the sky.
Instead of mourning as we remember her this hour
We really should be celebrating
the blooming of a flower
But forgive us, Lord, for pining,
for wishing she were here
It's hard to give up someone we have come
to love so dear
Because you see-
She was different, she was special
Unique in a thousand ways
She was loving, she was giving
And we'll miss her all our days

Sadly Submitted by Lillian Middleton, Dedicated Caregiver at The Hickman, for 40 yrs., in West Chester. All of the above information was received from Sandra H. Lee, Minerva's daughter.

Memoirs ~ Alaska

Sept. 16, 1957 to June 30, 1958
(Mt Edgcumbe)
July 1, 1958 to July 1, 1962
(Anchorage)

North to Alaska, yes that's where I spent almost five of the happiest years of my nursing career. Never in my wildest dreams did I ever think of going to Alaska until one day in 1956, while studying for my master's degree at Boston University (B.U.), I received a letter from the Territorial Division of Nursing asking me if I would accept the position of Orthopedic Teaching Supervisor at the federal installation, "Mt. Edgcumbe," in southeast Alaska. It seems my name had been submitted to the Director of Nursing in Alaska by a supervisor I had had when I took a short orthopedic course at Columbia/Presbyterian Hospital in New York, just before I left for England. The rest is history. What did I know of Alaska? Very little. Except for information available to military personnel, I found little readily accessible, even at the Boston Public Library. I did learn that southeast Alaska was one of the rainiest spots in North America, that there were parts of Alaska that never froze due to the warm Japanese currents, and that the Native People of Alaska were the Eskimo, Indian, and Aleut. "Mt. Edgcumbe," on Japonski Island, (named after an extinct volcano on nearby Kruzof Island) was once a military base. In 1946 however, the Dept. of Interior took over the installation and thus the "Mt. Edgcumbe Medical/Educational Center for Alaska Natives" was born. It consisted primarily of a five story, 200 bed, "long term" tuberculosis/orthopedic hospital, and a boarding school, with grades 7th through 12, for some 600 Alaska Natives from all over the Territory. Access to this area, almost 4000 miles from Pennsylvania, was only by sea plane or boat. Inhabitants of the island numbered about 1700 which included patients, students, employees and their families. This was the time before any commercial airport existed on the island, or a bridge connected it with Sitka across the channel, before cruise ships and hordes of tourists visited the area on any regular basis, when cars were few and far between there, and when televisions, microwave ovens, computers, and cell phones were all still flying around somewhere in cyberspace! It was a time though, when tuberculosis (tb) was still a major health problem in all of Alaska and when the effectiveness of various anti tb drugs was still being researched in designated "chemo villages." The Salk Vaccine, declared a "safe, effective, and potent" weapon against the scourge of Poliomyelitis, was barley two years old and immunizations programs, using the



new vaccine were in their prime. This was an interesting time in medicine and especially so in Alaska, where the incidence of diseases, therapies and the availability of health care were so vastly different than any found in the lower 48 states. This all intrigued me so upon my graduation from B. U. where I majored in Rehabilitation Nursing in September 1957., I flew to Juneau and joined the staff of the Territorial Department of Health. After a few days of orientation at the Health Department Offices there, I was loaned to the federal government, assigned to the Mt. Edgcumbe Medical Center. As I flew to my new destination, an hour away, I was enthralled by the beauty of all that was passing before my eyes. All too soon the plane "landed" in the channel separating Japonski and Baranof Islands, or Mt. Edgcumbe from Sitka. I was billeted in the former Bachelor Officer's Quarters (B.O.Q.) on Japonski Island, a short walk from the hospital. This was to be my home for the next ten months. When I began my assignment at the hospital on the Orthopedic/Pediatric Unit at Edgcumbe, it soon became apparent that I had a second "home" on the island, that I belonged to a closely knit family. I knew it when I'd feel a tug at my uniform or a slight poke in the back and then turned to see some dark glistening slanted eyes looking up at me and excitedly proclaim, "I jokes!" or when I received an unexpected big hug from a little tyke and heard, "Miss Baloga, I wish I was your sister." Some fifty children to love in return, infants through to teenagers, all with a myriad of health problems. Tb of the bone especially of the spine, hips, scapulae, and yes, even of the eye, was the main culprit, but deformities due to poliomyelitis, cerebral palsy and congenital dislocation of the hips and other conditions were very much in evidence. Although the majority of children had some form of surgery and wore cumbersome braces, they were the most accepting, cooperative, and complaining patients I've ever encountered. It was nothing less than a miracle when



you consider that these children were taken away from their families, their villages, their culture, from everything they loved and knew, and transferred to an alien world. The "lucky" ones were those who had a parent or relative being treated for pulmonary tb elsewhere in the hospital, or those who had a sibling at the boarding school on the island. They at least got to visit each other once in a while. As for the parents of our hospitalized children, they were the most trusting and appreciative people on earth. Can you imagine how they must have felt handing over their children to escorts they barley knew, sending them to a hospital hundreds of miles away, never hearing how they were getting along or knowing when, or even if, they'd see them again? In order to alleviate some of their stress and fears, a major component of my job was to maintain communication with the parents. I wrote letters pre and post surgery, prior to discharge and in between too, at times, especially on birthdays, included Polaroid pictures of the children. The responses I received are among my treasures today. When I arrived at Edgcumbe there was a darling little four year old boy on the Unit who, when he was about a year and a half contracted polio and had been hospitalized ever since. Though he was in braces from his neck down to his heels, and used Canadian Crutches, he was one of the happiest little fellows and could scurry about the wards like nobody's business! Finally the surgeons were persuaded to discharge Christian, to have him know his family and to see how he and his parents could cope with his braces as well as any other problems that might



ensue. So it was that in February 1958 I was selected to escort Christian home, my first trip to the west coast. After almost two weeks of travel with stopovers in Juneau, Yakutat, Anchorage and Bethel we finally landed in Eek. That final leg of the trip was in a single engine plane equipped with skis as the landing field was the frozen snow covered river. Per usual everyone came down to unload the plane of its mail, groceries, movie reels, etc and someone carried Christian up the embankment to his home. The pilot went on his mail route but within an hour he was buzzing overhead. Before he left he told me that if the weather turned bad, he'd be back earlier than expected and to be ready when I heard the plane. While he was gone however, I did have time to take all of Christian's braces off and to show his parents how to reapply them. (Christian could do this as well as I!) I also discussed skin care and how to prevent decubiti from developing, all this done of course, with the whole village in attendance as everyone proceeded to Christian's home when we arrived. Christian's parents fortunately spoke and wrote English, and as it was the only language Christian knew, we had no language problems. Though he adjusted well at home, Christian did ask his father sometime later if he was going to stay there and on another occasion, feeling homesick, he told the village teacher he wanted to see Miss Baloga. The feeling was mutual!!! He was missed by everyone at the hospital. On May 18, 1958 the Hospital celebrated "Hospital Day" and every unit did something special to commemorate the day. Our children on the Pediatric Unit took on the roles of staff members, some of the boys strutted around in white coats with stethoscopes slung around their necks, acting the proficient surgeons. Others became brace makers, the little girls were nurses, aides and teachers, and some too young to role play, remained in their cribs and were patients. And last, but not least, there was a proud little girl dressed in white with a Jeff cap atop her head, a clone of the Orthopedic Teaching Supervisor from Pennsylvania. So here are some of the wonderful memories I have of my early years in Alaska.



Submitted for publication by Marie Louise Baloga Peters, Class of 1947

Odds & Ends

"Ensign Fitts reporting for Boat Officer duty." I sounded off as I saluted the Officer of the Deck of the USS Franklin D. Roosevelt (CVB-42). "Very Well", he responded. "Mister Jones here will be riding with you to relieve the Beach Guard. Step lively now." Down the accommodation ladder and into the boat we went. "Shove off, Coxs'n". Seas: dead calm too glassy. Sky: clear. Night: dark until rounded the carrier's stern and were greeted by a brilliant full moon rising over the harbor in Beirut, Lebanon. It was November 1952. I had taken my ship aft and outboard the Taffrail of the fifty foot motor launch used to carry the ship's liberty party to and from the Fleet landing. I turned to get a better look at my passenger and caught the glint of the naval aviator's gold wings beneath his jacket. What could a "snipe" (ship's engineer) like me possibly share with an "airdale"? "Great moon", finally came out and was quickly countered by, "Yeah, but I would much rather be strolling Pensacola Beach with my new bride". "I know what you mean," says I. "I miss my wife, too. Your wife from Pensacola." "Oh, no!", says he. "She's at the Naval Hospital there. She's a navy nurse". This, last, in a tone of un-disguised pride. "Hey so is my wife," was my encouraged response. "It sure is good to have someone at home who knows what our life is like." In the navy when two sailors meet, it is not unusual for the conversation to quickly run to a "can you top this" exchange. So then-----! "But my wife is a Jefferson Nurse," says my fly-boy friend. "And in the Profession that is something very special". The game was on! But he was so young; it was his first deployment. I knew every word was true, but he deserved a little recognition. So I just said, "OOOH" in a congratulatory way as the launched reached the landing and he proceeded upon his duties. My time to be very proud!

J.M. Fitts, CDR, USN(ret), Husband of Clara Mae Snyder Fitts since 1952. Sent for Publication by Clara Mae Snyder Fitts, Class of 1941, husband.

Good Old Days???

Somebody say something about, the good old days?" For those who prefer to linger over those "wondrous days of old" here's a job description of a bedside nurse in an American Hospital about 1880. In addition to caring for your 50 patients, each bedside nurse will follow these regulations:

1. Daily sweep and mop the floors of your ward, dust the patient's furniture and windowsills.
2. Maintain an even temperature in your ward by bringing in a scuttle of coal for the day's business.
3. Light is important to observe the patient's condition. Therefore, each day fill kerosene lamps, clean chimney's, and trim wicks. Wash the windows once a week.
4. The nurse's notes are important in aiding the physician's work. Make your pens carefully, you may whittle nibs to your individual taste.
5. Each nurse on day duty will report everyday at 7 am and leave at 8pm, except on the Sabbath on which day you will be off from 12 noon to 2 pm
6. Graduate nurses in good standing with the Director of Nurses will be given an evening off each week for courting purposes, or two evenings a week if you go regularly to church.
7. Each nurse should lay aside from each pay day a goodly sum of her earnings for her benefits during her declining years, so that she will not become a burden. For example if you earn \$30.00 a month you should set aside \$15.00.
8. Any nurse who smokes, uses liquor in any form, gets her hair done at a beauty shop, or frequents dance halls will give the Director good reason to suspect her worth, intentions and integrity.
9. The nurse who performs her labors, serves her patients and doctors faithfully and without fault for a period of five years will be given an increase by the hospital administration of five cents a day providing there are no hospital debts that are outstanding.

*From: Bright Corridors, Publication of Lutheran Hospital, Cleveland, Ohio. Vol. 8 No. 1, 1963
This Article was published in an earlier Bulletin publication.
I thought it deserved another go around, for memories. Sally*

Florence Nightingale Museum

After many years of living in London, I finally visited the Florence Nightingale Museum and it was well worth the trip. It should be viewed by every nurse. While on the subject, the Imperial War Museum in London had a superb exhibit of

"Women and War" this past year and it paid tribute to nurses and their great sacrifices and marvelous contributions to the war efforts.

Submitted for publication along with a brochure (available at the office) by Theresa Lefchick Lamberth, Class of 1962

Miss Ross's Letter of Employment 1950

July 11, 1950

Miss Ross
Nurses' Home
Jefferson Hospital

Dear Miss Ross:

I am glad to report that we will be able to employ you on the general duty staff in the operating room as of October 3.

As stated to you in our conversation, the salary for general staff nursing is \$175 per month, and deductions for maintenance are made as follows:

Room	\$15 per month
Meals	10 per month per meal
Laundry	5 per month

You may elect any of these perquisites that you desire. Regular increases in salary are given at the following rates:

\$15	at the end of the first six months
5	at the end of the first year
10	at the end of the second year

All general staff nurses are expected to accept a rotating shift. The hours of duty are 45 per week. Seven holidays are granted throughout the year, and an additional day off is given in any month in which these holidays fall. Any employee who does not miss any time during a given month is entitled to a bonus day during the following month. Fourteen days of sick leave per year are allowed. These can not be accumulated, nor can the holidays and bonus days. One calendar month of vacation is given at the end of one year of service. If you have not been in the employ of the hospital a full year on the first of June, 1/12 of the vacation period is granted for each full month of service up to the first of June. If hospitalization is necessary in case of illness, this is furnished free to all members of the nursing staff. Each employee is entitled to medications at a reduced rate in cases of illness where hospitalization is not necessary. One month of written notice is expected in case of termination of your services.

We are looking forward to having you on the staff. If for any reason you are not able to report on the date mentioned or in case you can report earlier than the tentative date, I will be glad to hear from you promptly.

Sincerely yours,

Katherine Childs

Katherine Childs, R.N.
Director School of Nursing
and Nursing Service

KC:dh

How I Got My Education

It was financially very difficult to get an education in the 1940s unless you qualified under the GI Bill. People were still recovering from the poverty of the Great Depression. There were no loans, grants, or scholarships. Only eight years before I was born, women finally got the right to vote. There were not only glass ceilings for women but glass doors. Women could work in factories, offices, be a nurse or a teacher until she became pregnant. Those were our choices. The summer between my junior and senior year in high school I worked in a Happy Jim Chewing Tobacco Factory and realized I did not want to spend the rest of my life there. My family couldn't afford college, so to escape poverty I chose to enter a diploma nursing school. The cost was \$100.00 a year. That included books, uniforms, room and board, and an education. It also included eight hours of work a day in the hospital for six days a week for fifty one weeks a year. My parents agreed to pay this but I had to repay it when I finished and got a job. And I did. I finished first in my high school class. There was no public acknowledgement of this. We were called into the principal's office one at a time and shown our rank in class. My friend, Norma, was second. Perhaps if we had been boys it would have been different. The father of my friend, Fayne, took us to Philadelphia to look at some hospitals. Our first stop was at Pennsylvania Hospital and Fayne decided that was where she wanted to go. The students wore black stockings and shoes and that did not appeal to me. We then went to Jefferson Hospital and I felt at home there. The students wore pink uniforms with white aprons and white stockings and shoes. That was the only hospital to which I applied and was accepted. Not only did I get an education in the hospital but also in the nurses' residence. There was a Jewish and an Oriental girl in my class. I had never seen an Oriental before and I didn't even know what a Jew was. There were no males. Living with girls from all walks of life was a real eye opener. There were ten girls in my room above a drug store at the corner of Tenth and Walnut Streets. A part of the hospital was later added to this site. Our class was the last to live there as it was condemned. We each had a small chest of drawers, a single bed - really more like a cot - and the footlocker we brought from home. There were two showers for sixty girls and thousands of roaches. I had never seen a roach before but they became my constant companions. This was my home for six months. My mother wrote a letter every week and enclosed three dollars in it. I had to buy my personal supplies, entertainment, cloths, gifts, transportation home, and everything else with three dollars. I suppose it was a good thing that I didn't have more money because several times I felt like leaving but didn't have the bus

fare to go home. I learned the meaning of thrift and it left such an indelible mark that I have been thrifty all my life. Even after I didn't have to be, I remained thrifty. Lifelong habits are impossible to break. After our six months probation period, I moved to the 1012 Spruce Street Nurses' Residence. Now there were only four in a room. We four were part of the ten - girl room so we were already like sisters. Four more of those ten were next door. We eight have been close friends all our lives and have gotten together yearly for many years. There is something about sharing new life and death that cements friendships. I would trust my life with any one of them. The song, "The Bluebird of Happiness" was our theme song. A Philadelphia radio station played the song frequently and we adopted it as our own. One summer, about forty years later, when we got together I gave each a Bluebird of Happiness pin that we wear to our yearly reunions. Every time the Star Spangled Banner played on the radio we would all stand up. Occasionally someone would sing it and no matter what we were doing, sleeping or awake, we all stood up. None of us had much money. I didn't need many clothes because all of my time was taken up by work, study and sleep. The work was exhausting. I got only a half hour break for a meal. During that half hour I had to get to the cafeteria, use the bathroom, wash up, eat, and get back to my station. I learned to eat fast before the days of fast food. The food left much to be desired but it was eat it or starve. I ate all my meals at the hospital. The nurses' residence was two blocks from the hospital and on my walk there I had to pass Horn and Hardart Bakery. I smelled those delicious odors on the way to eat runny eggs and that awful Philadelphia scrapple. What a way to start the day! Six weeks before I was to graduate I had to have an appendectomy. I went home to recuperate so I had to work several weeks after all my friends had gone to their new jobs. The head nurse of Star Floor asked me to come work on her floor after graduation. That floor was where the celebrities and wealthy people came for their hospitalizations. She was an exacting head nurse and it was a compliment to be asked. Instead, I went home and got engaged to my future husband. York Hospital Nursery was my first job. I got on the bus at the train station at 5:45 A.M. to get to work by 7A.M. and returned home by bus. My good friend and classmate, Charmaine Kissinger, from York got a job at the York VNA. Because the pay was better and I had to pay back my \$300.00, I applied there for a job, was accepted, and began working there in Jan. 1950. I married in April 1950 and immediately became pregnant. Morning sickness raised its angry head and made continuing to work impossible. Digging out a fecal impaction and vomiting at the same time is not a

pretty picture. I remember one day I stopped at a restaurant for lunch and got a bowl of vegetable soup. As soon as it was down I knew it was going to come up. Thankfully I was in a sheltered booth. Up it came into the bowl. It still looked fresh so I tore paper napkins into it to make sure it was not served again. In July, I resigned my job. Ned was born and three years later, Jane. In 1954 we moved into a new rancher that Kermy had built with his own hands and I soon realized that at some time I would have to return to work. I didn't want a babysitter to raise my children so after much deliberation I felt that being a school nurse would be the least disruptive to my family. I would be home when the children weren't in school. Working toward a Bachelor of Science in School Nursing was necessary to secure that position. In 1955, I enrolled in Millersville State Teachers' College and took classes in the evenings and Saturdays. In 1956 I applied for a school nurse job in the Red Lion School District, I didn't work in the district where my children went to school. I didn't think I would get the job because a local doctor was on the school board and his office nurse also applied. The morning after the school board meeting I got a call from Fayne congratulating me. I didn't know why she was congratulating me until she said there was a School Board report in the morning paper stating I got the job. I hadn't had time to read the paper with a six and three year old in the house. That is how I found out that I had the \$3,000 a year job. For many years the state mandated the raises and they were \$200 a year. I took some courses at York College and Penn State York. This was so much more convenient than traveling to Millersville. Psychology and Child Development were a requirement but since I had already taken those courses in nursing school, I was given permission to skip these



classes if I could pass the finals. I got A's in both finals. It cost \$9 a credit at that time and I needed 45 credits to get my degree in school nursing. 45 credits minus six for psychology and child development and my B.S. in School Nursing cost \$351 plus books. It took me four years and I was graduated in 1959 at age 31. It wasn't easy working full time, going to class and taking care of my family. Kermy worked evenings and Saturdays so my mother and sister kept the children at my home when I went to class. I had no household help then so after my housework was done and the family had gone to bed I would study. The nights when I got

four hours sleep, I felt lucky. A neighborhood teenager kept the children when I took summer classes. After graduation I continued taking courses until I had 15 credits beyond my bachelor's degree. After the children were grown I took many courses for my own pleasure. Learning is a journey. The older I get the more I realize how little I know. I took almost every course offered at Dallastown Adult Education: microwave cooking, finance and investing, typing, bookkeeping, computer, and aqua gym. For several years I took ceramics lessons and had my own kiln. Now I am taking creative writing which I absolutely love. This course has led to my daughter thinking I need to learn the computer, so she gave me one for Christmas and now I am taking computer lessons again. The lessons I took in computer 20 years ago are not relevant. Today I bristle when I hear young people find excuses for not getting an education or a job. Hurdles are there to be jumped and to make them stronger. Maybe they can't do what they want to do at first, it is just a stepping stone. The saying is so true - when you are handed lemons, make lemonade. Grow where you are planted.

Submitted for publication by Louise Dietz Strayer Class of 1949

Friends seem to be like aspirin: we don't really know why they make a sick person feel better, but they do.

Letty Cottin Pogrebin

U.S. Cadet Nurse Corps

Helping the War From the Home Front

During World War II, there were those who fought along the battlefronts and there were those who worked to support the soldiers in the field. Theresa L. Lewis, 77, of Olive Branch, was one of those helping the United States as a member of the U.S. Cadet Nurse Corps. "In World War II, there was a shortage of nurses, then Congress passed an Act," she said. "The main objective of it," she explained was (for nurses) to stay with the hospitals until the war was over, so the registered nurses could go to the front." Lewis was living in Allentown, PA, when her service began. She always wanted to be a nurse, and the Cadet Nurse Corps gave her that chance. "My parents wouldn't have been able to



put me through nursing training because that was during the depression," Teresa said. The Corps provided an accelerated program that graduated nurses in three years. Cadets got a uniform, a \$15 a month stipend and books. There were 74 people in her class in Philadelphia. They

worked 12 hours a day and went to classes. She spent two and a half years at Jefferson Hospital in Philadelphia. Early in the third year, the hospital posted a notice telling everyone where they were assigned. Teresa and four of her friends were sent to the Veterans Administration Hospital in Memphis for their final six months of training. "We didn't know what the south was like," she said. "We enjoyed it. I liked it so much, I came back afterwards and became a registered nurse." When the students got to Memphis, they lived in a barracks and were paid a \$30-a-month stipend. While in the South, Lewis also met her future husband, Samuel Fred Lewis Jr., of Amory, Miss. He served in the Navy from 1940 to 1946, and



was a patient at the hospital. In civilian life, he was a brakeman with Frisco Railroad. Lewis graduated and took the Pennsylvania State Boards. Fred got a three day residency in Pennsylvania so they could get married there. They tied the knot in October 1952 and moved back to Memphis. They were married for 44 years until his death in 1996. Their daughters, Karen Bobbitt and Diane Harper, moved to De Soto County. Teresa built onto Karen's house in Olive Branch, moving there in 2001. The Cadet Nurse Corps dissolved in 1948. The nurses came back (from the war) and there were plenty of nurses," Teresa said. These days, she finds she has to explain her role in the war effort. "A lot of people don't know what I'm talking about when I say Nurse Cadet," Teresa said. She became a nurse after she graduated from the program, working until 1981. After her retirement, she does volunteer work. "I'm glad I went to nurses' training when I did. If I could do it all over again I would because I always wanted to be a nurse," Teresa said. "I knew I was helping the veterans of World War II by becoming a nurse. It was a really good experience. You felt good."

The above article appeared in the Olive Branch, Miss Desoto Tribune July 7, 2004 written by Andy Ashby. Permission to print was granted by Andy Ashby and Teresa Ludrof Lewis, Class of 1947. Article was sent for publication in the Bulletin by Theresa (Terry) Lefchick Lamberth Class of 1962

WWII's Cadet Nurse Corps was Overlooked

I was saddened that the U.S. Cadet Nurse Corps was overlooked during the World War II attention last week. I served in the Cadet Nurse Corps from September 1944 to September 1947 at Jefferson Medical Hospital in Philadelphia, PA and spent my last six months of training in the Veterans Hospital in Memphis. Originally named the Victory Nurse Corps, the Cadet Nurse Corps began in 1943 and ended in 1948 after graduating 124,000 nurses. The Corps was developed by the Public Health Service to train nurses to serve with the armed forces and to replace nurses in stateside hospitals who were serving overseas during the war. More than twenty percent of the existing professional nurse work force

were serving with the troops on the front line. Cadets were expected to graduate from the accelerated program in 36 months. Technically not a part of the armed forces, the Corps was in fact the largest and youngest group of uniformed women to serve their country in the war. After I graduated, I returned to the Kennedy Veterans Hospital where I worked as a nurse for 31 years before I retired.

*Teresa L. Lewis, Olive Branch
The above letter appeared in the Memphis, Commercial Appeal June 2, 2004
Permission to print was granted by Teresa Ludrof Lewis, Class of 1947
The above Articles was sent for publication in the Bulletin by Theresa Lefchick Lamberth, Class of 1962*



*Be courteous to all, but intimate with few,
and let those few well tried before you,
give them your confidence.*

*True friendship is a plant of slow growth,
and must undergo and withstand the shocks of adversity
before it is entitled to the appellation.*

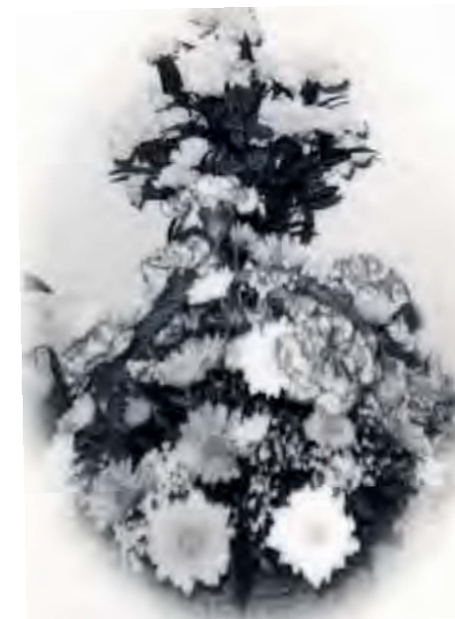
George Washington

Normandy Nightingales Weathered War's Worst

Sixty years have passed since Allied Forces landed on the beaches at Normandy, France, in a desperate effort to stop Adolf Hitler's mad quest for world domination. But Dorothy Lewis of Rehoboth Beach, Delaware, remembers the history-changing event as if it were yesterday. Lewis, now 88, led the first group of nurses ashore at Omaha Beach - the scene of some of the bloodiest fighting of Operation Overlord - just four days after the first American soldiers stormed the heavily fortified beach in the face of blistering German machine gun and mortar fire. Lewis's journey from student nurse to war hero was long and winding. She received her nursing education at Jefferson Hospital in Philadelphia and briefly worked on staff there before transferring to Duke University Hospital. She worked at Duke for six months, then returned to Philadelphia where she took a job as a private duty nurse. "After I tried to get a job as an airline hostess, then changed my mind, and in January 1941, I joined the Army," Lewis says. "I was stationed at Walter Reed Hospital in Washington, DC, first; then I was sent to Puerto Rico." Shortly after the Japanese attack on Pearl Harbor on December 7, 1941, Lewis was sent to Fort Bragg in Fayetteville, N.C., where she was made a 1st Lieutenant and joined the 45th Field Hospital Unit which was part of the U.S. Army Nurse Corps. After a brief stint in North Carolina, Lewis was sent to England where she helped set up a hospital in anticipation of the Normandy invasion. As D-Day drew near, Lewis was volunteered to be part of the first group of nurses to go ashore and treat the allied wounded. Known as the longest day by those who survived it, the Normandy invasion on June 6, 1944, left approximately 15,000 soldiers killed or wounded. The toll was massive, but the invasion helped establish an allied foothold in German-occupied France and began a non-stop offensive that less than a year later resulted in the fall of Berlin and the end of Hitler's Third Reich. "We were originally going to go in by glider," Lewis recalls of her mission. "But then they changed their minds and I'm glad they did because those gliders went down like matchboxes." Instead, Lewis (who was Dorothy Richter back then) and the 17 nurses in her charge spent four days aboard the William N. Pendleton, a U.S. Merchant Marine freighter before finally being loaded onto a landing craft and taken to the beach on June 10. "We were packed on the (landing craft) like sardines," Lewis says. "We had on so much (equipment) that we couldn't turn around or anything. And there was shelling going on. There was nothing we could do - we just took it." American soldiers met the nurses at the water's edge and yelled to them to get

down as German mortars screamed overhead. Because the women were dressed in male clothing, the soldiers who greeted them thought they were reinforcements. It was only when they saw the nurses' red lipstick that they realized the wet, bedraggled figures before them were female. Lewis and other so-called Normandy Nightingales wasted no time in getting to work. There were, she recalls, wounded service men as far as they could see, many of them were catastrophic injuries. Within twenty minutes of landing on the beach, Lewis had organized her charges into a functioning medical unit. As fighting raged behind them, the Normandy Nightingales were on their knees in the blood-soaked sand, working hard and fast to save as many soldiers as they could. How did they stay focused with so much carnage around them? "We just did it," Lewis explains. "We started treating the first injured soldiers we came across and didn't stop." Once Normandy was secured the nurses of the 45th Field Hospital Unit followed the First Army through Europe, treating the wounded of several important battles including the Battle of the Bulge, Hitler's last-ditch effort to break the Allied offensive line. Many of the wounded receiving care from Lewis and her charges, were German POWs. The nurses provided nursing care for them as they did for the allied soldiers. The Normandy Nightingales faced tremendous hazards over the course of the war but lost only one member to combat, a nurse named Frances Slanger who was killed in a mortar attack on October 21, 1944. Lewis retired from the Army in 1947 to wed Maurice Lewis, to whom she was married for almost 30 years. She worked briefly in a veteran's hospital in Martinsburg, W.Va., then left nursing to attend the family's peach and apple orchards. She never returned to nursing. Today, only four members of the Normandy Nightingales remain. In June, they met for a reunion in Washington, D.C. where they talked about old times and commemorated those who were no longer with them. Dorothy Lewis still has a few mementos of her military service, including a photograph of her and Frances Slanger scrambling off the landing craft at Omaha Beach. Far more significant, however, is the recognition bestowed upon her by the United States Army - a Bronze Star for bravery. "It's something I'm very proud of," Lewis says.

The above article, written by Don Vaughn, appeared in Nursing Spectrum September 7, 2004 and was sent for publication in the Bulletin by Norma Ziegler, with Class of 1940. Nursing Spectrum Nurse Wire (www.nursingspectrum.com). All rights reserved. Used with permission.



Luncheon Photos



2004 Luncheon Attendees

Class of 1933

Catherine Paine & Guests

Class of 1934

Betty Piersol & Guest

Class of 1936

Inga (Lisa) Olofson Wheat

Class of 1939

Victoria F. Malinoski
Olga D. Mitchell

Class of 1940 (65th Anniversary)

Norma Ziegler Smith
& Barbara Law (Guest)
Ellora Endicott Meyer

Class of 1942

Alice C. Boehret
& Celeste B. Price (Guest)
& John Price (Guest)
Nancy Habecker Maxwell

Class of 1943

Ruth I. Sunderland
Elaine M. Trankley
Bella Sorenson Martinez
Esther Milewski Kahn

Class of 1944

Maureen S. McCool

Class of 1945 (60th Anniversary)

Patricia Crawford
Anna Kuba
Caroline Roberts King
& Mary King Kananen (guest)
& Catherine Kananen (guest)
Marian MacFarland Galloway
Lenore Brady Strigari

Class of 1946

Geraldine Hart Rockel
Dorothy Fessler
Claire Shottin Hogue

Class of 1947

Elizabeth Prisnock
Grace Mease
Elizabeth J. Cooper
Doris Young Moore

Class of 1948

Betty L. Budrow
Kathryn Hafereyrich
Inez Cornelius Mirenda
Helen T. Currier
Bertha Destan Geary
Eleanor Fetsko Adams
Bernadine Malinoski
Betty Parsons Konjusky
Louise Swartz Lorah
Lois Patricia Zong

Class of 1949

Marjorie Ball Hoeck
Lorraine Milewski McCall
& Fran McCall (Guest)
Fay Johnson Pepperman

Class of 1950 (55th Anniversary)

Ellen Baran Stahl
Rita Krestynick Bolinsky
Emily Nash Hollenbach
Nancy D. Konstanzer
Helen Parcel Bowhall
Barbara Fisher Ackerman
June Matsuo Fujita
Rose Glaudel Mulligan
Mary Louise Foy Failla
Elinore Satterfield Lynch
J. Patricia Wasson Thomas
Ruth S. Merroth
Jane Heffelfinger Whipple
Anne Werner Breach
Jean Hohe Larkin
Eleanor Lingle Sauler
Germaine Ross Nadler
Helen Sheriff Rightor
Margaret Henry Jones
Louise Hoffman Douglas
Joan Shaver Hermann
Eleanor Larson
Donna Fleck Gearhart

Class of 1951

Nancy T. Powell
Jeanette Plasterer
Marian T. Williams

Class of 1954

Genevieve Alderfer Batton
Sally Hindson Wagner
& John Wagner (Guest)

Class of 1955 (50th Anniversary)

H. Ann Reihart Kline
Maryln R. Miller-Whyte
Dolores W. Spirt-Rayment
E. Joyce Hutzel Lewis
Esther Nancy Scott
Sydney M. Cassel
Claire Carissimi Ioannucci
Shirley Brown Blackburn
Dawn Deitman John
Gwendolyn Larimer Reese
Carol Bjork Schmidt
Patricia Costello Magley
Marianne D. Shinkevich
Marietta Jane Hancock
Shirley A. Schneider
Dolores Heckenberger
Shiela Lammie Baldauf & Guest
Adrienne Marasco Rodgers
Mildred Murray Kline
Dorothy Widney Lucas
Elizabeth Patton Ward
Georgene Strazzeri Callahan

Class of 1956

Flossie Roche
Dixie Fitzpatrick Robinson
Joanne Welsko O'Donnell
Carole Ferry Rosle
Marilyn R. Glauber

Class of 1957

Shirley Imler Johns

Class of 1958

Josephine Parazino Antolik
Muriel Joan LeVan Keller

Class of 1959

Jane Ryan Dietrich

Class of 1960 (45th Anniversary)

Eunice Brittan Yakkell
Sallie Callanen
Joan Driscoll Kelley
Judith R. Mearig
Rhoda S. Little
Carolyn Goepfert
Nancy Washburn Noe
Beverly DeTurk Wentz
Patricia Mazakas VanStrien
Patricia Houtman
Madeline Henly Glass
Anne Runyan Medsger
Judith Haas Stauffer
Beverly Young
Sandra E. Repman
Eileen Stambaugh Schmid
Georgia Noll Pontius
Loretta Dempsey
Heather Pressler

Class of 1962

Billie Ann Bradley

Class of 1963

Judith Fizzel Wood
Nancy M. Gallagher
Mary G. Schaal
Joy A. McGann
Joann R. Brosious

Class of 1964

Judy Welsko Lynn
Jeraldine Marasco Kohut

Class of 1965 (40th Anniversary)

Catherine Materio Teti
Sandra Kobdziej
Lois Russell Foxen
Karen Bayers
Eunice Friedman

Carolyn Widman Bohn
Carol Shockley Caruana
Carolyn Jones Walchak
Nancy Graham Heverly
Anita Harbison Karpetsky
Diane Skillen McCarthy
Julia Connelly Flynn
Bonnie Sandt Freeman
Margaret (Molly) Schofield
Frishmuth
Dianne Keegan Murray
Dianna Ketterer
Dorthea (Dottie) Hamilton
Elaine Jacoby
Betsy Maule Zentner
Darlene Moomau
Adrienne L. Daughenbaugh
Pamela Johnson Drzik
Nancy Schraga

Class of 1966

Bonnie Ann Crofford

Class of 1970 (35th Anniversary)

Cathy Eick Cardea
Linda Fenning Johnson
Gail A. Gallagher
Maria Gratzik Marinelli
Sue-Lin Hom Moore
Linda Burger Belis
Kathleen Kelly Ballek
Cynthia Grabowski-Howe

Class of 1972

Ann Marie DiMarcello
Menschner
Nancy Hom
Elizabeth Corcory

Class of 1974

Hope A. McCann

Class of 1975 (30th Anniversary)

Ruth Keers Eanes
Jane Mueller
Nancy (Anne Spohrer) Woods,
PhD, RN
Linda Napieralski
Terry O'Brien
Mary Reustle Eddis
Judith Phillips Dunn
Mary Howell Polk
Sherry Seward Lyons

Class of 1976

Aileen MacMillan

Class of 1979

Susan O'Donnell Hogan

Class of 1980 (25th Anniversary)

Barbara Engel Kenney
Susan Albrecht Curcio
Marianne Maxwell Ostrow
Mary Ann Ragone
Karan Scheideyg Thomas
Deborah T. Sharpe
Margaret Mullen-Fortino
Linda Nowak Herman
Kathy Gillen Leslie

Class of 1981

Tammy Magenta

Class of 1982

Terry Sylvester

States Represented

MD, CO, PA, CA, NJ, NV, DE,
VA, CT, NC, KY, TN, WA, TX,
HI, NY, ND, MA, MS, OH, IL,
WA, WY, NH, ME, MD, FL



It takes a long time to grow an old friend.

John Leonard

In Memoriam

Anna Mae Mogck Whittaker '43	Grace Wolford Eichelberger '29	Elizabeth Jones Hubbs '55
Helen Nissler Richards '39	Janet Harrington Melven '51	Monica Daniels Graham '57
Dawn Pickell Ferich '48	Pearl Williams Smith '41	Janet Hicks Arnold '40
Helen Wintermyer Ibaugh '35	Laurelle Dutton Quick '48	Betty Lundy Poletto '49
Marian E. Smith '36	Joanne Kling Farrell '59	Colleen Wedge Scussa '57
Mary Flyte Rosser '40	Elizabeth Laskowski Greenlee '50	Elizabeth Byrne Kimlin '43
Susan E. Simoneau '55	Pauline Helman Kough '33	Helen Reimer Motsay '34
Elaine P. Keiser Carroll '44	Mary Stauffer Malick '28	Lenora Weiner Schwartz '66
Nancy Urban Schwindt '54	Marie Cannon Philler '44	Carol Evans Phillips '70
Mary Crowe Murtha '31	Edna Fortner Feloni '40	Kathleen Cimahosky Pliskin '64
Mary Shelly Monk '39	Dorothy Haupt Bonsal '38	Nancy Kostenbauder Tibbens '51
Louise Angelo O'Brien '57	Joan Christman Clauss '50	Minerva A. Brendl Hickman '31
Elizabeth Taylor Davidson '34	Norma Nace Messer '55	Elaine Stong Kimbel '46
Margaret Pound Ranson '36	Jane Nickel Moyer '36	Jeanne L. Supplee '46
Helen Kopilchack '46	June Wall Kyle '45	Jean Hinebaugh Wooker '41
Mercedes Geil Weber '48	Eleanor Grysewicz Bobrowski '39	Lillian Utterbach Herrick '45
Dionysia Sweeney Ruh '46	Filomena Tirachia Doherty '27	Nancy Yocum Dodson '55
Lorraine Alice Jeitner '51	Mary Gibney '55	Mary Virginia Hersey Donahey '43
Nancy Maddams Keelins '59	Mildred Smith O'Connor '32	Doris Jean Brock Fagan '73



It Only Takes

*It only takes
One Smile
To offer welcome...
And blessed be the person
Who will share it.*

*It only takes
One Moment
To be helpful...
And blessed be the person
Who will share it.*

*It only takes
One Joy
To lift a spirit...
And blessed be the person
Who will give it.*

*It only takes
One Life
To make a difference...
And blessed be the person
Who will live it.*

Amanda Bradley

Additional Information

Pins

Graduates up to 1968 can write or call, J.E. Caldwell, Attention Nina, 215 S. Broad St., 3rd Floor, Philadelphia, PA 19107. Telephone: (215) 545-9156.

Graduates 1968-1982 can contact Joanne Gauthier, Student Affairs & Development Office, 130 S. 9th St., Suite 706 Edison Building, Philadelphia, PA 19107. Telephone: (215) 503-8189.

Identification can be obtained by directing correspondence to the Director, Student Affairs and Services, College of Health Professions, Thomas Jefferson University 130 South 9th Street, Suite 709, Philadelphia, PA 19107-5233. Telephone: (215) 503-8189.

Transcripts

All requests for transcripts must be submitted in writing to the University Office of the Registrar, Thomas Jefferson University, 1015 Walnut Street, Suite G-22, Philadelphia, PA 19107-5099. Telephone (215) 503-8734. Requests should include the name and address of the institution to which you want them sent. There is a \$5.00 fee for each transcript. Make checks payable to Thomas Jefferson University.

Class Address List

Class lists are available from the Alumni Office Coordinators. When requesting the list from the Alumni Association, please include your first name, maiden name, married name, and the year you graduated.

Please notify the Alumni Office Coordinators of any corrections, marriages, name changes, deaths, or address changes. Help us keep errors to a minimum and our files accurate. Please send correspondence to: Jefferson Nurses' Alumni Association, Thomas Jefferson University, 130 South 9th Street, Suite 724, Philadelphia, PA 19107-5233. Telephone (215) 955-8981. E-mail: nurse.alumni@mail.tju.edu

TJU Book Store - 1009 Chestnut Street, Philadelphia, PA 19107

Telephone (215) 955-7922, Fax (215) 923-1844, E-mail: www.jefferson.edu/bookstore

Commuter Services - 1009 Chestnut Street, Philadelphia, PA 19107

May pick up parking stickers with Alumni Card for certain parking garages in the vicinity.

Detach before mailing

Change of Address Form

Present Name _____ Spouses Name _____

Name when graduated _____ Year _____

Former Address _____

New Address _____

Present Phone number (Area Code) _____

E-mail _____

Present Position _____

Personal News _____

Mail to: Jefferson Nurses Alumni Association, Thomas Jefferson University

130 South 9th Street, Suite 724, Philadelphia, PA 19107-5233

Telephone (215) 955-8981

Constitution and By-Laws
of
The Nurses' Alumni Association
of
The Diploma School of Nursing

Thomas Jefferson University Hospital
Philadelphia, Pennsylvania

The original Constitution and By-Laws were adopted February 26, 1904

Revised:	January, 1956	Total Revision November, 1983,
May, 1906	January, 1960	adopted April 10, 1984
May, 1919	January, 1965	May, 1997
May, 1936	January, 1968	May, 2004
February, 1939	January, 1971	
May, 1942	January, 1973	
January, 1951	April, 1978	

Contents

Constitution

Article	Title	Page
I	Name	4
II	Object	4
III	Amendment	4

By-Laws

Article	Title	Page
I	Membership	4
II	Duties of Members	5
III	Meetings	5
IV	Dues	6
V	Voting	6
VI	Board of Directors	6
VII	Duties of the Board of Directors	7
VIII	Officers	7
IX	Duties of Officers	8
	President	
	President-Elect	
	Vice President	
	Recording Secretary	
	Treasurer	
X	Alumni Coordinator(s)	9
XI	Committees	9
	Nominating	
	Social	
	Bulletin	
	Development	
	Scholarship	
	Relief Fund	
	Other	
	Term of Office	
XII	Satellite Group	10
XIII	Scholarship Fund Benefits	10
XIV	Relief Fund Benefit	11
XV	Amendment of By-Laws	11
XVI	Order of Business	11
VVII	Fiscal Year	12
XVIII	Parliamentary Authority	12

Constitution

Article I

Name

The Association shall be known as the Nurses' Alumni Association of the Diploma School of Nursing, Thomas Jefferson University Hospital, the former College of Health Professions, the former College of Allied Health Sciences, Thomas Jefferson University.

Article II

Object

Section 1. To promote fellowship among members and to provide mutual assistance and comfort in times of illness, discouragement and misfortune.

Section 2. To promote the professional and educational advancement of the graduates of the Diploma School of Nursing, Thomas Jefferson University Hospital, the former College of Health Professions; the former College of Allied Sciences, Thomas Jefferson University; the former Jefferson Medical College Hospital School of Nursing and the White Haven School of Nursing

Article III

Amendment

This Constitution may be amended or repealed at the annual meeting by a two-thirds (2/3) vote of the members present and voting, provided notice of change has been mailed to all members at least two weeks prior to the meeting.

By-Laws

Article I

Membership

Section 1. Classes of and qualifications for membership. The membership of this Association shall be open to the graduates of the Diploma School of Nursing, Thomas Jefferson University Hospital; the former College of Health Professions; the former College of Allied Sciences, Thomas Jefferson University; the former Jefferson Medical College Hospital School of Nursing, and the White Haven School of Nursing.

There shall be two classes of Membership: Active and Life

- (a) Active Members shall be those who have paid the yearly dues by December 31 of each year.
- (b) Life Members shall be those who have been members of the Alumni Association for forty (40) years, or where extenuating circumstances exist. These members are exempt from payment of dues, but shall enjoy all the privileges of Active Members.

Members who are eligible for Life Membership will be notified by the President.

Article II

Duties of Members

Section 1. Any member knowing of the sickness or death of a member, or a member needing help or comfort, shall make it known to the Chair of the Relief Fund Committee, the President, or a member of the Board of Directors.

Section 2. It shall be the responsibility of members to report changes of address to the treasurer or Alumni Coordinator(s), and to attend meetings of the Association.

Article III

Meetings

Section 1. The annual meeting shall be held the day of the annual luncheon. The date, time and location will be included with the annual luncheon notice.

Section 2. The regular meetings shall be held the second Tuesday of every other month, from September to March inclusive. The meetings may be held at any location and time as approved by the Board of Directors.

Section 3. A special meeting of the members may be called at any time by the President, by the Board of Directors, or by a petition to the President by three members of the Association. All meetings of members may be held in any location and time as approved by the Board of Directors.

Section 4. Notice of the location and time of the annual meeting and the regular meetings shall be published in the annual Bulletin. Written or telephone notice of the location and time of all special meetings shall be mailed or delivered at least two weeks in advance of the meeting and shall specify the general nature of business to be conducted at such special meetings.

Section 5. Quorum: Three(3) officers and five(5) members shall constitute a quorum for an annual meeting. Two(2) officers and five(5) members shall constitute a quorum for the transaction of business at any regular meeting of the members.

Article IV

Dues

Section 1. The Board of Directors shall determine the amount of such dues. The annual dues shall be payable in January of each year and should be paid on or before April 1st.

Article V

Voting

Section 1. All members of the Alumni Association in attendance at the Annual Meeting shall be entitled to one (1) vote.

Section 2. The chair of the Nominating Committee, or designate, shall submit a slate of officers with biography of each candidate to be elected at the Annual Meeting.

Section 3. Officers will be elected by a voice vote at the Annual Meeting, or as determined by the Board of Directors.

Section 4. Newly elected officers shall assume office immediately after the close of the Annual Meeting and Luncheon.

Article VI

Board of Directors

Section 1. Number: The Board of Directors shall be comprised of the Officers of the Association, i.e., the President (who will cast the deciding vote in all cases of a tie, except in the election of officers), President-Elect, Vice President, Recording Secretary, Treasurer, and eight Directors. The retiring President shall also be a member of the Board of Directors with voting privileges until a new President-Elect is elected.

Section 2. Term and Election: The Directors shall be elected by the members for a term of four (4) years, or as determined by the Board of Directors. Vacancies on the Board of Directors shall be filled by action taken by the remaining members of the Board. Such election shall be for the remaining term.

Section 3. Meetings: The annual meeting of the Board of Directors for the election of officers shall be held at such location and time as the Board determines.

Regular meetings of the Board of Directors shall be at such location and time as the Board may determine. Special meetings of the Board may be called by the President or three Directors. All meetings of the Board of Directors may be held at any location and time as approved by the Board of Directors.

Section 4. Notice: Written or telephone notice of the location, time of, and general nature of the business to be conducted at, all special meetings of the Board shall be mailed or delivered at least two (2) weeks prior to the meeting.

Section 5. Quorum: Five (5) members shall constitute a quorum for a meeting of the Board of Directors.

Article VII

Duties of the Board of Directors

Section 1. The Board of Directors shall transact business of the Association in the interim between meetings.

Section 2. The Board of Directors shall investigate all charges against members.

Section 3. The Board of Directors shall recommend to the President a member to serve as Treasurer, and a member or members to serve as Alumni Coordinator(s).

Article VIII

Officers

Section 1. Officers: General Election. The Officers of this Association shall be President, President-Elect, Vice President, Recording Secretary, Treasurer, and such officers as the Board of Directors deem desirable, all of whom shall be members of the Board of Directors. With the exception of the treasurer, the same person may hold more than one office. In addition to the powers and duties set forth in these By-Laws, each officer shall have such powers and duties as are usually related to the office or as the Board may determine by resolution. All officers shall be elected for a term of four (4) years. The Treasurer shall be appointed by the President with Board approval.

Section 2. The President-Elect shall be elected in even years, the Vice President and Recording Secretary shall be elected in odd years.

Article IX

Duties of Officers

- Section 1. President:** The duties of the President shall include but not be limited to the following: arranging and presiding at all meetings of the Association and Board of Directors; appointing the Treasurer, and Alumni Coordinator(s) upon the recommendation of the Board of Directors; appointing all standing committee chairpersons and delegating to them the responsibility for choosing their committees; representing the Association at special functions; answering all official correspondence; casting the deciding vote in all cases of a tie, except in the election of officers; sending a letter of condolence to a graduate when family circumstances warrant; sending a memorial card to the family of a graduate upon learning of the death of the graduate; notifying elected officers of their election; preparing and sending Life Membership cards; and be designated to write checks or deposit money in the absence of the Treasurer, and co-sign for checks that will be for disbursement and requests for payment.
- Section 2. President-Elect:** Office of President-Elect was created April 3, 2003, by the Board of Directors. The purpose of this office will be to assume the presidency when the current President's term expires (May, 2008). The President-Elect will learn the responsibilities, history, various activities the Association has maintained since 1895 and the maintenance of the Alumni Office, duties of the Secretary, Treasurer, Chairpersons and Office Coordinator(s). The President-Elect shall be elected to a four (4) year term.
- Section 3. Vice President:** The duties of the Vice President shall be to assist the President in the performance of the President's duties in his/her absence, incapacity or death, subject to the policies and direction of the Board of Directors; sending an appropriate card to all known sick alumni members both in and out of any hospital.
- Section 4. Recording Secretary:** The duties of the Recording Secretary shall include, but not be limited to, recording the minutes of all meetings of the Association and Board of Directors.
- Section 5. Treasurer:** The Treasurer shall be appointed by the President upon the recommendation of the Board of Directors. The duties of the treasurer shall include, but not be limited to the following: collecting all dues; maintaining charge of all funds as designated by the Association; keeping accurate accounts of all monies received and expended; preserving the vouchers for the same; pay all bills of the Association; presenting a written record of such receipts and expenditures at each regular and annual meeting of the Association; writing checks and depositing money; preparing an estimated yearly budget for the Association; with the President, shall co-sign checks for disbursement and requests for payment. Follow up and keep track of all finances through the financial reports generated by the Finance Department at Thomas Jefferson University Hospital and Thomas Jefferson University for the Association.
- The Treasurer shall be bonded and shall receive a salary as recommended by the Board of Directors.

Article X

Alumni Coordinator(s)

- Section 1.** The Alumni Coordinator(s) shall be appointed by the President upon the recommendation of the Board of Directors. The duties of the Alumni Coordinator(s) shall be to oversee the Alumni Office, keeping all records current, notifying the President of deaths, Life Members and other business that comes to the office, handling correspondence and direct to appropriate Alumni Officer as indicated, and other tasks as indicated by the President or requested by Officers or Chairpersons of the Alumni Association.. The salary of the Alumni Coordinator(s) shall be determined by the Board of Directors.

Article XI

Committees

- Section 1. Executive Committee:** The Board of Directors, by the resolution adopted by a majority of the Directors in Office, may designate and appoint an Executive Committee which, to the extent provided in said resolution, shall have and exercise the authority of the Board of Directors between meetings of the Board.
- Section 2. Standing Committees:** The committees described in Section 3 through 8 of this article shall be the standing committees of the Association. The Chairperson of each standing committee shall be empowered to select members, shall keep a record of meetings, shall present a report at regular and annual meetings and a written report for the Annual Bulletin.
- Section 3. Nominating Committee:** The Nominating Committee shall prepare a slate of names of members who have consented to serve if elected, for each office to be filled and obtain a biography of each candidate. The slate of members who will serve as officers shall be presented at the March meeting.
- Section 4. Social Committee:** The Social Committee shall be responsible for all social functions of the Association.
- Section 5. Bulletin Committee:** The Bulletin Committee shall edit the annual issue of the Bulletin that will be mailed to all graduates of the School of Nursing, Diploma Program, and the White Haven School of Nursing.
- Section 6. Development Committee:** The Development Committee shall be responsible for all the arrangements necessary for the raising of funds for the Association.
- Section 7. Scholarship Committee:** The Scholarship Committee shall determine the procedures for granting the Clara Melville-Adele Lewis Scholarship, receive and review all applications for such scholarships and determine the amounts of the scholarship awards to be made. Whenever possible the Chairperson of the Scholarship Committee shall be a member of the former faculty of the School of Nursing, Diploma Program.
- Section 8. Relief Fund Committee:** The Relief Fund Committee shall determine the procedures for granting benefits, receive, review requests for benefits and determine the amounts of such benefits to be given from the Relief Fund Trust. The Treasurer of the Alumni Association shall be a member of the Relief Fund Committee.
- Section 9. Other Committees:** There shall be such additional committees as the President, with the consent of the Board of Directors, may create. The President shall appoint the Chairperson of any such committee, who in turn shall appoint the members.
- Section 10. Term of Office:** Each Committee Chairperson and member shall serve for a four (4) year term. The President may reappoint a Committee Chairperson and the Committee may reappoint a member.

Article XII

Satellite Group

- Section 1.** The purpose of the Satellite Group is to stimulate active involvement and interest in the administration of the Alumni Association.
- Section 2.** To promote fellowship among members of the Association who live outside the Philadelphia area.
- Section 3.** The leader of each Satellite group will be known as the Satellite Coordinator.
- Section 4.** The Satellite Coordinator or their representative will be an adjunct member of the Board of Directors of the Alumni Association.

Article XIII

Scholarship Fund Benefits

Section 1. Any graduate of the Diploma School of Nursing and the White Haven School of Nursing shall be given consideration for a scholarship upon application to the Scholarship Fund Committee. Members of the Association shall be given first consideration.

Section 2. Any son/daughter, grandson/granddaughter, of a graduate of the Diploma School of Nursing and White Haven School of Nursing shall be given consideration for a scholarship upon application to the Scholarship Fund Committee. Qualifications for consideration are to apply for a degree in Nursing at Thomas Jefferson University College of Health Professions.

Article XIV

Relief Fund Benefits

Section 1. Any graduate of the Diploma School of Nursing and the White Haven School of Nursing shall be given consideration for benefits from the Relief Fund Trust to help meet expenses incurred due to acute illness, chronic illness, or expenses for other necessities.

Article XV

Amendment of By-Law

Section 1. These By-Laws may be amended or repealed at an annual meeting by a two-thirds (2/3) vote of the members present and voting, provided notice of the change has been mailed to all members at least two weeks prior to the meeting.

Article XVI

Order of Business

The Order of Business at any regular meeting, including the Board shall be:

Call to Order	Reading of Minutes
Report of Treasurer	Report of Officers
Report of Standing Committees	Report of Special Committees
Unfinished Business	Communications
New Business	Report of Election of Officers (Annual Meeting)
Adjournment	

This order of business may be suspended at any meeting by a two-thirds (2/3) vote.

Article XVII

Fiscal Year

The fiscal year of the Association shall be July 1st to June 30th.

Article XVIII

Parliamentary Authority

The rules of Parliamentary Procedure stated in "Roberts Rules of Order" shall be the authority for all meetings of this Association and of the Board of Directors, subject to special rules that at any time may be adopted.

Application For Nurses Scholarship Fund Application

The Clara Melville-Adele Lewis Scholarship Fund
of the Alumni Association of the
School of Nursing (Diploma Program)
College of Health Professions
Thomas Jefferson University
(215) 955-8981

- Name: _____
(Last Name) (First Name) (Middle Initial) (Maiden Name)
- Address: _____
(Number and Street) (City and State) (Zip Code)
- Year of Graduation: _____ Social Security #: _____ Telephone #: _____
- Include a letter of acceptance from the University or College you plan to attend.
- Positions held. Arrange in sequence, listing present or last position first.
Title of Position Name of Employer Address Dates of Employment

- Current memberships: Alumni Association ANA NLN Other _____
- List your activities in professional organizations.

- Proposed program of study and plans for your professional career:
School enrolled in _____
Address of School _____
Tuition cost Total _____ Per credit _____
Additional expenses Books _____ Fees _____ Other _____
- Available financial assistance (amounts)
Scholarships _____ Loans _____ Work reimbursement _____
- Have you received scholarship money from the Alumni in the past? _____ If yes, amount _____ Dates _____
- Number of credits this semester _____
- Upon completion of course work, we require that you send proof of your passing grade to the Alumni Office.

Signature _____ Date _____
(for additional space, use back of this form).

Revised June 1999
March 1998
June 1994
November 1987
March 1984
October 1976

Eligibility for Nurses Scholarship Fund

Purpose

To assist members of the Alumni Association in the preparation for a degree in nursing.

General Requirements

Membership in the Alumni Association (preferred).

At least one year of professional experience as a registered nurse.

Enrollment full-time or part-time in an accredited program, leading to a baccalaureate or higher degree in nursing.

Letter of acceptance from the University or College you plan to attend.

A close relative (daughter, son, granddaughter/son) of a graduate of the Diploma Program planning to attend Jefferson's Nursing Program could be eligible to receive a scholarship, provided all requirements are met.

Awards

All things being equal, preference will be given to those who have most nearly completed degree requirements.

An application for Scholarship Funds is required for each semester.

Application Procedure

Applications are available from the Nurses Alumni Office or the the Chairperson, Scholarship Committee:

School of Nursing Alumni Association
Thomas Jefferson University
130 South 9th Street, Suite 702
Philadelphia, PA 19107-5233.
Telephone (215) 955-8981

Submit all applications at least forty five (45) days prior to the regularly scheduled meetings of the Alumni Association (second Tuesday of September, November, January, March and the annual meeting in May).

Include the name and address of the person or school to whom the scholarship check is to be sent.

Each application is given careful consideration and considered on a first come, first served basis.

Revised June 1999
March 1998
June 1994
November 1987
March 1984
Spring 1982
Spring 1978
Fall 1977
Fall 1976

Application For Certification

The Clara Melville-Adele Lewis Scholarship Fund
of the Alumni Association of the
School of Nursing (Diploma Program)
College of Health Professions
Thomas Jefferson University
215-955-8981

1. Name: _____
(Last Name) (First Name) (Middle Initial) (Maiden Name)
2. Address: _____
(Number and Street) (City and State) (Zip Code)
3. Year of Graduation: _____ Social Security #: _____ Telephone #: _____
4. I applied and have been accepted to sit for Certification Re-certification Examination in the following specialty:
Name _____ Date _____
5. Costs Incurred: _____
Examination Fee: _____
6. Financial assistance available to you : (state amount)
Work reimbursement: _____ Other: _____
7. To receive financial assistance with Certification costs, send a copy of one of the following to the nurses Alumni Office :
 1. Canceled check
 2. Receipt of payment
 3. Your passing grade
8. Are you a member of the Alumni Association? Yes No
9. Plans for your future professional career:

Signature _____ Date _____

Qualifications on reverse side.

June 1999
September 1997

Eligibility for Certification

Purpose

To assist members of the Alumni Association to meet the costs of certification in a nursing speciality.

Requirements

Alumni of the Diploma Nursing Program of Thomas Jefferson University.

Membership in the Alumni Association preferred.

At least two years' experience in the nursing speciality requested.

Application and acceptance by organization offering certification examination.

Awards

Monies will be granted to applicants who meet the requirements.

Application Procedure

Applications are available from the Nurses Alumni Office or Chairperson, Scholarship Committee, School of Nursing

Alumni Association
Thomas Jefferson University
130 South 9th Street, Suite 702
Philadelphia, PA 19107
Telephone (215) 955-8981

Submit Applications at least four (4) weeks prior to the regularly scheduled meeting of the Alumni Association (second Tuesday of September, November, January, March and the annual meeting in May.)

Each application is given careful consideration and considered on a first come, first served basis.

June 1999
September 1997

Application For Relief Fund Benefits

Nurses Alumni Association
School of Nursing
College of Health Professions
Thomas Jefferson University
(215) 955-8981

Applicant Data

Name: _____
(Last Name) (First Name) (Middle Initial) (Maiden Name)

Address: _____
(Number and Street) (City and State) (Zip Code)

Year of Graduation: _____ Social Security #: _____ Telephone #: _____

Type of Membership Life Active Have you received Alumni Benefits before No Yes, Date _____

List your specific needs _____

Include the reason for this specific request _____

Signature _____ Date _____

Applicant or Representative _____

Relationship to Applicant _____
(Number and Street) (City and State) (Zip Code)

Attending Physician Statement

Patient's Name _____

Diagnosis (If injury, give date of accident) _____

Date first consulted for this illness _____ Length of illness _____

If patient hospitalized: name of hospital _____ Dates _____

If patient in nursing home or extended care facility:

Name of Facility _____

Address of Facility _____

Physician's Signature _____ Degree _____

Address: _____
(Number and Street) (City and State) (Zip Code)

Authorization

I hereby authorize the above named physician to release any and all information requested by the Jefferson's Nurses Alumni Association with respect to this claim for Relief Fund Benefits.

Signature _____ Date _____
(Applicant or Representative)

Relationship to Applicant _____

Important: Read Reverse Side of this Form

Rev. 5/88

Eligibility for Relief Fund Benefits

Membership in the Association for one year preferred. However all requests will be given consideration. All things being equal, members will be given first consideration.

The Following Are Entirely Excluded

1. Pregnancy and its complications.
2. Cosmetic Surgery
3. Dental surgery and/or complications.


How to Apply for Relief Fund Benefits

1. Complete your part (the top portion) of the Benefit Form and sign the authorization at the bottom.
2. Have your physician complete his or her part of the Benefit Form.
3. If the Alumni member cannot complete the Benefit Form, the person submitting the form must show his or her relationship to the member when signing and give address and telephone number.
4. The complete Benefit Form should be sent to:

Chairman, Relief Trust Fund Committee
Jefferson Nurses Alumni Association
Thomas Jefferson University
130 South 9th Street, Suite 702
Philadelphia, PA 19107-5233
Telephone (215) 955-8981

All information is confidential.

All Relief Fund requests will be considered by the Board of Directors of the Nurses Alumni Association for the amount of monies granted.



My Dilemma

Mirror, mirror, on the wall
You're no good to me at all!
When I look into your space
And see the reflection of my face
Is that the person that I see
Is that person really me?

Sure, I know its been awhile
Since I was called a juvenile,
But I really feel the same

'Cept I'm stiff and a little lame.
Hair's turned gray, getting thin,
Lots of wrinkles and a double chin.

But I'm really fine,
Work at something all the time.
Still I wonder when I see
That reflection that is me,
Which one of us is really real,
The one I see or the one I feel?

Gertrude Young, age 96

Hotels

Park Hyatt Philadelphia at The Bellevue Hotel
Broad & Walnut Streets, 19102
(215) 893-1234

Center City Hotel
501 North 22nd Street, 19130
(215) 568-8300

Doubletree Hotel Philadelphia
Broad at Locust Street, 19107
(215) 893-1600

Embassy Suites Center City Philadelphia
1776 Benjamin Franklin Parkway, 19103
(215) 561-1776

Four Seasons Hotel
One Logan Square, 19103
(215) 963-1500

Holiday Inn Express Midtown
1305 Walnut Street, 19107
(215) 735-9300

Crowne Plaza Philadelphia Center City
1800 Market Street, 19103
(215) 561-7500

The Latham Hotel
135 South 17th Street, 19103
(215) 563-7474

Philadelphia Marriott
1201 Market Street, 19107
(215) 625-2900

The Warwick Philadelphia
1701 Locust Street, 19103-6179
(215) 790-7755

Franklin Wyndham Plaza Hotel
17th and Race Streets, 19103
(215) 448-2000

Comfort Inn Penn's Landing
100 N. Christopher Columbus Blvd., 19106
(215) 627-7900

Holiday Inn - Independence Mall
4th & Arch Streets, 19106
(215) 923-8660

Omni Hotel at Independence Mall
4th & Chestnut Streets, 19106
(215) 925-0000

Penn's View Hotel
14 North Front Street, 19106-9215
(215) 922-7600

Sheratin Society Hill
1 Dock Street, 19106
(215) 238-6000

Abigail Corby Bed & Breakfast
Rittenhouse Square, 19103
(215) 735-1881

The Barclay Hotel - Rittenhouse Square
237 South 18th Street, 19103
(215) 545-0300

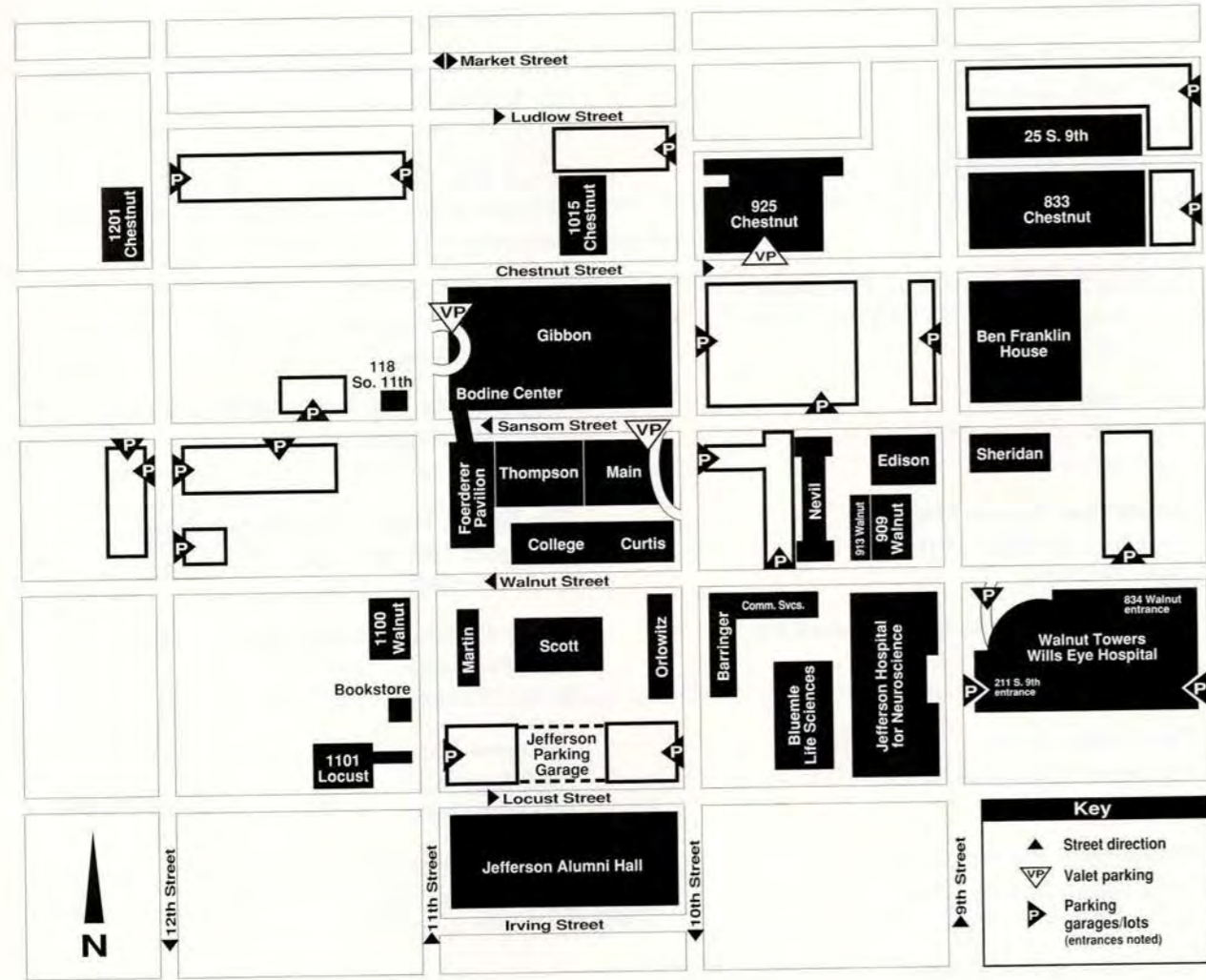
Bed & Breakfast Center City
1804 Pine Street, 19103
(215) 735-1137

Hampton Inn
1300 Race Street, 19107
(215) 238-1046

Martin/Alternate Housing
11th & Walnut Streets, 19107
(215) 955-6479

When you call for a reservation, mention you are affiliated with Thomas Jefferson University and ask if Jefferson rates are available (have your Jefferson Alumni Identification available).

Campus Map



Notes

** Meetings * Annual Luncheon **

Regular Meetings Dates

Tuesday, September 13, 2005, 11:00 am
Tuesday, November 8, 2005, 11:00 am
Tuesday, January 10, 2006, 11:00 am
Tuesday, March 14, 2006, 11:00 am
Tuesday, September 12, 2006, 11:00 am

The above meetings are held in the Edison Building, Room 1229
130 South 9th Street, Philadelphia, PA 19107

Annual Meeting

Saturday, May 6, 2006, 10:30 am
Solis – Cohen Auditorium, Jeff Alumni Hall
1020 Locust Street, Philadelphia, PA 19107

Annual Luncheon

Saturday, May 6, 2006
Social Hour 11:30 am
Luncheon 12:30 pm
Jefferson Alumni Hall, 1020 Locust Street
Philadelphia, PA 19107

Nurses Alumni Office
130 South 9th Street, Suite 724, Philadelphia, PA 19107
Phone: 215-955-8981
E-Mail: nurse.alumni@mail.tju.edu

Jefferson Nurses Alumni Association
Thomas Jefferson University Hospital
130 South 9th Street, Suite 724
Philadelphia, PA 19107-5233
(215) 955-8981

