

Fall 1998

Nurses Alumni Association Bulletin, Fall 1998

Betty Piersol

Elizabeth K. Prisnock

Marian E. Smith

Margaret Summers

Follow this and additional works at: https://jdc.jefferson.edu/nursing_alumni_bulletin

 Part of the [Nursing Commons](#)

[Let us know how access to this document benefits you](#)

Recommended Citation

Piersol, Betty; Prisnock, Elizabeth K.; Smith, Marian E.; and Summers, Margaret, "Nurses Alumni Association Bulletin, Fall 1998" (1998). *Nursing Alumni Bulletins*. Paper 64.

https://jdc.jefferson.edu/nursing_alumni_bulletin/64

This Article is brought to you for free and open access by the Jefferson Digital Commons. The Jefferson Digital Commons is a service of Thomas Jefferson University's [Center for Teaching and Learning \(CTL\)](#). The Commons is a showcase for Jefferson books and journals, peer-reviewed scholarly publications, unique historical collections from the University archives, and teaching tools. The Jefferson Digital Commons allows researchers and interested readers anywhere in the world to learn about and keep up to date with Jefferson scholarship. This article has been accepted for inclusion in Nursing Alumni Bulletins by an authorized administrator of the Jefferson Digital Commons. For more information, please contact: JeffersonDigitalCommons@jefferson.edu.



*Nurses
Alumni Association
Bulletin*

School of Nursing
College of Health Professions
Thomas Jefferson University
1895 – 1998

Fall 1998

*Jefferson Nurses Alumni Association
Philadelphia, PA*

Dear Alumni,

Regular meetings of the Alumni Association will be held on the following dates:

September 8, 1998 March 9, 1999
November 10, 1998 May 1, 1999 (Annual Meeting)
January 12, 1999

The September, November, January and March Meetings will be held in Room 719, Edison Building, 130 South 9th Street, Philadelphia, at 5:00 PM.

Annual meeting will be held in Solis-Cohen Auditorium, Jeff Hall, 1020 Locust Street, Philadelphia, PA at 10:00 AM.

This is the only notice you will receive.

Elizabeth Greenlee, Treasurer

Notice
Annual Luncheon & Meeting Dates
May 1, 1999

Social Hour: 11:30 A.M.
Luncheon: 12:30 P.M.
Jefferson Alumni Hall
1020 Locust Street
Philadelphia, PA 19107
Annual Meeting: 10:00 A.M.
Solis-Cohen Auditorium
Jefferson Alumni Hall

Jefferson Nurses
Alumni Association
130 South 9th Street
Suite 702
Philadelphia, PA 19107-5233
(215) 955-8981

Fall Social
November 14, 1998 • 12:30 P.M. - 5:00 P.M.
Faculty Club • Jefferson Alumni Hall

Alumni Association of the School of Nursing
College of Health Professions
Thomas Jefferson University

TABLE OF CONTENTS

	Page
1998-1999 Meeting Date Calendar	Inside Front & Back Cover
1999 Annual Luncheon & Meeting Notice	Inside Front & Back Cover
Fall Social	Inside Front & Back Cover
Officers and Committee Chairs	2
Bulletin Publication Committee	2
The President's Message	3
Treasurer's Report	4
News About Our Graduates	6
Highlight Of 1998	7
Operation Smile	8
Scholarship Funds At Work	10
Romania Trip	12
Double Honors	14
Doris Bowman	16
Memorial Service For Janet Hindson "A time for everything"	17
On the Lighter Side	18
Twenty Ways to Kill an Organization	21
Happy Birthday	22
Fiftieth Anniversary	25
Resumé Alumni Association Meetings	28
Alumni Office News	31
Committee Reports	
Bulletin	33
By-Laws	33
Relief Fund	33
Social	34
Scholarship	34
Development	35
Nominating	41
Luncheon Photos	42
In Memoriam, Names of Deceased Graduates	44
Class News	45
Certification Reimbursement Application	75
Relief Fund Application	77
Scholarship Fund Application (new)	79
Pins, Transcripts, Class Address List, Change of Address Forms	81
Campus Map	82

Officer's for 1998-1999

President
SARAH HINDSON WAGNER, '54

Vice President
VERA PAOLETTI, '69

Recording Secretary
NANCY THOMPSON POWELL, '51

Treasurer
ELIZABETH LASKOWSKI GREENLEE, '50

President ex officio
ALICE C. BOEHRET, '42

Board of Directors
JANE RYAN DIETRICH, '59
JEANNE KANE, '68
NANCY DUNKLE KONSTANZER, '50
PAULA LEVINE, '68
LORRAINE MILEWSKI McCALL, '49
JEANETTE PLASTERER, '51
CAROLE FERRY ROSLE, '56
MARY SCHAAL, '63

Alumni Office Coordinators
BETTY PERSOL, '34
MARGARET SUMMERS, '41

COMMITTEE CHAIRS

By-Laws
MARGARET SUMMERS, '41

Bulletin
MARGARET SUMMERS, '41

Development
BETTY PERSOL, '34

Nominating
VERA PAOLETTI, '69

Relief Fund
LORRAINE MILEWSKI McCALL, '49

Satellite
JANE RYAN DIETRICH, '59

*Scholarship
co-chairs*
CAROLE FERRY ROSLE, '56
FLORENCE ROCHE, '56

Social
PAULA LEVINE, '68

The Bulletin Publication Committee 1998

BETTY PERSOL, '34
ELIZABETH K. PRISNOCK, '47
MARIAN E. SMITH, '36
MARGARET SUMMERS, '41, Chair

The Bulletin is published annually by

Jefferson Nurses Alumni Association
Thomas Jefferson University
130 South 9th Street, Suite 702
Philadelphia, PA 19107-5233

Notice Annual Luncheon & Meeting Date May 1, 1999

Social Hour: 11:30 A.M.
Luncheon: 12:30 P.M.

Jefferson Alumni Hall
1020 Locust Street
Philadelphia, PA 19107

Annual Meeting: 10:00 A.M.
Solis-Cohen Auditorium
Jefferson Alumni Hall

The President's Message

Greetings Fellow Alumni,



Although this past year has been busy with Alumni Association responsibilities, I did have time to pause and reflect on what the association has accomplished, the goals we would like to achieve in the future and the paths we need to take in order to achieve these goals. If you have any suggestions or concerns that could direct your officers and Board of Directors, please let us know. Your help will be greatly appreciated.

I would like to mention the passing away of two members, Doris Bowman, '42 and my sister, Janet Hindson, '50, who served our association with unselfish devotion as officers, board of directors and committee chairpersons. Their guidance and presence will be greatly missed.

I look forward to hearing from you and to visit with you at our annual luncheon.

Sincerely,

Sally Hindson Wagner, '54

Giving and Receiving

Take the "sun" out of sunshine,
Put it in a sunny smile.
It will cheer a lonely person
And make living more worthwhile.

Take a hand that needs a helping,
Lead it on a happier road.
It will ease those heavy burdens
By sharing half the load.

Take your heart that's filled with love,
Gladly give it all away.
It will overflow to others
And keep rushing back each day.

Take the time to speak to neighbors,
A "hello" to show you care.
You may need a cup of sugar,
For you no cupboard will be bare.

Kathryn Wiesenhoefer

Treasurer's Financial Report

January 1, 1997 to December 31, 1997
General Fund

Fund Balance		\$21,700.70
INCOME		
Dues	\$10,250.00	
Annual Giving	21,971.00	
Diploma School of Nursing Alumni Association- Mabel C. Prevost Scholarship Fund	8,260.00	
Elizabeth C. Ent Memorial Fund	690.00	
Relief Fund Reimbursement		
Birthday Flowers & Christmas Checks	7,842.95	
Luncheon	3,793.00	
Fall Social	431.39	
Miscellaneous		
Tote bags, Pictures, Class lists, etc.	340.00	
		<u>53,578.34</u>
TOTAL		\$75,279.04
DISBURSEMENTS		
Bulletin	11,831.00	
Birthday Flowers	4,597.38	
Salaries and Payroll Taxes	8,672.15	
Professional Fees (Auditor)	925.00	
Contributions	850.00	
Satellite Groups (Reimbursements)	513.49	
Office Supplies & Postage	1,644.51	
Luncheon	6,345.19	
Diploma School of Nursing Alumni Association- Mabel C. Prevost Scholarship Fund (1996)	8,295.00	
Nylon Tote Bags	1,203.38	
Christmas Checks (to Shut-Ins)	2,200.00	
Miscellaneous	40.00	
		<u>47,117.61</u>
TOTAL		
Fund Balance December 31, 1997		\$28,161.43

Elizabeth Greenlee
Treasurer

Financial Report

Brouse Litz & Associates
A Professional Corporation

Alumni Association of the School of Nursing
Thomas Jefferson University
Statement of Assets and Fund Balance
December 31, 1997

ASSETS	
Cash - General Fund	\$ 20,092
Endowment Funds:	
Relief Fund	\$1,392,027
Scholarship Fund #3130	292,596
Marguerite G. Barnett Memorial Student Loan Fund #3776	116,129
Educational Fund #3960	55,930
Diploma School of Nursing Alumni Association- Mabel C. Prevost Scholarship Fund #4135	<u>132,971</u>
	1,989,653
Other Equipment	<u>2,518</u>
TOTAL ASSETS	FUND BALANCE
	\$2,012,263
Fund Balance	\$2,012,263

Please Note: Cash - General Fund, is the only fund we can use for the expenses of running the Alumni Association. The endowment Funds are all restricted funds and can only be used for the purpose for which they were established.

Elizabeth Greenlee
Treasurer

News About Our Graduates

Kitty Smulling Gair, 1934 Jeff Graduate, has had a very interesting life. Kitty became a public health nurse and moved to Alaska. Tuberculosis was the most urgent health problem in the vast territory of Alaska.

Congress made available surplus World War II ships to be used as hospital ships in Alaska and also provided the personnel to man this mobile health service. Kitty served on the ship MV Hygiene.

The primary purpose of the MV Hygiene was to screen the entire coastal population for tuberculosis. Kitty met her future husband, Angus "Gus" Gair while working on the MV Hygiene. They were married in 1948. Both remained working on the ship until it went out of service.

Kitty earned an MA degree in child psychiatric nursing at Boston University, then worked in the Juneau school system until she retired in 1971. She was active in the Alaska Nurses Association, she edited the Alaska Nurse and served on many boards and committees. Gus died in 1977, Kitty now lives in Wasilla, Alaska near her son and grandson.

"Alaska Search for a Killer" a Seafaring Medical Adventure from 1946 to 1948 written by Susan Meredith with Kitty Gair and Elaine Schwinge, published by Alaska Public Health Nursing History Association. The book is very interesting and well worth reading.

Victoria F. Malinowski, 1939 Jeff Graduate. After retirement from the Commissioned Corps of the U.S. Public Health Service in 1968, Victoria was employed for ten years by the Maryland State Health Department as a nurse - consultant in Home Health Care.

On September 8, 1997, the Maryland Association of Home Care at their annual meeting in Ocean City, Maryland, honored Victoria as their founder on their twenty-fifth anniversary. The mayor of Ocean City presented her with a key to the city. In 1983, the association established an annual Malinowski Award for excellence in home care.

Rose M. Kershbaumer, 1948 Jeff Graduate, in 1993 she earned her Ed.D. degree. From 1954 to 1988, the Hazleton native spent most of her time in Africa, working diligently to save lives, tend to the sick and deliver babies, and teaching Africans how to do the same. She's a Medical Mission Sister first, but she's also a registered nurse, a certified nurse-midwife and an educator. "I always wanted to go into nursing", Sister Rose said. "I received a good basic education in Hazleton. In fact, it was a top-notch education. The teachers were interested in the students. I toyed with the idea off and on of becoming a sister and in 1951 I made up my mind," she said. "I realized what my call was and spent the next three years in the formation program for Medical Mission sisters". In addition to her services in Africa, Sister Rose has added to her impressive resume by teaching or consulting in a variety of programs and institutions, including: the U.S. Peace Corps, the Rockefeller Foundation, Maria Joseph Manor in Danville, Congress of International Confederation of Midwives, Oslo, Norway, Santa Fe, New Mexico, University of Utah, Ribeirao Preto, Brazil, and numerous locations in Africa.

The above article was in Teachers College Columbia University - Today. Sister Rose attended her 50th anniversary reunion at the Nurses Annual Alumni Luncheon on May 2, 1998.

Highlights of 1998

Scholarship Fund (Jeff 2000) Reaches Goal

The Diploma School of Nursing Alumni Association-Mabel C. Prevost Scholarship Fund, also known as the Jeff 2000 Fund, was completed two years prior to the target year of 2000. This was made possible only by the wonderful cooperation of all our graduates who so generously gave to establish this fund.

What really gave this fund a big boost was the \$50,000 gift from the estate of the late Margaret Armstrong Tunnard, class of '35. However, we want you to know that every gift received was important in helping to reach our goal of \$150,000, this includes matching gifts we received each year.

The above fund has been activated and scholarships are being made available to students who greatly appreciate this help.

The President and Board of Directors of the Alumni Association wish to thank each one who participated in this fund drive. Your loyalty and support to your Alumni Association is appreciated. Thank you all very much for helping to attain our goal.

Editors note:

Diploma Nursing Alumni have always been generous donors. We appreciate all gifts, the small gifts just as much as the large ones, thank you for your interest in the Alumni Association.

If you plan to leave an outright gift to the Alumni Association in your will, word it as follows:

"I give, devise and bequeath to : The Diploma School of Nursing Alumni Association of Thomas Jefferson University of Philadelphia, Pennsylvania, the sum of _____ dollars."

Some options in addition to outright gifts of cash, ways that benefit our alumni efforts and Jefferson as well as you and your family and reflect your needs, interests and economic circumstances. Including Jefferson through trusts. Bequests in your will, pooled income funds, annuities, life insurance and securities. In addition, many of the methods can result in tax benefits. For more information, please contact the Alumni Office. We can introduce you to a member of the University's Development Office staff who will be happy to work with you and your financial advisor.

Peg Summers, Chair Bulletin Committee

Operation Smile Touches the Face of Humanity

By Sandra P. Kenton, Class of '68

It is estimated that one in 800 children is born with a facial deformity in the United States. The incidence of cleft lips, cleft palates and other facial deformities in the developing world is nearly double what it is in the U.S. No matter what country they live in, children with facial deformities suffer social humiliation and isolation, in addition to a barrage of other medical complications, including malnutrition, infection and disease.

Operation Smile exists to help these children and their families. Since 1982, more than 43,000 individuals suffering from facial deformities have benefited from the service of Operation Smile locally, nationally and internationally.

Operation Smile was founded by Dr. William P. Magee, Jr., a plastic surgeon, and his wife, Kathleen, a nurse and clinical social worker. The not-for-profit, volunteer medical services organization provides reconstructive surgery and related health care to indigent children and young adults in 16 countries and the United States. Operation Smile also provides education and training to physicians and other health care professionals so they can provide this needed care to their own citizens.

In 16 countries around the world (Brazil, China, Colombia, Ecuador, Honduras, Kenya, the Middle East, Morocco, Nicaragua, Panama, the Philippines, Romania, Russia, Thailand, Venezuela and Vietnam and in 24 regions of the United States). Operation Smile brings together health care professionals and the public and private sectors to provide voluntary care; to improve the quality of life for the children, families and communities that share in the Operation Smile experience.

The Philadelphia chapter of Operation Smile replicates the programs of the parent organization, which is based in Norfolk, VA. In 1995, the chapter's Board of Directors launched "Mission to Philadelphia," a domestic medical program that identifies children who have fallen through the cracks of the health care system in Philadelphia and its surrounding suburbs. Children are then connected with Operation Smile doctors participating facilities for free care.

"Mission to Philadelphia" relies on the team approach and is modeled after a successful program started in 1991 by the New York City chapter of Operation Smile. The program includes health care institutions, lay volunteers, volunteer physicians, nurses, and other health care professionals working in collaboration with schools and other health and human service agencies to ensure access to care. It is a community-based initiative that depends upon donations of time, talent and resources. Working together, these groups provide children with the needed access to care and treatment for facial disfigurements regardless of their ability to pay.

Area health care institutions participating with the program include Thomas Jefferson University Hospital, Temple University Health System, Pennsylvania Hospital, Hospital of the University of Pennsylvania, and St. Christopher's Hospital for Children.

Operation Smile Philadelphia relies heavily on Jefferson doctors, nurses, bio-



Augustina, a World Care Patient from the Philippines arrived with a large encephalocele on her nose.

After surgery corrected the herniated brain tissue, Augustina was able to return to school and enjoy her life.



medical technicians, administrators, medical students and other health care professionals to foster the mission of Operation Smile. The offices are located on the campus where valuable resources associated with the institution are accessible.

Many Jefferson health care professionals volunteer as team members for Operation Smile's international missions. The teams help to improve the quality of life for children, families and communities where there is a profound need for specialized medical care such as Romania, China, Vietnam, Nicaragua and Kenya. By providing free reconstructive, craniofacial and microsurgery, and education and training for local health care professionals, Operation Smile delivers quality care, assists overwhelmed health care systems and raises medical standards.

Volunteerism is crucial to the success of Operation Smile. The volunteers are as diverse as the children we help. Operation Smile could not exist without its medical volunteers, nor could it function without the efforts of non-medical volunteers.

"Touching the face of humanity" is more than a slogan for Operation Smile - it is a covenant of transforming lives. It is putting a smile on the face of a child for the very first time.



Bob and Vicki Peterson visited the Maasai Mara village with Operation Smile, October of 1996. Patient Atalina (second from the right, and her aunt Elizabeth) had corrective surgery for a cleft lip. She is now fully accepted in village society after having been outcast for many years. The Petersons were members of the 1996 and 1997 mission to Kenya. Bob, vice president of Development TJU, served as the logistics coordinator. Vicki, volunteer with the women's board of TJU, was in charge of medical records.

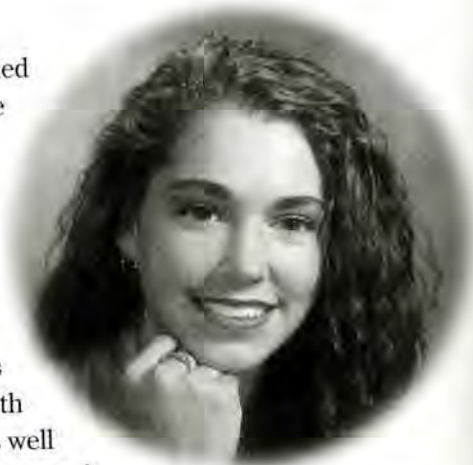
Sandra P. Kenton, class of '68, second from left, met with former President of Nicaragua, Violet B. de Chamorro and fellow team member, Louise Tereeforte, bio-med technician from Thomas Jefferson University. Kenton participated with 33 other team members who screened 259 children and Operated on 133 patient. It is very common for team members to meet with government officials and the various ministries of Health.



Scholarship Funds at Work

I am delighted once again to provide information to the Nurses Alumni Association of Thomas Jefferson University regarding the School of Nursing Alumni Scholarship Fund and the Marguerite G. Barnett Memorial Nursing Loan fund at the College of Health Professions for the 1997-1998 academic year.

This year, the School of Nursing Alumni Scholarship Fund awarded \$1,000 to **Jeanine Kashulines** from Atco, New Jersey. Jeanine currently holds her Bachelor of Science degree in Biology from Richard Stockton College. She will receive her Bachelor of Science in Nursing degree this May, and, as a student of the Accelerated Pathway Program, she will receive her Master of Science in Nursing degree in 2001. In the Accelerated Pathway Program, nursing students work full-time and attend classes part-time after receiving their BSN. This rigorous schedule is certainly a challenge, but Jeanine is well prepared for it after both working as a cook and attending school full-time this past year as well as serving as her Class Ambassador. In the future, Jeanine hopes to work at Thomas Jefferson University Hospital and attain her Pediatric Nurse Practitioner certificate.



JEANINE KASHULINES
TJU - NSG
Accelerated Pathway

Recipients of the Marguerite G. Barnett Memorial Nursing Loan Fund, are selected based upon their excellent academic standing and demonstrated dedication to Nursing care.

This year the fund awarded \$4,750 in loans to the following three students:

Debora Malgieri-Currey, a returning junior from Cecil, New Jersey, received a loan of \$1,250

Melissa Pandola, a returning senior from Philadelphia, received a loan of \$2,500

Samantha Small, a returning senior also from Philadelphia, received a loan of \$1,000

Melissa Pandola is currently enrolled in the RN-BSN program, after studying for two years at LaSalle University. In the future, she is interested in working in Home Care in Philadelphia and possibly pursuing a graduate degree in nursing.



MELISSA PANDOLA

Samantha Small is entering her second year in the Accelerated Pathway Program. She currently holds a B.A. in Philosophy from Skidmore College in Saratoga Springs, New York, and a M.S. Ed. from the University of Pennsylvania. Samantha truly enjoys her Intensive Care Nursery Externship and hopes to continue to work in this area in some capacity after earning her Master of Science in Nursing degree from Jefferson.

You will notice that **Debora Malgieri-Currey** is a returning junior. Debora's story is certainly an inspirational one. For the past five years, Debora has been suffering from RSD, Reflex Sympathetic Dystrophy, a condition in which she consistently experiences chronic pain in her limbs. Though she respects and trusts her physicians, she often feels that no one can fully understand the extent of her pain. During her first clinical rotation, the third patient that Debora met also suffered from RSD. As Debora remembers, the patient was screaming at every doctor and nurse that entered her hospital room and crying because no one understood her pain. But Debora did understand. She told the wary patient, "Just give me five minutes..." and in that short time, she calmed the patient and offered her hope.

Just weeks later, however, Debora fell down a flight of steps and fractured her spine, just prior to October midterms. Did this major setback stand in her way of becoming a nurse? Although Debora may have been unable to complete her junior year in the 1997-1998 academic year due to the wishes of her doctors, she will begin her junior year again this fall. In the future, she hopes to work with patients who suffer from chronic pain so that she can continue to share her experiences with them, and lead them on the road to dealing with their pain successfully.

We want to thank you, Sally and the Nurses Alumni Association, for the continued support to the School of Nursing Alumni Scholarship Fund and the Marguerite G. Barnett Memorial Nursing Loan Fund. Jefferson is so proud to have this endorsement, and I am certain that recipients like Jeanine, Debora, Melissa, and Samantha are honored and grateful to be so designated.

It is wonderful to have resources like these scholarship funds to help us recognize the outstanding efforts of our nursing students. The generosity and thoughtfulness that brought these opportunities to Jefferson will always be appreciated. Once again, thank you for your kind commitment.

Sincerely,

Pamela G. Watson, Sc.D.

The Romania Health Care Partnership

Mary G. Schaal, RN, EdD
Associate Professor

Vice Chair and Director of the Graduate Program

As a child I remember the excitement of my grandparents relating what it was like in the "old days". Often in my years as a professional nurse as I have marveled at a new procedure, equipment or medication that has become a reality after an advancement in technology and science, I have thought, how did we ever survive before this or what was it like in the "old days" before all of this? During my recent trips to Romania I believe that I discovered what it was like in the old days before the knowledge explosion and advent of the support technology that enhance our practice.

Now I fully realize that my frame of reference for the "old days" may differ from that of many of my readers. I graduated from the School of Nursing in 1963. Given the rich, long tradition of nursing education at Jefferson, my concept of the "old days" may be some readers' lived experiences, or my student and early career experiences may be other readers' concepts of the "old days". Regardless, I would like to share the experiences of my colleagues and myself from the Departments of Nursing at Thomas Jefferson University and Thomas Jefferson University Hospital with nurses and nursing in Eastern European Countries (EEC) and the Newly Independent States (NIS) (formerly parts of the Soviet Union). While relating experiences associated with the Romanian Project, the situations are similar in many other EEC and NIS countries.

Today's Romania is a challenging but intriguing collage of traditional legendary images of Dracula and gypsies in sharp contrast with harsh new post-communist realities. Romania, with a population of 23 million people, is the second most populous country in Central and Eastern Europe. Romania had little contact with the outside world during approximately 50 years of communist rule. During the communist rule, and in particular 1966 through 1989 when the dictator Ceausescu ruled, the people of Romania were subjected to constraints in all aspects of life. Since the December, 1989 revolution, Romania has been struggling with transition to a democratic nation. Healthcare remains socialized under the Ministry of Health that competes with all other nationally funded agencies for a share of very limited resources. Romanian hospitals receive scarce supplies of basic equipment and medications and disposable items are rare. While primary healthcare is delivered in the workplace, the scope of that care is limited. Diagnostic studies and most treatments require admission to the hospital. Each medical specialty is housed in a separate hospital. Hospital wards contain six to ten beds that are approximately two feet apart. Today's Romanian health care system is at a developmental stage compared to the United States a minimum of 50 years ago.

Thomas Jefferson University received a two-year, healthcare partnership grant to focus on environmental and occupational health issues in the area of Cluj-Napoca in Transylvania, Romania. Funded by the United States Agency for International Development and administered through the American International Health Alliance, the University aligned with three healthcare institutions in Cluj. The Clinic for Occupational Diseases, is an in-patient facility; the Inspectorate of Public Health is similar to a county health department in the United States; and the Institute for Public Health is primarily a research facility. University departments involved in the partnership initiative include Nursing, Environmental Medicine and Toxicology, and Academic Information and Research Services. The Jefferson Nursing Team is composed of faculty members from the University Department of Nursing and members of the University Hospital Department of Nursing.

Following the initial assessment visit to Cluj in April, 1996, the Nursing Team returned to Romania in June and September, 1997, and March and May, 1998. During the June visit an excellent rapport developed between the American and Romanian nursing teams. Romanian nurses are interested in nursing education and practice in the United States. The Romanian language had no word for nurse. The concept of nurse and nursing in the American context is new to Romanians. Under the communist model "medical assistants" were educated in secondary education programs. Medical assistants performed a variety of functions such as caregiver, lab technician, radiology technician and public health field worker. In the post-Communist era, nursing is struggling to

emerge as a distinct entity. Nursing education is moving to a post-secondary, diploma type model. There are neither national educational standards nor licensure mechanisms. Nurses practice in specialty hospitals. The environment and duties related to practice are comparable to American nursing circa 1930-40. The men and women with whom members of the American team met are warm, caring individuals who accomplish a great deal with extremely limited resources.

Shortly before the nursing team's departure for Cluj, AIHA introduced a Nursing Resource Center project. With the assistance of the Romanian nursing team and their colleagues, a site for establishment of a Nursing Resource Center was identified. Plans for the first nursing conference as part of the Annual Scientific Meeting were developed. However, the Romanian team requested that the American team members present lectures on nursing education and practice in the United States and specific high incident diseases since they did not feel prepared to do a presentation.

Planning for the nursing conference continued between the two visits via electronic mail. In late August a young Romanian nurse was appointed as coordinator of the nursing conference. To the American team's delight, the Romanians requested that the conference agenda be revised to include presentations by their colleagues. Approximately 50 Romanian nurses, including the president of the Romanian nursing association, proudly attended the conference.

Unfortunately, the Nursing Resource Center did not open as planned during the September visit, as the proposed site was not available. However, alternative plans were explored to enable a Nursing Resource to become a reality in Cluj.

The Nursing Team returned to Romania in March, 1998 to conduct a ten day workshop on nursing leadership and management. Eighteen men and women from Cluj and four women from Moldova, who were identified as novice or potential nursing leaders, attended the workshop. The curriculum constituted an intense introductory level course. Each participant developed a project at their practice site through which they would operationalize the principles presented at the workshop. I returned to Cluj in May for the initial follow-up consultation visit with conference participants.

Not only had most workshop participants refined and initiated their projects, five nurses had formed a working group to pursue funding and opening of the Nursing Resource Center. I joined the work group to meet with representatives of the Open Society Foundation (SOROS) to explore funding opportunities and visit potential sites for a Nursing Resource Center. The working group was organized into a Board of Directors with specific duties and responsibilities. Through electronic communication the Jefferson Nursing Team consulted with and assisted the Board of Directors to develop a funding proposal that was submitted to SOROS. Concurrently, a revised proposal was submitted to AIHA. Ultimately, both proposals were accepted and the Cluj Nursing Resource Center is anticipated to open in fall, 1998.

While funding for the project has expired, it is our hope that AIHA will continue to fund nursing endeavors between the Jefferson and Romanian Nursing Teams.



March, 1998 Leadership/Management Workshop, Tihuta, Romania;
Outside Hotel Castle Dracula

Left to right: Dr. Mary Bowen, assistant professor, TJU; Susan G. Miller, RN, MSN, Director, Executive Redesign Implementation Team, TJUH; Diana Vilan, Nurse at the Institute for Public Health, Cluj-Napoca, Romania; Dr. Mary G. Schaal, associate professor, TJU.

Double Honors

Madeline M. Ullom MS, RN, Colonel, United States Army Retired First Janet C. Hindson Award Recipient - 1998

May 14, 1998, Thomas Jefferson University Hospital Department of Nursing held the Janet C. Hindson Award Luncheon and presented Colonel Ullom with the first award.

For nearly three years as a prisoner of war in internment camps on Corregidor and Manila, Colonel Madeline Ullom, in the midst of unspeakable horror, disregarded her own suffering and ministered to the needs of thousands of soldiers, sailors and marines. In makeshift operating rooms and medical and surgical wards she remained faithful to the ideals of her profession and country as she strove to enhance the physical, mental and spiritual well being of her patients and colleagues. After being liberated Madeline Ullom continued to serve her country and achieved the rank Colonel in recognition of her contributions and leadership.

The award is a beautiful piece of lead crystal custom designed, approximately 6 inches at the base and tapers to 18 inches tall. At the top is the Jefferson logo, recipients name and date. The Jefferson Nurses Cap is etched in the crystal and on the base is inscribed - The Janet C. Hindson Award.



*Lt. Col. Madeline M. Ullom
receives Doctor of Humane Letters presented by:
Allen E. Chandler - Board of Trustees, Thomas Jefferson University*

September of 1934, she and 60 other nursing students enrolled in the Jefferson nursing program.

After earning her diploma from Jefferson in 1938, Madeline Ullom joined the United States Army and was assigned to Walter Reed Army Hospital in Washington, D.C. In 1940, she volunteered for duty in the

Philippine Islands and was assigned to Sternberg General Hospital in Manila. During World War II, Lt. Col. Ullom was taken prisoner by the Japanese in May 1942. She was a 30-year old second lieutenant when she was captured on the Island of Corregidor along with 65 other Army nurses.

As a prisoner of war (POW) for almost three years in Manila, Lt. Col. Ullom continued to serve as a nurse to other (POWs) and interned civilians. She was one of the individuals who became known as the "Angels of Bataan." For her heroism, she was awarded a Bronze Star Medal and Two oak leaf clusters. After being freed in February 1945, she remained in the Army and served in Germany and throughout the United States until her retirement in 1964 as a Lieutenant Colonel. Her last post was at Fitzsimmons Army Hospital in Denver as assistant chief nurse and educational coordinator.

While in the service, Lt. Col. Ullom completed two degrees in nursing education, a bachelor of science from Incarnate Word College in San Antonio, Texas in 1948 and a master of science from Catholic University in Washington, D.C. in 1951. Since her retirement, she has remained active in nursing, veterans and civic organizations.

Among Lt. Col. Ullom's numerous awards and honors are the Patrick Henry Award for Loyal and Dedicated Service to Humanity in 1995 and induction into the Sigma Theta Tau International Honor Society of Nursing. A world traveler, she has returned to the Philippines four times.

Lt. Col. Ullom resides in Tucson, Arizona. Madeline Ullom made a career of the Army after the war, retiring with the rank of Colonel.

Doctor of Humane Letters

At the 174th Commencement for the Thomas Jefferson University College of Health Professions on Friday May 15, 1998. Colonel Madeline M. Ullom received a Doctor of Humane Letters certificate and a Jefferson hood.

Madeline was born on New Years Day in 1911 in O'Neill, Nebraska, she became a school teacher in Nebraska but later decided on a nursing career, in part because she had a sister who was an Army nurse. In

Most Blest

*I love to be out in the morn
When the sun peeks o'er the hill,
The dew is sparkling on the grass
And Nature's sleeping still.*

*I love to walk among my flowers
To breathe their fragrance rare,
And revel in the loveliness
Of the colors they wear.*

*But evening has a special charm -
The breezes softly touch,
And a dove will sing the sweetest songs -
The ones I love so much.*

*This truly is a precious time -
When toil is given rest,
And prayers ascend from grateful hearts
To make these hours most blest.*

Rachel Hartnett

Doris Elizabeth Bowman

1920 - 1997



It is with great sadness that the College of Health Professions and the Nurses Alumni Association announces the death of Doris Elizabeth Bowman, on November 4, 1997. Miss Bowman was the former Director of Thomas Jefferson University's School of Nursing (Diploma Program). She graduated from Jefferson's School of Nursing in 1942. Upon graduating, she served in the military with the U.S. Army's 38th Hospital Unit. After obtaining her Bachelor's and Master's degrees in education, Miss Bowman returned to Jefferson as an instructor in Pediatrics in 1954. In 1958, she became Director of the School of Nursing, a post she retained until 1982. The book *Commitment to Excellence*, a history of the School of Nursing, was dedicated to Miss Bowman in 1982. She was designated Emeritus Professor of Nursing in 1982, the first member of the College of Health Professions faculty and the first woman in Thomas Jefferson University history to be so honored. Miss Bowman's portrait was presented to the University in 1980 and remains on display in McClellan Hall.

A service of memory and love was offered in Palermo, NJ. There was a private burial in Arlington National Cemetery in Arlington, Virginia. The family suggests contributions be sent to either: Thomas Jefferson University Development Office, c/o the Doris Elizabeth Bowman Fund, 925 Chestnut Street, Suite 110, Philadelphia, PA 19107 or the Women in Military Service Memorial, c/o The Women's Memorial Department 60, Washington, D.C. 20042-0660.

For many years Doris Bowman was chairperson for the Nurses Alumni Association Scholarship Fund, she was dedicated to her profession and to the Alumni Association. Her hobby was quilting.

Doris, we will miss you.

"A time for everything"

by Geno J. Merli, MD

I was busy making rounds when my beeper indicated an urgent call. To my surprise, it was the vice president of nursing services.

"I'm sorry to disturb your rounds," she said, "but I have to ask you a favor. One of our nurses, Janet Hindson, passed away suddenly two weeks ago and a memorial service is planned for this afternoon. Dr. Rodgers was going to speak on behalf of the medical service, but he's sick and can't participate. Since you knew Janet, could you say a few words in his place?"

I wanted to say no. I was just too busy. But in my heart I knew it was the right thing to do.

For the next hour, I found it difficult to concentrate on the task of rounding. I kept trying to think of a few elegant words to say about Janet Hindson. This unexpected imposition on my time made me a bit aggravated. Not only were my rounds interrupted, but now another hour out of my busy day would be spent at a memorial service. These were hardly the thoughts of a sensitive person.

The auditorium was packed with people that afternoon. As I made my way down the aisle, I stared at the larger-than-life picture of Janet projected onto a screen on the stage. It was a wonderful image of Janet, who was every inch the traditional nurse, always dressed in full whites with a nursing cap.

I offered my condolences to Janet's family. Recalling my selfish thoughts of that morning, I felt racked with guilt.

The service opened with a eulogy from the minister, followed by singing. Then came the remarks from selected staff. Each speaker focused on Janet's unwavering dedication to patient care, her loyalty to her staff, and her professionalism. Some of the speakers were choked with emotion as they spoke of this incredibly warm and caring person.

I was nervous approaching the podium to deliver my remarks. In the audience were the University President, CEO, deans, and various departmental staff. Janet was loved and respected by everyone.

My remarks were brief. I touched on the legacy that Janet left me, which was to always provide the highest-quality, personalized, medical care for every patient who enters the doors of Thomas Jefferson University Hospital. I shared a comment that Janet once made to me. "When you start taking yourself too seriously, Dr. Merli," she said, "that's when you're headed for trouble." Like the speakers before me, I too became emotional.

The service concluded with everyone singing "Amazing Grace." I felt exhilarated afterward. There was such a sense of community in that hall. The hour I spent there gave me a rare chance to reflect on the true spirit of patient care and the selfless natures of the people I work with every day.

Yes, time is important, but we must use it wisely. As Solomon said, "There is a time for everything, and a season for every activity under heaven."

Geno J. Merli, MD, Editor-in-chief, is Ludwig Q. Kind professor and director, division of internal medicine, Jefferson Medical College, and vice chairman, primary care, department of medicine, Thomas Jefferson University Hospital, Philadelphia, PA. The above article was in *IM Internal Medicine*/April 1998/Vol. 19, No.4.

reprinted with Dr. Merli's permission.



JANET C. HINDSON

On the Lighter Side



Just a Note

Author Unknown

To say I'm living,
that I'm not among the dead
Though I'm getting more forgetful
and mixed up in the head.
I got used to my arthritis,
to my dentures I'm resigned.
I can manage my bifocals
but gosh I miss my mind!
For sometimes I can't remember,
When I stand at the foot of the stairs,
If I must go up for something
or have I just come down from there?
And before the fridge so often,
my poor mind is filled with doubt.
Have I just put the food away
or have I come to take it out?
So if it's my turn to write you
there's no need for getting sore;
I may think that I have written
and don't want to be a bore.
Just remember that I love you
and wish that you were near.
Now it's nearly mail time
So I must stand beside the mailbox
with a face so red!
Instead of mailing you my letter,
I have opened it instead!

Church Bulletin Boners—

The following announcements actually appeared in church bulletins, the New York Times news service reports:

For those of you who have children and don't know it, we have a nursery downstairs.

Tuesday, at 4:00 p.m. there will be an ice cream social. All ladies giving milk will please come early.

A bean supper will be held Tuesday evening in the church hall. Music will follow.

At the evening service on Sunday, the sermon topic will be WHAT IS HELL? Come early and listen to our choir practice.

Don't let worry kill you....let the church help.

Thursday Night: Potluck Supper. Prayer and meditation to follow.

This afternoon there will be a meeting in the south and the north ends of the church. Children will be baptised at both ends.

Hospital Humor



Thought I'd let my doctor
check me, 'cause I didn't feel quite right. All
those aches and pains annoy me, and I could not
sleep at night. He couldn't find no real disorder, but he
wouldn't let it rest. What with Medicare and Blue Cross, it
wouldn't hurt to do some tests. To the hospital he sent me, though I
didn't feel that bad. He arranged for them to give me every test that
could be had. I was fluoroscoped and cystoscoped, my aging frame
displayed. Stripped upon an ice-cold table, while my gizzards were X-rayed.
I was checked for worms and parasites, for fungus and the crud. While they
pierced me with long needles, taking samples of my blood. Doctors came to
check me over, probed and pushed and poked around. And to make sure I
was living, they wired me for sound. They have finally concluded; (their
results have filled a page). What I have will someday kill me, my
affliction is OLD AGE.

Author unknown

HOLIDAY DIET

This diet is designed to help you cope with the stress that builds up during the Holidays.

BREAKFAST

1/2 Grapefruit
1 Slice Whole Wheat Toast, dry
8 oz. Skim Milk

LUNCH

4 oz. Lean Broiled Chicken Breast
1 Cup Steamed Spinach
1 Cup Herb Tea
1 Oreo Cookie

MID AFTERNOON SNACK

Rest of the Oreos in the package
2 Pints Rocky Road Ice Cream
1 Jar Hot Fudge Sauce
Nuts, Cherries, Whipped Cream

DINNER

2 Loaves Garlic Bread with Cheese
Large Sausage, Mushroom & Cheese
Pizza
3 Milky Way Candy Bars

LATE EVENING NEWS

Entire Frozen Cheesecake Eaten Directly From Freezer

RULES FOR THIS DIET

1. If you eat something and no one sees you eat it, it has no calories.
2. If you drink a diet soda with a candy bar, the calories in the candy bar are cancelled out by the diet soda.
3. When you eat with someone else, calories don't count if you don't eat more than they do.
4. Food used for medicinal purposes NEVER count, such as hot chocolate, brandy, toast and Sara Lee Cheesecake.
5. If you fatten up everyone else around you, then you look thinner.
6. Movie related foods do not have additional calories because they are part of the entire entertainment package and not part of one's personal fuel, such as Milk Buds, Buttered Popcorn, Junior Mints, Red Hots, and Tootsie Rolls.
7. Cookie Pieces contain no calories, the process of breaking causes calorie leakage.
8. Things licked off knives and spoons have no calories, if you are in the process of preparing something. Examples are peanut butter on a knife making a sandwich and ice cream on a spoon making a sundae.
9. Foods that have the same color have the same number of calories.
Examples are: spinach and pistachio ice cream, mushrooms and white chocolate.
NOTE: Chocolate is a universal color and may be substituted for any other food color.



How to tell if your computer is male

It only does what you tell it to,
and it keeps cutting you off just
when you think you finally made
a connection.

How to tell if your computer is female

No one but its creator understands
its internal logic, and you
find yourself spending your paycheck
on accessories.

Too soon we're old

"Too soon we're old, Too late we're smart,"
I know you've heard this said.
How many times the foolish heart, Contrives to rule
the head. How great another's faults appear,
How very slight, our own, And those with homes of glass
draw near, To cast the sharpest stone.

With careless hands we gather weeds, and throw the
blooms away, Consigning all our deepest needs,
To God's with feet of clay. "Too soon we're old,
Too late we're smart," So has it ever been,
And thoughtlessly we tear apart,
What we might never mend.



Dear Lord, forgive our blindness,
Who see ourselves as strong,
And in Your loving kindness,
Reach down to right each wrong.
'Tis love alone dispels the cold.
And warms the hardest heart,
"For it is much too soon we're old,...
And much too late, we're smart!"

Grace E. Easley

submitted by Dorothy G. Strachan '46

A Few Things Learned During a Long Life

(not necessarily in the order of importance)

Date what you write. Otherwise you nor anyone else will likely remember whether it was written months or years ago. (Of course no one may care).

Human beings are much the same all over the world, the vast majority decent men and women.

Around the globe, a smile begets a smile, stuffed shirts are recognizable everywhere.
A small minority only is despicable.

"Ego" has acquired an unpleasant connotation, but one's integrity and self-respect are supporting forces in life; without them how can one hope for respect from others?

Almost all soups can be improved by a dash of sherry.

The quality of life and effort to improve it are what it's all about.

When given a book, thank the giver within 48 hours; otherwise you will have read it.

Churches, Synagogues, Mosques - to whichever one is oriented - have their ups and downs, yet on balance constitute a great force for good in communities; support them. Don't forget their spiritual leader is a human being too.

At large cocktail parties, stay close to the bar until your second drink, then circulate.

Love, affection, and compassion are allied, but not the same. Reciprocated love is rare; cherish and guard it well.

Affection supports life's infrastructure; compassion underpins the world.

Hold onto the banisters going down stairs.

Second 10 Commandments

1. Thou shalt not worry; it's the most unproductive human activity.
2. Thou shalt not be fearful, most things we fear never come to pass.
3. Thou shalt not cross bridges before you get to them. No one has yet succeeded in accomplishing this.
4. Thou shalt face each problem as it comes. You can handle only one at a time anyway.
5. Thou shalt not take problems to bed with you for they make poor bedfellows.
6. Thou shalt not borrow other people's problems. They can take better care of them than you can.
7. Thou shalt not try to relive yesterday for good or ill, it is gone. Concentrate on what is happening in your life today.
8. Thou shalt count thy blessings, never overlooking the small ones. A lot of small ones add up to a big one.
9. Thou shalt be a good listener, for only when you listen, do you hear ideas different from your own. It's hard to learn something when you are talking.
10. Thou shalt not be bogged down by frustration, for 90 percent of it is rooted in self-pity, which will interfere with positive action.

By Elodie Armstrong, age 90

Permission to use by Thomas B. Turner, M.D.
Dean Emeritus of the John Hopkins Medical School
(submitted by Victoria F. Malinowski, '39)

Twenty Ways to Kill an Organization

Get sore if you are not appointed on a committee, but if you are do not attend committee meetings.

If you're asked by the chairman to give your opinion regarding some important matters, tell him you have nothing to say. After the meeting, tell everyone how things ought to be.

Do nothing more than is absolutely necessary, but when other members roll up their sleeves and willingly, unselfishly, use their ability to help matters along, howl that the organization is run by a clique.

Hold back your dues as long as possible, or don't pay at all.

Don't bother about getting new members. Let the secretary do it.

When a dinner is given, tell everybody money is being wasted on "blow-outs" which make a big noise and accomplish nothing.

When no dinners are given, say the association is dead, and needs a can tied to it.

Don't ask for a dinner ticket until all are sold. Then swear you've been cheated out of yours.

If asked to sit at the speaker's table, modestly refuse

If you are not asked, resign from the association.

Don't tell the organization how it can help you; but if it doesn't help you, resign.

If you receive service without joining, don't think of joining.

If the association does not correct abuses in your neighbor's business, howl that nothing is done.

If it calls attention to abuses in your own, resign from the association.

Keep your eyes open for something wrong, and when you find it, resign.

At every opportunity threaten to resign and then get your friends to.

When you attend a meeting, vote to do something, and then go home and do the opposite.

Agree with everything said at the meeting and disagree with it outside.

When asked for information, don't give it.

(the above was reprinted from the 1949 Nurses Alumni Bulletin,
also appeared in the Canadian Pharmaceutical Journal)

*F*iftieth Anniversary Class of 1948



...having some "Thank You" notes from our 80 and over graduates. The notes were all hand written by the recipients.

I want to express my heartfelt thanks for the very beautiful flower arrangement you sent me for my 88th birthday. The flowers were so lovely and so fresh, I had them for almost 10 days.

Dear Alumni, Thank you so much for the gorgeous flower arrangement you sent for my 92nd birthday. It is such a gracious and thoughtful thing to do. It is much appreciated. Please pardon this scribble, I'm legally blind and my eyes just won't behave.

Dear Alumni, Thank you for the beautiful cut flower arrangement that arrived to commemorate my birthday. It's nice to have friends. Happiness to all of you.

Dear Alumni, The birthday flowers were beautiful. Thank you very much, they made my day complete.

Dear Alumni, Thank you kindly for the beautiful bouquet of flowers I received from my Alumni Association in remembrance of my 86th birthday. They have been a delight.

Dear Friends, Thanks again for the beautiful flowers. They always bring fond memories of the many friends I gained, and the good times and some unpleasant experiences that taught us patience and tolerance. I keep well at 95 years and enjoy a pleasing environment among old friends and new ones. I really appreciate the flowers and the thoughts behind the gift. Keep up your good deeds.

Dear Folks, Thank you many, many times for the beautiful flowers for my 95th birthday. They were a pleasure to look at and a surprise to have a horn and three noise makers among the flowers. The flowers lasted a long time.

Mary E. Albright Olinyk
1108 Park Boulevard, Juniata
Altoona, PA 16601

+ **Mary J. Archer Porter**

+ **Barbara J. Bailey Roach**

* **Margaret M. Basler Blaine**
112 Fairmont Drive
Bel Air, MD 21014

Lois M. Bilger Kelley
602 S. End Road
Plantsville, CT 06479

* **Margaret E. Bortner Becker**
10436 Golf Course Road
Fayetteville, PA 17222-9608

* **Mercedes F. Breen Christ**
33 Louise Drive
Milltown, NJ 08850

* **Mildred Brokenshire**
Spencer
48 Salem Lane
Little Silver, NJ 07739

Ruth R. Bullock Garrett

* **Doris A. Burke Hano**
7202 Academy Road
Warrenton, VA 20187

+ **Lillian L. Casaday Bagamery**

Ruth E. Cogan Brady
14696 Olde Mill Pond Court
Fort Myers, FL 33908

* **Mildred A. Cohen Hindman**
9652 Oakwood Hills Court
New Port Richey, FL 34655

Eleanor M. Cominsky
Dunkleman
3472 Wheeling Drive
Santa Clara, CA 95051

* **Inez E. Cornelius Mirenda**
22 Rampart East
Media, PA 19063

Gladys M. Curts Weaver

Shirley M. Darling Horowitz
24400 Tamiami Trail #116
Bonita Springs, FL 34134

* **Bettylou Daubert Brown**
522 E. West Street
Wind Gap, PA 18091

* **Faye E. Deiter Groff**
1241 Lampeter Road
Lancaster, PA 17602

* **Bertha Destan Geary**
R.D. # 2, Box 4419-A
Jonestown, PA 17038

Arlene R. Diehl Cohen
6317 Lenox Road
Bethesda, MD 20034

* **Dorothy I. Diehl Dickie**
625 Walnut Street
Mifflinburg, PA 17844

Alexa H. Dombrosky Seepol

* **Nadine Dopirak Fetsko**
320 Timber Jump Lane
Media, PA 19063

Barbara F. Drake Kinkead
Box 605
Round Lake, NY 12151

* **Elinor L. Duke Doubet**
P.O. Box 790
41 Arnold Boulevard
Barnegat Light, NJ 08006

* **Laurelle Dutton Quick**
606 Oak Drive
Lakeland, FL 33803

Carolyn E. Ekdahl Hankins

* **Eleanor Fetsko Adams**
R.D. # 4, Box 380
Dallas, PA 18612

Resumé of Minutes of Alumni Association Meetings

May 3, 1997 - 59 members present.

The minutes from the previous meeting were read by the Corresponding Secretary and approved.

The Treasurer's report was read and approved.

Committee reports were given.

Alumni Office Coordinators Report - Birthday flowers and/or cards were sent to 82 of our 80 and older graduates this past year.

Election results: A copy of the slate of officers (approved by the board of Directors) with their biographies was given to those present at the meeting. The ballot was unanimously accepted by all present with a voice vote.

1. Jeanne M. Kane, '68
2. Nancy Konstanzer, '50
3. Carole Rosle, '56
4. Mary Schaal, '63

Unfinished Business - none.

New Business

- 1 - Vera Paoletti presented the possibility of a Fall Social being held in Philadelphia, the majority present were interested.
- 2 - Pam Watson, Chair of the Baccalaureate Program sent a letter to the President, Sally Wagner, informing her about the development of the process concerning licensure for volunteer nurses.
- 3 - President Sally Wagner mentioned that we had tote bags and a few other items available for a donation.

September 9, 1997 - 16 members present.

The minutes from the May 1997 meeting were distributed read and approved.

The Treasurer's report was read and approved.

Committee reports were given.

Alumni Office Coordinators report - From May to September birthday flowers and/or cards were sent to 23 of our 80 and over graduates.

Unfinished Business

- 1 - Following the Fall Social luncheon tours of the Learning Research Center in the Department of Nursing and the newly refurbished student lounge on the 18th floor Edison building will be available for those who are interested.

New Business

- 1 - A motion was made and accepted to raise the salary of the Treasurer from \$3,000 per year to \$4,000 per year and to increase the Alumni Office coordinators salary from \$6.00 per hour to \$8.00 per hour and to include an annual cost of living increase, effective January 1, 1998. This is the first salary increase since 1985.

November 11, 1997 - 11 members present.

The minutes from the previous meeting were distributed, read and approved.

The Treasurer's report was read, accepted and filed for audit.

Committee reports were given.

Alumni Office Coordinators report - Birthday flowers and/or cards were sent to 10 of our 80 and over graduates during September and October.

The Alumni Office was moved on October 16, 1997. Our new address is 130 South 9th Street, Suite 702, Philadelphia, PA 19107-5233. Phone number (215) 955-8981.

Old Business

- 1 - Reimbursement to the Satellite Groups was discussed - A motion was made and accepted to provide \$125.00 for each Satellite Group per meeting, up to 4 meetings per year.

New Business

- 1 - The question of co-chairpersons for committees was discussed. Motion was passed that this would be at the discretion of the chairperson of the committee.
- 2 - Motion was passed to give \$250.00 in memory of Doris E. Bowman, '42 to the Development Office for the Doris E. Bowman Education Fund and to give \$250.00 to the Women in Military Memorial.

January 13, 1998 - 14 members present.

The minutes from the previous meeting were distributed read and approved.

The Treasurer's report was read, approved and filed for audit.

Committee reports were given.

Alumni Office Coordinators report - Birthday flowers and/or cards were to sent 6 of our 80 and over graduates for November and December. Christmas poinsettias were sent to 4 members in lieu of money. An arrangement of cut flowers and a box of Perugnia candy to two others in lieu of money.

Unfinished Business

- 1 - It was agreed that committees will have co-chairs as needed.

New Business

- 1 - A letter was read from Pam Watson stating that she got better acquainted with Doris Bowman when Doris and Pam's late husband were both patients on the same nursing unit.
- 2 - A discussion was held about what we could do to help improve health care due to the cut back in staffing. More discussion at our next meeting.
- 3 - Our records show that we bought our office computer in January 1991, it is time to get a new one. We need one with more memory than the present one. Money will be used from the Relief fund to pay for the new computer.

March 10, 1998 - 14 members present.

Alice C. Boehret, President ex-officio presided at the meeting in place of the President Sally Hindson Wagner. Sally was absent due to the sudden death of her sister Janet Hindson on March 9th. Janet was also the Vice President of the Alumni Association.

Minutes from the previous meeting were distributed, read and approved.

The Treasurer's report was read, approved and filed for audit

Committee reports were given.

Alumni Office coordinators report - Birthday flowers and or cards were sent to 16 of our 80 and over graduates during January and February.

Unfinished business - none.

New Business

- 1 - A new computer will be purchased within the next month. We will get a Hewlett Packard windows 95, word 97, Funds will be used from the Relief Fund Trust to pay for the computer.

May 2, 1998 - Annual meeting - 50 members present.

The minutes from the March 10th meeting were not available. The March 10th meeting was held the day following Janet Hindson's death with Alice C. Boehret presiding for a short meeting.

The Treasurer's report was accepted as read and filed for audit.

Committee reports were given.

- 1 - Scholarship - Alice C. Boehret, Chairperson reported that applications can be submitted for certification expenses.
- 2 - Development - Betty Piersol - The Diploma School of Nursing Alumni Association-Mabel C. Prevost Scholarship Fund (Jeff 2000 fund), total from January 1, 1997 to December 31, 1997 \$59,205.00 (this includes a bequest of \$50,000 from the estate of Margaret Armstrong Tunnard, '35). January 1, 1998 to April 30, 1998 we received \$2,005.00 for this fund, this includes 4 matching gifts. Our goal is \$150,000 by the year 2000. February the book value for the fund was \$141,407.96.

Alumni Office Coordinators - Birthday flowers and/or cards were sent to 15 of our 80 and over graduates during March and April.

Unfinished Business - none.

New Business

The Janet C. Hindson Memorial Fund has been established by the Thomas Jefferson University Hospital Department of Nursing Service. Contributions may be sent to the Janet C. Hindson Memorial Fund, Jefferson Development Office at 925 Chestnut Street, Suite 110, Philadelphia, PA 19107. The Hospital Department of Nursing Service also plans to give a yearly award - The Janet C. Hindson Award. The award recognizes individuals whose work exemplifies the caring and service to others that characterized Miss Hindson's life. The award is given to an individual who has demonstrated steadfast caring for the most vulnerable in society. Steadfast caring embodies devotion to relieving the suffering of others; respect for colleagues; and commitment to creating environments that enhance the physical, mental and spiritual comfort to others. The first award was given this year to Madeline M. Ullom MS, RN, Lt. Colonel United States Army, retired. Madeline is a 1938 graduate of the Jefferson Diploma Nursing Program of Jefferson Hospital. The award was an exquisite piece of lead crystal with the Jefferson nurses cap etched on it. It is truly beautiful.

Respectfully submitted,
Nancy E. Powell
Recording Secretary

Simple Things

*The fragrance of the early morn,
The sunlight on the sill,
The smell of coffee perking, and
Outside, the robin's trill.*

*A friend's voice on the telephone,
A child with a smiling face,
A letter from a loved one dear,
Some flowers in a vase.*

*Just little things, these treasures mine,
And yet, somehow, I find
They brighten my entire day
With cheer and peace of mind.*

Beverly J. Anderson

Alumni Office News

In October it will be a year since our office was moved to the Edison Building, it was a good move for us, we are happy with the office space and the people who are in all the offices on 7th floor, they are a great group of people. It seems we are busier than ever, could it be our ages are catching up with us and we are getting slower, no, I don't think so, we are just plain busy.

E mail address - The address for the Alumni Office e mail is - nurse.alumni@mail.tju.edu
Remember, Tuesday is our regular day in the office so, there may be a delay in answering your message. News about the Diploma School of Nursing can be found on the College of Health Professions, C-H-P-Website at: [http:// jeffline. Tju.edu/ CWIS/CHP/Alumni/](http://jeffline.tju.edu/CWIS/CHP/Alumni/)

BIRTHDAYS - Birthday cards and/or flowers were sent to our 80 and over graduates. With the "Happy Birthday" names and dates we have printed a few of the many beautiful thank you notes we receive, they make us feel this is worthwhile. If you know of any diploma or White Haven graduate who is 80 or over, send us the following: Name - first, maiden and married. Year of graduation. Correct address. Birthday - month, day and year. Social Security and telephone numbers.

COMMITMENT TO EXCELLENCE - If you did not receive a copy of this book when the Diploma School of Nursing closed in 1982, and would like to have a copy, (no charge) let us know and we will send you a copy, as long as our supply lasts.

NOSOKOMOS - We need a 1968 Nosokomos to complete our set of year books in the Alumni Office.

PHOTOS - We have 5x7 photos of the three nurses , copies of the portrait presented to the University by the class of 1942 on their 50th anniversary (in a folder) \$2.00 contribution (includes postage and handling.)

TOTE BAGS - We have black, waterproof, zipper closing tote bags with the Jefferson Nurses Pin logo. Available for a donation of \$7.00 plus \$2.00 for handling and postage.

1971 YEAR BOOKS - We have six copies of the 1971 Nosokomos, they're free, let us know if you want a copy.

SOCIAL SECURITY NUMBERS - We need your Social Security Number, it serves the Alumni Office as the primary identification number in our Alumni computer system. Many of our lists and labels are sorted by the social security number. Help keep our office record updated by including your SS# when we ask for it.

DOUBLE YOUR DOLLARS - Do you or your spouse work for a matching gift company? You could double or even triple your gift by including a completed matching gift form with your gift.

LODGING - When making a reservation or on registering at a hotel or bed & breakfast in Philadelphia ask if they give Jefferson rates, tell them you are affiliated with Thomas Jefferson University. It would be wise to have your Alumni Identification card with you.

DISCOUNT PARKING FOR ALUMNI - Jefferson Alumni can receive Jefferson discount parking rates by purchasing coupons for use in the Jefferson parking garage on 11th Street or in the Walnut Towers garage at 9th and Walnut Streets. The \$4.00 coupons may be used anytime after 2:30 PM on weekdays and anytime on weekends and holidays to a maximum, of 18 hours parking. coupons can be purchased at the Commuter Services Office, 131 South 10th Street, Monday through Friday, 7 AM to 6 PM, or on Saturdays, 11 AM to 1 PM, phone: (215) 955-6417

It would be wise to have your Alumni Identification card with you.

IDENTIFICATION CARDS - If you lost your Jefferson Alumni Identification card or if you never got one, call the College of Health Professions Alumni Office, (215) 503-7709 ask for a replacement card. There is a \$10.00 charge for a replacement card.

VOLUNTEERS - To our loyal Staffcation Engineers - we say many thanks. Your willing hands make getting mailings ready a pleasure.

Betty Piersol and Peg Summers
Alumni Office Coordinators

Our address:

Nurses Alumni Association
Thomas Jefferson University
130 South 9th Street, Suite 702
Philadelphia, PA 19107-5233
Telephone (215) 955-8981
E-mail: nurse.alumni@mail.tju.edu



Committee Reports

Bulletin Committee

Thank you for sending interesting class news and articles. It always amazes me the many various and sundry things our nurses do, some for profit and some for fun; you are really a great group of people.

Many, many thanks to all who contributed to the publishing of the Bulletin. Special thanks to our proof readers. As careful as we proof read, we still miss some errors, please forgive, it's not intentional.

My one and only request - when you send anything for publication; please; do not use abbreviations and write legibly.

We hope you enjoy reading the 1998 edition of the Alumni Bulletin.

Peg Summers
Chair, Bulletin Committee

By-Laws Committee

The revised By-Laws were mailed to all dues paying and life members by the end of June 1998. If you did not receive a copy and would like a copy, please contact the Alumni Office.

Peg Summers
Chair, By-Laws Committee

Relief fund Committee

To all Diploma Nurses! As you know, we, the Jefferson Nurses Alumni Association, have a nurses "Relief Fund". The purpose of this fund is to assist the graduates of the School of Nursing (Diploma Program) and the White Haven School of Nursing, who are ill, disabled or having financial difficulties.

The preliminary application found in the back of the Alumni Bulletin can be completed and sent to the Alumni Office. An additional form will then be sent to you by the Relief Fund Committee. When completed and returned the committee will evaluate the request, determine the amount of assistance to be given and the applicant will be notified as soon as possible. All the information on the application is confidential.

If you know of anyone that needs this type of assistance, or if you personally need assistance, do not hesitate to complete the application in the back of the Alumni Bulletin.

This past year we have been able to financially assist eight of our graduates with monthly checks and several with single checks. Two of the graduates receiving monthly checks passed away this year. The Relief Fund also sends monetary gifts at Christmas time to those graduates known to be homebound or in a nursing home. Birthday flowers and/or cards are sent to our graduates who we know will be celebrating their 80th or over birthday.

Lorraine McCall
Chair, Relief Fund Committee

SOCIAL COMMITTEE

Dear Fellow Alumni,

Can you believe we had rain on the day of the Alumni luncheon on May 2, 1998? No problem... the rain didn't have any bearing on the festivities going on inside Jefferson Alumni Hall. Talking, eating and story telling were going on all afternoon. We did a little business also. This year's luncheon represents the 65th luncheon for the Alumni Association that has been in existence for 103 years.

The basic format for the day was maintained. The membership's meeting was in the Brent auditorium at 10 AM; the cocktail/social hour was in the Eakins lounge following the meeting; and the luncheon was in the Jefferson Alumni Hall main dining room. The special part of the day is always seeing our classmates and fellow alumni. This year we had the slides again of Jefferson students, nursing sights and surroundings of years gone by. The pictures were on a repeating carousel slide projector so everyone could reminisce throughout the entire day. Many of the approximately 275 attendees remembered many of the old buildings and patient care areas. It was surprising how easily everyone was recognized on the slides. We haven't changed that much after all!!

The main dining room had an array of plants and balloons on the tables that provided a very festive atmosphere.

Many thanks to Jeanne Kane, Vera Paoletti, Hope Russo Schooley, Joann Brosious and Joy McCann for their part in having the luncheon flow so smoothly. Special thanks to Betty Piersol and Peg Summers who again took care of the invitations, the responses and the money. The luncheon continues to be a huge success because we work together so well. We would enjoy having additional alumni join us in the planning and hosting of the luncheon. Please contact us through the Alumni Office (215) 955-8981. We welcome your ideas and assistance.

The 104th anniversary luncheon is Saturday May 1st, 1999. Please mark your calendars. We'll be looking forward to seeing you.

Paula J. Levine, RN, MBA
Chair, Social Committee

Clara Melville - Adele Lewis Scholarship Fund 1997 - 1998

Eight scholarship applications were sent and eight returned. Scholarships were granted to the following graduates of the Diploma School of Nursing.

Ann R. Curcio, '80	B. Lynne Borden, '76
Diane Carugno, '78	Mary Ann Ragone, '80
Leslie M. Tahsler, '76	Angela Dages, '81
Barbara Leedom Russ, '77	Theresa Dunford, '78

A student scholarship was granted in 1997 and 1998 to Rose Ann Dietrich, daughter of a graduate who is enrolled in the Baccalaureate program at Thomas Jefferson University.

A close relative (daughter, son, granddaughter/son, niece or nephew) of a graduate of the Diploma Program planning to attend Jefferson's Nursing Program could be eligible to receive a scholarship, provided all requirements are met.

Money was granted for one certification costs to Laurel A. Gutter, '79.

Please use the 1998 revised application. Application forms are available in the back of the Bulletin and from the Alumni Office.

If any diploma graduate is interested in receiving monies from this fund, please direct all inquiries to the Alumni Office.

Carole Rosle
Chair, Scholarship Committee

Development Committee Report 1998

The Development Committee wishes to thank all of you for your generous giving, support and loyalty to our Alumni Association. All contributions received after the Bulletin goes to press will be gratefully accepted and acknowledged. However, your name will not appear in the Bulletin as a contributor.

So far in 1998 we have received 5 matching gifts, and we thank you. REMEMBER TO DOUBLE YOUR DOLLARS! If you or your spouse work for a matching gift (grant) company, include the completed matching gift form with your contribution. You could double your dollars. Matching gift donors receive a thank you from the Alumni association and the University.

From January 1, 1998 to August 15, 1998 (press time) total contributions (including matching gifts, memorial gifts, general fund and all scholarship funds) total \$29,486.00.

1925 - 1931 - \$740.00

Lillian Dilliard Hartman '25
Filomena Tiracchia Doherty '27
Mary Stauffer Malick '28
Ruth Sellers Johnson '30
Muriel Stevens Canis '30
Minnie Souder Ruh '30
Dorothy Confer Stephens '30
Minnie Underkoffler
Humphrey '30
Margaret Spatz Gauger '30
Marian Lewis Petrosky '30
Virginia Emmert Leo '31
Mary Taylor Lawley '31
Eleanor Watt Hager '31
Evelyn Reeser Arnold '31
Helen Walp Hubbard '31
Dorothy Peterson '31
Mary Crowe Murtha '31
Anna Scafa Scanlan '31

1932 - 1933 - \$425.00

Mildred Smith O'Connor '32
Dorothea Bulette Watson '32
Gladys Arnold Blue '32
Lucille Harpel '32

Marie Scherer Maxwell '32
Pauline Helman Kough '33
Catherine Gray Paine '33
Dorothy Steele Norris '33
Ruth Bay Fennell '33
Martha Long Garver '33
Ellen Piatt Vetenko '33

1934 - \$345.00

Kathleen Warner Armitage
Betty Piersol
Anna Jacoby Gehrke
Helen Reimer Motsay
Julia Tyler McCracken
Mildred Dore Estrada
Kathryn Hoffman Snader
Marie Keene Lawton
Dorothy Raubenhold
Mildred Myers Smith
Evelyn Wilson Frazier
Helen Hare Duncan
Margaret Yarnall Snear

1935 - \$265.00

Marian Battin Coutts
Ellen Crawford Teague

Martha Pauline Latsha Tharp
Esther Patton Weber
Eleanore Henry Porter
Louise Herrold Ellis
Rhoda Slaybough Krumrine
Frances Kelly Fisher
Martha Willing King
Esther Latsha Neidig

1936 - \$340.00

Myra Cleo Snyder Dunkle
Mary E. Tananis
Margaret Pound Ransom
Evelyn L. Dute
Lydia K. Yerkes
Elizabeth Stephan Miller
Marian E. Smith
Jane Nickel Moyer
Thelma Marks Saylor
Emma Painter Lanzetti
Elinor Farber Brosious

1937 - \$295.00

Gladys Welty Reichard
Elizabeth Killings Mowday
Caroline Hill Masuda

Harriet Spatig Zeller
Helyn Long Romberg
Jean Heine Arnold
Dorothy Kline Miller
Alice Leatherman Fulmer
Dorothy Richter Lewis

1938 - \$210.00

Alice L. Schilling
Sara Kelly Little
Matilda Snare Finn
Madeline Ullom
Wilma Benner Lewis
Edith Gendebein Reeves
Anita Bryan Eisner
Mary Reeder Copeland
Mildred Greenlee Durham
Linnea Lindquist Casperson

1939 - \$355.00

Grace Bird Peterson
Dorothy Ranck Long
Mary Schwab Gregg
Grace Roller Castner
Olga Dygan Mitchell
Victoria Malinoski
Julia Smey Kennedy
Leah Lucabaugh Stambaugh
Harriet Kellner O'Connor
Marjorie Cooper Richter
Juliet Umberger Light
Ada Smith Ford

1940 - \$500.00

Marion Kustay Sobiesiak
Alice Freed Moore
Judy Elliott Kesselring
Bernice Wigglesworth Sprecher
Hope Kramer Mood
Ellora Endicott Meyer
Stella Jedrziewski Wawrynovic
Norma Zeigler Smith
Janet Hicks Arnold
Averene Summerfield Murphy
Edna Fortner Feloni
Marion Jones Tracey
Goldie Byers Pringle
Ida Griffiths Varga
Margaret Foor Miller
Sara Van Tilburg Cattermole
Alma Shaffer Shofstall

1941 - \$515.00

Margaret Summers
Leah Hummel Edwards
Dorothy Groman
Jean Lockwood Wagner
Frances Huston Rumberger
Helen Swan Joslin
Sophia Pickens Driscoll
Gene Roush Jerabek
Kathryn Duffy Quackenbush
Dorothy Kishbaugh Freeman
Geraldine Williams Waters
Clara Mae Snyder Fitts
Harriet H. Werley

1942 - \$615.00

Alice C. Boehret
Dolores Sample Nelson
Dorothy Fraley Templeton
Ruth Moore MacAdam
Beatrice Raub Staron
Rose Pesci Nicaastro
Ruth Thorp West
Anna Alexander Krall
Dorothy Maag Frizen
Mary Jane Lardin Braid
Alice Boschert Phelan
Angela D. Clark
Ellen McCurley Steward
Gladys Reed White
Irene Lauver Polner
Ferne Paff Lubin
Vi Cook Brubaker
Nancy Habecker Maxwell
Dorothy Edgar Burns
Rhoda A.M. Burg Weisz
Lois Longacre Kelly
Dorothy Cloud
Madaline Kinch Knight

1943 - \$485.00

Esther Milewski Kahn
Virginia Hershey Donahey
Betty Calhoun Suttles
Ruth Sunderland
Ruth Painter Greener
Kathryn Rutt Combs
Amanda L. Smith
Elaine Meyle Trankley
Ann Lois Davis Cabrey
Betty Metzger Shaw
Virginia King Parry
Mary Keatley Williams
Jean Drysdale Warren

Ruth A. Jones Schmitt
Muriel Lloyd Peake
Dolores Davis Wilkinson

1944 - \$305.00

Grace Little Emery
Rosie Smith Jones
Helen L. Campbell
Mary Lou Gaston Stewart
Geraldine Schreffler Meyer
Charlotte Stover Ellenbogen
Marge Lambert Swindlehurst
Elaine Keiser Carrol
Mary Snook Smolkovic
Vivian Frankenfield Gragg
Virginia Kerr Allen
Maureen Sharpless McCool
Vivian Williams Reinhart

1945 - \$635.00

Mary Jane Holcomb Trautman
Janice Kline Jacoby
Lillian Utterback Herrick
Charlotte Cooper Phillips
Florence Carlson Harley
Christine Lindes Park
M. Elaine Anderson Barrick
Kitty Betz
Betty Moyer Greenwood
Anna Kuba
Dorothy Ace Roberts
Ruth Laube Covell
Jane Bellis Mack
Nellie Chillem
Beta Butzer Shaw
Alta Kressler
Jean Fishel Carter
Jane Freed Nyce
Marion Kelly Carver
Evelyn Sherick Sell
Lenore Brady Strigari
Dorothy Dusman Mowery

1946 - \$980.00

Betty Weldon Saunderlin
Jane Jarrett Fox
Elaine Stong Kimbel
Gloria Becker Kovack
Laura Maurer Pollack
Shirley Kneebone Rush
Dorothy A. Fessler
Jeanne L. Lebkicher
Nelmah Faust Shaffer
June Spalding Eyerly

Jeanne Herr Burkins
Geraldine Hart Rockel
Ellen Rowan Stephens
Alice Caldwell Hornickel
Isabelle Reeder Hartley
Louisa Ellison Eudy
Muriel Hopkins Scott
Helen Kopilchack
Mary Holzman McQuown
Shirley Schroy Hersey
Evelyn Swartzlander Rigglin
Betty Yost Zehner
Jeanne Supplee
Jeanne Null Collevachio
Laura Patterson Hart
Nancy Eathorne Seeley
Dorothy Gilardone Strachen
M. Elizabeth Allison Koch
Josephine Pispcky Warner
Elaine Schappet Haines
Jean Gilbert Metzler

1947 - \$660.00

Laura Bielon Tobia
Ann Zimmerman Boyer
Elizabeth Martin Spencer
Marie Louise Baloga Peters
Virginia Sturges Lawrence
Elizabeth Prisnock
Elizabeth Golden Cooper
Irene Evancho Werner
LaDean Beattie Kramp
Hilda Crane Lineweaver
Mariea Buffum Hunter
Jane Black Guerin
Florence Bell Mitchell
Helen Koerner Corrigan
Julia C. Stout
Irma Schuetz Heller
Ruth Miller Downey
Ruth Groves McCormick
Elizabeth Pyle Miller
Betty Steward McConnell
Paula Correnti Tyler
Col. Arlean Miller
Doris Young Moore
Janet Edwards Maurer
Barbara Hendershot Marks
Carol Stevens Covert
Harriet Knerr Hefner
Jane Treon Reitz

1948 - \$1,230.00

Louise Swartz Lorah
Joyce Spangler Weik
Lois Bilger Kelley
Bertha Destan Geary
Dorothy Peterson Turnbow
Irene Narcowich Kaufman
Elinor Duke Doubet
Hazel Trimmer Barkdoll
Phyllis Russell Szewczak
Jean Shirey Wighaman
Patricia Long Haupt
Dorothy Mogle Forshey
Faye Deiter Groff
Rachel Irvine Herbert
Betty Towsey Daughenbaugh
M. Arlene Yohey Watkins
Mildred Cohen Hindman
Sophia H. Gormish
Nancy Weikel Ritzman
Mercedes Geil Weber
Nadine Dopirak Fetsko
Doris Haines Stevens
Inez Cornelius Mirenda
Doris Burke Hano
Kathryn Hafer Eyrych
Margaret Basler Blaine
Anne Olivia Carballo
Aileen Hickey Wapner
Dorothy Diehl Dickie
Betty Johns Budrow
Norma Grundon Bicking
Mildred Brokenshire Spencer
Althea Quairiere Snow
Sara Newkirk Boydlatour
Mercedes Breen Christ
Christina Morrison Blasius
Helen Taylor Carrier
Betty Jane Hanning Stillman
Anita Hawthorne Garrett
Sara Hershman Leopold
Betty Parsons Konjusky

1949 - \$530.00

Carolyn Sprenkel Marchione
Louise Dietz Strayer
Marjorie Ball Hoeck
Shirley Snyder Bittner
Phyllis Schadel Huntzinger
Doris Graver Schuman
Hazel Sheckler Kogler
Mildred McCormick Galvin
Helen Daugherty Barrett
Florence Servello McAlpin

Bette Mengel Borkey
M. Lucille Flavell Henkelmann
Lorraine Milewski McCall
Kathleen McGearly Tierney
Elsie Skvir Nierle
Allene Hanna Gallagher
Judith Morrett Hess
Theresa Bushek Poli
Jean Reeves Wolfe
Jane Kauffman Miller
Margaret Hacherl Pontzer

1950 - \$715.00

Janet Hindson
Joan Shaver Hermann
Mary Louise Moore Brumbaugh
Joan Christman Clauss
Emily Nash Hollenbach
Marilyn Buxton Gould
Mary Osborne Foy-Failla
Ellen Baran Stahl
Mary Skubic McDowell
June Matsuo Fujita
Twila Anderson Sanborn
Clara Richardson Flynn
Elizabeth Laskowski Greenlee
Elinore Satterfield Lynch
Helen Sheriff Rightor
Anne Werner Breach
Ruth Swinehart Merroth
Jane Heffelfinger Whipple
Rita Krestynick Bolinsky
Jean Hohe Larkin
Barbara Fisher Ackerman
Diane Palmer DeHuff
Helen Myers Rosencrans
Martha Lundfelt Peter
Margaret Henry Jones
Ellen Gardner Spuhler

1951 - \$420.00

Nancy Thompson Powell
Jane Hawk Aires
Jeannette Plasterer
Louise Simonson O'Neill
Dorothy Dewees LoSasso
Lorraine A. Jeitner
Barbara Edwards Beam
Kathie Adams Moody
Elizabeth Moll Chevola
Martha Hackett Santoro
Barbara Duckworth Arkes
Dolores Pauster Gorham
Ruth Young Roth

Marian Hoffman Narbuth
Marian Thorp Williams
Peggy Eckhart Hess
Jeanne Holzbaur McLaughlin
Nina Davis Weller
Ethel DeWitt Rust
Anna Troxell Humphreys
G. June Wheatley Gerraughty

1952 - \$195.00

C. Ann Oberholtzer Brugger
Nancy Groh Messick
Joyce Mangle Simpkins
Margaret Faust Keates
Jeanne Flanagan Ryan
Barbara Wilhelm Tichian
Ann Savage Walters

1953 - \$275.00

Kathleen Margiasso Keating
Irene Gibson O'Brien
Jane Reimer Lemmon
Janet Edwardsen Meredith
Joyce Weidner Mest
Betty Haught Anderson
Sharon Lavelle Kelly

1954 - \$425.00

Phyllis Barrett Ostman
Sarah Hindson Wagner
Carole Glass Hammon
Ann Scarlett Jordan
Helen Fetsko Besecker
Barbara Newcombe
Barbara Reiner Bachman
Doris Henry Schramm
Anne Loughran Delaney
Rena Sauvageot Graham
Mary Billig Carter
Lou Ann Zartman Craley
Margaret Irwin Riemer
Mary Jane Neff Gabriel
Joan Nichols Davis
Genevieve Alderfer Batten

1955 - \$530.00

Joyce Ingling Salazar
Barbara Smith
Mildred Murray Kline
Elizabeth Jones Hubbs
Adrienne Marasco Rodgers
Marianne Pratt Shinkevich
Takako Hirata Tokumasu
M. Jane Hancock

Audrey Titlow Priga
Marjorie Roberts Boyer
Dolores Wisotzkey Spirt
Georgene Strazzeri Callahan
Nannette De Long Smith
Dolores Heckenberger
Susan Watson Simoneau
Dawn Deitman John

1956 - \$235.00

Betty Depo Miller
Joan Walker Randolph
Helen Wisniewski Hervada
Marguerite Johnson Domenick
Florence Roche
Marilyn Robertson Glauber
Paula Scarlett Kenworthy
Carole Ferry Rosle
Betty Pflieger McElroy
Joan Elbertson McGinnis

1957 - \$655.00

Jean Seely Abbott
Georgann Jacobs Miller
Esther Warthin Webb
Rose Marie Tomasello
Ginette Risser Garretson
Nancy Blair D'Angelo
Julia Fernandez Placendo
Gretchen Aschenbach Baker
Carol Hyland Gray
Mary Eichman Cowen
Margaret Milotich Martin
Joan Powell Lutz
Betty Hassenplug Graham
K. Marilyn Kostenbauder Smith
June Reginak Dupnock
Louise Angelo O'Brien
Audrey Taylor Meunier

1958 - \$590.00

Janis Priester Wilkinson
Barbara Barrett Borkowski
Mary Ellen McDonald
Muriel Joan LeVan Keller
Barbara Hand Brodovsky
Yvonne Foster King
Linda Doll Eppley
Geneva Hunsinger Bowman
Edna Lockwood Hneleski
Barbara Wilson Kelso
Joan Mosley Pesce
Marie Sarappa Keenan
Jeanne Bushey Metz

Nancy Beard Griggs
Mulveena Kovarie Foote
A.J. Sakella Daneman
Lois Boeckel Toomey
Patricia Endo Watanabe
Barbara Beard Garzon

1959 - \$515.00

Vera Stevens Myers
Carol Jones Stange
Judith Wright Bloes
Anne Major Jones
Carol Corkery Staas
Joanne Scherer DiAlonzo
Betty Hughes Kosko
Carolyn Wilson Dales
Janet Klinestiver Mosley
Carol Karnes Wenzel
Elizabeth A. Ossman
Nancy Knoll Viereck
Jane Ryan Dietrich
Sara Little Danyo

1960 - \$420.00

Martina Mockaitis Martin
Dorothy Schniepp Stose
Madeline Henly Glass
Barbara Heaps Vitelli
Judith Ruebman Mearig
Sallie Lipan Callanen
Kathleen Manges Kleponis
Anne Runyan Medsger
Marjorie Haines Berleth
Judith Haas Stauffer
Sally Ann Giorgio Harris
Carolyn Ressler Goepfert
Joan Driscoll Kelley
Evonne Farris Taylor
Gini Longhitano
Nancy Taylor Ward

1961 - \$405.00

Ethel Faust Bazemore
Barbara Greenwalt Eichhorn
Clare Lynch
Susanne Willams Jacobson
Margaret Zarella
Marion Heilner McGarrey
Emily Lutz Hogan
Loretta Davis Cunninghamame
Patrica Caldwell Turnbull
Barbara Canal Obin
Barbara Borrell Fleishman
Ann Barron McBeth

Bettylou Simonson Woods
Jacquelin Elsesser Harris
Joyce Shaffer
Noreen Mostoller Shaffer
Patricia Lewis Truitt
Coni Sprow Abrams

1962 - \$535.00

Linda Linner Neveling
Marcie Grieshaber Moore
Patricia Thomas Goetz
Janice Panick Billick
Marian Choinski Pell
Carolee Swalm Mitchell
Joan Spece
Suzanne Rumberger Holden
Patricia Koder Daniels
Barbara Julius Brooks
Dolores Moyer Knepp
Rosemary Cashman Smith
Adelheid Korb Henson
Lee Chambers Hansell
Susan Eckerd Leake
Carol Frame Green
Marian Kraehling Hammond

1963 - \$605.00

Peggy Hannigan Bethanis
Dottie Fanelle Brown
Jean Allen McConnell
Miriam Smart Kramer
Mary Lou Keim McGinn
Margaret Ann Carr Hargrave
Myla Monillas Einwechter
Linda McKillip Ely
Doris Shoemaker Townsend
Donna Fletcher Adams
Ann Williams Fronduti
Terry Robson Cooke
Suzanne Vachei Blackburn
Mary Anne Dutt Vernallis
Dianne Abele Rehman
Mary Elizabeth Speicher Gillin
Margaret Turner Cannon
Loretta Rich Kurland

1964 - \$340.00

Isabelle Kroupa Erb
Barbara Nase Anderson
Patricia Gardner Marquette
Judith Welsko Lynn
Mary Lou Woerner Schubel
Roanne Axelson Heise
Beth Reed

Penelope Jones McAlees
Fay Shaffer Leslie
Barbara Lenker Tredick
Valerie M. O'Donnell
Barbara Hedenberg Narehood

1965 - \$650.00

Polly Lupo Reierson
Susan Wilhour Croom
Nancy Schraga
Judith Larson Moyse
Patricia Swann Baranowski
Catherine Materio Teti
Mary Bennett Rocheleau
Kay Farber Matejkovic
Judy Abbott Buzzell
Cassandra Starr Rogers
Sandra Schmidt Kolodziej
Karen Lynch Bayers
Barbara Ott Plamondon
Julia Connelly Flynn
Bonnie Sandt Inglis
Carolyn Widman Bohn
Lois Russell Foxen
Janet Walker Respass
Margaret Fischer McGroarty

1966 - \$515.00

Jean Lashinski Strelzik
Clare Marie Karabasz
Mary Lou Smith Lebsack
Barbara Shermer Ruehl
Mary Jo Oakley Fusaro
Judith Hagefgans Hoefle
Nancy Scull Brainard
Mary Korosec Kearney
Patricia Downey Houck
Judith Kennett Tracy
Carol DuCoin Moan
Suzanne Barclay Levine
Teresa Conboy Tule
Carol Denise Kolsky
Lenora Weiner Schwartz
Judith Kramen Seltzer

1967 - \$485.00

Verna McCafferty Walters
Eleanor Hollister Reinhardt
Linda Strege Jones
Rita Haedel Becchetti
Karen Lawer Bedell
Jacqueline Simons Alvarez
Sally Higham Fenlin
Linda Goodman

Jill Simpson Bower
Sheila Schwartz Rich
Amber Phillips Smith
Paula Laros Rich
Marilyn Ruble Scelba
Carol Siegrist Woodruff

1968 - \$450.00

Janet Ball Lyons
Catherine May Dirr
Bonnie Ingraham Siegrist
Ruth Montgomery Penta
Sandra Payne Kenton
Dr. Linda Meachum Scheetz
Elizabeth Masten Cahall
Mary Ann Taraskas Hammond
Kathleen Lugowski Schade
Shirley Dubis Poling
Mary Squires Getz
Lorie Crumlish Brown
Karen Barnum Kushto
Anne Vogel Clayton
Judith McCullough Backstrom

1969 - \$595.00

Hope Russo Schooley
Dolores T. Hughes
Freda Gansky Feldman
Nancy Nevin McClees
Marilyn Bergner
Annie Eldridge Kahn
Lizabeth Doddy Paxton
Beverly Jane Wallace
Kathleen Shanahan Huffman
Ruth Huff Iuliano
Barbara Bokal
Kristine Hancock Reede
Marlene Sovin Burgess
Carolyn Brown Merryman
Daveen Jones Edmiston
Linda M. Barbour
Joan Kuehner Munyon
Jean Hillerstrom Rakey
Vera Paoletti
Carole Schafer Kelley

1970 - \$245.00

Jo Moiso Valenti
Sandra Clark Hall
Christine Reed
Bonnie Schultz Cegles
Marge Connors Marchant
Alice Coligan Conte
Helen Sue Lin Hom Moore

Beverly Guise Cockerham
Gail Johnston Gallagher
Tricia Deal Gallagher

1971 - \$275.00

Elizabeth Gore Coughlan
Loretta Suber Heyduk
Eileen Kubiak Burgo
Grace A. Spena
Kathryn Van Dyke Hayes
Frances Boothby Koniers
Judy Jones
Eileen Blum Moran
Ruth Hoffman Pearson
Louise LaFleur Giese
Kathryn Francis Burgess

1972 - \$330.00

Christine Sachs McCann
Mary Webb Hulick
Mary Fisher Fish
Patricia Hancy Hemphill
Kathleen Konrad Battle
Linda Warminski Belinsky
Kathy Braucher Berkebile
Sandra Snider
Cheryl Baumgartner Meyer
Donna Monroe Phelps
Deborah Waters Payne

1973 - \$385.00

Christina Coleman Moore
Shelah Hoberman Lubert
Marjorie Lambert Gibson
Margaret Morthorst
Kate G. Felix
Catherine Aukerman Salvato
Wendy Carman
Elizabeth McGrory Berry
Mary Beth Henry
Susan Broadwater Franklin
Mary Ann Roddy Puglis
Genie Goldfarb Blaher
Karen Baals Jaxheimer
Jo Anne Bender

1974 - \$275.00

Debra Boyle-Borkowski
Barbara Graf
Wendie Hunt Burgess
Julie Jennings Fenimore
Ann Bennett Townsend
Jeanne Margraf Wagner

Jeanne Giardino Stanton
Maureen Kelly LeFevre
Nancy Hampton Hilkert
Suzanne Tomlinson Seckinger
Susan Sheaffer Cantwell
Wendy Obst Manganiello

1975 - \$ 275.00

Maryanne Bartoszek Scott
Susanne McCullough Hoffman
Patricia Dick Walsh
Carolann Dougherty Mashouf
Germaine Scott George
Donna Ranieri Ambrogi
Linda Bingaman Napieralski
Theresa O'Brien Funt

1976 - \$120.00

Sue-Sauzet Parini
Leslie May Tahsler
Mary Keller Mitchell
Janice Richmond Malloy
Kathy Ankenbrand Cochlin
Lynne Arnold Borden

1977 - \$235.00

Cheryl Kline
Karen Mulligan Robnett
Terry Mayne Colella
Betty Anne Beck Hedges
Susan Gallagher
Judith McClellan DeLucca
Darlene Ribaric Rosendale
Patricia Thompson Jenkins
Karen Richard Emerle
Patricia Pryor Canzio

1978 - \$430.00

Ernest Weatherly
Leslie Wilkinson Strickley
Deborah Jones
Sherry McNeal Yuras
Theresa Franzone Snell
Linda Heinold Muelenaer
Mary Ann Mallee Bowman
Regina Dreyer Klinger
Jan Stasché Vanderveer
Joan Wolbert Reimer
Diane Warden Carugno
Linda Parr Southwick
Susan Burrell Sawula
Carol Miller Muller
Alice Leisch Guarino

1979 - \$415.00

Theresa McGlynn Rupp
Elaine Harkins Lack
Sandra Lee Smith
Laurel Goldberg Gutter
Judith Cavuto Birle
Judy DiCristofaro Fyfe
Kathleen Kelley Carbone
Terri Schwartz Burditt
Cheryl Camillo Schrier
Jeanne Humphreville Leisner
Deborah Samuel Timpano
Sharon Miller Chilton
Margaret E. Cooley
Robin Flynn Butto
Carmen W. Russo
Karen Hollander Bernardini

1980 - \$235.00

Barbara Engel Kenny
Tamra Lucas Goldschmidt
Jeanne Bundens Rossiter
Marianne Maxwell Ostrow
Donna Kloss Weaver
Kathleen Carley Gregg
Susan Albrecht Curcio
Susan Sullivan
Sara Scheidt Sears
Mary Ann Mullen Ragone
Patricia Dwyer Cappello

1981 - \$135.00

Christine Kopistansky
Debra Graham McGarry
Terri Koch Martin
Susan Sheaffer Schwab

1982 - \$200.00

Terry Sylvester
Karen Tanner Frick
Theresa Heim Cook
Barbara Kominsky Leone
Francine Pollock Miller
Susan Keeley Blomgren

**Matching Grant Gifts
January 1, 1998 to August 15, 1998**

Mobil Foundation, Inc. - Mariea Buffum Hunter '47
Rhoda A.M. Burg Weisz '42
Exxon Education Foundation - Helyn Long Romberg '37
Abbott Laboratories Fund - Joan Spece '62
Smith Kline Beecham Foundation - Jean Flanagan Ryan '52

Memorial Gifts

Evelyn Rolland Curran '35 - donors Jane Hawk Aires '51, Constance Sierant Vetter '57, Peggy Summers '41, Betty Piersol '34, friends
Thelma Showers Morris '32 - donors Jean Fishel Carter '45, Ruth E. Ent, friends
Margaret Cossman '47 - donor La Dean Beattie Kramp '47, classmate
Catherine Prendergast '47 - donor LaDean Beattie Kramp '47, classmate
Madge Trambley Abel '44 - donor La Dean Beattie Kramp '47, friend
Mary Meenahan Trueheart '44 - donor Vivian Frankenfield Cragg '44, classmate
Doris Bowman '42 - donors Betty Piersol '34, Peggy Summers '41, friends
Ruth Cornell Williams '33 - donors Verna R. Long, friend, Sara J. Wuchinich, sister-in-law, Dr. and Mrs. Richard Monihan, Jack C. Sheppard, friends, Cynthia C. Walsh, and Cumberland Orthopedic Staff, friends, The Family Birth Center of St. Clair Hospital, friends, Ann Williams Fronduti '63, daughter
Ruth Zoll Essig '41 - donor Frances Huston Rumberger '41, classmate
Perma Ehrhart Davis '41 - donor Frances Huston Rumberger '41, classmate
Louise Williams Dunn '58 - donor The Family Birth Center Staff of St. Clair Hospital, friends, Ann Williams Fronduti '63, sister
Darlene Stout Bleile '56 - donor Col. Arlean V. Miller '47, friend, Melissa Wilson, daughter, Paul Bleile, son
Barbara Brown Breen '49 - donor James Breen, husband
Paul C. Schroy, M.D. - Shirley Schroy Hersey, '46, sister
Carol Craven Conover, '75 - donor Janet E. Moore '75, classmate
Janet Hindson '50 - donors Mary Ellen VanHorn, friend, Jean Hohe Larkin '50, classmate, Mr. and Mrs. Thomas Royer, Employees of Bemis Co., friends, Barbara J. Talarovich, Millie Kost, Irene Pollock Kemchinsky, Dolores Schutz Job, James Deitos, George Burzner, Dorothy Digon, Helen Wysocki, Margaret Feno, High School Classmates, Elinor Dumproff, Alan Lawrence, Beverly Beaudry, Joan Orłowski, Sandra Payne Kenton '68, friends, Sally and John Wagner, sister and brother-in-law
Evelyn Wilson Frazier '34 - donor Betty Piersol '34, classmate
In memory of deceased classmates - donors August section, class of 1948

Betty Piersol
Chair, Development Committee

Nominating

Four of the current Board members agreed to serve for another 4 year term. This was suggested so that all Officers and Board members are not elected the same year.

The four current Board members were re-elected by a unanimous voice vote.

Jane Ryan Dietrich, '59
Paula Levine, '68
Lorraine Milewski McCall, '49
Jeanette Plasterer, '51

Vera Paoletti
Chair, Nominating Committee

The Annual Luncheon



In Memoriam

- | | |
|---------------------------------|---------------------------------|
| 1916 Frances E. Butler Pangburn | 1937 Kathryn Adams Lindemann |
| 1920 Estelle Lewdrop Fleming | 1938 Lida C. Pardee Goodell |
| 1926 Mayda Fruehan Maxwell | 1939 Kathryn Nolte Lilley |
| 1927 Frances Baker Crossan | 1939 Ruth Schlemme Green |
| 1928 Frances Pierson Woolf | 1940 Eva Fedock Swantko |
| 1930 Thelma A. Fesmier Edson | 1940 Dorothy Cohick Rosenberg |
| 1930 E. Isabel Oaks Widing | 1942 Sylvia E. Hendrickson |
| 1931 Blanche Ford | 1942 Doris E. Bowman |
| 1931 Minnie Bartash, (WH) | 1943 Theo Machen Peterson |
| 1932 Carolyn Jones Transue | 1943 Vivian I. Moyer |
| 1932 Thelma M. Showers Morris | 1944 Mary Meenahan Trueheart |
| 1933 Ruth Cornell Williams | 1946 Elizabeth A. Nissler Black |
| 1933 Margaret Duncan Moscarella | 1947 Josephine Sokodinsky Laird |
| 1934 Elma C. Carey Frampton | 1948 Gloria J. Loyd Werner |
| 1934 Eva M. Ingraham Grenoble | 1948 Norma R. Wandall Board |
| 1934 Evelyn M. Wilson Frazier | 1949 Barbara M. Brown Breen |
| 1934 Angela R. Cozza, (WH) | 1950 Janet C. Hindson |
| 1935 Evelyn M. Rolland Curran | 1950 Shirley M. Mackley Hoffert |
| 1935 Geraldine M. Hyde Powers | 1952 Jane E. Beard Maxwell |
| 1935 Mary Coles Moore | 1958 Darlene Stoudt Bleile |
| 1935 Flora A. Keat | 1961 Adrienne Gryczko Boyle |
| 1935 Arlene Martin Walther | 1981 Francine T. Crane |

Bits of Heaven

Spring brings a bit of Heaven
To resurrected earth,
For everywhere the eye can see
Are signs of bright rebirth.

Arising from their graves of ice,
The crocuses lift their heads...
And all around the countryside
Are lovely flower beds.

The barren trees of Winter
Are filled with buds today,
As the birds return rejoicing
From their winter holiday.

The snowflakes of December
Are April memories,
Caressed by southern breezes
And sun-kissed melodies.

The doubts and fears of Winter
Give way to joy and mirth
For Spring brings bits of heaven
To resurrected earth!

Clay Harrison

The Clara Melville-Adele Lewis Scholarship Fund
of the Alumni Association of the
School of Nursing (Diploma Program)
College of Health Professions
Thomas Jefferson University
 215-955-8981

APPLICATION FOR ASSISTANCE WITH CERTIFICATION COSTS

1. Name: _____
(Last Name) (First Name) (Middle Initial) (Maiden Name)

2. Address: _____
(Number and Street) (City and State) (Zip Code)

3. Year of Graduation: _____ Social Security Number: _____ Telephone Number: _____

4. I applied and have been accepted to sit for Certification (), Recertification () examination in the following specialty:

Name _____ Date _____

5. Costs Incurred:

Application Fee: _____

Examination Fee: _____

Study Materials: _____

Transportation: _____

(If examination is not in your area.)

Motel/hotel Costs: _____

Total Cost: _____

6. Financial assistance available to you: (state amount)

Work reimbursement _____ Other _____

7. Are you a member of the Alumni Association? _____

8. Plans for your future professional career: _____

Signature _____ Date _____

Things to Know

- Experience is yesterdays answer to a problem.
- You can meet friends everywhere but you cannot meet enemies any where - you have to make them.
 - Footprint in the sands of time are never made by sitting down.
 - The straight and narrow path would not be so narrow if more people walked it.
 - Faults are the easiest things to find.
 - It is better to say "thank you" and not mean it, than to mean it and not say it.
- A lot of good could be accomplished in this world if nobody cared who got the credit.
 - Reaching high keeps a man on hi toes.
 - No one hates a job well done.

Application for Certification

Purpose: To assist members of the Alumni Association to meet the costs of certification in a nursing specialty.

Requirements:

- Alumni of the Diploma Nursing Program of Thomas Jefferson University.
- Membership in the Alumni Association preferred.
- At least two-years' experience in the nursing specialty requested.
- Application and acceptance by organization offering certification examination.

Awards:

Monies will be granted to applicants who meet the requirements.

Application Procedure:

Applications are available from the Chairperson, Scholarship Committee or the Jefferson Nurses Alumni Association:

School of Nursing Alumni Association
Thomas Jefferson University
130 South 9th Street, Suite 702
Philadelphia, Pennsylvania 19107-5233
Telephone (215) 955-8981

Submit application at least four (4) weeks prior to the regularly scheduled meeting of the Alumni Association (second Tuesday of September, November, January, March and the annual meeting in May.)

Each application is given careful consideration and considered on a first come, first served basis.

Nurses Alumni Association • School of Nursing College of Health Professions • Thomas Jefferson University Philadelphia, PA 19107 • (215) 955-8981

APPLICATION FOR RELIEF FUND BENEFITS

APPLICANT DATA

Name _____ Maiden Name _____ Year Graduated _____

Address _____
STREET CITY STATE ZIP

Social Security Number _____ Telephone () _____

Have you received Alumni benefits before Yes, Date _____ No _____

List your specific needs _____

Include the reason for this request _____

TYPE OF MEMBERSHIP

- LIFE
ACTIVE

Signature _____ Date _____
APPLICANT OR REPRESENTATIVE

Relationship to Applicant _____

Address _____
STREET CITY STATE ZIP

ATTENDING PHYSICIAN STATEMENT

Patient's Name _____

Diagnosis (If injury, give date of accident) _____

Date first consulted for this illness _____ Length of illness _____

If patient hospitalized: name of hospital _____

If patient in nursing home or extended care facility: _____
From DATE To DATE

Name of Facility _____

Address of Facility _____

Physician's Signature _____ Degree _____

Address _____ Telephone _____
STREET CITY STATE ZIP

AUTHORIZATION

I hereby authorize the above named physician to release any, and all information requested by the Jefferson Nurses Alumni Association with respect to this claim for Relief Fund Benefits.

Signature _____ Date _____
APPLICANT OR REPRESENTATIVE

Relationship to Applicant _____

IMPORTANT: READ REVERSE SIDE OF THIS FORM

To Be Eligible For Relief Fund Benefits

1. Membership in the Association for one year preferred. However, all requests will be given consideration. All things being equal, members will be given first consideration.

The Following Are Entirely Excluded:

1. Pregnancy and its complications
2. Cosmetic surgery
3. Dental surgery and/or complications.

How to Apply For Relief Fund Benefits

1. Complete your part (the top portion) of the Benefit Form and sign the authorization at the bottom.
2. Have your physician complete his or her part of the Benefit Form.
3. If the Alumni member cannot complete the Benefit Form, the person submitting the form must show his or her relationship to the member when signing and give address and telephone number.
4. The complete Benefit Form should be sent to:

Chairman, Relief Fund Trust Committee
 Jefferson Nurses Alumni Association
 Thomas Jefferson University
 130 South 9th Street, Suite 702
 Philadelphia, PA 19107-5233
 Telephone (215) 955-8981

All information is confidential

All Relief Fund requests will be considered by the Board of Directors of the Nurses Alumni Association for the amount of monies granted.

The Clara Melville-Adele Lewis Scholarship Fund of the Alumni Association of the School of Nursing (Diploma Program) College of Health Professions Thomas Jefferson University 215-955-8981

SCHOLARSHIP APPLICATION

1. Name: _____
(Last Name) (First Name) (Middle Initial) (Maiden Name)
 2. Address: _____
(Number and Street) (City and State) (Zip Code)
 3. Date of Graduation: _____ Social Security #: _____ Telephone #: _____
 4. Letter of acceptance from the University or College you plan to attend.
 5. Positions held. Arrange in sequence, listing present or last position first.

<u>Title of Position</u>	<u>Name of Employer</u>	<u>Address</u>	<u>Dates of Employment</u>
_____	_____	_____	_____
 6. Are you a member of the Alumni Association? _____ ANA? _____ NLN? _____ Other? _____
 7. List your activities in professional organizations.
 8. Proposed program of study and plans for your future professional career:
 School enrolled in _____
 Address of School _____
 Tuition cost Total _____ Per credit _____
 Additional expenses Books _____ Fees _____ Other _____
 9. Available financial assistance (amounts)
 Scholarships _____ Loans _____ Work Reimbursement _____
 10. Have you received scholarship money from the Alumni in the past? _____ If yes, amount _____ Dates _____
 11. Number of credits this semester _____
- Signature _____ Date _____

(for additional space, use back of this form)

Revised March 1998
 June 1994
 November 1987
 March 1984
 October 1976

Nurses Scholarship Fund

Purpose: To assist members of the Alumni Association in the preparation for a degree in nursing.

General Requirements:

Membership in the Alumni Association (preferred).

At least one year of professional experience as a registered nurse.

Enrollment full-time, or part-time in an accredited program, leading to a baccalaureate or higher degree in nursing.

Letter of acceptance from the University or College you plan to attend.

A close relative (daughter, son, granddaughter/son, niece or nephew) of a graduate of the Diploma Program planning to attend Jefferson's Nursing Program could be eligible to receive a scholarship, provided all requirements are met.

Awards: All things being equal, preference will be given to those who have most nearly completed degree requirements.

An application for Scholarship Funds is required for each semester.

Application Procedure:

Applications are available from the Nurses Alumni Office or the Chairperson, Scholarship Committee:

School of Nursing Alumni Association
Thomas Jefferson University
130 South 9th Street, Suite 702
Philadelphia, PA 19107-5233
Telephone (215) 955-8981

Submit all applications at least forty five (45) days prior to the regularly scheduled meetings of the Alumni Association (second Tuesday of September, November, January, March and the annual meeting in May).

Include the name and address of the person or school to whom the scholarship check is to be sent.

Each application is given careful consideration on a first come, first served basis.

Revised March 1998
June 1994
November 1987
March 1984
Spring 1982
Spring 1978
Fall 1977
Fall 1976

Pins

Jefferson pins may be purchased from J.E. Caldwell and Company, Chestnut and Juniper Streets, Philadelphia, PA 19107 (graduates prior to 1969) and from Neal Abrams, Inc., 740 Sansom Street, Philadelphia, PA 19106 (graduates 1969 and after).

Identification may be obtained by directing correspondence to the Director, Student Affairs and Services, College of Health Professions, Thomas Jefferson University, 130 South 9th Street, Suite 709, Philadelphia, PA 19107-5233. Telephone (215) 503-8189.

Transcripts

All requests for transcripts must be submitted in writing to the University Office of the Registrar, Thomas Jefferson University, 1015 Walnut Street, Suite G-22, Philadelphia, PA 19107-5099. Telephone (215) 503-8894. Requests should be submitted at least a month prior to the date needed, giving the name and address of the institution to which you want them sent. There is a \$5.00 fee for each transcript. Checks should be made payable to Thomas Jefferson University.

Class Address Lists

Class lists are available from the Alumni Office Coordinators at a charge of \$2.00 per list. If you write to the Alumni Association, use your first name, maiden name, married name, and year graduated. Make checks payable to Jefferson Nurses Alumni Association.

Please notify the Alumni Office Coordinators of any corrections, marriages, deaths or changes of address. Help us keep errors at a minimum and our files accurate. Direct correspondence to: Jefferson Nurses Alumni Association, Thomas Jefferson University, 130 South 9th Street, Suite 702, Philadelphia, PA 19107-5233, Telephone (215) 955-8981.

Alumni Identification Card

To replace a lost Alumni Identification Card write to Dottie Grieb, Director of Alumni Relations, 130 South 9th Street, Suite 703, Philadelphia, PA 19107-5233. Telephone (215) 503-7709 and request a replacement. Replacement charge \$10.00.

Change of Address Form

Present Name _____ Spouse's Name _____

Name When Graduated _____ Year _____

Former Address _____

New Address _____

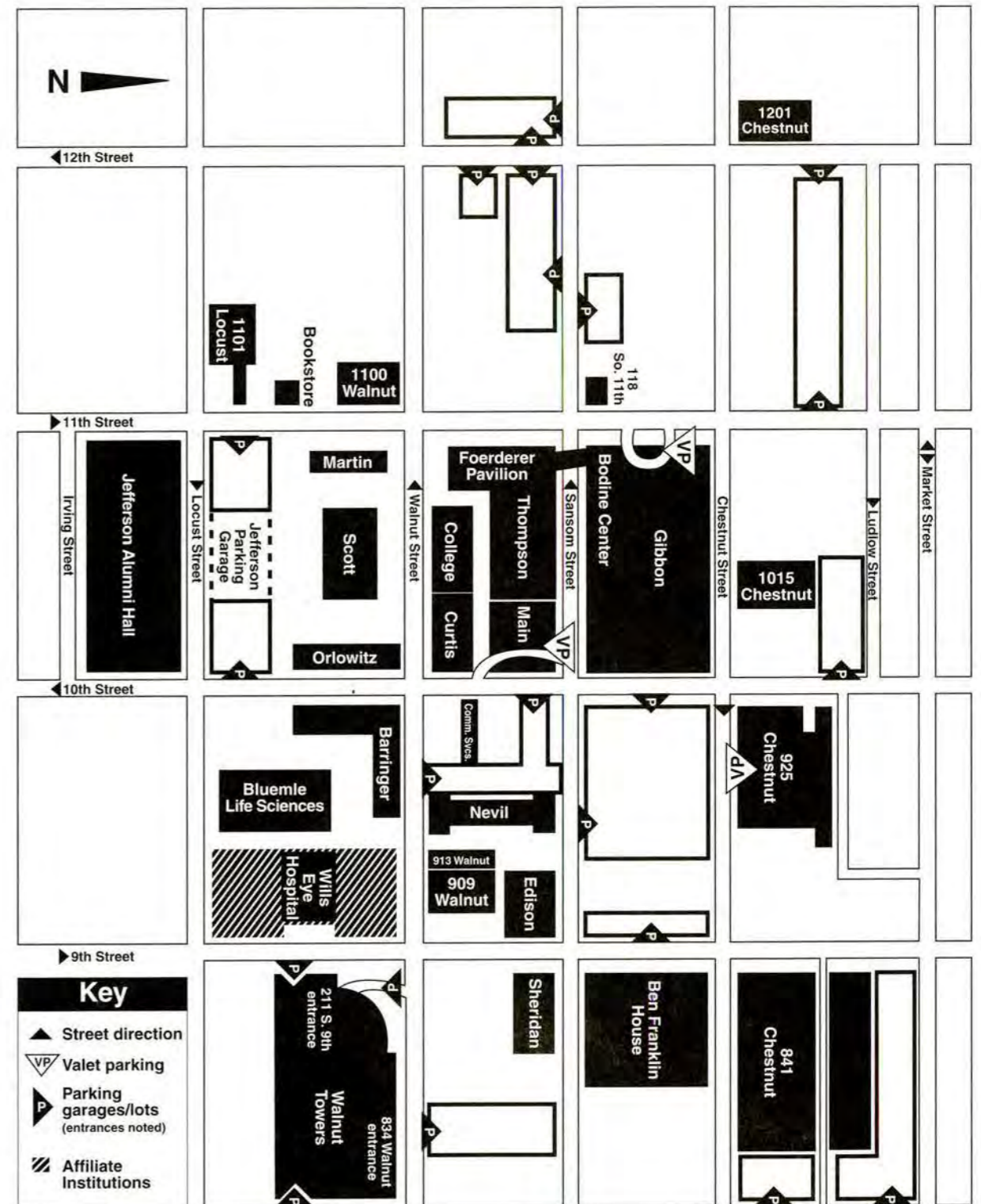
Present Phone Number (Area Code) _____

Present Position _____

Personal News _____

Mail to: Jefferson Nurses Alumni Association, Thomas Jefferson University, 130 South 9th Street, Suite 702, Philadelphia, PA 19107-5233, Telephone (215) 955-8981.

Campus Map



MUG 98.2389.2

*Jefferson Nurses Alumni Association
Philadelphia, PA*

Dear Alumni,

Regular meetings of the Alumni Association will be held on the following dates:

September 8, 1998

March 9, 1999

November 10, 1998

May 1, 1999 (Annual Meeting)

January 12, 1999

The September, November, January and March Meetings will be held in Room 719, Edison Building, 130 South 9th Street, Philadelphia, at 5:00 PM.

Annual meeting will be held in Solis-Cohen Auditorium, Jeff Hall, 1020 Locust Street, Philadelphia, PA at 10:00 AM.

This is the only notice you will receive.

Elizabeth Greenlee, Treasurer

*Notice
Annual Luncheon & Meeting Dates
May 1, 1999*

Social Hour: 11:30 A.M.

Luncheon: 12:30 P.M.

Jefferson Alumni Hall

1020 Locust Street

Philadelphia, PA 19107

Annual Meeting: 10:00 A.M.

Solis-Cohen Auditorium

Jefferson Alumni Hall

Jefferson Nurses

Alumni Association

130 South 9th Street

Suite 702

Philadelphia, PA 19107-5233

(215) 955-8981

Fall Social

November 14, 1998 • 12:30 P.M. - 5:00 P.M.

Faculty Club • Jefferson Alumni Hall

**Jefferson Nurses
Alumni Association**

Thomas Jefferson University
130 South 9th Street, Suite 702
Philadelphia, PA 19107-5233
(215) 955-8981

Nonprofit Org.
U.S. POSTAGE

PAID

Philadelphia, PA
Permit No. 276

