

Supplementary data for article:

Vujisić, L. V.; Makarov, S. E.; Curcic, B. P. M.; Ilic, B. S.; Tešević, V.; Gođevac, D.; Vučković, I. M.; Curcic, S. B.; Mitić, B. M. Composition of the Defensive Secretion in Three Species of European Millipedes. *Journal of Chemical Ecology* **2011**, *37* (12), 1358–1364.

<https://doi.org/10.1007/s10886-011-0040-3>

# 2887 Journal of Chemical Ecology

## SUPPLEMENTARY INFORMATION

### COMPOSITION OF THE DEFENSIVE SECRETION IN THREE EUROPEAN MILLIPEDES (DIPLOPODA, JULIDA, JULIDAE)

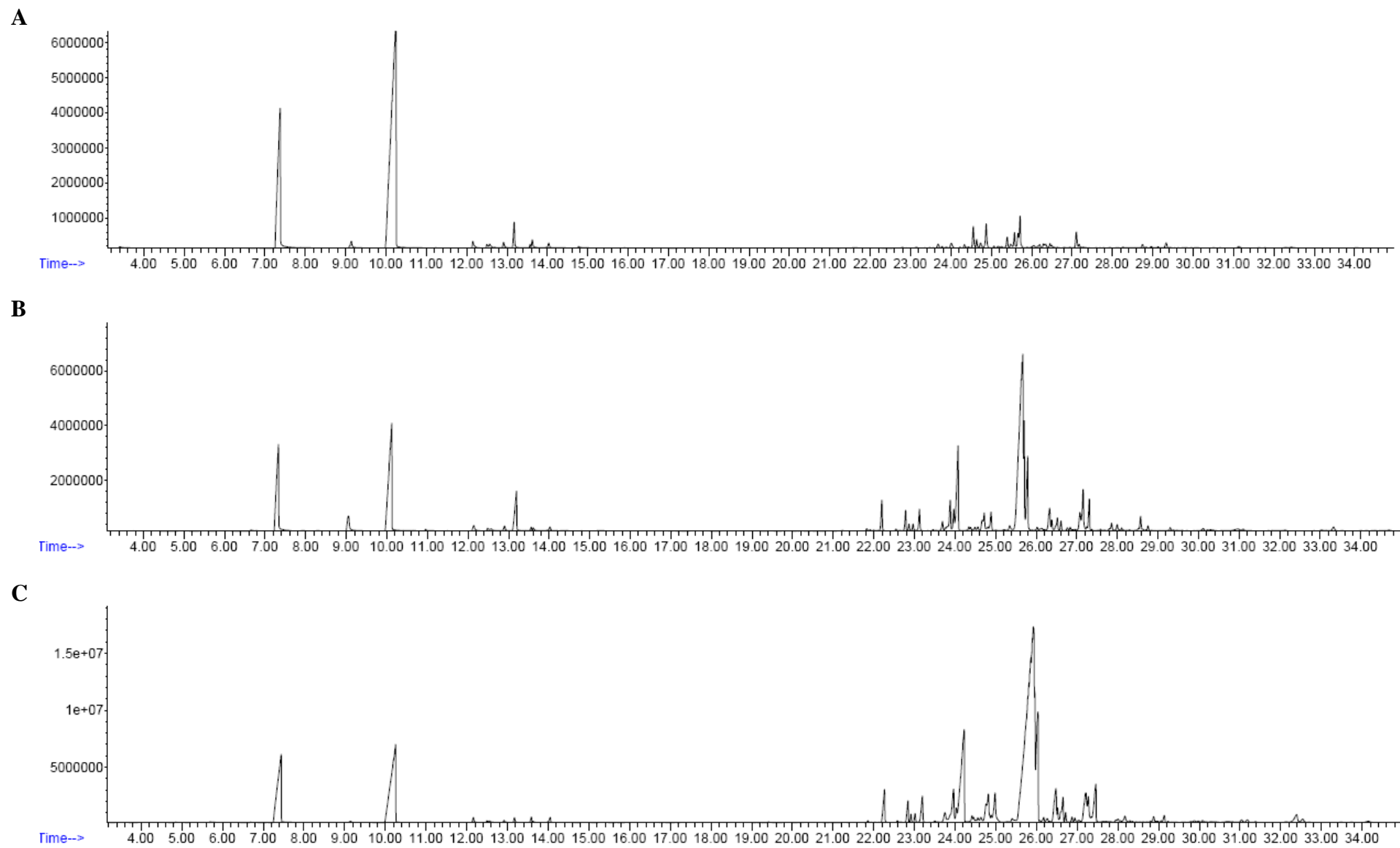
Ljubodrag V. Vujisić, Slobodan E. Makarov\*, Božidar P. M. Ćurčić, Bojan S. Ilić, Vele V. Tešević,  
Dejan M. Gođevac, Ivan M. Vučković, Srećko B. Ćurčić, And Bojan M. Mitić

\*Corresponding author

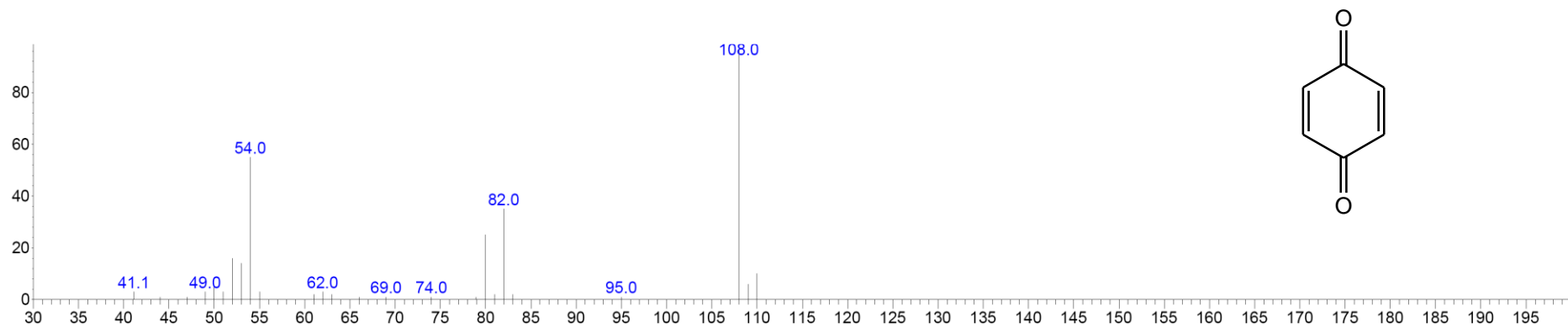
Institute of Zoology, Faculty of Biology, University of Belgrade, Studentski trg 16

11000 Belgrade, Serbia

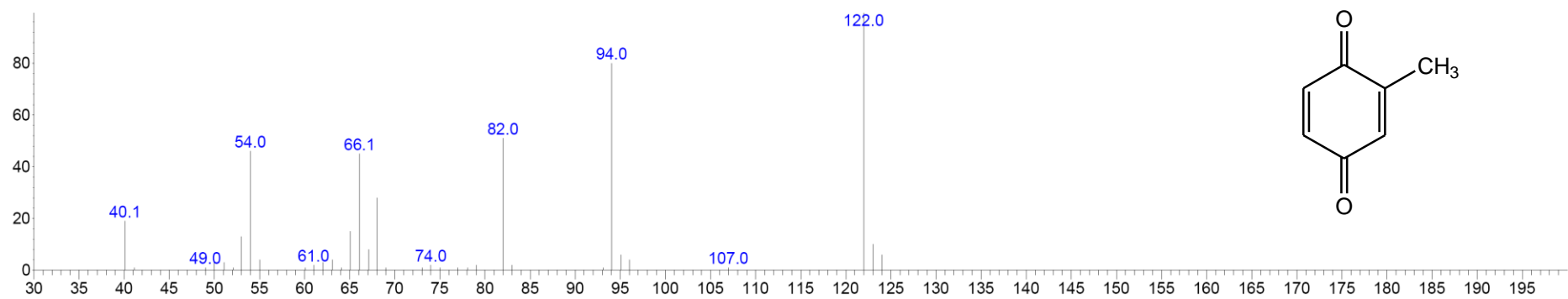
e-mail: slobodan@bio.bg.ac.rs; tel.: + 381 11 2187 266; Fax: + 381 11 2638 500



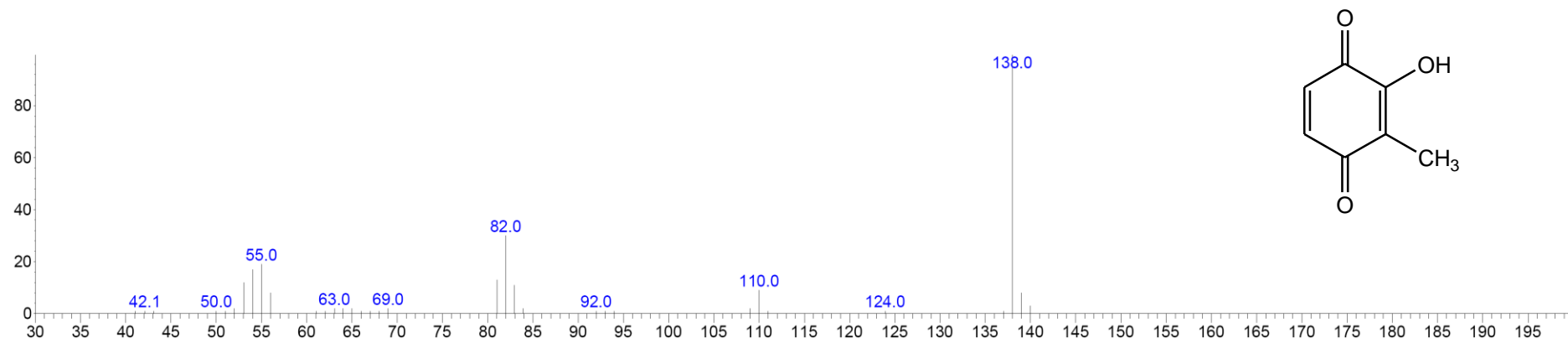
**Figure S1.** GC-FID chromatograms of whole body extracts in DCM of julid millipede species: *Cylindroiulus boleti* (A), *Leptoiulus trilineatus* (B), *Megaphyllum bosniense* (C).



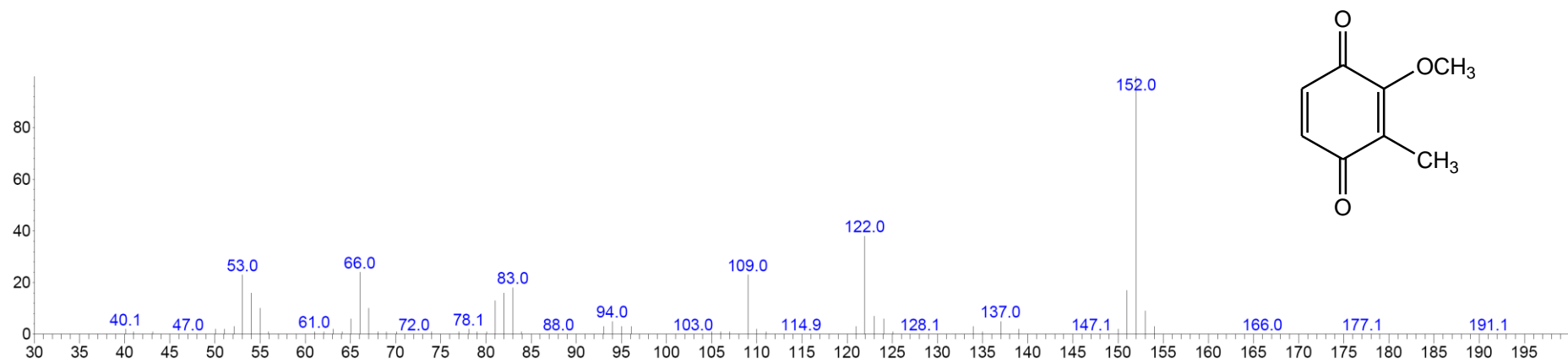
**Figure S2.** EI MS spectrum of compound I



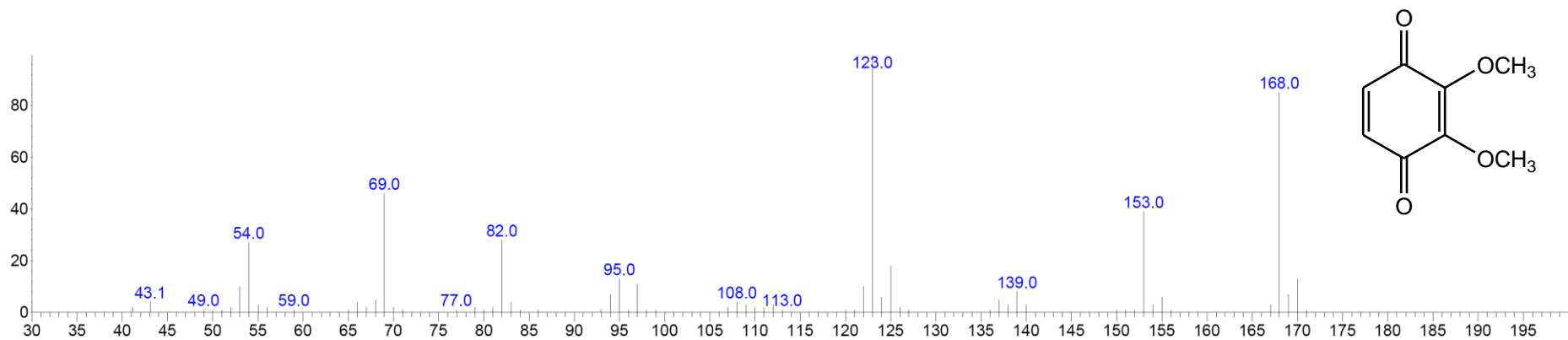
**Figure S3.** EI MS spectrum of compound II.



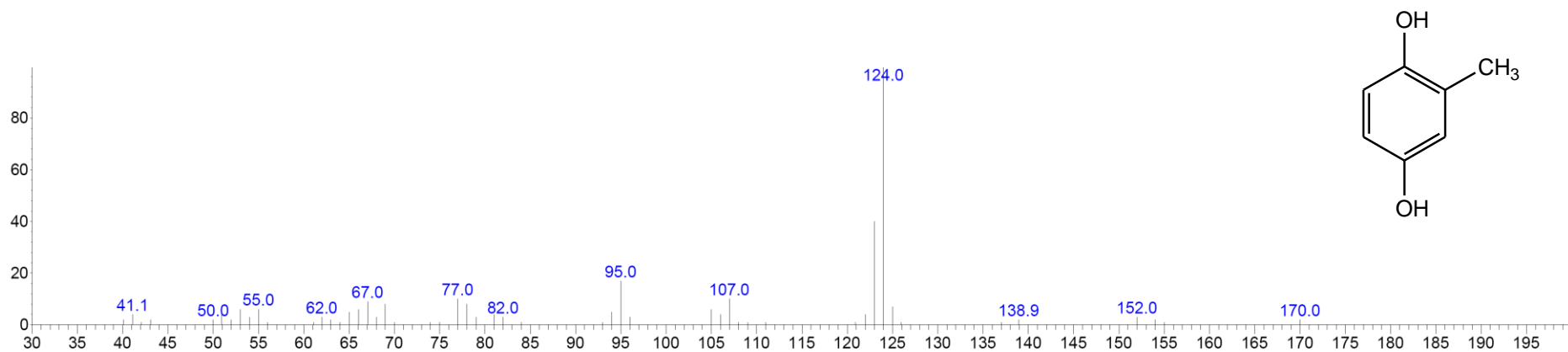
**Figure S4.** EI MS spectrum of compound III.



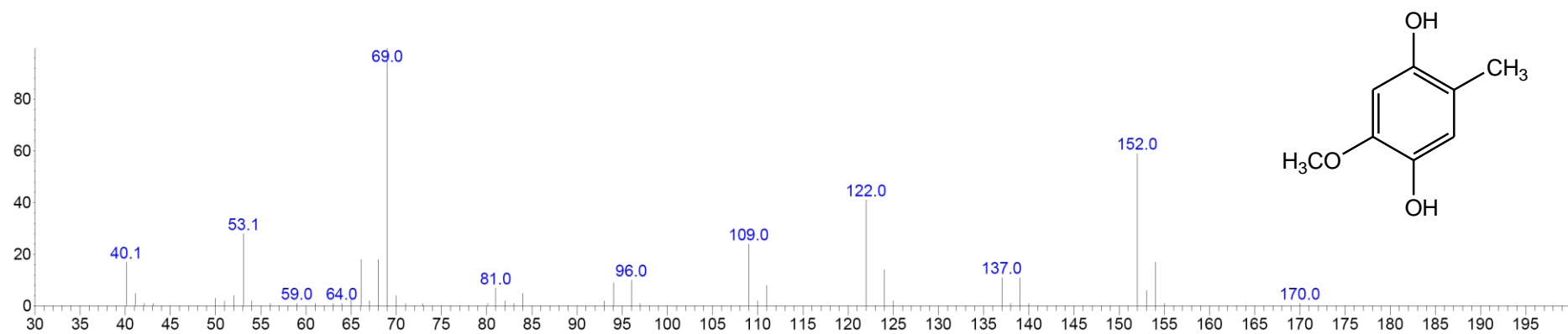
**Figure S5.** EI MS spectrum of compound IV.



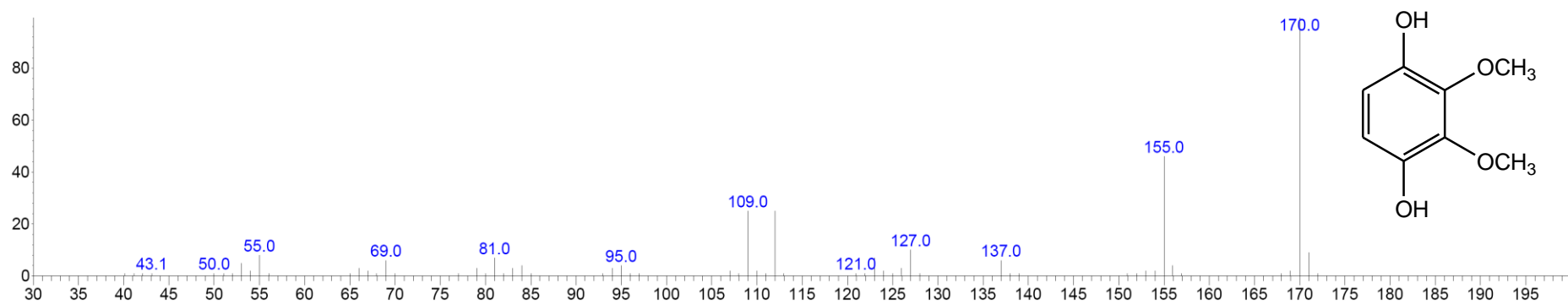
**Figure S6.** EI MS spectrum of compound V.



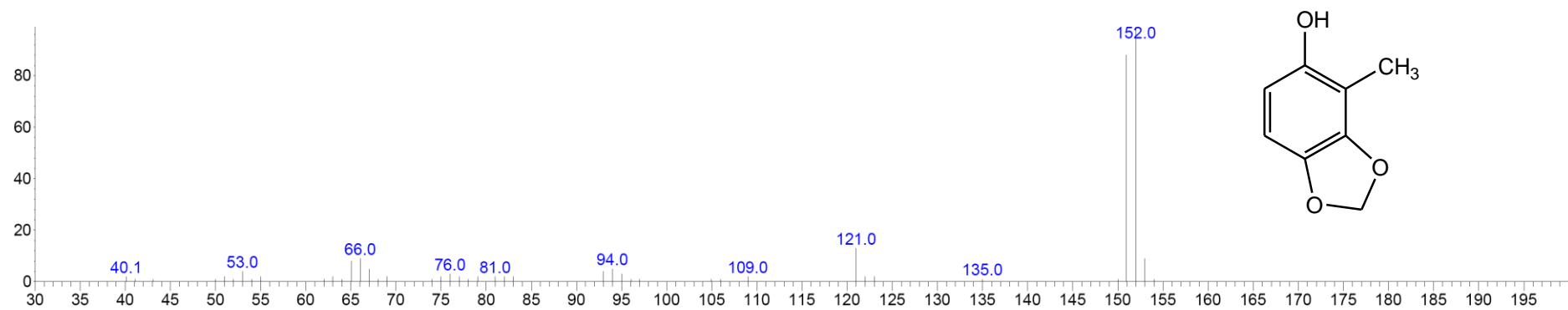
**Figure S7.** EI MS spectrum of compound VI.



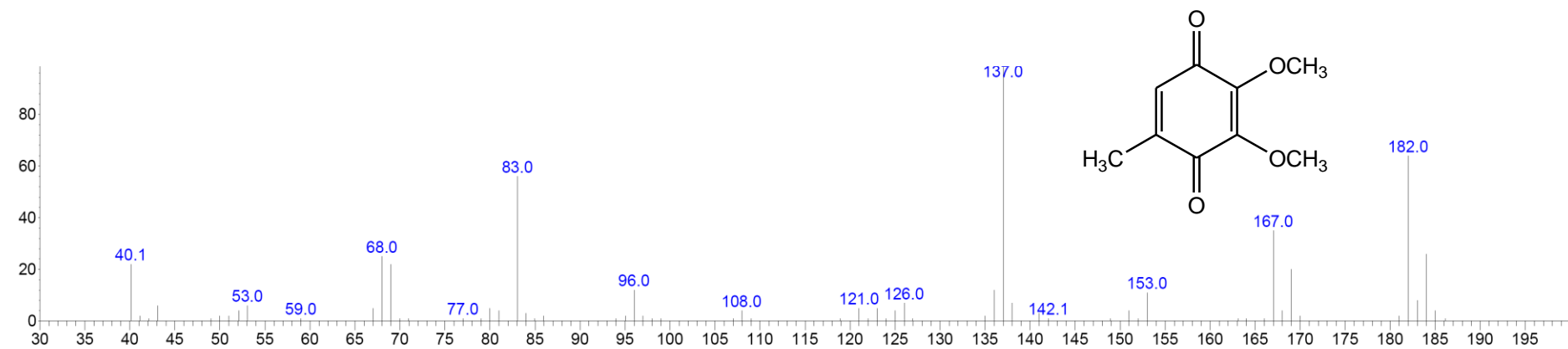
**Figure S8.** EI MS spectrum of compound VII.



**Figure S9.** EI MS spectrum of compound VIII.



**Figure S10.** EI MS spectrum of compound IX.



**Figure S11.** EI MS spectrum of compound X.



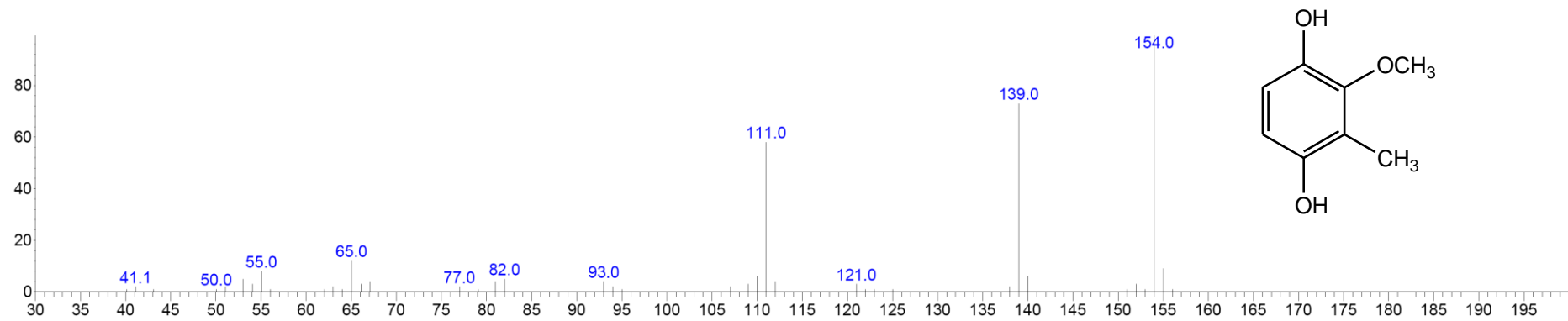


Figure S12. EI MS spectrum of compound XI.

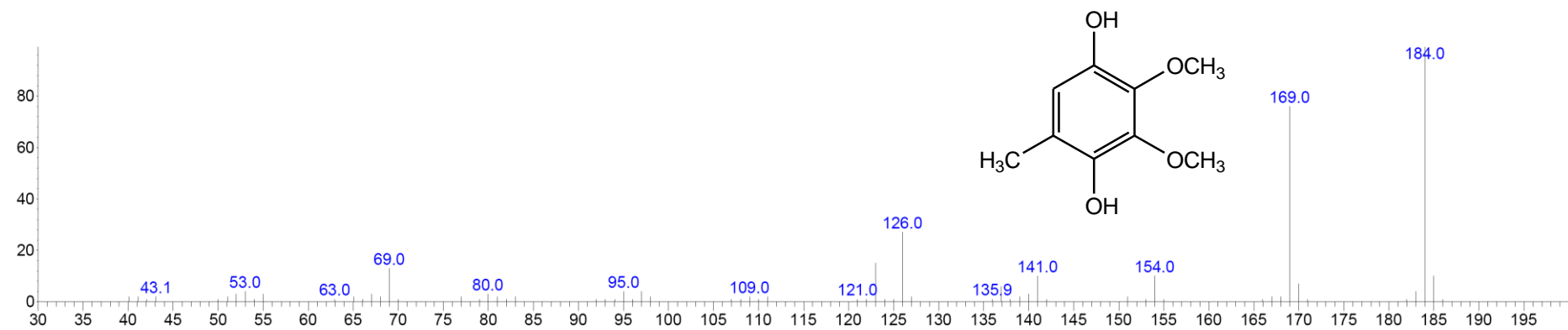
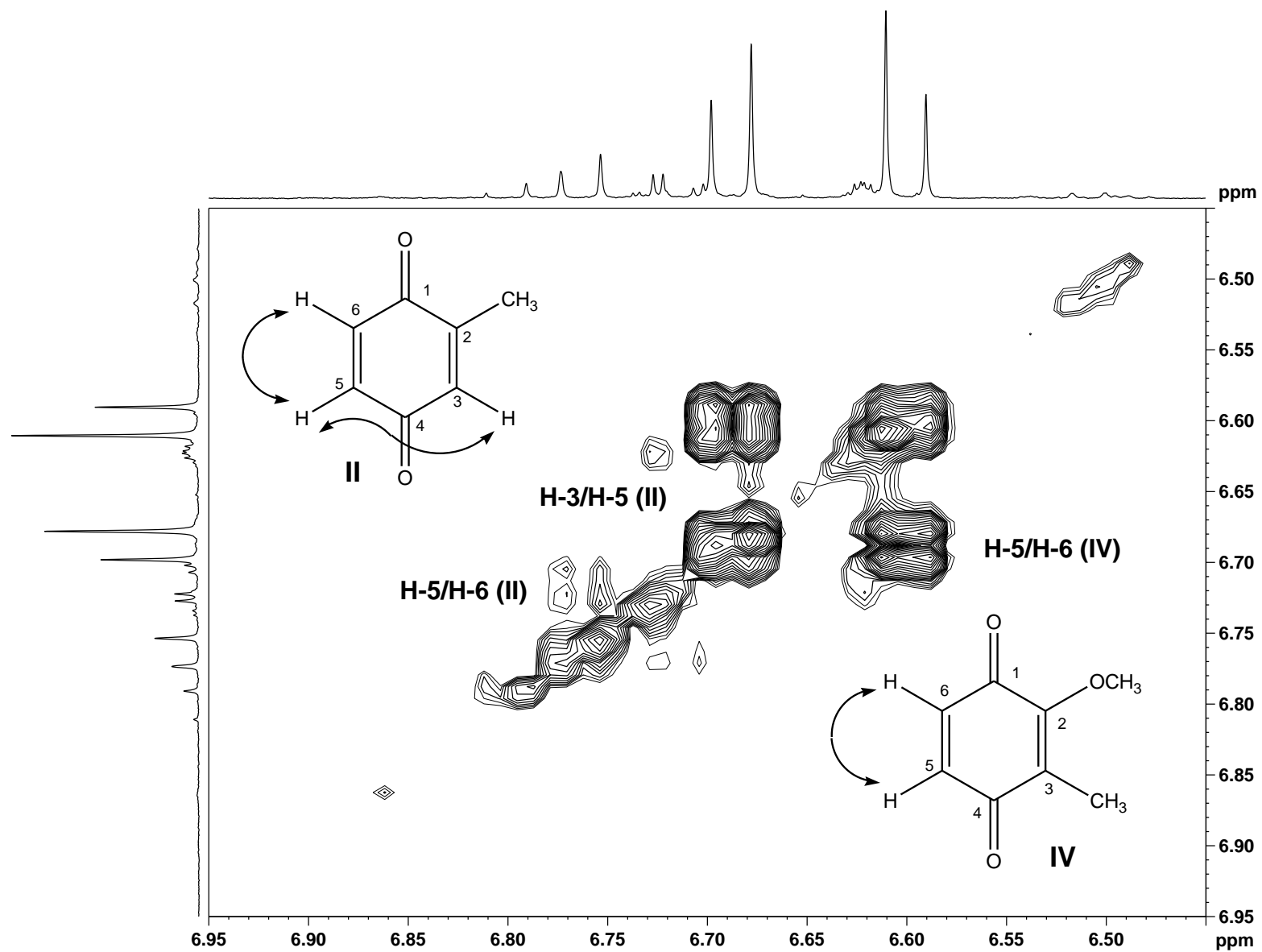
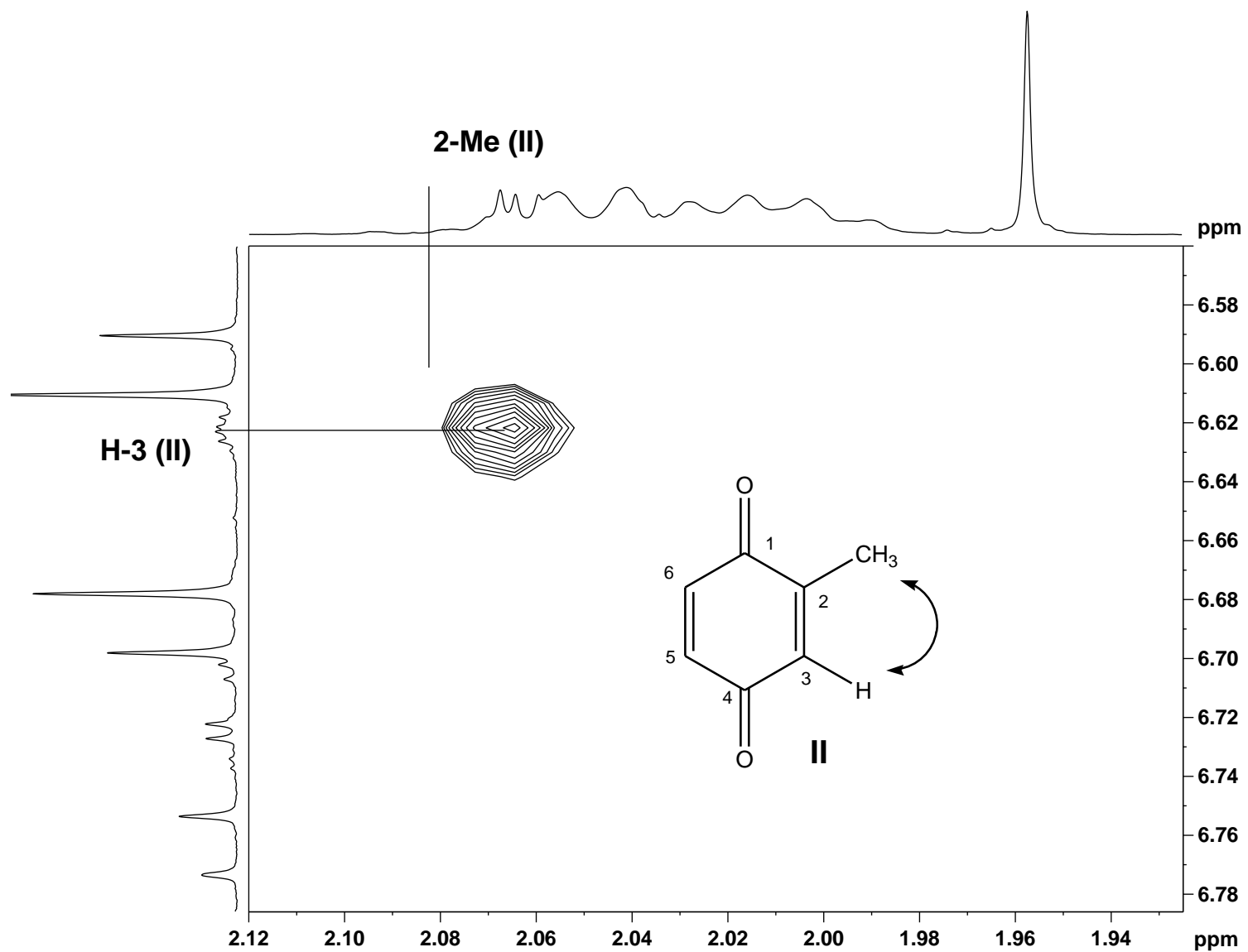


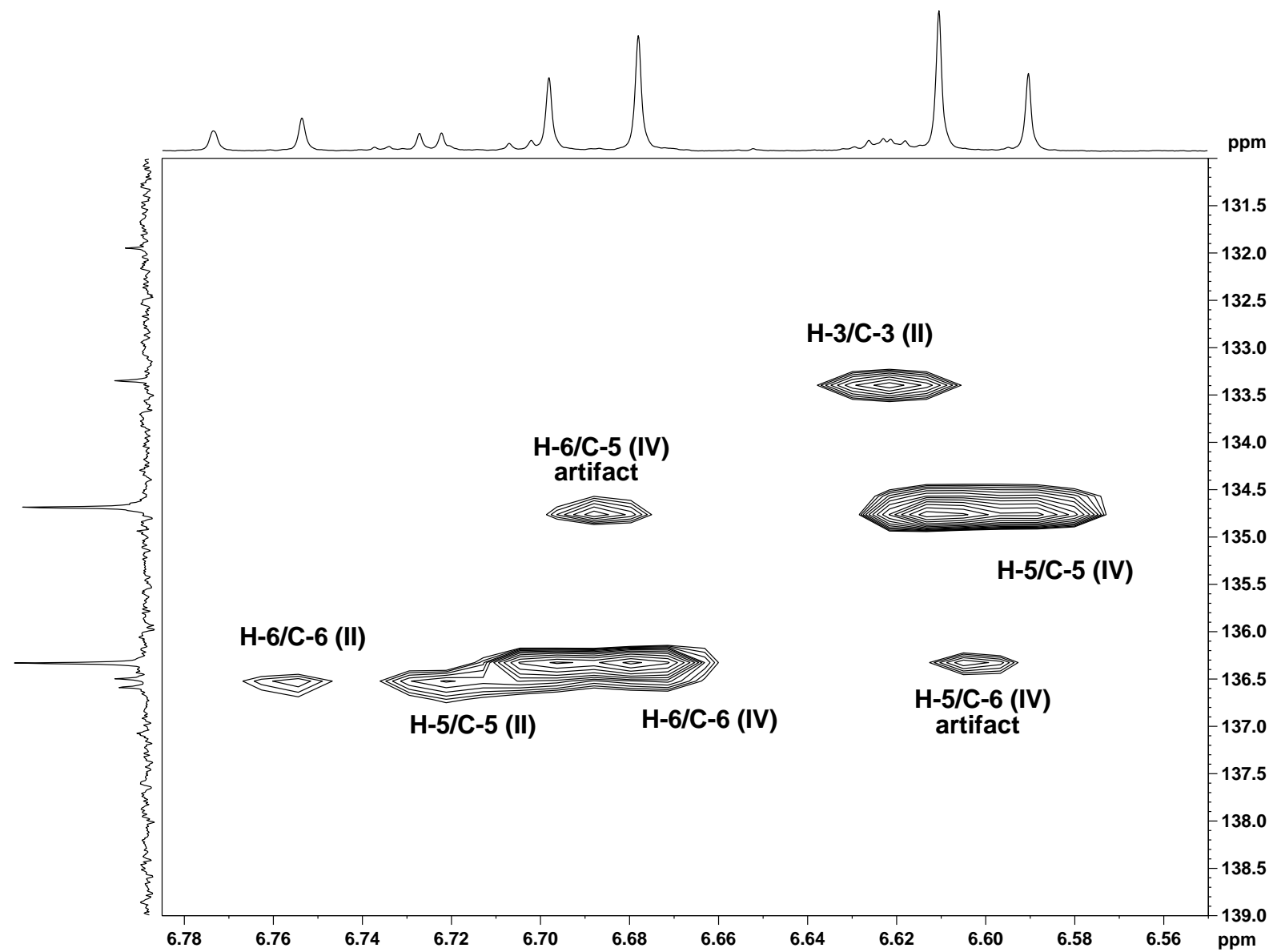
Figure S13. EI MS spectrum of compound XII.



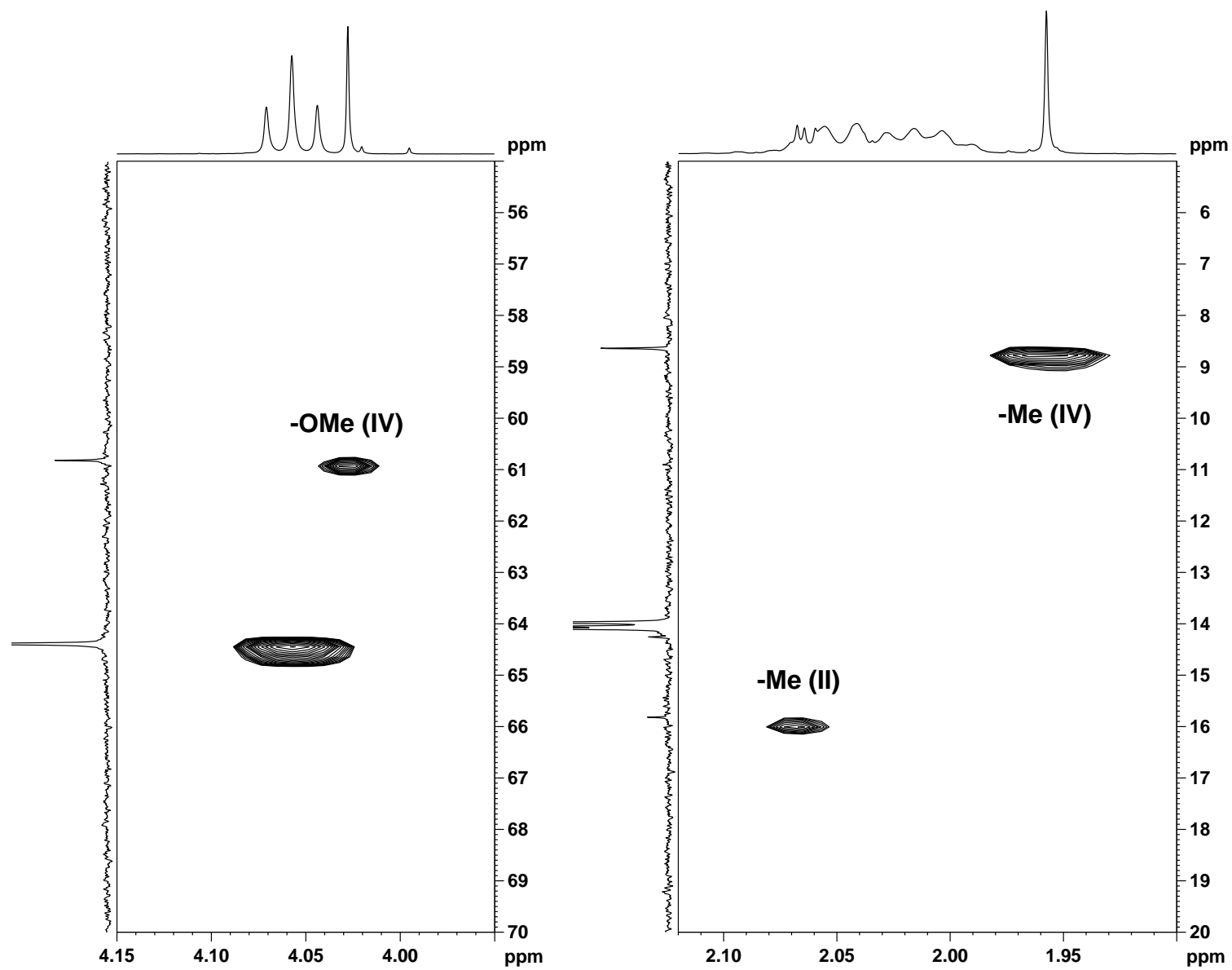
**Figure S14.** Expansion of COSY spectrum of DCM extract of *M. bosniense*: correlations of aromatic protons of compounds **II** and **IV**.



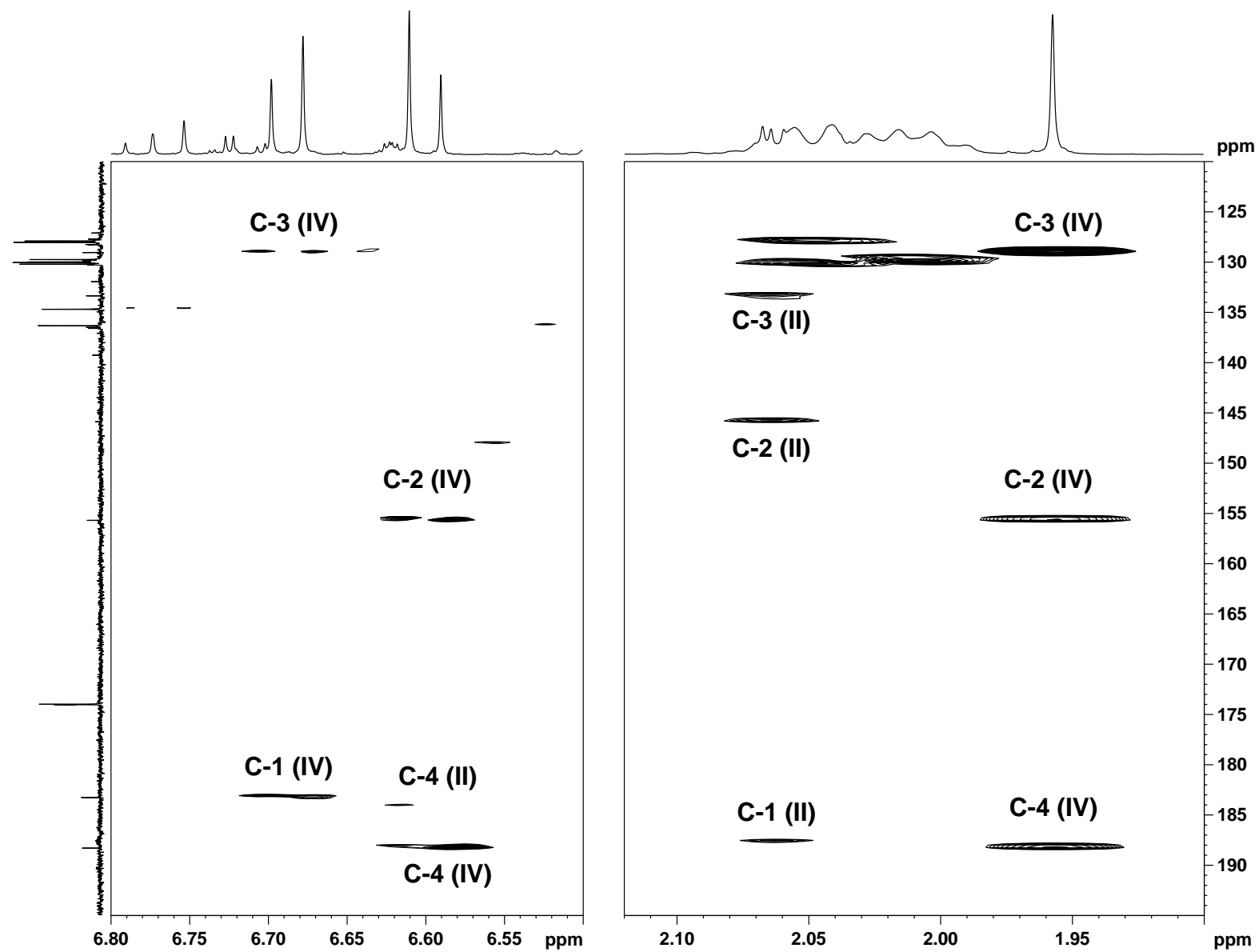
**Figure S15.** Expansion of COSY spectrum of DCM extract of *M. bosniense*: correlation of -CH<sub>3</sub> and H-3 of compound **II**.



**Figure S16.** Expansion of HSQC spectrum of DCM extract of *M. bosniense*: aromatic H/C correlations of compounds **II** and **IV**.



**Figure S17.** Expansions of HSQC spectrum of DCM extract of *M. bosniense*: -OCH<sub>3</sub> and -CH<sub>3</sub> correlations of compounds **II** and **IV**.



**Figure S18.** Expansions of HMBC spectrum of DCM extract of of *M. bosniense*: long-range H/C correlations of compounds **II** and **IV**.