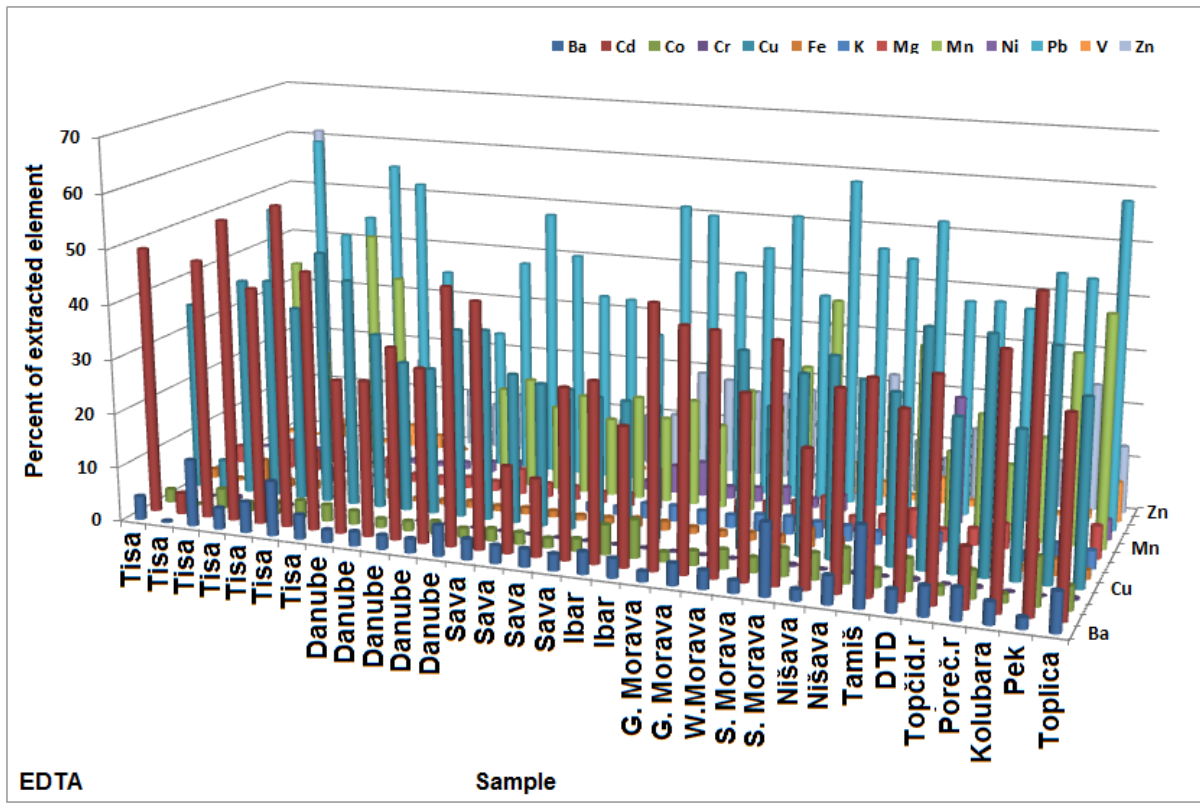


Supplementary data for the article:

Sakan, S.; Popović, A.; Škrivanj, S.; Sakan, N.; Đorđević, D. Comparison of Single Extraction Procedures and the Application of an Index for the Assessment of Heavy Metal Bioavailability in River Sediments. *Environmental Science and Pollution Research* **2016**, *23* (21), 21485–21500. <https://doi.org/10.1007/s11356-016-7341-6>



Suppl. Fig. 2. Percent of extracted element (extraction with EDTA)