

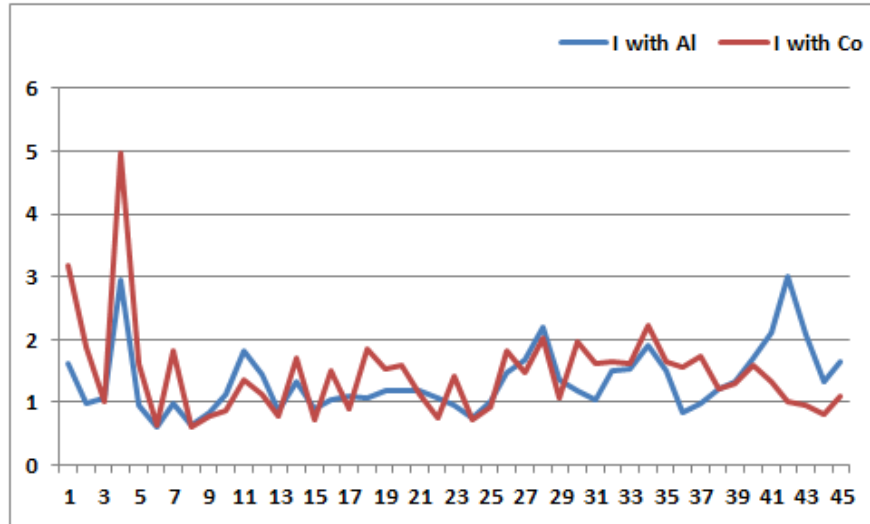
Supplementary material for the article:

Spahić, M. P.; Sakan, S.; Cvetković, Ž.; Tančić, P.; Trifković, J.; Nikić, Z.; Manojlović, D.  
Assessment of Contamination, Environmental Risk, and Origin of Heavy Metals in Soils  
Surrounding Industrial Facilities in Vojvodina, Serbia. *Environmental Monitoring and  
Assessment* **2018**, *190* (4). <https://doi.org/10.1007/s10661-018-6583-9>

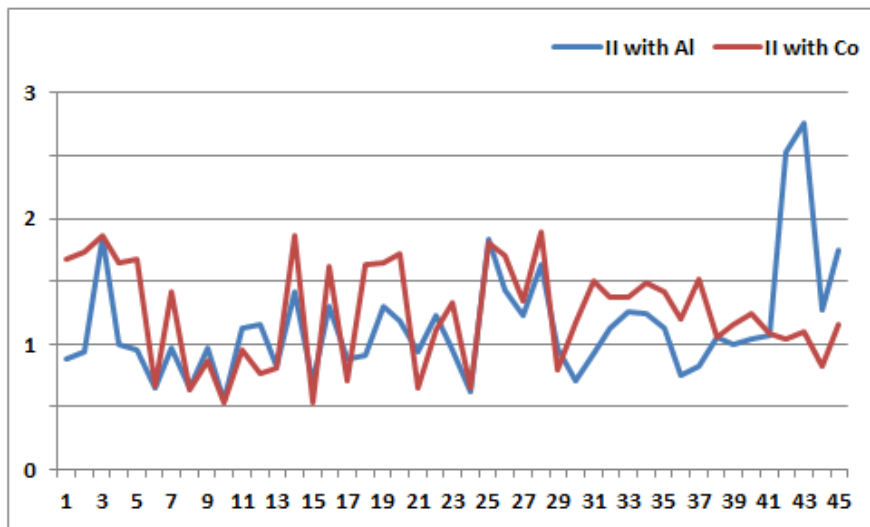
**Supplementary Table 1** Interelement correlation coefficients for the soil samples (n=45)

	Al	As	B	Cd	Cr	Cu	Fe	Mn	Ni	Pb	Co	Zn	Hg	Ca	K	Mg
Al	1.000															
As	-0.371*	1.000														
B	-0.134	0.631**	1.000													
Cd	0.408**	-0.077	0.119	1.000												
Cr	0.100	0.382**	0.433**	0.173	1.000											
Cu	0.090	0.201	0.255	0.119	0.686**	1.000										
Fe	0.913**	-0.290	-0.080	0.437**	0.248	0.136	1.000									
Mn	0.204	-0.155	-0.018	0.182	0.002	0.024	0.147	1.000								
Ni	-0.097	0.320*	0.335*	0.191	0.878**	0.395**	0.085	0.032	1.000							
Pb	-0.260	0.715**	0.585**	0.091	0.413**	0.218	0.062	-0.091	0.263	1.000						
Co	0.173	0.671**	0.625**	0.256	0.702**	0.284	0.344**	-0.007	0.596**	0.649**	1.000					
Zn	0.285	0.457**	0.690**	0.245	0.667**	0.523**	0.366**	-0.031	0.373*	0.646**	0.748**	1.000				
Hg	-0.180	0.037	0.207	-0.242	0.133	0.242	-0.237	0.010	0.010	0.018	-0.148	0.096	1.000			
Ca	-0.075	0.293	0.148	-0.159	0.059	0.052	-0.001	-0.079	-0.034	0.204	0.194	0.084	0.198	1.000		
K	-0.240	0.478	0.404	-0.078	0.239	0.094	-0.431	0.378**	0.156	0.351**	0.241	0.332	0.208	0.047	1.000	
Mg	-0.627**	0.052	-0.047	-0.192	0.038	0.010	-0.662	-0.085	0.255	-0.183	-0.318	-0.329	0.147	-0.075	0.179	1.000

\* Correlation is significant at 0.05 level (2-tailed); \*\* Correlation is significant at 0.01 level(2-tailed)



a)



b)

**Supplementary Figure 1.** EF values for Cd calculated with: a) Surface layer; b) Subsurface layer.

