

Supplementary material for the article:

Šoštarić, T. D.; Petrović, M. S.; Pastor, F. T.; Lončarević, D. R.; Petrović, J. T.; Milojković, J. V.; Stojanović, M. D. Study of Heavy Metals Biosorption on Native and Alkali-Treated Apricot Shells and Its Application in Wastewater Treatment. *Journal of Molecular Liquids* 2018, 259, 340–349. <https://doi.org/10.1016/j.molliq.2018.03.055>

# Study of heavy metals biosorption on native and alkali-treated apricot shells and its application in wastewater treatment

Tatjana D. Šoštarić\*<sup>a</sup>, Marija S. Petrović<sup>a</sup>, Ferenc T. Pastor<sup>b,c</sup>, Davor R. Lončarević<sup>d</sup>, Jelena T., Petrović<sup>a</sup>, Jelena V. Milojković<sup>a</sup>, Mirjana D. Stojanović<sup>a</sup>

<sup>a</sup> Institute for Technology of Nuclear and Other Mineral Raw Materials, Franchet d'Esperey 86, 11000 Belgrade, Serbia

<sup>b</sup> University of Belgrade, Faculty of Chemistry, Studentski trg 12-16, 11000 Belgrade, Serbia

<sup>c</sup> Ghent University Global Campus, 119 Songdomunhwa-Ro, Yeonsu-Gu, Incheon, South Korea

<sup>d</sup> University of Belgrade, Institute of Chemistry, Technology and Metallurgy, Department of Catalysis and Chemical Engineering, Njegoševa 12, 11000 Belgrade, Serbia

---

## Supplementary material

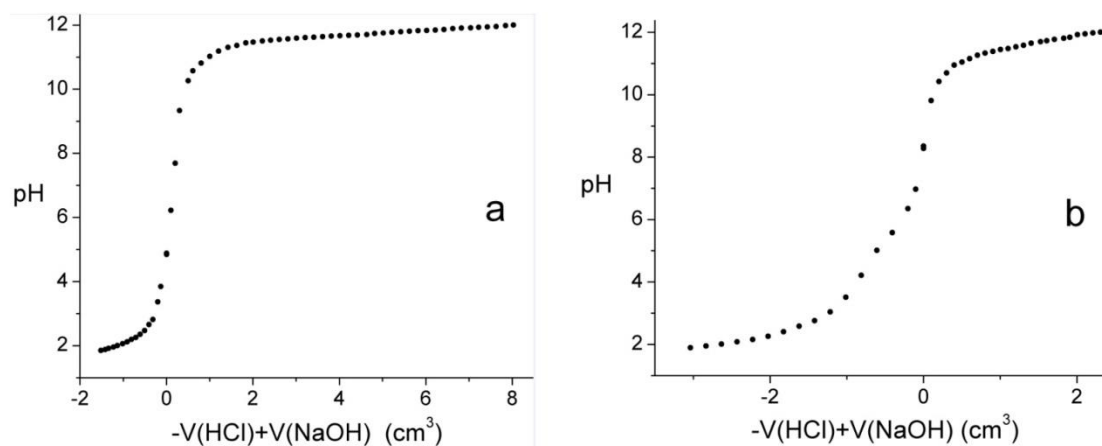


Fig. 1 The titration curves of mixtures of 1.5 g of SH (a) or SHM (b) and 30.0 cm<sup>3</sup> of water titrated with 0.3 M HCl and NaOH solutions. The volumes of HCl and NaOH were recalculated on exactly 0.3000 M instead of actually used (0.3038 M HCl and 0.3010 M NaOH).

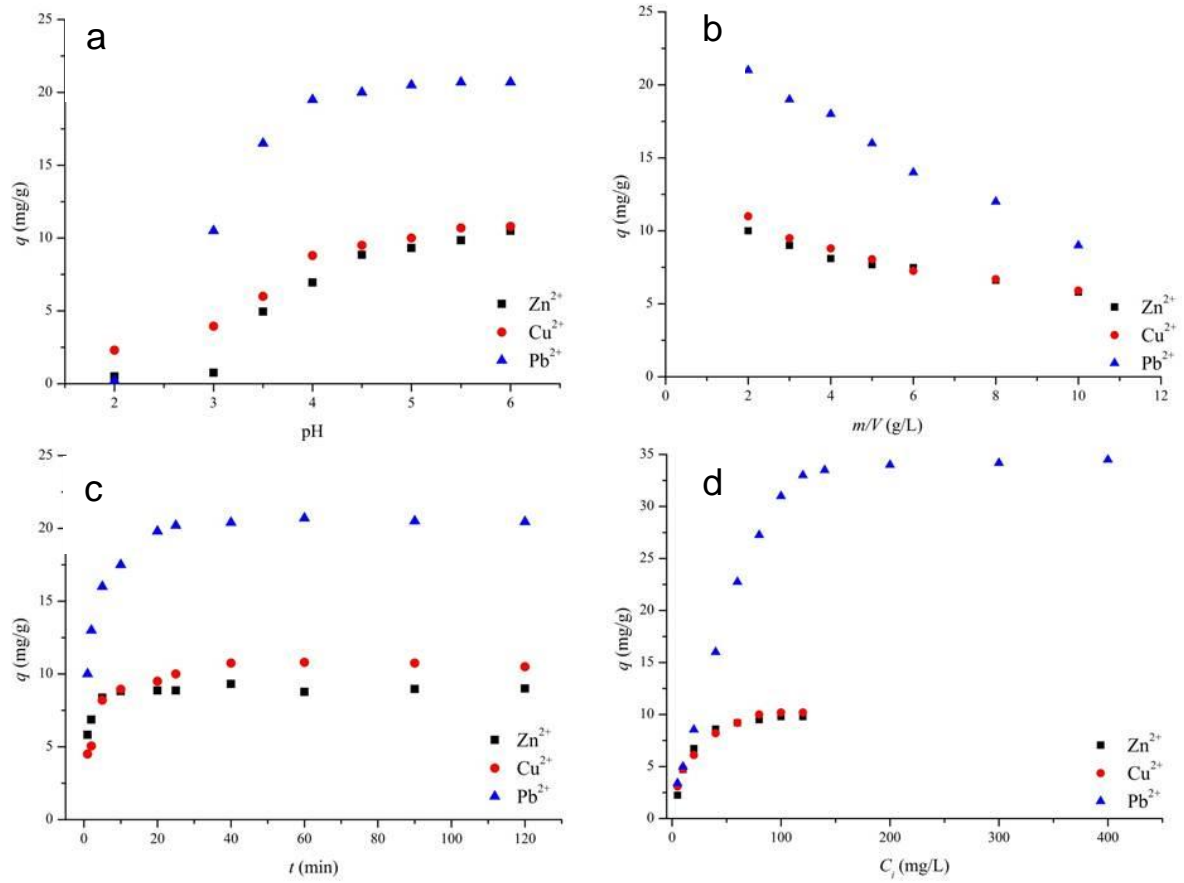


Fig. 2 Effect of operating parameters on adsorption capacity of SHM: (a) pH; (b) SHM dosage; (c) contact time and (d) initial metal concentration

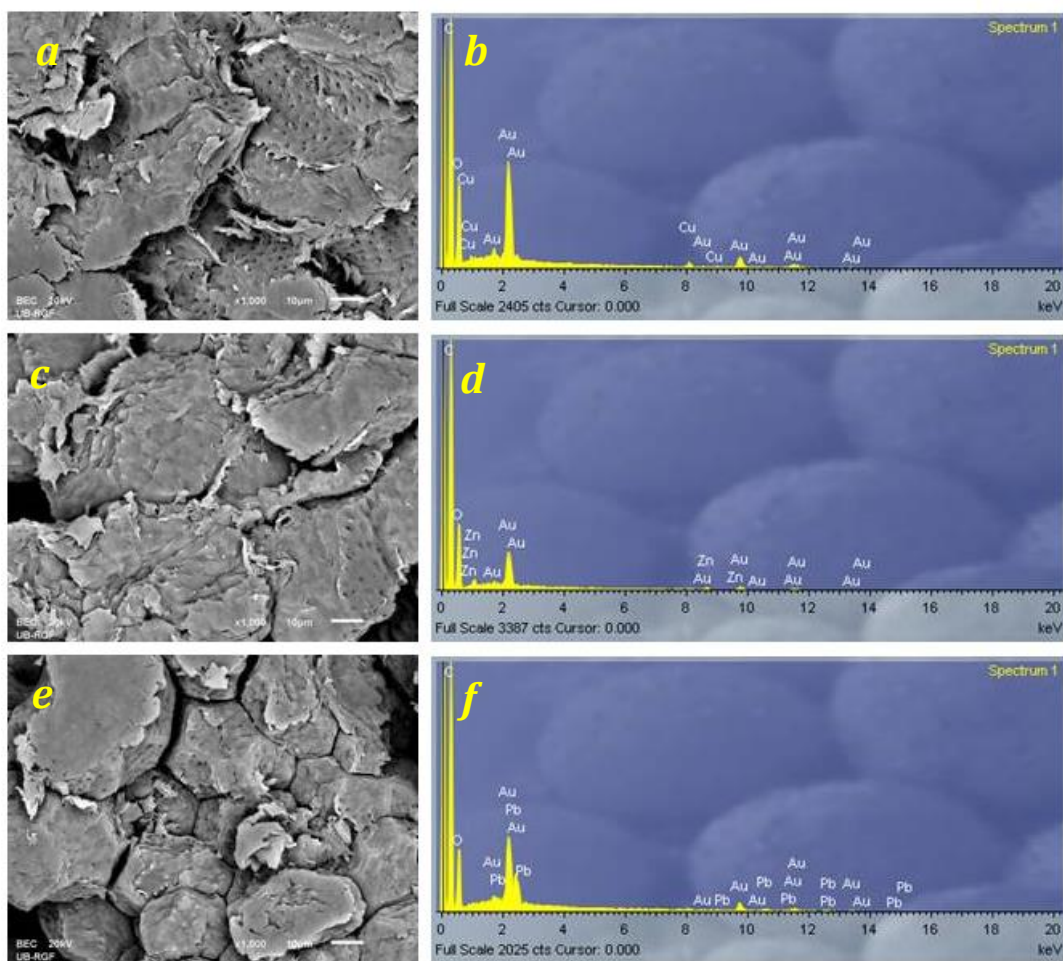
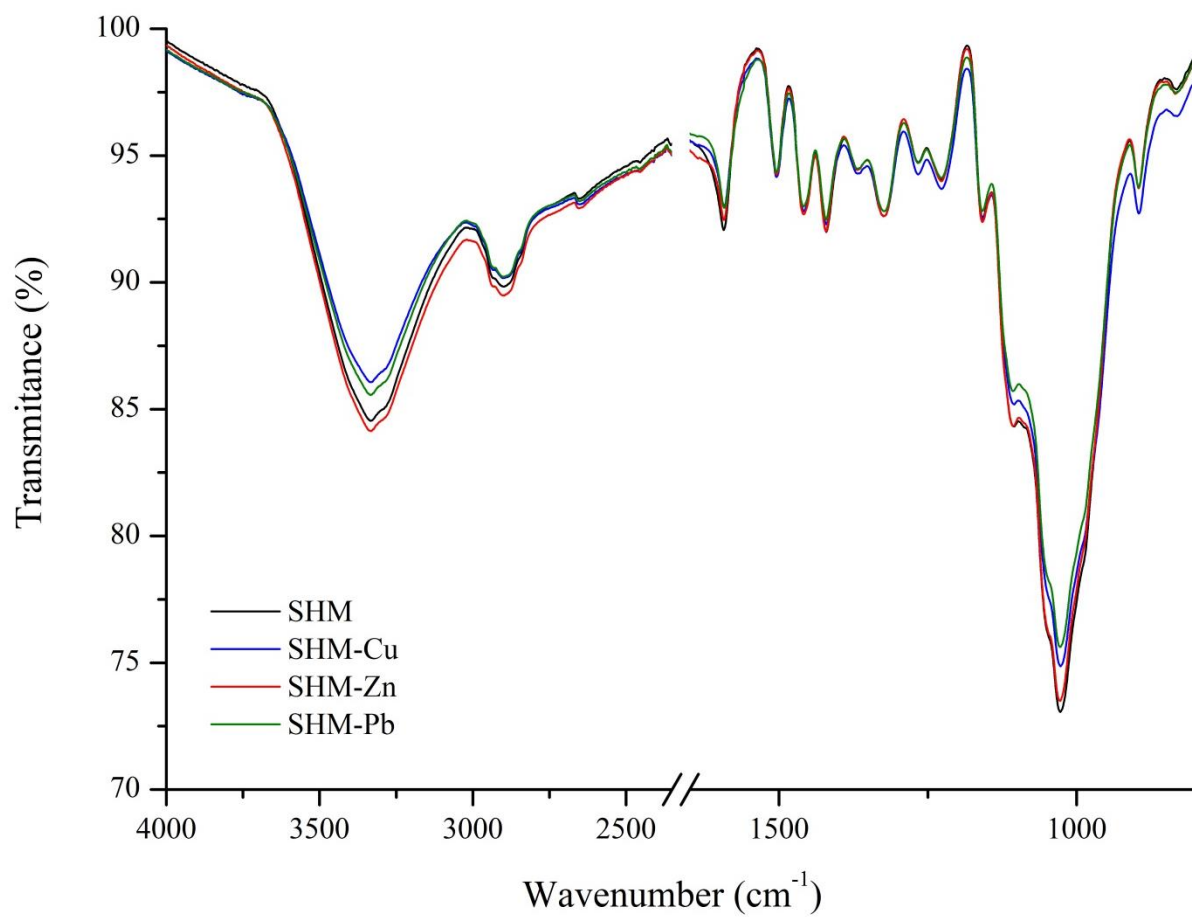


Fig. 3 SEM micrographs of SHM: a) after Cu(II) adsorption (1000x); c) after Zn(II) adsorption (1000x); e) after Pb(II) adsorption (1000x); EDX spectrum of SHM: b) after Cu(II) adsorption; d) after Zn(II) adsorption; f) after Pb(II) adsorption.

Table 1 Elemental distribution of SH, SHM and SHM after metal adsorption

Biomass / Element (wt.%)	C	N	O	Na	Mg	K	Ca	Cu	Zn	Pb
SH	59.65	0.00	40.11	0.00	0.00	0.24	0.00	-	-	-
SHM	59.29	0.00	40.29	0.42	0.00	0.00	0.00	-	-	-
SHM-Cu	57.93	0.00	39.88	0.00	0.00	0.00	0.00	2.20	-	-
SHM-Zn	53.06	0.00	44.10	0.00	0.00	0.00	0.00	-	2.79	-
SHM-Pb	57.96	0.00	36.00	0.00	0.00	0.00	0.00	-	-	6.03



*Fig. 4 FTIR-ATR spectra of SHM before and after adsorption of metals*