

Characterization of wheat (*Triticum aestivum* L.) genotypes unraveled by molecular markers considering heat stress

Jagadale Mahesh Vasantrao*, Y K Pankaj and Rajeev Kumar

Department of Agricultural Biotechnology and Molecular Biology, Dr. Rajendra Prasad Central Agricultural University, Pusa, Samastipur, Bihar 848125, India

Received 20 July 2018; revised 6 March 2019; accepted 22 March 2019

The current study focuses and emphasis on the potential of heat stress to negatively affect crop physiology. Here, we have screened 19 wheat (*Triticum aestivum* L.) genotypes for their tolerance of heat stress. Significant differences were observed among the genotypes for all the traits under consideration. Exploitable extent of genetic variability amongst the entries was present as revealed by considerably higher estimates of mean percentage. On the basis of heat susceptibility index genotypes, Halna, Mon's Ald's, Cuo/79/Prulla and K 307 were identified as heat-tolerant whereas SAWSN 3041, SAWSN 3101 and K 0583 were identified as heat-susceptible. Seventeen wheat microsatellite markers were capable of detecting 89 alleles with an average of 4.6 alleles per locus. Polymorphism information content (PIC) value ranged from 0.16 for the primer XGWM 516 to 0.83 for DUPW 117 with an average of 0.60. A perusal of similarity coefficients clearly reflected that a very high degree of similarity exists between wheat variety Mon's Ald's and SAWSN 3101 (0.70). On the other hand, the two most distantly related cultivars were found to be AKAW 4008 and PBW 343 (0.034). Marker BARC 4, BARC 170, BARC 311, PSP 3058, WHE014, H04 and GWM 458 were strongly associated with the heat tolerance for traits TGW and BARC 311 were strongly associated with terminal heat tolerance for number of grains/plant, respectively. Considering all the parameters it is adjudged that relatively stable genotypes may be evaluated at various agro-climatic regions for grain yield and heat tolerance along with other contributing characters and ideal plant type.

Keywords: Wheat genotypes, polymorphism information content, grain filling duration, thousand grain weight, coefficients of variation

Introduction

Wheat (*Triticum aestivum* L.) is one of the most widely grown cereals in the world. Its productivity in the coming decades, like that of most major crops, is threatened by impending climate change; the global mean temperature is predicted to rise by 0.3°C per decade. Low temperature (<12°C) applied during germination and seedling emergence in wheat resulted in poor and uneven emergence¹, while spring wheat exposed to high temperature (30-35°C) resulted in a decrease in time to flowering, grain set, and physiological maturity, ultimately reducing grain yield². Currently crop models are evolving to accommodate the nonlinear response to temperature and the steep reduction in grain number associated with short periods (1-2 day) of heat or cold shock. The association mapping approach combines phenotypic with genotypic data to identify genomic locations associated with variation in a given trait. Its

ability to resolve marker/trait association depends upon the extent of linkage disequilibrium present in the association panel³. Linkage disequilibrium (LD) refers to the non-random association of alleles at two or more loci in a general population. More LD in A and B genome is due to recent evolution of D genome about 1-2 million years compared to A and B genome which evolved about 7 million years ago. The association mapping approach has been applied to a range of crop species, facilitating the discovery of many quantitative trait loci (QTL). In wheat, for example, loci associated with variation in kernel size and milling quality, grain yield, resistance to disease and various agronomic traits have been located in this way⁴. Several association mapping studies have been conducted to dissect the genetic basis of grain yield in wheat⁵. Assessment of nature and magnitude of genetic variation, genetic resource characterization and identifying a marker for the tolerance would be a practicable solution for development of improved cultivars resistant to a biotic stresses and for efficient management and utilization of germplasm in regions

* Author correspondence:
mvjagadale@gmail.com

where stress occurs commonly. Keeping all above consideration in view, the present investigation was carried out to identify polymorphic SSR markers to characterize the promising lines and to determine the extent of genetic divergence among the lines, followed by a survey of markers for their association to heat tolerance.

Materials and Methods

Plant Material

A total of 19 diverse wheat genotypes from all over the world were selected for the evaluation (Table 1).

Phenotypic Evaluation

The experimental material was sown in control and polytunnel condition. The genotypes were grown in randomized block design with two replications. Cultivars were exposed to increased artificial temperature from anthesis onwards in plastic sheet tunnel with semi controlled temperature condition. The chamber was set at 35/30°C and 14/10 h day/night, 50/70% relative humidity and illumination of 335 μmol . For this, two replications were to be evaluated under natural conditions followed by exposure towards enhanced heat by covering it with plastic sheet tunnels, simulating the condition of greenhouse effect. All the recommended cultural and agronomical practices were followed uniformly to raise crop. Data were recorded for each genotypes

towards both the control and stressed environment excluding border effect for eight quantitative characters viz. grain filling duration (GFD), number of effective tillers, spike length (SL), number of spikelet's, number of grains per main spike, thousand grain weight (TGW), grain yield (GY) and harvest index (HI).

Plant DNA Isolation

Genomic DNA from all the 19 wheat genotypes was isolated from 30 days old seedlings following modified CTAB extraction method described by Doyle & Doyle (1990)⁶. A total of 30 markers were selected for the screening of genotypes.

Statistical Analysis

Morphological Analysis

Mean performance on plot basis was determined by taking the average performance of the plants over the block of particular genotypes. Analysis of variance (ANOVA) preparation was followed by the mean sum of squares where, genotypic mean square was tested against error mean squares by F-test for (v-1) and (v-1) (r-1) degree of freedom both at 1% or 5% level of significance. Standard error was calculated with the help of error mean square by the formula. Error M.S.S. (M.Se) =

$$\frac{\text{Error sum of square (E.S.S.)}}{\text{Degree of freedom for error (v-1) (r-1)}}$$

Critical difference was calculated to know whether the difference between two treatments was significant at 1% or 5% level. The genotypic variance (V_g or σ_g^2) and phenotypic variance (V_p or σ_p^2) were obtained from the analysis of variance. Burton and Devane (1951) suggested a formula to calculate coefficient of variability⁷. Heritability was expressed in terms of percentage as defined by Panse *et al* (1957)⁸ and was calculated as per given by Fisher and Maurer (1978)⁹. Genetic advance i.e. expected genetic gain from the selection of 5% superior individuals was estimated and followed by the estimation of genetic advance a percentage of mean. Heat susceptibility index was computed by using the methods suggested by Fisher & Maurer (1978)⁸.

Molecular Study

Marker polymorphism was used to measure the informativeness of the marker; the PIC for each marker was calculated according to the formula given by Anderson *et al*¹⁰. Genetic similarity estimation and

Table 1 — List of genotypes and their sources

S. No.	Varieties name	Source
1	PBW 343	RAU, Pusa
2	C 306	RAU, Pusa
3	Pusa Gold	RAU, Pusa
4	SAWSN 3042	NBPGR, New Delhi
5	Halna	IARI
6	Iepaca Rabe	IARI
7	Sonalika	IARI
8	Kauz/AA/Kauz	IARI
9	AKAW 4189-3	RAU, Pusa
10	Mon's Ald's	IARI
11	SAWSN 3101	NBPGR, New Delhi
12	VL 914	IARI
13	HD 2888	RAU, Pusa
14	AKAW 4008	IARI
15	HD 2285	IARI, Pusa
16	Cuo/79/Prulla	IARI
17	K 0583	RAU, Pusa
18	K 307	RAU, Pusa
19	HD 2733	IARI, Pusa

diversity analysis and the genetic association among varieties were analysed by calculating the similarity coefficient for pair-wise comparisons based on the proportions of shared bands produced by primers¹¹. The dendrogram based on similarity indices was obtained by unweighted pair group method of arithmetic-average (UPGMA). The nature and extent of diversity between varieties were assessed by identifying the clusters at appropriate phenon levels. All calculations were performed using the NTSYS-pc version 1.10 m software.

Association Study

A set of four genotypes, both from heat-tolerant and susceptible groups, categorised on the basis of HSI score for the considered traits above were selected for the association analysis with markers. The marker showing the values of χ^2 probability more than 0.90 were considered as strongly associated, values from 0.80 to 0.90 were considered as moderately associated, from 0.70 to 0.80 weakly associated and below 0.70 were considered as not associated. The association between phenotypic data and molecular data were

analysed on the basis of following statistical model given below:

$$\chi^2 = \frac{(ad-bc)^2 (a+b+c+d)}{(a+b)(a+c)(b+d)(c+d)}$$

For two-fold table (1× r table),

$$\chi^2 = \frac{1}{n_1 n_2} \sum \frac{(an_2 - a'n_1)^2}{a+a'}$$

Results and Discussion

Analysis of Variance

Analysis of variance was carried out for the performance of the individual under two environments for all the eight characters studied (Table 2). The mean squares due to genotypes were significant for all the given characters below.

Mean Performance of Genotypes

The mean performance of 19 genotypes with respect to eight quantitative characters studied in the present investigation under two environmental conditions has been furnished in (Table 3 & 4). Here, we have assumed HD2733

Table 2 — Average days to grain filling duration, total number of effective tillers, spike length and number of spikelet's per ear head of 19 genotypes of wheat in open and polytunnel conditions

S. No.	Genotype	Grain filling duration (days)		Total no. of effective tillers		Spike length (cm)		No. of spikelet's/ear	
		Open	Polytunnel	Open	Polytunnel	Open	Polytunnel	Open	Polytunnel
1	PBW 343	34	29.5	12.83	4.66	6.25	6.17	39.185	31.35
2	C 306	37	34	6.33	7.5	9.67	8.44	48.5	46.2
3	Pusa Gold	38.5	32	7.81	5.99	6.78	6.91	36.41	41.59
4	SAWSN 3042	35.5	31.5	9.5	6.83	9.06	9.26	35.49	47.045
5	Halna	28.5	26.5	4.96	6.5	7.775	6.09	47.95	40.24
6	Iepaca Rabe	32.5	30	4.8	6.66	7.1	9.03	34.12	50.55
7	Sonalika	37	33	6.3	5.66	8.54	8.94	36.9	37.25
8	Kauz/AA/Kauz	36.5	32.5	6.33	8.3	4.87	8.65	25.6	45.16
9	AKAW 4189-3	32.5	29	6.83	4.66	8.49	9.5	45.51	49.96
10	Mon's Ald's	31	28	6.3	7.8	4.85	7.07	35.34	48.045
11	SAWSN 3101	31	26	5.49	6.48	7.8	7.95	48.17	43.09
12	VL 914	31.5	30.5	5.16	5.99	10.225	9.98	47.14	52.32
13	HD-2888	33	31	8.5	5.83	8.28	7.35	41.43	38.87
14	AKAW-4008	34	29.5	7	7	8.95	9.5	52.88	49.49
15	HD-2285	33.5	30	5.81	4.66	7.6	8	40.74	34.69
16	Cuo/79/Prulla	34	32	5.3	5.83	9.45	9.72	47.15	44.34
17	K 0583	31.5	27.5	4.98	7	8.3	7.62	51.33	42.76
18	K 307	36	33.5	7.33	6.83	8.74	8.38	49.09	43.99
19	HD 2733	35	32.5	9.16	7.33	7.76	8.15	56.19	50.97
20	Mean	33.81	30.44	6.88	6.39	7.92	8.25	43.11	43.86
21	S.Em. ±	1.13	1.15	0.61	0.43	0.6	0.31	2.02	2.28
22	CD at 5%	3.37	3.44	1.83	1.27	1.8	0.92	6.02	6.77
23	CV %	4.74	5.3	12.7	9.51	10.84	5.35	6.64	7.35

Table 3 — Average days to no. of grains/spike, 1000 grains weight, grain yield/plant, harvest index of 19 genotypes of wheat in open and polytunnel conditions

S. No.	Genotype	No. of grains/spike		1000 grains weight (g)		Grain yield/plant (g)		Harvest index (%)	
		Open	Polytunnel	Open	Polytunnel	Open	Polytunnel	Open	Polytunnel
1	PBW 343	28.47	20.21	34.14	22.71	13.66	4.16	44.57	37.87
2	C 306	34.26	0	42.44	0	8	0	42.74	0
3	Pusa Gold	36.1	30.1	32.93	26.24	8.16	4.83	50.04	38.68
4	SAWSN 3042	27.09	0	42.32	0	11.83	0	49.95	0
5	Halna	45	28.84	30.65	34.94	8.16	10.83	56.04	39.41
6	Iepaca Rabe	11.49	28.05	29.29	37.83	10.7	1.3	69.84	8.98
7	Sonalika	29.12	14.91	37.75	28.23	7.33	2.41	45.79	21.97
8	Kauz/AA/Kauz	48.23	14.05	20.33	29.72	5.24	2.74	46.34	18.59
9	AKAW 4189-3	31.18	13.86	27.66	18.36	7.09	2.18	40.48	16.94
10	Mon's Ald's	19.48	19.02	27.84	19.83	4.66	3.16	44.28	23.69
11	SAWSN 3101	28.89	2.28	30.005	0.69	4.61	0.06	40.55	0.58
12	VL 914	41.85	16.69	35.72	15.75	7.16	2.61	45.89	16.68
13	HD 2888	37.15	14.53	38.1	21.5	6.99	3.08	31.61	17.15
14	AKAW 4008	43.44	29.28	32.12	25.83	9	5.5	45.67	35.34
15	HD 2285	29.78	21.11	33.16	17.62	5.99	3.88	42.87	28.39
16	Cuo/79/Prulla	30.44	19.6	34.44	27.55	5.33	2.66	41.53	20
17	K 0583	46.74	22.58	40	23.23	6.71	2.38	51.17	21.23
18	K 307	26.14	22.15	35.67	22.26	7.5	4.25	45.76	36.68
19	HD2733	33.53	22.89	41.01	22.26	13.74	3.7	60.96	26.43
20	Mean	33.07	17.9	33.97	20.76	7.99	3.06	47.34	20.93
21	S.Em. \pm	1.73	1.72	0.89	1.54	0.73	0.44	3.19	2.83
22	CD at 5%	5.15	5.13	2.64	4.58	2.17	1.31	9.49	8.42
23	CV %	7.41	13.64	3.71	10.49	12.94	20.36	9.54	19.15

Table 4 — Estimates of genotypic variance, phenotypic variance, heritability, genetic advance, genetic advance as per cent of mean, genotypic and phenotypic coefficient of variation (GCV and PCV)

S. No.	Characters	Environment	Range	GV	PV	Heritability	GCV	PCV	GA	GA % M
1	Grain filling duration (days)	Open	28.5-38.5	5.25	7.82	67.07	6.77	8.27	3.86	11.43
		Polytunnel	26-34	4.07	6.76	60.23	6.63	8.54	3.23	10.59
2	Total no. of effective tillers	Open	4.8-12.83	3.65	4.41	82.68	27.76	30.53	3.58	52
		Polytunnel	4.6-8.3	0.89	1.25	71.31	14.8	17.53	1.64	25.75
3	Spike length (cm)	Open	4.8-10.2	1.77	2.5	70.52	16.77	19.97	2.3	29.02
		Polytunnel	6.09-9.98	1.25	1.44	86.49	13.55	14.57	2.14	25.95
4	No. of spikelet/ear head	Open	25.6-56.19	56.98	65.19	87.4	17.51	18.73	14.54	33.72
		Polytunnel	31.35-52.32	29.34	39.75	73.83	12.35	14.37	9.59	21.86
5	No. of grains/spike	Open	11.49-46.74	84.81	95.88	88.45	27.85	29.61	17.84	53.95
		Polytunnel	0-30.1	84.63	90.59	93.42	51.39	53.17	18.32	102.33
6	1000 grains weight (g)	Open	20.33-42.44	31.54	33.13	95.2	16.53	16.94	11.28	33.22
		Polytunnel	0-37.83	111.6	116.35	95.91	50.89	51.97	21.31	102.68
7	Grain yield/plant (g)	Open	4.6-13.74	6.93	8	86.62	32.92	35.37	5.05	63.12
		Polytunnel	0-9.83	4.83	5.21	92.7	71.56	74.59	4.35	142.15
8	Harvest index (%)	Open	31.61-69.84	64.6	85	75.29	16.97	19.47	14.43	30.48
		Polytunnel	0-39.41	147.06	163.13	90.14	57.93	61.02	23.71	113.28

as a check variety in compare with all the characters mentioned below.

Variability Range

The estimates of phenotypic coefficient of variation revealed a wide range of variation ranging from 8.17

for grain filling duration (GFD) to 74.59 for grain yield per plant. The range of genetic coefficient of variation (GCV) varied from 6.63 (GFD) to 71.56 (grain yield / plant). The characters grain yield per plant, HI, number of grains per spike, thousand grain weight (TGW) showed comparatively high GCV,

while other characters have shown moderate to low estimates of GCV.

Heritability

High heritability was recorded for the characters viz., number of grains per spike, TGW and grain yield, whereas most of the characters under study had moderate to low heritability. The heritability percentage ranged from 67.06 (GFD) to 95.10 (TGW) in open and 60.13 (GFD) to 95.91 (TGW) in polytunnel condition (Table 5).

Identification of Heat Stress Tolerant Genotype

HSI was conducted by keeping the five characters under consideration (Table 5). HSI for GFD ranged from 0.31 (VL 914) to 1.69 (Pusa Gold). Genotypes C 306, Halna, Iepaca Rabe, Mon's Ald's, VL 914, HD 2888, Cuo/79/prulla, K307, and check HD 2733 showed value of HSI below unity i.e. these genotypes were heat-tolerant and VL 914 which showed minimum HSI was most heat-tolerant genotype for GFD. The remaining 10 genotypes were heat-susceptible and Pusa Gold had maximum value of HSI and thus was most heat-susceptible genotype.

Number of grains per spike showed range of heat susceptibility index from 3.14 (Iepaca Rabe) to 1.18 (C306 and SAWSN 3041). The genotypes PBW 343,

Pusa Gold, Halna, Iepaca Rabe, Mon's Ald's, AKAW 4008, HD 1185, Cuo/79/Prulla, K 307 and check HD 1733 showed value of HSI below unity i.e. these genotypes were heat-tolerant and Iepaca Rabe which exhibited the least value of HSI was the most heat-tolerant. The remaining nine genotypes had value of HSI above unity i.e. these genotypes were heat-susceptible and C 306 and SAWSN 3041 with maximum HSI value for number of grains per spike were the most heat-susceptible.

HSI of genotypes ranged from -1.19 (Kauz/AA/Kauz) to 1.57 (C 306 and SAWSN 3041) for 1000 grain weight. Eleven genotypes, namely PBW 343, Pusa Gold, Halna, Iepaca Rabe, Sonalika, Kauz/AA/Kauz, AKAW 4189-3, Mon's Ald's, AKAW 4008, Cuo/79/Prulla and K 307 had their HSI value below unity i.e. these genotypes were heat-tolerant and the remaining eight genotypes showing their HSI value above unity were heat-susceptible. Kauz/AA/Kauz was the most heat-tolerant genotype while C 306 and SAWSN 3041 were most heat-susceptible for TGW.

For the character grain yield per plant, the value of HSI varied from -0.54 (Halna) to 1.65 (C 306 and SAWSN 3041). The genotypes PBW 343, C 306, SAWSN 3041, Iepaca Rabe, Sonalika, AKAW 4189-

Table 5 — Heat susceptibility index (HSI) of 19 genotypes of wheat (*Triticum aestivum* L.) for grain filling duration, number of grains per spike, 1000 grain weight, grain yield per plant and harvest index

S. No.	Genotypes	Heat susceptibility index (HSI)										
		Grain filling duration (days)	Score	No. of grains/spike	Score	1000 grains weight (g)	Score	Grain yield/plant	Score	Harvest index	Score	Total Score
1	PBW 343	1.32	3	0.63	14	0.86	9	1.15	5	0.28	18	49
2	C 306	0.81	10	2.18	1	2.57	1	1.65	1	1.84	1	14
3	Pusa Gold	1.69	1	0.36	15	0.52	12	0.67	14	0.42	15	57
4	SAWSN 3042	1.13	5	2.18	1	2.57	1	1.65	1	1.84	1	9
5	Halna	0.7	13	0.78	9	-0.36	15	-0.54	18	0.55	14	69
6	Iepaca Rabe	0.77	11	-3.14	18	-0.75	16	1.45	3	1.6	3	51
7	Sonalika	1.08	7	1.06	8	0.65	11	1.11	7	0.96	9	42
8	Kauz/AA/Kauz	1.1	6	1.55	3	-1.19	17	0.79	12	1.1	5	43
9	AKAW 4189-3	1.08	7	1.21	6	0.86	9	1.14	6	1.07	7	35
10	Mon's Ald's	0.97	9	0.05	17	0.74	10	0.53	17	0.85	11	64
11	SAWSN 3101	1.61	2	2.01	2	2.51	2	1.63	2	1.81	2	10
12	VL 914	0.31	17	1.31	5	1.44	3	1.05	9	1.17	4	38
13	HD 2888	0.6	15	1.33	4	1.12	6	0.92	10	0.84	12	47
14	AKAW 4008	1.32	3	0.71	11	0.5	14	0.64	15	0.42	16	59
15	HD 2285	1.04	8	0.63	13	1.21	4	0.58	16	0.62	13	54
16	Cuo/79/Prulla	0.59	16	0.78	10	0.51	13	0.82	11	0.95	10	60
17	K 0583	1.27	4	1.13	7	1.08	7	1.06	8	1.08	6	32
18	K 307	0.69	14	0.33	16	0.97	8	0.71	13	0.37	17	68
19	HD2733	0.72	12	0.69	12	1.18	5	1.2	4	1.04	8	41

Table 6 — Repeat motif, number of locus and allele detected, Rf value, range of allele size (bp) and PIC value of microsatellite markers used in the study

S. No.	Name of primer	Chromosome location	No. of locus	No. of allele	Rf value	Range of allele size (bp)	Repeat motif	PIC
1	BARC 4	5B	2	9, 6	0.67-0.74 0.80-0.85	176-230 89-122	(TTA) ₁₅	0.78
2	BARC 110	5D	1	5	0.72-0.77	176-212	(ATT) ₂₈	0.73
3	BARC 170	4A	1	6	0.71-0.74	172-199	(ATT) _n	0.8
4	BARC 321	3A	1	4	0.59-0.64	184-216	(CT) ₁₄ (CA) ₁₇	0.68
5	DUPW 167	6A	1	6	0.62-0.68	221-258	(AAG CAT) ₅	0.55
6	DUPW 217	6B	1	4	0.60-0.62	219-228	(AAG) ₁₂	0.83
7	DUPW 238	4D	1	3	0.69-0.70	216-226	(AC) ₉	0.46
8	PSP 3000	1B	1	8	0.57-0.66	223-291	(CA) _n	0.6
9	PSP 3103	4D	1	4	0.76-0.79	163-183	(GA) _n	0.73
10	PSP 3058	6D	1	4	0.73-0.75	181-196	(TTC) ₁₃	0.27
11	PSR 6469	EST-SSR	1	3	0.69-0.73	177-201	(ACA) ₁₅	0.52
12	PSR 6512	EST-SSR	1	4	0.81-0.84	133-166	(ACA) ₅	0.78
13	TAE-hwm004. h07	1D	1	4	0.70-0.76	153-191	(AG) ₇	0.67
14	WHE024. H04	EST-SSR	2	4, 4	0.69-0.71	211-229	(ACA) ₁₃	0.46
15	WMC 817	2B,2D	1	5	0.70-0.73	510-550	(AT) _n	0.49
16	GWM 458	xgwm1D	1	4	0.82-0.84	113-131	C(CA) ₁₃	0.69
17	GWM 526	xgwm2B	1	2	0.71—0.77	140-146	(CT) ₁₆	0.26
	Total		19	89				

3, SAWSN 3101, VL 914, K 0583 and HD 1733 had their HSI value above unity i.e., these genotypes were heat-susceptible for this character. The remaining nine genotypes were heat-tolerant and Halna was the most heat-tolerant genotype. For harvest index, HSI value ranged from 0.18 (PBW 343) to 1.84 (C 306 and SAWSN 3041). Ten genotypes namely PBW 343, Pusa Gold, Halna, sonalika, Mon's Ald's, HD 1888, AKAW 4008, HD 1185, Cuo/79/Prulla and K 307 showed the value of HSI below unity, so these genotypes were heat-tolerant. The remaining nine genotypes were heat-susceptible and C 306 and SAWSN 3041 were the most susceptible genotypes. Genotypes Halna, Mon's Ald's, Cuo/79/Prulla and k 307 were heat-tolerant for almost all the five characters under study and identified as best the heat-tolerant genotypes whereas SAWSN 3041, SAWSN 3101 and K 0583 were heat-susceptible in all the five characters under study and identified as the most heat-susceptible genotypes.

Molecular Analysis

The 17 primer pairs exhibited a total of 19 loci. A total of 89 allelic variants were detected among the 19 wheat varieties with an average of 4.6 alleles per locus. For the genome A, B, D an average of 5.3, 5.8 and 4 alleles per locus, respectively. The PIC value ranged from 0.16 for XGWM 516 to 0.83 for DUPW 117 with an average of 0.60. The highest PIC value of

0.83 was recorded for the primer DUPW 117. Presence of stutter bands was also detected in the present investigation. Such bands were observed in the case of di-nucleotide SSR sequence detected by primer pair DUPW 138, PSP 3103 and XGWM 516. The SSR loci with tri-nucleotide repeat motifs detected greater number of alleles than the SSR locus with di-nucleotide repeat sequence as revealed by primer pair BARC 4. Among the loci with perfect tri-nucleotide repeat motifs, marker with a TTA and ATT repeat motif (BARC 4 and BARC 110) showed greater variability than the marker with ACA repeat motif (PSP 3058 and WHE014.H04). This inference was derived on the basis of five allelic variants at the SSR locus detected by BARC 110 and BARC 170 in comparison to only two allelic variants at the SSR locus detected by PSP 3058 and WHE014.H04. Hence, it is clearly indicated that the larger the repeat number involved in the SSR locus, the larger was the number of identified alleles.

Analysis of Genetic Divergence

Allelic diversity data was used to produce a dendrogram in order to elucidate the relationship among the 19 wheat varieties (Fig. 1). A perusal of similarity coefficients clearly reflected that a very high degree of similarity exists between wheat varieties Mon's Ald's and SAWSN 3101 (0.70). On the other hand, the two most distantly related cultivars

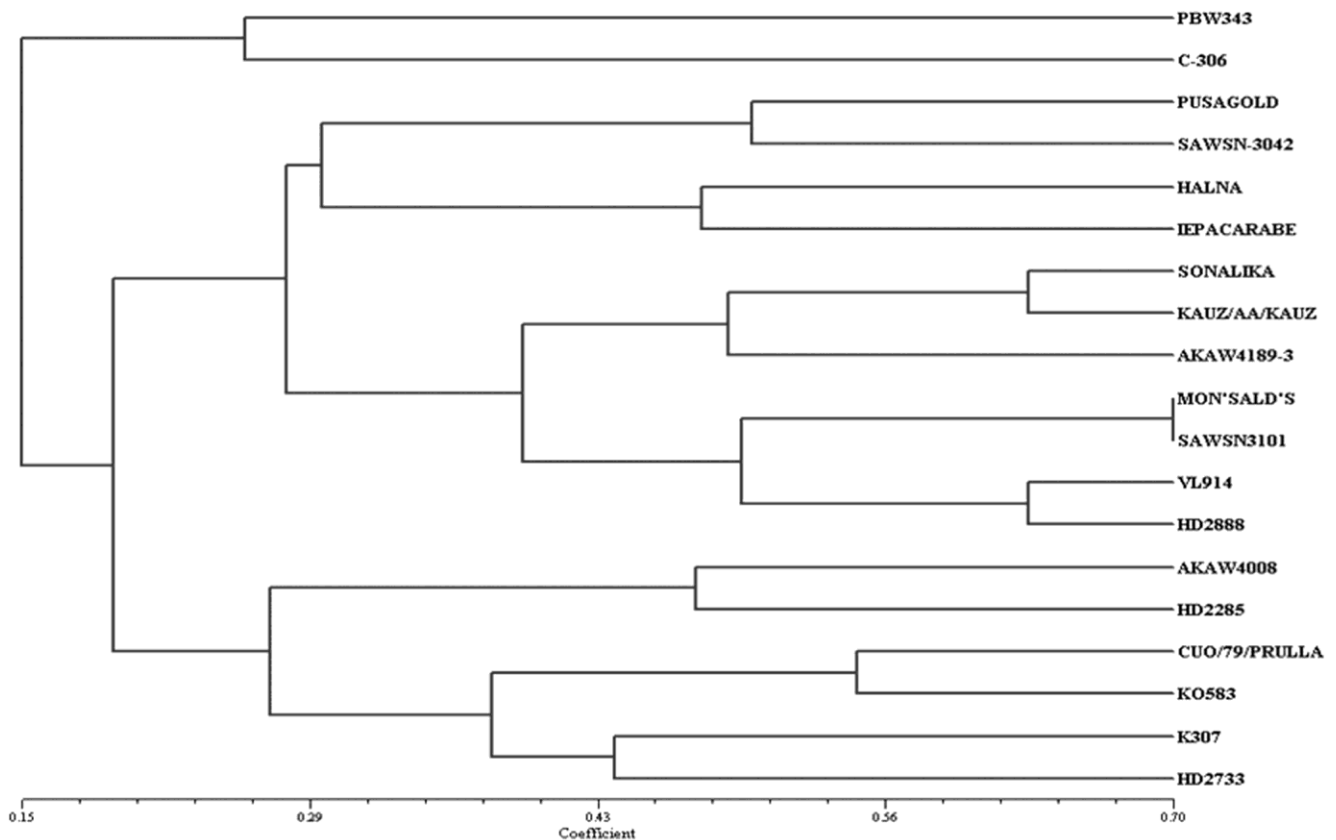


Fig. 1 — Dendrogram of 19 wheat genotypes showing genetic similarity based on 89 alleles detected by 17 microsatellite primers using Jaccard's coefficient and UPGMA

were AKAW 4008 and PBW 343 (0.034). The consensus tree showed that it divided the wheat genotypes into 2 main clusters, the first di-genotypic cluster consists of variety PBW 343 and C 306 and second multi-genotypic cluster included the rest of 17 wheat varieties. The multi-genotypic groups were further divided into 7 clusters by drawing phenon line at 50 similarity units and allowing the entries with increasingly similar pattern for markers to be clustered together. Therefore, 5 di-genotypic and 2 multi-genotypic clusters were obtained when phenon line was drawn at 50 similarity units. The di-genotypic cluster A consists of variety Pusa Gold and SAWSN 3041, B accommodated variety Halna and Iepaca Rabe while E, F and G consisted variety AKAW 4008 and HD 2733, Cuo/79/Prulla and K 0583, and K 307 and HD 2733 respectively. When phenon line was drawn keeping 85 similarity units as the cut-off point to discriminate the entries, each of the clusters C and D was further dissociated into 2 sub-clusters. The cluster C was dissociated into 2 sub-clusters with di-genotypic cluster C-I and mono-genotypic cluster

C-II. The mono-genotypic sub-cluster C-II had the variety AKAW 4189-3, while the di-genotypic sub-cluster C-I accommodated Sonalika and KAUZ/AA/KAUZ. Similarly, cluster D was further dissociated into 2 di-genotypic sub-clusters. The sub-cluster D-I had variety Mon's Ald's and SAWSN 3101, while sub-cluster D-II consisted variety VL 914 and HD 2888. Clustering pattern was found to be exactly same, when phenon line was drawn at 95 similarity units as the cut-off point.

Association Analysis

The test of independence was carried out for determining the relationships between molecular markers and different quantitative traits (data not shown). It showed that BARC 311 was weakly associated at 1 degree of freedom (probability 0.10-0.30) for the heat tolerance of the character GFD. The allele 116 of this marker was linked to heat-tolerant and allele 194 was linked to heat-susceptible group. The marker BARC 311 was strongly associated for the heat tolerance of the character number of

grains/plant at 1 degree of freedom (probability 0.01-0.05). The allele 194 of this marker was linked to tolerant group and 116 were linked to susceptible group. However, SSR marker GWM 516 was weakly associated at 1 degree of freedom (probability 0.10-0.30). The allele size 146 of this marker was linked to both heat tolerance and susceptible group at 75 and 100% probability, respectively. Four markers, BARC 311, PSR 6469, PSP 3058 and WHE014.H04 were strongly associated with the heat tolerance of the character TGW (probability 0.01-0.05) at 1 degree of freedom. The alleles 194, 177, 196 and 193 of BARC 311, PSR 6469, PSP 3058 and WHE014.H04 were linked to heat-tolerant group while alleles 116, 190, 195 and 181 were linked to susceptible group of TGW. Markers BARC 170, BARC 4 and GWM 458 were also strongly associated at 3, 1 and 1 degree of freedom (probability 0.01-0.05, 0.01-0.01, 0.05-0.10) respectively. The alleles 187, 104 and 113 were linked to tolerant group and allele 190, 111 and 131 were linked to susceptible groups of the character TGW. The marker TAE hwm004.h07 was weakly associated at 1 degree of freedom (probability 0.10-0.30). The allele 167 of this marker was 50% linked to tolerant group and 100% linked to susceptible group of TGW. The SSR marker PSP 3103 was moderately associated at 3 degree of freedom (probability 0.10-0.10) for the heat-tolerance of the character grain yield /plant. The allele 167 of this marker was linked to tolerant group and allele 183 was linked to susceptible group. The microsatellite markers BARC 110 and DUPW 138 were weakly associated for the heat tolerance of the character grain yield /plant at 3 and 1 degree of freedom (probability 0.10-0.30), respectively. The allele's size 106 and 100 of BARC 110 and alleles 110 and 116 of DUPW 138 were linked to heat-tolerant and susceptible group of the character grain yield /plant. Two markers, PSR 6511 and GWM 516 were moderately associated for heat tolerance for the character HI at 1 and 1 degree of freedom respectively (probability 0.10-0.10). The alleles 177 and 140 of the markers PSR 6511 and GWM 516 were linked to heat-tolerant group while, alleles 195 and 146 were linked to susceptible group.

Discussion

Analysis of variance indicated significant differences among genotypes for all characters under study in both the environments. Five genotypes (PBW 343, Pusa Gold, Halna, AKAW 4008 and K 307) in polytunnel condition showed significantly higher

harvest index than HD 2733 (C). The investigation involved the study of genetic variability through coefficient of phenotypic and genotypic variation as an index for the amount of potential variability present in the individual economic traits. The range of total variation observed in the eight traits exhibited a wide variation for the traits TGW. They have also reported wide variation in TGW¹²⁻¹³. Higher value of phenotypic coefficient of variation was obtained in all the cases than the genotypic coefficient of variation for all the characters.

Phenotypic coefficient of variation which measures the total variation in different characters were higher for grain filling duration, total number of effective tillers, spike length and grain yield per plant, while the characters number of spikelet's per ear head, number of grains per spike, TGW and harvest index showed low value of phenotypic co-efficient of variation. The result obtained in this study is in agreement with the result of who reported high GCV than PCV for number of effective tillers per plant¹⁴. High heritability was obtained for number of grains per spike, TGW and grain yield per plant. Sahu *et al* found high heritability for total number of effective tillers per plant, spike length, number of grain per spike and TGW. The maximum genetic advance was observed for harvest index followed by TGW while the minimum was recorded for total number of effective tillers. genetic advance as percent of mean was found maximum for grain yield per plant followed by harvest index and TGW while rest of the characters were found to show comparatively low estimates. The present result is in agreement with the result obtained by Kumar *et al*¹⁵ who found high genetic advance for yield per plant and productive tillers per plant. If high heritability is followed by high genetic advance it indicates predominance of additive gene action¹⁶. Therefore the selection for those mentioned characters would be effective owing to considerable presence of additive gene action.

The seventeen primer pairs exhibited different levels of polymorphism amongst the nineteen wheat varieties under evaluation in the present investigation. Many studies have also reported remarkable differences in allelic diversity among various microsatellite loci¹⁶. The alleles revealed by markers showed a higher degree of polymorphism. The highest number of alleles per locus was observed in the B genome while in the D genome, lower polymorphic loci were obtained. Similar observation for higher

polymorphism level of genome B was also reported by Wang *et al* (2007)¹⁷. Further analysis for genetic diversity among A, B, and D genomes in common wheat showed that the lowest genetic variation in the D genome was a major reason leading to fragile genetic basis of modern cultivated wheats¹⁸.

The highest PIC value of 0.83 was recorded for the primer DUPW 217, which were recorded in the B genome. Roussel *et al* (2004) reported highest PIC value (0.686) in the B genome as compared to A and D genomes¹⁹. Occurrence of null alleles was also noticed in various varieties for a particular locus. For 16 loci null alleles were detected. Null alleles were also detected by Teklu *et al* (2007)²⁰. Larger the repeat number involved in the SSR locus, the larger was the number of identified alleles. The observed levels of polymorphism are positively correlated with the length of the microsatellite repeats²¹ observed an increase in number of allele with the repeat number of the microsatellites used and their relative distance from the centromere, and they were not dependent on the motif of microsatellites.

The first di-genotypic cluster consists of variety PBW 343 and C 306 and second multi-genotypic cluster included the rest of seventeen wheat varieties. A perusal of similarity coefficients clearly reflected that a very high degree of similarity exists between wheat varieties Mon's Ald's and SAWSN 3101 (0.70). On the other hand, the two most distantly related cultivars were AKAW 4008 and PBW 343. Similar studies were conducted by different investigators using SSR markers²². It was assumed that such a high level of genetic similarity may be the result of biased selection of the material in the previous breeding programs, which ultimately narrowed the genetic base of the wheat germplasm.

The result of our study clearly indicated that utilization of seventeen SSR markers were sufficient for discrimination and unambiguous identification of all the nineteen wheat varieties included in the analysis. Seven markers, namely BARC 321, PSR 6469, PSP 3058 WHE024, H04, BARC 170, BARC 4 and GWM 458 were strongly associated for heat tolerance of the character 1000 grain weight, while the marker TAE hwm004.H07 was weakly associated with the character 1000 grain weight. The marker PSP 3103 was moderately associated while BARC 110 and DUPW 238 were weakly associated with the terminal heat tolerance of the character grain yield /plant. Two markers PSR 6512 and GWM 526 were moderately

associated for heat tolerance for the character harvest index. Yang *et al* (2002) identified two markers linked to grain filling duration of heat tolerance in hexaploid wheat²³. Recently, bulked segregant analysis to detect QTL related to heat tolerance in rice (*Oryza sativa* L.) using SSR markers have been reported by Zhang *et al*²⁴. Three SSR markers (Xgwm132, Xgwm577 and Xgwm 617) were linked to GFR as an indicator for heat tolerance in wheat by quantitative trait loci analysis of the F₂ population.

Reference

- Hossain A & Teixeira da Silva J A, Phenology, growth and yield of three wheat (*Triticum aestivum* L.) varieties as affected by high temperature stress, *Nat Sci Biol*, 4 (2012) 97-109.
- Hossain A, Teixeira da Silva J A, Lozovskaya M V & Zvolinsky V P, The effect of high temperature stress on the phenology growth and yield of five wheat (*Triticum aestivum* L.) genotypes, *Asian Aust J Plant Sci Biotech*, 6 (2012) 14-13.
- Gupta M, Chawla V, Garg P, Yadav N, Munjal R *et al*, Genetic analysis of yield and heat stress related traits in wheat (*Triticum aestivum* L.) using microsatellite markers, *J Appl Nat Sci*, 7(2015) 739-744.
- Bordes J, Goudemand E, Duchalais L, Chevarin L, Oury F X *et al*, Genome wide association mapping of three important traits using bread wheat elite breeding populations, *Mol Breed*, 33 (2014) 755-6.
- Kidane Y G, Mancini C, Mengistu D K, Frascaroli E, Fadda C *et al*, Genome wide association study to identify the genetic base of smallholder farmer preferences of durum wheat traits, *Front Plant Sci*, 8 (2017) 12-30.
- Doyle J J & Doyle J L, A rapid DNA isolation procedure for small quantities of fresh leaf material, *Phytochem Bull*, 119 (1990) 11-15.
- Burton G W & Devane E H, Estimating heritability in tall rescue (*Fascue arundinacea*) from replicated clonal material, *Agron J*, 45 (1951).
- Panse V G *et al*, Genetics of quantitative characters in relation to plant breeding, *Indian J Genet*, 17 (1957) 316-319.
- Hanson W D & Dekhili M, Heritability, statistical genetics and plant breeding *NASNRC, Washington Publication*, 981 (1956) 115-140.
- Fisher R A & Maurer R, Drought resistance in spring wheat cultivars I, grain yield responses, *Aust J Agric Res*, 19 (1978) 897-911.
- Anderson J A, Churchill G, Autrique J E, Tanksley S D, Sorrells M E *et al*, Optimizing parental selection for genetic linkage maps, *Genome*, 36 (1993) 181-186.
- Jaccard P *et al*, Nouvelles recherches sur la distribution folrale, *Bull Soc Vaud Sci Nat*, 44 (1908), 113-170.
- Bergale S, Mridulla B, Holkar A S, Ruwali K N & Prasad S V S, Pattern of variability, character association and path analysis in wheat, *Agri Sci Digest*, 221 (2001) 258-260.
- Sahu S, Dhari R & Joshi A K, Variability studies in wheat (*Triticum aestivum* L.) under late sown condition, *Indian J Genet Plant Breed*, 65 (2005) 309-310.

- 15 Kumar S, Dwivedi V K & Tyagi N K, Genetic variability in some metric traits and its contribution to yield in wheat (*Triticum aestivum* L.), *Prog Agricult*, 3 (2003) 152-153.
- 16 Ram S G, Thiruvengadam V & Vinod K K, Genetic diversity among cultivars, landraces and wild relatives of rice as revealed by microsatellite markers, *J Appl Genet*, 48 (2007) 337-345.
- 17 Wang H Y, Wei Y M, Yan Z H & Zheng Y L, EST-SSR DNA polymorphism in durum wheat (*Triticum durum* L.) collections, *J Appl Genet*, 48 (2007) 35-42.
- 18 Zhang X Y, Li C W, Wang L F, Wangm H M, You G X *et al*, An estimation of the minimum number of SSR alleles needed to reveal genetic relationships in wheat varieties, *Theor Appl Genet*, 106 (2002) 112-117.
- 19 Roussel V, Koenig J, Beckert M & Balfourier F, Molecular diversity in French bread wheat accessions related to temporal trends and breeding programmes, *Theor Appl Genet*, 108 (2004) 920-930.
- 20 Teklu Y, Hammer K & Röder M S, Simple sequence repeats marker polymorphism in emmer wheat (*Triticum dicoccon* Schrank) Analysis of genetic diversity and differentiation, *Genet Res Crop Evol*, 54 (2007) 543-554.
- 21 Huang X, Börner A, Röder M & Ganai M, Assessing genetic diversity of wheat (*Triticum aestivum* L.) germplasm using microsatellite markers, *Theor Appl Genet*, 105 (2002) 699-707.
- 22 Chakravarthi B K & Naravaneni R, SSR marker based DNA fingerprinting and diversity study in rice (*Oryza sativa*. L), *African J Biotechnol*, 8 (2006) 684-688.
- 23 Yang J, Sears R G, Gill B S & Paulsen G M, Quantitative and molecular characterization of heat tolerance in hexaploid wheat, *Euphytica*, 126 (2002) 275-282.
- 24 Zhang G, Chen L, Xiaq G, Xiaq Y, Chen X *et al*, Bulkcd segregant analysis to detect QTL related to heat tolerance in rice (*Oryza sativa* L.) using SSR markers, *Agri Sci China*, 8 (2009) 482-487.