

# Expression of receptor advanced glycation end products (RAGE) and histological picture of pancreatic $\beta$ -cells of streptozotocin-induced diabetic rats after yellow soybean powder suspension (*Glycine max*) administration

Dominggos Gonsalves<sup>1\*</sup>, Sri Lestari Sulisty<sup>2</sup>, Sri Kadarsih Soejono<sup>2</sup>.

<sup>1</sup>Public Health Polytechnic of the Ministry of Health, Kupang, East Nusa Tenggara,

<sup>2</sup>Department of Physiology, Faculty of Medicine, Universitas Gadjah Mada, Yogyakarta, Indonesia

## ABSTRACT

Diabetes mellitus is a multisystemic disease characterized by hyperglycemia due to defects in insulin secretion and action, or both. *Hyperglycemia* is the most important factor in the onset and progress of diabetic complications. Hyperglycemia increases the expression of receptor for advanced glycosylation end products (RAGE) which leads to pancreatic  $\beta$ -cells damage. Yellow soybean (*Glycine max*) is reported to contain isoflavones which have various biological properties including antidiabetes. Dietary soybean can prevent the progression of diabetic complications. This study was conducted to investigate the effects of yellow soybean powder suspension on expression of RAGE and pancreatic  $\beta$ -cells damage of diabetic rats. Thirty streptozotocin (STZ)-induced diabetic Sprague Dawley male rats aged 11-12 weeks with body weight 200-250 g were used in this study. The rats were divided into 5 groups with 6 rats in each group. Group 1 was non diabetic rats. Group 2 was diabetic rats without treatment. Group 3-5 were given yellow soybean powder suspension of 400, 800 and 1600 mg/kg BW for four weeks, respectively. At the end of the experiment, pancreases tissues were removed for examination of RAGE expression and pancreatic  $\beta$ -cells. The results showed that yellow soybean powder suspension ingestion significantly decreased blood glucose level of diabetic rats toward normality ( $p < 0.05$ ). Moreover, the percentage of RAGE expression on Group 3 ( $50.01 \pm 2.75\%$ ) and Group 2 ( $53.03 \pm 4.02\%$ ) were not significantly different ( $p > 0.05$ ). Meanwhile, the percentage of RAGE expression on Group 4 ( $42.43 \pm 4.08\%$ ) and Group 5 ( $40.62 \pm 3.42\%$ ) were significantly lower than Group 2 ( $p < 0.05$ ). The percentage of pancreatic  $\beta$ -cells on Group 2 ( $10.04 \pm 1.56\%$ ) was not significantly different compared to Group 3 ( $8.61 \pm 0.81\%$ ) ( $p > 0.05$ ), whereas the percentage of pancreatic  $\beta$ -cells in Group 4 ( $16.78 \pm 7.79\%$ ) and in Group 5 ( $22.03 \pm 11.51\%$ ) were significantly higher than Group 2 ( $p < 0.05$ ). In conclusion, yellow soybean powder suspension can decrease RAGE expression and prevent pancreatic  $\beta$ -cells damage on STZ-induced diabetic rats.

## ABSTRAK

Diabetes melitus adalah penyakit multisistemik ditandai dengan hiperglikemia akibat kerusakan sekresi dan atau aksi insulin. Hiperglikemia merupakan faktor paling penting bagi timbulnya dan perkembangan komplikasi diabetes. Hiperglikemia dapat meningkatkan ekspresi *receptor for advanced glycosylation end products* (RAGE) dan menyebabkan kerusakan sel  $\beta$  pankreas. Kedelai kuning (*Glycine max*) dilaporkan mengandung isoflavon yang mempunyai berbagai aktivitas biologis

---

\* corresponding author: salvesku@yahoo.com

termasuk antidiabetes. Diet kedelai dapat mencegah perkembangan komplikasi diabetes. Penelitian ini dilakukan untuk mengkaji efek suspensi bubuk kedelai kuning terhadap ekspresi RAGE dan kerusakan sel- $\beta$  pankreas tikus diabetes. Tigapuluh tikus jantan Sprague Dawley diabetes yang diinduksi streptozotocin (STZ) berumur 11-12 minggu dengan berat 200-250 g digunakan dalam penelitian ini. Tikus dibagi 5 kelompok, masing-masing kelompok 6 tikus. Kelompok 1 adalah tikus normal. Kelompok 2 adalah tikus diabetes tanpa perlakuan. Kelompok 3-5 adalah tikus diabetes diberi suspensi bubuk kedelai kuning berturut-turut dosis 400, 800 dan 1600 mg/kg BB selama 4 minggu. Di akhir penelitian, jaringan pankreas diambil untuk pemeriksaan RAGE dan sel  $\beta$  pankreas. Hasil penelitian menunjukkan bahwa pemberian suspensi bubuk kedelai kuning menurunkan secara nyata kadar gula darah tikus diabetes hingga normal ( $p < 0,05$ ). Selain itu, persentase ekspresi RAGE Kelompok 3 ( $50,01 \pm 2,75\%$ ) dengan Kelompok 2 ( $53,03 \pm 4,02\%$ ) tidak berbeda nyata ( $p > 0,05$ ). Sedangkan, persentase ekspresi RAGE Kelompok 4 ( $42,43 \pm 4,08\%$ ) dan Kelompok 5 ( $40,62 \pm 3,42\%$ ) lebih rendah secara nyata dengan Group 2 ( $p < 0,05$ ). Persentase sel  $\beta$  pankreas Kelompok 2 ( $10,04 \pm 1,56\%$ ) dengan Kelompok 3 ( $8,61 \pm 0,81\%$ ) tidak berbeda nyata ( $p > 0,05$ ). Sedangkan persentase sel  $\beta$  pankreas Kelompok 4 ( $16,78 \pm 7,79\%$ ) dan Kelompok 5 ( $22,03 \pm 11,51\%$ ) lebih tinggi secara nyata dari Kelompok 2 ( $p < 0,05$ ). Dapat disimpulkan, suspensi bubuk kedelai kuning dapat menurunkan ekspresi RAGE dan mencegah kerusakan sel- $\beta$  pankreas pada tikus diabetes yang diinduksi STZ.

**Keywords:** pancreatic  $\beta$  cells - Langerhans islets - streptozotocine - diabetic rats - soybeans

## INTRODUCTION

Diabetes mellitus (DM) is a multi-systemic disease characterized by hyperglycemia as the result of defects in insulin secretion, action, or both.<sup>1</sup> The prevalence of diabetes worldwide was estimated to be 2.8% in 2000 and 4.4% in 2030. The total number of people with diabetes was projected to rise from 171 million in 2000 to 366 million in 2030. In Indonesia, the people with DM reached 8.4 million in 2000 and it will be 21.3 million in 2030. Indonesia is the fourth country with the highest people with diabetes in the world after India, China dan USA.<sup>2</sup>

*Hyperglycemia* is the most important factor in the onset and progress of diabetic complications. Hyperglycemia is generally accepted to be the major cause of diabetic microvascular complications including nephropathy, neuropathy and vision disorders such as retinopathy, glaucoma, cataract and corneal disease. Moreover, hyperglycemia also plays an important role in the development of macrovascular diseases including cardiovascular disease, stroke and peripheral vascular

disease which can lead to ulcers, gangrene and amputation.<sup>3,4</sup>

Hyperglycemia causes cells oxidative damage by generation of reactive oxygen species (ROS) produced mainly through the glycation reaction resulting in advanced glycosylation end products (AGEs), a non-enzymatic reaction product of glucose.<sup>5</sup> Advanced glycosylation end products have been implicated in an increasing number of diabetic complications that result from, and in, oxidative damage due to ROS generation.<sup>6,7</sup> Advanced glycosylation end products are capable of damaging DNA either directly or by the generation of ROS through the activation of receptor for AGEs (RAGE).<sup>7,8</sup> Advanced glycosylation end products may directly influence the structural integrity of the vessel wall and underlying basement membranes through excessive cross linking of matrix molecules such as collagen and disruption of matrix-matrix and matrix-cell interactions.<sup>9,10</sup> In addition, binding of AGEs to RAGE in many cell types provokes a range of pathophysiological responses linked to the downstream activation of NF $\kappa$ B and other signalling

pathways that lead to ROS generation and certain pro inflammatory responses.<sup>11,12</sup>

Prevention and regeneration of further pancreatic  $\beta$ -cells damage are important in the management of DM to prevent its complications. The management of DM is a long term treatment to control hyperglycemia and hypoinsulinemia. The development and application of natural product are expected to control hyperglycemia, prevent pancreatic  $\beta$ -cells damage, repair insulin synthesis and secretion, and improve insulin resistance. Several studies have been conducted to evaluate effect of natural products to treat DM in animal model including black cummin (*Nigella sativa*),<sup>13,14</sup> cinnamon (*Cinnamomum zeylanicum*),<sup>15</sup> mahogany (*Swietenia mahagoni*),<sup>16</sup> and soybean (*Glycine max*).<sup>17</sup>

*Glycine max* or yellow soybean, locally known as *kedelai kuning*, is one of legumes used empirically to prevent and treat diseases associated with DM. Elevated intake of soybean legumes has been linked to a decreased risk of glucose intolerance<sup>18</sup> and type 2 diabetes.<sup>19,20</sup> Soybean is reported to contain isoflavones which have various biological properties including antidiabetes. Dietary soy isoflavones increase insulin secretion and prevent the development of diabetic cataracts in diabetic rats.<sup>21</sup> Moreover, dietary soybean can prevent the progression of diabetic rats and therefore nephropathy can be prevented.<sup>22</sup> The objective of this study was to investigate the effects of a yellow soybean powder suspension ingestion on RAGE expression and on pancreatic  $\beta$ -cells damage of streptozotocin (STZ)-induced diabetic rats.

## MATERIALS AND METHODS

### Preparation of the yellow soybean powder suspension

Yellow soybeans were purchased from a local market in Yogyakarta District. Soybean

seeds were washed with water and dried in an oven at 60°C for 30 minutes. Dried soybean seeds were then powdered with a blender. Soybean powder suspensions were then prepared in two mL water of each dose. Three different doses of suspensions were prepared for each rat group i.e. 400, 800 and 1600 mg/kg BW for this study.

### Animals and induction of diabetes

Thirty male Sprague Dawley rats (*Rattus norvegicus*) aged 11-12 weeks with body weight 200-250 g obtained from the Integrated Research and Testing Laboratory, Universitas Gadjah Mada, Yogyakarta were used in this study. The rats were housed at room temperature under 12 hour cycles of dark and light, were fed a standard food and provided an access to water *ad libitum*. After an acclimatization period of one week, rats were divided into 5 groups with 6 rats in each group. Group 1 as normal control was non diabetic rats. Group 2 as negative control was diabetic rats without treatment. Group 3-5 as treatment groups were given yellow soybean powder suspension of 400, 800 and 1600 mg/kg BW for each group, respectively.

Diabetic rats were induced by a single intraperitoneal injection of STZ at dose 60 mg/kg BW in 0.01 M at pH 4.5. Blood samples were collected from orbital sinus and blood glucose level was determined by using GOD PAP method before (day 0) and three days after STZ induction (day 3). Diabetic rats were confirmed if blood glucose level was >200 mg/dL. Two weeks after diabetic rats were confirmed, yellow soybean powder suspension were then ingested for four weeks.

Rats were sacrificed four weeks after the suspension ingestion and after blood glucose level determination (day 52). The rats were anesthetized using diethyl ether. A transverse

abdominal incision was made and pancreases and deudenom were removed from the rat. The pancreases tissues were then divided into two parts, the first part for immunohistochemical analysis of RAGE expression and the second part for histological examination of pancreatic  $\beta$ -cells. Fixed pancreases tissues were processed routinely for paraffin embedding. Serial sections of 5  $\mu$ m for each pancreas tissue sample were cut and placed on a poly L-lysine coated glass microscope slide.

### **Immunohistochemical analysis of RAGE expression**

The pancreas tissue sections were deparaffinized, rehydrated using a sequence of xylene, graded ethanol, water then washed in PBS. Briefly, antigen unmasking was performed by incubating the sections with a 50% trypsin : 50% vercene solution for 2 minutes. After being washed in water for 20 minutes, the sections were permeabilized in 0.1% Triton X-100 for 20 minutes, and rinsed in PBS (phosphate buffered saline solution). The sections were then blocked with endogenous peroxidase by incubating the slides with a 3%  $H_2O_2$  : 0.01% avidin for 5 minutes and washed in water. The next day, the sections were washed again in PBS and then incubated with primary monoclonal antibody anti-mouse RAGE (25  $\mu$ g/mL) overnight at 4°C. Following the incubation, the sections were washed in PBS and then incubated with a biotinylated secondary antibody for 30 minutes and washed again in PBS. The sections were incubated with a streptavidine peoxidase for 30 minutes at room temperature, washed in PBS and incubated with diaminobenzidine for 5-10 minutes. The sections were then lightly countersatined by haematoxylin, incubated for 30 second at room temperature and washed in water. The sections were then dried and coverslipped.

All sections were then examined and evaluated using light microscope. The RAGE expression in pancreatic  $\beta$ -cells of Langerhans islets was identified by a brown color of the cell, while a blue color of a cell indicated no expression of the RAGE. The RAGE expression was observed on five Langerhans islets and percentage of the RAGE expression was calculated using Cemek<sup>23</sup> formula after modification as follows:

$$\text{Percentage of RAGE expression in Langerhans islets} = \frac{\text{Total RAGE} +}{\text{Total cells}} \times 100$$

### **Histological examination of pancreatic $\beta$ -cells**

The pancreas tissue sections were deparaffinized and incubated with a mordant solution overnight at 37°C. The sections were rinsed in water and treated with an acidified potassium permanganate solution for 3 minutes. After being washed again in water, the sections were treated with 2-5% sodium bisulphite for 1 minute, washed well in water and in 70% alcohol. The sections were then stained with the Victoria Blue solution for 15 minutes at room temperature, washed in water and differentiated with 70% alcohol. The sections were then washed in running tap water fo 1 minute, dehydrated with 30% alcohol, cleared with xylol solution I, II and III and coverslipped.

All sections were then examined and evaluated using light microscope. The existence of pancreatic  $\beta$ -cells in Langerhans islets was demonstrated by blue cells. The existence of pancreatic  $\beta$ -cells was observed on five Langerhans islets and its percentage was calculated using Cemek<sup>23</sup> formula after modification as follows:

$$\text{Percentage pancreatic } \beta \text{- cells} = \frac{\text{Total b cells} +}{\text{Total cells} +} \times 100$$

### Statistical analysis

Data were presented as mean  $\pm$  standard deviation (SD) and analyzed using SPSS. The difference between blood glucose levels, RAGE expression in Langerhans islets and pancreatic  $\beta$  cell numbers between treatment groups with control groups were analyzed using Kruskal-Wallis test. The significant differences between groups were analyzed with Mann-Whitney test. A p value  $<0.05$  was accepted as statistically significant.

### RESULTS

Blood glucose level of normal (Group 1), diabetic (Group 2), yellow soybean powder

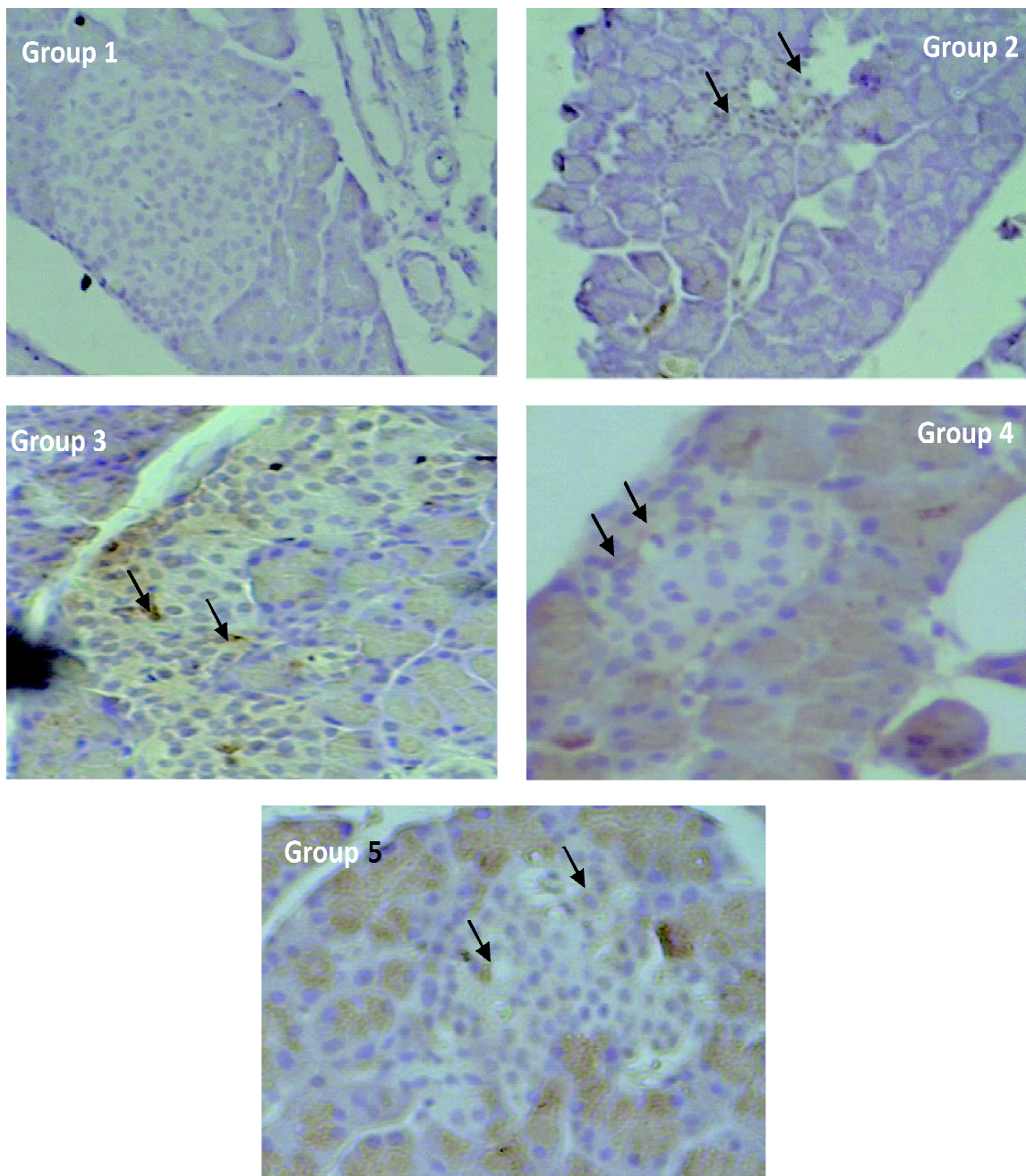
suspension diabetic (Group 3-5) groups on day 0, 3, and 52 after STZ induction are shown in TABLE 1. Before STZ injection (day 0), the blood glucose level of rats in all groups were in normal level. However, three days after STZ induction (day 3) rats in all groups had blood glucose level higher than 200 mg/dL indicating that rats were diabetic. Yellow soybean powder suspension ingestion for four weeks (Group 3-5) significantly decreased the blood glucose level of diabetic rats toward normality ( $<200$ mg/dL) ( $p<0.05$ ), whereas the blood glucose level of diabetic rats (Group 2) did not significantly decrease on day 52 after STZ injection ( $p>0.05$ ).

TABLE 1. Blood glucose level of normal, diabetic, yellow soybean powder suspension rat groups on day 0, 3, and 52 after STZ induction

| Groups                                     | n | Blood glucose level (Mean $\pm$ SD mg/dL) |                   |                    |
|--|---|---|-------------------|--------------------|
|  |   | Day 0                                     | Day 3             | Day 52             |
| 1. Normal rats + aquadest                  | 4 | 74.79 $\pm$ 1.00                          | 75.43 $\pm$ 1.30  | 78.40 $\pm$ 1.31   |
| 2. Diabetic rats + aquadest                | 3 | 76.05 $\pm$ 1.80                          | 219.63 $\pm$ 2.40 | 212.40 $\pm$ 15.70 |
| 3. Diabetic rats + suspension 400 mg/kg BW | 5 | 76.38 $\pm$ 1.40                          | 213.36 $\pm$ 6.80 | 188.61 $\pm$ 1.80  |
| 4. Diabetic rats + suspension 800 mg/kg BW | 5 | 75.21 $\pm$ 1.70                          | 219.61 $\pm$ 5.90 | 184.70 $\pm$ 1.50  |
| 5. Diabetic rats+ suspension 1600 mg/kg BW | 3 | 74.22 $\pm$ 0.90                          | 220.41 $\pm$ 1.30 | 179.32 $\pm$ 2.30  |

An example of RAGE expression in Langerhans islets from normal rats (Group 1), diabetic rats without treatment (Group 2), and diabetic rats after ingestion of yellow soybean powder suspension (Group 3-5) is shown in FIGURE 1. The positive RAGE expression was identified by a brown color of the cell (arrow heads). Mean percentage of RAGE expression in Langerhans islets from each group is presented in FIGURE 2. The lowest of RAGE expression was observed in Group 1 (5.71 $\pm$ 1.45%), while the highest was observed in

Group 2 (53.03 $\pm$ 4.02%). The mean percentage of the RAGE expression in Group 3 (50.01 $\pm$ 2.75%) was lower than Group 2, however it was not significantly different ( $p>0.05$ ), whereas, the mean percentage of the RAGE expression in Group 4 (42.43 $\pm$ 4.08%) and Group 5 (40.62 $\pm$ 3.42%) were significantly lower than Group 2 ( $p<0.05$ ). No significant difference in the mean percentage of the RAGE expression between Group 4 and Group 5 was observed in this study.



**FIGURE 1.** RAGE expression in Langerhans islets in normal rats (Group 1), diabetic rats without treatment (Group 2), and diabetic rats after ingestion of yellow soybean powder suspension (Group 3-5). Positive expression (arrow heads) is shown by brown staining. Magnification of 270x

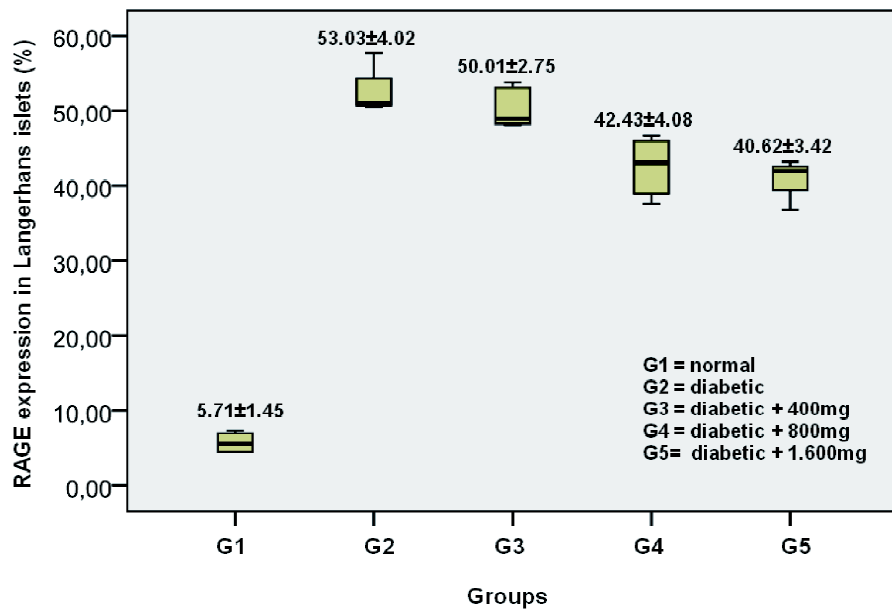


FIGURE 2. Percentage of RAGE expression in Langerhans islets in normal and diabetic rats without and after ingestion of yellow soybean powder suspension

An example of histology of pancreatic  $\beta$ -cells in Langerhans islets after Victoria Blue staining in normal rats (Group 1), diabetic rats without treatment (Group 2), and diabetic rats after ingestion of yellow soybean powder suspension (Group 3-5) is shown in FIGURE 3. Positive  $\beta$ -cells (arrow heads) is shown by blue staining. The highest of mean percentage of pancreatic  $\beta$ -cells was observed in Group 1 ( $40.21 \pm 8.68\%$ ), while the lowest was observed in Group 3 ( $8.61 \pm 0.81\%$ ). However, it was not

significantly different compared to Group 2 ( $10.04 \pm 1.56\%$ ) as control diabetic rats without ingestion of yellow soybean powder suspension ( $p > 0.05$ ). Meanwhile, the mean percentage of pancreatic  $\beta$ -cells in Group 4 ( $16.78 \pm 7.79\%$ ) and in Group 5 ( $22.03 \pm 11.51\%$ ) were significantly higher than Group 2 ( $p < 0.05$ ). No significant difference in mean percentage of pancreatic  $\beta$ -cells between Group 4 and 5 was observed in this study.

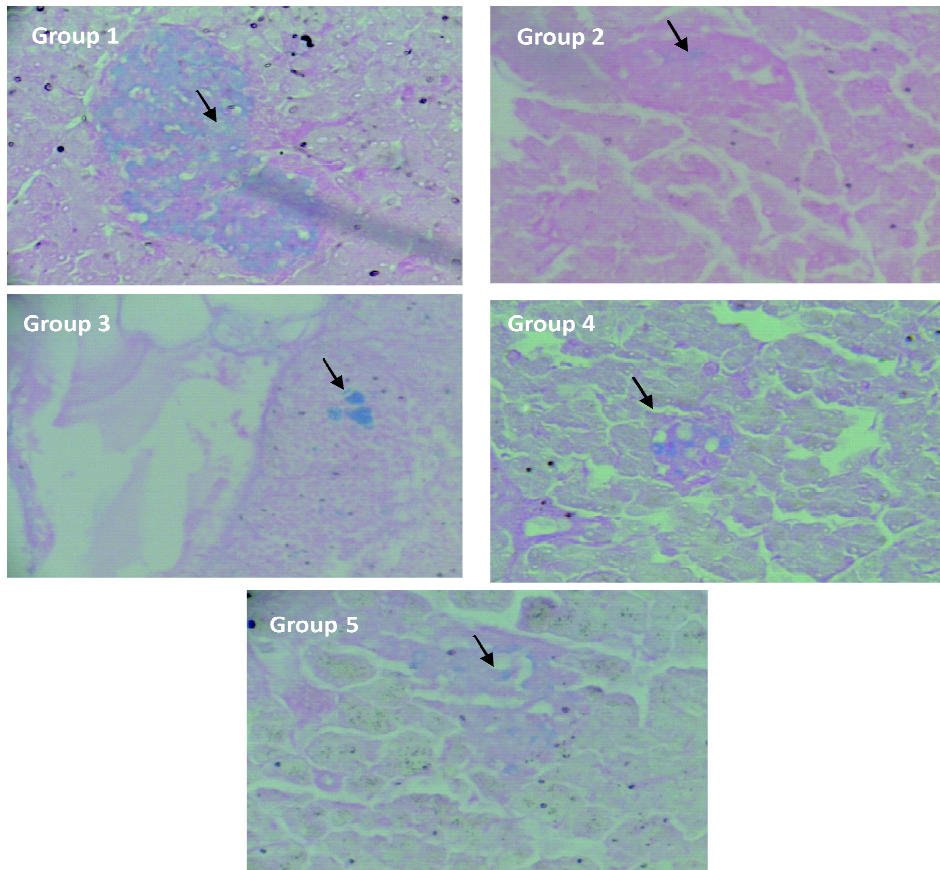


FIGURE 3. Histology of pancreatic  $\beta$ -cells in Langerhans islets after Victoria Blue staining in normal rats (Group 1), diabetic rats without treatment (Group 2), and diabetic rats after ingestion of yellow soybean powder suspension (Group 3-5). Positive  $\beta$ -cells (arrow heads) is shown by blue staining. Magnification of 540x

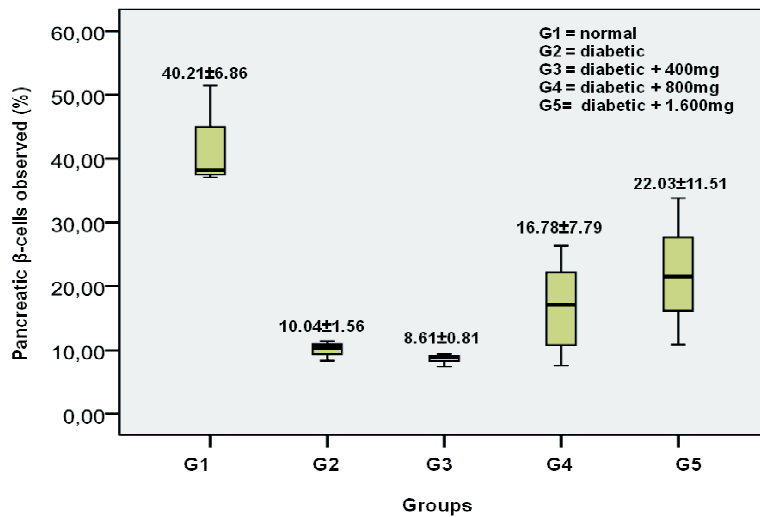


FIGURE 4. Pancreatic  $\beta$ -cells observed in Langerhans islets in normal and diabetic rats without and after ingestion of yellow soybean powder suspension



## DISCUSSION

In this study, it was shown that yellow soybean powder suspension ingestion at dose of 800 and 1600 mg/kg BW for four weeks significantly decreased the expression of RAGE in pancreatic  $\beta$ -cells of STZ-induced diabetic rats. Moreover, this suspension can prevent the  $\beta$ -cells damage due to STZ-induction. The effect of this suspension on inhibition of RAGE expression and prevention of  $\beta$ -cells damage can improve glycemic control as demonstrated with the decrease of blood glucose level of the diabetic rats.

The effect of yellow soybean on glycemic control both in animal model and human has been reported by some authors. Zimmermann *et al.*<sup>24</sup> reported that consumptions of soybean can improve glucose homeostasis and prevent the progression of diabetes in the db/db mice. Choi *et al.*<sup>25</sup> also reported that soybean may improve glycemic control and prevent the progression of diabetic nephropathy in rats. A soybean diet may prevent the weight loss and morphological disruption of the kidney associated with diabetes in rats. In addition, Xu *et al.*<sup>26</sup> suggested that soybean fibers can control blood glucose level, blood-lipid level by improving their metabolisms. Therefore, it can protect liver and renal damage of diabetic mice.

Soybean is reported to contain rich isoflavones which are well known as antioxidant with various biological properties including antidiabetes. Glyceollins, soy isoflavone phytoalexins, improve oral glucose disposal in prediabetic rats by increasing both the insulin-mediated and the basal, insulin-independent, glucose uptake by adipocytes.<sup>27</sup> Biochanin A, another soy isoflavone, showed antihyperglycemic effect on STZ-diabetic rats by decreasing activities of gluconeogenic enzymes such as glucose 6-phosphatase and fructose 1,6-

biphosphatase and by increasing glucokinase, glucose 6-phosphate dehydro-genase.<sup>28</sup>

Possible mechanisms underlying the effect of the yellow soybean on inhibition of RAGE expression and preservation of pancreatic  $\beta$ -cell damage are thought through antioxidant activities of soy isoflavones. Hyperglycemia causes the pancreatic  $\beta$ -cells oxidative damage by generation of ROS produced either directly or through the glycation reaction resulting in advanced glycosylation end products (AGEs). Moreover, AGEs are capable of damaging the pancreatic  $\beta$ -cells either directly or by the generation of ROS through the activation of RAGE.<sup>7,8</sup> As antioxidant, soy isoflavones can neutralize ROS produced under hyperglycemic conditions and maintain the integrity of cell membranes, and therefore prevent the pancreatic  $\beta$ -cells oxidative damage.<sup>29</sup>

## CONCLUSION

In conclusion, yellow soybean powder suspension ingestion for four weeks can significantly decrease the expression of RAGE of pancreatic  $\beta$ -cells on STZ-induction diabetic rats. Moreover, yellow soybean powder suspension can prevent the pancreatic  $\beta$ -cells damage due to STZ-induction.

## ACKNOWLEDGEMENTS

Authors would like to thank Mrs. Sabina Gero, SKp., MSc., as former Director and Mr. Jeffrey Sambara, SMF., Apt. as Director of Public Health Polytechnic, Ministry of Health, Kupang for their support during the study. Authors would also like to thank all technicians from Physiology Laboratory and Histology Laboratory, Faculty of Medicine, Universitas Gadjah Mada Yogyakarta for their valuable assistance during laboratory works.

## REFERENCES

1. American Diabetes Association. Diagnosis and classification of diabetes mellitus. *Diabetes Care* 2009;32(Suppl 1):S62-7.
2. Wild S, Roglic G, Green A, Sicree R, King H. Global prevalence of diabetes: estimates for the year 2000 and projections for 2030. *Diabetes Care* 2004; 27(5):1047-53.
3. Jakus V, Rietbrock N. Advanced glycation end-products and the progress of diabetic vascular complications. *Physiol Res* 2004; 53(2):131-42.
4. Fowler M. Microvascular and macrovascular complications of diabetes. *Clinical Diabetes* 2008; 26(2):77-82.
5. Mallidis C, Agbaje I, Rogers D, Glenn J, McCullough S, Atkinson AB, *et al.* Distribution of the receptor for advanced glycation end products in the human male reproductive tract: prevalence in men with diabetes mellitus. *Hum Reprod* 2007; 22(8):2169-77.
6. Bohlender JM, Franke S, Stein G, Wolf G. Advanced glycation end products and the kidney. *Am J Physiol Renal Physiol* 2005;289(4):F645-9.
7. Vlassara H, Palace MR. Diabetes and advanced glycation endproducts. *J Intern Med* 2002; 251(2):87-101.
8. Tanaka S, Avigad G, Brodsky B, Eikenberry EF. Glycation induces expansion of the molecular packing of collagen. *J Molec Biol* 1988; 203(2): 495-505.
9. Haitoglou CS, Tsilbary EC, Brownlee M, Charonis AS. Altered cellular interactions between endothelial cells and nonenzymatically glycosylated laminin/type IV collagen. *J Biol Chem* 1992; 267(18): 12404-7.
10. Chekir C, Nakatsuka M, Noguchi S, Konishi H, Kamada Y, Sasaki A, *et al.* Accumulation of advanced glycation end products in women with preeclampsia: possible involvement of placental oxidative and nitrative stress. *Placenta* 2006; 27(2-3):225-33.
11. Wautier JL, Schmidt AM. Protein glycation: a firm link to endothelial cell dysfunction. *Circ Res* 2004;95(3):233-8.
12. Wendt T, Tanji N, Guo J, Hudson BI, Bierhaus A, Ramasamy R, *et al.* Glucose, glycation, and RAGE: implications for amplification of cellular dysfunction in diabetic nephropathy. *J Am Soc Nephrol* 2003; 14(5):1383-95.
13. Salama RH. Hypoglycemic effect of lipoic acid, carnitine and *Nigella sativa* in diabetic rat model. *Int J Health Sci* 2011; 5(2):126-34.
14. Kanter M, Akpolat M, Aktas C. Protective effects of the volatile oil of *Nigella sativa* seeds on beta-cell damage in streptozotocin-induced diabetic rats: a light and electron microscopic study. *J Mol Histol* 2009; 40(5-6):379-85.
15. Ranasinghe P, Perera S, Gunatilake M, Abeywardene E, Gunapala N, *et al.* Effects of *Cinnamomum zeylanicum* (Ceylon cinnamon) on blood glucose and lipids in a diabetic and healthy rat model. *Pharmacognosy Res* 2012; 4(2):73-9.
16. De D, Chatterjee K, Ali KM, Bera TK, Ghosh D. Antidiabetic potentiality of the aqueous-methanolic extract of seed of *Swietenia mahagoni* (L.) Jacq. in streptozotocin-induced diabetic male albino rat: a correlative and evidence-based approach with antioxidative and antihyperlipidemic activities. *Evid Based Complement Alternat Med* 2011;892807. Doi: 10.1155/2011/892807.
17. Khushk I, Dohot MU, Baloach SA, Bhutto MA. The evaluation of soybean extracts in alloxan-induced diabetic rabbits. *World Appl Sci J* 2010; 8:22-5.
18. Feskens EJ, Virtanen SM, Rasanen L, Tuomilehto J, Stengard J, Pekkanen J, *et al.* Dietary factors determining diabetes and impaired glucose tolerance. A 20-year follow-up of the Finnish and Dutch cohorts of the Seven Countries Study. *Diabetes Care*. 1995; 18(8):1104-12.
19. Villegas R, Gao YT, Yang G, Li HL, Elasy TA, Zheng W, *et al.* Legume and soy food intake and the incidence of type 2 diabetes in the Shanghai Women's Health Study. *Am J Clin Nutr*. 2008; 87(1):162-7.
20. Nanri A, Mizoue T, Takahashi Y, Kirii K, Inoue M, Noda M, *et al.* Soy product and isoflavone intakes are associated with a lower risk of type 2 diabetes in overweight Japanese women. *J Nutr* 2010; 140(3):580-6.
21. Lu MP, Wang R, Song X, Chibbar R, Wang X, Wu L, *et al.* Dietary soy isoflavones increase insulin secretion and prevent the development of diabetic cataracts in streptozotocin-induced diabetic rats. *Nutr Res* 2008; 28(7):464-71.
22. Choi YE, Ahn SK, Lee WT, Lee JE, Park SH, *et al.* Soybean ameliorate diabetic nephropathy in rats. *Evid Based Complement Alternat Med* 2010; 7(4):433-40.

23. Cemek M, Kaða S, Sim°ek N, Büyükokurođlu ME, Konuk M. Antihyperglycemic and antioxidative potential of *Matricaria chamomilla* L. in streptozotocin-induced diabetic rats. *J Nat Med* 2008; 62(3):284-93.
24. Zimmermann C, Cederroth CR, Bourgoïn L, Foti M, Nef S. Prevention of diabetes in db/db mice by dietary soy is independent of isoflavone levels. *Endocrinology* 2012; 153(11):5200-11.
25. Choi YE, Ahn SK, Lee WT, Lee JE, Park SH, Yoon BB, Park KA. Soybean ameliorate diabetic nephropathy in rats. *Evid Based Complement Alternat Med* 2010; 7(4):433-40.
26. Xu H, Tan SM, Li SQ. Effects of soybean fibers on blood sugar, lipid levels and hepatic-nephritic histomorphology in mice with diabetes mellitus. *Biomed Environ Sci* 2001;14(3):256-61.
27. Boué SM, Isakova IA, Burow ME, Cao H, Bhatnagar D, Sarver JG, et al. Glyceollins, soy isoflavone phytoalexins, improve oral glucose disposal by stimulating glucose uptake. *J Agric Food Chem* 2012; 60(25):6376-82.
28. Harini R, Ezhumalai M, Pugalendi KV. Antihyperglycemic effect of biochanin A, a soy isoflavone, on streptozotocin-diabetic rats. *Eur J Pharmacol* 2012; 676(1-3):89-94.
29. Lacraz G, Figeac F, Movassat J, Kassis N, Coulaud J, Galinier A, et al. Diabetic beta-cells can achieve self-protection against oxidative stress through an adaptive up-regulation of their antioxidant defenses. *PLoS One* 2009;4(8):e6500. Doi: 10.1371/journal.pone.0006500.