

Combined Computational Intelligence Approach for the Power System Optimization Problem

Arif N. Afandi
Electrical Engineering
Universitas Negeri Malang
Malang, Jawa Timur, Indonesia
an.afandi@um.ac.id

Irham Fadlika
Electrical Engineering
Universitas Negeri Malang
Malang, Jawa Timur, Indonesia
irham.fadlika.ft@um.ac.id

Langlang Gumilar
Electrical Engineering
Universitas Negeri Malang
Malang, Jawa Timur, Indonesia
langlang.gumilar.ft@um.ac.id

Yuni Rahmawati
Electrical Engineering
Universitas Negeri Malang
Malang, Jawa Timur, Indonesia
yuni.rahmawati.ft@um.ac.id

Quota Alief Sias
Electrical Engineering
Universitas Negeri Malang
Malang, Jawa Timur, Indonesia
quota.alief.ft@um.ac.id

Irawan Dwi Wahyono
Electrical Engineering
Universitas Negeri Malang
Malang, Jawa Timur, Indonesia
irawan.dwi.ft@um.ac.id

Yunis Sulistyorini
Mathematics Education
IKIP Budi Utomo
Malang, Jatim, Indonesia
yunis.sulistyorini@gmail.com

Farrel Candra WA
SPAES Research Center
Batu, Jawa Timur, Indonesia
farrel.candrawinata@gmail.com

Michiko Ryyu Sakura A
SPAES Research Center
Batu, Jawa Timur, Indonesia
michiko.ryuusakura@gmail.com

Abstract—A power system optimization is one of the major problems in the operating performances of the existing system. This problem takes place on the various technical cases to get optimal conditions of the system. Moreover, many approaches have been implemented to carry out the solution under operational constraints. This paper presents Thunderstorm Algorithm (TA) and Artificial Salmon Tracking Algorithm (ASTA) for defining the optimal strategy of the power system optimization based on the unit commitment. Both algorithms are tested on the IEEE-62 bus system, whereas, results show that ASTA and TA can be combined together to solve the power system problem. These algorithms have been applied to predict the power consumption and it has good performances while searching for the optimal solution. These results also show that the economic dispatch problem is conducted to the power production while the algorithm is performed in good characteristics.

Keywords—algorithm; dispatch; emission; optimization; power

I. INTRODUCTION

One of the optimization problems on the power system operation is a unit commitment (UC) which is consisted of the various generating unit combination. The UC is used to fulfill the energy customer service which is correlated with the total power demand. Technically, the power demand is one of the most considerations on the power production. This factor is associated with energy usages on the consumer site patterns related to the UC over the day, night, week, seasons and holidays. Deal with this condition, a demand forecasting strategy is a very important policy to meet the power production in the behavior of the energy players. In addition, the optimal power production is also urgent to cover all possible combination between existing power plants as a unit commitment. The UC is commonly approached using an economic dispatch (ED) problem [1]–[7] while the optimal allocation of power outputs belongs to the various generators available to serve the load [8]–[11] considering

also an emission dispatch (EmD) problem for decreasing pollutants [6], [12]–[14].

Presently, the ED and EmD are an important optimization problem in the power system operation which can be solved using various techniques. An intelligent computation (IC) is more popular than classical approaches to carrying out this problem [7], [9], [15]–[20]. Since an early idea of the IC, many methods have been proposed based on own inspirations [13], [21] and many natural phenomena or biological processes have been also adopted as the inspiration [12], [21], [22]. Currently, many algorithms have also been proposed which are conducted to phenomena or entities in nature [22]–[26]. These versions have been advanced to increase computational performances through hierarchies and procedures for sequencing orders of the algorithm [8], [14], [27]. In line with previous efforts, this paper presents an emphasizing of thunderstorm mechanism and salmon tracking applied to the power system problem considered various operational limitations.

II. ALGORITHMS OVERVIEW

Many computational bits of intelligence are developed based on the natural phenomenon and behavior [21], [28]–[31]. In these works, one other is adopted from thunderstorm mechanisms which are recognized by cloud shapes and a pre-signal. In nature, these mechanisms are mitigated from the charge ignition for the interaction between the negative charge [30], [32], [33]. In detail, the Thunderstorm Algorithm (TA) is depicted in Fig. 1 with transforming structures in computation processes are Cloud Phase: Streamer Phase; and Avalanche Phase [8], [11], [34]. This figure illustrated a striking propagation from the sky to earth as a charge moving direction.

In particular, artificial salmon tracking algorithm (ASTA) is also presented in these studies which are designed as given Fig. 2. ASTA is adopted from behaviors of Salmon fish in nature while the salmon run is the

moving time migrated from the ocean, swim to the upper reaches of rivers where spawning on gravel beds [35]. Many works were explored and developed to understand the migration situation [28], [29], [31], [35]. In these works, ASTA is presented in computational parameters cover salmon number, surviving factor, mouth river, tracking round, migrating period. As given in Fig. 2, these parameters are covered for Exploring behaviors and Surviving behaviors.

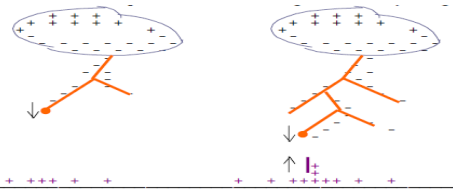


Fig. 1. Illustration of the striking propagation

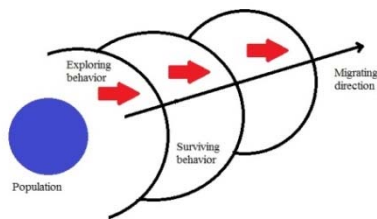


Fig. 2. Principles of the artificial salmon tracking algorithm

III. METHOD AND APPROACH

Many technical problems are approached using a model which is used to fit the data, simulation, and forecasting. A model can also be used to plan the amount of evaluation required to meet desired levels in various fields [1]–[5]. In addition, the model is used to find the optimal allocation of the UC among the various generators available to serve the load [8]–[11], [34], [36]–[38]. Recently, many strategies are developed to explore a UC considering the fuel cost, emission, transmission line losses, weighting factors, and others [5], [23]–[25]. In these works, the UC covers ED and EmD problems as discussed in [6], [12]–[14] and integrated to become an economic and emission dispatch (EED) problem under operational limitations [14], [25], [39]–[41]. Furthermore, many works have used the EED to describe some economical measurements on the desirable targets [4], [14], [38], [42], [43]. In these studies, the EED is formulated using mathematical statements for defining the objective function and technical constraints [6], [10], [26], [39] considering the IEEE-62 bus system as a sample model of the power system. This model consists of 62 buses; 89 lines; and 32 load buses. This system is also supported by 19 generating units. In addition, this system is constrained by 10% of the loss limit; 0.5 of the weighting factor; and 0.85 kg/h of the emission standard; 5% of voltage violations; 95% of the power transfer capability; and banded on upper and lower power limits.

Moreover, TA and ASTA are designed based on its structures and procedures whereas both interactions are illustrated in Fig 3. TA is implemented on a standard model of the power system based on the sequencing orders as depicted in Fig. 1 while ASTA uses Fig. 2 for the

processes. In these works, TA is compiled using the cloud phase; streamer phase; and avalanche phase in terms of 1 of the avalanche; 25 of the cloud charge; 100 of the streaming flow; and 4 of the hazardous factor. On the other hand, ASTA is also compiled based pseudo-codes covered for the salmon number, surviving factor, mouth river, tracking round, migrating period. In details, ASTA is presented using 100 of the salmon number, 0.25 of a surviving factor, 100 of the mouth river, 100 of the tracking round, 1 of the Migrating period, and 50 of the population. Based on Fig. 3, the procedures are subjected to the Objective function, TA processes, Unit Commitment, ASTA processes, and the updating processes.

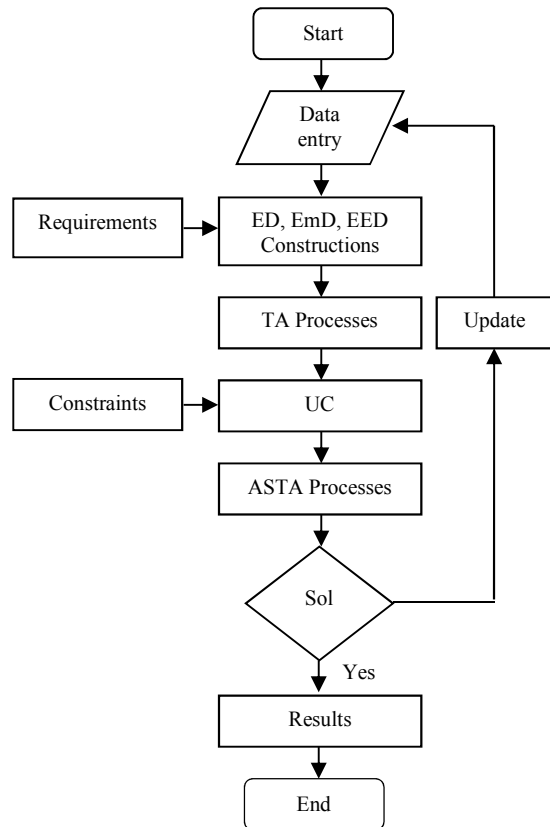


Fig. 3. TA and ASTA interaction

IV. RESULTS AND DISCUSSION

In this section, the system is modeled using IEEE-62 bus system with main parameters of generating units are listed in Table I. This table informs for the coefficients and power limits. Moreover, graphical performances of the computation are given in Fig. 4 and Fig. 5. From these figures, it is known that Fig. 4 illustrates a computational convergence speed which is searched in 17 iterations while these compiling processes need 82.1 s. Moreover, the optimal solution of the EED is 12,005.6 \$/h after started at 17,408.2 \$/h at the first step. This characteristic also describes that the computation is performed in smooth and stable processes with the consuming time is given in Fig. 5. In total, this simulation is completed in 533.3 s. In these works, the simulation is addressed to evaluate a computing ability while searching the optimal solution of the EED problem as the optimal power production based on the IEEE 62 bus system considering several requirements and constraints. By considering 2,221.2 MW of the power

load, the system has produced 2,387.9 MW from existed generating units. It means that this operation has 166.7 MW of the total power loss or around 6.9%.

TABLE I. GENERATING UNIT COEFFICIENTS

Gen	Fuel Cost			Emission			Limit	
	a (\$/MWh ²)	b (\$/MWh)	c	α (kg/MWh ²)	β (kg/MWh)	γ	Pmin (MW)	Pmax (MW)
G1	0.00700	6.80	95	0.0180	-1.8100	24.300	50	300
G2	0.00550	4.00	30	0.0330	-2.5000	27.023	50	450
G3	0.00550	4.00	45	0.0330	-2.5000	27.023	50	450
G4	0.00250	0.85	10	0.0136	-1.3000	22.070	0	100
G5	0.00600	4.60	20	0.0180	-1.8100	24.300	50	300
G6	0.00550	4.00	90	0.0330	-2.5000	27.023	50	450
G7	0.00650	4.70	42	0.0126	-1.3600	23.040	50	200
G8	0.00750	5.00	46	0.0360	-3.0000	29.030	50	500
G9	0.00850	6.00	55	0.0400	-3.2000	27.050	0	600
G10	0.00200	0.50	58	0.0136	-1.3000	22.070	0	100
G11	0.00450	1.60	65	0.0139	-1.2500	23.010	50	150
G12	0.00250	0.85	78	0.0121	-1.2700	21.090	0	100
G13	0.00500	1.80	75	0.0180	-1.8100	24.300	50	300
G14	0.00450	1.60	85	0.0140	-1.2000	23.060	0	150
G15	0.00650	4.70	80	0.0360	-3.0000	29.000	0	500
G16	0.00450	1.40	90	0.0139	-1.2500	23.010	50	150
G17	0.00250	0.85	10	0.0136	-1.3000	22.070	0	100
G18	0.00450	1.60	25	0.0180	-1.8100	24.300	50	300
G19	0.00800	5.50	90	0.0400	-3.0000	27.010	100	600

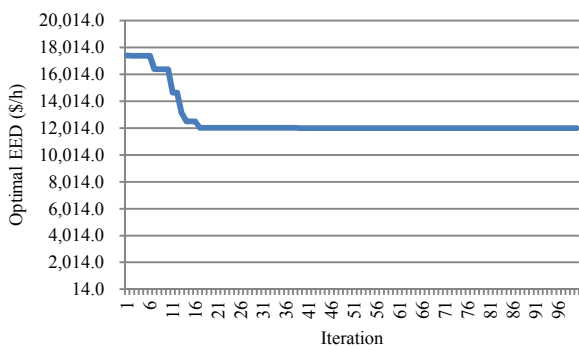


Fig. 4. Computational speed of the optimal solution

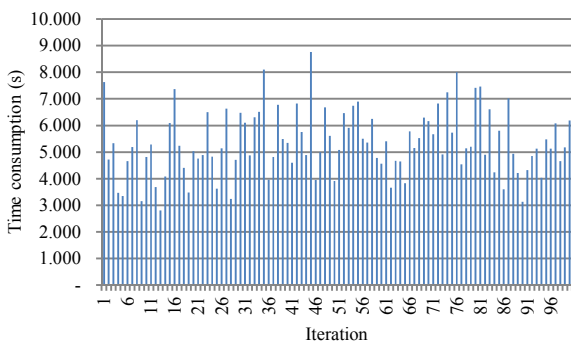


Fig. 5. Computational time consumption

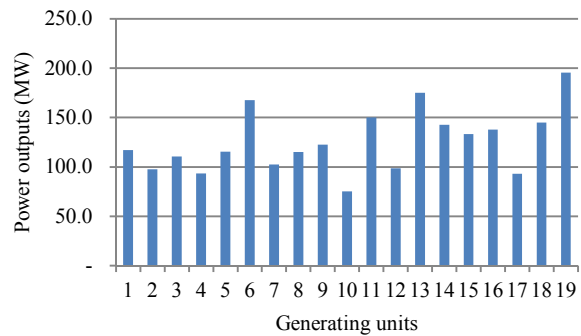


Fig. 6. Individual generating unit commitment

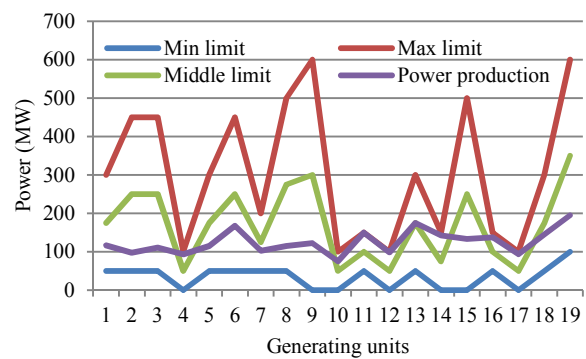


Fig. 7. Power production evaluation

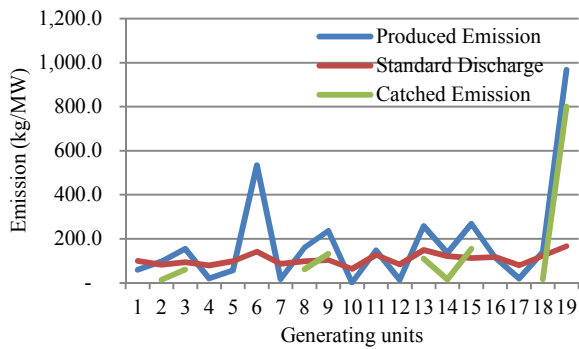


Fig. 8. Emission effects of generating units

TABLE II. OPERATING COST OF GENERATING UNITS

Gen	Power (MW)	Fuel cost (\$)	Emission Compensation (\$)	Operating Cost (\$)
G1	117.2	988.1	0	988.1
G2	97.5	472.3	10.6	482.9
G3	110.6	554.9	45.2	600.1
G4	93.4	111.2	0	111.2
G5	115.6	631.8	0	631.8
G6	167.5	914.3	293.8	1,208.1
G7	102.6	592.6	0	592.6
G8	115.0	720.2	46.8	767.0
G9	122.6	918.3	98.8	1,017.1
G10	75.3	107.0	0	107.0
G11	150.0	406.3	15.6	421.8
G12	98.7	186.2	0	186.2
G13	175.0	543.1	82.5	625.7
G14	142.5	404.4	11.4	415.8
G15	133.2	821.2	116.1	937.3
G16	137.9	368.6	0	368.6
G17	93.2	110.9	0	110.9
G18	144.8	351.1	12.4	363.5
G19	195.3	1,469.3	600.6	2,069.9
Total	2,387.9	10,671.8	1,333.8	12,005.6

As the implication of this unit commitment, generating units also produce individually power outputs within various portions of the pollution as detailed in Fig. 6. In addition, the system operation is also required by many conditions and situations. By considering the operating in terms of maximum, minimum, and middle limits, the power production is evaluated as depicted in Fig. 7. This figure informs the condition of each generating unit on the base of the power capability to give a contribution to the UC. In particular, caused by over standard productions, the generating unit gives an environmental effect as illustrates in Fig. 8. These emissions should be filtered at generating units around 1,778.4 kg/h. In total, generating units release in 3,398.6 kg/MW of the emission even it is permitted only 1,029.7 kg/MW under an emission standard. Economically, the system is optimized in 12,005.6 \$/h for the operating cost covered the fuel procurement and the emission compensation. In particular, Table II presents the details of the operating fee. The fuel consumption needs 10,671.8 \$/h while 1,333.8 \$/h is used for the pollutant compensation. This table also informs that generating units take place on different power capacities to cover the total load demand. Moreover, the system has

released the pollutant in various results over under environmental standard. Several generating units are still operated with the lower pollution is associated with the emission compensation fee.

V. CONCLUSION

In general TA and ASTA can be combined to solve the problem applied to an IEEE-62 bus system. These algorithms have used to search the optimal balance of cost and emission aspects. Results show that the problem is carried out in various power outputs, emission discharges, and optimized operating costs while the optimal point is obtained. Moreover, real applications are devoted.

ACKNOWLEDGMENT

The authors gratefully acknowledge the support of Universitas Negeri Malang, Indonesia, for the PNPB Research Grant issued on 21.2.6/UN32.14/LT/2018.

REFERENCES

- [1] A. N. Afandi, "Optimal scheduling power generations using HSABC algorithm considered a new penalty factor approach," in *The 2nd IEEE Conference on Power Engineering and Renewable Energy (ICPERE) 2014*, 2014, pp. 13–18.
- [2] S. Chandra, V. Kothari, and M. Sharma, "A model for controlling variance in the Artificial Bee Colony algorithm," in *2015 International Conference on Advances in Computing, Communications and Informatics (ICACCI)*, 2015, pp. 263–269.
- [3] A. N. Afandi, *Optimal Solution of the EPED Problem Considering Space Areas of HSABC on the Power System Operation*, vol. 7. 2015.
- [4] N. Tutkun, O. Can, and A. N. Afandi, "Low cost operation of an off-grid wind-PV system electrifying residential homes through combinatorial optimization by the RCGA," in *2017 5th International Conference on Electrical, Electronics and Information Engineering (ICEEIE)*, 2017, pp. 38–42.
- [5] M. El-Shimy, M. A. Attia, N. Mostafa, and A. N. Afandi, "Performance of grid-connected wind power plants as affected by load models: A comparative study," in *2017 5th International Conference on Electrical, Electronics and Information Engineering (ICEEIE)*, 2017, pp. 1–8.
- [6] A. Gupta, K. K Swarnkar, and K. Wadhvani, *Combined Economic Emission Dispatch Problem using Particle Swarm Optimization*, vol. 49. 2012.
- [7] S. Fadil and B. Urazel, "A security constrained environmental/economic power dispatch technique using F-MSG algorithm for a power system area including limited energy supply thermal units," *International Journal of Electrical Power & Energy Systems*, vol. 56, no. Supplement C, pp. 185–197, Mar. 2014.
- [8] A. N. Afandi and Y. Sulistyorini, "Thunderstorm Algorithm for Determining Unit Commitment in Power System Operation," *Journal of Engineering and Technological Sciences*, vol. 48, no. 6, pp. 743–752, Dec. 2016.

- [9] Y. Li, S. Miao, X. Luo, and J. Wang, "Optimization model for the power system scheduling with wind generation and compressed air energy storage combination," in *2016 22nd International Conference on Automation and Computing (ICAC)*, 2016, pp. 300–305.
- [10] A. N. Afandi, I. Fadlika, and A. Andoko, "Comparing Performances of Evolutionary Algorithms on the Emission Dispatch and Economic Dispatch Problem," *TELKOMNIKA (Telecommunication Computing Electronics and Control)*, vol. 13, no. 4, pp. 1187–1193, Dec. 2015.
- [11] A. N. Afandi *et al.*, "Designed Operating Approach of Economic Dispatch for Java Bali Power Grid Areas Considered Wind Energy and Pollutant Emission Optimized Using Thunderstorm Algorithm Based on Forward Cloud Charge Mechanism," *International Review of Electrical Engineering (IREE)*, vol. 13, p. 59, Feb. 2018.
- [12] A. N. Afandi, Y. Sulistyorini, H. Miyauchi, G. Fujita, X. Z. Gao, and M. El-Shimy, "The Penetration of Pollutant Productions on Dynamic Generated Power Operations Optimized Using a Novel Evolutionary Algorithm," *International Journal on Advanced Science, Engineering and Information Technology*, vol. 7, no. 5, pp. 1825–1831, Oct. 2017.
- [13] A. N. Afandi, "Solving Combined Economic and Emission Dispatch Using Harvest Season Artificial Bee Colony Algorithm Considering Food Source Placements and Modified Rates," *International journal on electrical engineering and informatics*, vol. Vol. 6, p. 267, Jul. 2014.
- [14] M. S. Syed, A. R. Syed, and Y. S. Rao, "A novel seeker optimization approach for solving combined economic and emission dispatch," in *2013 International Conference on Power, Energy and Control (ICPEC)*, 2013, pp. 371–376.
- [15] A. N. Afandi, I. Fadlika, and Y. Sulistyorini, "Solution of dynamic economic dispatch considered dynamic penalty factor," in *2016 3rd Conference on Power Engineering and Renewable Energy (ICPERE)*, 2016, pp. 241–246.
- [16] F. H. Aghdam and M. T. Hagh, "Security Constrained Unit Commitment (SCUC) formulation and its solving with Modified Imperialist Competitive Algorithm (MICA)," *Journal of King Saud University - Engineering Sciences*, Aug. 2017.
- [17] L. Wu, J. Gao, Y. Wang, and R. G. Harley, "A survey of contingency analysis regarding steady state security of a power system," in *2017 North American Power Symposium (NAPS)*, 2017, pp. 1–6.
- [18] A. N. Afandi, "Weighting Factor Scenarios for Assessing the Financial Balance of Pollutant Productions and Fuel Consumptions on the Power System Operation," *Wseas Transactions On Business And Economics*, vol. 14, 2017.
- [19] D. Arengga, W. Agustin, Y. Rahmawati, S. Sendari, and A. N. Afandi, "SPEKTRA fast and smart software for renewable energy management," *IOP Conf. Ser.: Earth Environ. Sci.*, vol. 105, no. 1, p. 012077, Jan. 2018.
- [20] A. R. Bergen and D. J. Hill, "A Structure Preserving Model for Power System Stability Analysis," *IEEE Transactions on Power Apparatus and Systems*, vol. PAS-100, no. 1, pp. 25–35, Jan. 1981.
- [21] A. N. Afandi, "Thunderstorm Algorithm for Assessing Thermal Power Plants of the Integrated Power System Operation with an Environmental Requirement," *International Journal of Engineering and Technology*, vol. 8, pp. 1102–1111, Apr. 2016.
- [22] A. N. Afandi and H. Miyauchi, "Improved artificial bee colony algorithm considering harvest season for computing economic dispatch on power system," *IEEJ Trans Elec Electron Eng*, vol. 9, no. 3, pp. 251–257, May 2014.
- [23] K. Chandram, N. Subrahmanyam, and M. Sydulu, "Equal embedded algorithm for economic load dispatch problem with transmission losses," *International Journal of Electrical Power & Energy Systems*, vol. 33, no. 3, pp. 500–507, Mar. 2011.
- [24] C. C. Columbus and S. P. Simon, "A parallel ABC for security constrained economic dispatch using shared memory model," in *Controls and Computation 2012 International Conference on Power, Signals*, 2012, pp. 1–6.
- [25] B. Y. Qu, Y. S. Zhu, Y. C. Jiao, M. Y. Wu, P. N. Suganthan, and J. J. Liang, "A survey on multi-objective evolutionary algorithms for the solution of the environmental/economic dispatch problems," *Swarm and Evolutionary Computation*, Jun. 2017.
- [26] M. Zheng, X. Wang, C. J. Meinrenken, and Y. Ding, "Economic and environmental benefits of coordinating dispatch among distributed electricity storage," *Applied Energy*, vol. 210, no. Supplement C, pp. 842–855, Jan. 2018.
- [27] L. Lei and W. Shaoqiang, "An Improved Ant Colony Optimization Algorithm Using Local Pheromone and Global Pheromone Updating Rule," in *2016 International Conference on Intelligent Transportation, Big Data Smart City (ICITBS)*, 2016, pp. 63–67.
- [28] A. B. Kristoffersen, D. Jimenez, H. Viljugrein, R. Grøntvedt, A. Stien, and P. A. Jansen, "Large scale modelling of salmon lice (*Lepeophtheirus salmonis*) infection pressure based on lice monitoring data from Norwegian salmonid farms," *Epidemics*, vol. 9, pp. 31–39, Dec. 2014.
- [29] A. B. Kristoffersen, L. Qviller, K. O. Helgesen, K. W. Vollset, H. Viljugrein, and P. A. Jansen, "Quantitative risk assessment of salmon louse-induced mortality of seaward-migrating post-smolt Atlantic salmon," *Epidemics*, vol. 23, pp. 19–33, Jun. 2018.
- [30] X.-M. Shao, E. H. Lay, and A. R. Jacobson, "Reduction of electron density in the night-time lower ionosphere in response to a thunderstorm,"

- Nature Geoscience*, vol. 6, no. 1, pp. 29–33, Jan. 2013.
- [31] K. W. Vollset, B. T. Barlaup, H. Skoglund, E. S. Normann, and O. T. Skilbrei, “Salmon lice increase the age of returning Atlantic salmon,” *Biology Letters*, vol. 10, no. 1, pp. 20130896–20130896, Jan. 2014.
- [32] R. L. Holle, “The visual identification of lightning-producing thunderstorm clouds,” in *2014 International Conference on Lightning Protection (ICLP)*, 2014, pp. 58–64.
- [33] G. Sători *et al.*, “An Overview of Thunderstorm-Related Research on the Atmospheric Electric Field, Schumann Resonances, Sprites, and the Ionosphere at Sopron, Hungary,” *Surv Geophys*, vol. 34, no. 3, pp. 255–292, May 2013.
- [34] A. N. Afandi, Y. Sulistyorini, G. Fujita, N. P. Khai, and N. Tutkun, “Renewable energy inclusion on economic power optimization using thunderstorm algorithm,” in *2017 4th International Conference on Electrical Engineering, Computer Science and Informatics (EECSI)*, 2017, pp. 1–6.
- [35] S. L. Haeseker, R. M. Peterman, Z. Su, and C. C. Wood, “Retrospective Evaluation of Preseason Forecasting Models for Sockeye and Chum Salmon,” *North American Journal of Fisheries Management*, vol. 28, no. 1, pp. 12–29.
- [36] Y. Rahmawati *et al.*, “Developing a simulator of renewable energy as a learning media of energy conversion,” *IOP Conference Series: Earth and Environmental Science*, vol. 105, p. 012079, Jan. 2018.
- [37] K. B. Debnath and M. Mourshed, “Forecasting methods in energy planning models,” *Renewable and Sustainable Energy Reviews*, vol. 88, pp. 297–325, May 2018.
- [38] M. EL-Shimy, N. Mostafa, A. N. Afandi, A. M. Sharaf, and M. A. Attia, “Impact of load models on the static and dynamic performances of grid-connected wind power plants: A comparative analysis,” *Mathematics and Computers in Simulation*, Feb. 2018.
- [39] T. Sabo, “A Survey on Environmental Economic Load Dispatch using Lagrange Multiplier Method,” 2012.
- [40] N. Ghorbani, E. Babaei, and F. Sadikoglu, “Exchange market algorithm for multi-objective economic emission dispatch and reliability,” *Procedia Computer Science*, vol. 120, pp. 633–640, 2017.
- [41] S. Ghoshal, D. Maity, S. Banerjee, and C. K. Chanda, “Solution of multi-objective emission economic dispatch using bare bones TLBO algorithm biogeography based optimization algorithm,” in *2017 Second International Conference on Electrical, Computer and Communication Technologies (ICECCT)*, 2017, pp. 1–6.
- [42] A. N. Afandi, “Optimal scheduling power generations using HSABC algorithm considered a new penalty factor approach,” in *The 2nd IEEE Conference on Power Engineering and Renewable Energy (ICPERE) 2014*, 2014, pp. 13–18.
- [43] L. A. C. Roque, D. B. M. M. Fontes, and F. A. C. C. Fontes, “A multi-objective unit commitment problem combining economic and environmental criteria in a metaheuristic approach,” *Energy Procedia*, vol. 136, no. Supplement C, pp. 362–368, Oct. 2017.