

Letter to the Editor

Differential profile of CDKN1A and TP53 expressions in bone marrow mesenchymal stromal cells from myeloid neoplasms



Dear Editor,

Attention has been increasingly focused on the role of the bone marrow microenvironment in the pathogenesis and progression of hematological malignancies, including myelodysplastic syndromes (MDS) and acute myeloid leukemia (AML).^{1–3} Thus, the identification of genes or proteins that are differentially expressed in the abnormal bone marrow niche may provide new therapeutic opportunities and perspectives on the biology of these diseases. In a recent report by Fei et al.,⁴ bone marrow mesenchymal stromal cells (BMMSCs) from MDS patients presented an upregulation of *p21* and *p53* expressions, suggesting that activation of this pathway may contribute to the senescent behavior of these cells.⁴ In contrast, another study that also analyzed the expression profile of senescence-related genes in BMMSCs from MDS and healthy donors observed a downregulation of *CDKN1A* expression, but no modulation in *TP53* expression.⁵

To provide additional evidence on *p21* and *p53* expression in MDS BMMSCs, we verified the expression of these genes in a cohort of eight healthy donors with median age of 45 years (range: 28–57), 23 MDS patients with median age of 70 years (range: 16–90), seven AML patients with myelodysplasia-related changes (AML-MRC) with median age of 69 years (range: 30–86) and 12 *de novo* AML cases according to the WHO 2008 classification, with median age of 61 years (range: 44–82).⁶ The MDS group was comprised of one refractory cytopenia with unilineage dysplasia (RCUD), four refractory anemia with ringed sideroblasts (RARS), 12 refractory cytopenia with multilineage dysplasia (RCMD), two refractory anemia with excess blast-1 (RAEB-1) and four refractory anemia with excess blast-2 (RAEB-2). Bone marrow mononuclear cells were isolated by Ficoll-Hypaque plus density-gradient centrifugation (GE Healthcare, Uppsala, Sweden) and cultured in Dulbecco's Modified Eagle's Medium (DMEM; Gibco, Grand Island, NY, USA) supplemented with 10% fetal bovine serum (FBS), penicillin/streptomycin and

maintained at 37 °C, normoxia with 5% CO₂. After the fourth passage, all patient and control-derived BMMSCs presented a homogeneous cell population (negative for CD31, CD34, CD45 and HLA-DR, and positive for CD73, CD90 and CD105), confirming their mesenchymal origin, according to the International Society for Cellular Therapy.⁷ Next, these samples were used for gene expression analysis by quantitative polymerase chain reaction (qPCR) in a ABI 7500 Sequence Detection System (Applied Biosystem, Foster City, CA, USA) using specific primers for *CDKN1A* (*p21* – FW: TGTCAGTGTCTTG-TACCCTTGT; RV: GCCGGCGTTGGAGTGGTAG), *TP53* (*p53* – FW: GGCGCACAGAGGAAGAGAAT; RV: GGAGAGGAGCTGGT-GTTGTTG), and *HPRT1* (FW: GAACGTCTTGCTCGAGATGTGA; RV: TCCAGCAGGTCAGCAAAGAAT). The relative gene expression was calculated using the equation, $2^{-\Delta\Delta CT}$.⁸ Statistical analyses were performed by ANOVA and Bonferroni post-test using GraphPad Prism 5 (GraphPad Software, Inc., San Diego, CA, USA); a *p*-value <0.05 was considered statistically significant.

In our cohort, BMMSCs from *de novo* AML presented increased *CDKN1A* mRNA levels compared to healthy donors, MDS and AML-MRC patients (*p*-value <0.05; **Figure 1A**). *TP53* expression was also higher in *de novo* AML compared to healthy donors and AML-MRC patients (*p*-value <0.05; **Figure 1B**). However, we observed no differences in *CDKN1A* and *TP53* mRNA levels in BMMSCs from MDS and AML-MRC patients compared to healthy donors (*p*-value >0.05; **Figure 1**). When MDS patients were stratified by the WHO 2008 classification, no differences were observed between RCUD/RARS/RCMD, RAEB-1/RAEB-2, AML-MRC and healthy donors (*p*-value >0.05; **Figure 1**).

Existing data on MDS-derived BMMSC biology are somewhat controversial, reflecting differences in methodologies and the heterogeneity of patients.⁹ There is evidence that different culture media can significantly influence the phenotype of mesenchymal cells.^{10,11} Thus, the lack of optimization of cell isolation techniques and expansion conditions may influence the gene expression profile and the identification of

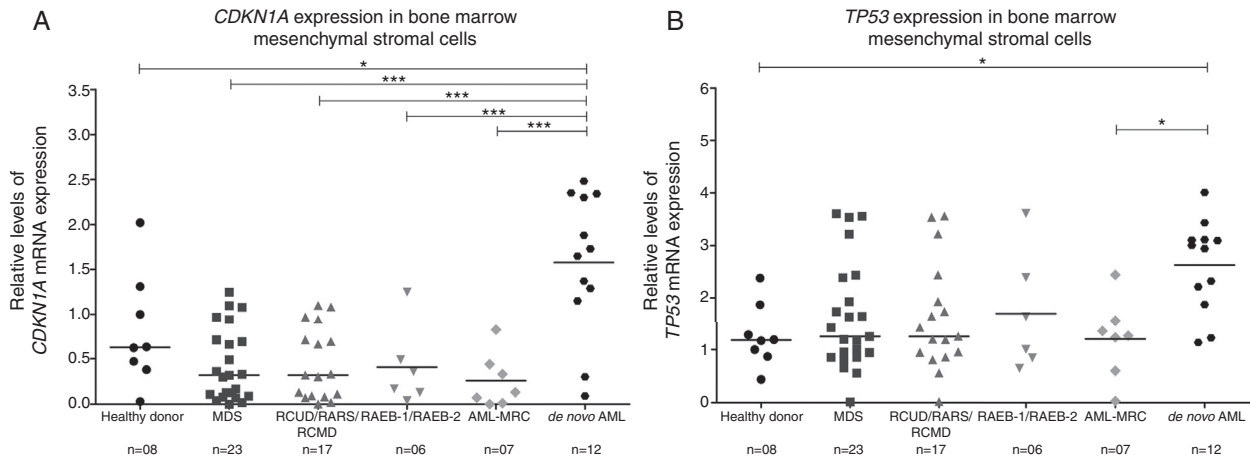


Figure 1 – *CDKN1A* and *TP53* expression in bone marrow mesenchymal stromal cells from myelodysplastic syndromes, acute myeloid leukemia with myelodysplasia-related changes, *de novo* acute myeloid leukemia and healthy donors. Quantitative polymerase chain reaction analysis of *CDKN1A* (A) and *TP53* (B) mRNA expression in bone marrow mesenchymal cells. The *HPRT1* gene was used as an endogenous control and a healthy donor was used as a calibrator sample. Horizontal lines indicate medians. **p*-value <0.05, *p*-value <0.01, ****p*-value <0.001; ANOVA test and Bonferroni post-test.**

specific markers in BMMSC studies. In the protocol used by Fei et al.,⁴ BMMSCs were cultured in a special human mesenchymal stem cell growth medium, while Pavlaki et al.⁵ cultured BMMSCs using DMEM.

With regard to the *CDKN1A* and *TP53* expression profile in *de novo* AML BMMSCs, our results corroborate the findings of Ruvolo et al.,¹² who observed an upregulation of *p21* and *p53* in BMMSCs from AML, suggesting increased cellular senescence. Importantly, our results highlight the biological and molecular differences between AML-MRC and *de novo* AML reported by other research groups.^{13–15}

Several lines of evidence indicate that alterations in the bone marrow niche contribute to the development and progression of MDS and AML and one of the most characterized elements of the bone marrow niche is the BMMSCs.^{9,16} This cell population represents a small fraction of bone marrow nucleated cells, and a standardized protocol for isolation and culture of BMMSCs may be necessary to minimize experimental variations and provide conclusive information about the biology of these cells in these hematological malignancies. Our results suggest that upregulation of *CDKN1A* and *TP53* may indicate senescence of *de novo* AML BMMSCs, which may contribute to the ineffective hematopoiesis found in this disease.

Conflicts of interest

The authors declare no conflicts of interest.

Acknowledgements

Funding for this work was provided by Conselho Nacional de Desenvolvimento Científico e Tecnológico (CNPq) and Fundação de Amparo à Pesquisa do Estado de São Paulo

(FAPESP). The authors would like to thank Dr. Nicola Conran for the English review.

REFERENCES

- Bulycheva E, Rauner M, Medyouf H, Theurl I, Bornhauser M, Hofbauer LC, et al. Myelodysplasia is in the niche: novel concepts and emerging therapies. *Leukemia*. 2015;29(2):259–68.
- Cogle CR, Saki N, Khodadi E, Li J, Shahjehani M, Azidoost S. Bone marrow niche in the myelodysplastic syndromes. *Leuk Res*. 2015;39(10):1020–7.
- Rashidi A, Uy GL. Targeting the microenvironment in acute myeloid leukemia. *Curr Hematol Malig Rep*. 2015;10(2):126–31.
- Fei C, Zhao Y, Guo J, Gu S, Li X, Chang C. Senescence of bone marrow mesenchymal stromal cells is accompanied by activation of *p53/p21* pathway in myelodysplastic syndromes. *Eur J Haematol*. 2014;93(6):476–86.
- Pavlaki K, Pontikoglou CG, Demetriadou A, Batsali AK, Damianaki A, Simantirakis E, et al. Impaired proliferative potential of bone marrow mesenchymal stromal cells in patients with myelodysplastic syndromes is associated with abnormal WNT signaling pathway. *Stem Cells Dev*. 2014;23(14):1568–81.
- Swerdlow SH, Campo E, Harris NL, Jaffe ES, Pileri SA, Stein H, et al. WHO classification of tumours of haematopoietic and lymphoid tissues. Lyon, France: IARC Press; 2008.
- Dominici M, Le Blanc K, Mueller I, Slaper-Cortenbach I, Marini F, Krause D, et al. Minimal criteria for defining multipotent mesenchymal stromal cells. The international society for cellular therapy position statement. *Cytotherapy*. 2006;8(4):315–7.
- Livak KJ, Schmittgen TD. Analysis of relative gene expression data using real-time quantitative PCR and the $2^{-\Delta\Delta C(T)}$ method. *Methods*. 2001;25(4):402–8.
- Kastrinaki MC, Pontikoglou C, Klaus M, Stavroulaki E, Pavlaki K, Papadaki HA. Biologic characteristics of bone marrow mesenchymal stem cells in myelodysplastic syndromes. *Curr Stem Cell Res Ther*. 2011;6(2):122–30.

10. Sotiropoulou PA, Perez SA, Salagianni M, Baxevanis CN, Papamichail M. Characterization of the optimal culture conditions for clinical scale production of human mesenchymal stem cells. *Stem Cells*. 2006;24(2):462-71.
11. Hagmann S, Moradi B, Frank S, Dreher T, Kammerer PW, Richter W, et al. Different culture media affect growth characteristics, surface marker distribution and chondrogenic differentiation of human bone marrow-derived mesenchymal stromal cells. *BMC Musculoskelet Disord*. 2013;14:223.
12. Ruvolo PP, Venkata LB, Qui Y, Ruvolo VR, Jacamo R, Zeng Z, et al. Reverse phase protein analysis of mesenchymal stem cells from AML patients and healthy donors reveals distinct patterns of protein expression reflecting differences in senescence, differentiation and survival signaling. *Blood (ASH Annual Meeting Abstracts)*. 2014:124. Abstract #4376.
13. Vardiman J, Reichard K. Acute myeloid leukemia with myelodysplasia-related changes. *Am J Clin Pathol*. 2015;144(1):29-43.
14. Weinberg OK, Arber DA. Acute myeloid leukemia with myelodysplasia-related changes: a new definition. *Surg Pathol Clin*. 2010;3(4):1153-64.
15. Devillier R, Gelsi-Boyer V, Brecqueville M, Carbuccia N, Murati A, Vey N, et al. Acute myeloid leukemia with myelodysplasia-related changes are characterized by a specific molecular pattern with high frequency of ASXL1 mutations. *Am J Hematol*. 2012;87(7):659-62.
16. Raaijmakers MH. Disease progression in myelodysplastic syndromes: do mesenchymal cells pave the way? *Cell Stem Cell*. 2014;14(6):695-7.

Matheus Rodrigues Lopes^{a,d,1},
João Agostinho Machado-Neto^{a,b,1}, Fabiola Traina^{a,b},
Paula de Melo Campos^a, Sara Teresinha Olalla Saad^a,
Patricia Favaro^{a,c,*}

^a Universidade Estadual de Campinas (Unicamp), Campinas, SP, Brazil

^b Universidade de São Paulo (USP), Ribeirão Preto, SP, Brazil

^c Universidade Federal de São Paulo (Unifesp), Diadema, SP, Brazil

^d Presently at Universidade do Vale do São Francisco (UNIVASF), Paulo Afonso, BA, Brazil

* Corresponding author at: Universidade Federal de São Paulo (Unifesp), Departamento de Ciências Biológicas, Rua São Nicolau, 210, 09913-030 Diadema, SP, Brazil.

E-mails: patricia.favaro@unifesp.br, favaropb@gmail.com (P. Favaro).

¹ These author contributed equally to this work.

Received 14 March 2016

Accepted 4 July 2016

1516-8484/© 2016 Associação Brasileira de Hematologia, Hemoterapia e Terapia Celular. Published by Elsevier Editora Ltda. This is an open access article under the CC BY-NC-ND license (<http://creativecommons.org/licenses/by-nc-nd/4.0/>). <http://dx.doi.org/10.1016/j.bjhh.2016.07.002>

Available online 6 August 2016