

Description of the hemipenial morphology of *Tupinambis quadrilineatus* Manzani and Abe, 1997 (Squamata, Teiidae) and new records from Piauí, Brazil

Marcélia Basto da Silva¹, Geraldo Rodrigues de Lima-Filho¹,
Áurea Aguiar Cronemberger¹, Leonardo Sousa Carvalho²,
Paulo Roberto Manzani³, Jânia Brito Vieira⁴

1 Museu Paraense Emílio Goeldi, Departamento de Zoologia, Av. Perimetral, 1901, Bairro Terra Firme, CEP 66077-530, Belém, PA, Brazil **2** Universidade Federal do Piauí, Campus Amílcar Ferreira Sobral, BR 343, KM 3.5, Bairro Meladão, s/nº, CEP 64800-000, Floriano, PI, Brazil **3** Universidade Estadual de Campinas, Instituto de Biologia, Departamento de Biologia Animal, Rua Monteiro Lobato, 255, Distrito de Barão Geraldo, CEP 13083-862, Campinas, SP, Brazil **4** Universidade Federal do Piauí, Campus Ministro Reis Veloso, Avenida São Sebastião 2819. CEP: 64202-220, Parnaíba, PI, Brazil

Corresponding author: *Marcélia Basto da Silva* (marceliastasto@gmail.com)

Academic editor: *J. Penner* | Received 3 June 2013 | Accepted 27 September 2013 | Published 12 December 2013

Citation: da Silva MB, de Lima-Filho GR, Cronemberger ÁA, Carvalho LS, Manzani PR, Vieira JB (2013) Description of the hemipenial morphology of *Tupinambis quadrilineatus* Manzani and Abe, 1997 (Squamata, Teiidae) and new records from Piauí, Brazil. ZooKeys 361: 61–72. doi: 10.3897/zookeys.361.5738

Abstract

Few data are available on the morphology of the hemipenis of teiid lizards, especially those of the recently-defined genus *Tupinambis*, a widely-distributed group of large-bodied lizards. This study provides an illustrated description of the hemipenis of *Tupinambis quadrilineatus*, which is similar to that of other representatives of the Tupinambinae subfamily. New records of the species from the state of Piauí, in northeastern Brazil, are also presented.

Keywords

Hemipenis, systematics, Tupinambinae, *Tupinambis*, new records

Introduction

The genus *Tupinambis* Daudin (Teiidae) comprises a group of large (maximum SVL of 400 mm) Neotropical lizards, which are distinguished from all other teiids by the combination of smooth dorsal scales, a single loreal, a gap in the granular scales separating the femoral from the abdominal pores, and a cylindrical tail with complete annuli alternating with annuli divided on the dorsal and lateral sides (Harvey et al. 2012). In a recent review of the Teiidae, Harvey et al. (2012) resurrected the genus *Salvator* Duméril and Bibron to refer to the species of the “southern clade” (*sensu* Fitzgerald et al. 1999) previously included in *Tupinambis*. These species are now known as *Salvator merianae* (Duméril & Bibron, 1839), *S. rufescens* (Günther, 1871) and *S. duseni* (Lönnerberg, 1896). According to this scheme, the genus *Tupinambis* currently includes only the four species of the northern or “Amazonian” clade (*sensu* Fitzgerald et al. 1999) – *Tupinambis longilineus* Avila-Pires, 1995, *Tupinambis palustris* Manzani & Abe, 2002, *Tupinambis quadrilineatus* Manzani & Abe, 1997, and *Tupinambis teguixin* (Linnaeus, 1758). The genus *Tupinambis* is found in Colombia, Venezuela, Trinidad and Tobago, the Guyanas, the Amazon basin, and the savannas of Bolivia and Brazil (Harvey et al. 2012). Despite the conspicuous size of these lizards, zoogeographic data are sketchy, and new localities have been recorded recently for some species, such as *T. longilineus* (Lima and Pimenta 2008, Costa et al. 2008) and *T. quadrilineatus* (Ferreira et al. 2009, Silveira 2009).

Tupinambis quadrilineatus is endemic to the Cerrado savannas of central Brazil. The species was described in 1997, based on four specimens from Goiás, Mato Grosso, and Tocantins (Manzani and Abe 1997, Silveira 2009). Almost simultaneously, Colli et al. (1998) described the same form under the junior-synonym *Tupinambis cerradensis*. A number of other specimens were collected subsequently in the Brazilian states of Goiás, Minas Gerais, Mato Grosso, Maranhão, Tocantins, Piauí, Pará and the Distrito Federal (Barreto et al. 2007, Ferreira et al. 2009, Silveira 2009, Dal Vechio et al. 2013). The geographic range of the species is extended further in the present study.

The hemipenis of *T. quadrilineatus* is also described here for the first time. The hemipenial morphology of teiid lizards is poorly known (Harvey et al. 2012). Cope (1896) analyzed the hemipenis of the genera *Dracaena*, *Tupinambis*, *Ameiva*, and *Cnemidophorus* and concluded that the morphology of these typical teiid species consist of numerous delicate, imbricate, transverse laminae, which are closely attached to one another. Dowling and Duellman (1978, figure 83.2) published an illustration of the sulcate surface of the hemipenis of a species referred to as *Tupinambis nigropunctatus* Spix, 1825, however they did not provide a museum number, nor did they describe the organ. Presently, *T. nigropunctatus* is considered as a synonym of *Tupinambis teguixin* (Linnaeus, 1758), and its drawing exhibited a slightly bilobed and relatively long hemipenis, with distal laminae. In addition, the hemipenial morphology of 13 teiid species was described by Böhme (1988), but the author did not examine nor describe the hemipenis of *Tupinambis*.

Besides, Harvey et al. (2012) reviewed the taxonomy and phylogeny of the teiids and included descriptions of the hemipenes of a number of species of the subfamily Tupinambinae, including *Crocodylurus amazonicus* Spix, 1825 and *Salvator merianae*. This study shows that the hemipenis in the Tupinambinae can be characterized as an organ with transverse laminae, a pair of apical awns, and catchment folds. Awns are usually prominent subcylindrical structures, rounded at their distal ends, located at the apex of the lobes. The most elaborate sulcate catchment fold can be observed in *Crocodylurus* and *Salvator*, in which the portion of the fold closest to the sulcus projects outward as a prominent triangular flap. A summary of the hemipenial characters for the Teiidae subfamilies presented by Harvey et al. (2012) is shown in Table 1. The hemipenial morphology of *Tupinambis* nevertheless remains unknown, and the present paper provides a first detailed description of the organ in this genus.

Methods

Specimens were collected from a locality in the Cerrado savanna of the state of Maranhão and different phytophysognomies in Piauí. The material examined is deposited in the herpetological collections of the Coleção de História Natural of the Universidade Federal do Piauí, Floriano, Piauí (CHNUFPI, curator: L. S. Carvalho) and the Museu Paraense Emílio Goeldi, Belém, Pará (MPEG, curator: A. L. C. Prudente). Museum abbreviations follow Levington et al. (1980). Scale counts, body measurements, and color pattern are based on the schemes of Manzani and Abe (1997) and Colli et al. (1998). The sex of the specimens was determined by the presence or absence of a hemipenis verified through an incision at the base of the tail. Hemipenis terminology follows Savage (1997), Myers et al. (1993) and Harvey et al. (2012), and the specimens were prepared as in Pesantes (1994), Manzani and Abe (1988) and Zaher and Prudente (2003).

Table 1. Hemipenial characters of teiid lizards of three subfamilies of Teiidae (Harvey et al. 2012).

| Subfamilies | Proximal laminae | Distal laminae | Discontinuous laminae | Awns | Apical sulcate Structures | Apical asulcate structures |
|----------------|------------------|----------------|--------------------------|-----------------|---|---|
| Callopiistinae | 6 | 19 | Present | Absent | Large Flat Expansions | Absent |
| Teiinae | 0–50 | 5–24 | Absent (in most species) | Present | Catchment Fold/ Papillate/ Subtriangular or Rounded Lobes | Rounded Lobes/ High semicircular or Straight Ridges (Flap)/ Subtriangular Flaps/ Papillate/ Rounded Lobes |
| Tupinambinae | 27–40 | 44–71 | Absent | Absent/ Styloid | Catchment Folds with Triangular Flaps | Rounded Lobes |

Taxonomy

Tupinambis quadrilineatus Manzani & Abe, 1997

http://species-id.net/wiki/Tupinambis_quadrilineatus

Tupinambis quadrilineatus Manzani & Abe, 1997: 2 (adult male holotype deposited in the Museu de Zoologia of the Universidade Estadual de Campinas, ZUEC 1963, type-locality: Fazenda Bandeirantes, Municipality of Baliza, Goiás, Brazil (16°13'S, 51°25'W, SAD69), not examined).

Tupinambis cerradensis Colli, Péres & Cunha, 1998: 479 (adult male holotype deposited in the Coleção de Herpetologia of the Universidade de Brasília, CHUNB 00468, type-locality: Rosário Oeste, Mato Grosso, Brazil (14°50'S, 56°25'W, SAD69), not examined).

Tupinambis quadrilineatus; Taylor 2003: 44, Langstroth 2005: 106, Silva Jr. et al. 2005: 81, Vitt et al. 2005: 8, Werneck and Colli 2006: 1987, Guimarães et al. 2007: 353, Recoder and Nogueira 2007: 270, Silveira 2009: 442, Ferreira et al. 2009: 355, Moreira et al. 2009: 187, Recoder et al. 2011: 275.

Diagnosis. *Tupinambis quadrilineatus* differs (see Table 2 for scale counts and measurements) from the other species of the genus in the presence of 11–18 femoral pores (15–18 in *T. teguixin*, 20–22 in *T. longilineus*, 18–26 in *T. palustris*), 94–118 scales around the mid-body (94–124 in *T. teguixin*, 90–98 in *T. longilineus*, 112–119 in *T. palustris*), 113–138 dorsal scales (102–126 in *T. teguixin*, 110–121 in *T. longilineus*, 111–122 in *T. palustris*) and the coloration. In *T. quadrilineatus*, the upper lateral stripe is well-defined along the flanks, whereas in other species, it is indistinct or absent (Avila-Pires 1995, Colli et al. 1998, Manzani and Abe 2002, Harvey et al. 2012).

Hemipenial morphology. The hemipenis of three specimens of *T. quadrilineatus* (CHNUFPI 0036, CHNUFPI 0038 and MPEG 30139) were prepared for analysis. The organ is relatively long, robust and slightly bilobed, with a total length of 5.0 cm and a width of 2.0 cm in the distal portion of the body (Figure 1). When inverted, the organ extends as far as the fifteenth subcaudal scale. Sulcus spermaticus bifurcated, deep and centripetal. Edge of the sulcus spermaticus pronounced along its entire length. The point of bifurcation of the lobes extends inwardly towards the central region of the styloid process. A pair of short and prominent lobes (about 16% of the total size of the organ) in the form of styloid process are present on either side of the sulcate and asulcate surface, with a pair of catchment folds (extensions of the lips of the sulcus, in the form of prominent sulcal flaps, with rounded edges) coating the styloid process. The region between the lobes is smooth on both the sulcate and asulcate surfaces. Naked sulcate and asulcate expansion pleat. Between 35 and 38 distal laminae (mean = 36 ± 1 , $n = 3$), arranged in a transverse row on each side, extending from just below the apical folds to the base of the lobes. A lateral sulcus separates the distal laminae from the sulcate and asulcate surfaces. Fifteen to 17 proximal laminae (mean = 16 ± 1 , $n = 3$). Basal region smooth on the sulcate surface, and wrinkled on the asulcate surface. Discontinuous laminae and basal papillae absent.

Table 2. Scale counts of the specimens of *Tupinambis quadrilineatus* analyzed in the present study and the known range of values for the species, according to Manzani and Abe (1997) and Colli et al. (1998).

| Character | CHNUFPI 0036 | CHNUFPI 0037 | CHNUFPI 0038 | MPEG 16817 | MPEG 16845 | MPEG 30139 | MPEG 30140*** | MPEG 30141 | Known range of values |
|------------------------------------|-----------------|-----------------|-----------------|---------------|---------------|---------------|------------------|---------------|-----------------------------|
| Sex | Male | Male | Male | Female | Female | Male | Immature male | Male | |
| Femoral pores* | 11 | 10 | 12 | 10 | 10 | 11 | 11 | 11 | 11–18 |
| Pre-cloacal pores* | 10 | 8 | 10 | 8 | 9 | 8 | 8 | 8 | 5–11 |
| Dorsal scales | 127 | 118 | 119 | 115 | 116 | 109 | 111** | 117 | 113–138 |
| Scales around midbody | 116 | 105 | 120** | 112 | 116 | 90** | 103 | 98 | 94–118 |
| Ventral scales in a transverse row | 24 | 24 | 25 | 25 | 26 | 23 | 24 | 25 | 20–28 |
| Lamellae under fourth finger | 15 | 13 | 15 | 14 | 15 | 14 | 15 | 14 | 12–17 |
| Lamellae under fourth toe | 29 | 30 | 30 | 33 | 34** | 27 | 32 | 27 | 26–33 |
| Loreal scale | 1 | 1 | 1 | 1 | 1 | 1 | 1 | 1 | 1 |
| Supralabial scales* | 17** | 15 | 17** | 16 | 16 | - | - | - | 13–16 |
| Infralabial scales* | 14 | 14 | 16 | 14 | 14 | - | - | 14 | 13–17 |
| Snout-vent length (mm) | 260 | 260 | 227 | 245 | 235 | 260 | 135 | 255 | 88–270 |
| Body width (mm) | 49.56 | 54.48 | 48.36 | 59.98 | 51.27 | 58.66 | - | 55.98 | 17.92–61.86 |
| Body height (mm) | 36.58 | 37.20 | 30.46 | 42.09 | 36.03 | 44.59 | - | 40.66 | 13.95–51.98 |
| Head length (mm) | 55.66 | 55.92 | 51.29 | 52.05 | 52.80 | 54.32 | - | 52.39 | 24.10–62.04 |
| Head width (mm) | 42.73 | 44.98 | 34.98 | 41.61 | 33.91 | 39.44 | - | 40.22 | 15.16–44.28 |
| Head height (mm) | 30.20 | 28.37 | 28.26 | 35.47 | 30.35 | 36.23 | - | 29.69 | 11.60–38.40 |

* Total number on both sides.

** Exceeds maximum value recorded in previous studies.

***This specimen has a damaged head and part of the body, which prevented the withdraw of the remaining measures.

The hemipenial morphology of *T. quadrilineatus* is similar to that of other *Tupinambinae* in the ornamentation of the body, which are bilobed and have lamellae (Cope 1896, Dowling and Duellman 1978, Harvey et al. 2012). As in *Salvator merianae*, *Tupinambis teguixin* and *Crocodylurus amazonicus* (Dowling and Duellman 1978, Harvey et al. 2012), the hemipenis of *T. quadrilineatus* lacks the discontinuous distal laminae seen in *Ameiva ameiva* and *Ameivula ocellifera*. However, *S. merianae*, formerly considered to be a member of the genus *Tupinambis*, has a relatively long



Figure 1. Right hemipenis of *Tupinambis quadrilineatus* (CHNUFPI 0036). **A** sulcate surface **B** asulcate surface **C** lateral region. Scale bar = 1 cm.

hemipenis, which lacks the lateral and medial expansion pleats and has more laminae (distal laminae: 56–71 and proximal laminae: 33–40) than other teiids (Harvey et al. 2012). See Table 1 for the differences in the hemipenial morphology of three subfamilies of Teiidae (Harvey et al. 2012). The morphology and ornamentation of the hemipenis play an important role in the diagnosis of species, and have proven to be an excellent indicator of the phylogenetic relationships among taxa (Cope 1896, Böhme 1988, Harvey et al. 2012). Harvey et al. (2012) concluded that the relationships among the genera of Tupinambinae, especially *Tupinambis* and *Salvator*, require further study, and that a more detailed analysis of hemipenial morphology, as well as muscles and osteology, may contribute to a more definitive understanding of the systematics of the group.

Measurements. Based on eight specimens. Snout-vent length 135–260 mm (mean = 234.9 mm); body width 48.4–60.0 mm (mean = 54.0 mm), body height 30.5–44.6 mm (mean = 38.5 mm), head length 51.3–55.9 mm (mean = 53.6 mm), head width 33.9–45.0 mm (mean = 39.7 mm), head height 28.3–36.2 mm (mean = 31.2 mm). See Table 1 for a complete list of the measurements and scale counts recorded in the present study and those available in the literature (Manzani and Abe 1997, Colli et al. 1998, Silveira 2009).

Geographic distribution. The *Tupinambis* specimens available in Brazilian collections were examined together with the eight *T. quadrilineatus* specimens collected

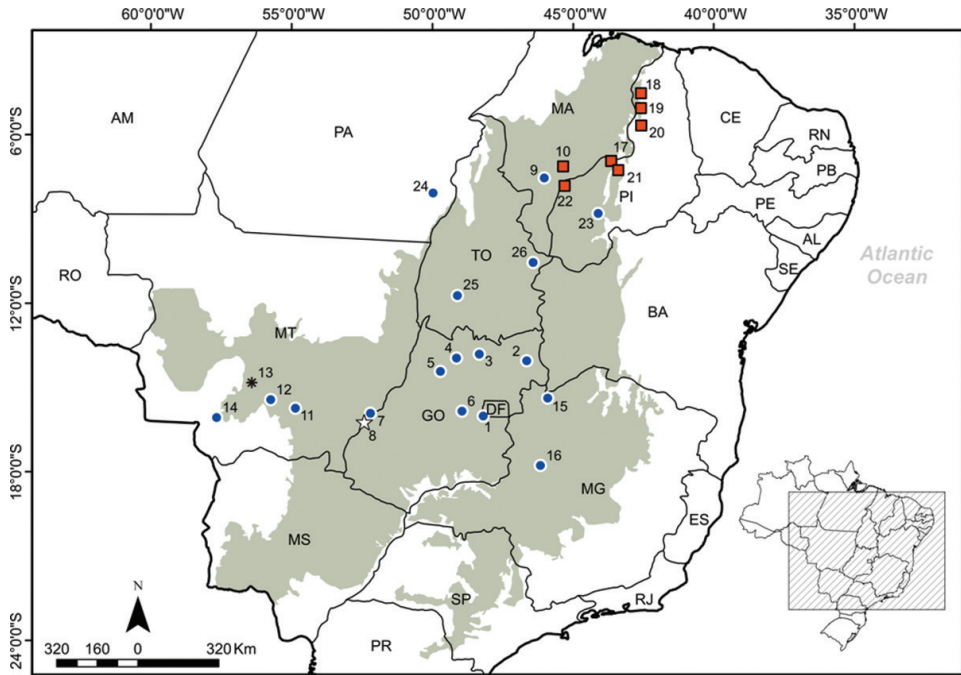


Figure 2. Known localities for *Tupinambis quadrilineatus* in Brazil. Distrito Federal (DF): Brasília, Gama (1). Goiás (GO): Iaciara (2) Minaçu (3) Mara Rosa (4) Santa Terezinha de Goiás (5) Pirenópolis (6) Aragarças (7) Baliza (8). Maranhão (MA): Balsas (9) São Raimundo das Mangabeiras (10). Mato Grosso (MT): Primavera do Leste (11) Chapada dos Guimarães (12) Rosário Oeste (13) Cáceres (14). Minas Gerais (MG): Chapada Gaúcha (15) João Pinheiro (16). Piauí (PI): Guadalupe (17) Lagoa Alegre (18) Altos (19) Monsenhor Gil (20) Amarante (21), Ribeiro Gonçalves (22) Uruçuí (23). Pará (PA): Santa Maria das Barreiras and Redenção (24). Tocantins (TO): Gurupi (25) Mateiros (26). The localities recorded in the present study are represented by red squares. The type-locality of *T. quadrilineatus* is shown as an asterisk, the type-locality of its junior-synonym (*Tupinambis cerradensis*) is shown as a star and remaining records from the literature are shown as blue circles (Manzani and Abe 1997; Colli et al. 1998; Guimarães et al. 2007; Silva Jr. et al. 2005; Vitt et al. 2005; Mesquita et al. 2006; Recoder and Nogueira 2007; Ferreira et al. 2009; Silveira 2009; Recoder et al. 2011; Dal Vechio et al. 2013). The Cerrado savanna biome is highlighted in gray.

during the present study, in Maranhão and Piauí (Figure 2). The localities reported here represent the northernmost known records of *T. quadrilineatus*, and extend the known distribution of the species at least 500 km from the nearest locality, in Balsas, Maranhão (Barreto et al. 2007). This is the northernmost record of the occurrence of the species.

Five *T. quadrilineatus* specimens were examined in the collection of the Goeldi Museum. In 1993, specimen MPEG 16817 was collected in Balsas, Maranhão (reported by Barreto et al. 2007), and specimen MPEG 16845 was captured in the municipality of Lagoa Alegre, Piauí. In 2009, three specimens were collected during the Parnaíba Project in Ribeiro Gonçalves (MPEG 30139), and Uruçuí (MPEG 30141), in the state of Piauí, and São Raimundo das Mangabeiras (MPEG 30140), in Maranhão.

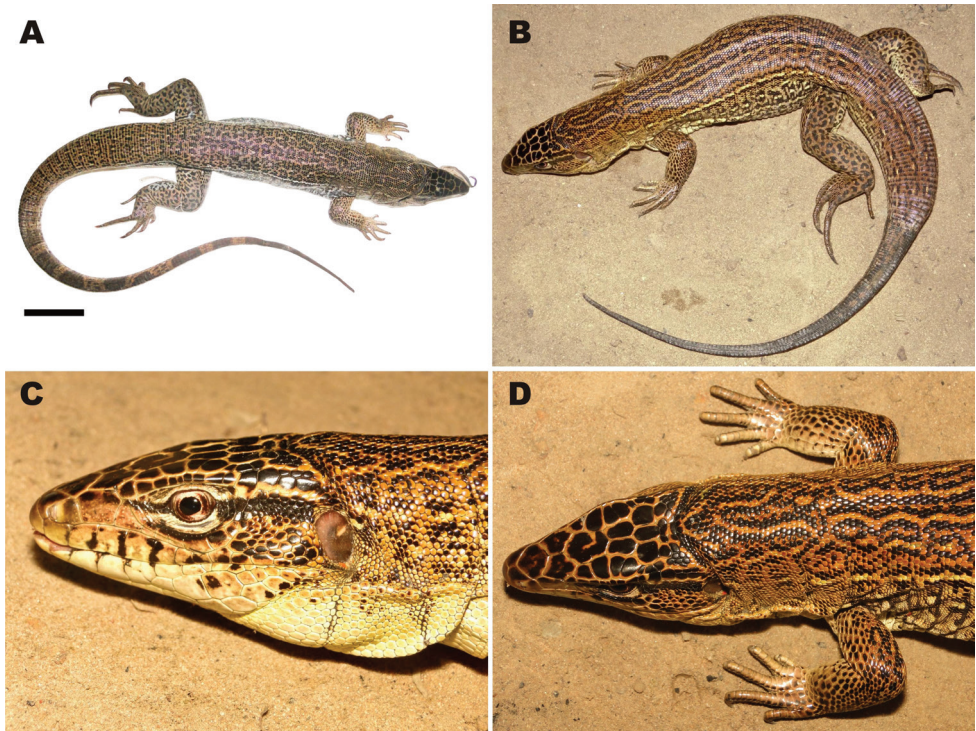


Figure 3. Adult male *Tupinambis quadrilineatus*. **A** specimen collected in the Palmares National Forest, Altos, Piauí (CHNUFPI 0036; Scale 5cm) **B** specimen collected with pit-fall traps at Guadalupe, Piauí (CHNUFPI 0038) **C** lateral view of the head and **D** dorsal view of the anterior region of the body (CHNUFPI 0036).

The herpetological collection of the Universidade Federal do Piauí provided specimens or records of *T. quadrilineatus* from a number of sites in Piauí. Specimen CHNUFPI 0036 (Figure 3A) was collected in 2010 in the Palmares National Forest (05°02'55"S, 42°35'59"W, SAD69), in the municipality of Altos. The vegetation of this area is semi-deciduous tropical forest typical of the Cerrado, an ecotonal region between Cerrado and Amazonia biomes, similar to that found in Lagoa Alegre. *Tupinambis quadrilineatus* occurs in syntopy with *S. merianae* in this area, as recorded at a number of other sites (Colli et al. 1998, Silveira 2009). Also in 2010, a roadkilled specimen of *T. quadrilineatus* (CHNUFPI 0037) was collected in the municipality of Monsenhor Gil (05°39'56"S, 42°35'28"W, SAD69). In May 2011, the third and final *T. quadrilineatus* specimen held in the collection (CHNUFPI 0038; Figure 3B–D) was collected in a pitfall trap installed in the vicinity of a small stream within an area dominated by Cerrado savanna (*sensu strictu*) in the municipality of Guadalupe (05°2'55"S, 42°35'59"W, SAD69). Two other specimens were observed in the municipality of Amarante (06°14'43"S, 42°46'46"W and 06°2'1"S, 43°3'40"W, SAD69) in 2009 and 2011, but specimens were not collected. In this area, the vegetation was dominated by secondary semi-deciduous tropical forest, mixed with patches of Cerrado *sensu strictu*.

These findings expand the geographic distribution of *T. quadrilineatus* is northwards, and encompass the the region between the states of Piauí and Maranhão, which is dominated by Cerrado *sensu strictu* and/or forested patches of the Cerrado–Amazon ecotone. In this region, *T. quadrilineatus* also occurs in syntopy with *Salvator merrianae*, which was previously classified as a member of the genus *Tupinambis*.

Acknowledgements

We are grateful to the Chico Mendes Institute for the Conservation of Biodiversity (ICMBio) for specimen collection permit #23561-1/SISBIO. We are especially indebted to A. L. C. Prudente (Museu Paraense Emílio Goeldi) for the loan of MPEG specimens and making working space available, A. O. Maciel for providing locality data for the specimens collecting during the Parnaíba Project and to S. Ferrari for the English revision of this paper.

References

- Avila-Pires TCS (1995) Lizards of Brazilian Amazonia (Reptilia: Squamata). Zoologische Verhandelingen, 706 pp.
- Barreto L, Arzabe C, Lima YCC (2007) Herpetofauna da região de Balsas. In: Barreto L (Ed) Cerrado Norte do Brasil. USEB, Pelotas, 221–229.
- Böhme W (1988) Zur Genitalmorphologie der Sauria: funktionelle und stammesgeschichtliche Aspekte. Bonner Zoologische Monographien 27: 1–176.
- Colli GR, Péres Jr. AK, Cunha HJ (1998) A new species of *Tupinambis* (Squamata: Teiidae) from Central Brazil, with an analysis of morphological and genetic variation in the genus. Herpetologica 54(4): 477–492.
- Cope ED (1896) On the hemipenes of the Sauria. Proceedings of the Academy of Natural Sciences of Philadelphia 48: 461–467.
- Costa HC, São Pedro VA, Péres AK, Feio NR (2008) Reptilia, Squamata, Teiidae, *Tupinambis longilineus*: Distribution extension. Check List 4: 267–268.
- Dal Vechio F, Recoder R, Rodrigues MT, Zaher H (2013) The herpetofauna of the Estação Ecológica de Uruçuí-Una, state of Piauí, Brazil. Papéis Avulsos de Zoologia 53(16): 225–243. doi: 10.1590/S0031-10492013001600001
- Dowling HG, Duellman WE (1978) Systematic Herpetology: A Synopsis of Families and Higher Categories. HISS Publications, New York, 118 pp.
- Ferreira LV, Pereira JLG, Avila-Pires TCS, Chaves PP, Cunha DA, Furtado CS (2009) Primeira ocorrência de *Tupinambis quadrilineatus* Manzani, Abe, 1997 (Squamata: Teiidae) no bioma Amazônia. Boletim do Museu Paraense Emílio Goeldi Ciências Naturais 4(3): 355–361.
- Fitzgerald LA, Cook JA, Aquino AJ (1999) Molecular phylogenetics and conservation of *Tupinambis* (Sauria: Teiidae). Copeia 1999: 894–905. doi: 10.2307/1447965

- Guimarães TCS, Figueiredo GB, Salmito WE (2007) Geographic distribution: *Tupinambis quadrilineatus*. Herpetological Review 38(3): 353–354.
- Harvey MB, Ugueto GN, Gutberlet RL (2012) Review of Teiid Morphology with a Revised Taxonomy and Phylogeny of the Teiidae (Lepidosauria: Squamata). Zootaxa 3459: 1–156. <http://zoobank.org/References/457C2AD0-E5CF-4A41-B6CB-11722700BC5F>
- Langstroth RP (2005) Adiciones probables y confirmadas para la saurofauna boliviana. Kempfiana 1(1): 101–128.
- Levington AE, McDiarmid R, Moody S, Nickerson M, Rosado J, Sokol O, Voris H (1980) Museum acronyms. Second edition, Herpetological Review 11: 93–102.
- Lima AC, Pimenta FE (2008) Reptilia, Squamata, Teiidae, *Tupinambis longilineus*: Distribution extension. Check List 4: 240–243.
- Manzani PR, Abe A (1997) A new species of *Tupinambis* Daudin, 1802 (Squamata: Teiidae) from Brazil. Boletim do Museu Nacional, Nova Série, Zoologia 382: 1–10.
- Manzani PR, Abe A (1988) Sobre dois novos métodos de preparação de hemipênis de serpentes. Memórias do Instituto Butantan 50(1): 15–20.
- Manzani PR, Abe AS (2002) A new species of *Tupinambis* Daudin, 1803 from southeastern Brazil (Squamata, Teiidae). Arquivos do Museu Nacional, Rio de Janeiro 60: 295–302.
- Mesquita DO, Colli GR, França FGR, Vitt LJ (2006) Ecology of a Cerrado lizard assemblage in the Jalapão region of Brazil. Copeia 2006(3): 460–471. doi: 10.1643/0045-8511(2006)2006[460:EOACLA]2.0.CO;2
- Moreira LA, Fenolio DB, Silva HLR, Silva Jr. NJ (2009) A preliminary list of the Herpetofauna from termite mounds of the cerrado in the Upper Tocantins river valley. Papéis Avulsos de Zoologia 49(15): 183–189. http://www.scielo.br/scielo.php?pid=S0031-10492009001500001&script=sci_arttext
- Myers CH, Williams EE, McDiarmid RW (1993) A new anoline lizard (*Phenacosaurus*) from the highland of Cerro de la Neblina, Southern Venezuela. American Museum Novitates 3070: 1–15.
- Pesantes OS (1994) A method for preparing the hemipenis of preserved snakes. Journal of Herpetology 28: 93–95. doi: 10.2307/1564686
- Recoder R, Nogueira C (2007) Composição e diversidade de répteis na região sul do Parque Nacional Grande Sertão Veredas, Brasil Central. Biota Neotropica 7(3): 267–278. doi: 10.1590/S1676-06032007000300029
- Recoder RS, Junior MT, Camacho A, Nunes PMS, Mott T, Valdujo PH, Ghellere JM, Nogueira C, Rodrigues MT (2011) Répteis da Estação Ecológica Serra Geral do Tocantins, Brasil Central. Biota Neotropica 11(1): 263–282. doi: 10.1590/S1676-06032011000100026
- Savage JM (1997) On terminology for the description of the hemipenis of squamate reptiles. Herpetological Journal 7: 23–25. doi: 10.1590/S1984-46702011000400005
- Silva Jr. NJ, Silva HLR, Rodrigues MT, Valle NCU, Costa MC, Castro SP, Linder ET, Johanson C, Sites Jr. JW (2005) A fauna de vertebrados do vale do alto rio Tocantins em áreas de usinas hidrelétricas. Estudos 32: 57–101.
- Silveira AL (2009) Reptilia, Squamata, Teiidae, *Tupinambis quadrilineatus*: Distribution extension and geographic distribution map. Check List 5(3): 442–445.
- Taylor JF (2003) Genus *Tupinambis*, Tegu. Reptilia 27: 43–49.

- Vitt LJ, Cadwell JP, Colli GR, Garda AA, Mesquita DO, França FGR, Shepard DB, Costa GC, Vasconcellos MM, Silva VN (2005) Uma atualização do guia fotográfico dos répteis e anfíbios da região do Jalapão no Cerrado brasileiro. Special Publications in Herpetology, San Noble Oklahoma Museum of Nature History 2: 1–24.
- Werneck FP, Colli GR (2006) The lizard assemblage from seasonally dry tropical forest enclaves in the Cerrado biome, Brazil, and its association with the pleistocenic arc. *Journal of Biogeography* 33: 1983–1992. doi: 10.1111/j.1365-2699.2006.01553.x
- Zaher H, Prudente ALC (2003) Hemipenis of *Siphlophis* (Serpentes, Xenodontinae) and Techniques of Hemipenial Preparation in Snakes: A Response to Dowling. *Herpetological Review* 34: 302–307.

Appendix

Material analyzed

Table of localities. *Tupinambis quadrilineatus*: Maranhão: MPEG 16817 (Rio Matões, right bank tributary of the Rio Balsas, Balsas), MPEG 30140 (São Raimundo das Mangabeiras), Piauí: CHNUFPI 0036 (Palmares National Forest, Altos), CHNUFPI 0037 (Monsenhor Gil), CHNUFPI 0038 (Fazenda São Pedro, Guadalupe), MPEG 16845 (Lagoa Alegre), MPEG 30139 (Ribeiro Gonçalves), MPEG 30141 (Estação Ecológica de Uruçuí-Una, Uruçuí).

| Collection | Collection number | Family | Genus | Species | Locality | Municipality | State | Latitude | Longitude | Coordinate origin |
|---------------|-------------------|---------|-------------------|-----------------------|---|------------------------------|----------|--------------|---------------|-------------------|
| MPEG | MPEG 16817 | Teiidae | <i>Tupinambis</i> | <i>quadrilineatus</i> | Near Matões River, tributary of the Balsas Rive | Balsas | Maranhão | 7°31'S | 46°2'W | Google Earth |
| MPEG | MPEG 30140 | Teiidae | <i>Tupinambis</i> | <i>quadrilineatus</i> | | São Raimundo das Mangabeiras | Maranhão | 7°1'S | 45°28'W | A. O. Maciel |
| CHNUFPI | CHNUFPI 0036 | Teiidae | <i>Tupinambis</i> | <i>quadrilineatus</i> | Palmares National Forest | Altos | Piauí | 05°02'55"S | 42°35'59"W | GPS |
| CHNUFPI | CHNUFPI 0037 | Teiidae | <i>Tupinambis</i> | <i>quadrilineatus</i> | BR 343 | Monsenhor Gil | Piauí | 05°39'56"S | 42°35'28"W | GPS |
| CHNUFPI | CHNUFPI 0038 | Teiidae | <i>Tupinambis</i> | <i>quadrilineatus</i> | São Pedro Farm | Guadalupe | Piauí | 5°2'55"S | 42°35'59"W | GPS |
| MPEG | MPEG 16845 | Teiidae | <i>Tupinambis</i> | <i>quadrilineatus</i> | | Lagoa Alegre | Piauí | 4°26'S | 42°35'W | Google Earth |
| MPEG | MPEG 30139 | Teiidae | <i>Tupinambis</i> | <i>quadrilineatus</i> | | Ribeiro Gonçalves | Piauí | 7°33'S | 45°14'W | A. O. Maciel |
| MPEG | MPEG 30141 | Teiidae | <i>Tupinambis</i> | <i>quadrilineatus</i> | Uruçuí-Una Ecological Station | Uruçuí | Piauí | 7°14'S | 44°33'W | Google Earth |
| Not collected | Not collected | Teiidae | <i>Tupinambis</i> | <i>quadrilineatus</i> | BR 343 | Amarante | Piauí | 6°14'43.49"S | 42°46'46.02"W | GPS |