

## RESEARCH ARTICLE

## Open Access

# The cancer gene WWOX behaves as an inhibitor of SMAD3 transcriptional activity via direct binding

Brent W Ferguson<sup>1</sup>, Xinsheng Gao<sup>1</sup>, Maciej J Zelazowski<sup>1</sup>, Jaeho Lee<sup>1</sup>, Collene R Jeter<sup>1</sup>, Martin C Abba<sup>2</sup> and C Marcelo Aldaz<sup>1\*</sup>

## Abstract

**Background:** The WW domain containing protein WWOX has been postulated to behave as a tumor suppressor in breast and other cancers. Expression of this protein is lost in over 70% of ER negative tumors. This prompted us to investigate the phenotypic and gene expression effects of loss of WWOX expression in breast cells.

**Methods:** Gene expression microarrays and standard in vitro assays were performed on stably silenced WWOX (shRNA) normal breast cells. Bioinformatic analyses were used to identify gene networks and transcriptional regulators affected by WWOX silencing. Co-immunoprecipitations and GST-pulldowns were used to demonstrate a direct interaction between WWOX and SMAD3. Reporter assays, ChIP, confocal microscopy and *in silico* analyses were employed to determine the effect of WWOX silencing on TGF $\beta$ -signaling.

**Results:** WWOX silencing affected cell proliferation, motility, attachment and deregulated expression of genes involved in cell cycle, motility and DNA damage. Interestingly, we detected an enrichment of targets activated by the SMAD3 transcription factor, including significant upregulation of *ANGPTL4*, *FST*, *PTHLH* and *SERPINE1* transcripts. Importantly, we demonstrate that the WWOX protein physically interacts with SMAD3 *via* WW domain 1. Furthermore, WWOX expression dramatically decreases SMAD3 occupancy at the *ANGPTL4* and *SERPINE1* promoters and significantly quenches activation of a TGF $\beta$  responsive reporter. Additionally, WWOX expression leads to redistribution of SMAD3 from the nuclear to the cytoplasmic compartment. Since the TGF $\beta$  target *ANGPTL4* plays a key role in lung metastasis development, we performed a meta-analysis of *ANGPTL4* expression relative to *WWOX* in microarray datasets from breast carcinomas. We observed a significant inverse correlation between *WWOX* and *ANGPTL4*. Furthermore, the *WWOX*<sup>lo</sup>/*ANGPTL4*<sup>hi</sup> cluster of breast tumors is enriched in triple-negative and basal-like sub-types. Tumors with this gene expression signature could represent candidates for anti-TGF $\beta$  targeted therapies.

**Conclusions:** We show for the first time that WWOX modulates SMAD3 signaling in breast cells *via* direct WW-domain mediated binding and potential cytoplasmic sequestration of SMAD3 protein. Since loss of WWOX expression increases with breast cancer progression and it behaves as an inhibitor of SMAD3 transcriptional activity these observations may help explain, at least in part, the paradoxical pro-tumorigenic effects of TGF $\beta$  signaling in advanced breast cancer.

**Keywords:** WWOX, SMAD3, Breast Cancer, TGF $\beta$ , ANGPTL4

\* Correspondence: [maaldaz@mdanderson.org](mailto:maaldaz@mdanderson.org)

<sup>1</sup>Department of Molecular Carcinogenesis, Science Park, The University of Texas M.D. Anderson Cancer Center, Smithville, TX 78957, USA  
Full list of author information is available at the end of the article

## Background

*WWOX* (WW domain-containing oxidoreductase) was originally cloned by our laboratory because it was observed to reside in a chromosomal region (ch16q23) commonly affected by deletions in breast cancer [1]. Subsequently, it was concluded that the second most common chromosomal fragile site, FRA16D, spans the same locus as *WWOX* [1,2]. It was determined that FRA3B (*FHIT*) and FRA16D (*WWOX*) loci rank second and third respectively, only after the *CDKN2A* (*p16*) locus, as the chromosomal sites most commonly affected by hemi- and homozygous deletions in a genome wide study of over 740 cancer lines [3]. The high frequency of deletions affecting *WWOX* in multiple solid tumors is well documented [4-6]; additionally, translocations affecting *WWOX* are common in multiple myeloma [7]. Loss of *WWOX* expression is frequent in multiple tumor types including breast cancer. Importantly, it has been determined that over 70% of estrogen receptor alpha (ER) negative breast cancers express little or no *WWOX* protein, suggesting an inverse association between *WWOX* expression and increasing breast cancer aggressiveness [8,9].

*WWOX* behaves as a suppressor of tumor growth in some cancer lines [10-12]. Contradictory results were reported with *Wwox* KO mice that suffer from early life lethality; Aqeilan *et al.* reported osteosarcoma development in some *Wwox* KO newborn mice [13] whereas no neoplasias were detected in *Wwox* KO mice generated by our laboratory [14]. Furthermore, we recently demonstrated that no tumors develop spontaneously in mice targeted for conditional deletion of *Wwox* in the mammary gland [15]. Interestingly, *Wwox* ablation led to a significant inhibition of mammary gland ductal branching and impaired alveologenesis. Based on these studies, we concluded that *WWOX* does not behave as a classical tumor suppressor gene in the normal mammary gland. Therefore, in order to gain a better understanding of the role of *WWOX* in breast epithelium we investigated the cellular and molecular effects of modulating *WWOX* expression levels in normal, immortalized human breast cells.

## Methods

### Cell culture and reagents

All cell lines were obtained from the American Type Culture Collection (ATCC, Manassas, VA, USA) and validated by DNA fingerprinting. MCF10 cells (ATCC #CRL-10318) were cultured in DMEM/F12 supplemented with 5% fetal bovine serum, 100 µg/mL hydrocortisone, 10 µg/mL insulin, 20 ng/mL EGF, 1 ng/mL cholera toxin and 1% penicillin-streptomycin. MCF7 cells (ATCC #HTB-22) were cultured in modified IMEM supplemented with 10% fetal bovine serum. 184B5 cells (ATCC #CRL-8799) were cultured in MEM. Recombinant human TGFβ1 was purchased from R&D Systems.

### shRNA-mediated *WWOX* silencing in MCF10 cells

Cells were infected with the following shRNA-expressing GIPZ lentiviruses (Open Biosystems) at an MOI of 5: scrambled control shRNA (RHS4348), sh*WWOX*-A (V2LHS\_255213); sh*WWOX*-B (V2LHS\_255229) or sh*WWOX* (V2LHS\_255213 and V2LHS\_255229). Cells were infected according to manufacturer's instructions. Stably *WWOX* silenced cells and controls were selected with 2 µg/ml puromycin and *WWOX* protein level was assayed by western blot.

### Doxycycline-inducible *WWOX* expression system and other transient transfections

pLVX-Tight-Puro from Clontech's Tet-on advance system (Clontech, Mountain View, CA) was used to construct inducible *WWOX* expression. Full-length human *WWOX* cDNA was amplified and inserted using BamH1/EcoR1 restriction enzyme sites. Lentiviral stocks were made according to manufacturer's protocol. MCF10 cells were either stably or transiently infected by the lentiviruses carrying the target cassettes and subjected to selection with 2 µg/ml puromycin. One µg/ml of doxycycline were used to induce *WWOX* expression.

Transient transfections were performed using FuGene 6 transfection reagent (Promega) and plasmids used were: pCMV5b-FLAG-*SMAD3* (Addgene plasmid 11742) [16], 3TP-LUX (Addgene plasmid 11767) [17], pRL Renilla luciferase and pcDNA-Myc-*WWOX*.

### Microarray data processing, bioinformatics and statistical analyses

Total RNA was extracted from 3 biological replicates each of MCF10 scrambled (Scr), MCF10 sh*WWOX*-A and MCF10 sh*WWOX*-B using the RNeasy Mini kit (Qiagen). Briefly, 2 µg of RNA from each of *WWOX*-silenced sublines labeled with Cy5 were individually hybridized on Agilent Whole Human Genome 4X44K microarrays to analyze ~40000 transcripts (Agilent Technologies, Palo Alto, CA, USA) using the RNA derived from the corresponding MCF10 Scr sample (labeled with Cy3) as reference. For RNA labeling, we used the Quick Amp Kit (Agilent Technologies, Palo Alto, CA) by following the manufacturer's protocol. The hybridization steps were carried out according to the Agilent protocol and images were scanned using a Genepix 4000B microarray scanner (Axon Instruments, Foster City, CA, USA). Image analysis and initial quality control were performed using Agilent Feature Extraction Software v10.2. Raw datasets have been submitted to NCBI GEO database with accession number GSE47371. We used the limma Bioconductor package for background adjustment (normexp method), within (Loess algorithm) and between (quantiles method) arrays normalization [18]. To identify significantly up- or down-modulated genes

within the hybridized samples (MCF10 shWVOX-A vs. Scr and MCF10 shWVOX-B vs. Scr) we employed the one-class Rank Products' test ( $q$ -value < 0.05; Fold change > 2) [19]. Statistical analyses were done with the MultiExperiment Viewer software (MeV 4.8) [20]. Differentially expressed genes derived from both analyses were compiled into one Excel spreadsheet pivot Table for comparison of overlapping data between MCF10 shWVOX-A and MCF10 shWVOX-B WVOX sub-lines. The number and identity of genes commonly affected in both models was determined. We used the normal approximation to the binomial distribution as previously described [21] to calculate whether the number of matching genes derived from each pairwise comparison was of statistical significance ( $q < 0.05$ ). Datasets were then uploaded to IPA software for automated functional annotation and gene enrichment analysis [22]. In addition, we employed Enrichr online resource [23] for ChIP enrichment analysis [24].

#### Clonal growth, attachment and cell motility assays

For clonal growth assays, 500 cells were plated into individual wells of a 6-well plate. After 9 days of culture, colonies were fixed and stained with crystal violet. Digital images were used to determine the number and area of growing colonies using ImageJ software 1.46 (NIH).

For attachment assays, cells ( $4 \times 10^4$  per well) were seeded in serum-free medium on fibronectin, collagen IV or laminin-coated 96-well plates (BD-BioCoat; BD) and incubated for 120 min at  $37^\circ\text{C}/5\% \text{CO}_2$ . Adherent cells were fixed at different time-points by adding a cold 10% TCA solution and then processed according to the sulforhodamine B (SRB) assay (Sigma-Aldrich).

To assess cell motility we conducted a standard wound-healing assay. Briefly,  $1 \times 10^6$  cells were seeded in each well. After cells adhered the FBS concentration in the medium was reduced to 2% to decrease cell proliferation. Two scratch wounds were made in each well. Images of the same fields were collected at 0 and 24 hrs. Wound area expressed as percent of field of view was quantified using the ImageJ software.

#### Real-time Q-PCR, ELISA, Western blotting and antibodies

RNA isolation and Real-time PCR was performed as previously described [15]. Real-time assays were performed using Sybr Green and the following primer sets: FST F 5'-GCCACCTGAGAAAGGCTACC-3', FST R 5'-TTACTGTCAGGGCAGAGCTC-3', ANGPTL4 F 5'-CACAGCCTGCAGACACAAC-3', ANGPTL4 R 5'-AAACTGGCTTTGCAGATGCT-3', PTHLH F 5'-CGCTCTGCCTGGTTAGACTC-3', PTHLH R 5'-AGATCCTGCAATATGTCCTTGG-3', SERPINE1 F 5'-GACCGCAACGTGGTTTCTC-3', SERPINE1 R 5'-CATC

CTTGTTCCATGGCCCC-3', 18S rRNA F 5'-ACGGAA GGCACCACCAGG-3' and 18S rRNA R 5'-CACCAAC TAAGAACGGCCATGC-3'. Experiments were done in triplicate and normalized to 18S rRNA expression.

Levels of FST and ANGPTL4 proteins in conditioned medium were determined using the FST Quantikine ELISA kit and the ANGPTL4 DuoSet ELISA kit (R&D Systems) according to manufacturer's protocols. Briefly,  $4 \times 10^5$  cells were seeded in phenol red-free DMEM/F12 medium supplemented with charcoal-stripped serum (5%) and adequate growth factors under normal conditions for 72 hrs before collection of conditioned medium.

Western blotting was performed under standard conditions by loading 20  $\mu\text{g}$  of total protein per lane and transferring to PVDF membranes. Primary antibodies used were: rabbit anti-WVOX (Aldaz lab), rabbit anti-SMAD3 (Cell Signaling), mouse anti-actin (Sigma-Aldrich) and mouse anti-Myc (Origene). Secondary antibodies used were: anti-rabbit HRP (Jackson Labs) anti-mouse HRP (K&P Labs), anti-rabbit Alexa 594 and anti-mouse Alexa 488 (Invitrogen).

#### Co-immunoprecipitation, GST-pulldowns and Luciferase assays

For co-immunoprecipitation, cells were lysed with a buffer containing 50 mM Tris-HCl pH 7.4, 100 mM NaF, 10 mM EDTA, 10 mM  $\text{Na}_3\text{VO}_4$ , 2 mM PMSEF, 1% NP-40 and 0.5% TritonX-100. Immunoprecipitations were carried out with Protein A/G beads and washed five times in the same buffer. Construction and purification of GST fusion proteins was performed as previously described [25]. Pull-down assays were performed using immobilized purified GST or GST fusion proteins incubated with total cell lysate from MCF10 cells transfected with 1  $\mu\text{g}$  of pCMV5b-Flag-SMAD3 plasmid for 48 hours.

For luciferase assays, MCF10 cells stably infected with the described Dox-inducible WVOX expression system were exposed to 1  $\mu\text{g}/\text{mL}$  doxycycline for two days (or no treatment). Cells were then co-transfected with 3TP-LUX and pRL Renilla luciferase expressing control vector. Serum-free media was applied and cells were then exposed to 10 ng/mL TGF $\beta$ 1 (or vehicle treatment) for 8 hours. Luciferase assays were performed according to Dual-Luciferase Assay protocol (Promega).

#### Chromatin immunoprecipitation (ChIP)

MCF10 cells transiently infected with the described Dox-inducible WVOX expression system were exposed to 1  $\mu\text{g}/\text{mL}$  Dox for one day (or no treatment), changed to serum-free media for 16 hours then exposed to 10 ng/mL TGF $\beta$ 1 for 4 hours (or vehicle treatment). ChIP was performed as described elsewhere [26].

Real-time PCR was performed to assay SMAD3 occupation at promoter elements via the percent input method.

Primers used for CHIP qPCR for the region 2000 bases upstream from the *ANGPTL4* transcriptional start site were: F: 5'-GATTGCTGTCCTGGCATCT-3' and R: 5'-CTCCAAGCCAGCTCATTCTC-3'. Primers for the SMAD binding element of the *SERPINE1* promoter were: F: 5'-GGGAGTCAGCCGTGTATCAT-3' and R: 5'-TAGGTTTTGTCTGTCTAGGACTTGG-3' [27].

### Confocal microscopy

Cells transiently transfected with pcDNA-Myc-*WWOX* were seeded on round, glass coverslips in 12-well plates, serum starved for 12 hours, treated with 20 ng/ $\mu$ L TGF $\beta$ 1 for 1 hour, fixed for 15 min in 4% PBS-buffered paraformaldehyde, permeabilized with 0.05% Triton X-100 in PBS (PBS-T) for 5 min, blocked with 1% bovine serum albumin (BSA), and incubated with rabbit anti-SMAD3 (Cell Signaling) overnight at 4°C then mouse anti-Myc (Origene) for one hour at room temperature. AlexaFluor-conjugated secondary antibodies were applied for 2 hours at room temperature. Cells were washed three times in PBS-T, DAPI solution applied, washed three more times then mounted in Prolong Gold Anti-Fade (Invitrogen) on a microscope slide. Confocal microscopy was done on a Zeiss LSM510 META confocal microscope with 100X plan-apochromatic objective and oil immersion. Images were acquired in sequential mode and single-color controls were used to verify absence of crosstalk and bleed-through.

### *WWOX* and *ANGPTL4* expression meta-analysis in breast cancer datasets

To perform a comparative analysis of *WWOX* and *ANGPTL4* expression in breast cancer, we analyzed 819 primary carcinomas obtained from three independent studies available in public databases. The fRMA pre-processed expression matrixes of the studies GSE26639 (n = 226), GSE21653 (n = 266), and GSE20685 (n = 327) were downloaded from the InSilico database [28]. These gene expression profiles were obtained using the Affymetrix HG U133 Plus2 platform (GPL570). *WWOX* and *ANGPTL4* mRNA expression levels were estimated by using the mean expression values of the Affymetrix probes for each gene. We employed the Gaussian Mixture Model to identify bimodal distributions in the expression levels of both genes [29]. Heatmap visualization of *WWOX* and *ANGPTL4* expression profiles was done with the MultiExperiment Viewer software (MeV 4.8).

## Results

### *WWOX* silencing in breast cells affects clonal growth, adhesion and motility

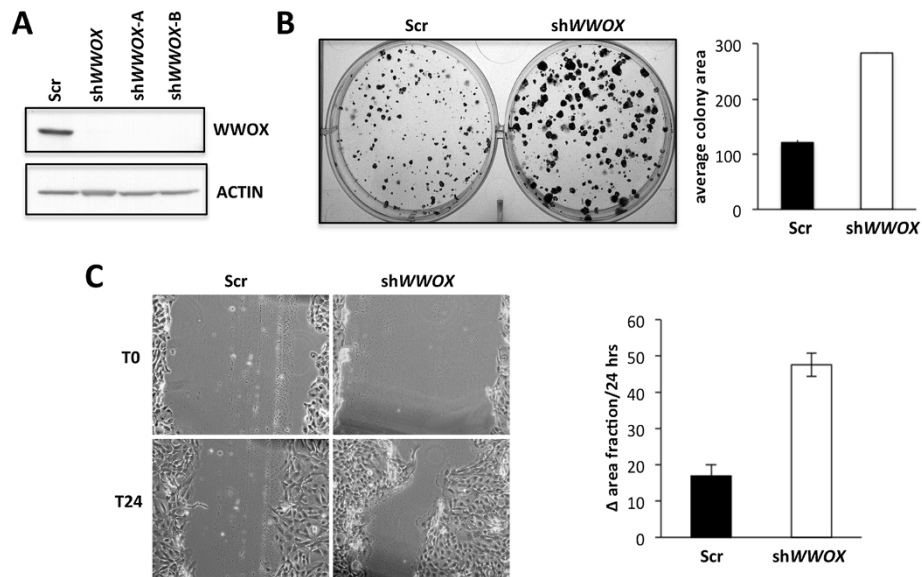
In order to gain insight into the consequences of loss of *WWOX* expression we investigated the effects of *WWOX* silencing in normal breast epithelial cells. To this end, we

used an shRNA-mediated approach to stably knockdown expression of *WWOX* in the normal human breast cell line MCF10. Three independent stable *WWOX* shRNA-expressing cell lines were generated (sh*WWOX*, sh*WWOX*-A and sh*WWOX*-B) and one scrambled shRNA control. All three stably *WWOX*-silenced cell lines showed a decrease of 80-90% *WWOX* protein expression levels (Figure 1A).

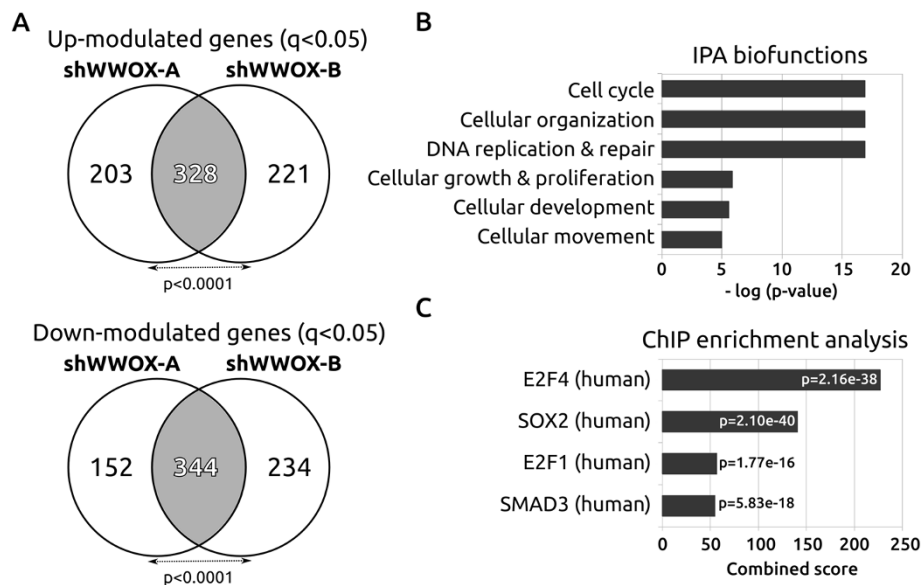
We first investigated the effects of *WWOX* silencing on the clonal growth of the MCF10 cells. We did not detect differences in clonogenicity (i.e. number of colonies) but found that MCF10 *WWOX*-silenced cells proliferate more rapidly forming larger colonies than their control scrambled shRNA counterparts (Figure 1B). *WWOX*-silenced cells also displayed decreased attachment to extracellular matrix components such as laminin, collagen IV and fibronectin (Additional file 1) and were significantly more motile, repopulating the wound faster in the scratch wound-healing assay when compared with controls (Figure 1C). In summary, our data suggests that *WWOX* ablation influences cell proliferation, adhesion and motility of breast cells.

### Gene expression changes in normal human breast cells silenced for *WWOX* expression

To determine global gene expression changes as a result of *WWOX* silencing in normal human breast cells we performed microarray studies. We compared two independent shRNAs (sh*WWOX*-A and sh*WWOX*-B) targeting different regions of the *WWOX* transcript as a means of ruling out any potential off-target effects. The statistical analysis of the sh*WWOX*-A and sh*WWOX*-B gene expression profiles identified 328 commonly up-modulated and 344 commonly down-modulated genes (q value < 0.05) in the two *WWOX* stably silenced cell lines (Figure 2A) (Additional file 2). We used the Ingenuity Pathway Analysis (IPA) resource for automated annotation and classification of the common differentially expressed genes. Among the statistically significant top biofunctions deregulated in *WWOX*-silenced cells, we identified cell cycle/proliferation, DNA replication, recombination and repair as well as cellular movement (Figure 2B). These biofunctions were consistent with the results from our phenotypic assays as markers of proliferation such as *MKI67* and *PCNA* were both significantly upregulated in *WWOX* silenced cells (Additional file 2). To identify affected transcriptional regulatory networks, we performed a CHIP enrichment analysis (ChEA) from the commonly deregulated gene list. Briefly, ChEA identifies over-representation of transcription factor targets from a mammalian CHIP-X database [24]. ChEA allowed us to identify a set of transcription factors that are the most likely to have regulated *WWOX* associated gene expression changes. We detected a statistically significant



**Figure 1 Silencing of WWOX results in increased clonal growth, decreased attachment and increased cell motility. (A)** Western blot demonstrating WWOX silencing in cell extracts from MCF10 control (Scr) and three independent stably WWOX-silenced cell lines. **(B)** Effect of WWOX-silencing on clonal growth. Five hundred cells were seeded in each well of a 6-well plate for each subline and allowed to grow for 9 days. Representative image of both conditions is shown. Bar graph represents the average of three independent experiments  $\pm$  SEM. **(C)** Scratch wound healing assay. Results of four separate experiments done in biological triplicates (two wounds per well). Depicted is the average percent of the difference between T0 and T24 from all experiments ( $\pm$ SEM).



**Figure 2 Effects of WWOX silencing on gene expression. (A)** Venn diagram showing the overlap between transcripts up- or down-modulated in two independent WWOX-silenced MCF10 sublines (fold-change  $> 2.0$ ,  $q < 0.05$ ). **(B)** Top predicted biofunctions deregulated in WWOX-silenced cells. Bar graph represents  $-\log(p\text{-value})$  for each biofunction. Biofunction prediction from IPA software. **(C)** ChIP enrichment analysis (ChEA) from the commonly deregulated gene list. Bars represent the four transcription factors with the highest combined scores calculated by the Enrichr resource, i.e. transcription factors more likely associated with the majority of gene expression changes observed (see also Additional file 2).

enrichment of E2F family members, SOX2 and SMAD3 gene targets (Figure 2C) (Additional file 2).

### Upregulation of SMAD3 target genes in WWOX silenced cells

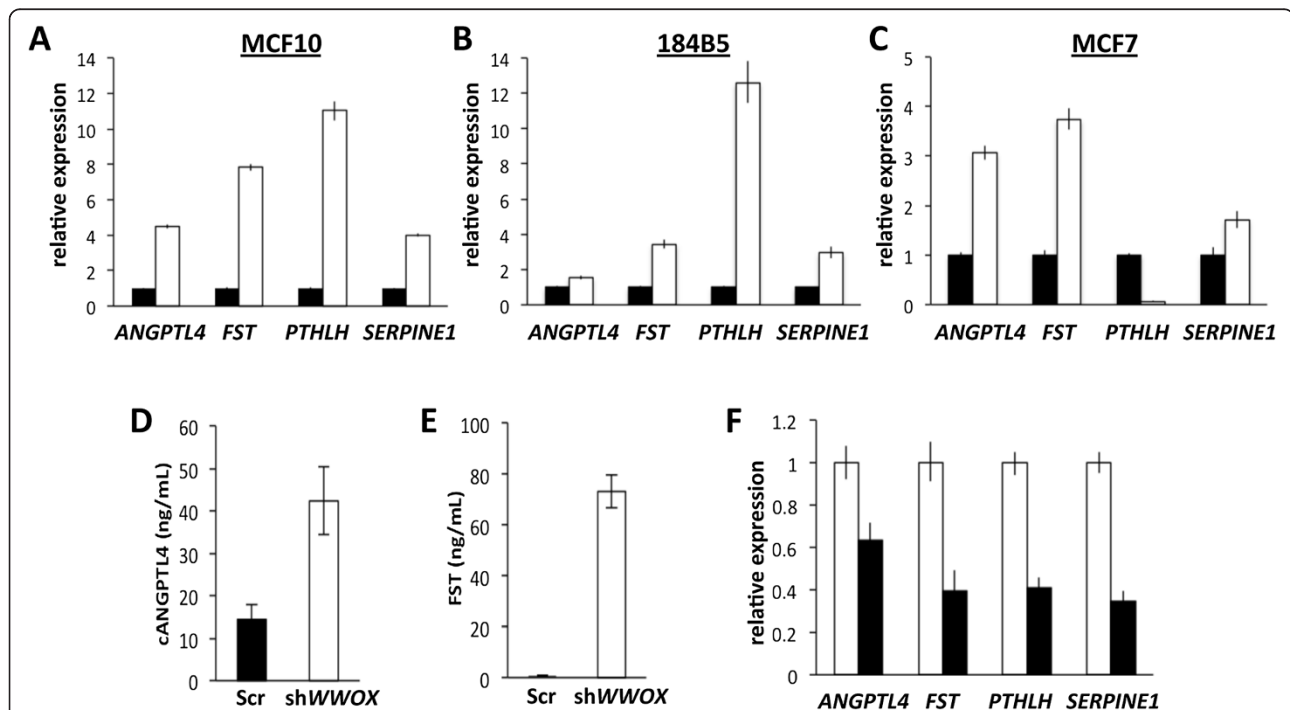
Interestingly, of the top 25 most upregulated genes in WWOX-silenced cells 40% were SMAD3 target genes (Additional file 2). Thus, SMAD3 appears as one of the top transcriptional regulators likely responsible for many of the gene expression changes detected by our microarray analysis. Among the group of most significantly upregulated SMAD3 target genes we identified: *FST* (5.2 fold), *PTHLH* (3.6 fold), *ANGPTL4* (3.5 fold) and *SERPINE1* (2.5 fold). Real Time RT-PCR validations are shown in Figure 3A. In order to explore whether this finding was exclusive of MCF10 cells, we stably silenced WWOX expression in another normal breast epithelial cell line (184B5) and a breast cancer line (MCF7). Interestingly, we observed a similar SMAD3 target gene upregulation induced by WWOX silencing in those two breast derived cell lines as well (Figure 3B-C).

Since the four aforementioned SMAD3 target genes all produce secreted proteins, we tested by ELISA the production of two of these proteins (*ANGPTL4* and *FST*) and detected significant increased secretion of these proteins in cultured media from WWOX silenced cells (Figure 3D-E).

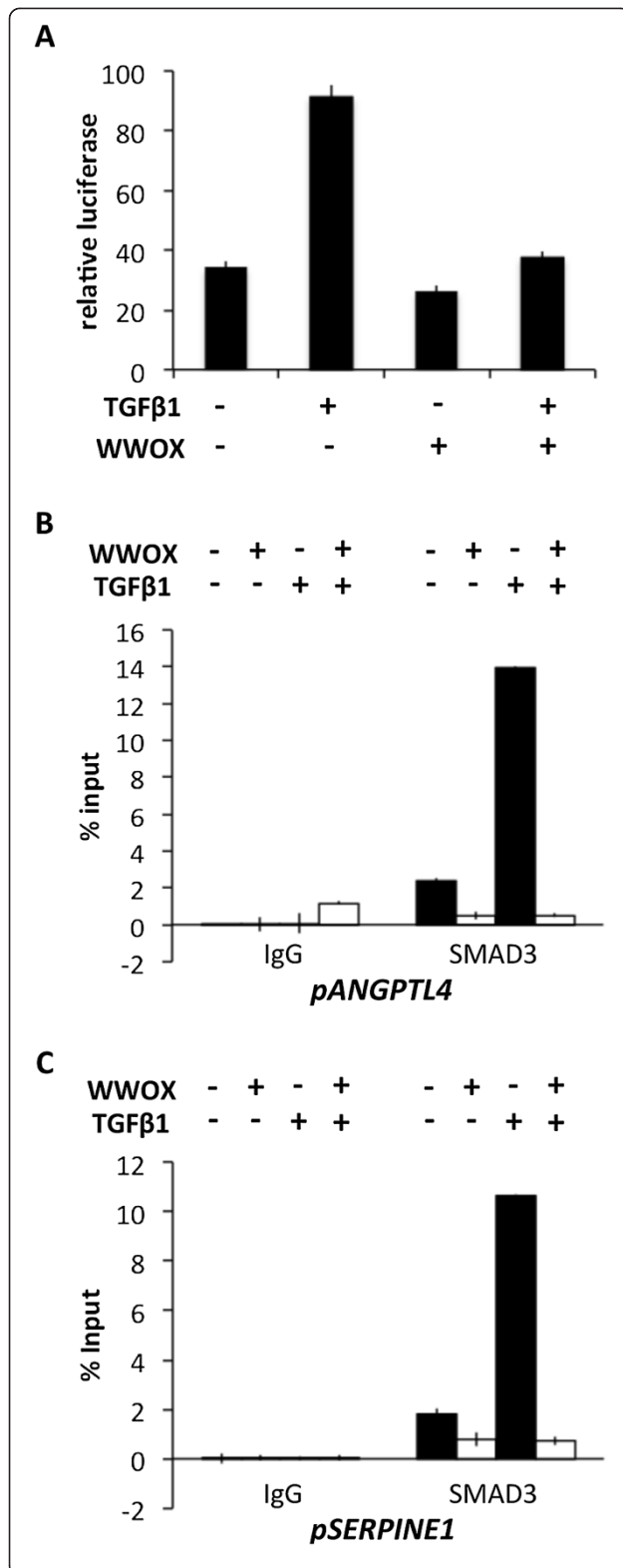
To further investigate whether transcription of these genes is regulated by WWOX expression status we transiently transduced MCF10 WWOX-silenced cells with a lentiviral, WWOX doxycycline-inducible system. We determined that mRNA levels of each of the four genes assayed decrease significantly when WWOX protein is re-expressed (Figure 3F). Overall we demonstrate that WWOX expression status influences the expression of subsets of SMAD3-regulated genes.

### WWOX inhibits TGFβ induced transcriptional activation and decreases SMAD3 promoter occupancy

Since SMAD3 is a known TGFβ activated transcription factor we investigated whether WWOX affects TGFβ-dependent transcription using the 3TP-LUX luciferase reporter. This plasmid contains a strong TGFβ-responsive



**Figure 3 WWOX silencing results in increased expression of SMAD3 target genes.** (A-C) Validation of increased gene expression of SMAD3-regulated genes in MCF10 (A) shWWOX subline (white bars) compared to Scr shRNA control (black bars) by Real Time qPCR. mRNA from three biological replicates of each stable cell line were used for quantitation, 18S rRNA was used as normalization control, ( $p < 0.01$  for all genes). Further real-time PCR validation of SMAD3 target upregulation in WWOX-silenced (shWWOX-B, white bars) or Scr shRNA control (black bars) 184B5 normal breast cells (B) or MCF7 breast cancer cells (C). Significant upregulation was seen for all target genes in all WWOX-silenced samples with the exception of *PTHLH* expression in MCF7 cells. (D) ELISA assay for quantitation of ANGPTL4 protein concentration in culture media from each MCF10 subline after 72 hours in culture ( $p < 0.01$ ). (E) ELISA assay for FST protein concentration in culture media from MCF10 sublines. (F) Reversion of SMAD3 target gene upregulation by inducible ectopic WWOX expression in MCF10 shWWOX-A cells. Real-Time PCR analysis of MCF10 shWWOX-A cells transiently transduced with a DOX-inducible WWOX expression system. With induction of ectopic WWOX expression (black bars) or without WWOX expression (white bars). 18S rRNA used as normalization control ( $p < 0.05$  for all genes).



**Figure 4 WWOX inhibits TGFβ-dependent transcription and decreases SMAD3 occupancy at target gene promoters.**

(A) 3TP-LUX luciferase reporter assay in MCF10 cells treated with or without doxycycline to induce WWOX expression and with or without TGFβ1 for 8 hours as indicated. Experiment done in triplicate. (B-C) Chromatin immunoprecipitation of SMAD3 (or IgG control) followed by qPCR in MCF10 cells transiently infected with the doxycycline-inducible WWOX expression lentivirus system. Primers used for qPCR span SMAD binding elements in the *ANGPTL4* promoter (B) or the *SERPINE1* promoter (C). Error bars represent SD for all graphs.

element from the *SERPINE1* (also known as Plasminogen Activator inhibitor, PAI) promoter and is routinely used to assay TGFβ signaling [17]. Indeed, we found that dox-inducible expression of WWOX protein in MCF10 cells significantly quenched TGFβ-dependent luciferase expression (Figure 4A).

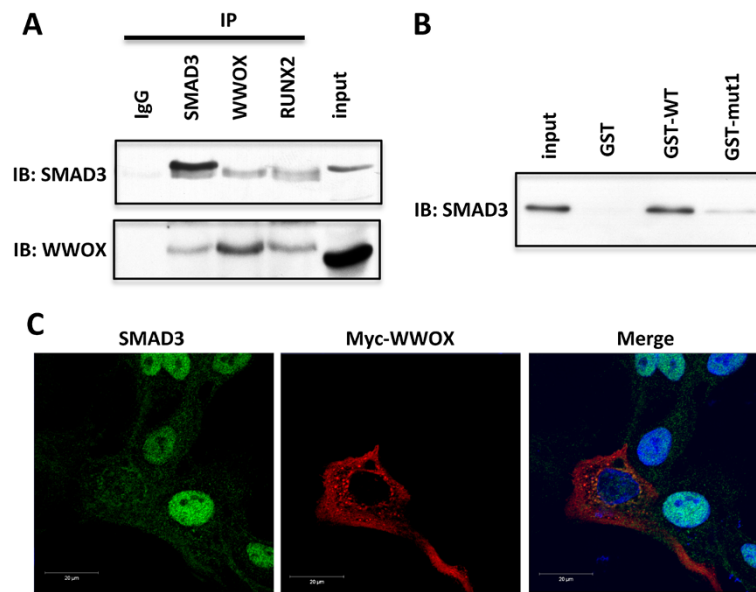
We then asked whether WWOX expression in MCF10 cells would affect binding of SMAD3 to known DNA responsive elements on the *ANGPTL4* and *SERPINE1* promoters [27]. Using chromatin immunoprecipitation (ChIP) we observed, as expected, a significant increase in SMAD3 presence at both promoters upon TGFβ1 treatment. However, when WWOX expression was induced we found a dramatic loss of SMAD3 occupancy at both promoters (Figure 4B-C). These results demonstrate that WWOX protein expression affects SMAD3 protein availability for binding effector promoter elements both in the idle state and upon TGFβ1 stimulation.

#### WWOX interacts with SMAD3 via WW domain 1

The first WW domain of WWOX is a Class I WW domain known to bind to PPXY motifs on target proteins in a phosphorylation-independent manner [25,30]. Since the SMAD3 protein contains a <sup>181</sup>PPGY<sup>184</sup> motif we investigated whether WWOX and SMAD3 proteins physically interact. Indeed co-immunoprecipitation of endogenous WWOX and SMAD3 proteins from MCF10 cell extracts demonstrates a strong interaction between the two proteins (Figure 5A). The SMAD3 coactivator RUNX2 is known to bind both SMAD3 and WWOX [31,32] thus it was used as a positive control for both co-immunoprecipitations. To determine whether the observed interaction is dependent upon WW1 domain of WWOX, GST-pulldown experiments were performed. We observed that SMAD3 from MCF10 whole cell lysates readily binds to the wild type WW domains of WWOX but the interaction is lost when the first WW domain is mutated (W44F/P47A) (Figure 5B).

#### WWOX expression induces intracellular SMAD3 redistribution

WWOX is a cytoplasmic protein [10,25] while SMAD3 is predominantly found in the nuclear compartment. To



**Figure 5 WWOX binds to SMAD3 and relocates it to the cytoplasm. (A)** Co-immunoprecipitation of endogenous WWOX and SMAD3 from MCF10 cells. Whole cell lysates were immunoprecipitated with either rabbit IgG (control), anti-WWOX, anti-SMAD3 or anti-RUNX2 antibodies. The immunoprecipitates were immunoblotted with anti-WWOX and anti-SMAD3 antibodies as indicated. RUNX2 co-IP was used as a positive control for both WWOX and SMAD3 interactions. **(B)** MCF10 cells were transfected with Flag-SMAD3 and pull-downs were performed with the indicated GST fusion proteins either wild-type WW1 and 2 domains (GST-WT) or mutant WW1 (W44F/P47A) (GST-mut1) or GST alone. Bound protein was detected by SMAD3 immunoblot. **(C)** Confocal microscopy of MCF10 cells transfected with pcDNA-Myc-WWOX and treated with TGFβ1. Note how SMAD3 (green) localizes to the nucleus in cells with no Myc-WWOX expression (red) but undergoes intracellular redistribution mostly to the cytoplasmic compartment in cells with ectopic WWOX expression (red). Images taken using a Zeiss LSM510 META confocal microscope and the 100X objective.

determine whether WWOX affects SMAD3 protein subcellular localization, we used confocal microscopy to analyze SMAD3 intracellular distribution with or without WWOX ectopic expression. As expected, in MCF10 cells treated with TGFβ1, we found a predominantly nuclear staining for SMAD3 (Figure 5C). Interestingly however, induction of WWOX expression led to a cellular redistribution of SMAD3 protein levels shifting from the nuclear to the cytoplasmic compartment and perinuclear colocalization with WWOX.

#### WWOX and ANGPTL4 are inversely correlated in breast cancer and the *Wwox*<sup>lo</sup>/*ANGPTL4*<sup>hi</sup> cluster is enriched in TNBC and basal-like cancers

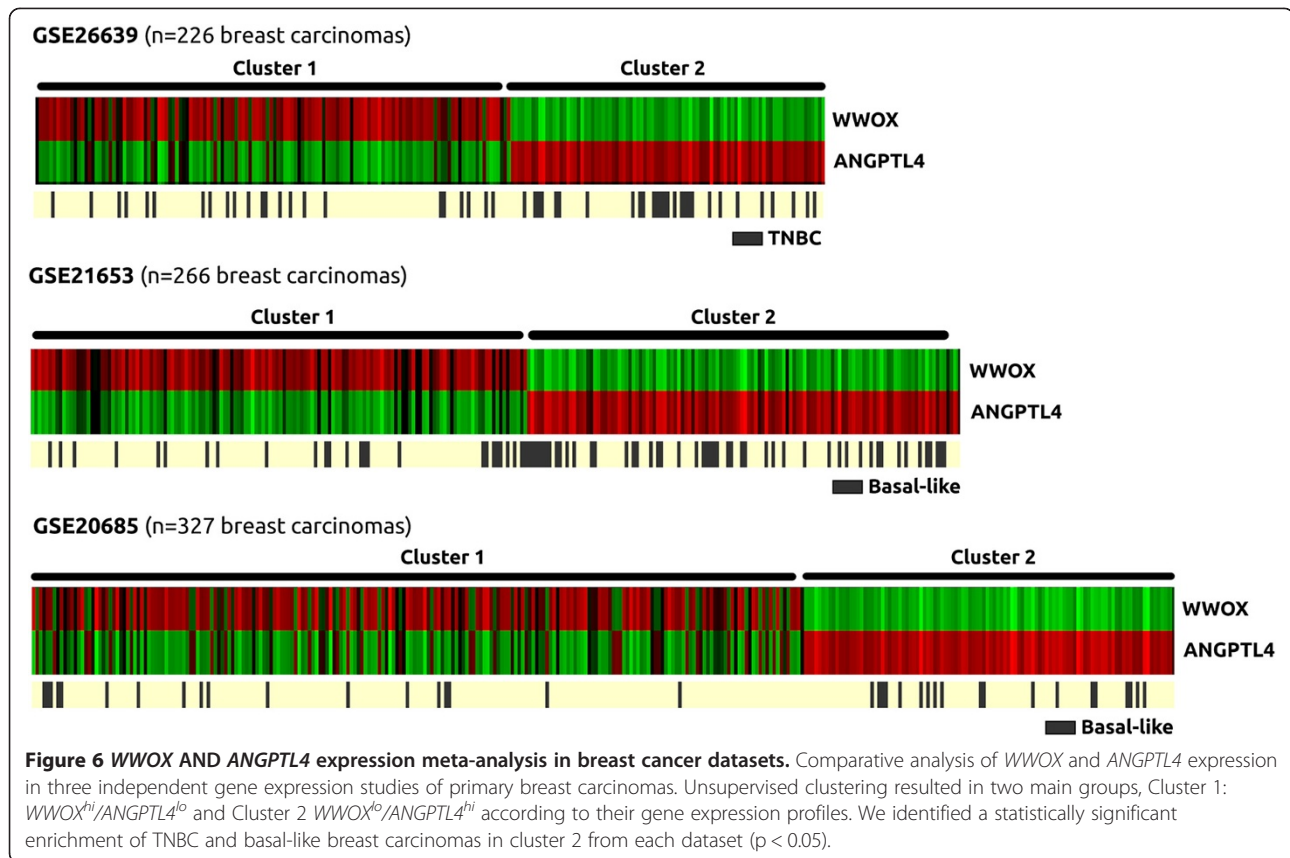
Given the relevance of ANGPTL4 as a key determinant of lung metastatic phenotypes for breast cancer cells [33,34] and our observations of a clear inverse behavior between WWOX and ANGPTL4 at the transcript and protein level, we investigated whether this inverse relationship extended to breast cancers. To this end we performed a meta-analysis using three independent gene expression breast cancer datasets representing a total of 819 breast carcinoma samples. Unsupervised clustering of these samples showed the emergence of two defined clusters, cluster 1: *WWOX*<sup>hi</sup>/*ANGPTL4*<sup>lo</sup> and cluster 2: *WWOX*<sup>lo</sup>/*ANGPTL4*<sup>hi</sup> representative of a statistically

significant negative correlation between *WWOX* and *ANGPTL4* expression (Figure 6). Further analysis of breast tumor subtypes determined that the *WWOX*<sup>lo</sup>/*ANGPTL4*<sup>hi</sup> cluster demonstrates a significant enrichment of triple-negative breast cancer (TNBC) and basal-like tumors (Cluster 2,  $p < 0.05$ ). Overall, our analysis reveals a significant inverse correlation between *WWOX* and *ANGPTL4* transcript levels in breast cancer patient samples and that tumors with the *WWOX*<sup>lo</sup>/*ANGPTL4*<sup>hi</sup> signature correlate with breast cancer subtypes characterized by poor prognosis.

#### Discussion

It is clear that expression of WWOX is lost in breast cancer and that this loss becomes more frequent as the disease progresses [8,9,35,36]. Thus, we feel it is important to understand the functions of WWOX in normal breast cells and the effects of loss of expression of this protein in breast cancer progression. In this study, we have described the multiple consequences of *WWOX* silencing in normal human breast cells. *WWOX* knockdown leads to a pro-transformation phenotype with increased proliferation, decreased attachment to ECM substrates and increased cell motility. These phenotypes were supported by corresponding changes in gene expression as genes involved in cell cycle, DNA damage response and cell





motility were found deregulated in *WWOX* silenced cells.

ChIP enrichment analysis identified SMAD3 as one of the most over-represented transcription factors responsible for many of the observed gene expression changes. Well known SMAD3 target genes such as *FST*, *ANGPTL4*, *PTHLH* and *SERPINE1* were found significantly upregulated upon *WWOX* silencing. Interestingly, *ANGPTL4*, *PTHLH* and *SERPINE1* have all been shown to be involved in breast cancer progression and metastasis [33,37,38]. We observed that these specific gene expression changes detected in *WWOX* knockdown cells can be reverted upon *WWOX* re-expression. Furthermore, we showed that *WWOX* protein expression significantly decreases SMAD3 promoter occupancy at target DNA elements and significantly decreases the response of a TGF $\beta$  luciferase reporter.

These observations lead us to investigate whether *WWOX* and SMAD3 physically interact with each other. Indeed, we demonstrate for the first time that *WWOX* is able to bind SMAD3 via the first WW domain and likely modulates SMAD3 transcriptional activity by cytoplasmic sequestration.

The effect of TGF $\beta$  signaling in breast cells has been described as paradoxical since it acts as an inhibitor of growth in normal mammary epithelium [39] but transitions

to being an enhancer of tumor progression in advanced breast cancer stages [40-42]. The mechanisms behind this dichotomous behavior are poorly understood [43]. In normal mammary epithelial cells TGF $\beta$  inhibits cell growth by inducing the expression of cell cycle inhibitors such as *CDKN2B* (*p15*) and *CDKN1A* (*p21*) and repressing the expression of cell cycle activators such as *MYC* [44-46]. On the other hand, in advanced-stage breast cancer the growth inhibitory effects of genes such as *p15* and *p21* are no longer effective and different subsets of pro-oncogenic and pro-metastatic genes are activated by TGF $\beta$  [40-42]. In fact the majority of breast cancers demonstrate active signaling through the TGF $\beta$  pathway and some tumors secrete high levels of TGF $\beta$  [40].

SMAD protein family members are known to be regulated by a number of WW-domain containing proteins such as YAP, PIN1, NEDD4L and SMURF1/2 [47,48]. YAP and PIN1 interact with SMADs in a phosphorylation-dependent manner and stabilize SMAD-cofactor binding at promoter elements to enhance transcriptional effects [47]. NEDD4L and SMURF1/2 are E3 ubiquitin ligase proteins responsible for SMAD protein turnover [43,47]. *WWOX*, also a WW domain containing cytoplasmic protein, is known to physically interact with the PPXY motif of various transcription factors via such domains and it has been postulated that one of its mechanisms of action

is to impede nuclear translocation, thus regulating their transcriptional activity [5,49]. In this study, we propose that *via* the same mechanism WWOX acts as an inhibitor of TGF $\beta$  signaling by binding to SMAD3 and modulating nuclear translocation of this transcription factor, thus reducing promoter occupation and transcriptional activation. In the absence of WWOX, a condition that emulates advanced breast cancer, SMAD3 can enter the nucleus uninhibited. Promoter specificity and activation of pro-metastatic genes such as *ANGPTL4*, *PTHLH* and *SERPINE1*, depends on SMAD3 interaction with specific transcriptional co-activators such as RUNX2. RUNX2 is a SMAD3 coactivator that has been shown to induce EMT [50] and pro-metastatic genes such as *ANGPTL4* [33] in a TGF $\beta$ -dependent manner. Interestingly, it has been previously demonstrated that WWOX also binds to RUNX2 (Figure 5A) and modulates its transcriptional activity [32]. The ability of WWOX to affect the transcriptional activity of not only SMAD3 but also of a key transcriptional cofactor such as RUNX2 suggests that the presence or absence of WWOX could be critical for modulating TGF $\beta$  signaling and, more importantly, for the activation or repression of specific transcriptional targets known to be associated with tumor progression. Interestingly, our breast cancer gene expression meta-analysis indicates an inverse correlation between WWOX and *ANGPTL4*. Furthermore, tumors with the WWOX<sup>do</sup>/*ANGPTL4*<sup>hi</sup> signature correlate with breast cancer subtypes characterized by poor prognosis. Thus, the WWOX<sup>do</sup>/*ANGPTL4*<sup>hi</sup> breast cancer subset could represent good candidates for exploring anti-TGF $\beta$  therapeutic approaches.

## Conclusions

Loss of WWOX expression leads to significant upmodulation of SMAD3 transcriptional activity leading to overexpression of multiple gene targets associated with breast cancer progression. WWOX directly binds SMAD3 via WW domain 1 and inhibits its transcriptional activity by sequestering this transcription factor in the cytoplasmic compartment.

In summary, we hypothesize that the progressive loss of WWOX expression in advanced breast cancer contributes to deregulating the TGF $\beta$  pathway and, more importantly, may explain some of the pro-metastatic effects resulting from TGF $\beta$ /SMAD3 hyperactive signaling in advanced breast cancer.

## Additional files

**Additional file 1: WWOX silencing in MCF10 cells results in decreased attachment to extracellular matrix substrates.** Attachment of MCF10 Scr control or shWWOX cells to laminin, collagen or fibronectin matrices.

**Additional file 2: Microarray gene expression data and CHIP Enrichment Analysis data from WWOX-silenced MCF10 cells.** Genes up- or down-regulated in WWOX-silenced cells and the ChEA data of predicted transcription factors affected by WWOX silencing.

## Abbreviations

WWOX: WW-domain containing oxidoreductase; ANGPTL4: Angiotensin-like 4; FST: Follistatin; PTHLH: Parathyroid hormone-like hormone; SERPINE1: Serpin peptidase inhibitor, clade E, member 1; TGF $\beta$ : Transforming growth factor  $\beta$ ; DMEM: Dulbecco's modified Eagle's medium; IMEM: Minimum Essential Medium; MEM: Mammary epithelial basal medium; MOI: Multiplicity of infection.

## Competing interests

The authors declare that they have no competing interests.

## Authors' contributions

CMA and BWF contributed the conception of the project and the design of all experiments. Experiments were conducted by BWF, XG, MJZ and JL. CRJ contributed confocal microscopy expertise. MCA carried out all bioinformatic analyses. BWF, MCA and CMA wrote the main body of the manuscript. All authors read and gave their final approval for the manuscript.

## Acknowledgements

This study was supported by the National Institutes of Health/National Cancer Institute [grant number R01 CA102444-8] to [CMA]; Research Training in Carcinogenesis and Mutagenesis [grant number T32CA009480] to [BWF] and Cancer Center Support Grant [grant number CA016672].

## Author details

<sup>1</sup>Department of Molecular Carcinogenesis, Science Park, The University of Texas M.D. Anderson Cancer Center, Smithville, TX 78957, USA. <sup>2</sup>CINIBA, Facultad de Medicina, Universidad Nacional de La Plata, La Plata, Argentina.

Received: 29 July 2013 Accepted: 6 December 2013

Published: 11 December 2013

## References

1. Bednarek AK, Laffin KJ, Daniel RL, Liao Q, Hawkins KA, Aldaz CM: **WWOX, a novel WW domain-containing protein mapping to human chromosome 16q23.3-24.1, a region frequently affected in breast cancer.** *Cancer Res* 2000, **60**(8):2140-2145.
2. Ried K, Finnis M, Hobson L, Mangelsdorf M, Dayan S, Nancarrow JK, Woollatt E, Kremmidiotis G, Gardner A, Venter D, et al: **Common chromosomal fragile site FRA16D sequence: identification of the FOR gene spanning FRA16D and homozygous deletions and translocation breakpoints in cancer cells.** *Hum Mol Genet* 2000, **9**(11):1651-1663.
3. Bignell GR, Greenman CD, Davies H, Butler AP, Edkins S, Andrews JM, Buck G, Chen L, Beare D, Latimer C, et al: **Signatures of mutation and selection in the cancer genome.** *Nature* 2010, **463**(7283):893-898.
4. Ramos D, Aldaz CM: **WWOX, a chromosomal fragile site gene and its role in cancer.** *Adv Exp Med Biol* 2006, **587**:149-159.
5. Aqeilan RI, Croce CM: **WWOX in biological control and tumorigenesis.** *J Cell Physiol* 2007, **212**(2):307-310.
6. Paige AJ, Taylor KJ, Taylor C, Hillier SG, Farrington S, Scott D, Porteous DJ, Smyth JF, Gabra H, Watson JE: **WWOX: a candidate tumor suppressor gene involved in multiple tumor types.** *Proc Natl Acad Sci U S A* 2001, **98**(20):11417-11422.
7. Bergsagel PL, Kuehl WM: **Chromosome translocations in multiple myeloma.** *Oncogene* 2001, **20**(40):5611-5622.
8. Nunez MI, Ludes-Meyers J, Abba MC, Kil H, Abbey NW, Page RE, Sahin A, Klein-Szanto AJ, Aldaz CM: **Frequent loss of WWOX expression in breast cancer: correlation with estrogen receptor status.** *Breast Cancer Res Treat* 2005, **89**(2):99-105.
9. Guler G, Uner A, Guler N, Han SY, Iliopoulos D, Hauck WW, McCue P, Huebner K: **The fragile genes FHIT and WWOX are inactivated coordinately in invasive breast carcinoma.** *Cancer* 2004, **100**(8):1605-1614.
10. Bednarek AK, Keck-Waggoner CL, Daniel RL, Laffin KJ, Bergsagel PL, Kiguchi K, Brenner AJ, Aldaz CM: **WWOX, the FRA16D gene, behaves as a suppressor of tumor growth.** *Cancer Res* 2001, **61**(22):8068-8073.

11. Qin HR, Iliopoulos D, Semba S, Fabbri M, Druck T, Volinia S, Croce CM, Morrison CD, Klein RD, Huebner K: **A role for the WWOX gene in prostate cancer.** *Cancer Res* 2006, **66**(13):6477–6481.
12. Nakayama S, Semba S, Maeda N, Aqeilan RI, Huebner K, Yokozaki H: **Role of the WWOX gene, encompassing fragile region FRA16D, in suppression of pancreatic carcinoma cells.** *Cancer Sci* 2008, **99**(7):1370–1376.
13. Aqeilan RI, Trapasso F, Hussain S, Costinean S, Marshall D, Pekarsky Y, Hagan JP, Zaneni N, Kaou M, Stein GS, *et al*: **Targeted deletion of Wwox reveals a tumor suppressor function.** *Proc Natl Acad Sci U S A* 2007, **104**(10):3949–3954.
14. Ludes-Meyers JH, Kil H, Parker-Thornburg J, Kusewitt DF, Bedford MT, Aldaz CM: **Generation and characterization of mice carrying a conditional allele of the Wwox tumor suppressor gene.** *PLoS One* 2009, **4**(11):e7775.
15. Ferguson BW, Gao X, Kil H, Lee J, Benavides F, Abba MC, Aldaz CM: **Conditional Wwox deletion in mouse mammary gland by means of two Cre recombinase approaches.** *PLoS One* 2012, **7**(5):e36618.
16. Labbe E, Silvestri C, Hoodless PA, Wrana JL, Attisano L: **Smad2 and Smad3 positively and negatively regulate TGF beta-dependent transcription through the forkhead DNA-binding protein FAST2.** *Mol Cell* 1998, **2**(1):109–120.
17. Wrana JL, Attisano L, Carcamo J, Zentella A, Doody J, Laiho M, Wang XF, Massague J: **TGF beta signals through a heteromeric protein kinase receptor complex.** *Cell* 1992, **71**(6):1003–1014.
18. Smyth GK: **limma: Linear Models for Microarray Data.** In *Bioinformatics and Computational Biology Solutions Using R and Bioconductor*. New York: Springer Verlag; 2005:397–420.
19. Breitling R, Armengaud P, Amtmann A, Herzyk P: **Rank products: a simple, yet powerful, new method to detect differentially regulated genes in replicated microarray experiments.** *FEBS Lett* 2004, **573**(1–3):83–92.
20. Saeed AI, Sharov V, White J, Li J, Liang W, Bhagabati N, Braisted J, Klapa M, Currier T, Thiagarajan M, *et al*: **TM4: a free, open-source system for microarray data management and analysis.** *Biotechniques* 2003, **34**(2):374–378.
21. Smid M, Dorssers LC, Jenster G: **Venn Mapping: clustering of heterologous microarray data based on the number of co-occurring differentially expressed genes.** *Bioinformatics* 2003, **19**(16):2065–2071.
22. Ingenuity Pathways Analysis. <http://www.ingenuity.com>.
23. Enrichr Online Resource. <http://amp.pharm.mssm.edu/Enrichr>.
24. Lachmann A, Xu H, Krishnan J, Berger SI, Mazloom AR, Ma'ayan A: **ChEA: transcription factor regulation inferred from integrating genome-wide ChIP-X experiments.** *Bioinformatics* 2010, **26**(19):2438–2444.
25. Ludes-Meyers JH, Kil H, Bednarek AK, Drake J, Bedford MT, Aldaz CM: **WWOX binds the specific proline-rich ligand PPXY: identification of candidate interacting proteins.** *Oncogene* 2004, **23**(29):5049–5055.
26. Naruhn S, Meissner W, Adhikary T, Kaddatz K, Klein T, Watzter B, Muller-Brusselbach S, Muller R: **15-hydroxyeicosatetraenoic acid is a preferential peroxisome proliferator-activated receptor beta/delta agonist.** *Mol Pharmacol* 2010, **77**(2):171–184.
27. Kaddatz K, Adhikary T, Finkernagel F, Meissner W, Muller-Brusselbach S, Muller R: **Transcriptional profiling identifies functional interactions of TGF beta and PPAR beta/delta signaling: synergistic induction of ANGPTL4 transcription.** *J Biol Chem* 2010, **285**(38):29469–29479.
28. InSilico DB Genomic Datasets Hub. <http://insilico.ulb.ac.be/>.
29. Gaussian Mixture Modeling. <http://www.astro.lsa.umich.edu/~ognedin/gmm>.
30. Sudol M, Hunter T: **NeW wrinkles for an old domain.** *Cell* 2000, **103**(7):1001–1004.
31. Selvamurugan N, Kwok S, Partridge NC: **Smad3 interacts with JunB and Cbfa1/Runx2 for transforming growth factor-beta1-stimulated collagenase-3 expression in human breast cancer cells.** *J Biol Chem* 2004, **279**(26):27764–27773.
32. Aqeilan RI, Hassan MQ, de Bruin A, Hagan JP, Volinia S, Palumbo T, Hussain S, Lee SH, Gaur T, Stein GS, *et al*: **The WWOX tumor suppressor is essential for postnatal survival and normal bone metabolism.** *J Biol Chem* 2008, **283**(31):21629–21639.
33. Padua D, Zhang XH, Wang Q, Nadal C, Gerald WL, Gomis RR, Massague J: **TGFbeta primes breast tumors for lung metastasis seeding through angiopoietin-like 4.** *Cell* 2008, **133**(1):66–77.
34. Zhu P, Tan MJ, Huang RL, Tan CK, Chong HC, Pal M, Lam CR, Boukamp P, Pan JY, Tan SH, *et al*: **Angiopoietin-like 4 protein elevates the pro-survival intracellular O2(-):H2O2 ratio and confers anoikis resistance to tumors.** *Cancer Cell* 2011, **19**(3):401–415.
35. Aqeilan RI, Donati V, Gaudio E, Nicoloso MS, Sundvall M, Korhonen A, Lundin J, Isola J, Sudol M, Joensuu H, *et al*: **Association of Wwox with ErbB4 in breast cancer.** *Cancer Res* 2007, **67**(19):9330–9336.
36. Guler G, Huebner K, Himmertoglu C, Jimenez RE, Costinean S, Volinia S, Pilarski RT, Hayran M, Shapiro CL: **Fragile histidine triad protein, WW domain-containing oxidoreductase protein Wwox, and activator protein 2gamma expression levels correlate with basal phenotype in breast cancer.** *Cancer* 2009, **115**(4):899–908.
37. Bos PD, Zhang XH, Nadal C, Shu W, Gomis RR, Nguyen DX, Minn AJ, van de Vijver MJ, Gerald WL, Foekens JA, *et al*: **Genes that mediate breast cancer metastasis to the brain.** *Nature* 2009, **459**(7249):1005–1009.
38. Janicke F, Schmitt M, Pache L, Ulm K, Harbeck N, Hofler H, Graeff H: **Urokinase (uPA) and its inhibitor PAI-1 are strong and independent prognostic factors in node-negative breast cancer.** *Breast Cancer Res Treat* 1993, **24**(3):195–208.
39. Silberstein GB, Daniel CW: **Reversible inhibition of mammary gland growth by transforming growth factor-beta.** *Science* 1987, **237**(4812):291–293.
40. Barcellos-Hoff MH, Akhurst RJ: **Transforming growth factor-beta in breast cancer: too much, too late.** *Breast Cancer Res* 2009, **11**(1):202.
41. Moses H, Barcellos-Hoff MH: **TGF-beta biology in mammary development and breast cancer.** *Cold Spring Harb Perspect Biol* 2011, **3**(1):a003277.
42. Padua D, Massague J: **Roles of TGFbeta in metastasis.** *Cell Res* 2009, **19**(1):89–102.
43. Massague J: **TGFbeta signalling in context.** *Nat Rev Mol Cell Biol* 2012, **13**(10):616–630.
44. Chen CR, Kang Y, Siegel PM, Massague J: **E2F4/5 and p107 as Smad cofactors linking the TGFbeta receptor to c-myc repression.** *Cell* 2002, **110**(1):19–32.
45. Feng XH, Liang YY, Liang M, Zhai W, Lin X: **Direct interaction of c-Myc with Smad2 and Smad3 to inhibit TGF-beta-mediated induction of the CDK inhibitor p15(Ink4B).** *Mol Cell* 2002, **9**(1):133–143.
46. Pardali K, Kurisaki A, Moren A, ten Dijke P, Kardassis D, Moustakas A: **Role of Smad proteins and transcription factor Sp1 in p21(Waf1/Cip1) regulation by transforming growth factor-beta.** *J Biol Chem* 2000, **275**(38):29244–29256.
47. Aragon E, Goerner N, Zaromytidou AI, Xi Q, Escobedo A, Massague J, Macias MJ: **A Smad action turnover switch operated by WW domain readers of a phosphoserine code.** *Genes Dev* 2011, **25**(12):1275–1288.
48. Sudol M: **WW domains in the heart of Smad regulation.** *Structure* 2012, **20**(10):1619–1620.
49. Salah Z, Aqeilan R, Huebner K: **WWOX gene and gene product: tumor suppression through specific protein interactions.** *Future Oncol* 2010, **6**(2):249–259.
50. Chimgo NO, Baniwal SK, Little GH, Chen YB, Kahn M, Tripathy D, Borok Z, Frenkel B: **Regulation of breast cancer metastasis by Runx2 and estrogen signaling: the role of SNAI2.** *Breast Cancer Res* 2011, **13**(6):R127.

doi:10.1186/1471-2407-13-593

**Cite this article as:** Ferguson *et al*: The cancer gene WWOX behaves as an inhibitor of SMAD3 transcriptional activity via direct binding. *BMC Cancer* 2013 **13**:593.

**Submit your next manuscript to BioMed Central and take full advantage of:**

- Convenient online submission
- Thorough peer review
- No space constraints or color figure charges
- Immediate publication on acceptance
- Inclusion in PubMed, CAS, Scopus and Google Scholar
- Research which is freely available for redistribution

Submit your manuscript at  
[www.biomedcentral.com/submit](http://www.biomedcentral.com/submit)

