

Full Activation of *Enterococcus faecalis* Gelatinase by a C-Terminal Proteolytic Cleavage^{∇†‡}

Maria Florencia Del Papa,^{1§¶} Lynn E. Hancock,^{1,2§} Vinai C. Thomas,² and Marta Perego^{1*}

Division of Cellular Biology, Department of Molecular and Experimental Medicine, The Scripps Research Institute, La Jolla, California 92037,¹ and Division of Biology, Kansas State University, Manhattan, Kansas 66506-4901²

Received 13 August 2007/Accepted 27 September 2007

Enterococci account for nearly 10% of all nosocomial infections and constitute a significant treatment challenge due to their multidrug resistance properties. One of the well-studied virulence factors of *Enterococcus faecalis* is a secreted bacterial protease, termed gelatinase, which has been shown to contribute to the process of biofilm formation. Gelatinase belongs to the M4 family of bacterial zinc metalloendopeptidases, typified by thermolysin. Gelatinase is synthesized as a proenzyme consisting of a signal sequence, a putative propeptide, and then the mature enzyme. We determined that the molecular mass of the mature protein isolated from culture supernatant was 33,030 Da, which differed from the predicted molecular mass, 34,570 Da, by over 1,500 Da. Using N-terminal sequencing, we confirmed that the mature protein begins at the previously identified sequence VGSEV, thus suggesting that the 1,500-Da molecular mass difference resulted from a C-terminal processing event. By using mutants with site-directed mutations within a predicted C-terminal processing site and mutants with C-terminal deletions fused to a hexahistidine tag, we determined that the processing site is likely to be between residues D304 and I305 and that it requires the Q306 residue. The results suggest that the *E. faecalis* gelatinase requires C-terminal processing for full activation of protease activity, making it a unique enzyme among the members of the M4 family of proteases of gram-positive bacteria.

Enterococcus faecalis is a gram-positive coccus that usually occurs in pairs or short chains and is commonly found as part of the resident flora in the mammalian intestinal tract (37). In contrast to the beneficial role that enterococci play in intestinal homeostasis, these organisms are becoming increasingly important to human health as leading causes of nosocomial infections. These infections include urinary tract and abdominal infections, bacteremia, endocarditis, and wound infections (1, 9, 29). *E. faecalis* is ubiquitous in the environment and can withstand high salt concentrations and wide pH and temperature ranges. Enterococci are also resistant to desiccation and temperatures up to 60°C. One of the most important public health aspects of enterococci is their increasingly wide range of antibiotic resistance (14). Multidrug resistance is common among clinical isolates, leaving few therapeutic options for treating enterococcal infections.

Some strains of *E. faecalis* can form biofilms, which may increase their ability to colonize patients and persist at infection sites (22). Biofilms are bacterial communities growing as surface-attached aggregates encased in an exopolymer matrix.

Biofilms are generally thought to be more resistant to antibiotics than the corresponding free-living bacteria, which compounds the problem of antimicrobial resistance. Moreover, recent estimates suggest that over 65% of hospital-acquired infections stem from the ability of the infecting organism to produce biofilms (17).

As biofilm formation is thought to be an environmentally responsive process, we recently examined the contributions of two-component signal transduction networks to biofilm formation by *E. faecalis* V583 (11). We found that of the 17 two-component response regulator mutants tested, only the *fsrA* response regulator mutant was significantly attenuated in biofilm formation. FsrA is part of a signal transduction system that is responsive to the accumulation of an 11-amino-acid peptide lactone, termed gelatinase biosynthesis-activating pheromone (24). This peptide is encoded by the *fsrD* gene and is thought to be proteolytically processed from the FsrD protein and exported by the *fsrB* gene product (25), and its presence in a culture is sensed by the FsrC histidine kinase. Gelatinase biosynthesis-activating pheromone sensing by the FsrC sensor kinase results in activation of the FsrA response regulator transcription factor by a phosphoryl group. The phosphorylated form of FsrA is believed to activate expression of two cotranscribed protease genes, *gelE* and *sprE* (28). Additionally, the FsrABC system was shown by microarray analysis to affect a variety of other genes, some of which potentially are involved in virulence and some of which are involved in metabolic pathways (2). As the GelE and SprE proteases are Fsr-regulated proteins, we explored the contribution of the *E. faecalis* proteases gelatinase and serine protease to biofilm formation (12). We found that the biofilm deficiency of an *fsrA* mutant was due to an inability to make gelatinase. Complementation

* Corresponding author. Mailing address: Division of Cellular Biology, Mail Code MEM-116, Department of Molecular and Experimental Medicine, The Scripps Research Institute, 10550 North Torrey Pines Road, La Jolla, CA 92037. Phone: (858) 784-7912. Fax: (858) 784-7966. E-mail: mperego@scripps.edu.

† Supplemental material for this article may be found at <http://jlb.asm.org/>.

‡ Manuscript 19055 from The Scripps Research Institute.

§ M.F.D.P. and L.E.H. contributed equally to this study.

¶ Present address: Instituto de Bioquímica y Biología Molecular, Facultad de Ciencias Exactas, Universidad Nacional de La Plata, Calles 47 y 115 (1900), La Plata, BsAS, Argentina.

[∇] Published ahead of print on 5 October 2007.

TABLE 1. *E. faecalis* strains used in this study

Strain	Relevant genotype	Relevant phenotype	Origin
V583	Parental	GelE ⁺	Clinical isolate
FA2-2	<i>fsrC</i>	GelE ⁻	Lab strain
EF 129	<i>fsrC aphA-3</i> promoter	GelE ⁻ Spc ^r	pML28 → FA2-2
EF 130	<i>fsrC aphA-3</i> promoter- <i>gelE</i>	GelE ⁺⁺ Spc ^r	pML29 → FA2-2
EF 131	<i>fsrC aphA-3</i> promoter- <i>gelE</i> (His tag)	GelE ⁺⁺ Spc ^r	pML33 → FA2-2
EF 132	<i>fsrC aphA-3</i> promoter- <i>gelE</i> (C-terminal 14 amino acids)	GelE ⁺⁺ Spc ^r	pML34 → FA2-2
EF 133	<i>fsrC aphA-3</i> promoter- <i>gelE</i> (C-terminal 14 amino acids, His tag)	GelE ⁺⁺ Spc ^r	pML37 → FA2-2
EF 134	<i>fsrC aphA-3</i> promoter- <i>gelE</i> (C-terminal 13 amino acids, His tag)	GelE ⁺⁺ Spc ^r	pML42 → FA2-2
EF 135	<i>fsrC aphA-3</i> promoter- <i>gelE</i> (C-terminal 13 amino acids, His tag)	GelE ⁺⁺ Spc ^r	pML43 → FA2-2
EF 136	<i>fsrC aphA-3</i> promoter- <i>gelE</i> (E303P)	GelE ⁺⁺ Spc ^r	pML38 → FA2-2
EF 137	<i>fsrC aphA-3</i> promoter- <i>gelE</i> (D304P)	GelE ⁺⁺ Spc ^r	pML39 → FA2-2
EF 138	<i>fsrC aphA-3</i> promoter- <i>gelE</i> (I305P)	GelE ⁺⁺ Spc ^r	pML40 → FA2-2
EF 139	<i>fsrC aphA-3</i> promoter- <i>gelE</i> (Q306P)	GelE ⁺ Spc ^r	pML41 → FA2-2
EF 140	<i>fsrC aphA-3</i> promoter- <i>gelE</i> (E137Q)	GelE ⁻ Spc ^r	pML44 → FA2-2
EF 141	<i>fsrC aphA-3</i> promoter- <i>gelE</i> (E137Q) (His tag)	GelE ⁻ Spc ^r	pML45 → FA2-2

of the *fsrA* mutant by gelatinase expressed from an *fsr*-independent promoter restored biofilm formation. Addition of purified gelatinase also restored biofilm formation to *fsr*-defective strains, suggesting a critical, but as-yet-unknown, role for gelatinase in biofilm formation by *E. faecalis*. The involvement of GelE in biofilm formation was also reported by Kristich et al. (16).

GelE was originally characterized by Makinen et al. (18) as an extracellular Zn metalloprotease with activity against a number of substrates, including the insulin B chain, azo dye-impregnated collagen (azocoll), and the pheromones and inhibitor peptides involved in conjugative plasmid transfer in *E. faecalis*. GelE was also shown to function in clearing the bacterial cell surface of misfold proteins and in activating an autolysin (41). Gelatinase is synthesized as a 509-amino-acid prepolypeptide which is subject to cleavage of the 192 amino acids at the amino-terminal end comprising the presequence or signal sequence and the prosequence.

In this study, an apparent difference between the predicted and actual molecular masses of the purified gelatinase revealed that gelatinase undergoes C-terminal proteolytic processing for full maturation. The role of this processing in gelatinase activity was examined.

MATERIALS AND METHODS

Bacterial strains, plasmids, and growth conditions. *E. faecalis* strains and plasmids used in this study are listed in Tables 1 and 2. Oligonucleotide primers used for plasmid construction are shown in Table S1 in the supplemental material. Plasmid pML28 was constructed from the vector pAT28 (39) by inserting a 369-bp EcoRI-BamHI fragment carrying the promoter of the *aphA-3* kanamycin resistance gene (40). The *gelE* coding sequence and its ribosome binding site were then cloned in pML28 as a BamHI fragment to obtain pML29 (12). For construction of pML33, the mature *gelE* coding sequence was first cloned as an NdeI-XhoI fragment in the pET21 expression vector (Novagen) using oligonucleotide primers MGeNT-NdeI and MGeCT-XhoI, yielding plasmid pML52, which encoded a GelE protein with a six-His tag extension. A fragment of this plasmid was generated by PCR amplification using oligonucleotide primers MGeNT-Nde and pET20downPst (the latter primer hybridizes to the pET21 vector in a region downstream of the six histidine codons). This fragment was digested with NcoI, which naturally occurs in the *gelE* sequence, and cloned in the pML29 vector digested with NcoI and Sall (the latter enzyme blunted with Klenow polymerase) to replace the wild-type 3' end of the gene with the histidine tag-modified version. Plasmid pML34 was constructed by cloning the PCR amplification product obtained with oligonucleotide primers GelE5' and GeECT-14BamHI, digested with BamHI, in the BamHI site of plasmid pML28. Plasmid pML37 was derived from pML29 in which the 3' end of the wild-type gene was replaced by the 3' end of a *gelE* gene missing the last 14 amino acids but fused to six histidine codons. This construct was first generated in the pET21 expression vector (Novagen) via BamHI-XhoI cloning of a PCR fragment amplified with oligonucleotides MGeINT-NdeI and GeECT-14XhoI, yielding plasmid pML56. Plasmid pML56 was used as a template for PCR amplification with

TABLE 2. Plasmids used in this study

Vector	Description	Predicted gelatinase C-terminal sequence
pML28 ^a	Shuttle vector with <i>aphA-3</i> promoter	
pML29 ^b	GelE	GAKEDIQVNPSESVLVNE
pML33	GelE plus His ₆ tag	GAKEDIQVNPSESVLVNELEHHHHHHH
pML34	GelE without C-terminal 14 amino acids	GAKED
pML37	GelE without C-terminal 14 amino acids plus His tag	GAKEDLEHHHHHHH
pML42	GelE without C-terminal 13 amino acids plus His tag	GAKEDILEHHHHHHH
pML43	GelE without C-terminal 12 amino acids plus His tag	GAKEDIQLEHHHHHHH
pML38	GelE with glutamic acid-to-proline substitution at position 303	GAKPDIQVNPSESVLVNE
pML39	GelE with aspartic acid-to-proline substitution at position 304	GAKEIQVNPSESVLVNE
pML40	GelE with isoleucine-to-proline substitution at position 305	GAKEDPQVNPSESVLVNE
pML41	GelE with glutamine-to-proline substitution at position 306	GAKEDIPVNPSESVLVNE
pML44	GelE with glutamate at position 137 mutated to Gln	GAKEDIQVNPSESVLVNE
pML45	GelE with glutamate at position 137 mutated to Gln plus His ₆ tag	GAKEDIQVNPSESVLVNELEHHHHHHH

^a Derivative of pAT28 (39) carrying the *aphA-3* promoter as a 369-bp EcoRI-BamHI fragment (12).

^b See reference 12.

oligonucleotide primers NGelENT-NdeI and pET20downPst. The resulting fragment was digested with NcoI and ligated to pML29 digested with XbaI (treated with Klenow polymerase to obtain a blunt end) and NcoI. Plasmids pML42 and pML43 were constructed by cloning PCR-amplified fragments obtained with oligonucleotide primers MGeINT-NdeI and GeIEIHis2 and with oligonucleotide primers MGeINT-NdeI and GeIEQHis2, respectively, digested with NcoI and XbaI in similarly digested pML29. PCR products were obtained by amplification of *E. faecalis* V583 genomic DNA.

Strains were cultured in Todd-Hewitt broth (THB) or M17 medium (Difco Laboratories). *Escherichia coli* XL10 Gold (Stratagene) was used for plasmid construction and propagation. Strains were cultivated in Luria-Bertani broth. The antibiotics used for selection in *E. coli* and *E. faecalis* were spectinomycin (150 and 750 µg/ml, respectively) and tetracycline (15 µg/ml). Screening for gelatinase production was carried out on THB agar plates containing 1.5% skim milk. Electroporation was carried out as described previously (5).

Site-directed mutagenesis. Plasmid pML29 was subjected to site-directed mutagenesis using a QuickChange II site-directed mutagenesis kit (Stratagene, La Jolla, CA) and mutagenic primers to replace residues surrounding the putative C-terminal processing site with proline or the active site E137 with glutamine (see Table S1 in the supplemental material). Plasmid pML33 was used as template to generate pML45.

Gelatinase purification. For all GeIE proteins, most of the purification steps were performed at 4°C; the only exception was hydrophobic interaction chromatography, which was performed at room temperature. The procedure used was the procedure described by Hancock and Perego (12).

Protein determination, electrophoretic techniques, and Western blotting. The protein concentration was determined with a bicinchoninic acid reagent kit (Pierce), using bovine serum albumin as a standard. Enzyme purification was monitored by sodium dodecyl sulfate (SDS)-polyacrylamide gel electrophoresis (PAGE) on a 12% polyacrylamide separating gel. Concentrated (20×) culture supernatants from overnight cultures were run on SDS-PAGE gels and stained with Coomassie blue or transferred to a polyvinylidene difluoride membrane. GeIE was detected with anti-His (C-terminal) monoclonal antibody (Novagen) using an ECL Western blotting detection kit (Amersham Biosciences).

Protease activity assay. Azocoll (18) was suspended at a final concentration of 5 mg/ml in the assay buffer (50 mM Tris [pH 7.8], 1 mM CaCl₂) and incubated for 2 h at 37°C with vigorous shaking. The solution was filtered (Whatman 1MM paper), and the precipitate was resuspended immediately in the same volume of fresh buffer. Stirring was rapid enough to obtain what appeared to be a uniform suspension. Tubes (diameter, 13 mm) were prewarmed at 37°C for 15 min before the reaction was initiated by addition of enzyme. Assays were stopped by immersing tubes in an ice-water bath. Chilled tubes were then centrifuged, and the optical densities at 550 nm of supernatant fractions that were diluted 1:2 were measured. Data were obtained for every time point in triplicate.

Molecular mass determination. The molecular masses of the native protease and mutants of this protease were determined using matrix-assisted laser desorption/ionization—time of flight mass spectrometry. The analysis was performed at the Mass Spectroscopy Core Facility at The Scripps Research Institute.

Biofilm formation. Biofilm formation on polystyrene was quantified as previously described (38). Briefly, *E. faecalis* strains were grown overnight at 37°C in M17 medium supplemented with 0.5% lactose and spectinomycin (500 µg/ml) when appropriate. Each culture was diluted 1:100 in M17 medium, and 200 µl of the resulting cell suspension was used to inoculate sterile 96-well flat-bottom polystyrene microtiter plates. After incubation for 24 h at 37°C, wells were gently washed three times with 200 µl of phosphate-buffered saline, dried in the inverted position, and stained with 1% crystal violet for 15 min. The wells were rinsed again, and the crystal violet was solubilized in 200 µl ethanol-acetone (80:20, vol/vol). The optical density at 550 nm was determined using a microplate reader. Each assay was performed in triplicate and repeated three times.

Autolysis assay. *E. faecalis* FA2-2 strains containing pML28, pML29, pML34, and pML41 were grown overnight at 37°C in 2.5 ml THB containing 600 µg/ml of spectinomycin. Twenty-five microliters of each overnight culture was inoculated into 2.5 ml SM17 medium containing spectinomycin and 3% glycine (the appropriate final concentration of glycine in the medium was obtained using a filter-sterilized 25% glycine stock solution) and grown overnight at 37°C. Then 1.5 ml of the overnight culture was centrifuged at 13,000 rpm for 3 min. The supernatants were discarded, and the pellets were washed three times in ice-cold sterile distilled water. After the third wash, the pellets were resuspended in 10 mM sodium phosphate buffer (pH 6.8). Two hundred microliters of the suspended cells was dispensed into a 96-well plate, and the optical density at 600 nm at 37°C was determined for 9 h at 30-min intervals. A statistical analysis (Student's *t* test) was carried out with the SAS program.

RESULTS

Molecular mass of mature gelatinase. The *E. faecalis* protease gelatinase belongs to the M4 family of bacterial zinc metallopeptidases typified by thermolysin of *Bacillus thermo- proteolyticus* (27) and aureolysin of *Staphylococcus aureus* (30). An amino acid sequence alignment of the mature portions of thermolysin, aureolysin, and gelatinase (Fig. 1) revealed that gelatinase had an 18-amino-acid extension at the carboxy-terminal end. Some M4 family members from bacteria belonging to the family *Vibrionaceae* require processing at the carboxy terminus, in addition to two processing events at the amino terminus, to become fully active (15, 23). For this reason we investigated the possibility that the enterococcal gelatinase undergoes a carboxy-terminal processing event by determining the molecular weight of the mature enzyme purified from the culture supernatant. As shown in Fig. S1 in the supplemental material, mass spectrometry analysis of purified gelatinase revealed a molecular mass of 33,030 Da, which was 1,540 Da less than the predicted molecular mass of the protein (34,570 Da) based on its deduced amino acid sequence. N-terminal sequencing revealed that the purified, mature protein began with the previously determined sequence “VGSEV” (36) (data not shown), suggesting that the molecular mass difference had to result from a C-terminal processing event(s) that, based on the expected molecular masses of proteins lacking the last 12 to 15 amino acids, is consistent with cleavage of the last 14 amino acids from the carboxy-terminal end (Fig. 2).

Gelatinase is processed at the C-terminal end. In order to determine the site of processing of the gelatinase enzyme, we expressed the wild-type protein and C-terminal deletion mutants from an FsrA-independent promoter (*aphA-3* [39]) on a replicative vector in the FA2-2 strain, which is gelatinase deficient due to the absence of a functional *fsr* system (12) (Table 2).

Complementation of the gelatinase-deficient phenotype was first tested on THB-milk agar plates (data not shown) in order to ensure that an active gelatinase was expressed. Then 20×-concentrated culture supernatants were analyzed for the presence of gelatinase protein by SDS-PAGE and Western blotting. As shown in Fig. 3A, while strain FA2-2 carrying the pML28 vector, which contained only the *aphA-3* promoter, did not produce gelatinase, the strain carrying plasmid pML29, which expressed the wild-type *gelE* gene, secreted a protein with a molecular mass of approximately 34 kDa. A protein of similar size was produced by strains carrying plasmids pML33 and pML34, which expressed a wild-type GeIE protein with a six-histidine extension at the C-terminal end and a GeIE protein lacking the C-terminal 14 amino acids, respectively. The culture supernatant of the strain carrying plasmid pML37 (expressing a GeIE protein lacking the C-terminal 14 amino acids but with a six-His tag fused to the D304 residue via a Leu-Glu linker) produced a protein band that was the same size as the band observed in the samples described above and an additional band at a slightly higher molecular weight. A similar band pattern was obtained with the culture supernatants of the strains carrying plasmids pML42 and pML43, which expressed GeIE fused to the six-His tag at the I305 and Q306 residues, respectively. Notably, the concentration of the higher-molecular-weight band relative to the lower-molecular-weight band

```

Aureolysin    ---AAATGTGKRGVLDGDKDININSIDGGFSLEDLTHQGKLSAYNFNDQGTG-QATLITNED 56
Thermolysin  ITGTSTVGVGRGVLGDQKNIINT-TYSTYYLQDNTRGDGIFTYDAKYRITLFGSLWADAD 59
Gelatinase    ---VGSEVTLKNSFQVTFNVPVEKSNTEGIALHGTDNTG---VYHAVVDGKNNYSIIQAPS 54
      . . . . . : : : . . . . . * * * . . . . . * . . . . .

Aureolysin    ENFVKDDQKAGVDANYAKQTYDYYKNTFGRESYDNHGSPIVSLTHVNHYGGQDNRNAA 116
Thermolysin  NQFFASYDAPAVDAHYYAGVTDYKQVHNRSLSYDGNNAAIRSSVHYSQG-----YNNAF 114
Gelatinase    ---LATLNQNAIDAYTHGKFKVTKYYEDHFQRHSIDDRGMPILSVVDEQHP---DAYDNAF 108
      . . . . . : : : * * * . . . . . * * * . . . . . * * * . . . . . * * * . . . . .

                                HEXXH          Y          E

Aureolysin    WIGDKMIYGGDGRITFNLSGANDVVAHELTHGVTQETANLEYKQSGALNESFSDFVGY 176
Thermolysin  WNGSEMIVYGDGQGFIFLSGGIDVVAHELTHAVTDYTAGLIYQNESSGAINESAIQDFGT 174
Gelatinase    WDGKAMRYGETSTPTGKTYASSLDDVVGHEMTHGVTETHTAGLEYLQSGALNESYSDLMGY 168
      * * . * * * : . * . . . . * * * . * * * * * * * * * * * * * * * * * * * * * * * * * *

Aureolysin    FVD-----DEDFLMGEDVYTPGKEGDALRSMSNPEQFGQPSRMKDYVYTEK-----DN 224
Thermolysin  LVEFYANKNPDWEIGEDVYTPGI SGDSLRSMSDPAKYGDPDRYSKRYTGTQ-----DN 227
Gelatinase    IISG-----ASNPEIGADTQSVDRKRG-IRNLQTPSKHGQPE TMAQYDDRARYKGTPTYDQ 223
      . . . . . : * * * . . . . . : . . . . . * * * * * . . . . .

                                H

Aureolysin    GGVHTNSGIFNKAAYNVIQ-----AIGKSKSEQIYYRALTEYLTNSNFKDCKDA 274
Thermolysin  GGVHINSGINKAAYLISQGGTHYGVSVWGI GRDKLGI FYRALTQYLTPTSNFSQLRAA 287
Gelatinase    GSVHNSGII NRIGYTI IQN-----LGIEKAQTIFYSSLVNYLTPKAQFSDARDA 273
      * * * * * * * * * * : : : * . . . . . * * * . . . . . * * * . . . . . * * * . . . . .

Aureolysin    IYQAARDLY--DEQTAEQVYLANNEVGVE----- 301
Thermolysin  AVQSATDLYGSTSQEVASVKQAFDAVGVK----- 316
Gelatinase    MLAARKVQYG--DEAASVVSAAFNSAGIGAKEDIQVNPSESVLVNE 318
      . . . . . * * * . . . . . * * * . . . . .

```

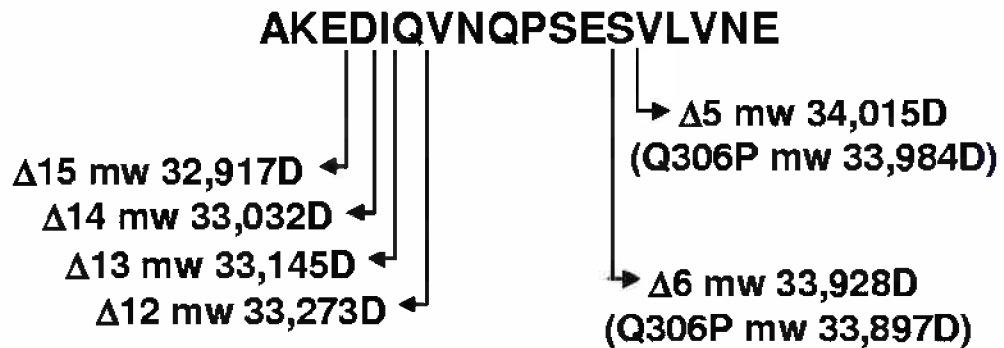


FIG. 1. Amino acid sequence alignment of members of the M4 family of bacterial metalloproteases. The amino acid sequences of aureolysin of *S. aureus*, thermolysin of *B. thermoproteolyticus*, and gelatinase of *E. faecalis* were aligned using the ClustalW program. The active site residues are indicated by the gray boxes. Symbols: asterisks, identical residues in all sequences; colons, conserved substitutions; periods, semiconserved substitutions. The sequence of the C-terminal 18 amino acids is shown at the bottom along with the calculated molecular masses of GelE mutant proteins lacking the last 5 ($\Delta 5$), 6 ($\Delta 6$), 12 ($\Delta 12$), 13 ($\Delta 13$), 14 ($\Delta 14$), and 15 ($\Delta 15$) amino acids. The predicted molecular masses (mw) were obtained with the ExPASy pI- M_w tool. The predicted molecular masses of the GelE Q306P mutant proteins lacking the last five or six amino acids are indicated in parentheses. D, daltons.

decreased in the order pML37 > pML42 > pML43. Analysis of the same supernatants by Western blotting using an anti-C-terminal His tag antibody revealed that only the truncated GelE proteins expressed by plasmids pML37, pML42, and pML43 maintained the histidine tag fused to the D304, I305, and Q306 residues, respectively (Fig. 3B). The intensities of the bands detected corresponded to the intensities of the higher-molecular-weight bands observed in the Coomassie blue-stained gel shown in Fig. 3A. (i.e., pML37 > pML42 > pML43). Since no His tag was detected in the supernatant of the strain expressing the GelE wild-type protein with the histidine tag fused to the last residue (E318; pML33), these results indicated that maturation of GelE occurred via cleavage at the C-terminal end and that this process was progressively delayed by deletion of the last 12 to 14 amino acids. Never-

theless, incubation of the same proteins for 12 h at 37°C resulted in the presence of only one form of GelE, corresponding to the mature form, in all preparations (Fig. 3C). This indicated that maturation could eventually occur even when the C-terminal 14 amino acids were replaced by the L-E-H₆ amino acid sequence.

Proline substitution at Q306 affects gelatinase activity. Mass spectrometry determination of the molecular mass of mature wild-type gelatinase from culture supernatant revealed a discrepancy of approximately 1,500 Da with the predicted value (Fig. 2). Because the predicted molecular mass of the last 14 amino acids at the carboxy-terminal end of gelatinase is 1,556 Da (Fig. 2), we investigated whether any of the residues at positions 16 (E303), 15 (D304), 14 (I305), and 13 (Q306) from the C-terminal end had a critical role in the processing of the

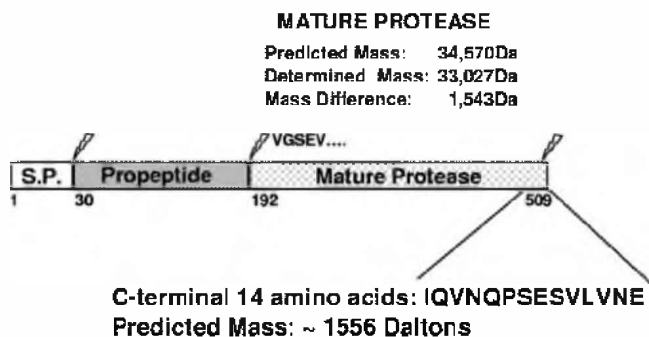


FIG. 2. Schematic representation of gelatinase proteolytic processing. The *gelE* gene encodes a 509-amino-acid protein with a probable signal peptide (S.P.) that is 29 amino acids long. The propeptide sequence extends from residue 30 to residue 191, and the mature gelatinase starts at residue V192. The predicted masses of the mature protein and C-terminal peptide were determined with the ExPASy pI-M_w tool. The molecular weight of the mature protein purified from culture supernatants was determined by mass spectrometry.

protease. These four residues were individually changed to proline by site-directed mutagenesis, and the resulting proteins were purified from culture supernatants of strain FA2-2 together with the wild-type form of GelE. SDS-PAGE analysis of 1 μg of each protein revealed that while the GelE E303P, D304P, and I305P mutant proteins had an electrophoretic mobility equal to that of the wild-type protease, the mobility of the

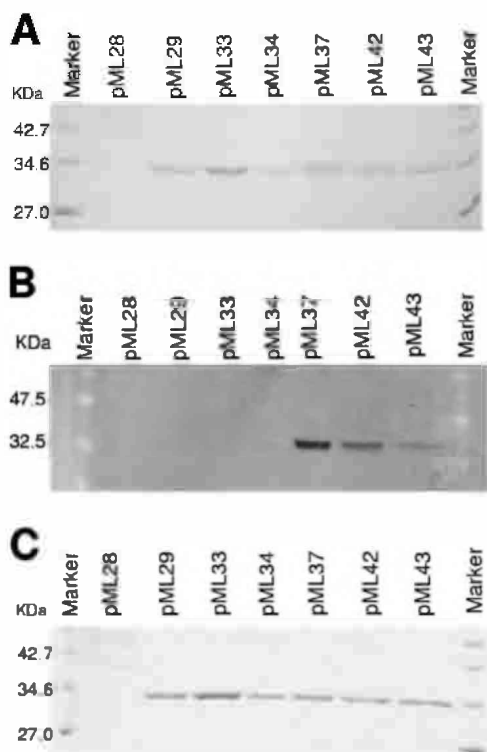


FIG. 3. Analysis of the protein profiles for the culture supernatants of GelE derivatives. The supernatants were concentrated 20-fold and loaded on a 12% polyacrylamide gel for Coomassie blue staining (A) or for Western blot analysis using anti-C-terminal His tag antibody (B). (C) Protein profile of the same supernatants after overnight incubation at 37°C.

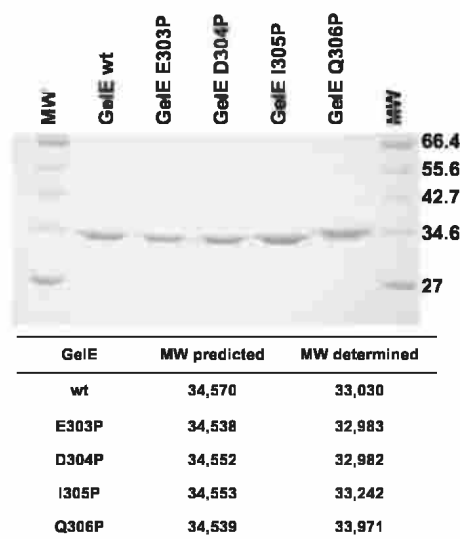


FIG. 4. Analysis of the electrophoretic mobility of GelE proline substitution mutant proteins. Gelatinases purified from culture supernatants of strain FA2-2 expressing the wild-type protein (GelE wt) and the E303P, D304P, I305P, and Q306P mutant proteins were run on a 12% SDS-PAGE gel and stained with Coomassie blue. The broad range protein marker (New England Biolabs) (lanes MW) was included in the analysis. The molecular weights of the five proteins were determined by matrix-assisted laser desorption ionization—time of flight mass spectrometry. MW, molecular weight.

Q306P mutant protein was slightly retarded (Fig. 4). A mass spectrometry analysis carried out with the five proteins indicated that the E303P and D304P proteins had molecular masses in the range of the molecular mass obtained for the wild-type protein, suggesting that these substitutions did not affect the processing of the C-terminal end. The I305P mutant protein seemed to be approximately one amino acid larger than the wild-type GelE, while the molecular weight of the Q306P protein indicated that five or six additional amino acids were present compared to the wild-type protein (Fig. 4).

These results suggested that a proline at position 305 may have a role in positioning the cleavage site but that Q306 is the most critical residue for processing of the 14 C-terminal amino acids. Replacement of Q306 with proline in fact resulted in an alternative cleavage event that most likely deleted the C-terminal five amino acids.

Activity of GelE mutants with synthetic substrates and in biofilm formation. In order to compare the activities of the four site-specific mutants of GelE (E303P, D304P, I305P, and Q306P), the purified proteins were assayed in three independent experiments using azocoll as a substrate. All proteinases were still able to degrade azocoll, but the Q306P mutant protein was consistently less active than the other proteins (Fig. 5), showing a 30% reduction in protease activity. The results suggested that correct processing of the last 14 amino acids at the C-terminal end of GelE is necessary for full activity of the protein.

The previously described role of gelatinase in biofilm formation prompted us to test whether the proline substitutions had any effect on biofilm formation. As shown in Fig. S2 in the supplemental material, none of the mutant proteins affected

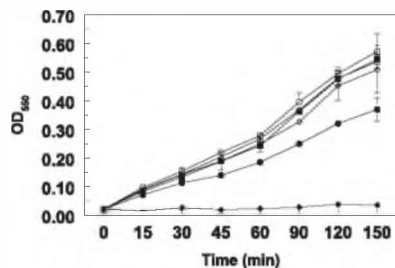


FIG. 5. Hydrolysis of azocoll by GeIE and site-specific mutants as a function of time measured by the absorbance of released azocoll dye. The assay was carried out with FA2-2 strains carrying plasmids pML28 (vector alone) (◆), pML29 (GeIE wild type) (■), pML38 (GeIE E303P) (△), pML39 (GeIE D304P) (○), pML40 (GeIE I305P) (⊙), and pML41 (GeIE Q306P) (●). The data are the averages of two independent experiments; the error bars indicate the standard deviations. Each data point is the average of triplicate measurements. OD₅₅₀, optical density at 550 nm.

the ability of strain FA2-2 to form biofilms, but the sensitivity of the assay may not have been high enough to detect the small enzymatic differences between these proteins.

GeIE Q306P mutation affects cell autolysis. GeIE has been shown to be involved in the maturation of the *E. faecalis* muramidase-1 autolysin in vitro (33), and GeIE-producing strains have been shown to have increased autolysis (41). For these reasons we investigated whether processing of the C-terminal end of gelatinase had any effect on cell autolysis. Strains derived from FA2-2 carrying plasmid pML28 (vector), pML29 (GeIE wild type), pML34 (GeIE-CT14), or pML41 (GeIE Q306P) were subjected to an autolysis assay as described in Materials and Methods. The results (Fig. 6) consistently and reproducibly indicated that the strain expressing the GeIE Q306P mutant protein had a slightly higher rate of autolysis than the strain expressing the GeIE wild-type protein ($P < 0.05$). Notably, the strain expressing the GeIE protein lacking the last 14 amino acids showed a slightly lower, although not statistically significant, level of autolysis than the wild-type protein-expressing strain ($P < 0.36$). Consistent with the results reported by Waters et al. (41), the strains expressing GeIE had a higher autocatalytic rate than the control strain not expressing the enzyme.

These results suggest that although the Q306P mutation reduced the protease activity of GeIE, the inability to process the C-terminal end increased the ability of the enzyme to access or activate the target autolysin.

Active site mutation affects the GeIE N- and C-terminal processes. As a member of the M4 family of zinc metalloproteases, gelatinase possesses a conserved catalytic domain typified by the primary-sequence HEXXH motif responsible for coordinating zinc in the active site (Fig. 1) (13). In order to investigate the role of GeIE activity in its maturation, the glutamic acid residue at position 137 in the active site was mutated to glutamine and the protein was expressed in strain FA2-2 from the *aphA-3* promoter of plasmid pML28 as described above. The resulting construct, designated pML44, was also modified to express an E137Q GeIE mutant protein with six His residues at the C-terminal end (plasmid pML45). The concentrated supernatants of cultures expressing these proteins were run on an SDS-PAGE gel and evaluated by Western

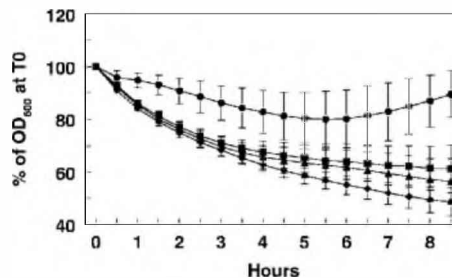


FIG. 6. Autolysis assay with FA2-2 strains expressing gelatinase. The autolysis assay was carried out with FA2-2 strains carrying plasmids pML28 (vector alone) (●), pML29 (GeIE wild type) (▲), pML34 (GeIE-CT14aa) (■), and pML41 (GeIE Q306P) (◆). Samples were analyzed at 30-min intervals as described in Materials and Methods. OD₆₀₀, optical density at 550 nm; T0, time zero.

blotting (Fig. 7). The site-specific E137Q mutation led to complete abolition of GeIE activity as detected by protease activity on THB-milk plates (data not shown). Electrophoretic analysis of the culture supernatants revealed the disappearance of the mature-size protein and the concomitant accumulation of an approximately 55-kDa protein which was present at a lower level than the wild-type enzyme (expressed by plasmid pML29) (Fig. 7A), indicating that active GeIE was necessary for post-translational modification of this protein (i.e., cleavage of the propeptide). Western blot analysis carried out with an anti-C-terminal His tag antibody confirmed the presence of an approximately 55-kDa His-tagged protein in the supernatant of the cells carrying the pML45 construct, while a His-tagged protein that was the size of mature GeIE was present, as expected, in the supernatant of the strain carrying plasmid pML37, as shown in Fig. 3. These results suggested that an active GeIE protein was required for the multiple maturation processes at the N- and C-terminal ends involving an autocatalytic mechanism. Similar results were reported for thermolysin (19) and the *Streptomyces cacaoi* extracellular neutral metalloprotease Npr (4). In contrast, mutations of the zinc-binding metalloprotease motif of the LasA protease of *Pseudomonas aeruginosa* or the BFT toxin of *Bacteroides fragilis*, which belong to different protease families, were shown to affect the activity but not the propeptide processing (8, 10).

The availability of the active site mutant GeIE proteins and evidence of their expression and secretion in the culture supernatant allowed us to test whether the E137Q substitution affected biofilm formation. The FA2-2 strains carrying the pML28 vector alone, the pML29 vector expressing wild-type GeIE, and the pML44 and pML45 plasmids expressing the E137Q mutant protein with and without a six-His tag, respectively, were assayed for biofilm formation as described in Materials and Methods. The results (Fig. 7C) indicated that while expression of wild-type GeIE induced biofilm growth, expression of the E137Q mutant proteins did not. This suggested that the protease activity, rather than the GeIE protein itself, is required for biofilm formation.

DISCUSSION

The zinc metalloprotease secreted by *E. faecalis*, gelatinase, is one of the few characterized virulence factors of this organ-

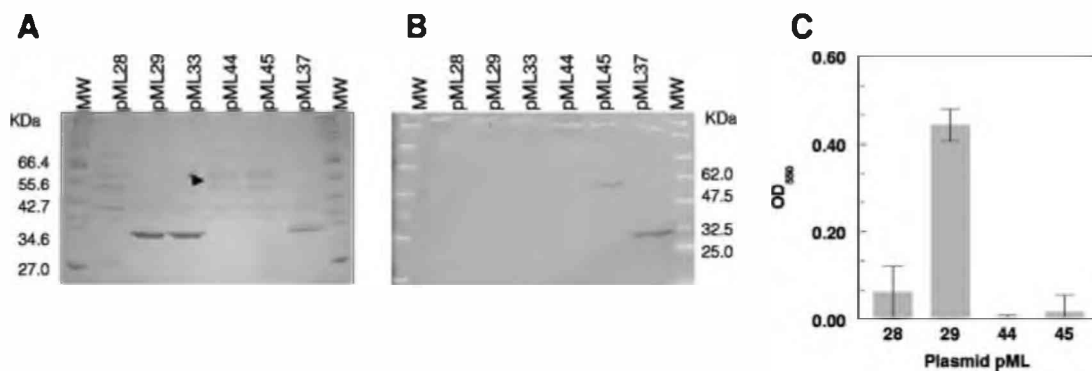


FIG. 7. Analysis of GelE E137Q protein secretion and biofilm formation. The culture supernatants were concentrated 20-fold and loaded on a 12% polyacrylamide gel for Coomassie blue staining (A) or for Western blot analysis using anti-C-terminal His tag antibody (B). The molecular weight standards were the New England Biolabs broad range protein marker (A) and the broad range prestained protein marker (B). The arrowhead indicates the full-length GelE protein band. (C) Analysis of biofilm formation by FA2-2 strains carrying plasmids expressing wild-type GelE (pML29), GelE E137Q (pML44), and His-tagged GelE E137Q (pML45). The control strain carried only the vector pML28. The error bars indicate the standard deviations. OD₅₅₀, optical density at 550 nm.

ism. Gelatinase has been shown to contribute to disease pathogenesis in a number of model systems, including peritonitis in mice (34), endophthalmitis in rabbits (7), and nematode killing (34). In addition to gelatin, only a few substrates are known for this protease. The list of known substrates includes the enterococcal conjugative sex pheromones and a number of host-derived *in vitro* substrates, including the insulin B chain, endothelin, hemoglobin, fibrinogen, fibronectin, collagen, and laminin (18). In addition, gelatinase has been shown to interfere with innate immune defenses through inactivation of the antibacterial peptides LL-37 and α -defensin (31, 32). Recently, gelatinase has been shown to be relevant for *in vitro* translocation of *E. faecalis* across polarized human enterocyte-like T84 cells (42).

As a member of the M4 family of zinc metalloproteases, gelatinase possesses a conserved catalytic domain typified by the primary-sequence HEXXH motif responsible for coordinating zinc in the active site (13). In addition, these zinc metalloproteases bind three or four calcium atoms, which are thought to stabilize the overall structure; the more thermally stable proteases bind four calcium atoms.

Members of the M4 family are secreted bacterial enzymes that are synthesized as proenzymes. The presequence, or signal peptide, targets the proenzyme to the secretion apparatus of either gram-negative or gram-positive cells. Maturation of the secreted proenzyme to its active mature form is thought to proceed by autocatalytic processing and transient association of the propeptide or prosequence with the active form (19, 26). The primary purpose of the propeptide is to function as an intramolecular chaperone facilitating the proper folding of the active protease (20, 21).

Here we showed that an active gelatinase is required for processing of the propeptide at the amino terminus and cleavage of the C-terminal tail. Mutation of a critical residue in the GelE active site (E137) resulted in secretion of a protein whose molecular weight approximated the molecular weight of the gelatinase proenzyme and that retained the carboxy-terminal histidine tag. This is reminiscent of the previously reported autocatalytic processing of thermolysin (19). However, auto-processing of GelE may not necessarily be an intramolecular

event, as reported for thermolysin (19). In supernatants of strain FA2-2 expressing the GelE E137Q His-tagged protein, we observed disappearance of the histidine tag upon addition of purified wild-type GelE, as determined by Western blot analysis with an anti-C-terminal His tag antibody (see Fig. S4 in the supplemental material). This suggested that at least the C-terminal processing event may not be an intramolecular event.

In addition to the amino-terminal processing, some M4 family members from bacteria belonging to the family *Vibrionaceae* also require processing at the carboxy terminus to become fully active (15, 23). Here we show that the *E. faecalis* gelatinase also requires proteolytic processing at the carboxy terminus, which makes it unique among members of the M4 family from gram-positive bacteria. Determination of the precise molecular mass of GelE purified from *E. faecalis* culture supernatants resulted in a value (33,030 Da) in good agreement with the original estimates of Mäkinen et al. obtained by using SDS-PAGE (33,000 Da), sizing column analysis (32,000 Da), or fast protein liquid chromatography (31,500 Da) (18).

Our investigation of the reason for the approximately 1,500-Da discrepancy with the predicted molecular mass of gelatinase indicated that a processing event takes place at the carboxy-terminal end, most likely between the D304 and I305 residues, and this requires the Q306 residue. As mentioned above, evidence suggested that GelE itself may be involved in the processing. An isoleucine residue is not as common as leucine on the imino side of the scissile bond of known substrates, but such a residue was found for angiotensin and neurotensin, providing further support for the autocatalytic hypothesis (18). Additionally, a hydrophobic amino acid residue has often been found at this position. Furthermore, the molecular weight of the I305P mutant protein suggests that there is an alternative processing event, possibly between Q306 and V307; this could also be a gelatinase processing site as glutamine at the carboxylic side and leucine at the imino side of the bond were found in the gelatinase processing site of the insulin B chain (18).

Nevertheless, additional proteases, such as the coregulated enzyme encoded by *sprE*, may contribute to the C-terminal

processing, as suggested by the molecular weight of the Q306P mutant protein, for which cleavage between the E312 and S313 or S313 and V314 residues must have occurred to explain the molecular weight obtained by mass spectrometry. Singh et al. recently showed that in the absence of a functional *fsr* system, a basal level of GelE and SprE is produced; thus, we cannot rule out the possibility that a basal level of SprE contributes to GelE maturation in strain FA2-2 (35).

The role of the Q306 residue in the processing of the C-terminal end of GelE is clearly critical for efficient cleavage, as observed with the wild-type protein; in the purification conditions used in this study, this protein is found essentially fully processed, while the Q306P mutant protein was processed at an alternative site, resulting in a protein with a slightly higher molecular weight than the wild-type protein (Fig. 4). Nevertheless, the GelE-CT14 His-tagged variant seemed to be processed to a molecular weight essentially identical to that of the wild-type protein (Fig. 3) despite the lack of the Q306 and I305 residues, which were replaced by Glu and Leu residues (introduced by the XhoI cloning site), respectively, that linked the protease to six histidine residues. However, this processing event was not highly efficient, and its efficiency seemed to increase when the I305 residue alone or the I305 and Q306 residues were still present (pML42 and pML43) (Fig. 3A and B), again suggesting a role for these residues in proper cleavage. Further studies of the biochemical properties of GelE are required to define the mechanism of this autocatalytic event.

The exact role of the GelE C-terminal processing event in the overall activity of the protease appears to be marginal because the Q306P mutant protein was only 25 to 30% less active than the wild-type proteins in the protease assay and it did not have a significant effect on biofilm formation. The C-terminal processing event, however, may delay maturation of the protein, and this may affect protease activity in some specific environmental conditions.

The observation that the Q306P mutant protein had a higher rate of autolysis (Fig. 6) raised the possibility that this GelE variant may remain more tightly associated with the cell membrane or cell wall, perhaps due to the slightly hydrophobic nature of the 14-amino-acid C-terminal tail. This could favor processing and maturation of the autolysin substrate of GelE, muramidase-1 (33), giving rise to the observed phenotype. Thus, processing of the C-terminal tail of gelatinase may have a regulatory role in cell division through the regulation of the autolysin's activity.

It is possible that the C-terminal 14 amino acids have a secondary signaling function. The role of the conjugative peptide pheromones in *E. faecalis*, which arise from processing of a bacterial signal peptide sequence of surface lipoproteins, is well characterized and provides a precedent for secondary functions for processed peptide sequences. However, so far there is no evidence for such a role for the GelE C-terminal peptide (3, 6). There is also no evidence that the C-terminal 14 amino acids of GelE have a distinct function in the protein other than slightly inhibiting gelatinase activity, as reported for the *Vibrio cholerae* non-O1 hemagglutinin/protease, whose processing of the C-terminal 2 kDa results in increased protease activity but decreased hemagglutinin activity (23). Thus,

the precise role of this domain in the biology of *Enterococcus* awaits elucidation.

ACKNOWLEDGMENTS

This research was supported in part by Public Health Service grant AI052289 from the National Institute of Allergy and Infectious Diseases. The Stein Beneficial Trust partially supported oligonucleotide synthesis and DNA sequencing.

We acknowledge Paula Oliviera for her technical contributions.

REFERENCES

- Bonten, M. J., M. K. Hayden, C. Nathan, J. van Voorhis, M. Matushek, S. Slaughter, T. Rice, and R. A. Weinstein. 1996. Epidemiology of colonisation of patients and environment with vancomycin-resistant enterococci. *Lancet* **348**:1615–1619.
- Bourgogne, A., S. G. Hilsenbeck, G. M. Dunny, and B. E. Murray. 2006. Comparison of OG1RF and an isogenic *fsrB* deletion mutant by transcriptional analysis: the Fsr system of *Enterococcus faecalis* is more than the activator of gelatinase and serine protease. *J. Bacteriol.* **188**:2875–2884.
- Chandler, J. R., and G. M. Dunny. 2004. Enterococcal peptide sex pheromones: synthesis and control of biological activity. *Peptides* **25**:1377–1388.
- Chang, P. C., and Y. H. Lee. 1992. Extracellular autoprocessing of a metalloprotease from *Streptomyces cacaoi*. *J. Biol. Chem.* **267**:3952–3958.
- Cruz-Rodriguez, A. L., and M. S. Gilmore. 1990. High efficiency introduction of plasmid DNA into glycine treated *Enterococcus faecalis* by electroporation. *Mol. Gen. Genet.* **224**:152–154.
- Dunny, G. M. 2007. The peptide pheromone-inducible conjugation system of *Enterococcus faecalis* plasmid pCF10: cell-cell signalling, gene transfer, complexity and evolution. *Philos. Trans. R. Soc. Lond. B* **362**:1185–1193.
- Engelbert, M., E. Mylonakis, F. M. Ausubel, S. B. Calderwood, and M. S. Gilmore. 2004. Contribution of gelatinase, serine protease, and *fsr* to the pathogenesis of *Enterococcus faecalis* endophthalmitis. *Infect. Immun.* **72**:3628–3633.
- Franco, A. A., S. L. Buckwold, J. W. Shin, M. Ascon, and C. L. Sears. 2005. Mutation of the zinc-binding metalloprotease motif affects *Bacteroides fragilis* toxin activity but does not affect propeptide processing. *Infect. Immun.* **73**:5273–5277.
- Gilmore, M. S., D. B. Clewell, P. Courvalin, G. M. Dunny, B. E. Murray, and L. B. Rice (ed.). 2002. The enterococci: pathogenesis, molecular biology, and antibiotic resistance. ASM Press, Washington, DC.
- Gustin, J. K., E. Kessler, and D. E. Ohman. 1996. A substitution at His-120 in the LasA protease of *Pseudomonas aeruginosa* blocks enzymatic activity without affecting propeptide processing or extracellular secretion. *J. Bacteriol.* **178**:6608–6617.
- Hancock, L. E., and M. Perego. 2004. Systematic inactivation and phenotypic characterization of two-component signal transduction systems of *Enterococcus faecalis* V583. *J. Bacteriol.* **186**:7951–7958.
- Hancock, L. E., and M. Perego. 2004. The *Enterococcus faecalis* *fsr* two-component system controls biofilm development through production of gelatinase. *J. Bacteriol.* **186**:5629–5639.
- Häse, C. C., and R. A. Finkelstein. 1993. Bacterial extracellular zinc-containing metalloproteases. *Microbiol. Rev.* **57**:823–837.
- Huycke, M. M., D. F. Sahm, and M. S. Gilmore. 1998. Multiple-drug resistant enterococci: the nature of the problem and an agenda for the future. *Emerg. Infect. Dis.* **4**:239–249.
- Kothary, M. H., and A. S. Kreger. 1987. Purification and characterization of an elastolytic protease of *Vibrio vulnificus*. *J. Gen. Microbiol.* **133**:1783–1791.
- Kristich, C. J., Y. H. Li, D. G. Cvitkovitch, and G. M. Dunny. 2004. Esp-independent biofilm formation by *Enterococcus faecalis*. *J. Bacteriol.* **186**:154–163.
- Lindsay, D., and A. von Holy. 2006. Bacterial biofilms within the clinical setting: what healthcare professionals should know. *J. Hosp. Infect.* **64**:313–325.
- Mäkinen, P.-L., D. B. Clewell, F. An, and K. K. Mäkinen. 1989. Purification and substrate specificity of a strongly hydrophobic extracellular metalloendopeptidase ("gelatinase") from *Streptococcus faecalis* (strain OG1-10). *J. Biol. Chem.* **264**:3325–3334.
- Marie-Claire, C., B. P. Roques, and A. Beaumont. 1998. Intramolecular processing of prothermolysin. *J. Biol. Chem.* **273**:5697–5701.
- Marie-Claire, C., E. Ruffet, A. Beaumont, and B. P. Roques. 1999. The prosequence of thermolysin acts as an intramolecular chaperone when expressed in trans with the mature sequence in *Escherichia coli*. *J. Mol. Biol.* **285**:1911–1915.
- Melver, K. S., E. Kessler, J. C. Olson, and D. E. Ohman. 1995. The elastase propeptide functions as an intramolecular chaperone required for elastase activity and secretion in *Pseudomonas aeruginosa*. *Mol. Microbiol.* **18**:877–889.
- Mohamed, J. A., and B. E. Murray. 2005. Lack of correlation of gelatinase production and biofilm formation in a large collection of *Enterococcus faecalis* isolates. *J. Clin. Microbiol.* **43**:5405–5407.

23. Naka, A., K. Yamamoto, T. Miwatani, and T. Honda. 1992. Characterization of two forms of hemagglutinin/protease produced by *Vibrio cholerae* non-O1. *FEMS Microbiol. Lett.* **77**:197–200.
24. Nakayama, J., Y. Cao, T. Horii, S. Sakuda, A. D. L. Akkermans, W. de Vos, and H. Nagasawa. 2001. Gelatinase biosynthesis-activating pheromone: a peptide lactone that mediates a quorum sensing in *Enterococcus faecalis*. *Mol. Microbiol.* **41**:145–154.
25. Nakayama, J., S. Chen, N. Oyama, K. Nishiguchi, E. A. Azab, E. Tanaka, R. Kariyama, and K. Sonomoto. 2006. Revised model for *Enterococcus faecalis* *fsr* quorum-sensing system: the small open reading frame *fsrD* encodes the gelatinase biosynthesis-activating pheromone propeptide corresponding to staphylococcal AgrD. *J. Bacteriol.* **188**:8321–8326.
26. O'Donohue, M. J., and A. Beaumont. 1996. The roles of the prosequence of thermolysin in enzyme inhibition and folding *in vitro*. *J. Biol. Chem.* **271**:26477–26481.
27. O'Donohue, M. J., B. P. Roques, and A. Beaumont. 1994. Cloning and expression in *Bacillus subtilis* of the *npr* gene from *Bacillus thermoproteolyticus* Rokko coding for the thermostable metalloprotease thermolysin. *Biochem. J.* **300**:599–603.
28. Qin, X., K. V. Singh, G. M. Weinstock, and B. E. Murray. 2001. Characterization of *fsr*, a regulator controlling expression of gelatinase and serine protease in *Enterococcus faecalis* OG1RF. *J. Bacteriol.* **183**:3372–3382.
29. Richards, M. J., J. R. Edwards, D. H. Culver, and R. P. Gaynes. 2000. Nosocomial infections in combined medical-surgical intensive care units in the United States. *Infect. Control Hosp. Epidemiol.* **21**:510–515.
30. Sabat, A., K. Kosowska, K. Poulsen, A. Kasproicz, A. Sekowska, B. B. van Den, J. Travis, and J. Potempa. 2000. Two allelic forms of the aureolysin gene (*aur*) within *Staphylococcus aureus*. *Infect. Immun.* **68**:973–976.
31. Schmidtchen, A., I. M. Frick, E. Andersson, H. Tapper, and L. Björck. 2002. Proteinases of common pathogenic bacteria degrade and inactivate the antibacterial peptide LL-37. *Mol. Microbiol.* **46**:157–168.
32. Schmidtchen, A., I. M. Frick, and L. Björck. 2001. Dermatan sulphate is released by proteinases of common pathogenic bacteria and inactivates antibacterial alpha-defensin. *Mol. Microbiol.* **39**:708–713.
33. Shockman, G. D., and M. C. Cheney. 2007. Autolytic enzyme system of *Streptococcus faecalis*. V. Nature of the autolysin-cell wall complex and its relationship to properties of the autolytic enzyme of *Streptococcus faecalis*. *J. Bacteriol.* **98**:1199–1207.
34. Sifri, C. D., E. Mylonakis, K. V. Singh, X. Qin, D. A. Garsin, B. E. Murray, F. M. Ausubel, and S. B. Calderwood. 2002. Virulence effect of *Enterococcus faecalis* protease genes and the quorum-sensing locus *fsr* in *Caenorhabditis elegans* and mice. *Infect. Immun.* **70**:5647–5650.
35. Singh, K. V., S. R. Nallapareddy, E. C. Nannini, and B. E. Murray. 2005. *Fsr*-independent production of protease(s) may explain the lack of attenuation of an *Enterococcus faecalis* *fsr* mutant versus a *gelE-sprE* mutant in induction of endocarditis. *Infect. Immun.* **73**:4888–4894.
36. Su, Y. A., M. C. Sulavik, P. He, K. K. Mäkinen, P.-L. Mäkinen, S. Fiedler, R. Wirth, and D. B. Clewell. 1991. Nucleotide sequence of the gelatinase (*gelE*) from *Enterococcus faecalis* subsp. *liquefaciens*. *Infect. Immun.* **59**:415–420.
37. Tannock, G. W., and G. Cook. 2002. Enterococci as members of the intestinal microflora of humans, p. 101–132. *In*: M. S. Gilmore, D. B. Clewell, P. Courvalin, G. M. Dunny, B. E. Murray, and L. B. Rice (ed.), *The enterococci: pathogenesis, molecular biology, and antibiotic resistance*. ASM Press, Washington, DC.
38. Toledo-Arana, A., J. Valle, C. Solano, M. J. Arrizubieta, C. Cucarella, M. Lamata, B. Amorena, J. Leiva, J. R. Penades, and I. Lasa. 2001. The enterococcal surface protein, Esp, is involved in *Enterococcus faecalis* biofilm formation. *Appl. Environ. Microbiol.* **67**:4538–4545.
39. Trieu-Cuot, P., C. Carlier, C. Poyart-Salmeron, and P. Courvalin. 1990. A pair of mobilizable shuttle vectors conferring resistance to spectinomycin for molecular cloning in *Escherichia coli* and in Gram-positive bacteria. *Nucleic Acids Res.* **18**:4296.
40. Trieu-Cuot, P., and P. Courvalin. 1983. Nucleotide sequence of the *Streptococcus faecalis* plasmid gene encoding the 3'5'-aminoglycoside phosphotransferase type III. *Gene* **23**:331–341.
41. Waters, C. M., M. H. Antiporta, B. E. Murray, and G. M. Dunny. 2003. Role of the *Enterococcus faecalis* GelE protease in determination of cellular chain length, supernatant pheromone levels, and degradation of fibrin and misfolded surface proteins. *J. Bacteriol.* **185**:3613–3623.
42. Zeng, J., F. Teng, and B. E. Murray. 2005. Gelatinase is important for translocation of *Enterococcus faecalis* across polarized human enterocyte-like T84 cells. *Infect. Immun.* **73**:1606–1612.