

Effects of water immersion ageing on the mechanical properties of flax and jute fibre biocomposites evaluated by nanoindentation and flexural testing

Journal:	<i>Journal of Composite Materials</i>
Manuscript ID:	JCM-12-0602.R2
Manuscript Type:	Original Manuscript
Date Submitted by the Author:	25-Mar-2013
Complete List of Authors:	Dhakal, Hom Nath; University of Portsmouth, Zhang, Zhongyi; University of Portsmouth, Engineering Bennett, Nick; University of Portsmouth, Engineering Arraiza, Alberto; University of the Basque Country, Nautical and Marine Machine López-Arraiza, Alberto; IDEKO SCoop., Composites Laboratory
Keywords:	Biocomposites, natural fibre composites, mechanical properties, flexural properties , hand lay-up method, water absorption
Abstract:	<p>Flax and jute fibres are inexpensive and easily available bast fibres and they are extensively used as reinforcement in polymer matrix composites. However, due to their susceptibility to moisture absorption, their application is restricted to non-structural interior products. In this study, flax and jute fibre reinforced bioresin based epoxy biocomposites were fabricated using hand lay-up method and their nanoindentation and flexural properties were investigated. In order to study the effects of water absorption on the nanoindentation and flexural properties, the biocomposites were subjected to water immersion tests by immersing specimens in a de-ionised water bath at 25 oC for a period of 961 hours. The nanoindentation behaviour and flexural properties of water immersed specimens were evaluated and compared alongside with dry specimens. The percentage of moisture uptake and diffusion coefficient () was recorded higher for jute reinforced specimens compared to flax. The flexural properties for both types of specimens were found to decrease with increase in percentage moisture uptake. Comparison of flexural strength and flexural modulus between flax dry and flax wet biocomposites showed that wet samples lost almost 40% of its strength and 69% of its modulus respectively, compared to dry flax samples. The jute wet samples lost 60% of its strength and 80% of its modulus, respectively, compared to dry samples. The nanohardness value decreased from 0.207 GPa to 0.135 GPa for dry flax sample after immersion in water.</p>

1
2
3
4
5
6
7
8
9
10
11
12
13
14
15
16
17
18
19
20
21
22
23
24
25
26
27
28
29
30
31
32
33
34
35
36
37
38
39
40
41
42
43
44
45
46
47
48
49
50
51
52
53
54
55
56
57
58
59
60



SCHOLARONE™
Manuscripts

For Peer Review

Figure captions

Figure 1: Schematic view of a nanoindentation testing set up

Figure 2: Typical loading/unloading curve

Figure 3: Water absorption curves for different samples

Figure 4: Loading/unloading curves for different dry samples

Figure 5: Loading/unloading curves for wet samples

Figure 6: Load vs. Deformation curves for different samples

Figure 7: SEM images of tension side of dry (a) and wet (b) flexural sample

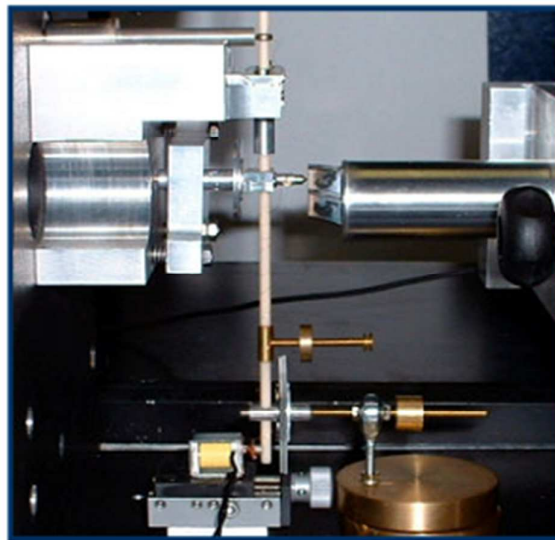


Figure 1: Schematic view of a nanoindentation testing set up

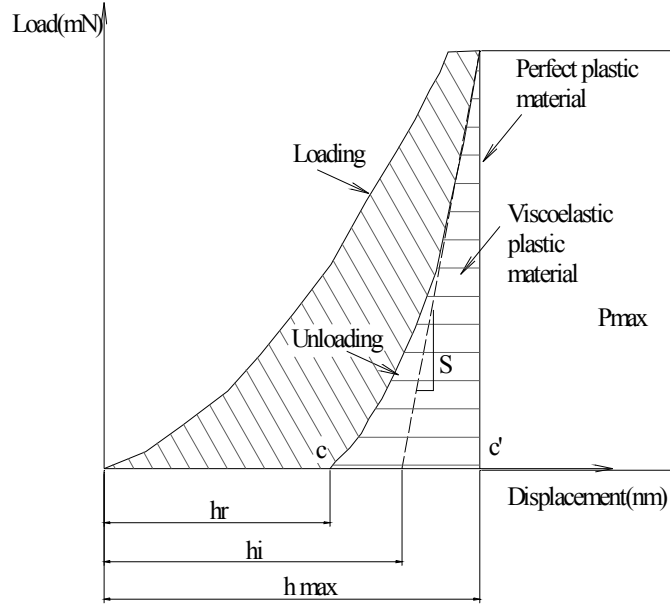


Figure 2: Typical loading/unloading curve

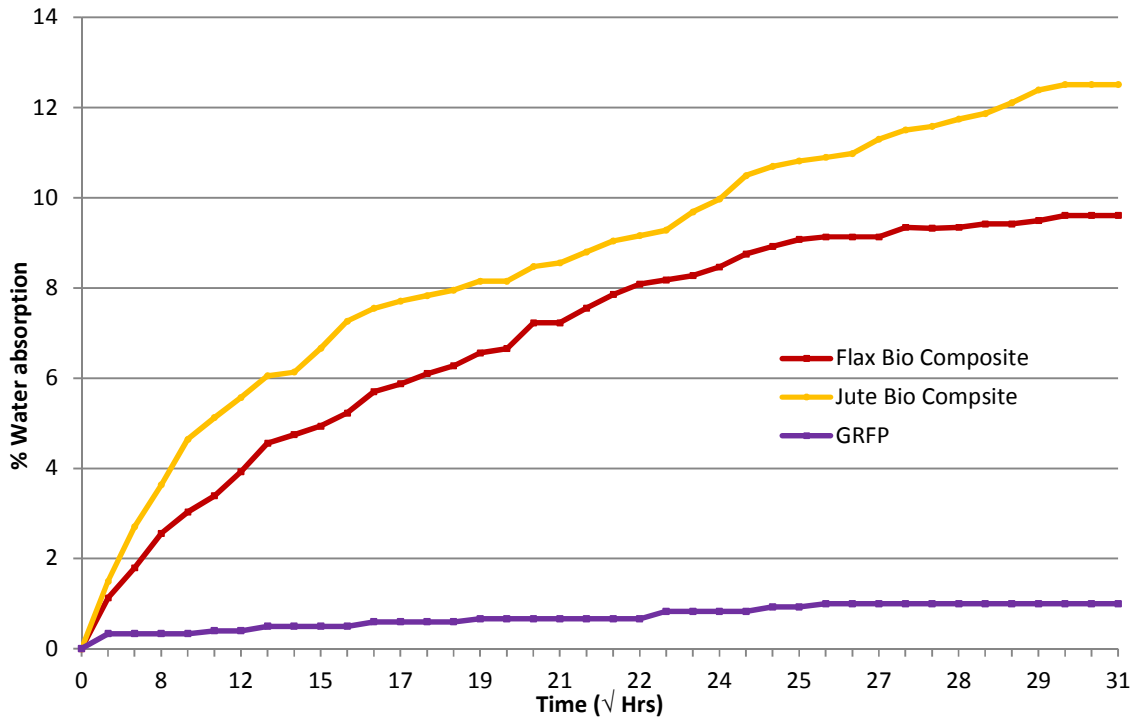


Figure 3: Water absorption curves for different samples

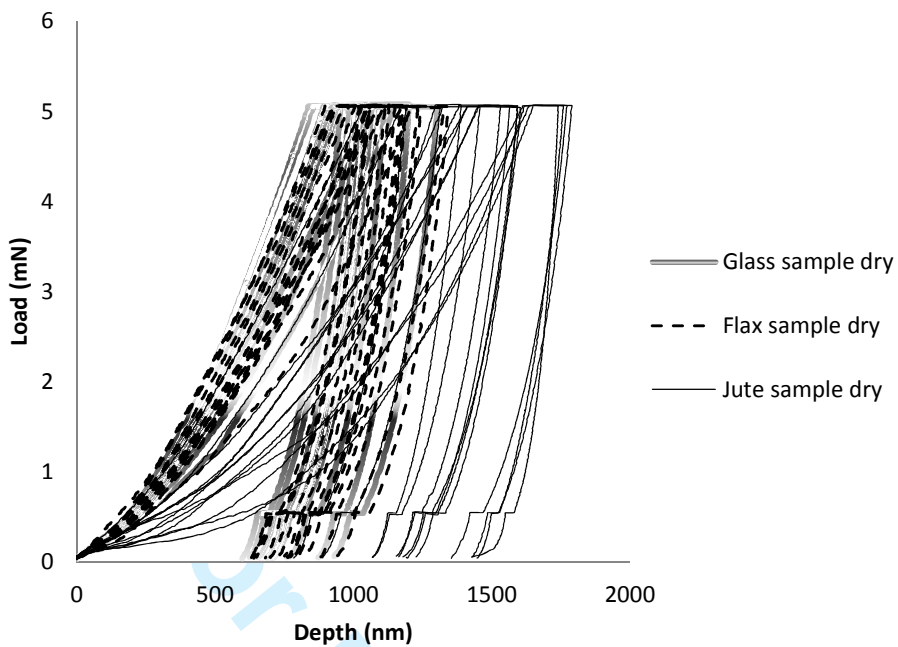


Figure 4: Loading/unloading curves for different dry samples

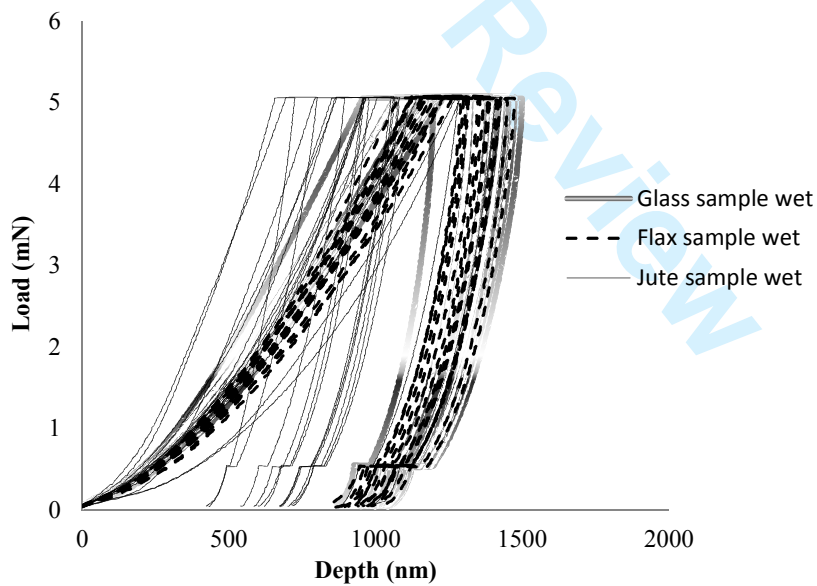


Figure 5: Loading/unloading curves for wet samples

1
2
3
4
5
6
7
8
9
10
11
12
13
14
15
16
17
18
19
20
21
22
23
24
25
26
27
28
29
30
31
32
33
34
35
36
37
38
39
40
41
42
43
44
45
46
47
48
49
50
51
52
53
54
55
56
57
58
59
60

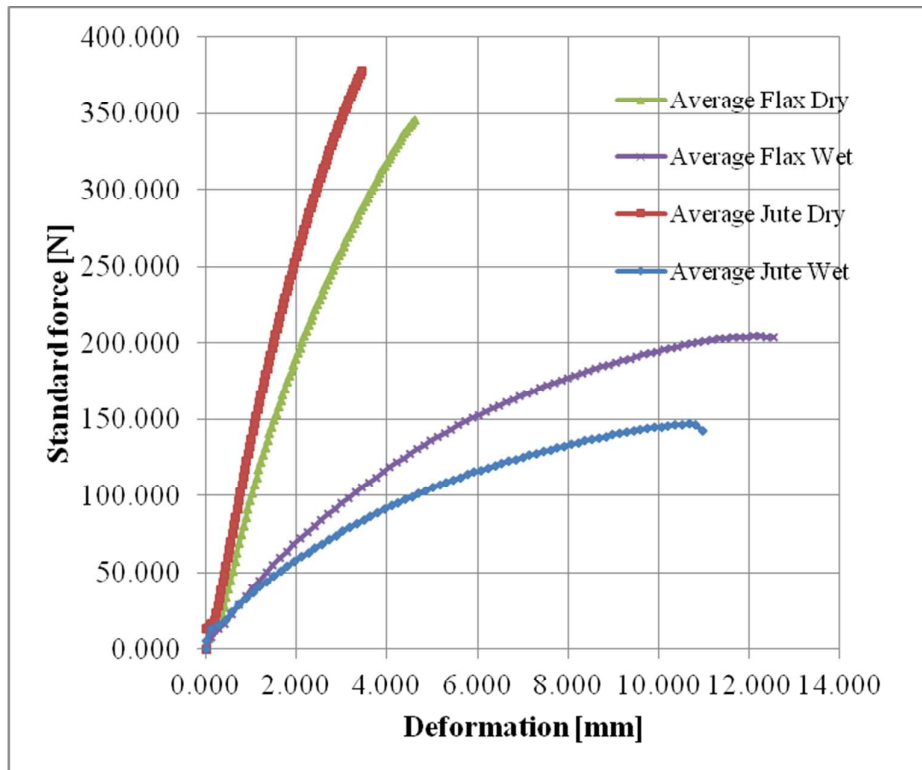


Figure 6: Load vs. Deformation curves for different samples

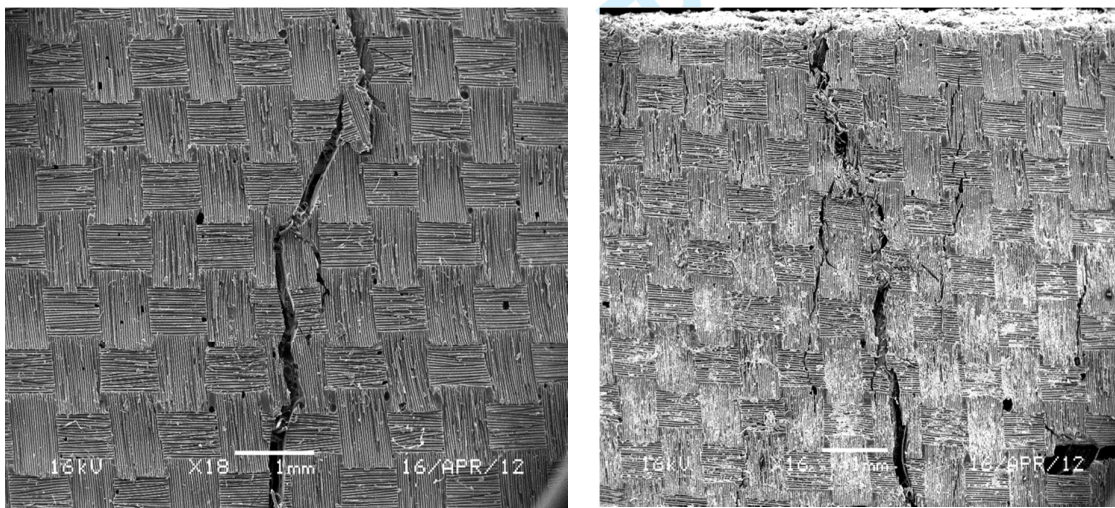


Figure 7: SEM images of tension side of dry (a) and wet (b)

1
2
3
4
5
6 **Effects of water immersion ageing on the mechanical properties of flax and jute fibre**
7 **biocomposites evaluated by nanoindentation and flexural testing**
8

9 H. N. Dhakal^{*a}, Z. Y. Zhang^a, N. Bennett^a, A. Lopez-Arraiza^b, F.J. Vallejo^c

10
11 ^a *Advanced Polymer and Composites (APC) Research Group*
12 *School of Engineering*

13 *University of Portsmouth, Anglesea Road, Anglesea Building, Portsmouth, Hampshire, PO1 3DJ,*
14 *U.K.*

15
16 ^b *University of the Basque Country (UPV/EHU) Higher Tech. School of Nautical and Marine*
17 *Machines Maria Diaz de Haro, 68 – E48920 Portugalete-Bizkaia (Spain).*

18
19 ^c *IDEKO-IK4 Research Alliance, Arriaga industrialdea, 2, E-20870 Elgoibar (Gipuzkoa), Spain.*

20
21 **Abstract**

22 Flax and jute fibres are inexpensive and easily available bast fibres and they are extensively used as
23 reinforcement in polymer matrix composites. However, due to their susceptibility to moisture
24 absorption, their application is restricted to non-structural interior products. In this study, flax and
25 jute fibre reinforced bioresin based epoxy biocomposites were fabricated using hand lay-up method
26 and their nanoindentation and flexural properties were investigated. In order to study the effects of
27 water absorption on the nanoindentation and flexural properties, the biocomposites were subjected
28 to water immersion tests by immersing specimens in a de-ionised water bath at 25 °C for a period of
29 961 hours. The nanoindentation behaviour and flexural properties of water immersed specimens
30 were evaluated and compared alongside with dry specimens. The percentage of moisture uptake and
31 diffusion coefficient (D) was recorded higher for jute reinforced specimens compared to flax. The
32 flexural properties for both types of specimens were found to decrease with increase in percentage
33 moisture uptake. Comparison of flexural strength and flexural modulus between flax dry and flax
34 wet biocomposites showed that wet samples lost almost 40% of its strength and 69% of its modulus
35 respectively, compared to dry flax samples. The jute wet samples lost 60% of its strength and 80%
36 of its modulus, respectively, compared to dry samples. The **nanohardness** value decreased from
37 0.207 GPa to 0.135 GPa for dry flax sample after immersion in water.
38
39
40
41
42
43
44
45

46 **Keywords:** Biocomposites; natural fibre composites; mechanical properties; flexural properties
47 hand lay-up method, water absorption.
48
49

50
51 *** Corresponding author Tel: + 44 (0) 23 9284 2582; fax: + 44 (0) 23 9284 2351.**

52 E-mail: h.n.dhakal@port.ac.uk (H.N. Dhakal).
53
54
55
56
57
58
59
60

Formatted: Justified

Formatted: Font color: Red

1 - Introduction

In the last decade, the use of natural plant fibres as reinforcement in polymer composites for making low cost engineering materials has attracted considerable interest. Growing consumer pressure as well as strict environmental legislation has forced manufacturing industries to search for new environmentally compatible materials that can substitute for conventional non-renewable reinforcing materials such as glass fibre [1-5]. The advantages of natural plant fibres over traditional glass fibres are high specific properties, low cost, low density, non abrasion during processing, enhanced energy recovery, reduced dermal and respiratory irritation and good biodegradability [6, 7]. However, natural fibre reinforced composites and biocomposites are more vulnerable to moisture absorption because of the hydrophilic nature of natural fibres resulting in low moisture resistance behaviour. The hydrophilic problem may be further complicated when natural fibre composites are immersed in water then dried, water uptake and weight loss cause residual stresses and microcracks, which leads to a permanent damage resulting in a poor performance and final failure [8, 9].

Hygrothermal effects are confirmed by many authors and show that the diffusion of water into the composites can cause swelling, plasticization, and hydrolysis, profoundly affecting the physical, mechanical and thermal properties as a result of weaker interfacial bonding between fibres and matrix [10, 11]. Chow and Li [12] studied the effect of moisture absorption on the mechanical properties of sisal-fibre-reinforced polypropylene composites. They reported that water absorption significantly weakened the fibre matrix interface. The effect of water immersion on mechanical properties of hemp fibre reinforced unsaturated polyester composites at room temperature and elevated temperatures were investigated by Dhakal et al. [13]. The report suggests that moisture absorption causes reduction in both tensile and flexural properties.

Thus, in order to use natural fibre composites and biocomposites in structural applications, it is necessary to develop a comprehensive understanding of the mechanisms of ageing and environmental exposure, and their effect on various properties.

1
2
3
4
5
6 Nanoindentation has become a popular way of measuring the mechanical properties of
7 materials at smaller length and load scales than allowed by other methods [14-17]. More recently,
8 Aldousiri *et al* [18] used this technique to investigate the hardness and modulus of spent PA-12 and
9 its nanocomposites with varying concentrations of clay loading. Bourmaud and Baley [19], for
10 example, studied the effect of process parameters on the mechanical and thermal behaviour of flax
11 fibre biocomposites using thermogravimetric analysis (TGA) measurements and nanoindentation
12 testing. They concluded in their report that the nanoindentation technique is an appropriate
13 technique for comparison of modulus and hardness properties of vegetable fibre composites.
14 However, there are hardly any reported works on the detection of water absorption damage on the
15 nanomechanical and flexural properties of flax and jute fibre reinforced biocomposite materials.

16
17
18
19
20
21
22
23
24
25 **This study aims at investigating** the effect of water immersion ageing on the
26 nanomechanical and mechanical properties of two commonly used flax and jute reinforced
27 biocomposites. The investigated nanomechanical properties include nanohardness and elastic
28 modulus and mechanical properties include flexural strength and modulus.

Formatted: Highlight

2 – Materials and Experimental Procedure

29
30
31
32
33
34
35 The matrix material used in this study was Super Sap TM 100/1000 (Entropy Resins, Inc.)
36 of which 55 % is made from waste streams of other industrial processes, such as wood pulp and bio
37 fuels production. The mixing ratio of the 1000 Hardener was 100:48 by weight.

Formatted: Justified

38
39
40
41
42
43
44
45
46
47
48
49
50
51
52
53
54
55
56
57
58
59
60
The jute fibre reinforcement was supplied by Tejijut Company as a balanced 0/90 plain
weave fabric of 305 g/m² in weight. The flax fibre reinforcement was FLAXPLY© supplied by
Lineo Company as a balanced fabric 0/90 of 200 g/m² in weight. The laminates were manufactured
by hand lay-up and vacuum bagging process in plates of 3 mm thick consisting of 5 jute plies for
jute and 8 flax plies for flax laminates, respectively. [The different plies were used in jute and flax to
make it similar weight fraction so that they can be compared.](#) Total fiber weight fraction was 41%
and the void content was 4.6% for both samples. **The void content was calculated according to**

Formatted: Highlight

ASTM D2734-94 and the percentage in weight was calculated by means of weighing the fiber used and the final biocomposite plate.

2.1 – Water absorption test

The water absorption behaviour of flax and jute fibres reinforced epoxy based biocomposites was investigated in accordance with BS EN ISO 62:1999 [20]. First, all the specimens were dried in an oven at 100°C and then were allowed to cool to room temperature in a desiccator before weighing them to the nearest 0.1 mg. This process was repeated until the mass of the specimens were reached constant. Water absorption tests were conducted by immersing the specimens in a de-ionised water bath for 961 hours. The moisture absorption (moisture content) was calculated by the weight difference.

2.2 – Nanoindentation testing

For the nanoindentation specimens, small coupons were cut from the composite laminates with square geometry of 18 mm side and thickness approximately 3 ± 0.1 mm. A suitable adhesive was used to fix them onto the nanoindentation apparatus. The tests were carried out using Nano Test™ equipment from Micro Materials U.K. as shown in Figure 1. A (three sided pyramid) Berkovich diamond indenter tip was used to measure the nanohardness properties. All tests were conducted at room temperature. Sixteen symmetrical indentations (in the form of a 4 x 4 matrix, 30 µm apart) were made in each specimen. All the testing was programmed in such a way that the indenter came into contact with the sample surface and load increased at a constant rate of 2 mN/s until the load reached the maximum load, P_{max} of 5 mN. Then the load was held at its maximum load for 60 s before unloading at same constant rate.

A schematic representation of a typical loading–depth curve obtained during a one full cycle of loading and unloading is presented in Figure 2. As a load is applied to an indenter in contact with a specimen surface, an indent/impression is made which consists of plastic and elastic deformation. Recovery of elastic deformation occurs at the start of unloading. The important quantities in this loading-unloading cycle are maximum load (P_{max}), the maximum depth (h_{max}), the final depth after

unloading (h_r) and the slope of the upper portion of the unloading curve, S , known as the elastic contact stiffness. The hardness and elastic modulus can be derived by the most widely used method developed by Oliver and Pharr [21].

2.3 – Flexural testing

The flexural strength and modulus of flax and jute biocomposites were performed using a Zwick/Roell Z030 universal testing machine supplied by Zwick in a three-point bending mode using a cross head speed of 2 mm/min. The three point bending test specimens were 70 mm long, 15 mm width and 3 mm thick.

2.4 – Scanning Electron Microscopy

The tension surfaces of the fractured specimens subjected to flexural testing were examined using a scanning electron microscope (SEM) JEOL JSM 6100, supplied by JEOL (UK) Ltd. After adhering to SEM stubs, a thin layer of gold/palladium was applied to the specimens prior to SEM examination.

3 – Results and Discussion

3.1- Moisture absorption behaviour

The percentage of water absorption in the biocomposite samples was calculated by weight difference between the samples immersed in water and the dry samples using the equation (1).

$$\Delta M(t) = \frac{M_t - M_o}{M_o} \times 100 \quad (1)$$

where $\Delta M(t)$ is moisture uptake, M_o and M_t are the mass of the specimen before and during aging, respectively.

The coefficient of diffusion (D) defined as the slope of the normalised mass uptake against \sqrt{t} was calculated through working out the diffusion co-efficient from the data obtained and compiled into the graph in figure using the equation (2):

$$D = \pi \left(\frac{kh}{4M_m} \right)^2 \quad (2)$$

Where, k is the initial slope of a plot of $M(t)$ versus $t^{1/2}$, M_m is the maximum weight gain and h is the thickness of the composites.

Figure 3 shows percentage of weight gain as a function of square root of time for flax and jute samples immersed in de-ionised water at room temperature (23 °C). The maximum percentage weight gain for flax, jute and glass fibre composite immersed at room temperature for 961 hours is 9.61, 14.41 and 0.99%, respectively. The water uptake process for both flax and jute bicomposites is linear in the beginning, then slows and approaches saturation after prolonged time, following a Fickian diffusion process. As it can be seen in Figure 3, both the initial rate of water absorption and the maximum water uptake increases for flax and jute bicomposites as the immersion time increases. Moisture diffusion in polymeric composites has shown to be governed by three different mechanisms similar to polymeric matrix materials [22, 13].

1. The first involves diffusion of water molecules inside the micro gaps between polymer chains.
2. The second involves capillary transport into the gaps and flaws at the interfaces between fibre and the matrix.
3. The third involves transport of micro-cracks in the matrix arising from the swelling of fibres (particularly in the case of natural fibre bicomposites such as flax and jute).

Table 1 presents the diffusion coefficients for both bicomposite specimens. It can be seen from Figure 3 and Table 1 that the maximum moisture content and the diffusion coefficient values increases steadily with an increase in immersion time up to saturation. The increase is more pronounced for the jute specimens than flax showing jute fibre bicomposite absorbing water at greater rate than that of flax.

The major constituents of mature unprocessed jute fibre are cellulose (61-71.5 wt.%), hemicelluloses (13.6-20.4 wt.%) lignin (12-13 wt.%) and pectin (0.2 wt.%). The constituent of flax fibre is cellulose (71 wt.%), hemicelluloses (18.6-20.6 wt.%), while other components are lignin (2.2 wt.%) and pectin (2.3 wt.%). As hemicelluloses are a very hydrophilic

1
2
3
4
5
6 polymer, it is largely responsible for the water absorption behaviour exhibited by plant fibres [23,
7
8 24]. With higher percentage of cellulose and hemicelluloses content of flax fibre, one would have
9
10 expected flax composite to have higher moisture content than that of jute fibre composites.
11
12 However, the jute fibre reinforced biocomposite samples show higher water absorption than that of
13
14 flax samples. The disparity in water absorption between jute and flax composites in this study can
15
16 be attributed due to some other factors such as weaker fibre matrix adhesion for jute biocomposites
17
18 compared to flax, hence promotes higher moisture content. As the natural fibres exhibit hydrophilic
19
20 behaviour in their natural environment, this would explain the increased rate of water absorption
21
22 compared with that of glass fibre as seen in the Diffusion co-efficient in Table 1.
23
24

25 3.2- Effect of moisture absorption on nanomechanical and flexural properties

26 3.2.1 Nanomechanical properties

27
28 The average load versus indentation depth for all tested samples in dry and wet conditions is
29 shown in Figures 4 and 5. The average values of experimental results extracted from the loading-
30 unloading curves are presented in Table 2. It can be seen from figures 4 and 5 that there are
31 significant differences in terms of slope of the curves and depth for the sample with and without
32 water absorption.
33
34
35
36
37

38 For flax reinforced biocomposite specimens, nanoindentation test results show that as the
39 water absorption increases, the hardness and the elastic modulus decreases. The nanohardness value
40 for the flax dry sample is 0.207 GPa, whereas for the wet sample, the hardness decreases from
41 0.207 GPa to 0.135 GPa (an approximately 35% decrease). Similarly, the reduced modulus of flax
42 dry sample is reduced from 4.483 MPa to 3.963 MPa (an approximately 11.6% decrease) as a result
43 of moisture ingress. The decrease in nanohardness and reduced modulus of the flax sample is
44 associated with the weak interface between the matrix and the reinforcement as a result of water
45 absorption. The hardness value for jute dry specimen is 0.107 GPa, whereas the hardness value for
46 jute wet sample increases to 0.112 GPa (an increase of 5%). For jute sample, it does not seem like
47
48
49
50
51
52
53
54

1
2
3
4
5
6 water absorption has had any adverse effect on hardness value. However, there is decrease in
7
8 reduced modulus for jute wet sample, from 3.687 to 3.331 MPa (decrease of 9.7%) as a result of
9
10 water absorption.

11 The deformation depth increases for water immersed specimens compared to the dry ones.
12
13 This phenomenon can be explained by considering the water uptake characteristics of flax and jute
14
15 biocomposites as follows: As the immersion time increases, the moisture uptake also increases due
16
17 to the hydrophilic nature of these fibres which eventually lead to the formation of a weak fibre
18
19 matrix interface. When the water uptake reaches its saturation level, the bound water and free water
20
21 stays as a reservoir in the composite. This leads to softening of the fibres and weakening of the fibre
22
23 matrix adhesion resulting in reduced material properties. When the indentation probe reaches these
24
25 soft fibres and weakened interfaces, the deformation becomes higher and the hardness gets reduced.

26 27 **3.2.2 Flexural properties**

28 The load vs. deformation curves for flax and jute biocomposite specimens are shown in
29
30 Figure 6. Average values for the flexural results calculated from the load vs. deformation traces of
31
32 five specimens tested in the flexural testing for flax and jute biocomposite samples are presented in
33
34 Table 3. The flexural strength and modulus drop significantly for both flax and jute samples after
35
36 the water immersion. The decrease in flexural properties after water immersion can be related to the
37
38 weak fibre-matrix interface due to water absorption. Jute fibre reinforced wet specimen displayed
39
40 the highest reduction in flexural strength and modulus values, a decrease of 60.4 and 80.0%,
41
42 respectively, compared with the dry jute sample. This reduction can be explained as excessive water
43
44 absorption by the wet jute sample leads to an increase in the absorbed bound water and a decrease
45
46 in free water. Another reason for the reduction of strength and modulus for wet samples can be
47
48 explained by the weakening of the cellulose structures of natural fibres by the water molecules in
49
50 the cellulose network structure in which water acts as a plasticiser and it permits cellulose
51
52 molecules to move freely. Consequently the mass of the cellulose is softened and can change the
53
54 dimensions of the fibre easily with the application of forces [25].

Formatted: Justified

1
2
3
4
5
6 The flexural test results show that of all the flexural properties investigated, the flexural
7
8 modulus was affected most by water absorption as seen in Table 3. The flexural modulus decreases
9
10 for both flax and jute reinforced samples. The reduction in flexural modulus for flax and jute
11
12 reinforced specimens compared to dry specimens is approximately 69.2 and 80.0%, respectively. A
13
14 plausible explanation for this would be that, the elastic modulus is a fibre-sensitive property in
15
16 composites and is affected as a result of moisture absorption. This effect can be particularly greater
17
18 for the composites with higher fibre and void content, in which stress transfer capability between
19
20 fibre and matrix interface gets sharply reduced due to moisture content.

21
22 The failure flexural deformation value for all water-immersed specimens was found to
23
24 increase compared to dry specimens. The increase in elongation upon exposure of the samples to a
25
26 wet environment can be attributed to the plasticization of natural fibre biocomposite samples caused
27
28 by moisture absorption.

29 3.3 Failure mechanisms

30
31 Figure 7 (a) and (b) shows a Scanning Electron Microscope (SEM) images of dry and wet
32
33 flax biocomposites. As seen in the SEM images in Figure 7 image (a) shows the failure of a dry
34
35 specimen exhibiting a definitive fracture line due to the tension created under the 3 point bending
36
37 test. The fracture in image (a) in comparison with image (b) shows a clean brittle fracture whereas
38
39 (b) shows a ductile fracture with numerous other secondary cracks forming as well as the main
40
41 fracture line. These smaller secondary cracks show the effects of the water absorption and are likely
42
43 to be the result of de-bonding [as well as delamination](#) between the fibre reinforcement and the
44
45 matrix itself. This would explain the lower mechanical performance of the wet samples compared
46
47 with the dry. Increased ductility shown in image (b) would explain the increased deformation of the
48
49 wet samples. This ultimately results in a loss of stiffness and rigidity which would explain the lower
50
51 peak loads and flexural strength in the samples subjected to water absorption compared with the dry
52
53 samples.
54
55
56
57
58
59
60

Formatted: Highlight

Formatted: Justified

4 – Conclusions

Water absorption behaviour and the effect of water absorption on the nanohardness and the flexural properties of woven fabric flax and jute fibre reinforced bioresin based epoxy biocomposites have been studied following immersion at room temperature with the application of nanoindentation and flexural testing. Under the current test conditions, both biocomposites followed the fickian diffusion behaviour, where the moisture uptake percentage increases linearly with square root of time and gradually levels off after the saturation level is reached. The nanohardness value for the flax dry sample is 0.207 GPa, whereas for the wet sample, the hardness decreases from 0.207 GPa to 0.135 GPa (an approximately 35% decrease). Similarly, the reduced modulus of flax dry sample is reduced from 4.483 MPa to 3.963 MPa (an approximately 11.6% decrease) after exposure to water. The decrease in nanohardness and reduced modulus properties of water immersed specimen is associated with the weak fibre interface as a result of water absorption. Similarly, the water absorption had negative effect on flexural properties. The reduction in flexural strength for flax and jute reinforced specimens compared to dry specimens is approximately 40 and 60%, respectively. Similarly, the reduction in flexural modulus for flax and jute specimens compared to dry specimens is approximately 69 and 80%, respectively. A plausible explanation for this would be that, the strength and elastic modulus is a fibre-sensitive property in composites and is affected as a result of moisture absorption.

Formatted: Justified

Formatted: Font color: Red

Acknowledgements:

"This research received no specific grant from any funding agency in the public, commercial, or not-profit sectors."

References

1. Faruk, O., Bledzki, A.K., Fink, H.P., and Sain, M. (2012). Biocomposites reinforced with naturalfibres: 2000-2010, Progr Polym Sci.; d.o.i./10.1016/j.progpolymsci.2012.04.003.

Formatted: Justified

2. Bledzki A.K. and, Gassan J. (1999). Composites reinforced with cellulose based fibers, *Progr Polym Sci.*; 24(2): 221-74.
3. Behzad T. and Sain M. (2007). Finite element modeling of polymer curing in natural fiber reinforced composites. *Compos Sci Technol.*; 67(7/8): 1666-73.
4. Dhakal H.N., Zhang Z.Y. and Richardson M.O.W. (2009). Creep behaviour of natural fibre reinforced unsaturated polyester composites, *Journal of Biobased Materials Bioenergy*, 2009, (3), 1-6.
5. Bolton J (1995). The potential of plant fibres as crops for industrial use. *Outlook Agric*; 24: 85-9.
6. Shahzad, A. (2012). Hemp fibre and its composites-a review, *J. Comp. Mater.*, 46:973-986.
7. Dhakal, H.N., Zhang, Z.Y., and Richardson, M.O.W, and Errajhi, O.A.Z. (2007). The low velocity impact response of non-woven hemp fibre reinforced unsaturated polyester composites. *Comp. Struct.* ; 81(4): 559-67.
8. Panthapulakkal, S. and Sain, M. (2007). Studies on the water absorption properties of short hemp-glass fibre hybrid polypropylene composites. *J. Comp. Mater*; 41:1871-1883.
9. Thwe, M.M. and Liao, K. (2002). Effects of environmental aging on the mechanical properties of bamboo-glass fiber reinforced polymer matrix hybrid composites. *Comp. Part A*; 33: 43-52.
10. Gassan, J, and Bledzki, A.K. (1997). Effect of moisture content on the properties of silanized jute-epoxy composites. *Polym. Comp.*; 18(2): 179-84.
11. Chen, H., Miao, M. and Ding, X. (2011). Chemical treatments of bamboo to modify its moisture absorption and adhesion to vinyl ester resin in humid environment. *J. Comp. Mater.* 45:1533-1512
12. Chow, C.P.L, Xing, X.S, Li, R.K.Y., Xing, X.S, and Li, R.K.Y. (2007). Moisture absorption studies of sisal fibre reinforced polypropylene composites. *Comp. Sci. Technol.*; 67(2): 306-13.
13. Dhakal, H.N., Zhang Z.Y. and Richardson M.O.W. (2007). Effect of water absorption on the mechanical properties of hemp fibre reinforced unsaturated polyester composites. *Comp. Sci. Technol.*; 67(7/8): 1674-83.

- 1
2
3
4
5
6 | 14. Gregory, J.R., and Spearing, S.M. (2005). Nanoindentation of neat and in situ polymers in
7 | polymer-matrix composites. *Comp. Sci. Technol.*, 65:595-607.
8
9
10 | 15. Randall, N.X., and Harris, A. (2000). Nanoindentation as a tool for characterising the
11 | mechanical properties of tribological transfer films. *Wear*; 245(1/2): 196-203.
12
13 | 16. Farrissey, L.M., and McHugh, P.E. (2005). Determination of elastic and plastic material
14 | properties using indentation: Development of method and application to a thin surface coating.
15 | *Mat Sci Eng-A-Struct* 2005; 399: 254-66.
16
17
18 | 17. Dhakal, H.N., Zhang, Z.Y. and Richardson, M.O.W. (2006). Nanoindentation behaviour of
19 | layered silicate reinforced unsaturated polyester nanocomposites. *Polym. Test.*; 25: 846-52.
20
21 | 18. Aldousiri, B., Dhakal, H. N., Onuh, S., Zhang, Z. Y., and Bennett, N. (2011). Nanoindentation
22 | behaviour of layered silicate filled spent polyamide-12 nanocomposites. *Polym. Test.*, 30:688-
23 | 692.
24
25 | 19. Bourmaud, A., and Baley, C. (2010). Effects of thermo mechanical processing on the
26 | mechanical properties of biocomposite flax fibers evaluated by nanoindentation. *Polym. Deg.*
27 | *Stab.* 95:1488-1494.
28
29 | 20. Plastics – determination of water absorption, BS EN ISO 1999; 62:1.
30
31 | 21. Oliver, W.C., and Pharr, G.M. (1992). An improved technique for determining hardness and
32 | elastic modulus using load and displacement sensing indentation experiments, *J Mater Res* ;
33 | 7(6): 1564-83.
34
35 | 22. Espert, A., Vilaplana, F. and Karlsson, S. (2004). Comparison of water absorption in natural
36 | cellulosic fibres from wood and one year crops in polypropylene composites and its influence
37 | on their mechanical properties, *Comp. Part A.* 35:1267-1276.
38
39 | 23. Mohanty, A.K., Misra, M., & Hinrichsen, G. (2000). Biofibres, biodegradable polymers and
40 | biocomposites: An overview. *Macromolecular Materials and Engineering*, 276-277(1), 1-24.
41
42 | 24. Fakirov, S., and Bhattacharya, D. (2007). *Engineering Biopolymers: Homopolymers, Blends and*
43 | *Composites*. Auckland, New Zealand: Hanser Gardner Publications.
44
45
46
47
48
49
50
51
52
53
54

Formatted: Highlight

- 1
2
3
4
5
6 25. Tajvidi, M. and Ebrahimi, G. (2003). Water uptake and mechanical characteristics of natural
7
8 fibre polypropylene composites, J. Appl. Polym. Sci., 88:941-946.
9
10
11
12
13
14
15
16
17
18
19
20
21
22
23
24
25
26
27
28
29
30
31
32
33
34
35
36
37
38
39
40
41
42
43
44
45
46
47
48
49
50
51
52
53
54
55
56
57
58
59
60

For Peer Review

Table captions

Table 1: Moisture uptake of flax and jute biocomposites immersed in water at room temperature

Table 2: Nanoindentation results for different samples

Table 3: Flexural strength and modulus for dry and wet biocomposite samples

Table 1: Moisture uptake of flax and jute biocomposites immersed in water at room temperature

Samples	Saturation moisture uptake M_m (%)	Initial slope of plot (k) M (t) versus $t^{1/2}$	Diffusion coefficient, $D, \times 10^{-3}$ (m ² /s)
Flax biocomposite	9.61	0.303	3.71
Jute biocomposite	14.41	0.464	4.12
Glass reinforced plastic	0.99	0.033	0.70

Glass fibre data are presented for reference. Data in table are means with a sample size of 4 for each specimen group.

Table 2: Nanoindentation results for different samples

Specimens	Max depth (nm)	Plastic depth (nm)	Hardness (GPa)	Reduced Modulus (MPa)	Elastic recovery	Plastic work (nJ)	Elastic work (nJ)
Flax dry	1160.62	1009.15	0.207	4.483	0.151	2.01	0.76
	SD	SD	SD	SD	SD	SD	SD
	+/-94.51	+/-95.75	+/-0.03	+/-0.41	+/-0.017	+/-0.18	+/-0.02
Flax wet	1375.81	1236.93	0.135	3.963	0.112	2.63	0.71
	SD	SD	SD	SD	SD	SD	SD
	+/- 55.15	+/-54.78	+/-0.012	+/-0.222	+/-0.006	+/-0.149	+/-0.021
Jute dry	1562.49	1427.60	0.107	3.687	0.0974	2.58	0.70
	SD	SD	SD	SD	SD	SD	SD
	+/-185.23	+/-195.85	+/-0.034	0.767	+/-0.026	+/-0.330	+/-0.095
Jute wet	1598.79	1443.77	0.112	3.331	0.111	3.51	0.73
	SD	SD	SD	SD	SD	SD	SD
	+/-313.60	+/-303.97	+/-0.050	+/-1.073	+/-0.030	+/-0.814	+/-0.136
Glass dry *	1067.16	943.53	0.236	5.885	0.132	1.83	0.63
	SD	SD	SD	SD	SD	SD	SD
	+/-86.08	+/-88.04	+/-0.039	+/-0.556	+/-0.017	+/-0.208	+/-0.035
Glass wet *	1401.33	1267.96	0.129	4.109	0.1050	3.04	0.66
	SD	SD	SD	SD	SD	SD	SD
	+/-82.63	+/-69.97	+/-0.016	+/-0.774	+/-0.009	+/-0.166	+/-0.074

* Glass fibre samples are put for reference not for comparison.

Table 3: Flexural strength and modulus for dry and wet biocomposite samples

Specimens	Flexural strength		Reduction	Flexural modulus		Reduction
	(MPa)		(%)	(GPa)		(%)
	Dry	Wet		Dry	Wet	
Flax	102.48	61.05	40.4	3.57	1.10	69.2
Jute	111.84	44.30	60.4	4.98	1.00	80.0

Data in table are means with a sample size of 5 for each specimen group.