

Elsevier Editorial System(tm) for Earth and Planetary Science Letters

Manuscript Draft

Manuscript Number: EPSL-D-05-00905R2

Title: Analyses of shocked quartz at the global K-P boundary indicate an origin from a single, high-angle, oblique impact at Chicxulub

Article Type: Regular Article

Section/Category:

Keywords: Keywords: shocked quartz, K-P boundary, Chicxulub, obliquity of impact, impact cratering, Leg LL44 site GPC3, Ocean Drilling Program, JOIDES Resolution, Leg 198 site 1209, Leg 130 site 803D, Leg 208 site 1262, Leg 207 site 1258A.

Corresponding Author: Dr Cristiano Lana, PhD

Corresponding Author's Institution: Stellenbosch University

First Author: Joanna Morgan, PhD

Order of Authors: Joanna Morgan, PhD; Cristiano Lana, PhD; Anton Kearsley; Barry Coles; Claire Belcher, PhD; Sandro Montanari, PhD; Enrique Dias-Martinez; Antonio Barbosa, MSc; Virginio Neumann, PhD

Manuscript Region of Origin:

Abstract: The precise cause and timing of the Cretaceous-Paleocene (K-P) mass extinction 65 million years ago remains a matter of debate. Many advocate that the extinction was caused by a meteorite impact at Chicxulub, Mexico, and a number of potential kill-mechanisms have been proposed for this. Although we now have good constraints on the size of this impact and chemistry of the target rocks, estimates of its environmental consequences are hindered by a lack of knowledge about the obliquity of this impact. An oblique impact is likely to have been far more catastrophic than a sub-vertical one, because greater volumes of volatiles would have been released into the atmosphere. The principal purpose of this study was to

characterize shocked quartz within distal K-P ejecta, to investigate whether the quartz distribution carried a signature of the direction and angle of impact. Our analyses show that the total number, maximum and average size of shocked quartz grains all decrease gradually with paleodistance from Chicxulub. We do not find particularly high abundances in Pacific sites relative to Atlantic and European sites, as has been previously reported, and the size-distribution around Chicxulub is relatively symmetric. Ejecta samples at any one site display features that are indicative of a wide range of shock pressures, but the mean degree of shock increases with paleodistance. These shock- and size-distributions are both consistent with the K-P layer having been formed by a single impact at Chicxulub. One site in the South Atlantic contains quartz indicating an anomalously high average shock degree, that may be indicative of an oblique impact with an uprange direction to the southeast $\pm 45^\circ$. The apparent continuous coverage of proximal ejecta in this quadrant of the crater, however, suggests a relatively high impact angle of $> 45^\circ$. We conclude that some of the more extreme predictions of the environmental consequences of a low-angle impact at Chicxulub are probably not applicable.

Analyses of shocked quartz at the global K-P boundary indicate an origin from a single, high-angle, oblique impact at Chicxulub

Joanna Morgan¹, Cristiano Lana¹, Anton Kearsley², Barry Coles¹, Claire Belcher³, Sandro Montanari⁴, Enrique Díaz-Martínez⁵, Antonio Barbosa⁶, Virginio Neumann⁶

¹*Earth Science and Engineering, Imperial College London, South Kensington Campus, SW7 2AZ, London, UK*

²*Department of Mineralogy, The Nature History Museum, Cromwell Road, SW7 5BD, London, UK*

³*Department of Geology, Royal Holloway University of London, Egham TW20 0EX, UK*

⁴*Osservatorio Geologico di Coldigioco 62020 Frontale di Apiro, Italy*

⁵*Geological Survey of Spain (IGME), Calera 1, Tres Cantos 28760, Madrid, Spain*

⁶*Departamento de Geologia, Universidade Federal de Pernambuco, 50.740-530, Recife (PE), Brasil*

*Email: j.morgan@imperial.ac.uk; Fax: [0044 20 7594 7444](tel:00442075947444)

Abstract

The precise cause and timing of the Cretaceous-Paleocene (K-P) mass extinction 65 million years ago remains a matter of debate. Many advocate that the extinction was caused by a meteorite impact at Chicxulub, Mexico, and a number of potential kill-mechanisms have been proposed for this. Although we now have good constraints on the size of this impact and chemistry of the target rocks, estimates of its environmental consequences are hindered by a lack of knowledge about the obliquity of this impact. An oblique impact is likely to have been far more catastrophic than a sub-vertical one, because greater volumes of volatiles would have been released into the atmosphere. The principal purpose of this study was to characterize shocked quartz within distal K-P ejecta, to investigate whether the quartz distribution carried a signature of the direction and angle of impact. Our analyses show that the total number, maximum and average size of shocked quartz grains all decrease gradually with paleodistance from Chicxulub. We do not find particularly high abundances in Pacific sites relative to Atlantic and European sites, as has been previously reported, and the size-distribution around Chicxulub is relatively symmetric. Ejecta samples at any one site

display features that are indicative of a wide range of shock pressures, but the mean degree of shock increases with paleodistance. These shock- and size-distributions are both consistent with the K-P layer having been formed by a single impact at Chicxulub. One site in the South Atlantic contains quartz indicating an anomalously high average shock degree, that may be indicative of an oblique impact with an uprange direction to the southeast $\pm 45^\circ$. The apparent continuous coverage of proximal ejecta in this quadrant of the crater, however, suggests a relatively high impact angle of $> 45^\circ$. We conclude that some of the more extreme predictions of the environmental consequences of a low-angle impact at Chicxulub are probably not applicable.

Keywords: shocked quartz, K-P boundary, Chicxulub, obliquity of impact, impact cratering, Leg LL44 site GPC3, Ocean Drilling Program, JOIDES Resolution, Leg 198 site 1209, Leg 130 site 803D, Leg 208 site 1262, Leg 207 site 1258A.

1. Introduction

Alvarez et al. [1] identified an extraterrestrial signature within the K-P boundary clay layer and, following a lengthy debate, this layer is now universally agreed to have been formed by a meteorite impact. The K-P layer also contains highly shocked terrestrial minerals (quartz, feldspar and zircon) that originated from rocks at the impact site, as well as impact-derived Ni-rich spinel [2-8]. After the Chicxulub impact crater was discovered [9] numerous studies of this crater and the K-P boundary led to widespread agreement that Chicxulub was the site of a K-P boundary impact, with a few notable exceptions [10-11]. The cause of the K-P mass extinction is still contentious, and the precise role of the Chicxulub impact and Deccan volcanism remains a matter of some debate [e.g. 12-13]. The impact would have released dust and climatically active gasses into the atmosphere, and caused a period of extreme temperature change and darkness, but calculations of the nature, extent and duration of these changes differ [e.g. 14-17]. Estimates of climatic effects are dependent, in part, upon knowledge of the energy of impact, the chemistry of the target rocks, and the obliquity of impact. An oblique impact would have been much more damaging than a sub-

vertical one because the shock wave would be more focused within the near-surface, volatile-rich, sedimentary rocks, and this would cause the release of higher volumes of climatically active carbon- and sulfur-rich gasses. [17-19]. The impact size and target chemistry are now reasonably well constrained [e.g. 9, 20], but the obliquity of impact is unknown.

The best indicator of direction of impact for craters on other planetary bodies is found in the asymmetric distribution of their proximal ejecta (Fig. 1a). Highly oblique impacts (< 10 degrees) produce elliptical craters and a butterfly ejecta pattern with ejecta-free zones in the up and downrange directions. For impact angles of greater than ~15 degrees near-circular craters are produced and, for oblique impact angles up to ~45 degrees, ejecta is missing in the uprange direction [21]. Chicxulub is roughly circular [9, 20], suggesting an impact angle of > 15 degrees. Although asymmetries in the apparent crater structure have been used to estimate impact angle and direction [18, 22], the feature applied (offset of the central uplift) have been shown not to be diagnostic of impact direction for craters on Venus [23]. At Chicxulub much of the proximal ejecta is buried and, as the impact site was submerged continental shelf, is likely to have been re-distributed by tsunamis or erosion immediately or soon after impact.

During the excavation stage of cratering the so-called ejecta curtain material is ejected at particle velocities of up to ~2 kms⁻¹ to form the proximal ejecta deposits [24-25], and for Chicxulub these deposits should extend up to ~400 km from the impact site. This ejection mechanism cannot explain the presence of shocked quartz in the global K-P layer as velocities of > 9 kms⁻¹ are required to eject quartz to the other side of the planet. The only plausible explanation is that these ejecta were accelerated to high speeds within the expanding vapor plume [25]. The expanding plume would consist of a mixture of vapor, melt and clastic minerals metamorphosed at different shock pressures. However, the precise kinematics of ejection are unknown and different assumptions about the velocity/mass distribution lead to quite different final distributions of ejecta [26-27].

Observational, experimental and numerical modeling of oblique impacts all indicate that vapor plumes initially expand in the downrange direction [19, 28, 29]. Hence it appears plausible

that the shocked quartz could be ejected in an asymmetric pattern from the impact site. Previous studies of the K-P ejecta have suggested some intriguing asymmetries in the distal ejecta pattern [18, 30, 31], with shocked quartz being more abundant in sites to the west of Chicxulub [30, 31]. However, these observations are based upon data acquired by a number of groups, who have adopted different sampling and/or analytical procedures. Detailed mineralogical studies that report the absolute abundance and grain size of shocked quartz are rare [31, 32, 33], and some sites are better documented than others. Hence, it is difficult to make a quantitative assessment of asymmetries in the distribution of the distal ejecta using the existing data alone.

This paper reports the results of a new systematic study of shocked quartz from the global K-P boundary that covered a range of paleodistances and azimuths (Fig. 1b; Table 1). Observations of the grain size and degree of shock in quartz have been made using optical and scanning electron microscopy (SEM). The objective of this study was to evaluate whether the shocked quartz is asymmetrically distributed around the crater and, if so, whether that distribution offers a clue to the direction and angle of impact at Chicxulub. In contrast to previous studies, site-to-site comparisons of these new data can be made with confidence because the same protocol was used to analyze each sample.

2. Sampling and Analytical Procedures

To cover a range of paleodistances and azimuths, a number of sites in Europe, Brazil, New Zealand, North America, and the Pacific and Atlantic ocean regions were chosen for this study (Fig. 1b; Table 1). Samples were collected from a number of outcrops at each location, to investigate whether there was significant local variation in the K-P layer. In each case we attempted to sample the entire shocked quartz-bearing layer. For North American sites, the Fireball Layer and Boundary Layer (see definition in [7]) were analyzed separately. In New Zealand we sampled the 1-cm thick K-P layer, and in European sections where K-P layer thickness varies between 2 and 4 cm, we took samples from the 2-cm thick sections. Samples from the Ontong Java Plateau (ODP site 803D),

Demerara Rise (ODP site 1258A), Shatsky Rise (ODP site 1209), Walvis Ridge (ODP site 1262) and North Pacific (site GPC3) were taken from intervals where either spherules or shocked quartz had been previously identified.

Figure 1

Optical analyses were used to determine the abundance and size of shocked quartz in the bulk volume of K-P rocks in samples from all land-based locations. Quartz grains were extracted after sequential leaching of fossil, carbonate and clay mineral components (as described in Bostwick and Kyte [31]) and dry sieving of the remaining mineral separate. Analyses were carried out on grains extracted from 50 g bulk samples and then mounted into smear slides with ultra violet cement, following the methodology of Montanari and Koeberl [33]. Shocked quartz grains were identified and marked on the slides, and then counted and measured. The approximate total number of quartz (shocked and unshocked) was estimated using a subset of the prepared slides.

The identification of a K-P section in the Poty Quarry in Northeastern Brazil has been the subject of some debate ([34-37]). We have analyzed ten 50 g samples from the Poty section from locations where shocked quartz had been reported. Five samples were extracted from the base of a 20 to 50 cm thick layer of limestone breccia, where Koutsoukos [35] suggested that ~20% of the 300 quartz grains counted were shocked. The remaining samples were from the overlying layers from which Koutsoukos [35] also reported grains of shocked quartz.

SEM was used to determine the size-distribution of the smaller grains of shocked quartz from all land and marine sites, as well as to document the shock features. The mineral separates for SEM analysis were extracted from one gram of sample and attached to 1-cm diameter carbon tapes mounted on aluminum stubs. Backscattered electron imagery (BEI) and X-ray microanalysis (EDS) of shocked minerals were carried out on a JEOL JSM840 SEM with an Oxford Instruments exL Pentafet energy X-ray spectrometer (EDS) at the Natural History Museum, London. All shocked mineral grains were photographed, counted and measured, comprising a dataset of nearly 5500 shocked grains in total.

3. Results

3.1 Optical analyses

In Table 2 we show the number of shocked quartz grains observed as well as an estimate of the total number of quartz grains, and the maximum and average size for each sample. During the course of the optical analysis we noted that the shallow marine sites from Europe and New Zealand contained large amounts of unshocked quartz with grain sizes $> 60 \mu\text{m}$. The high number of unshocked quartz grains in these samples is indicative of their depositional environment in shallow marine seas (Table 1) (e.g.[38]). We sieved a number of samples from these sites to recover grains of $< 100 \mu\text{m}$ in size, to investigate whether the smaller grains of shocked quartz were also diluted by unshocked grains (bottom half of Table 2). The dilution is similar in both size ranges.

Shocked quartz is abundant in the North American fireball layer with a few thousand shocked quartz grains per 50 g sample. The maximum observed grain size in the Fireball Layer is $500 \mu\text{m}$, but the majority of shocked grains were in the size range from 100 to $200 \mu\text{m}$ (Table 2). The Boundary Claystone yielded relatively few shocked grains. As has been documented in previous optical studies (e.g., [7]), there is no substantial lateral variation in grain size from the southernmost to the northernmost K-P sites in North America. European sites have between a few and 20 shocked quartz grains per 50 g sample, and shocked quartz is relatively rare in New Zealand. The mineral separate samples of the size range $< 100 \mu\text{m}$ consistently contain more shocked quartz grains than the separates with a size range of $> 60 \mu\text{m}$ (Table 2). On average there are ~ 1.8 times more shocked quartz grains in the smaller size-range. The abundance of shocked quartz does not vary substantially between samples from the same location, with individual counts varying by less than a factor of 2. Our results are consistent with those of previous optical analyses (e.g. [7]).

Our mineral separates (~ 0.1 gram) from the limestone breccia at Poty Quarry comprise quartz (50-60 %), feldspar (40-50 %) and trace minerals ($< 1\%$) such as pyroxene, zircon and sphene. Some quartz and feldspar were intensely fractured, but we did not find a single quartz grain with planar deformation features (PDF). Some quartz grains showed more than two parallel

fracture planes, but they were widely spaced and discontinuous. It appears that Poty Quarry is not a K-P section.

3.2 SEM analyses

Results from our SEM analysis of 1g samples (Table 3) show that much larger numbers of shocked quartz are identified using the SEM than with the optical studies. For example, there is an average of 55 shocked grains within a 1g SEM sample from the bottom centimeter at three sites in Italy, whereas, in the optical analysis, the average is 10.4 grains per 50g in the size range $> 60\mu\text{m}$ and 19 grains per g for particle sizes $< 100\mu\text{m}$ (Table 2). A histogram of the size of shocked quartz grains, along with the mean at each site (Fig. 2) shows that more than 70% of the shocked grains are in the size range from 20 to 80 μm .

Shocked quartz is most abundant in samples from the southernmost sites in North America (Clear Creek North, Berwind Canyon and Madrid East South) with about 800 shocked quartz grains per 0.5 g (Table 3). The K-P sites in Canada appear to contain slightly less shocked quartz (640 to 760 shocked quartz grains per 0.5 g of sample). At the next closest site, ODP site 1258A in the South Atlantic, the number of shocked quartz grains varies between 42 and 68 per g sample from the 3 cm-thick K-P boundary interval.

Figure 2

The largest numbers of shocked quartz grains in Europe were found at the base of the clay layer in the bottom centimeter, whereas in samples from the Pacific site GPC3 the number of shocked quartz grains varies unsystematically with depth (Table 3). Samples from the ODP site 1258A, in the Atlantic, contain between 11 and 18 shocked quartz grains per g. ODP sites 803 and 1209 in the Pacific, and the site in New Zealand, contain between 2 and 11 shocked quartz grains per g of sample.

3.3 Dilution and Reproducibility

We were concerned that the large numbers of unshocked quartz at some sites may have affected our counting, as their presence could make it more difficult to identify the shocked quartz.

One sample from the bottom centimeter at Petriccio contained unusually low volumes of unshocked quartz (50-100 grains), while the other sample contained 500-1000 grains (Table 3). The number of shocked quartz grains identified in these two samples was 74 and 52 respectively. This suggests that dilution by large numbers of unshocked quartz could reduce the number of shocked quartz identified by ~40%.

The reproducibility of the methods used was tested using aliquots of the same sample. Four aliquots of a sample from Caravaca (Cara-1-2-03-2006a, -2006b, -2006c and -2006d) were separated for optical and SEM observation (Table 4a). The results from optical analysis varied from 4 to 8 grains per 50 g of sample, giving a mean of 5.5 grains and standard deviation of 2.3 grains (Table 4a). For SEM analysis a mean of 30 grains (standard deviation of 10 grains) was obtained (Table 4a). In each case, the original counts of 5 and 35 grains at Caravaca 1 (Tables 2 and 3) are within 1 standard deviation of the means derived from the aliquots.

The variation in counts from the same sample is similar to the variation between samples from the same location, with most individual counts varying by less than a factor of 2.

3.4 Shock features

Our optical and SEM analyses show that shocked quartz (Fig. 3a), are found in all sites sampled except for Poty Quarry (Tables 2-3), in accordance with previous reports on K-P sites from North America [5-7], the Pacific plate [31, 32] and Europe [8]. We have identified quartz characterized by planar fractures, PDF and shock mosaicism, which have been shown to be indicative of increasing degrees of shock pressure [39]. Most planes of PDF are sharply defined and continuous across the grain (Fig. 3a), but some are only observed around the margins of grains. Some quartz grains with more than one set of PDF are partially isotropic (Fig. 3b). SEM analysis revealed that several shocked quartz grains show evidence of internal recrystallization (Figs. 3c, d). These quartz grains appear to preserve their original shape, but are recrystallized into aggregates of 1-5 μ m wide anhedral quartz grains. The aggregates are mostly seen on broken surfaces of the

grains and are porous, similar in many aspects to the granular (strawberry) textures reported for shocked zircon in K-P samples from North America (Figs. 3c, d) (e.g., [40]).

Figure 3

In all samples we observed quartz with a range of shock features. With the aim of investigating the degree of shock at each site, we have identified all quartz grains with PDF and documented the number of PDF in every grain (Table 3). It is evident that the proportion of grains with 1, 2 or 3 PDF varies between samples.

In contrast to shocked quartz, shocked zircon is very rare in samples from Europe. We recovered six and eight shocked zircon in the size-range 40-80 μm in samples from Petriccio and Caravaca, respectively. SEM analysis indicates that the shocked zircon grains are characterized by one or multiple sets of planar features, which occur as intersecting planes with spacings of between 4 and 8 μm . Three grains displayed strawberry texture, and this texture has previously been interpreted as a product of recrystallization under high-T conditions after shock-induced amorphization [41-42]. As for zircon from North American sites (e.g., [40, 43]), the granular texture in the porous zircon from the European sites occurs beneath the original planar surface of subhedral grains (Fig. 4c). The largest zircon grains were polished to half their thickness to expose internal structures (Figs. 4 d-f). The zircon grains with multiple sets of planar features have the oscillatory zoning typical of crystallization in a felsic magma (Fig. 4e, f), but many grains have also preserved core structures. The cores and compositional zoning are best identified through cathodoluminescence imaging, but the overall poor (dark) luminescence of these grains makes unraveling of the more subtle internal structures difficult and sometimes impossible (Fig. 4f). This is particularly so for recrystallized zircon, which is characterized by extremely fine-grained crystals.

Figure 4

4. Discussion

4.1 Apparent paleodistance and azimuth

As discussed in the introduction, the only plausible mechanism for distributing shocked quartz around the globe is by their acceleration to high velocity within the expanding vapor plume. If the impact at Chicxulub had been sub-vertical, we would expect a symmetrical ejection pattern in all directions. One factor that affects the final ejecta distribution is the Earth's rotation, as sites to the west of Chicxulub move closer as the ejecta is traveling towards them. To partially remove this effect, we have calculated the flight time of ejecta with a take-off angle of 45° to each site, and used this to determine the distance and azimuth of each site from Chicxulub when the ejecta arrived. We refer to this as the apparent distance and azimuth at each site (Table 4b). For example, the Canadian sites moved ~ 300 km westwards while these ejecta were in flight, and, at the time of arrival, the site was ~ 100 km closer to Chicxulub at an azimuth of 341° .

4.2 Abundance and size-distribution of shocked quartz

It is apparent from Tables 2 and 3 that more shocked quartz grains per g were identified through SEM than optical analyses on all samples for which both methods were used. The grain size plots in Figure 2 show that more than 70% of the shocked quartz grains are smaller than $80 \mu\text{m}$, thus, a large fraction of the grains are not detectable by optical analysis. The optical and SEM results are only weakly correlated (correlation coefficient $R = 0.55$) and reflect the observed variation on a local scale within the K-P layer. The 1 g aliquots of the same sample showed a factor of 2 variation, with a minimum of 19 and maximum of 38 shocked quartz grains (Table 4a), and similar variations are found between different samples from the same location (Tables 2 and 3). These local differences may be directly related to initial variability within the plume or subsequent depositional processes, for example bioturbation and re-working would produce some vertical and lateral dispersion. Given the observed dispersion, and in order to obtain a robust estimate of the local size-distribution, we have grouped the data and determined the mean and variance for all samples that were collected reasonably close together. The new group values are indicated in the

first column of Table 4b. For site-to-site comparisons we are forced to use our SEM data, because optical analyses could only be performed at land-based sites.

Sites in North America have the largest number of shocked quartz grains with > 1400 grains per g of sample (Table 4b). Sites between 4000 and 8250 km have a few 10s of grains per g, and sites located at distances of > 9000 km have a range of between 5 and 17 grains per g. However, the shocked quartz is located in relatively thin layers in North America, Europe and New Zealand (≤ 2 cm) and over an extended interval in the Pacific sites. To measure the total abundance at each location, we have estimated the number of shocked quartz grains per unit surface area (nos/cm² in Table 4b, see caption for details). Shocked quartz at Pacific sites is more dispersed than elsewhere. Where detailed sampling has been performed across several 10s of centimeters above and below the K-P iridium peak, for example site 576B (Table 2 in Bostwick and Kyte [31]), the shocked quartz is focused within a relatively thin interval of > 3 and < 7 cm. This contrasts with the iridium anomaly at K-P sites (in the Pacific and elsewhere), which continues to be elevated outside the shocked-quartz bearing intervals for up to a few 10s of cm, and is thought to be mobilized through diffusion [44]. Thus, in determining the nos/cm² at Pacific sites, we have assumed that the majority of the shocked quartz lies within the interval that is spherule-rich and from where shocked quartz has been previously identified. We recognize that there could be small numbers of K-P shocked quartz outside these intervals, and thus that the total abundance at Pacific sites is less well constrained than at other sites.

The maximum size, average size, average number of shocked quartz grains per g, and total number of shocked quartz grains per cm² all decrease with apparent distance (Fig. 5), and this is consistent with previous K-P studies [14, 26], as well as with observations of proximal ejecta around craters on other planetary bodies [41], and terrestrial volcanic craters [42]. The maximum size and abundance per g are best fit by power laws, abundance per cm² by an exponential law, and mean size with a linear relationship (Fig. 5). In Figure 5 the solid dot is the apparent distance for

ejecta with a take-off angle of 45 degrees, and the arrow indicates the change in apparent distance before the arrival of ejecta with a take-off angle of 70 degrees.

Figure 5

Even if our estimates of nos/cm² for the Pacific are slightly underestimated, they still appear to contradict previous reports that shocked quartz is relatively abundant in the Pacific [31, 32], that led to publications on the preferential westward distribution of the Chicxulub ejecta [18, 30, 31]. Schultz and D'Hondt [18] suggested that the North Pacific was downrange of the impact, whereas Alvarez et al. [30] argued that the ejection angle and Earth's rotation produced the high abundance of shocked quartz in the Pacific. The previously reported differences between the Pacific region and Europe occur, at least in part, because shocked quartz is more readily identified using SEM. However, our counts of the number of quartz grains per g for the Pacific sites using SEM are different to those reported by Bostwick and Kyte [31]. They identified concentrations of 95 and 140 shocked quartz grains per g in samples from ODP site 803D and 577B, whereas we identified between 5 and 10 grains per g in sites at equivalent paleodistances and azimuths from Chicxulub. To verify our procedure we acquired a sample directly from one of the authors (Kyte), who provided us with 0.45 g of site GPC3 from the interval 2056-57 cm. Bostwick and Kyte [31] recovered 351 shocked quartz grains per g from this sample. We recovered 157 quartz grains from this sample, from which only 11 showed definitive evidence of shock metamorphism. This is equivalent to 24 grains per g and almost equal to our original result of 25 grains per g (Table 3). It appears that some aspect or aspects of sample preservation, sample handling, analytical techniques and mineral extraction procedures can lead to different absolute numbers of shocked quartz recovered and identified. We observe that Bostwick and Kyte's and our results are internally consistent: they both show a decrease in number of shocked grains towards the western Pacific. This forces the conclusion that individual results are protocol dependent, and that comparisons of results from unrelated studies are problematic.

4.3 Reproducibility and Dilution

Our counts have been shown to be reproducible (within a factor of 2) with our aliquot tests on the Caravaca sample (Table 4a), and through our second count of a sample from site GPC3. Hence we are confident that our results are robust enough to be used for site-to-site comparisons. In the results section, we suggested that we could be underestimating our counts for samples diluted with large numbers of unshocked quartz by ~40%. We represent the possible effect of this dilution with a vertical bar in Figure 5c: the top of the bar represents the total counted quartz if we assume an original underestimation by 40%.

4.4 Distribution of Shock level

Petrographic descriptions from impact craters show that shock metamorphism is highly heterogeneous on a small scale, and small samples of target rock commonly contain mineral phases such as quartz and zircon that display a wide range of shock metamorphic features. Thus, the range of shock features in ejecta at any one K-P site is likely to relate directly to the heterogeneous nature of the shocking process and also reflect mixing in the vapor plume prior to dispersal around the globe. However, the first ejecta incorporated within the expanding plume is, on average, the most highly shocked [24, 25], hence we might expect this to lead to a systematic change in degree of shock around the globe.

Figure 6

An indicator of the relative average degree of shock at each site has been estimated by determining the mean number of PDF in the shocked quartz grains (Table 4b). As an increasing numbers of PDF in quartz is indicative of increasing shock pressures [39], the mean number of PDF is an approximate measure of the relative shock degree at each site. A plot of this estimated shock degree (mean number of PDF in shocked quartz) against apparent distance (Fig. 6a) shows that shock degree increases away from the impact site and is best described by a linear equation. A plot of the probability density functions (as determined from the means and variances in Table 4b) for

grouped sites (Fig. 6b) shows that ODP site 1258A (shaded gray) plots to the right of all other sites. This indicates that the relative degree of shock is anomalously high at this site, and a two-tailed T test confirms this with a significance level of over 99%.

Outputs from numerical models indicate that, in the early stages of impact, the target material is subjected to the highest shock compression pressures and is ejected from the crater at the highest velocities [25]. Although the initial ejection velocity is $\leq 2 \text{ kms}^{-1}$, this highly shocked material enters the first-forming outer part of the plume, and is then rapidly accelerated to high velocities during plume expansion [24]. Thus, the highest shocked material leaves the crater with the highest velocity and ends up furthest from the impact site. This is consistent with the observed gradual increase in shock degree with apparent distance (Fig. 6a). For oblique impacts the numerical model predicts that the shock varies with direction and that, for any particular distance from the impact site, the uprange ejecta is the most highly shocked [25]. The high mean shock degree for the sample from ODP site 1258A may, thus, be indicative of the uprange direction. Also, we note that site 1262, which is further away but in the same direction (Fig. 1b), has quartz grains that are slightly more highly shocked than expected. However, the error bars on this direction are currently quite large (± 45 degrees). More observational data, as well as more numerical model runs for a range of different impact angles, are required before we can be more conclusive.

4.5 Single or Multiple impacts?

Several authors have suggested that there may have been more than one impact at the K-P boundary (e.g. [12]), and have referred to the 24-km Boltsh crater in the Ukraine which has been dated as $65.17 \pm 0.64 \text{ Ma}$ [47]. A sub-vertical impact would produce symmetric ejection from the impact site, with a gradual decrease in number and size of shocked quartz grains with paleodistance that is independent of azimuth [25]. Accepting that we have only sampled a subset of regions around the globe, the observed size and shock-distribution of quartz at the global K-P layer are consistent with this layer having been formed from a single, sub-vertical, large impact at Chicxulub.

It remains possible that impacts may have occurred around K-P times elsewhere, but unless they had been of similar magnitude to the Chicxulub event, they could not make a significant contribution to the shocked-quartz population at the global K-P boundary.

Stratigraphic interpretations of Cretaceous and Paleocene sections close to Chicxulub have recently been used to argue that the Chicxulub impact took place 300 ky prior to the K-P [10, 11]. The gradual decrease in size and total number of particles (Fig. 5), and the gradual increase in shock (Fig. 6) with paleodistance from Chicxulub, indicate that the impact that produced the K-P distal ejecta layer occurred in the same region of the globe as Chicxulub. The presence of zircon of Yucatán basement age at the distal K-P layer in Canada [45], indicate that the K-P impact occurred into rock with the same basement age as Chicxulub, and the large volume of shocked quartz in the K-P layer tell us that the impact was into continental crust. These observations are all consistent with the more widely accepted interpretation that Chicxulub is of K-P age [e.g. 9, 38], and contrasting biostratigraphical interpretations of the micropaleontological data [48].

4.6 Direction and angle of impact

As discussed in the introduction, an oblique impact at Chicxulub could have produced an asymmetrical ejection of shocked quartz from the impact site. The relatively symmetrical size- and shock-distribution of shocked quartz around the globe, appears to suggest that the impact was not particularly oblique. However, the high shock levels in quartz at ODP site 1258A could be indicative of an uprange direction to the southeast \pm 45 degrees [25]. For oblique impact angles of 15° to 45° we would expect the proximal ejecta to be missing in the uprange direction [21], but thick sequences of proximal ejecta are observed to the southeast (Belize), east (Haiti) and south of Chicxulub (southern Mexico) [e.g 38]. These combined observations suggest that the impact, if oblique, was likely to be at an angle of $>$ 45 degrees.

5. Conclusions

A large volume of material was examined from the proposed K-P boundary at Poty Quarry in Brazil. We did not find shocked quartz within these samples, and conclude that this section is unlikely to be K-P in age. This is the first systematic study of shocked quartz at many K-P sites. The size and number of shocked quartz grains decrease with apparent distance from the Chicxulub crater, and this decrease is fairly symmetric. This contradicts previous studies that proposed that shocked quartz was more abundant than expected in the Pacific, and relatively rare in Europe. We conclude that individual analyses are protocol dependent, and that a comparison between unrelated studies may have led to the incorrect interpretation that the shocked quartz distribution was asymmetric. The observed relative degree of shock increases with apparent distance, and this is consistent with predictions from numerical models. Both the size-distribution and mean shock degree are precisely as expected, if the K-P layer was formed by a single, large, sub-vertical impact at Chicxulub. This contradicts recent publications that dispute the link between Chicxulub and the K-P boundary. The anomalous mean shock level at a site to the southeast of Chicxulub indicates that the impact may have been oblique, and that this site was uprange. However, the error bars on this direction are currently quite large. The presence of thick sequences of proximal ejecta at sites to the south, southeast and east of Chicxulub indicate that, if the impact was oblique and from the southeast, the impact angle was $> 45^\circ$. Previous studies have predicted that Chicxulub produced a dramatic effect on the Earth's climate because it was formed by a low-angle oblique impact into volatile-rich sediments. Our results suggest that these more extreme predictions are unlikely.

6. Acknowledgments

This research was funded by a grant from the Leverhulme Trust. The authors would like to thank the Natural History Museum for their technical support, and in particular John Sprat, Terry Williams and Tony Willington. We also thank Finn Surlyk, University of Copenhagen, for support during sampling of the Danish site. Jan Smit and Frank Kyte are acknowledged for sharing their experience on the K-P boundary. Uwe Reimold and an anonymous reviewer are thanked for their

reviews. This research used samples provided by the Ocean Drilling Program (ODP). ODP is sponsored by the U.S. National Science Foundation (NSF) and participating countries under management of Joint Oceanographic Institutions (JOI), Inc. IARC contribution no. 2005-1135.

7. References

- [1] L. W. Alvarez, W. Alvarez, F. Asaro, H. V. Michel, Extraterrestrial cause for the Cretaceous-Tertiary extinction, *Science* 208 (1980) 1095-1108.
- [2] J. Smit, F. T. Kyte, Siderophile-rich magnetic spheroids from the Cretaceous-Tertiary boundary in Umbria, Italy, *Nature* 310 (1983) 403-405.
- [3] F. T. Kyte, J. A. Bostwick, Magnesioferrite spinel in Cretaceous-Tertiary boundary sediments of the Pacific basin: Hot, early condensates of the Chicxulub impact, *Earth and Planetary Science Letters* 132 (1995) 113-127.
- [4] F. T. Kyte, J. Smit, Regional variations in spinel compositions: An important key to the Cretaceous/Tertiary event, *Geology* 14 (1986) 485-487.
- [5] B. F. Bohor, E. E. Foord, P. J. Modreski, D. M. Triplehorn, Mineralogic evidence for an impact event at the Cretaceous-Tertiary boundary, *Science* 224 (1984) 867-869.
- [6] B. F. Bohor, Shocked quartz and more: impact signatures in Cretaceous-Tertiary boundary clays, in: V. L. Sharpton, P. D. Ward (Eds.), *Global Catastrophes in Earth History: an Interdisciplinary Conference on Impact, Volcanism and Mass Mortality*, Geological Society America Special Paper, Boulder, Colorado, 1990, pp. 335-342.
- [7] G. A. Izett, The Cretaceous/Tertiary boundary interval, Raton Basin, Colorado and New Mexico, and its content of shock-metamorphosed minerals; evidence relevant to the K-P boundary impact-extinction theory, *Geological Society America Special Paper* vol. 249, 1990, 100 pp.
- [8] A. Montanari, Authigenesis of impact spheroids in the K/T boundary clay from Italy: New constraints for high-resolution stratigraphy of terminal Cretaceous events, *Journal of Sedimentary Petrology* 61 (1991) 315-339.
- [9] A. R. Hildebrand, G. T. Penfield, D. A. Kring, M. Pilkington, A. Camargo, S. B. Jacobsen, W. V. Boynton, Chicxulub Crater: A possible Cretaceous/Tertiary boundary impact crater on the Yucatan Peninsula, Mexico, *Geology* 19 (1991) 867-871.
- [10] G. Keller, T. Adatte, W. Stinnesbeck, M. Rebolledo-Vieyra, J. Urrutia-Fucugauchi, Chicxulub impact predates the K-T boundary mass extinction, *Proceedings National Academy Science* 101 (2004) 3753-3758.
- [11] G. Keller, T. Adatte, W. Stinnesbeck, D. Stuben, Z. Berner, U. Kramar, M. Harting, More evidence that the Chicxulub impact predates the K/T mass extinction, *Meteoritics and Planetary Science* 39 (2004) 1127-1144.
- [12] G. Keller, W. Stinnesbeck, T. Adatte, D. Stuben, Multiple impacts across the Cretaceous-Tertiary boundary, *Earth Science Reviews* 62 (2003) 327-363.
- [13] V. Courtillot, J. J. Jaeger, Z. Yang, G. Feraud, C. Hofman, The influence of continental flood basalts on mass extinctions: where do we stand? in: G. Ryder, D. Fastovsky, S Gartner (Eds.), *The Cretaceous-Tertiary event and other Catastrophes in Earth History*, Geological Society of America Special Paper, Boulder, Colorado, 1996, pp. 513-525.
- [14] K. Pope, Impact dust not the cause of the Cretaceous-Tertiary mass extinction, *Geology* 30 (2002) 99-102.
- [15] J. O'Keefe, T. Ahrens, Impact production of CO₂ by the extinction bolide and the resultant heating of the Earth, *Nature* 338 (1989) 247-249.
- [16] H. Sigurdsson, S. D'Hondt, J. Carey, The impact of the Cretaceous/Tertiary bolide on evaporite terrane and generation of major sulphuric acid aerosol, *Earth and Planetary Science Letters* 109 (1992) 543-559.

- [17] E. Pierazzo, J. Melosh, D. Kring, Hydrocode simulation of the Chicxulub impact event and climatically active gases, *Journal of Geophysical Research* 103 (1998) 28607-28625.
- [18] P. H. Schultz, S. D'Hondt, Cretaceous-Tertiary impact angle and its consequences, *Geology* 24 (1996) 963-967.
- [19] P. H. Schultz, Effect of impact angle on vaporization, *Journal of Geophysical Research* 101 (1996) 21117-21136.
- [20] J. Morgan, M. Warner, J. Brittan, R. Buffler, A. Camargo, G. Christeson, P. Denton, A. Hildebrand, R. Hobbs, H. Macintyre, G. MacKenzie, P. Maguire, L. Marin, Y. Nakamura, M. Pilkington, V. Sharpton, D. Snyder, G. Suarez, A. Trejo, Size and morphology of the Chicxulub impact crater, *Nature* 390 (1997) 472-476.
- [21] P. H. Schultz, Atmospheric effects on ejecta emplacement, *Journal of Geophysical Research* 97 (1992) 11623-11662.
- [22] A. R. Hildebrand, M. Pilkington, C. Ortiz-Aleman, R. E. Chavez, J. Urrutia-Fucugauchi, M. Connors, E. Graniel-Castro, A. Camara-Zi, J. A. Halpenny, D. Niehaus, Mapping Chicxulub structure with gravity and seismic reflection data, in: M. M. Grady, R. Hutchison, G. J. H. McCall, D. A. Rothery (Eds.), *Meteorites: Flux with time and impact effects*, Geological Society London, Special Publication vol. 14, 1998, pp. 177-193.
- [23] C. Eckholm, J. Melosh, Crater features diagnostic of oblique impacts: The size and position of the central peak, *Geophysical Research Letters* 28 (2001) 623-626.
- [24] H. J. Melosh, *Impact Cratering: A geologic process*, New York, Oxford University Press, vol. 11, 1989, 245p.
- [25] J. Morgan, C. Lana, N. Artemieva, Shocked minerals in the K-T boundary: implications for the obliquity of impact (abstract), *Lunar and Planetary Science* 37 (2006) #1281.
- [26] M. Croskell, M. Warner, J. Morgan, Annealing of shocked quartz during atmospheric reentry, *Geophysical Research Letters* 29 (2002) 1940-1944.
- [27] E. Argyle, The global fallout signature of the K-P bolide impact, *Icarus* 77 (1989) 220-222.
- [28] D. Stöffler, N. A. Artemieva, E. Pierazzo, Modeling the Ries-Steinheim impact event and the formation of the moldavite strewn field, *Meteoritics and Planetary Science* 37 (2002) 1893-1907
- [29] J. Melosh, Deep impact: The first second, *Proceedings of Lunar and Planetary Science* 37 (2006) 1165.
- [30] W. Alvarez, P. Claeys, S. Kieffer, Emplacement of Cretaceous-Tertiary boundary shocked quartz from Chicxulub crater, *Science* 269 (1995) 930-935.
- [31] J. A. Bostwick, F. T. Kyte, The size and abundance of shocked quartz in Cretaceous-Tertiary boundary sediments from the Pacific basin, in: G. Ryder, S. Gartner, D. Fastovsky (Eds.), *The Cretaceous-Tertiary Event and Other Catastrophes in Earth History*, Geological Society America Special Paper, Boulder, Colorado, 1996, pp. 403-415.
- [32] L. Zhou, F. T. Kyte, B. F. Bohor, The Cretaceous/Tertiary boundary of DSDP site 596, South Pacific, *Geology* 19 (1991) 694-697.
- [33] A. Montanari, C. Koeberl, *Impact stratigraphy: The Italian record*, Heidelberg, Springer Verlag, vol. 93, 2000, 364 p.
- [34] G. A. Albertao, E. A. M. Koutsoukos, M. P. S. Regali, P. P. Martins, The Cretaceous-Tertiary Boundary in Southern low latitude regions: preliminary study in Pernambuco, northeastern Brazil, *Terra Nova* 6 (1994) 366-376.
- [35] E. A. M. Koutsoukos, An extraterrestrial impact in the early Danian: A secondary K/T boundary event, *Terra Nova* 10 (1998) 68-73.
- [36] W. Stinnesbeck, G. Keller, The Cretaceous-Tertiary boundary in southern low-latitude: preliminary study in Pernambuco, northeastern Brazil. *Comments and Reply. Terra Nova* 7 (1995) 375-382.
- [37] W. Stinnesbeck, G. Keller, K-P boundary coarse-grained siliciclastic deposits in Northwestern Mexico and Northeastern Brazil, in: G. Ryder, S. Gartner, D. Fastovsky (Eds.), *The Cretaceous-Tertiary Event and*

Other Catastrophes in Earth History, Geological Society America Special Paper Boulder, Colorado, 1996, pp. 197-210.

[38] J. Smit, The global stratigraphy of the Cretaceous-Tertiary boundary impact ejecta, *Annual Review of Earth and Planetary Science* 27 (1999) 75-91.

[39] D. Stöffler, F. Langenhorst, Shock metamorphism of quartz in nature and experiment: I. Basic observation and theory, *Meteoritics* 29 (1994) 155–181.

[40] B. F. Bohor, W. J. Betterton, T. E., Krogh, Impact-shocked zircons: Discovery of shock- induced textures reflecting increasing degrees of shock metamorphism, *Earth and Planetary Science Letters* 119 (1993) 419–424.

[41] A.M., Vickery, Variation in ejecta size with ejection velocity, *Geophysical Research Letters* 14 (1987) 726-729.

[42] <http://volcano.es.usgs.gov/ash/properties.html#size>

[43] H. Leroux, W. U., Reimold, C. Koeberl, U. Homemann, J.-C. Doukhan, Experimental shock deformation in zircon: a transmission electron microscope study, *Earth and Planetary Science Letters* 169 (1999) 291-301.

[44] C. T. Lee, G. J. Wasserburg, F. T. Kyte, Platinum group elements (PGE) and rhenium in marine sediments across the Cretaceous-Tertiary boundary: Constraints on Re-PGE transport in the marine environment, *Geochimica Cosmica Acta* 67 (2003) 655-670.

[45] T. E. Krogh, S. L. Kamo, B. F. Bohor, U-Pb ages of single shocked zircons linking distal K-P ejecta to the Chicxulub crater, *Nature* 366 (1993) 731-734.

[46] S. L. Kamo, W. U. Reimold, T. E. Krogh, W. P. Colliston, A 2.023 Ga age for the Vredefort impact event and a first report of shock metamorphosed zircon in pseudotachylitic breccias and granophyre, *Earth and Planetary Science Letters* 144 (1996) 369–388.

[47] P. S. Kelley, E. Gurov, Boltys, another end-Cretaceous impact, *Meteoritics and Planetary Science* 37 (2002) 1031-1043.

[48] I. Arenillas, J. A. Arz, J. M. Grajales-Nishimura, G. Murillo-Muñeton, W. Alvarez, A. Camargo-Zanoguera, E. Molina, C. Rosales-Domínguez, Chicxulub impact event is Cretaceous/Paleogene boundary in age: New micropaleontological evidence, *Earth and Planetary Science Letters* 119 (2006), in press.

[49] P. Claeys, C. Kiessling, W. Alvarez, Distribution of Chicxulub ejecta at the Cretaceous-Tertiary boundary, in: C. Koeberl, K.G. MacLeod (Eds.), *Catastrophic Events and Mass Extinctions: Impacts and Beyond*, Geological Society America Special Paper, Boulder, Colorado, 2002, pp. 55-68.

Figure captions

Figure 1

a) Photographs of lunar craters from Apollo 13. Arrows indicate the direction of travel of the impacting body. Highly oblique impacts produce elliptical craters and a butterfly ejecta pattern, impact angles up to ~ 45 degrees produce symmetrical craters with ejecta missing in the uprange direction [21]. Impacts of > 45 degrees show continuous ejecta deposits around the crater.

b) K-P paleogeographic map showing maximum size of shocked quartz grains as collated by Claeys et al. [49]. Locations sampled for this study are identified with a gray rectangle and numbered 1-15.

Figure 2

Grain size frequency histograms for shocked quartz grains recovered in K-P samples (see Table 1 and Fig. 1b for location), and mean grain size at each site.

Figure 3

a), c), and d) are backscattered electron images; b) was taken in cross polarized light. a) Shocked quartz with two sets of planar deformation features (PDF) from ODP Site 1258A. b) Shocked quartz with partial isotropization (dark area in the center) from Berwind Canyon, North America. c) Partly recrystallized shocked quartz, showing two sets of PDF (arrows) and porous textures from Petriccio, Italy. d) Recrystallized shocked quartz with internal porous textures from Caravaca, Spain. Porous textures are indicative of recrystallization.

Figure 4

a-e) Backscattered electron images. a) Shocked zircon with multiple sets of planar deformation features (PDF) from Caravaca, Spain. Arrows point to the most continuous and straight sets. b) Recrystallized shocked zircon, showing porous texture. Partly recrystallized shocked zircon, with preserved euhedral shape and one set of planar fractures (arrow), from Petriccio, Italy. d-e) Polished sections showing internal structure of porous d) and fractured e) textures of shocked zircon from Caravaca, Spain. f) Cathodoluminescence image of shocked zircon grain shown in e), with multiple zoning and dark luminescent core.

Figure 5

Results from SEM analyses. Can. is Canada, 1258A is ODP Leg 207 site 1258A, GPC3 is Leg LL44 site GPC3, Den. is Denmark, 1209 is ODP Leg 198 sites 1209, 803D is ODP Leg 130 site 803D, 1262 is ODP Leg 208 site 1262, NZ is New Zealand. The horizontal axis is apparent distance, which incorporates paleo-reconstruction and rotation of the Earth during transit of the

ejecta. The solid dots represent the distance from Chicxulub to the site for quartz ejected with a take-off angle of 45 degrees and traveling on a ballistic trajectory. The arrow indicates the change in distance prior to the arrival of quartz ejected at 70 degrees. The dashed line is the best-fit curve through all the data points; the corresponding equation and correlation coefficient (R) are given above the line.

a) The maximum and mean size of shocked quartz in 1 g samples of K-P boundary clay plotted against the apparent distance from Chicxulub.

b) The average number of shocked quartz found in 1 g samples of K-P boundary clay at each site, plotted against the apparent distance from Chicxulub. Vertical bars are the variance (Table 4b).

c) The total number of shocked quartz grains per unit surface area plotted against the apparent distance from Chicxulub. There is a systematic decrease in number of grains with increasing distance. The top of the vertical bar represents the count assuming a 40% underestimate of shocked quartz, for sites that might be affected by dilution with unshocked quartz (see text for more details).

Figure 6

a) The average number of PDF in shocked quartz grains from SEM analysis of 1 g samples of K-P boundary clay, plotted against the apparent distance from Chicxulub. See Figure. 5 for site abbreviations. Vertical bars are the variance (Table 4b). The dashed line is the best-fit linear equation through all data points except site 1258A; the corresponding equation and correlation coefficient are given on the graph. The mean number of PDF is a measure of the relative degree of shock at each site. The mean shock level increases with distance from Chicxulub. From the shocked quartz grains at ODP site 1258A an anomalously high mean shock level was determined.

b) Calculated probability density functions for the degree of shock at each impact site using the means and variances in Table 4b. N. Am includes all the sites from Canada and the USA; Europe includes all sites in Italy, Spain, and Denmark. Shocked quartz grains at ODP site 1258A plot to the right of all other sites, confirming their anomalously high mean shock level.

Earth Science and Engineering
Imperial College London

2.38b, RSM building
South Kensington campus
London, SW7 2AZ, UK
Tel: +44 (0)2075945423

j.morgan@imperial.ac.uk
www.es.e.ic.ac.uk

01 September 2006

Dr **Joanna Morgan** PhD

Dear Peggy

We have revised the paper taking into account the suggestions by yourself and the two reviewers; details of our responses and actions are below.

Can you clarify whether K-P is the correct name for this boundary? I noticed that a new EPSL paper by Arenillas refers to this boundary as K-Pg.

regards

Jo Morgan & Cristiano Lana

Response to your comments

We searched for sentences with the style “Something is shown in Figure/Table ...” and rephrased them as directed. [Apologies if we missed any]

We have removed ODP before occurrences of site GPC3.

We have shortened the text as requested. The length (abstract to acknowledgments) was ~6400 words and is now ~5700.

With regards to providing a better explanation on how the nos/cm² is calculated. We have added the K-P layer thickness we used to Table 4b, and details on how the calculation was performed in the Table 4b caption.

With regards to reviewer 1’s assertion that we have incorrectly underestimated the shocked quartz at Pacific sites, we disagree and include a detailed response below. The reviewer is incorrect in their suggestion that the shocked quartz is focused in the same interval as the elevated iridium – this is not true at any K-P site.

Response to Reviewer 2

Abstract

The suggested changes have all been made, except I preferred to change central to principal instead of chief, and I have not placed the “of” before ± 45 . This would have incorrectly changed the meaning of that sentence.

Introduction

The first few sentences have been altered to acknowledge the lengthy debate prior to acceptance of the K-P impact and Chicxulub. This reviewer confuses the acceptance of a K-P meteorite impact and its acceptance as the cause of the extinctions. They are two quite separate issues. Everyone agrees that there was an impact, but many paleontologists believe the extinctions were gradual and suggest multiple causes. I have added a sentence to make this clearer. Everything else has been changed as directed.

Sampling and Analytical Procedures

We have changed the text as directed.

Results

The dilution paragraph was poorly written – hopefully it is clearer now.

We have removed the sentence on pervasive isotropization

Everything else has been changed as directed.

Discussion

We have tried to improve the description of the total abundance calculation (caption, Table 4b). We did not make the suggested heading change from “Distribution of shock” to “Distribution of shocked quartz” We are discussing the distribution of the degree of shock here. We have changed this heading to “Distribution of shock level”.

We have not added references as requested because we have shortened the text here (to address the requirement to shorten the paper). In this section we have removed all the statements that this reviewer disagreed with.

We do not agree that it would have been sensible to include the unshocked quartz. There is no way of differentiating between quartz that is locally derived and unshocked quartz from Chicxulub. We have left the text as it is.

We have removed the discussion on the Boltysh crater related to it potentially being contemporaneous with Chicxulub.

Everything else in the discussion and conclusions has been altered as directed.

Response to Reviewer 1

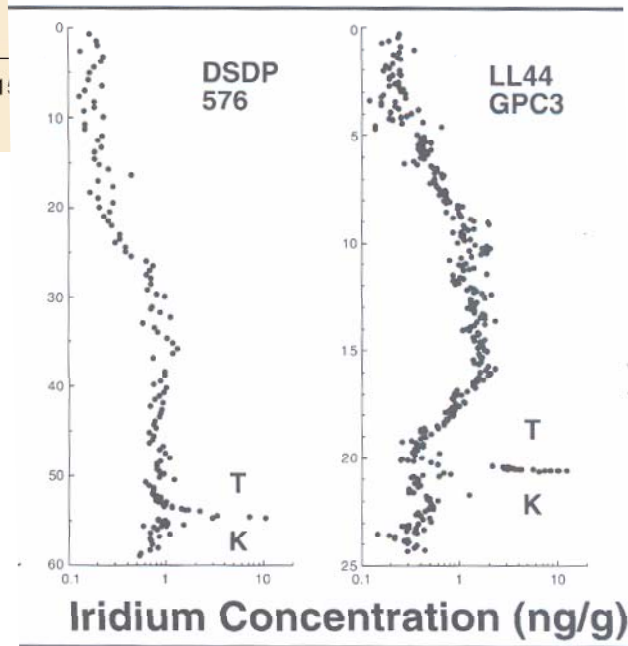
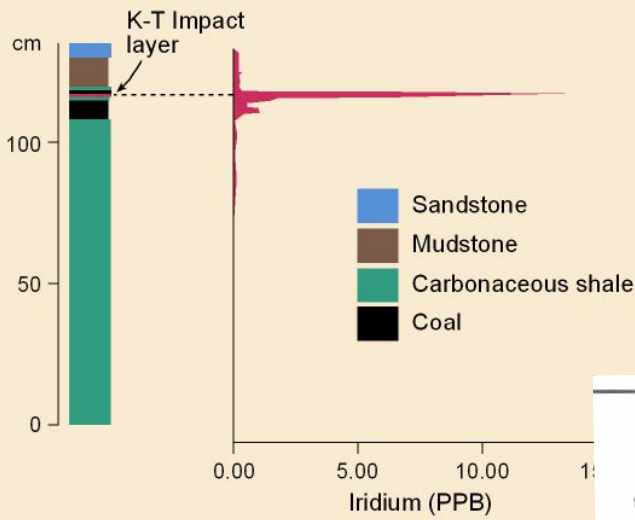
In the first figure below we show a typical plot of the K-P boundary and associated iridium concentration. Everyone agrees that the K-P fireball layer is a few mm thick at Carmel, Colorado, and that the shocked quartz is located almost entirely in this thin layer (there are small numbers within the boundary claystone). The background iridium is < 1 ppb. Anomalously high levels of iridium are found up to 10 cm below the fireball layer and extend to ~20 cm above it.

The spread of the iridium anomaly at GPC3 and other sites in the Pacific are similar to that at Carmel – see second figure below. [Note that some people plot iridium on a log scale and others on a linear. A log scale tends to make slightly elevated iridium levels around the main peak more pronounced than when plotted on a linear scale]. The reason for the spread of the anomaly is almost certainly through diffusion, and possibly an extended residence time in the ocean in marine sections [Lee, Wasseburg and Kyte, PGE in marine sediments across the K-T boundary, *Geochimica Cosmochimica Acta*, vol 67, p 655-670, 2003]. It is much easier to move the iridium than the much larger grains of shocked quartz (whatever the mechanism).

Where detailed sampling has been performed in the Pacific, for example site 576B (Table in Bostwick and Kyte [31]), the shocked quartz is focused within a relatively thin interval of > 3 and < 7 cm. (This table and the associated iridium plot are also shown below). From everything that I have read, this is typical of all K-P sites – the shocked quartz is focused in a relatively short interval and the iridium is more widely spread. In summary, there is no evidence for this reviewer's claims that the shocked quartz should occur in the same extended interval as the iridium in the Pacific, and thus that we have vastly underestimated the numbers in Pacific sites. We have added more details on the layer sampled in the first paragraph of section 2, and a discussion on the relative iridium/quartz spread in section 4.2. We have noted that there is some uncertainty on the dispersal of shocked quartz outside the sampled intervals in the Pacific sites.

With regards to the layers that this reviewer refers to as the ejecta layer (at the base) and the detrital clay layer (above), we have sampled both at all localities, including Woodside creek. We have added a few more sentences on sampling to the first paragraph in section 2. In Italy the layer (the reviewer's two layers) varies from 2 - 4 cm thick, but is mostly closer to 2 cm thick. The K-T clay thickens locally due to low strain deformation (pers. com. Montanari). We chose to sample 2-cm sections as they were more typical, and the thicker sections might have been thickened during low strain deformation caused by either soft sediment deformation or uplift sedimentary strata.

**Iridium across K-T boundary at Carmel, Colorado
(from Izett, 1990)**



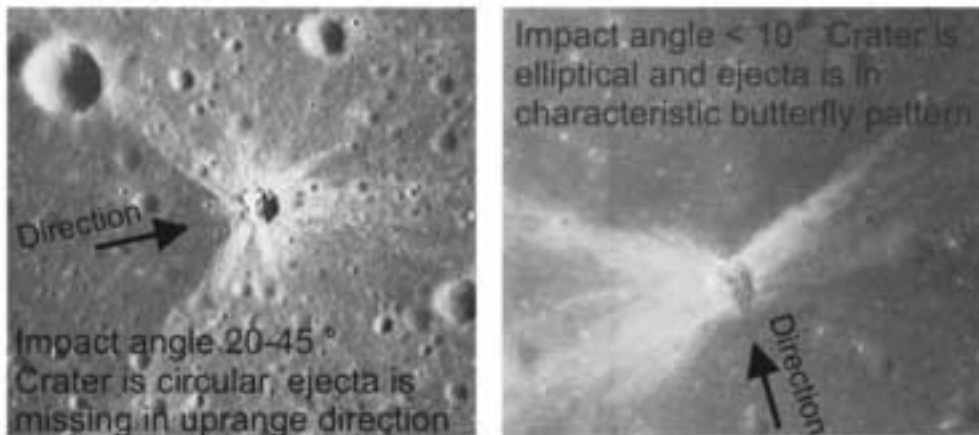
Iridium concentrations have been measured in sediments across the Cretaceous-Tertiary boundary.

TABLE 2. TRACE MINERAL CONTENT OF K/T BOUNDARY SEDIMENTS ON THE PACIFIC PLATE

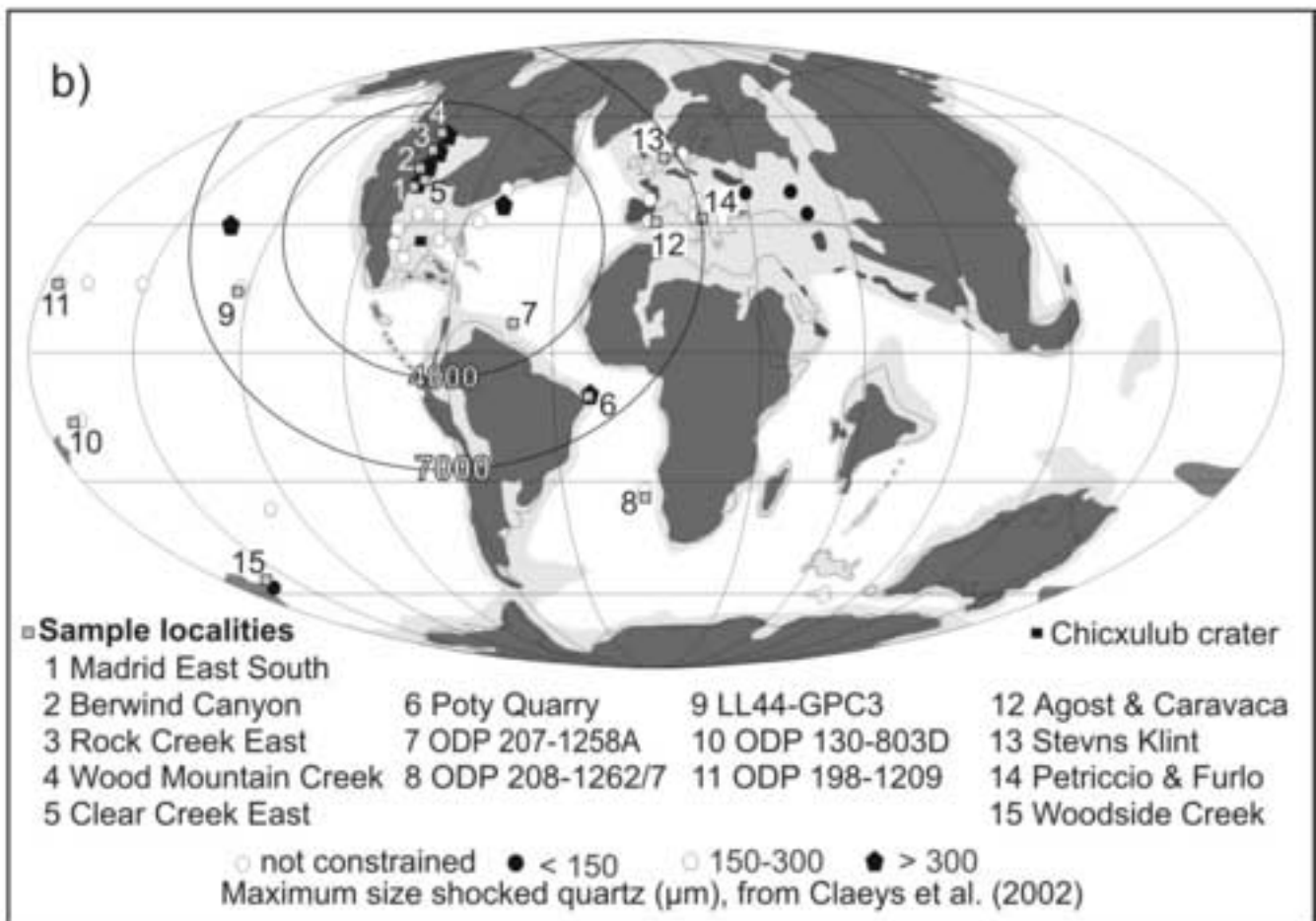
Sample	Depth (mbsf)	Dry Mass (g)	Ir (ng/g)	Nonopaque Grains	Total Quartz Grains	Quartz Grains With PDFs	Total Feldspar Grains	N
576B-6-4,	10-11 cm	53.70	0.51	5	4	0	0	
576B-6-4,	15-16 cm	53.75	0.63	21	4	0	12	
576B-6-4,	30-31 cm	53.90	0.40	13	11	0	2	
576B-6-4,	35-37 cm	53.95	0.31	36	18	5	17	
576B-6-4,	39-41 cm	53.99	0.52	264	259	167	3	
576B-6-4,	40-42 cm	54.40	0.63	13.4	254	174	4	
576B-6-4,	45-47 cm	54.05	0.41	1.5	20	4	5	
576B-6-4,	50-52 cm	54.10	0.51	1.4	6	5	0	1
576B-6-4,	56-57 cm	54.16	0.50	0.8	9	5	0	3
576B-6-4,	60-61 cm	54.20	0.71	0.8	47	35	0	10
576B-6-4,	80-81 cm	55.26	0.71	1.2	56	42	0	7
576B-6-4,	100-101 cm	55.46	0.41	0.4	30	15	0	0

Figure 1

a)



b)



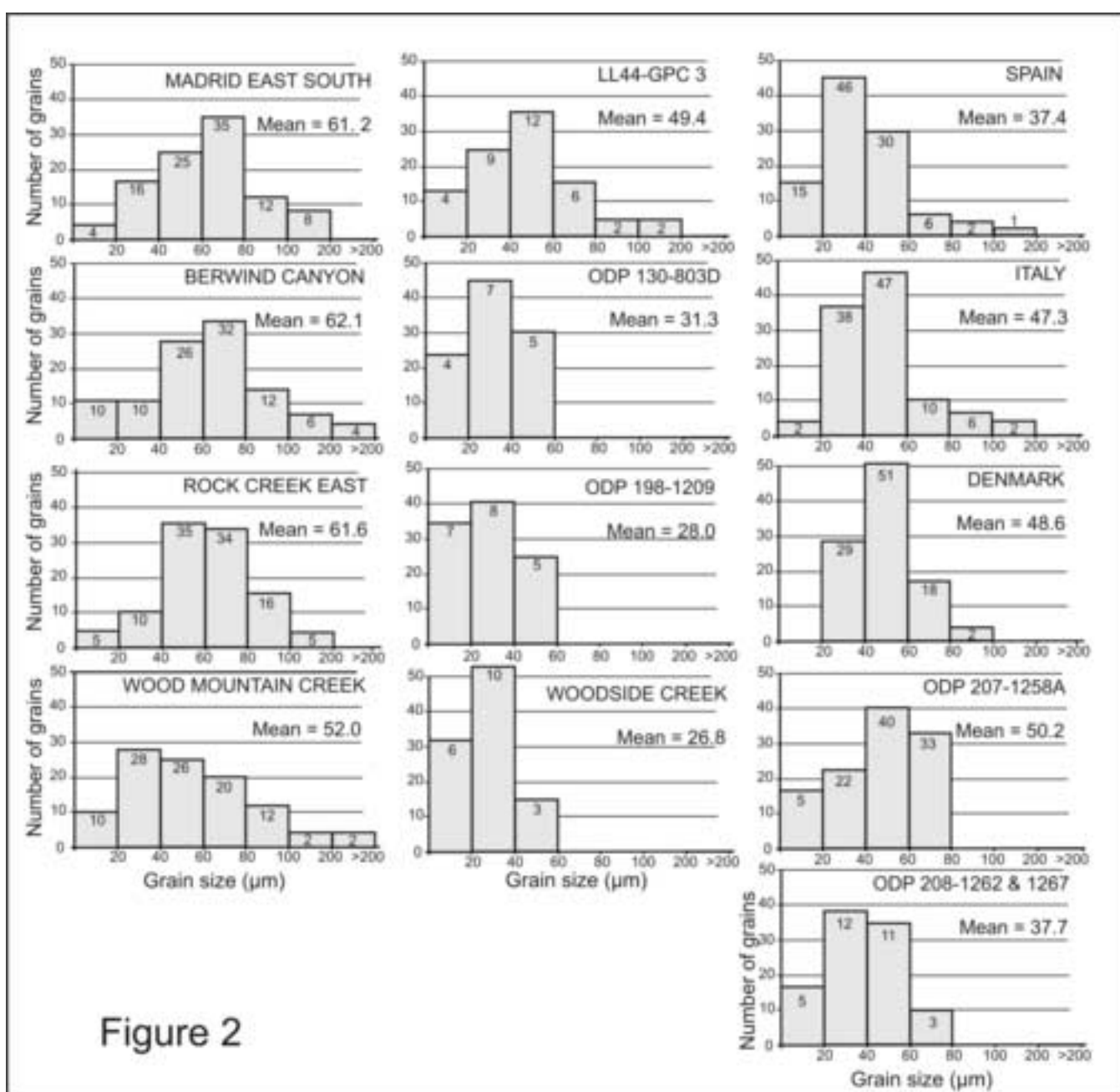


Figure 2

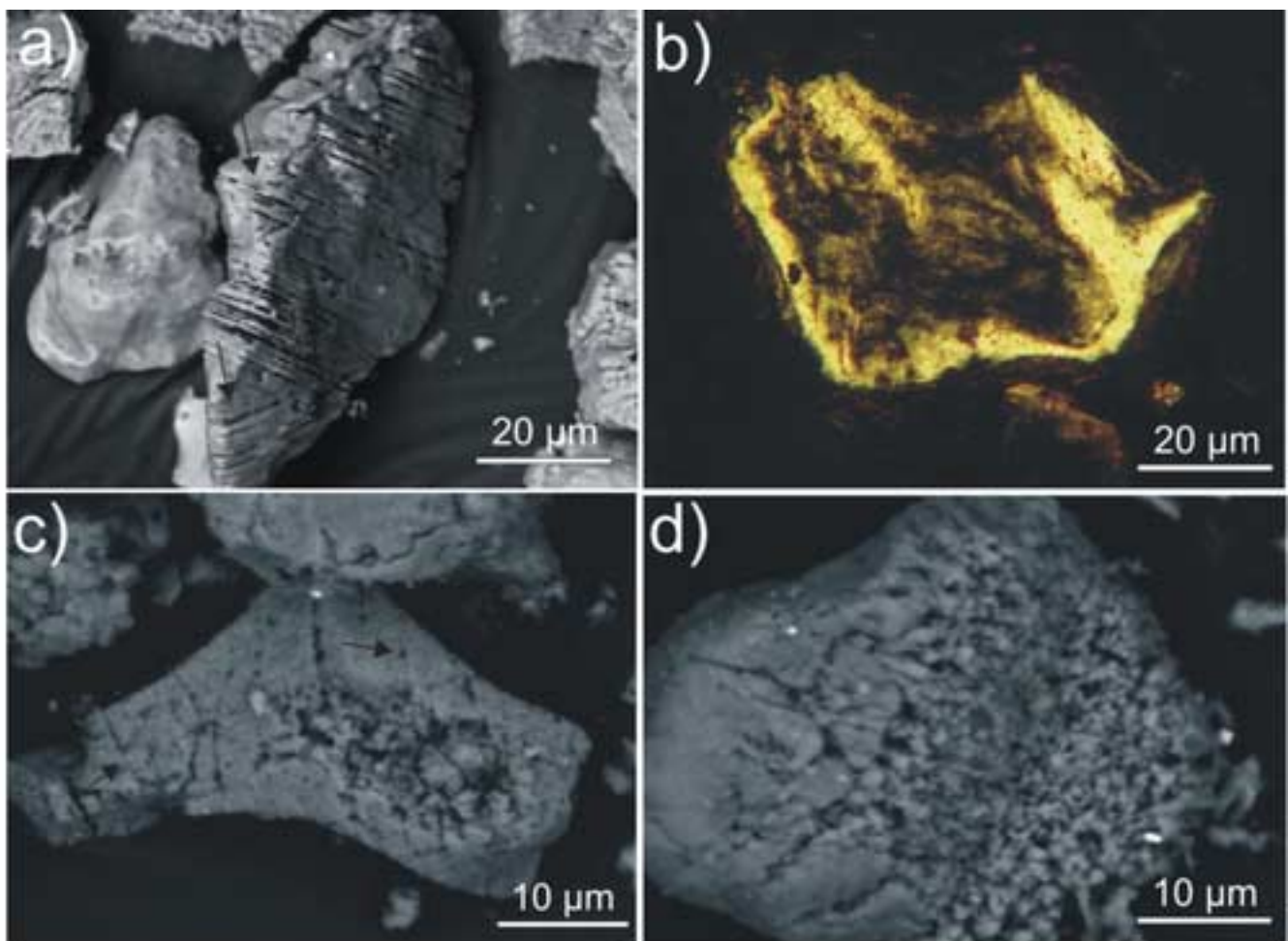


Figure 3

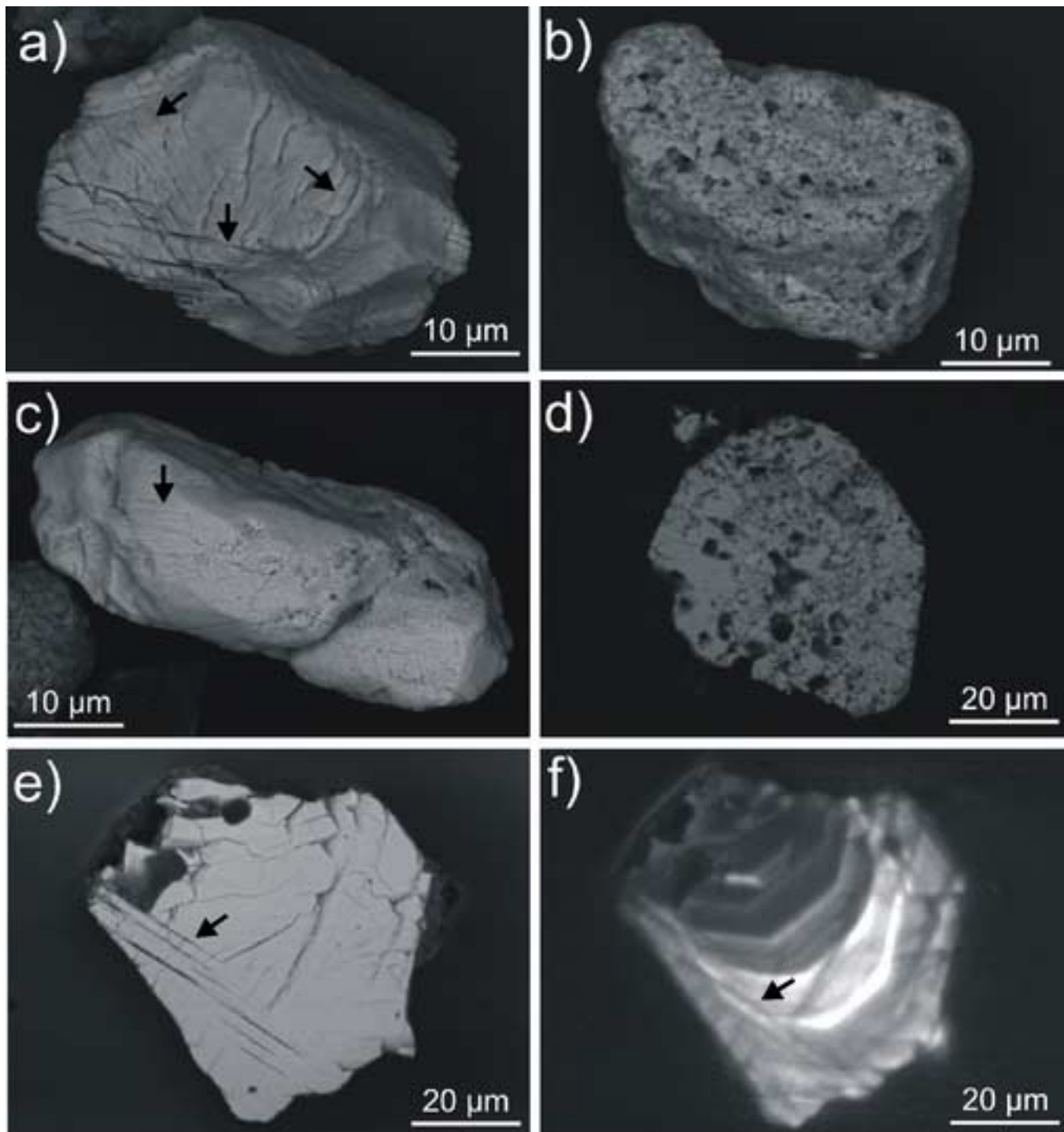
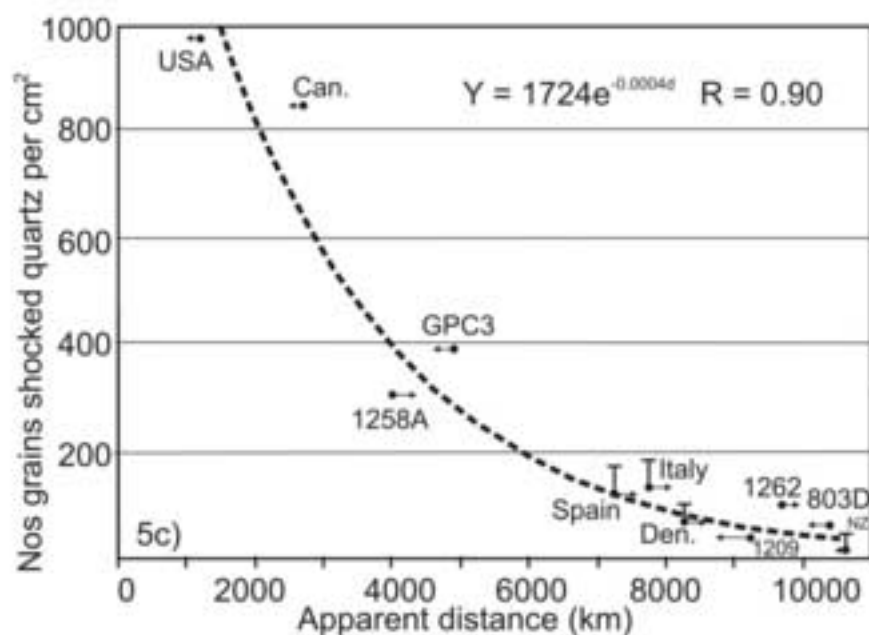
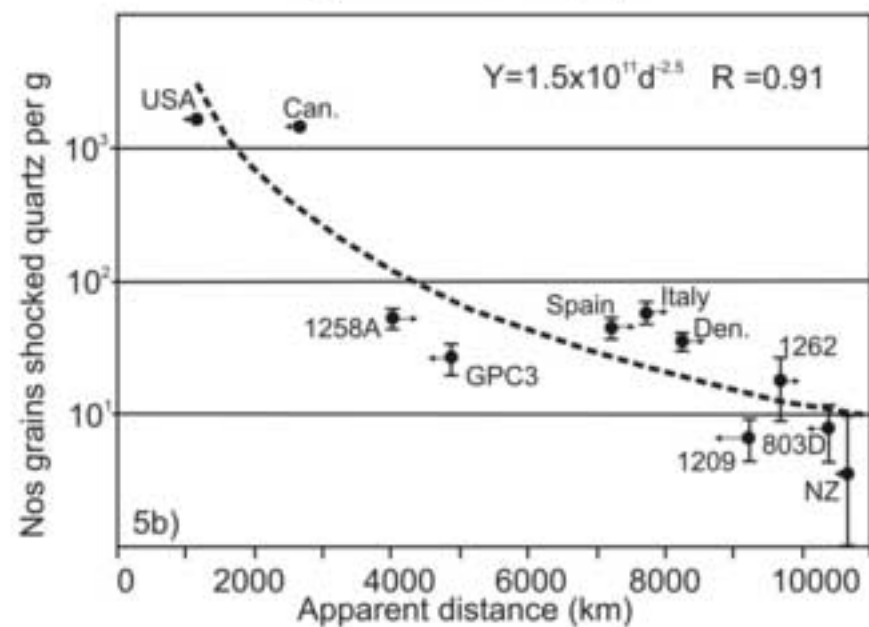
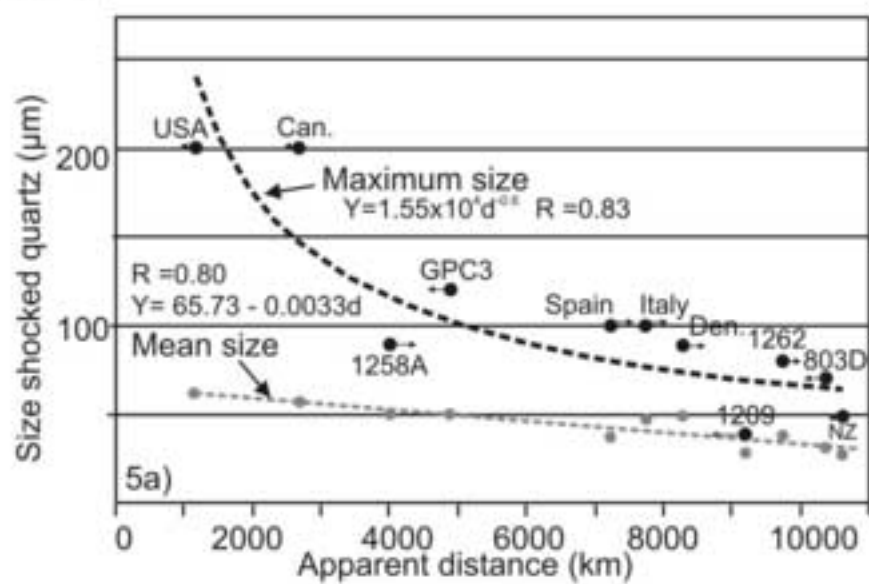


Figure 4

Figure

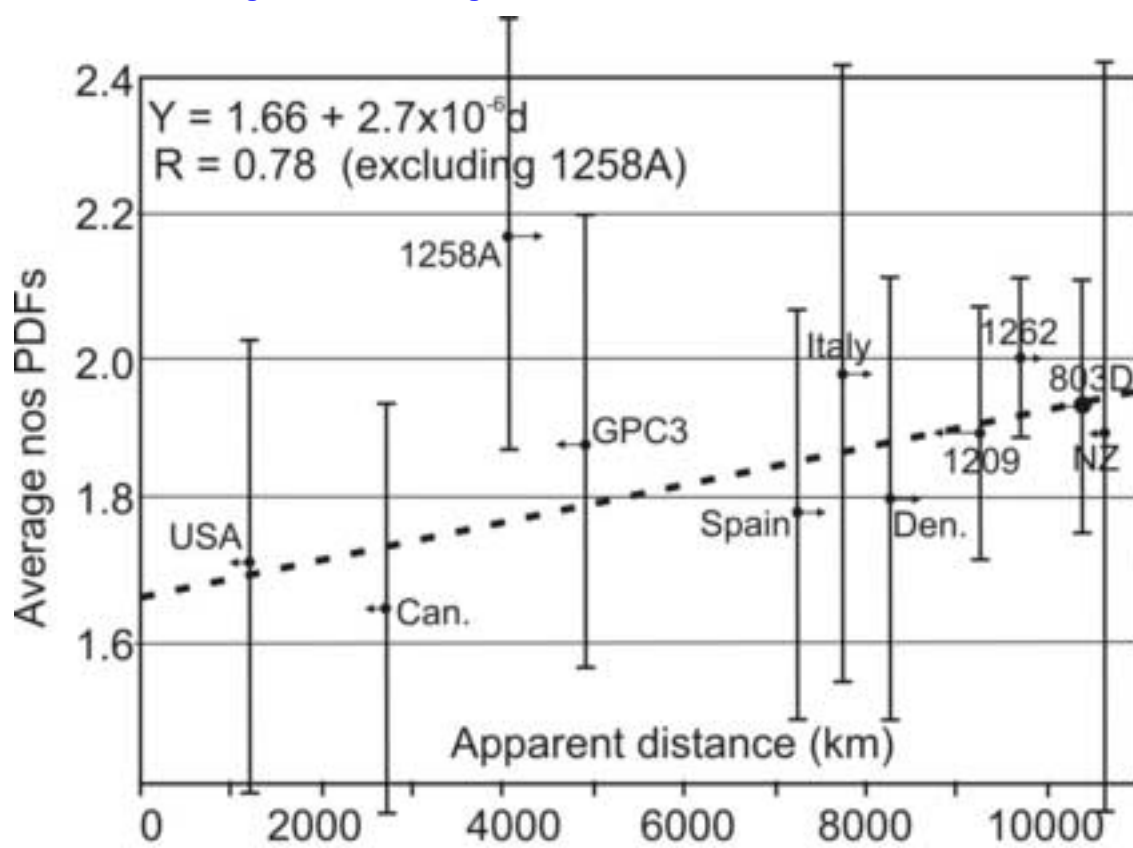
[Click here to download high resolution image](#)

Figure 5

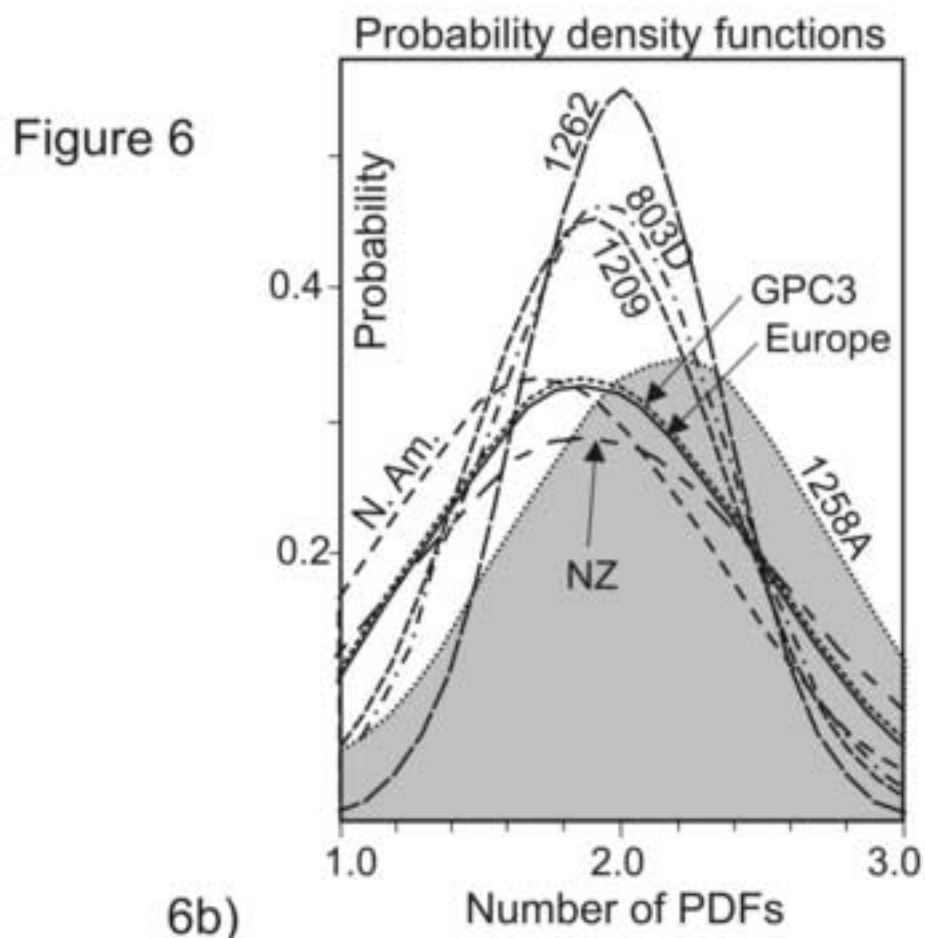


Figure

[Click here to download high resolution image](#)



6a)



6b)

Table
[Click here to download Table: newTable1.doc](#)

Location	K-T boundary sites	Distance (km)	Paleo-distance (km)	Azimuth	Depositional environment	Impact-related minerals identified
USA	Clear Creek East Berwind Canyon Madrid East South	2500	1000-1500	315	Coal-swamp deposits <20 m water depth [7]	Shocked quartz Shocked zircon
Canada	Rock Creek East Wood Mountain Creek	3800	2500-3000	335	Coal-swamp deposits <20 m water depth [7]	Shocked quartz Shocked zircon
Brazil	Poty quarry	7100	6000-6500	120	Tsunami deposit <500 m water depth [34, 35]	
Denmark	Stevns Klint	10200	7500-8000	65	Shallow marine <100 m water depth [38]	Shocked quartz Ni-rich spinel
Spain	Caravaca 1	8200	6500-7000	75	Shallow marine <500 m water depth [38]	Shocked quartz Shocked zircon Ni-rich spinel
Italy	Petriccio 1	9200	7000-7500	80	Marine <1000 m water depth [38]	Shocked quartz Shocked zircon Ni-rich spinel
New Zealand	Woodside Creek	10500	10500- 11000	195	Shallow marine <500 m water depth	Shocked quartz Ni-rich spinel
Pacific	LL44-GPC 3	7200	5000-5500	250	Deep-water marine >3000 m water depth [31]	Shocked quartz Ni-rich spinel
Pacific	ODP 198-1209	11400	9500- 10000	260	Deep-water marine >2000 m water depth [31]	Shocked quartz Ni-rich spinel Ni-rich pyroxene
Pacific	ODP 130-803 D	11600	10500- 11000	220	Deep-water marine >2000 m water depth [31]	Shocked quartz Ni-rich spinel
Atlantic	ODP 208-1262	9400	9000-9500	125	Deep-water marine >2000 m water depth	Shocked quartz Ni-rich spinel
Atlantic	ODP 207-1258A	4500	3500-4000	110	Deep-water marine >2000 m water depth	Shocked quartz

Table 1

Site locations, current distance from Chicxulub, distance from Chicxulub during the K-P, direction from Chicxulub during the K-P, depositional environment, and the impact related mineral identified in this study. See figure 1b for site locations. ODP sites are identified by their leg and site number.

Location	Site	Sample	Mass (g)	Nos quartz (estimate)	Nos shocked quartz (counted)	Max. size (µm)	Ave. Size (µm)	
Mineral separates >60 µm								
Italy	Petriccio	PTC-1-30-11-2004	50	200-300	11	120	95	
	Petriccio	PTC-2-07-03-2005	50	200-300	12	140	95	
	Petriccio	PTC-3-07-03-2005	50	300-400	9	160	110	
	Petriccio	PTC-4-08-03-2005	50	300-400	10	160	130	
	Frontale	FRO-1-30-1-2004	50	200-300	8	160	120	
	Frontale	FRO-2-07-03-2005	50	200-300	12	180	120	
Spain	Frontale	FRO-3-07-03-2005	50	100-200	11	170	120	
	Agost	AG-2-10-03-2005	50	<1000	4	140	120	
	Agost	AG-3-10-03-2005	50	<1000	6	160	110	
	Caravaca	Cara-1-11-03-2005	50	<1000	5	120	100	
	Caravaca	Cara-2-11-03-2005	50	1000-1500	5	100	77	
	Caravaca	Cara-3-11-03-2005	50	1000	6	110	90	
Denmark	Caravaca	Cara-4-11-03-2005	50	<1000	7	120	80	
	Stevns Klint	Quarry-1-09-03-2005	50	1000-2000	8	180	150	
	Stevns Klint	Quarry-2-09-03-2005	50	1000-2000	7	160	110	
	Stevns Klint	Quarry-3-09-03-2005	50	2000-3000	5	160	120	
	Stevns Klint	Quarry-4-09-03-2005	50	2000-3000	7	140	110	
	Stevns Klint	Quarry-5-09-03-2005	50	2000-3000	7	150	115	
New Zealand	Stevns Klint	DNSIQ-1-09-03-2005	50	1000-2000	4	140	90	
	Stevns Klint	DNSIQ-2-09-03-2005	50	2000-3000	8	160	90	
	Stevns Klint	DNSIQ-3-09-03-2005	50	2000-3000	9	140	90	
	Woodside Creek	NZ-1-12-10-2004	50	>5000	0	0	0	
	Woodside Creek	NZ-2-22-10-2004	50	>5000	0	0	0	
	Brazil	Poty Quarry	PT-1-Layer D-12-12-2004	50	>5000	0	0	0
Poty Quarry		PT-2-Layer D-21-01-2005	50	>5000	0	0	0	
Poty Quarry		PT-3-Layer D-25-12-2004	50	>5000	0	0	0	
Poty Quarry		PT-4-Layer D-29-12-2004	50	>5000	0	0	0	
Poty Quarry		PT-5-Layer D-03-02-2005	50	>5000	0	0	0	
Poty Quarry		PT-5-Layer D-25-12-2004	50	>5000	0	0	0	
Poty Quarry		PT-5-Layer E-25-12-2004	50	>5000	0	0	0	
Poty Quarry		PT-5-Layer F-21-01-2005	50	>5000	0	0	0	
Poty Quarry		PT-5-Layer G-21-01-2005	50	>5000	0	0	0	
Poty Quarry		PT-5-Layer H-03-02-2005	50	>5000	0	0	0	
Poty Quarry		PT-5-Layer I-03-02-2005	50	>5000	0	0	0	
USA		Raton Basin	RAT-7-12-04-2004 / Fireball layer	50	4000-6000	5000 (**)	500	200
		Raton Basin	RAT-8-12-04-2004 / Boundary Claystone	50	100-200	14	80	80
	Berwind Canyon	BC-9-04-2005 / Fireball layer	50	4000-6000	4000 (**)	450	150	
	Berwind Canyon	BC-12-04-2005 / Boundary Claystone	50	100-200	12	90	80	
	Berwind Canyon	BC-11-04-2005 / Boundary Claystone	50	100-200	12	80	80	
	Madrid East South	MES 7-12-04-2005 / Boundary Claystone	50	100-200	16	70	70	
Canada	Madrid East South	MES 6-12-04-2005 / Fireball Layer	50	4000-6000	5000 (**)	300	100	
	Rock Creek East	RCE8-12-04-2005 / Boundary Claystone	50	400	20	80	60	
	Rock Creek East	RCE6-12-04-2005 / Fireball Layer	50	4000-6000	4000 (**)	200	100	
	Rock Creek East	RCE7-12-04-2005 / Boundray Claystone	50	400	12	80	80	
	Wood Mountain Creek	WMC-12-04-2005 / Fireball Layer	50	4000-6000	4000 (**)	200	80	
	Mineral separates <100 µm							
Italy	Petriccio	PTC-5-7-06-2005	50	300-400	19	90	60	
	Frontale	FOR - 07-06-2005	50	300-400	18	90	60	
	Frontale	FOR - 07-06-2005	50	500-600	20	70	50	
Spain	Agost	AG-1-10-03-2005	50	<1000	12	100	90	
	Agost	AG-4-10-03-2005	50	<2000	11	100	90	
	Agost	AG-5-10-03-2005	50	<2000	16	80	50	
	Caravaca	Cara-6-11-03-2005	50	1000-2000	11	50	40	
	Caravaca	Cara - 7 07-06-2005	50	1000-2000	11	80	50	
	Caravaca	Cara-1-11-03-2005	50	1000-2000	20	90	50	
Denmark	Caravaca	Cara-5-11-03-2005	50	<1000	6	90	80	
	Stevns Klint	DNSIQ-4-09-03-2005	50	2000-3000	19	90	50	
New Zealand	Stevns Klint	DNSIQ-5-10-03-2005	50	2000-3000	20	90	50	
	Woodside Creek	NZ-1-10-03-2004	50	>3000	2	50	45	
	Woodside Creek	NZ-2-10-03-2004	50	>3000	3	40	35	
	Woodside Creek	NZ-3-10-03-2004	50	>3000	2	50	45	
	Woodside Creek	NZ-4-10-03-2004	50	>3000	4	100	75	

(**) estimated

Table 2

Optical analyses on mineral separates from land-based sites. Samples are named by their location and date of analysis. The total number of quartz grains has been estimated, whereas the number of shocked quartz grains have been carefully counted. The mean size is calculated using all identified shocked quartz grains, except for North American samples for which 100 grains were used to calculate the mean.

Location	Site	Mass (g)	Location (cm)	Nos of quartz (estimated)	Nos shock. quartz (counted)	Max. size (μm)	Ave. size (μm)	1 Set of PDF (%)	2 Sets of PDF (%)	3 Sets (%)
Pacific	ODP 198-1209	1	85-86	20-50	8	20	20	25	75	0
Pacific	ODP 198-1209	1	84-85	20-50	5	40	20	20	60	20
Pacific	ODP 198-1209	1	83-84	20-50	7	30	20	0	100	0
Pacific	LL44-GPC 3	1	2051-52	40-70	0	0	0			
Pacific	LL44-GPC 3	1	2052-53	40-70	22	90	50	22.7	54.6	22.7
Pacific	LL44-GPC 3	1	2053-54	40-70	14	120	6	14.2	85.8	0
Pacific	LL44-GPC 3	1	2054-55	50-100	33	70	50	24.2	57.6	18.2
Pacific	LL44-GPC 3	1	2056-57	50-100	25	80	60	24	68	8
Pacific	LL44-GPC 3	1	2058-59	50-100	45	80	50	29	60	11
Pacific	LL44-GPC 3	1	2059-60	40-70	0	0	0			
Pacific	ODP 130-803 D	1	60-62	100	6	70	40	16.6	66.8	16.6
Pacific	ODP 130-803 D	1	62-64	100	10	50	40	10	90	0
Atlantic	ODP 208-1262	1	78.5-81.5	100-200	11	80	50	9	82	9
Atlantic	ODP 208-1262	1	78.5-81.5	100-200	23	80	50	4.3	91.4	4.3
Atlantic	ODP 207-1258 A	1	91.0-94.0	50-100	44	90	40	9	82	9
Atlantic	ODP 207-1258 A	1	91.0-94.0	50-100	42	70	40	9.5	50	40.5
Atlantic	ODP 207-1258 A	1	91.0-94.0	50-100	68	90	50	10.2	60.4	69.4
Spain	Caravaca 1	1	bottom cm	500-1000	35	70	40	23	69	7.7
Spain	Caravaca 2	1	bottom cm	500-1000	52	110	45	40	51.4	8.6
Spain	Caravaca 3	1	top cm	500-1000	16	110	45			
Italy	Petriccio 1	1	bottom cm	50-100	74	80	40	32.4	50	17.6
Italy	Petriccio 2	1	bottom cm	500-1000	52	80	50	11.5	67.3	21.2
Italy	Petriccio 3	1	top cm	500-1000	12	100	50			
Italy	Frontale 1	1	bottom cm	500-1000	39	110	50	20.5	51	28.2
Denmark	Stevns Klint 1	1	bottom cm	2000-3000	29	90	60	17.3	82.7	0
Denmark	Stevns Klint 2	1	bottom cm	2000-3000	33	80	60	27.7	39.6	3
Denmark	Stevns Klint 3	1	top cm	2000-3000	0	0	0			
Denmark	Stevns Klint 4	1	top cm	2000-3000	6	90	60			
New Zealand	Woodside Creek 1	2	bottom cm	2000-3000	11	50	40	54	36	0
New Zealand	Woodside Creek 2	2	bottom cm	2000-3000	8	30	25	25	75	0
New Zealand	Woodside Creek 3	2	bottom cm	2000-3000	5	40	30	20	60	20
New Zealand	Woodside Creek 4	2	bottom cm	2000-3000	16	40	30	18.8	37.5	43.7
New Mexico**	Clear Creek East	0.5	0.3 cm	>1000	800	200	80*	31*	55*	14*
Colorado**	Berwind Canion	0.5	0.3 cm	>1000	794	200	75*	38*	48*	14*
Colorado**	Madrid East South	0.5	0.3 cm	>1000	840	120	60*	34*	62*	4*
Canada**	Rock Creek East	0.5	0.3 cm	>1000	640	150	80*	32*	64*	4*
Canada**	Rock Creek East	0.5	0.3 cm	>1000	720	200	70*	44*	51*	5*
Canada**	Wood Mountain Creek	0.5	0.3 cm	>1000	760	200	65*	44*	50*	6*

(*) average of 100 grains

(**) Fireball Layer only

Table 3

Results from SEM analyses. The location column indicates sampling depth at ODP sites, bottom or top centimeter at European sites, the entire 1-cm thick K-P layer in New Zealand, and layer thickness at North American sites. The number of quartz grains is estimated, whereas the number of shocked quartz are carefully counted. The average size is for all shocked quartz in the sample, except for North American sites for which the average is based upon 100 measured grains. Similarly, the number of PDF in each quartz grain is for all shocked quartz grains in a sample, except for North American sites for which the values are determined from 100 quartz grains.

Sample	Weight (g)	Number of shocked quartz
Optical analysis		
Cara-1-2-03-2006a	50	4
Cara-1-2-03-2006b	50	7
Cara-1-2-03-2006c	50	8
Cara-1-2-03-2006d	50	3
Average		5.5
Standard deviation		2.3
Scanning electron microscopy analysis		
Cara-1-2-03-2006a	1	37
Cara-1-2-03-2006b	1	24
Cara-1-2-03-2006c	1	38
Cara-1-2-03-2006d	1	19
Average		29.5
Standard deviation		9.5

Table 4a

Results from four aliquots of the same sample from Caravaca Spain.

Location	Apparent Distance	Apparent Azimuth	Nos /g		Mean size (μm)	Int. (cm)	Nos/cm ²	Nos PDF	
			Mean	Variance				Mean	Variance
USA	1150	323	1623	25	62	0.3	973	1.71	0.37
Canada	2650	341	1413	61	57	0.3	848	1.65	0.33
ODP 207-1258A	4000	108	51	15	50	3	307	2.17	0.34
LL44-GPC3	4850	250	28	12	50	7	390	1.88	0.36
Spain	7200	76	44	12	37	2	119	1.78	0.33
Italy	7700	81	55	18	47	2	134	1.98	0.44
Denmark	8250	67	34	5	49	2	68	1.8	0.26
ODP 198-1209	9200	260	7	2	28	3	40	1.9	0.19
ODP 208-1262	9700	123	17	9	38	3	102	2	0.12
ODP 130-803D	10350	218	8	3	31	4	64	1.94	0.18
New Zealand	10600	191	5	5	27	1	10	1.9	0.49

Table 4b

Summary of results from the SEM analyses. The apparent distance and azimuth incorporate paleo-reconstruction, and rotation of the Earth during transit of material ejected at 45 degrees and traveling on a ballistic path. Nos/g is the mean number of shocked quartz grains per g, and is determined by averaging all samples at the specified location. Nos/cm² is the number of shocked quartz grains per unit area of the Earth's surface, and is determined using the mean number of shocked quartz grains in each sampled layer (Table 3), summing each layer across the entire K-P interval from which shocked quartz has been extracted (Int. in table above), and using a density of 2 gcm³. For example, in Italy the layer thickness is 2 cm, and the mean number of grains per g are 55 and 12 in the bottom and top cm respectively. Hence, in a volume that is 1 cm² by 2 cm deep (mass 4g), the nos/cm² is 67 x 2 = 134. SEM analyses were not performed on the boundary claystone from USA and Canada, hence Int. at these sites is for the fireball layer only. If the boundary claystone were included we estimate that the nos/cm² would increase by 50-100 grains at each of these two locations. The mean number of PDF is determined from the last three columns in Table 3.