

Spin Polarization and Attosecond Time Delay in Photoemission from Spin Degenerate States of Solids

Mauro Fanciulli,^{1,2,*} Henrieta Volfová,³ Stefan Muff,^{1,2} Jürgen Braun,³ Hubert Ebert,³ Jan Minár,^{4,3} Ulrich Heinzmann,⁵ and J. Hugo Dil^{1,2}

¹*Institut de Physique, École Polytechnique Fédérale de Lausanne, CH-1015 Lausanne, Switzerland*

²*Swiss Light Source, Paul Scherrer Institut, CH-5232 Villigen, Switzerland*

³*Department of Chemistry, Ludwig Maximilian University, D-81377 Munich, Germany*

⁴*New Technologies-Research Center, University of West Bohemia, CZ-30614 Pilsen, Czech Republic*

⁵*Faculty of Physics, University of Bielefeld, D-33501 Bielefeld, Germany*

(Received 24 December 2015; revised manuscript received 20 September 2016; published 10 February 2017)

After photon absorption, electrons from a dispersive band of a solid require a finite time in the photoemission process before being photoemitted as free particles, in line with recent attosecond-resolved photoemission experiments. According to the Eisenbud-Wigner-Smith model, the time delay is due to a phase shift of different transitions that occur in the process. Such a phase shift is also at the origin of the angular dependent spin polarization of the photoelectron beam, observable in spin degenerate systems without angular momentum transfer by the incident photon. We propose a semiquantitative model which permits us to relate spin and time scales in photoemission from condensed matter targets and to better understand spin- and angle-resolved photoemission spectroscopy (SARPES) experiments on spin degenerate systems. We also present the first experimental determination by SARPES of this time delay in a dispersive band, which is found to be greater than 26 as for electrons emitted from the *sp*-bulk band of the model system Cu(111).

DOI: [10.1103/PhysRevLett.118.067402](https://doi.org/10.1103/PhysRevLett.118.067402)

Photoemission has been at the core of condensed matter physics studies for more than one century, both as a basic physical process and as a platform for spectroscopic techniques [1]. Whereas enormous advances in the understanding of kinematics and energetics of the process have been achieved, other aspects such as the spin polarization of the photoelectrons and the time scale are yet to be explored in more detail. For instance, the low-efficiency measurement of the spin polarization has restricted the focus mainly on spin polarized electronic states, as in ferromagnets or spin-momentum locked systems, even though several interesting spin interference processes can take place in photoemission from spin degenerate states [2]. As for the time scale, the common assumption is an instantaneous excitation and emission of the electron. However, recent measurements of finite time delays between electrons photoemitted from different electronic bands give results in the attosecond domain [3–7].

A complete description of the photoemission process in condensed matter must include the combination of all the relevant transitions occurring after photon absorption. In atoms, for example, an electron from an initial state with orbital quantum number ℓ is allowed by selection rules to make the two degenerate transitions $\ell \rightarrow \ell \pm 1$. Whereas the orbital quantum number alone is not sufficient to fully describe the transition of electrons from a dispersive band in a solid, one can still consider (at least) two different transitions corresponding to different single-group

symmetry spatial parts of the particular double-group symmetry that describes the initial state [8]. The interference of the complex matrix elements describing each transition determines the final state photoelectron wave function, and, in particular, its phase.

We consider two generic transitions, T_1 and T_2 , with a respective phase shift ϕ , as pictured in Fig. 1(a). In the frame of the Eisenbud-Wigner-Smith (EWS) model [9,10], such a phase shift corresponds to a time delay between the two transitions according to

$$\tau_{\text{EWS}} = \hbar \frac{\partial \phi}{\partial E_k}, \quad (1)$$

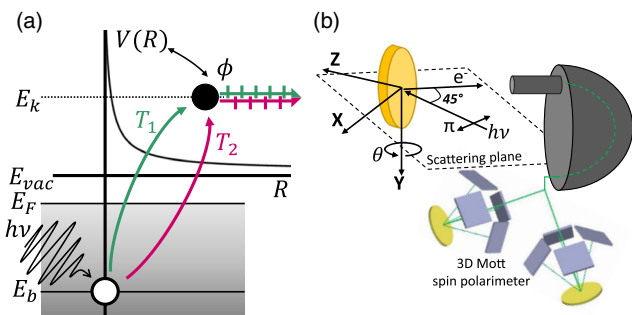


FIG. 1. (a) Two phase-shifted transitions interfere in the photoemission process to build up the photoelectron wave function. (b) Experimental setup with relevant geometry. The given coordinate system is in the sample frame.

where the derivative is taken with respect to the kinetic energy of the photoelectron. The original EWS model was developed for particles scattered by a short-range potential, where the phase shift is between the incoming and outgoing particles, and τ_{EWS} is interpreted as a “sticking” time in the interaction potential region. A logarithmic correction to the phase shift can then be introduced to deal with Coulomb-like long-range potentials [11]. In order to use the concept of τ_{EWS} in the photoemission context and obtain Eq. (1), the excited photoelectron is compared to the one that would be “half-scattered” by its surrounding potential [12]. The physical meaning of τ_{EWS} will be discussed later.

The model proposed here permits us to exploit the capabilities of spin- and angle-resolved photoemission spectroscopy (SARPES) on nonmagnetic systems [13], in order to access the phase information and thus extract the photoemission time delay in a solid by measuring the spin polarization of photoelectrons emitted from a spin degenerate initial state maintaining full energy and angular resolution. Using the Cu(111) *sp* bulk band as a model system we will present the first experimental determination of an estimate for the time delay via the spin polarization in a dispersive band.

In photoionization of atoms by means of linearly polarized light, the photoelectrons show a spin polarization $\mathbf{P} = P\hat{\mathbf{n}}$ because of the interference between the two transitions $T_{1,2}$, in analogy with electron scattering formalism [14,15]. In particular, the spin polarization is a function of the angle γ between the electric field of the incident light and the photoelectron momentum and is aligned along $\hat{\mathbf{n}}$, the perpendicular to the reaction plane defined in the atomic case by these two vectors [14]. At fixed geometry P is related to the atomic levels considered and to two dynamical parameters that are a function of the ratio $r = R_2/R_1$ of the radial part of the matrix elements $M_{1,2} = R_{1,2}e^{i\phi_{1,2}}$ of the two transitions $T_{1,2}$ and of their phase shift $\phi = \phi_2 - \phi_1$ [14,16–18]. In the more complicated case of molecules, it has been calculated that the direction $\hat{\mathbf{n}}$ can change since the symmetry of the molecule becomes relevant as well [19]. In solids, it has been discussed how the spin polarization orientation is indicative of the symmetry of the bands probed by the E field [8,20–22]. The degree of polarization is evaluated as [23]

$$P = I_{\text{tot}}^{-1}(\mathbf{\Omega})f(\mathbf{\Omega})\text{Im}[M_1M_2^*](r, \phi), \quad (2)$$

where f is a geometrical correction that takes into account all the relevant angles $\mathbf{\Omega}$, and I_{tot} is the photoemission total intensity [24]. The symmetry of the probed bands here determines $\hat{\mathbf{n}}$. In photoionization of atoms the kinetic energy E_k of the electron can only be changed by changing the photon energy $h\nu$. In solid state targets this implies a change in momentum k_z of the probed dispersive state. However, a major advantage of dispersive states is that E_k

can also be varied by changing the binding energy E_b for fixed $h\nu$.

In order to access the time delay we calculate the derivative of the measured P with respect to the binding energy (indicated by a dot) over the band considered, and multiply by \hbar :

$$\hbar\dot{P} = \hbar\frac{\partial P}{\partial r}\dot{r} + \hbar\frac{\partial P}{\partial \phi}\dot{\phi}, \quad (3)$$

where we do not consider the term $\partial P/\partial \mathbf{\Omega}$ since it is negligibly small [24]. This equation shows that a variation of P with E_b is due to a time delay [$\dot{\phi}$, according to Eq. (1)], but also, in general, to a change of the matrix elements ratio within the band (\dot{r}). By rearranging Eq. (3), the time delay is given by

$$\tau_{\text{EWS}} = \frac{-\hbar}{\partial P/\partial \phi}(\dot{P} - \dot{r}\partial P/\partial r). \quad (4)$$

We now assume that within a small E_b range the double group symmetry does not vary along a given reciprocal space direction ($\dot{r} \approx 0$). This assumption is supported *a posteriori* by the fact that I_{tot} does not sensibly vary within the E_b range considered. This means that only the phase shift of the matrix elements will vary, so that by measuring \dot{P} we can estimate a finite time delay

$$|\tau_{\text{EWS}}| > c|\dot{P}|, \quad (5)$$

with $c = \hbar/\max|\partial P/\partial \phi|$. The evaluation of the coefficient c , the influence of additional spurious effects, an estimate of the upper limit for $|\tau_{\text{EWS}}|$, and the analysis of corrections to the estimate when $\dot{r} \neq 0$ are reported in Ref. [24].

Our SARPES experiments were performed at the COPHEE end station [31,32] at the Swiss Light Source. We characterized the spin polarization of the *sp* bulk-derived conduction band (CB) of Cu(111) at room temperature with momentum distribution curves (MDCs) obtained by scanning the angle θ shown in the sketch of the experimental setup in Fig. 1(b). The sample was aligned with the $\Gamma\bar{K}$ direction along k_x by means of Low Energy Electron Diffraction (LEED) and Fermi surface maps. The sample quality was checked by LEED and by measuring $E_b \approx 440$ meV for the bottom of the surface state [33], which shows only a Rashba-type spin splitting [24] without impurity scattering induced spin interference effects [34].

In order to maximize the counts of the spin-resolved measurements, optimal photon energies have been chosen after a $h\nu$ scan, shown in Fig. 2(a). Local maxima in intensity were found at 46 and 130 eV. A band map for $h\nu = 130$ eV is reported in Fig. 2(b), which does not show relevant changes in intensity. Solid lines indicate the binding energies where spin-resolved MDCs have been measured. The CB under consideration displays a

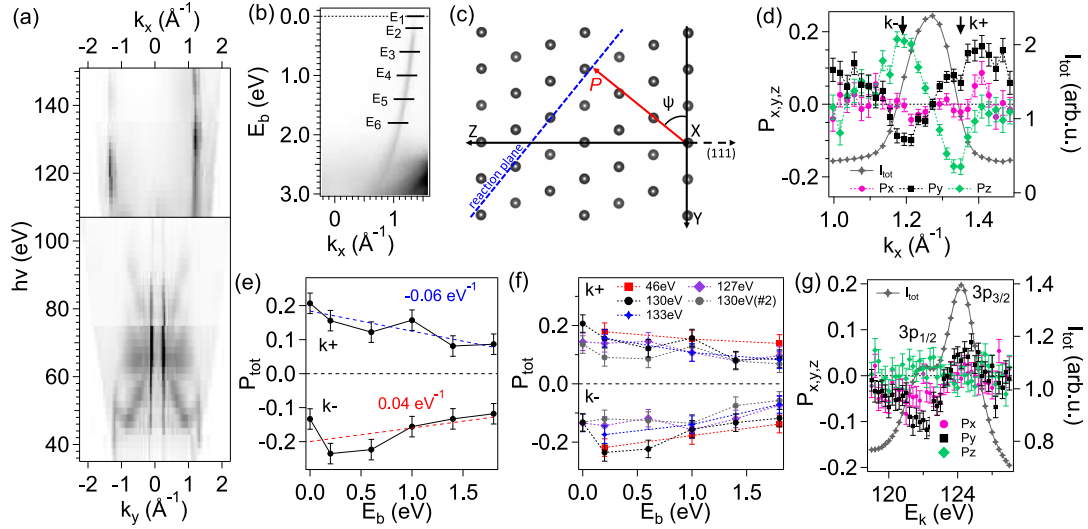


FIG. 2. (a) Cu(111) $h\nu$ dispersion for E_b close to the Fermi level. (b) Band map at $h\nu = 130$ eV with the sp bulk CB. Solid lines indicate the E_b where the spin-resolved MDCs have been measured. The actual set was performed in a random sequence in order to prevent any time-related artifact. (c) orientation in space of the measured \mathbf{P} at k^- (the one at k^+ is opposite). The reaction plane is tilted by $\psi = 51^\circ$ [24] from the atomic reaction plane xz . (d) 3D spin resolved MDC along x measured 0.2 eV below the Fermi level with $h\nu = 130$ eV π polarized. The total intensity and the three polarization spatial components are shown. (e) Plot of $P(E_b)$ for the two spin signals k^- and k^+ ; (f) measurement repeated for different $h\nu$; (g) 3D spin-resolved EDC of the $3p$ core levels with same E_k and θ as the measurement in (d).

nearly-free electronlike dispersion without any hybridization with other bands in a 2 eV range from the Fermi level.

In our setup the E field lies in the xz plane with $E_x/E_z \approx 0.67$ [24] and thus probes both in-plane and out-of-plane orbital components. These in turn are not isotropic as in the simpler case of atomic targets. Because of these symmetries combined with the (111) crystal orientation probed with a low-symmetry non-normal incidence setup the \hat{n} direction is not the purely atomic one that would correspond to y , but we have to consider the full 3D vector \mathbf{P} . The measured orientation in space of \mathbf{P} is shown in Fig. 2(c) and can be used to develop a model for the estimate of the term $f(\Omega)$ [24].

In Fig. 2(d) the three spatial components x, y, z of \mathbf{P} for the MDC measured 0.2 eV below the Fermi level are shown. This clear spin polarization signal has to be generated during the photoemission process since the bulk bands of Cu(111) are spin degenerate in the initial state. We can exclude surface-induced Rashba-like effects [35,36] as the cause for the observed spin polarization because heavier Au(111) shows a polarization with similar magnitude [24].

The two nonzero components y, z of \mathbf{P} change sign when crossing the intensity peak maximum, thus resulting in a signal with two peaks (called k^- and k^+ in Fig. 2). By repeating the measurements at different E_b a plot of $P(E_b)$ was constructed, as shown in Fig. 2(e) for both peaks. The slope of their linear fit is the relevant quantity for the determination of τ_{EWS} according to Eq. (5), and by applying the model described in Ref. [24] we can estimate $|\tau_{\text{EWS}}| > 26$ as. The $P(E_b)$ measurement has been repeated for various photon energies as shown in Fig. 2(f). Despite

the large error bars and the small number of data points, a similar overall slope is observed for all the $h\nu$. This suggests that possible additional effects related to the travel time of the electron during the transport to the surface [4,37] are not present within our experimental capabilities.

In order to study the influence of possible additional effects on P we made a survey of spin-resolved energy distribution curves (EDCs) over the $3p$ core levels for angles and kinetic energies corresponding to our CB measurements, as shown in Fig. 2(g). Given their localized nature, the core electrons are expected to behave as in atomic photoionization [38]. The result of our analysis shows that \mathbf{P} has only a single peak feature per $3p$ spin-orbit component and does not change for different angles nor kinetic energies, so that diffraction effects through the surface do not play a role [24].

The two-peaks spin signal of the CB is clearly visible in Fig. 3(a) where a summary of P from all the MDCs performed with $h\nu = 130$ eV is shown. Crucially, one single band is measured without spin resolution as well established in literature [39] and shown in Fig. 2(b). In order to understand this critical feature, fully relativistic self consistent multiple-scattering or Korringa-Kohn-Rostoker (KKR) calculations have been performed [40]. In Fig. 3(b) the evaluated P from ARPES calculations for a semi-infinite system in the framework of the fully relativistic one-step model of photoemission [41,42] within its spin-density matrix formulation [43] is shown, and its three spatial components are reported in Fig. 3(c). Also in this case the sp band gives rise to two spin signals matching closely to the experimental results, thus excluding any

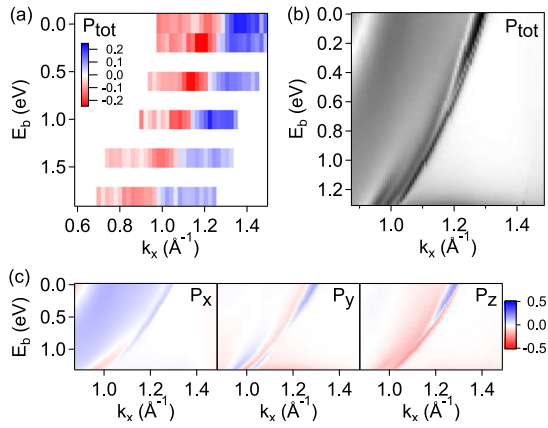


FIG. 3. (a) Summary band map of spin polarization P from MDCs measured along k_x with $h\nu = 130$ eV π polarized; (b) P from KKR calculations performed for similar experimental parameters; (c) the three calculated spatial components of P . Their complexity does not permit us to unambiguously fix a direction along which (b) could be projected in order to plot it in a red-blue color scale.

possible artifact in the measurement. This double feature has already been observed, but not discussed, in previous calculations related to self-energy correction studies [44], and will require further investigation.

It is important to discuss the nature of the measured time delay since the chronoscopy of photoemission is a fundamental topic in modern physics [45]. In attosecond-resolved experiments the time delay of a photoelectron beam from a certain state is measured with respect to a different photoelectron beam, which can be from a reference gas system [6], or a different level of the same system [3,4], or the very same state but under different experimental geometry [7]. Noticeably, the measurement of a finite *relative* time delay $\Delta\tau$ suggests the existence of a finite *absolute* time delay τ of photoemission for each beam, even though this issue has been experimentally addressed only very recently and still relies on comparison with theoretical calculations [5,46].

In this regard, the nature of the time delay indirectly probed by SARPES is not obvious at this stage. It has to be noticed that a time delay of 26 as is of the same order of *one cycle* of electromagnetic radiation of 130 eV, and of the travel time of a 125 eV electron along a distance of 1 Cu atom radius in the metallic state. The spin polarization is produced by the phase shift between the two interfering transitions $T_{1,2}$, which in the case of atomic photoionization correspond to the two final partial waves with orbital quantum number $\ell \pm 1$. In solids one should also distinguish between probed in-plane and out-of-plane orbitals [47], as well as mixed spatial symmetries of the considered state in the double group symmetry representation [8,20], both in the initial and final states. In any case, the interfering transitions are different photoemission channels which do not correspond to different photoelectrons, but

they together build up the photoelectron wave function. This seems in contrast with the relative time delay probed by time-resolved spectroscopy, and to this extent the two techniques can be considered as complementary. It is also important to underline that the model presented here permits us to extract the time information from non-time-resolved calculations, which would be very powerful when performed on systems that are experimentally difficult to probe with time-resolved or spin-resolved ARPES.

In the framework of the one-step model of photoemission it is difficult to tell which process among photon absorption, electron virtual transition and actual photoelectron emission might occur in a finite time. Indeed the influence of the E field on the phase shift is under debate [48–50] and there might exist a time-threshold for light absorption. A finite decoherence time required by the wave function to collapse in the final state might also be considered [51], and lastly the electron excited above the vacuum level could spend a finite time before reaching the free-particle state. A physical description of the origin of such intrinsic time delay could be a continuous interband coupling mechanism, equivalent for solids of the interchannel coupling in photoionization which leads to finite attosecond time delays [52]. Also the time scale of intrinsic plasmonic satellites might play a role [37], which could possibly explain the double peak feature of the measured spin polarization in Fig. 3 [53]. In addition, given the energy-momentum relationship one might be sensitive to spectral variations of the time delay within the band considered [50].

Finally, a note is required about the most common use of SARPES: the study of spin-polarized states. If a spin quantization axis is well defined by the physics of the initial state, interference effects will be concealed, since they contribute only to a small degree of polarization. In fact, whereas a precise quantitative analysis is often impracticable, qualitative results have confirmed many different theoretical predictions. However, a small rotation of the measured spin polarization compared to theoretical results is quite common, and indeed it is possible to have a rotation of the spin polarization vector in spin polarized electron scattering [14]. The development of a more advanced theory of spin-polarized photoemission should take this and other known interference effects [2,54] into account, together with time delays.

In conclusion, we have derived a semiquantitative model to access a time delay in photoemission from a dispersive band of a solid by measuring the spin polarization of the photoelectrons. A finite time delay of $|\tau_{\text{EWS}}| > 26$ as has been found by first experiments on Cu(111) as a model system.

We gratefully acknowledge discussions with F. Da Pieve. This work was supported by the Swiss National Science Foundation Project No. PP00P2_144742/1. This work was supported by the Bundesministerium für Bildung und Forschung (BMBF) under Grant No. 05K16WMA, the Deutsche Forschungsgemeinschaft (DFG) through SPP

1666 and the CEDAMNF project (CZ.02.1.01/0.0/0.0/15_003/0000358), co-funded by the ERDF as part of the Ministry of Education of Czech Republic, Youth and Sports OP RDI programme.

*Corresponding author.

mauro.fanciulli@epfl.ch

- [1] A. Damascelli, *Phys. Scr.* **2004**, 61 (2004).
- [2] U. Heinzmann and J. H. Dil, *J. Phys. Condens. Matter* **24**, 173001 (2012).
- [3] A. L. Cavalieri, N. Muller, T. Uphues, V. S. Yakovlev, A. Baltuska, B. Horvath, B. Schmidt, L. Blumel, R. Holzwarth, S. Hendel, M. Drescher, U. Kleineberg, P. M. Echenique, R. Kienberger, F. Krausz, and U. Heinzmann, *Nature (London)* **449**, 1029 (2007).
- [4] S. Neppel, R. Ernstorfer, E. M. Bothschafter, A. L. Cavalieri, D. Menzel, J. V. Barth, F. Krausz, R. Kienberger, and P. Feulner, *Phys. Rev. Lett.* **109**, 087401 (2012).
- [5] S. Neppel, R. Ernstorfer, A. L. Cavalieri, C. Lemell, G. Wachter, E. Magerl, E. M. Bothschafter, M. Jobst, M. Hofstetter, U. Kleineberg, J. V. Barth, D. Menzel, J. Burgdorfer, P. Feulner, F. Krausz, and R. Kienberger, *Nature (London)* **517**, 342 (2015).
- [6] R. Locher, L. Castiglioni, M. Lucchini, M. Greif, L. Gallmann, J. Osterwalder, M. Hengsberger, and U. Keller, *Optica* **2**, 405 (2015).
- [7] M. Lucchini, L. Castiglioni, L. Kasmi, P. Kliuiev, A. Ludwig, M. Greif, J. Osterwalder, M. Hengsberger, L. Gallmann, and U. Keller, *Phys. Rev. Lett.* **115**, 137401 (2015).
- [8] S.-W. Yu, R. David, N. Irmer, B. Schmiedeskamp, N. Müller, U. Heinzmann, and N. A. Cherepkov, *Surf. Sci.* **416**, 396 (1998).
- [9] E. P. Wigner, *Phys. Rev.* **98**, 145 (1955).
- [10] F. T. Smith, *Phys. Rev.* **118**, 349 (1960).
- [11] J. D. Dollard, *J. Math. Phys.* **5**, 729 (1964).
- [12] R. Pazourek, S. Nagele, and J. Burgdorfer, *Faraday Discuss.* **163**, 353 (2013).
- [13] J. H. Dil, *J. Phys. Condens. Matter* **21**, 403001 (2009).
- [14] J. Kessler, *Polarized Electrons*, 2nd ed. (Springer, Berlin, Heidelberg, 1985).
- [15] U. Heinzmann, *J. Phys. B* **13**, 4353 (1980).
- [16] U. Heinzmann, *J. Phys. B* **13**, 4367 (1980).
- [17] K.-N. Huang, *Phys. Rev. A* **22**, 223 (1980).
- [18] N. Cherepkov, *Advances in Atomic and Molecular Physics*, *Advances in Atomic and Molecular Physics* (Elsevier, New York, 1983), Vol. 19, p. 395.
- [19] N. A. Cherepkov and V. V. Kuznetsov, *J. Phys. B* **20**, L159 (1987).
- [20] C. M. Schneider, J. Garbe, K. Bethke, and J. Kirschner, *Phys. Rev. B* **39**, 1031 (1989).
- [21] E. Tamura, W. Piepke, and R. Feder, *Phys. Rev. Lett.* **59**, 934 (1987).
- [22] B. Schmiedeskamp, B. Vogt, and U. Heinzmann, *Phys. Rev. Lett.* **60**, 651 (1988).
- [23] J. Henk and R. Feder, *Europhys. Lett.* **28**, 609 (1994).
- [24] See Supplemental Material at <http://link.aps.org/supplemental/10.1103/PhysRevLett.118.067402>, which includes Refs. [25–30], for details on the model, additional measurements, and comments.
- [25] E. Tamura and R. Feder, *Solid State Commun.* **79**, 989 (1991).
- [26] E. Tamura and R. Feder, *Europhys. Lett.* **16**, 695 (1991).
- [27] K. Ishizaka *et al.*, *Nat. Mater.* **10**, 521 (2011).
- [28] G. Landolt, S. V. Eremeev, Y. M. Koroteev, B. Slomski, S. Muff, T. Neupert, M. Kobayashi, V. N. Strocov, T. Schmitt, Z. S. Aliev, M. B. Babanly, I. R. Amiraslanov, E. V. Chulkov, J. Osterwalder, and J. H. Dil, *Phys. Rev. Lett.* **109**, 116403 (2012).
- [29] P. Busch, *Found. Phys.* **20**, 1 (1990).
- [30] D. Griffiths, *Introduction to Quantum Mechanics* (Prentice Hall, Englewood Cliffs, 1995).
- [31] M. Hoesch, T. Greber, V. N. Petrov, M. Muntwiler, M. Hengsberger, W. Auwaerter, and J. Osterwalder, *J. Electron Spectrosc. Relat. Phenom.* **124**, 263 (2002).
- [32] F. Meier, J. H. Dil, and J. Osterwalder, *New J. Phys.* **11**, 125008 (2009).
- [33] F. Reinert, G. Nicolay, S. Schmidt, D. Ehm, and S. Hüfner, *Phys. Rev. B* **63**, 115415 (2001).
- [34] J. H. Dil, F. Meier, and J. Osterwalder, *J. Electron Spectrosc. Relat. Phenom.* **201**, 42 (2015).
- [35] A. Kimura, E. E. Krasovskii, R. Nishimura, K. Miyamoto, T. Kadono, K. Kanomaru, E. V. Chulkov, G. Bihlmayer, K. Shimada, H. Namatame, and M. Taniguchi, *Phys. Rev. Lett.* **105**, 076804 (2010).
- [36] S. N. P. Wissing, C. Eibl, A. Zumbülte, A. B. Schmidt, J. Braun, J. Minár, H. Ebert, and M. Donath, *New J. Phys.* **15**, 105001 (2013).
- [37] C. Lemell, S. Neppel, G. Wachter, K. Tókési, R. Ernstorfer, P. Feulner, R. Kienberger, and J. Burgdorfer, *Phys. Rev. B* **91**, 241101 (2015).
- [38] C. Roth, F. U. Hillebrecht, W. G. Park, H. B. Rose, and E. Kisker, *Phys. Rev. Lett.* **73**, 1963 (1994).
- [39] R. Courths and S. Hüfner, *Phys. Rep.* **112**, 53 (1984).
- [40] H. Ebert, D. Ködderitzsch, and J. Minár, *Rep. Prog. Phys.* **74**, 096501 (2011).
- [41] J. Braun, *Rep. Prog. Phys.* **59**, 1267 (1996).
- [42] J. Minár, J. Braun, S. Mankovsky, and H. Ebert, *J. Electron Spectrosc. Relat. Phenom.* **184**, 91 (2011).
- [43] J. Braun, K. Miyamoto, A. Kimura, T. Okuda, M. Donath, H. Ebert, and J. Minár, *New J. Phys.* **16**, 015005 (2014).
- [44] A. Winkelmann, C. Tusche, A. A. Ünal, M. Ellguth, J. Henk, and J. Kirschner, *New J. Phys.* **14**, 043009 (2012).
- [45] R. Pazourek, S. Nagele, and J. Burgdorfer, *Rev. Mod. Phys.* **87**, 765 (2015).
- [46] M. Ossianer, F. Siegrist, V. Shirvanyan, R. Pazourek, A. Sommer, T. Latka, A. Guggenmos, S. Nagele, J. Feist, J. Burgdorfer, R. Kienberger, and M. Schultze, *Nat. Phys.*, doi:10.1038/nphys3941 (2016).
- [47] N. Irmer, R. David, B. Schmiedeskamp, and U. Heinzmann, *Phys. Rev. B* **45**, 3849 (1992).
- [48] S. Nagele, R. Pazourek, J. Feist, and J. Burgdorfer, *Phys. Rev. A* **85**, 033401 (2012).
- [49] C.-H. Zhang and U. Thumm, *Phys. Rev. A* **82**, 043405 (2010).
- [50] C.-H. Zhang and U. Thumm, *Phys. Rev. A* **84**, 033401 (2011).
- [51] M. Schloßhauer, *Rev. Mod. Phys.* **76**, 1267 (2005).
- [52] S. Pabst, L. Greenman, P. J. Ho, D. A. Mazziotti, and R. Santra, *Phys. Rev. Lett.* **106**, 053003 (2011).
- [53] A. Bostwick, F. Speck, T. Seyller, K. Horn, M. Polini, R. Asgari, A. H. MacDonald, and E. Rotenberg, *Science* **328**, 999 (2010).
- [54] F. Meier, V. Petrov, H. Mirhosseini, L. Patthey, J. Henk, J. Osterwalder, and J. H. Dil, *J. Phys. Condens. Matter* **23**, 072207 (2011).