

Brown's Weighted Exponential Moving Average Implementation in Forex Forecasting

Seng Hansun^{*1}, Subanar²

¹Universitas Multimedia Nusantara, Program Studi Teknik Informatika, Fakultas Teknik dan Informatika, Jl. Boulevard Gading Serpong, Scientia Garden, Tangerang, Indonesia

²Universitas Gadjah Mada, Jurusan Matematika FMIPA UGM, Sekip Utara, Yogyakarta, Indonesia

*Corresponding author, e-mail: hansun@umn.ac.id¹, subanar@yahoo.com²

Abstract

In 2016, a time series forecasting technique which combined the weighting factor calculation formula found in weighted moving average with Brown's double exponential smoothing procedures had been introduced. The technique is known as Brown's weighted exponential moving average (B-WEMA), as a new variant of double exponential smoothing method which does the exponential filter processes twice. In this research, we will try to implement the new method to forecast some foreign exchange, or known as forex data, including EUR/USD, AUD/USD, GBP/USD, USD/JPY, and EUR/JPY data. The time series data forecasting results using B-WEMA then be compared with other conventional and hybrid moving average methods, such as weighted moving average (WMA), exponential moving average (EMA), and Brown's double exponential smoothing (B-DES). The comparison results show that B-WEMA has a better accuracy level than other forecasting methods used in this research.

Keywords: Brown's double exponential smoothing, B-WEMA, exponential moving average, foreign exchange, time series forecasting, weighted moving average

Copyright © 2017 Universitas Ahmad Dahlan. All rights reserved.

1. Introduction

Time series is a time-oriented or chronological sequence of observations on a variable of interest [1]. There are two types of time series data, i.e. continuous time series where observations recorded continuously over some time intervals, and discrete time series where observations are made at fixed time intervals [2]. According to Dufour [2], the discrete time series data is more commonly used than the continuous time series data, especially in economic related field.

In order to understand the characteristics of time series data, there are so many time series analysis methods that have been developed [3, 4]. One of their goal is to forecast or predict the future values from a given time series data [5]. To achieve that goal, many researchers had conducted and developed, not only conventional methods as we can find in the works of Wang [6], Klinker [7], and Papailias and Thomakos [8], but also the soft computing methods such as fuzzy, neural networks, or their hybrid methods [9-15].

In mid-2016, a new technique to forecast future data in time series analysis had been introduced. The technique is called as Brown's Weighted Exponential Moving Average (B-WEMA) since it is a hybrid method which combined the weighting factor calculation formula found in weighted moving average with Brown's double exponential smoothing method. Based on the research's results as presented in [16], B-WEMA has a better accuracy value compare to other conventional moving average methods.

In this study, we will try to implement B-WEMA in a real financial time series data, i.e. the foreign exchange (forex/ FX). Forex is the exchange of one currency into another currency [17] and the market is said to be the largest and most liquid market in the whole world [18]. So the prediction of forex time series data by using its historical transaction is very important, that the decision of selling or buying the forex can be taken more precisely.

This study is the extended version of the research that had been published in late 2016 [19]. If on that research, the author only used one forex time series data (i.e. the EUR/USD closing data) and compared the B-WEMA forecasting results' with weighted moving average (WMA) and Brown's double exponential smoothing (B-DES), in this research we will try

to implement B-WEMA in five major currency pairs in forex transactions (i.e. EUR/USD, AUD/USD, GBP/USD, USD/JPY, and EUR/JPY closing data). Furthermore, exponential moving average (EMA) will also be used as a comparison method in spite of WMA and B-DES methods. To calculate the accuracy level of all forecasting methods, we will use mean square error (MSE) and mean absolute percentage error (MAPE). The next section will describe in detail the three moving average methods used in this research, i.e. WMA, EMA, and B-DES; and the hybrid moving average method, i.e. B-WEMA. Furthermore, MSE and MAPE forecast error measurements will be explained on the same section, while the forecasting results will be graphed and explained on Section 3. Section 4 will conclude the research's results and other findings which can be used as future research's topics.

2. Research Method

This chapter is begun with the discussion of weighted moving average, exponential moving average, and Brown's double exponential smoothing methods. The hybrid Brown's weighted exponential moving average method will be described later. The explanation of mean square error and mean absolute percentage error as the forecast error measurements will end this section.

2.1. Weighted Moving Average (WMA)

Weighted moving average is designed to put more weight on recent data and less weight on past data [20]. Usually, the weighting factor is calculated from the sum of days used in WMA calculation [21,22], with the formula can be described as follows [23]

$$WMA = \frac{nP_m + (n-1)P_{m-1} + \dots + 2P_{(m-n+2)} + P_{(m-n+1)}}{n + (n-1) + \dots + 2 + 1} \quad (1)$$

where n refers to the period or time interlude used in forecasting formula and P_m refers to the actual value of time series data at point m .

2.2. Exponential Moving Average (EMA)

The development of weighted moving average leads to exponential moving average. Just like WMA, exponential moving average also places more weight on recent data [24], but unlike WMA, the weight for each older data decreases exponentially, so it's never reaching zero value [25]. EMA is also known as single exponential smoothing technique and can be used to predict any time series data.

As described by NIST [26], EMA can be calculated recursively as:

$$S_1 = Y_1, \quad \text{for } t > 1, S_{t+1} = \alpha \cdot Y_t + (1 - \alpha) \cdot S_t, \quad (2)$$

where Y_t is the actual value at time period t , S_t is the smoothed value of EMA at time period t , and α represents a constant smoothing factor between 0 and 1. As can be found in [24] and [27], α can be calculated using the formula

$$\alpha = \frac{2}{(m+1)} \quad (3)$$

where m is the number of days used as time period in the forecasting formula.

2.3. Brown's Double Exponential Smoothing (B-DES)

Brown's double exponential smoothing is a type of double exponential smoothing technique, which is an improvement of single exponential smoothing or exponential moving average. It uses two different smoothed series, both of them are centered at different points on time [28]. It is said that the double exponential smoothing techniques can predict future values of time series data where a trend pattern spotted better than the single exponential smoothing technique. Nau [28] explained the procedures of B-DES as follows.

First, we need to find the single-smoothed series, S' , by applying EMA to time series Y , as:

$$S'_t = \alpha Y_t + (1 - \alpha)S'_{t-1} \quad (4)$$

Then, by using the single-smoothed series, we could find the double-smoothed series, denoted as S'' , by applying EMA to S' ,

$$S''_t = \alpha S'_t + (1 - \alpha)S''_{t-1} \quad (5)$$

Next, we could get the forecast value Y_{t+k} , for any $k \geq 1$, by

$$F_{t+k} = L_t + kT_t, \quad (6)$$

where L_t refers to the predicted level at time t , T_t refers to the predicted trend at time t , which both of them can be found as follow:

$$L_t = 2S'_t - S''_{t-1} \quad (7)$$

$$T_t = \frac{\alpha}{1-\alpha}(S'_t - S''_{t-1}) \quad (8)$$

2.4. Brown's Weighted Exponential Moving Average (B-WEMA)

Brown's weighted exponential moving average was first introduced in 2016 [16]. It is an improved version of weighted exponential moving average (WEMA) method which had been introduced in 2013 [25]. Using the basic principle found in WEMA, B-WEMA combines the weighting factor calculation formula found in weighted moving average with Brown's double exponential smoothing method. Same with other double exponential smoothing techniques, B-WEMA could be used to predict future values of time series data with a trend pattern.

The procedures of B-WEMA method can be explained as three recursive steps [16]:

- (1) Using equation (1) for a given time series data and periods, we calculate the base value, B_t .
- (2) Using the base value obtained, we calculate the prediction value by implementing equation (4)-(8), but we start the model by letting

$$S'_{t-1} = S''_{t-1} = B_t \quad (9)$$

- (3) Return to the first step until all data point in the time series data given have ended.

2.5. Mean Square Error (MSE)

The most popular technique to measure forecast error is mean square error. It is the average of the square error sum between the real data and the forecasted data. We can use the formula below to find MSE [29],

$$MSE = \frac{\sum_{t=1}^n e_t^2}{n} \quad (10)$$

where n denotes the number of data point used in the forecasting and e_t denotes the forecasting error, which can be found from the differences of real data (Y_t) and forecasted data (\hat{Y}_t).

2.6. Mean Absolute Percentage Error (MAPE)

Mean absolute percentage error is another popular forecast error measurement technique. It gives us an indication about how much the average of absolute error of the forecasted data compare to the actual data. The formula can be expressed as [29],

$$MAPE = \frac{\sum_{t=1}^n \frac{|e_t|}{|Y_t|}}{n} \times 100 \quad (11)$$

where n denotes the number of data point used in the forecasting and e_t denotes the forecasting error from the differences of real and forecasted data, $Y_t - \hat{Y}_t$.

3. Results and Discussion

On this study, implementation of Brown’s weighted exponential moving average on a real case financial data, i.e. the foreign exchange (forex) was conducted. Therefore, five major currency pairs in forex transactions, i.e. EUR/USD, AUD/USD, GBP/USD, USD/JPY, and EUR/JPY closing data were recorded daily from November 16th, 2015 to November 15th, 2016 [30] and be used as the dataset. Then, B-WEMA together with WMA, EMA, and B-DES will be implemented on the same dataset. We used MSE and MAPE criteria to calculate the accuracy level of each method implemented on this study.

3.1. Forex Forecasting Implementation

Figure 1 shows us the graph of forecasting results on EUR/USD closing data using WMA, EMA, B-DES, and B-WEMA methods. Moreover, Figure 2 shows the forecasting results using the same methods for AUD/USD dataset, Figure 3 shows the forecasting results for GBP/USD dataset, Figure 4 shows the forecasting results for USD/JPY dataset, and Figure 5 shows the forecasting results for EUR/JPY dataset. The real (actual) forex closing data are indicated by the blue line on the graph, while the predicted data are indicated by the red line.

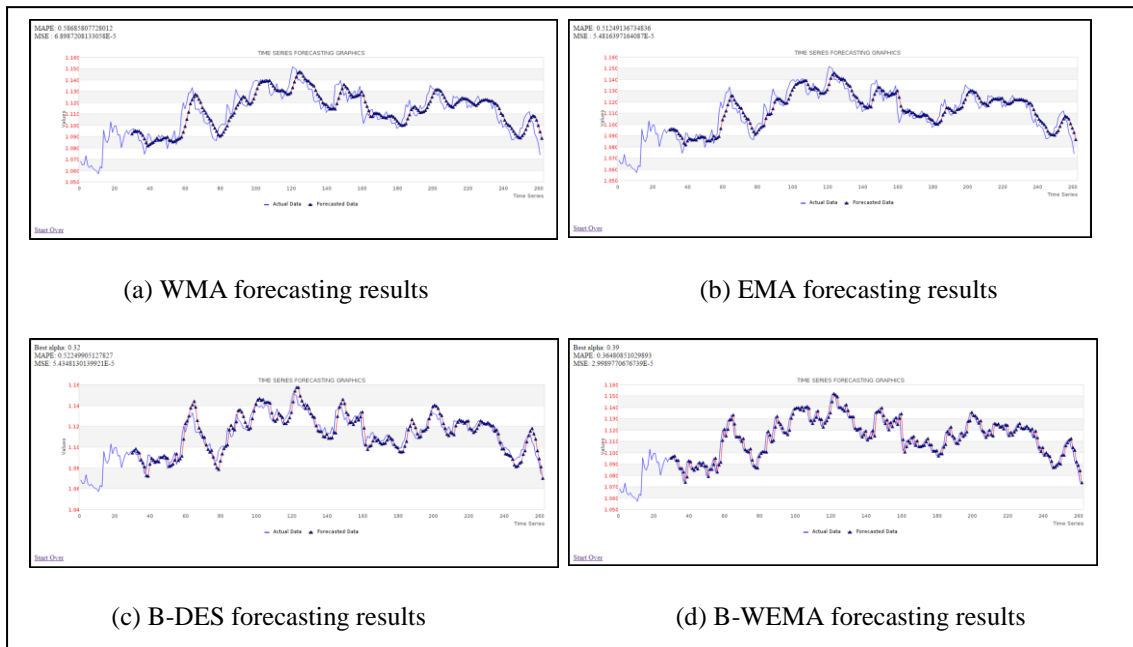


Figure 1. Forecasting results for EUR/USD

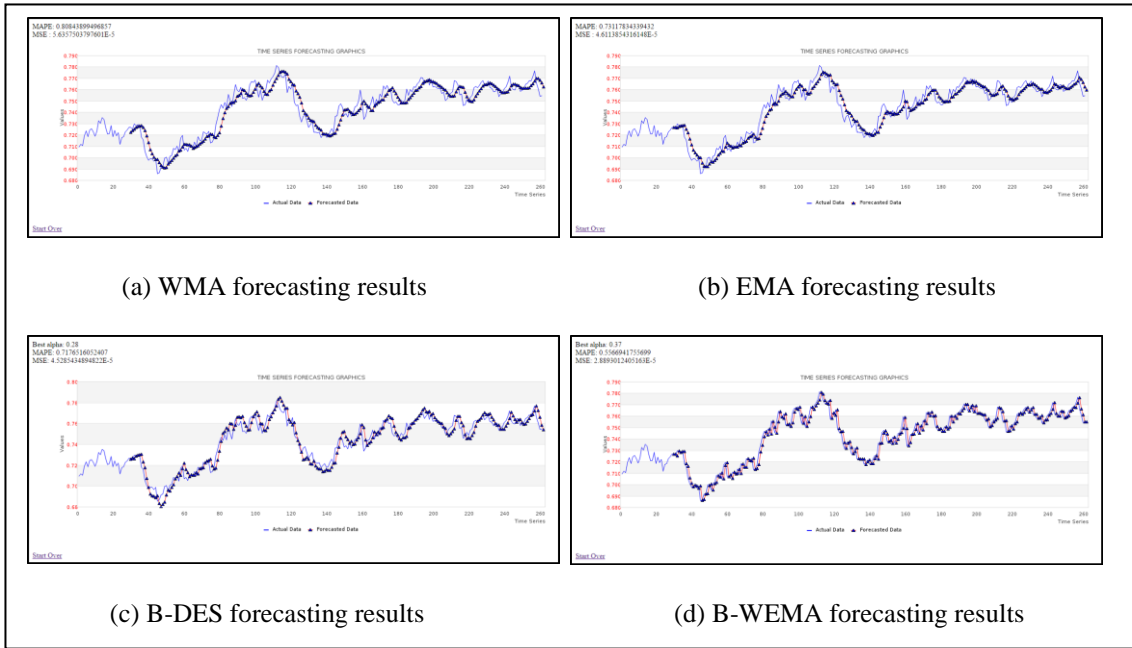


Figure 2. Forecasting results for AUD/USD

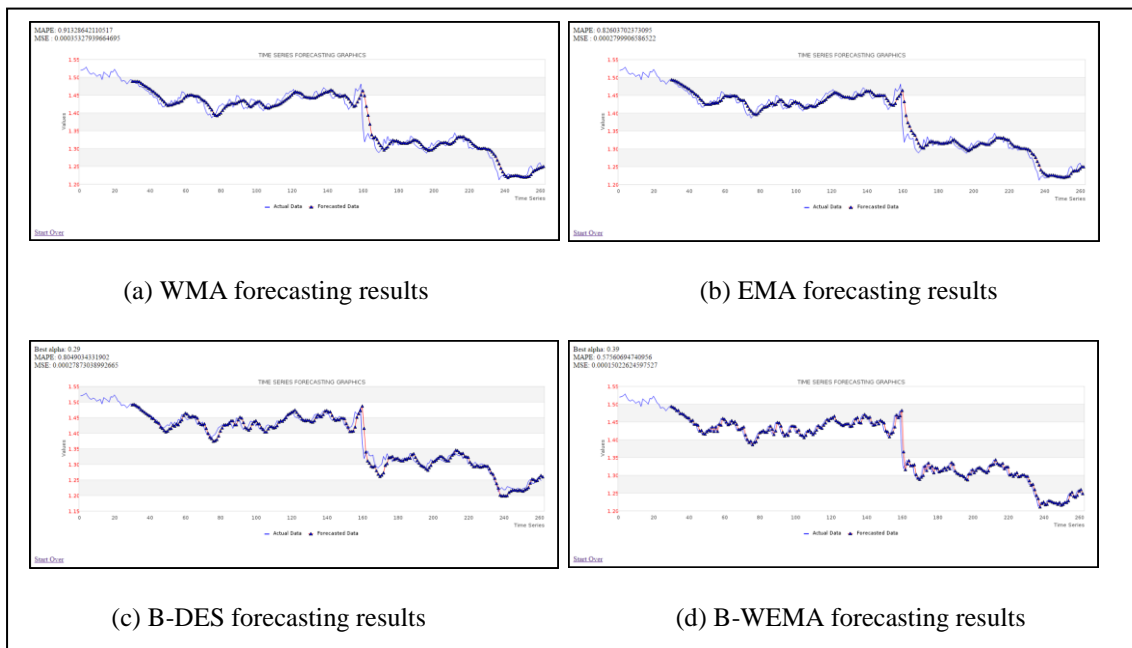


Figure 3. Forecasting results for GBP/USD

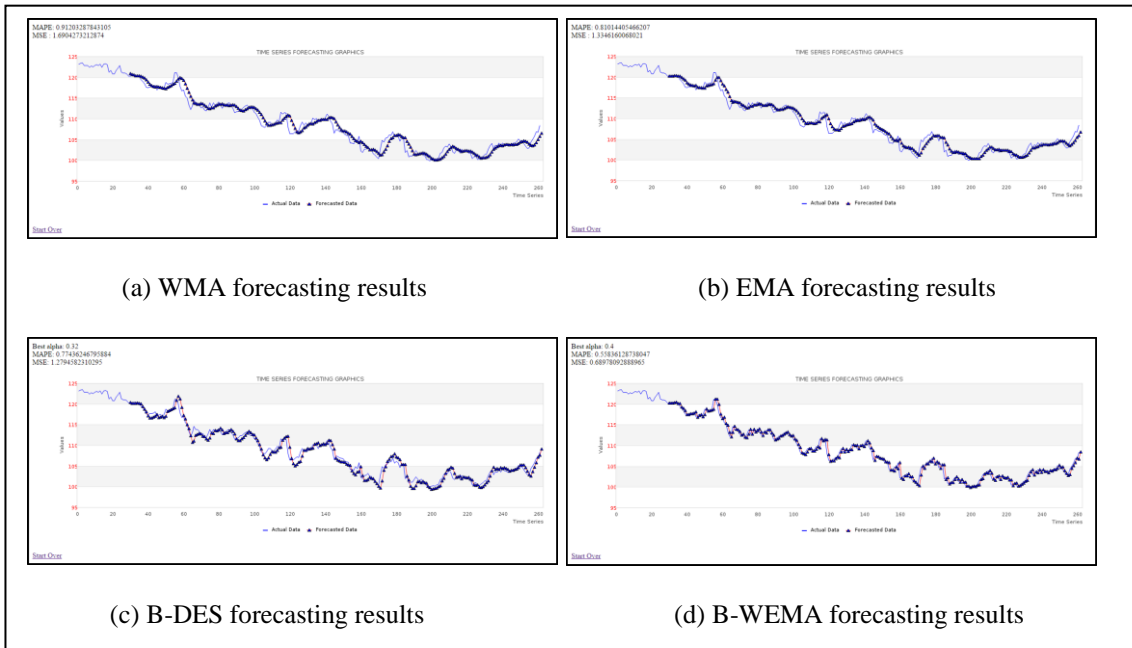


Figure 4. Forecasting results for USD/JPY

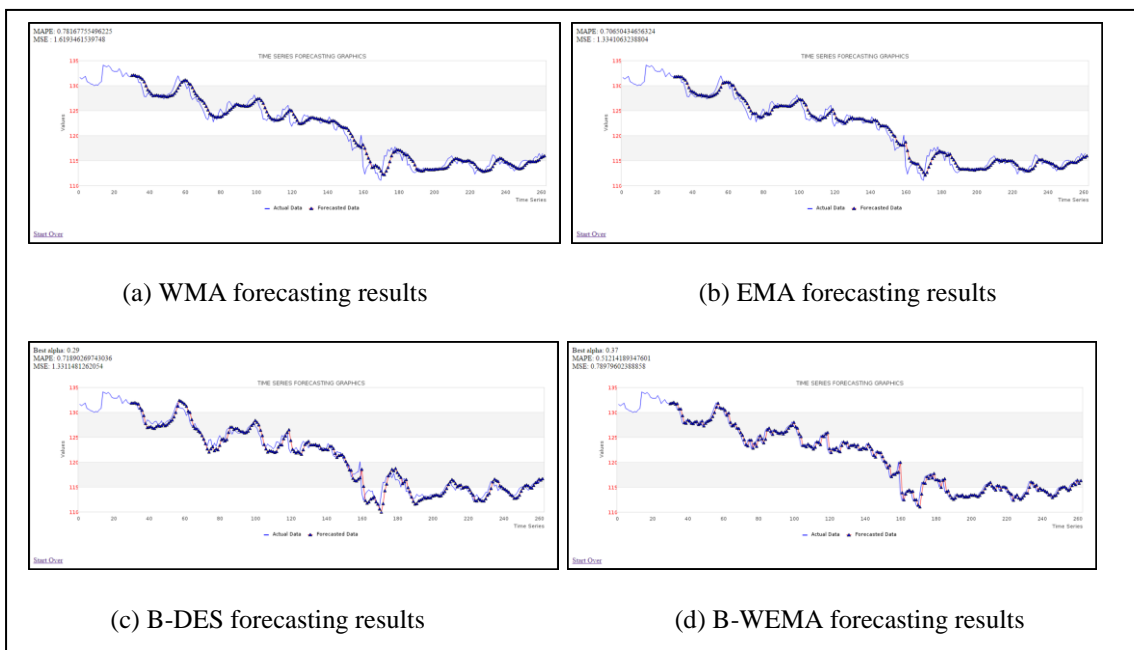


Figure 5. Forecasting results for EUR/JPY

4.2. MSE and MAPE Comparison

The experiments then continued to calculate the accuracy of each moving average method implemented on the system. Mean square error (MSE) and mean absolute percentage error (MAPE) criteria were used as forecast error measurement tools. The results of MSE and MAPE can be seen on Table 1.

Table 1. MSE and MAPE values of each method

FX Currency Pairs	MSE			
	WMA	EMA	B-DES	B-WEMA
EUR/USD	6.89872E-05	5.48164E-05	5.43481E-05	2.99898E-05
AUD/USD	5.63575E-05	4.61139E-05	4.52854E-05	0.000028893
GBP/USD	0.000353279	0.000279991	0.00027873	0.000150226
USD/JPY	1.690427321	1.334616007	1.279458231	0.689780929
EUR/JPY	1.619346154	1.334106324	1.331148126	0.789796024
Average	0.66205042	0.53382065	0.522196944	0.295957212

FX Currency Pairs	MAPE			
	WMA	EMA	B-DES	B-WEMA
EUR/USD	0.586858077	0.512491367	0.522499051	0.36480851
AUD/USD	0.808438995	0.731178343	0.717651605	0.556694176
GBP/USD	0.913286421	0.826037024	0.804903433	0.575606947
USD/JPY	0.912032878	0.810144055	0.774362468	0.558361287
EUR/JPY	0.781677555	0.706504347	0.718902697	0.512141894
Average	0.800458785	0.717271027	0.707663851	0.513522563

From Table 1, we can conclude that all the forecasting methods applied on this study can be used to forecast forex data with a relatively small error value. Moreover, from the MSE and MAPE value, we know that exponential moving average has a better accuracy level compare to weighted moving average method. Brown's double exponential smoothing has a better accuracy level compare with exponential moving average, but has worse accuracy than Brown's weighted exponential moving average method. Therefore, since B-WEMA excels all other moving average methods implemented in this study, we could conclude that B-WEMA can be used to forecast forex data transaction.

4. Conclusion

Brown's weighted exponential moving average (B-WEMA) had been successfully implemented to forecast foreign exchange (forex) data transaction. Using five major currency pairs in forex transactions, i.e. the EUR/USD, AUD/USD, GBP/USD, USD/JPY, and EUR/JPY closing data, we conclude that B-WEMA can be used and proved to be a better technique compare with WMA, EMA, and B-DES methods. Based on the experimental results, B-WEMA gives the smallest mean square error average value at 0.295957212 and the smallest mean absolute percentage error average value at 0.513522563.

For the future study, we can try to further develop B-WEMA method to predict future value of time series data where not only trend but also seasonal data spotted. Another study to combine other moving average methods, such as Holt-Winters triple exponential smoothing can also be done to complete the variant of WEMA methods.

References

- [1] Montgomery DC, Jennings CL, Kulahci M. Introduction to Time Series Analysis and Forecasting. New Jersey: John Wiley & Sons, Inc. 2008: 2.
- [2] Dufour, JM. Introduction to Time Series Analysis. Research Paper. Canada: McGill University. 2008: 1.
- [3] Falk, M. (Ed.). *A First Course on Time Series Analysis: Example with SAS*, Chair of Statistics, Germany: University of Wurzburg. 2012: 1.
- [4] Wei WWS. Time Series Analysis: Univariate and Multivariate Methods, 2nd ed. USA: Pearson Education, Inc. 2006: 1.
- [5] Arsham, H. Time-Critical Decision Making for Business Administration. Retrieved on June 29, 2016 from <http://home.ubalt.edu/ntsbarsh/stat-data/forecast.htm>.
- [6] Wang C. *Quantitative Analysis on the Bullwhip Effect in a Supply Chain using Double Moving Average and Double Exponential Smoothing Forecast*. in Proceedings of the International Symposiums on Information Processing (ISIP). Moscow, Russia. May 2008: 114-118.
- [7] Klinker F. Exponential Moving Average versus Moving Exponential Average. *Math. Semesterber.* 2011; 58(1): 97-107.
- [8] Papailias F, Thomakos DD. Improved Moving Average (IMA) Strategies. *Market Technician: Journal of the Society of Technical Analysis.* 2012; 72: 12-17.

- [9] Kuo S-C, Chen C-C, Chen H-Y, Li, S-T, Wang H-J. *A Steady-State Probabilities Model for Fuzzy Time Series Forecasting*. in Proceedings of the 5th IIAI International Congress on Advanced Applied Informatics (IIAI-AAI). Kumamoto, Japan. July 2016: 615-619.
- [10] Dong M. *Forecasting Language Test Performance with a Back Propagation Neural Network Model*. In Proceedings of the 11th International Conference on Natural Computation (ICNC). Zhangjiajie, China. August 2015: 813-819.
- [11] Zhiyuan Z, Yanning Z, Xiaoyuan Z, Yamin J. *Research on the Evaluation of Enterprise Competitiveness based on the Wavelet Neural Network Forecasting System*. Proceedings of the 2016 Chinese Control and Decision Conference (CCDC). Yinchuan, China. May 2016: 2674-2677.
- [12] Sachdev A, Sharma V. *Stock Forecasting Model Based on Combined Fuzzy Time Series and Genetic Algorithm*. Proceedings of the 2015 International Conference on Computational Intelligence and Communication Networks (CICN). Jabalpur, India. December 2015: 1303-1307.
- [13] Yu Y. *Evaluation of Wavelet Neural Network for Predicting Financial Market Crisis*. Proceedings of the 1st International Conference on Information Science and Engineering (ICISE). Nanjing. 2009: 4861-4864.
- [14] Suparman, Doisy M. Hierarchical Bayesian of ARMA Models using Simulated Annealing Algorithm. *TELKOMNIKA Telecommunication Computing Electronics and Control*. 2014; 12(1): 87-96.
- [15] Ferdinandoa H, Pasila F, Kuswanto H. Enhanced Neuro-Fuzzy Architecture for Electrical Load Forecasting. *TELKOMNIKA Telecommunication Computing Electronics and Control*. 2010; 8(2): 87-96.
- [16] Hansun S. A New Approach of Brown's Double Exponential Smoothing Method in Time Series Analysis. *Balkan Journal of Electrical & Computer Engineering (BAJECE)*. 2016; 4(2): 75-78.
- [17] Investopedia. Foreign Exchange. Retrieved on June 29, 2016 from <http://www.investopedia.com/terms/f/foreign-exchange.asp>.
- [18] Investopedia. Forex-FX. Retrieved on June 29, 2016 from <http://www.investopedia.com/terms/f/forex.asp>.
- [19] Hansun S. *FX Forecasting using B-WEMA: Variant of Brown's Double Exponential Smoothing*. Proceedings of the 1st International Conference on Informatics and Computing (ICIC). Lombok. October 2016.
- [20] Droke C. *Moving Averages Simplified*. United States of America: Marketplace Books. 2001.
- [21] Incrediblecharts. Weighted Moving Average. Retrieved on November 15, 2016 from https://www.incrediblecharts.com/indicators/weighted_moving_average.php.
- [22] Kinsky R. *Charting. Made Simple: A Beginner's Guide to Charting Success*. Melbourne: Wrightbooks. 2011.
- [23] Scottrade. Weighted Moving Averages. Retrieved on June 29, 2016 from <https://research.scottrade.com/knowledgecenter/Public/education/Article?docId=35df83fe39f94d1f98c1d896bff5ada6>.
- [24] Scottrade. Exponential Moving Averages. Retrieved on November 15, 2016 from <https://www.scottrade.com/knowledge-center/investment-education/research-analysis/technical-analysis/the-indicators/exponential-moving-averages.html>.
- [25] Hansun, S. *A New Approach of Moving Average Method in Time Series Analysis*. Proceedings of the 2013 IEEE International Conference on New Media (CoNMedia). Indonesia. 2013: 1-4.
- [26] NIST/SEMATECH e-Handbook of Statistical Methods. Forecasting with Single Exponential Smoothing. Retrieved on November 15, 2016 from <http://www.itl.nist.gov/div898/handbook/pmc/section4/pmc432.htm>.
- [27] Incrediblecharts. Exponential Moving Average. Retrieved on November 15, 2016 from https://www.incrediblecharts.com/indicators/exponential_moving_average.php.
- [28] Nau, R. *Moving Average and Exponential Smoothing Models*. Retrieved on November 15, 2016 from <http://people.duke.edu/~rnau/411avg.htm#HoltLES>.
- [29] Lawrence, K.D., Klimberg, R.K., and Lawrence, S.M. *Fundamentals of Forecasting using Excel*. New York: Industrial Press, Inc. 2009.
- [30] Forex Forum. GVI Forex Database: Free Forex Historical Data. Retrieved on November 15, 2016 from <http://www.global-view.com/forex-trading-tools/forex-history/index.html>.