

TELKOMNIKA, Vol.16, No.6, December 2018, pp.2522–2527

ISSN: 1693-6930, accredited First Grade by Kemenristekdikti, Decree No: 21/E/KPT/2018

DOI: 10.12928/TELKOMNIKA.v16i6.10091

■ 2522

Comparison of Raindrop Size Distribution Characteristics Across the Southeast Asia Region

Manhal Alhilali¹, Lam Hong Yin², Jafri Din^{*3}^{1,3}Wireless Communication Centre, Faculty of Electrical Engineering, Universiti Teknologi Malaysia, 81310 Johor Bahru, Johor, Malaysia²Department of Electrical Engineering Technology, Faculty of Engineering Technology, Universiti Tun Hussein Onn Malaysia, Parit Raja, Batu Pahat 86400 Johor, Malaysia^{*}Corresponding author, e-mail: jafri@utm.my

Abstract

Satellite communication requires reliable estimates of the channel characteristics, especially with the future use of higher frequencies. Regardless of the rain rate, the shape of rain drop size distribution (DSD) start to considerably effect the specific attenuation. In this study DSDs are studied using ground-based two-dimensional video disdrometer measurements taken from Johor, Malaysia as well as two similar datasets from Gan and Manus, two equatorial islands. Integral rain parameters are studied to explain DSD variations across the Southeast Asia region. Slightly higher raindrop concentrations and larger diameters were observed in Johor than in Gan or Manus, which is due to Johor being affected by not only oceanic rain-fall but land rainfall as well. The measured rainfall was classified into convective and stratiform precipitation types; the results showed that the Southeast Asia region is dominated by convective rain in terms of accumulated rainfall amount, but stratiform rain occurred more frequently. Further, seasonal variations observed in Johor were insignificant and the DSD variation was mostly due to changes in percentage occurrence of the precipitation types for each monsoon season.

Keywords: raindrop size distribution, seasonal variations, convective rain, stratiform rain

Copyright © 2018 Universitas Ahmad Dahlan. All rights reserved.

1. Introduction

In satellite communication and remote sensing, knowledge of channel characteristics is of utmost importance. Rain rate data are available on a global scale. For a known rain rate, however, the specific attenuation may considerably vary, depending on the shape of the rain drop size distribution (DSD) [1]. It is necessary to understand the variability of DSD to improve quantitative precipitation estimation (QPE) and microphysics parameterisation, ensuring accurate quantitative precipitation forecasts (QPF) [2, 3].

Despite their heavy rain characteristics, DSDs of equatorial rainfall are not commonly studied because they require measurements to be done in remote locations for extended periods of time [4, 5]. Thus, the main goal of this study is to analyze DSDs across the Southeast Asia region, and to elucidate the variations of those DSDs. To that aim, we used new 2D video disdrometer (2DVD) measurements from Johor, Malaysia (12-month) [6]. and compared these measurements with similar datasets from the equatorial Gan Island in the Indian Ocean (3.5-month record) and Manus Island in the West Pacific Ocean (18-month record) [7]. The locations where data were collected, as well as other locations of DSD research are shown in Figure 1.

Bringi [8] found that DSD characteristics demonstrate a clear separation between convective and stratiform events in terms of the $\log_{10} N_w$ versus D_0 variation, with three separate regions (convective, stratiform, and transitional rain). The fitting procedure has been described previously in [9], and goodness of fit was later tested by [10] and [11]. In the current study, separation was conducted using these methods to obtain an overview of occurrence and percentage statistics. Additionally, to address seasonal variation in Johor, the year was separated into two primary monsoon seasons, as described by [12]: Northeast (NE) and Southwest (SW), which correspond to June-September and December to March, respectively. Smaller inter-monsoon seasons were designated as Pre-southwest and Pre-northeast. A brief description of the DSD database and methods used is given in Section 2. DSD characteristics

comparisons and seasonal variations are presented in section 3. Finally, section 4 includes concluding remarks.

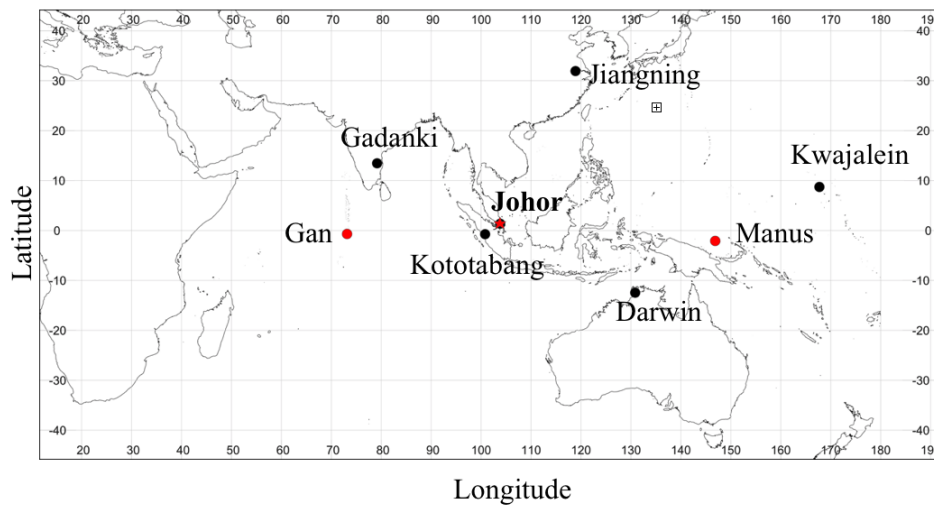


Figure 1. Location of Johor, Gan Island, Manus Island, with other location of DSD research in the South-east Asia region

2. The Raindrop Size Distribution Database

The 2DVD in Johor has been operational since 1 July 2015; the data examined here were collected for one year starting from that date [6]. The data from the Manus and Gan Islands were described in [7]. The Inter Tropical Convergence Zone (ITCZ) varies over the year following the sun's zenith point and at times passes over Malaysia, causing the trade winds to change from a northeast direction (NE) to southwest direction (SW). This results in two major seasons (monsoons) and two inter-monsoons over Malaysia. Figure 2 shows the monthly accumulated rain and ground temperature in Johor, Malaysia averaged over 3 years of measurements at the same location. March appears as the rainiest month in a year, while July exhibits the relatively highest temperature.

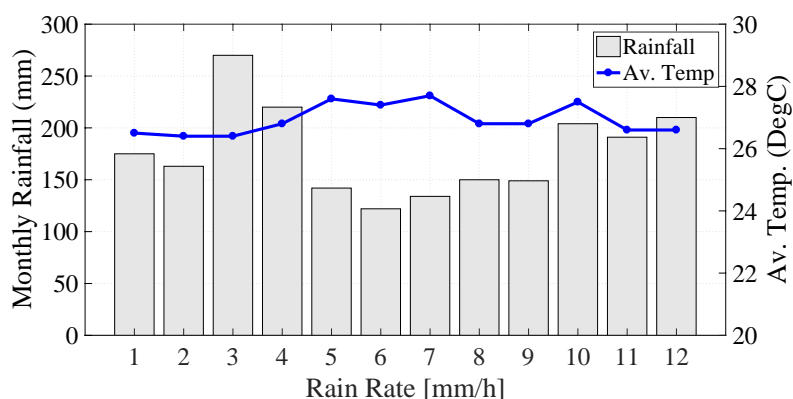


Figure 2. Monthly rainfall and temperature in Johor averaged over 3 years of measurements

To prepare the database for the present study, only 1-minute DSD data with a minimum of 100 drops or a rain rate of 0.05 mm/h during at least 3 consecutive rainy minutes were analysed. This was done to exclude minutes containing only a few small drops of rainwater, which could skew the analysis [9].

3. Results and Analysis

To represent DSD variability, the maximum raindrop diameter D_{MAX} , the median diameter D_0 , and the number concentration $\log_{10} N_W$ histograms normalised by the length of each dataset are shown in Figure 3.

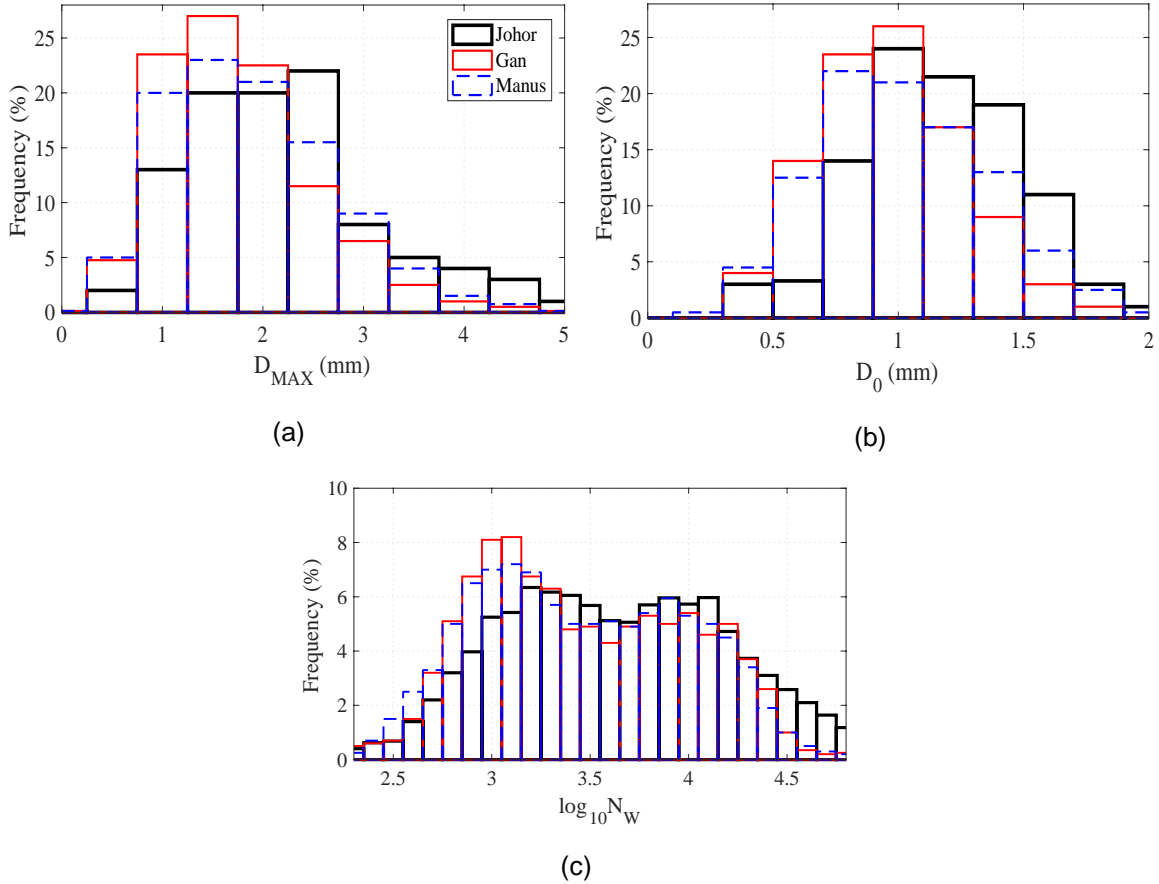


Figure 3. Normalised histograms of measured 2DVD DSD data in the three research locations (Johor, Gan, Manus): (a) maximum diameter D_{MAX} (mm), (b) median diameter D_0 (mm), and (c) number concentration $\log_{10} N_W$ (unitless)

Further, Table 1 includes integral parameters variances, means, standard deviations, minima, maxima, and 5th and 95th percentiles. While similar trends can be seen over the three locations, higher means were detected in Johor, indicating the continent effects.

Table 1. Mean, Variance (Var), Standard Deviation (Std), Min, Max, and 5th and 95th Percentiles of Integral Rain Parameters (D_{MAX} , D_0 , $\log_{10} N_W$, and Liquid Water Content (LWC)) at the Three Research Locations (Johor, Gan, Manus)

Parameter	Location	Mean	Var	Std	Min	5%	95%	Max
D_{MAX}	Johor	2.44	0.86	0.93	0.80	1.10	4.30	7.90
	Manus	2.16	0.73	0.85	0.80	1.00	3.66	8.54
	Gan	2.06	0.69	0.83	0.80	1.01	3.55	7.61
D_0	Johor	1.28	0.13	0.35	0.46	0.74	2.10	4.12
	Manus	1.11	0.11	0.33	0.34	0.61	1.65	3.83
	Gan	1.08	0.10	0.32	0.35	0.62	1.62	3.35
$\log_{10} N_W$	Johor	3.65	0.32	0.56	1.70	2.74	4.60	5.76
	Manus	3.70	0.28	0.53	1.57	2.89	4.55	5.22
	Gan	3.72	0.29	0.54	1.97	2.95	4.59	5.75
LWC	Johor	0.47	0.62	0.80	0.01	0.02	2.03	12.9
	Manus	0.35	0.58	0.76	0.00	0.01	1.72	12.6
	Gan	0.32	0.43	0.65	0.01	0.02	1.56	8.75

The bimodality in $\log_{10} NW$ distribution were similar to other maritime locations found by [13]. This is produced by the differences between convective and stratiform rain. Many other tropical DSD studies [9, 10] list similar mean D_0 and $\log_{10} N_W$. The convective and stratiform separation (C/S) was estimated for Johor using the method described in [11] the transitional period between the two types of rain which lies on the separation line is also highlighted, though not included with the stratiform and convective rain. Table 2 shows the variability of C/S rain fraction and frequency of occurrences.

Table 2. Variability of Rain Type Fraction by Number of Samples (Minutes), Rain Rate (mm/h), Total Accumulated Rain (mm) and the Percentages of Accumulation and Occurrence

Rain Type	Sample (min)	RR (mm/h)	R (mm)	% Accumulation	% Occurrence
Convective	1837	36.83	1110.6	71.84	13.7
Stratiform	9614	2.19	182.8	11.82	71.74
Transitional	1952	7.86	252.5	16.34	14.56
Total	13403	7.05	1.28	100	100

The C/S rain statistics for Johor were 71/12% in total rain accumulation and 14/72% of all rain occurrences. A similar trend was observed in Manus where C/S accumulated rain accounts for 81/19% and 41/59% of all occurrences [7]; however, the differences in occurrence might be due to the seasonal variations.

Figure 4 shows the percentages of occurrences of each type of rain in each monsoon and inter-monsoon season. While similar trends were observed in the NE and SW seasons, higher convective percentages occurred during the inter-monsoons, reflecting more localised climates.

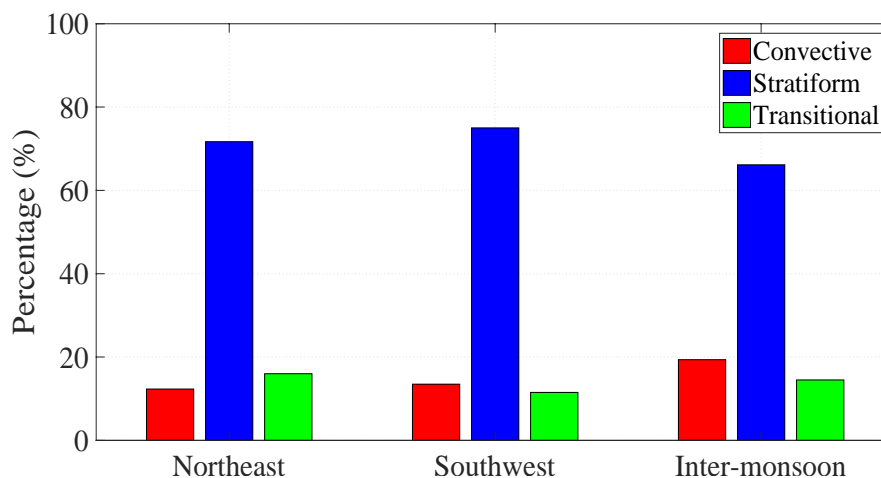


Figure 4. Percentages of occurrences of each type of rain in each monsoon and inter-monsoon season in Johor

To relate the DSD to radar remote sensing, one of the most important DSD characteristic properties to represent is the average DSD. Figure 5 presents the average DSD at Johor for the specified rain rates of 3 mm/h (4.77dBR) and, for the four monsoon seasons, 30 mm/h (14.77dBR). The selected rain rates are commonly used to represent light and heavy rain rates. Similar to [12] findings in Singapore, minimum seasonal variation was observed in Johor, which will, in turn, produce similar Z-R relationships among the different monsoon seasons.

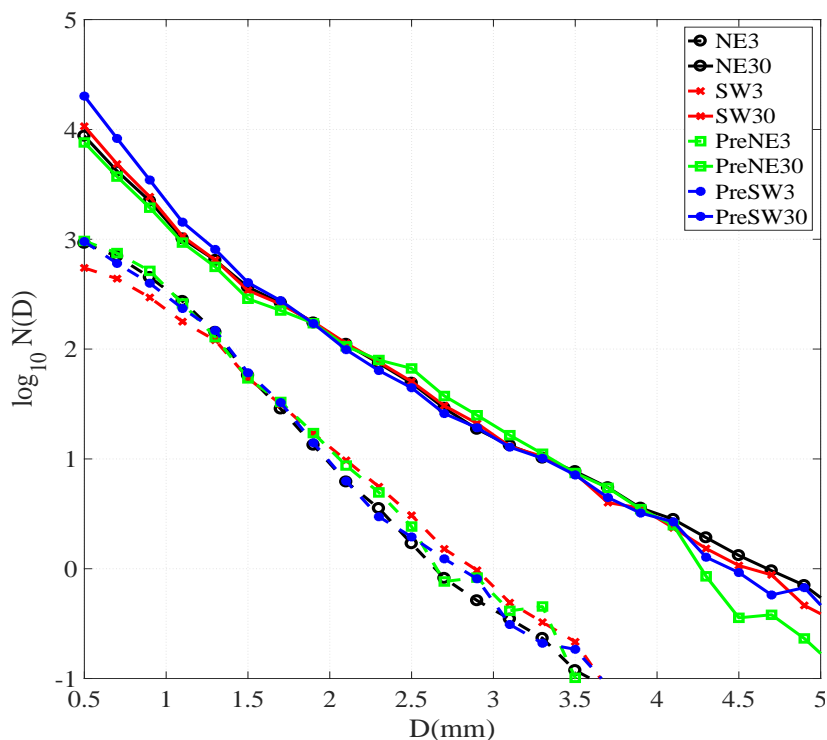


Figure 5. Average DSDs in Johor around 3 mm/h and 30 mm/h for the four monsoon seasons (Northeast, Southwest, Pre-southwest, and Pre-northeast)

4. Conclusion

In this study, the characteristics of DSD in Southeast Asia have been studied using a 1- year (2015-2016) dataset collected by 2DVD in Johor, Malaysia, which was then compared with two similar data sets from the Gan and Manus Islands. The normalised integral rain parameters for these locations were compared, revealing higher drop sizes and number concentration in Johor compared to Gan and Manus. The Johor dataset was further divided into convective and stratiform types based on the $\log_{10}nw$ (D0) method and into monsoon seasons (NE, SW, Pre-NE, Pre-SW), with statistics presented.

It is concluded that the slightly higher concentration with higher drop sizes in Johor compared with the other two locations is due to the fact that Johor is affected both by land and oceanic rainfall, while Gan and Manus are open ocean locations. The recorded rainfall was dominated by convective rain in terms of accumulated rain amount, while stratiform events occurred more frequently. Seasonal variations were limited where the rain type characteristics remained stable for the whole year, which will, in turn, produce similar Z-R relationships among the different monsoon seasons; however, the frequency of occurrence was different for each monsoon.

The results shown here could influence regional satellite studies on propagation impairment mitigation techniques. Longer measurements should be used as more data are collected. Future researchers can investigate more detailed rain type classifications as well as the relations between microphysical processes and DSD using radar data. The vertical structure of DSD can also be studied to evaluate DSD during raindrops fall.

Acknowledgment

This work has been funded by Ministry of Education Malaysia with Universiti Teknologi Malaysia under HICOE University Grant Vot. No. 4J221, and the Universiti Tun Hussein Onn Malaysia under contract research grant Vot U434", and was partially developed in the framework of the ESA/ESTEC/Contract 4000106180/12/NL/NR.

References

- [1] Schonhuber M, Mateos JP, Plimon K. *About seasonal variations of specific attenuations derived from DSD measurements*. In 11th European Conference on Antennas and Propagation (EUCAP), Paris. 2017: 1782-3.
- [2] Sun J. Initialization and numerical forecasting of a supercell storm observed during STEPS. *Mon. Wea. Rev.* 2005; 133(4): 793-813.
- [3] Zhang G, Sun J, Brandes EA. Improving parameterization of rain microphysics with disdrometer and radar observations. *J. Atmos. Sci.* 2006; 63(4): 1273-90.
- [4] Atlas D, Ulbrich CW, Meneghini R. The multiparameter remote measurement of rainfall. *Radio Sci.* 1984; 19(1): 3-22.
- [5] Lam HY, Din J, Jong SL. Statistical and physical descriptions of raindrop size distributions in equatorial Malaysia from disdrometer observations. *Adv Meteorol.* 2015; 2015: 1-14.
- [6] Alhilali M, Din J, Schonhuber M, Lam HY. Estimation of Millimeter Wave Attenuation Due to Rain Using 2D Video Distrometer Data in Malaysia. *Indonesian Journal of Electrical Engineering and Computer Science.* 2017; 7(1): 164-9.
- [7] Thompson EJ, Rutledge SA, Dolan B, Thurai M. Drop size distributions and radar observations of convective and stratiform rain over the equatorial Indian and West Pacific Oceans. *J. Atmos. Sci.* 2015; 72(11): 4091-125.
- [8] Bringi VN, Chandrasekar V, Hubbert J, Gorgucci E, Randeu WL, Schonhuber M. Raindrop size distribution in different climatic regimes from disdrometer and dual-polarized radar analysis. *J. Atmos. Sci.* 2003; 60(2): 354-65.
- [9] Bringi VN, Williams CR, Thurai M, May PT. Using dual-polarized radar and dual-frequency profiler for DSD characterization: A case study from Darwin, Australia. *J. Atmos. Oceanic Technol.* 2009; 26(10): 2107-22.
- [10] Thurai M, Williams CR, Bringi VN. Examining the correlations between drop size distribution parameters using data from two side-by-side 2D-video disdrometers. *Atmos. Res.* 2014; 144: 95-110.
- [11] Thurai M, Gatlin PN, Bringi VN. Separating stratiform and convective rain types based on the drop size distribution characteristics using 2D video disdrometer data. *Atmos. Res.* 2016; 169: 416-23.
- [12] Kozu T, Reddy KK, Mori S, Thurai M, Ong JT, Rao DN, Shimomai T. Seasonal and diurnal variations of raindrop size distribution in Asian monsoon region. *J. Meteor. Soc. Japan.* 2006; 84: 195-209.
- [13] Ulbrich CW, Atlas D. Microphysics of raindrop size spectra: Tropical continental and maritime storms. *J. Appl. Meteorol. Clim.* 2007; 46(11): 1777-91.